

CITY OF WICHITA, KANSAS

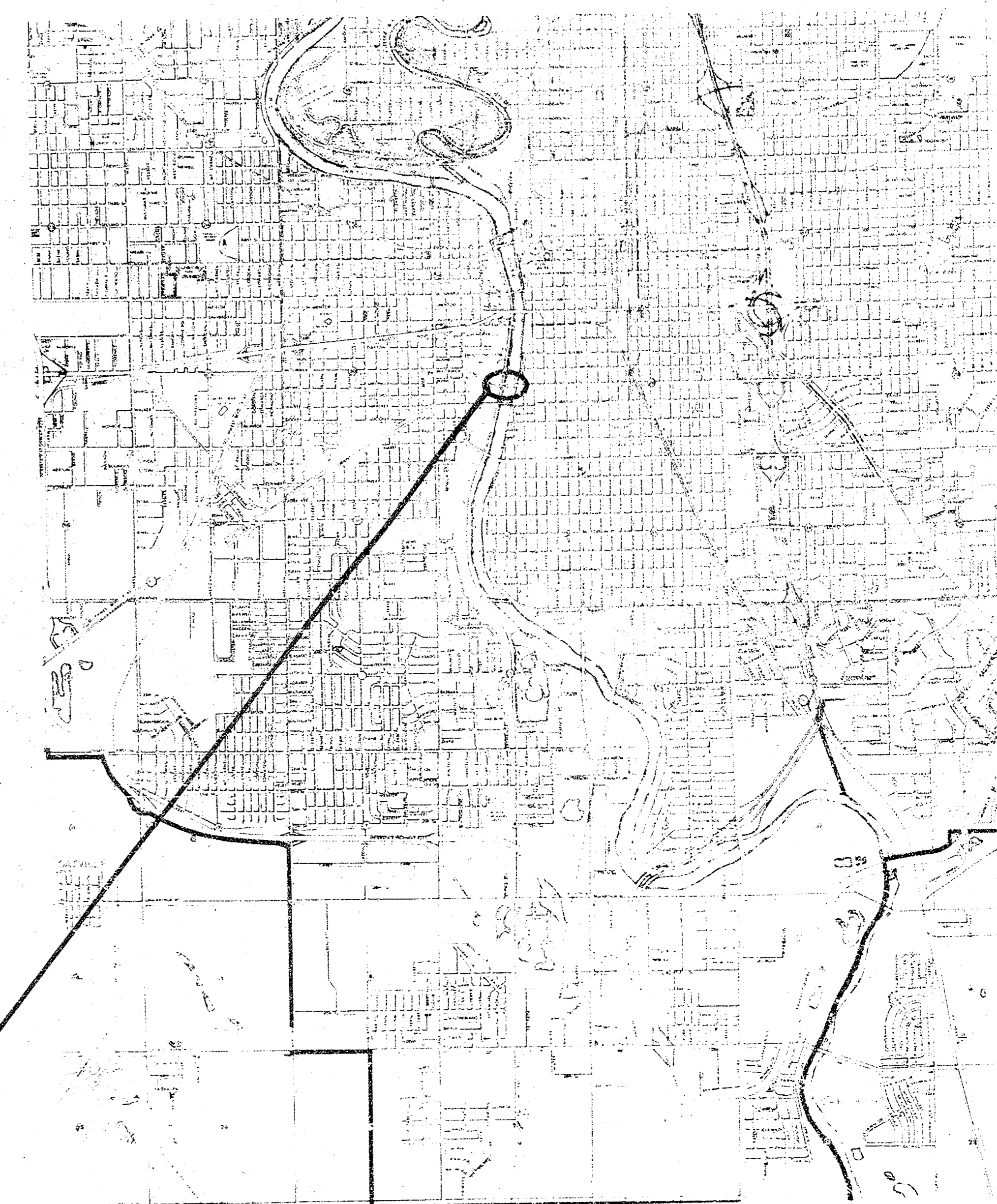
DECK REPAIR

LINCOLN STREET BRIDGE

OVER BIG ARKANSAS RIVER

INDEX TO DRAWINGS

SHEET NO.	DESCRIPTION
1	DECK REPAIR
2	DECK REPAIR
3	FASCIAE AND DECK REPAIR
4	EXPANSION JOINT REPAIR



LINCOLN STREET BRIDGE
OVER BIG ARKANSAS RIVER

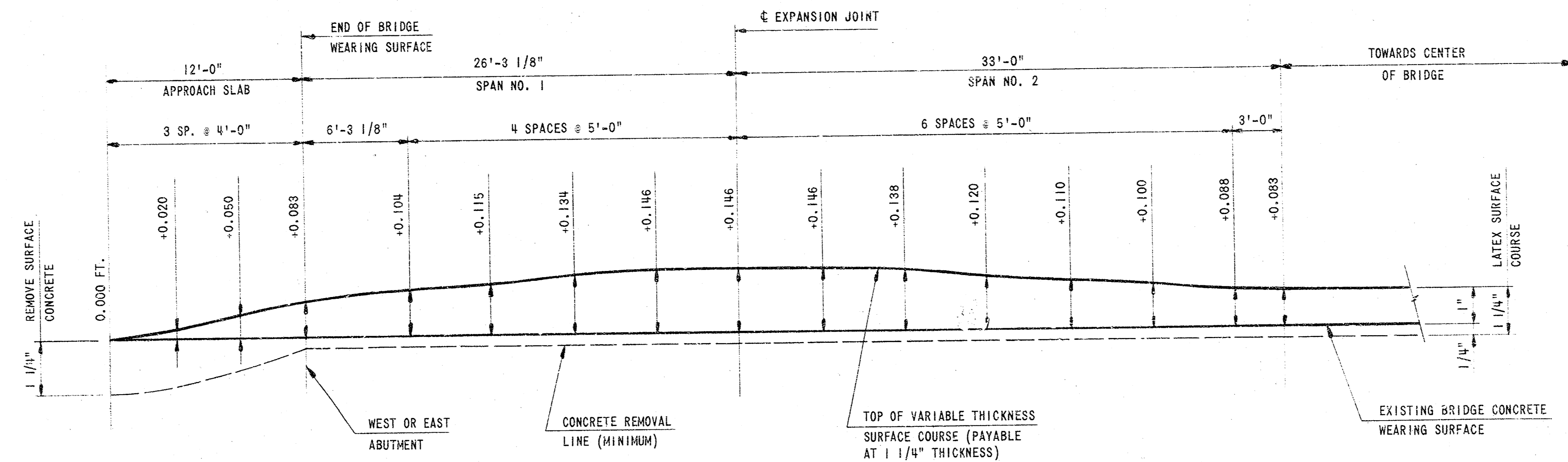


VICINITY MAP

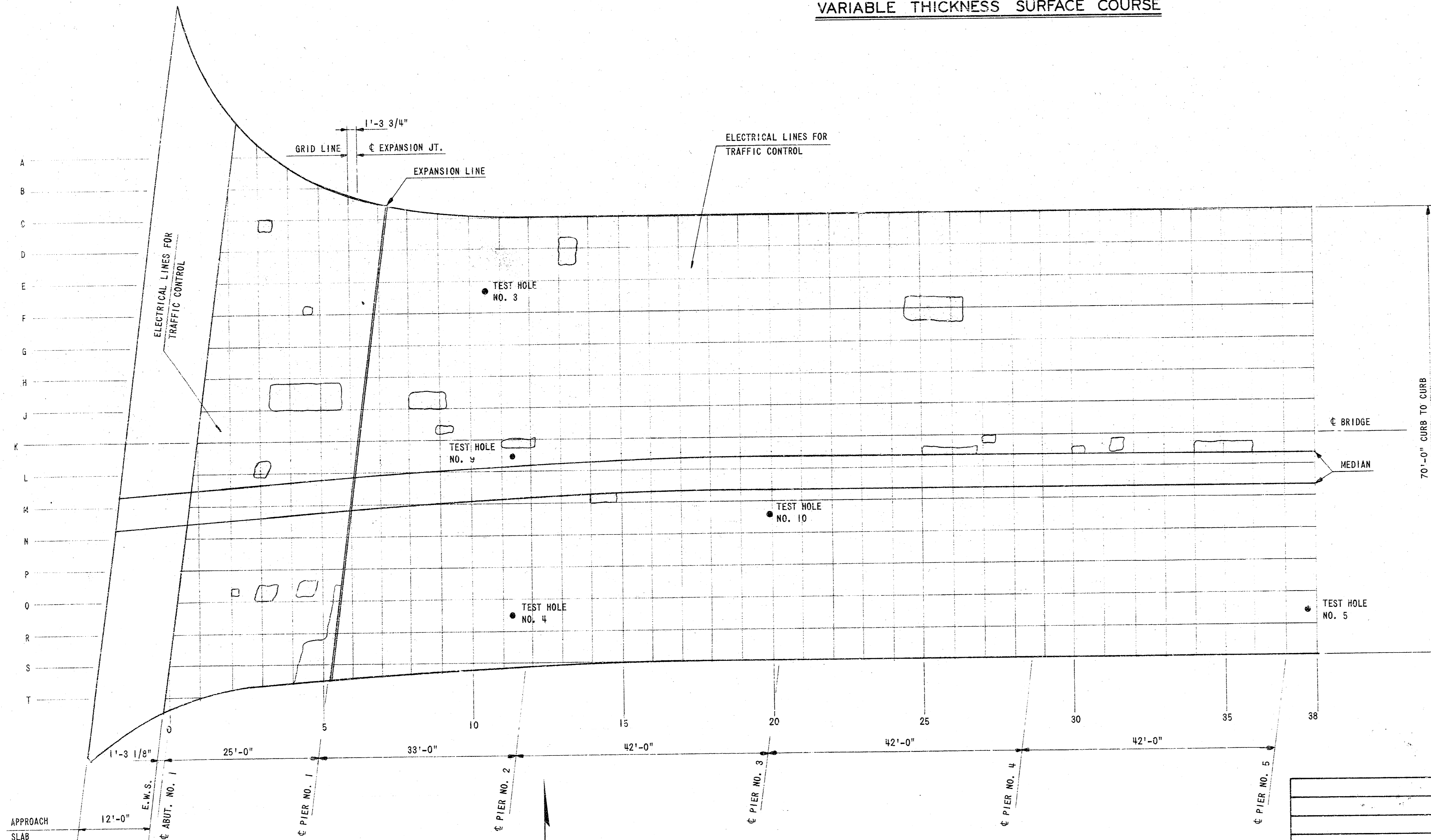


SHELLEY-WILSON
ENGINEERS • ARCHITECTS • PLANNERS

204 LAURA • WICHITA, KANSAS 67201



VARIABLE THICKNESS SURFACE COURSE



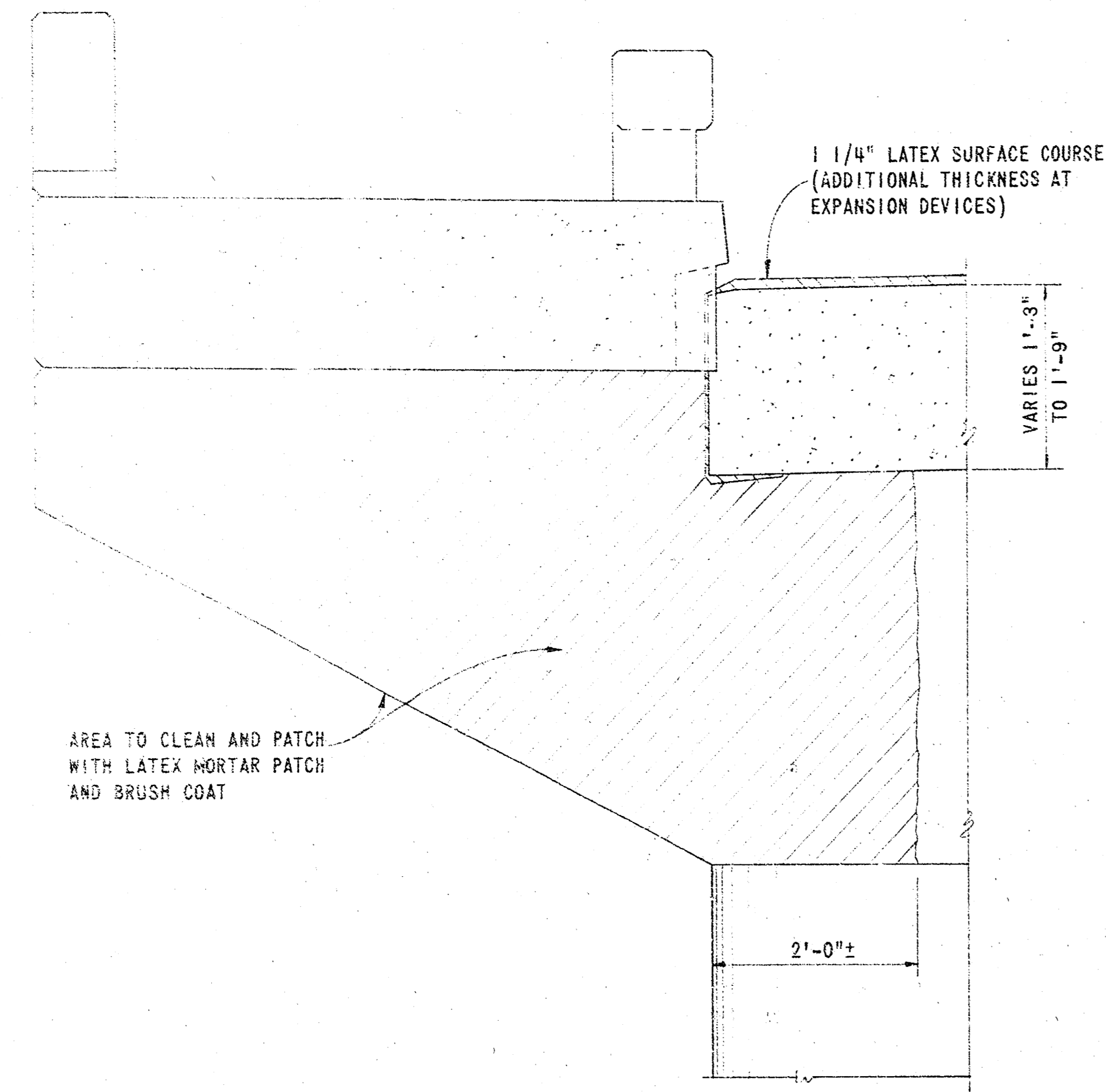
HALF PLAN SHOWING AREA PREPARATION FOR PATCHING AND TEST HOLES

SCALE: 1" = 10'

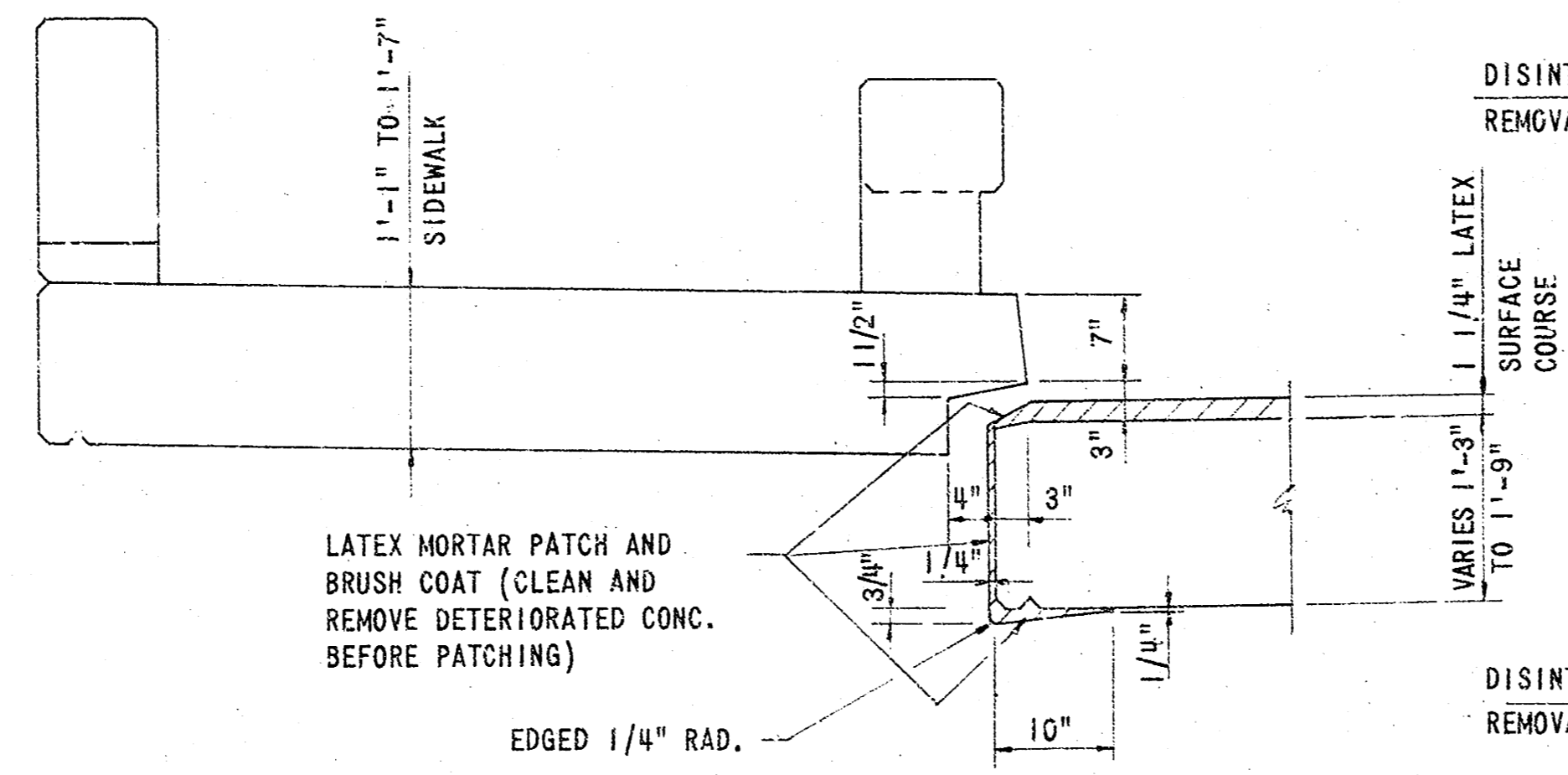
SUMMARY OF QUANTITIES		
DESCRIPTION	QUANTITY	UNIT
AREA PREPARATION FOR PATCHING	60	SQ. YD.
LATEX SURFACE COURSE	2,850	SQ. YD.
LATEX MORTAR PATCH AND BRUSH COAT	1	LUMP SUM
COMPRESSION JOINT SEAL	49.8	LIN. FT.
ELASTOMERIC EXPANSION DEVICE	132.1	LIN. FT.

CHLORIDE CONCENTRATION		
TEST HOLE NO.	PERCENT	LBS./CU. YD.
1.	0.080	3.1
2.	.061	2.3
3.	.097	3.7
4.	.044	1.7
5.	.080	3.1
6.	.095	3.6
7.	.070	2.7
8.	.068	2.6
9.	.168	7.2
10.	.023	0.9
11.	.114	4.4
12.	.170	6.5

CITY OF WICHITA DECK REPAIR LINCOLN STREET BRIDGE OVER BIG ARKANSAS RIVER		
DESIGN DLM	DRAWN HJV	DATE: DEC. 1976
		FILE NO. 76-136A
SHELLEY WILSON ENGINEERS-ARCHITECTS-PLANNERS 204 LAURA • WICHITA, KANSAS 67211		SHEET NO. 1 OF 4
REVISION	DATE	BY



SIDEWALK & GUTTER SECTION AT PIER
(ALL PIERS)



SIDEWALK & GUTTER SECTION AT MIDSPAN
(ALL FASCIAE)

GUTTER SLAB FASCIAE & PIER CAP REPAIR
(CLEAN AND PATCH W/LATEX MORTAR)

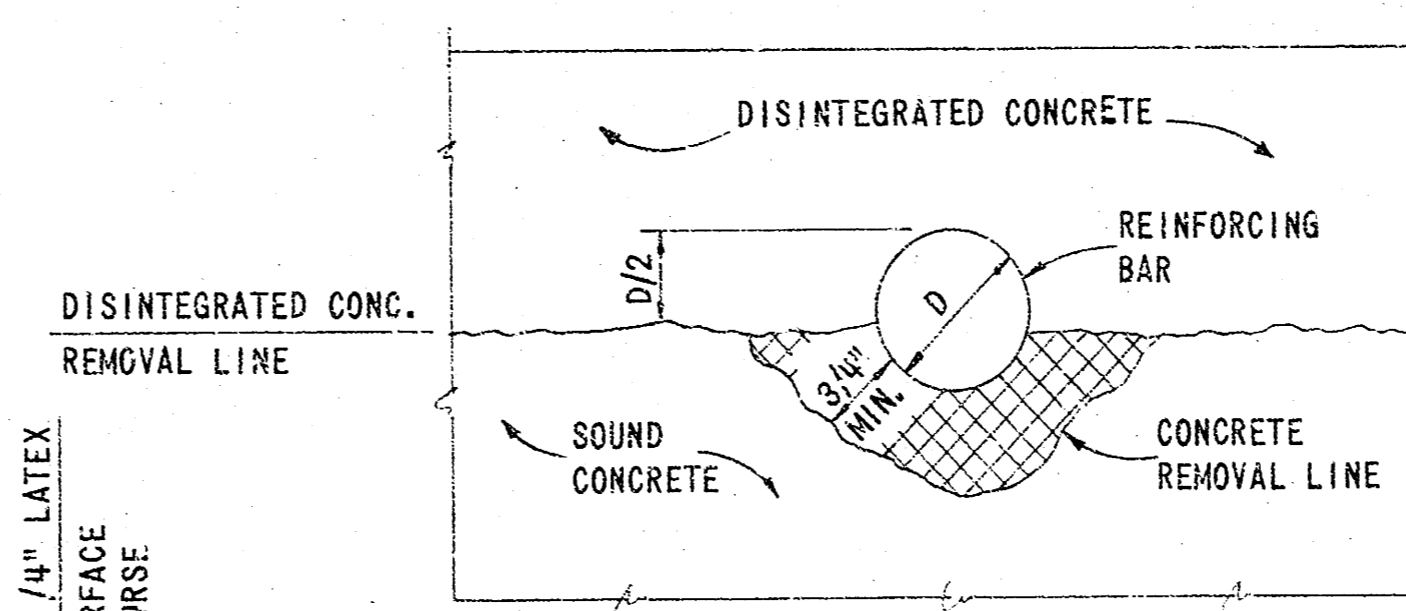


FIGURE 1

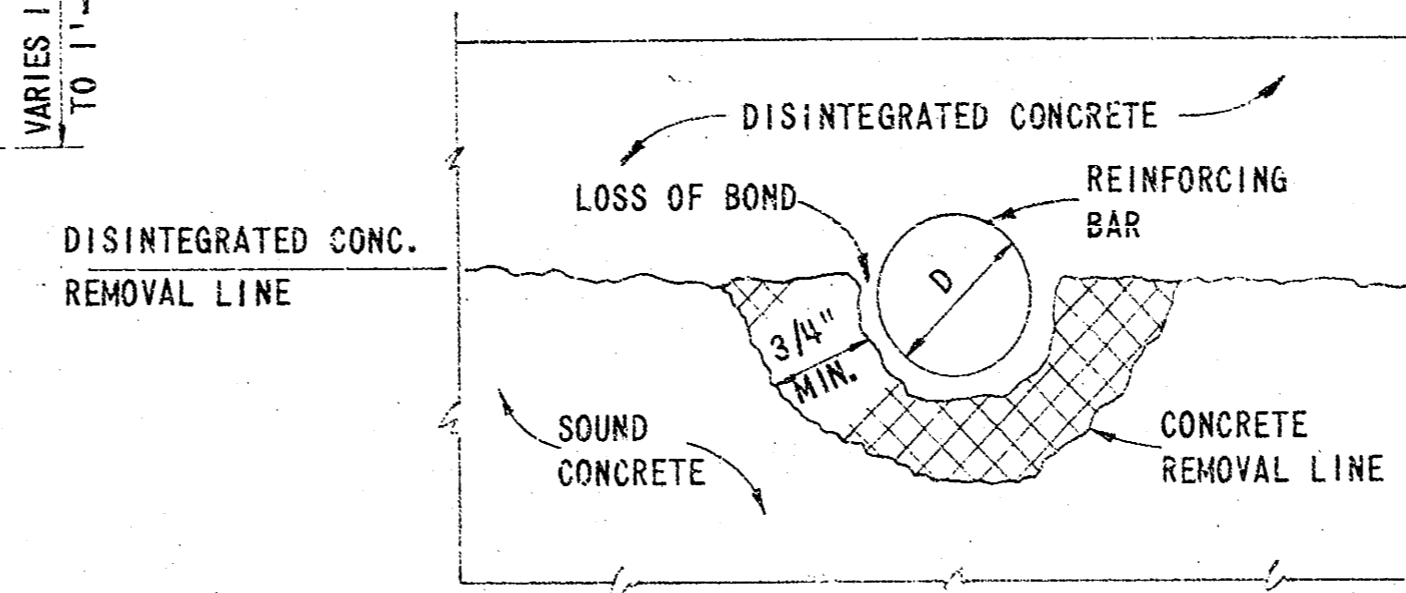


FIGURE 2

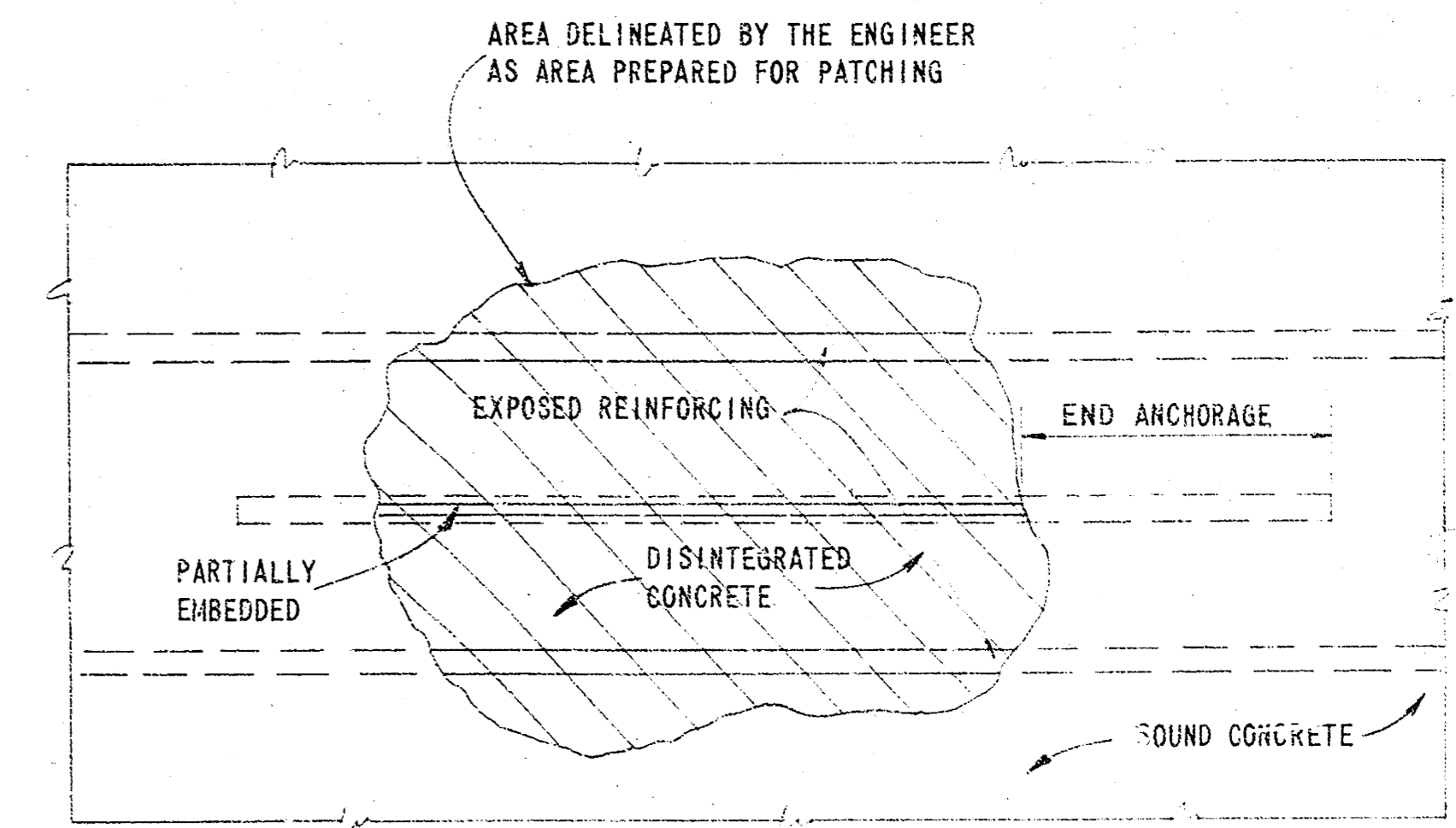

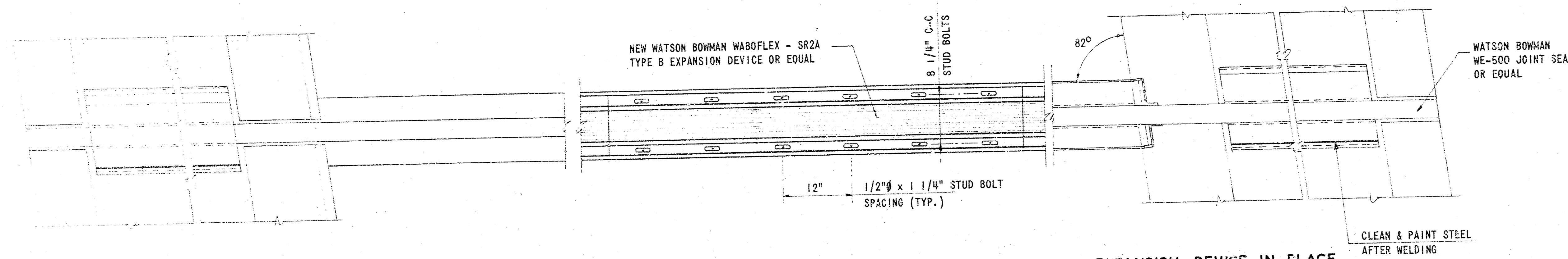


FIGURE 3
(PART PLAN)

GENERAL NOTES

- LATEX SURFACE COURSE (1 1/4" MINIMUM THICKNESS):** THIS ITEM SHALL CONSIST OF PROPERLY PREPARING THE BRIDGE ROADWAY SURFACE TO ACCEPT A LATEX MODIFIED OVERLAY AND PLACING THE OVERLAY. IT SHALL BE MEASURED BY THE SQUARE YARD AND SHALL INCLUDE ALL OF THE ROADWAY AREA OF THE BRIDGE AND OTHER AREAS AS SHOWN ON THE PLANS AND AS DIRECTED BY THE ENGINEER. SEE SPECIAL PROVISIONS.
- AREA PREPARATION FOR PATCHING:** THIS ITEM CONSISTS OF THE REMOVAL AND REPLACEMENT OF AREAS DESIGNATED BY THE ENGINEER WHICH ARE ON THE ROADWAY BETWEEN EACH END OF THE BRIDGE. SEE SPECIAL PROVISIONS.
- CHIPPING AND CLEANING AROUND REINFORCING:** WHERE MORE THAN HALF THE DIAMETER OF THE STEEL IS EXPOSED (FIGURE 1) OR WHERE THE BOND BETWEEN EXISTING CONCRETE AND THE REINFORCING STEEL HAS BEEN DESTROYED (FIGURE 2) THE CONCRETE ADJACENT TO THE BAR SHALL BE REMOVED TO A DEPTH THAT WILL PERMIT CONCRETE TO BOND TO THE ENTIRE PERIPHERY OF THE BAR SO EXPOSED. A MINIMUM OF 3/4" CLEARANCE SHALL BE REQUIRED.
- REINFORCING:** CARE SHALL BE EXERCISED TO PREVENT CUTTING, STRETCHING, OR DAMAGING ANY EXPOSED REINFORCING STEEL. EXTREME CARE SHALL BE EXERCISED TO AVOID BREAKING THE BOND BETWEEN THE REINFORCING STEEL AND CONCRETE WHERE BARS ARE PARTIALLY EXPOSED YET REMAIN ANCHORED IN SOUND CONCRETE NEAR THE ENDS OR WHERE MORE THAN HALF THE BAR IS BENEATH THE CONCRETE REMOVAL LINE (FIGURE 3).
- LATEX MORTAR PATCH AND BRUSH COAT:** THIS ITEM SHALL CONSIST OF CLEANING AND PREPARING THE REPAIR AREAS, AND APPLYING LATEX MORTAR EITHER BY TROWEL AND/OR BRUSH. THIS ITEM SHALL BE BID LUMP SUM WHICH SHALL INCLUDE ALL MATERIALS, LABOR, AND EQUIPMENT TO PROPERLY REPAIR THE AREAS SO DESIGNATED HEREIN.

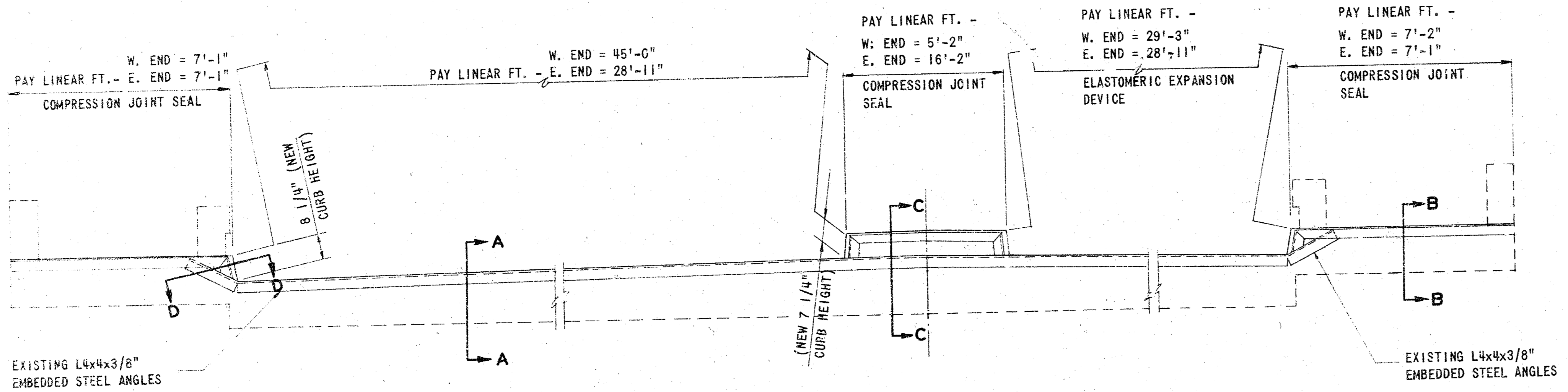
DESIGN DLM			DRAWN RWA			DATE: DEC. 1976		
REVISION			DATE			BY		
CITY OF WICHITA FASCIAE AND DECK REPAIR LINCOLN STREET BRIDGE OVER BIG ARKANSAS RIVER			 SHELLEY-WILSON ENGINEERS-ARCHITECTS-PLANNERS <small>244 LAURA • WICHITA, KANSAS 67211</small>			FILE NO. 76-136A SHEET NO. 3 OF 4		



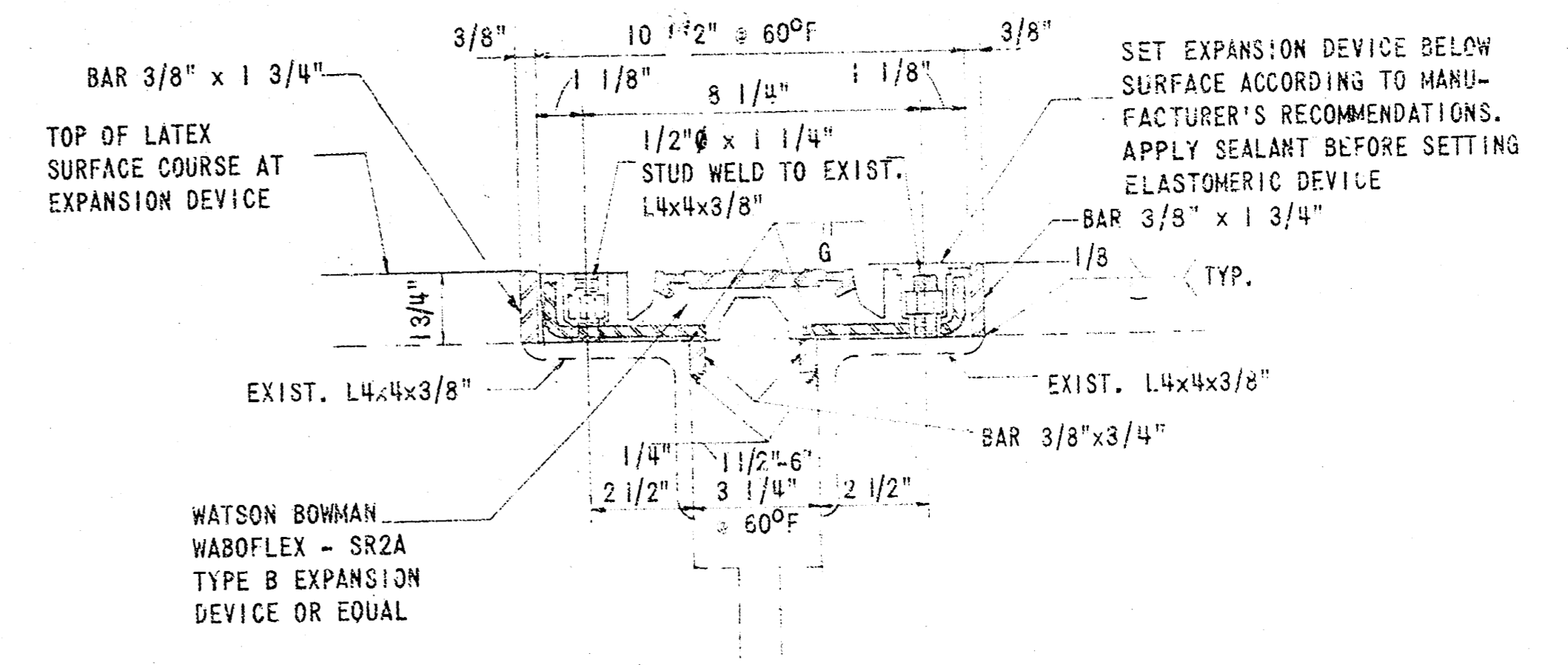
EXISTING SLAB & EXPANSION DEVICE

SLAB & NEW ELASTOMERIC EXPANSION DEVICE IN PLACE

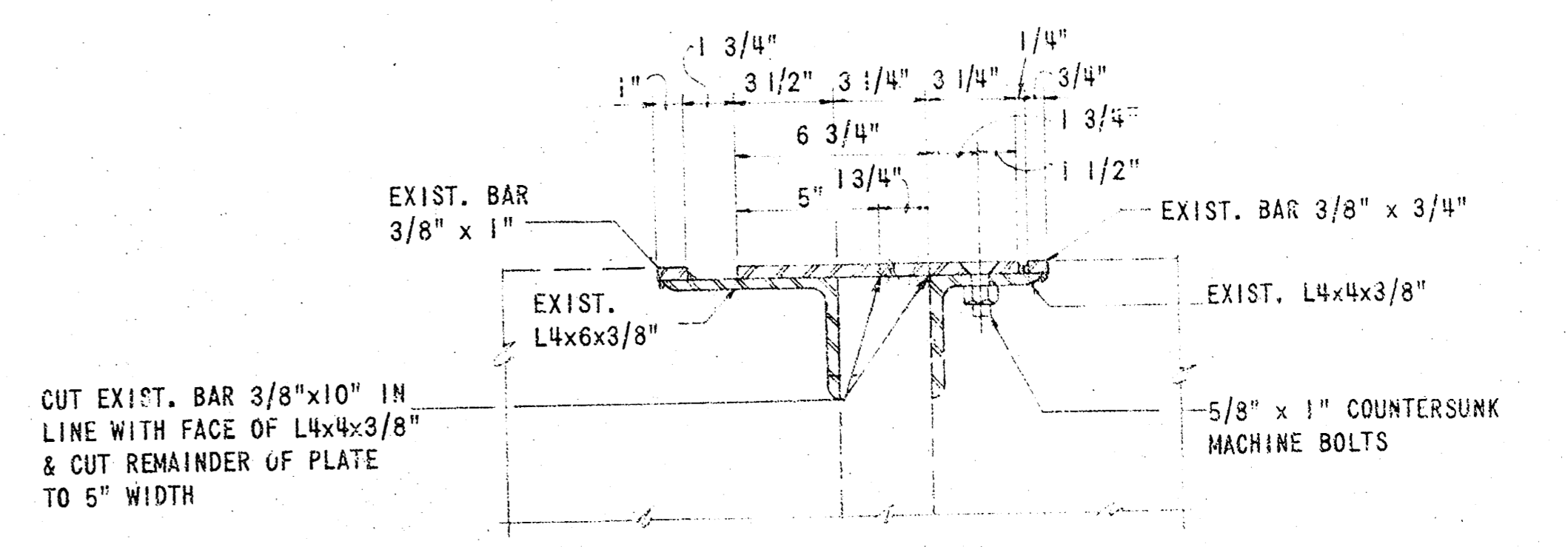
PLAN OF EXPANSION DEVICE



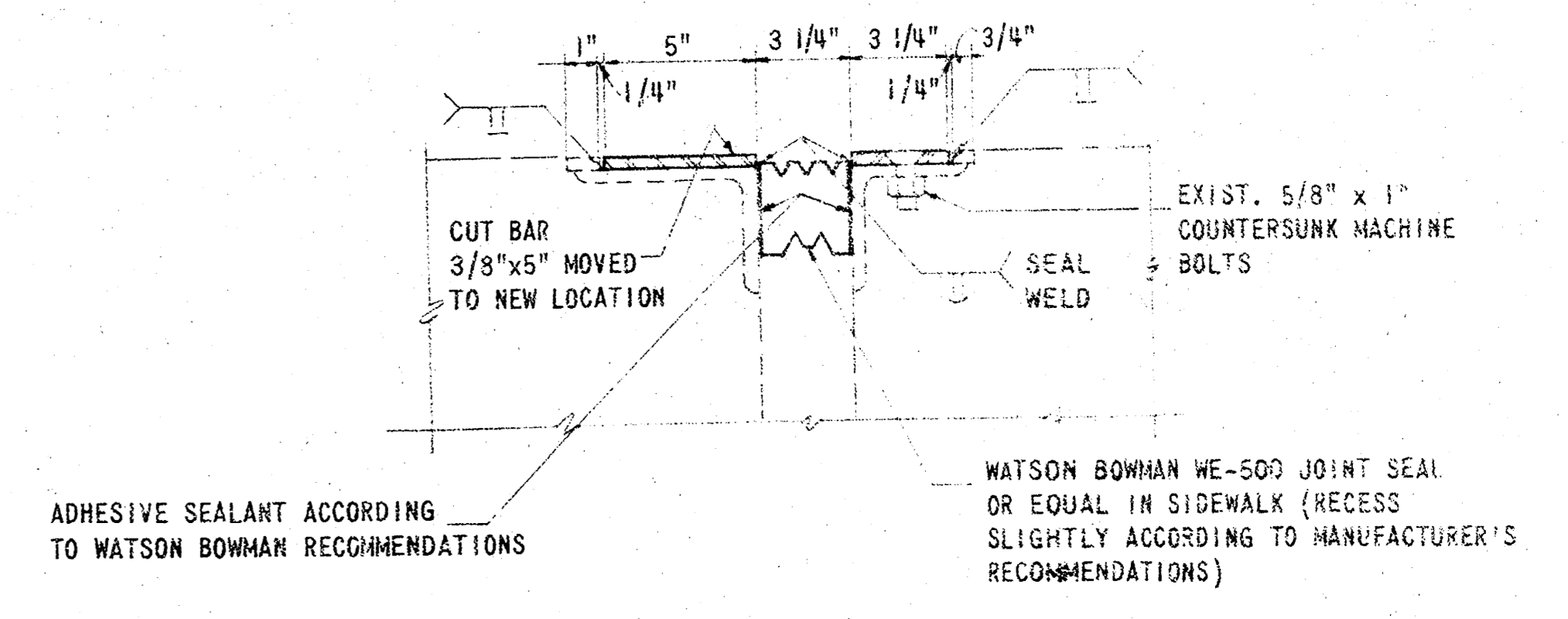
BRIDGE SECTION AT EXPANSION DEVICE



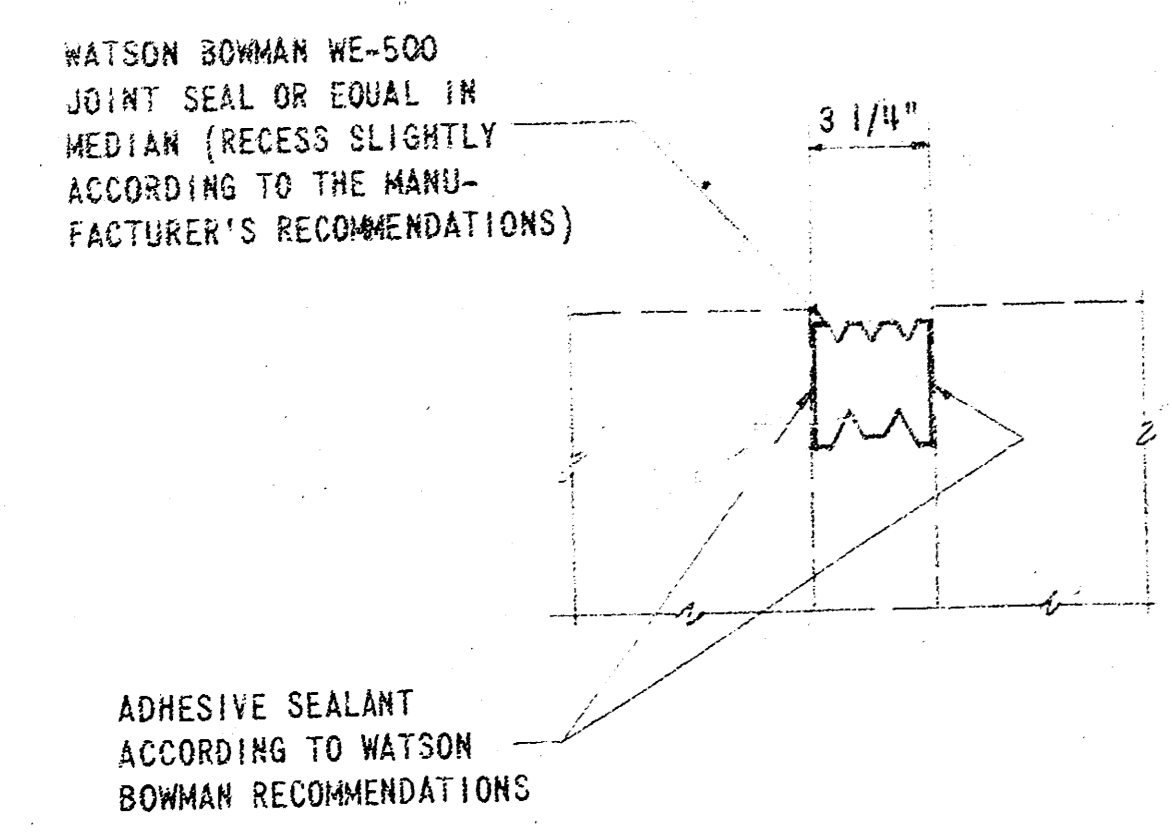
NEW EXPANSION DEVICE AT ROADWAY
SECTION A-A



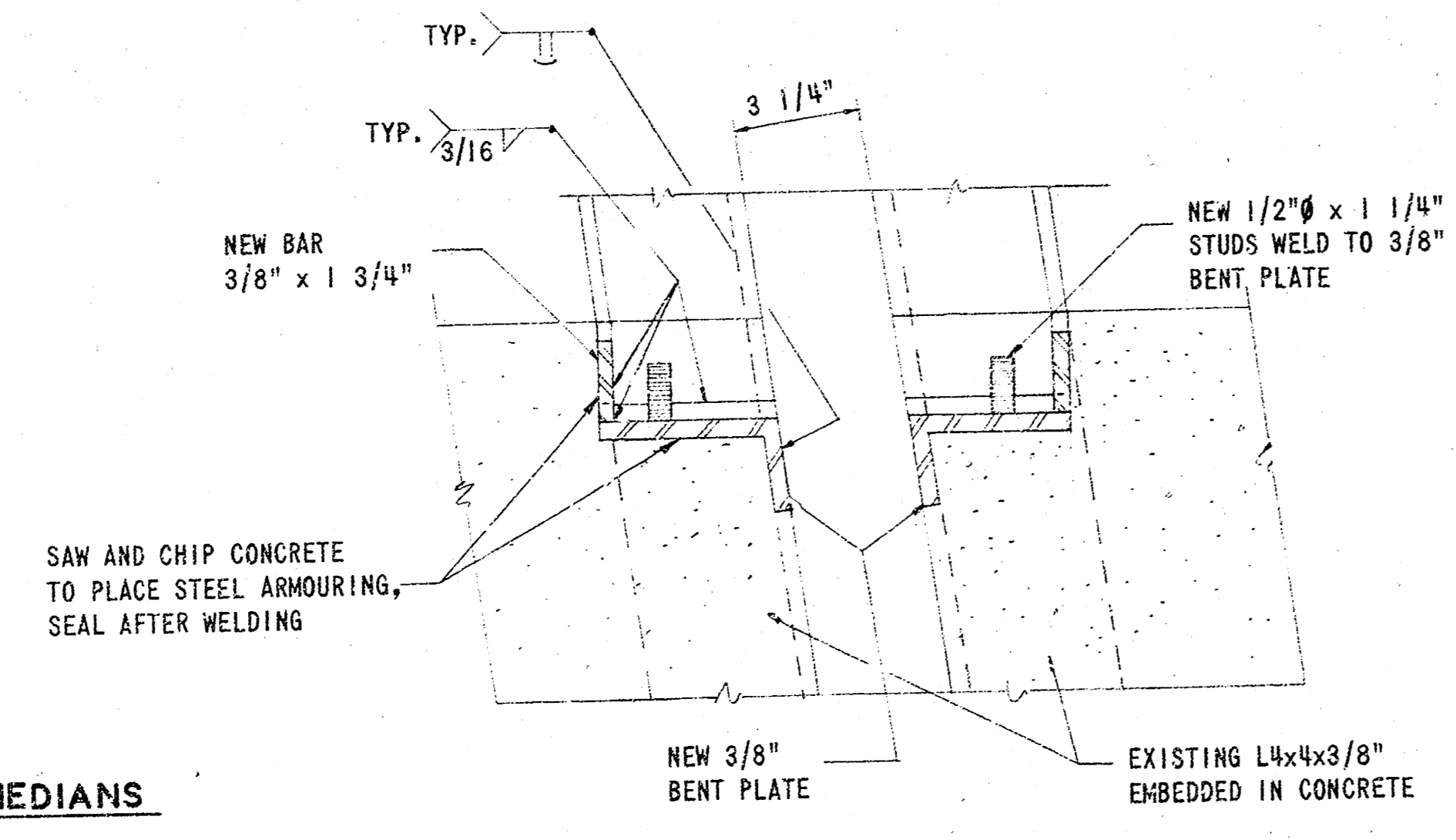
EXISTING EXPANSION DEVICE AT SIDEWALK
SECTION B-B



NEW COMPRESSION JOINT SEAL AT SIDEWALKS
SECTION B-B



NEW COMPRESSION JOINT SEAL AT MEDIANS
SECTION C-C




SECTION D-D

NOTES:

1. THE CONTRACTOR SHALL VERIFY ALL FIELD DIMENSIONS BEFORE PREPARING FABRICATION DRAWINGS.
2. ALL DETAIL DRAWINGS AND MATERIALS SHALL BE APPROVED BY THE ENGINEER BEFORE MATERIAL IS FABRICATED.

REVISION	DATE	BY

CITY OF WICHITA
EXPANSION JOINT REPAIR
LINCOLN STREET BRIDGE
OVER
BIG ARKANSAS RIVER

DESIGN DLM	DRAWN RWA	DATE: DEC. 1976
 SHELLEY-WILSON ENGINEERS-ARCHITECTS-PLANNERS <small>214 LAURA • WICHITA, KANSAS 67211</small>		FILE NO. 76-136A
		SHEET NO. 4 OF 4