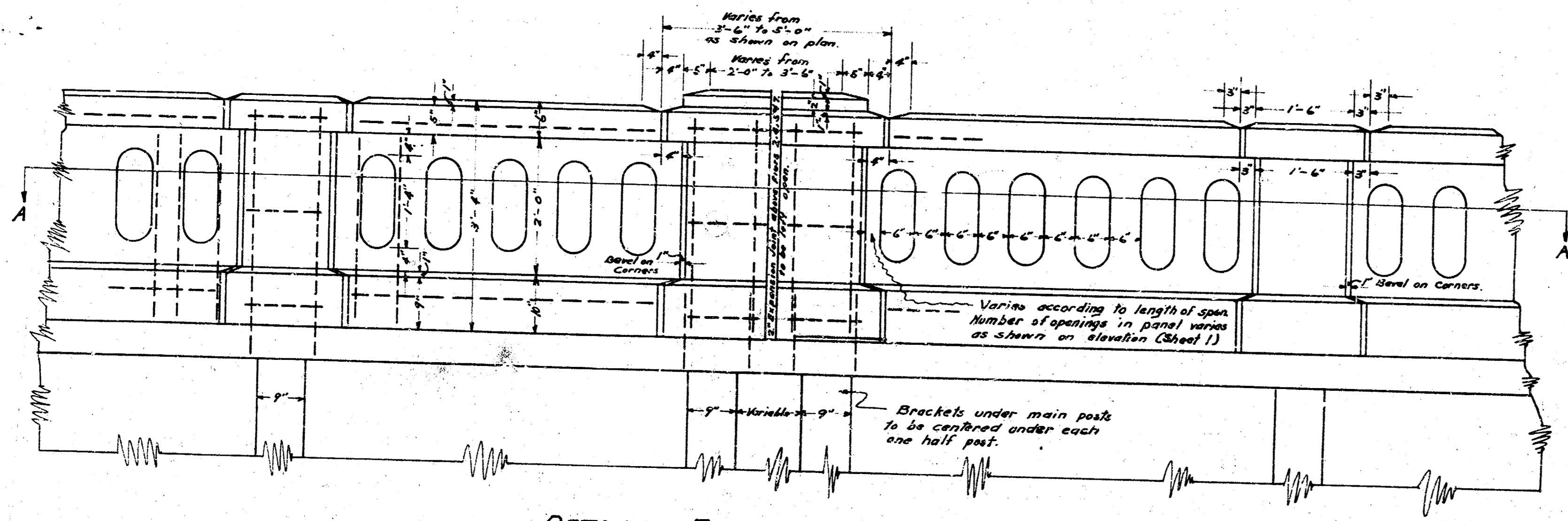
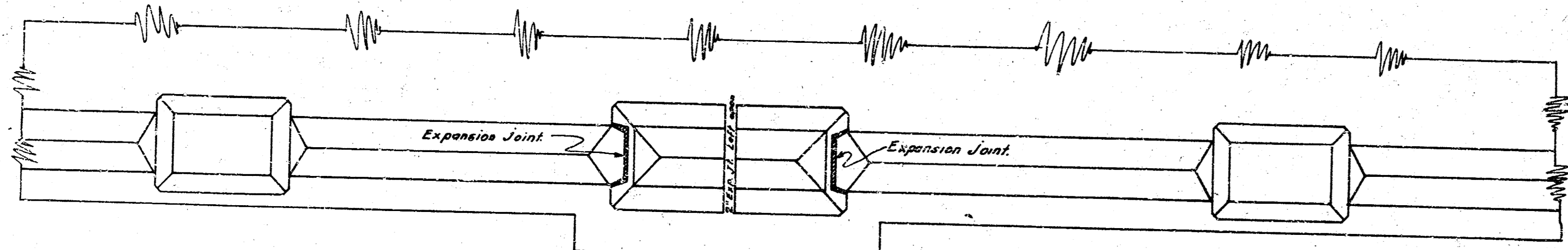


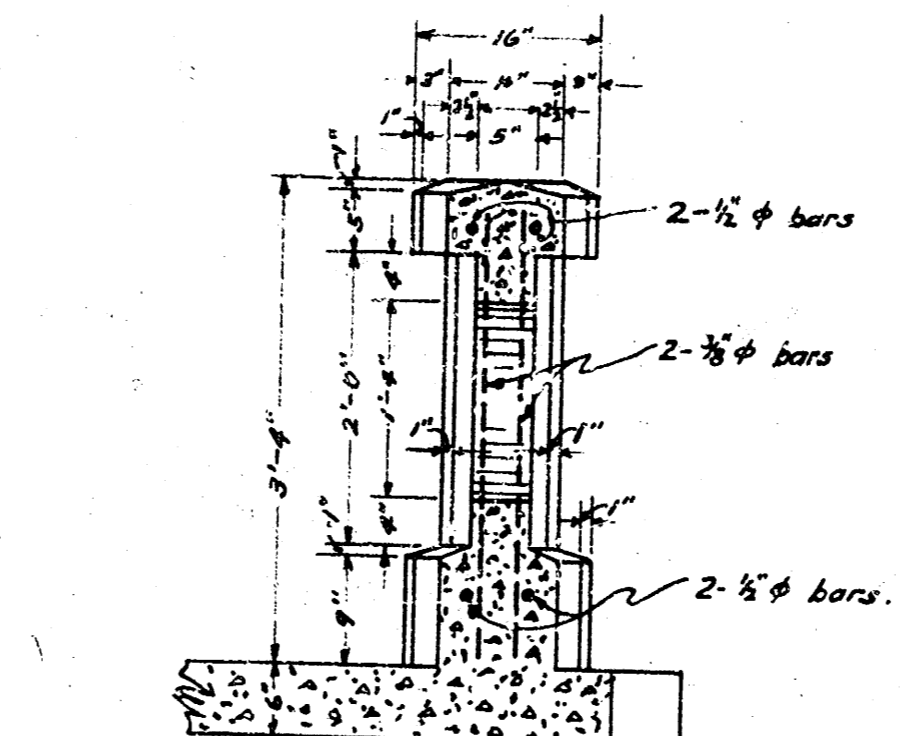
HORIZONTAL SECTION OF HANDRAIL AT LINE A-A ON ELEVATION.
Scale 1/4" = 1'-0"



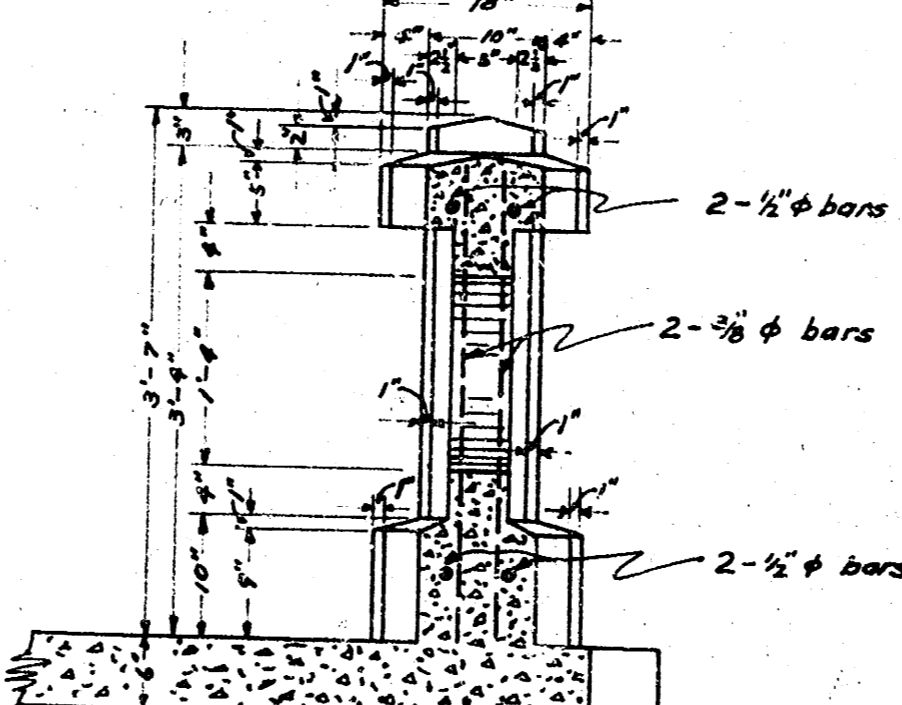
DETAILED ELEVATION OF HANDRAIL.
Scale 1/4" = 1'-0"



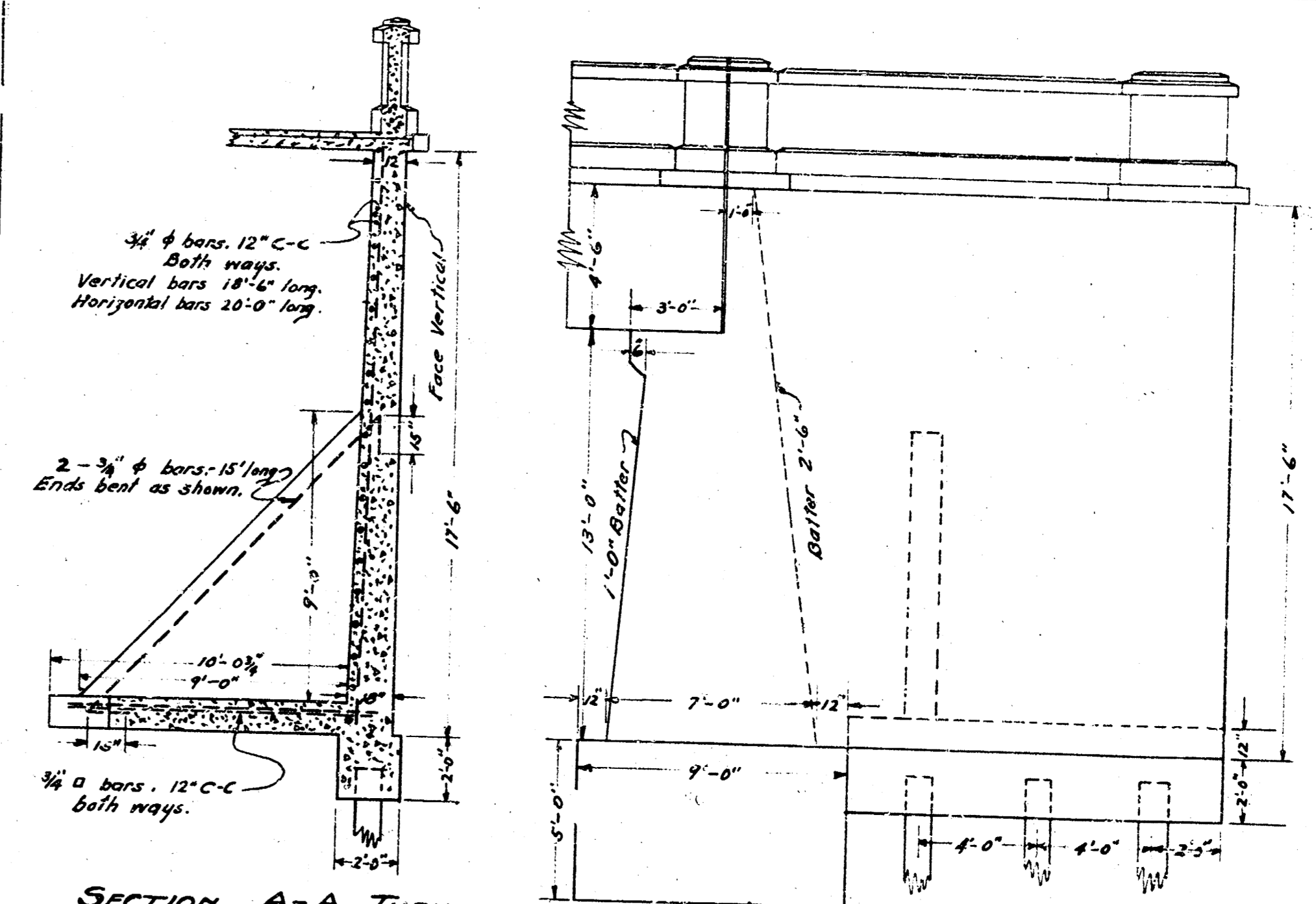
PLAN OF HANDRAIL
Scale 1/4" = 1'-0"



VERTICAL SECTION OF HANDRAIL SHOWING SECONDARY POST
Scale 1/4" = 1'-0"

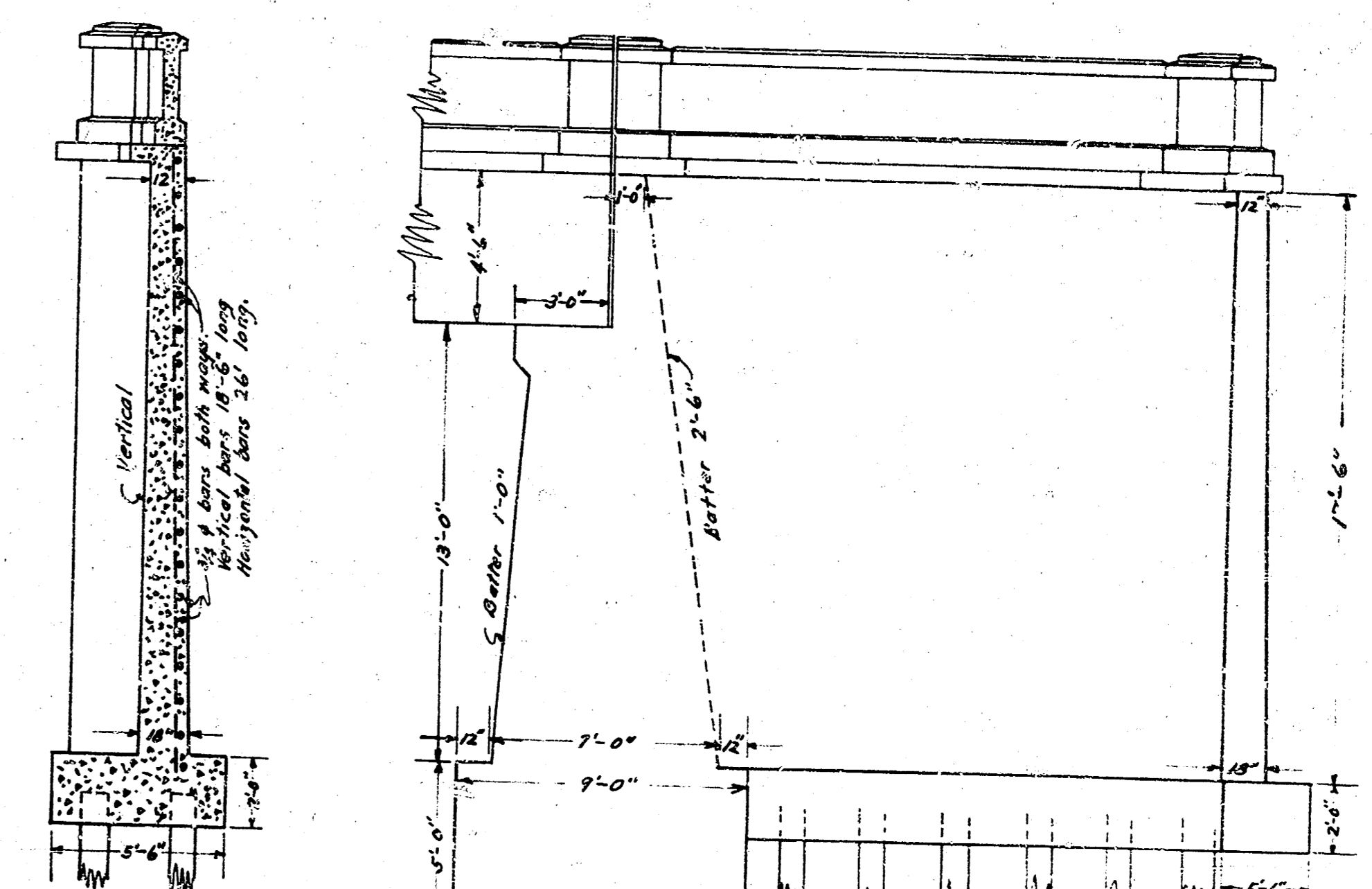


VERTICAL SECTION OF HANDRAIL SHOWING PRIMARY POST
Scale 1/4" = 1'-0"



SECTION A-A, THRU NORTH ABUTMENT WALL (SHEET 1)
Scale 1/4" = 1'-0"

ELEVATION OF ABUTMENTS FOR NORTH END OF BRIDGE.
Scale 1/4" = 1'-0"



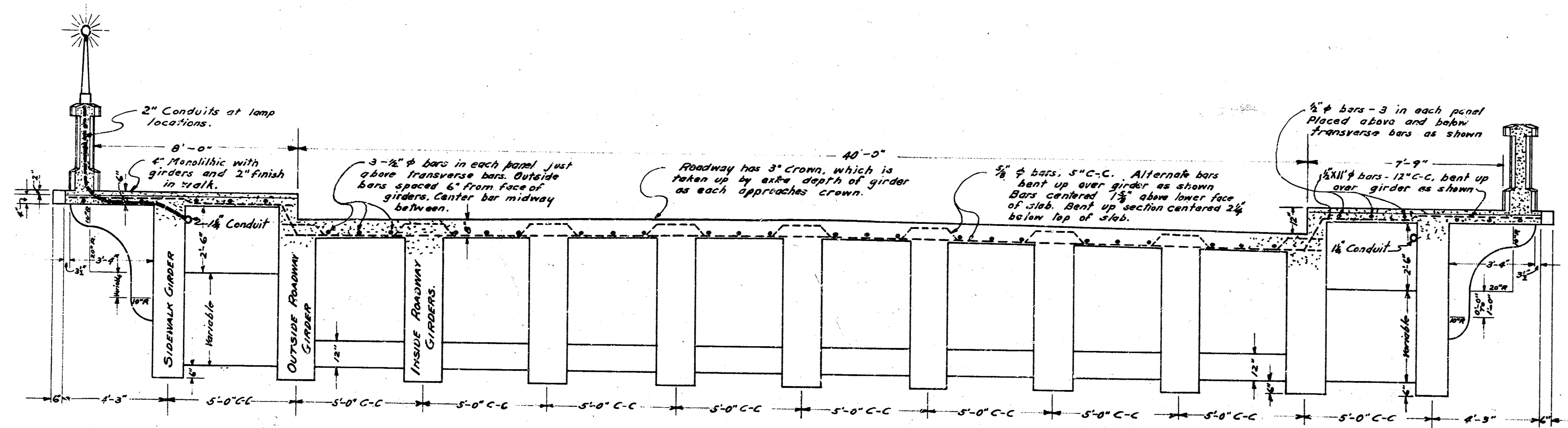
CROSS SECTION OF SOUTH ABUTMENT WALL AT B-B, 5 FT. FROM END OF ABUTMENT. (SHEET 1)
Scale 1/4" = 1'-0"

ELEVATION OF ABUTMENT FOR SOUTH END OF BRIDGE.
Scale 1/4" = 1'-0"

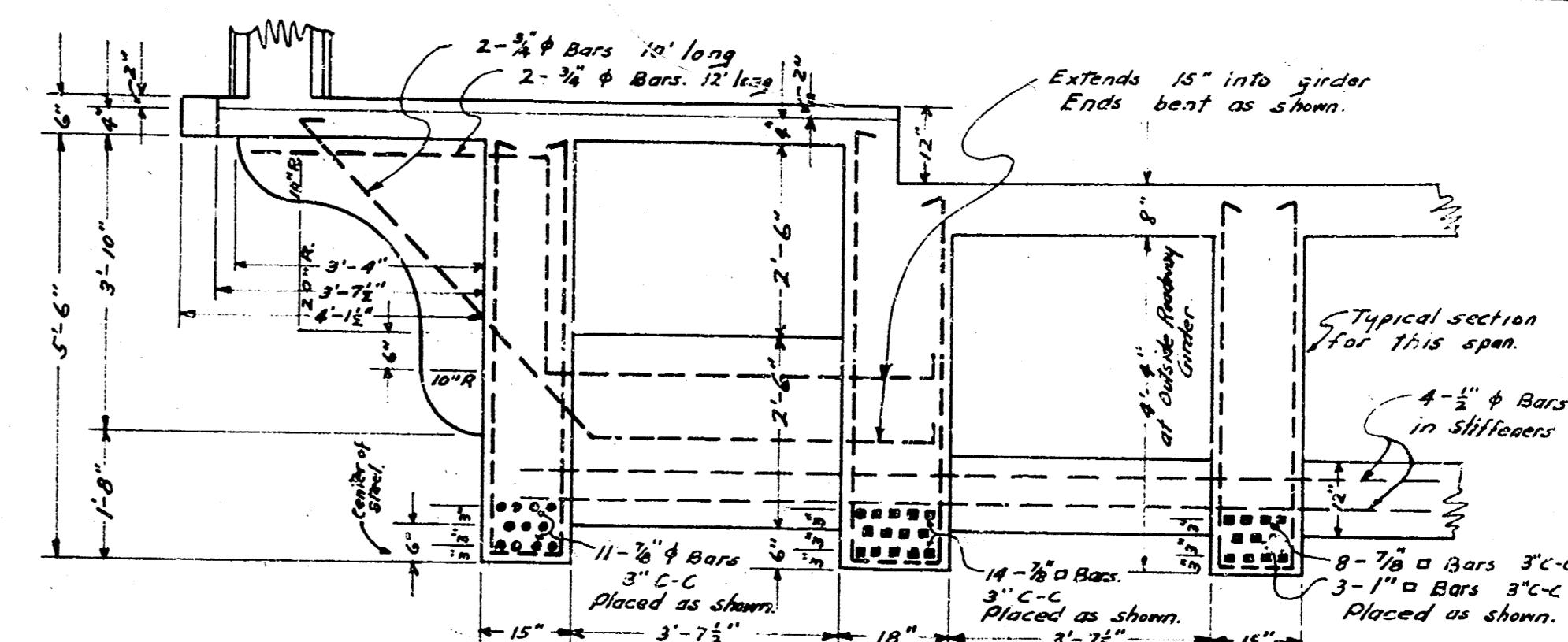
SENECA STREET BRIDGE.
DETAILS OF HANDRAIL AND ABUTMENT WALLS.
WICHITA, KANSAS.
DESIGNED BY RLBROCKWAY & DCMOENRING
DRAWN BY HRMUSICK
AUG. 1924
IN 5 SHEETS SHEET 4

APPROVED BY BOARD OF CITY COMMISSIONERS
SEPTEMBER 2ND 1924
M. J. CLEGG

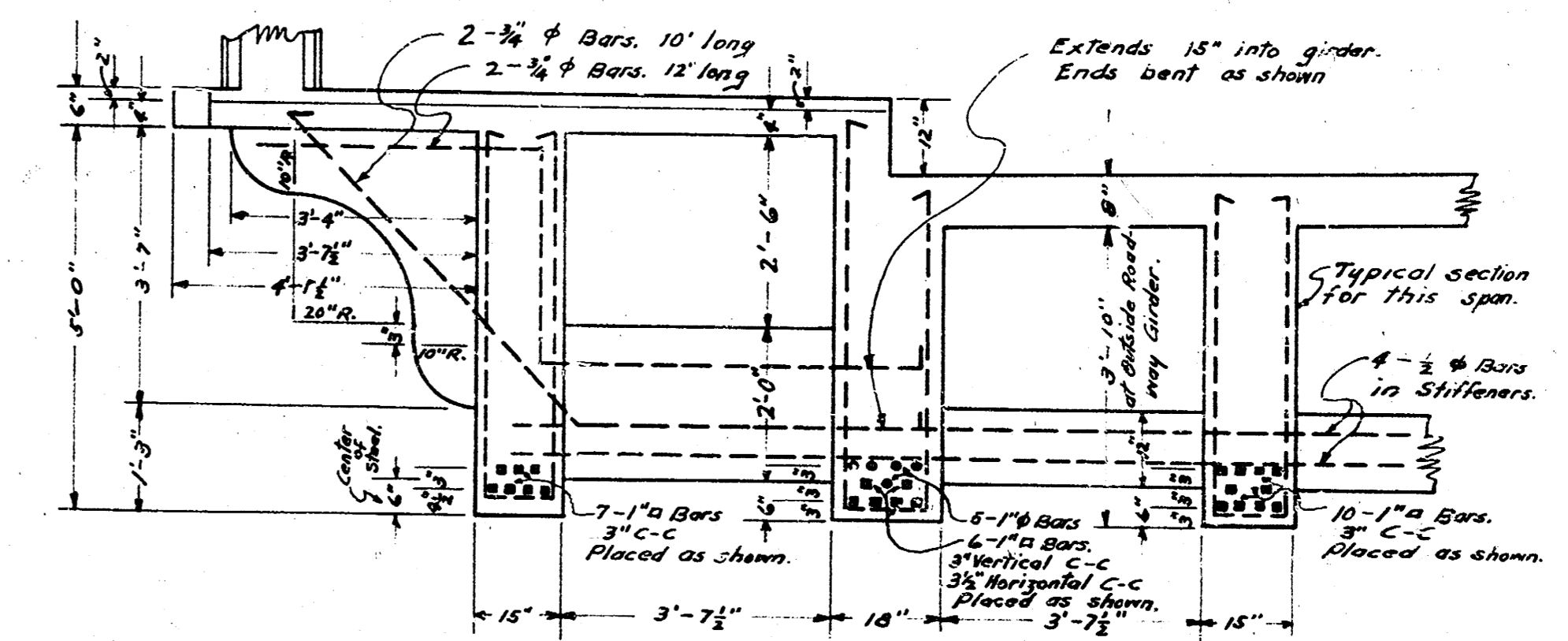
Seneca St.
Big Ark. R.
Bridges



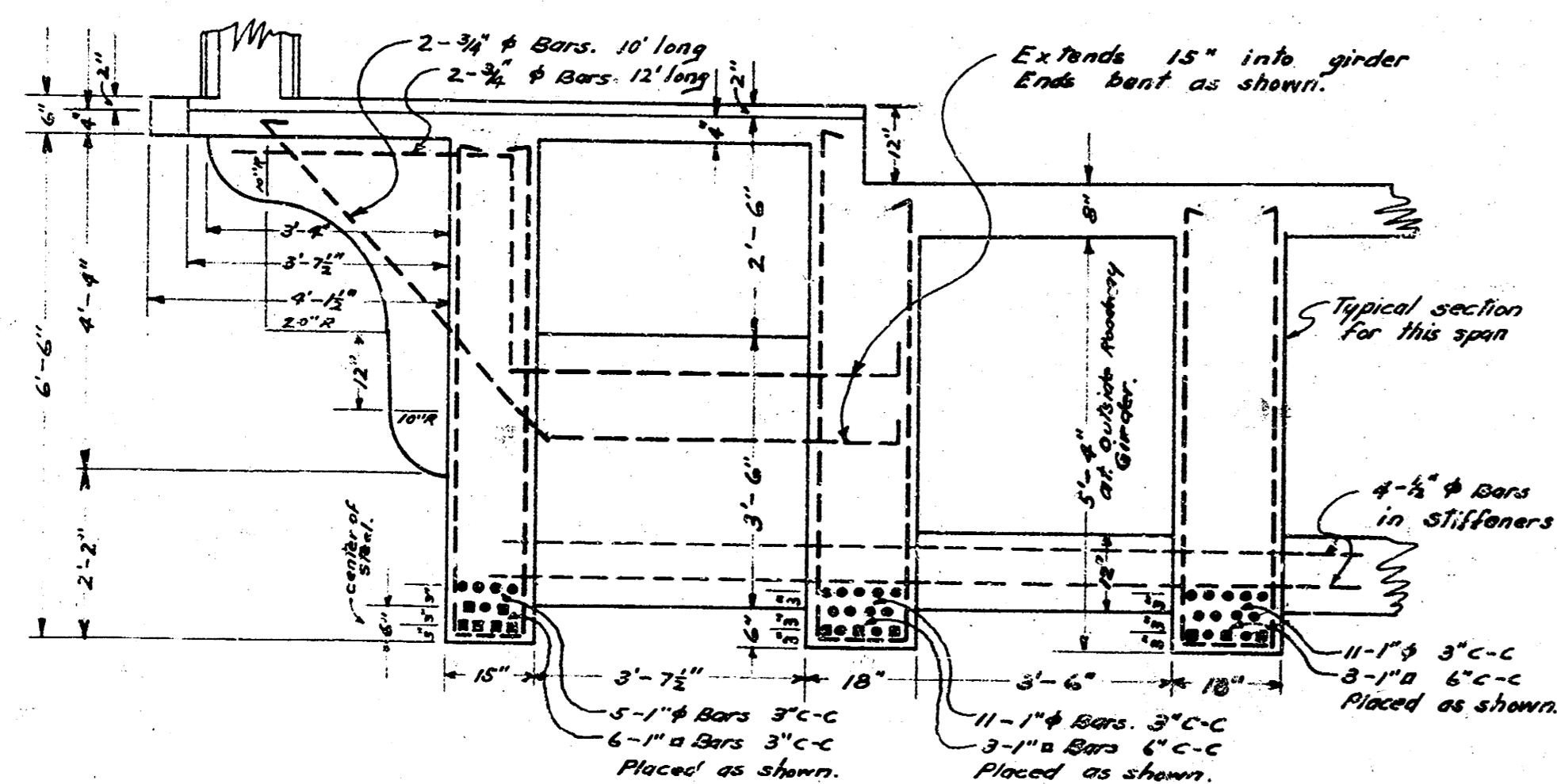
GENERAL CROSS SECTION OF BRIDGE
SEE DETAILS ON THIS SHEET FOR GIRDERS IN EACH SPAN
Scale: 1/4" = 1'-0"



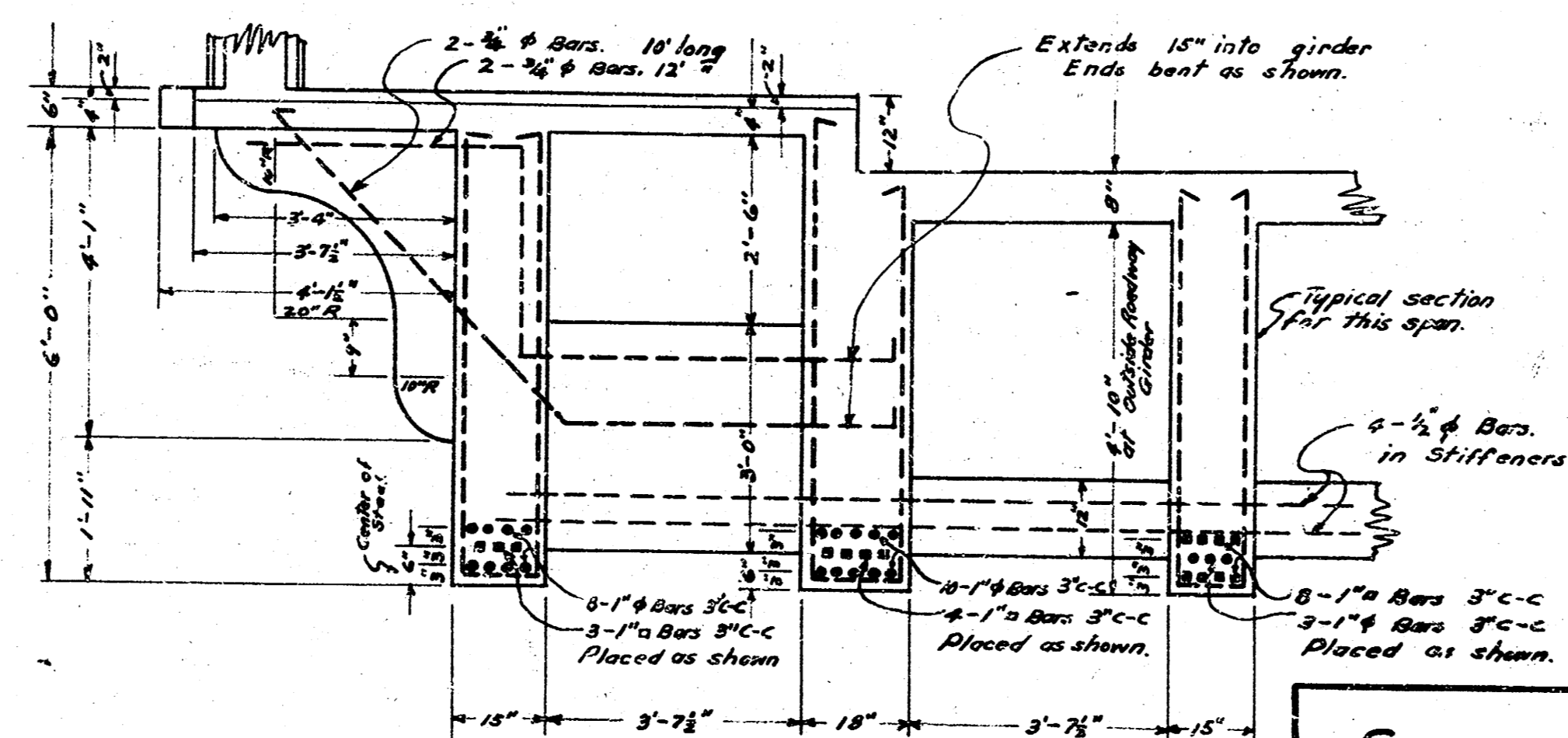
CROSS SECTION OF GIRDERS IN 43 FT. SPAN.
Scale: 1/2" = 1'-0"



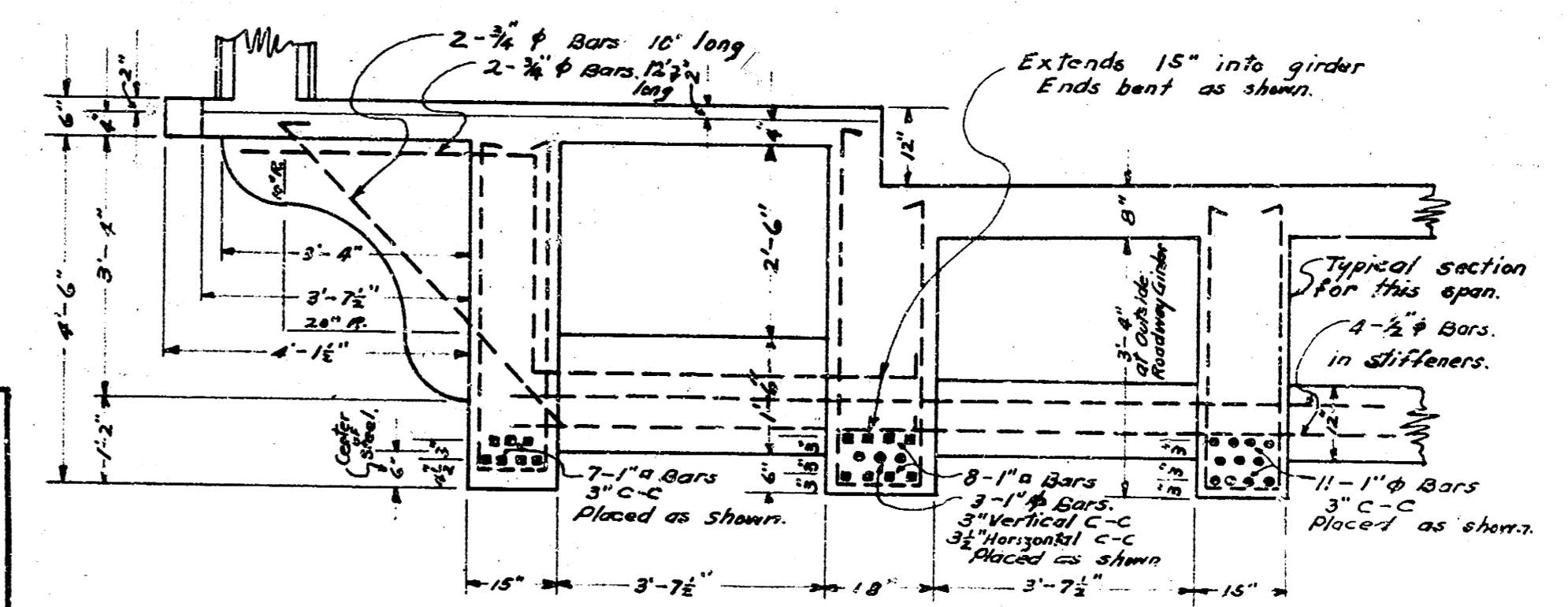
CROSS SECTION OF GIRDERS IN 39 FT. SPAN
Scale: 1/2" = 1'-0"



CROSS SECTION OF GIRDERS IN 51 FT. SPAN.
Scale: 1/2" = 1'-0"



CROSS SECTION OF GIRDERS IN 47 FT. SPAN
Scale: 1/2" = 1'-0"

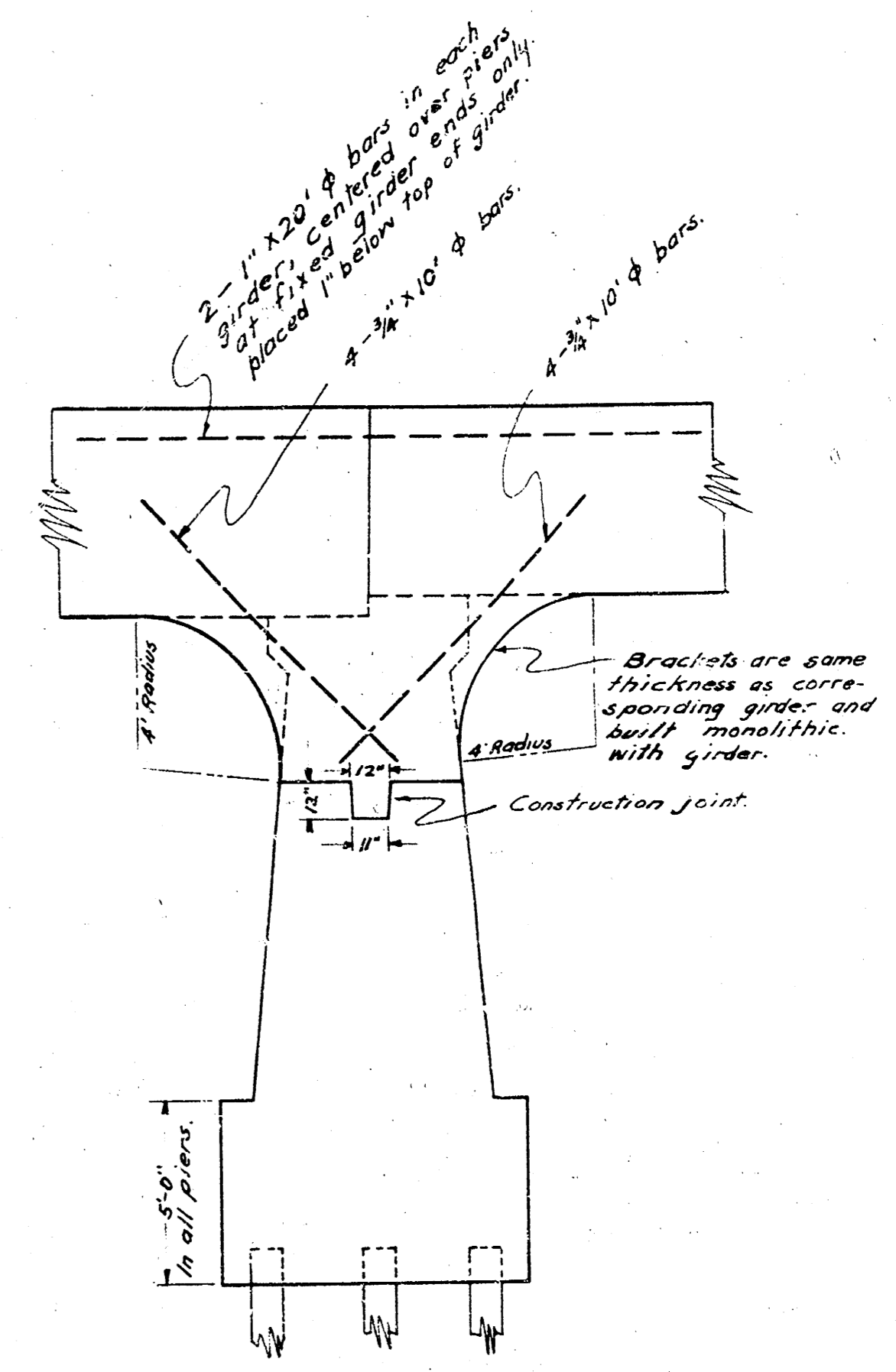
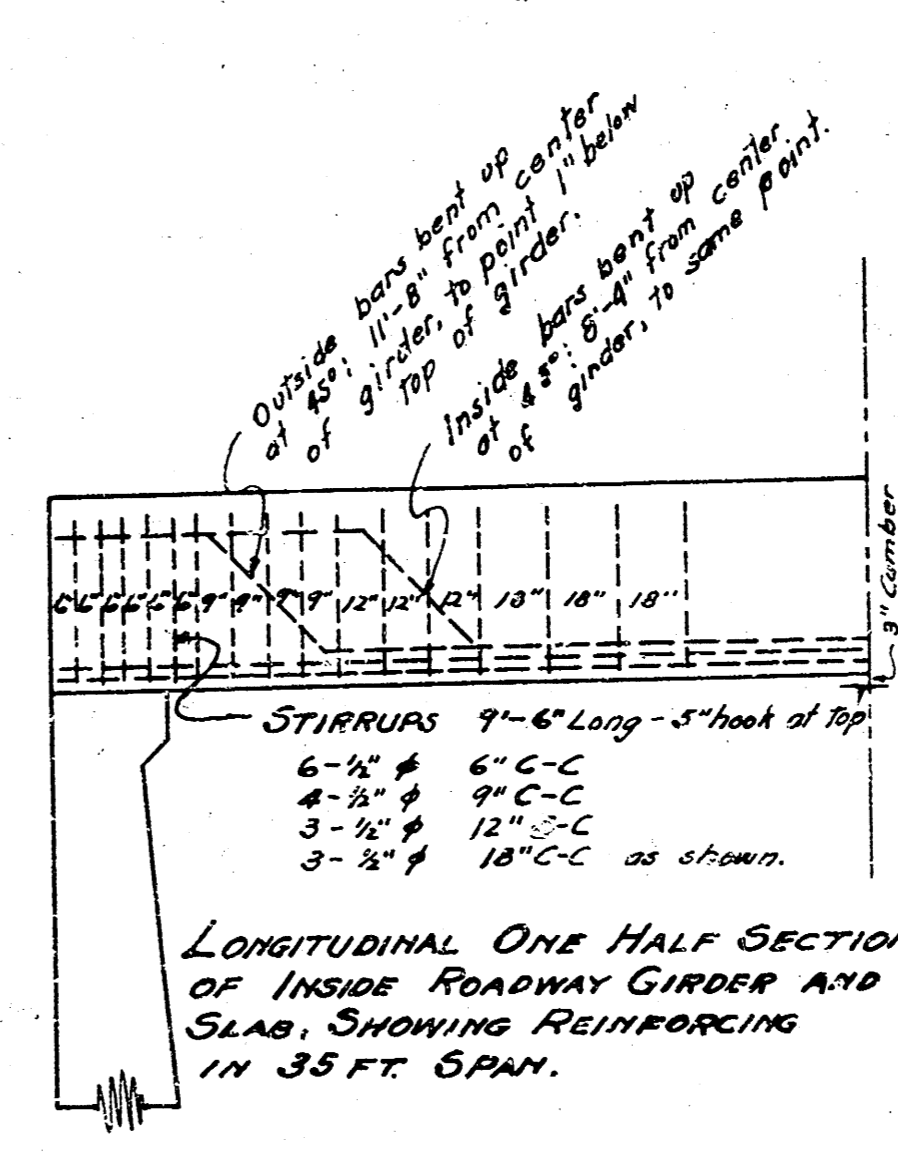
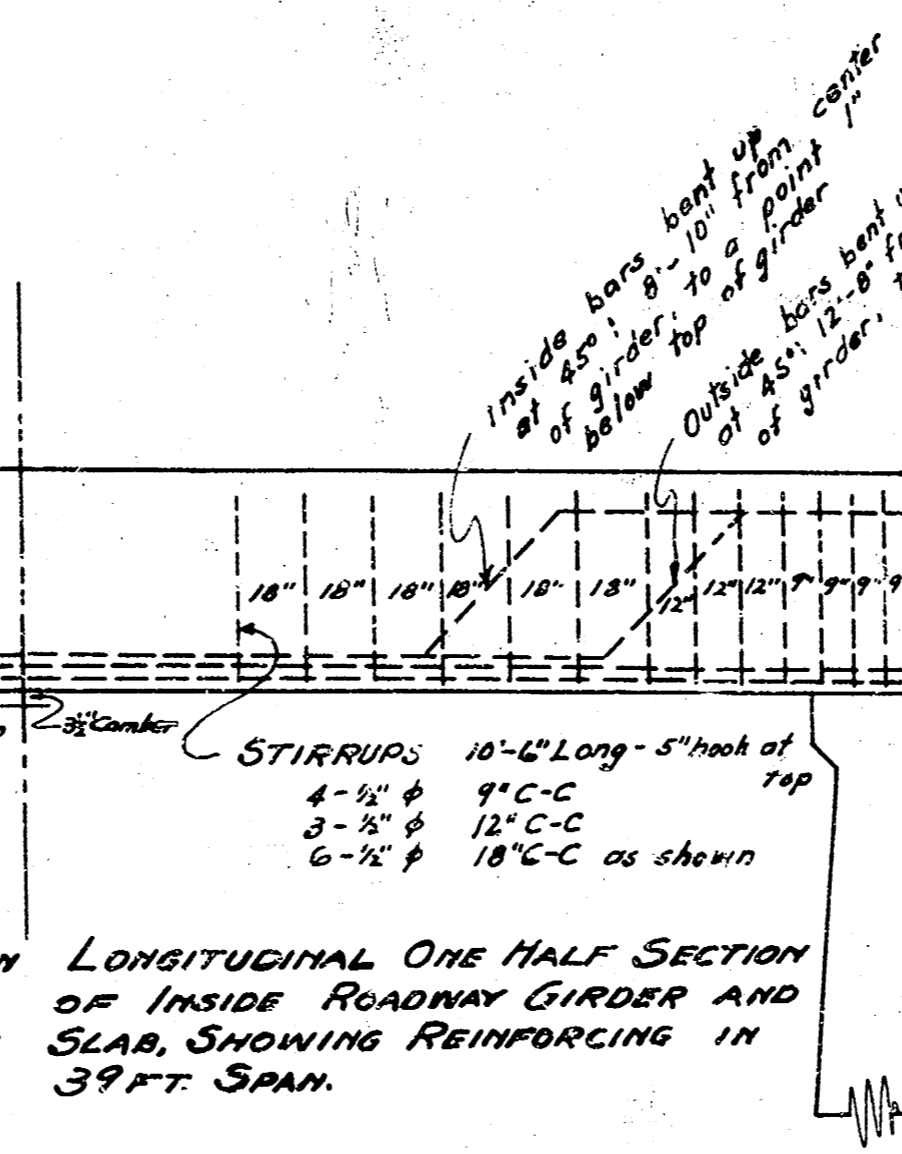
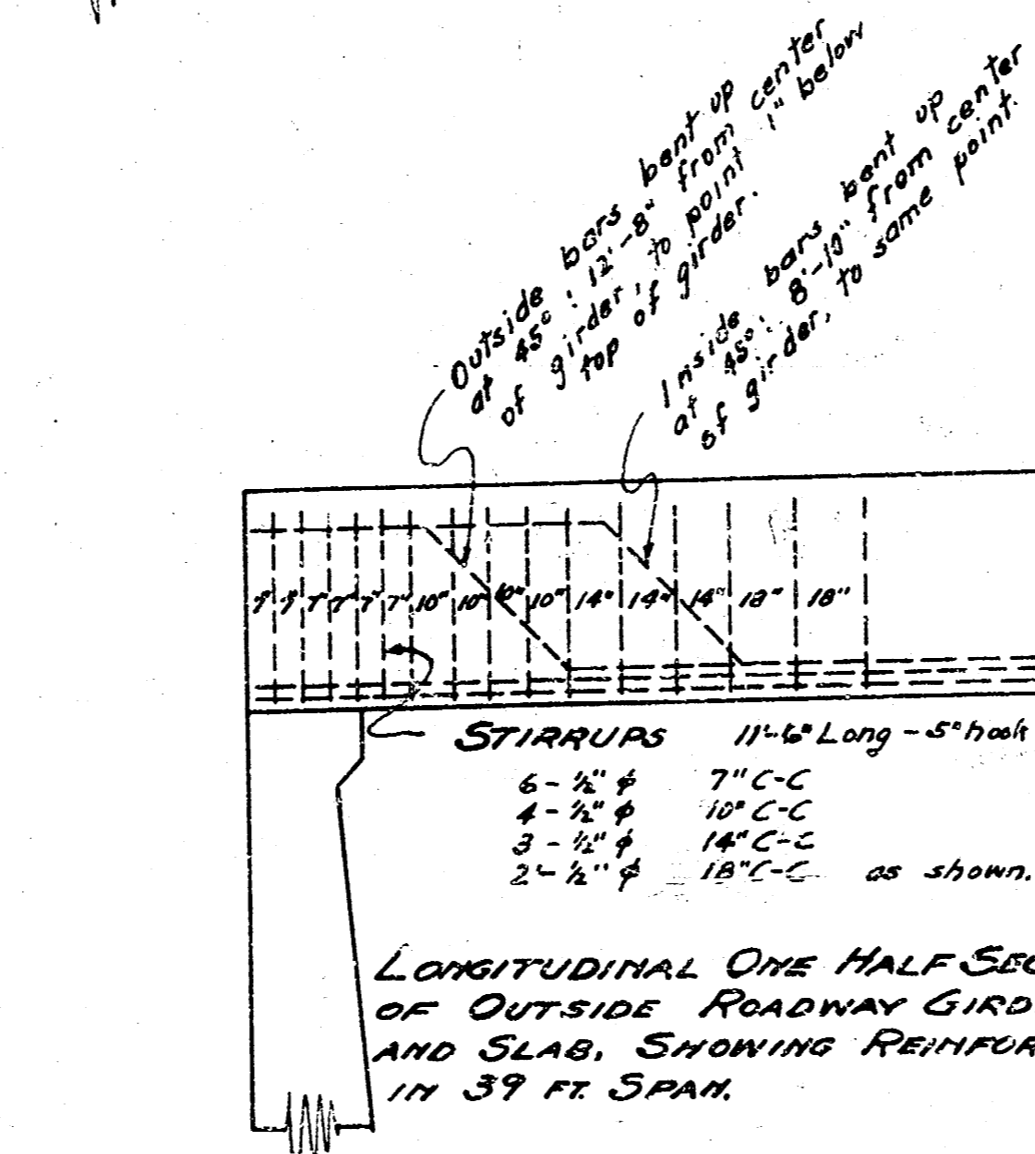
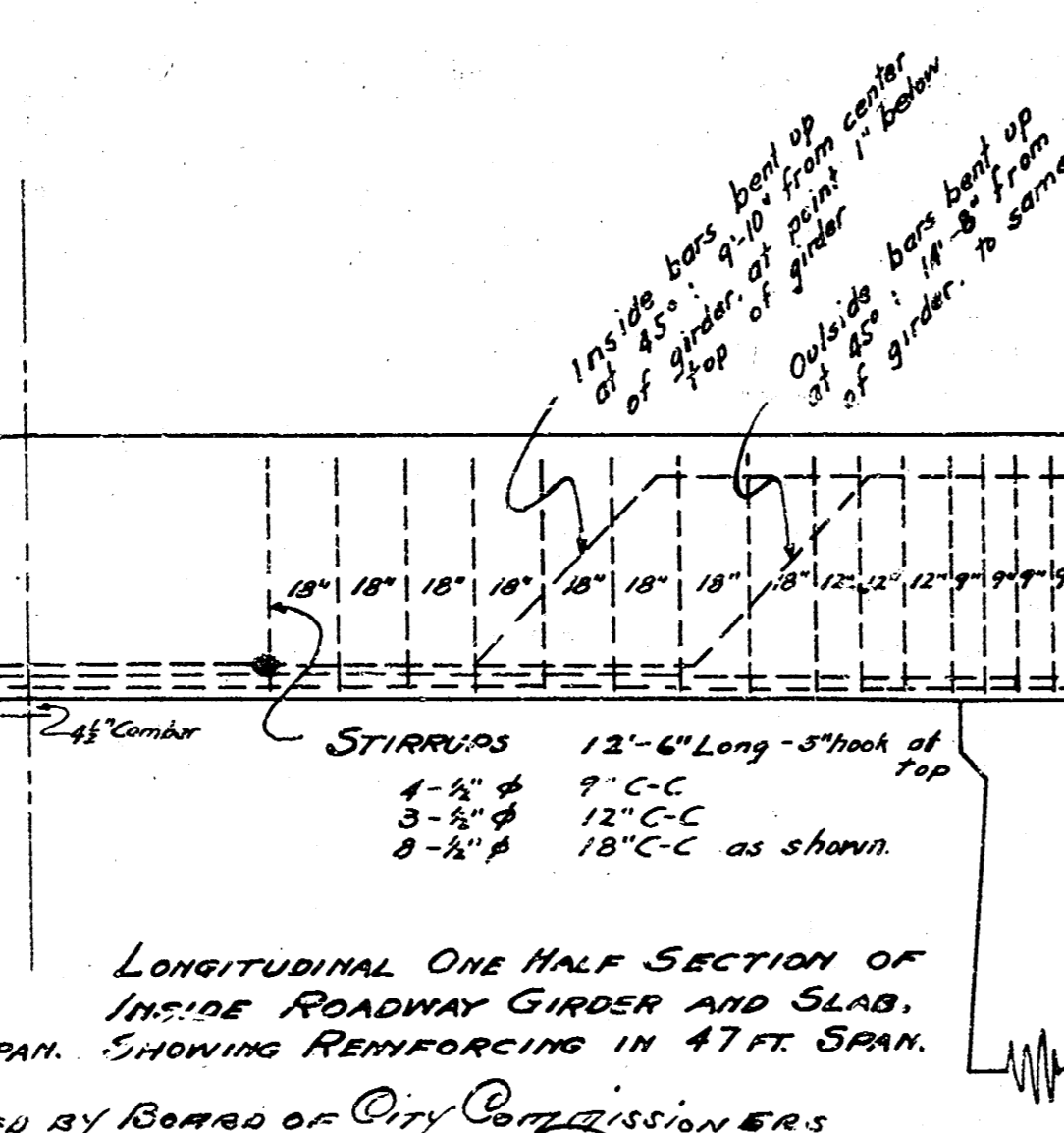
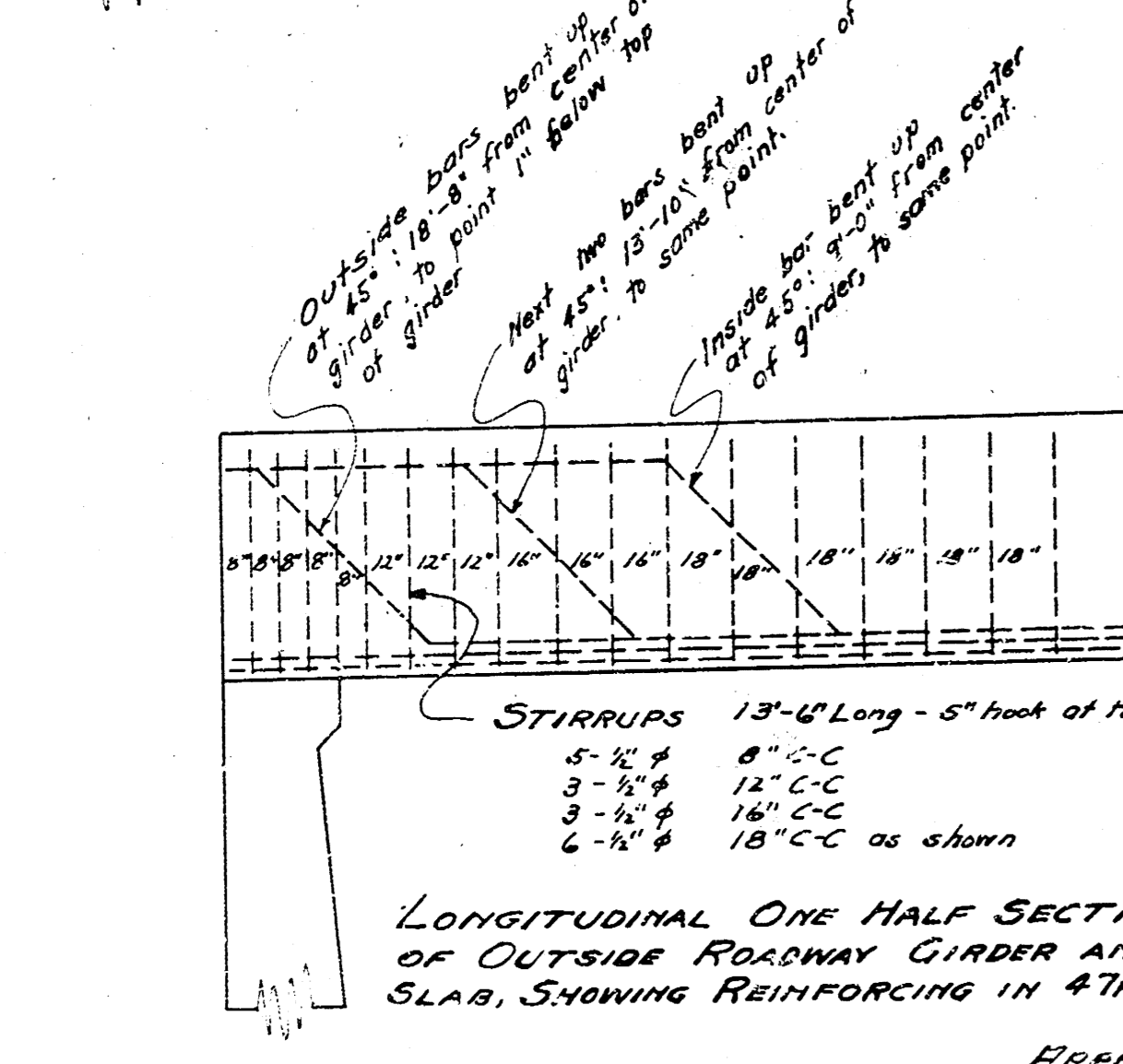
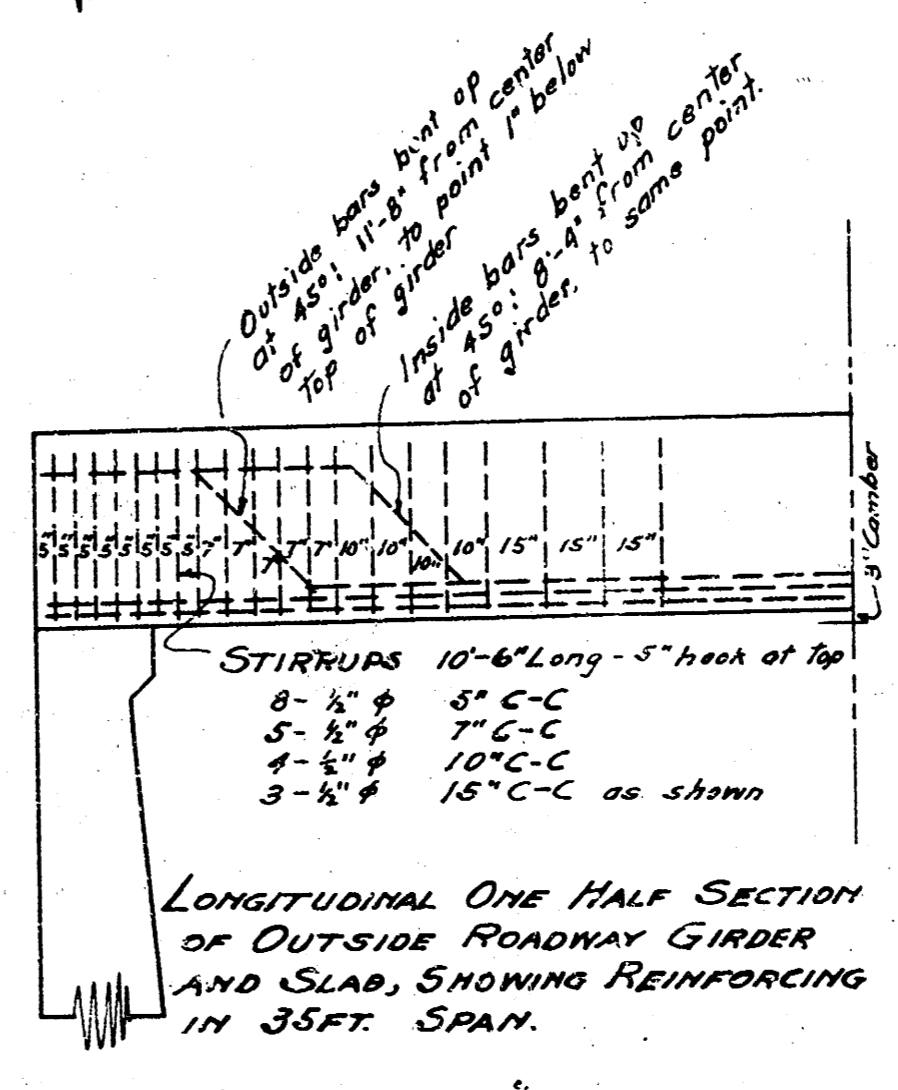
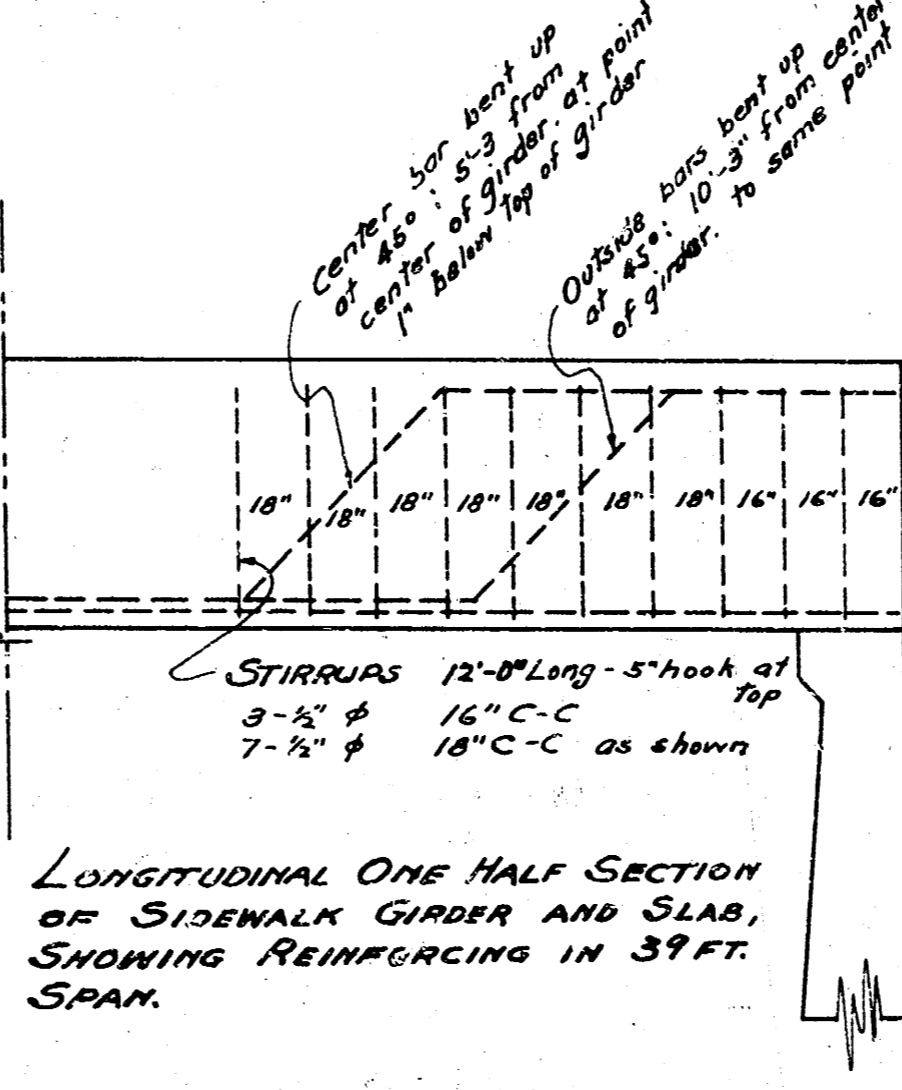
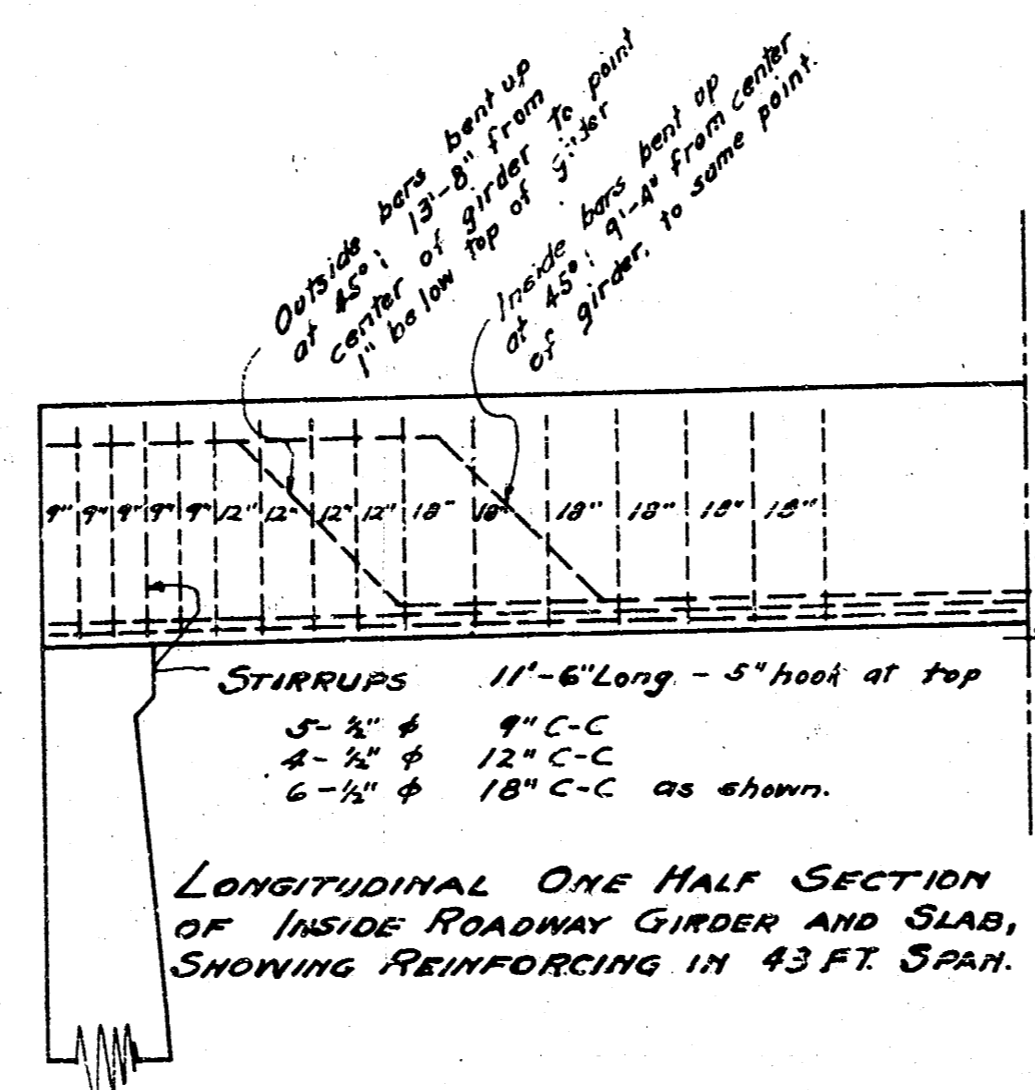
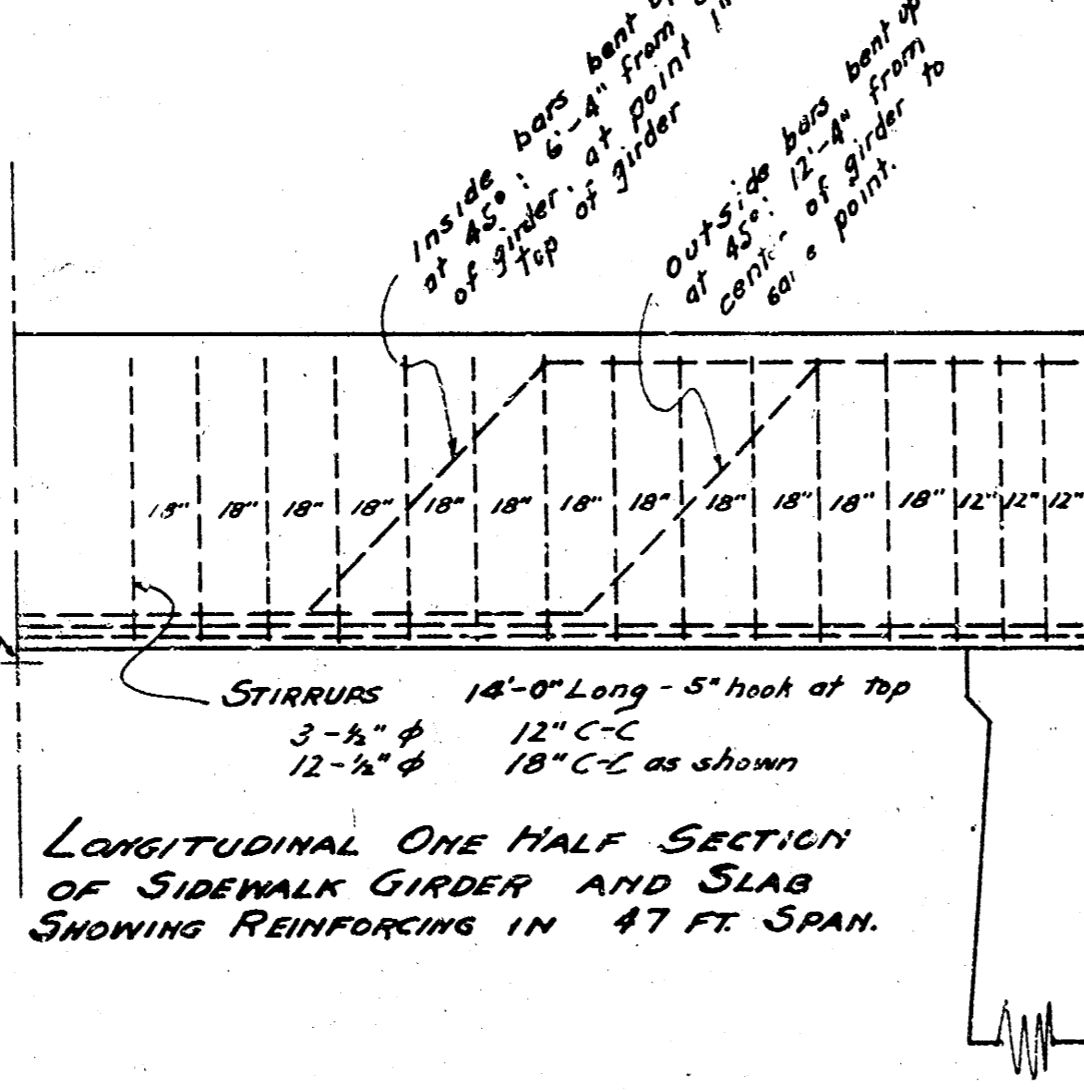
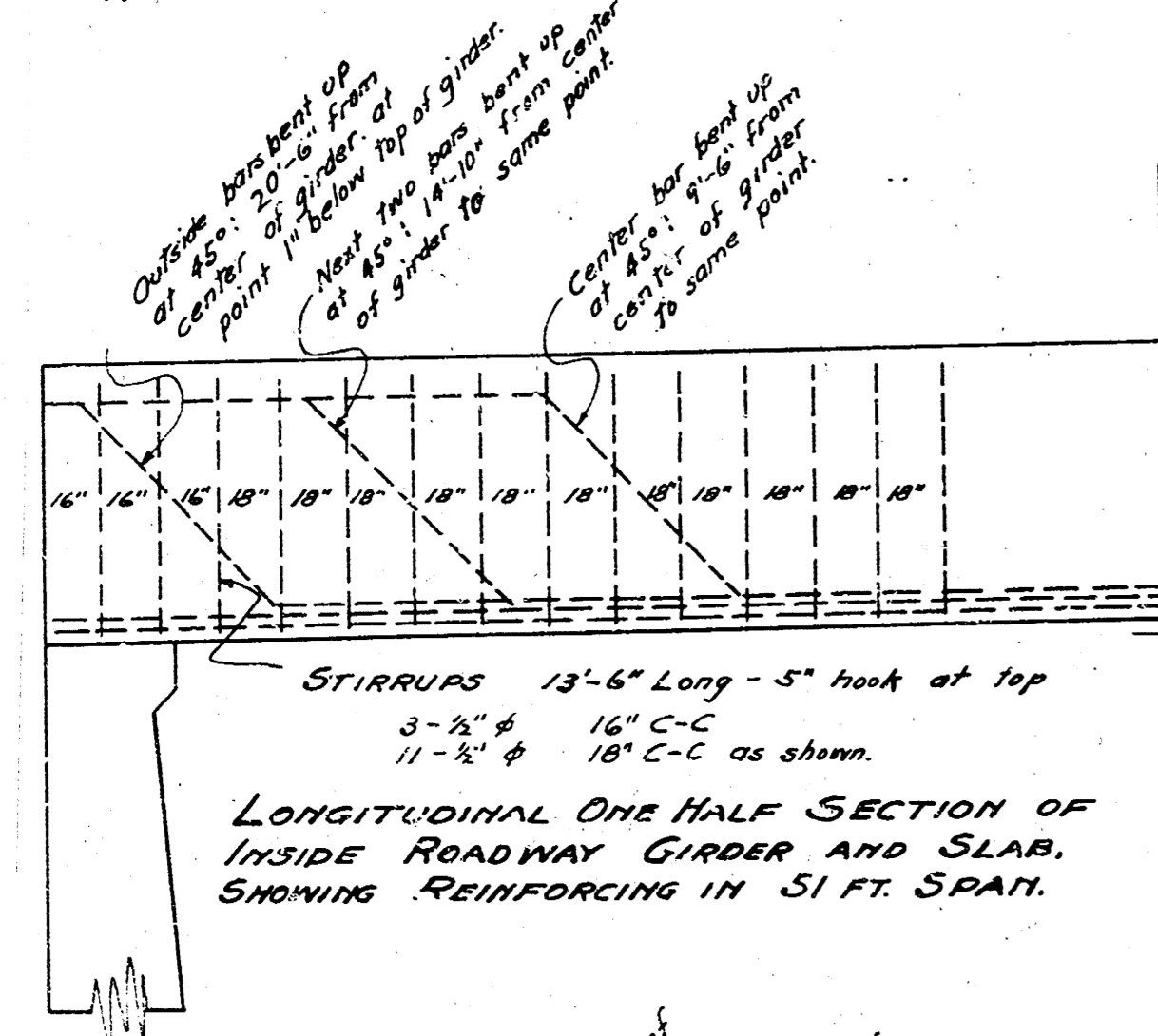
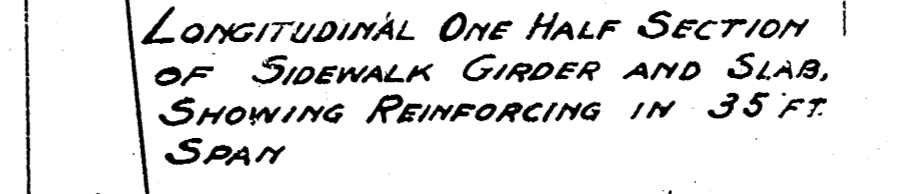
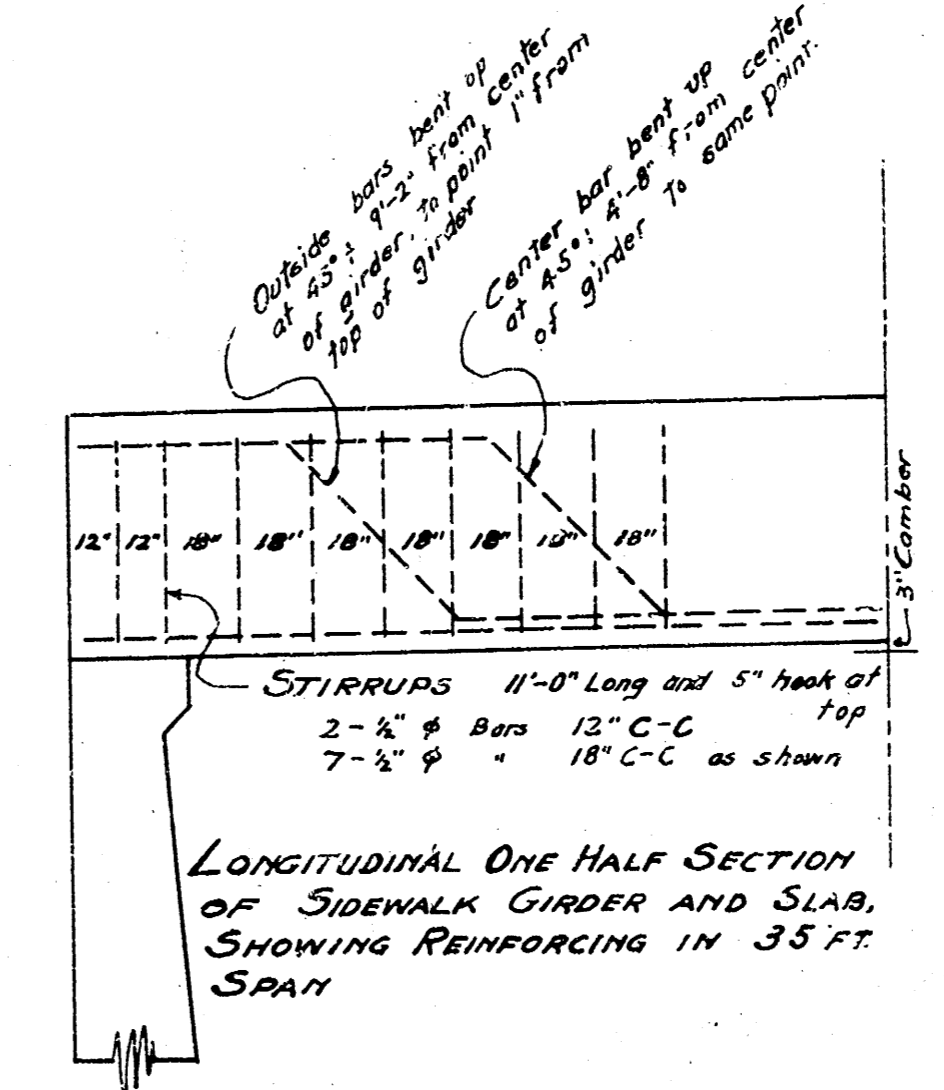
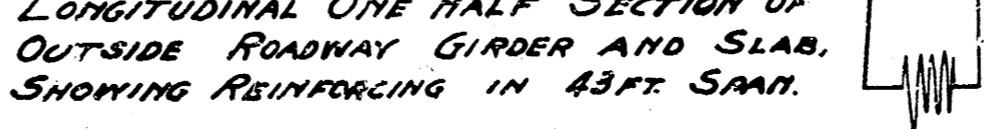
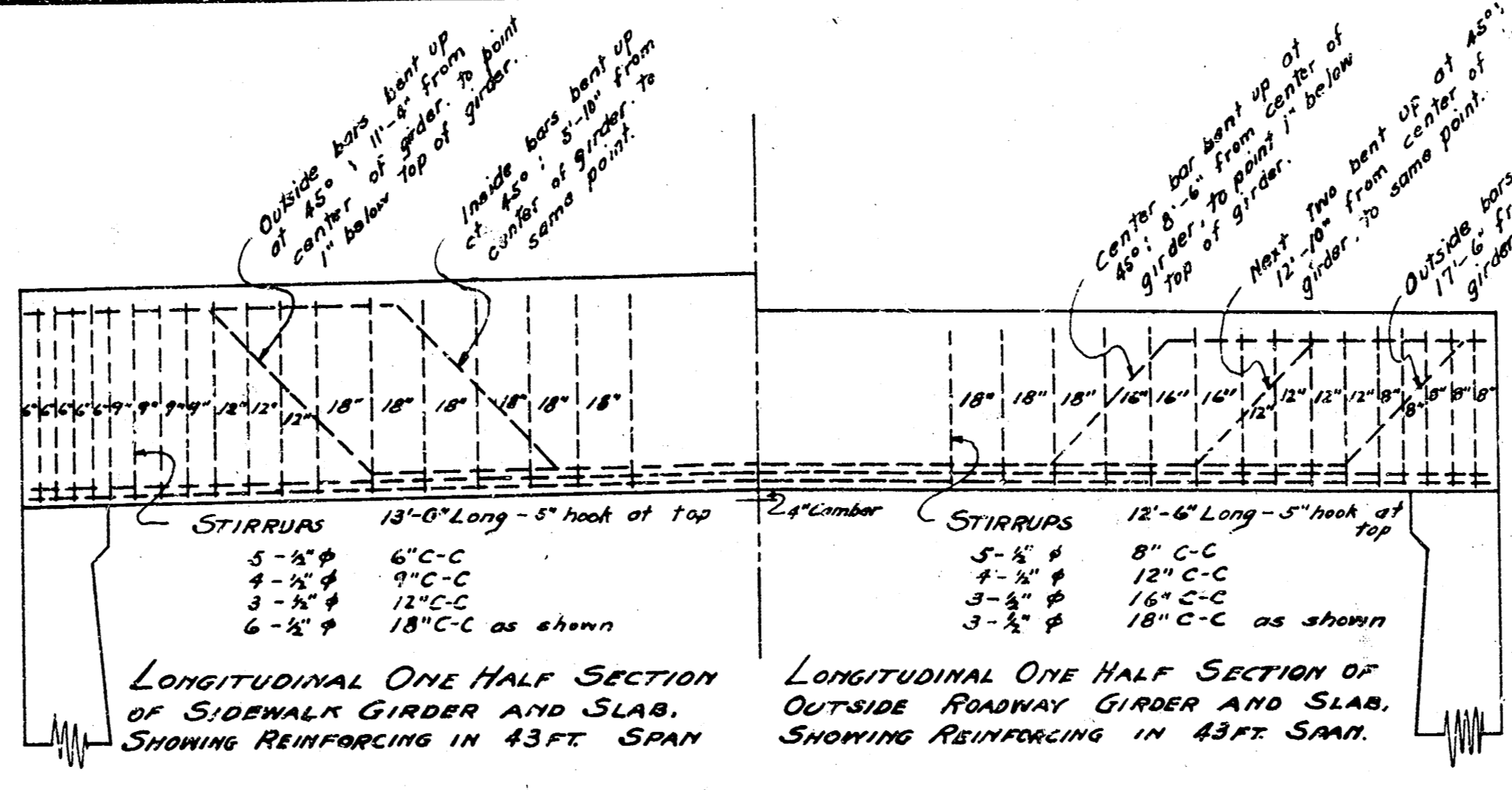
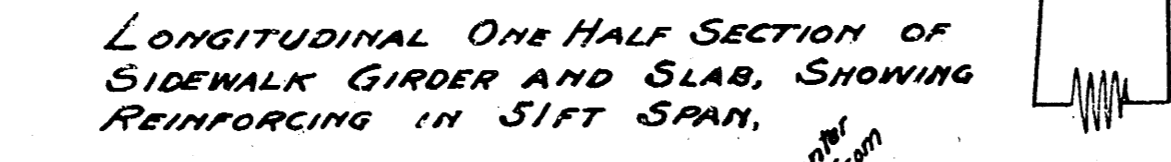
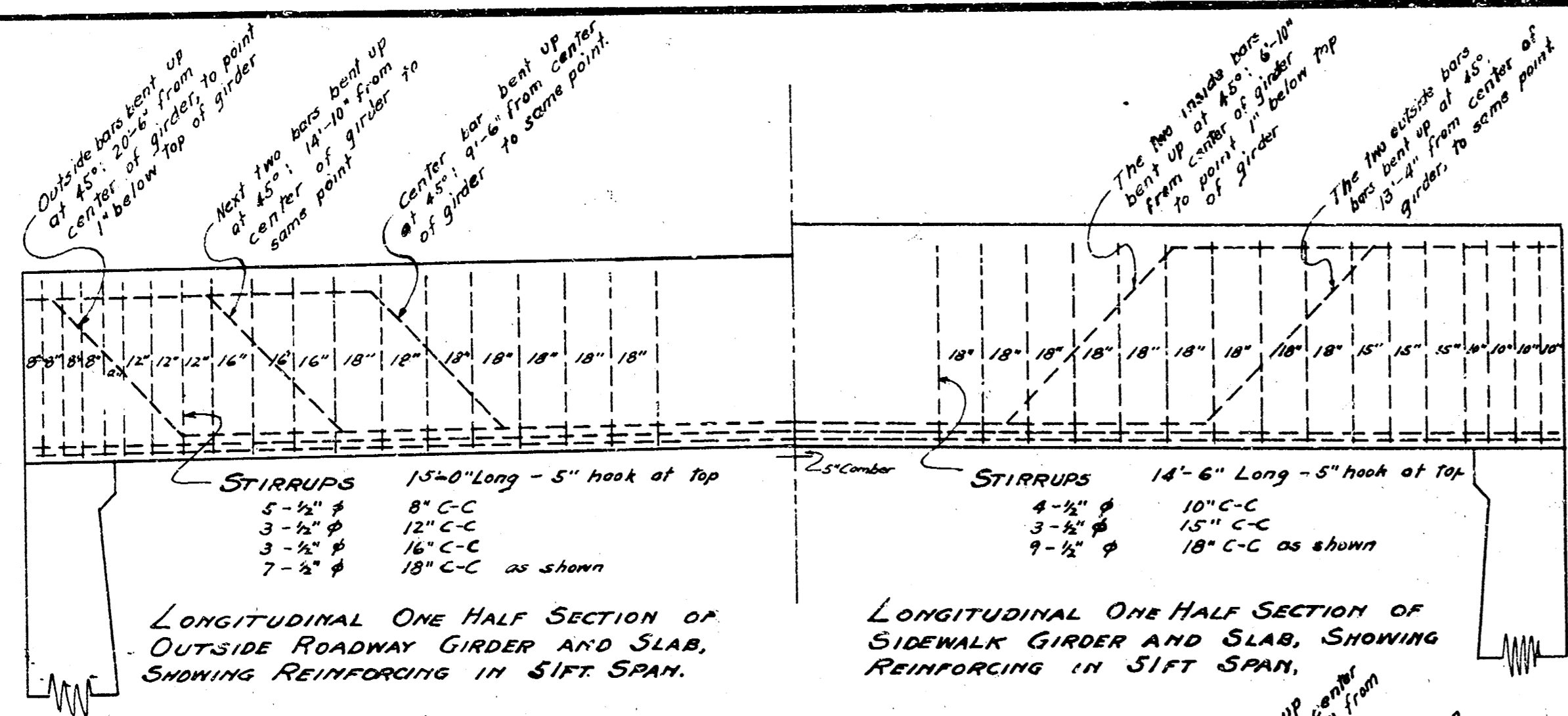


CROSS SECTION OF GIRDERS IN 35 FT. SPAN.
Scale: 1/2" = 1'-0"

APPROVED BY BOARD OF CITY COMMISSIONERS
SEPTEMBER 2ND 1924

Wormley City Clerk

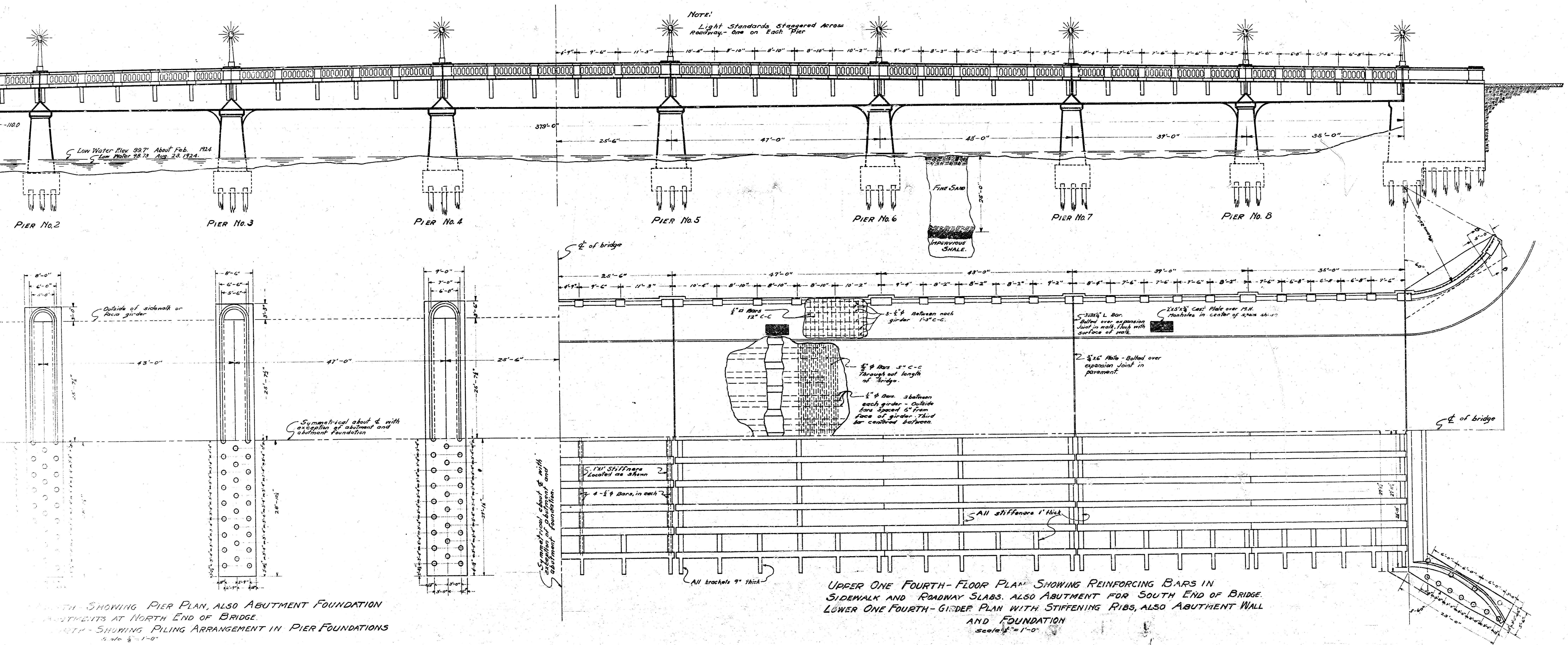
SENECA STREET BRIDGE
CROSS SECTIONS OF GIRDERS
WICHITA, KANSAS
DESIGNED BY
R.L. BROCKWAY & D.C. MOEHRING
DRAWN BY
H.R. MUSICK
AUG. 1924.
IN 5 SHEETS SHEET 3.



SENECA STREET BRIDGE.
LONGITUDINAL SECTION OF GIRDERS
WICHITA KANSAS
 DESIGNED BY
 P.L. BROCKWAY & D.C. MOEHRING
 DRAWN BY
 H.R. MUSICK
 AUG., 1924.
 IN 5 SHEETS SHEET 2.
 Scale: 1/2" = 1'-0"

APPROVED BY BOARD OF CITY COMMISSIONERS
 SEPTEMBER 2nd 1924.
 WALTER C. CLEAR

SENECA STREET BRIDGE



UPPER ONE FOURTH-FLOOR PLAN SHOWING REINFORCING BARS IN SIDEWALK AND ROADWAY SLABS. ALSO ABUTMENT FOR SOUTH END OF BRIDGE.
LOWER ONE FOURTH-GIRDER PLAN WITH STIFFENING RIBS, ALSO ABUTMENT WALL AND FOUNDATION

UPPER ONE FOURTH-FLOOR PLAN SHOWING REINFORCING BARS IN SIDEWALK AND ROADWAY SLABS. ALSO ABUTMENT FOR SOUTH END OF BRIDGE.
LOWER ONE FOURTH-GIRDER PLAN WITH STIFFENING RIBS, ALSO ABUTMENT WALL AND FOUNDATION