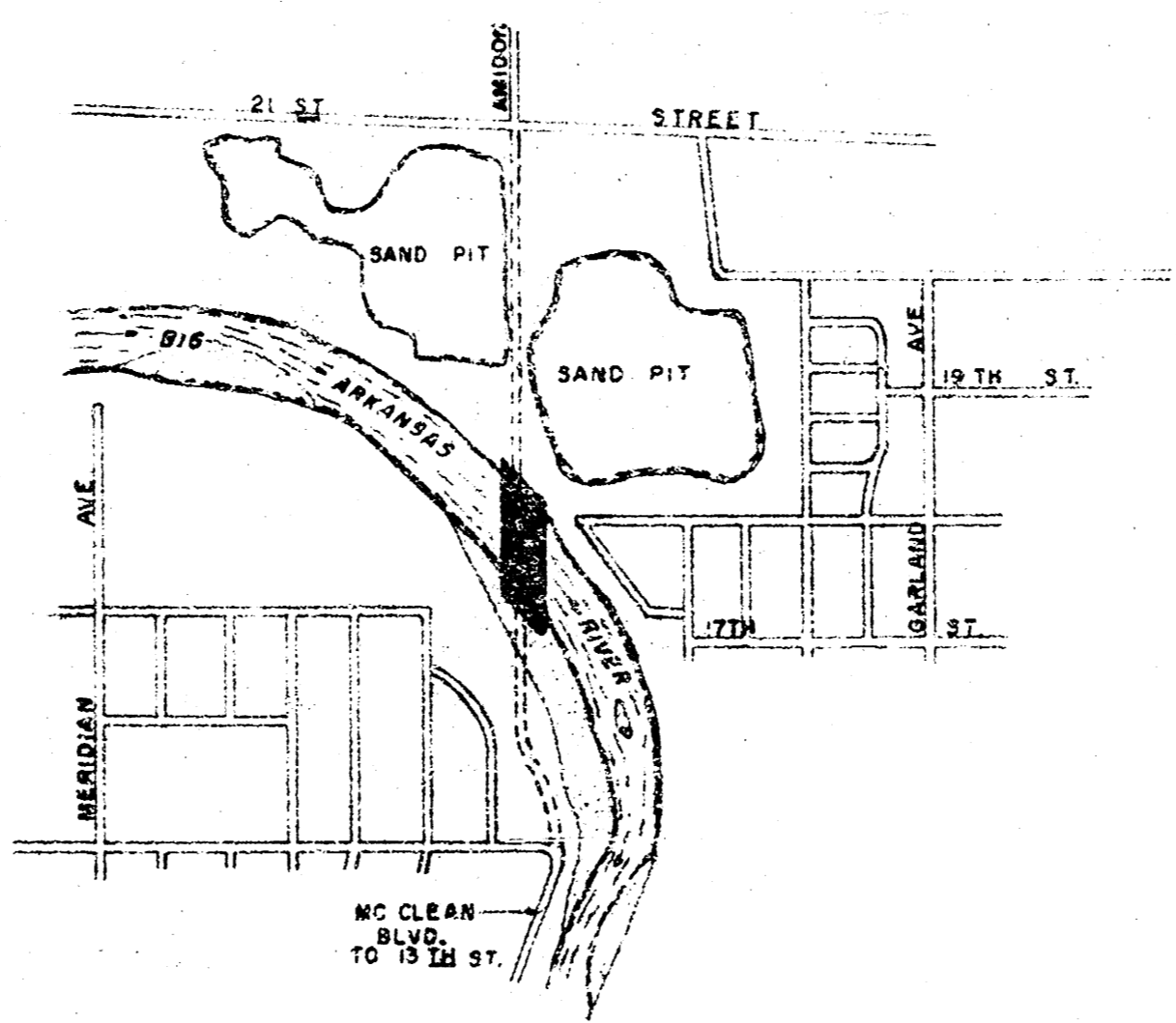
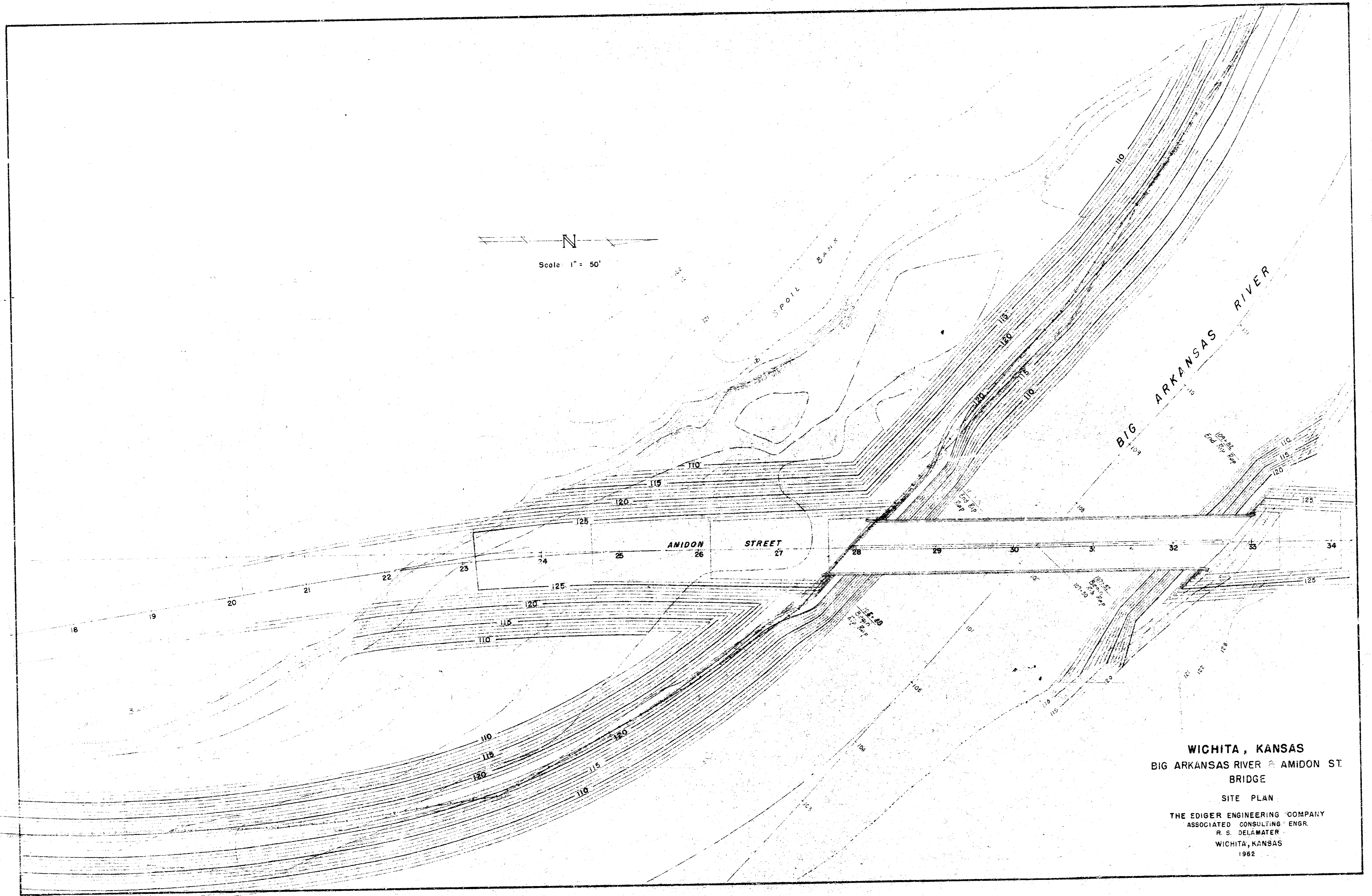


CITY OF
WICHITA , KANSAS
SEDGWICK COUNTY
PLANS FOR
BIG ARKANSAS RIVER & AMIDON ST.
BRIDGE

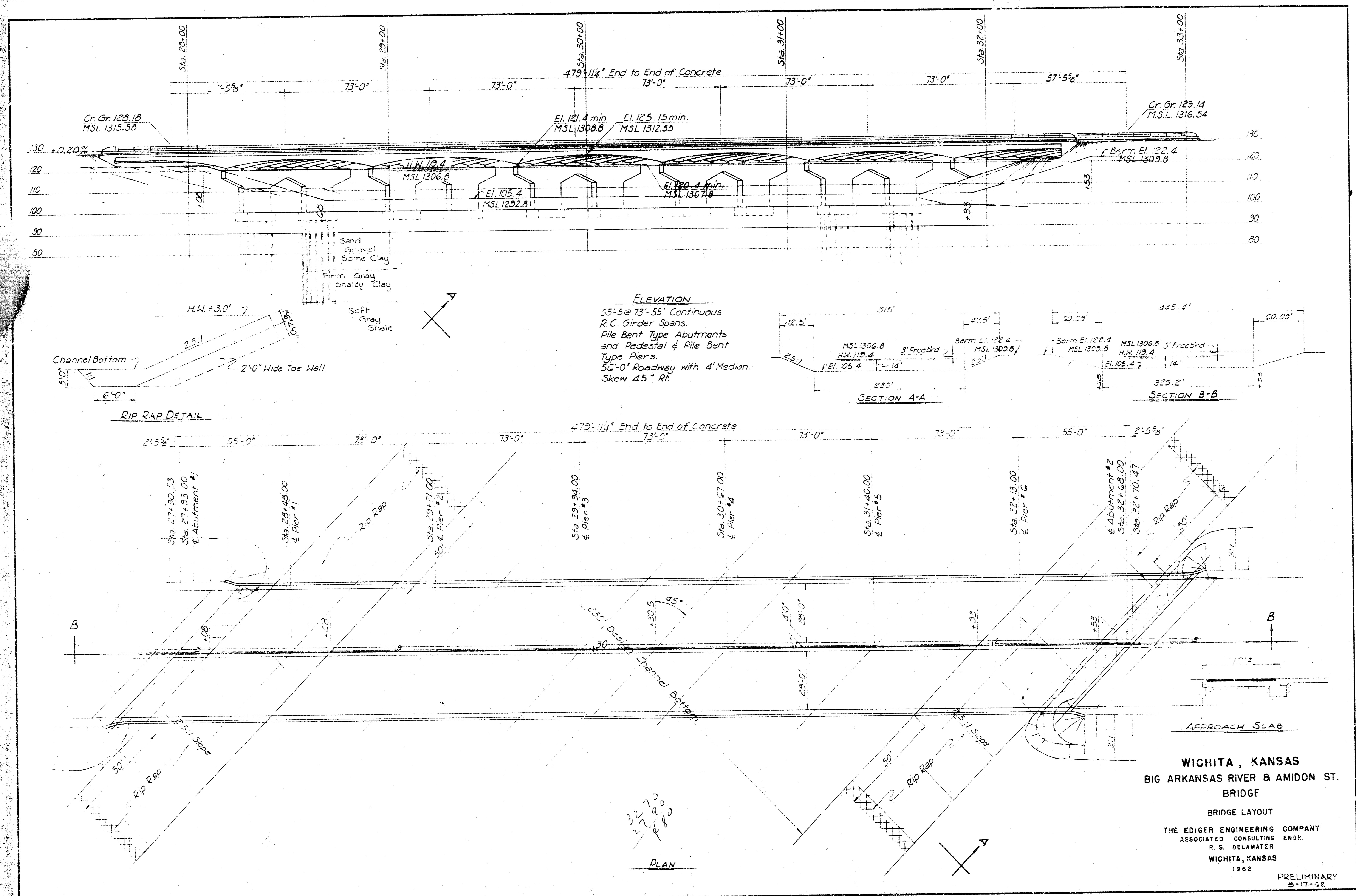


THE EDIGER ENGINEERING COMPANY
ASSOCIATE CONSULTING ENGINEER
R. S. DELAMATER
WICHITA , KANSAS
1962

PRELIMINARY
FIELD CHECK
DATE: _____
APPROVED BY: _____

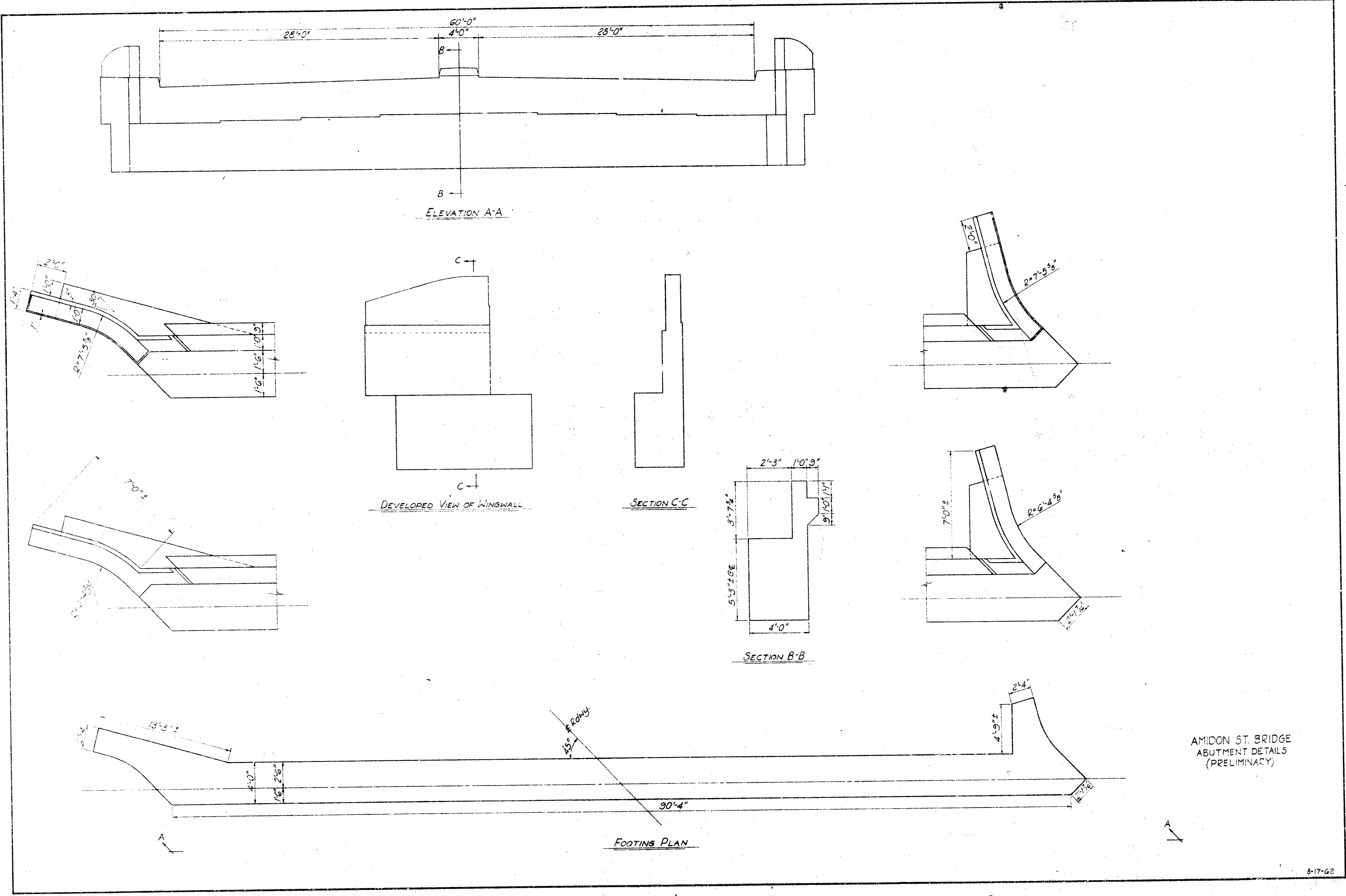


WICHITA, KANSAS
BIG ARKANSAS RIVER & ANIDON ST.
BRIDGE
 SITE PLAN
 THE EDIGER ENGINEERING COMPANY
 ASSOCIATED CONSULTING ENGR.
 R. S. DELAMATER
 WICHITA, KANSAS
 1962

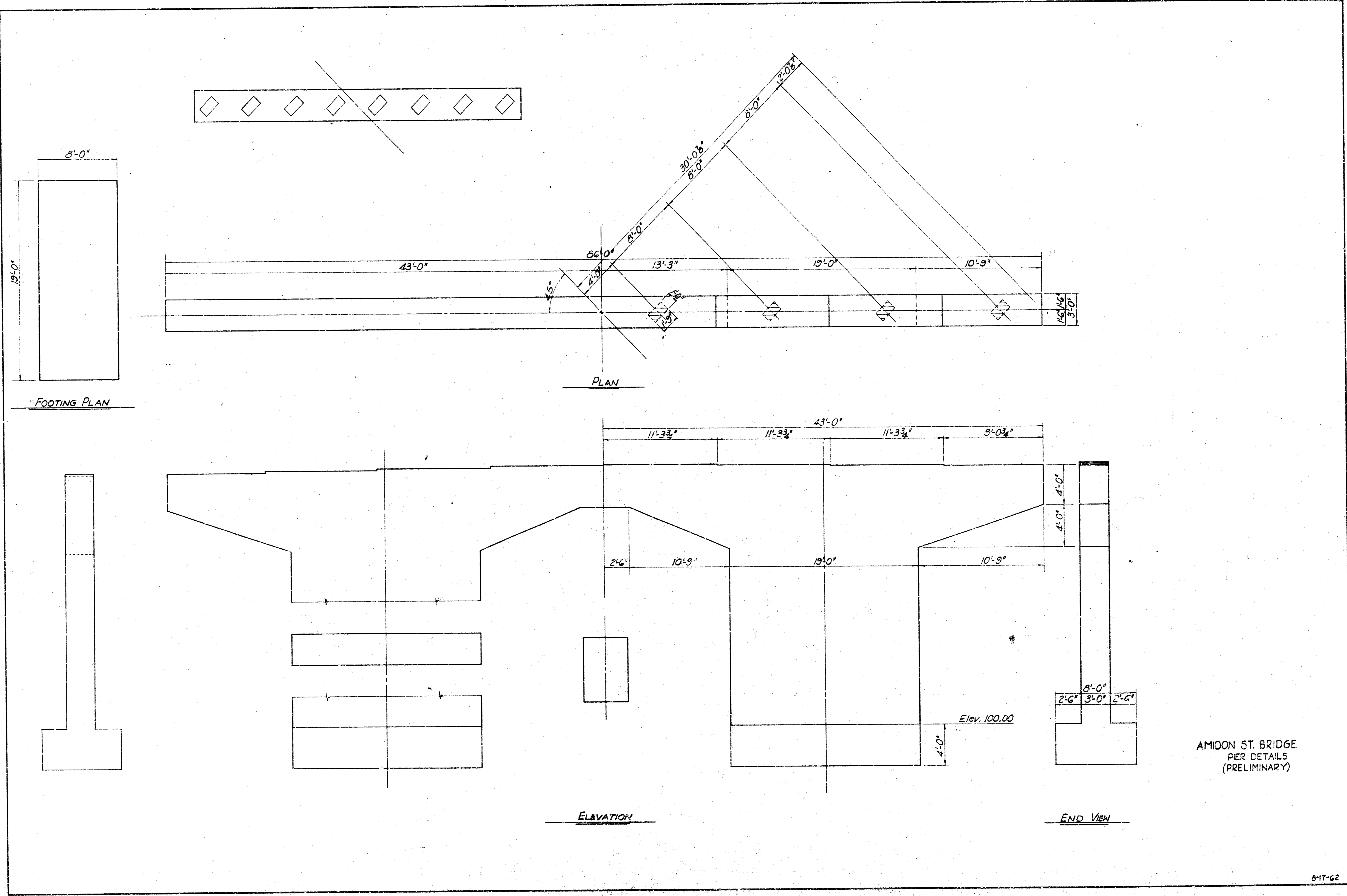


ELEVATION
 55'-5" @ 73'-55" Continuous
 R.C. Girder Spans.
 Pile Bent Type Abutments
 and Pedestal & Pile Bent
 Type Piers.
 56'-0" Roadway with 4' Median.
 Skew 45° Rf.

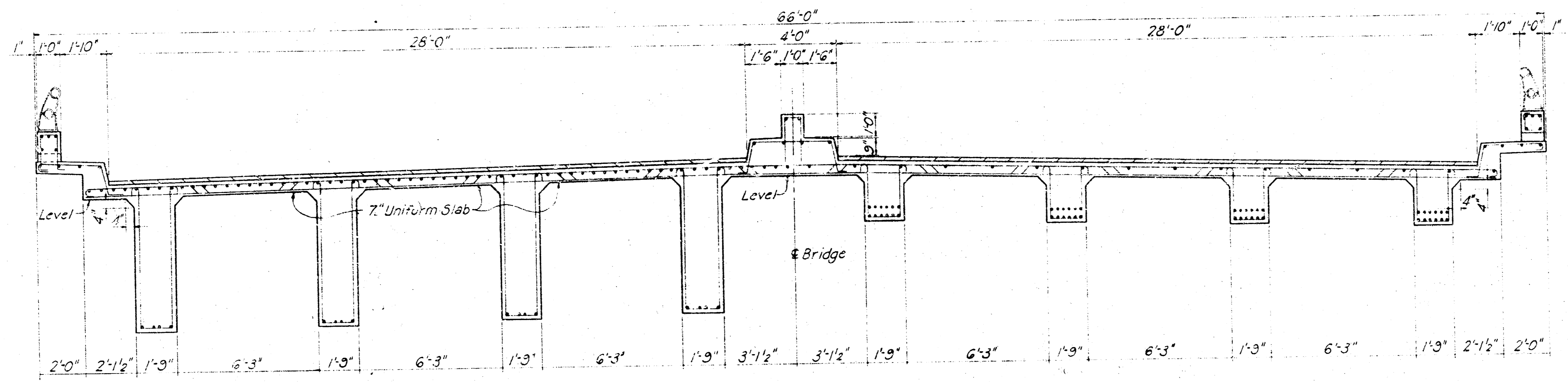
WICHITA, KANSAS
BIG ARKANSAS RIVER & AMIDON ST.
BRIDGE
 BRIDGE LAYOUT
 THE EDIGER ENGINEERING COMPANY
 ASSOCIATED CONSULTING ENGR.
 R. S. DELAMATER
 WICHITA, KANSAS
 1962
 PRELIMINARY
 5-17-62



AMIDON ST. BRIDGE
 ABUTMENT DETAILS
 (PRELIMINARY)

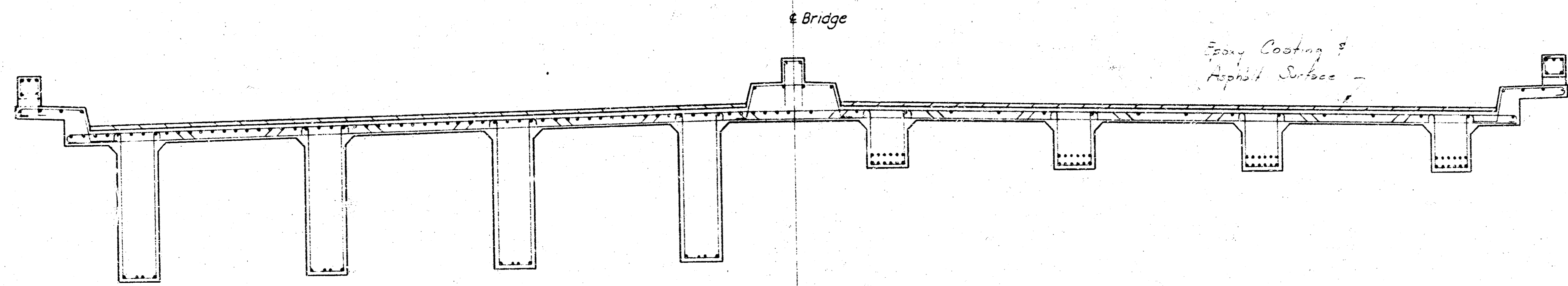


AMIDON ST. BRIDGE
 PER DETAILS
 (PRELIMINARY)



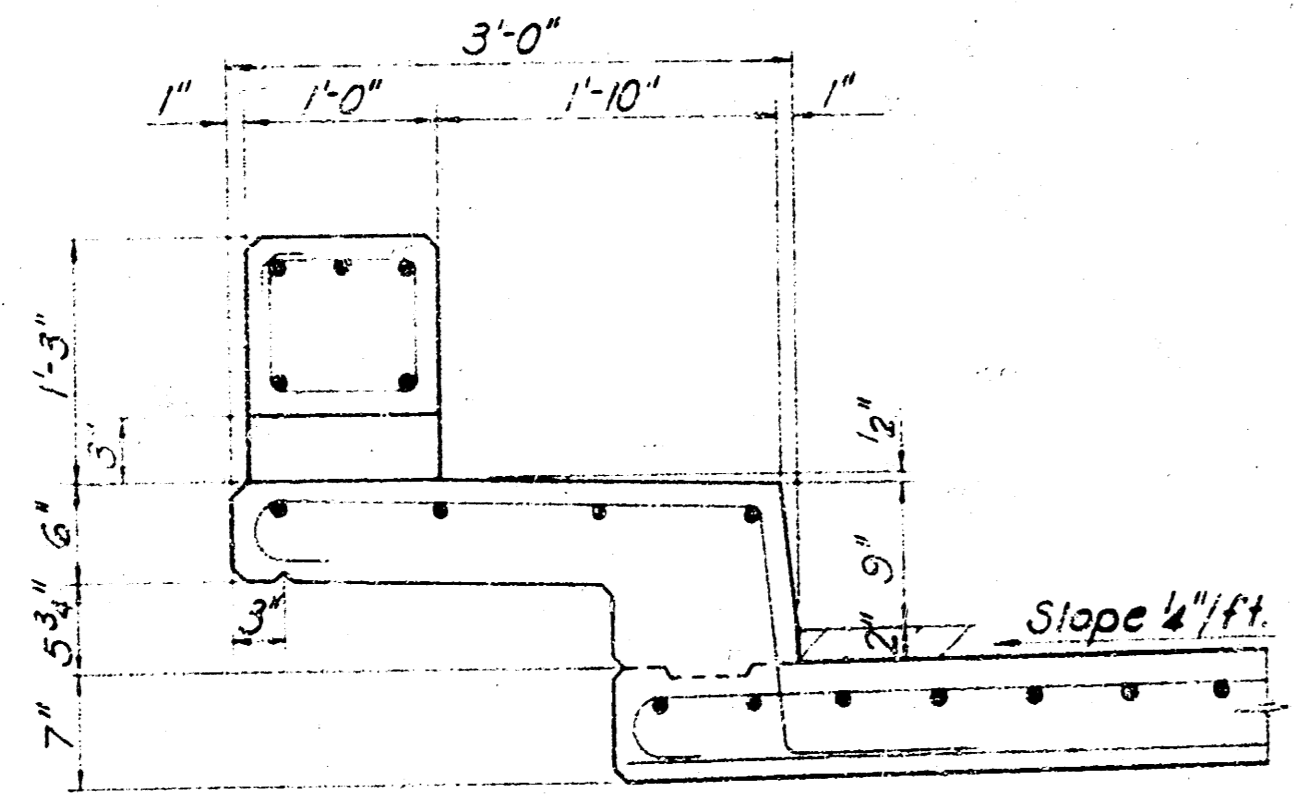
HALF SECTION AT PIER

HALF SECTION AT MID-SPAN

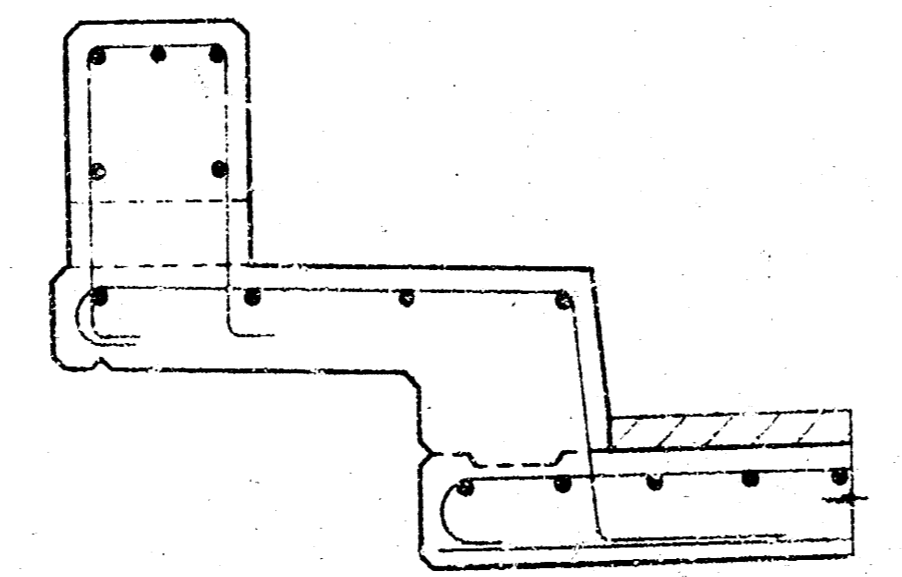


HALF SECTION AT PIER SHOWING REINFORCING STEEL

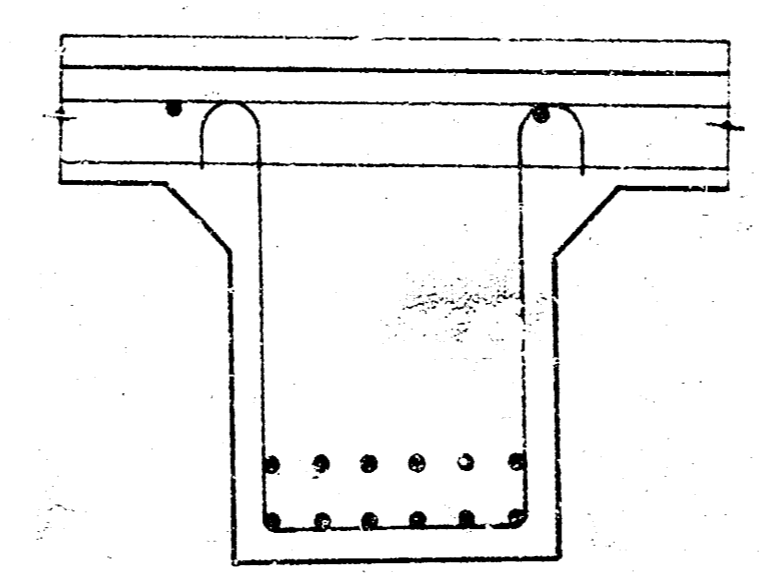
HALF SECTION AT MID-SPAN SHOWING REINFORCING STEEL



SECTION AT DRAIN



SECTION AT POST



GIRDER DETAIL AT MID-SPAN

SIDEWALK AND CURB DETAILS

AMIDON ST. BRIDGE
DECK SECTION
(PRELIMINARY)