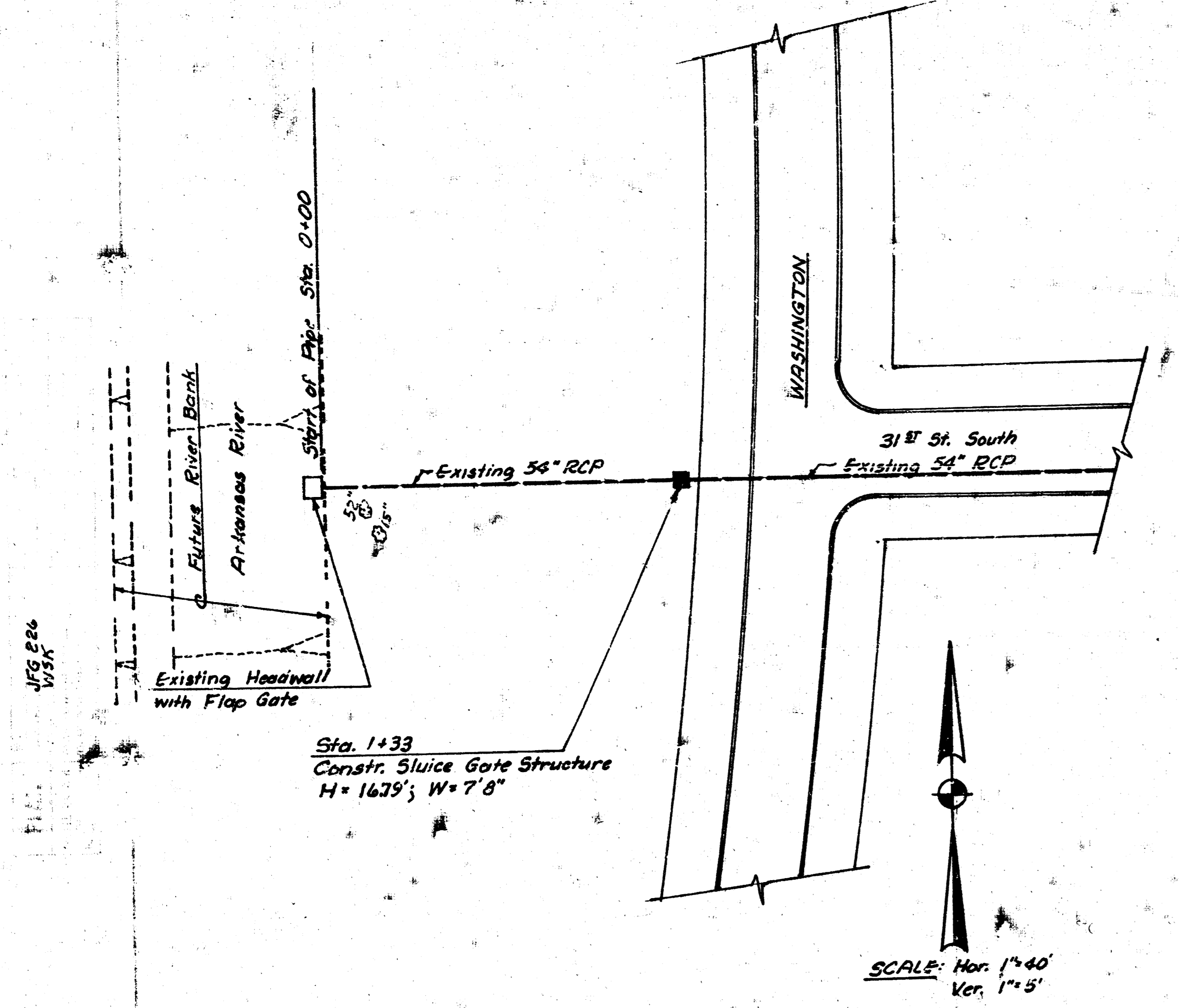


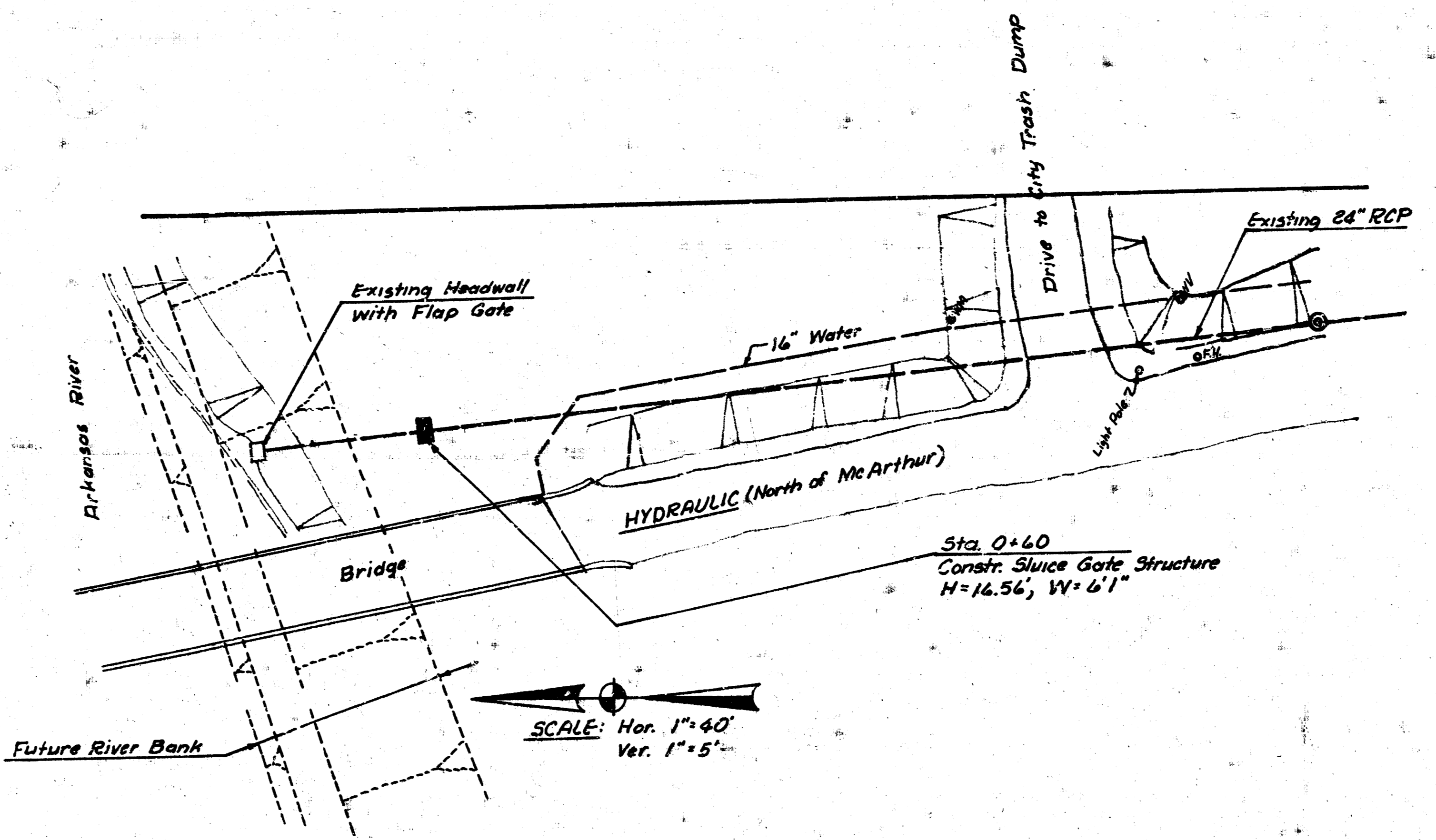


BM 86.27 City Std @ Hydraulic f MacArthur

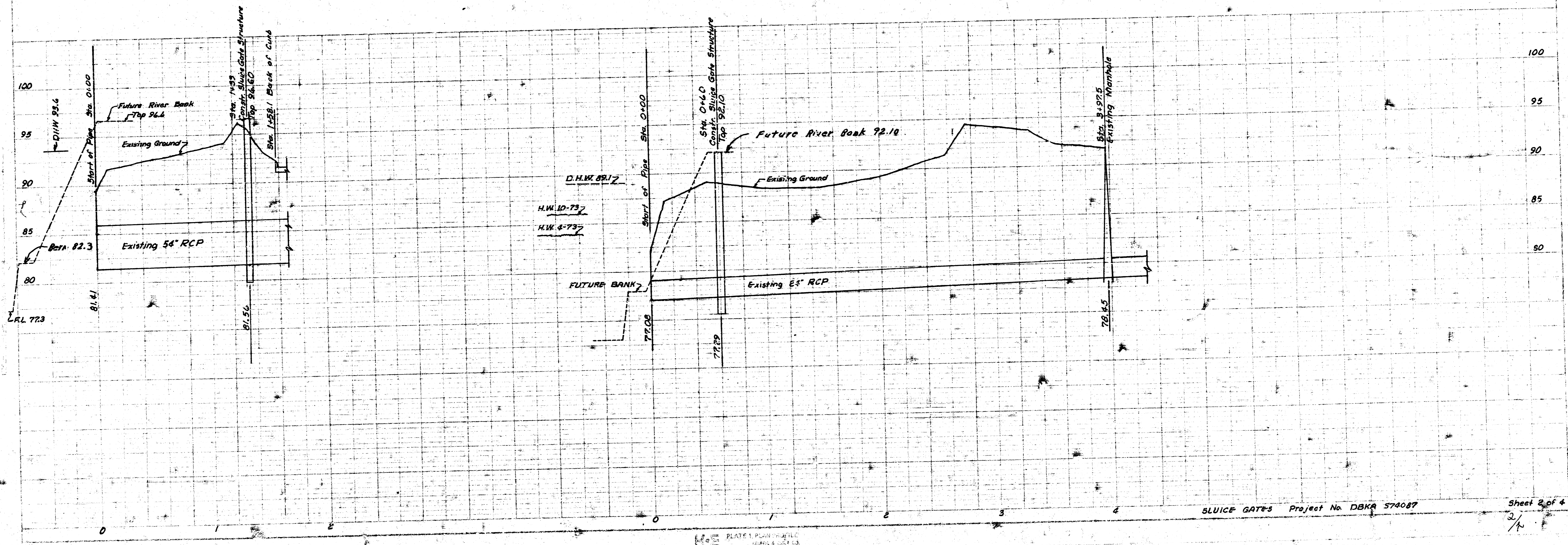
BM 96.94 SE Cor. Conc. Par. Ho.  
@ 1108 E. 31st St. South



SCALE: Hor. 1"=40'  
Ver. 1"=5'



SCALE: Hor. 1"=40'  
Ver. 1"=5'



SLUICE GATE-5 Project No. DBKA 574087

Sheet 2 of 4  
2/1

FILMED FROM THE BEST AVAILABLE COPY.....

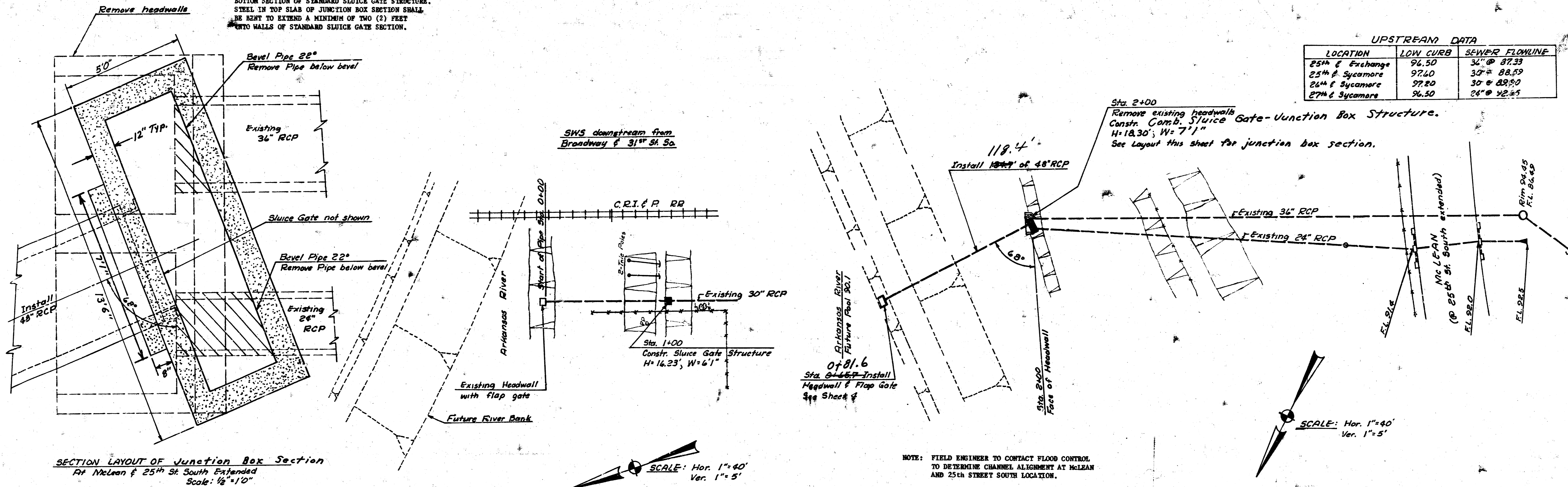
B.M. 96.72 SF Cor. Headwall to pipe, S Side Dike, 100' West of RR R/W.

B.M. 93.03 "x" out on S.W. cor. Headwall SWS outfall W. Bank River, E. S. McLean @ 25th St.

NOTE: REINFORCING STEEL IN JUNCTION BOX SECTION TO CONFORM WITH STEEL PATTERN AND SPACING IN BOTTOM SECTION OF STANDARD SLUICE GATE STRUCTURE. STEEL IN TOP SLAB OF JUNCTION BOX SECTION SHALL BE BENT TO EXTEND A MINIMUM OF TWO (2) FEET INTO WALLS OF STANDARD SLUICE GATE SECTION.

UPSTREAM DATA

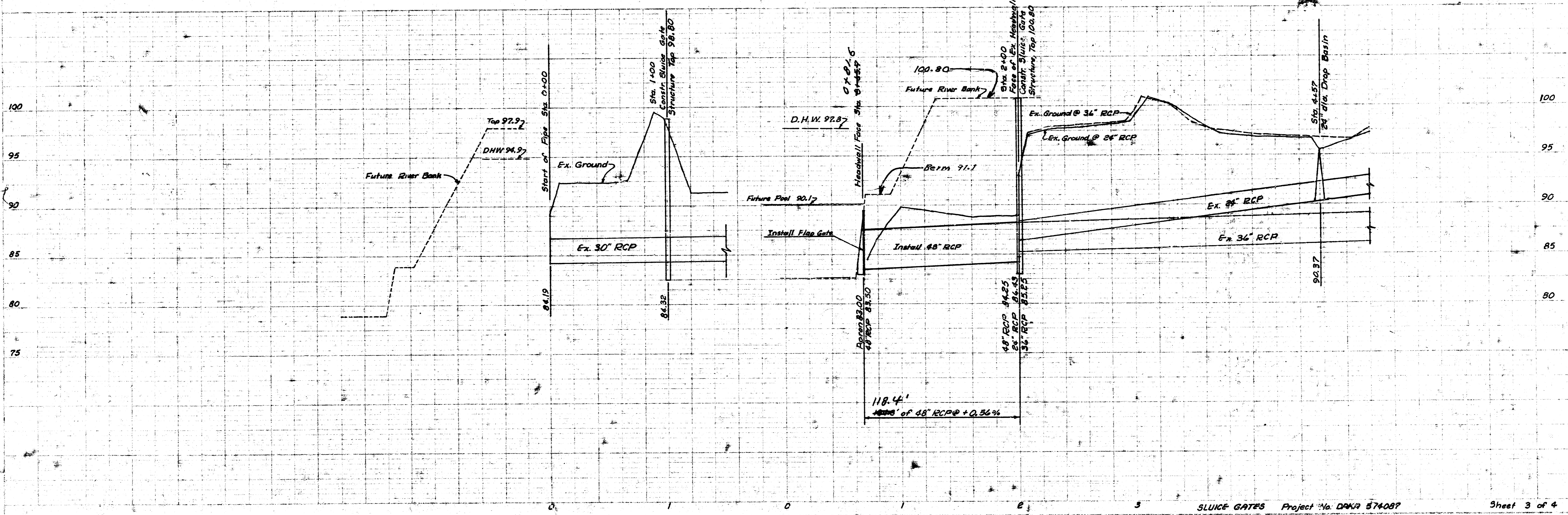
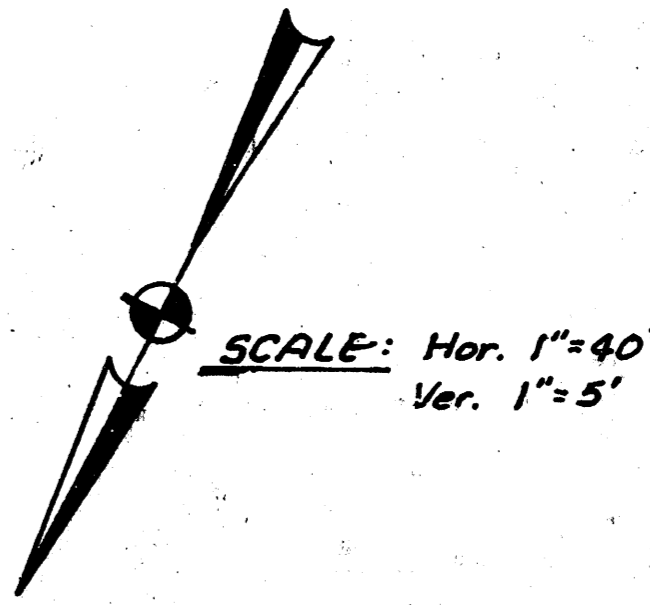
LOCATION	LOW CURB	SEWER FLOWLINE
25th & Exchange	96.50	34" @ 87.33
25th & Sycamore	97.10	30" @ 88.59
26th & Sycamore	97.20	30" @ 89.00
27th & Sycamore	96.50	24" @ 92.25

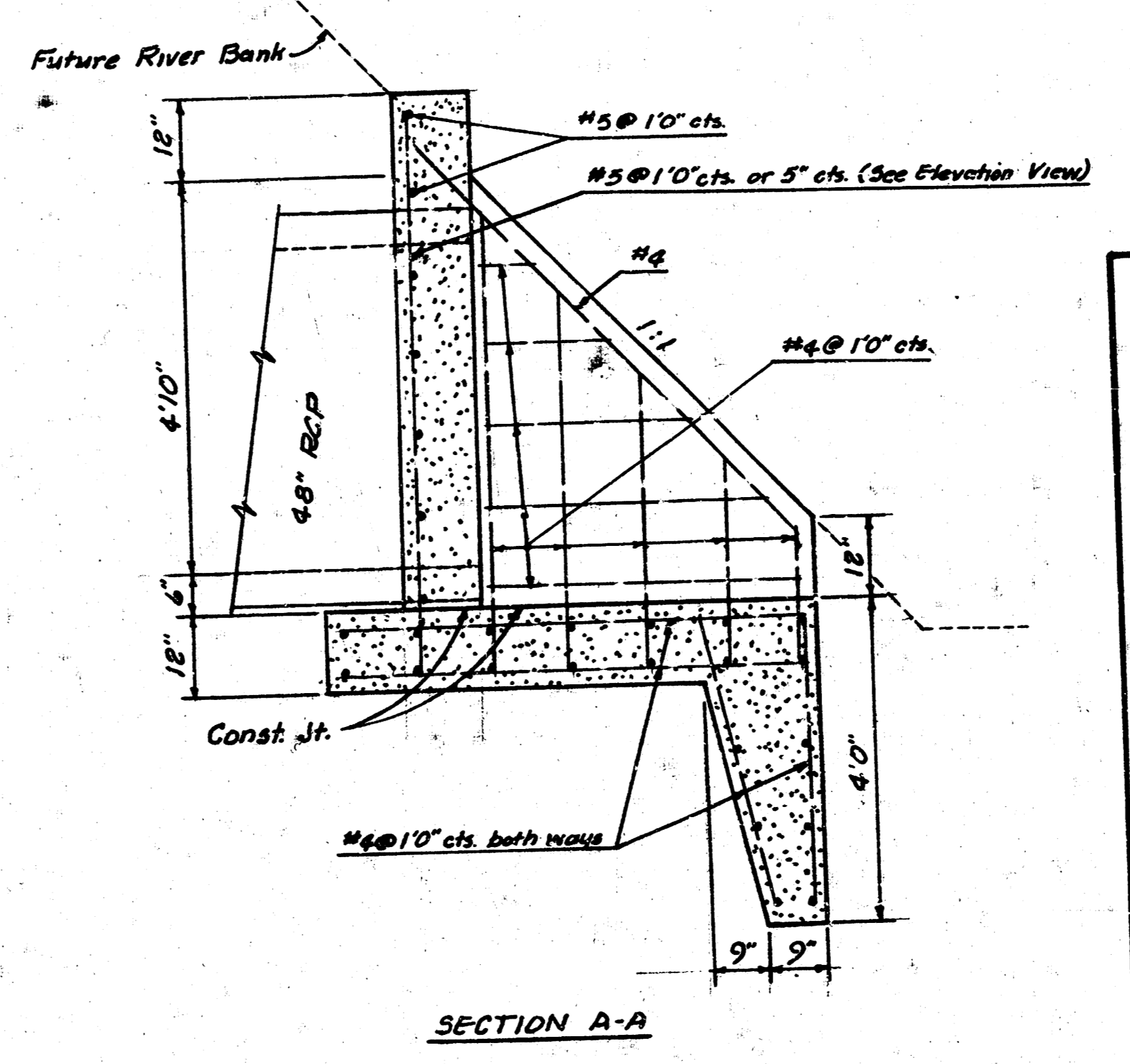
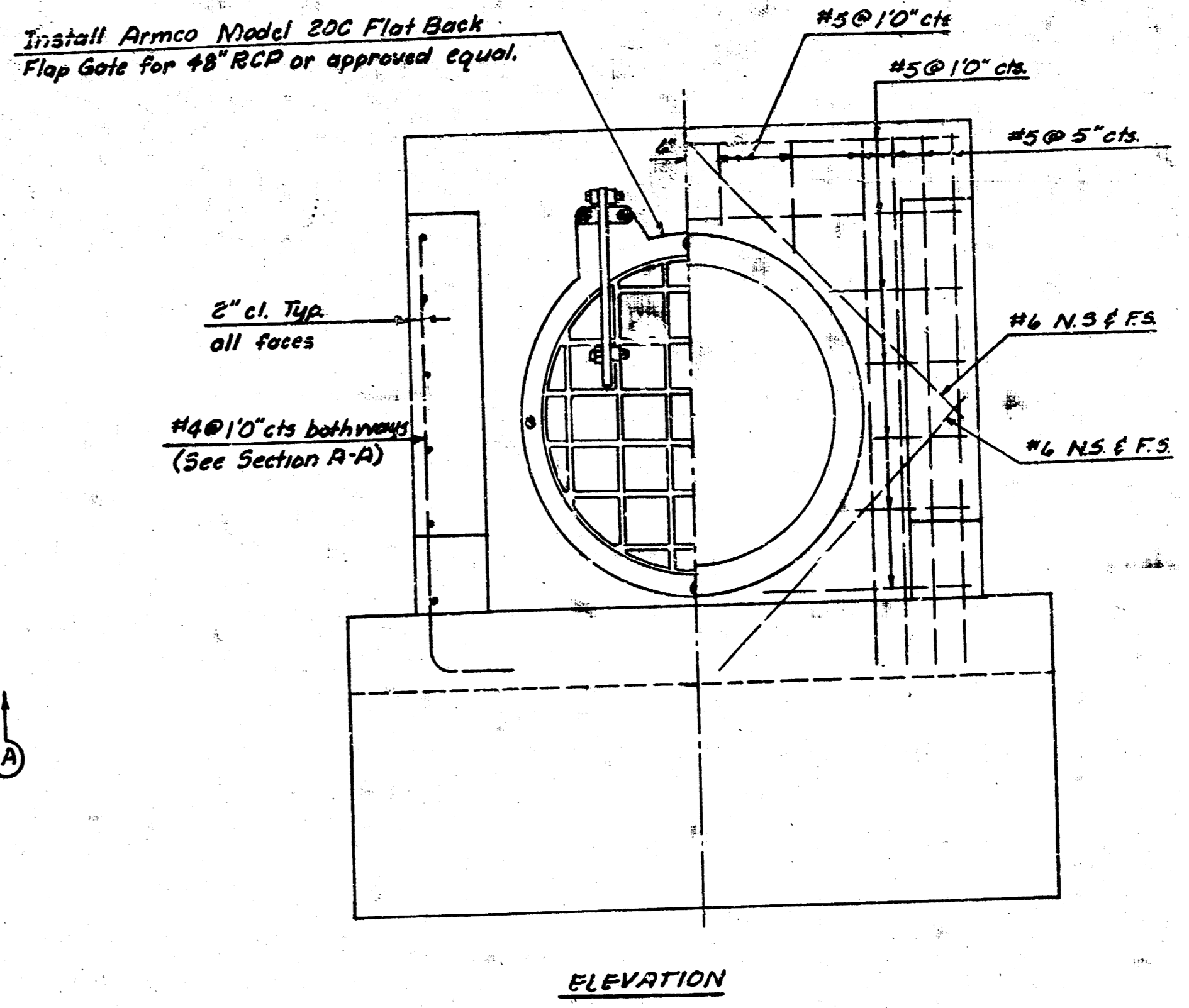
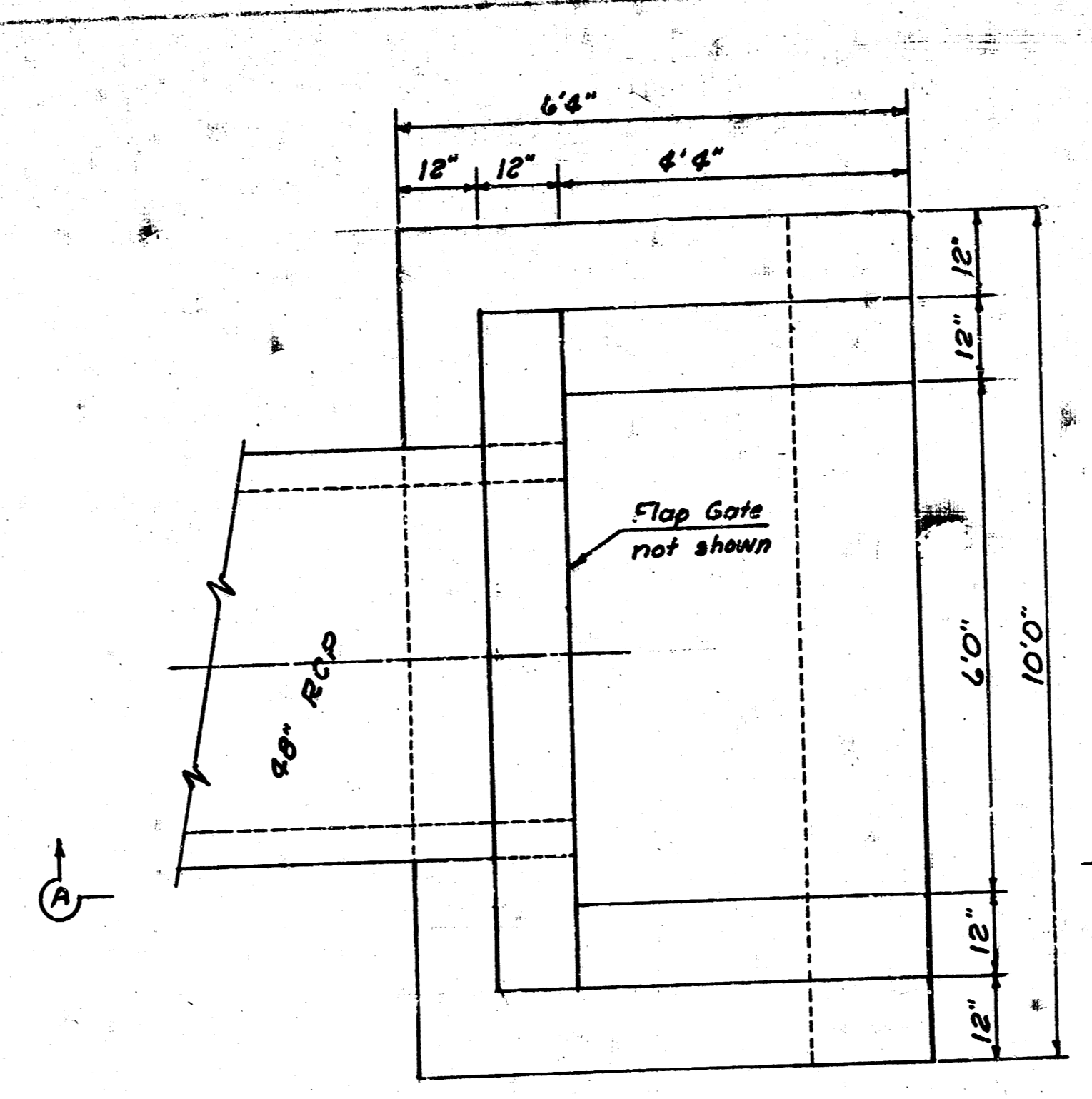
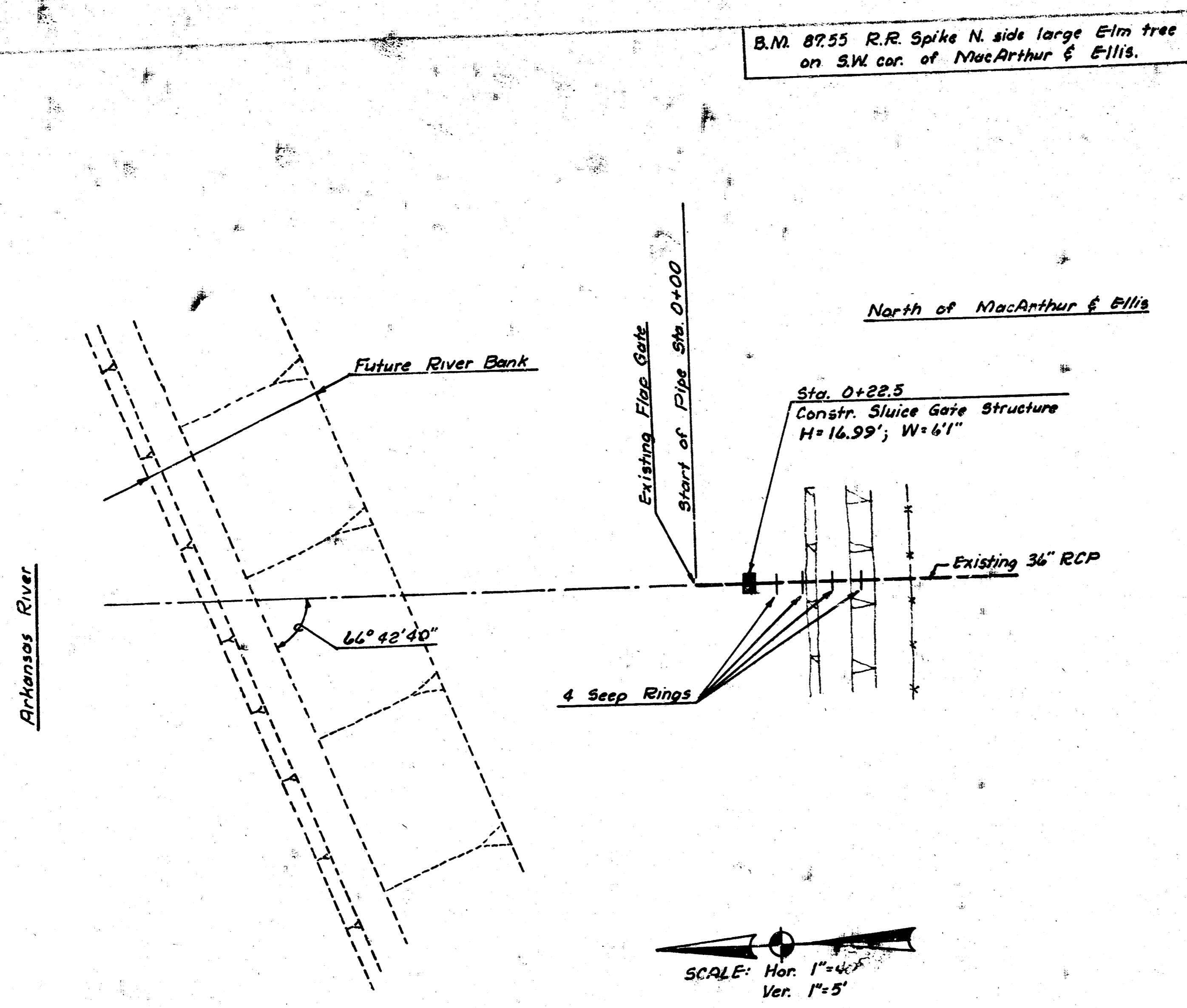


SECTION LAYOUT OF Junction Box Section  
At McLean & 25th St South Extended  
Scale: 1/2" = 10'

SCALE: Hor. 1" = 40'  
Ver. 1" = 5'

NOTE: FIELD ENGINEER TO CONTACT FLOOD CONTROL TO DETERMINE CHANNEL ALIGNMENT AT McLEAN AND 25th STREET SOUTH LOCATION.





HEADWALL Scale: 1/2"=1'-0"

### INSTALLATION AND ADJUSTMENT OF LIFT, STEM AND GUIDES

1. Place anchor bolts for lift and stem guides as shown on installation drawing. Check for proper alignment of lift, stem guides and gate.
2. Provide opening with adequate clearance in lift platform for gate stem (and splices where installation drawing indicated it will take into hole in lift platform).
3. Pour concrete as required. Remove forms.
4. When more than one gate is to be installed stems may be of different diameters, lengths, etc. Stems are marked and/or tagged for each gate installation. Separate the stems per individual gate installation. CAUTION: Extreme care must be taken in handling and installing threaded stems. Loose protective wrapping on threaded sections will stem is installed. Nicks or burrs will damage threads in lift nut.
5. The stem block was attached to the bottom section of stem for shipment. Loosen the set screw through this block and remove the block.
6. Insert stem block in gate slide pocket. Be sure the set screw is exposed or pointing toward you.
7. Stems may be in more than one piece both to facilitate shipment and installation. If two or more pieces are furnished for an installation, they must be installed in their proper order from bottom to top to place splices in correct location so that they won't interfere with the stem guides when the gate is opened or closed. The ends of each stem section and connecting components, the correct location.
8. Lower bottom section of stem into place through the hole of the gate slide and screw it into the stem block. With the set screw removed from the block, turn the stem into the block until set screw hole is properly aligned.
9. CAUTION: Immediately insert the set screw and tighten to lock bottom section of the stem to the block. (Set screw is omitted on non-rising stem gates as the turning motion is between the block and the stem.)
10. Place succeeding stem section. Double check shop marking of sections to make sure each is in its proper location. Slight misalignment will cause undue wear to the threaded lift nut. When binding is not caused by misalignment, recheck to make certain all threads on stem and in lift nut are clean.
11. CAUTION: Washers are not supplied and should not be used as they will allow the collar to slip on the bracket after it is locked in place.
12. Grout under the lift (if required). After grout has set, tighten the anchor bolts uniformly.
13. CAUTION: Before opening the gate, stem all great stems or other foreign material from the top of the gate. Also check projection of anchors or studs across top of the gate opening. Excess bolt projection will damage the top brace seating face as the slide as it is opened.
14. Turn lift or handwheel to open the gate, until gate slide is pulled from its wedges. The stem is now in tension and should be straight. Check to make certain that stem is straight. Beginning at the bottom, make final alignment of stem if required and tighten nuts on bolts holding collars to the gate bracket.
15. Move the gate to its fully opened position. Apply grease to the stem through the fitting in the adaptor at maximum intervals of gate movement of 5 or 6 inches.
16. Place stop collar (if used) against the upward stop. Mark stem with set screw. Slide collar out of position and spot drill stem 1/8-inch deep. Position collar and tighten all fasteners securely.
17. Lower the gate to its fully closed position and check wedges and seating faces as described under final gate adjustment.
18. Run stop nut down on the top of the projecting threaded stem until it makes firm contact with the top of the lift nut. (See illustration.) Tighten the set screw through the stop nut to hold it in place.
19. Install stem cover, indicator, etc., as required. (Separate installation information is furnished.)

