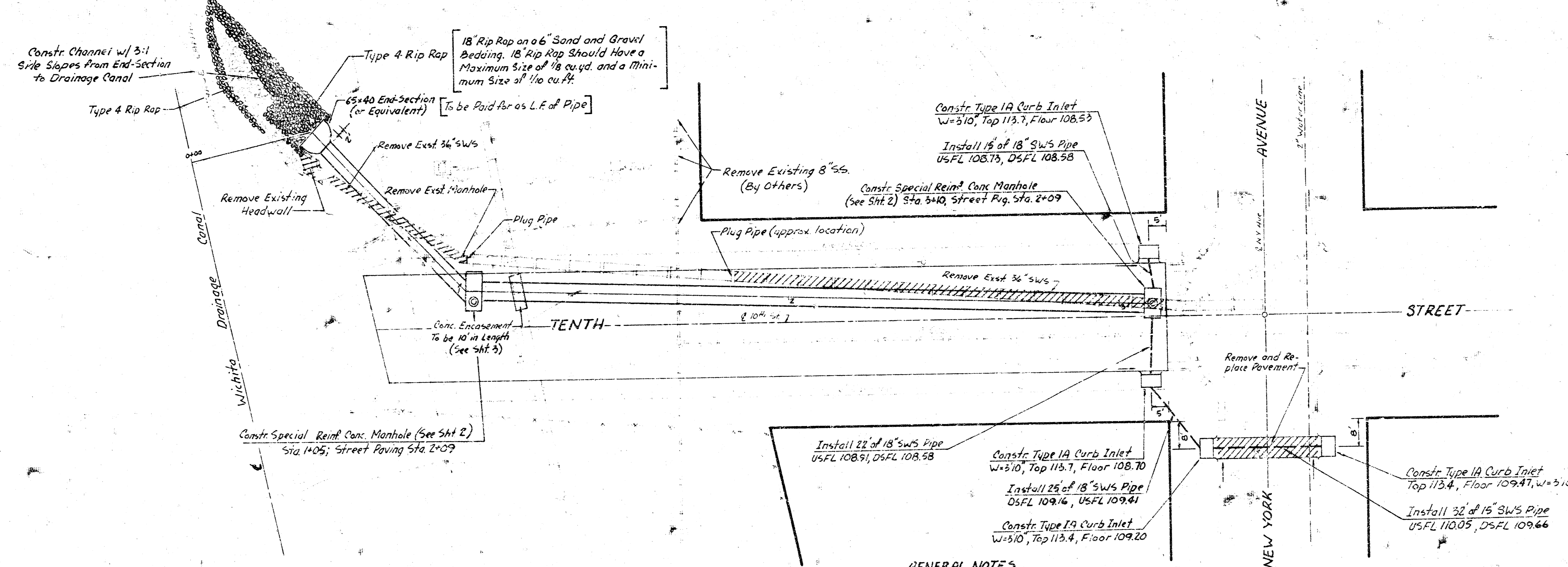
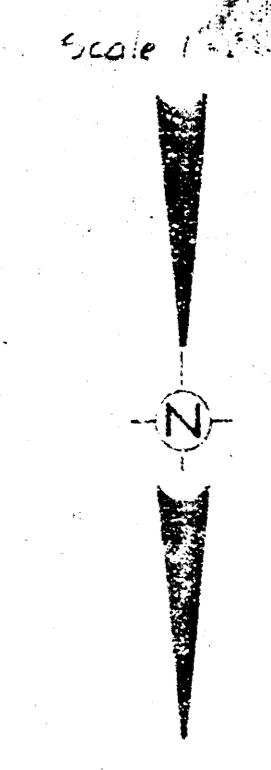
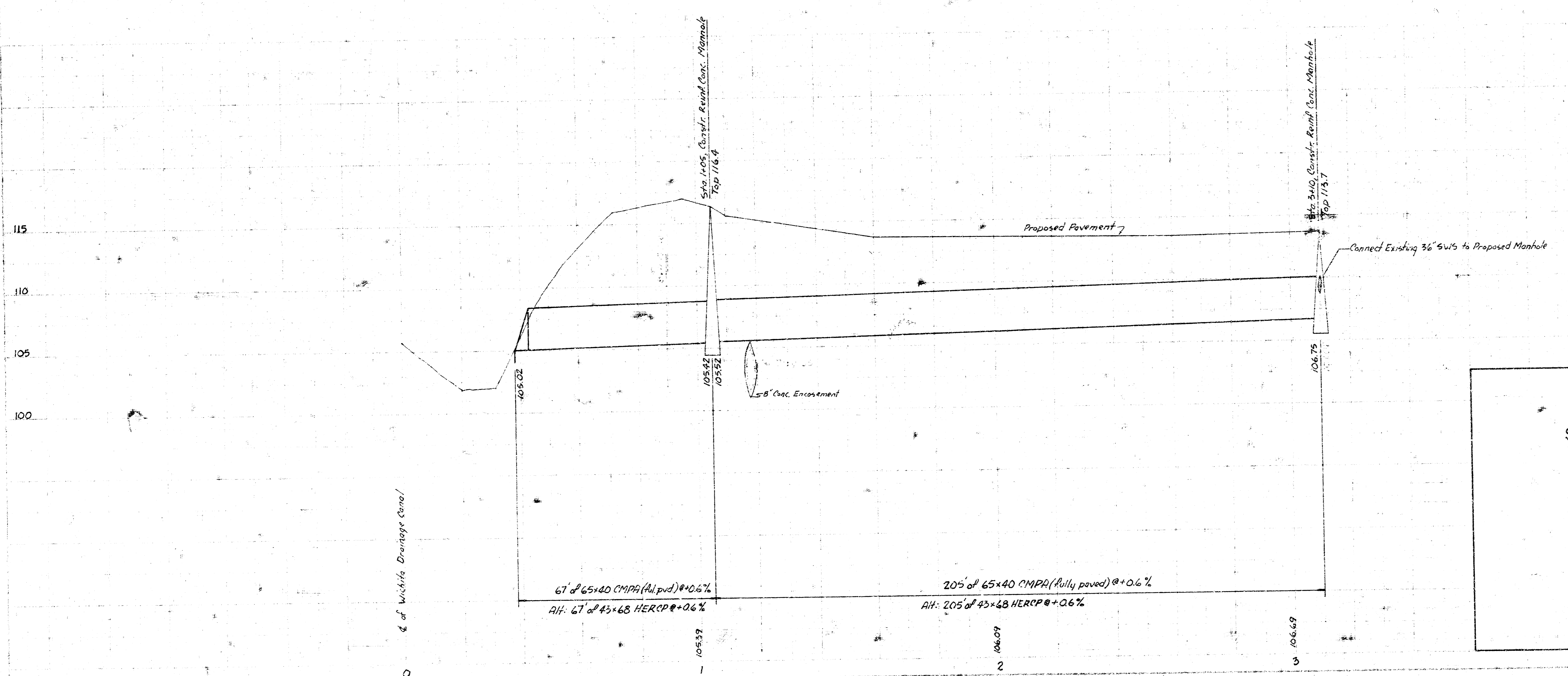


B.M. 113.66 Top Curb in SE Corner of New York Ave and Tenth St; 2' N. of S. End of Return



**GENERAL NOTES**  
 All CMP's 21" (or Equivalent Arch Pipe) and less shall be Helically Corrugated Metal Pipes.  
 All CMP's Diameter 24" or Larger (or Equivalent Arch Pipe) shall be Fully Rived Corrugated Metal Pipe.



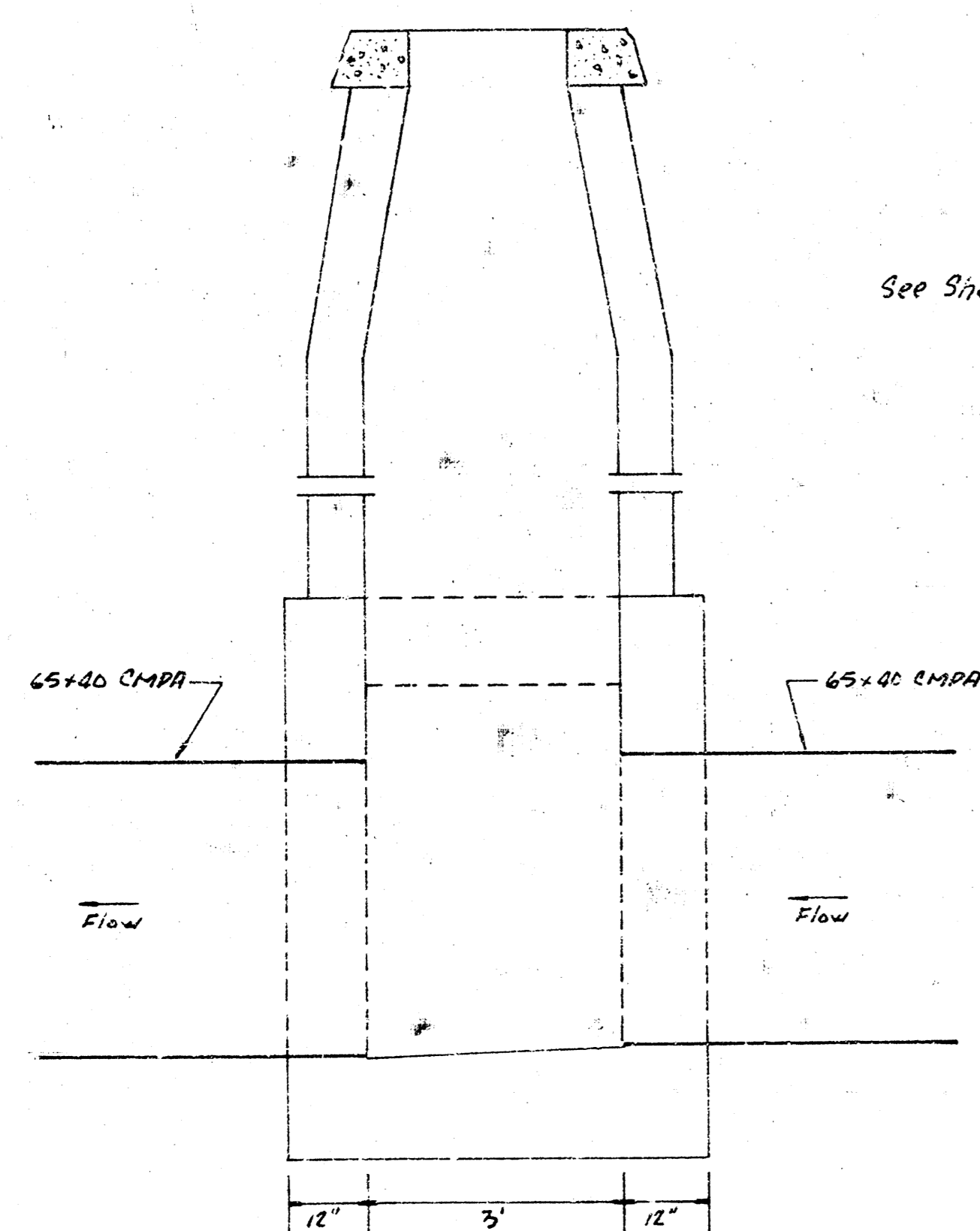
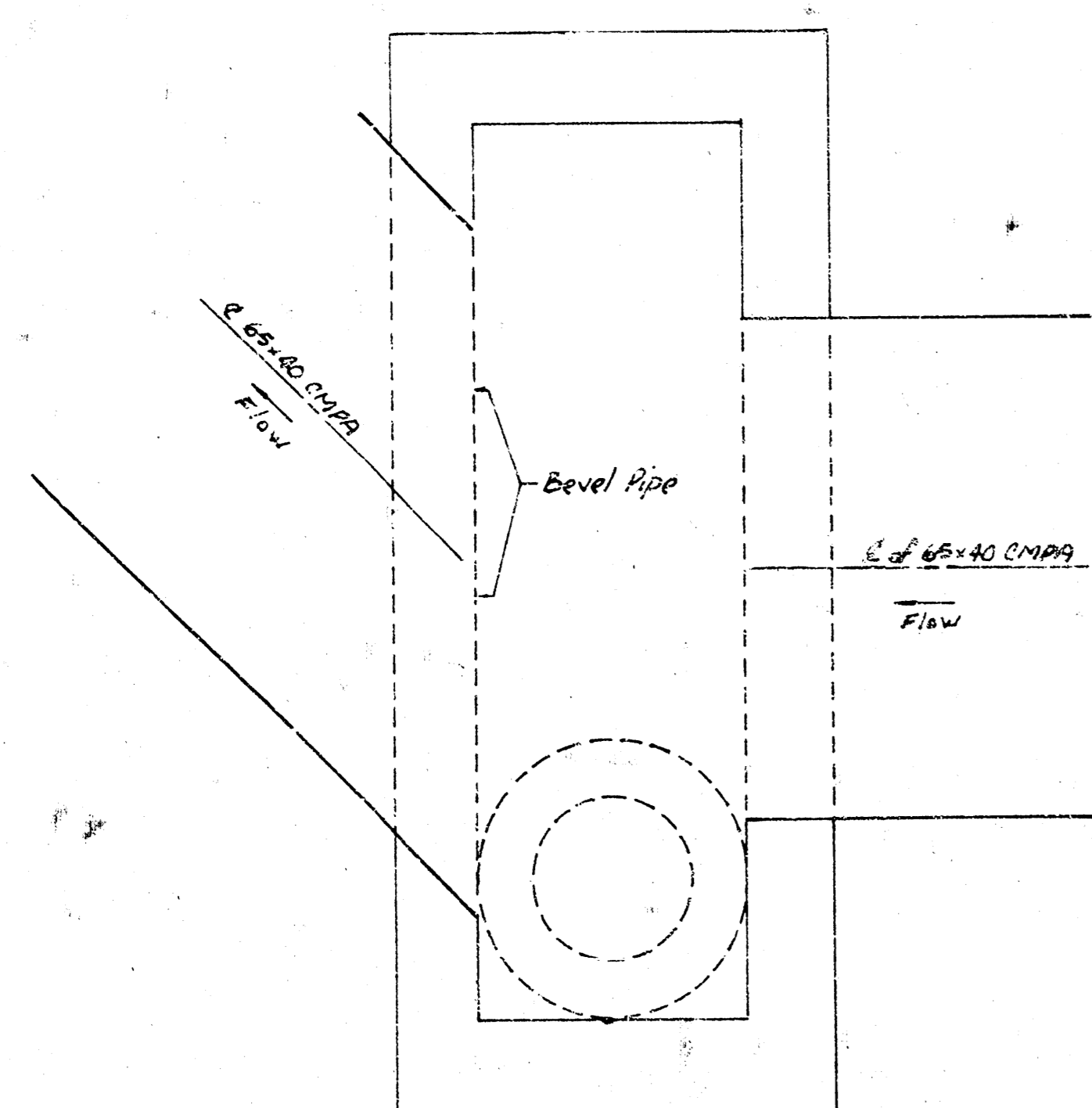
SUPPLEMENT to PORTION of  
 STORM WATER SEWER in 10th STREET  
 E.L. NEW YORK TO DRAINAGE CANAL  
 STORM WATER SEWER PROJ. DBKA 577038

CITY OF WICHITA, KANSAS  
 R.W. LINN CITY ENGINEER  
 DATE: DECEMBER, 1977

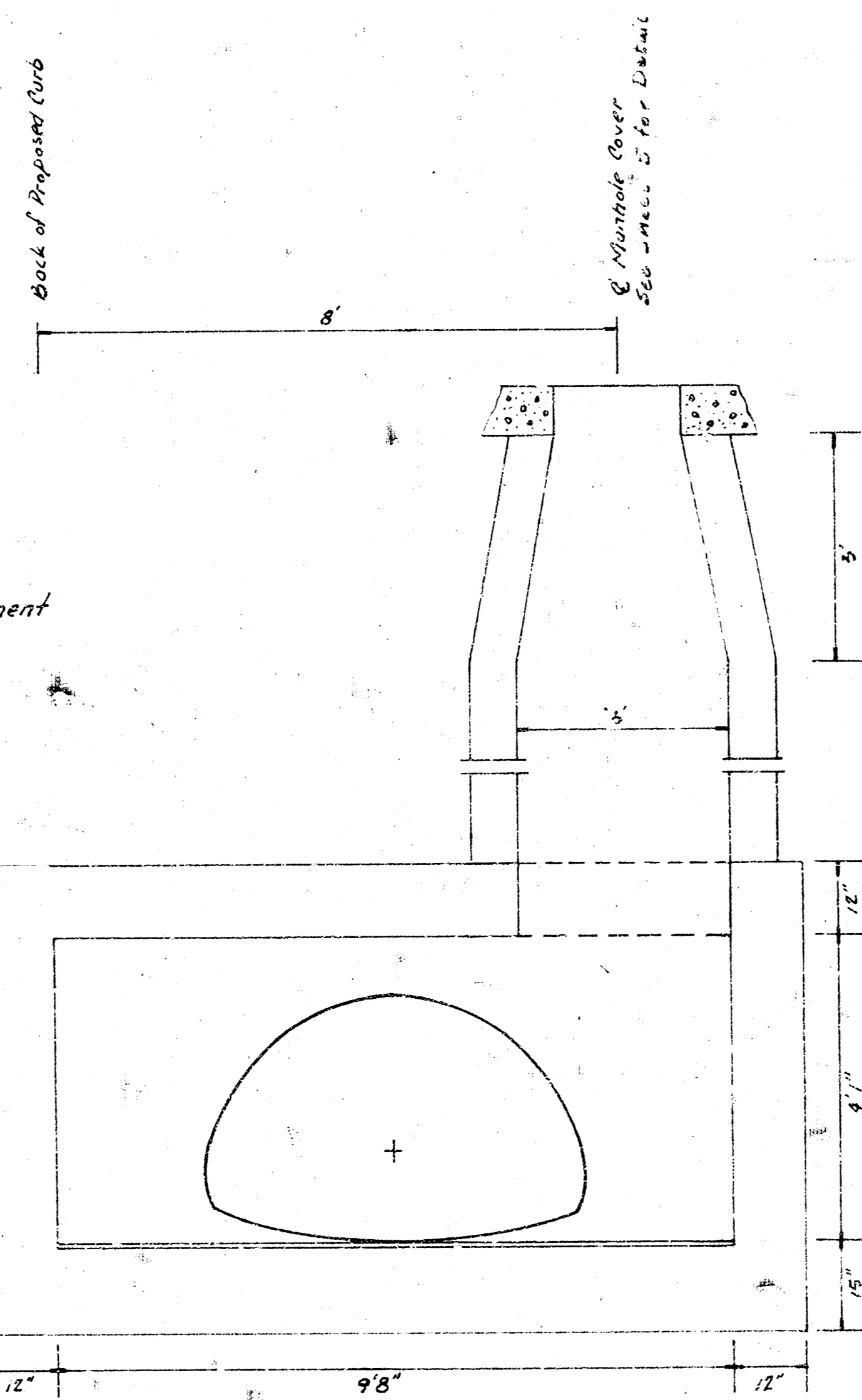
FIGURE 1  
 U.C. 18  
 Bureau  
 12-77

# REINFORCED CONCRETE MANHOLE DETAILS

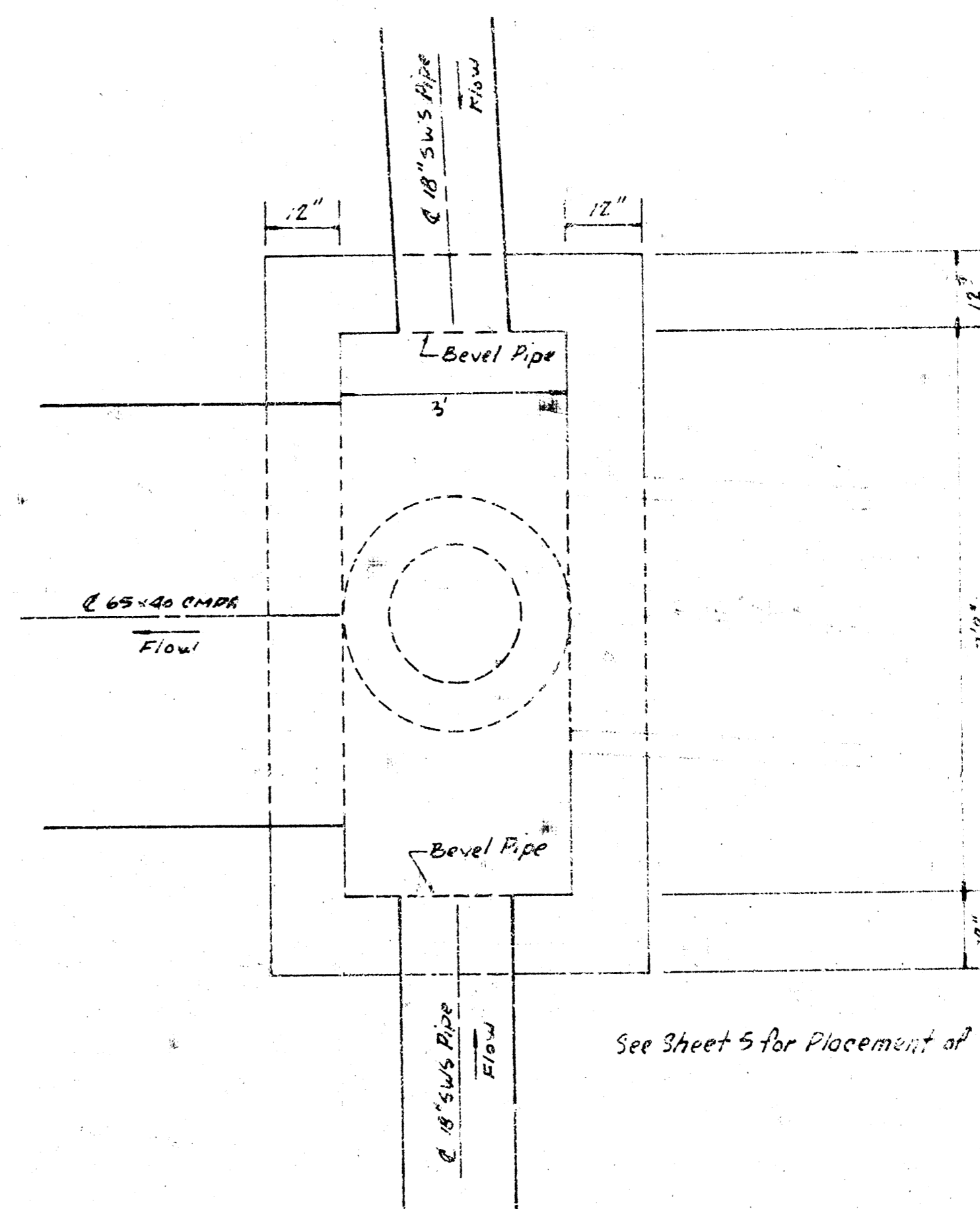
SCALE 1"=2'



See Sheet 5 for Placement of Steel Reinforcement



MANHOLE at Sta. 1+05



See Sheet 5 for Placement of Steel Reinforcement

MANHOLE at Sta. 3+10