

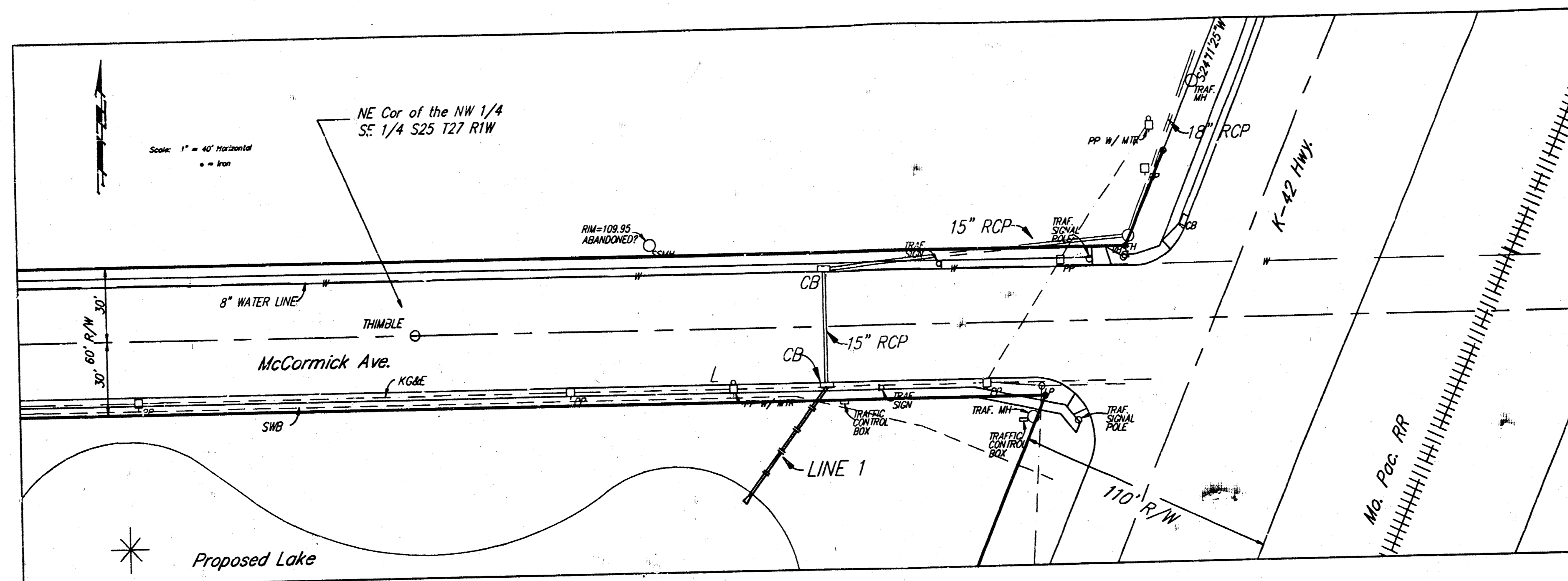
# STORMWATER SEWER FOR KANSAS NEWMAN COLLEGE

Private Project Number  
**462 PPS (607861)**

**CITY OF WICHITA, KANSAS**  
Michael E. Lindebak City Engineer

## General Notes

- Contractor will be required to provide notice to utility companies a minimum of twenty-four (24) hours prior to any excavation, as follows:  
Kansas One-Call 687-2470  
The Contractor must notify the following in case of an emergency:  
Cablevision 262-4270  
or 263-2061  
K.P.L. Gas Service Company 263-7511  
Kansas Gas & Electric Company 264-1141  
Arkla Gas Company 942-8350  
or 263-8161  
Southwestern Bell Telephone Company 1-571-2611
- Contractor shall not start work on the project until the project inspector is assigned to the project and is present on the site. Any work done without inspection will be required to be uncovered for inspection.
- Exist. utilities and their locations, as shown on the plans, represent the best information obtainable for design. Location information has been obtained from the various utility companies and is either from company record drawings or company-provided field locations. The Contractor will be required to work around existing utilities which do not conflict with proposed construction.
- The storm sewer shall be constructed on the alignment shown by the plans. Trees and shrubs which are in direct conflict with proposed new construction shall be removed by the Contractor with the Engineer's approval. Trees and shrubs which are not in direct conflict with proposed new construction shall be saved and protected from damage.
- Traffic affected by the construction on this project shall be handled in accordance with the latest edition of the Manual on Uniform Traffic Control Devices.
- The Contractor to verify utility locations prior to construction of this project.
- Rubble from removal of miscellaneous structures and excess excavation which is to be wasted shall be disposed of on sites to be provided by the Contractor. Disposal sites shall be approved by the Engineer as to suitability, appearance, and location. Locations not, in the opinion of the Engineer, will leave an unsightly appearance will not be approved.



Site Location

BOOKED  
3-24-95  
MEG

## Sheet Index

- Cover Sheet
- Plan & Profile

## Benchmark

CITY OF WICHITA BRASS DISC, TOP OF CURB AT  
SOUTHEAST CORNER SHERIDAN & MCCORMICK.  
ELEV. = 111.46 (CITY DATUM)

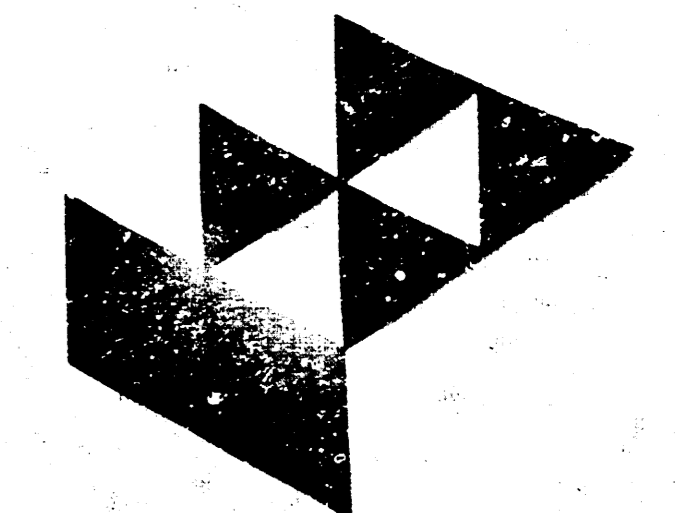
As Built 7-28-94 A.Z.

APPROVED AS NOTED  
BY CITY ENGINEER OF WICHITA

Sanitary Sewers \_\_\_\_\_  
Storm Sewers URH 5/12/94  
Driveway Approaches \_\_\_\_\_  
Water Mains \_\_\_\_\_  
Paving \_\_\_\_\_

### NOTE TO CONTRACTORS

Inspection and testing for this project is to be provided by a Licensed Consulting Engineering Firm under contract with the Owner/Developer. Said inspection to be in accordance with the City of Wichita standard construction engineering practices and certified by a Licensed Professional Engineer. No work shall be performed in dedicated easements or public right-of-way by the Contractor without such inspection nor shall any work be commenced without written authorization by the City Engineer. All Construction and Materials shall comply with the City of Wichita Specifications and Standards (on file and available in the City Engineer's Office).

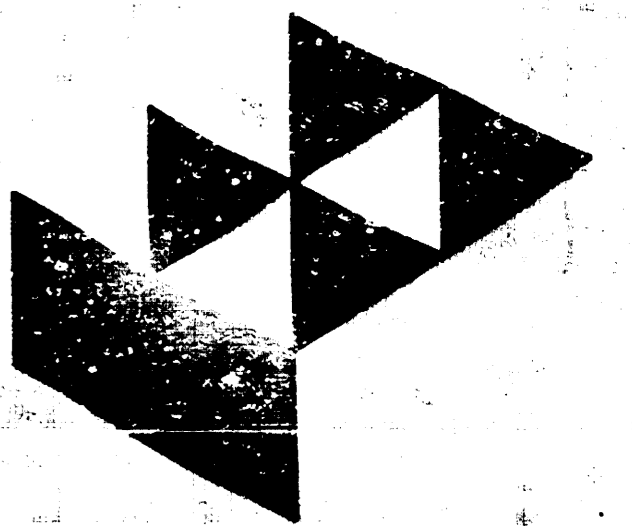


**GossenLivingston**  
Architect  
430 South Express  
Wichita, KS 67202  
Tel (316) 262-4307  
Fax (316) 262-5446

*Michael E. Lindebak*  
5/11/94

KANSAS NEWMAN COLLEGE  
NURSING/CLASSROOM BUILDING  
WICHITA, KANSAS

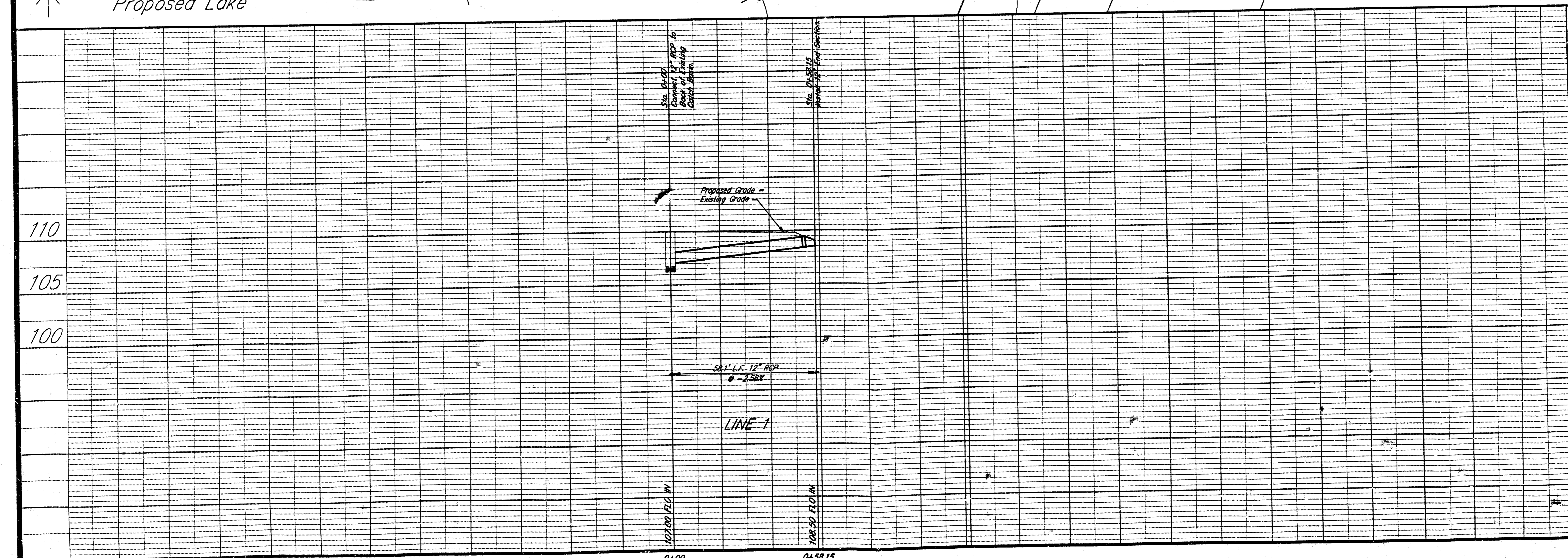
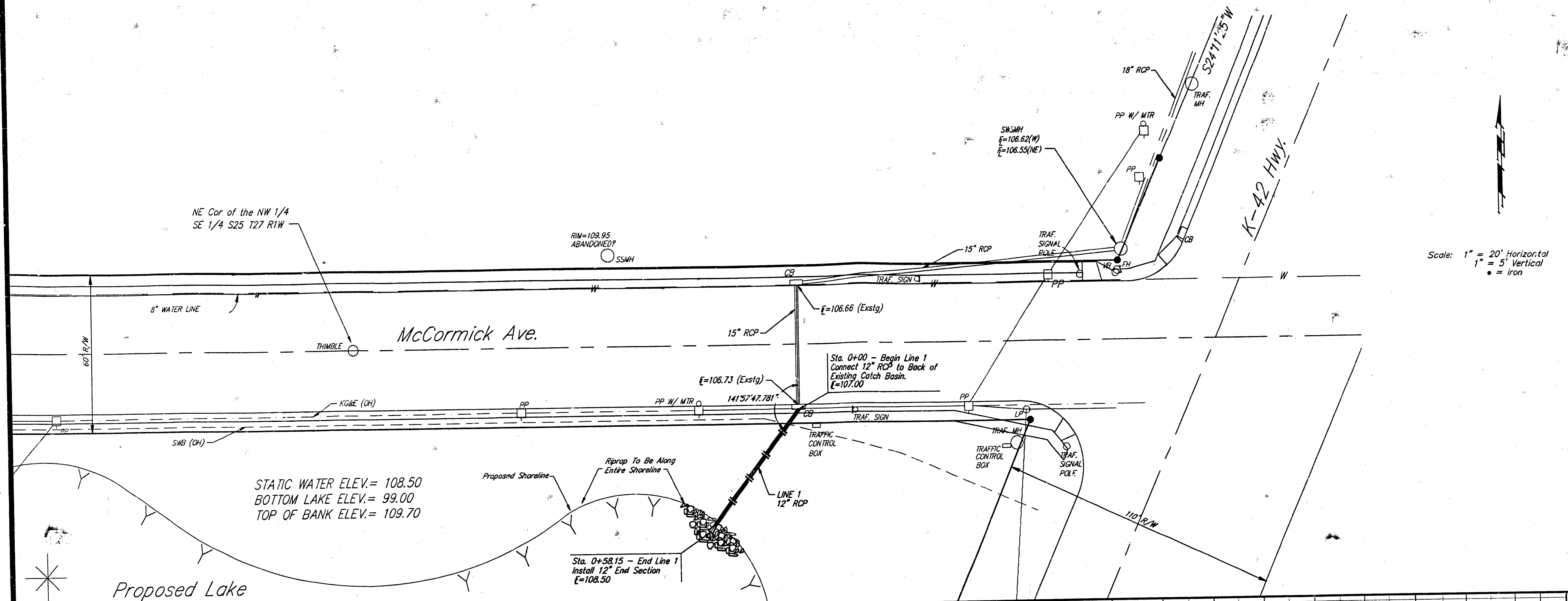
JOB NO.	462-PPS(607861)	1
DATE	5-11-94	OF
DRAWN	TA	2
CHECKED	TA	



**GossonLivingston**

Architectural  
430 South Espino  
Wichita, KS 67202  
Tel (316) 265-3877  
Fax (316) 265-3946

Scale: 1" = 20' Horizontal  
1" = 5' Vertical  
● = Iron



**KANSAS NEWMAN COLLEGE**  
NURSING/CLASSROOM BUILDING  
WICHITA, KANSAS

SWS Plan & Profile

JOB NO.	462-PPS(607861)	2
DATE	5-11-94	OF
DRAWN	TA	2
CHECKED	TA	