

CITY OF WICHITA



SEDGWICK COUNTY, KANSAS

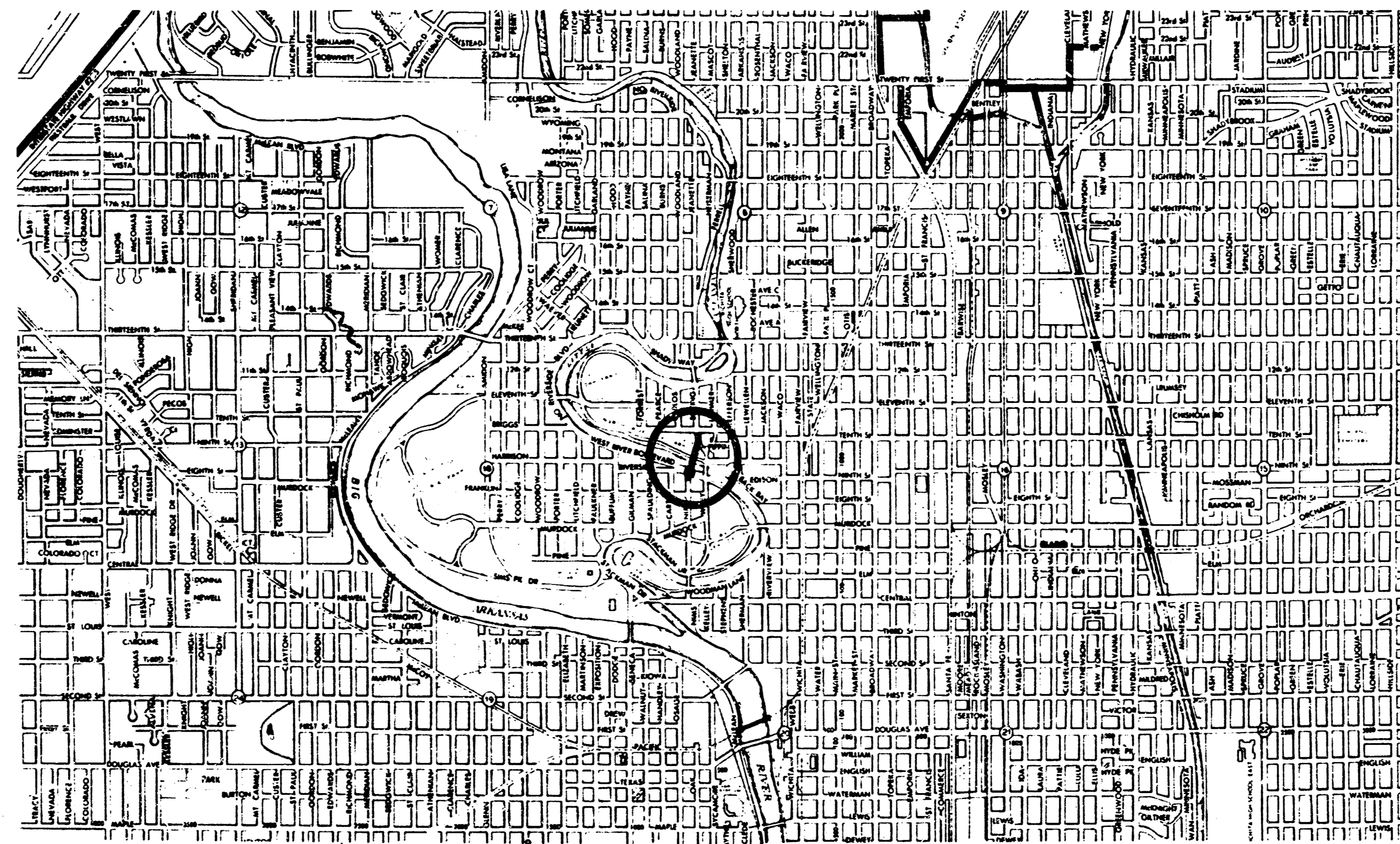
PART I
GRADING
DRAINAGE
PAVING

PART II
BRIDGE

GREIFFENSTEIN BRIDGE

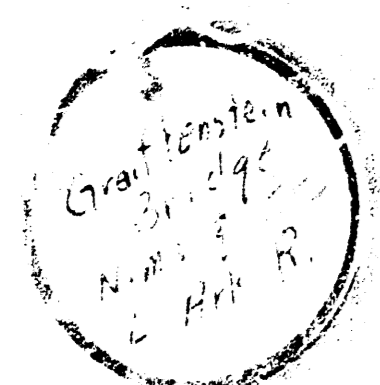
INDEX OF SHEETS

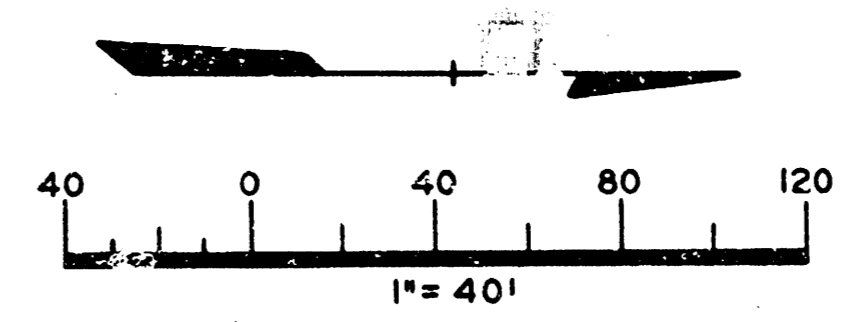
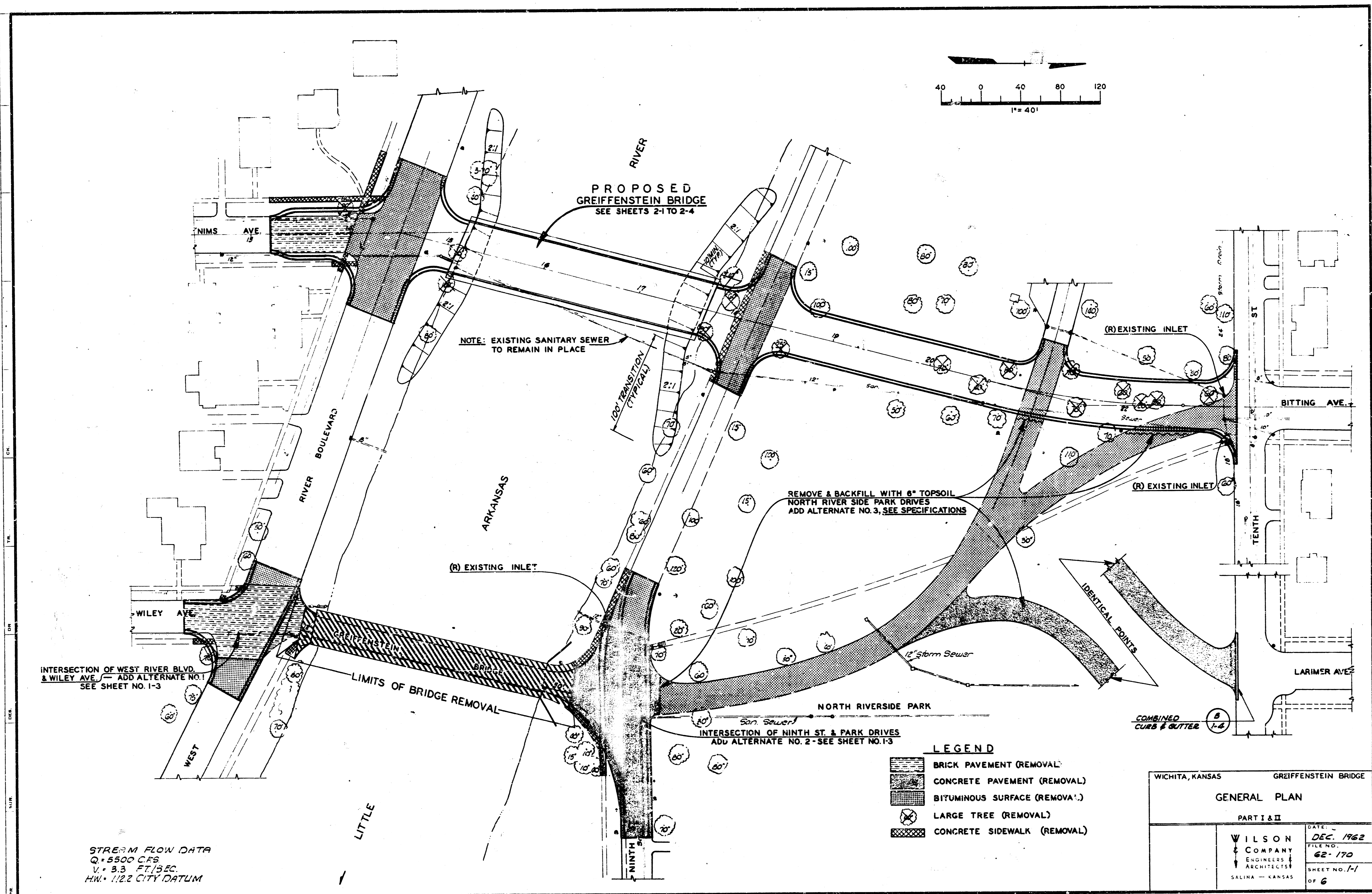
- PART I
- TITLE SHEET
 - 1-1 GENERAL LAYOUT
 - 1-2 GRADING & DRAINAGE - PLAN & PROFILE
 - 1-3 GRADING PLAN - ALTERNATES 1 & 2
 - 1-4 TYPICAL SECTIONS
 - 1-5 HEADWALL & MANHOLE DETAILS
 - 1-6 DRAINAGE DETAILS
- PART II
- 2-1 BRIDGE CONSTRUCTION LAYOUT
 - 2-2 ABUTMENT & MISC. DETAILS
 - 2-3 PIER & MISC. DETAILS
 - 2-4 DECK REINFORCING



LITTLE ARKANSAS RIVER CROSSING

1962





**PROPOSED
GREIFFENSTEIN BRIDGE**
SEE SHEETS 2-1 TO 2-4

NOTE: EXISTING SANITARY SEWER
TO REMAIN IN PLACE

REMOVE & BACKFILL WITH 6" TOPSOIL
NORTH RIVER SIDE PARK DRIVES
ADD ALTERNATE NO. 3, SEE SPECIFICATIONS

INTERSECTION OF WEST RIVER BLVD.
& WILEY AVE. — ADD ALTERNATE NO. 1
SEE SHEET NO. 1-3

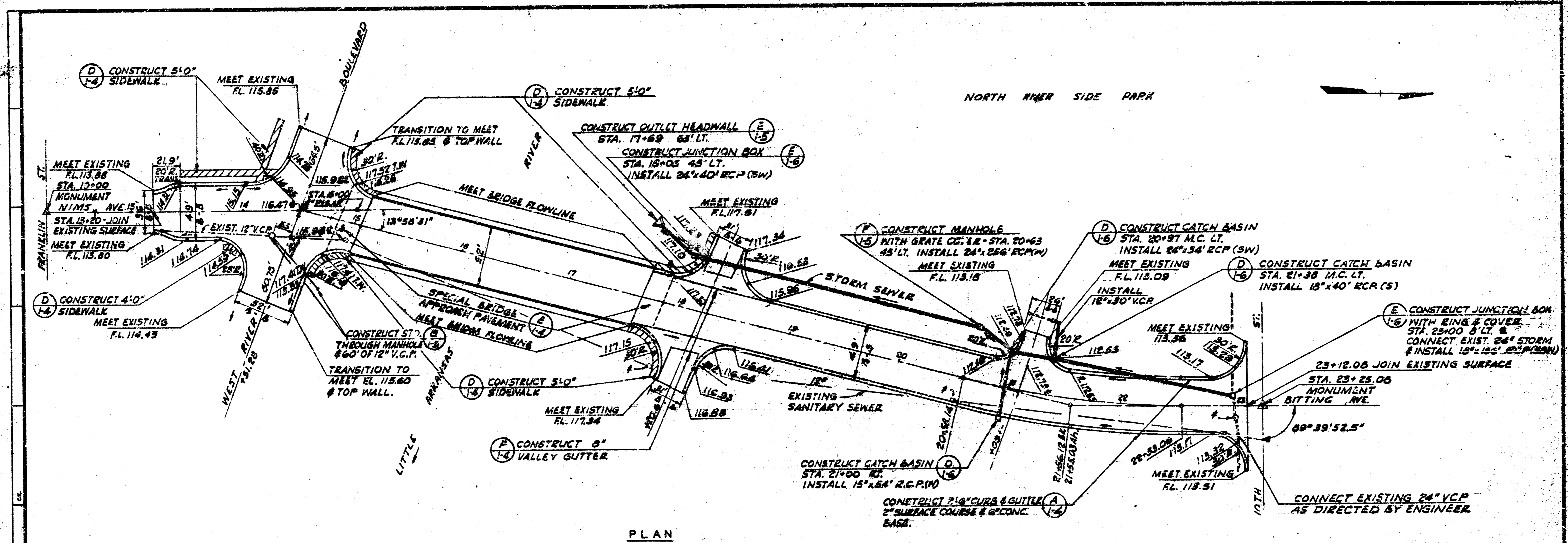
LIMITS OF BRIDGE REMOVAL

INTERSECTION OF NINTH ST. & PARK DRIVES
ADD ALTERNATE NO. 2 - SEE SHEET NO. 1-3

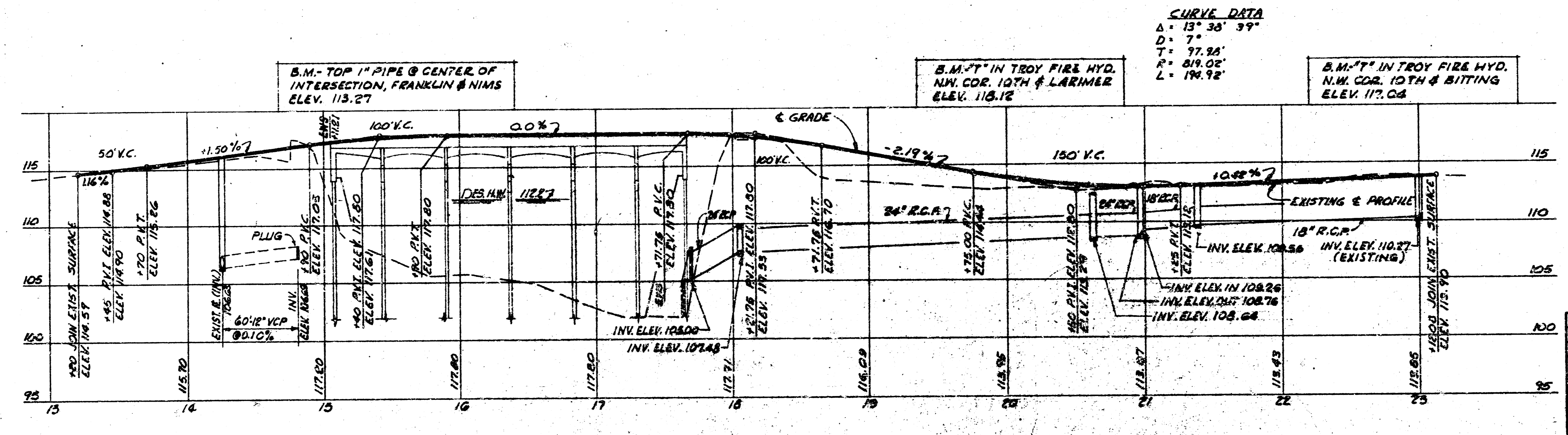
- LEGEND**
- BRICK PAVEMENT (REMOVAL)
 - CONCRETE PAVEMENT (REMOVAL)
 - BITUMINOUS SURFACE (REMOVAL)
 - LARGE TREE (REMOVAL)
 - CONCRETE SIDEWALK (REMOVAL)

STREAM FLOW DATA
Q = 5500 CFS
V = 3.3 FT/SEC.
HW = 112.2 CITY DATUM

WICHITA, KANSAS		GREIFFENSTEIN BRIDGE	
GENERAL PLAN			
PART I & II			
WILSON COMPANY ENGINEERS & ARCHITECTS SALINA — KANSAS	DATE	DEC. 1962	
	TITLE NO.	62-170	
	SHEET NO.	1-1	
		OF 6	



PLAN



PROFILE

CURVE DATA
 $\Delta = 13^{\circ} 30' 39''$
 $D = 7'$
 $T = 77.98'$
 $R = 89.02'$
 $L = 194.12'$

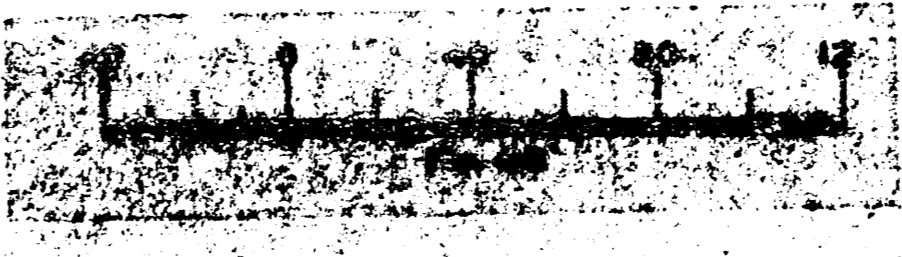
B.M. - TOP 1" PIPE @ CENTER OF INTERSECTION, FRANKLIN & NIMS ELEV. 113.27

B.M. - 7" IN TROY FIRE HYD. N.W. COR. 10TH & LARIMER ELEV. 116.12

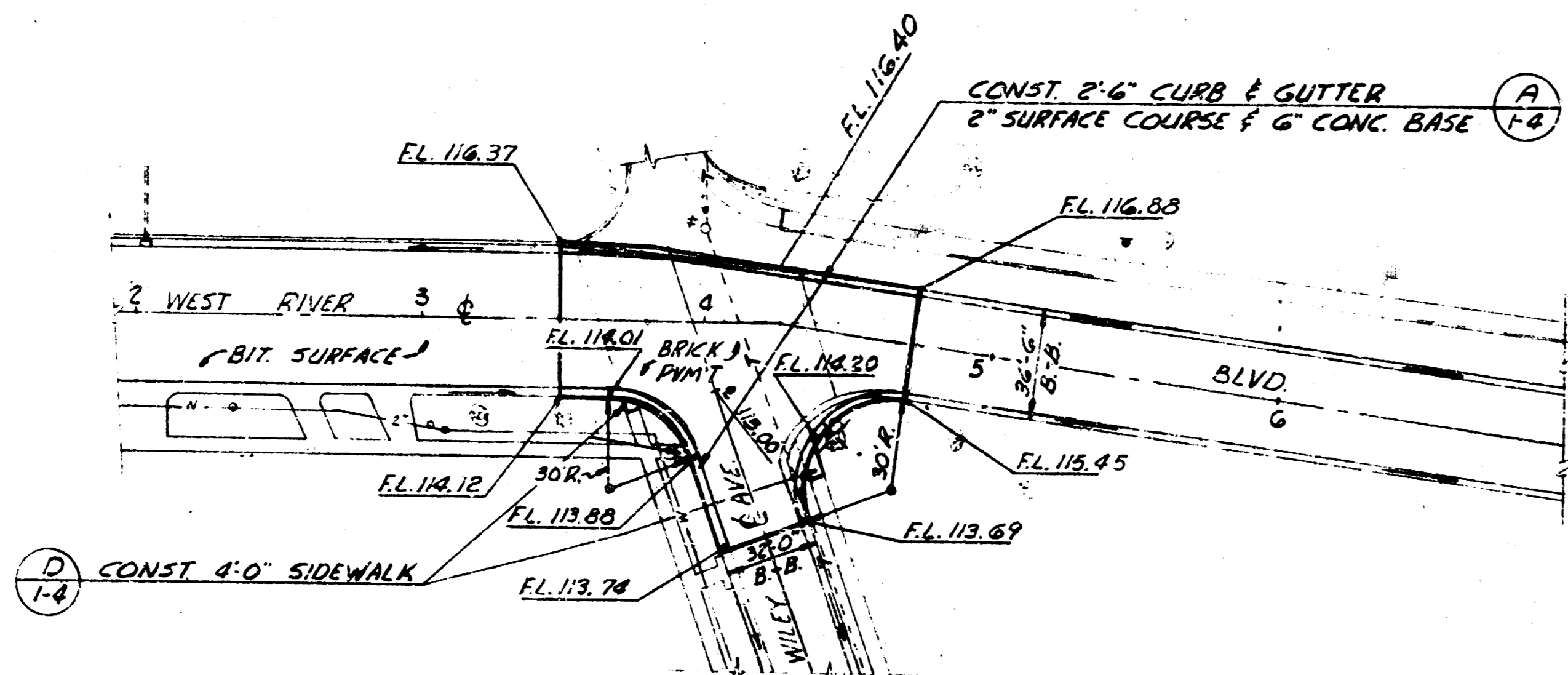
B.M. - 7" IN TROY FIRE HYD. N.W. COR. 10TH & BITTING ELEV. 117.08

- NOTE:
1. ALL ELEVATIONS SHOWN ARE TO FLOWLINE OF COMBINED CURBS & GUTTER, UNLESS OTHERWISE NOTED.
 2. REGRADE MANHOLES MARKED 'R'.
 3. TITLE (A) - DETAIL DESIGNATION SHEET ON WHICH DETAIL APPEARS.
 4. PRESERVE ALL EXISTING MONUMENTS AS DIRECTED BY ENGINEER.

REVISION:	DATE:	BY:
WICHITA, KANSAS GREIFENSTEIN BRIDGE		
GRADING & DRAINAGE PLAN - PROFILE		
PART I		
WILSON COMPANY ENGINEERS ARCHITECTS BALHA - KANSAS	DATE: DEC. 1958	TITLE NO. 62-150
	SHEET NO. 11	OF 11

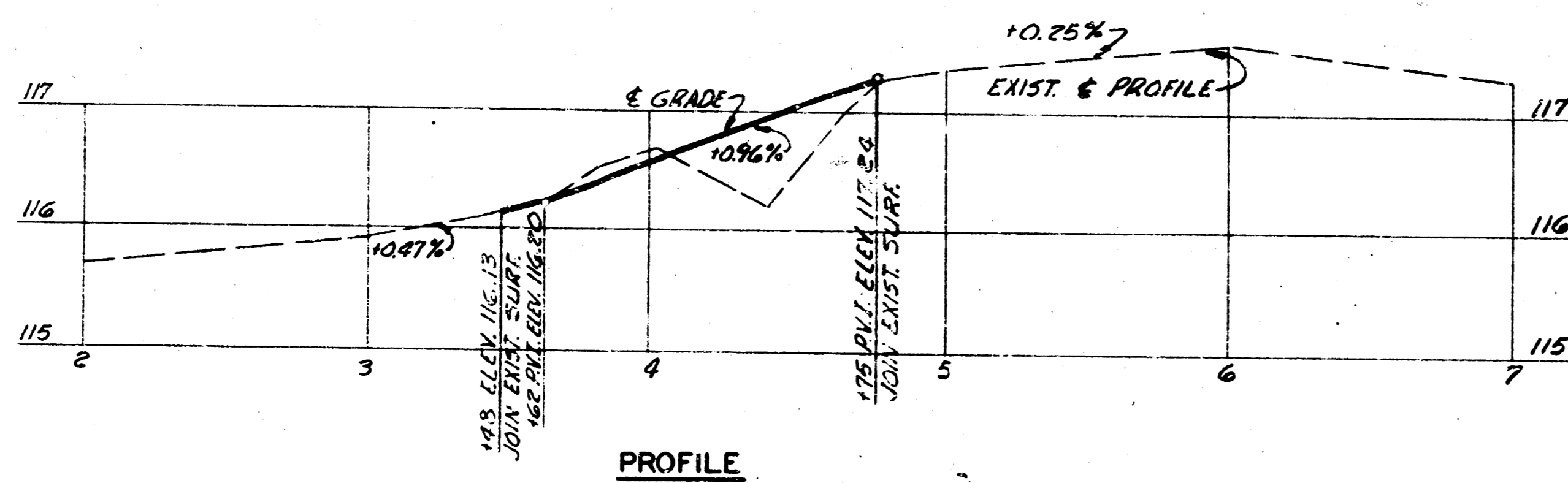


SCALE 1"=40'



PLAN

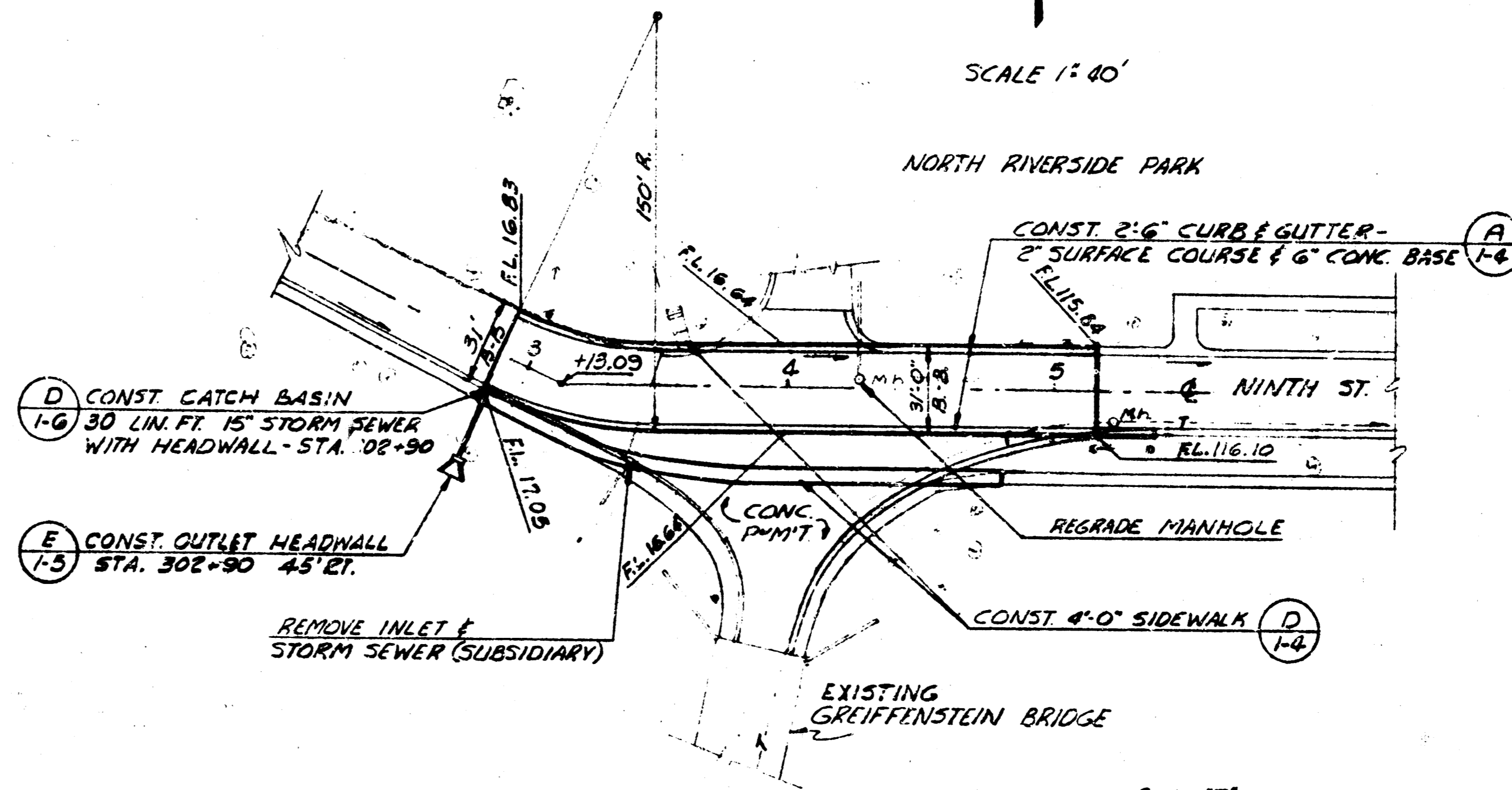
B.M. TOP 1" PIPE - SW COR. OF WILEY AVE. & WEST RIVER DRIVE ELEV. 114.77



PROFILE

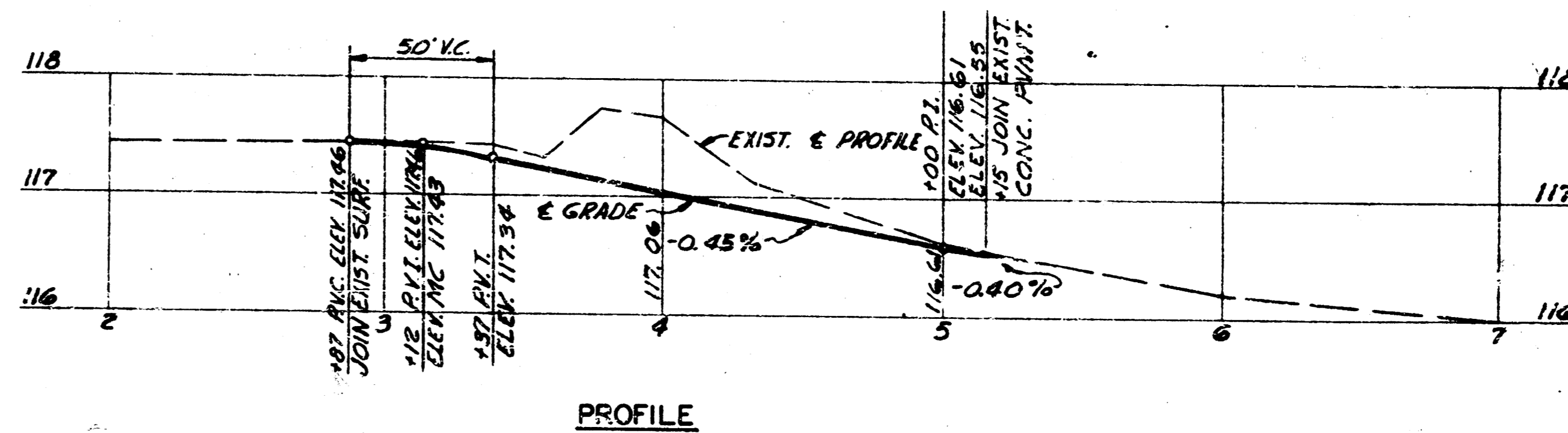
INTERSECTION OF WEST RIVER BLVD. & WILEY AVE.
ADD ALTERNATE NO. 1

SCALE 1"=40'



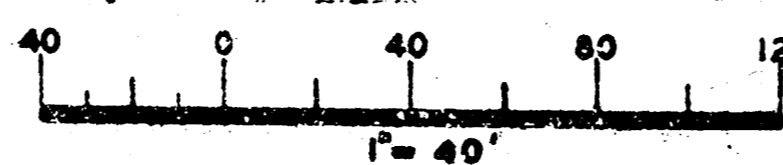
PLAN

B.M. "T" IN TROY FIRE HYDRANT NW COR. OF 10TH & LARIMER ELEV. 118.12



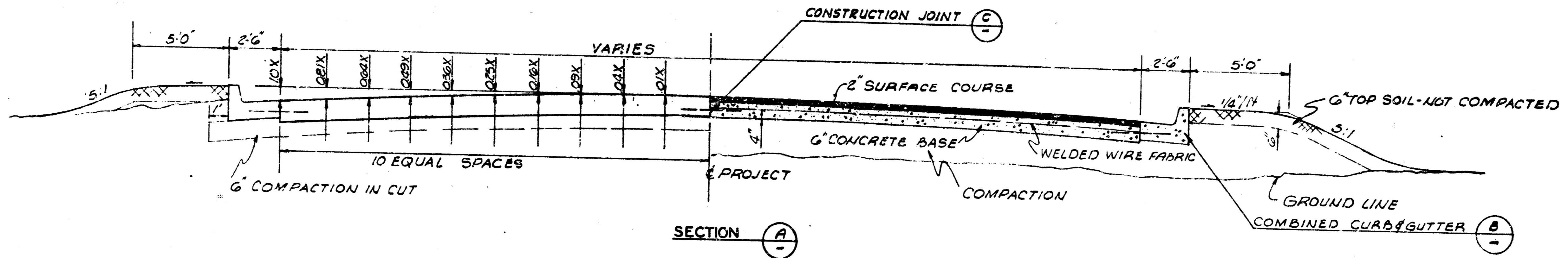
PROFILE

INTERSECTION OF NINTH ST. & PARK DRIVES
ADD ALTERNATE NO. 2

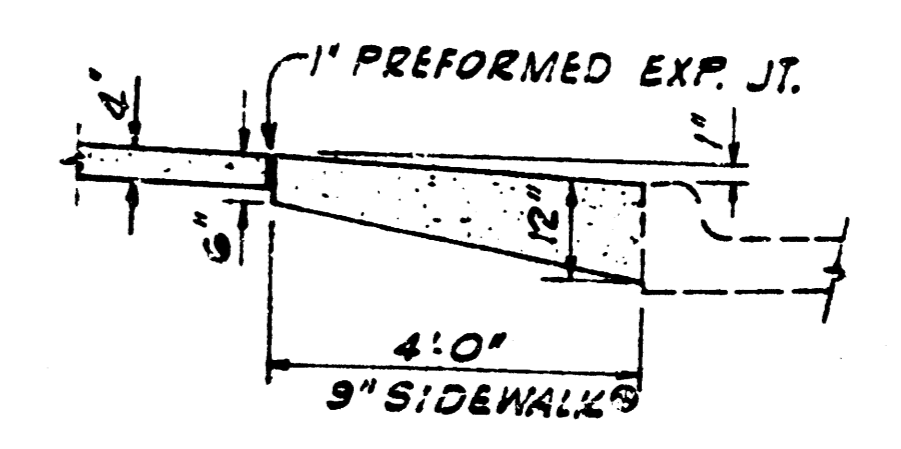
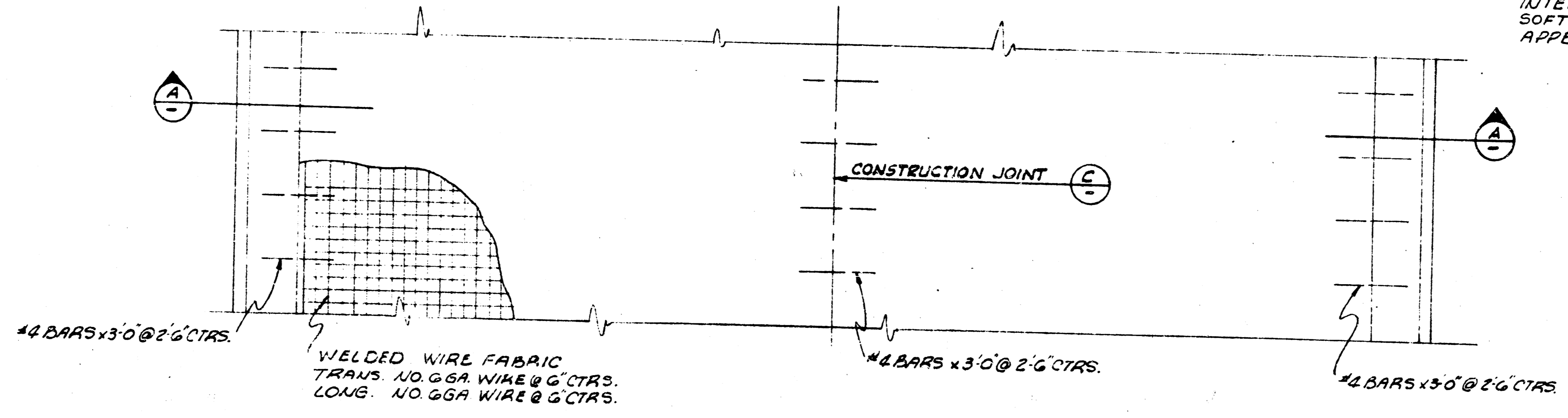


REVISION:	DATE:
WICHITA, KANSAS	GREIFFENSTEIN BRIDGE
GRADING PLAN ALTERNATES 1 & 2	
PART I	
WILSON & COMPANY ENGINEERS & ARCHITECTS SALINA - KANSAS	DATE: DEC. 1968 FILE NO. 68-170 SHEET NO. 13 OF 6

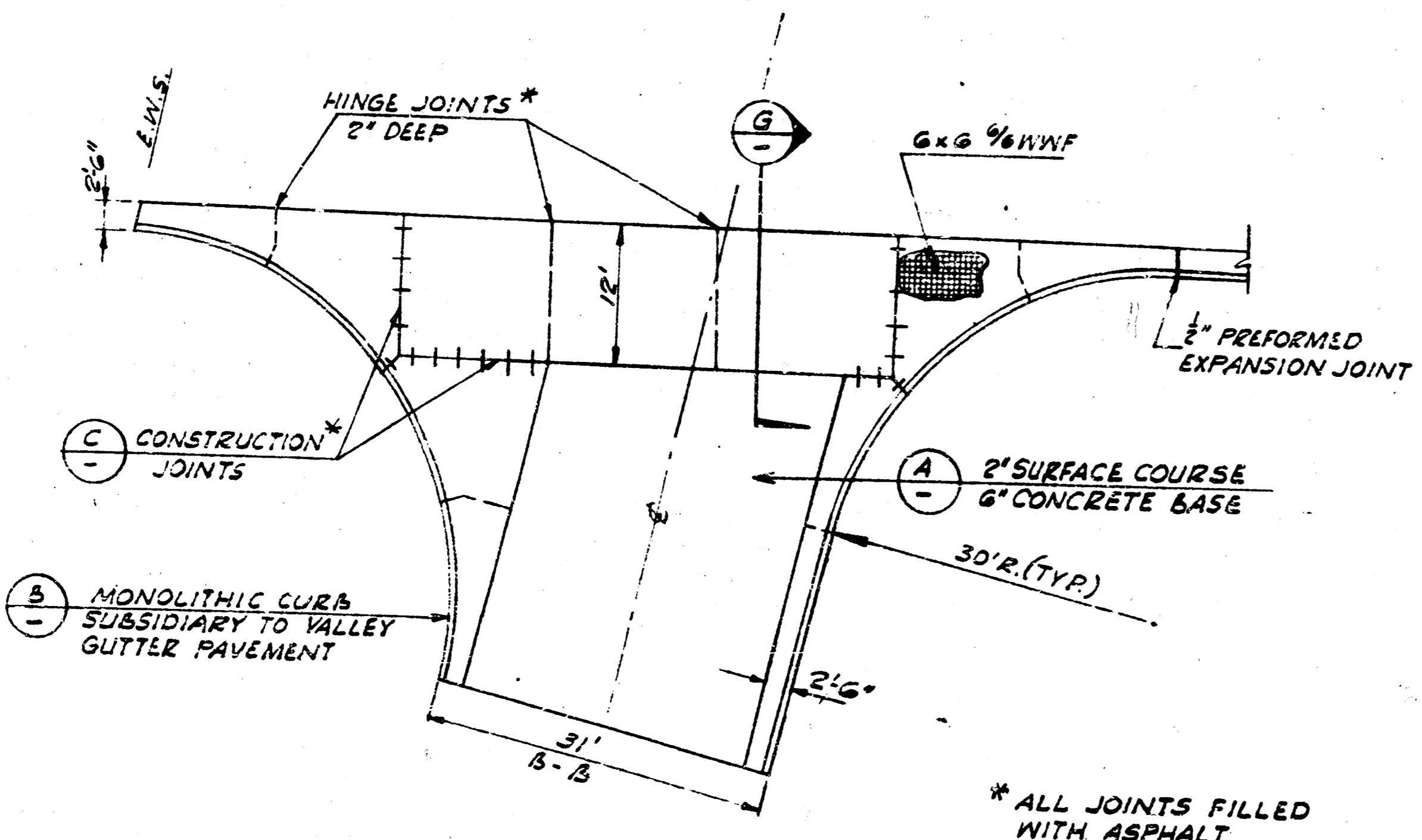
WIDTH- FEET BACK TO BACK	CROWN "X"
49 FOOT	.49 FOOT
56 FOOT	.56 FOOT
51 FOOT	.51 FOOT



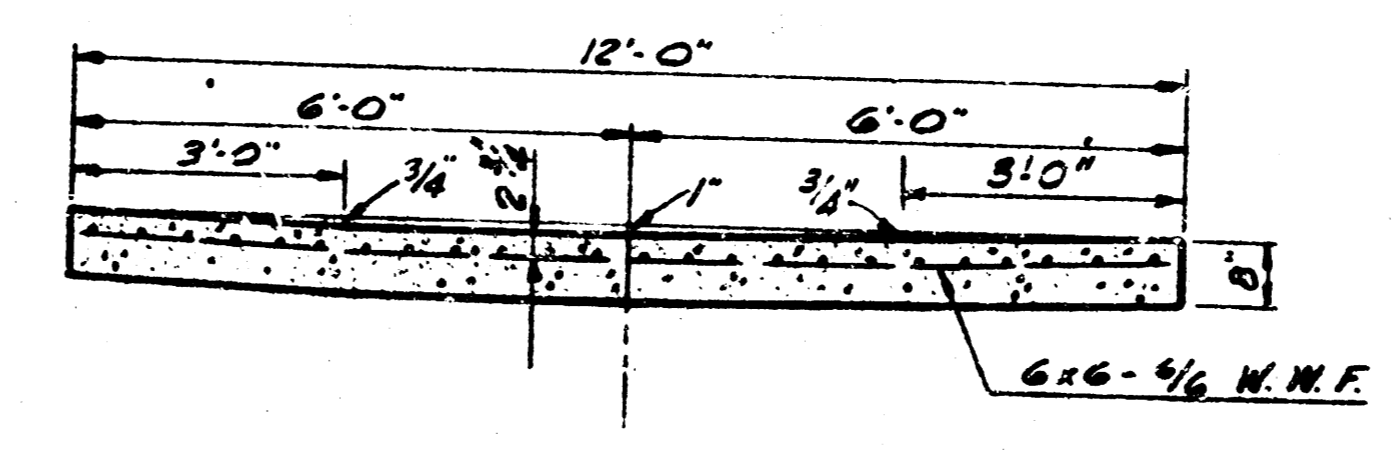
INTERSECTION OF ALL SLOPE LINES SHALL BE SOFTENED AND ROUNDED FOR PLEASING APPEARANCE.



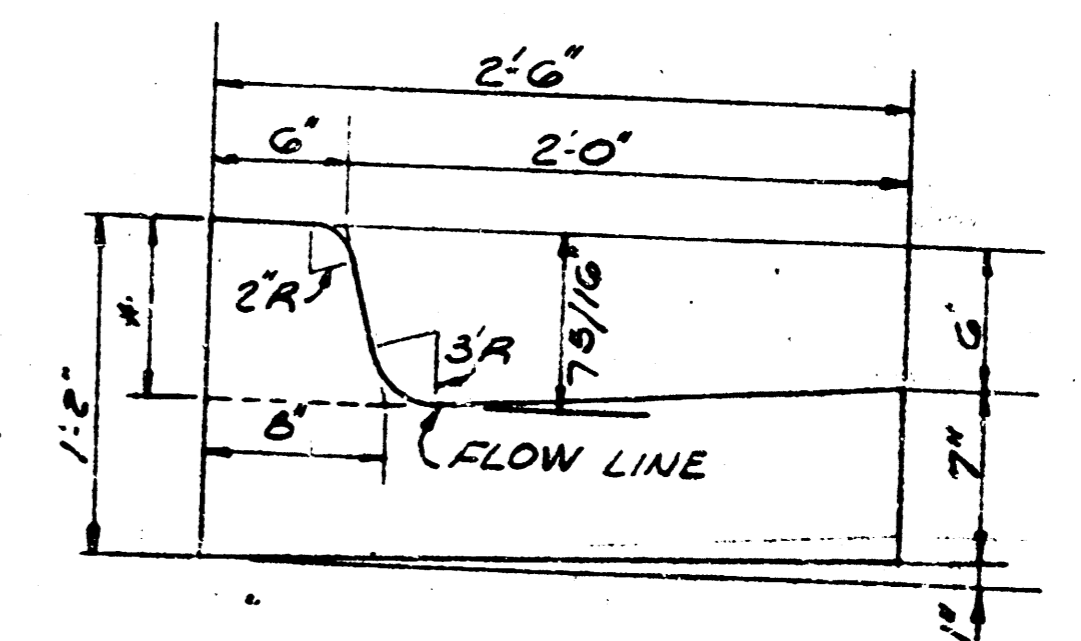
AT END OF SIDEWALK IN INTERSECTIONS OR AT BRIDGE ABUTMENT.



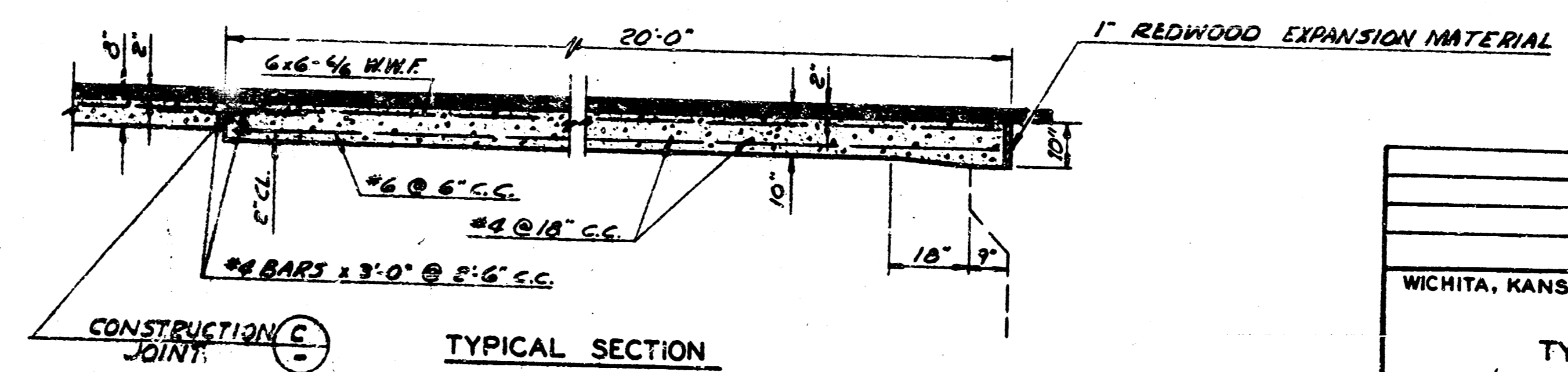
TYPICAL PLAN
8" VALLEY GUTTER
SCALE 1" = 10'



SECTION (G)
SCALE 1/2" = 1'-0"



COMBINED CURB & GUTTER (B)
* VARY TO MEET EXISTING CURB WHERE REQUIRED. LENGTH OF TRANSITION = 3 FEET MIN.



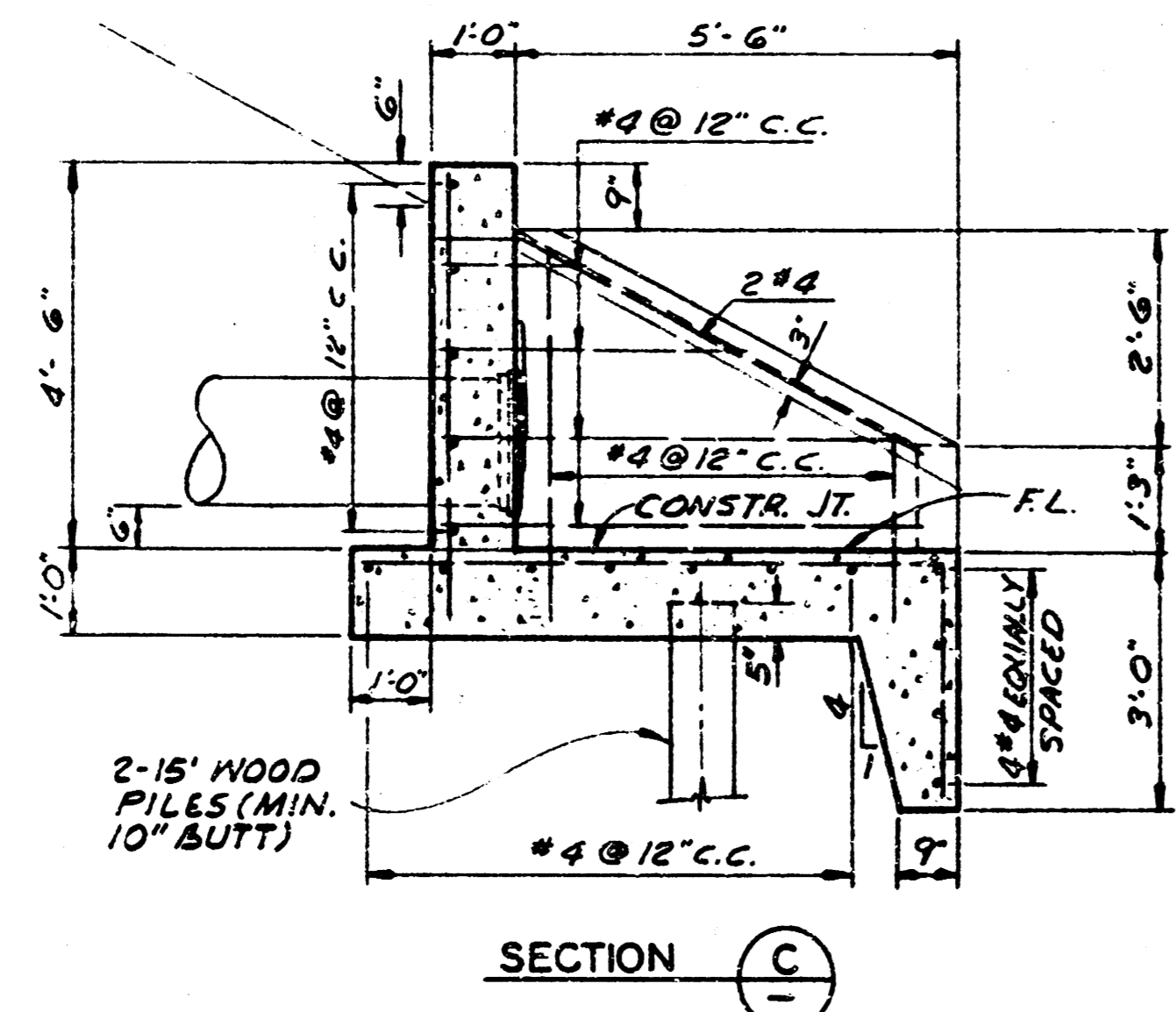
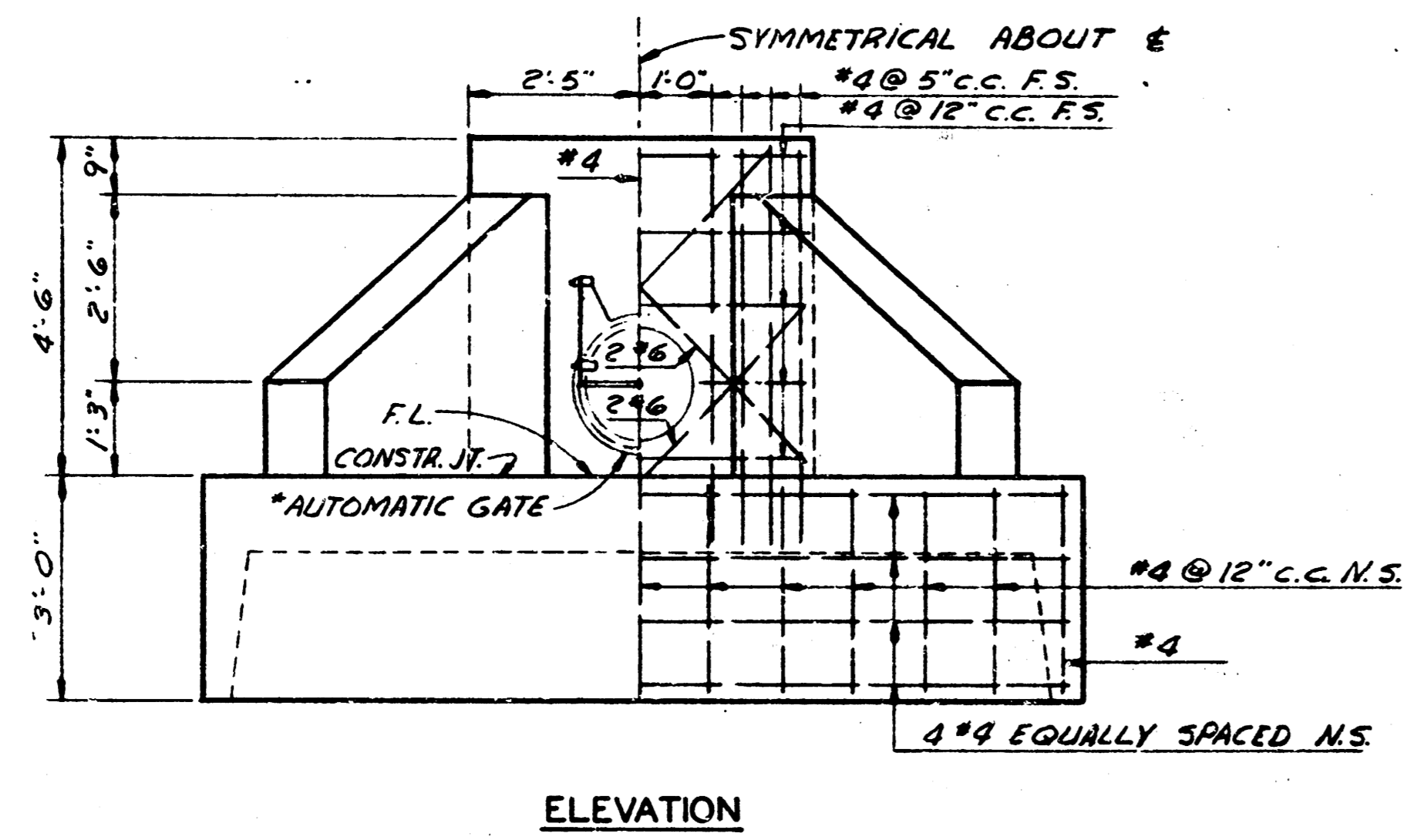
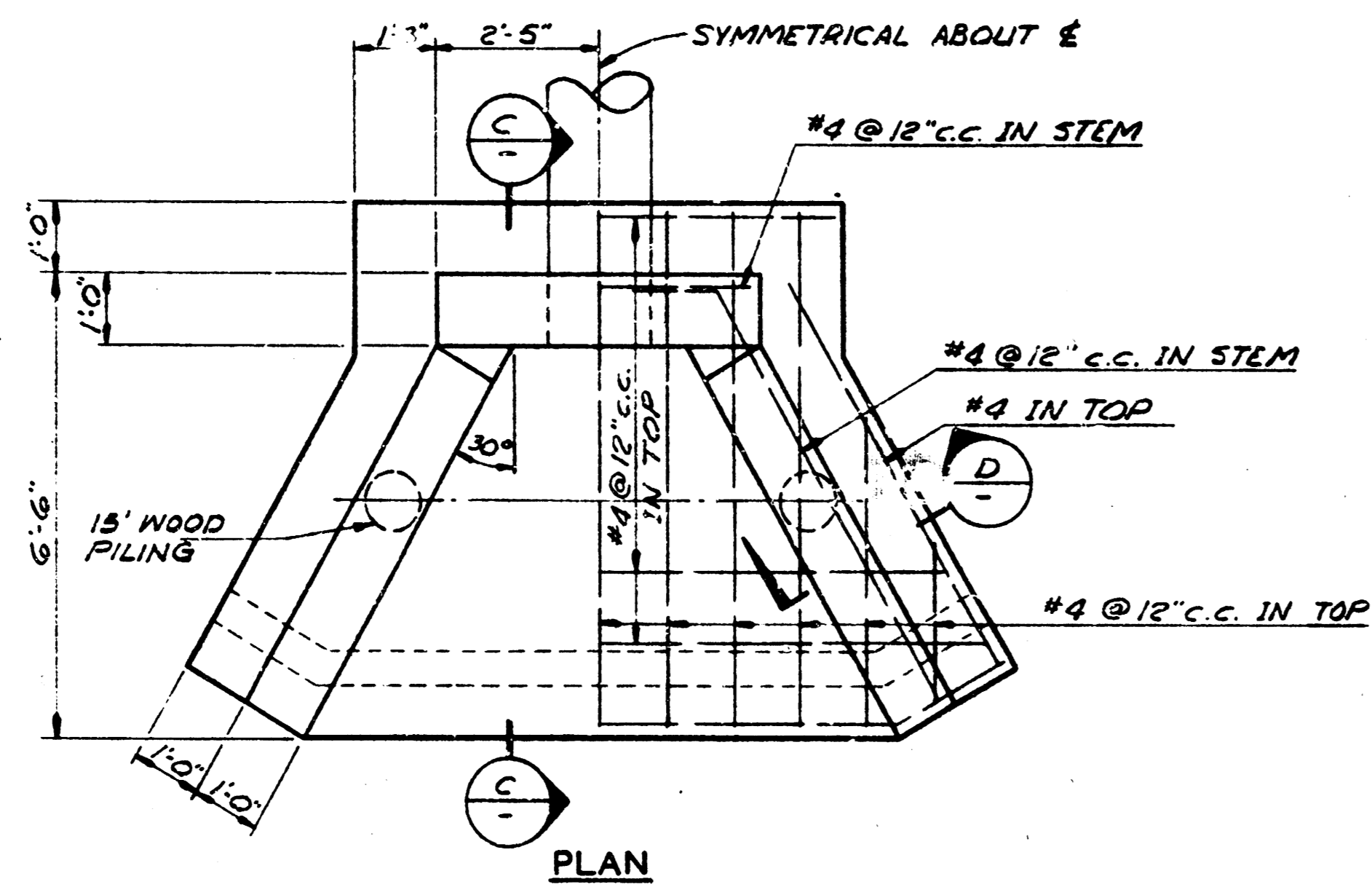
TYPICAL SECTION (E)
SPECIAL BRIDGE APPROACH PAVEMENT
PAID FOR AS 2" SURF COURSE & 6" CONC. BASE
SCALE 1/2" = 1'-0"

REVISION	DATE	BY

WICHITA, KANSAS GREIFFENSTEIN BRIDGE

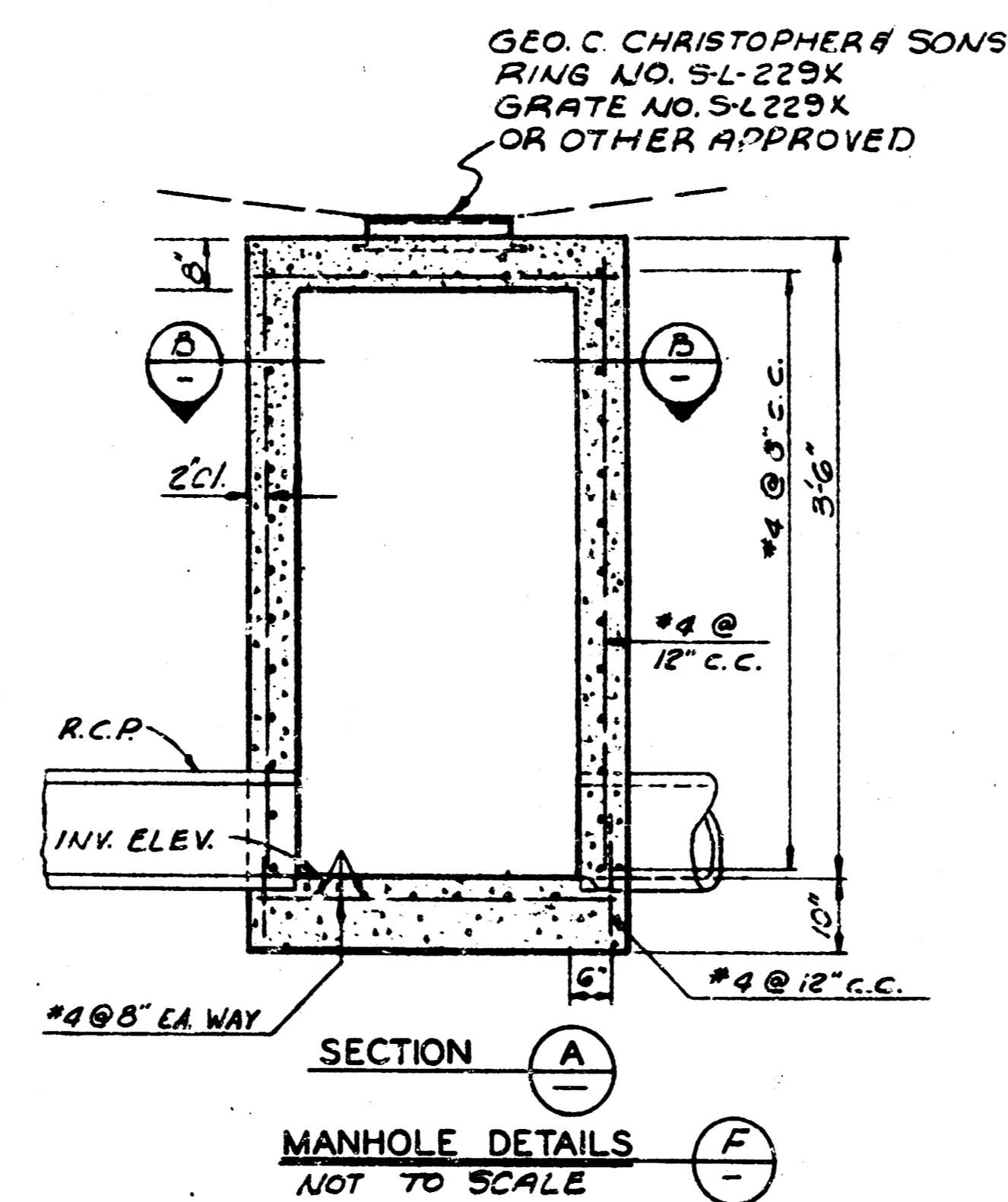
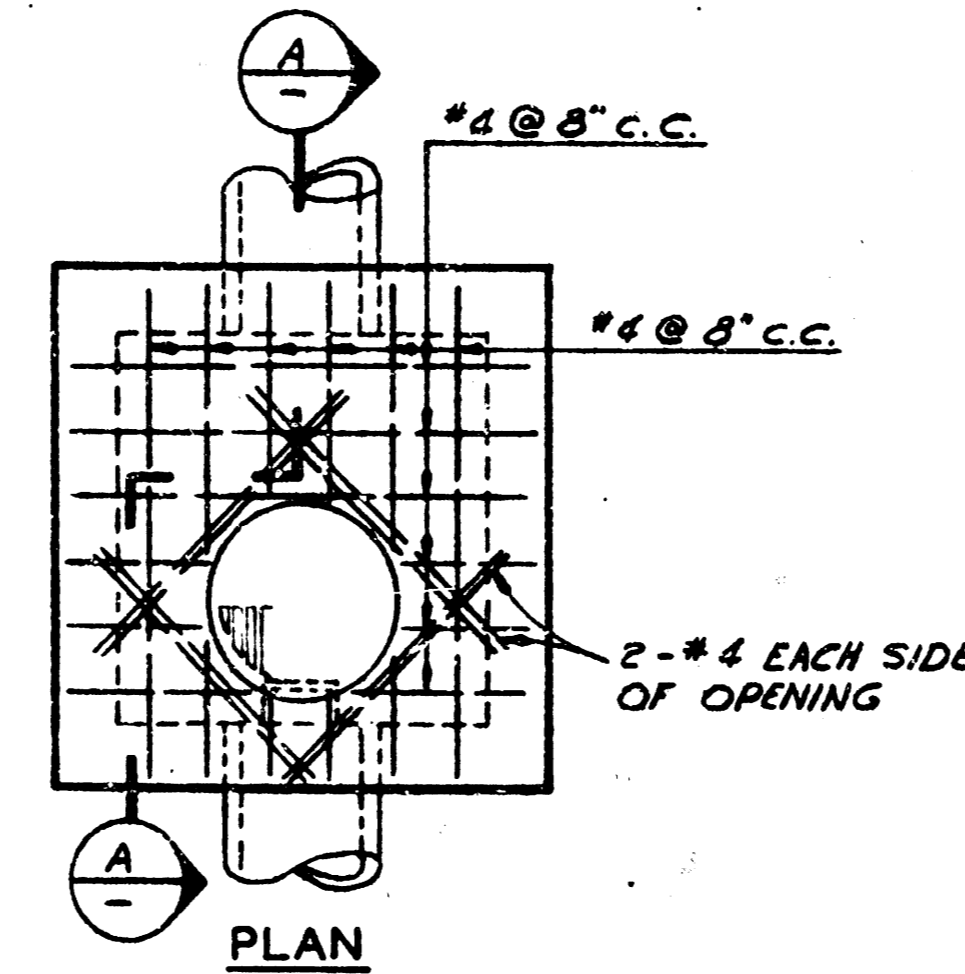
TYPICAL SECTIONS
PART I

WILSON & COMPANY ENGINEERS & ARCHITECTS SALINA - KANSAS	DATE: DEC. 18, 1942 FILE NO. 62-170 SHEET NO. 14 OF 6
---	--

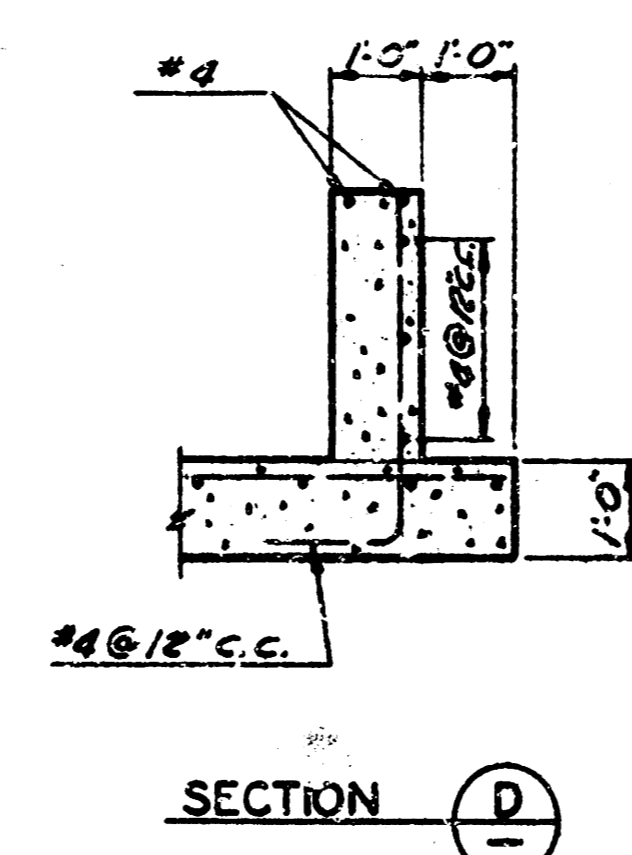


OUTLET HEADWALL FOR *
SCALE: 1/8" = 1'-0"
* 24" RCP @ 15" R.C.P.

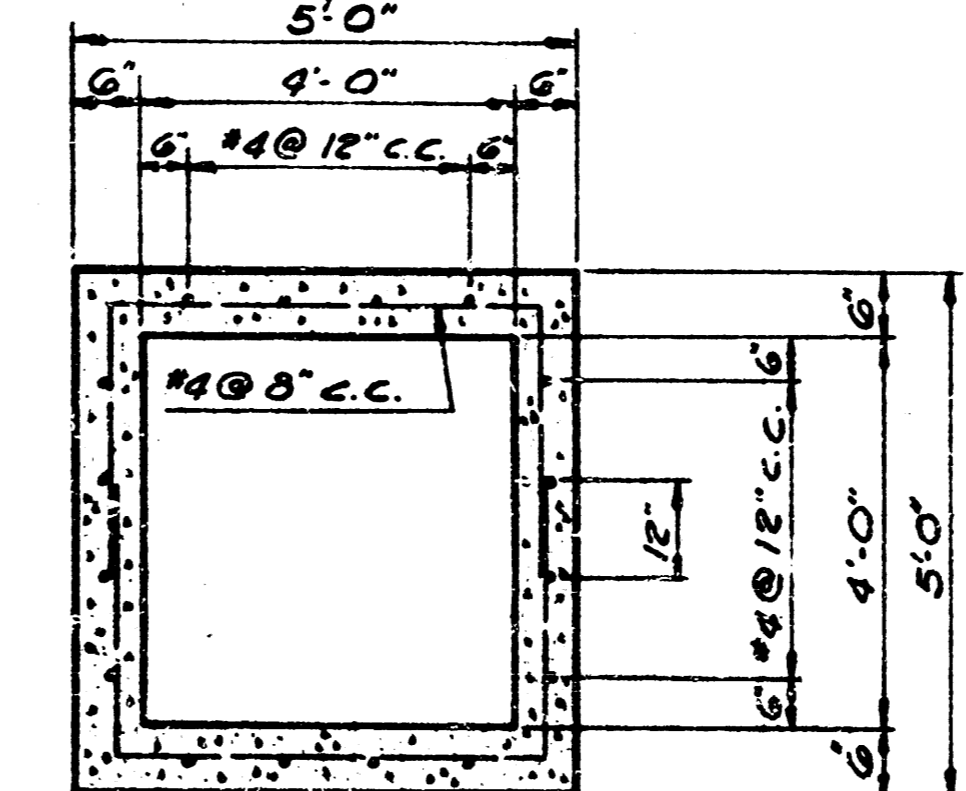
*NOTE: AUTOMATIC GATE TO BE USED ONLY WHEN SPECIFIED ON PLAN SHEET.



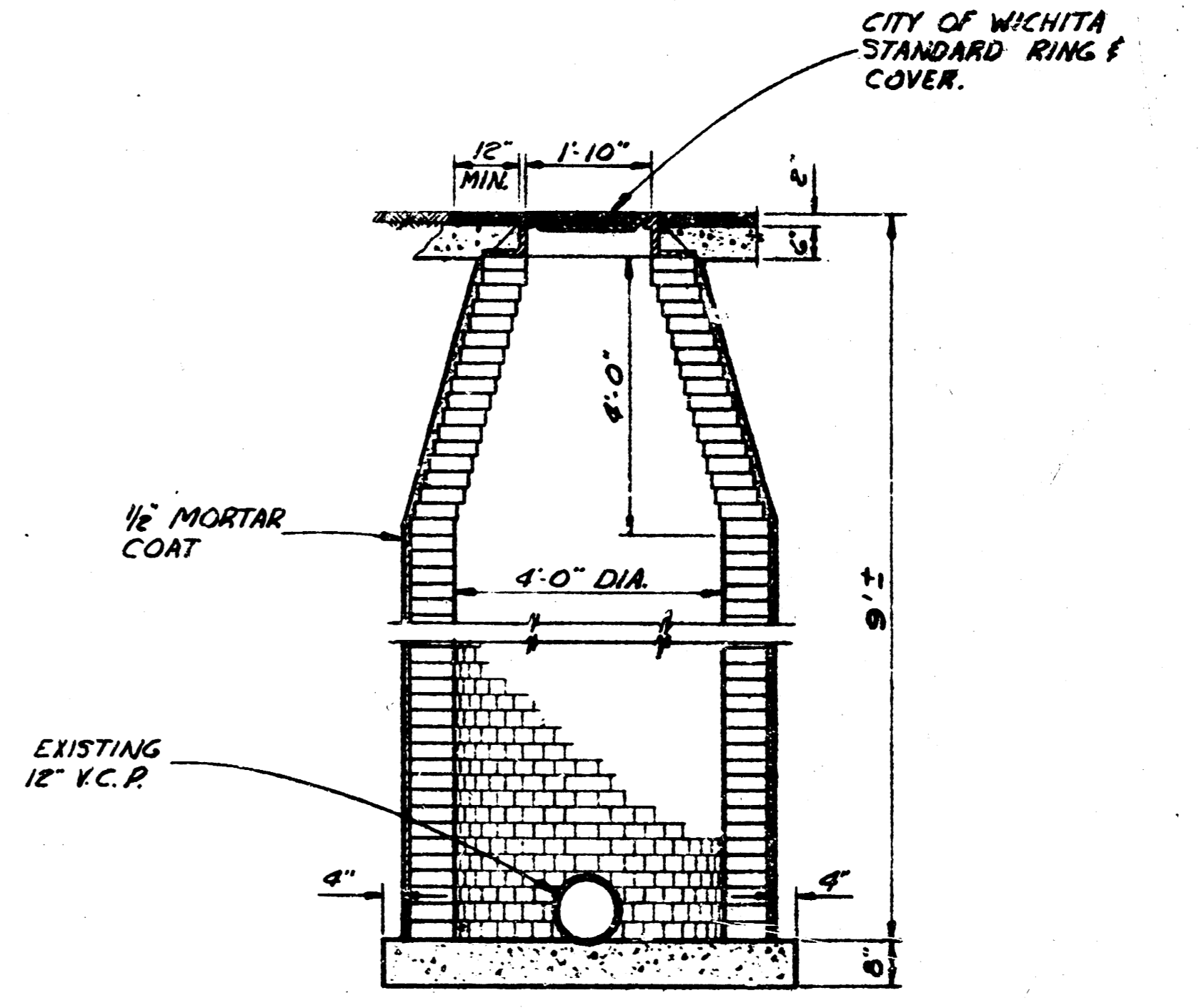
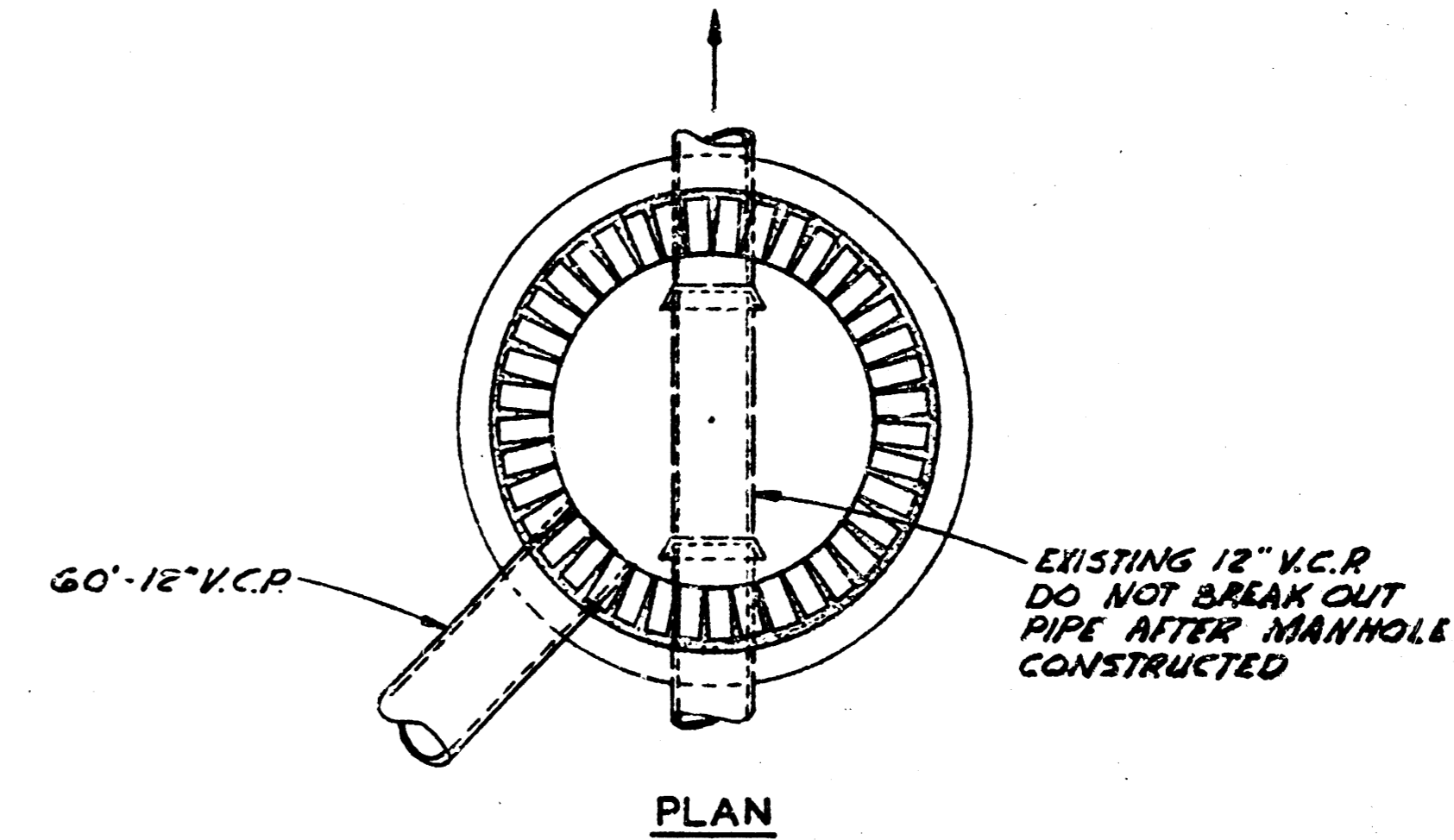
MANHOLE DETAILS
NOT TO SCALE



SECTION D

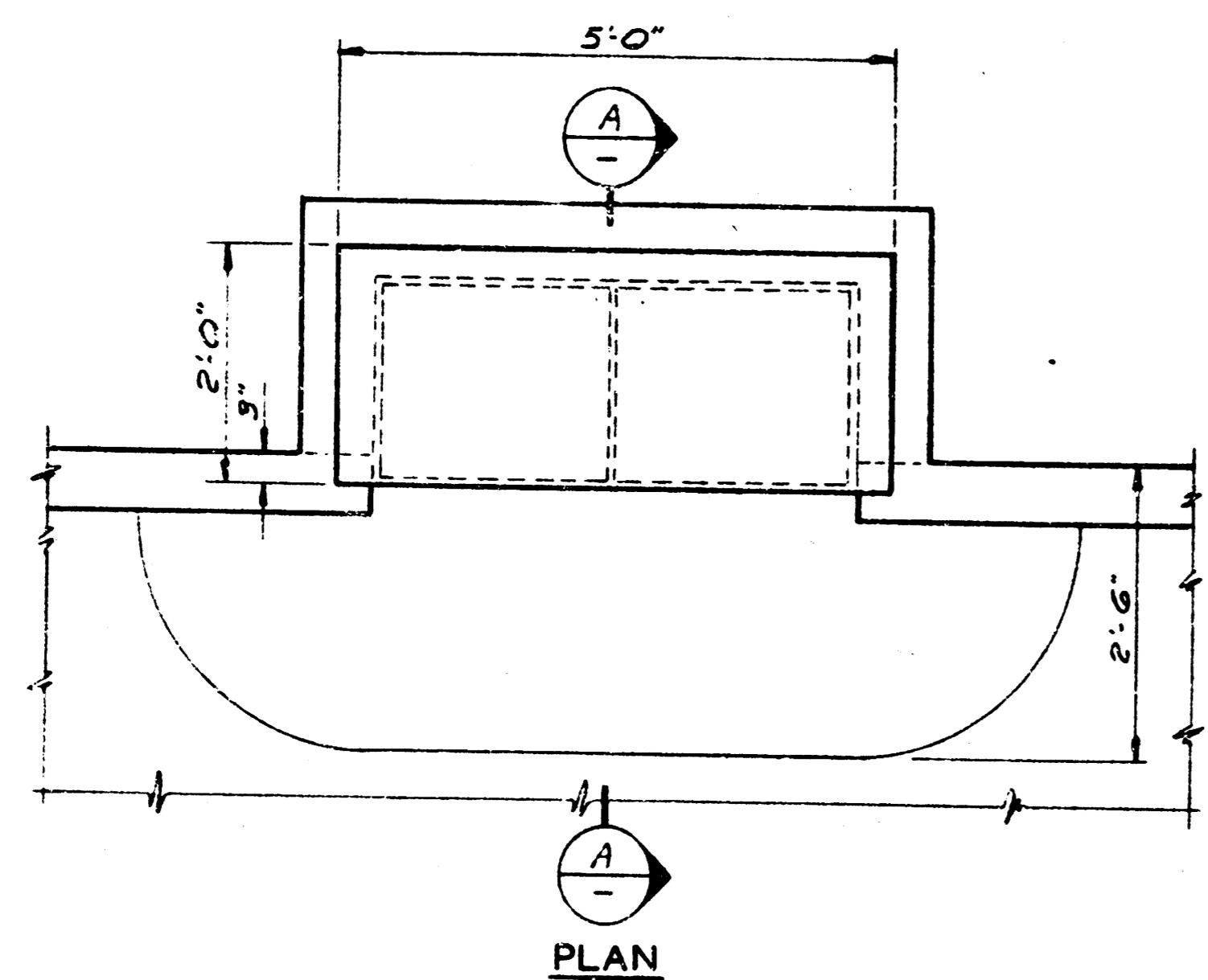


SECTION B

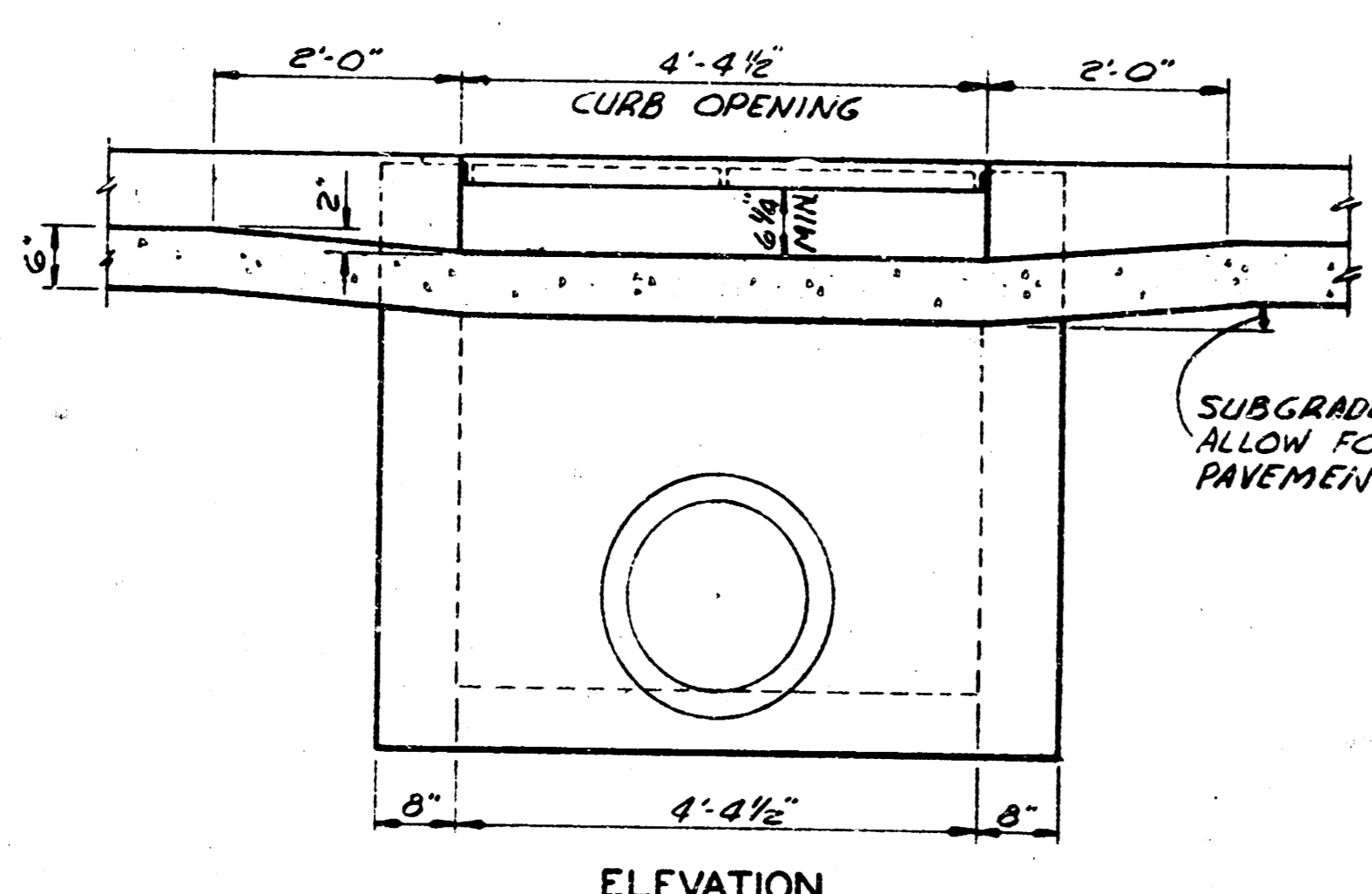


STANDARD THROUGH MANHOLE
SCALE: 1/8" = 1'-0"

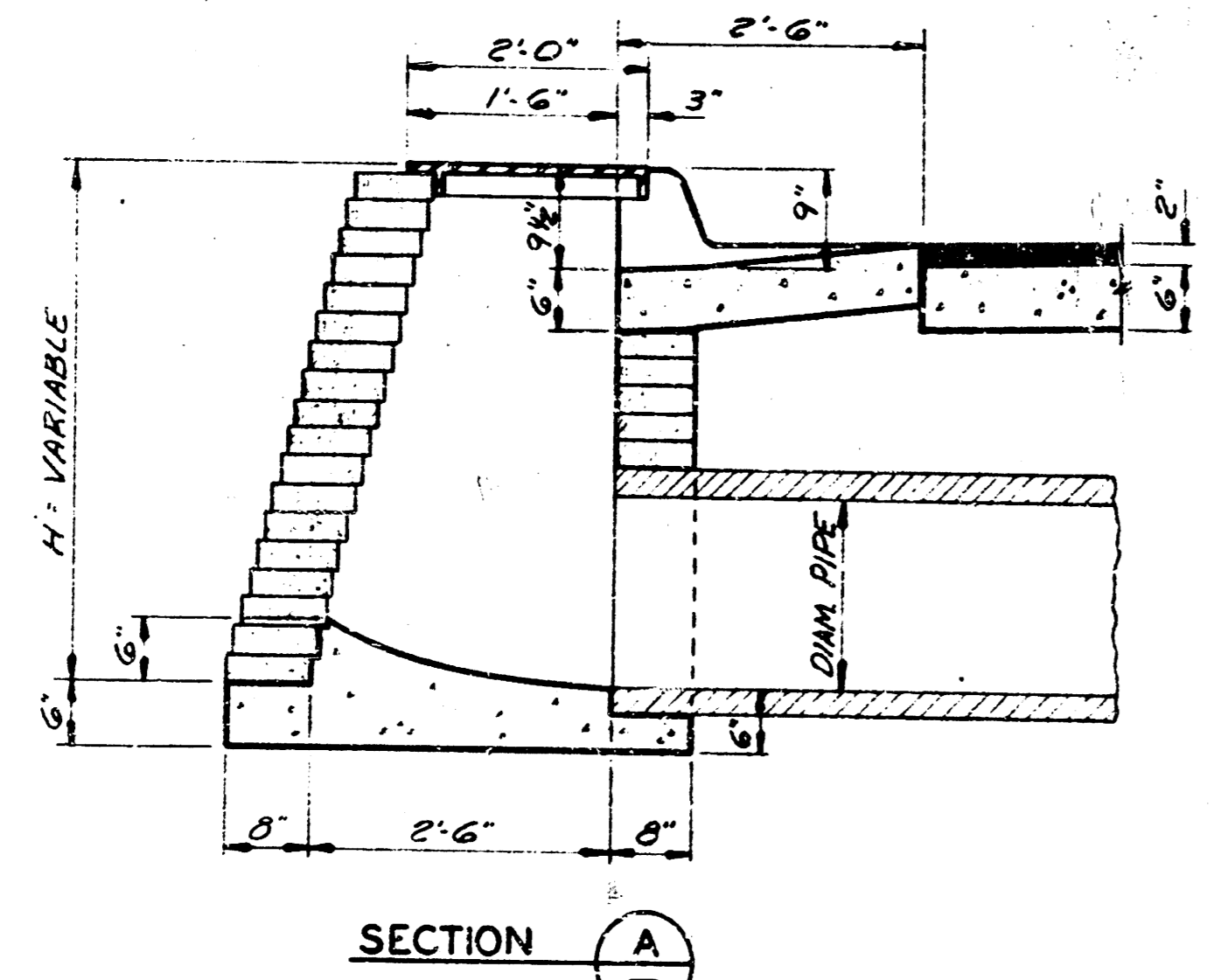
REVISION:	DATE:	BY:
WICHITA, KANSAS	GREIFFENSTEIN BRIDGE	
HEADWALL & MANHOLE DETAILS		
PART I		
WILSON & COMPANY ENGINEERS & ARCHITECTS SALINA - KANSAS	DATE: DEC. 1962 FILE NO. 62-170 SHEET NO. 15 OF 6	



PLAN

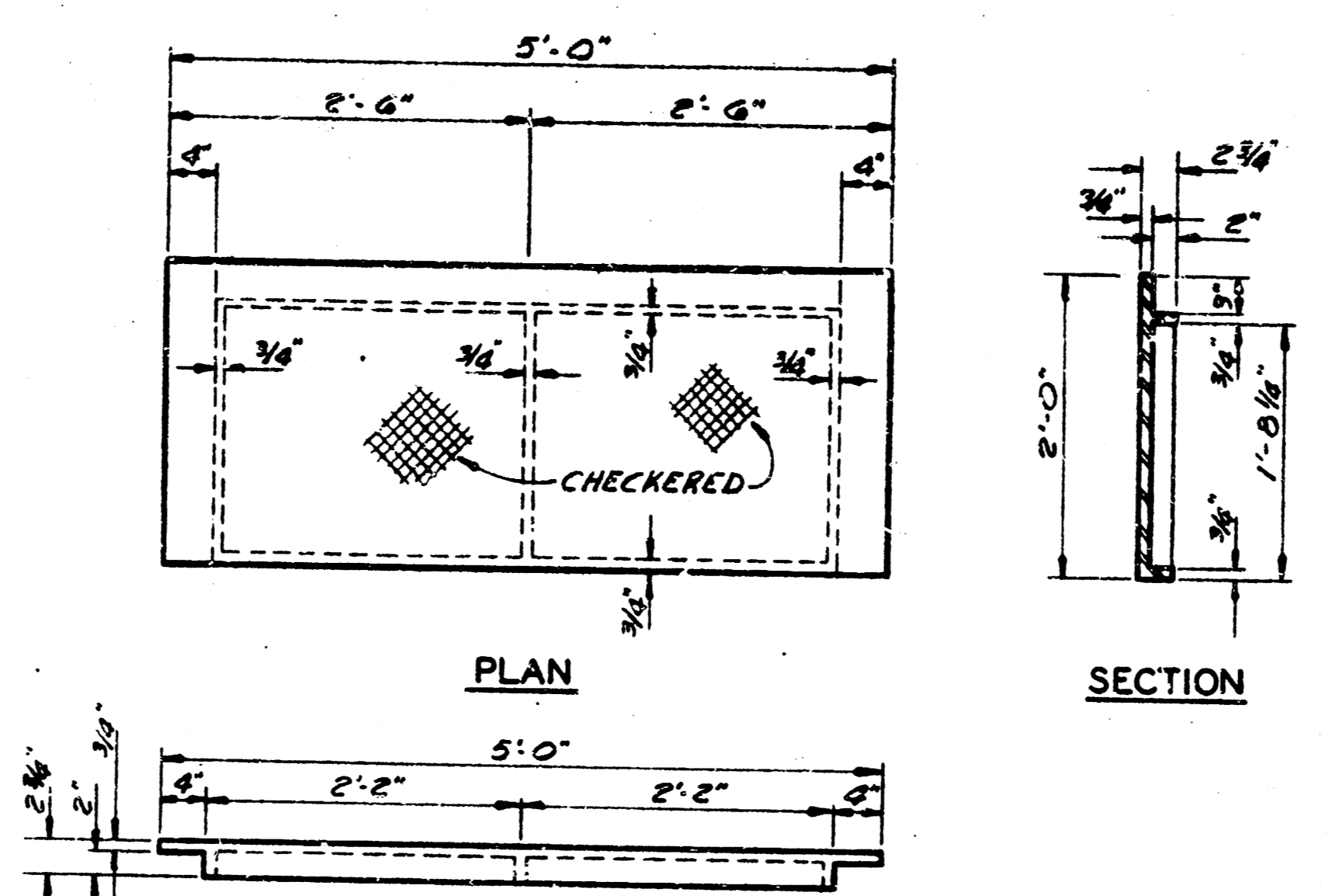


ELEVATION



SECTION A

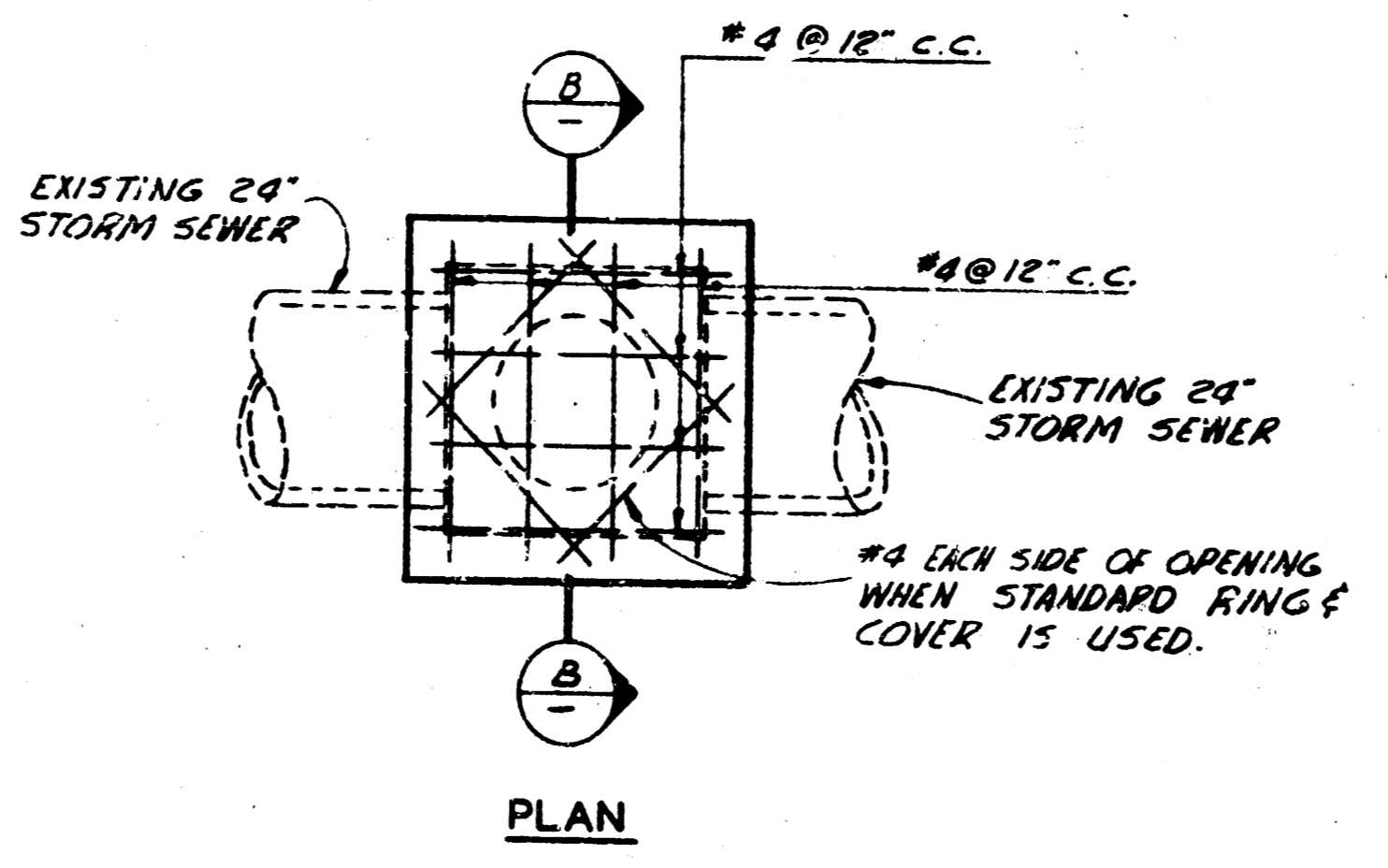
STANDARD CATCH BASIN
SCALE: 3/4" = 1'-0"



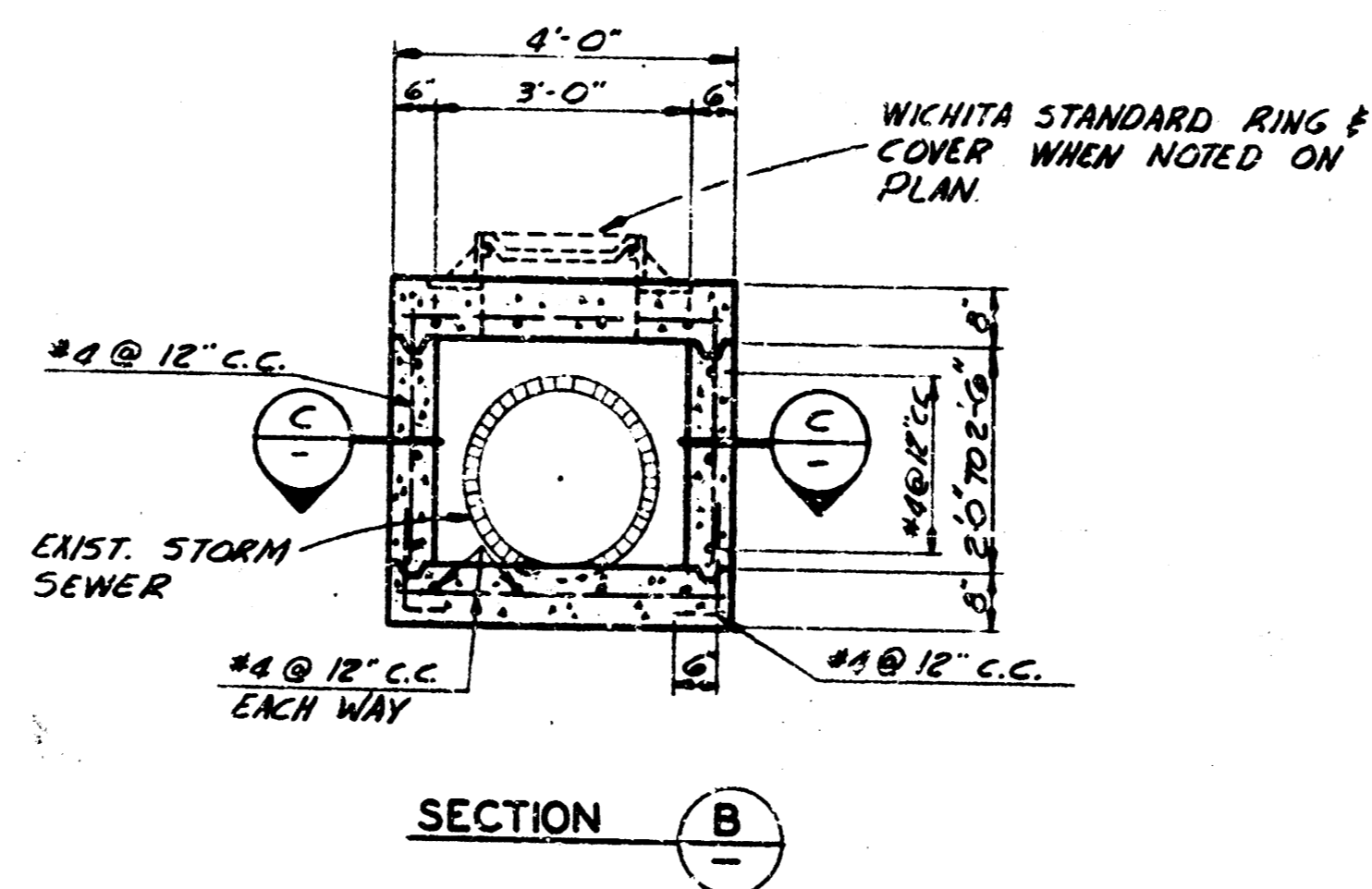
PLAN

SECTION

CITY OF WICHITA CAST IRON INLET COVER
SCALE: 1" = 1'-0"
WEIGHT OF CASTING = 325 LBS.

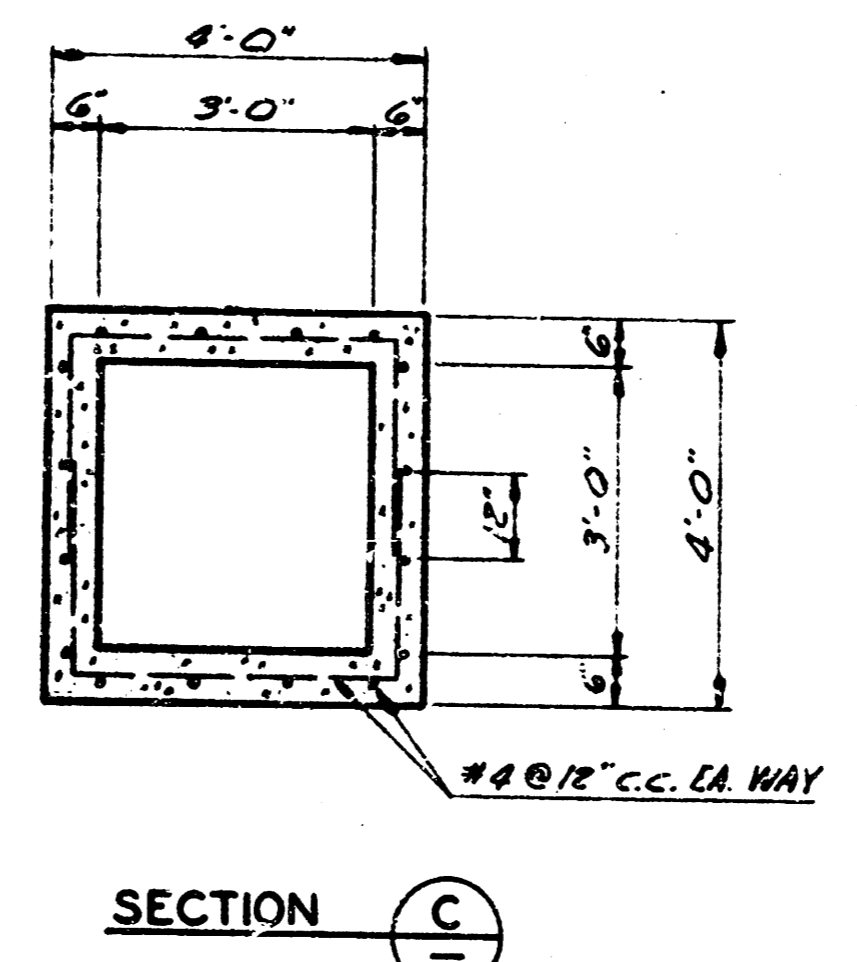


PLAN



SECTION B

JUNCTION BOX DETAILS
SCALE: 1/2" = 1'-0"

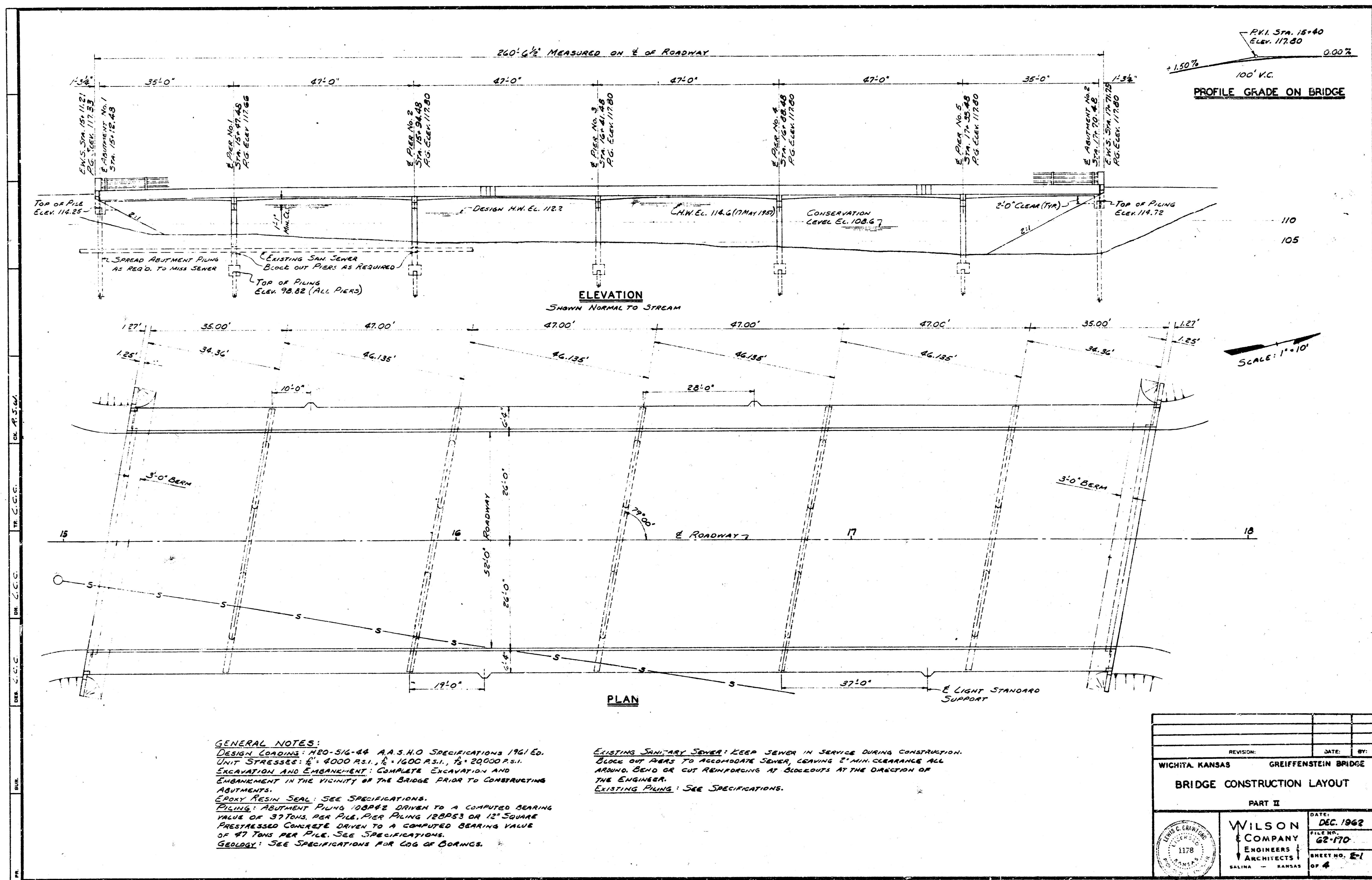


SECTION C

SCHEDULE OF STRUCTURES					
STATION	SIDE	TYPE	TOP EL.	INV. F.T.	H.
17+69	LT.	HW	-	103.00	-
18+05	LT.	JB	-	107.48	-
20+63	LT.	MH	112.39	108.64	3.60
20+97	LT.	CB	113.51	108.76	4.25
21+00	RT.	CB	113.07	108.57	3.60
21+38	LT.	CB	113.16	109.56	3.60
23+00	LT.	JB	113.88	110.27	3.56
23+03	RT.	JB	-	110.55	3.00
*2+90	RT.	CB	117.66	113.66	4.00
*2+90	RT.	HW	-	105.00	-

* INTERSECTION OF NINTH ST. & PARK DRIVES
(ADD ALTERNATE NO. 2)

REVISION:	DATE:	BY:
WICHITA, KANSAS	GREIFFENSTEIN BRIDGE	
DRAINAGE DETAILS		
PART I		
WILSON & COMPANY ENGINEERS & ARCHITECTS SALINA - KANSAS	DATE: DEC. 1962 FILE NO. 62-170 SHEET NO. 1-6 OF 6	

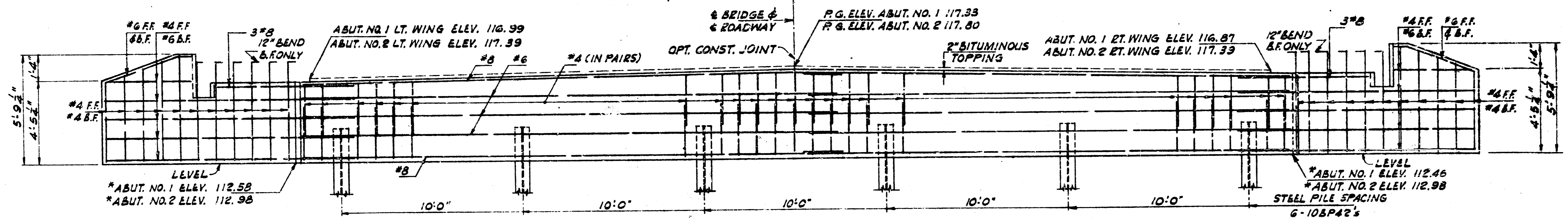


GENERAL NOTES:
 DESIGN LOADINGS: AASHTO 1961 Ed. A.A.S.H.O. SPECIFICATIONS 1961 Ed.
 UNIT STRESSES: 4000 P.S.I., 1500 P.S.I., 20000 P.S.I.
 EXCAVATION AND EMBANKMENT: COMPLETE EXCAVATION AND EMBANKMENT IN THE VICINITY OF THE BRIDGE PRIOR TO CONSTRUCTING ABUTMENTS.
 EPOXY RESIN SEAL: SEE SPECIFICATIONS.
 PILING: ABUTMENT PILING 100P&E DRIVEN TO A COMPUTED BEARING VALUE OF 37 TONS PER PILE. PIER PILING 12BP&S OR 12" SQUARE PRESTRESSED CONCRETE DRIVEN TO A COMPUTED BEARING VALUE OF 47 TONS PER PILE. SEE SPECIFICATIONS.
 GEOLOGY: SEE SPECIFICATIONS FOR COG OF BORINGS.

EXISTING SANITARY SEWER: KEEP SEWER IN SERVICE DURING CONSTRUCTION. BLOCK OUT PIERS TO ACCOMMODATE SEWER, LEAVING 2" MIN. CLEARANCE ALL AROUND. BEND OR CUT REINFORCING AT BLOCOUTS AT THE DIRECTION OF THE ENGINEER.
 EXISTING PILING: SEE SPECIFICATIONS.

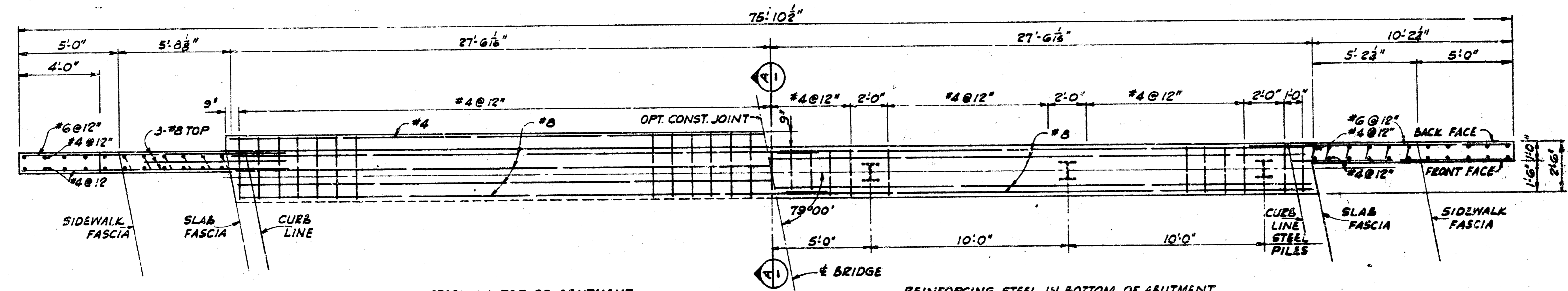
REVISION:	DATE:	BY:
WICHITA, KANSAS GREIFFENSTEIN BRIDGE		
BRIDGE CONSTRUCTION LAYOUT		
PART II		
DATE:	DEC. 1962	
FILE NO.:	62-170	
ENGINEERS	ARCHITECTS	
SHEET NO. 2-1	OF 4	

NOTE:
ALL ROADWAY ELEVATIONS
GIVEN ARE TO TOP OF FINISHED
ROADWAY AT E.W.S.



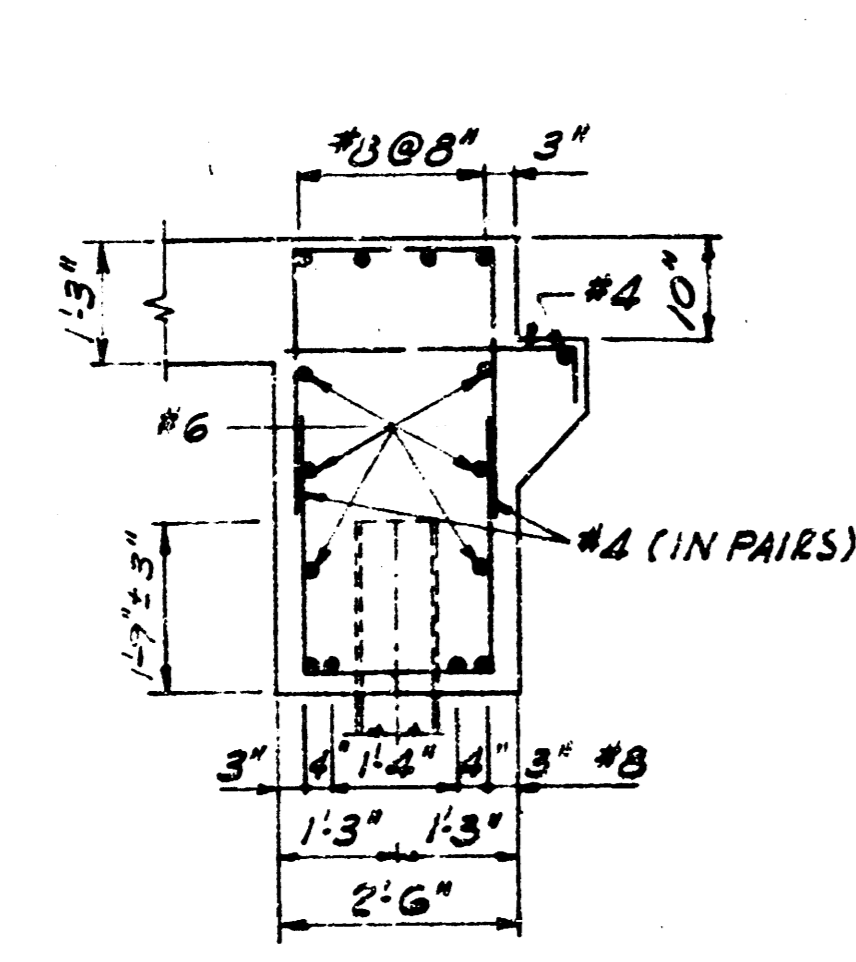
* BOTTOM OF ABUTMENT ELEVATIONS.

ELEVATION OF ABUTMENT
LOOKING UP STATION

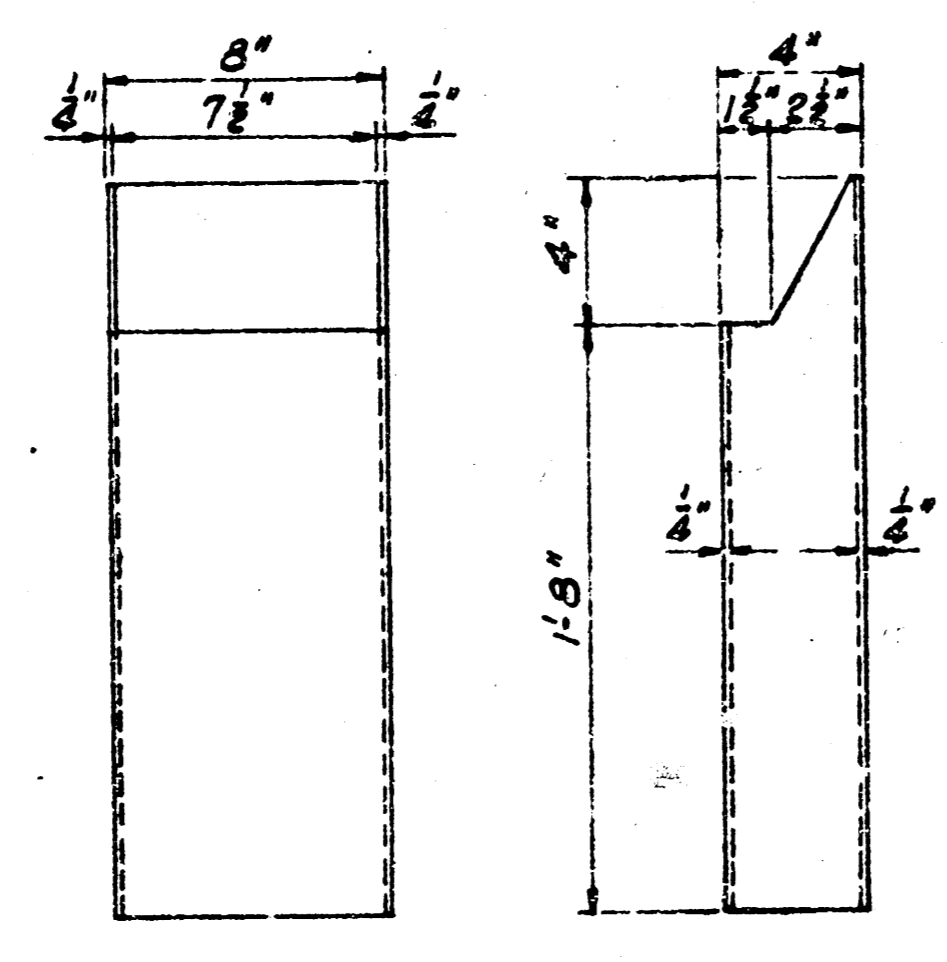


REINFORCING STEEL IN TOP OF ABUTMENT

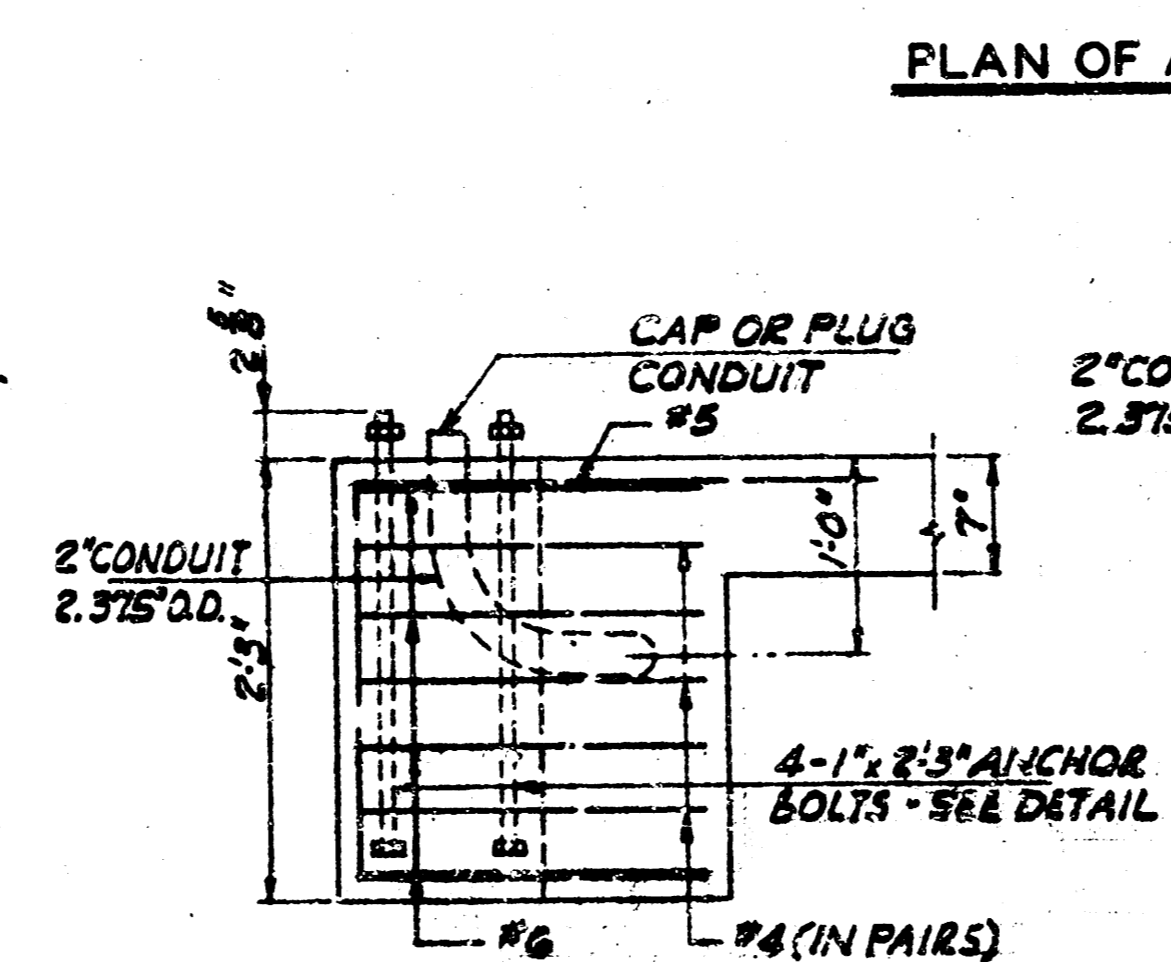
REINFORCING STEEL IN BOTTOM OF ABUTMENT



SECTION A

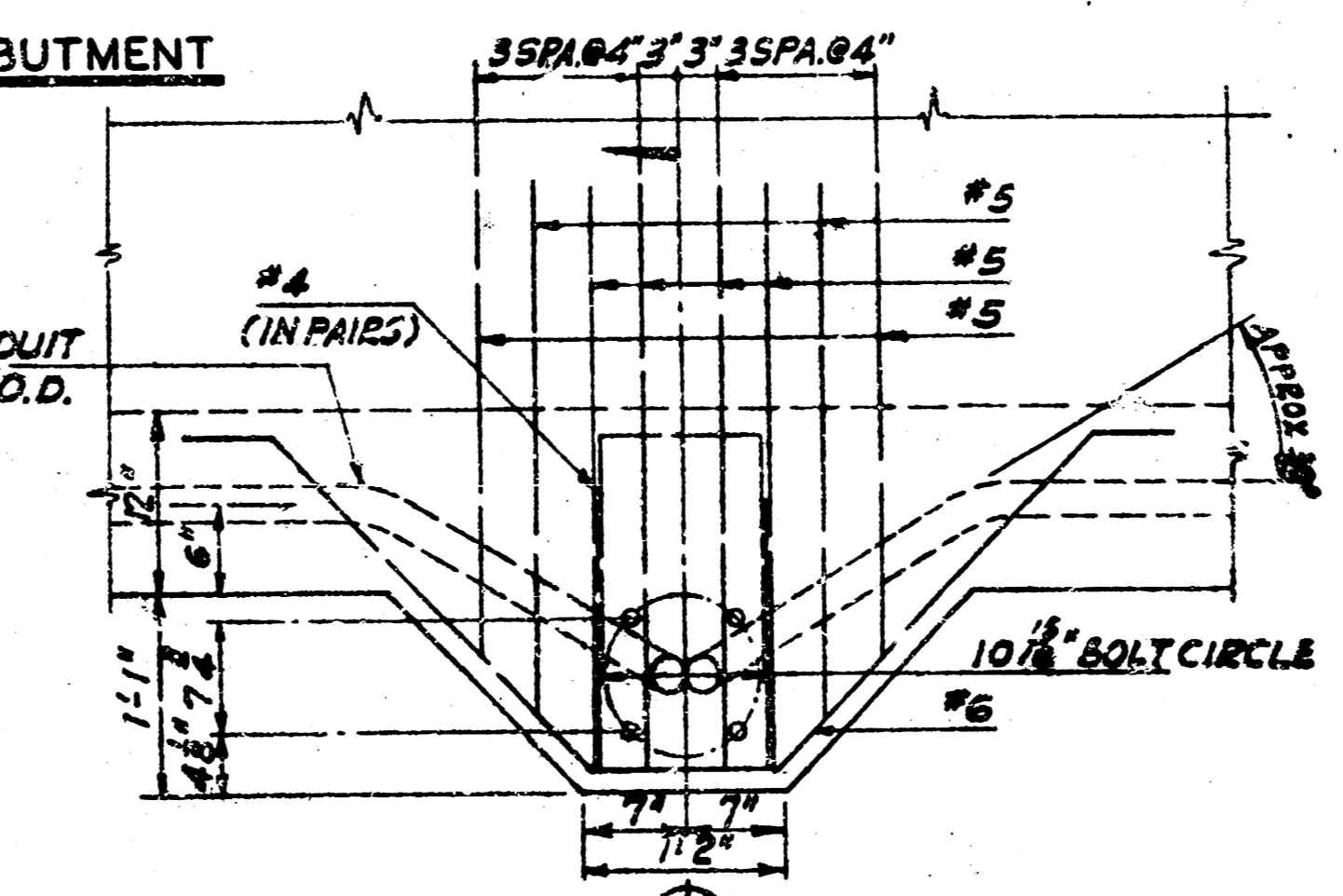


CAST IRON DRAIN DETAIL

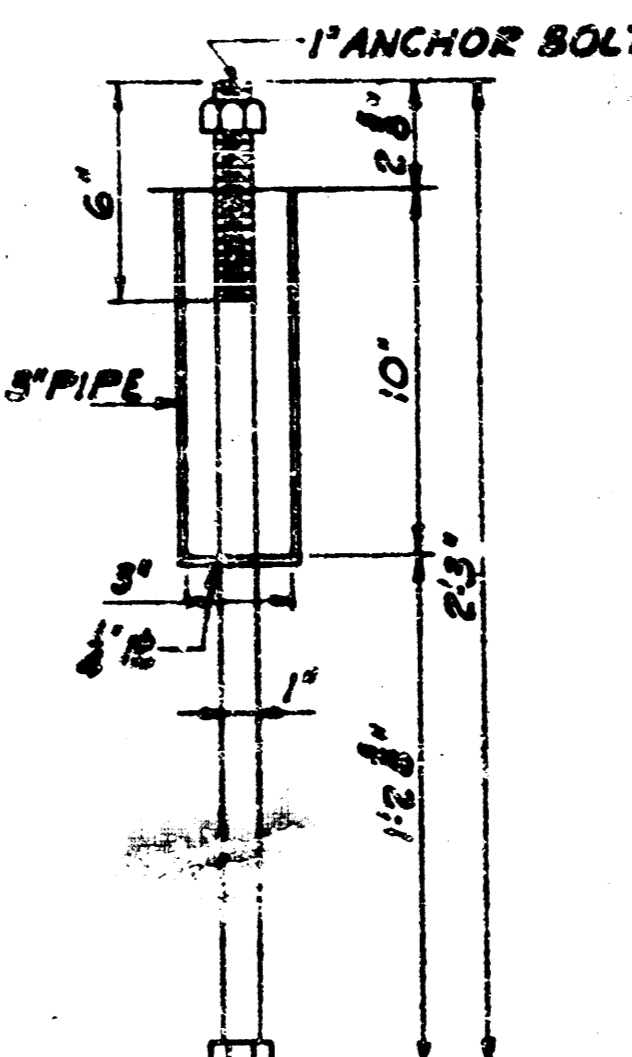


SECTION B

PLAN OF ABUTMENT




PLAN



ANCHOR BOLT DETAIL

LIGHT STANDARD SUPPORT DETAIL

REVISION:	DATE:	BY:
WICHITA, KANSAS	GREIFFENSTEIN BRIDGE	
ABUTMENT & MISCELLANEOUS DETAILS		
PART II		
	WILSON & COMPANY ENGINEERS ARCHITECTS SALINA - KANSAS	DATE: DEC. 1962 FILE NO: 62-170 SHEET NO. 25 OF 4

