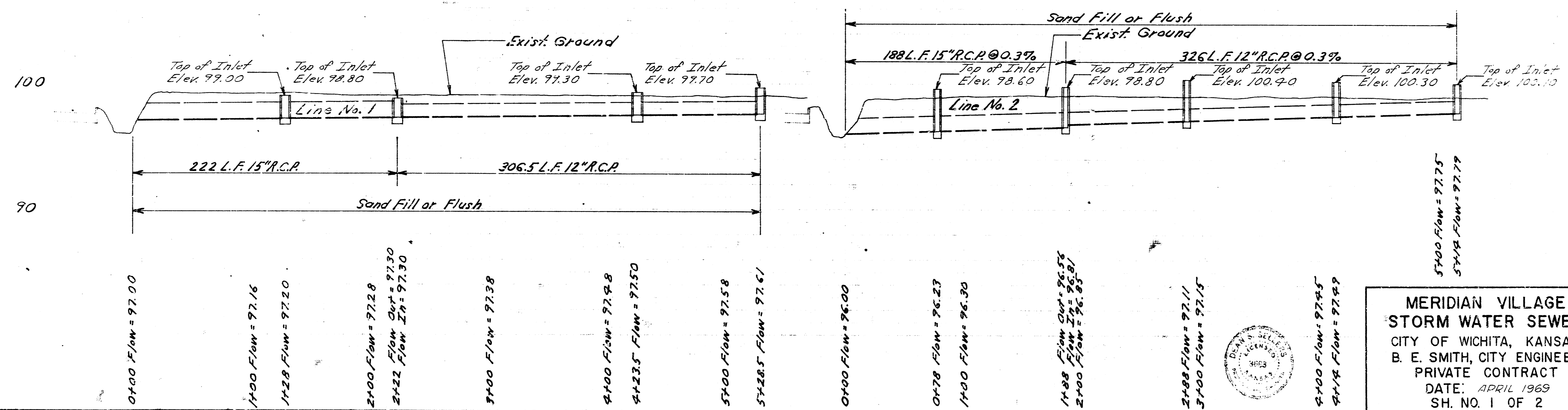
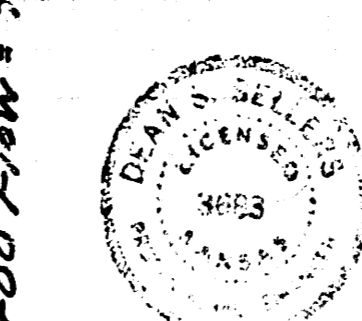
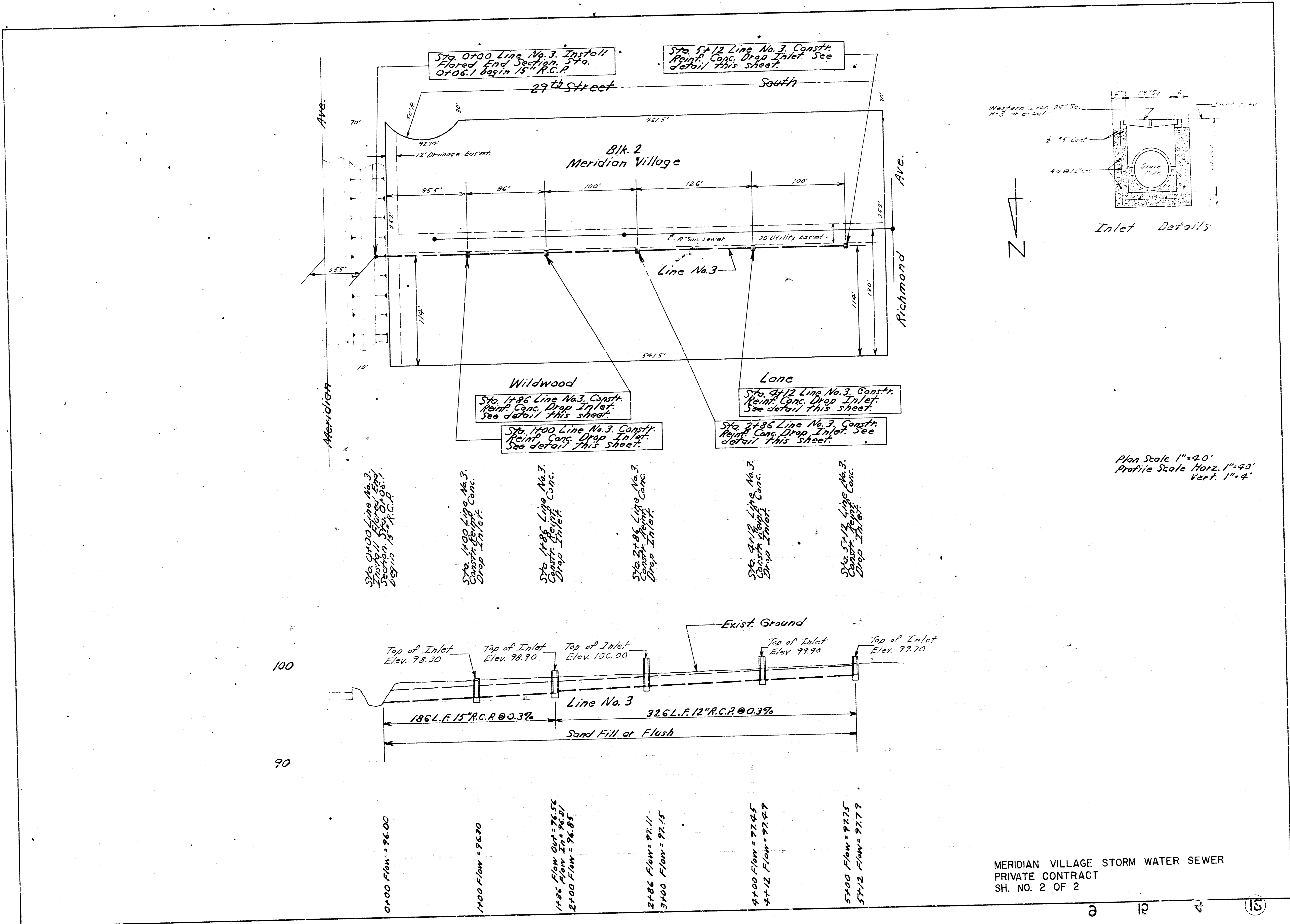


NOTE TO CONTRACTOR
 This project will be constructed under the supervision of the CITY ENGINEER and conforming to the SPECIFICATIONS of the CITY OF WICHITA. The CONTRACTOR will reimburse the City for all costs of all or any part of the project.

Plan Scale 1"=40'
 Profile Scale 1/2"=40'
 Vert 1"=4'

MERIDIAN VILLAGE
STORM WATER SEWER
 CITY OF WICHITA, KANSAS
 B. E. SMITH, CITY ENGINEER
 PRIVATE CONTRACT
 DATE: APRIL 1969
 SH. NO. 1 OF 2





Sta. 0+00 Line No. 3. Install Flood End Section. Sta. 0+06.1 begin 15" R.C.P.

Sta. 5+12 Line No. 3. Constr. Reinf. Conc. Drop Inlet. See detail this sheet.

Blk. 2 Meridian Village

Wildwood Lane

Lane

Sta. 1+00 Line No. 3. Constr. Reinf. Conc. Drop Inlet. See detail this sheet.

Sta. 4+12 Line No. 3. Constr. Reinf. Conc. Drop Inlet. See detail this sheet.

Sta. 1+86 Line No. 3. Constr. Reinf. Conc. Drop Inlet. See detail this sheet.

Sta. 2+86 Line No. 3. Constr. Reinf. Conc. Drop Inlet. See detail this sheet.

Sta. 0+00 Line No. 3. Constr. Reinf. Conc. Drop Inlet. See detail this sheet.

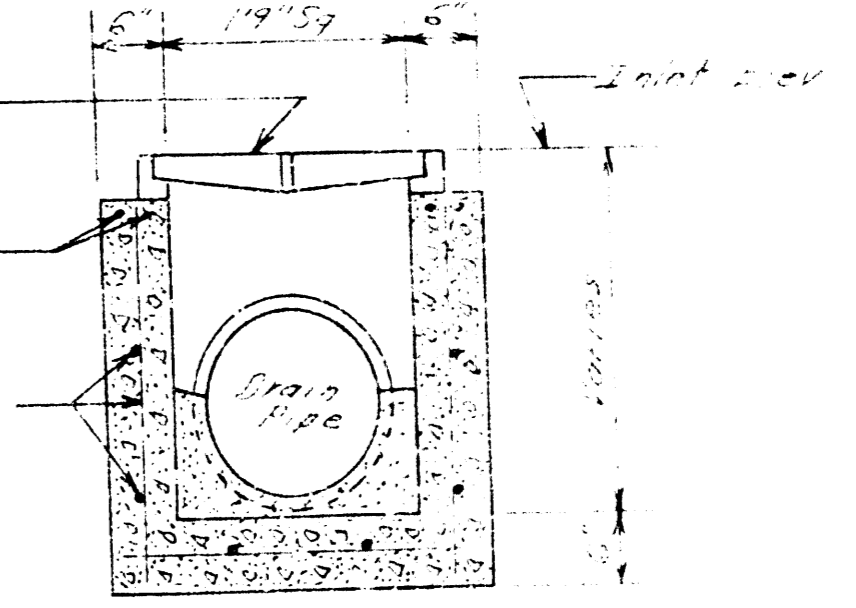
Sta. 1+00 Line No. 3. Constr. Reinf. Conc. Drop Inlet. See detail this sheet.

Sta. 1+86 Line No. 3. Constr. Reinf. Conc. Drop Inlet. See detail this sheet.

Sta. 2+00 Line No. 3. Constr. Reinf. Conc. Drop Inlet. See detail this sheet.

Sta. 2+86 Line No. 3. Constr. Reinf. Conc. Drop Inlet. See detail this sheet.

Sta. 5+12 Line No. 3. Constr. Reinf. Conc. Drop Inlet. See detail this sheet.



Inlet Details

Plan Scale 1"=40'
Profile Scale Horiz. 1"=40'
Vert. 1"=4'

MERIDIAN VILLAGE STORM WATER SEWER
PRIVATE CONTRACT
SH. NO. 2 OF 2