

SCALE: 1"=50'

Remove & Reset 140'± Exist. Fence. Install Additional 20' New Fence.
 # Sta. 47+18-81' Lt. Remove 140'± Exist. Conc. Flume Extend to 45' Lt. (42 Sq. Yds. Conc. Ditch Lining) See Sh. No. 20
 # Sta. 49+66 Remove Exist. Manhole 25' Rt. # Exist. 18"x350' V.C.P. (N.E.) * # Exist. 18"x425' V.C.P. (S.W.) * See Note this Sheet

Sta. 49+88 Remove Exist. Manhole 34.30' Rt. # Exist. 36"x347' V.C.P. (N.E.) * # Exist. 36"x228' V.C.P. (S.W.) See Note this Sheet

Sta. 52+09 Remove Exist. Manhole 25.07' Lt. # Exist. 42"x193' R.C.P. (S.W.) See Note this Sheet

Sta. 53+79 Abandon Exist. Manhole 80.23' Lt. # Remove Exist. 18"x62' V.C.P. * San. Sewer (W.N.W.)

Sta. 54+03 Remove Exist. Manhole 22.67' Lt. # Exist. 42"x300' R.C.P. (S.W.) # Exist. 18"x28' V.C.P. (N.W.) See Note this Sheet

Sta. 54+13 Remove Exist. Manhole 4.33' Rt. # Exist. 18"x300' V.C.P. (S.W.) * # Exist. 42"x222' R.C.P. * San. Sewer (W.S.W.) See Note this Sheet

Sta. 57+01 Abandon Exist. Manhole 18.53' Lt. # Exist. 42"x222' R.C.P. * San. Sewer (W.S.W.)

Sta. 57+12 Abandon Exist. Manhole 4.85' Rt. # Remove Exist. 18"x185' V.C.P. * San. Sewer (W.S.W.)

Sta. 58+94.42 Const. Conc. Manhole (Spec.) 90.0' Rt. Connect to Exist. 42" R.C.P. San. Sewer (W.S.W.) See Sh. No. 16, 17, & 18

Sta. 46+27.98 Const. Manhole (Type A) 115.00' Rt. Connect to Exist. 18" V.C.P. (N.N.E.) Install 18"x18" V.C.P. San. Sewer (W) See Sh. No. 16 & 17

Sta. 46+47.94 Const. Concrete Manhole 125.00' Rt. Connect to 18" V.C.P. # Exist. 36" V.C.P. (N.N.E.) Install 48"x296' PLR.C.P. San. Sewer (S.W.) # 8" V.C.P. Stub (W.) Remove Exist. Manhole # 36"x4" V.C.P. (S.S.W.) See Sh. No. 16 & 17

Sta. 44+32 Const. 56'-70"-56' Cont. Steel Beam Spans Skew 33° 28' 00" Pile Bent Type Abutments # Pedestal Type Piers 18'-0" Roadway with 5'-0" Sidewalk Lt. & Rt.

Sta. 49+80.00 Const. Conc. Manhole 95.00' Rt. Install 48"x296' PLR.C.P. San. Sewer (S.W.) # 8" V.C.P. Stub (W.N.W.) See Sh. No. 16 & 17

Sta. 52+80.00 Const. Conc. Manhole 95.00' Rt. Install 48"x296' PLR.C.P. San. Sewer (S.W.) # 8" V.C.P. Stub (W) See Sh. No. 16 & 17

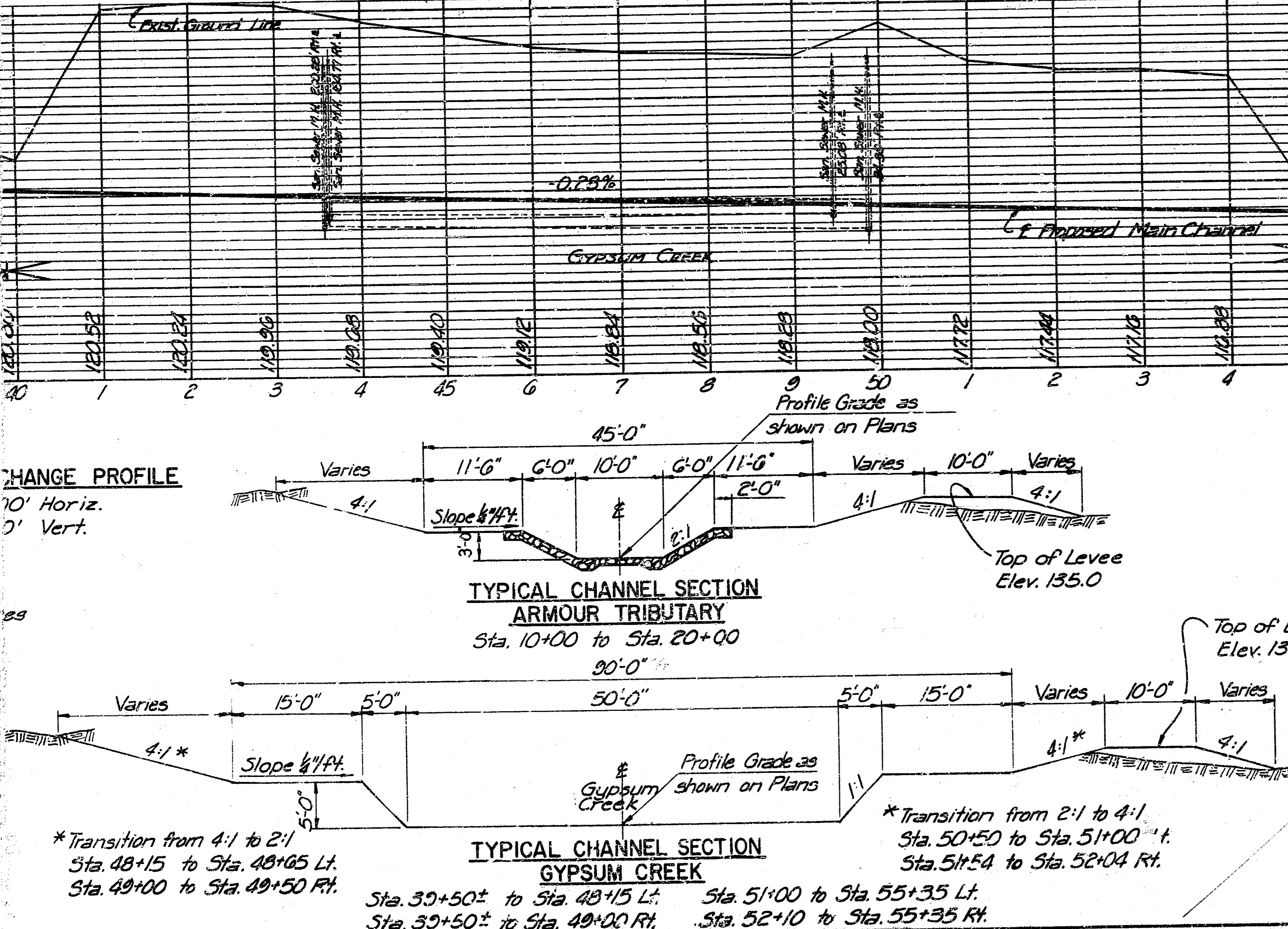
Sta. 54+27 to Sta. 54+87-98 Rt. Const. Concrete Encasement for Proposed 48" San. Sewer See Sheet No. 18.

Sta. 55+80.00 Const. Conc. Manhole 95.00' Rt. Install 48"x291.07' PLR.C.P. San. Sewer (S.W.) # 8" V.C.P. Stub (W.N.W.) See Sh. No. 16 & 17

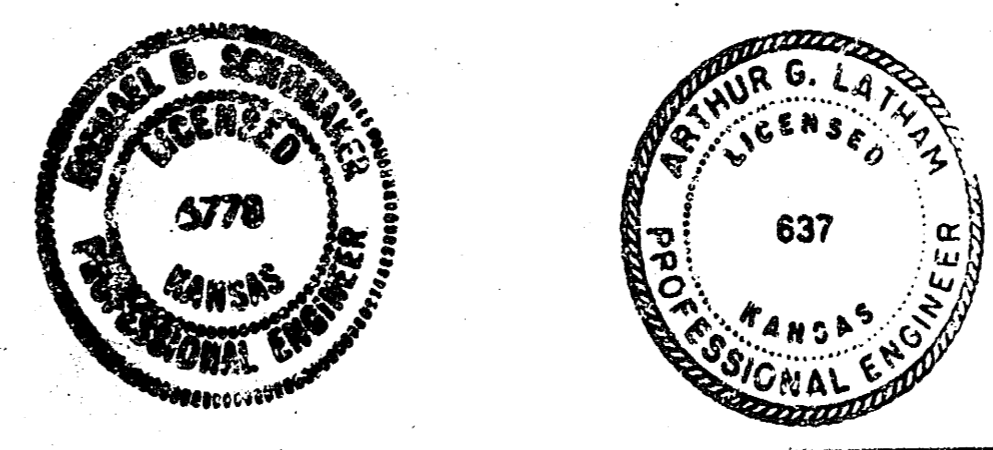
GENERAL NOTES

- CONTRACTOR SHALL REFER TO "CONSTRUCTION SEQUENCING" PRIOR TO BEGINNING ANY SANITARY SEWER CONSTRUCTION. SEE SHEET NOS. 3A AND 18.
- WHERE THE CONTRACTOR IS TO PLACE FILL OVER THE EXISTING 18" V.C.P. SANITARY SEWER ALONG THE ARMOUR TRIBUTARY (2 LOCATIONS) HE SHALL CAREFULLY PLACE THE MATERIAL WITHOUT DAMAGING THE PIPE. THE PIPE WILL BE TELE-TESTED PRIOR TO ACCEPTANCE AND ANY PIPELINE DAMAGE WILL BE REPAIRED AT NO ADDITIONAL COST TO THE OWNER.
- THE PROPERTY OWNED BY CHARLES W. & JANE C. HARRIS SHALL BE FILLED TO MINIMUM ELEV. 133.0. ALL EMBANKMENT PLACED ON SAID PROPERTY SHALL BE COMPACTED IN ACCORDANCE WITH THE REQUIREMENTS FOR TYPE B COMPACTASION AS OUTLINED IN SECTION 210 OF THE KANSAS DEPARTMENT OF TRANSPORTATION "STANDARD SPECIFICATIONS FOR ROAD AND BRIDGE CONSTRUCTION, 1973 EDITION".
- THE CONTRACTOR SHALL REMOVE THE EXISTING BRIDGE (17' x 30" CONCRETE SLAB ON TIMBER PILING). ALL MATERIAL SHALL BE DISPOSED OF AS DIRECTED BY THE ENGINEER.
- EXISTING SANITARY SEWER PIPE, NOTED THIS [Symbol] MAY BE PLUGGED AT EACH END AND BLOWN FULL WITH SAND AT THE CONTRACTOR'S OPTION.
- ALL P.L.R.C.P. SHALL BE CLASS IV.
- THE QUANTITY SHOWN ON SHEET NO. 23 FOR "REMOVAL OF LARGE TREES" IS BASED ON A FIELD SURVEY FOR THIS ITEM 9/1/79. THE EXACT LOCATION AND NUMBER OF TREES TO BE REMOVED SHALL BE AS DETERMINED BY THE ENGINEER AT THE TIME OF CONSTRUCTION AND SHALL BE LIMITED TO THOSE TREES WHICH, WITHOUT QUESTION, CONSTITUTE AN IMPEDIMENT TO CONSTRUCTION OF THE IMPROVEMENT TO THE LINES AND GRADES DETAILED. REMOVAL SHALL NOT BE CONSIDERED TO NECESSARILY MEAN ALL VEGETATION WITHIN THE PROJECT EASEMENTS AND RIGHTS-OF-WAY.
- THE BARBED WIRE FENCE DESIGNATED TO BE RESET RT. STA. 40+27 TO STA. 42+40.13 SHALL BE RESET AT ITS PRESENT LOCATION USING EXISTING MATERIALS. THE TERMINAL POSTS SHALL BE "CORNER" TYPE POSTS SUFFICIENTLY BRACED TO PERMIT THE STRANDS TO BE TIGHTENED. PAYMENT FOR THIS WORK WILL BE INCLUDED IN THE LUMP-SUM PRICE BID FOR CLEARING AND GRUBBING.

CHANGE PROFILE
 1"=10' Horiz.
 1"=10' Vert.



* Transition from 4:1 to 2:1 Sta. 48+15 to Sta. 48+65 Lt. Sta. 49+00 to Sta. 49+50 Rt.
 # Sta. 39+50± to Sta. 48+15 Lt. # Sta. 51+00 to Sta. 55+35 Lt.
 # Sta. 39+50± to Sta. 49+00 Rt. # Sta. 52+10 to Sta. 55+35 Rt.



APPROVED _____ DATE _____
 CITY ENGINEER
 CITY OF WICHITA, KANSAS

CONTOUR MAP
GYPSUM CREEK BRIDGE
 OLD PROJECT NO. DAKB 577094
 NEW NO. 472-76-245-80596-000-000-001
 PROFESSIONAL ENGINEERING CONSULTANTS, P.A.
 ENGINEERS
 WICHITA, KANSAS

DESIGNED BY _____ CHECKED BY _____
 DRAWN BY _____ DATE _____ JOB NO. _____