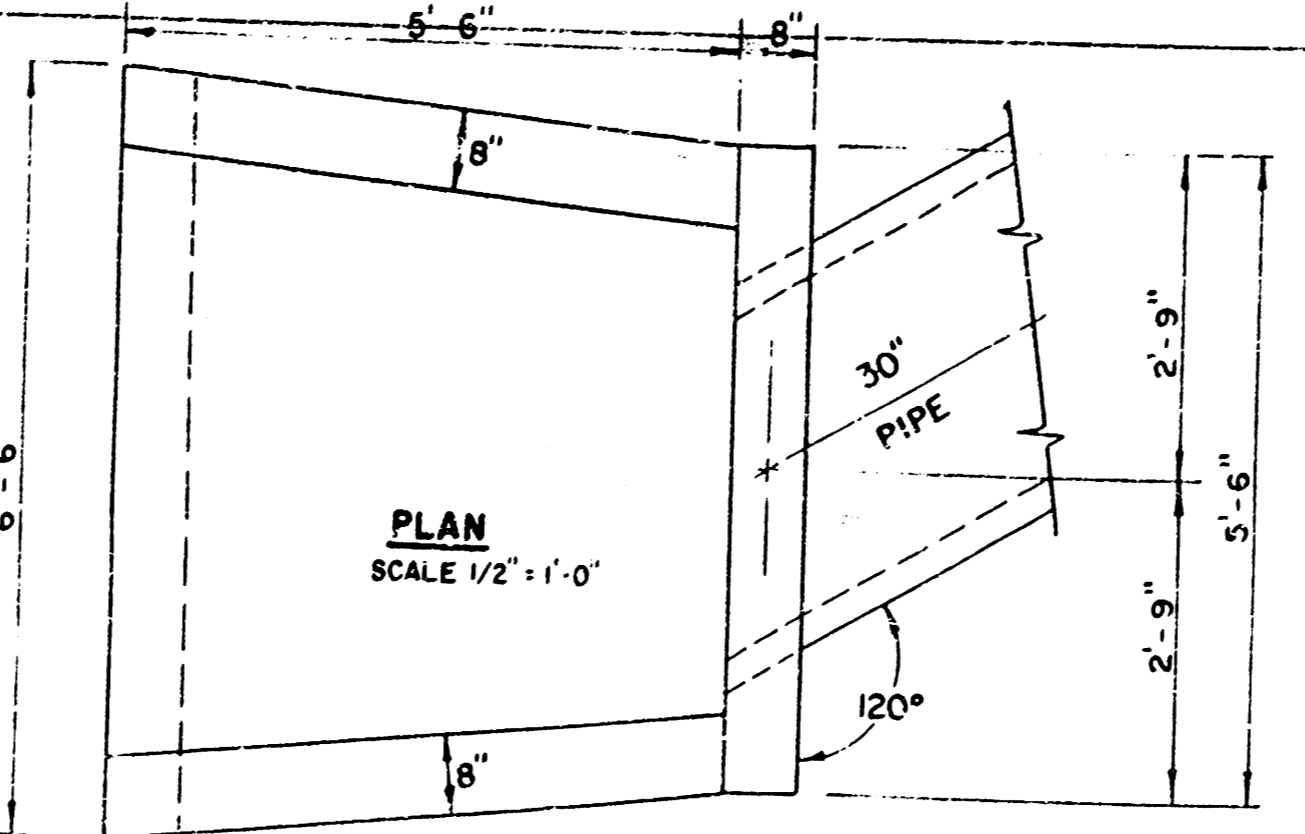
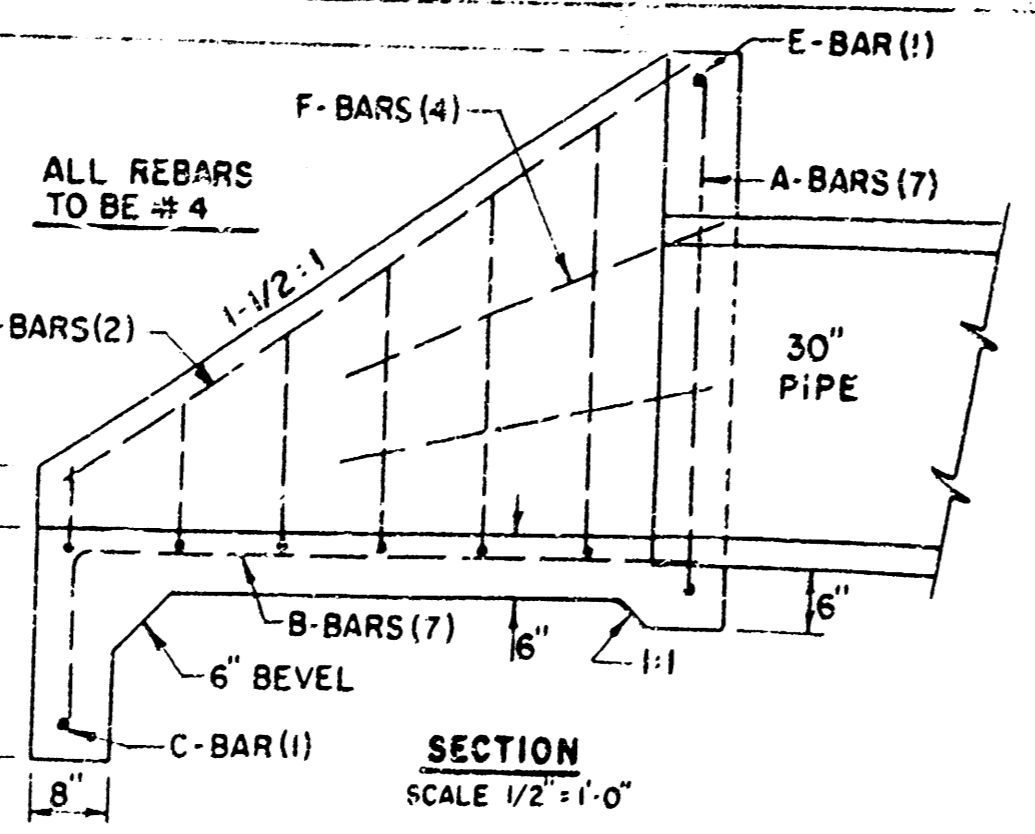


SCALE
 HORZ. 1" = 20'
 VERT. 1" = 5'

HEADWALL FOR 30" PIPE



REVISION	DRAWN BY	CHECKED BY	DESIGNED BY	PROJECT
MCE	SP		RF	
	DEJ			

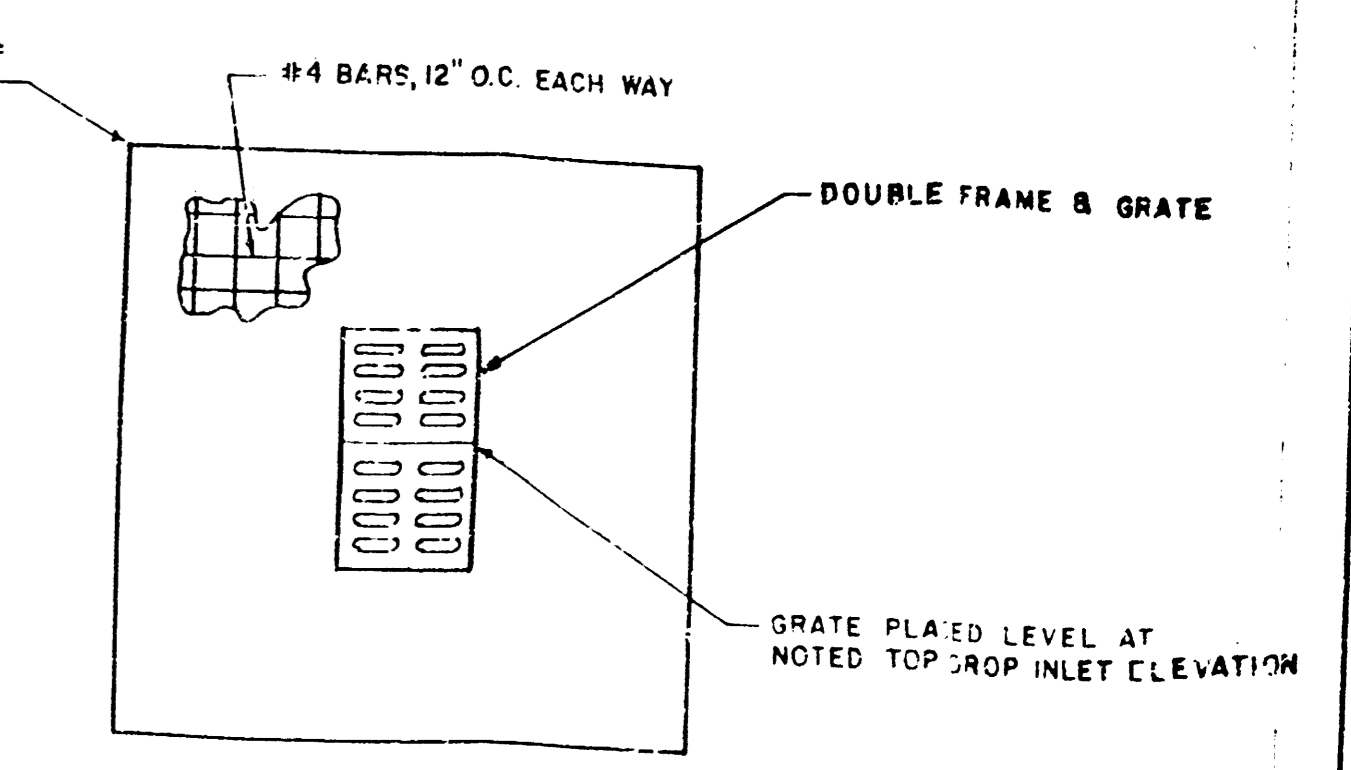
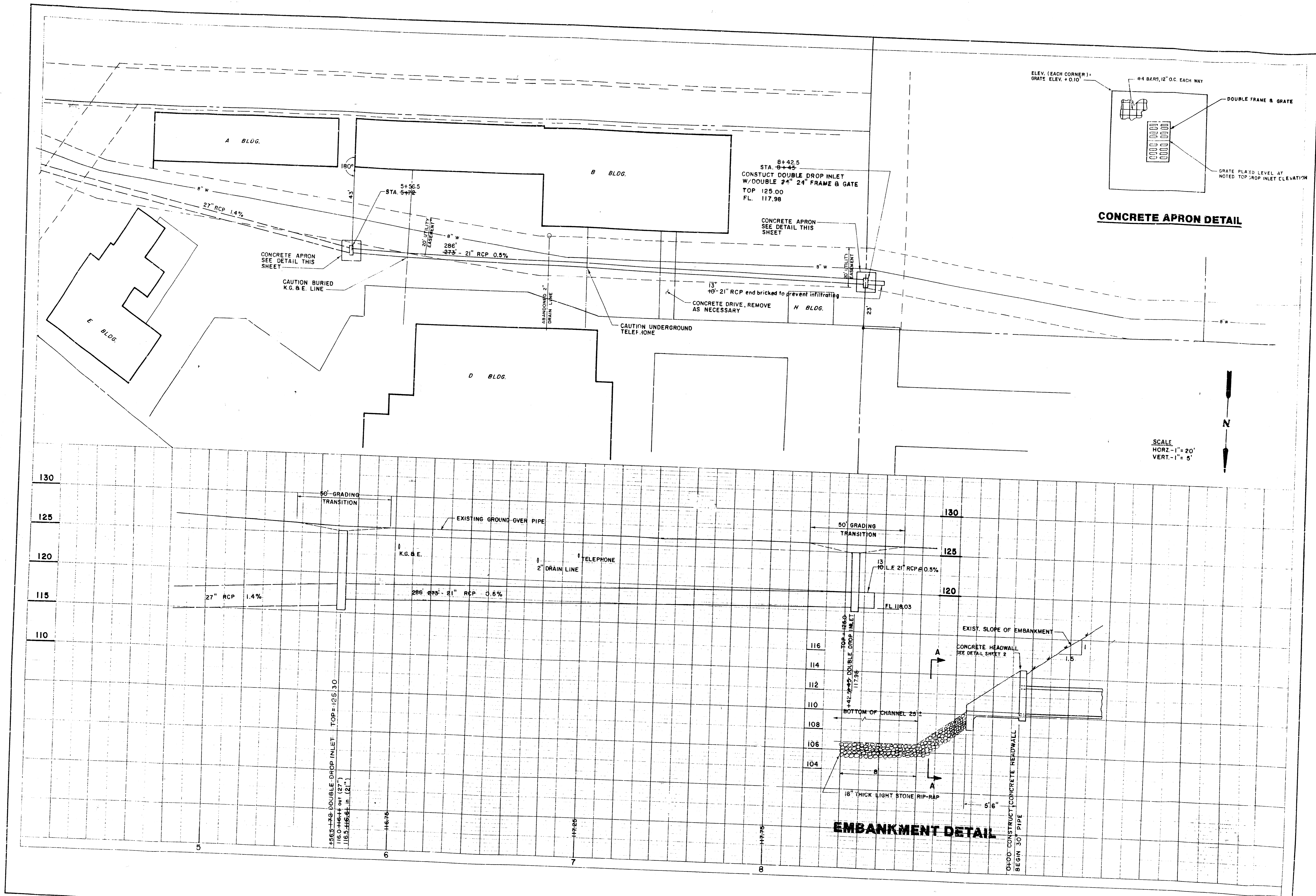
STORM WATER SEWER SYSTEM

CUSTOMER

N. INDUSTRIAL PARK 4TH ADDN.

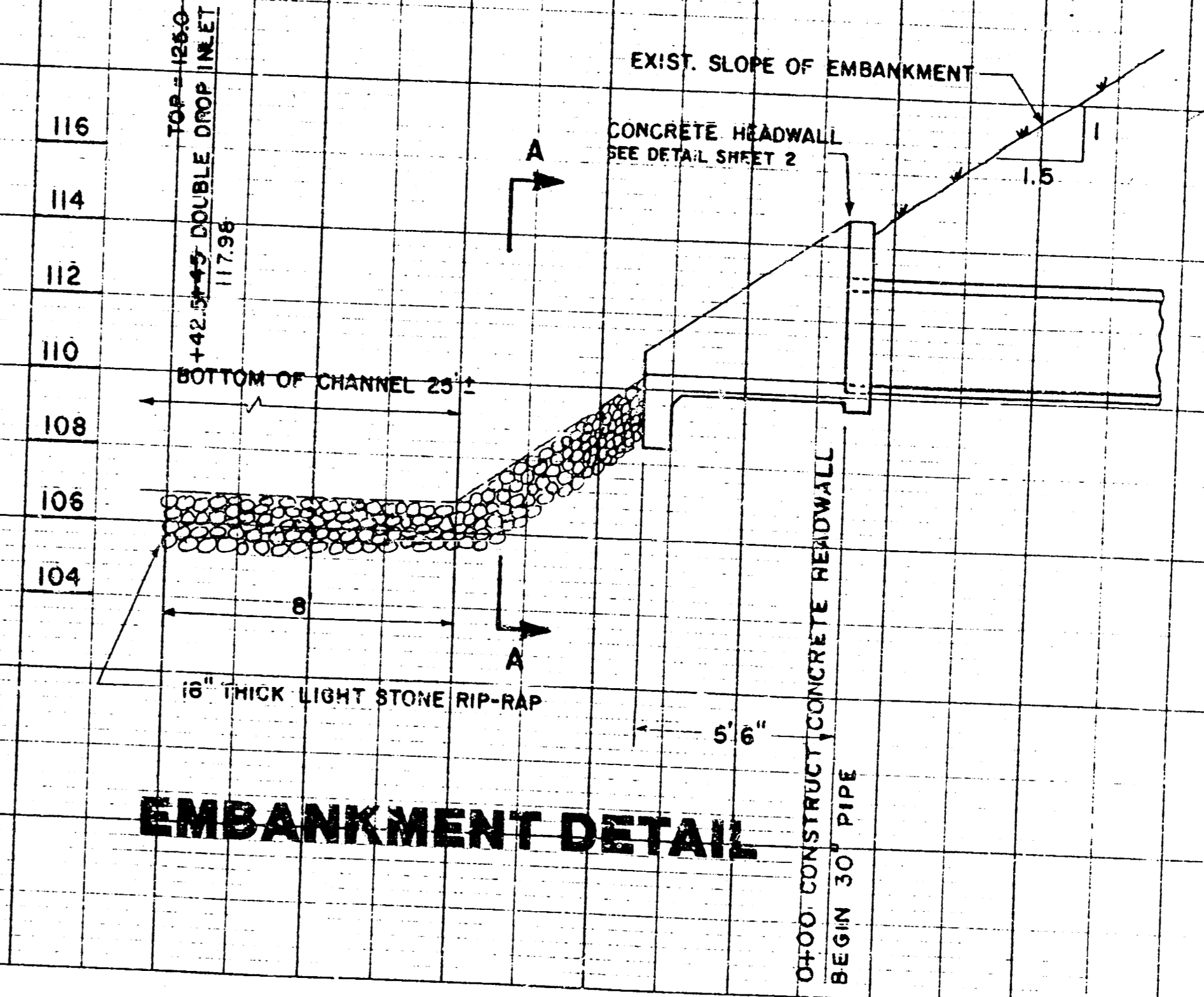
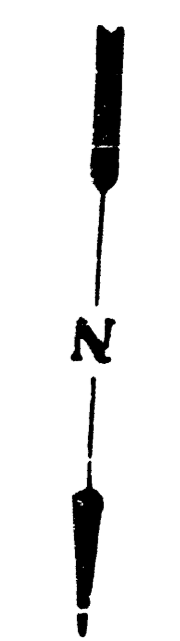
REISS & GOODNESS ENGINEERS
 2100 WEST 21ST STREET
 WICHITA, KANSAS 67203
 (316) 632-0211

SCALE NOTED	PROJECT NO.
DATE 12-3-90	ST0190
	SHEET 2 OF 4



CONCRETE APRON DETAIL

SCALE
 HORZ - 1" = 20'
 VERT - 1" = 5'



EMBANKMENT DETAIL

REVISION	DRAWN BY	CHECKED BY	DESIGNED BY	PROJECT
	S.P. D.E.J.	RS	RP	

STORM WATER SEWER SYSTEM

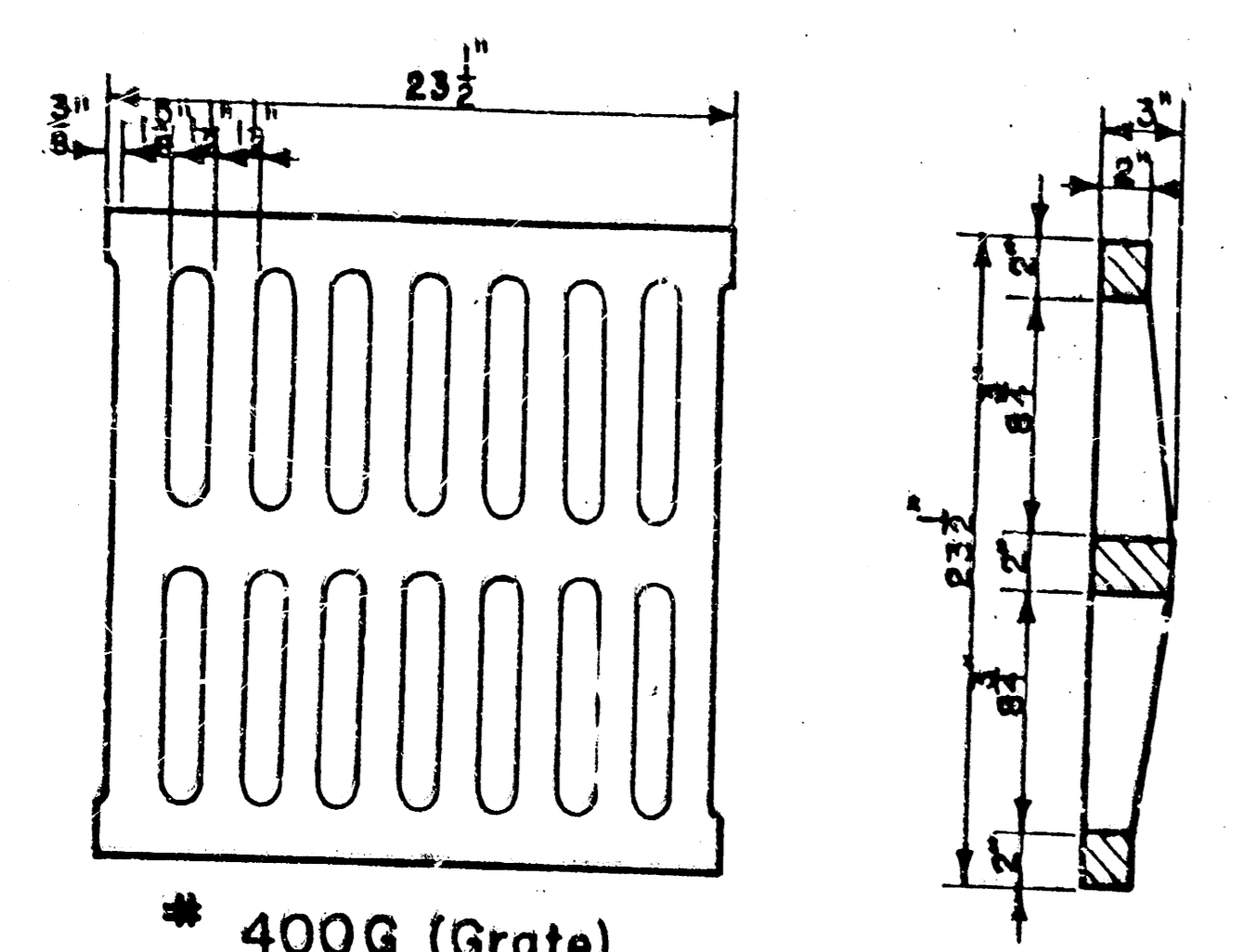
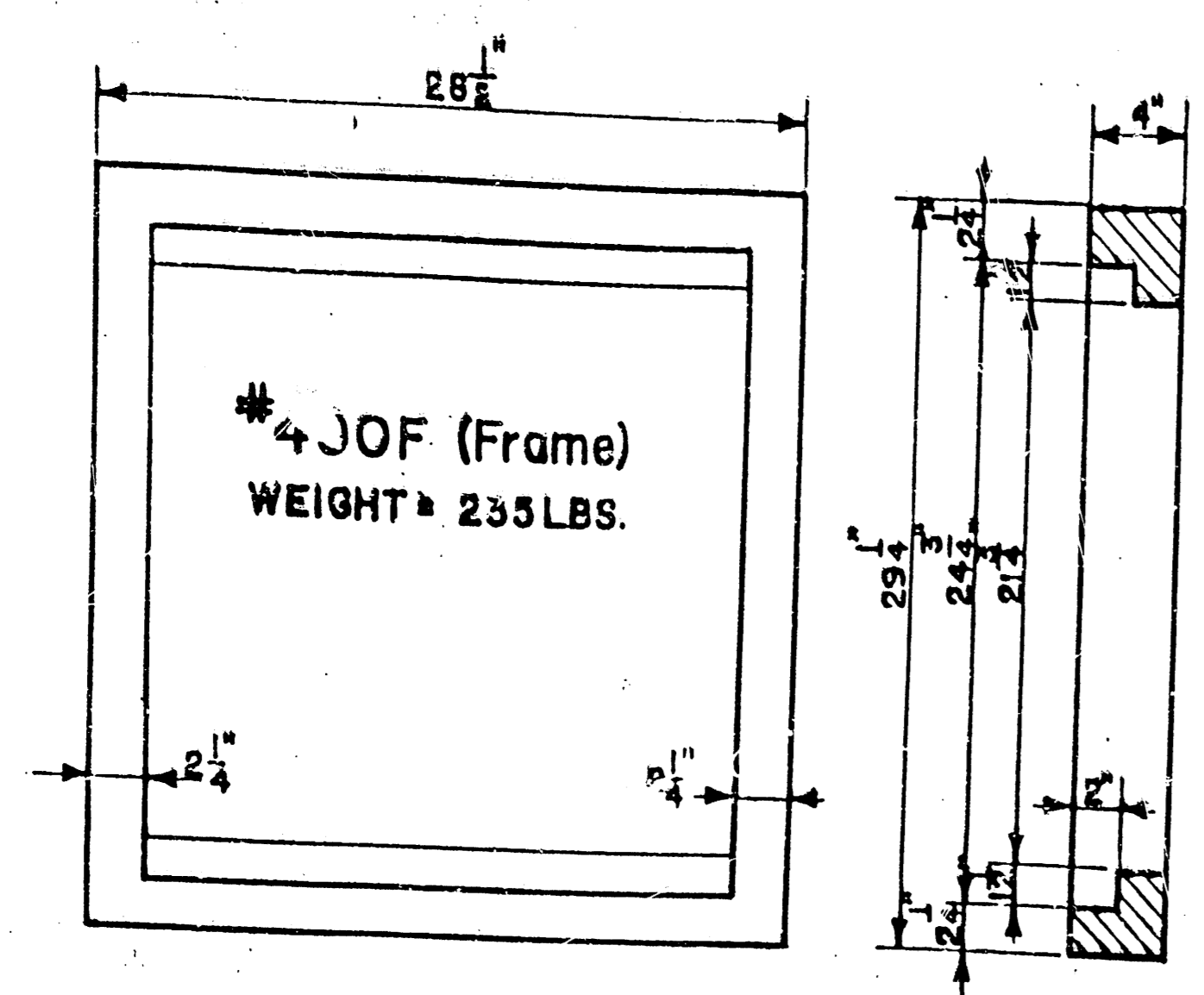
CUSTOMER

N. INDUSTRIAL PARK 4TH ADDN.

REISS & GOODNESS ENGINEERS
 2100 WEST 21ST STREET
 WICHITA, KANSAS 67203
 (316) 832-0213

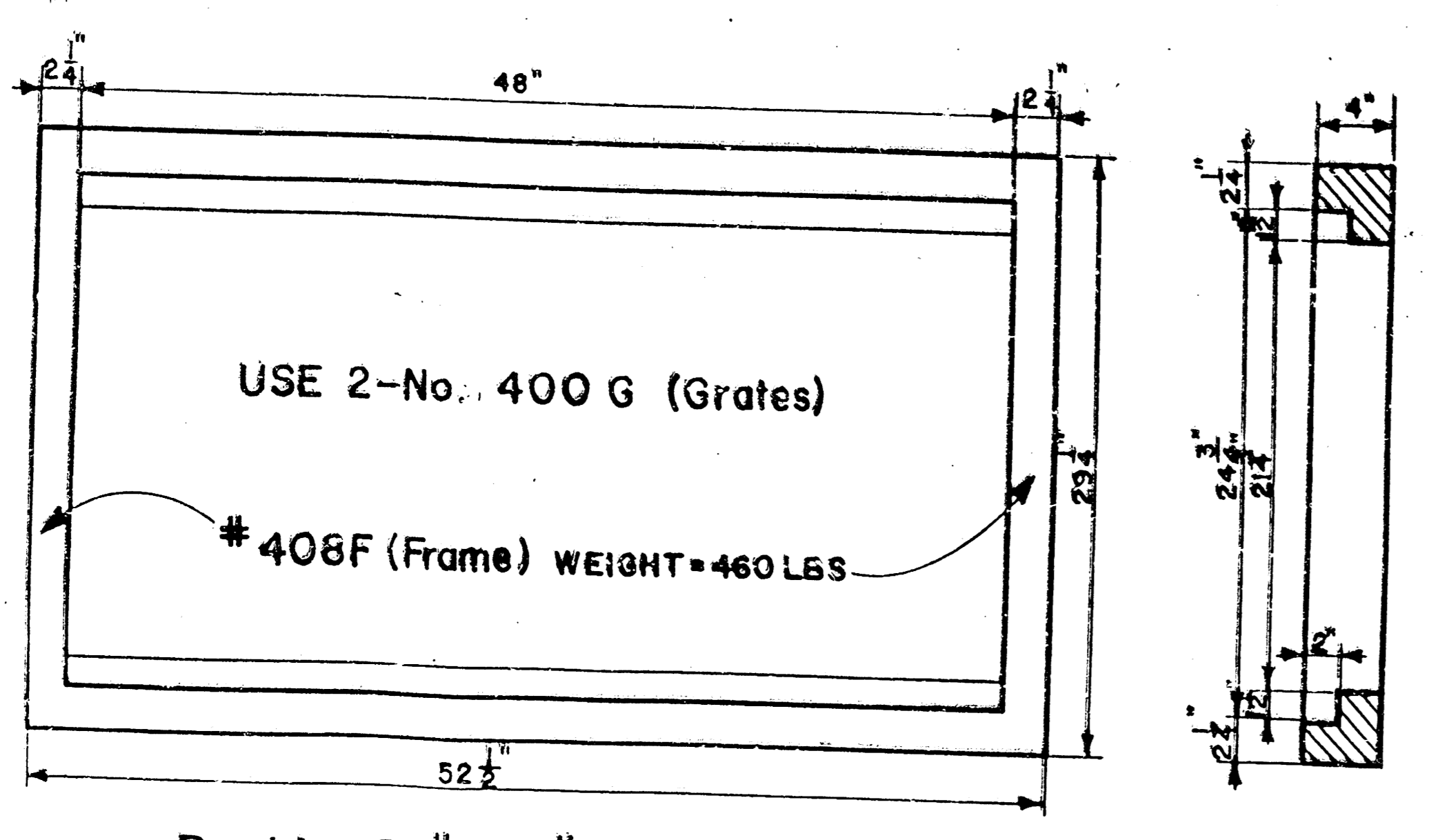
SCALE NOTED	PROJECT NO.
DATE 12-3-90	57030
	SHEET 3 OF 4

NOTE: Grates shall be imprinted on the top surface with "CITY OF WICHITA" using letters at least 1" in height. Other marking methods may be used only if approved by the engineer.

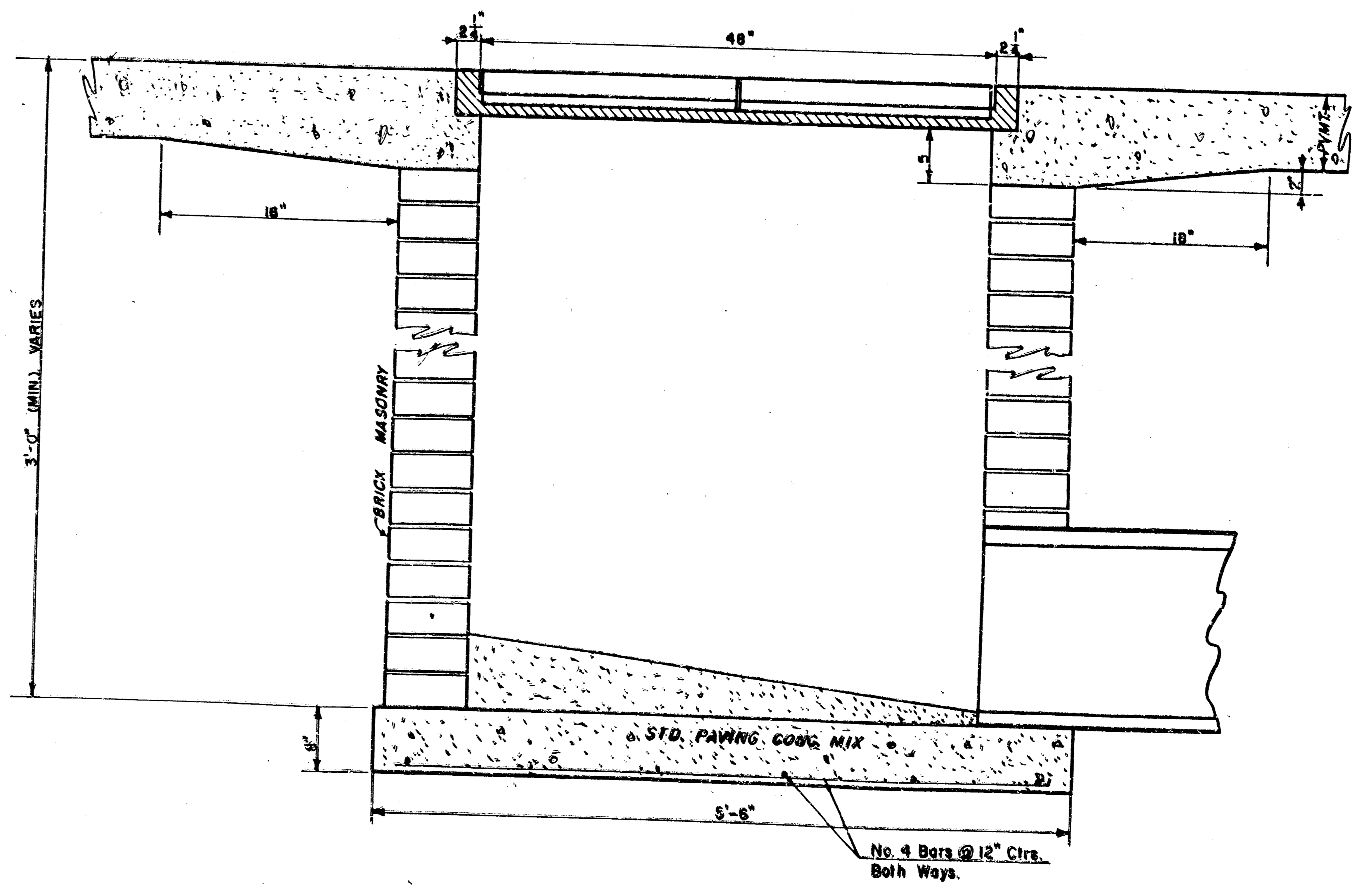
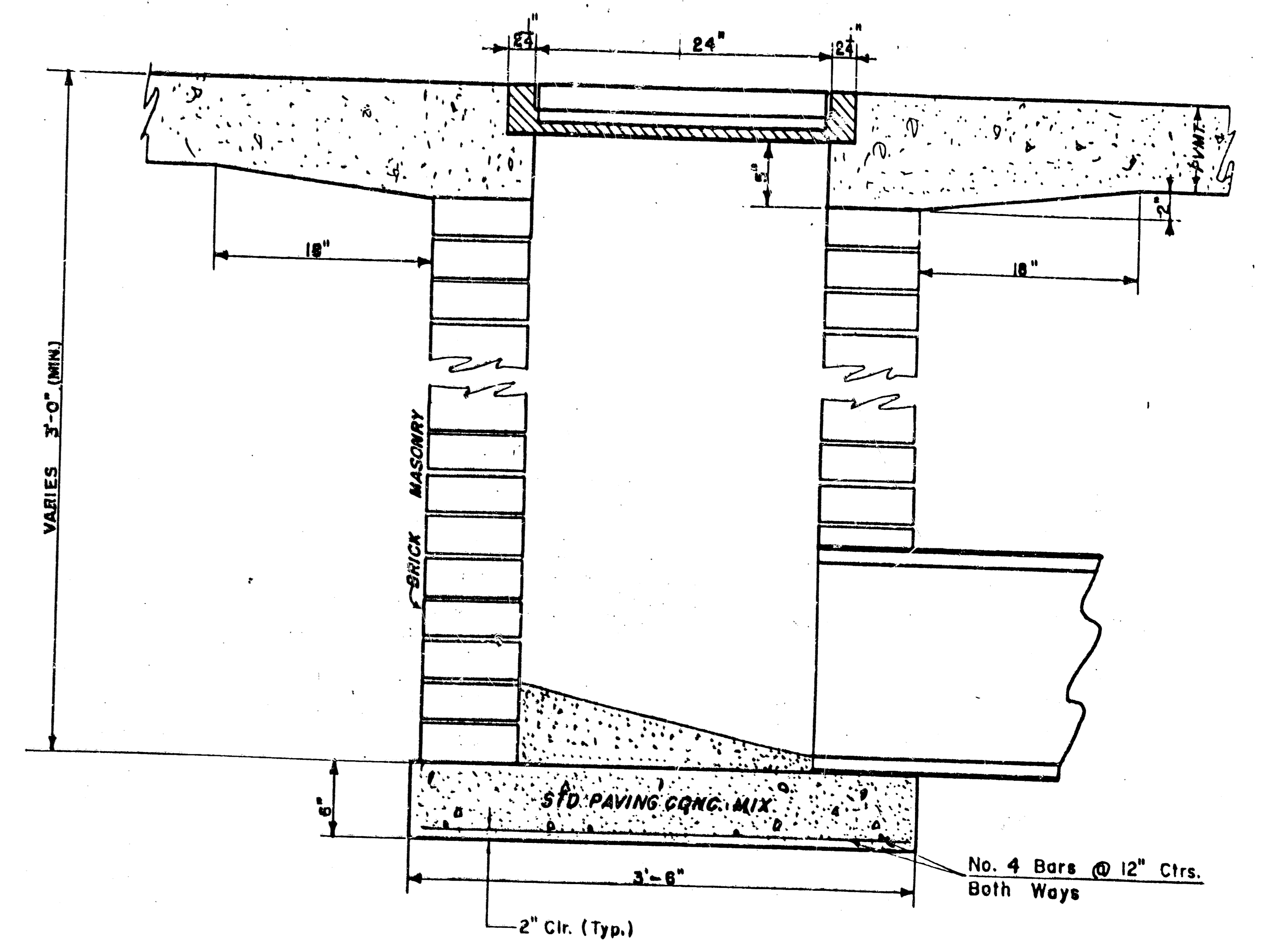
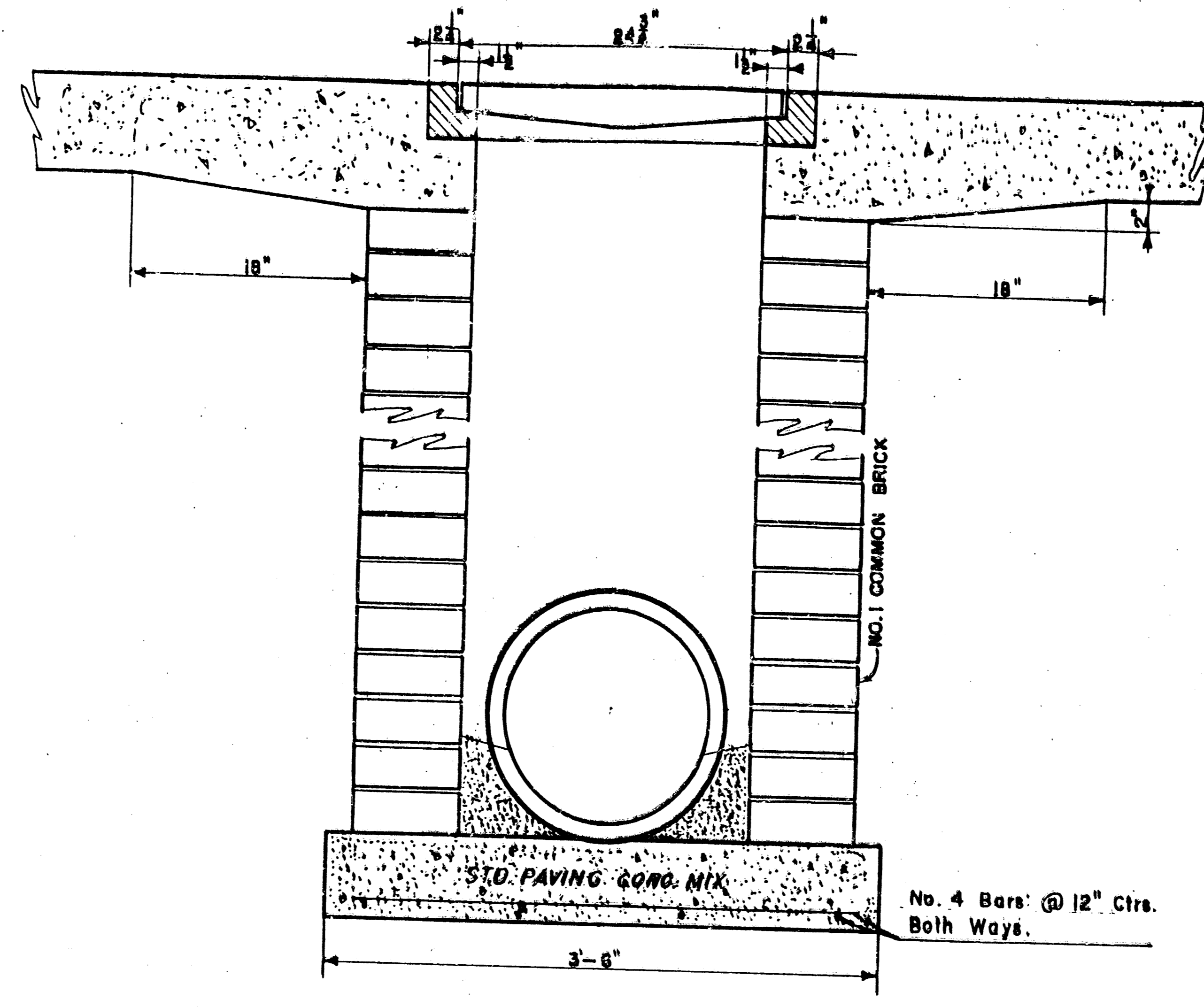


400G (Grate)
WEIGHT = 235 LBS

24"x24" Frame & Grate Detail



Double 24"x24" Frame Detail



DROP INLET DETAILS

M.E. Lindebak, City Engineer
City of Wichita, Kansas
Project
Project No.
Date:
Scale: 1-1/2" = 1'-0"

REVISED 12-26-90