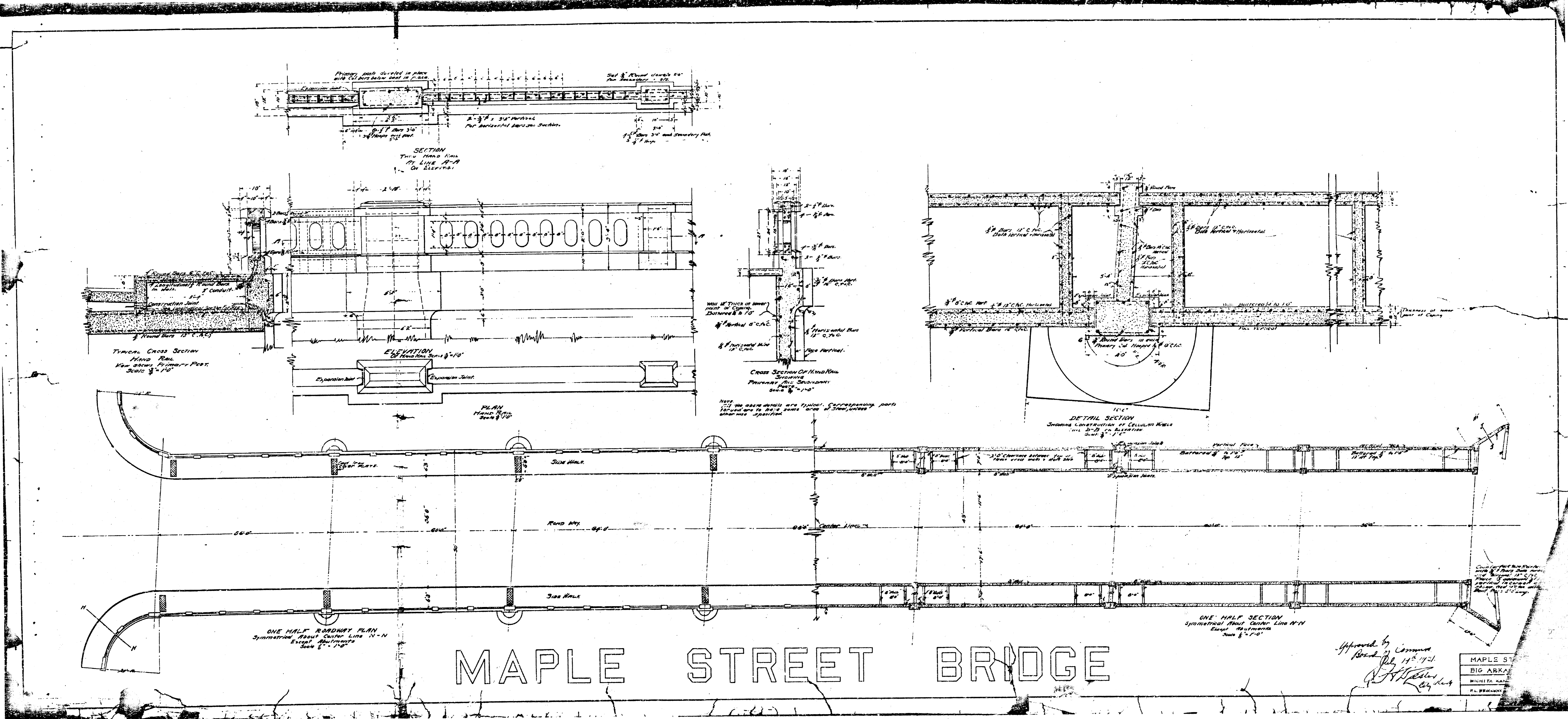


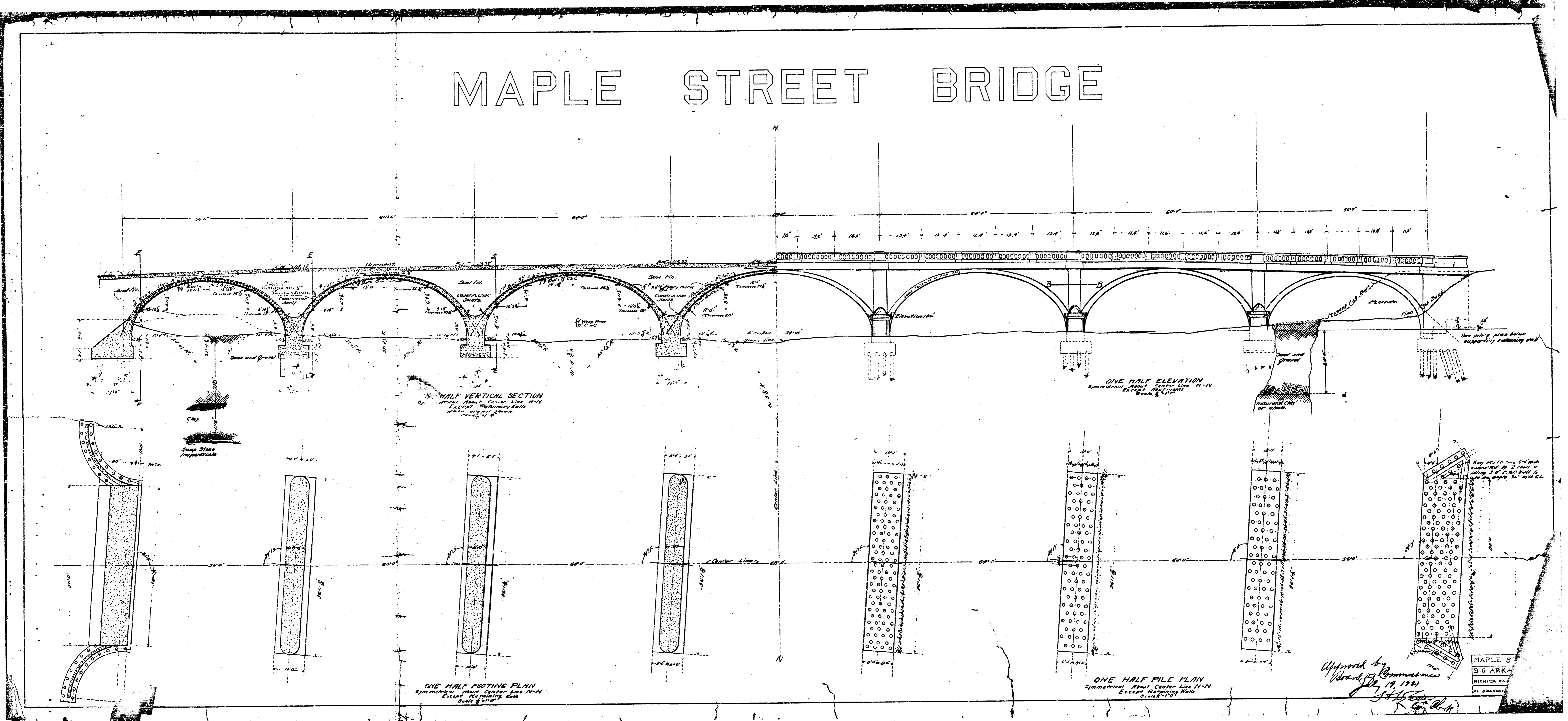
MAPLE STREET BRIDGE

Approved by Command
 Date 11/1/14
[Signature]

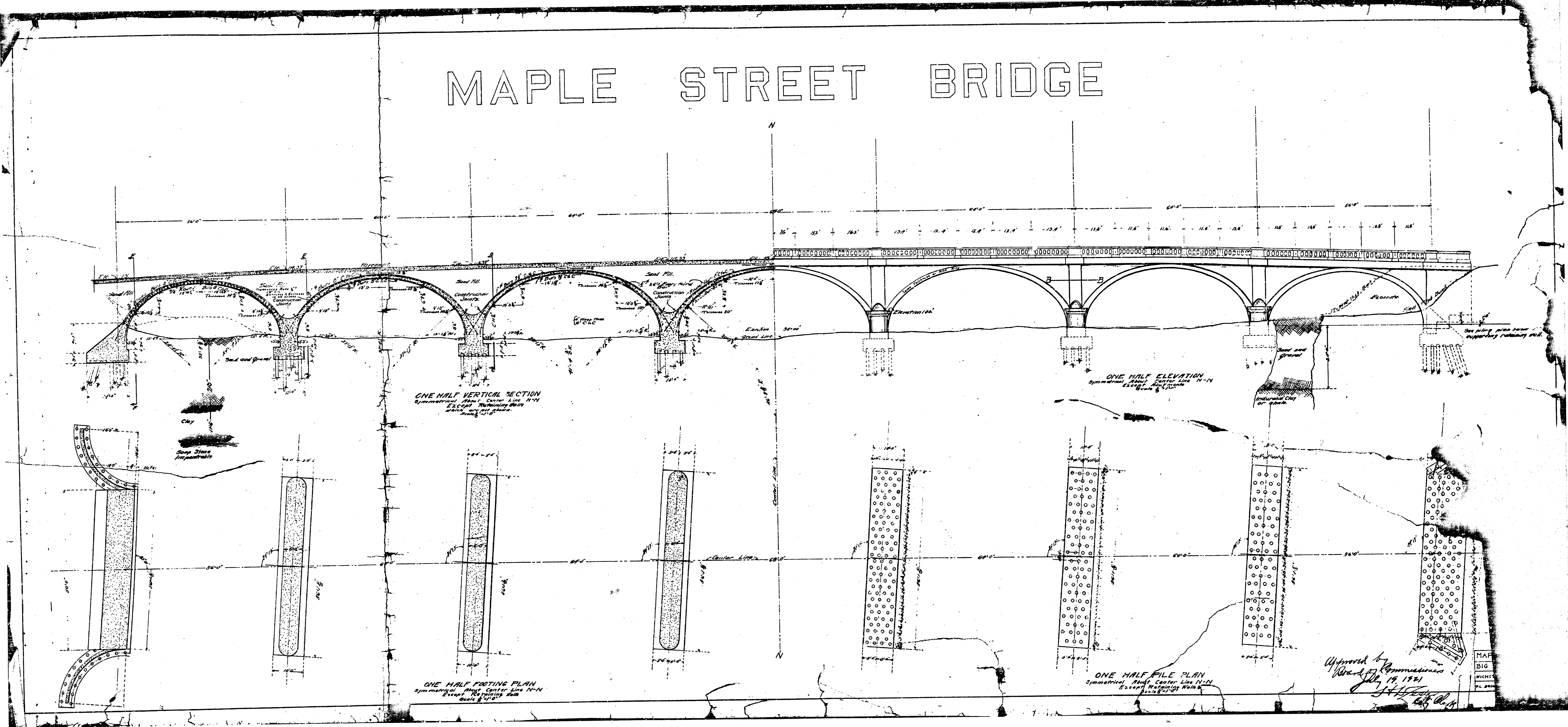
MAPLE ST.
 BIG ARKANSAS
 MICHITA KAPLAN
 CIVIL ENGINEER



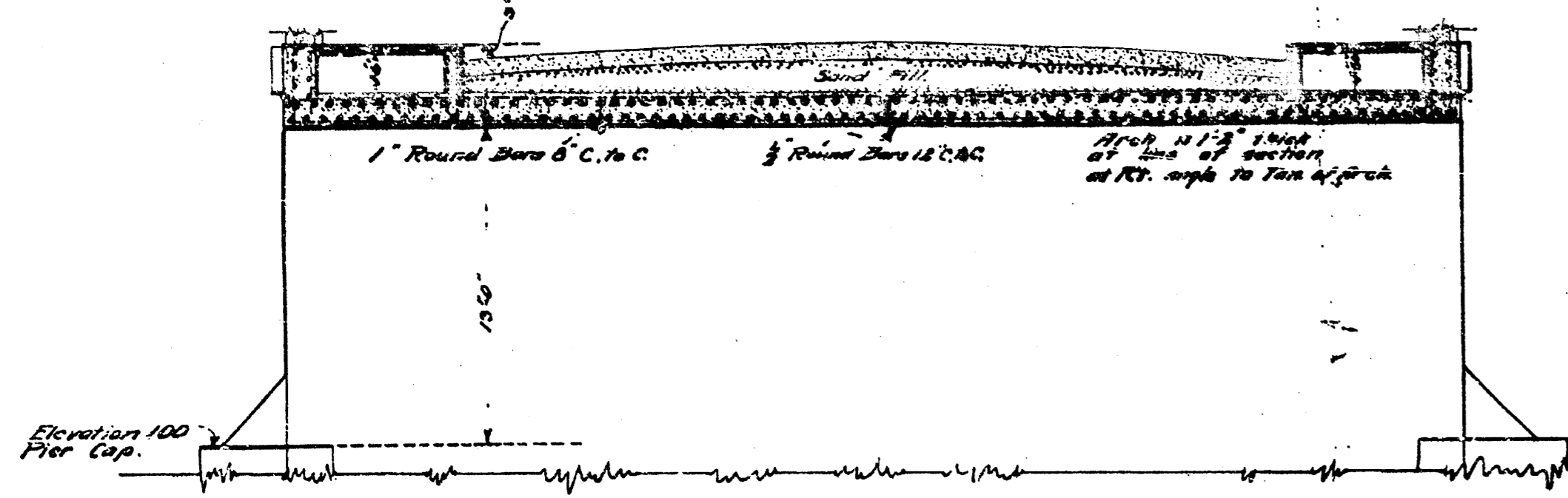
MAPLE STREET BRIDGE



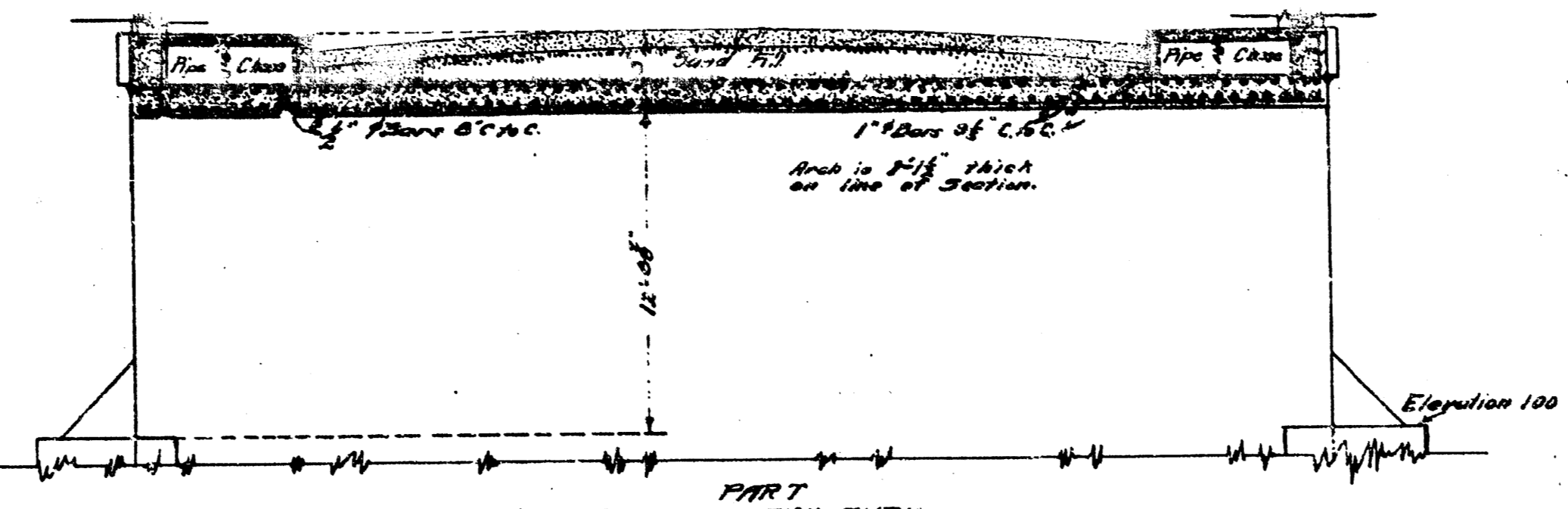
MAPLE STREET BRIDGE



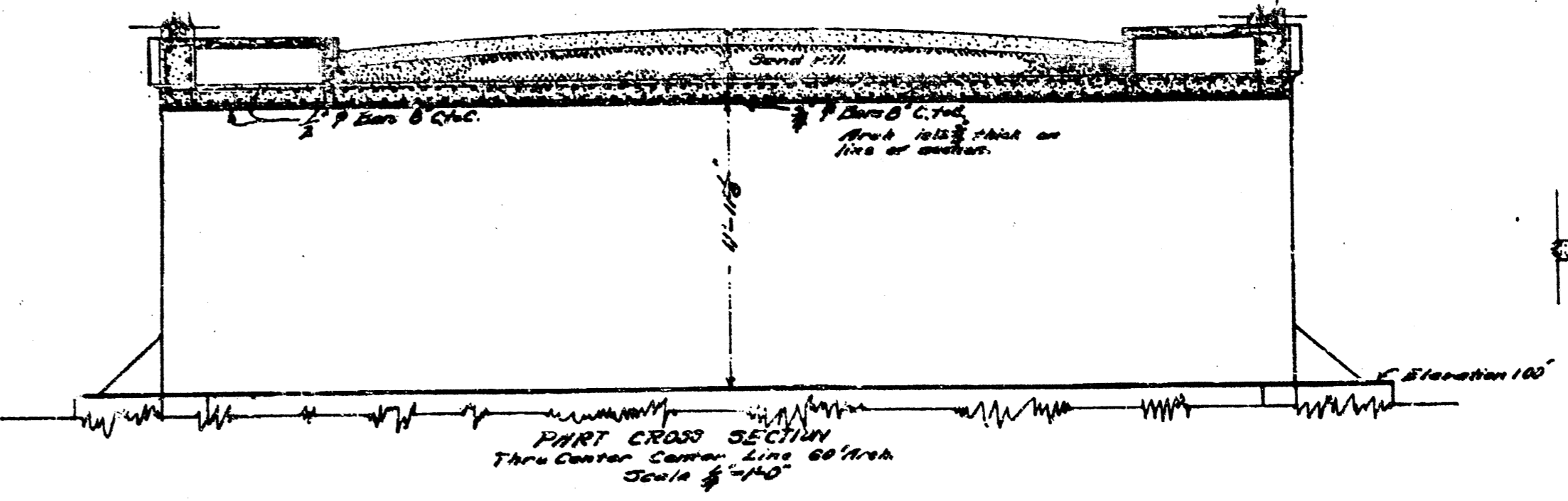
470
 1261 51
 H.D.



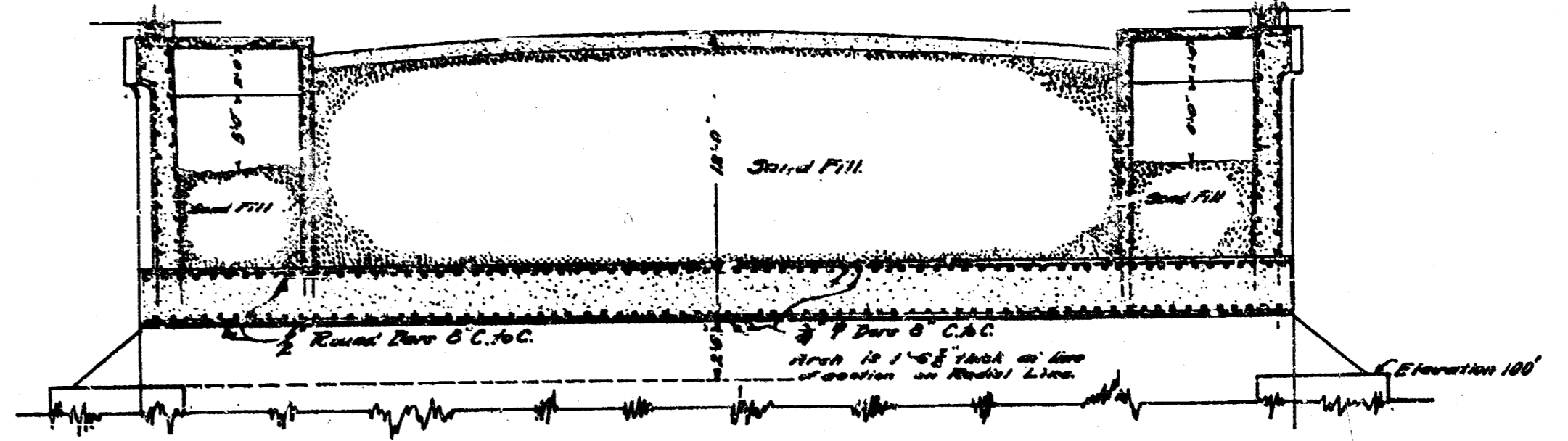
PART CROSS SECTION THRU CENTER LINE 50' ARCH Scale 1/4"



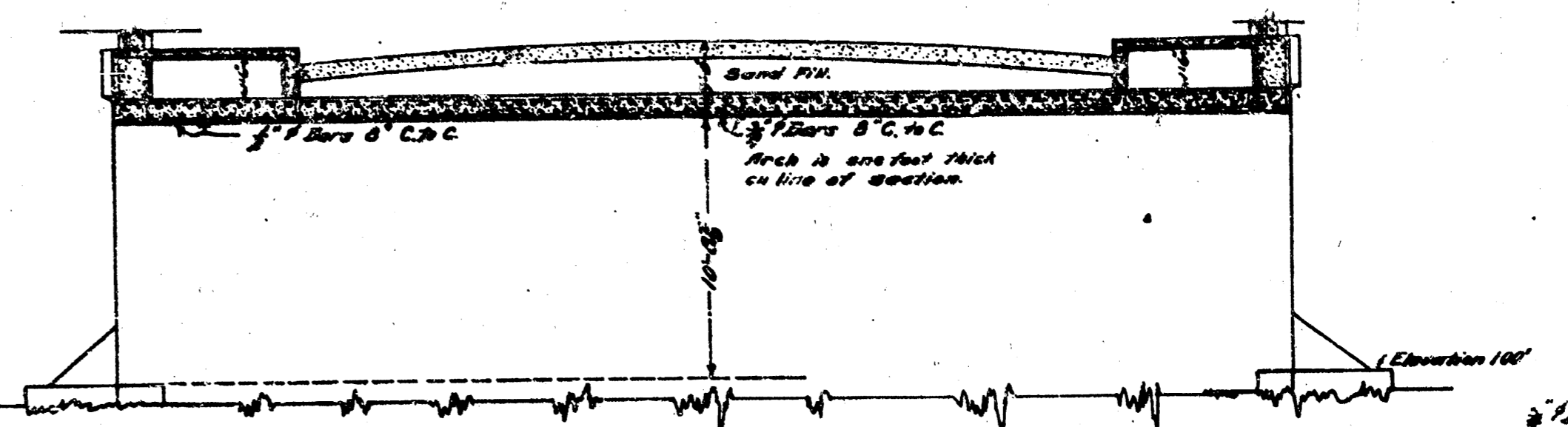
PART CROSS SECTION THRU CENTER LINE 64' ARCH Scale 1/4"



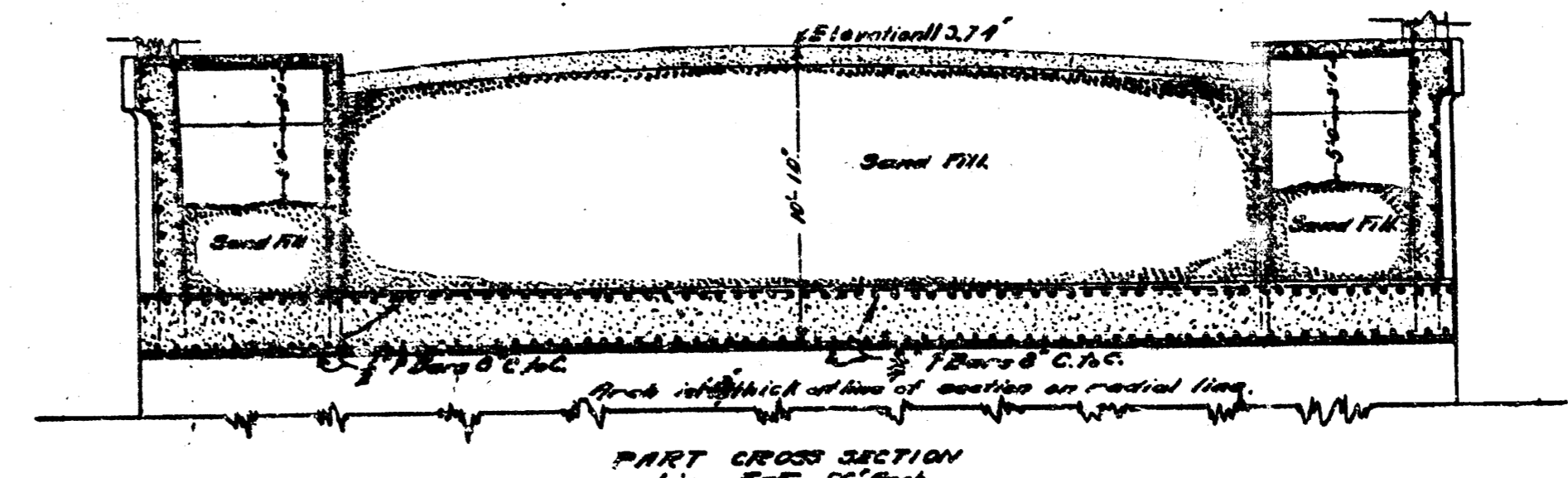
PART CROSS SECTION THRU CENTER LINE 88' ARCH Scale 1/4"



PART CROSS SECTION LINE E-E 50' ARCH Scale 1/4"

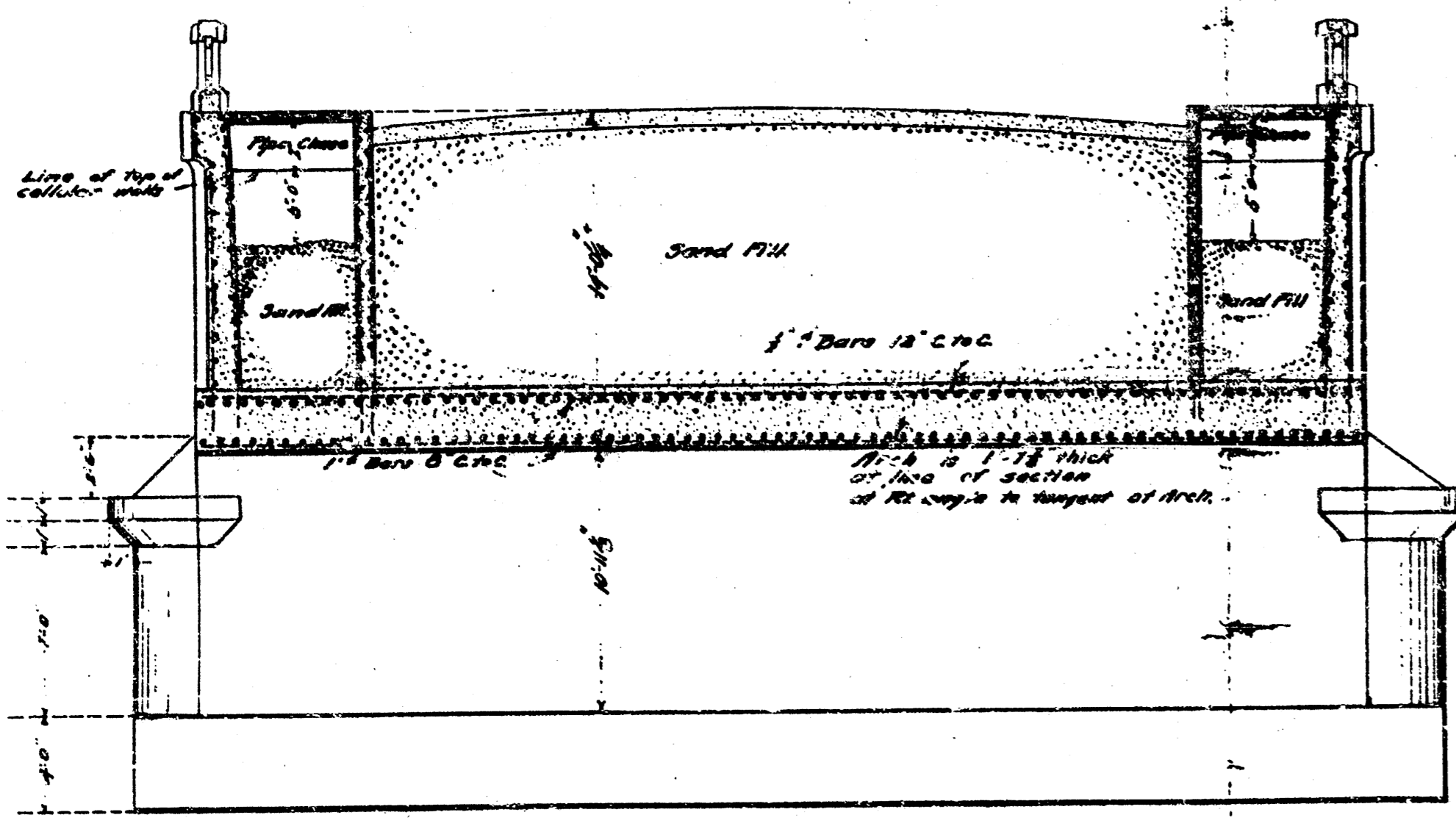


PART CROSS SECTION THRU CENTER LINE 50' ARCH Scale 1/4"

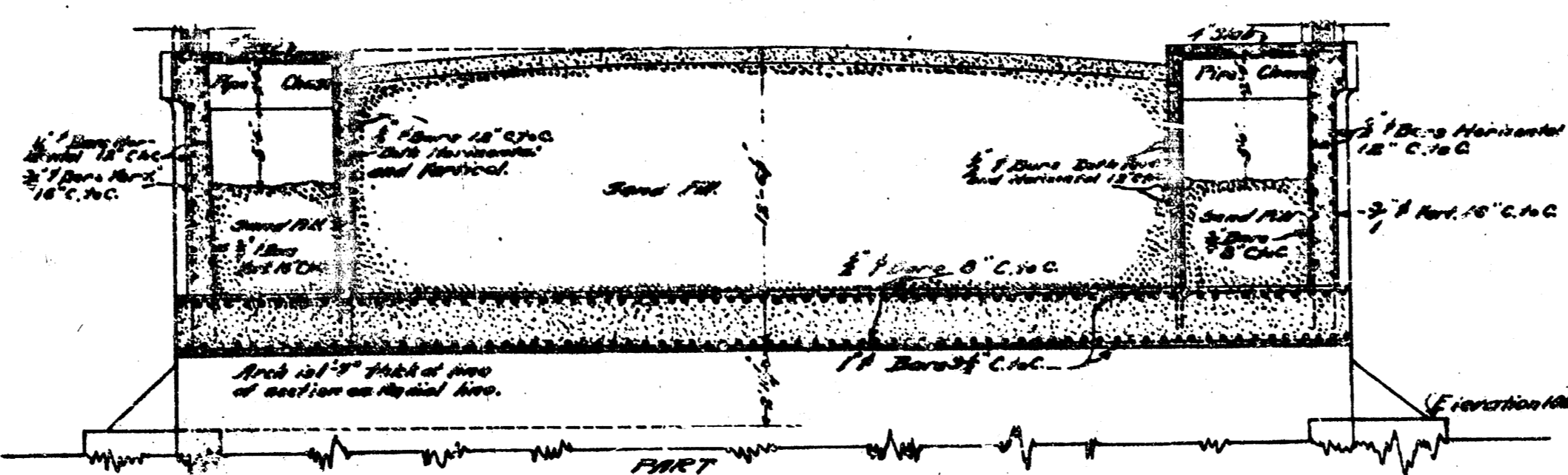


PART CROSS SECTION LINE F-F 45' ARCH Scale 1/4"

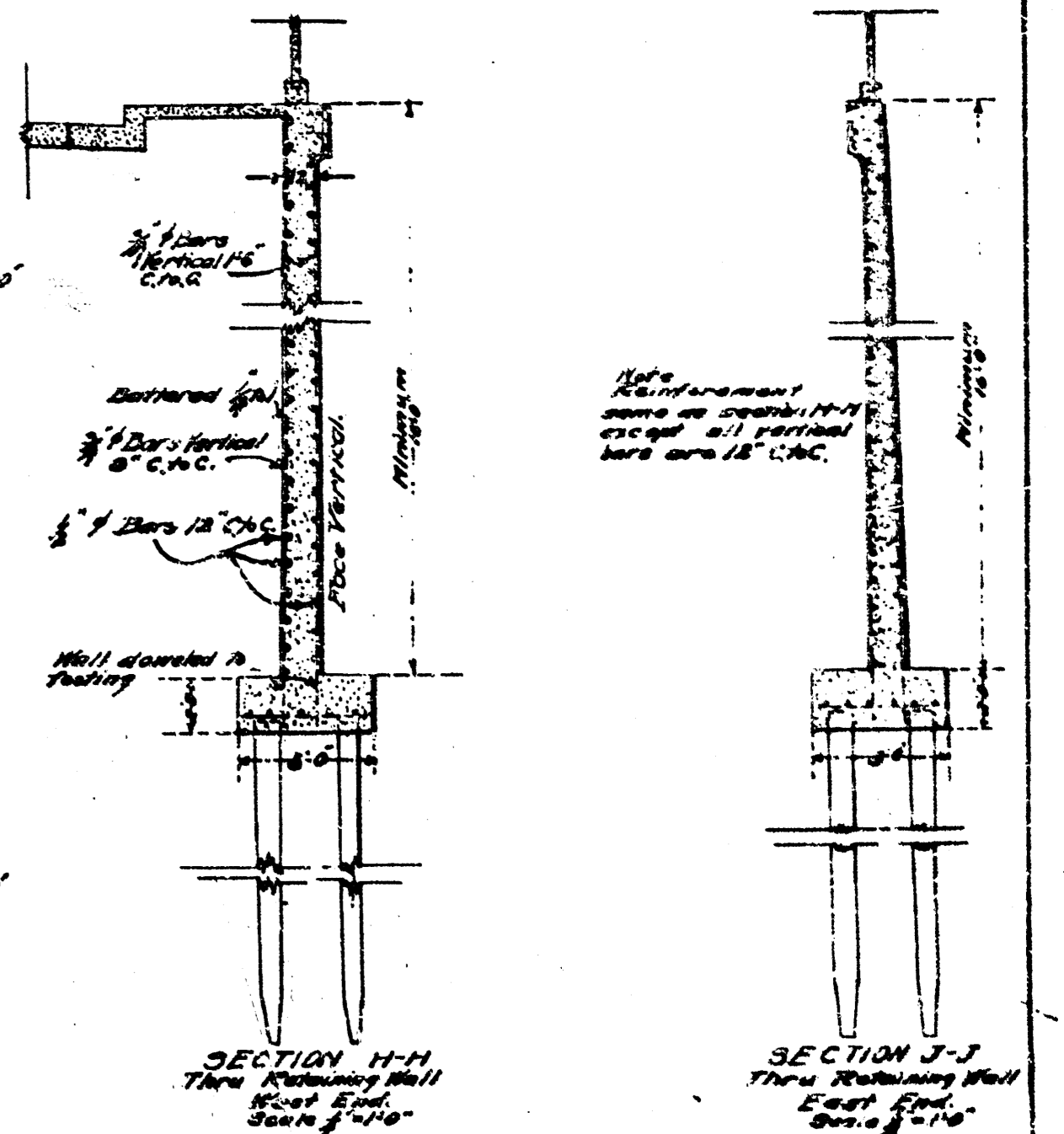
Note: The spacing and size of steel, where same is not shown in above sections see section C-C, also details sheet M-1.



CROSS SECTION AT 1/4" FROM CENTER LINE 50' ARCH Scale 1/4"

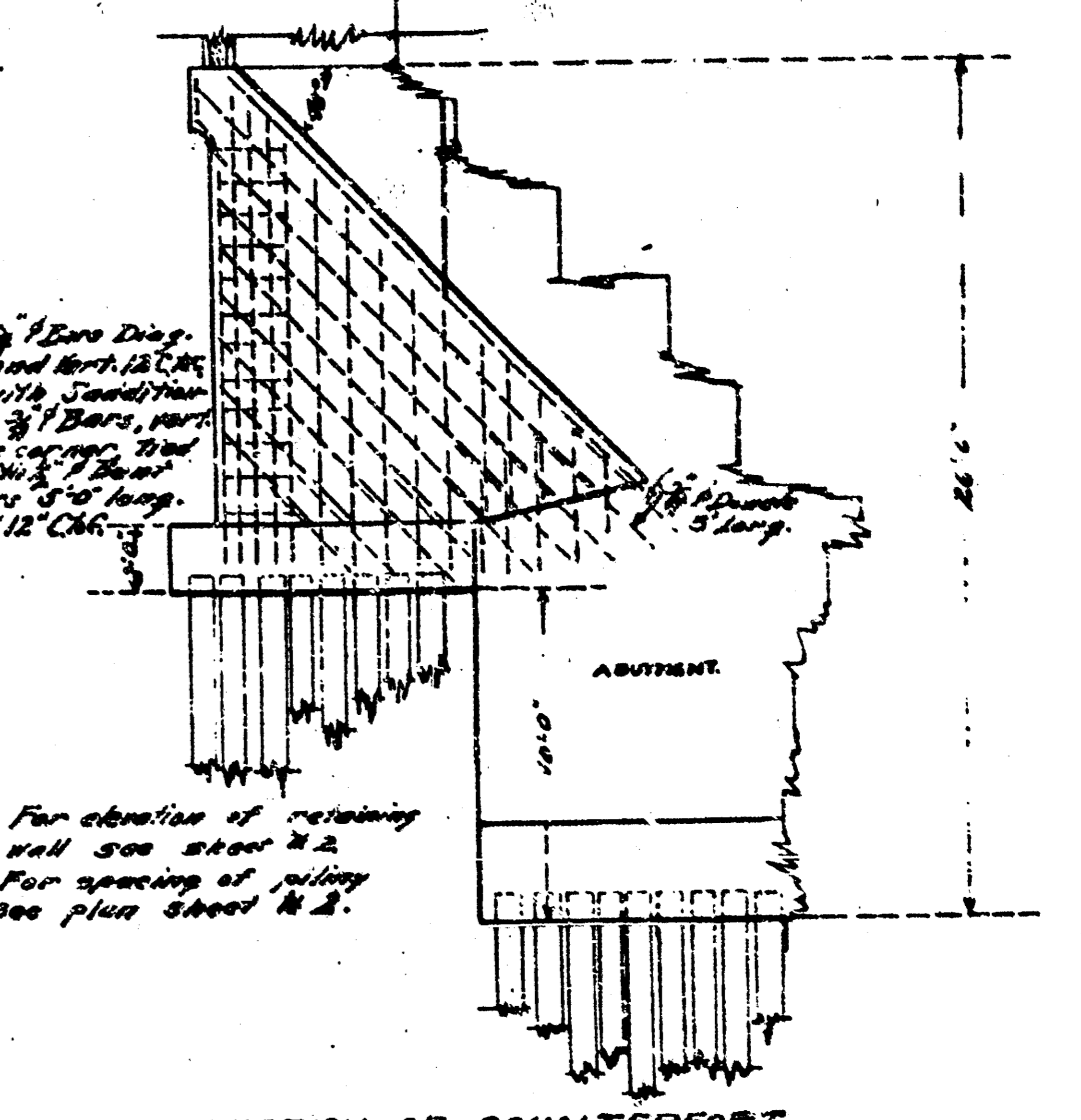


PART CROSS SECTION THRU C-C Scale 1/4"



SECTION H-H THRU EAST FOOT Scale 1/4"

SECTION J-J THRU EAST FOOT Scale 1/4"

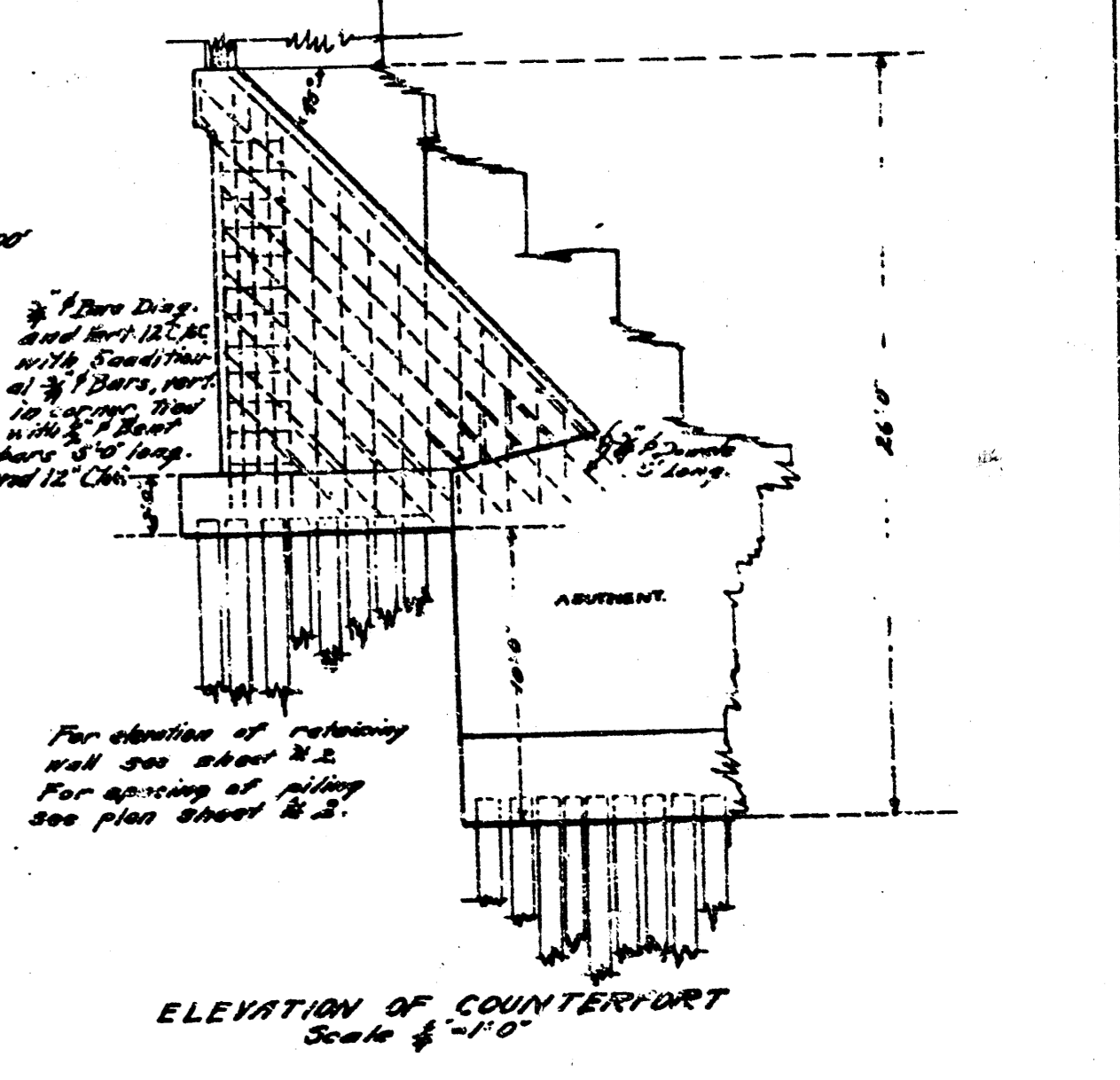
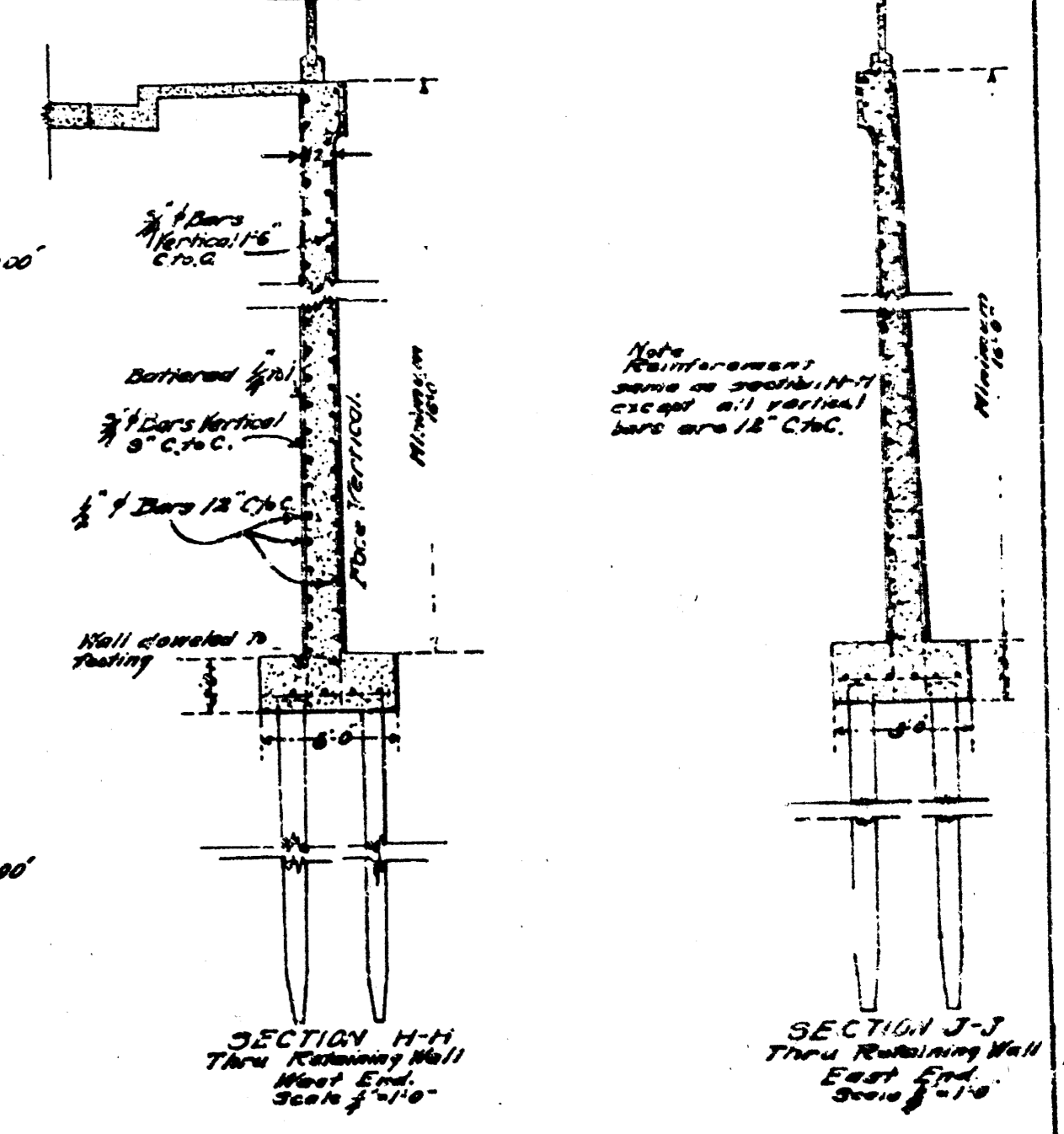
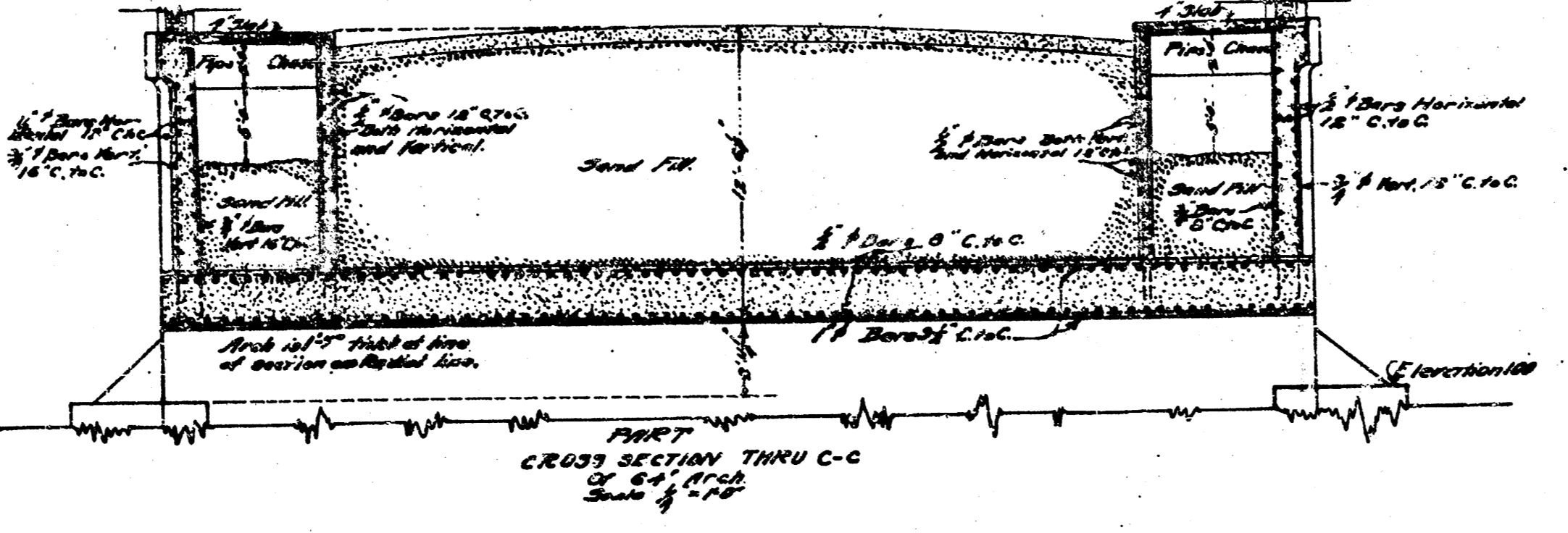
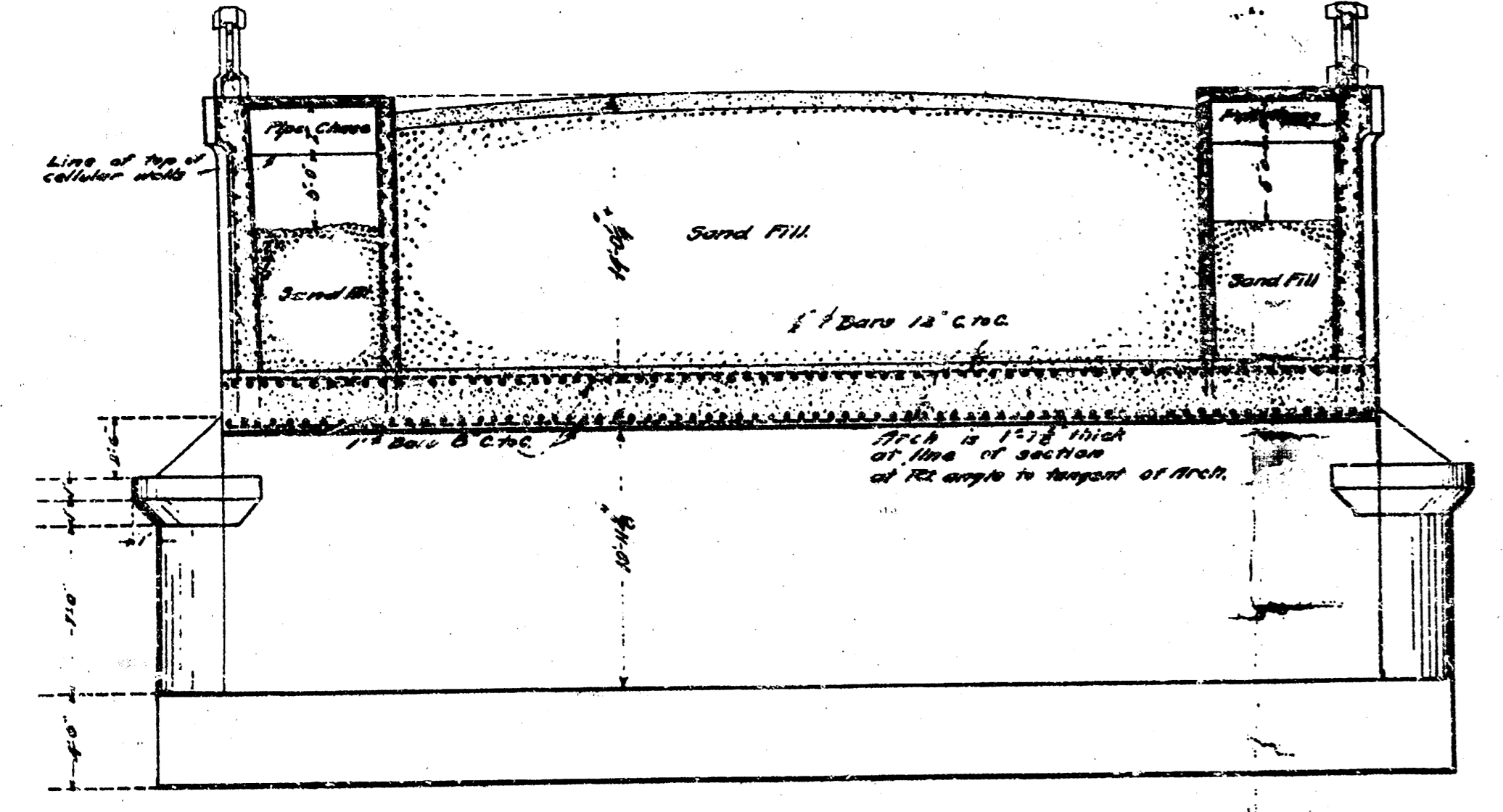
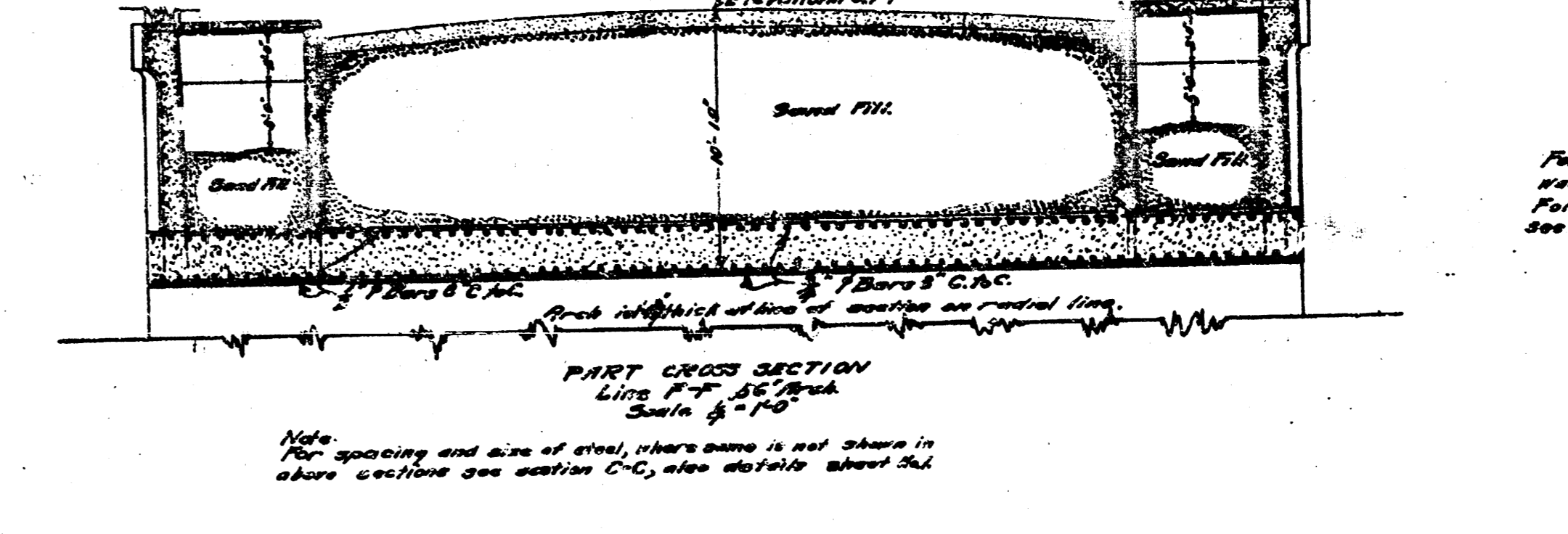
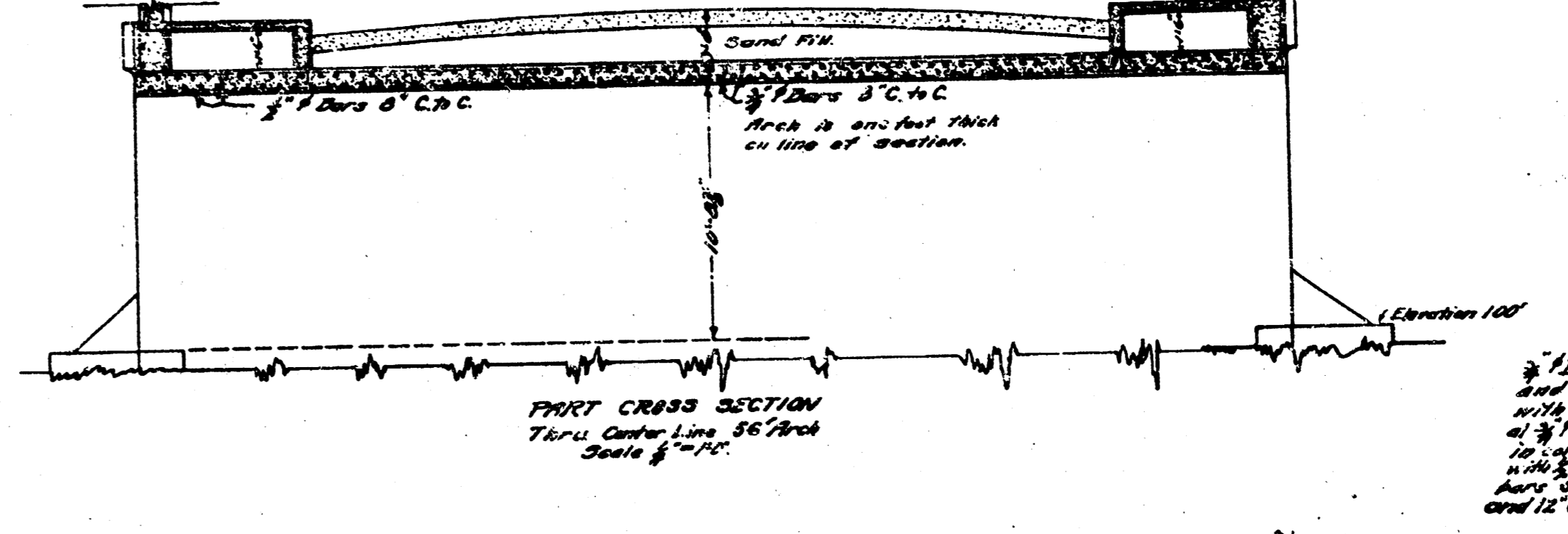
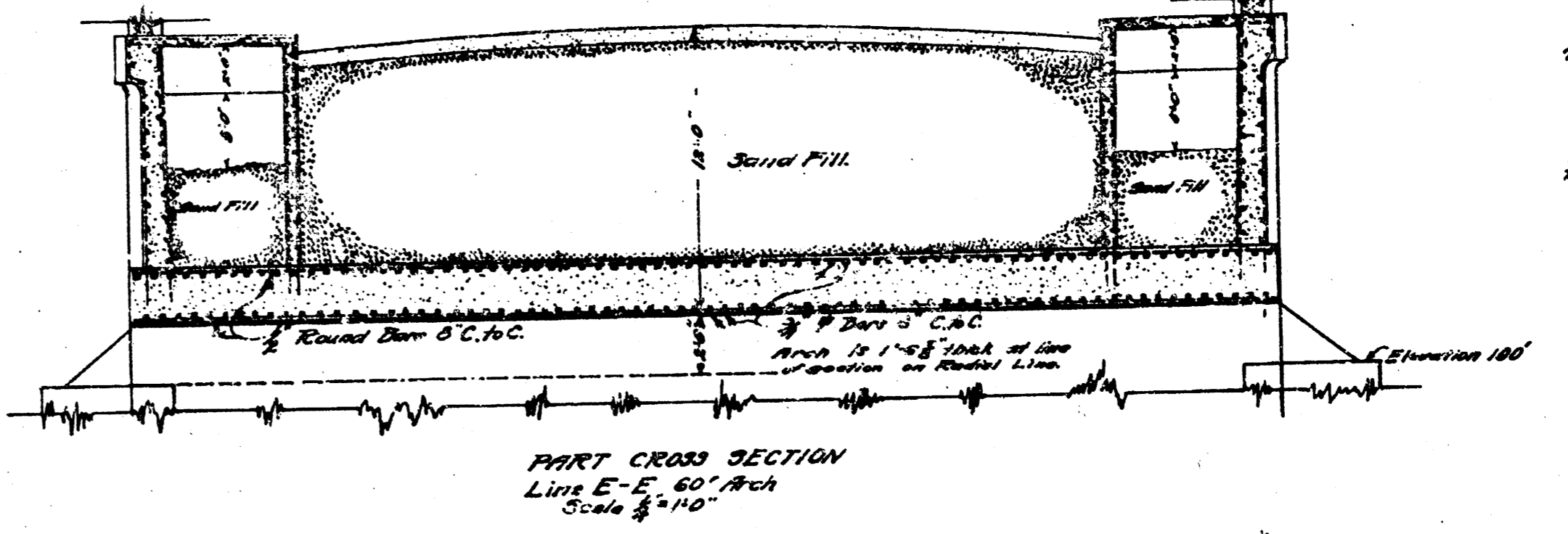
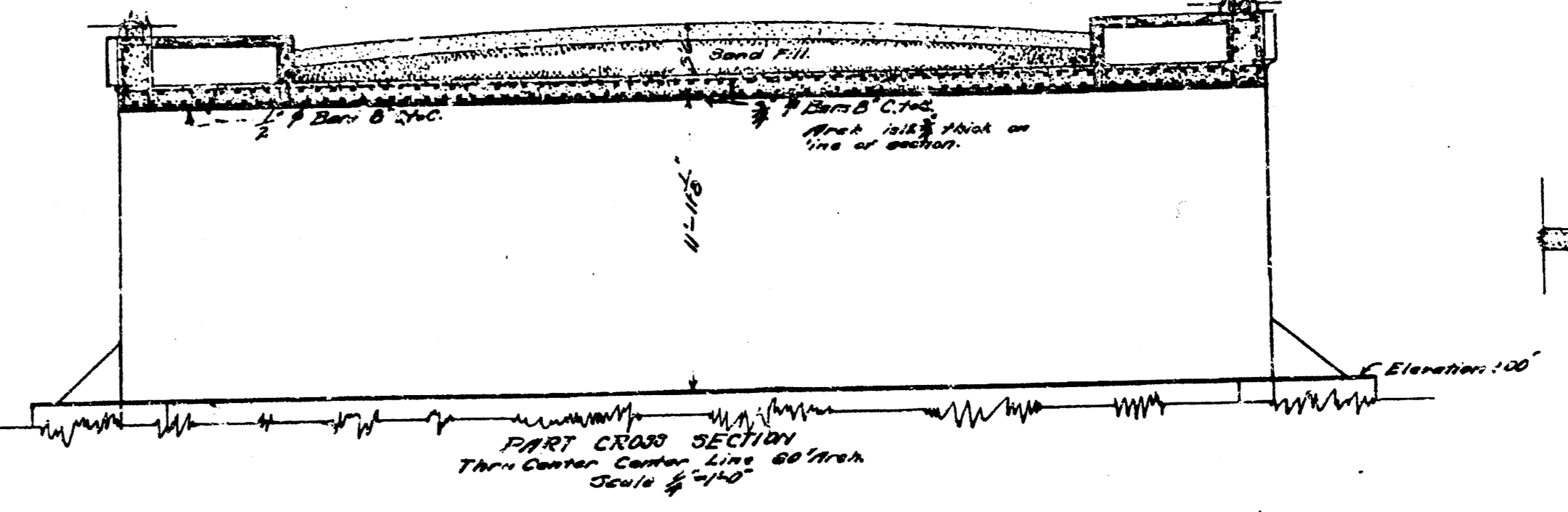
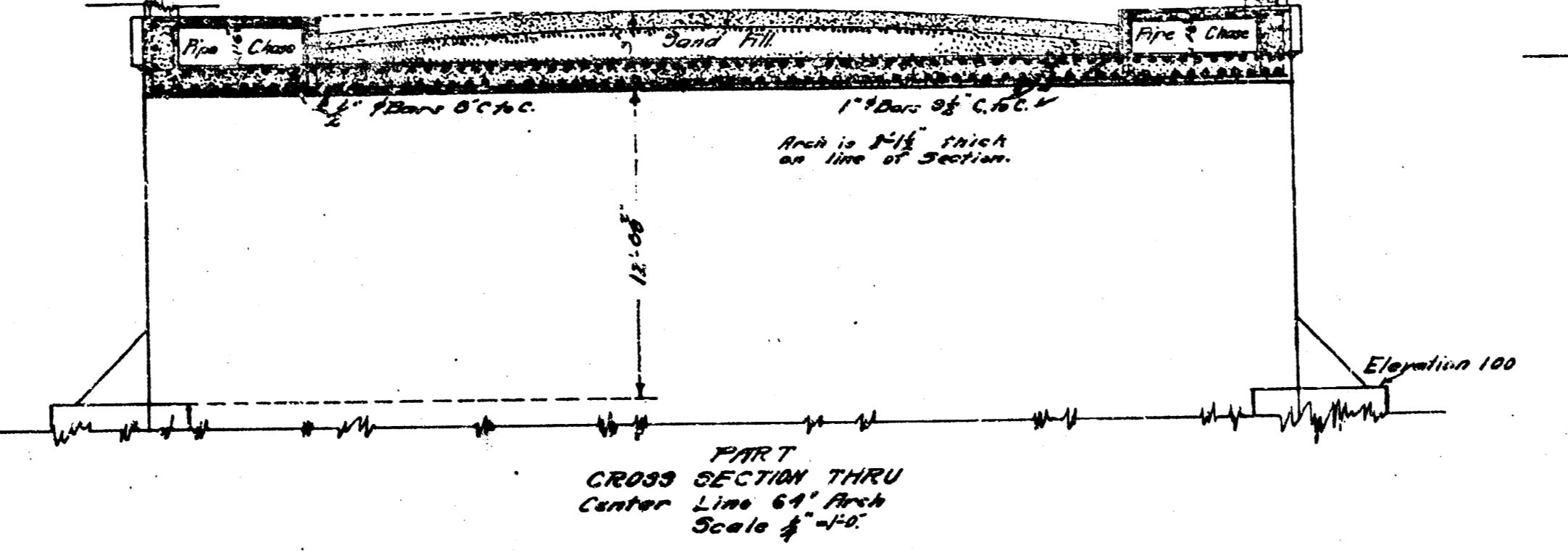
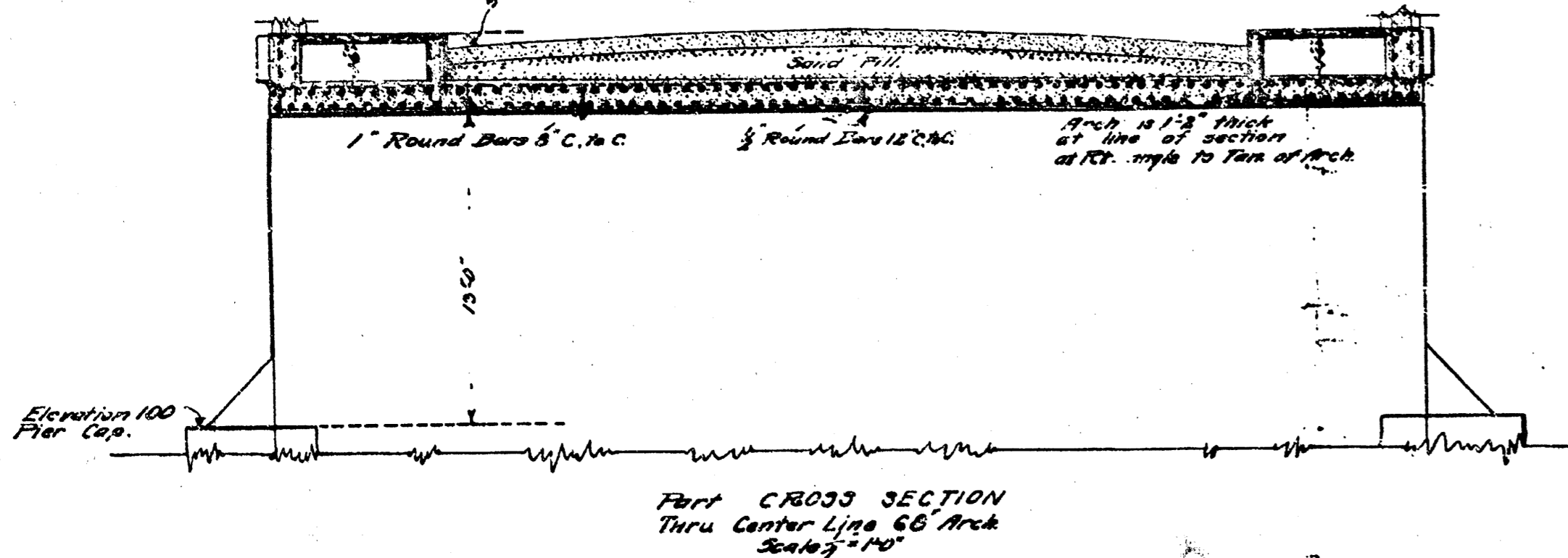


ELEVATION OF COUNTERFORT Scale 1/4"

MAPLE STREET BRIDGE

MAPLE ST. BRIDGE
 BIG ARKANSAS RIVER
 MENA, KANSAS - MAY 1921
 H.L. BISHOP - CIV. ENGR.

WTD
 1/21/1911
 H.W.

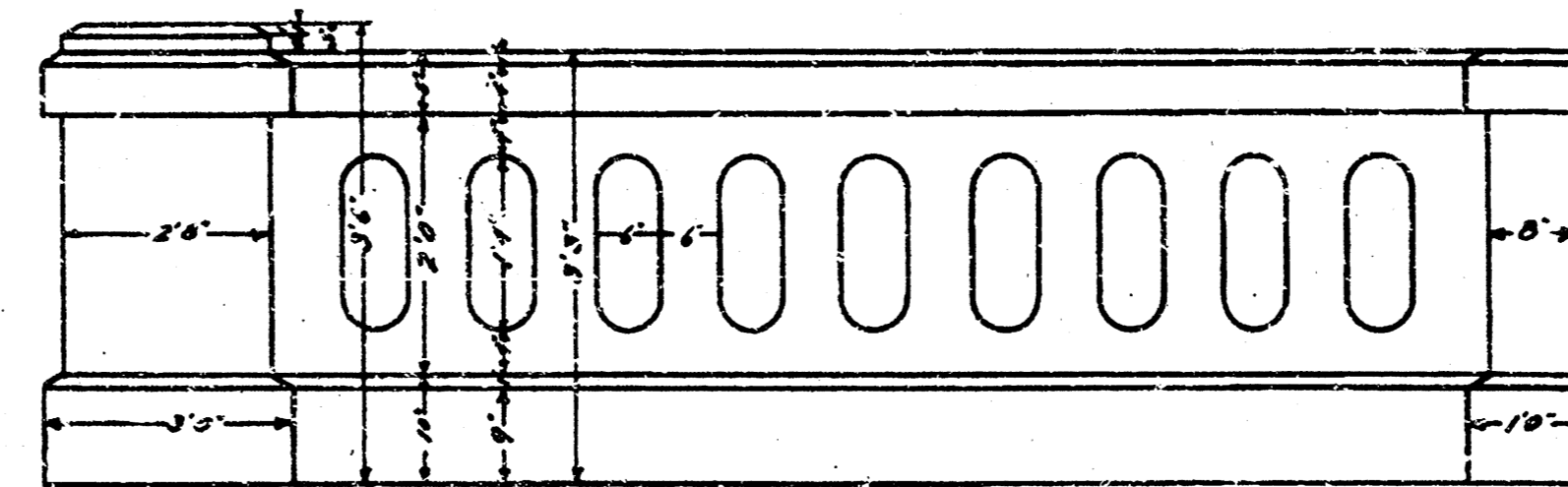
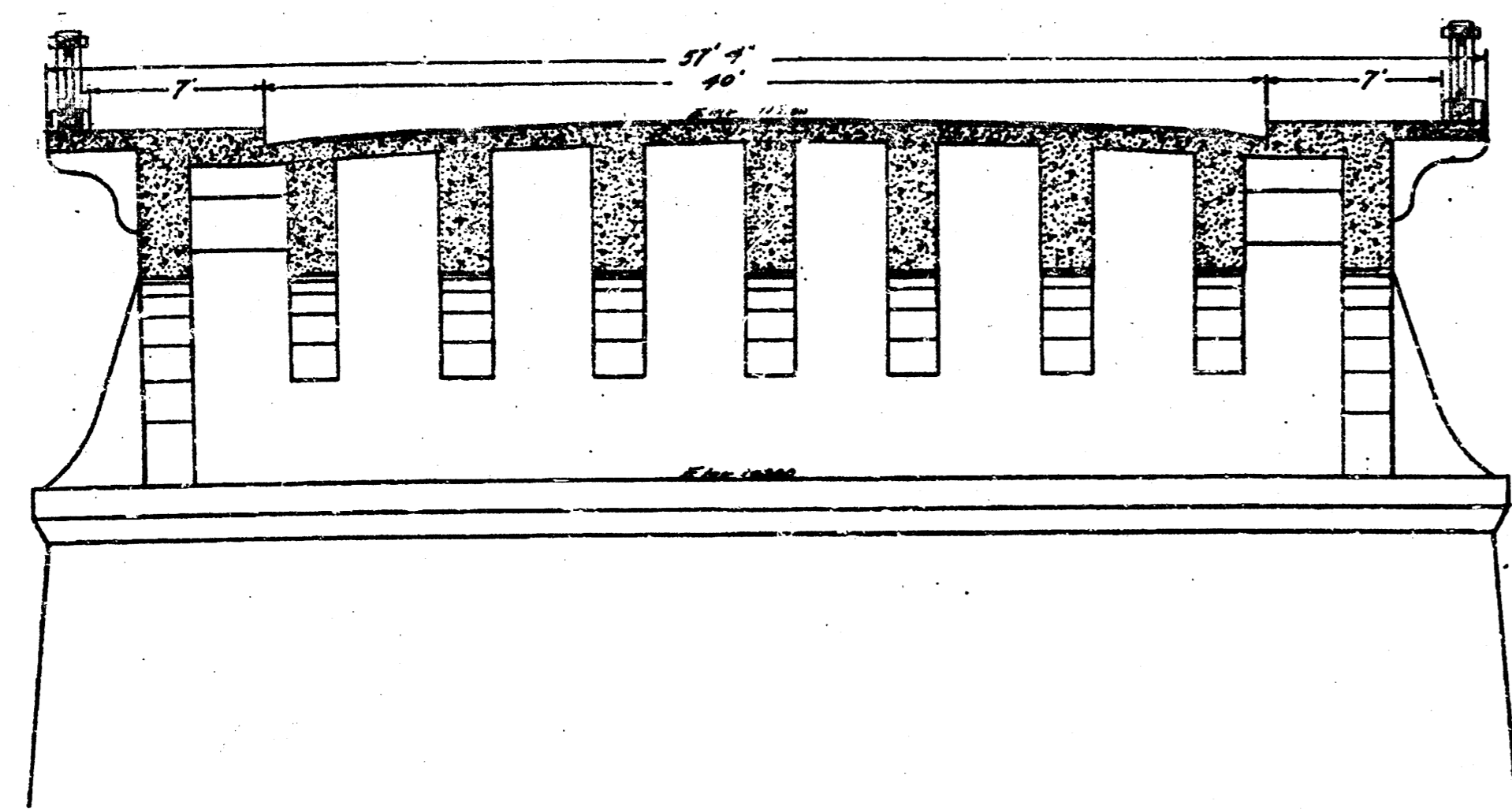
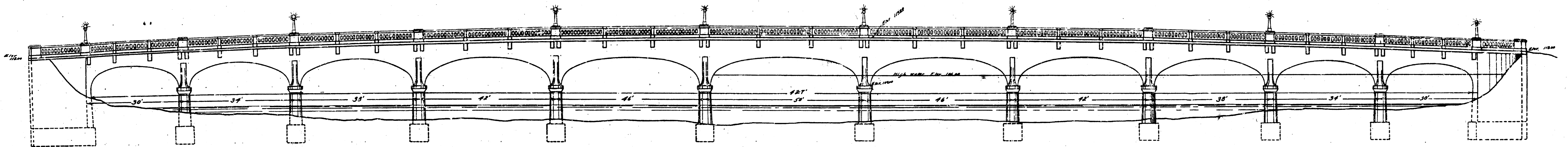


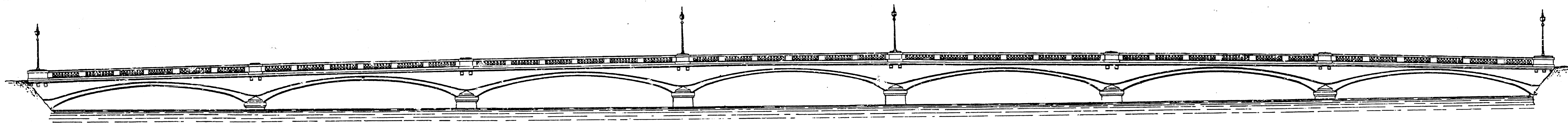
MAPLE STREET BRIDGE

Note: The spacing and size of steel, where same is not shown in above sections see section C-C, also details sheet 101.

MAPLE ST. BRIDGE
 BIG ARKANSAS RIVER
 NECHITA, KANSAS - MAY, 1911
 E.L. BRIDGMAN, CIVIL ENGINEER

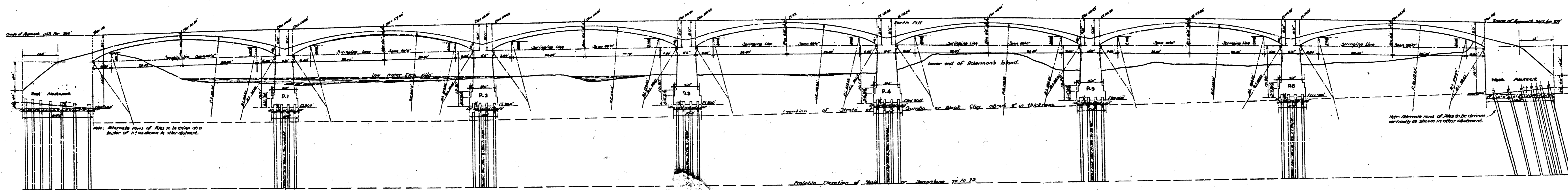
PROPOSED
MAPLE STREET BRIDGE



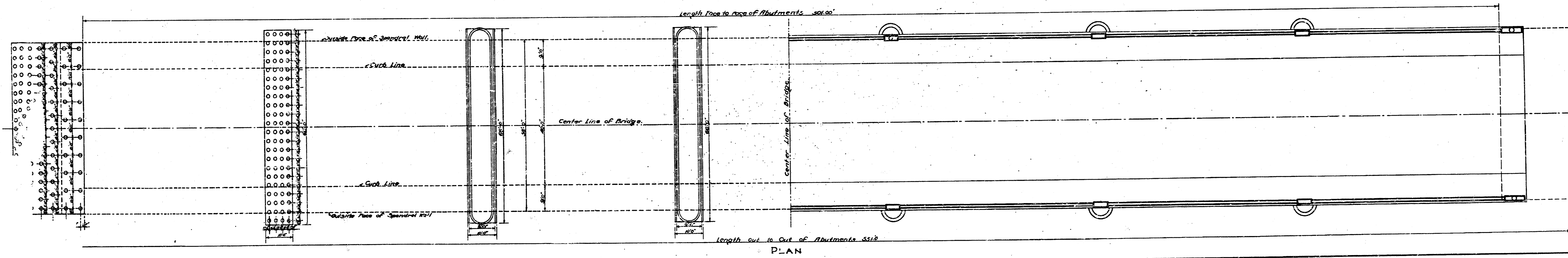


ELEVATION

CONCRETE STEEL ARCH BRIDGE
 MELAN SYSTEM
 OVER THE
 ARKANSAS RIVER AT DOUGLAS AVE.
 WICHITA, KANSAS.
 Scale - 1 in. = 10 ft.
 June 17 1907

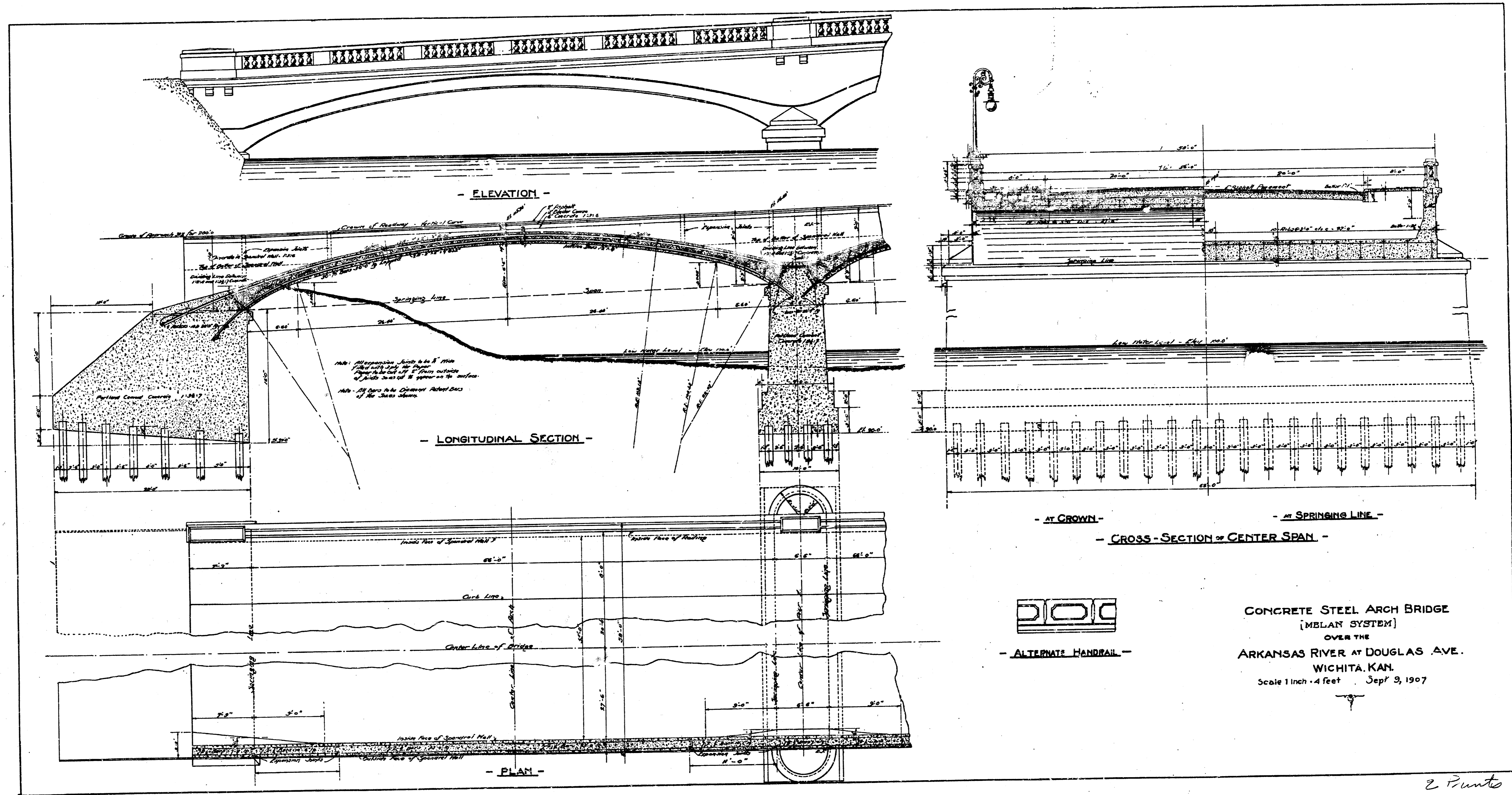


LONGITUDINAL SECTION



PLAN

1 Print



CONCRETE STEEL ARCH BRIDGE
 (MELBY SYSTEM)
 OVER THE
 ARKANSAS RIVER AT DOUGLAS AVE.
 WICHITA, KAN.
 Scale 1 inch = 4 feet Sept. 3, 1907

2 Prints