

STATE OF KANSAS  
DEPARTMENT OF TRANSPORTATION

PROJECT NO.	87 U 0853-01	DATE	10/84	SCALE	1" = 100'
472 76 245 812 89000 000 007 FHWA NO. 87 BRM 6150 (003)					

INDEX OF SHEETS

- Title Sheet
- Plan Profile
- Channel Excavation & Compacted Embankment
- 4-7 Steel Plate Guard Fence Details
- 8-9 Bridge Details
- 10 Bridge Excavation
- 11 Supports and Spacers for Reinforcing Steel
- 12 Temporary Project Water Pollution Control
- 13 Summary of Quantities
- 14 Traffic Control Plan
- 15-16 Cross Sections

Deleted

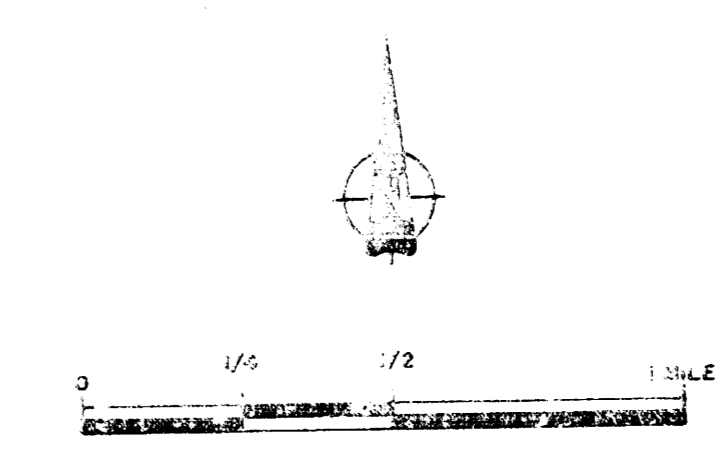
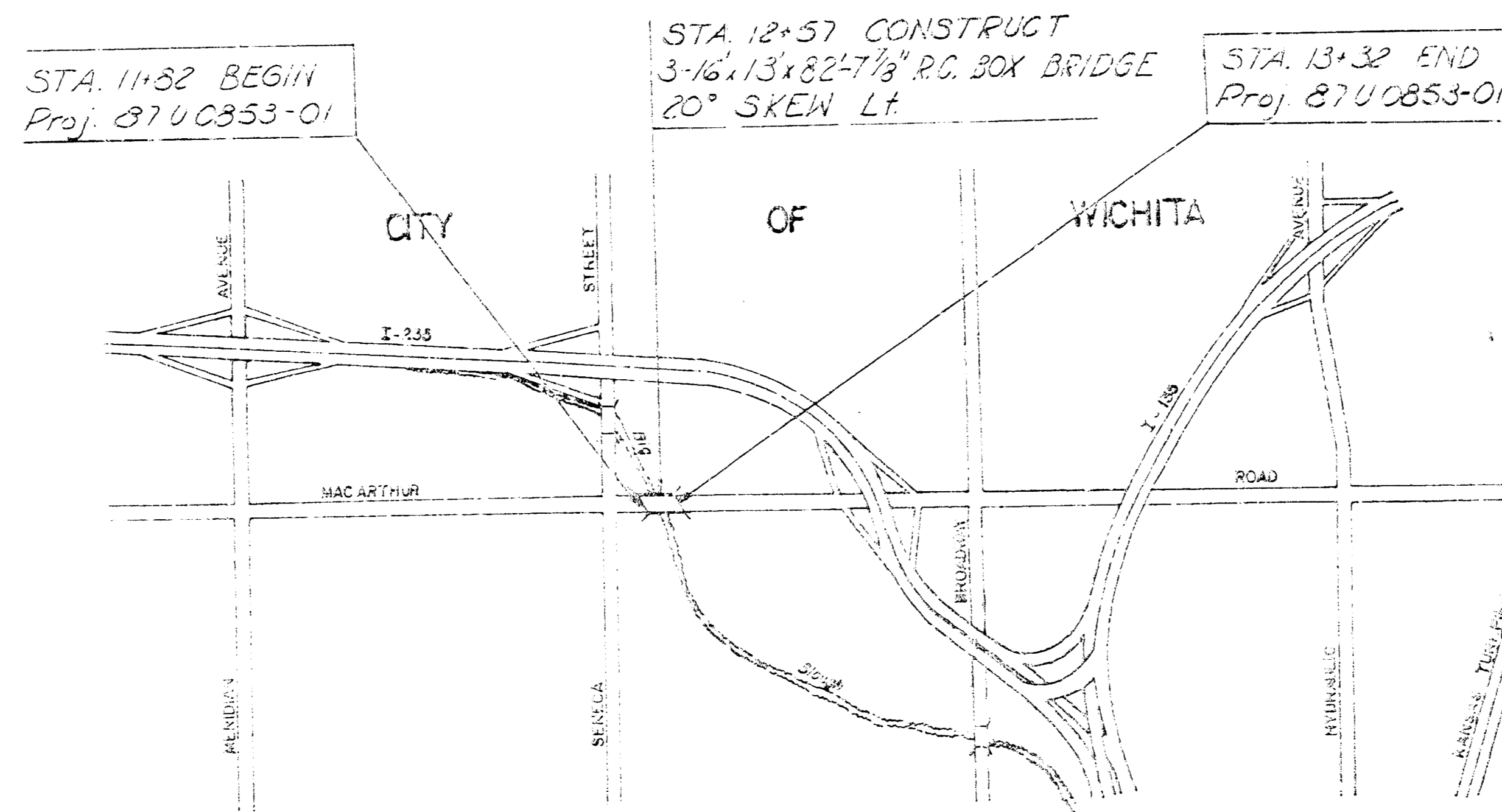
PLAN AND PROFILE OF PROPOSED  
STATE HIGHWAY

BRIDGE  
GRADING

FEDERAL AID PROJECT  
87 U 0853-01  
MACARTHUR ROAD BRIDGE  
OVER  
THE BIG SLOUGH

Completed - Construction Plans  
87 U 0853-01 Project on Ground  
Prepared By Mike Lindesak Const. Engineer

CITY OF WICHITA PROJECT  
472 76 245 81289 000 000 001



MICROFILMED  
YEAR 1988  
ROLL NO. 644/92

DESIGN DESIGNATION  
Traffic Count; 9,848 V.P.D., 1983  
Traffic Count; 9,170 V.P.D., 2000  
Design Speed 40 M.P.H.  
Design Load HS-20-44

CONVENTIONAL SIGNS

COUNTY LINE	RETAINING WALL
CORPORATE LIMITS	CENTER LINE OF PROJECT
STATE OR NATIONAL LINE	LEVEE
TOWNSHIP LINE	CULVERTS
SECTION LINE	DROP INLETS
GRANT LINE	ACCESS CONTROL
FENCE LINE	POWER LINE
GUARD FENCE	TELEPHONE OR TELEGRAPH LINE
UNFENCED PROPERTY	MARSH
RIGHT OF WAY LINE	HEDGE
TRAVELLED WAY	TREES
RAILROADS	GRADE ELEVATION

GROSS LENGTH OF PROJECT 150.00 FT.  
EXCEPTIONS 0.00

ADDITIONS 0.00  
NET LENGTH OF PROJECT 150.00 FT. 0.028 MILES  
NET LENGTH OF BRIDGES 54.62 FT. 0.010 MILES  
NET LENGTH OF ROAD 55.38 FT. 0.018 MILES

NOTE:  
The Contractor shall be responsible for preserving property irons. The Contractor shall be required to re-establish any property irons which are damaged or destroyed by his construction operations. Such irons shall be re-established by a licensed land surveyor or a licensed professional engineer in accordance with state laws.

APPROVED BY: Mike Lindesak DATE: 5-10-84  
 MIKE LINDESAK, P.E.  
 CITY ENGINEER  
 CITY OF WICHITA

RECOMM. FOR APPROVAL: DATE: 5-10-84  
Raymond E. Johnson  
 CHIEF, BUREAU OF RURAL AND URBAN DEVELOPMENT  
 KANSAS DEPARTMENT OF TRANSPORTATION

APPROVED BY: DATE: 5-10-84  
W. J. [Signature]  
 STATE TRANSPORTATION ENGINEER  
 KANSAS DEPARTMENT OF TRANSPORTATION

DESIGNED BY: DATE: 5-10-84  
 R. S. DELAMATER & ASSOCIATES INC.  
 CONSULTING ENGINEERS  
 WICHITA, KANSAS

RECOMM. FOR APPROVAL: DATE: 5-10-84  
Red [Signature]  
 ENGINEER  
 FEDERAL HIGHWAY ADMINISTRATION  
 DEPARTMENT OF TRANSPORTATION

APPROVED BY: DATE: 5-10-84  
[Signature]  
 DIVISION ADMINISTRATOR  
 FEDERAL HIGHWAY ADMINISTRATION  
 DEPARTMENT OF TRANSPORTATION

FILMED FROM THE BEST AVAILABLE COPY....

P.O.T. Sta 2+00 E Extended =  
Sta 25+25 Project 87U-0754-01  
25.0' South to thimble @ Section Corner

P.O.T. Sta 10+00 Iron Pipe @ E  
42.32' NNW to 20d Nail in PP  
121.08' NNE to 20d Nail in PP  
55.14' SSW to 20d Nail in PP

P.O.T. Sta 15+00 Iron Pipe @ E  
41.71' NNE to 60d Nail in PP  
122.21' NNW to 60d Nail in PP  
54.00' SSE to 20d Nail in PP

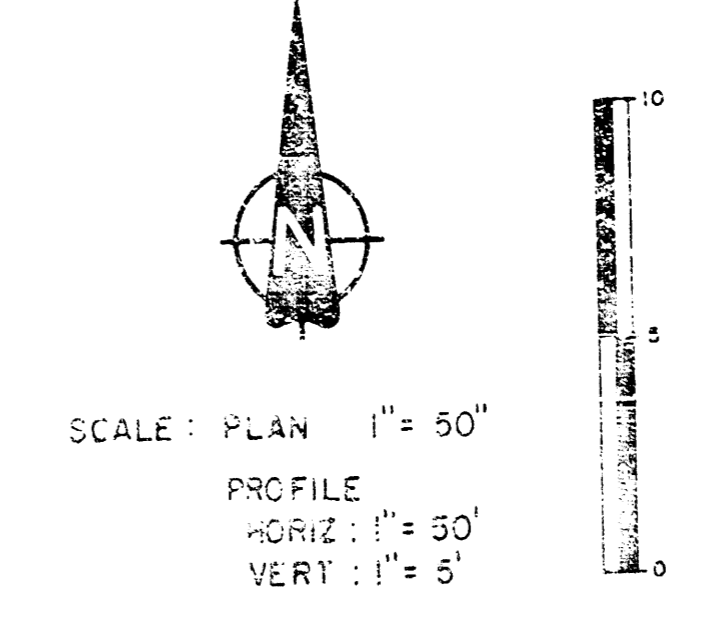
P.O.T. Sta 30+44.85 Iron @ E  
25'-0" South to Thimble  
@ 1/4 Section Corner.

FHWA REG NO.	STATE	PROJECT NUMBER	FISCAL YEAR	SHEET NO.	TOTAL SHEETS
7	KANSAS	87-U-0853-01	1984	2	16

472 76 245 812 89000 000 007

SW 1/4 Sec. 8 - T28S-91E  
Platted residential

City Service Oil & Gas Co.  
Storage & Truck Loading Facility



**GENERAL NOTES**  
Public and private utility facilities shall be moved or adjusted as necessary by the owners to fit the new construction, unless otherwise noted on the Plans or in the proposal.  
Publicly owned and maintained street signs will be removed by the Traffic Operations and Maintenance Division of the City of Wichita after installation of project construction signing. Such signs will be replaced after the project is completed by the same Traffic Operations and Maintenance Division.

Incorporate rock excavation in compacted fill; cracks not over 0.3 cu ft.

The Contractor shall remove the existing structural concrete of existing bridge with four spans & 10 feet in width to become the property of the Contractor and to be removed from the site. \* Structure is 10040001000000

See Sheet 3 for limits of construction

CHANNEL CROSS SECTION  
AT THE BRIDGE

See sheet 3 for limits of common excavation and compacted embankment

- UTILITY COORDINATION**  
CITY OF WICHITA, KANSAS  
Paving Ph. 262-4440  
Drainage Ph. 262-4235  
Traffic Ph. 262-4123  
Water Ph. 262-4555  
Southwestern Bell Telephone Co Ph. 258-2244  
Kansas Gas & Electric Co Ph. 261-3226  
Gas Service Co Ph. 263-1511  
Continental Pipeline Co Ph. 281-2181  
Cities Service Gas Co Ph. 524-3621

Transfer P.O.T. from 25+25 to 11+15  
City Service Oil & Gas Co.  
Northwest Central Pipeline Co.  
Pipeline Facility

City Service Oil & Gas Co.  
Natural Gas Plant

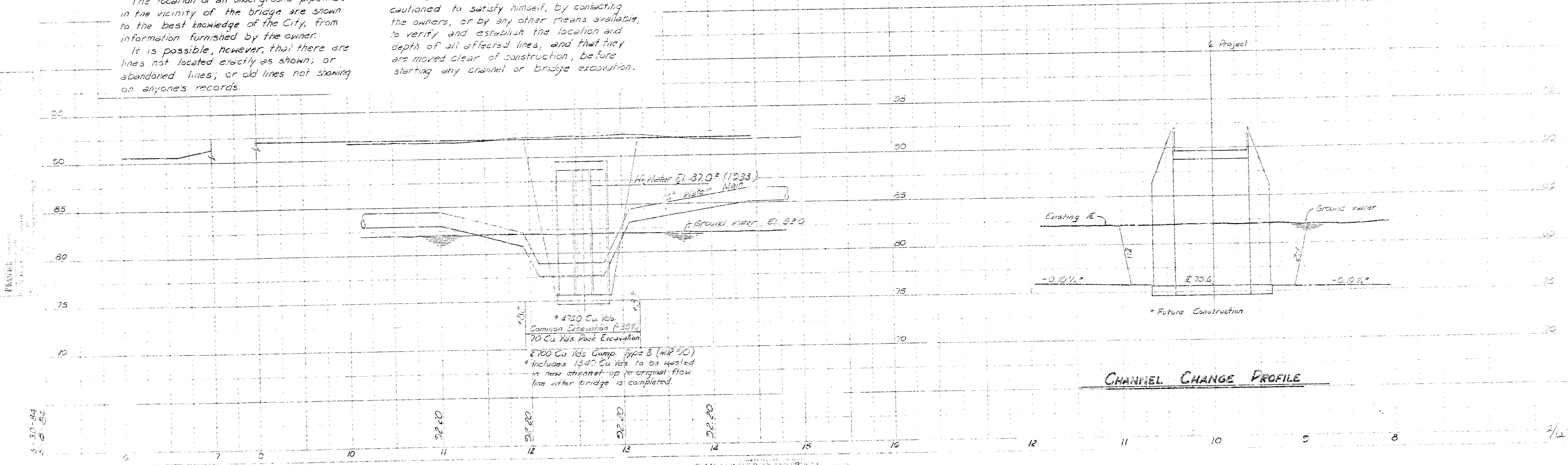
- B.M. Datum: C.O.C. City of Wichita 1187.4 M.S.L.  
B.M. #1 City Std. Disc. 26' North & 28.5' West of Section Corner Seneca & Mac Arthur Elev. 80.37' ±  
B.M. #2 RR Spike in PP 35' Lt Sta 11+15 Elev. 80.27'  
B.M. #3 RR Spike in PP 31' Lt Sta 16+57 Elev. 80.81'

\* Note inlet & elevations on all pipes, set 6" below existing ditch grade.

**SPECIAL CONSTRUCTION NOTE**

The location of all underground pipelines in the vicinity of the bridge are shown to the best knowledge of the City, from information furnished by the owner. It is possible, however, that there are lines not located exactly as shown; or abandoned lines; or old lines not showing on anyone's records.

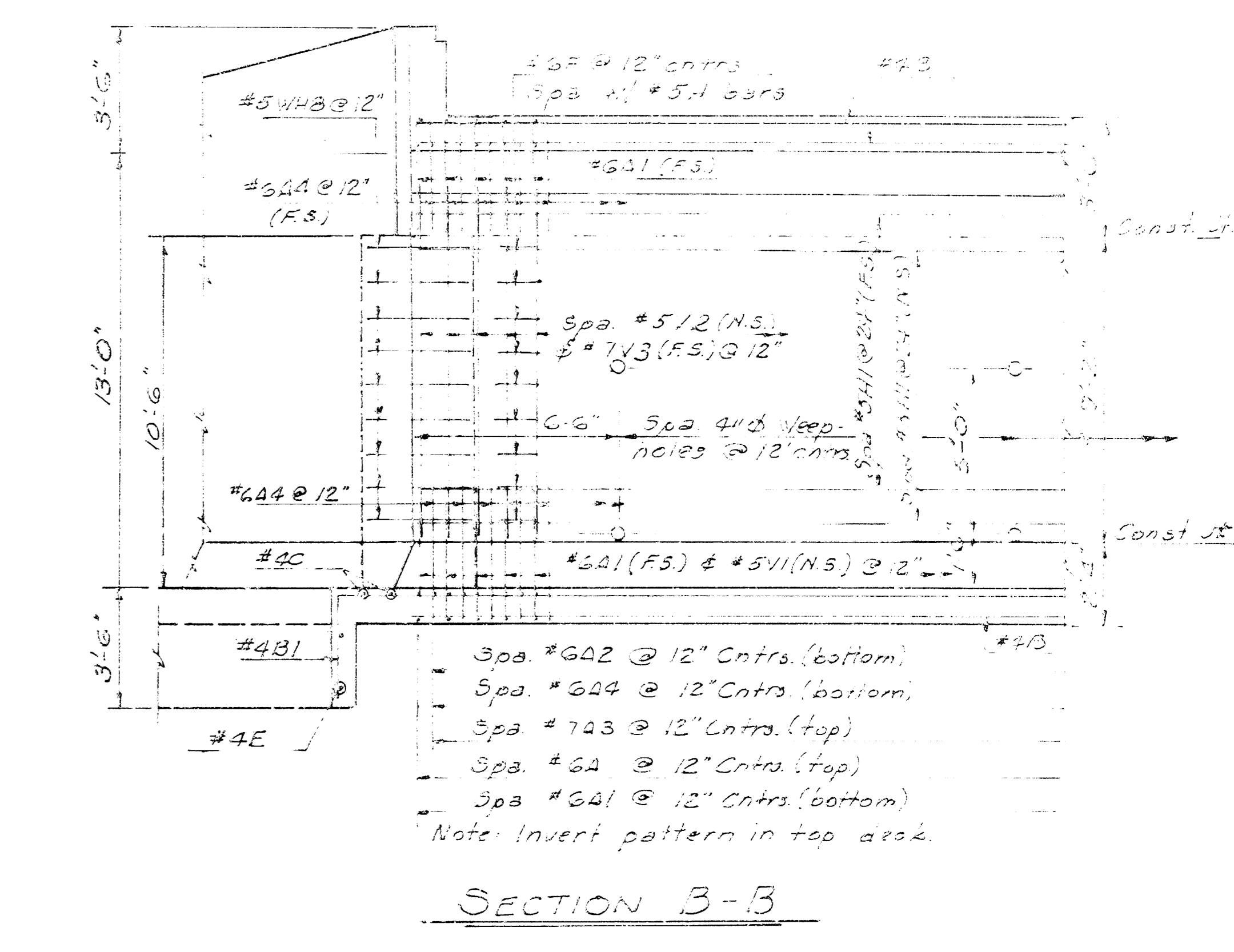
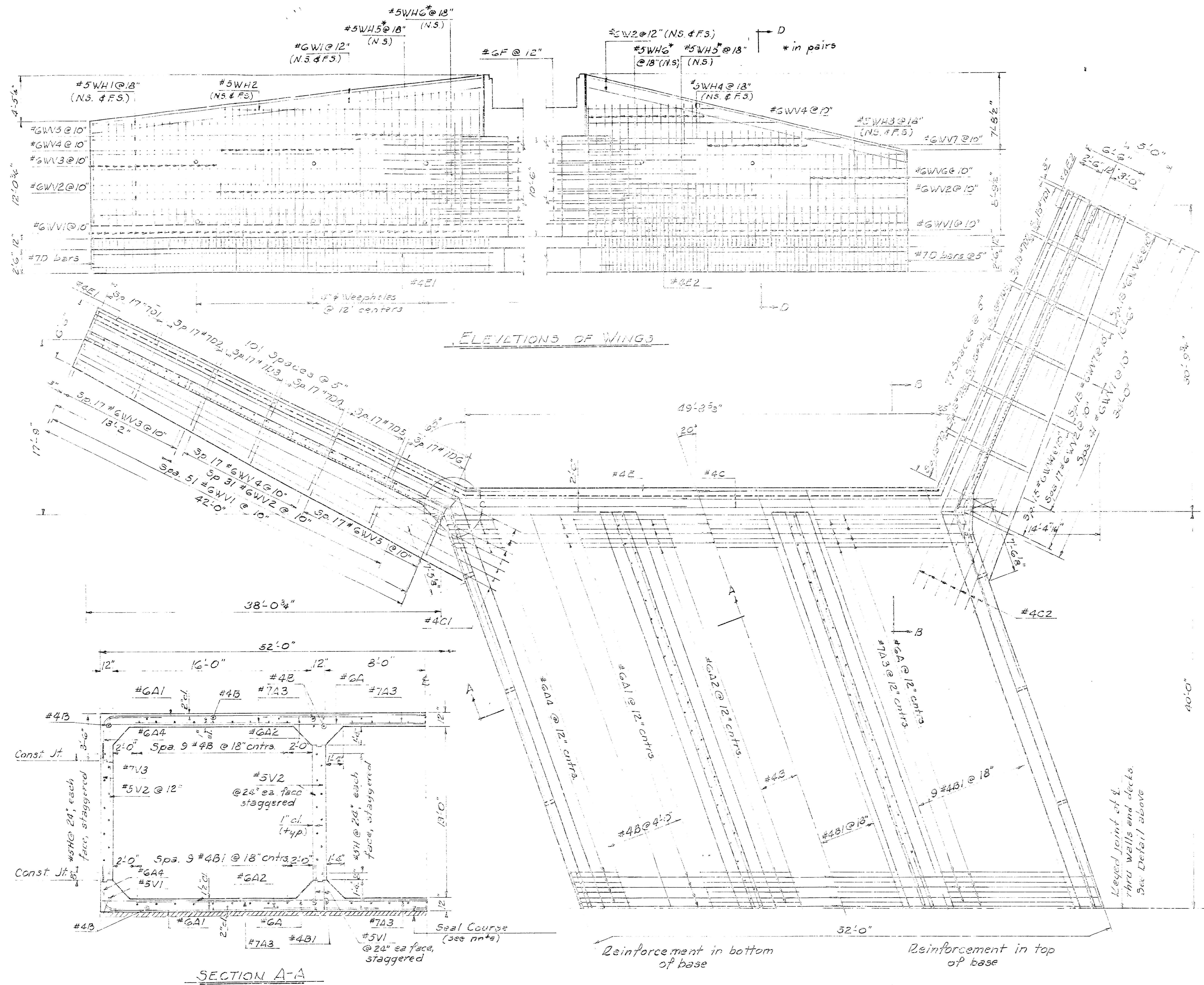
The contractor is therefore especially cautioned to satisfy himself, by contacting the owners, or by any other means available, to verify and establish the location and depth of all affected lines; and that they are moved clear of construction, before starting any channel or bridge excavation.



CHANNEL CHANGE PROFILE

FILMED FROM THE BEST AVAILABLE COPY....





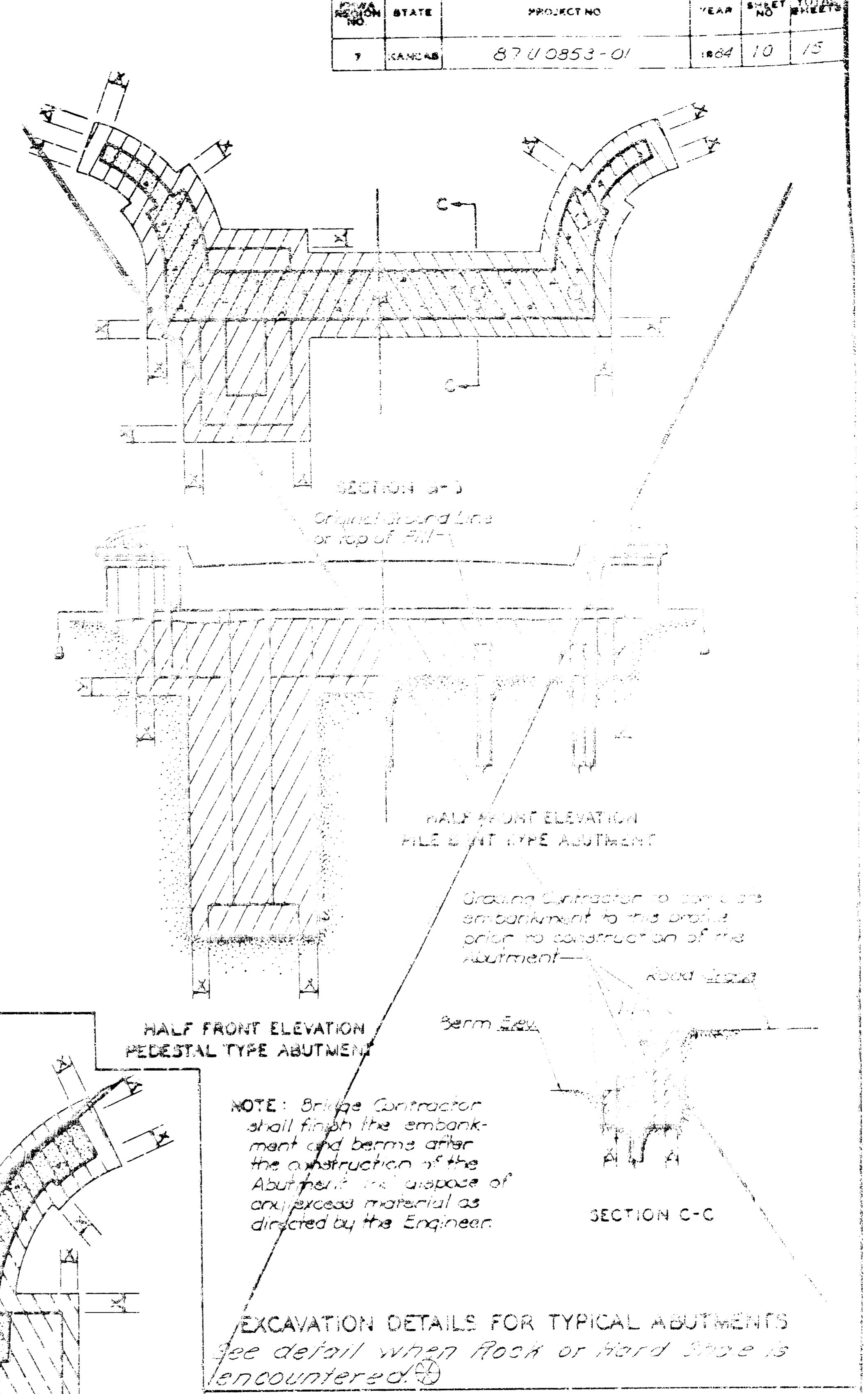
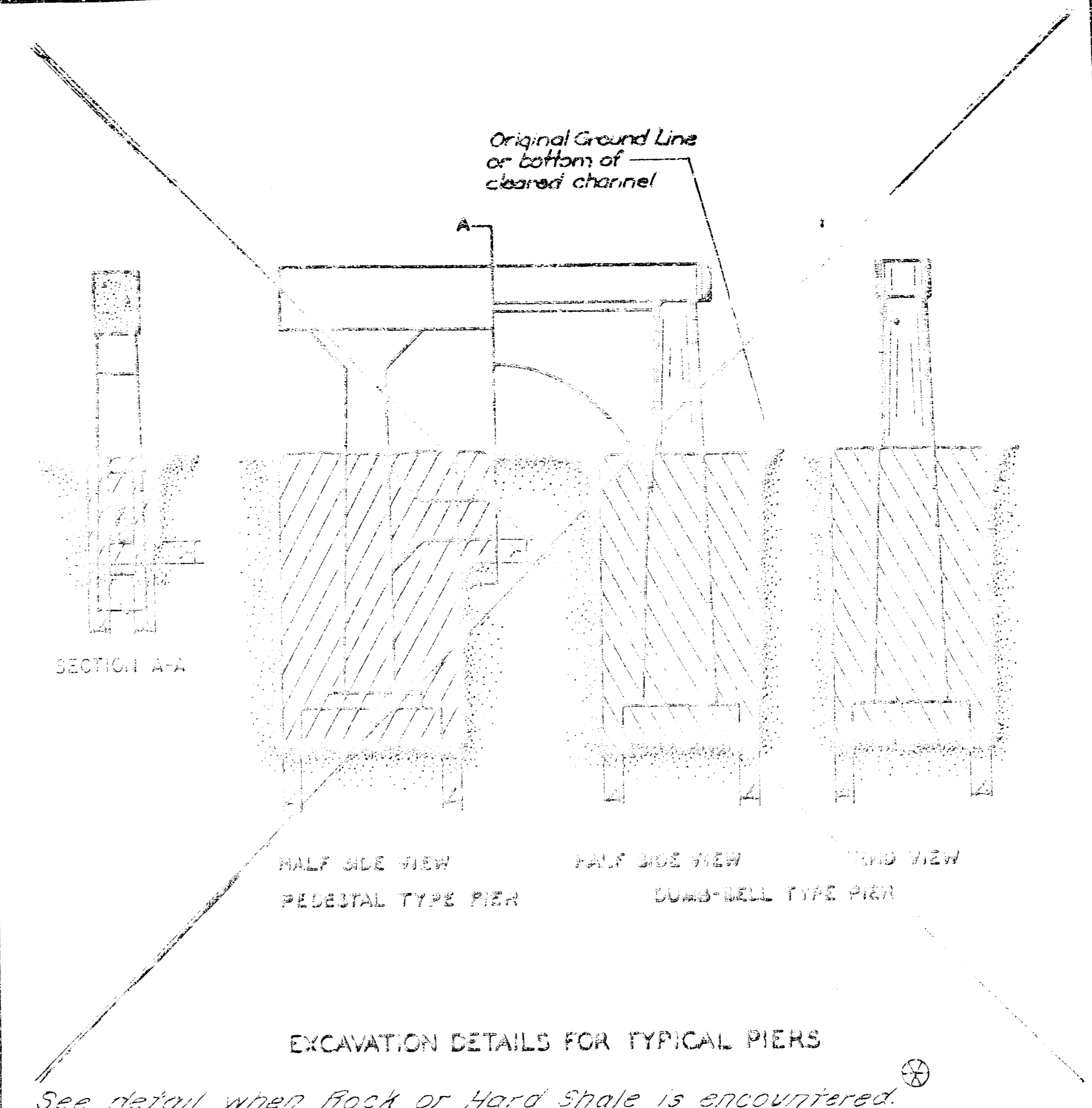
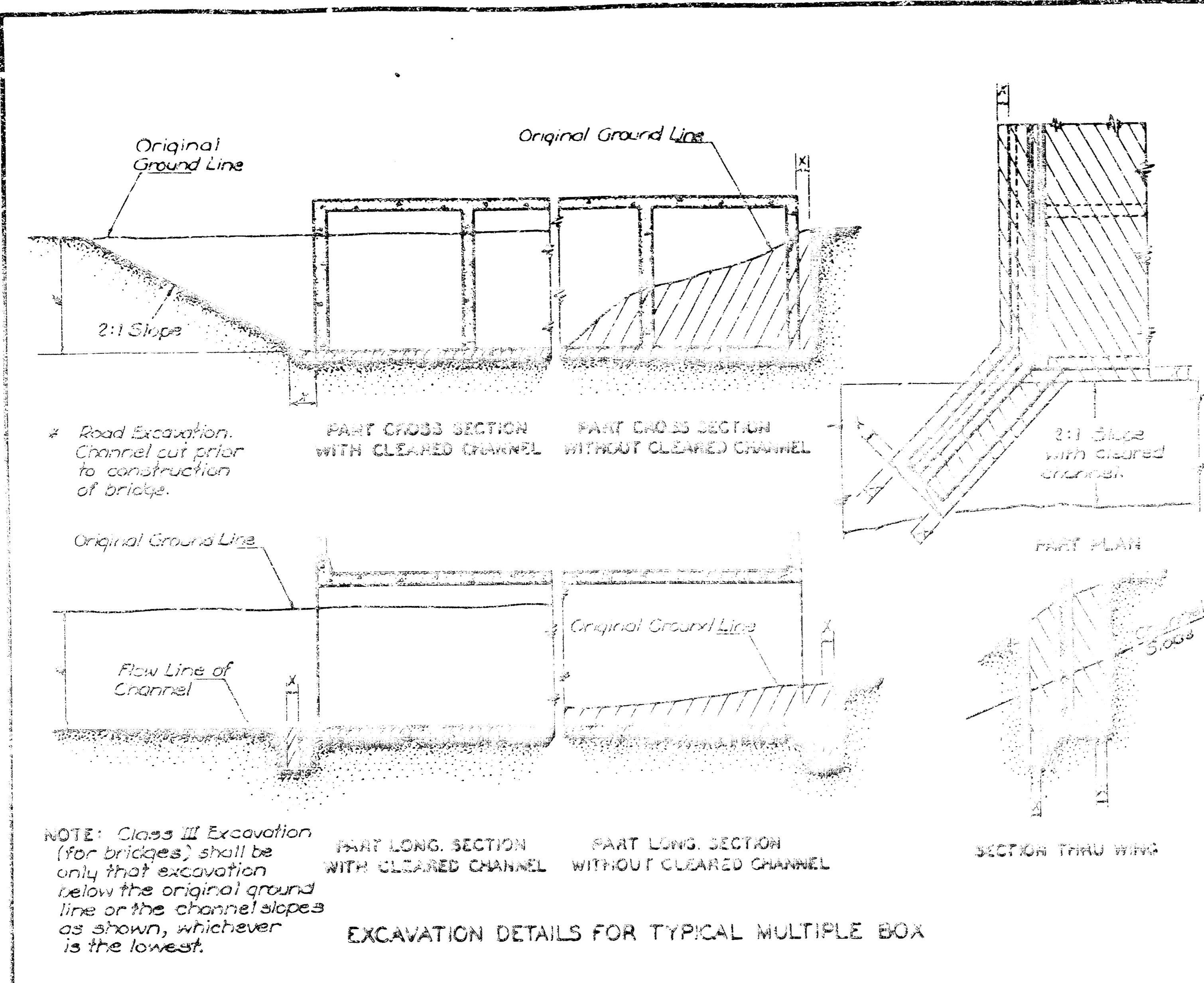
NOTE:  
Seal Course consisting of 3" of Class A Concrete shall be constructed only if ordered by the Engineer. No reinforcing steel shall be placed until the Seal Course has gained sufficient strength to permit working upon it without injury.

CITY OF WICHITA			
MAINSTAY ROAD BRIDGE			
OVER THE BIG SLOUGH			
PROJECT #278 2-3 312 3-12 3-12 3-12			
TRIPLE 16x13x82-7 7/8" RCBB			
BRIDGE DETAILS I			
H. S. JELAMATER & ASSOCIATES INC.			
CONSULTING ENGINEERS			
WICHITA, KANSAS			
DES. C.P.S.	CHK. C.P.S.	EXP. J.E.L.	APP. J.E.L.
DATE: May, 1984	SCALE: 1/2" = 1'-0"	DATE: 02-24-84	1/2"

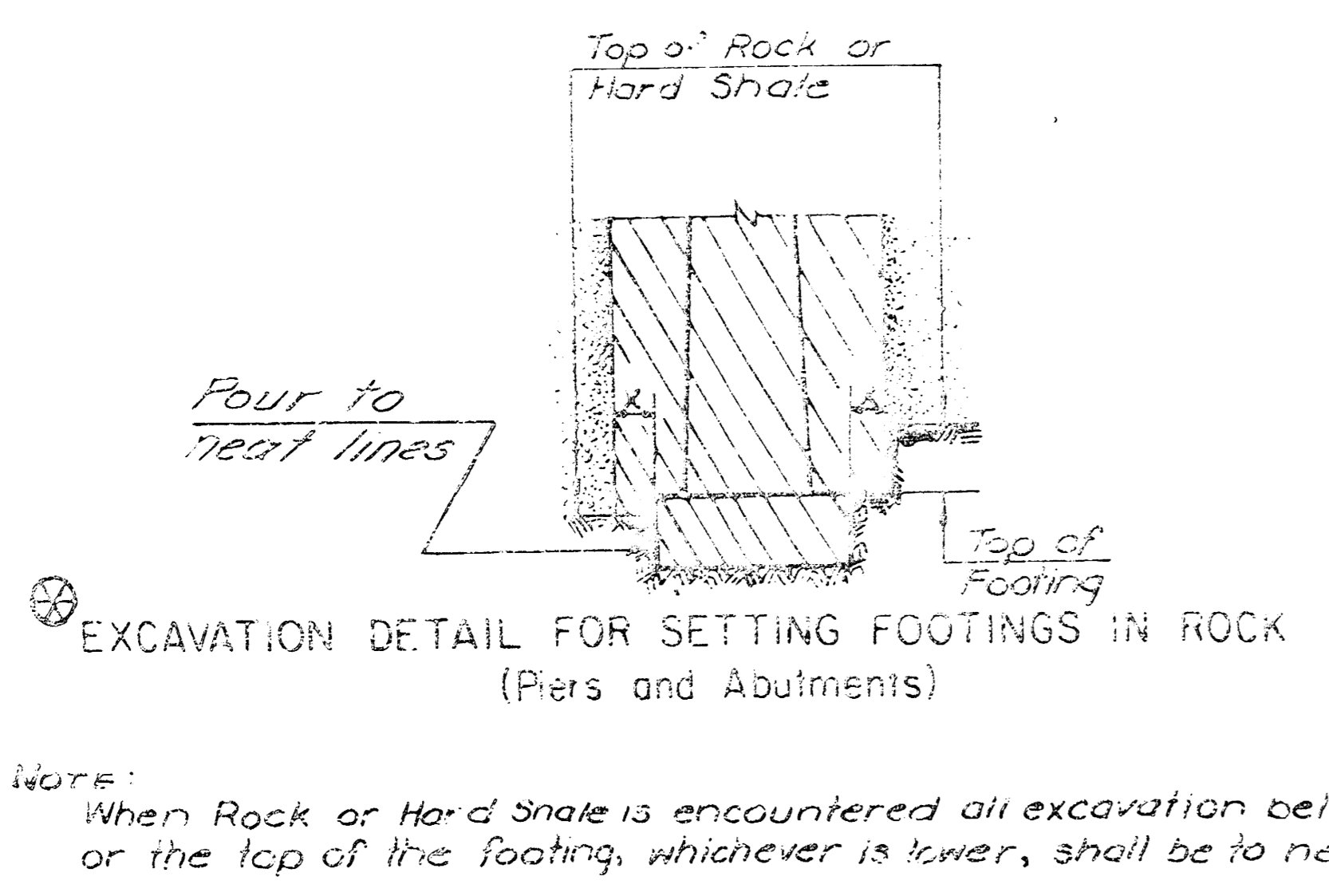
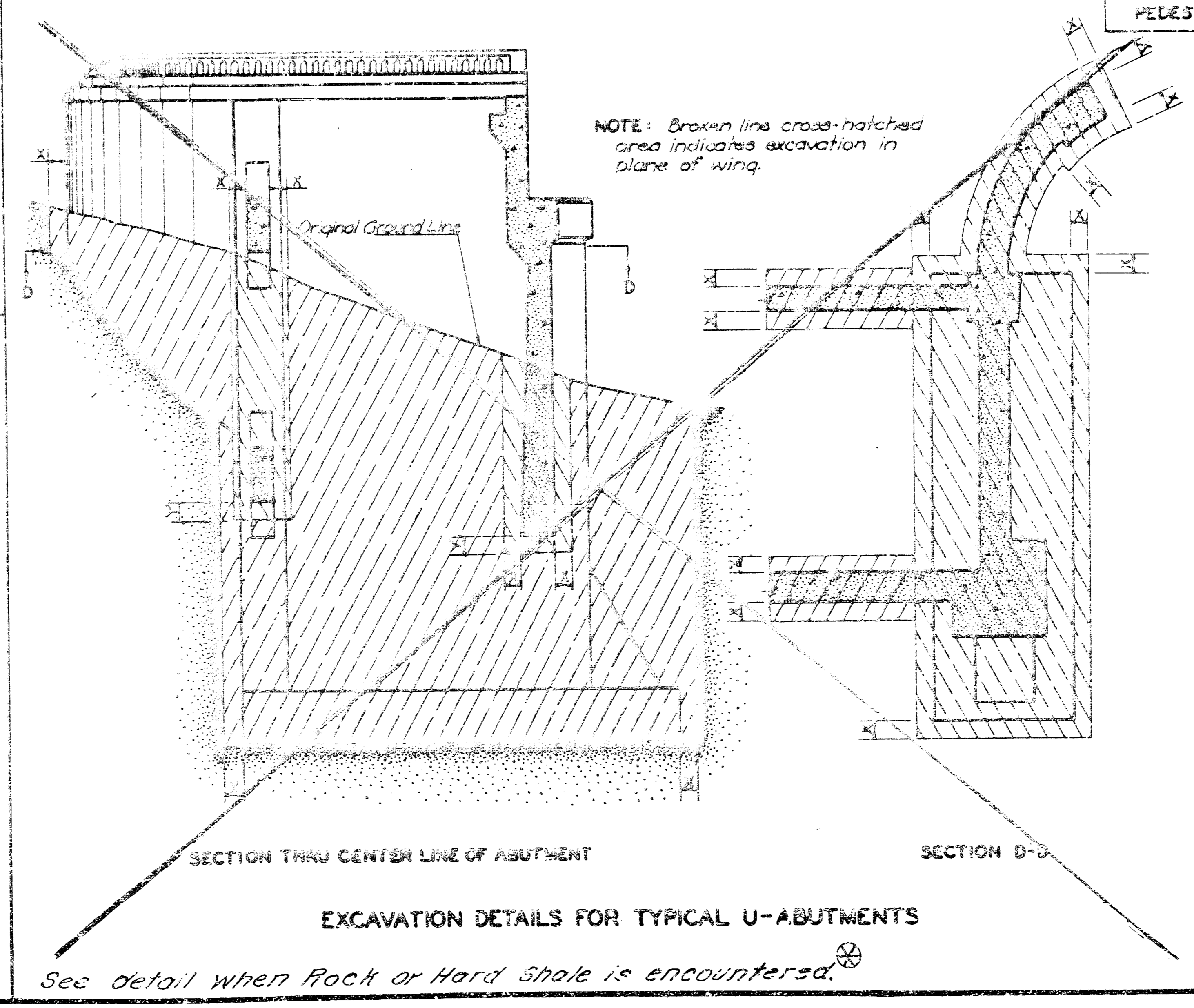
FILMED FROM THE BEST AVAILABLE COPY



REGION	STATE	PROJECT NO.	YEAR	BUSKET	TOTAL
7	KANSAS	87-0853-01	1984	10	15



Sides of trenches in hard or compacted soil including embankments shall be shored, sheeted, braced or otherwise supported when the trench is more than 5 feet in depth and 8 feet or more in length. In lieu of the shoring, the sides of the trench above the 5 foot level may be sloped to preclude collapse. The slope for average soils shall be 1:1. If the angle of repose of the soil is less, flatter slopes shall be required.



NOTE: All bridge excavation shall be computed on the basis of the cross-hatched areas and boundary lines indicated on this sheet. Dimension "X" shall be 2'-0" unless indicated otherwise on the general plans. Dimension "Y" shall be 1'-6" unless indicated otherwise on the general plans.

NO.	DATE	REVISIONS	BY	APP.
1	10/25/83	Revised Detail of Rock Shale	W.A.B.	
2	7/31/83	Revised Limits of Rock Shale	W.A.B.	
3	10/17/82	Revised "X" Dimension	W.A.B.	

KANSAS DEPARTMENT OF TRANSPORTATION

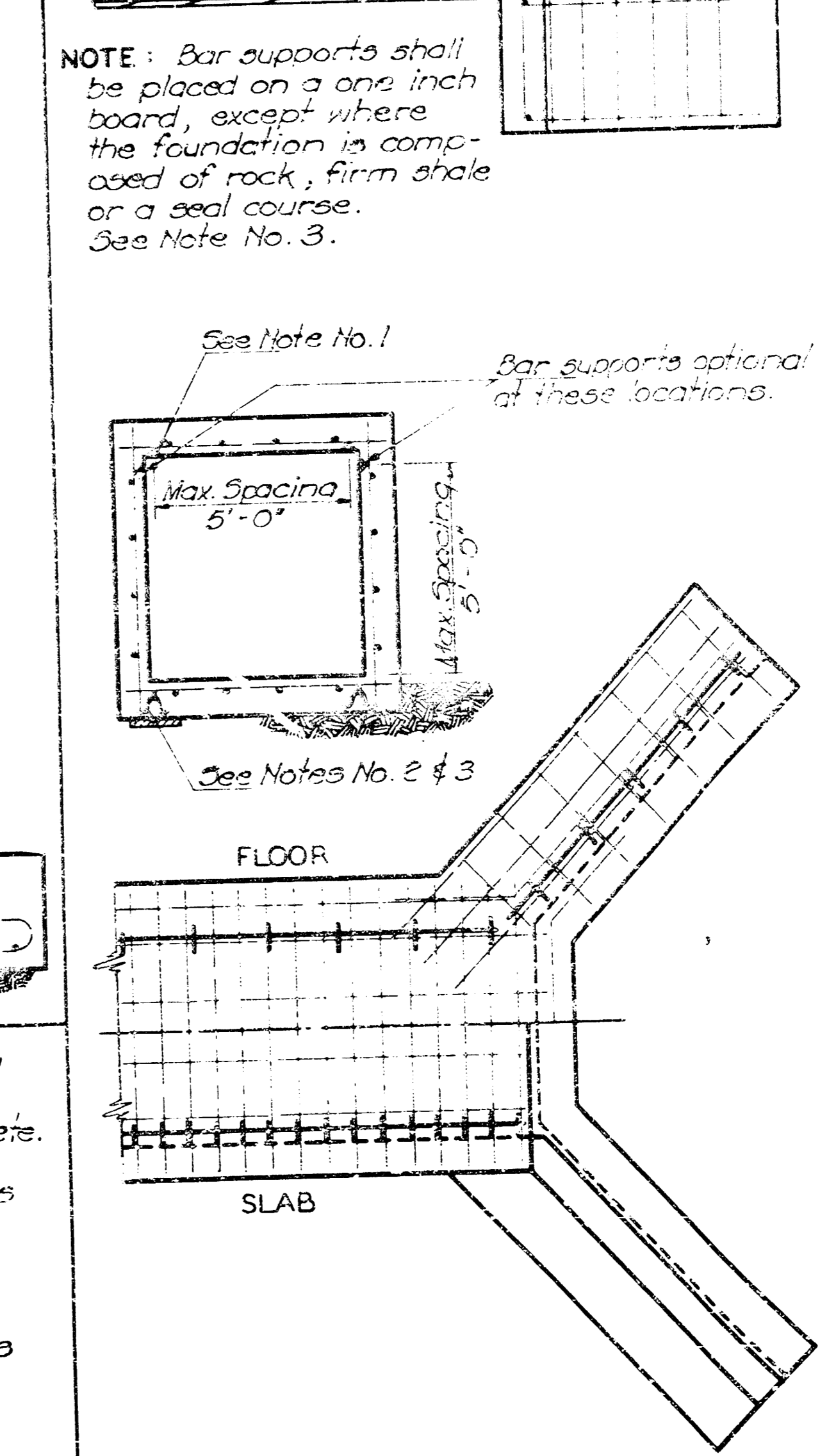
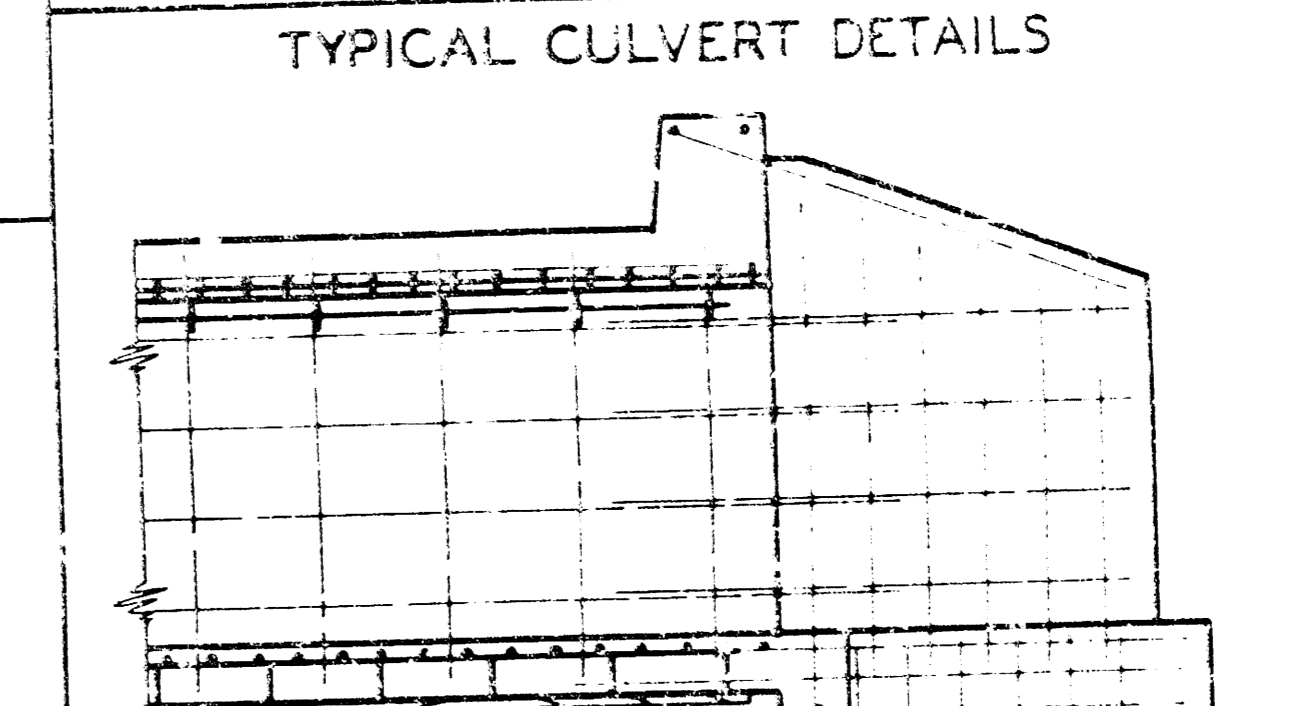
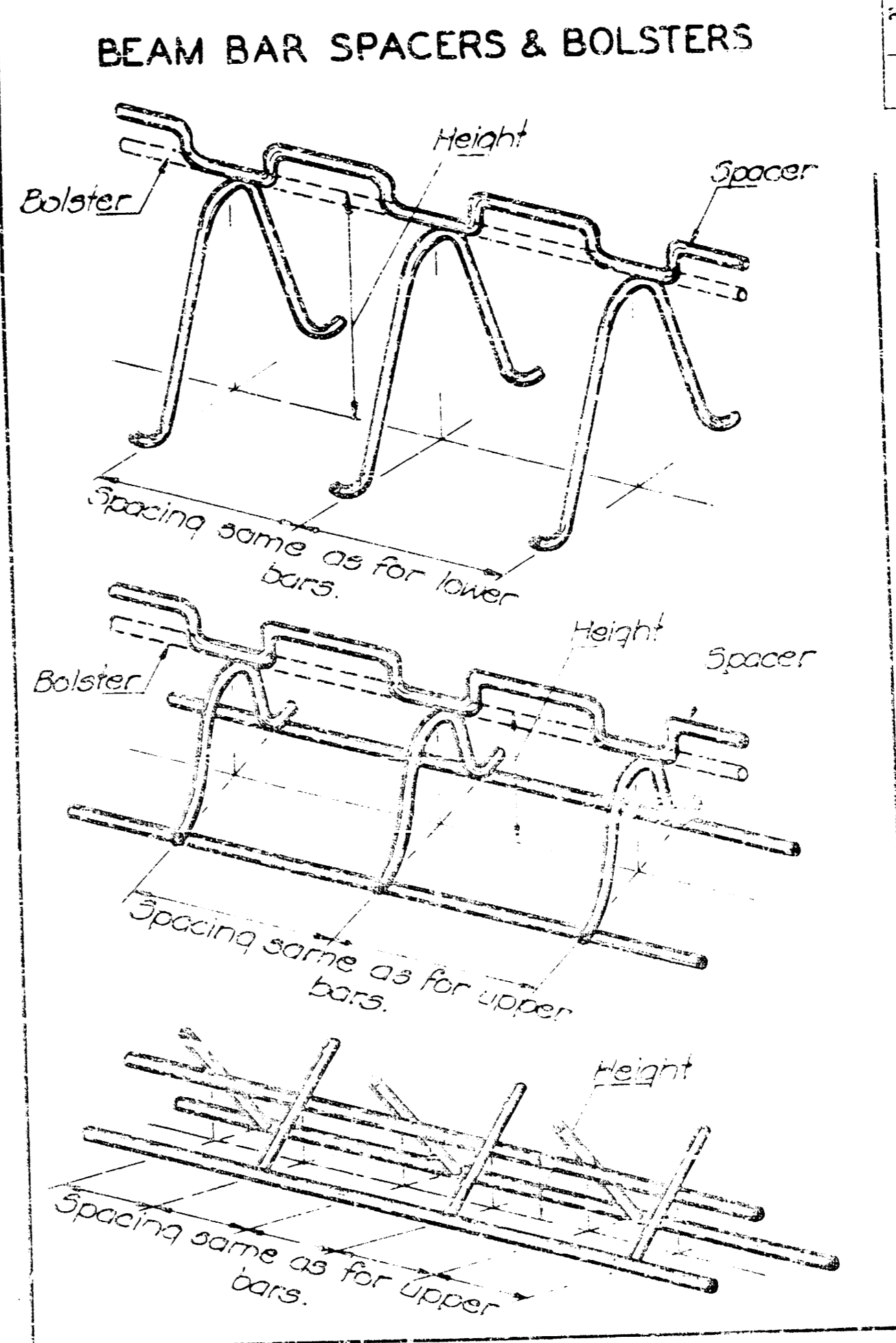
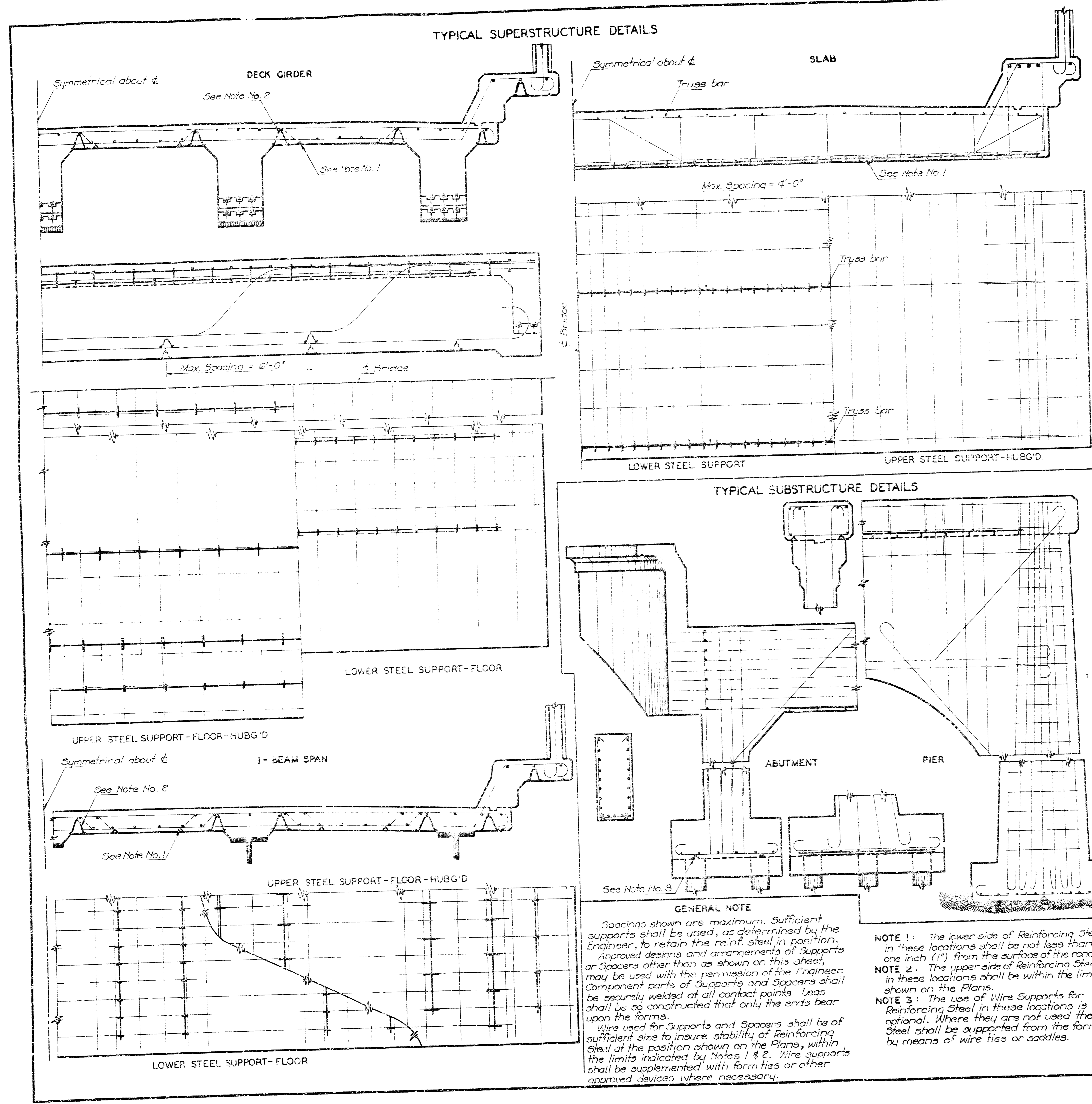
**BRIDGE EXCAVATION**

STD. NO. 100-1 SCALE: 1/4" = 1'-0" (Per STD. 361) (Rev. 1/83)

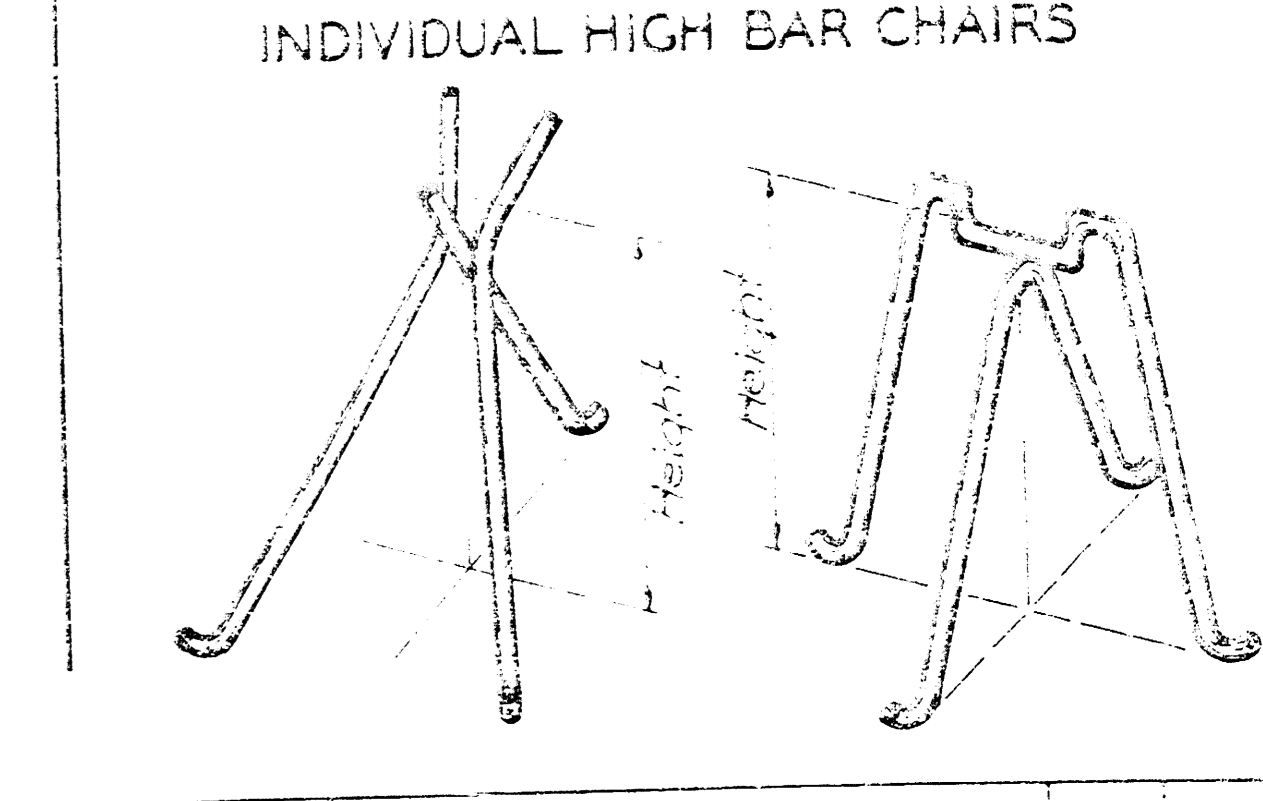
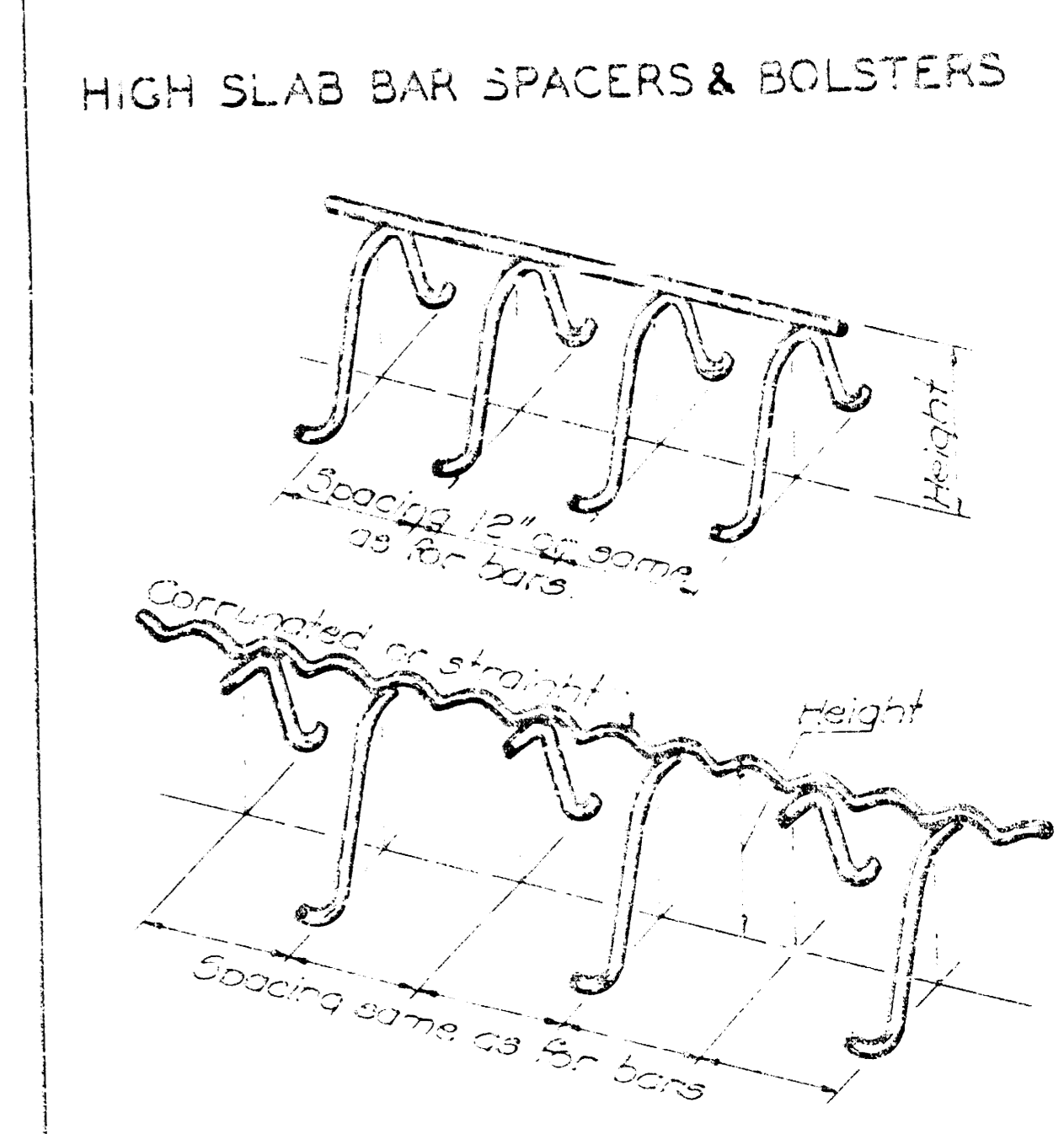
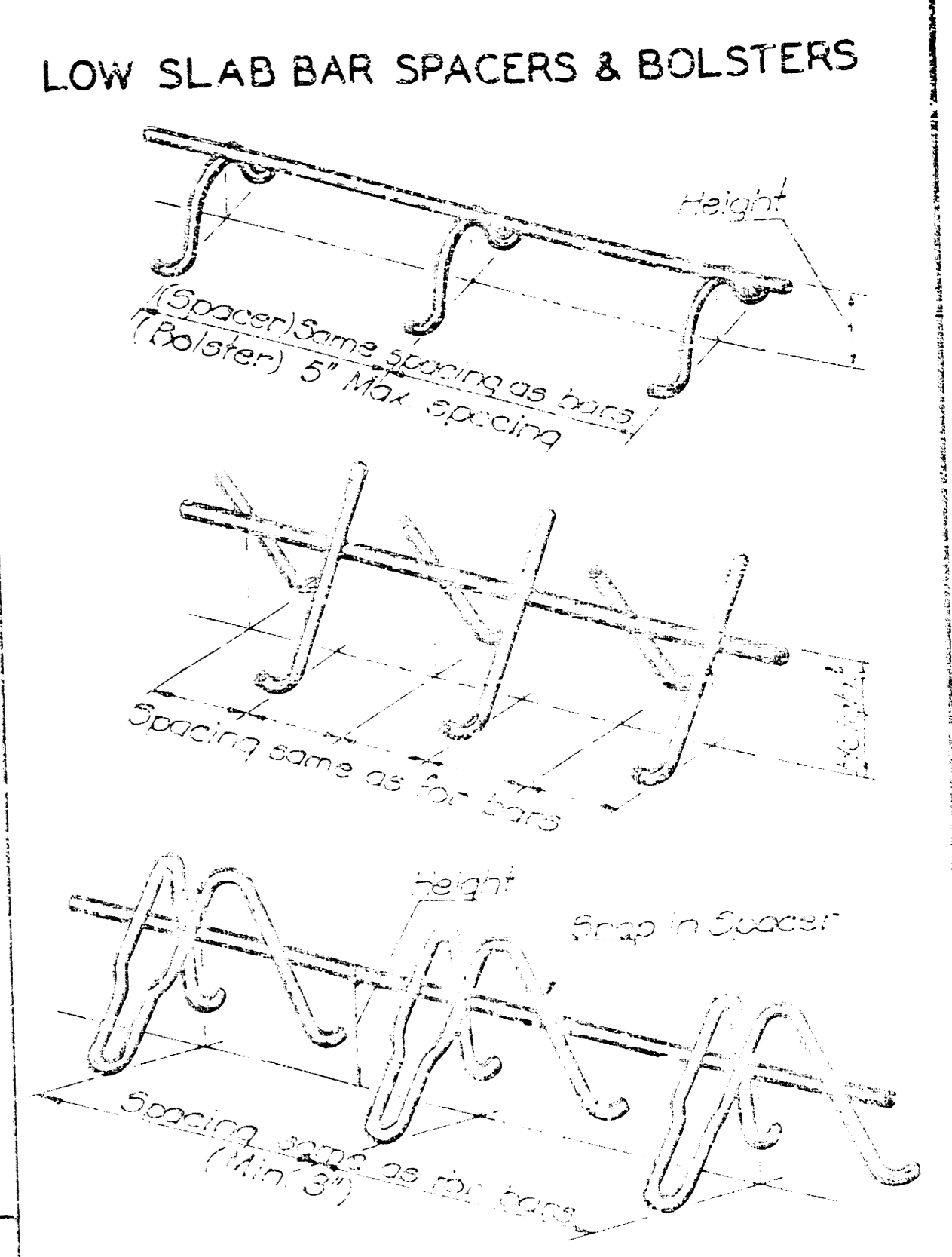
DESIGNED BY: A.R. DATE: 6/83. CHECKED BY: W.A.B. TRACED BY: W.A.B.

CHECKED BY: S.I. APPROVED BY: J.H. [Signature] DATE: 4/84

FILMED FROM THE BEST AVAILABLE COPY....



FLOW REGION NO.	STATE	PROJECT NO.	YEAR	SHEET NO.	TOTAL SHEETS
7	KANSAS	87 U 0853-01	1984	11	16



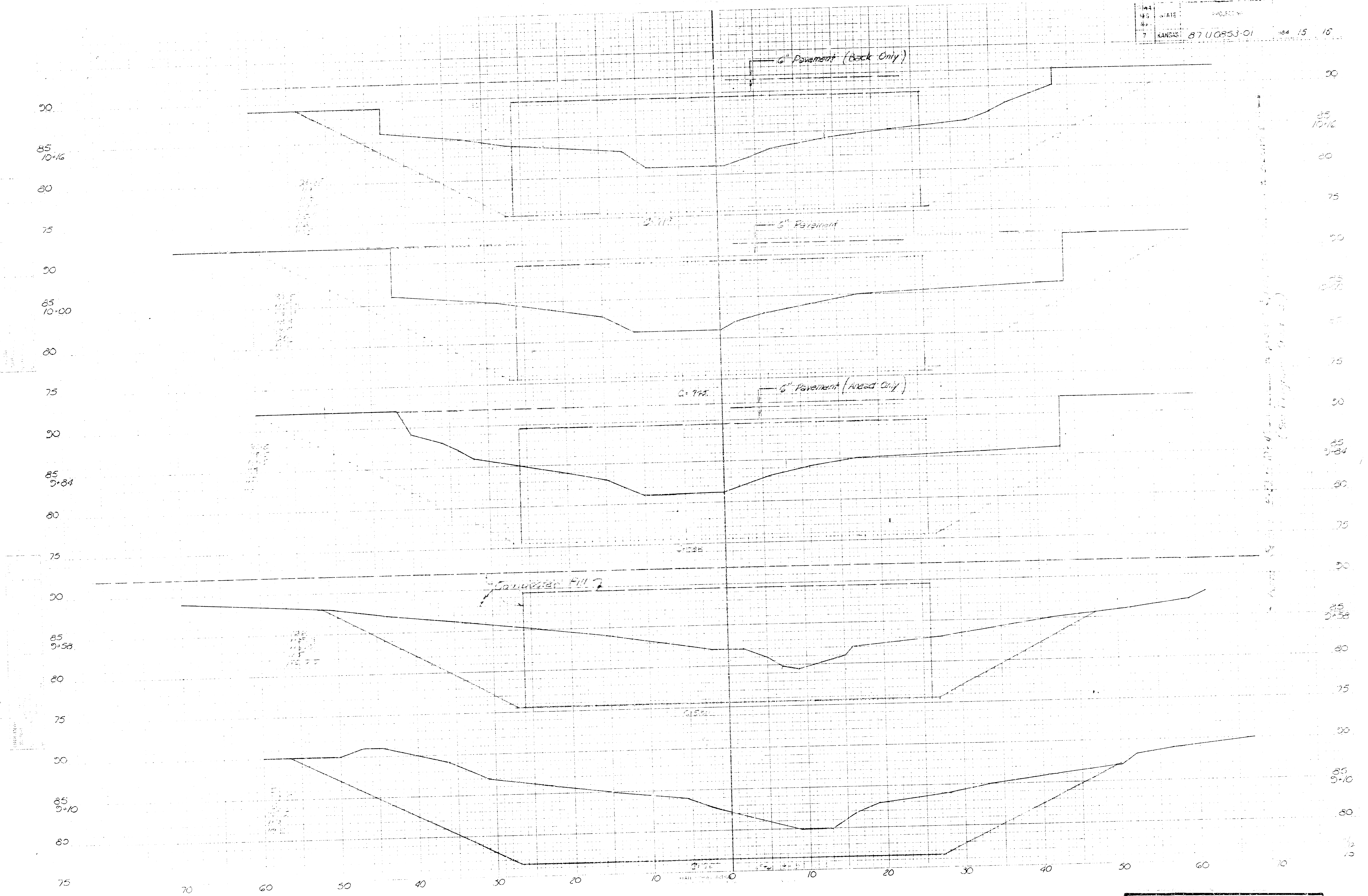
NO.	DATE	REVISIONS	BY	APP'D
KANSAS DEPARTMENT OF TRANSPORTATION				
<b>SUPPORTS AND SPACERS FOR REINFORCING STEEL</b>				
STD. NO. 610 SCALE: No. Scale				
DESIGNED BY: DATE: 7-23-83, DRAWN BY: J.S.B., TRACED BY: W.J.				
CHECKED BY: S.C., APPROVED BY: L. J. Vincent DATE 4-22-84				

**FILMED FROM THE BEST AVAILABLE COPY ....**

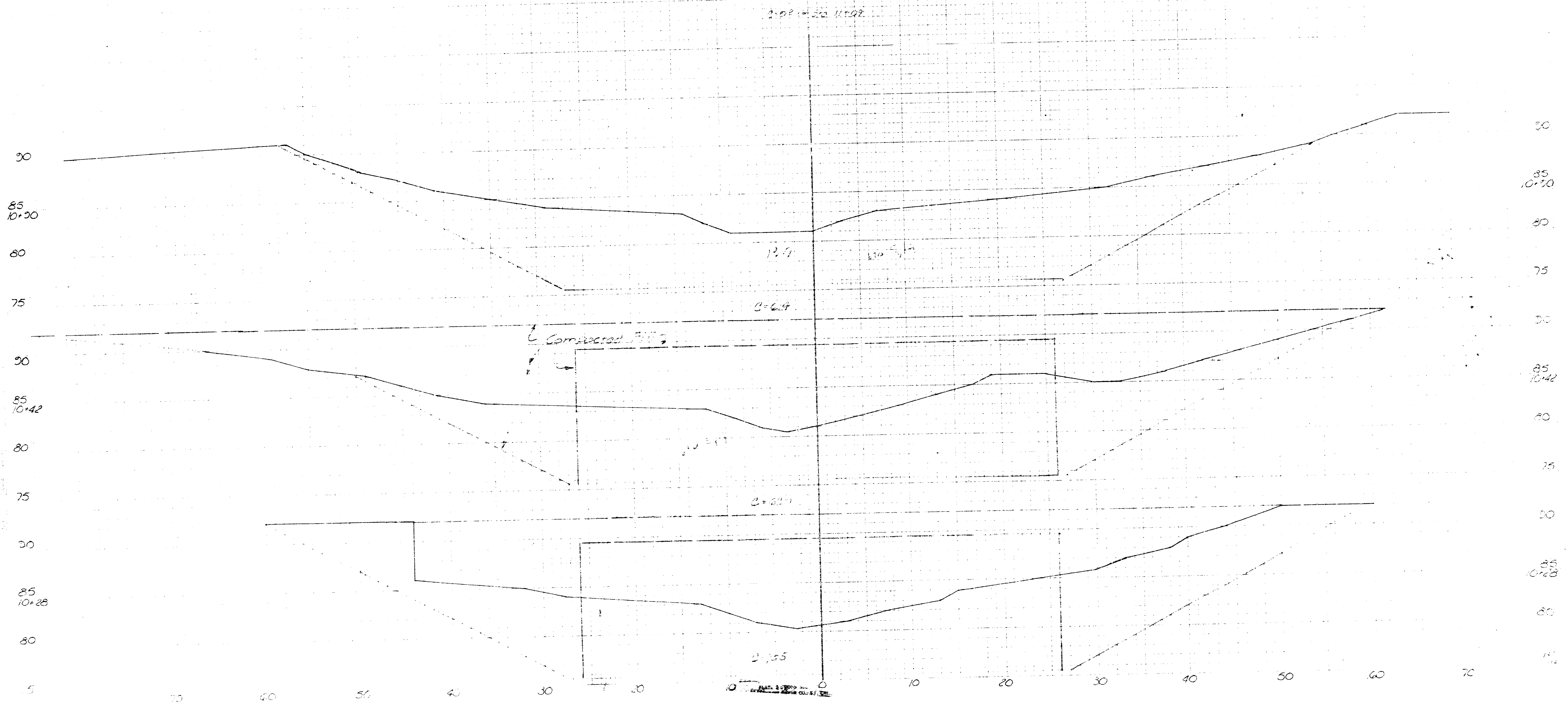








FILMED FROM THE BEST AVAILABLE COPY....



FILMED FROM THE BEST AVAILABLE COPY....