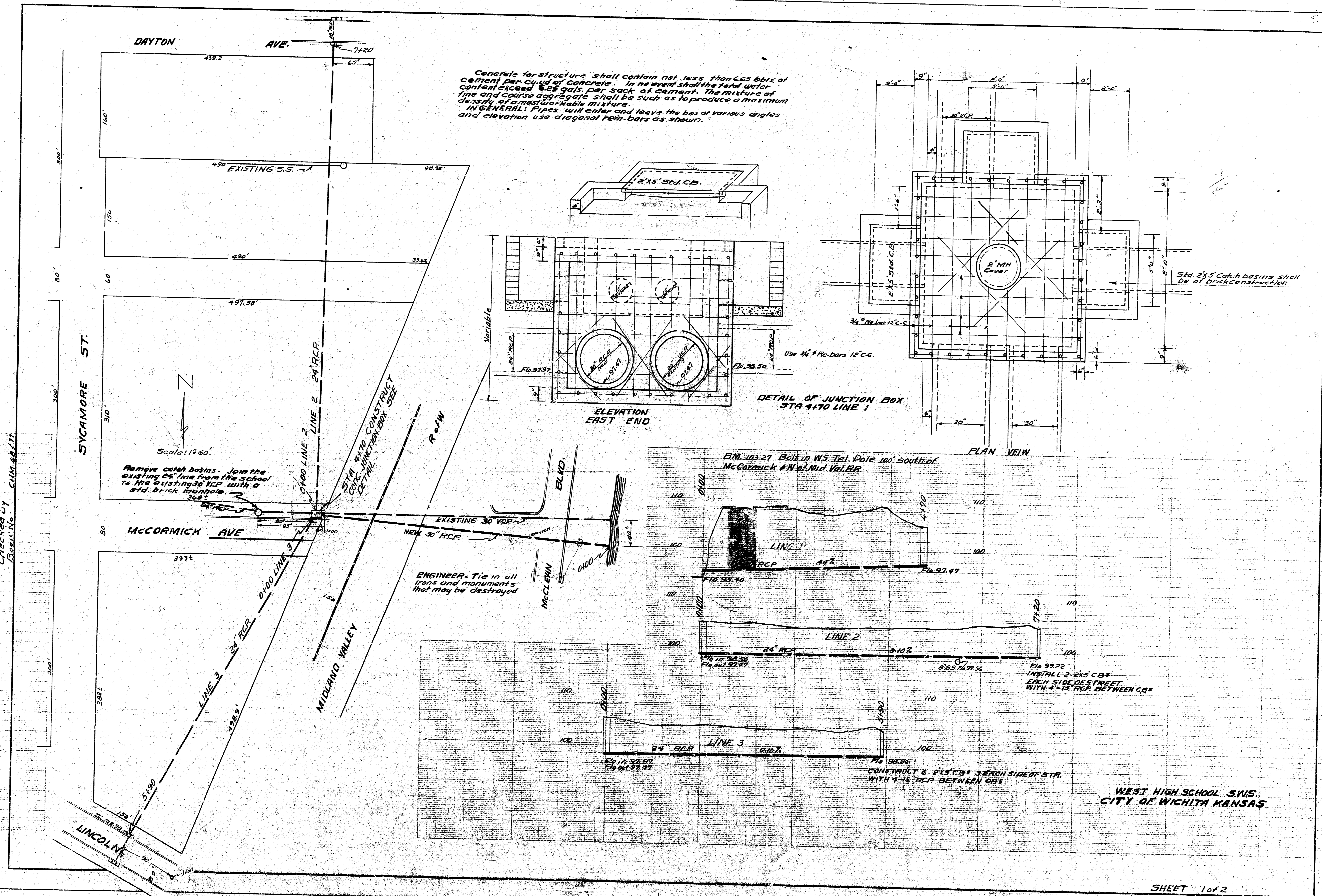
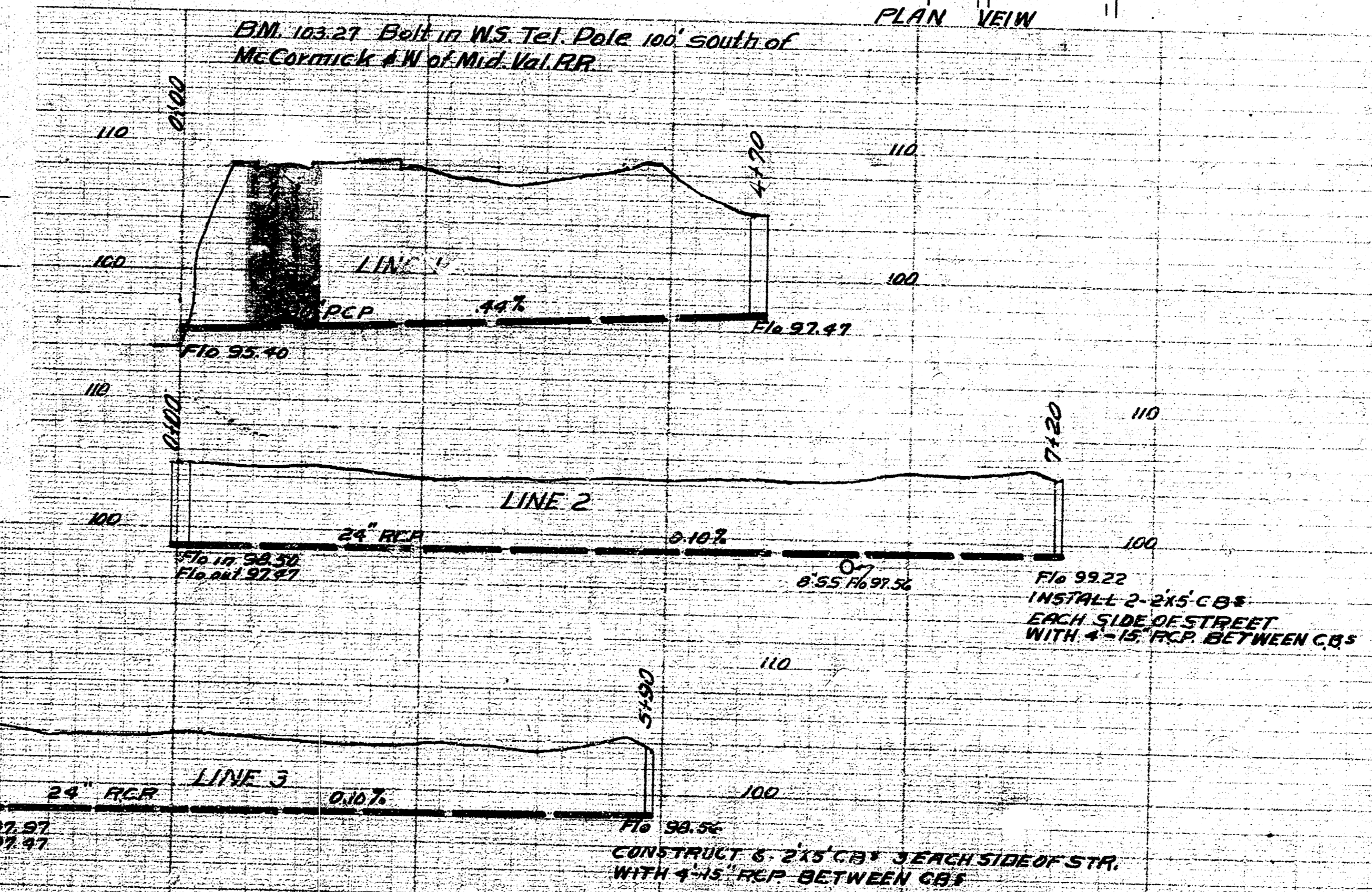
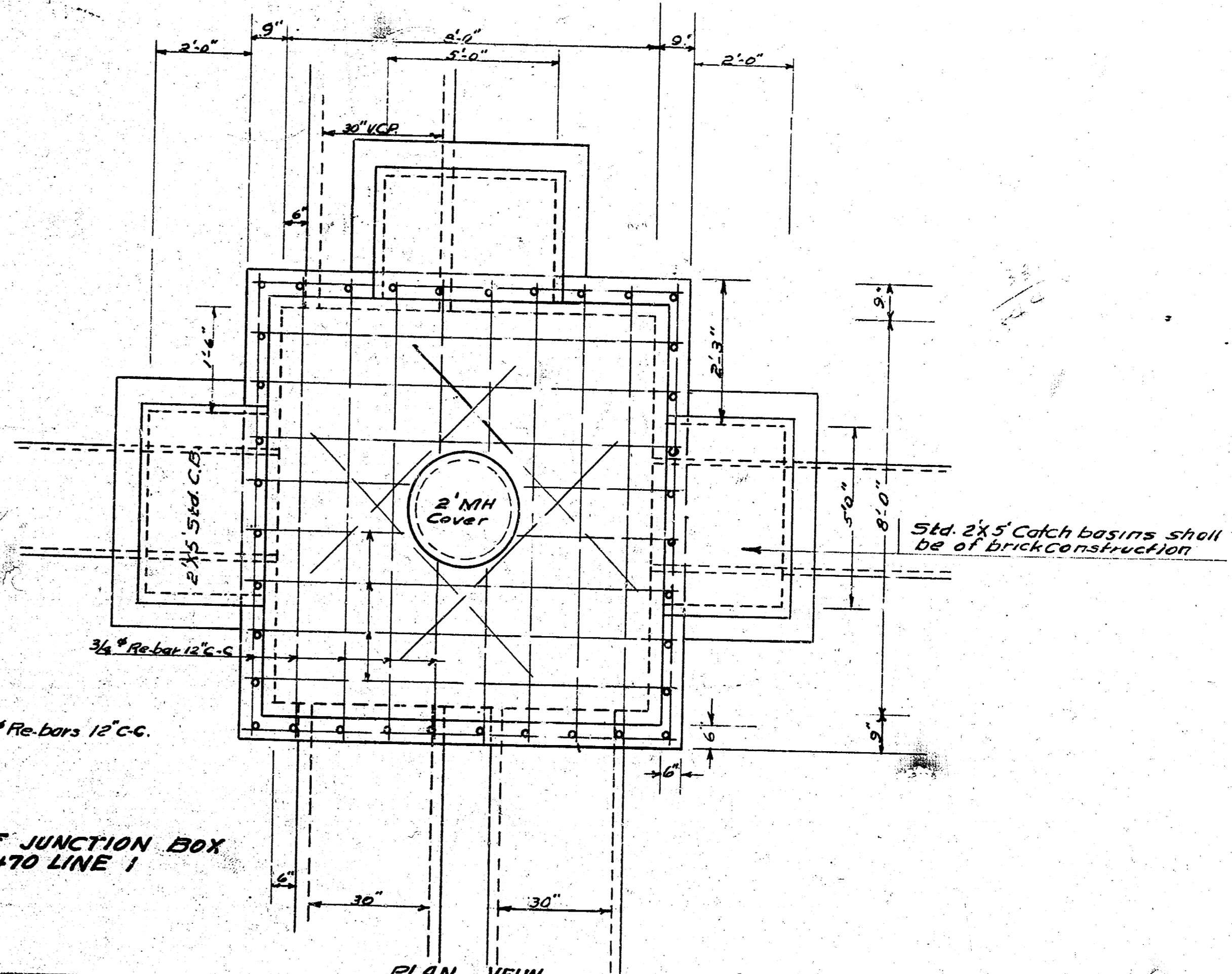
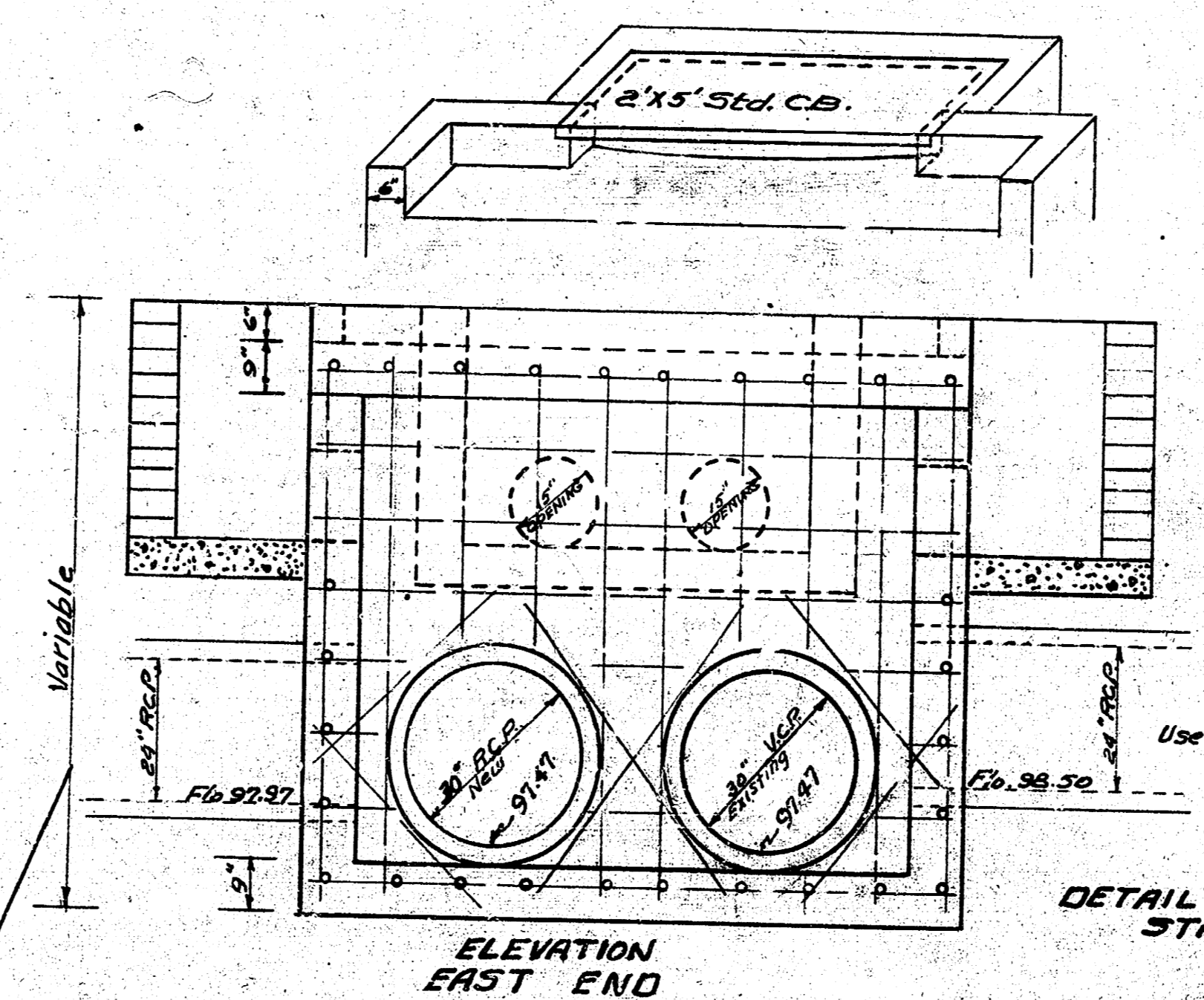


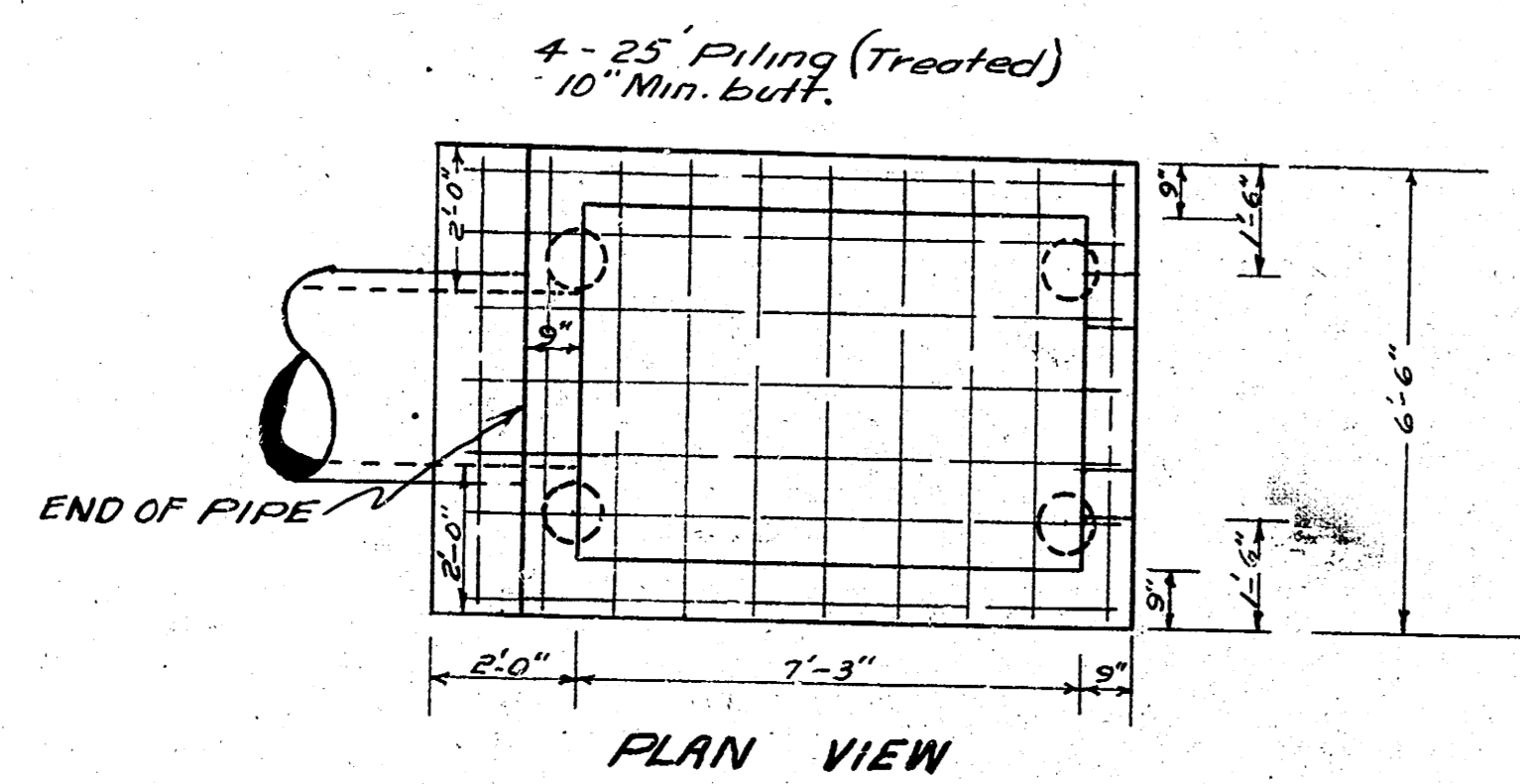
Date 7-31-53
 Drawn by McClellan
 Checked by CHAMBERLAIN



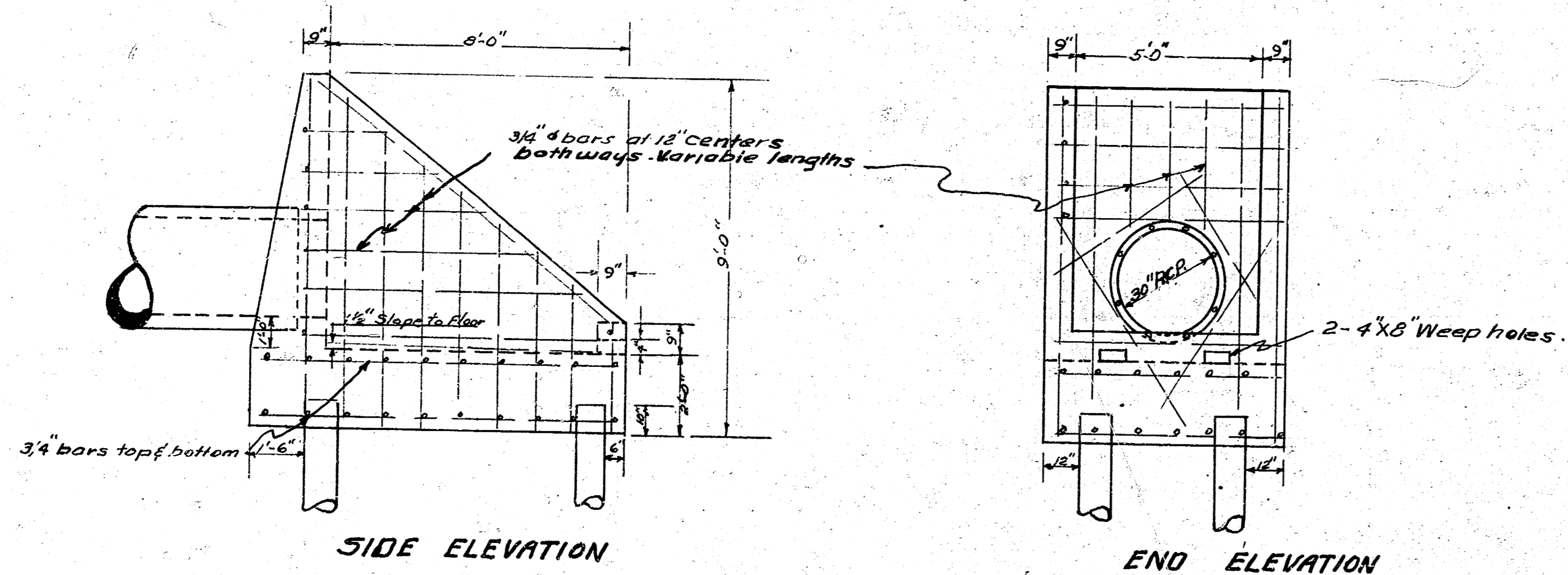
Concrete for structure shall contain not less than 6.5 lbs. of cement per cu. yd. of concrete. In no event shall the total water content exceed 25 gals. per sack of cement. The mixture of fine and coarse aggregate shall be such as to produce a maximum density of amenable mixture.
 IN GENERAL: Pipes will enter and leave the box at various angles and elevation use diagonal rebar as shown.



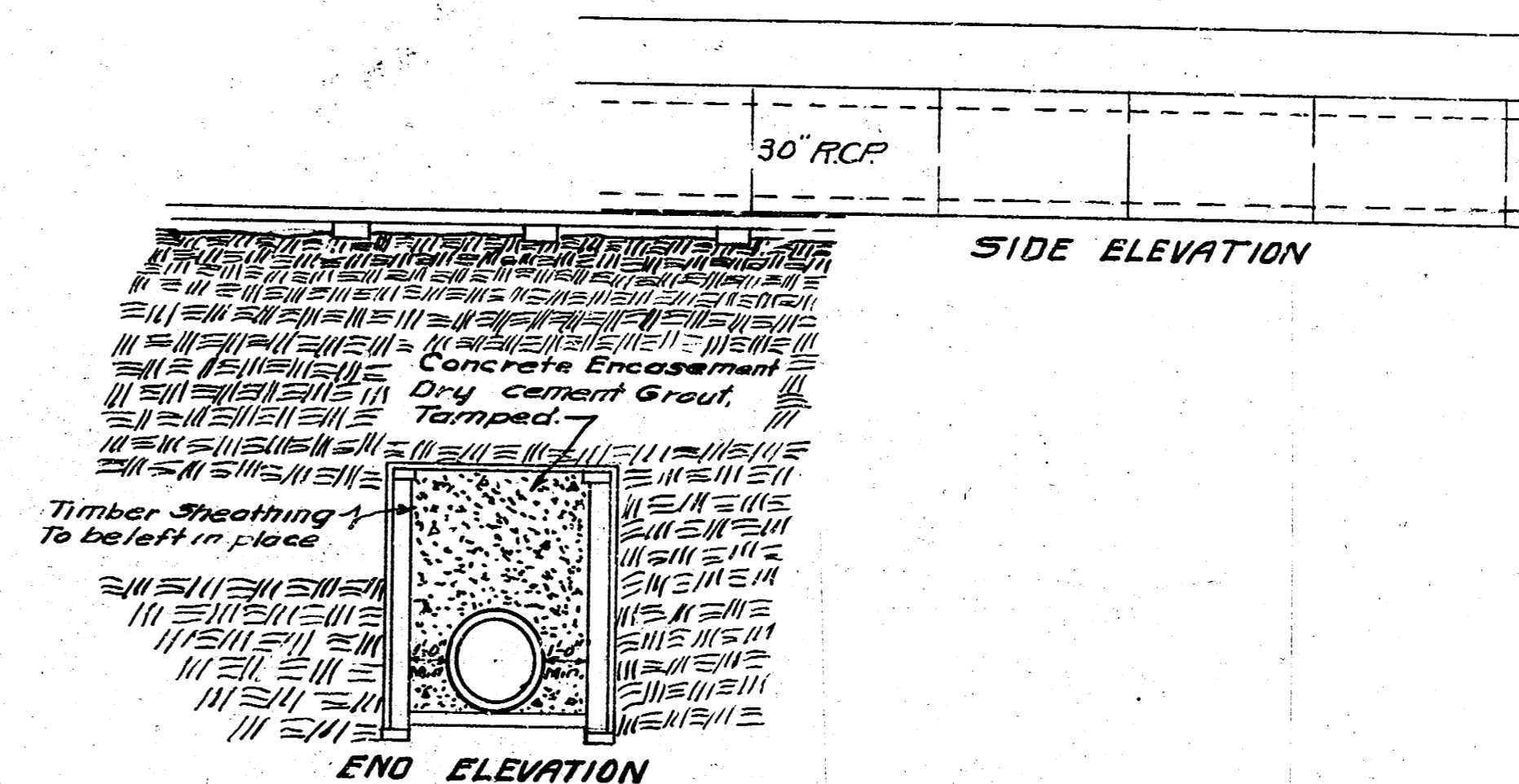
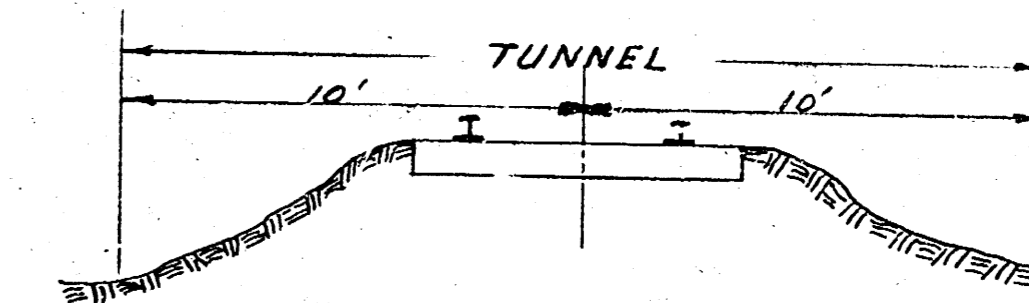
WEST HIGH SCHOOL S.W.S.
 CITY OF WICHITA KANSAS



Concrete for structure shall contain not less than 1.65 bbl. of cement per cu yd. of concrete. In no event shall the total water content exceed 6.85 gal. per sack of cement. The mixture of fine and coarse aggregate shall be such as to produce a maximum density of a most workable mixture. Where pipes enter the structure use diagonal bars as shown on the plan.

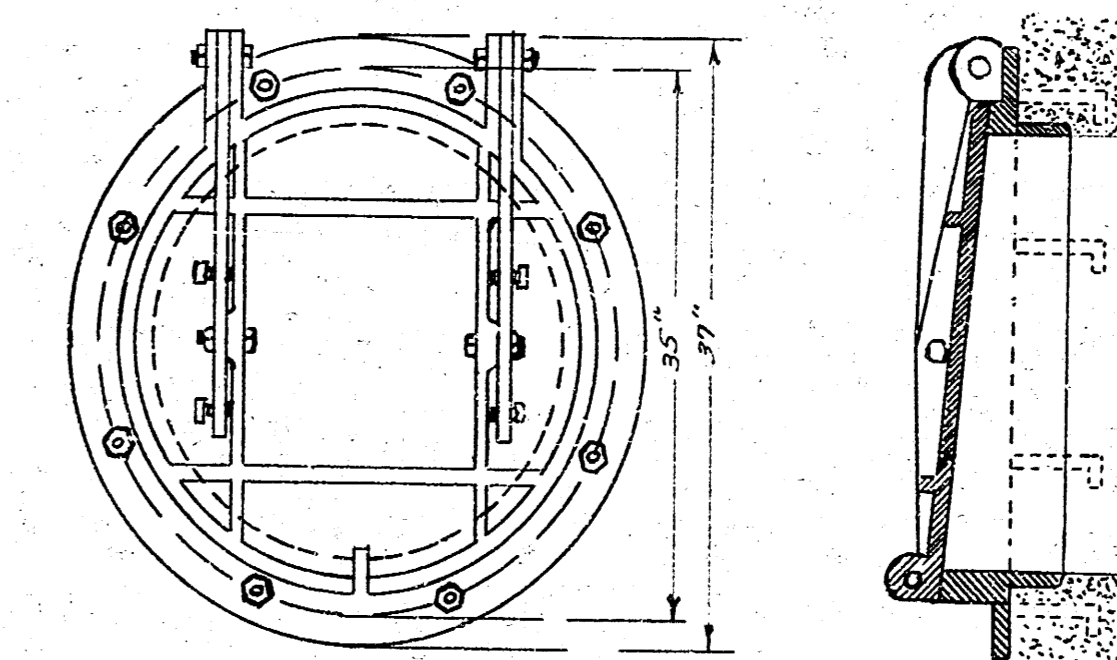


REIN. CONCRETE OUTFALL STRUCTURE



SIDE ELEVATION

TUNNEL DETAIL



PEKUL MODEL 16 AUTOMATIC FLAP GATE