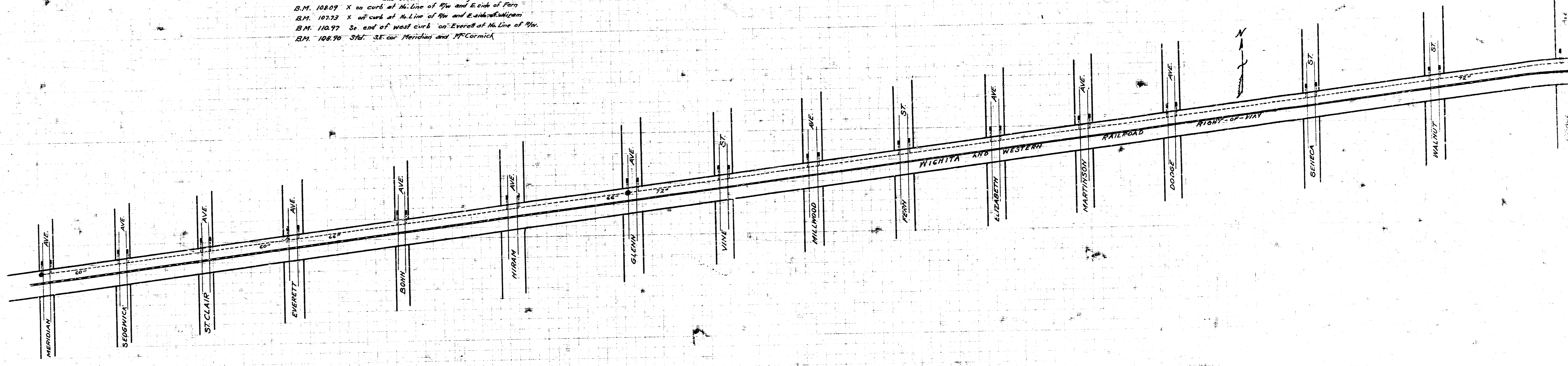
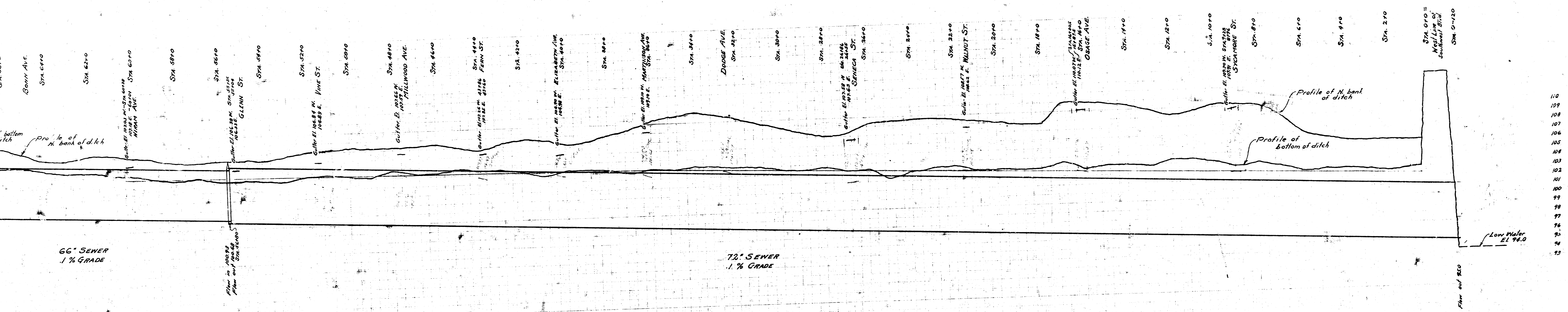
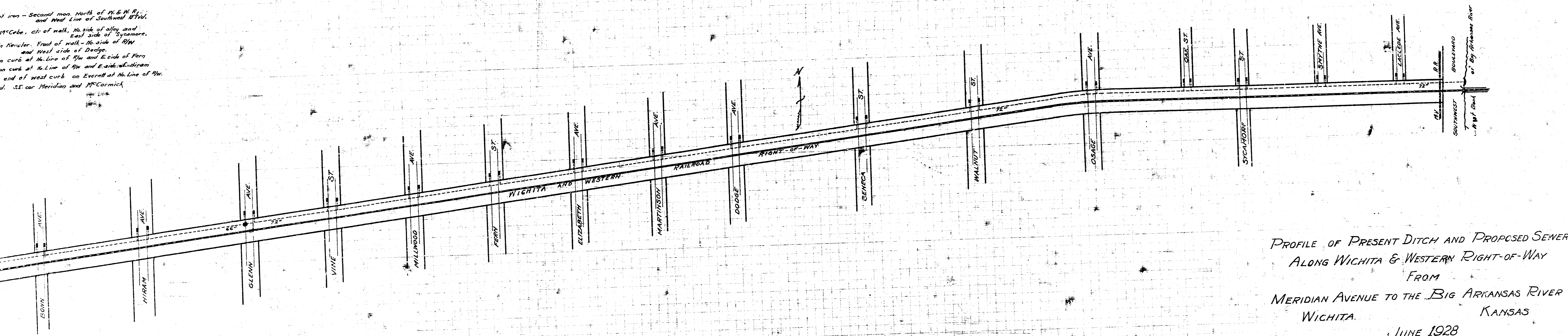


B.M. 111.55 Top of iron - Second man, north of N. & M. R. and West Line of Southland Bldg.
 B.M. 114.84 M in McCabe's, ch. of walk, N. side of alley and East side of Sycamore.
 B.M. 109.45 K in Reuler. Front of walk - N. side of B.W. and West side of Dodge.
 B.M. 108.09 X on curb at N. Line of 9th and E. side of Ferry
 B.M. 107.73 X on curb at N. Line of 9th and E. side of Elizabeth
 B.M. 110.97 S. end of west curb on Everett at N. Line of 9th.
 B.M. 108.90 Std. SE cor Meridian and McCormick





at intersection - Second man North of N. & N. St.
and West Line of Southwest Blvd.
McCabe, etc. of walk, No. side of alley, and
East side of Sycamore.
Newell. Front of walk - No. side of RW
and West side of Dodge.
on curb at No. Line of 9th and East side of Perry
on curb at No. Line of 9th and East side of -Hiram
end of west curb on Everett at No. Line of 9th.
d. S.E. cor Meridian and McCormick



PROFILE OF PRESENT DITCH AND PROPOSED SEWER
ALONG WICHITA & WESTERN RIGHT-OF-WAY
FROM
MERIDIAN AVENUE TO THE BIG ARKANSAS RIVER
WICHITA KANSAS
JUNE 1928