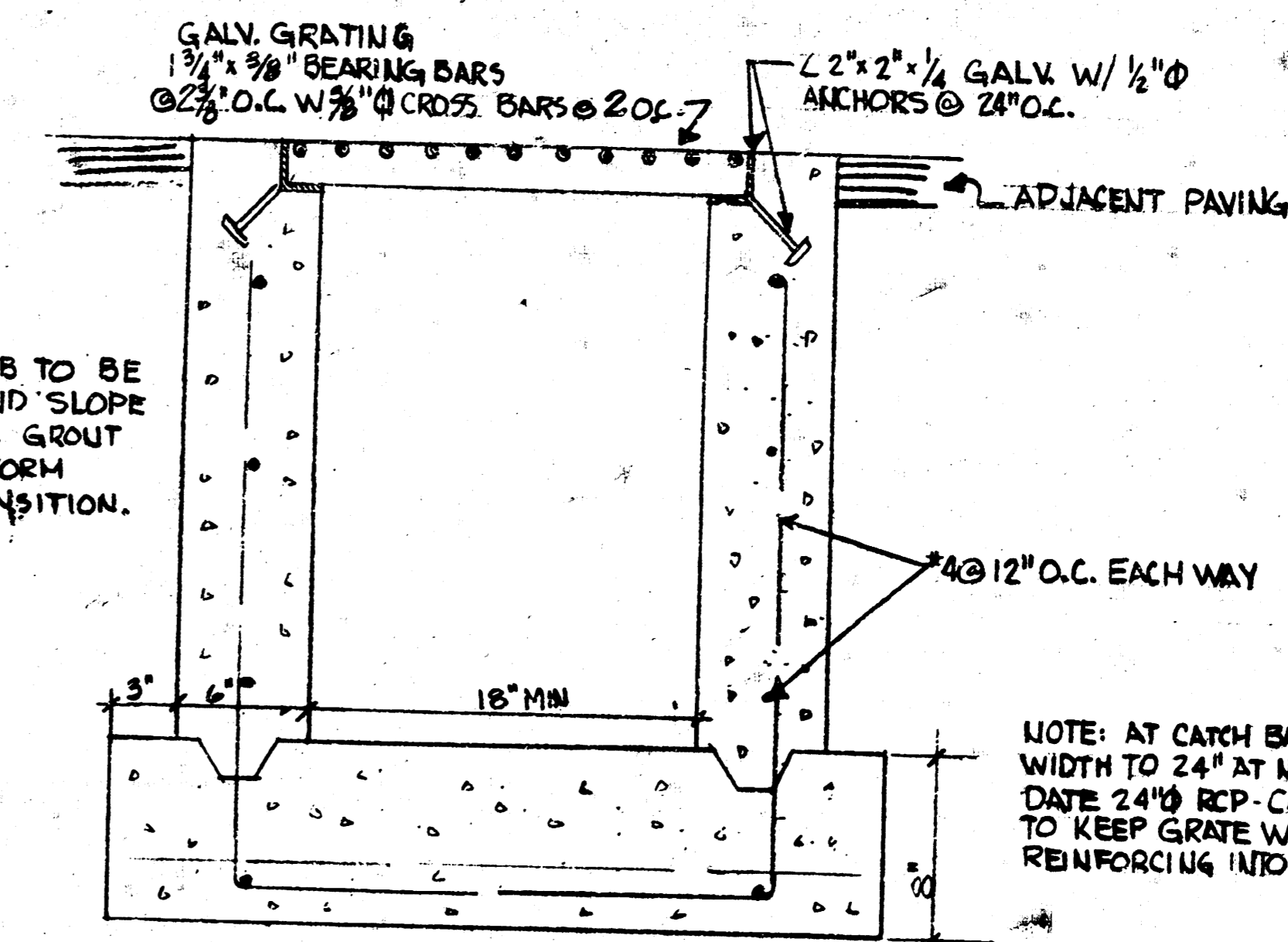
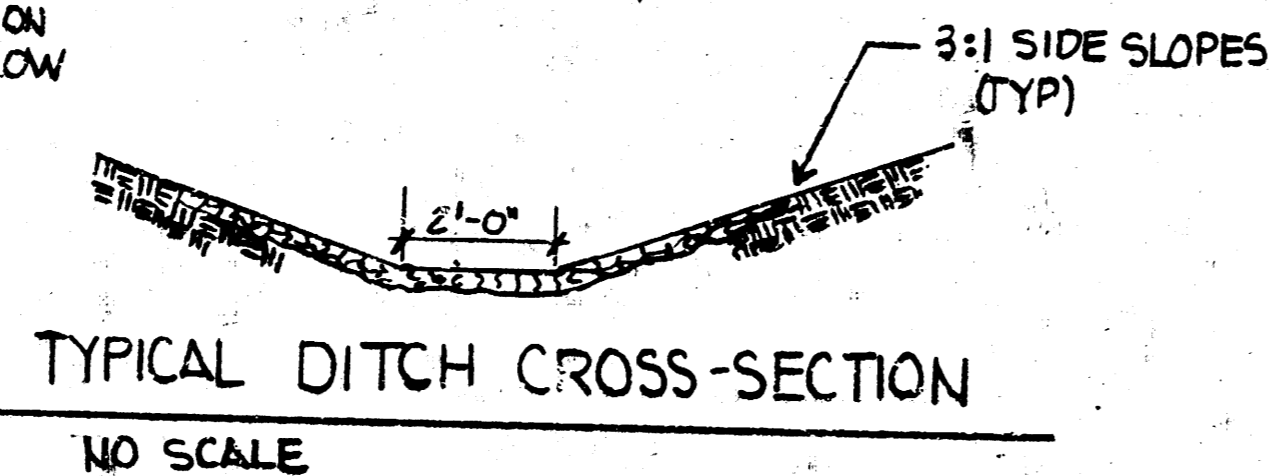


PLACE 6" THICK LAYER OF RIP-RAP IN DITCH. RIP-RAP SHALL EXTEND TO ELEVATION 160.0 OR 2'-0" ABOVE FLOW LINE, WHICHEVER IS GREATER



① TYPICAL TRENCH INLET  
NO SCALE

STORM SEWER SCHEDULE					
LOCATION	GRATE SLEV.	INV. IN. ELEV.	INV. OUT. ELEV.	FRAME OPENING SIZE	REMARKS
T.I.#1	164.0		161.0	1'-6" x 6'-0"	
T.I.#2	163.0		160.0	1'-6" x 25'-0"	
T.I.#3	158.0		155.0	1'-6" x 29'-0"	
C.B.#1	160.0	36" - 1535		24" x 48"	CONST. & SIZE OF MH TO BE PER CITY STDS.
C.B.#2	158.0	T.I. #155.0		24" x 48"	BE PER CITY STDS.
EXISTING CITY MH.	ADJUST	VERIFY	VERIFY	EXISTING	

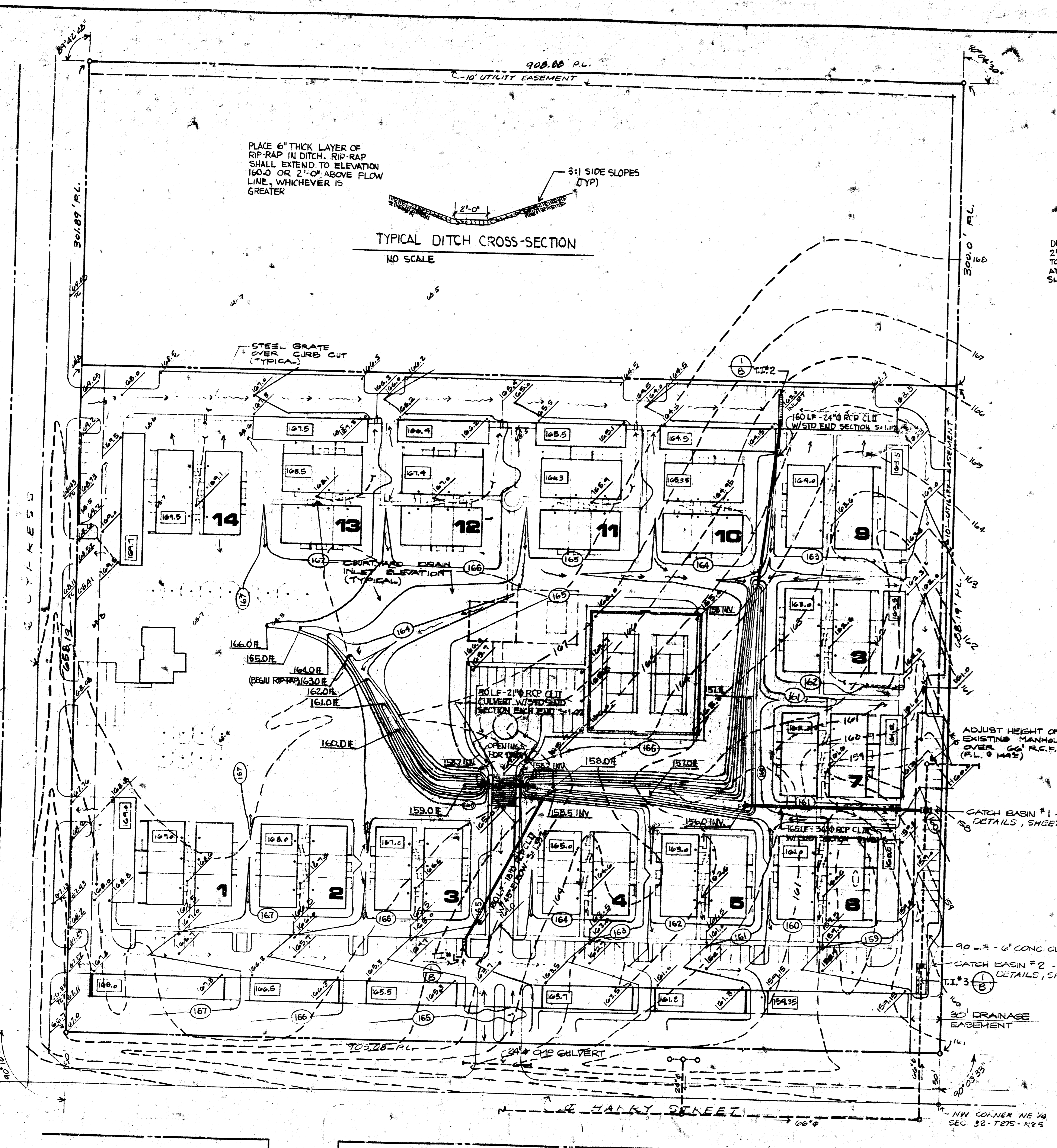
NOTE: ALL STORM SEWER WORK SHALL BE IN ACCORDANCE WITH ALL LOCAL AUTHORITIES HAVING JURISDICTION.

LEGEND	
EXISTING CONTOUR	--- 164 ---
NEW CONTOUR	--- 163 ---
NEW SPOT ELEVATION	163.2
SWALE	---
SURFACE RUNOFF DIRECTION	→
NEW CATCH BASIN & STORM SEWER	— CB#1
DITCH FLOW LINE ELEVATIONS	159.0 F.
INVERT ELEVATION	158.0 INV.
EXISTING SPOT ELEVATION	66.4

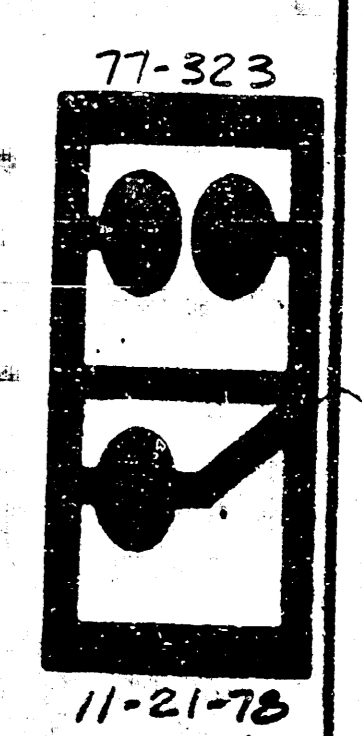
PRIVATE STORM SEWER  
# 400-76-245-80 003-000-000-008

ARAGON APARTMENTS - 8909 E. HARRY  
SITE PLAN - GRADING  
1" = 50 FEET

NOTE: FINISH GRADE AT ALL STRUCTURES SHALL BE 6" BELOW INDICATED FINISH FLOOR ELEVATIONS

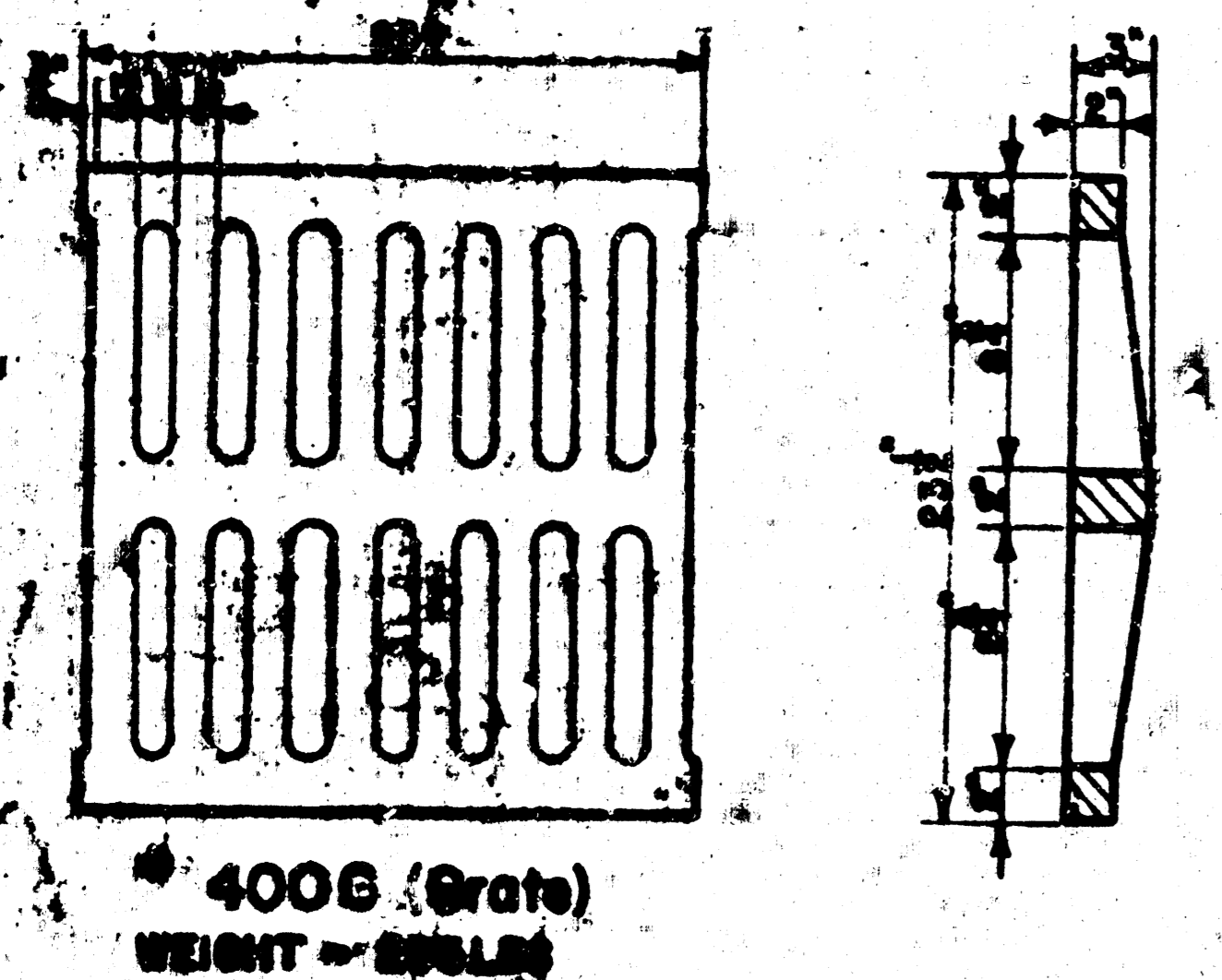
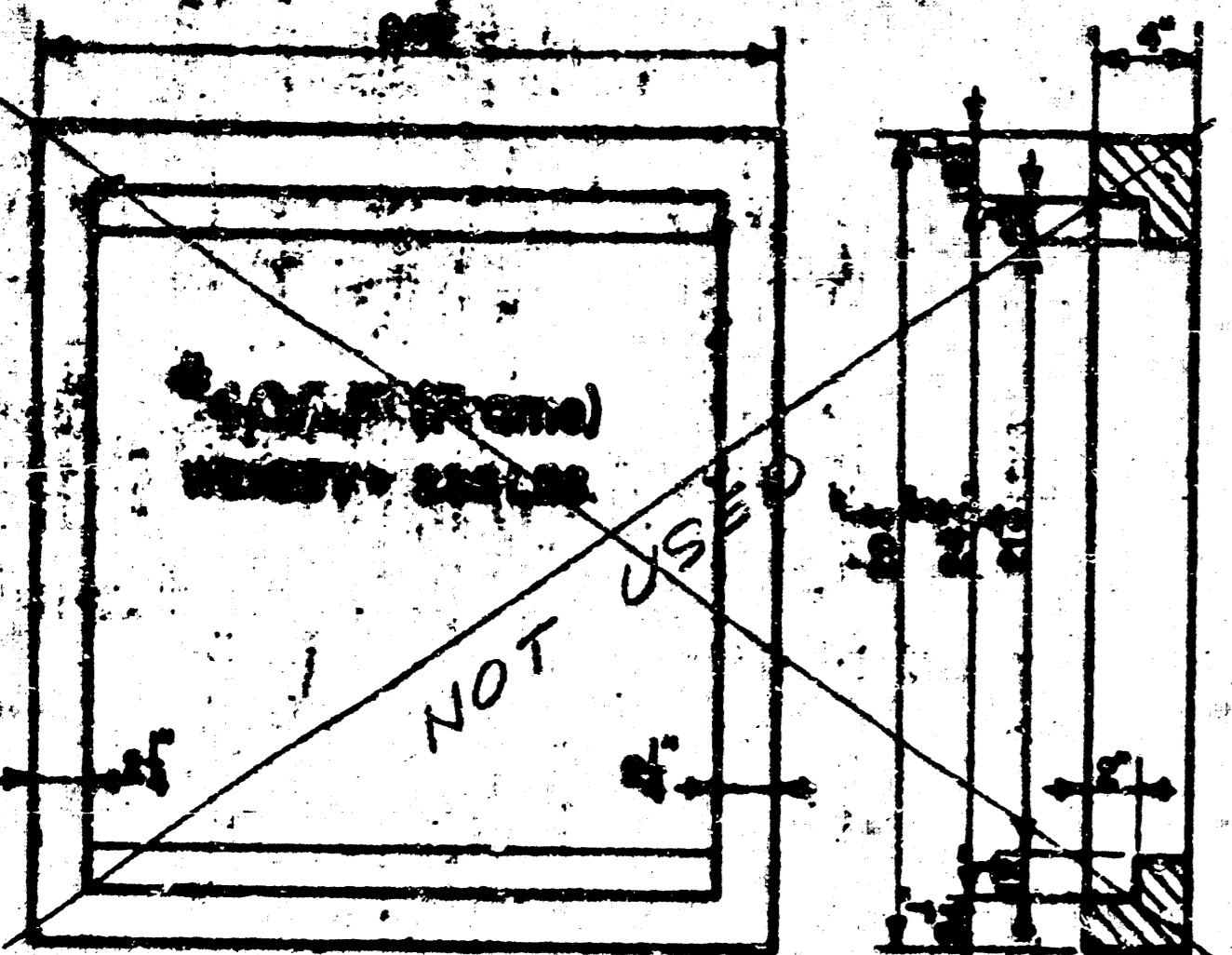


RODGER A. BROOKS - ARCHITECT  
1101 EAST WILLOW AVENUE  
WICHITA KANSAS 67207

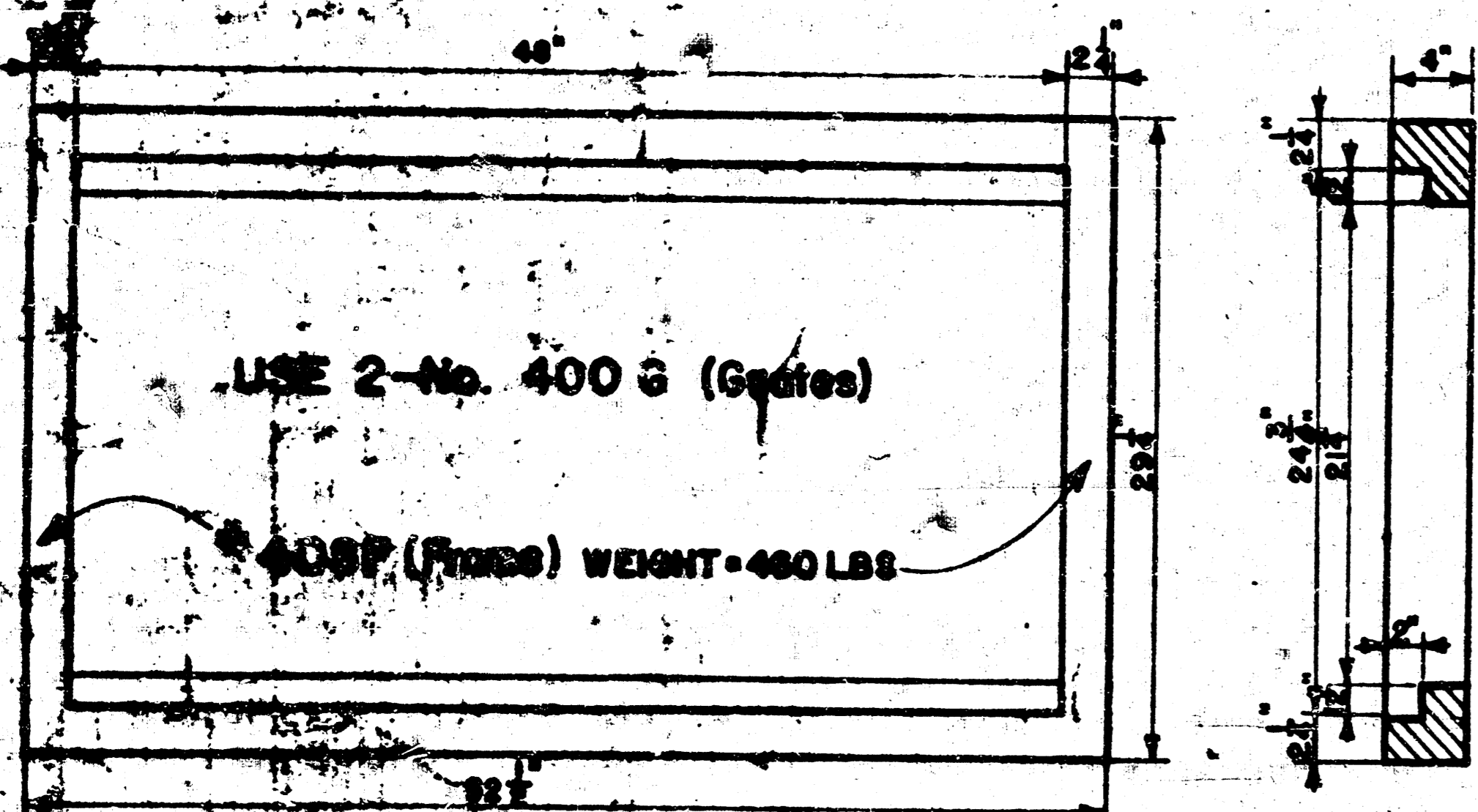


FILED FROM THE BEST AVAILABLE COPY

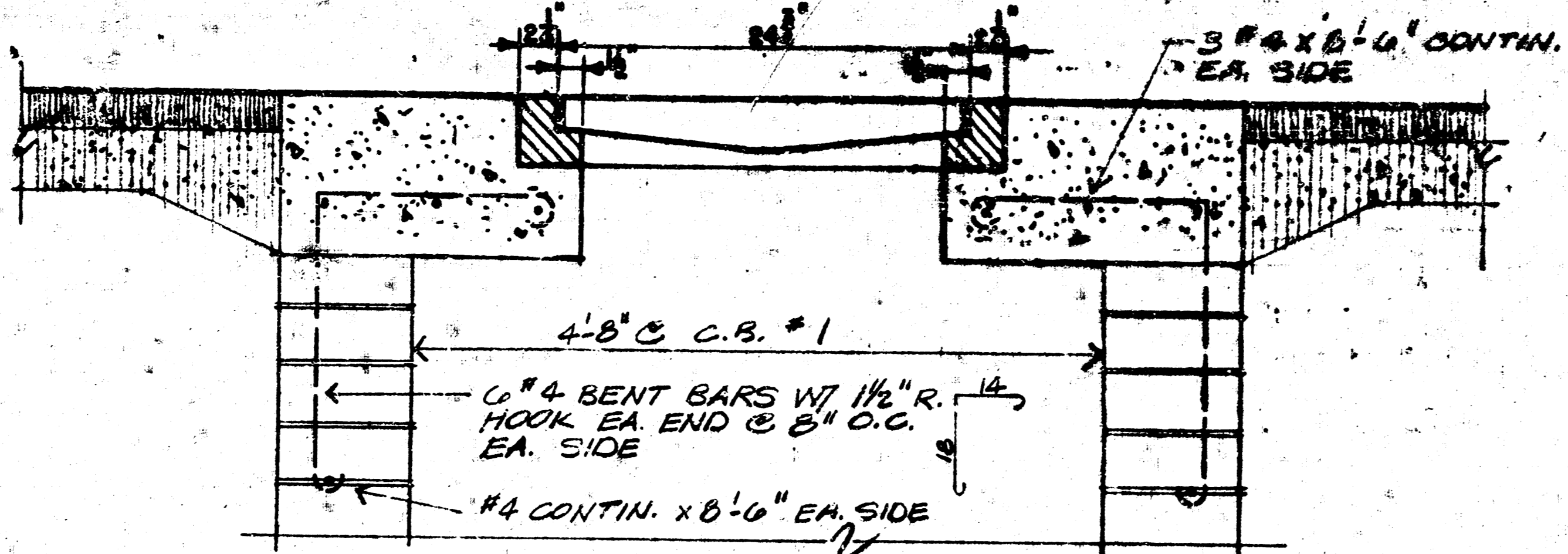
NOTE: Grates shall be imprinted on the top surface with "CITY OF WICHITA" using letters at least 1" in height. Other marking methods may be used only if approved by the engineer.



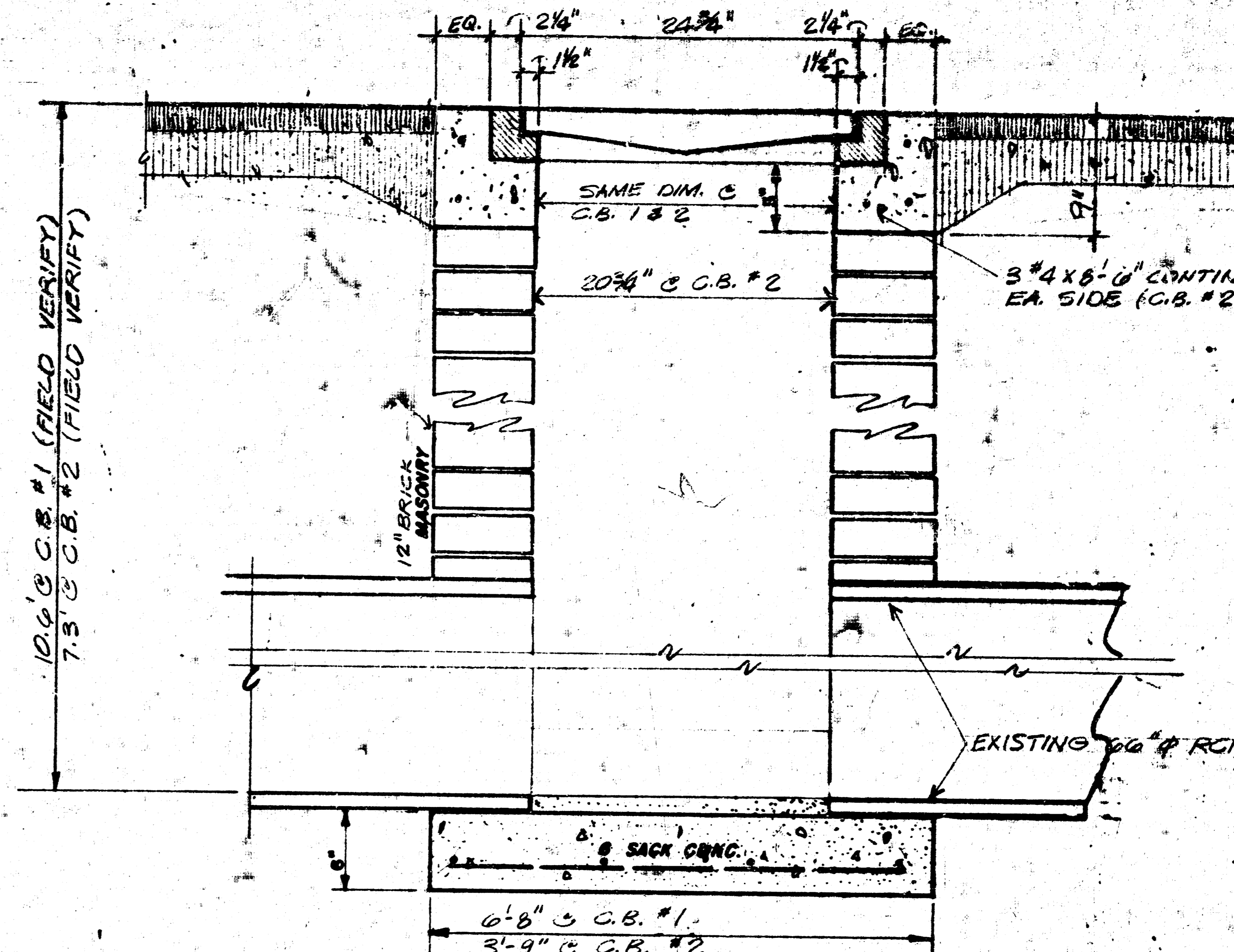
24"x24" Frame & Grate Detail



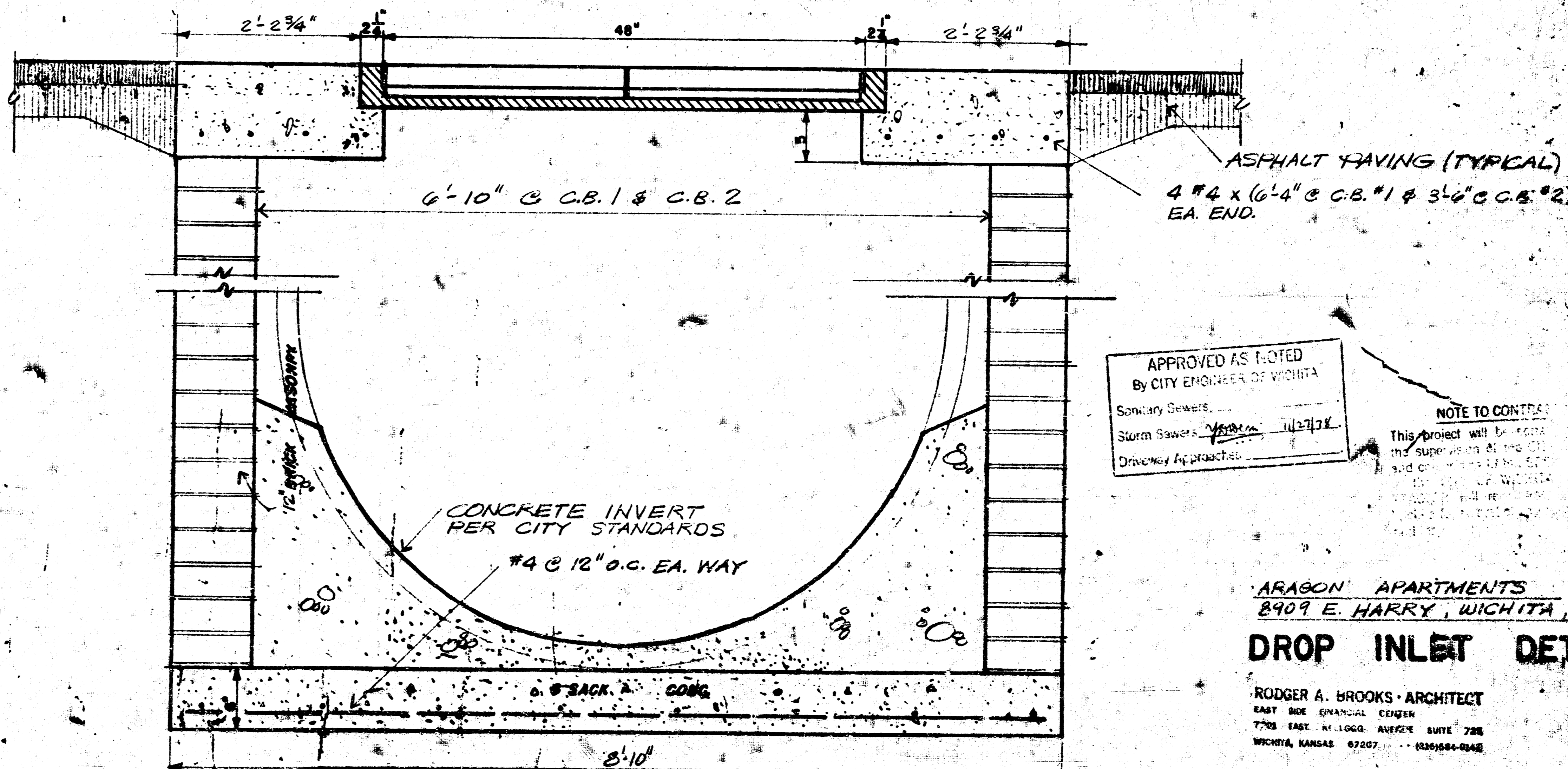
DOUBLE 24"x24" Frame Detail



TRANSVERSE TOP SECTION CB #1



TRANSVERSE SECTION (TYPICAL)



LONGITUDINAL SECTION (TYPICAL)

APPROVED AS NOTED  
By CITY ENGINEER OF WICHITA  
Sanitary Sewers \_\_\_\_\_  
Storm Sewers \_\_\_\_\_  
Driveway Approaches \_\_\_\_\_

NOTE TO CONTRACTOR  
This project will be under the supervision of the City Engineer of Wichita, Kansas. The contractor shall be responsible for the construction of the project in accordance with the plans and specifications. The contractor shall also be responsible for the maintenance of the project during the construction period.

ARABON APARTMENTS  
8909 E. HARRY, WICHITA, KS.

**DROP INLET DETAILS**

RODGER A. BROOKS - ARCHITECT  
EAST SIDE QUANCIAL CENTER  
7708 EAST 41<sup>ST</sup> AVENUE SUITE 208  
WICHITA, KANSAS 67207 (316) 684-0448

PRIVATE STORM SEWER  
# 468-76-245-80663-000-000-000

Date: 11-21-78  
Scale: NOT TO SCALE

C