

PRIVATE
STORM WATER SEWER PLANS FOR
BERKSHIRE III
APARTMENT COMPLEX
INDEX NO. 607861
USER CODE 378PPS

CITY OF WICHITA, KANSAS
MICHAEL E. LINDEBAK, CITY ENGINEER

APPROVED AS NOTED
BY CITY ENGINEER OF WICHITA

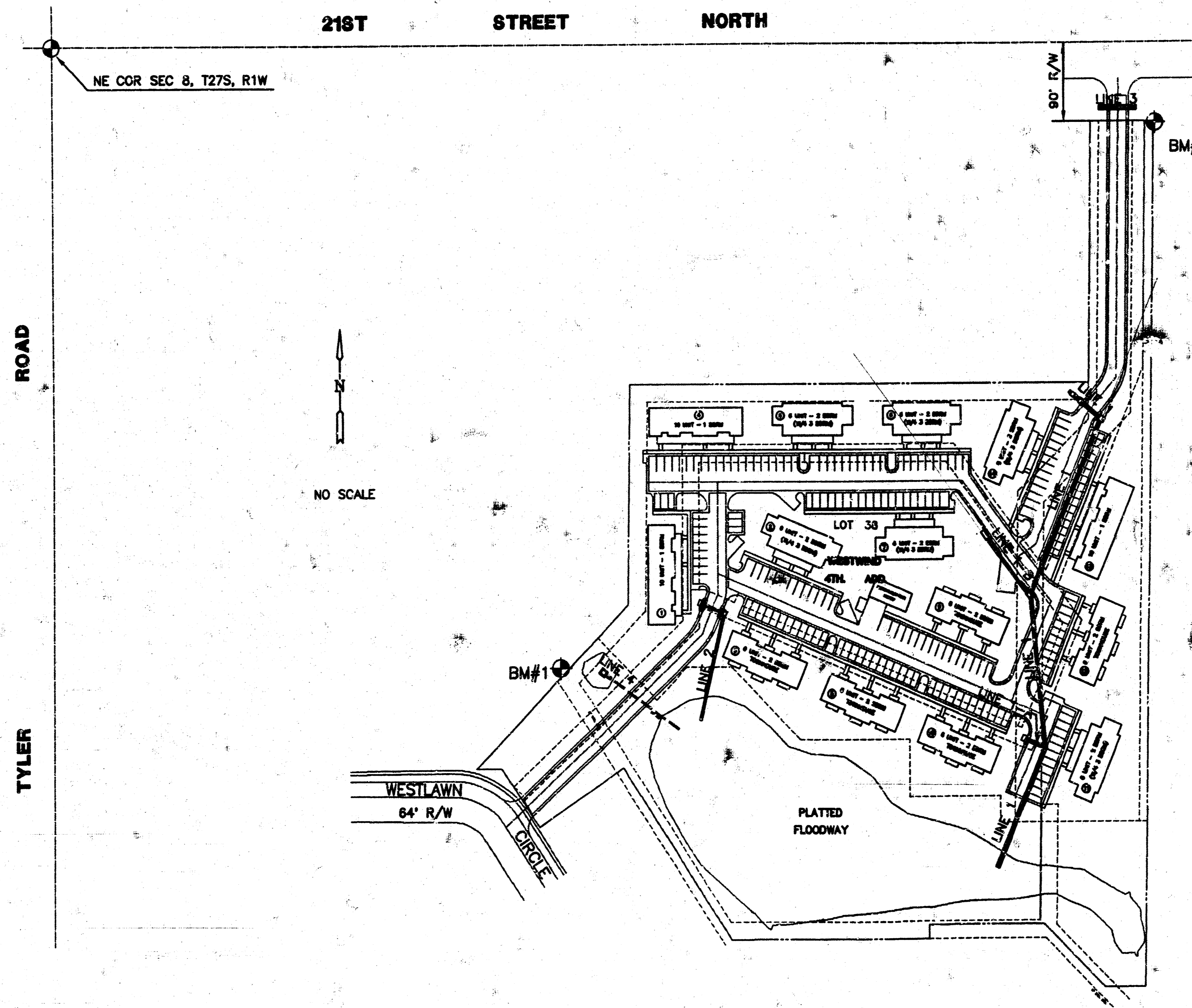
SANITARY SEWERS _____
STORM SEWERS _____
DRIVEWAY APPROACHED _____
WATER MAINS _____
PAVING _____

NOTE TO CONTRACTOR

INSPECTION AND TESTING FOR THIS PROJECT IS TO BE PROVIDED BY A LICENSED CONSULTING ENGINEERING FIRM UNDER CONTRACT WITH THE OWNER/DEVELOPER. SAID INSPECTION TO BE IN ACCORDANCE WITH THE CITY OF WICHITA STANDARD CONSTRUCTION ENGINEERING PRACTICES AND CERTIFIED BY A LICENSED PROFESSIONAL ENGINEER. NO WORK SHALL BE PERFORMED IN DEDICATED EASEMENTS OR THE PUBLIC RIGHT-OF-WAY BY THE CONTRACTOR WITHOUT SUCH INSPECTION NOR SHALL ANY WORK BE COMMENCED IN DEDICATED EASEMENTS OR PUBLIC RIGHT-OF-WAY WITHOUT WRITTEN AUTHORIZATION BY THE CITY ENGINEER.

GENERAL NOTES

1. THE TOPS OF INLETS AS NOTED ON THE PLANS MAY VARY SO AS TO MEET PROPOSED TOP OF CURB ELEVATIONS OR PAVEMENT ELEVATIONS. THE FIELD ENGINEER SHALL LOCATE INLETS WITH REFERENCE TO PROPOSED PAVING PLANS OF THE PERTINENT STREETS.
2. ALL CONCRETE SHALL BE STANDARD PAVING MIX UNLESS OTHERWISE NOTED.
3. THE CONTRACTOR SHALL BE RESPONSIBLE FOR PRESERVING PROPERTY IRONS. THE CONTRACTOR SHALL BE REQUIRED TO RE-ESTABLISH ANY PROPERTY IRONS WHICH ARE DAMAGED OR DESTROYED BY HIS CONSTRUCTION OPERATIONS. SUCH IRONS SHALL BE RE-ESTABLISHED BY A LICENSED LAND SURVEYOR IN ACCORDANCE WITH STATE LAWS.
4. TREES TO BE REMOVED ARE MARKED. ALL TREES WHICH IN THE OPINION OF THE FIELD ENGINEER CAN BE SAVED, SHALL BE SAVED.
5. CONTRACTOR SHALL NOTIFY UTILITY COMPANIES OF CONSTRUCTION SCHEDULING.
6. EXISTING UTILITIES AND THEIR LOCATIONS, AS SHOWN ON THE PLANS REPRESENT THE BEST INFORMATION OBTAINABLE FOR DESIGN. LOCATION INFORMATION HAS BEEN OBTAINED FROM THE VARIOUS COMPANIES AND IS EITHER FROM COMPANY UTILITY DRAWINGS OR COMPANY PROVIDED FIELD LOCATIONS. THE PLAN LOCATIONS SHOWN ARE NOT GUARANTEED. ADDITIONAL EXISTING UTILITIES MAY ALSO BE ENCOUNTERED.
7. CONTRACTOR WILL BE REQUIRED TO PROVIDE A MINIMUM ADVANCE NOTICE OF FORTY-EIGHT (48) HOURS TO UTILITY COMPANIES PRIOR TO STARTING ANY EXCAVATION AS FOLLOWS:
 KANSAS ONE-CALL 1-800-344-7233
 OR 687-2470 (LOCAL WICHITA)
 THE CONTRACTOR MUST NOTIFY THE FOLLOWING IN CASE OF AN EMERGENCY:
 SOUTHWESTERN BELL TELEPHONE COMPANY 1-571-2115
 CABLEVISION 282-0681
 KGA&E (GAS DIST.) 832-0012
 KGA&E (ELECTRIC) 284-1141
 ARKLA GAS COMPANY 942-8350 OR 283-8161
 CITY OF WICHITA WATER & SEWER DEPARTMENT 268-4600
8. RUBBLE FROM THE REMOVAL OF MISCELLANEOUS STRUCTURES AND EXCESS EXCAVATION WHICH IS TO BE WASTED SHALL BE DISPOSED OF ON SITES TO BE PROVIDED BY THE CONTRACTOR. THESE SITES SHALL BE APPROVED BY THE ENGINEER AS TO SUITABILITY, APPEARANCE AND SITE LOCATION LOCATIONS THAT, IN THE OPTION OF THE ENGINEER, WILL LEAVE AN UNSIGHTLY APPEARANCE WILL NOT BE APPROVED. ALL DISPOSAL SITES MUST BE APPROVED BY THE KANSAS DEPARTMENT OF HEALTH AND ENVIRONMENT. MATERIAL EITHER STOCKPILED OR DISPOSED OF IN A FLOOD PLAIN WOULD REQUIRE A KANSAS STATE BOARD OF AGRICULTURE PERMIT. ANY MATERIAL DUMPED IN WATERS OF THE UNITED STATES OR WETLANDS IS SUBJECT TO U.S. CORPS OF ENGINEERS PERMITTING REGULATIONS. ANY MATERIAL BURIED OR STOCKPILED BEYOND APPROVED CONSTRUCTION LIMITS WOULD REQUIRE ADDITIONAL ARCHAEOLOGICAL INVESTIGATIONS UNLESS BURIED IN A PREVIOUSLY APPROVED BORROW LOCATION.
9. COST OF EXCAVATION, HAULING, AND DUMPING OF EXCESS EXCAVATION SHALL BE SUBSIDIARY TO THE PROJECT.
10. CONTRACTOR SHALL FINAL GRADE EASEMENTS ACCORDING TO THE PROPOSED PROFILE INDICATED IN THESE PLANS.



INDEX TO DRAWINGS

SHEET NO.	DESCRIPTION
1	TITLE SHEET
2	LINE 1
3	LINES 1-A, 1-B LINE 2
4	LINES 3 & LINE 4
5	TYPE 1-A CURB INLET DETAIL (5' OPENING)
6	TYPE 1-A CURB INLET DETAIL (10' OPENING)
7	TYPE "P" MANHOLE DETAILS
8	REINF. CONCRETE AREA INLET DETAILS

BENCHMARKS

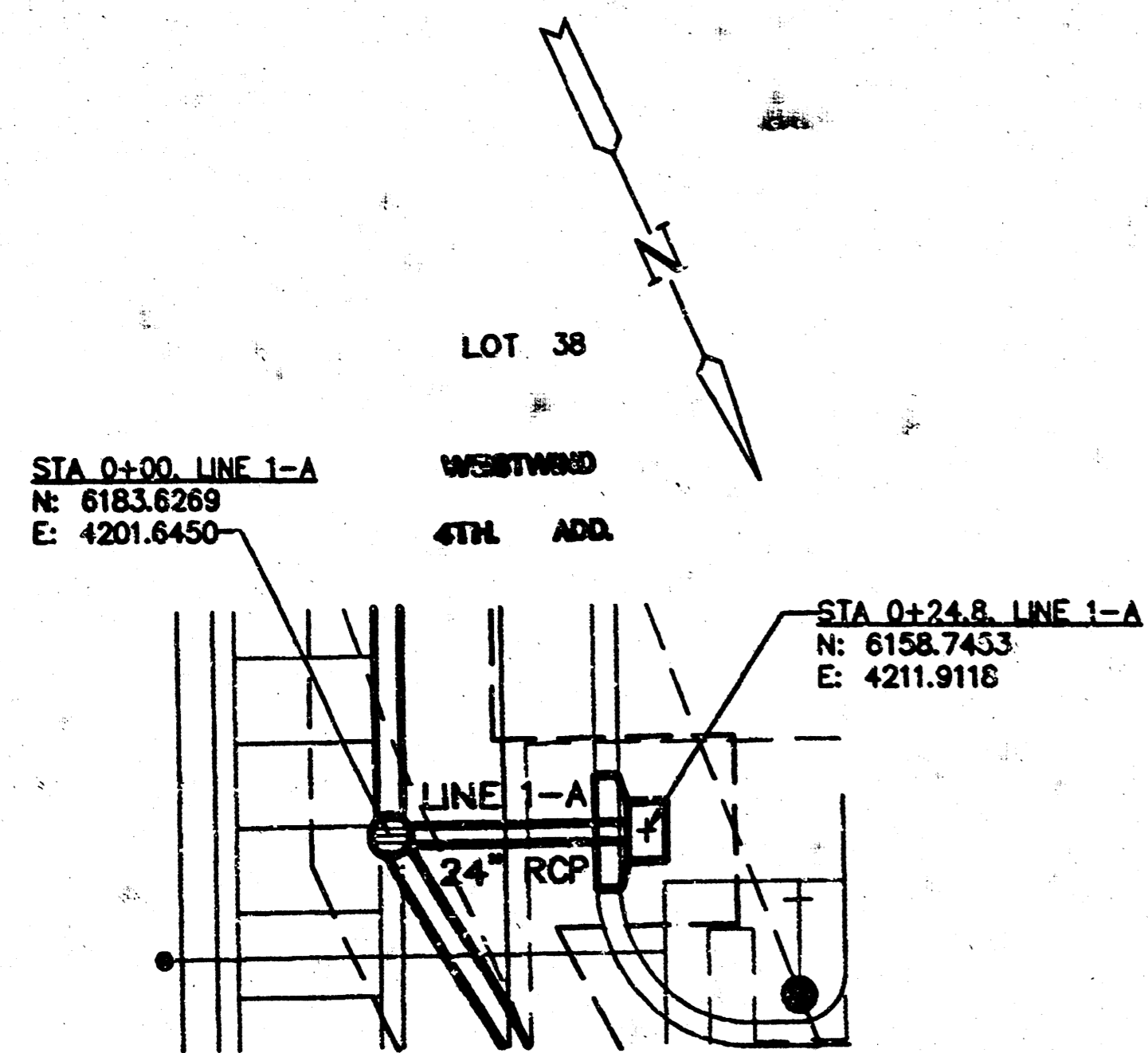
- BM #1- PK NAIL SET IN S. EDGE OF MANHOLE 114' N. & 90' E. OF THE S.W. COR. OF LOT 38, WESTWIND 4TH ADDITION.
ELEV. = 168.15 CITY DATUM
- BM #2 RR SPIKE SET IN S. SIDE OF POWER POLE 60' S. OF CL 21ST ST. NO. AT THE N.E. COR. OF LOT 38, WESTWIND 4TH ADDITION.
ELEV. = 168.89 CITY DATUM
AS BUILT 5-11-93

*Booked
4-2-94
MOS
D-223*

*DEAN S. SELLERS
LICENSED PROFESSIONAL ENGINEER
KANSAS
3683
12-19-93*

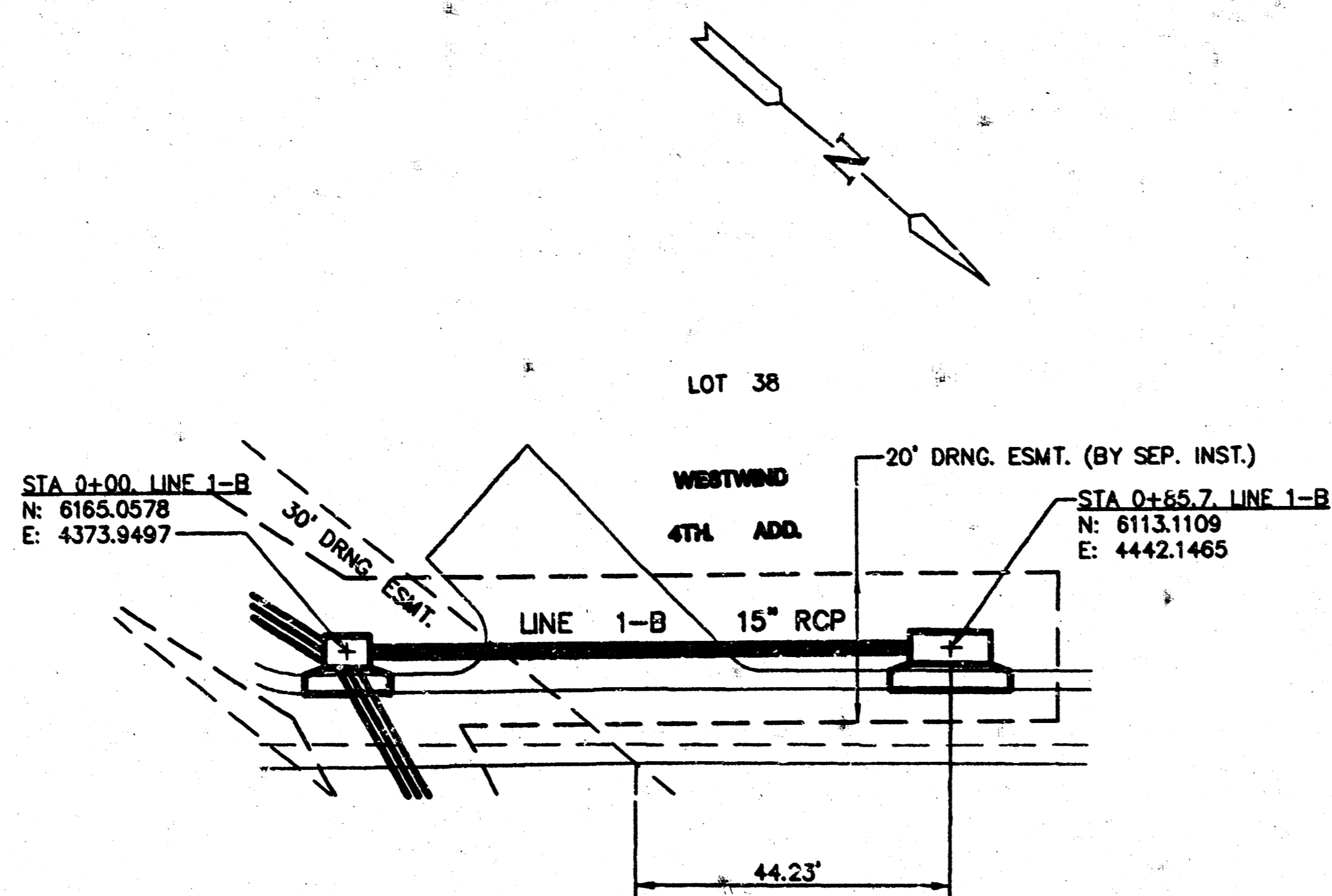
	BERKSHIRE III	Designed by KUL
	PRIVATE STORM SEWER PLANS	Checked by K.M.S.
MID-KANSAS ENGINEERING CONSULTANTS INC. 3500 NORTH ROCK ROAD BUILDING #300 WICHITA, KANSAS 67226		Date 12/92 Job No. 9246SW51
(316) 636-5566		Sheet 1 of 8

**BERKSHIRE III APARTMENTS
STORM WATER SEWER
INDEX NO. 607861**



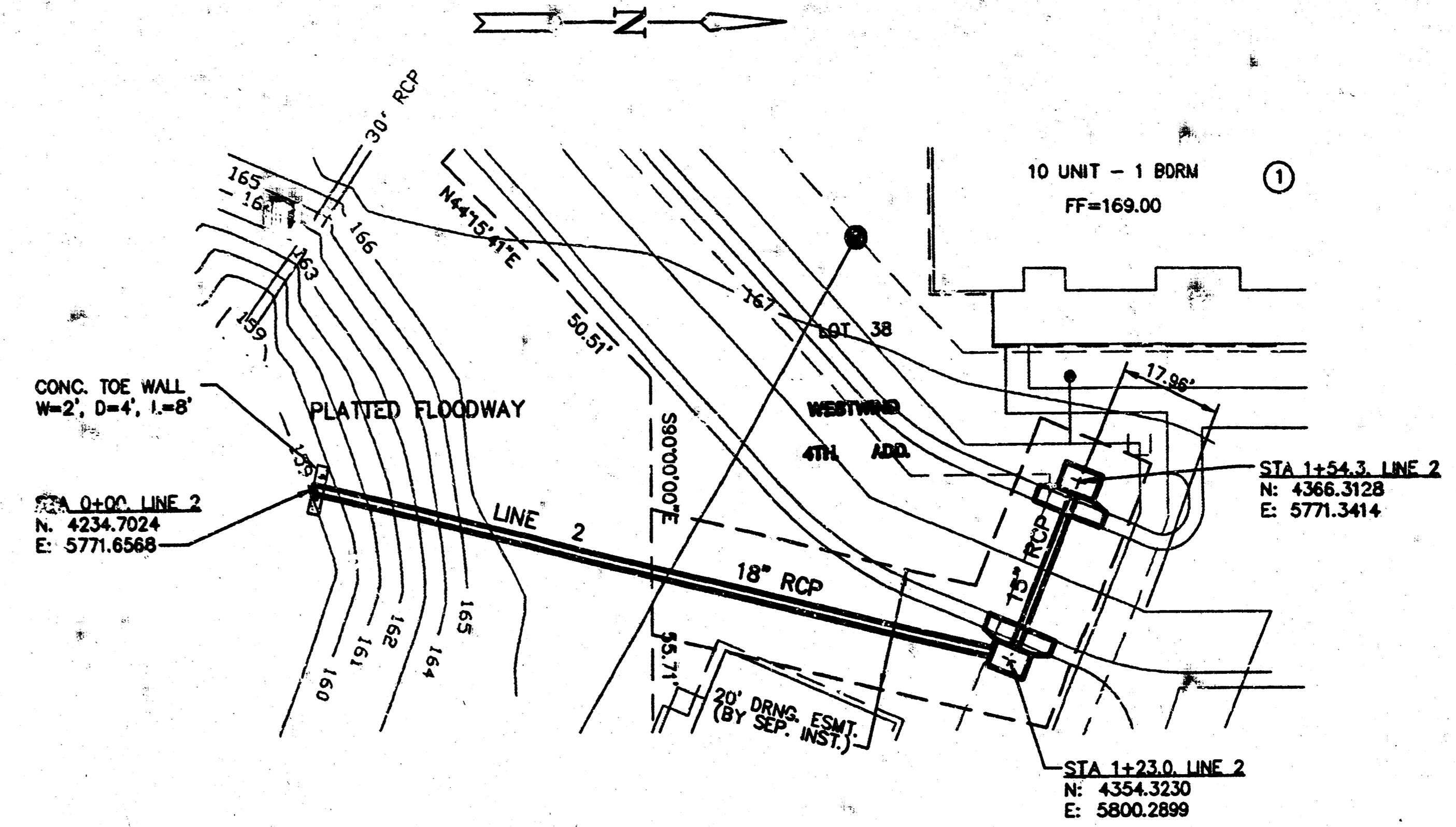
PLAN LINE 1-A

SCALE: 1"=20'



PLAN LINE 1-B

SCALE: 1"=20'



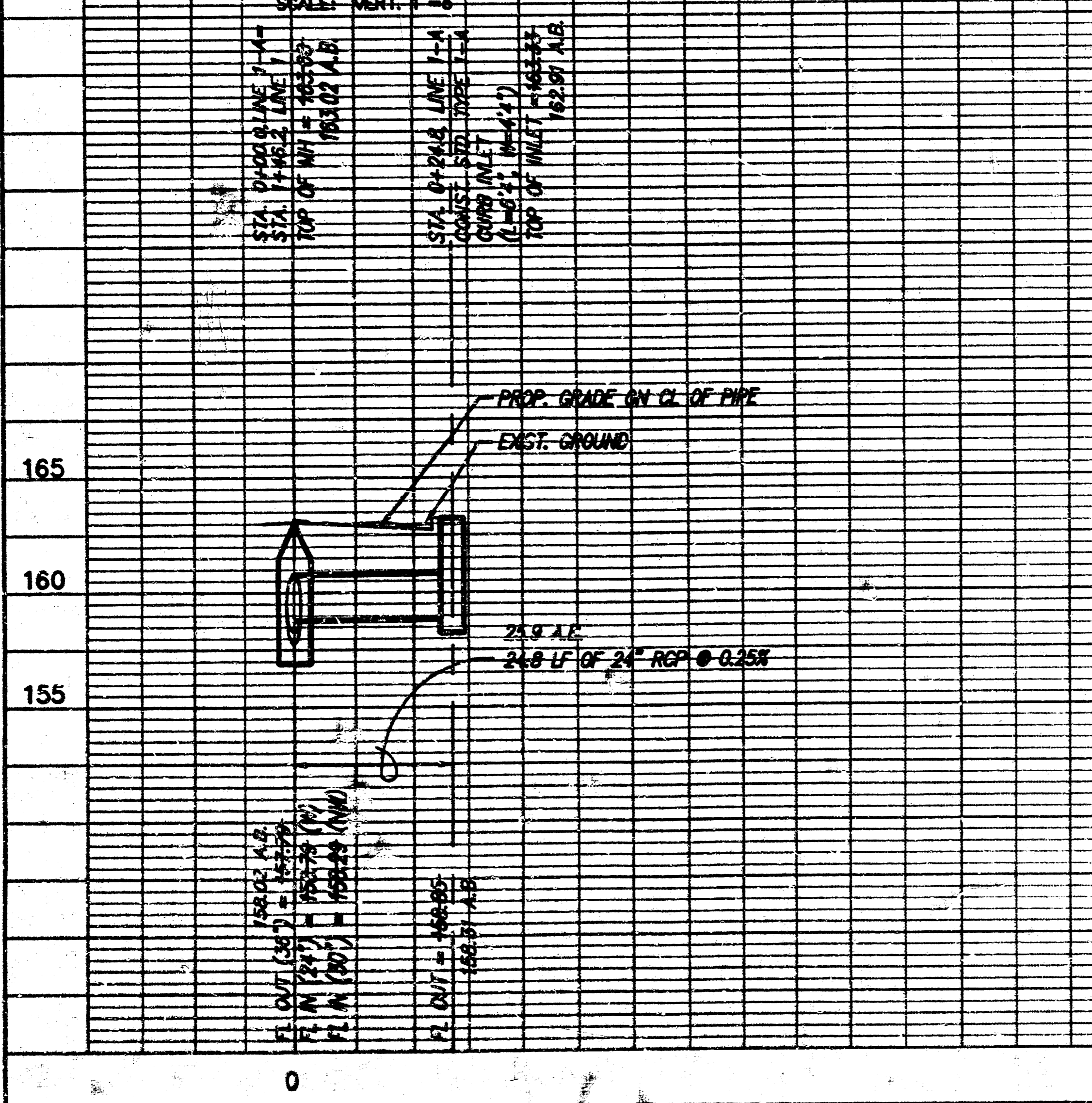
PLAN LINE 2

SCALE: 1"=20'

AS BUILT 5-11-93

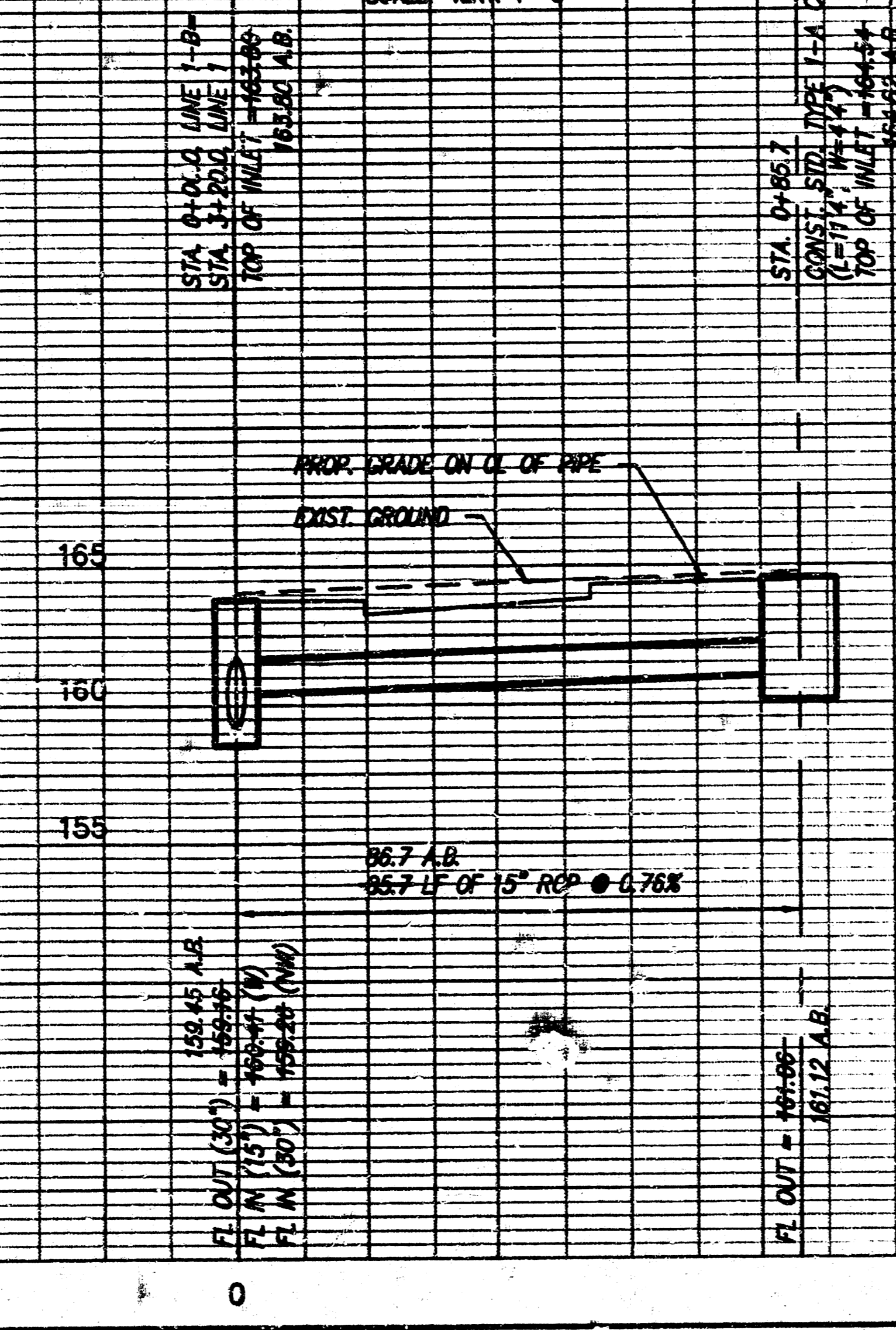
PROFILE LINE 1-A

SCALE: HORIZ. 1"=20'
SCALE: VERT. 1"=6'



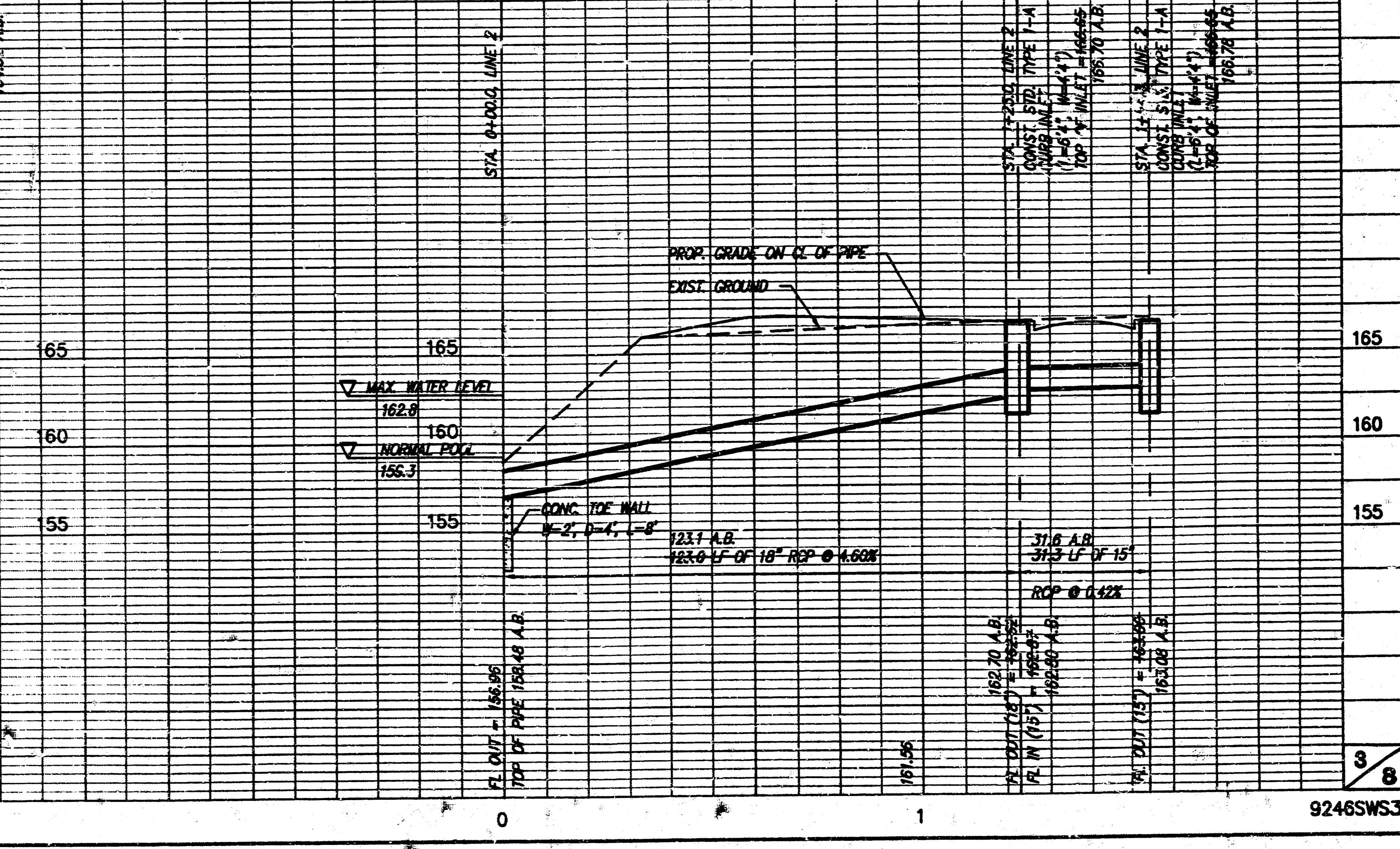
PROFILE LINE 1-B

SCALE: HORIZ. 1"=20'
SCALE: VERT. 1"=6'

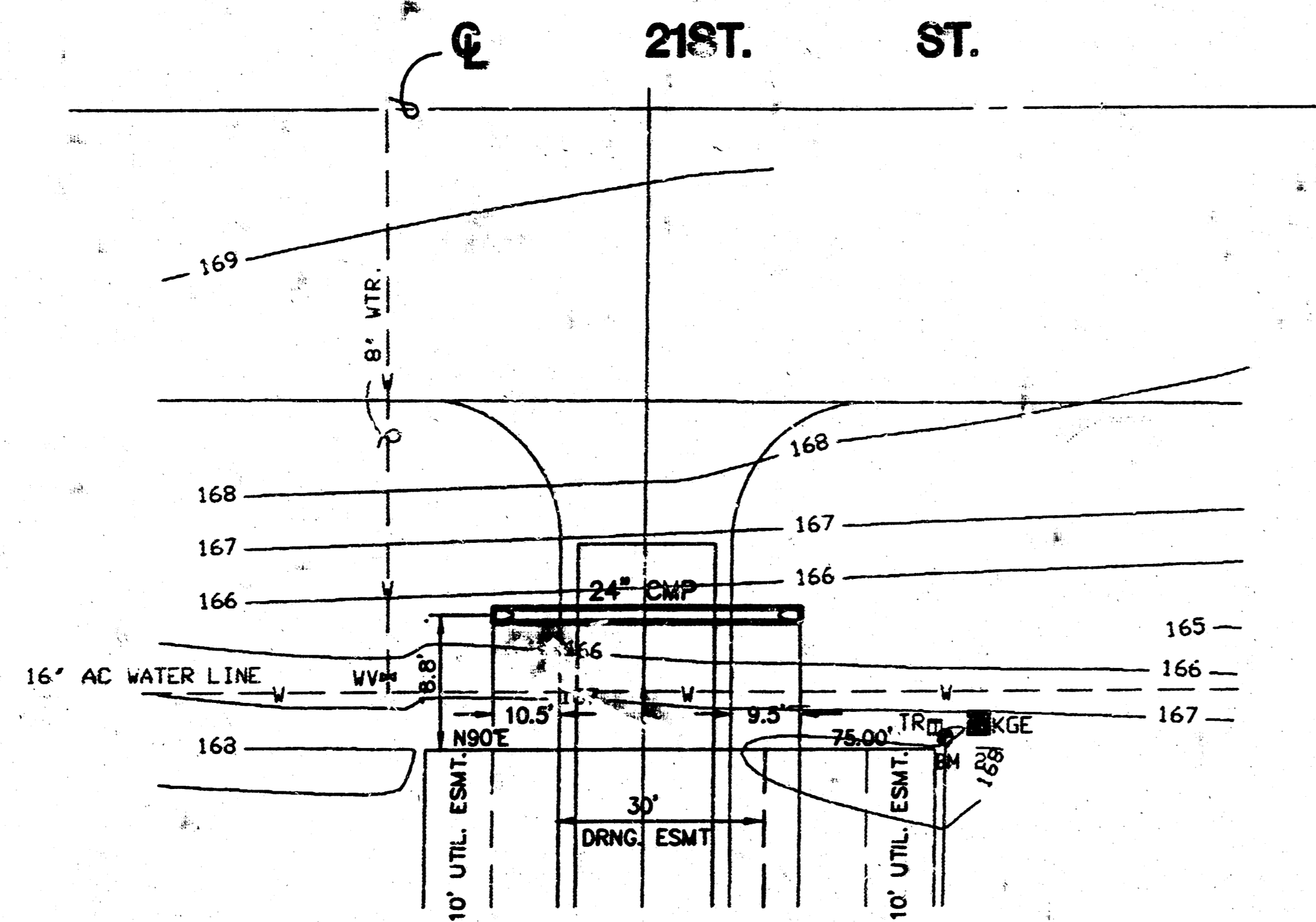


PROFILE LINE 2

SCALE: HORIZ. 1"=20'
SCALE: VERT. 1"=6'

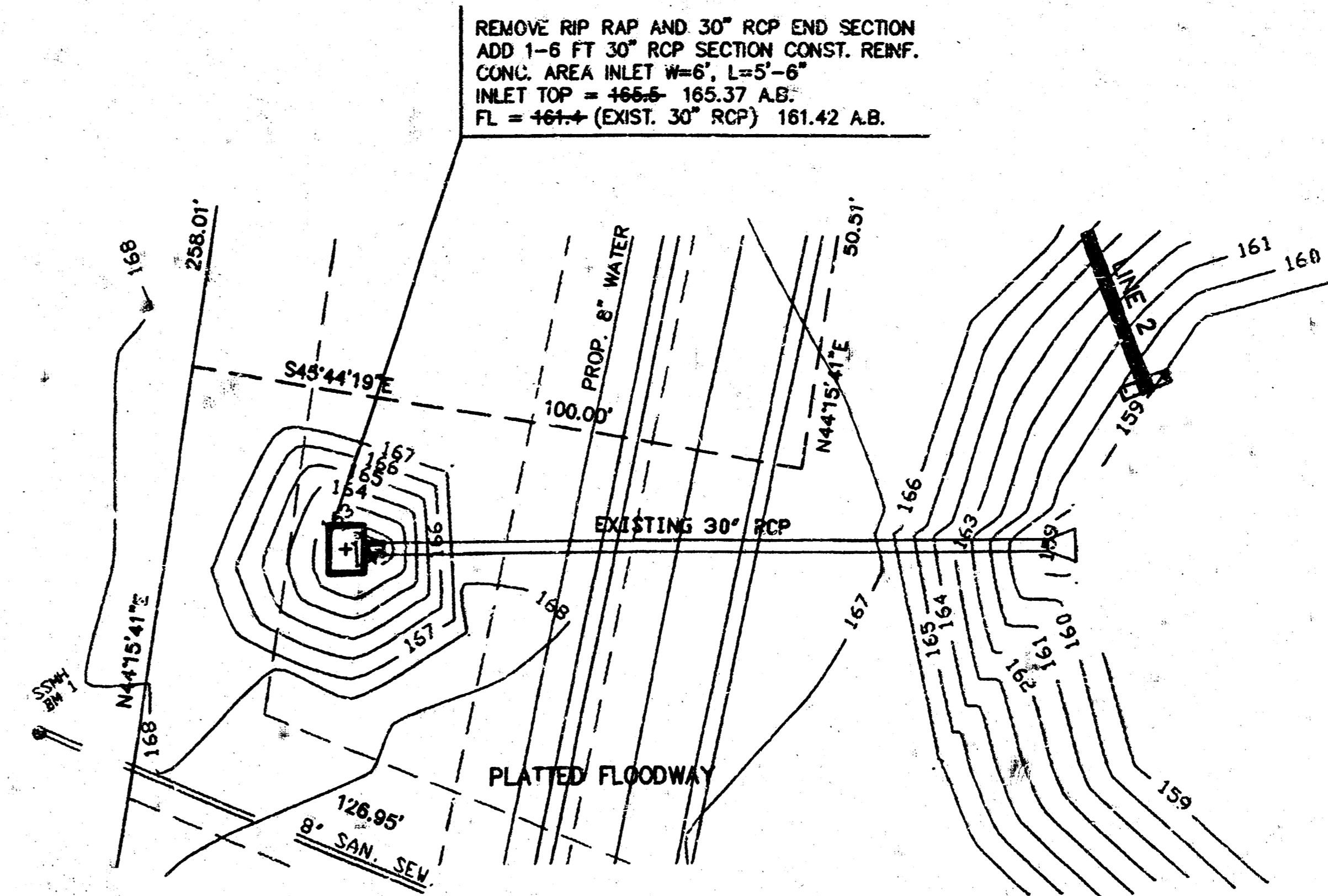


**BERKSHIRE III APARTMENTS
STORM WATER SEWER
INDEX NO. 607861**



PLAN LINE 3

SCALE: 1"=20'



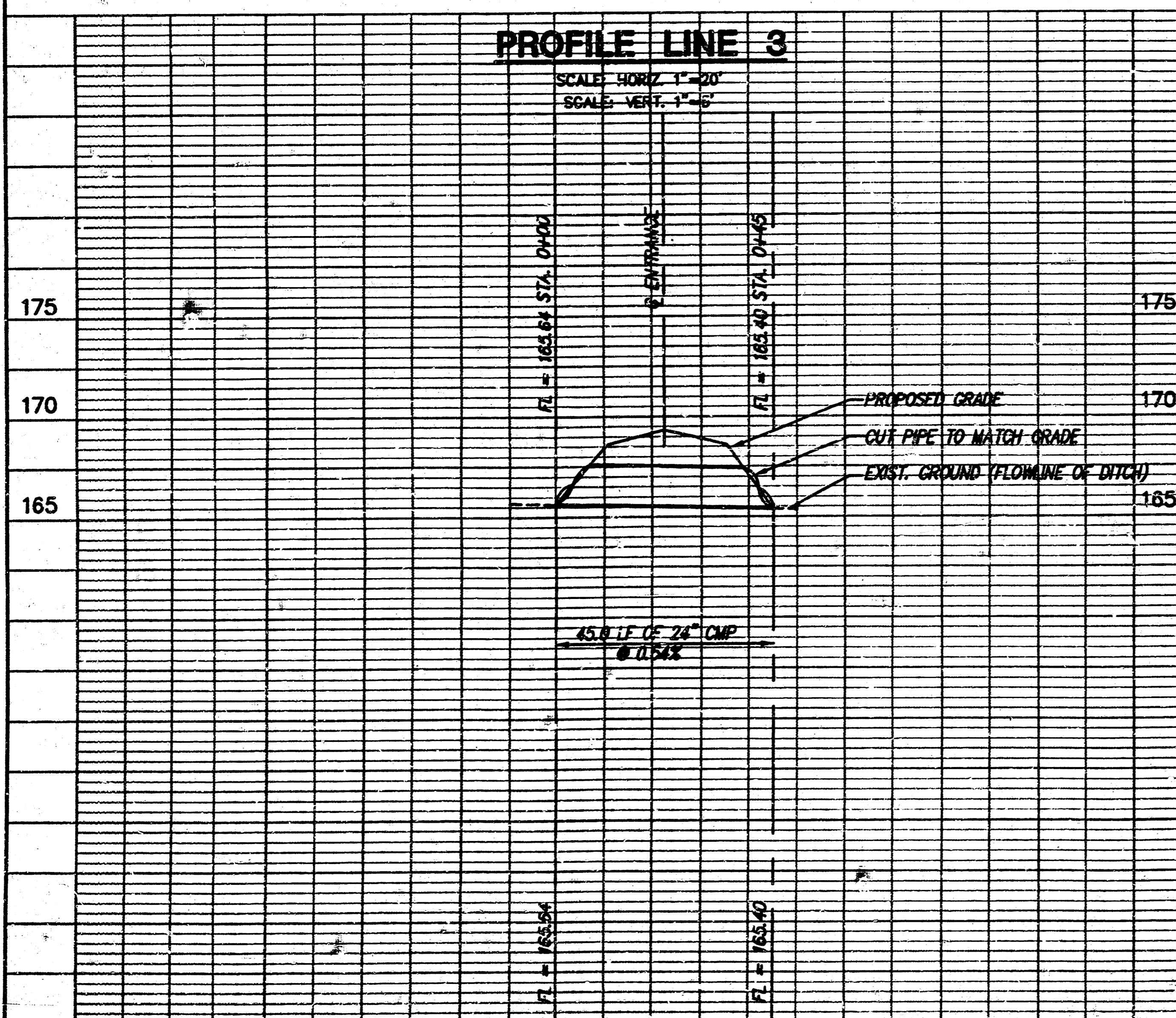
PLAN LINE 4

SCALE: 1"=20'

AS BUILT 5-11-93

PROFILE LINE 3

SCALE: HORIZ. 1"=20'
SCALE: VERT. 1"=6'



PROFILE LINE 4

SCALE: HORIZ. 1"=20'
SCALE: VERT. 1"=6'

