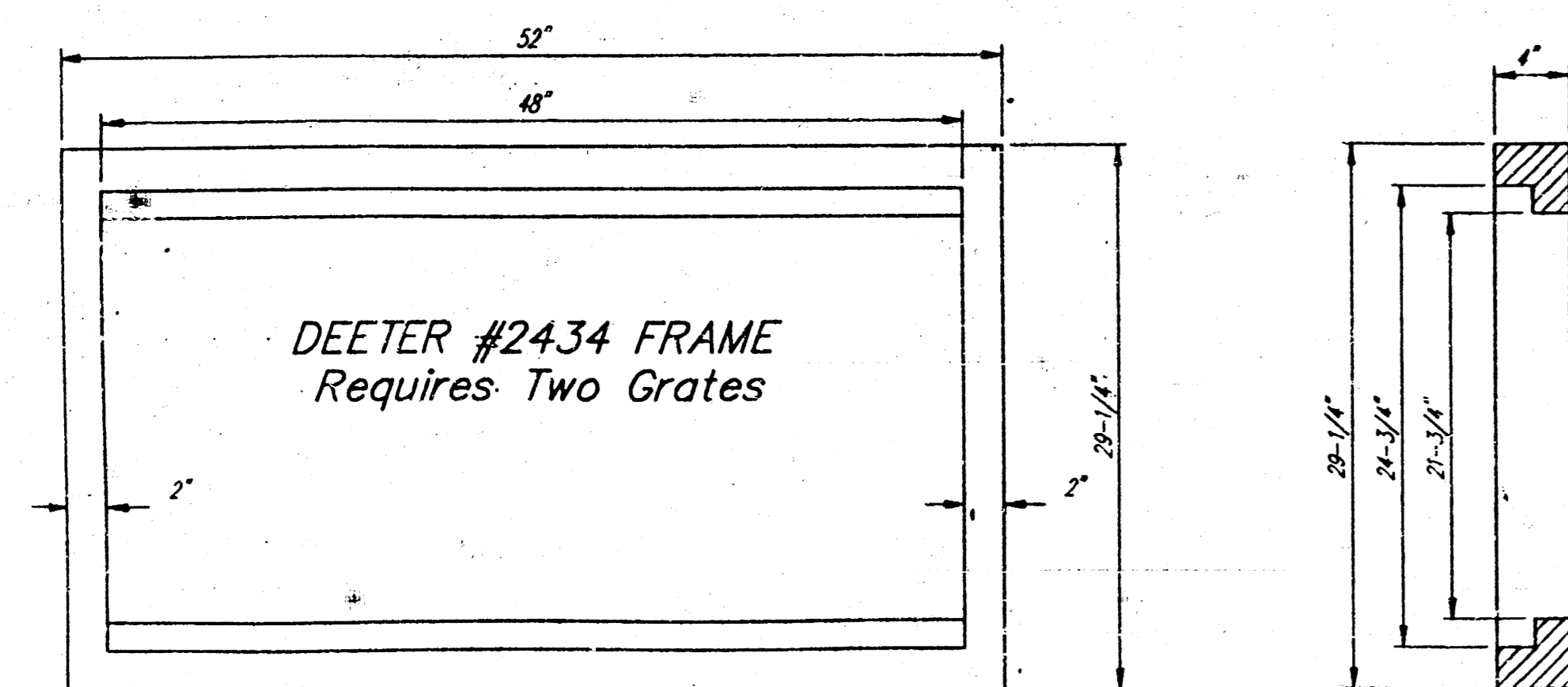
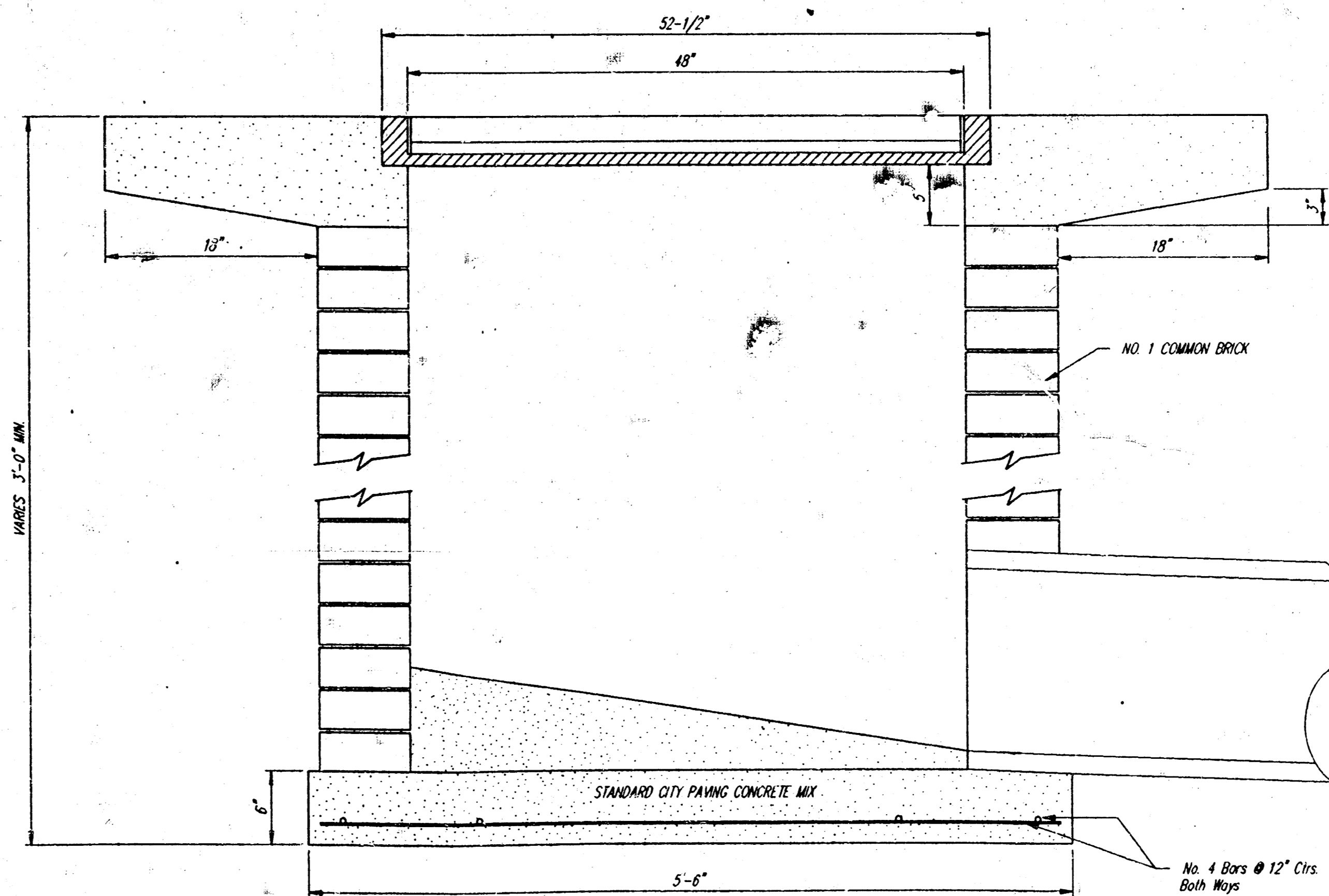
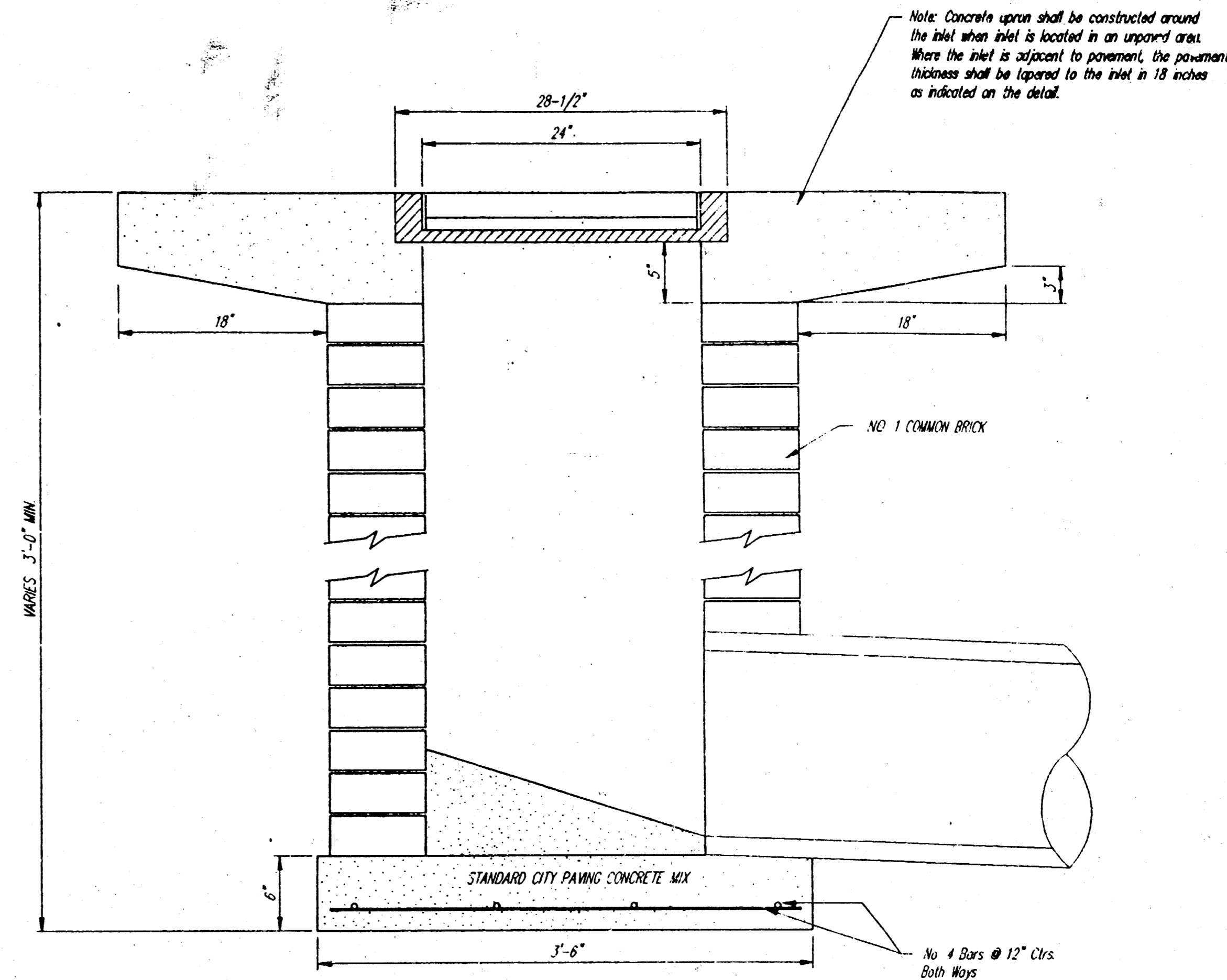
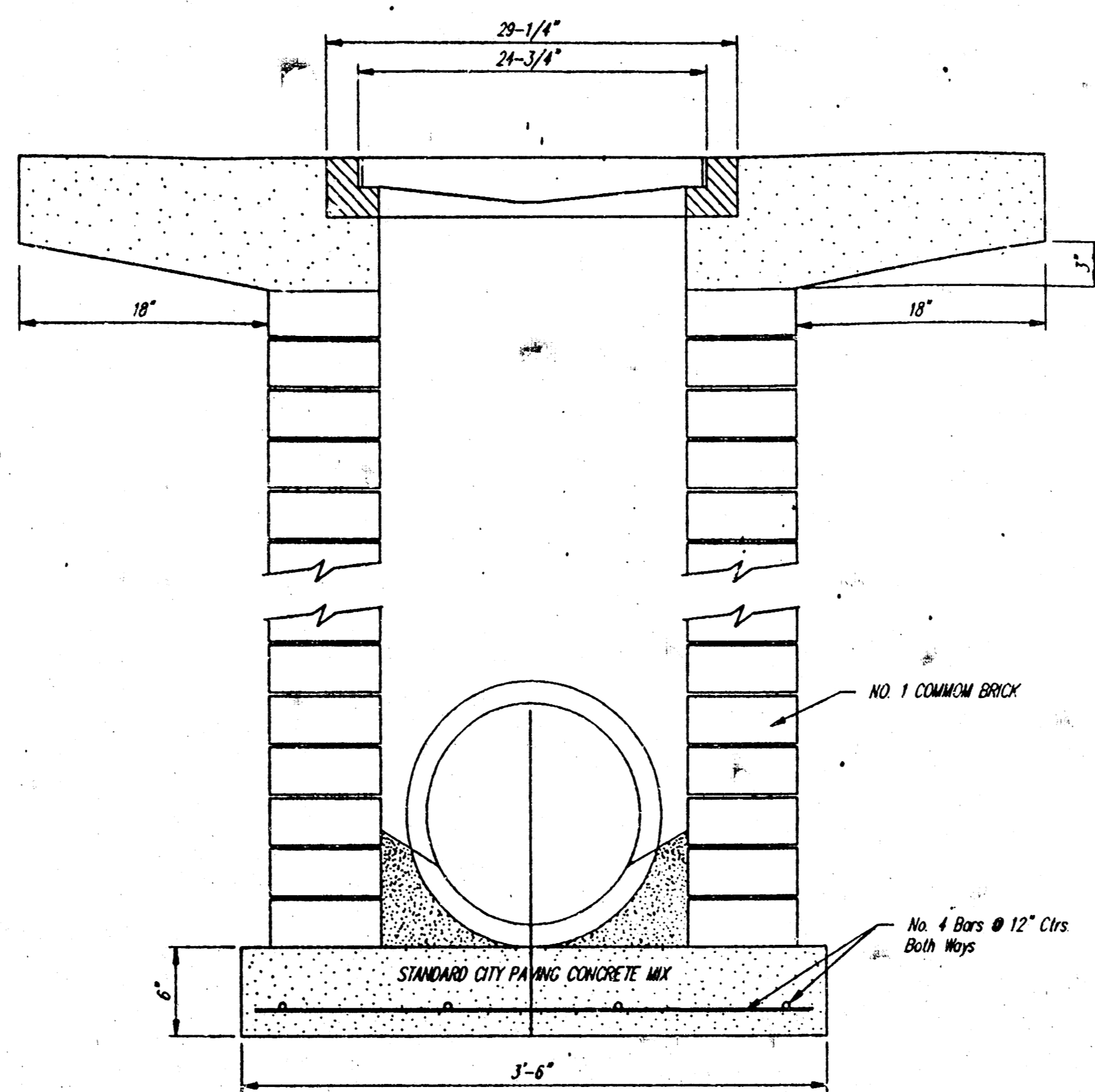


DEETER #2433 GRATE

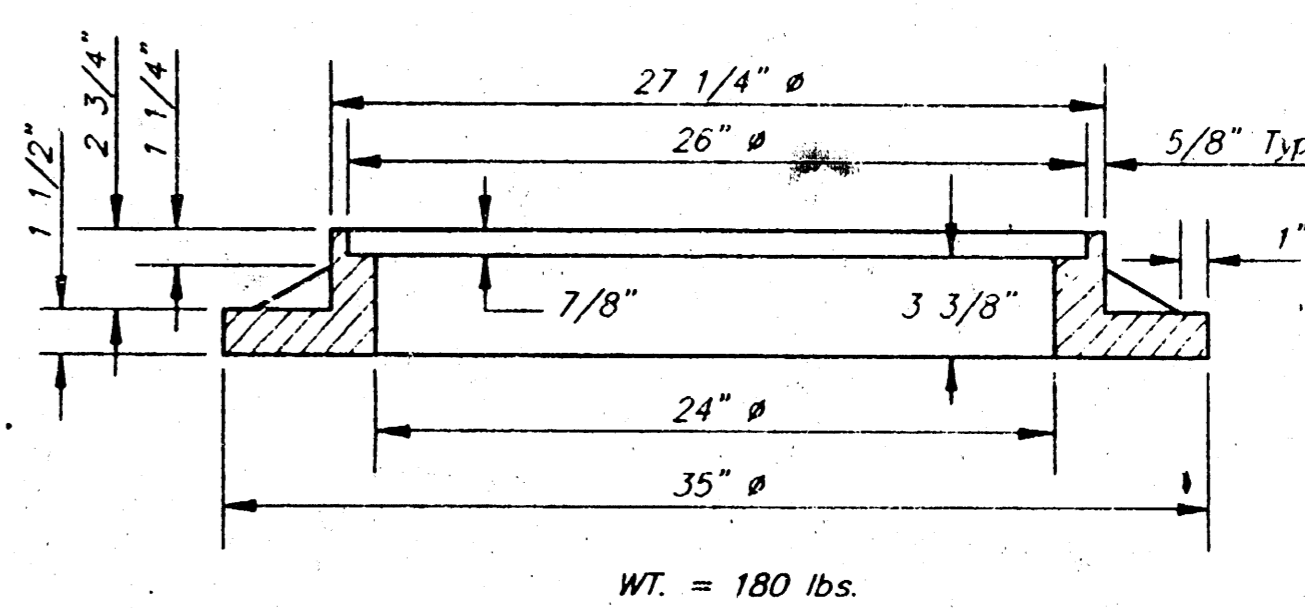
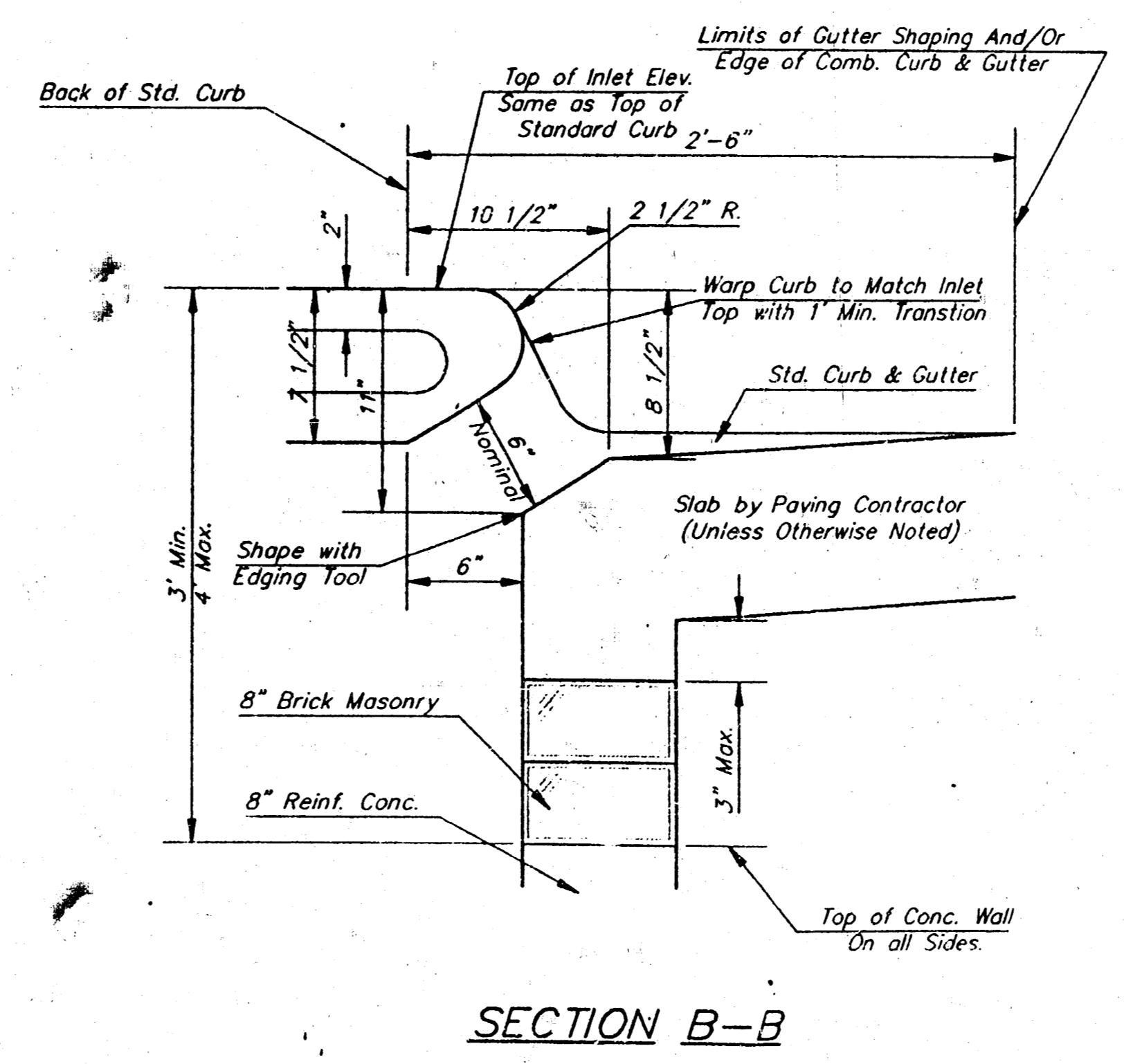
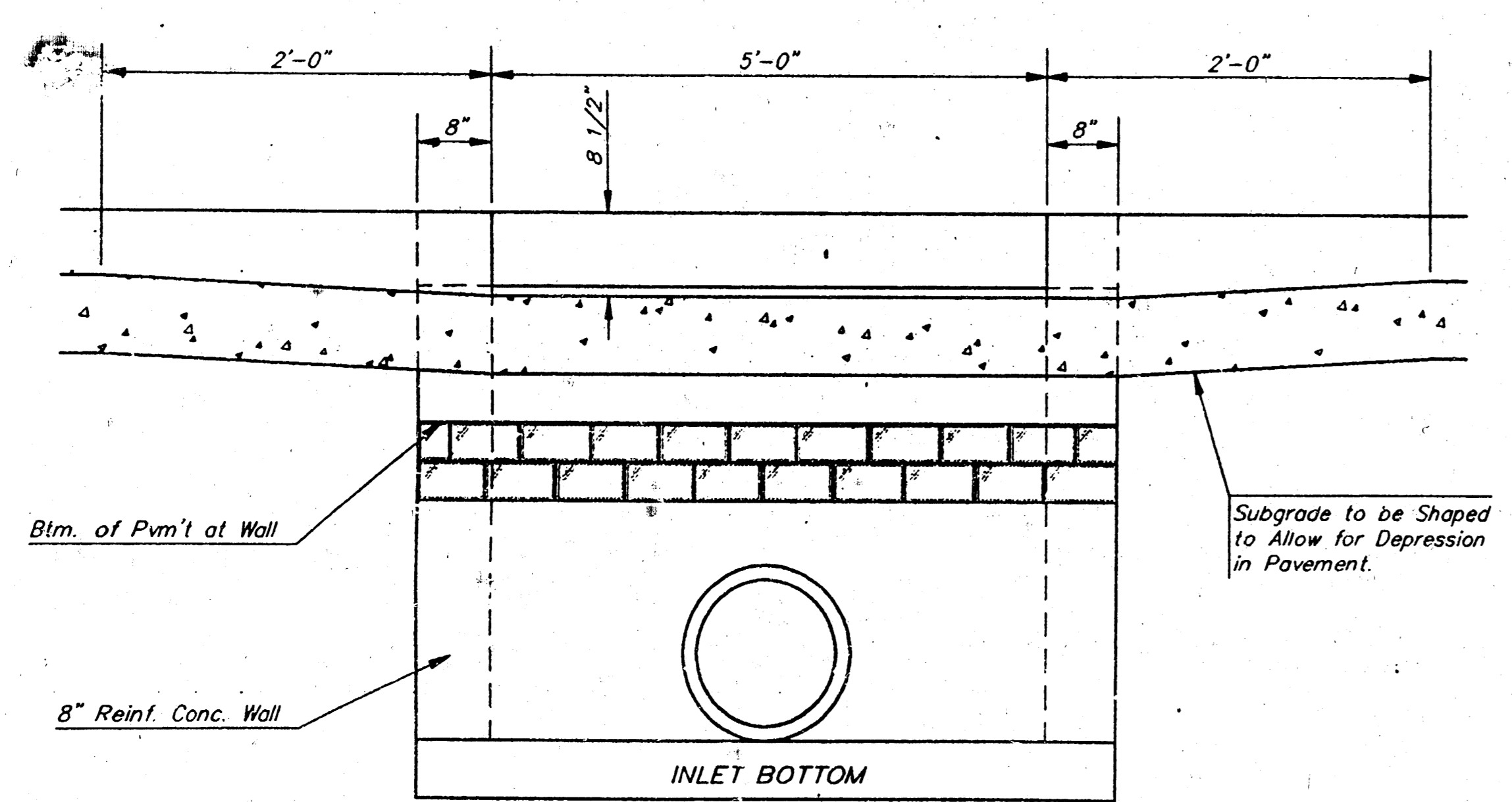
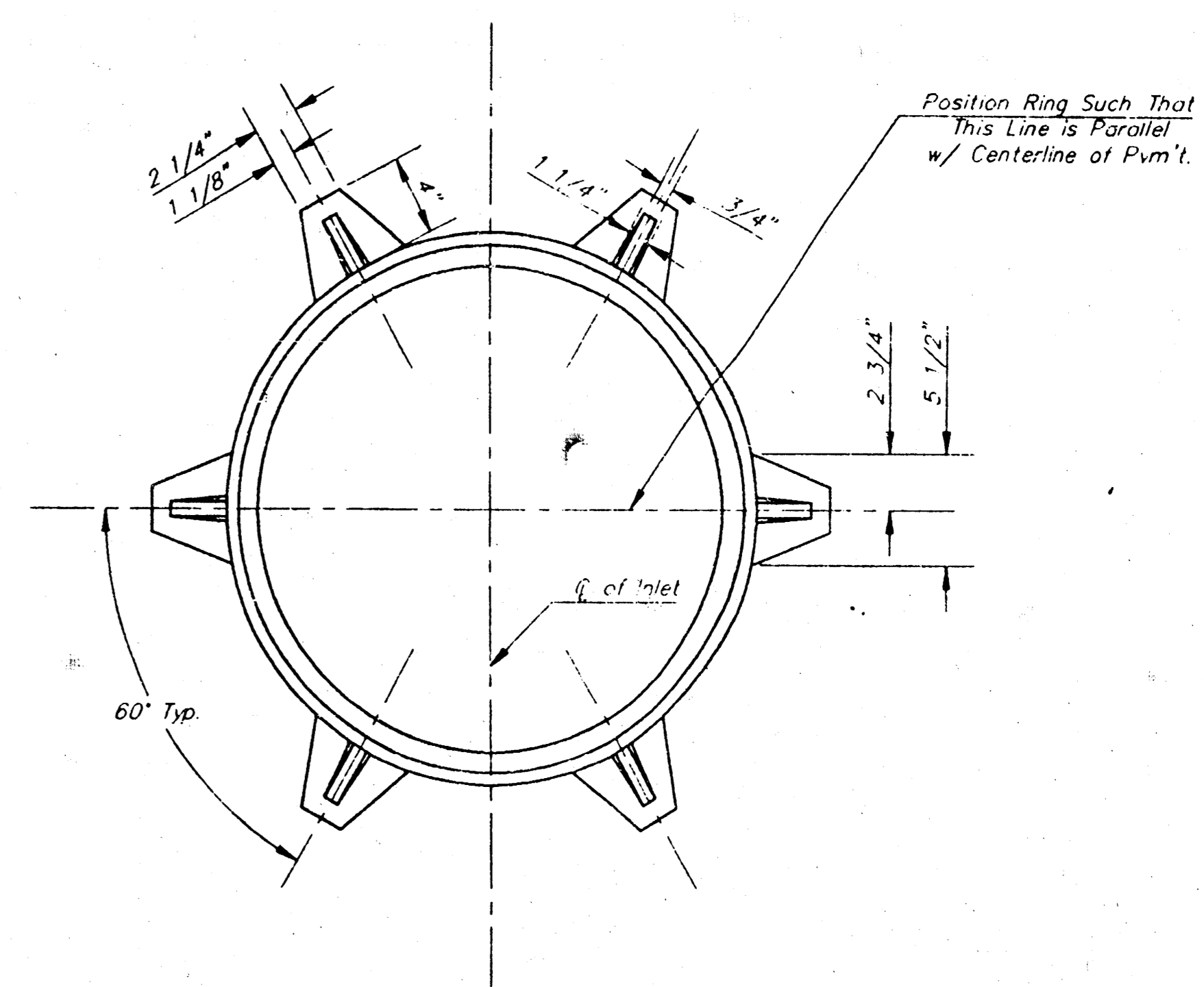
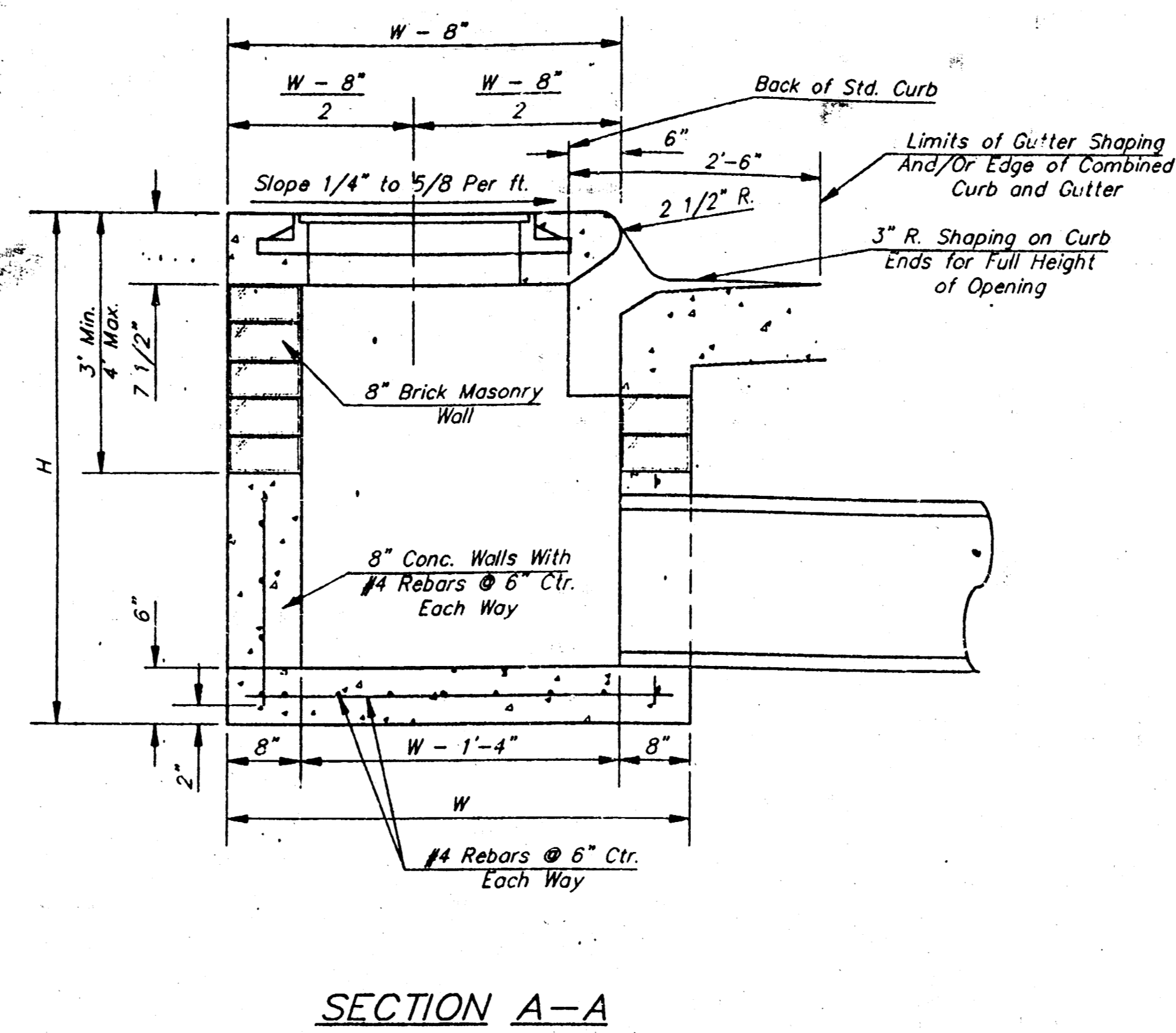
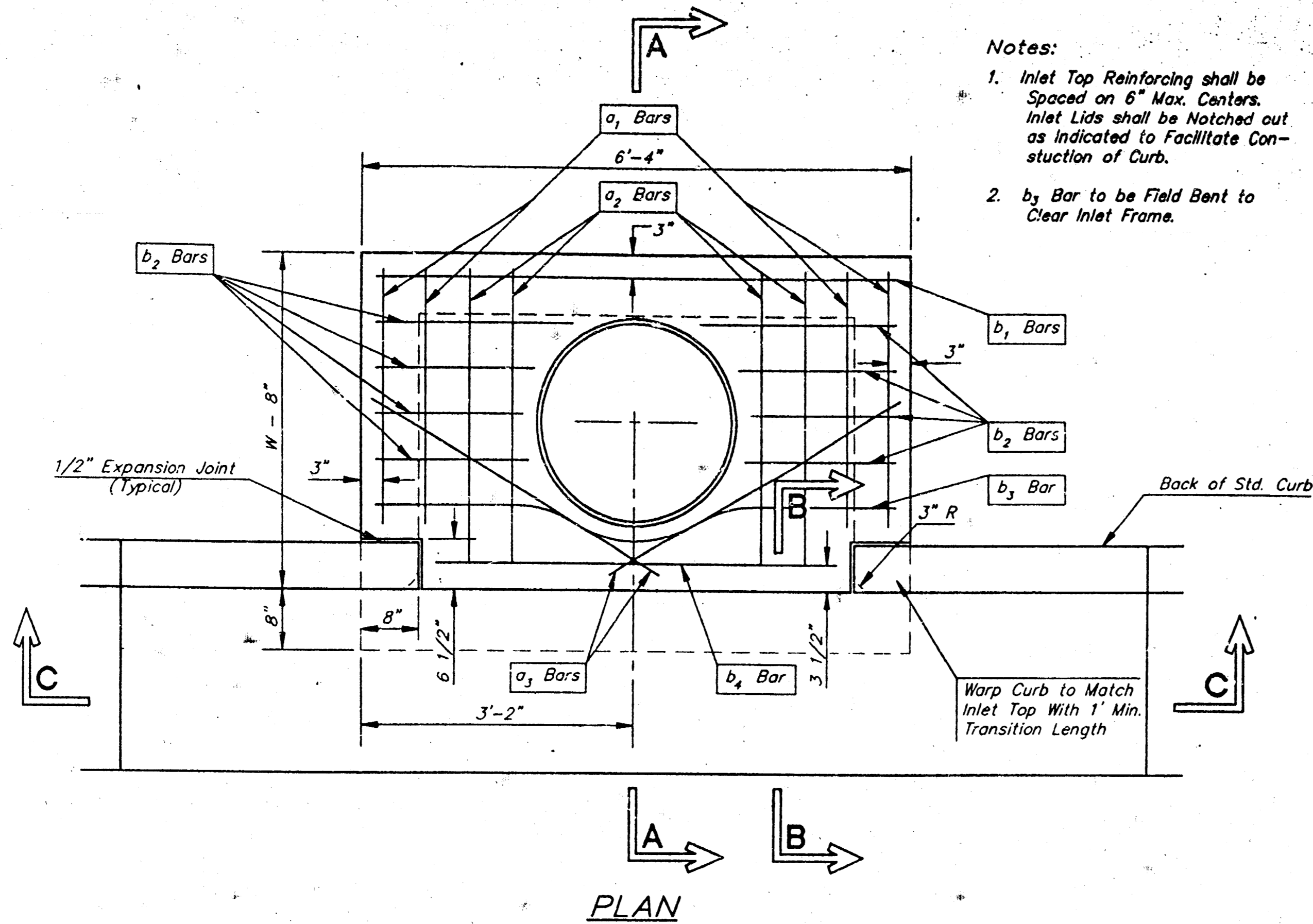
24" x 24" Frame and Grate Detail



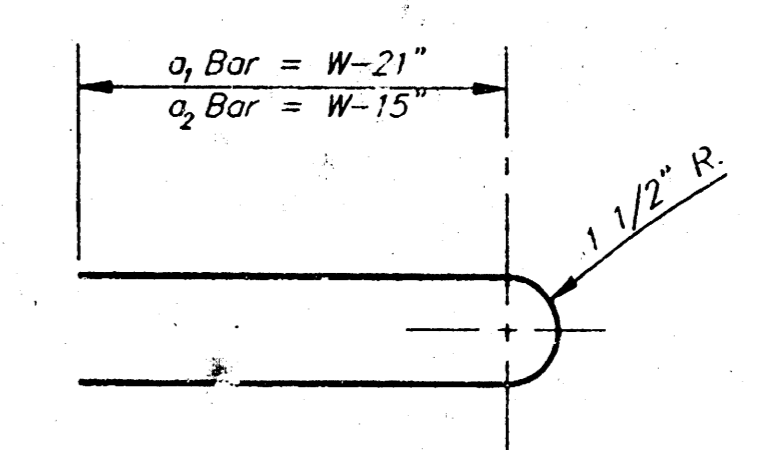
Double 24" x 24" Frame Detail



| | |
|--------------------|---|
| DROP INLET DETAILS | 2 |
| 436 PPS (607861) | 6 |



MANHOLE RING AND COVER
*See City of Wichita Standard Manhole Ring and Cover Detail Sheet for Cover Details to Be Used With Inlet Frame.



BENDING DIAGRAM

STEEL SCHEDULE

| BAR | a ₁ | a ₂ | a ₃ | b ₁ | | | | b ₂ | b ₃ | b ₄ | Wt. Lbs. | |
|--------|----------------|----------------|----------------|----------------|---------|---------|---------|----------------|----------------|----------------|----------|---------|
| | | | | W=4'-4" | W=5'-4" | W=6'-4" | W=7'-4" | | | | | W=8'-4" |
| NUMBER | 4 | 4 | 2 | 1 | 3 | 5 | 7 | 9 | 6 | 1 | | |
| SIZE | #4 | #4 | #4 | #4 | #4 | #4 | #4 | #4 | #4 | #6 | | |
| LENGTH | W=4'-4" | 5'-7" | 6'-7" | 4'-0" | 6'-1" | - | - | - | 1'-9" | 6'-2" | 4'-8" | 60± |
| | W=5'-4" | 7'-7" | 8'-7" | 5'-0" | - | 6'-1" | - | - | 1'-9" | 6'-2" | 4'-8" | 81± |
| | W=6'-4" | 9'-7" | 10'-7" | 6'-0" | - | - | 6'-1" | - | 1'-9" | 6'-2" | 4'-8" | 101± |
| | W=7'-4" | 11'-7" | 12'-7" | 7'-0" | - | - | - | 6'-1" | 1'-9" | 6'-2" | 4'-8" | 121± |
| | W=8'-4" | 13'-7" | 14'-7" | 8'-0" | - | - | - | - | 6'-1" | 1'-9" | 6'-2" | 141± |

Note: a₃ Bars to be Placed Approx. 2" Below Top of Inlet Cover.

| W | PRE-CAST TOP SIZE | PIPE SIZE | CU. YD. CONC. |
|-------|--------------------|---------------|---------------|
| 4'-4" | 3'-8" 6'-4" 7 1/2" | 21" & SMALLER | 0.38± |
| 5'-4" | 4'-8" 6'-4" 7 1/2" | 24" & 30" | 0.51± |
| 6'-4" | 5'-8" 6'-4" 7 1/2" | 36" & 42" | 0.64± |
| 7'-4" | 6'-8" 6'-4" 7 1/2" | 48" & 54" | 0.77± |
| 8'-4" | 7'-8" 6'-4" 7 1/2" | 60" & 66" | 0.90± |

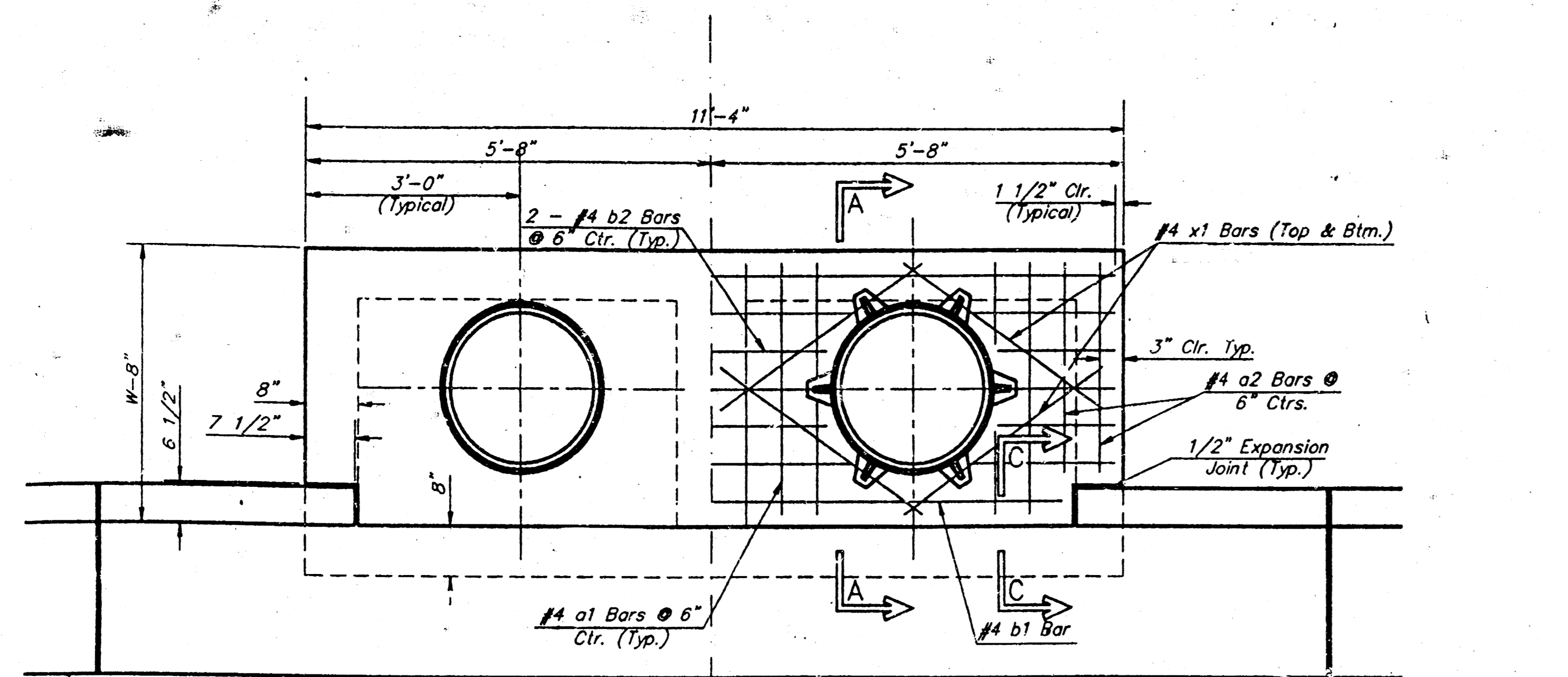
GENERAL NOTES

- Concrete tops to be installed on thin mortar cushion to insure full support along brick walls. Concrete tops may be cast in place or precast. Concrete used for inlet construction shall be concrete pavement mix.
- Contractor shall have the option of constructing 8" brick masonry walls between the concrete inlet base and top on this inlet when W=6'-4" and H=7'-0" or less.
- Inlet invert shall be shaped with 8 sack sand mix concrete to create flow channels and to increase hydraulic efficiency such that the inlet will be self cleaning between all inlet and/or outlet pipes.
- The ends of all pipes installed in inlets shall be cut off flush with the inside face of the inlet wall.

CITY OF WICHITA, KANSAS
STANDARD TYPE 1 INLET DETAILS
LOT 1, BONANZA ADDITION

| | | |
|------------------------------------|---|------------------------------|
| | 924 NORTH MAIN WICHITA, KANSAS 67203 | 316-264-8008 FAX 264-4821 |
| | SAVOY, RUGGLES & BOHM, F. A. ENGINEERING & SURVEYING | |
| PROJECT NUMBER 496 PPS (607861) | | |
| DRAWN J. Long | CHECKED T.C.R. | DATE Sept. 6, 1994 |
| REVISION T.C.R. | | DATE 150E |

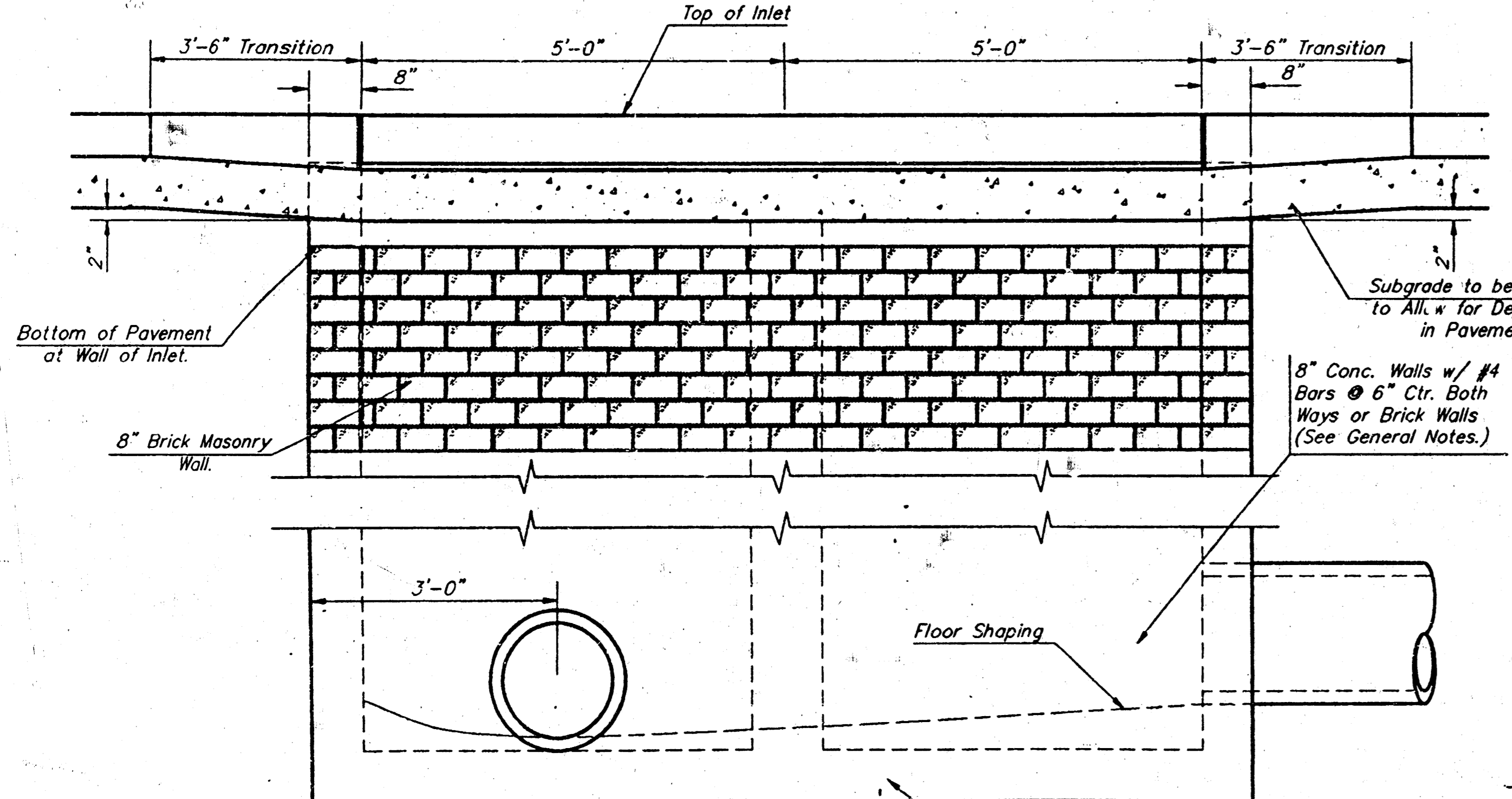
SHEET 3 OF 6



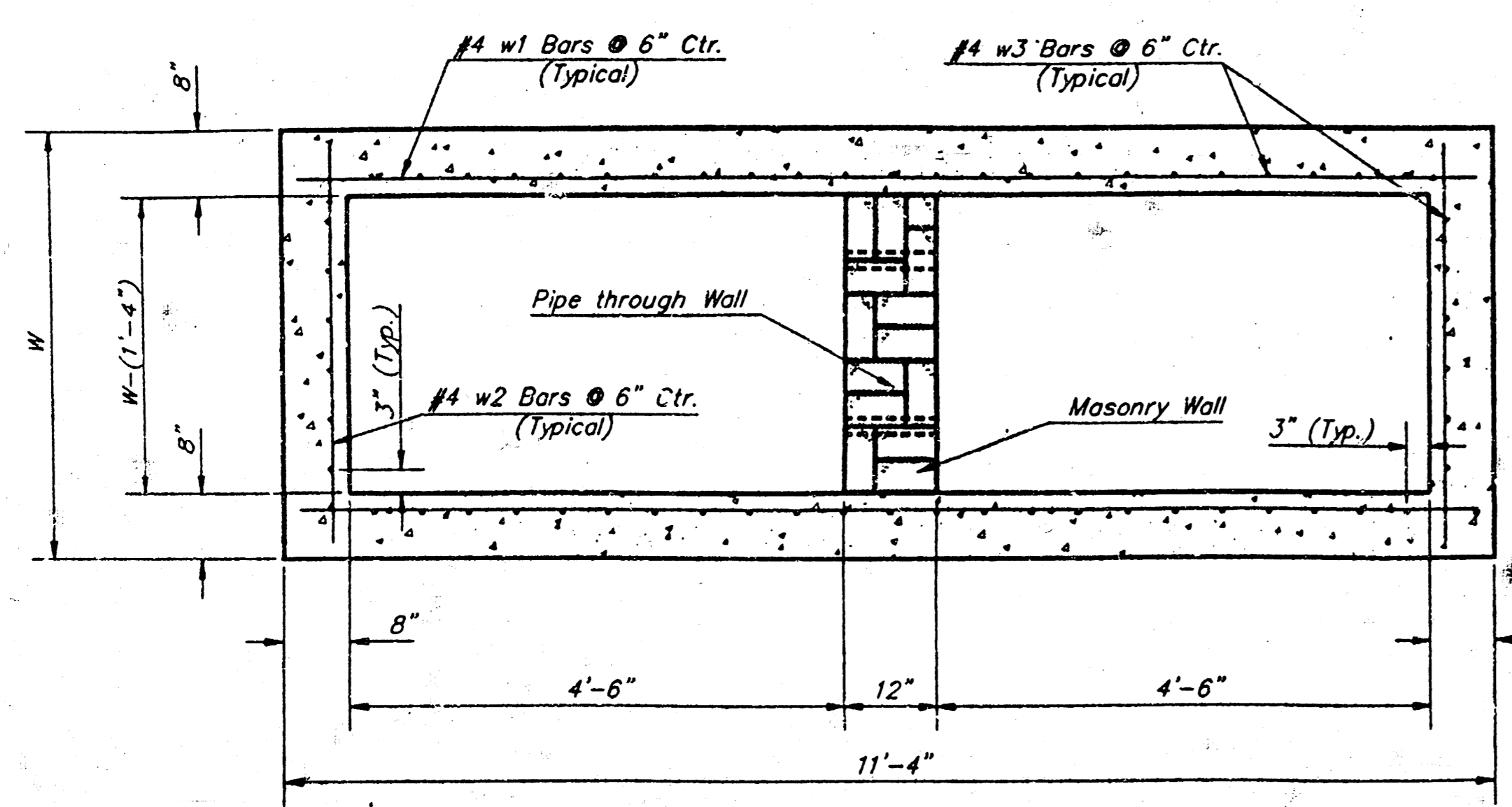
NOTE:
Expansion Joint Only in Curb Area with Concrete Pavement.

PLAN

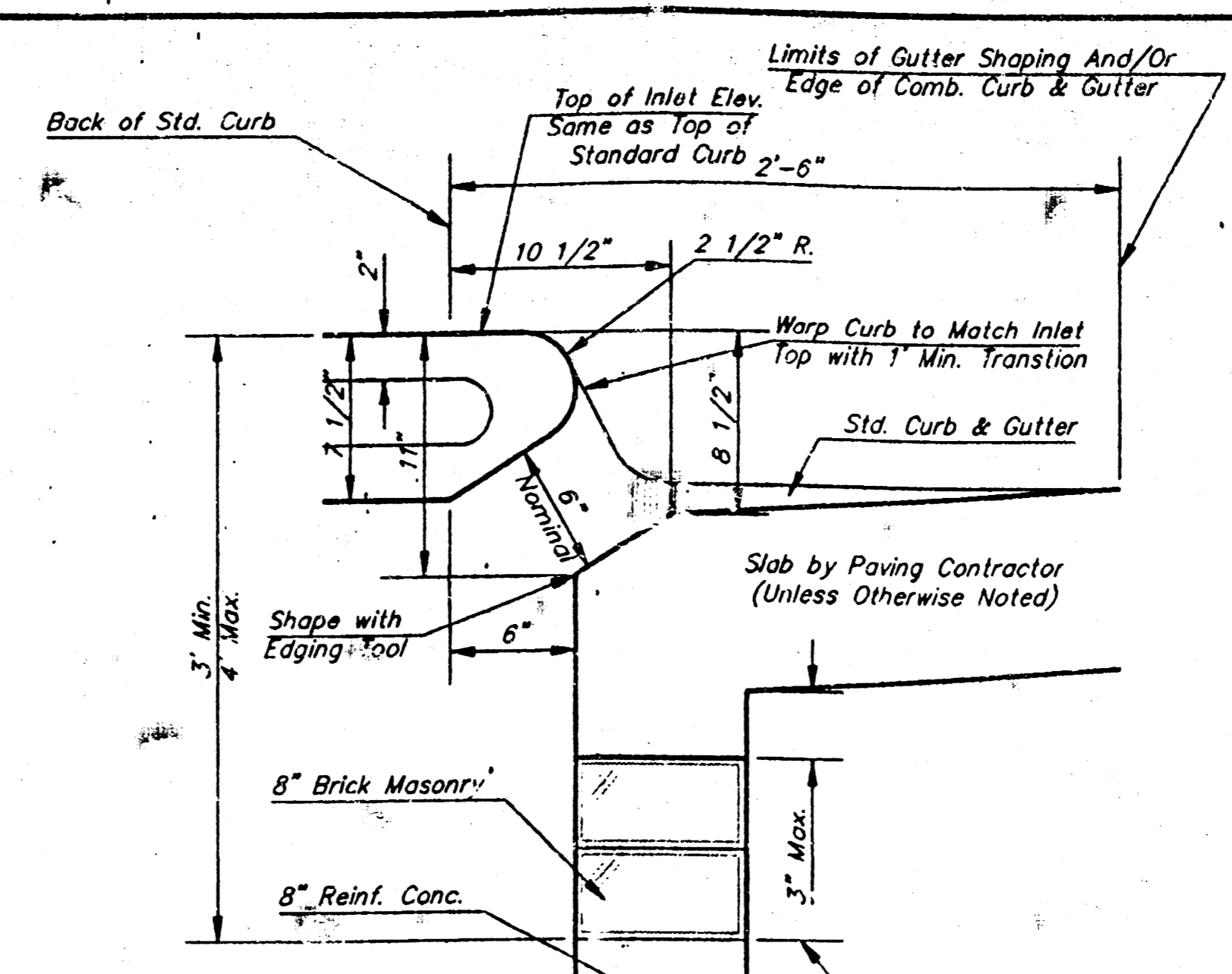
*Left Side Shown Without Slab Reinforcing, Right Side Shown With Slab Reinforcing



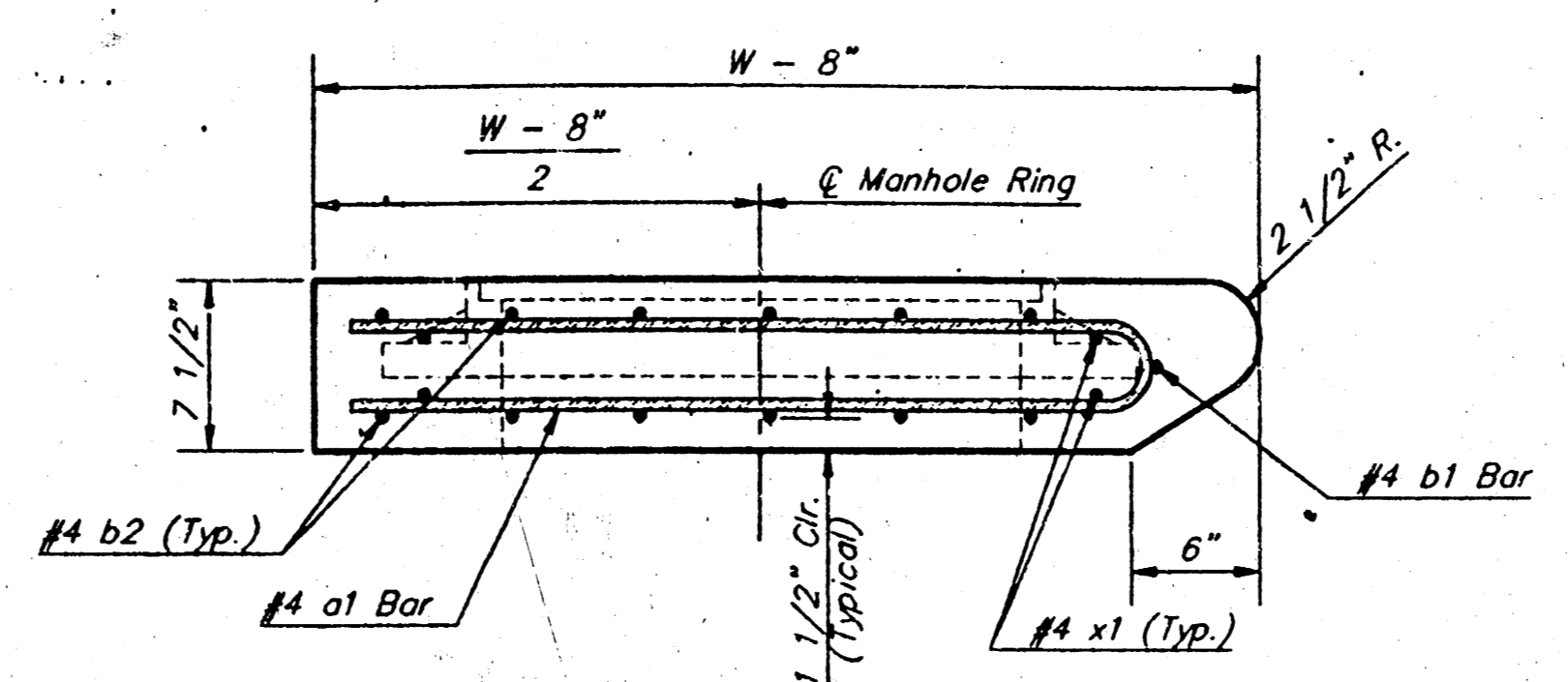
ELEVATION



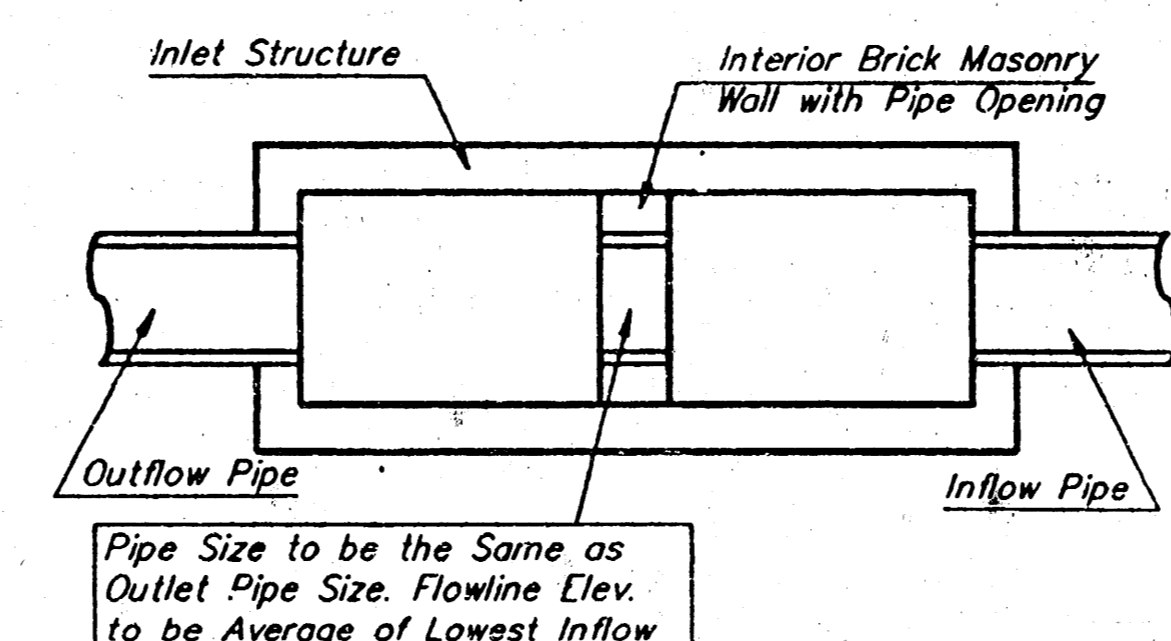
SECTION B-B



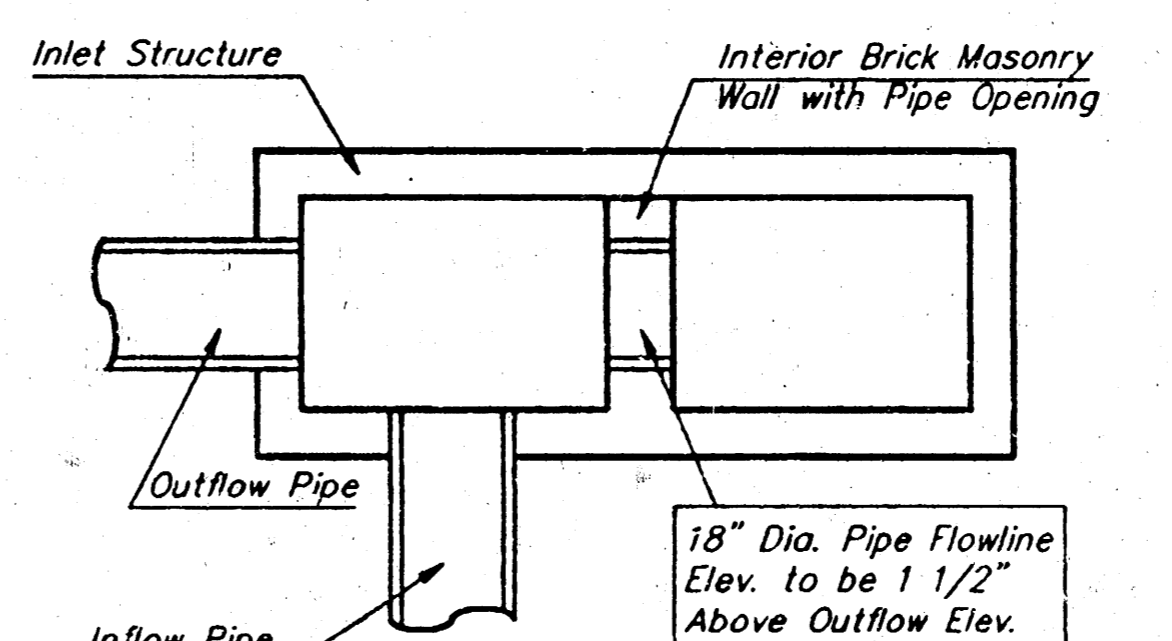
SECTION C-C



SECTION A-A

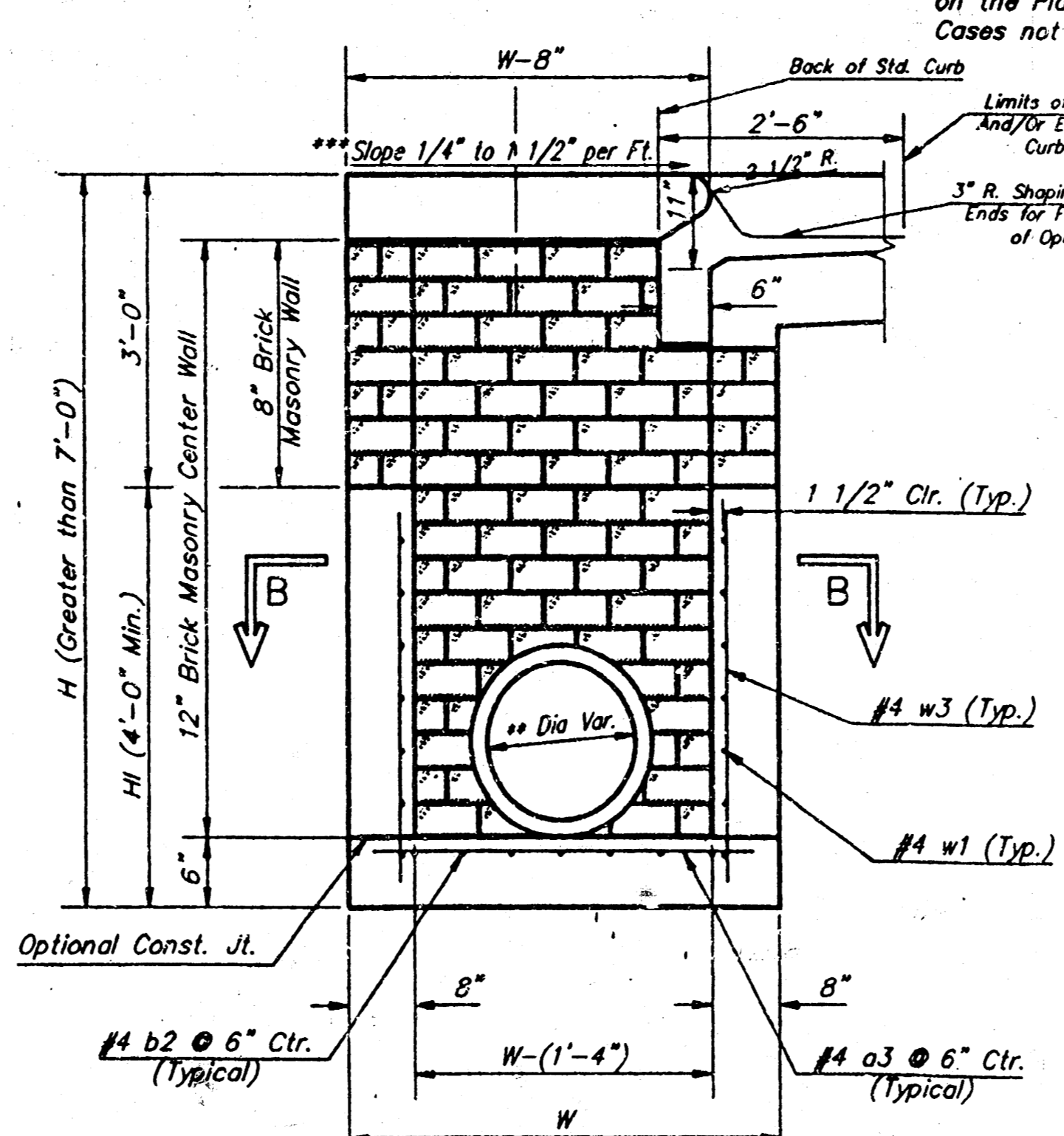


CASE I

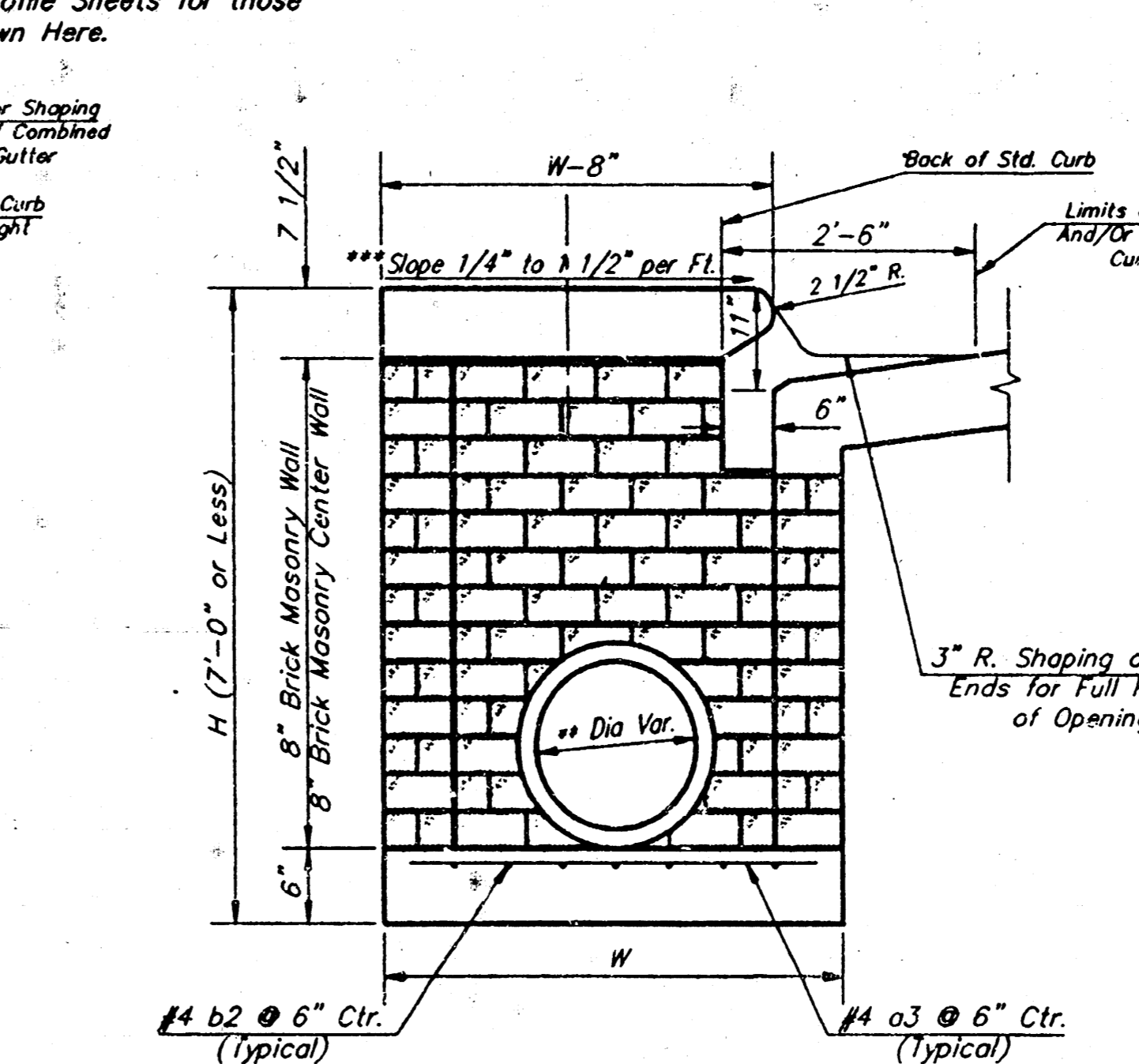


CASE II

NOTE:
Center Wall Pipe Size shall be as Specified in Inlet Construction Notes on the Plan/Profile Sheets for those Cases not Shown Here.



TYPICAL INLET SECTION AT CENTER WALL (Reinforced Concrete Walls)



TYPICAL INLET SECTION AT CENTER WALL (Masonry Walls)

NOTES:
** A center wall opening shall be provided by means of a section of reinforced concrete pipe. See Case I and Case II above.
*** Slope of inlet tops to match sidewalk of parking slopes within limits indicated.

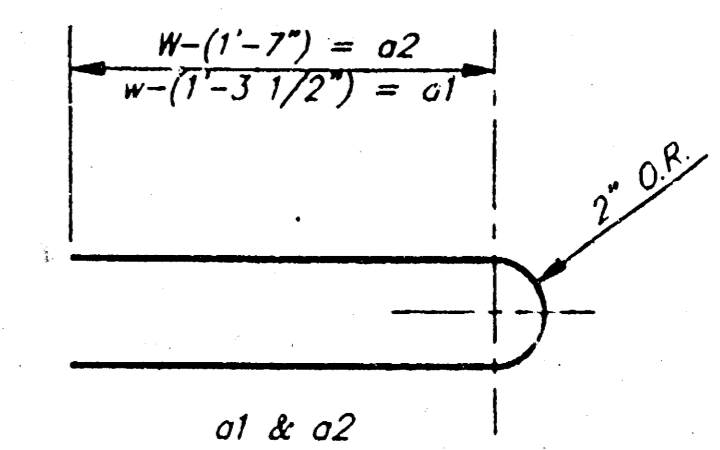
| PRECAST SLAB AND FLOOR REINFORCING | | | | | | | | | | | |
|------------------------------------|------|-----------|--------|-----------|--------|-----------|--------|-----------|--------|-----------|--------|
| MARK | SIZE | W = 4'-4" | | W = 5'-4" | | W = 6'-4" | | W = 7'-4" | | W = 8'-4" | |
| | | NO. | LENGTH | NO. | LENGTH | NO. | LENGTH | NO. | LENGTH | NO. | LENGTH |
| a1 | #4 | 13 | 6'-7" | 13 | 8'-2" | 13 | 10'-7" | 13 | 12'-7" | 13 | 14'-7" |
| a2 | #4 | 4 | 6'-0" | 4 | 8'-0" | 4 | 10'-0" | 4 | 12'-0" | 4 | 14'-0" |
| a3 | #4 | 23 | 4'-1" | 23 | 5'-1" | 23 | 6'-1" | 23 | 7'-1" | 23 | 8'-1" |
| b1 | #4 | 1 | 9'-9" | 1 | 5'-9" | 1 | 9'-9" | 1 | 9'-9" | 1 | 9'-9" |
| b2 | #4 | 23 | 11'-1" | 29 | 11'-1" | 35 | 11'-1" | 41 | 11'-1" | 47 | 11'-1" |
| w1 | #4 | 16 | 3'-10" | 16 | 4'-2" | 16 | 4'-6" | 16 | 4'-10" | 16 | 5'-2" |

| WALL REINFORCING | | | | | | | | | | | |
|------------------|------|-----------|--------|-----------|--------|-----------|--------|-----------|--------|-----------|--------|
| MARK | SIZE | W = 4'-4" | | W = 5'-4" | | W = 6'-4" | | W = 7'-4" | | W = 8'-4" | |
| | | NO. | LENGTH | NO. | LENGTH | NO. | LENGTH | NO. | LENGTH | NO. | LENGTH |
| w1 | #4 | 1 | 11'-1" | 1 | 11'-1" | 1 | 11'-1" | 1 | 11'-1" | 1 | 11'-1" |
| w2 | #4 | 1 | 4'-1" | 1 | 5'-1" | 1 | 6'-1" | 1 | 7'-1" | 1 | 8'-1" |
| w3 | #4 | 52 | 2 | 56 | 2 | 60 | 2 | 64 | 2 | 68 | 2 |

* Field Bend or Cut Reinforcing as Required for Clearance.
① 4 (H1 - 12") (H1 - 21") Rounded down to nearest 0.5"
② H1 - 3"

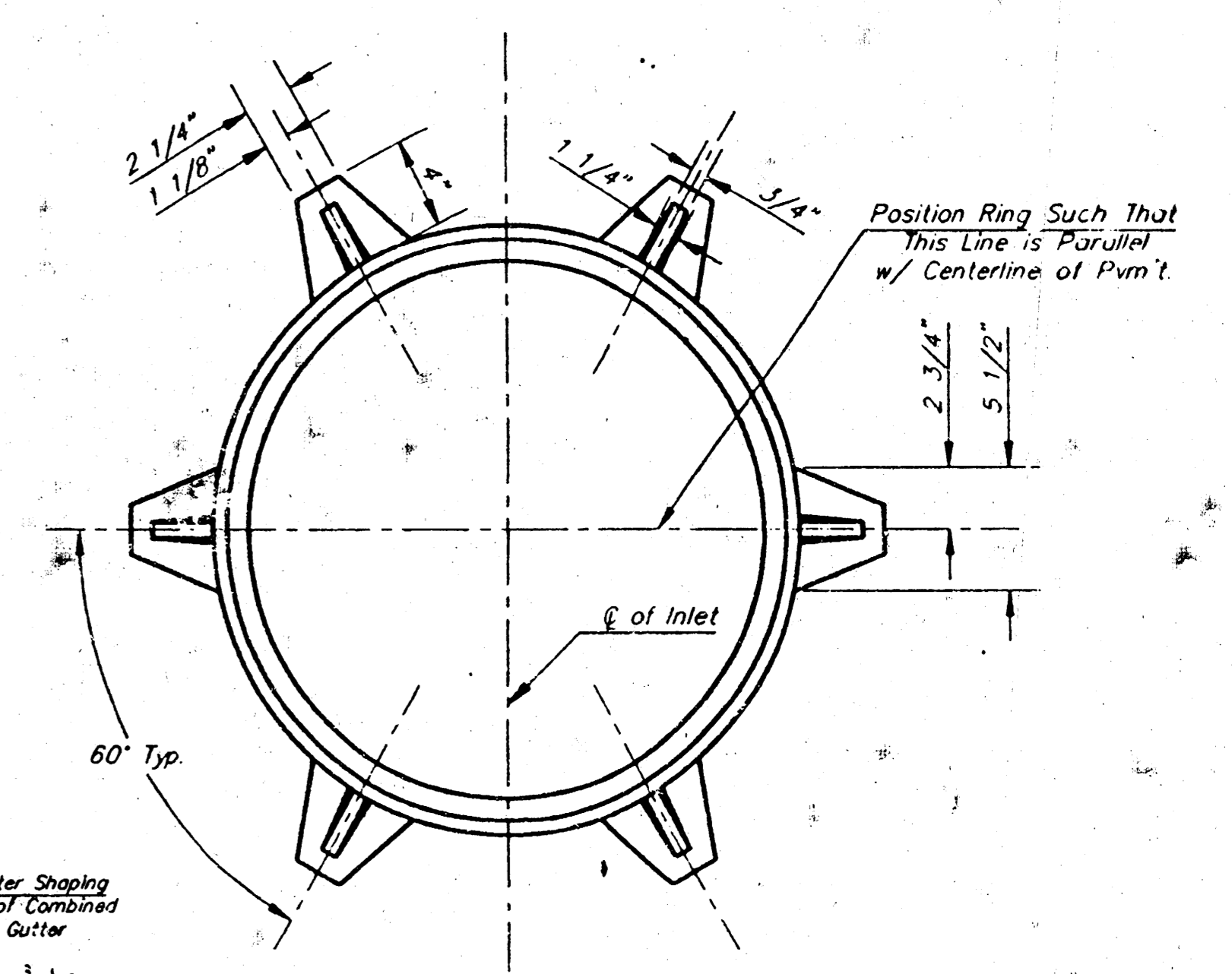
GENERAL NOTES:

- The contractor shall be required to construct 8" brick masonry walls between the concrete inlet base and top on this inlet when W=6'-4" or less and H=7'-0" or less. When W is greater than 6'-4" and H is less than 7'-0" the outside inlet walls below the brick stack shall be reinforced concrete construction and the center wall shall be of masonry construction as shown for the masonry wall option.
- Inlet invert shall be shaped with 8 sack sand mix concrete to create flow channels and to increase hydraulic efficiency such that the inlet will be self cleaning between all inlet and/or outlet pipes.
- Concrete tops to be installed on thin mortar cushion to insure full support along brick walls. Concrete tops may be cast in place or precast. Concrete used for inlet construction shall be concrete pavement mix.
- Inlet top reinforcing shall be spaced on 8" max. centers. Inlet lids shall be notched out as indicated to facilitate construction of curb. Bars in inlet top to be field bent or cut to clear manhole ring.
- The ends of all pipes installed in inlets shall be cut off flush with the inside face of the inlet wall.



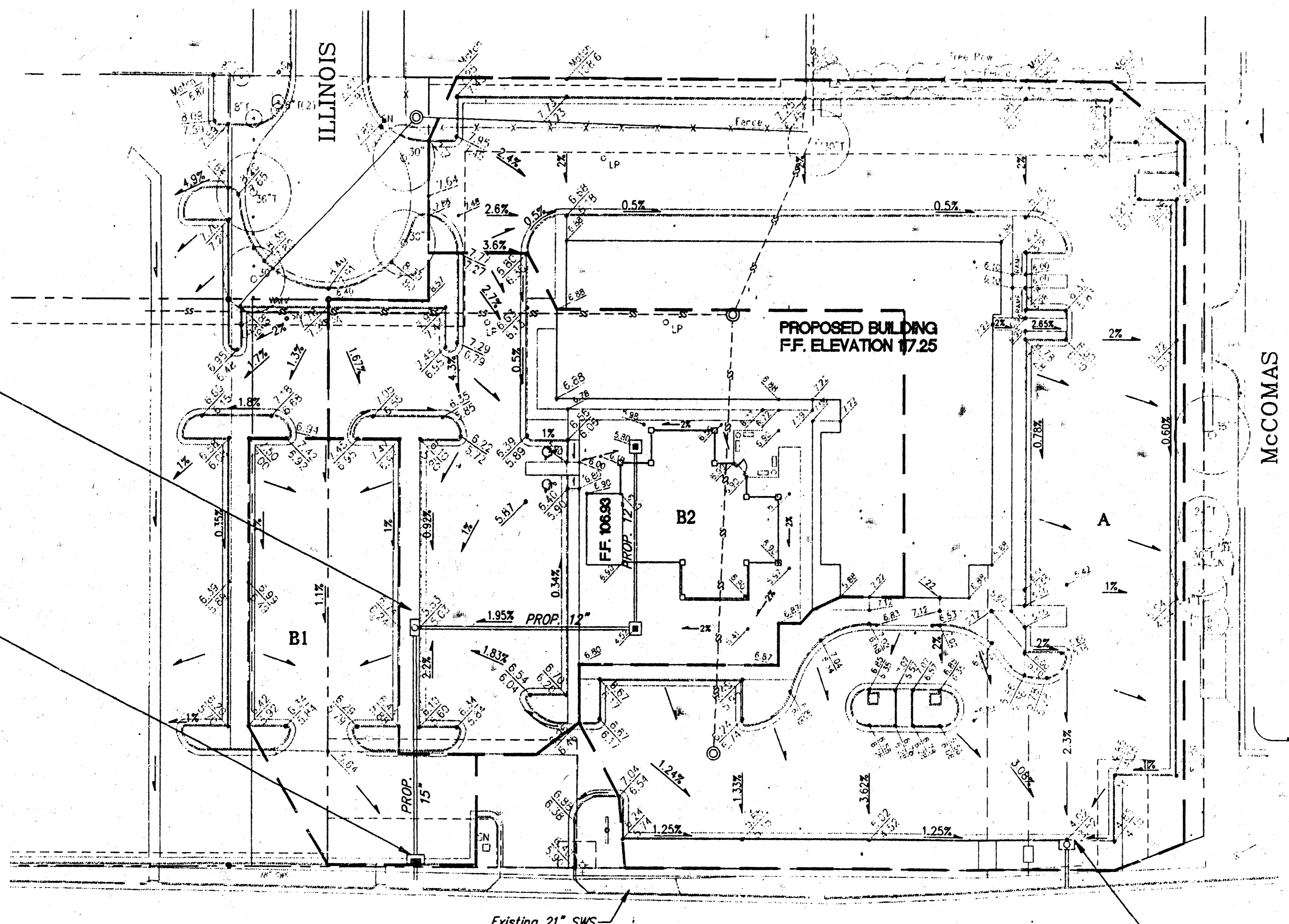
BENDING DIAGRAM

| STANDARD CURB INLET PRECAST TOPS | | | | |
|----------------------------------|---------------------|---------------|---------------|--|
| W | PRE-CAST TOP SIZE | PIPE SIZE | CU. YD. CONC. | |
| 4'-4" | 3'-8" 11'-4" 7 1/2" | 21" & SMALLER | 0.83± | |
| 5'-4" | 4'-8" 11'-4" 7 1/2" | 24" & 30" | 1.09± | |
| 6'-4" | 5'-8" 11'-4" 7 1/2" | 36" & 42" | 1.35± | |
| 7'-4" | 6'-8" 11'-4" 7 1/2" | 48" & 54" | 1.61± | |
| 8'-4" | 7'-8" 11'-4" 7 1/2" | 60" & 66" | 1.92± | |



MANHOLE RING AND COVER
Weight = 180 lbs.

* See City of Wichita Standard Manhole Ring and Cover Detail Sheet for Cover Details to be Used with Inlet Frame.



AREA B2
 D.A. = 0.71 Ac.
 $Q_5 = 3.07$ cfs
 $Q_{100} = 5.12$ cfs

AREA B1
 D.A. = 0.23 Ac.
 $Q_5 = 1.00$ cfs
 $Q_{100} = 1.66$ cfs

AREA B TOTALS
 D.A. = 0.94 Ac.
 $Q_5 = 4.07$ cfs
 $Q_{100} = 6.78$ cfs

AREA A
 D.A. = 1.35 Ac.
 $Q_5 = 5.84$ cfs
 $Q_{100} = 9.75$ cfs

SRB
 SCALE:
 1"=30'-0"

BENCH MARK

1. Square cut on midpoint of high edge of curb returns NE cor. McComas and Frontage Road. Elev. 112.95 City Datum

DRAINAGE CALCULATIONS

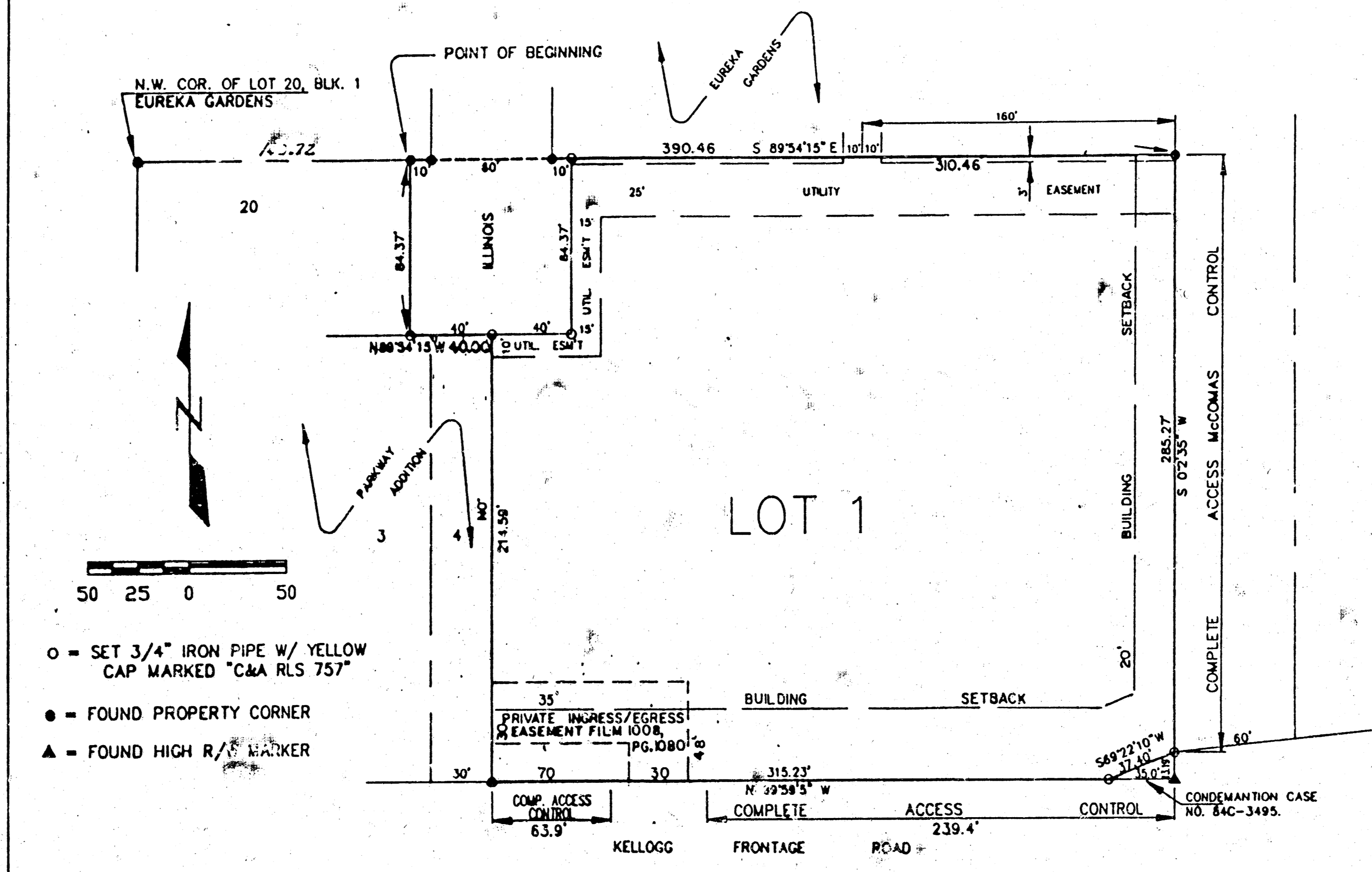
PEAK RUNOFF RATES BY RATIONAL METHOD FOR 5-YEAR AND 100-YEAR FREQUENCIES. ($Q = C \times I \times A$).
 TIME OF CONCENTRATION = 15 MINUTES
 $C_5 = 0.95$ $C_{100} = 0.98$
 $I_5 = 4.56$ in./hr. $I_{100} = 7.37$ in./hr.
 THESE VALUES USED FOR ALL AREAS:
 $Q_5 = 4.33$ cfs/acre
 $Q_{100} = 7.22$ cfs/acre

TOTAL AREA OF LOT 1, BONANZA ADD'N = 2.09 Acres
 IMPERVIOUS AREA = 96.7%
 PERVIOUS AREA = 3.3%
 SITE INCLUDES 0.20 Ac. WEST OF AND ADJACENT TO LOT 1.

U.S. 54 (KELLOGG) FRONTAGE ROAD

| | | | | | |
|---|------------------|---|-----------------------|------------------------------|-----------------------|
| DRAINAGE PLAN LOT 1 - BONANZA ADDITION WICHITA, KANSAS | | | | | |
| SRB | | 924 NORTH MAIN WICHITA, KANSAS 67203 | | 316-264-8008 FAX 264-4621 | |
| SAVOY, RUGGLES & BOHM, P.A. ENGINEERING & SURVEYING | | | | | |
| PROJECT NUMBER 496 PPS (607861) | | | | | |
| DRAWN J. Long | DESIGN T.C.R. | REVIEW | DATE Sept. 6, 1994 | UTILITY T.C.R. | SRU JOB 150E |
| | | | | | SHEET 5 OF 6 |

BONANZA ADDITION WICHITA, SEDGWICK COUNTY, KANSAS



- - SET 3/4" IRON PIPE W/ YELLOW CAP MARKED "C&A RLS 757"
- - FOUND PROPERTY CORNER
- ▲ - FOUND HIGH R/W MARKER

ENTERED ON TRANSFER RECORD THIS _____ DAY OF _____ 1994.
 SUSAN CROCKETT-SPOON COUNTY CLERK

STATE OF KANSAS }
 COUNTY OF SEDGWICK }
 THIS IS TO CERTIFY THAT THIS INSTRUMENT WAS FILED FOR RECORD IN THE REGISTER OF DEEDS OFFICE, AT _____ A.M.-P.M., ON THE _____ DAY OF _____, 1994.
 PAT KETTLER REGISTER OF DEEDS
 ED RESA DEPUTY

STATE OF KANSAS }
 COUNTY OF SEDGWICK }
 THIS PLAT APPROVED AND ALL DEDICATIONS SHOWN HEREON, IF ANY ACCEPTED BY THE CITY COUNCIL OF THE CITY OF WICHITA, KANSAS, THIS _____ DAY OF _____, 1994.
 (SEAL) *Elma Broadfoot* MAYOR
 (SEAL) *Pat Burnett* DEPUTY CITY CLERK
 STATE OF KANSAS }
 COUNTY OF SEDGWICK }
 THIS PLAT OF BONANZA ADDITION, WICHITA, SEDGWICK COUNTY, KANSAS, HAS BEEN SUBMITTED TO AND APPROVED BY THE WICHITA-SEDGWICK COUNTY METROPOLITAN AREA PLANNING COMMISSION, WICHITA, KANSAS.
 DATED THIS 24th DAY OF March, 1994.
 (SEAL) *James O. Miner* CHAIRMAN
 (SEAL) *Warren Krout* SECRETARY

I, RAYMOND M. HUBBELL, THE UNDERSIGNED, REGISTERED LAND SURVEYOR OF THE STATE OF KANSAS, DO HEREBY CERTIFY THAT I CAUSED TO HAVE SURVEYED AND PLATTED BONANZA ADDITION, WICHITA, SEDGWICK COUNTY, KANSAS; DESCRIBED AS BEGINNING AT A POINT ON THE NORTH LINE OF LOT 20, BLOCK 1, EUREKA GARDENS TO SEDGWICK COUNTY, KANSAS (NOW IN WICHITA), SAID POINT BEING 140.72 FEET EAST OF THE NORTHWEST CORNER OF SAID LOT 20, BLOCK 1; THENCE SOUTH, PARALLEL WITH THE EAST LINE OF SAID LOT 20, BLOCK 1, TO A POINT ON THE NORTH LINE OF PARKWAY ADDITION TO WICHITA, KANSAS; THENCE EAST ALONG SAID NORTH LINE A DISTANCE OF 40 FEET; THENCE SOUTH PARALLEL WITH AND 30 FEET EAST OF THE WEST LINE OF LOT 4 OF SAID PARKWAY ADDITION TO THE SOUTH LINE OF SAID LOT 4; THENCE EAST ALONG THE SOUTH LINES OF LOTS 4, 5, AND VACATED ALLEY OF SAID PARKWAY ADDITION AND THE SOUTH LINE OF LOT 23, BLOCK 2 OF SAID EUREKA GARDENS TO A POINT 35 FEET WEST OF THE EAST LINE OF SAID LOT 23, BLOCK 2; THENCE NORTHEASTERLY TO A POINT ON THE EAST LINE OF SAID LOT 23 AND 13.19 FEET NORTH OF THE SOUTHEAST CORNER OF SAID LOT 23; THENCE NORTH ALONG THE EAST LINE OF SAID BLOCK 2 TO THE NORTHEAST CORNER OF LOT 20, BLOCK 2 OF SAID EUREKA GARDENS; THENCE WEST ALONG THE NORTH LINES AND EXTENDED NORTH LINES OF LOT 20 AND LOT 10, SAID BLOCK 2 TO THE POINT OF BEGINNING, ALL LYING IN SEDGWICK COUNTY, KANSAS.
 DATE SIGNED April 8 1994.
 (SEAL) *Raymond M. Hubbell*
 RAYMOND M. HUBBELL

KNOW ALL MEN BY THESE PRESENTS, THAT WE, THE UNDERSIGNED, OWNERS OF THE LAND DESCRIBED IN THE SURVEYOR'S CERTIFICATE TO BE PLATTED INTO A LOT AND STREET TO BE KNOWN AS BONANZA ADDITION, WICHITA, SEDGWICK COUNTY, KANSAS, THE UTILITY EASEMENTS AS INDICATED ARE HEREBY GRANTED TO THE PUBLIC FOR CONSTRUCTION AND MAINTENANCE OF ALL PUBLIC UTILITIES, AND FOR DRAINAGE PURPOSES WITH RIGHTS OF INGRESS AND EGRESS, AND THE STREET IS HEREBY DEDICATED TO AND FOR USE OF THE PUBLIC. THE EASEMENTS AND THAT PART OF ILLINOIS AVENUE DEDICATED BY PREVIOUS PLATS ARE VACATED IN ACCORDANCE WITH KSA 12-512(b).
 ALL ABUTTERS' RIGHTS OF ACCESS TO AND FROM MCCOMAS, OVER AND ACROSS THE EAST LINE OF LOT 1; AND ALL ABUTTERS' RIGHTS OF ACCESS TO AND FROM KELLOGG FRONTAGE ROAD OVER AND ACROSS THE SOUTH LINE OF LOT 1, AS SHOWN ARE HEREBY GRANTED TO THE CITY OF WICHITA, PROVIDED, HOWEVER, THAT LOT 1 SHALL HAVE ACCESS TO KELLOGG FRONTAGE ROAD AT ONE LOCATION, AS SHOWN ON PLAT.

DATE SIGNED April 8 1994. BONANZA, INC.
Jack R. Hunt
 JACK R. HUNT, PRESIDENT

STATE OF KANSAS }
 COUNTY OF SEDGWICK }
 THIS INSTRUMENT WAS ACKNOWLEDGED BEFORE ME ON 8th DAY OF APRIL 1994, BY JACK R. HUNT, PRESIDENT, ON BEHALF OF BONANZA, INC.
 (SEAL) *Carol M. Palmer*
 CAROL M. PALMER NOTARY PUBLIC

MY APPOINTMENT EXPIRES April 27, 1996
 STATE OF KANSAS }
 COUNTY OF SEDGWICK }
 WE, SOUTHWEST NATIONAL BANK, HOLDERS OF A MORTGAGE ON THE ABOVE DESCRIBED PROPERTY DO HEREBY CONSENT TO THE PLAT OF BONANZA ADDITION, WICHITA, KANSAS

DATE SIGNED APRIL 8 1994. SOUTHWEST NATIONAL BANK
Robert Hoopes
 ROBERT HOOPES, PRESIDENT

STATE OF KANSAS }
 COUNTY OF SEDGWICK }
 THIS INSTRUMENT WAS ACKNOWLEDGED BEFORE ME ON 08 DAY OF APRIL 1994, BY ROBERT HOOPES, PRESIDENT, ON BEHALF OF SOUTHWEST NATIONAL BANK.
 (SEAL) *Maura Valandingham*
 MAURA VALANDINGHAM NOTARY PUBLIC

MY APPOINTMENT EXPIRES: OCTOBER 27, 1997