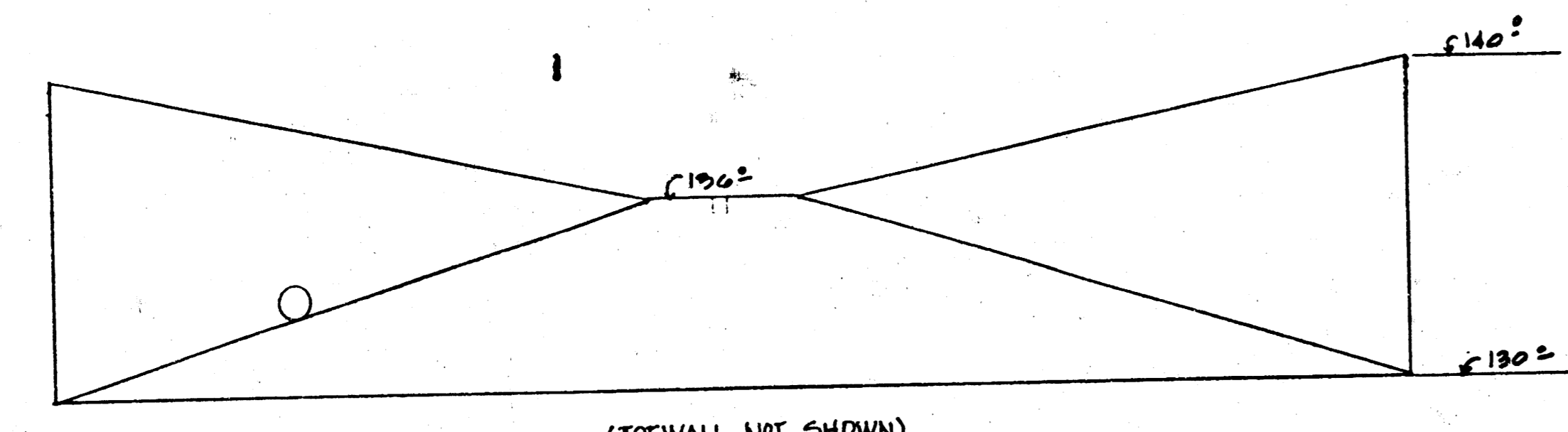
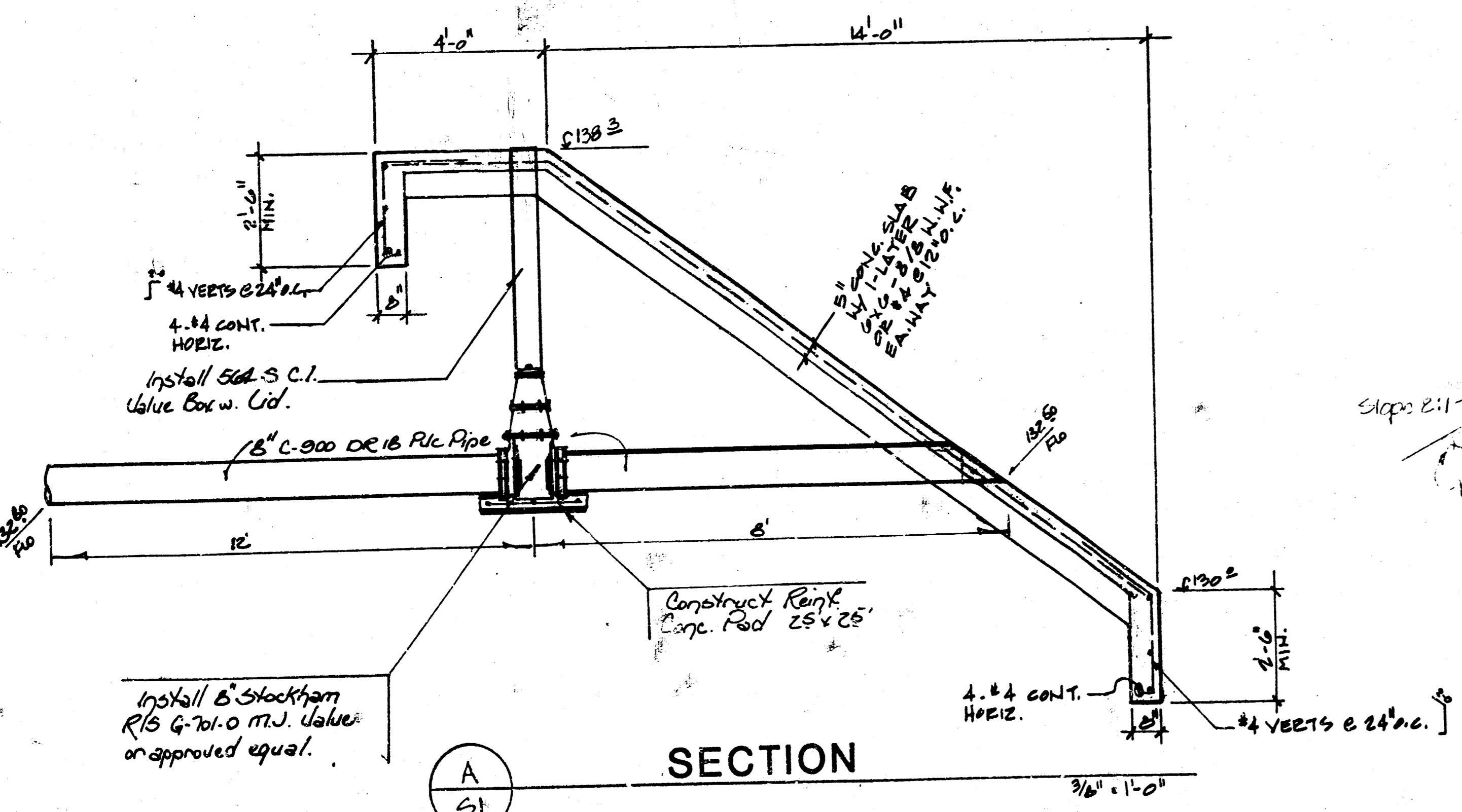


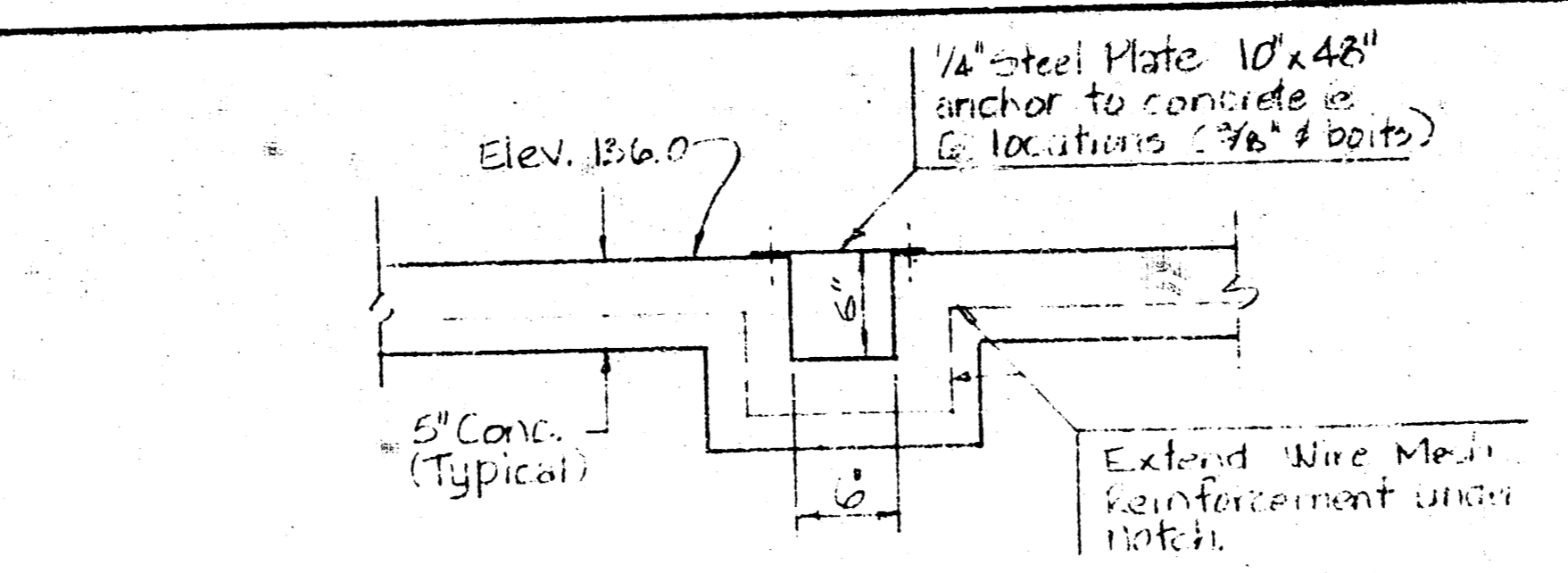
PLAN VIEW
3/16" = 1'-0"



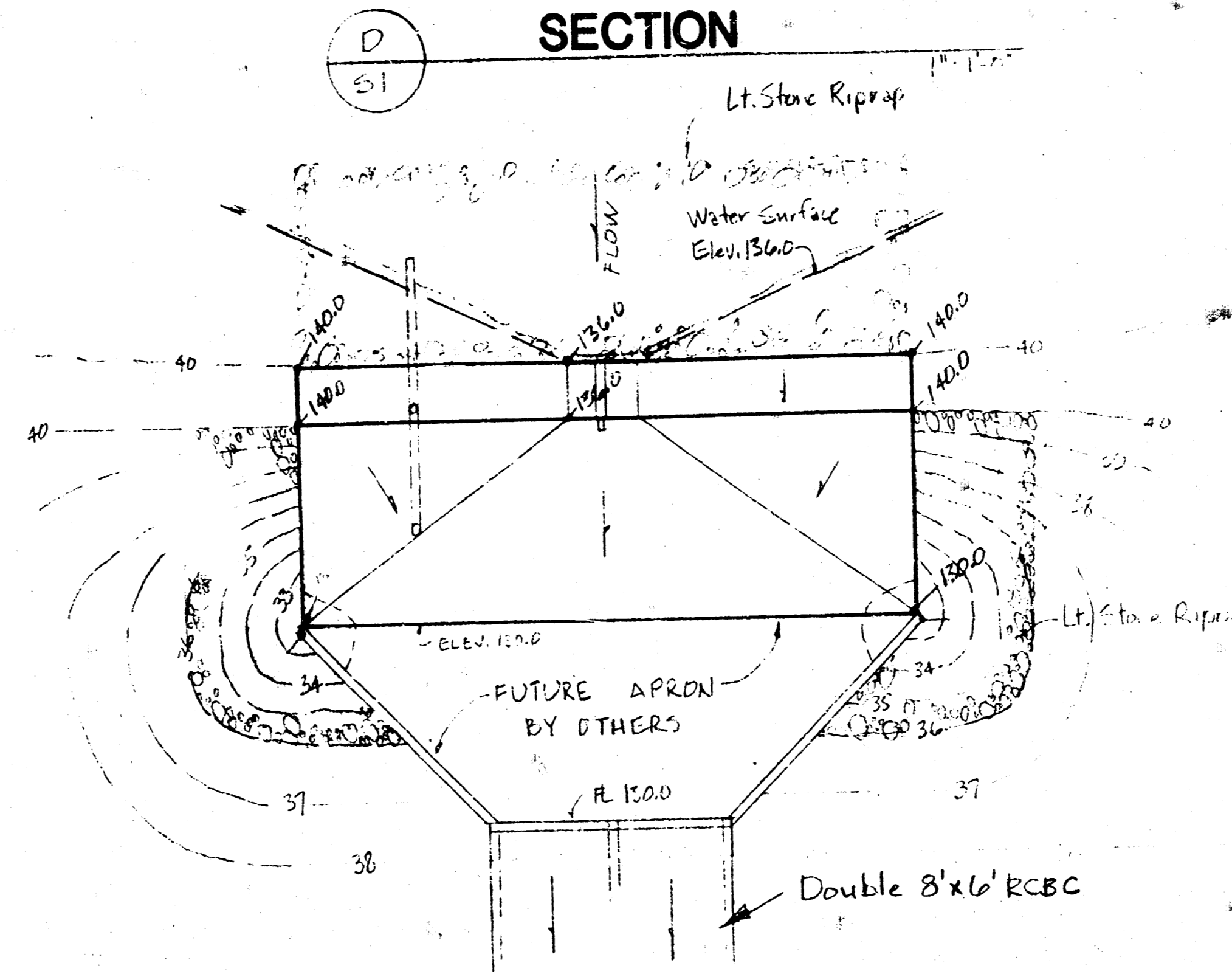
END VIEW
3/16" = 1'-0"



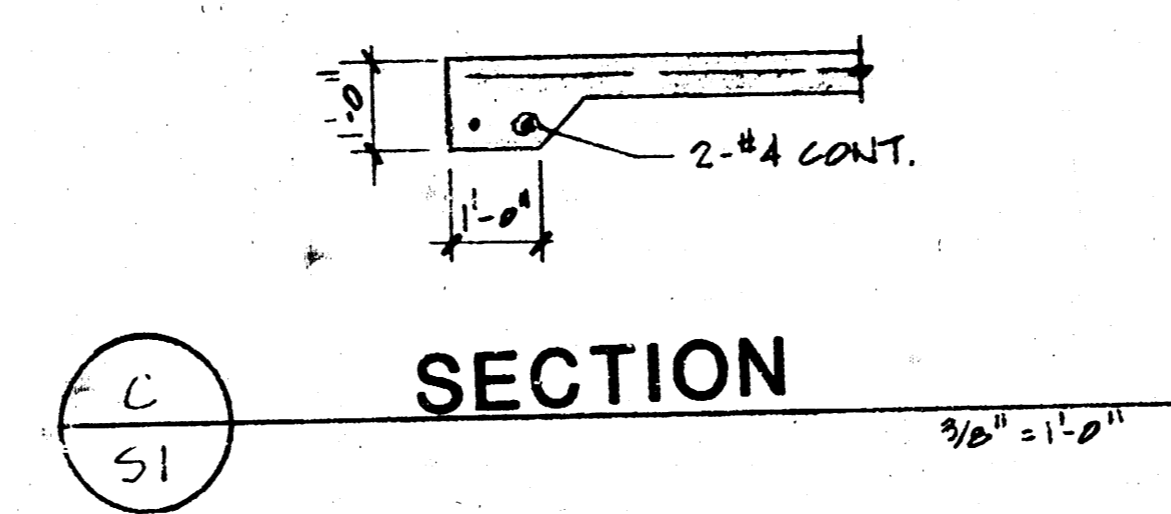
SECTION
3/16" = 1'-0"



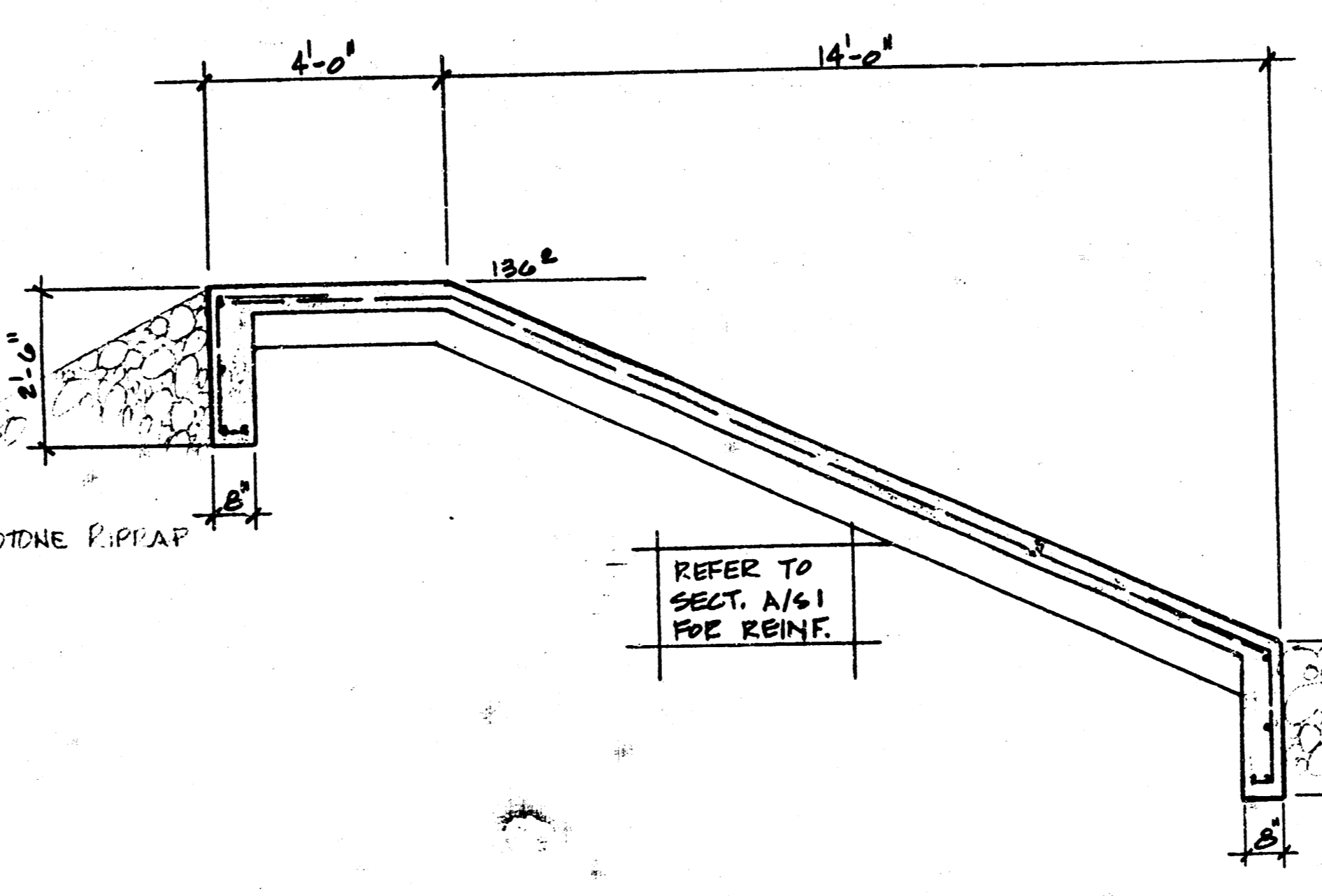
SECTION
3/16" = 1'-0"



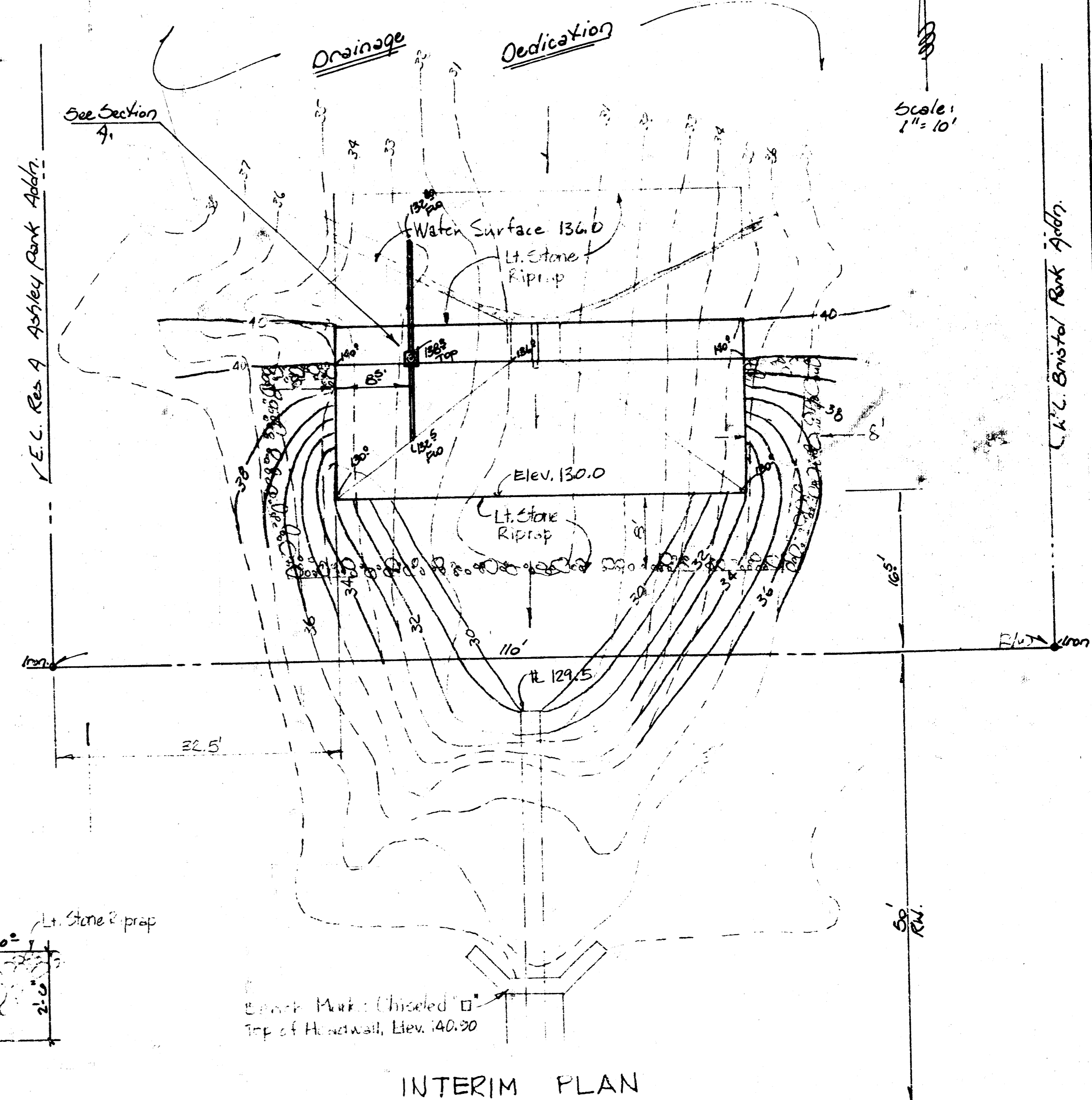
FUTURE PLAN



SECTION
3/16" = 1'-0"



SECTION
3/16" = 1'-0"



MAPLE
INTERIM PLAN

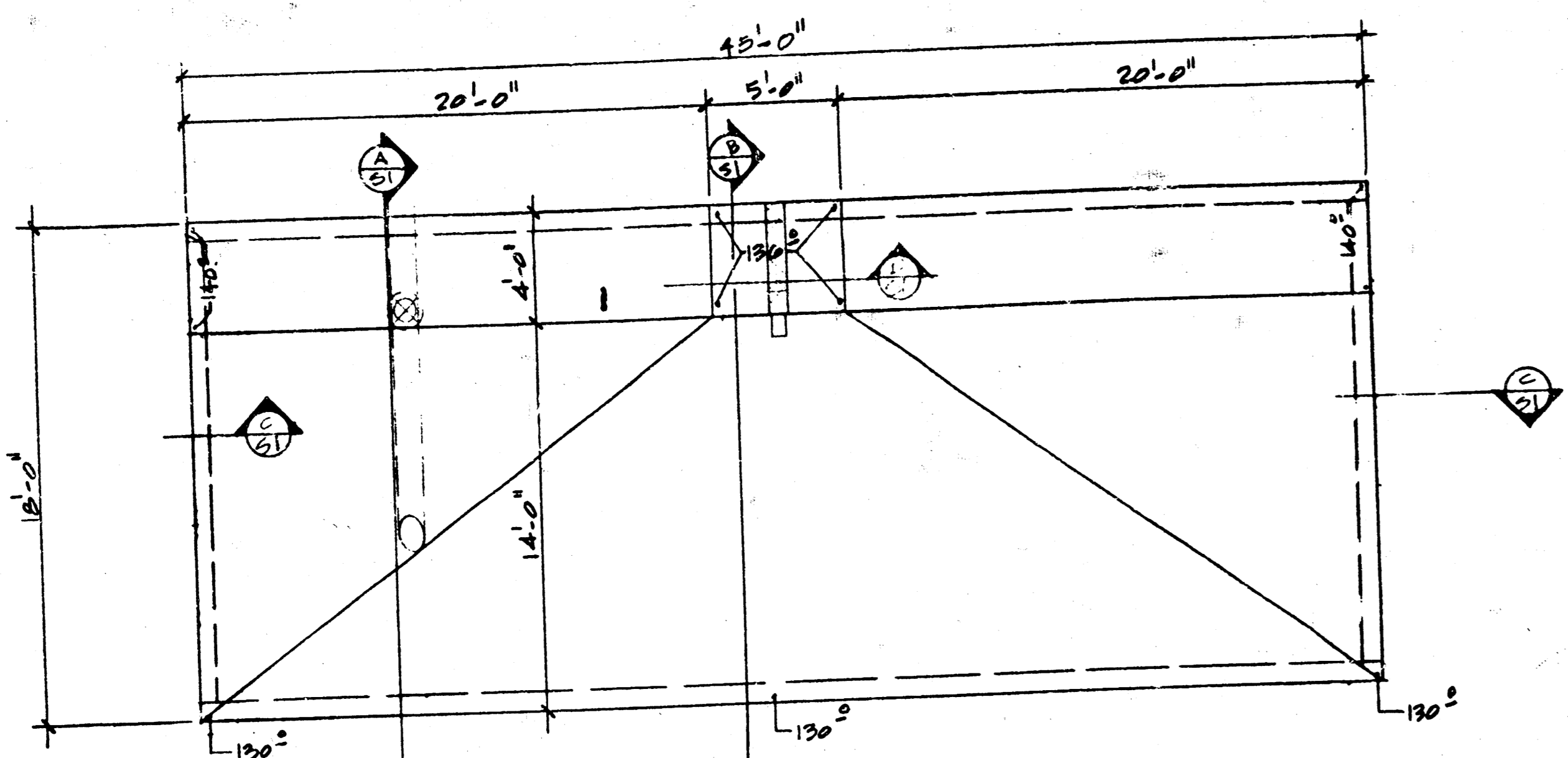
- STRUCTURAL GENERAL NOTES:**
1. ALL FOOTINGS SHALL BEAR ON A MINIMUM ALLOWABLE TOTAL LOAD SOIL BEARING PRESSURE OF 2,000 PSF.
 2. FOOTINGS CENTERED UNDER SUPPORTING MEMBERS. (TYPICAL UNLESS OTHERWISE NOTED).
 3. ALL CAST-IN-PLACE CONCRETE SHALL HAVE A MIN. COMPRESSIVE STRENGTH OF 3,000 PSI @ 28 DAYS. (TYPICAL UNLESS NOTED).
 4. NO ALUMINUM CONDUIT SHALL BE IMBEDDED IN ANY CONCRETE.
 5. CONCRETE PROTECTION FOR REINFORCEMENT SHALL BE 3/4" FOR SLABS, 1 1/2" CLEAR FOR BEAMS, & COLUMNS, 2" CLEAR FOR FORMED EXPOSED SURFACES AND 3" CLEAR FOR FOOTINGS (TYPICAL UNLESS OTHERWISE NOTED).
 6. ALL REINFORCING BARS #3, #4 AND #5 SHALL MEET ASTM A615 GRADE 40.
 7. REINFORCING BAR QUANTITIES SHOWN ARE FOR ESTIMATING PURPOSES ONLY.
 8. PROVIDE #5 X 40-0 AND 4-14 X 40-0 MARK EX. EXTRA BARS FOR USE AS DIRECTED.
 9. REINFORCEMENT SHALL BE CONTINUOUS & LAPPED 30 BAR DIAMETERS (2"-0" MIN.), EXCEPT AS NOTED & PROVIDE CORNER BARS OF SAME SIZE AND SPACING.
 10. REINFORCEMENT SHALL BE DETAILED IN ACCORDANCE WITH THE LATEST A.C.I. DETAILING MANUAL.
 11. CHAMFER ALL EXPOSED CONCRETE CORNERS OF WALLS.
 12. SLABS ON GRADE SHALL BE 4" THICK W/6X6 - 10/10 MESH UNLESS OTHERWISE NOTED.
 13. ALL MESH SHALL MEET ASTM A-185; LAP A MIN. OF 6".
 14. ALL PRECAST/PRESTRESSED CONCRETE MEMBERS, FRAMING & CONNECTIONS SHALL CONFORM TO THE LATEST PCI & ACI SPECIFICATIONS.
 15. THE PRESTRESS/PRECAST MFR. SHALL FURNISH SHOP DRAWINGS ALONG WITH SUPPORTING CALCULATIONS FOR APPROVAL BY ENGINEER BEFORE FABRICATION.
 16. ALL PRECAST/PRESTRESSED CONCRETE SHALL BE NORMAL WEIGHT (150PCF) WITH A MIN. COMPRESSIVE STRENGTH OF 5,000 PSI @ 28 DAYS; COMPRESSIVE STRENGTH @ INITIAL PRESTRESS RELEASE SHALL BE 3,500 PSI.
 17. NON-SHRINK GROUT WHERE INDICATED ON PLANS SHALL BE NON-METALLIC WITH A MIN. COMPRESSIVE OF 5,000 PSI @ 28 DAYS. (FIVE STAR GROUT BY U.S. GROUT CORP. OR APPROVED EQUAL).
 18. WELDING SHALL CONFORM TO A.W.S. SPECIFICATIONS. ALL WELDING TO BE BY CERTIFIED WELDERS.
 19. NO AREA OF THE STRUCTURE SHALL BE LOADED WITH CONSTRUCTION MATERIALS OR EQUIPMENT THAT EXCEEDS FINAL DESIGN CRITERIA.
 20. TEMPORARY BRACING & SHORING AGAINST WIND & ERECTION CONDITIONS TO BE THE RESPONSIBILITY OF THE GENERAL CONTRACTOR.
 21. CONTRACTOR TO VERIFY ALL DIMENSIONS AND ELEVATIONS WITH EXISTING CONDITIONS.

NOTE TO CONTRACTOR
INSPECTION AND TESTING FOR THIS PROJECT IS TO BE PROVIDED BY A LICENSED CONSULTING ENGINEERING FIRM IN ACCORDANCE WITH THE CITY OF WICHITA ENGINEERING PRACTICES. THE CONSULTING ENGINEER IS NOT RESPONSIBLE FOR ANY WORK BEING COMMENCED IN VIOLATION OF ANY CITY ORDINANCES OR WITHOUT WRITTEN PERMISSION FROM THE CITY ENGINEER.

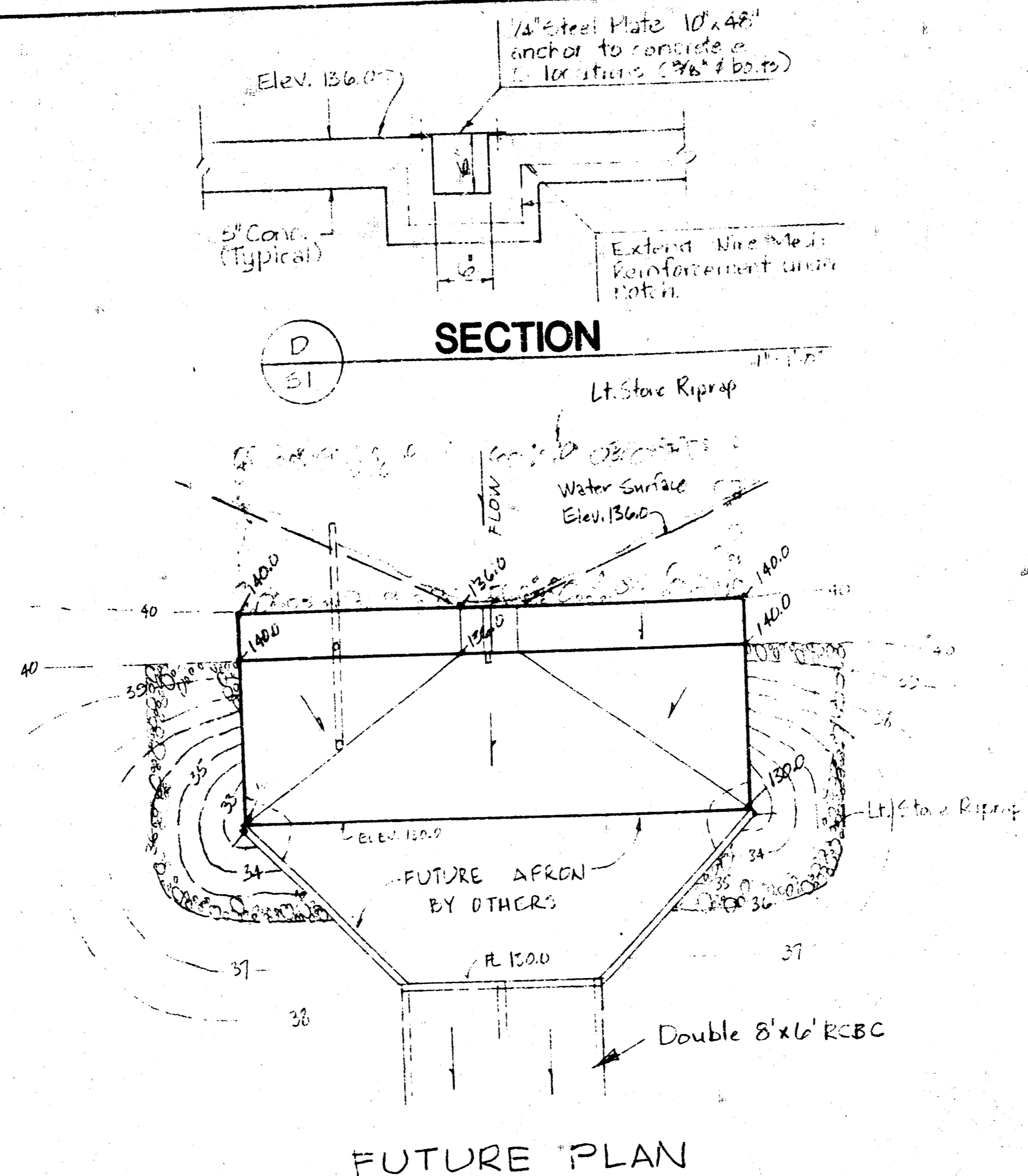
APPROVED AS NOTED
By CITY ENGINEER OF WICHITA

Sanitary Engineer
Storm Engineer: R.H. 4/12/29
Utility Engineer
Water Master

**PRIVATE STORM WATER WEIR
BRISTOL PARK ADDITION
CITY OF WICHITA, KS**

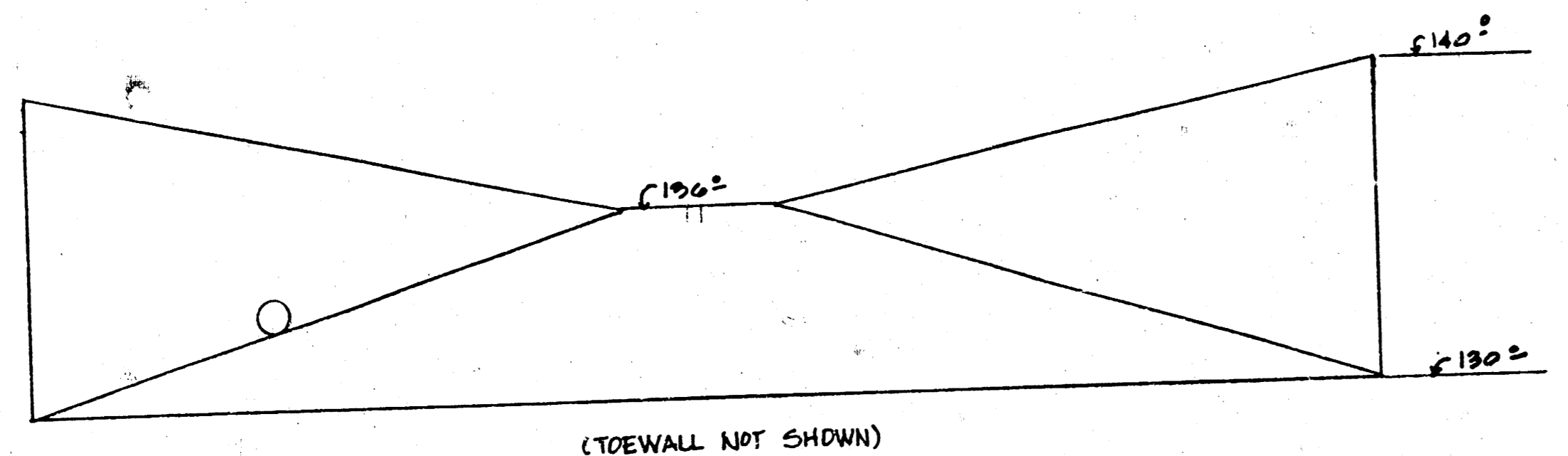


PLAN VIEW

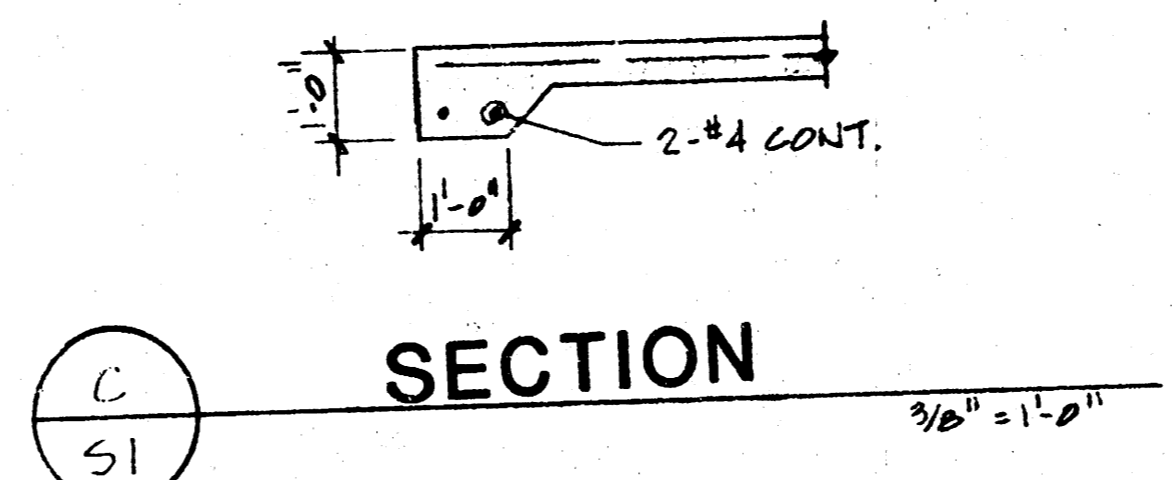


SECTION

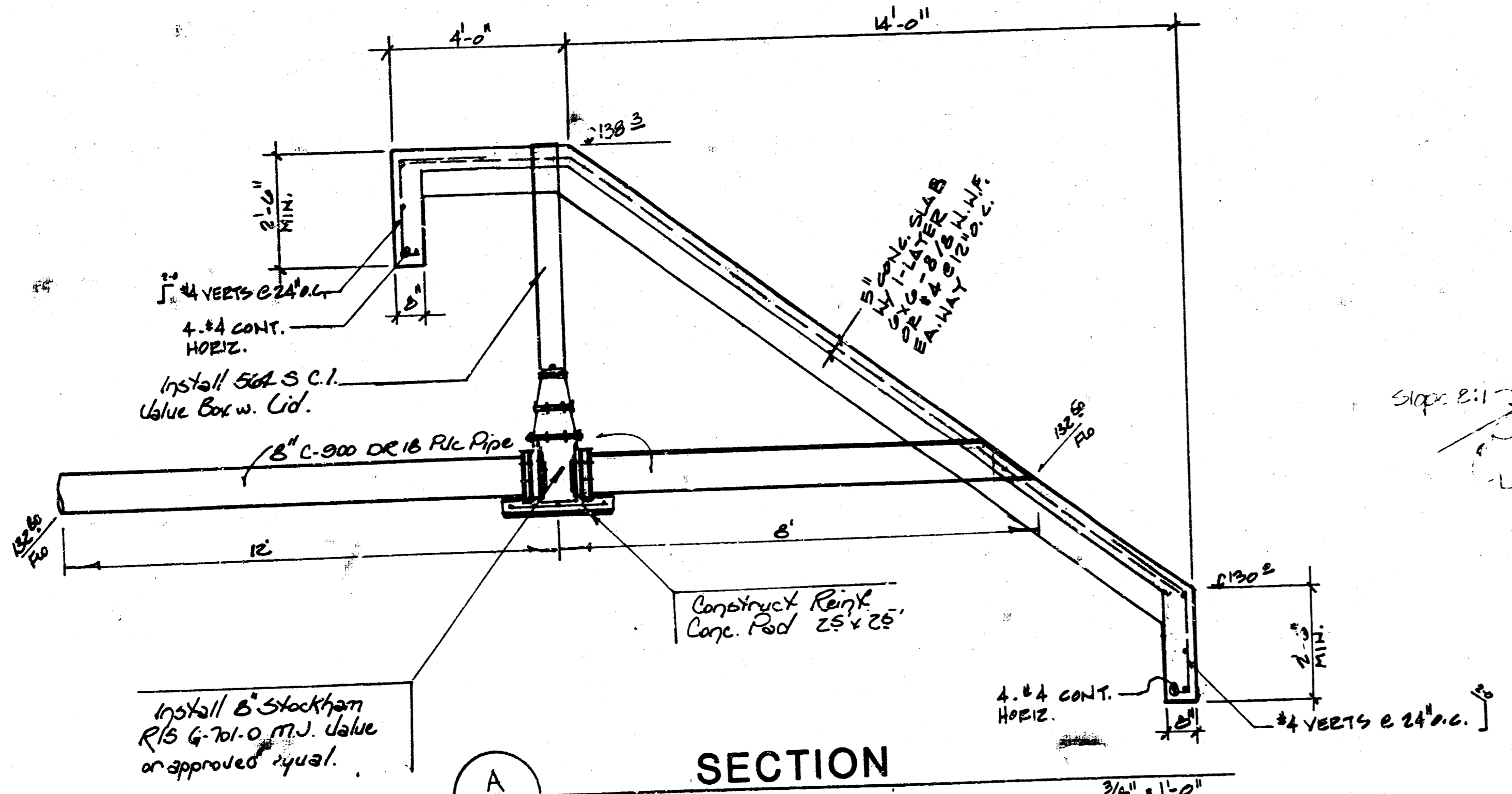
FUTURE PLAN



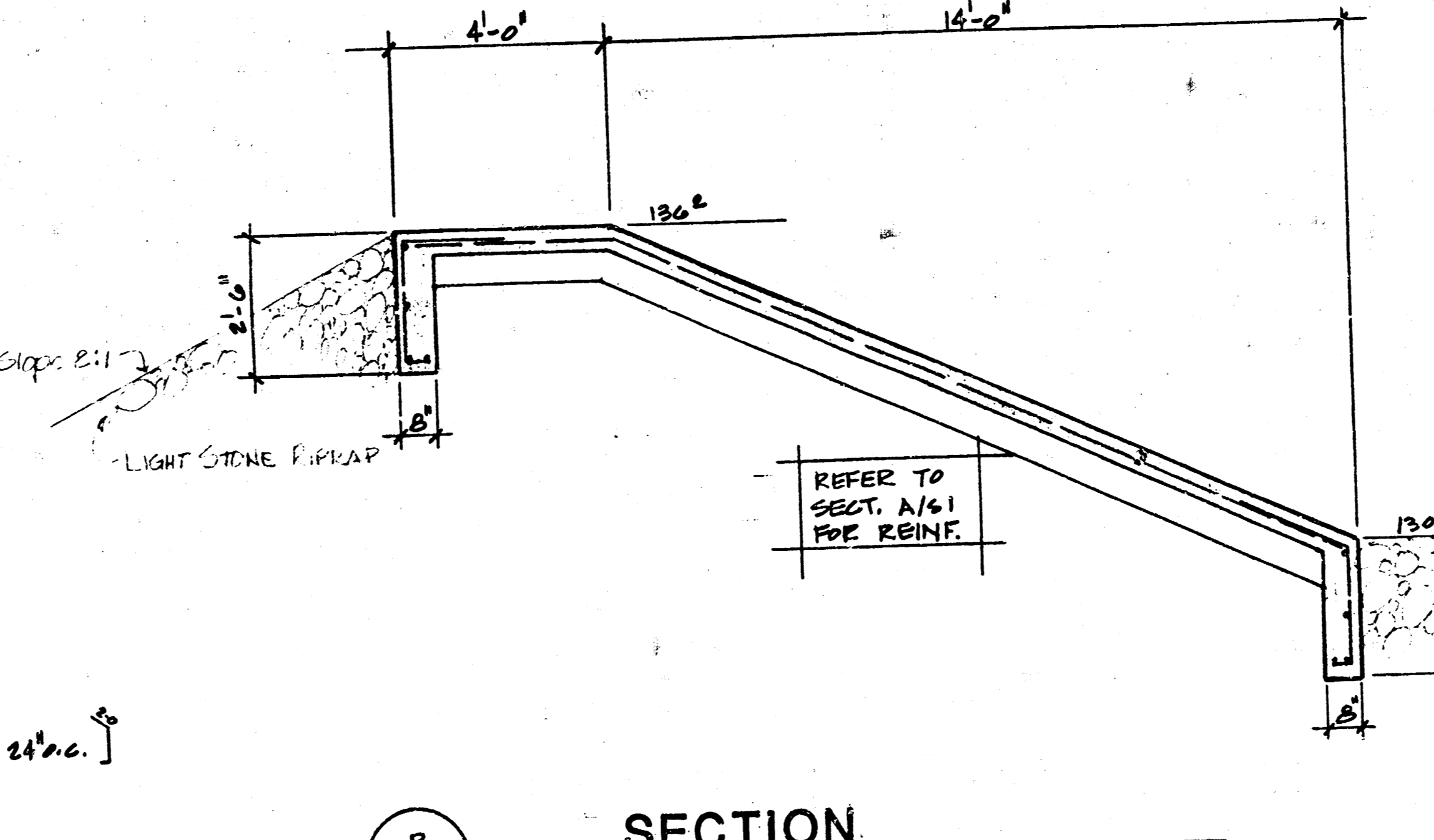
END VIEW



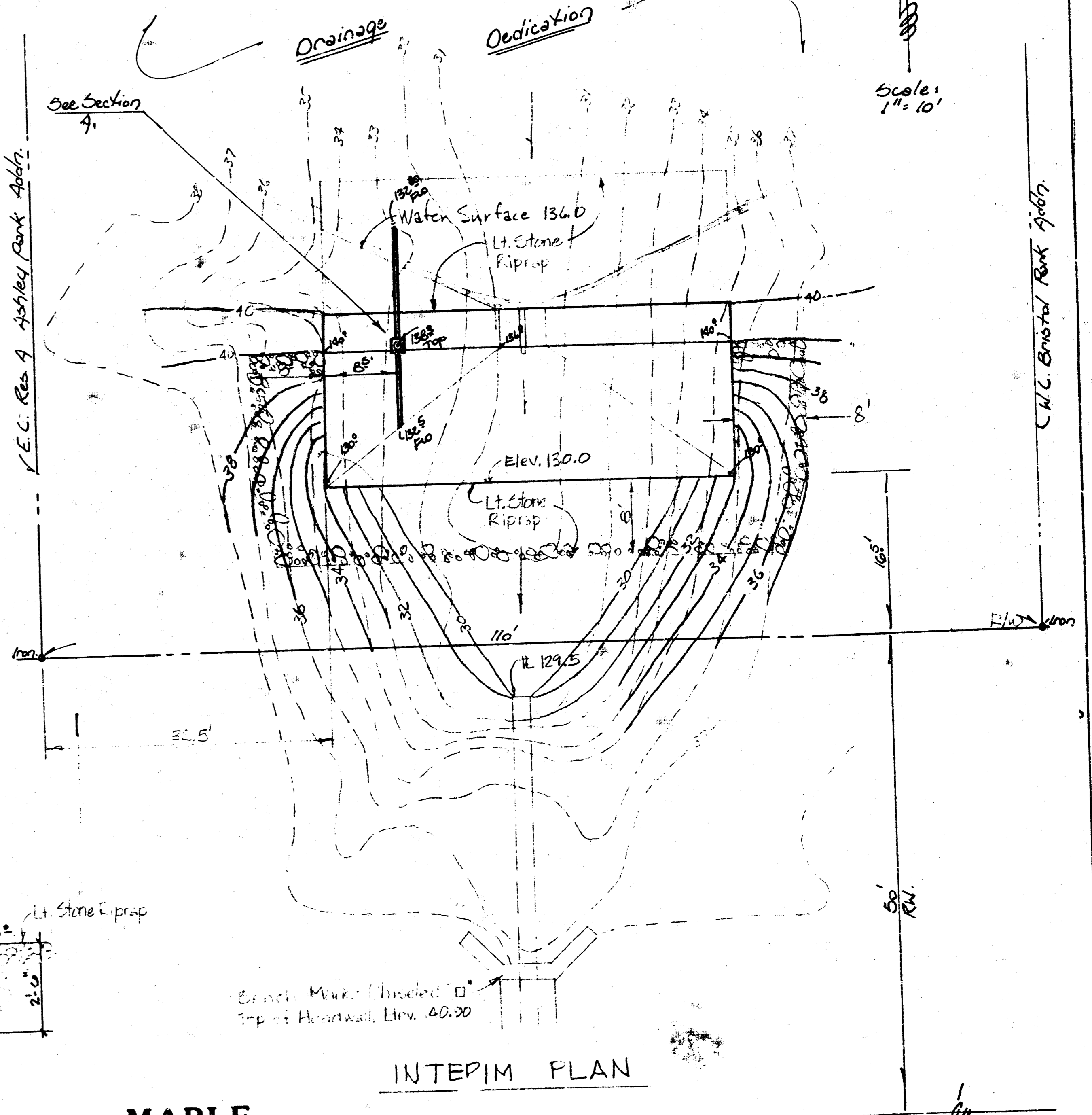
SECTION



SECTION



SECTION



INTERIM PLAN

MAPLE

- STRUCTURAL GENERAL NOTES:**
1. ALL FOOTINGS SHALL BEAR ON A MINIMUM ALLOWABLE TOTAL LOAD SOIL BEARING PRESSURE OF 2,000 PSF.
 2. FOOTINGS CENTERED UNDER SUPPORTING MEMBERS. (TYPICAL UNLESS OTHERWISE NOTED).
 3. ALL CAST-IN-PLACE CONCRETE SHALL HAVE A MIN. COMPRESSIVE STRENGTH OF 3,000 PSI @ 28 DAYS. (TYPICAL UNLESS NOTED).
 4. NO ALUMINUM CONDUIT SHALL BE IMBEDDED IN ANY CONCRETE.
 5. CONCRETE PROTECTION FOR REINFORCEMENT SHALL BE 3/4" FOR SLABS, 1 1/2" CLEAR FOR BEAMS, & COLUMNS, 2" CLEAR FOR FORMED EXPOSED SURFACES AND 3" CLEAR FOR FOOTINGS (TYPICAL UNLESS OTHERWISE NOTED).
 6. ALL REINFORCING BARS #3, #4 AND #5 SHALL MEET ASTM A615 GRADE 40.
 7. REINFORCING BAR QUANTITIES SHOWN ARE FOR ESTIMATING PURPOSES ONLY.
 8. PROVIDE 4-#5 X 40-0 AND 4-#4 X 40-0 MARK EX. EXTRA BARS FOR USE AS DIRECTED.
 9. REINFORCEMENT SHALL BE CONTINUOUS & LAPPED 30 BAR DIAMETERS (2'-0" MIN.), EXCEPT AS NOTED & PROVIDE CORNER BARS OF SAME SIZE AND SPACING.
 10. REINFORCEMENT SHALL BE DETAILED IN ACCORDANCE WITH THE LATEST A.C.I. DETAILING MANUAL.
 11. CHAMFER ALL EXPOSED CONCRETE CORNERS OF WALLS.
 12. SLABS ON GRADE SHALL BE 4" THICK W/6X6 - 10/10 MESH UNLESS OTHERWISE NOTED.
 13. ALL MESH SHALL MEET ASTM A-185; LAP A MIN. OF 6".
 14. ALL PRECAST/PRESTRESSED CONCRETE MEMBERS, FRAMING & CONNECTIONS SHALL CONFORM TO THE LATEST PCI & ACI SPECIFICATIONS.
 15. THE PRESTRESS/PRECAST MFR. SHALL FURNISH SHOP DRAWINGS ALONG WITH SUPPORTING CALCULATIONS FOR APPROVAL BY ENGINEER BEFORE FABRICATION.
 16. ALL PRECAST/PRESTRESSED CONCRETE SHALL BE NORMAL WEIGHT (150PCF) WITH A MIN. COMPRESSIVE STRENGTH OF 5,000 PSI @ 28 DAYS; COMPRESSIVE STRENGTH @ INITIAL PRESTRESS RELEASE SHALL BE 3,500 PSI.
 17. NON-SHRINK GROUT WHERE INDICATED ON PLANS SHALL BE NON-METALLIC WITH A MIN. COMPRESSIVE OF 5,000 PSI @ 28 DAYS. (FIVE STAR GROUT BY U.S. GROUT CORP. OR APPROVED EQUAL).
 18. WELDING SHALL CONFORM TO A.W.S. SPECIFICATIONS. ALL WELDING TO BE BY CERTIFIED WELDERS.
 19. NO AREA OF THE STRUCTURE SHALL BE LOADED WITH CONSTRUCTION MATERIALS OR EQUIPMENT THAT EXCEEDS FINAL DESIGN CRITERIA.
 20. TEMPORARY BRACING & SHORING AGAINST WIND & ERECTION CONDITIONS TO BE THE RESPONSIBILITY OF THE GENERAL CONTRACTOR.
 21. CONTRACTOR TO VERIFY ALL DIMENSIONS AND ELEVATIONS WITH EXISTING CONDITIONS.

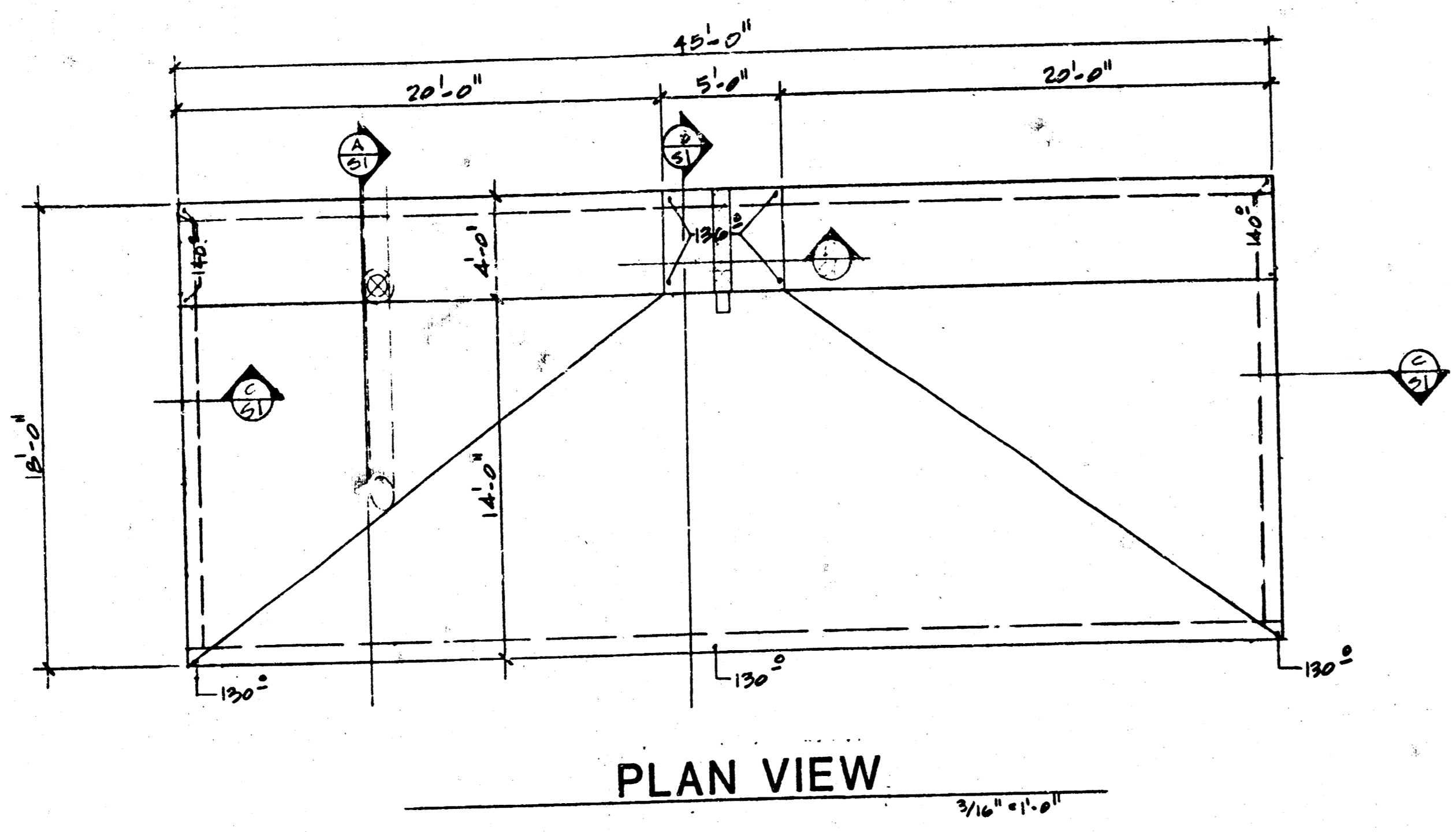
NOTE TO CONTRACTOR
 INSPECTION AND TESTING FOR THIS PROJECT IS TO BE PERFORMED BY A LICENSED CONSULTING ENGINEER REGISTERED WITH THE ENGINEERING BOARD OF THE STATE OF KANSAS IN ACCORDANCE WITH THE CITY ENGINEERING PRACTICES ACT. THE PROFESSIONAL ENGINEER IS NOT TO BE RESPONSIBLE FOR ANY DAMAGE TO THE STRUCTURE OR TO THE PUBLIC CAUSED BY THE CONTRACTOR'S NEGLIGENCE OR FOR ANY WORK COMMENCED IN VIOLATION OF ANY CITY ORDINANCE OR CITY ENGINEER'S ORDER.

APPROVED AS NOTED
 BY CITY ENGINEER OF WICHITA

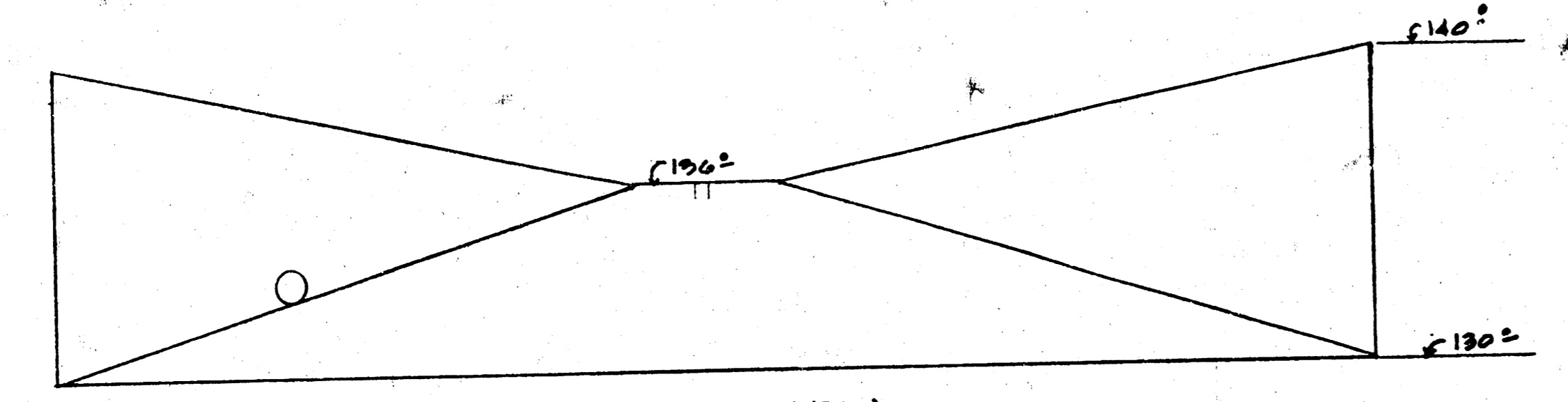
Sanitary Sewer _____
 Storm Sewer _____
 Date: 4/4/29
 City Engineer _____

**PRIVATE STORM WATER WEIR
 BRISTOL PARK ADDITION
 CITY OF WICHITA, KS**

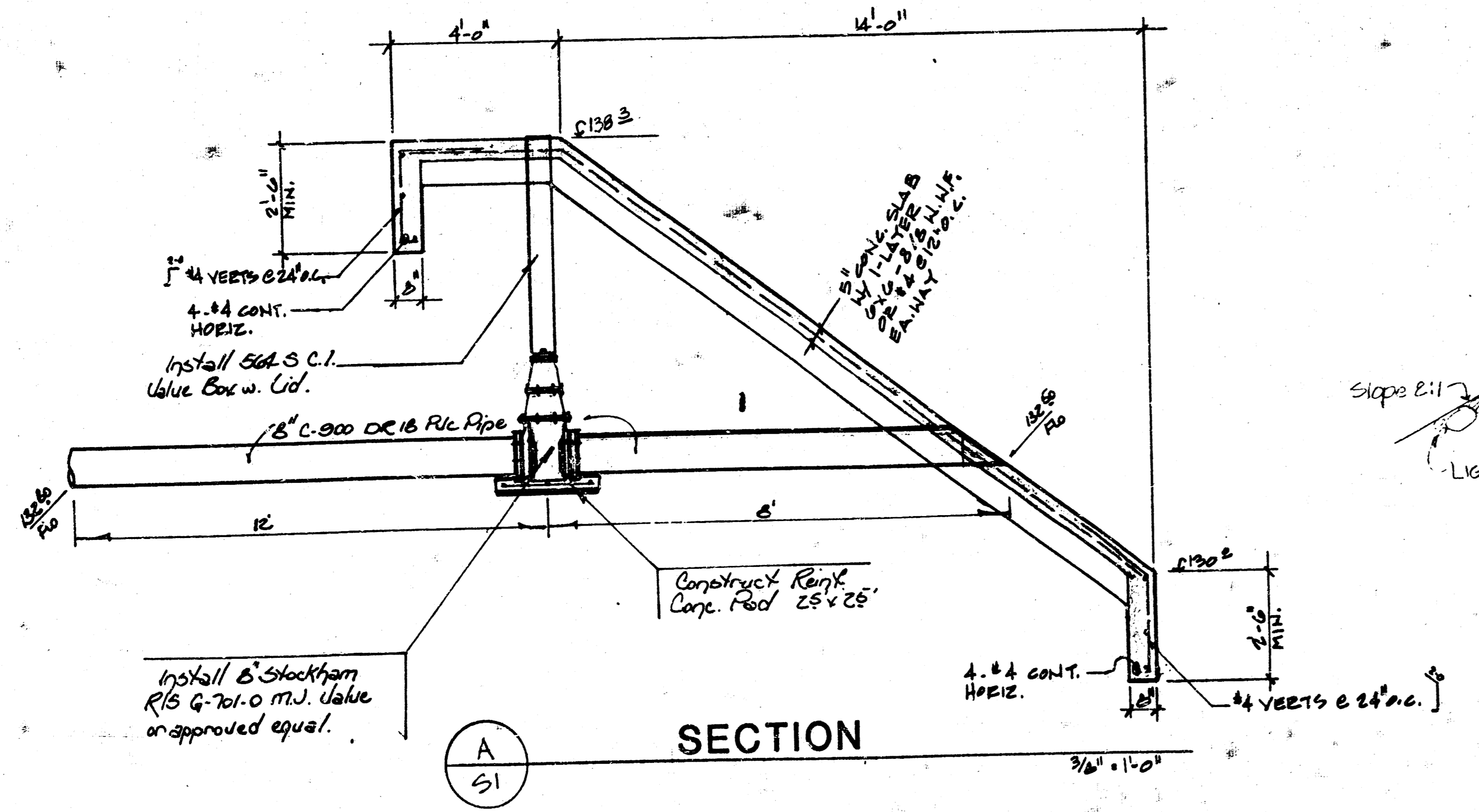
C.H.C. Bristol Park 3/6/29



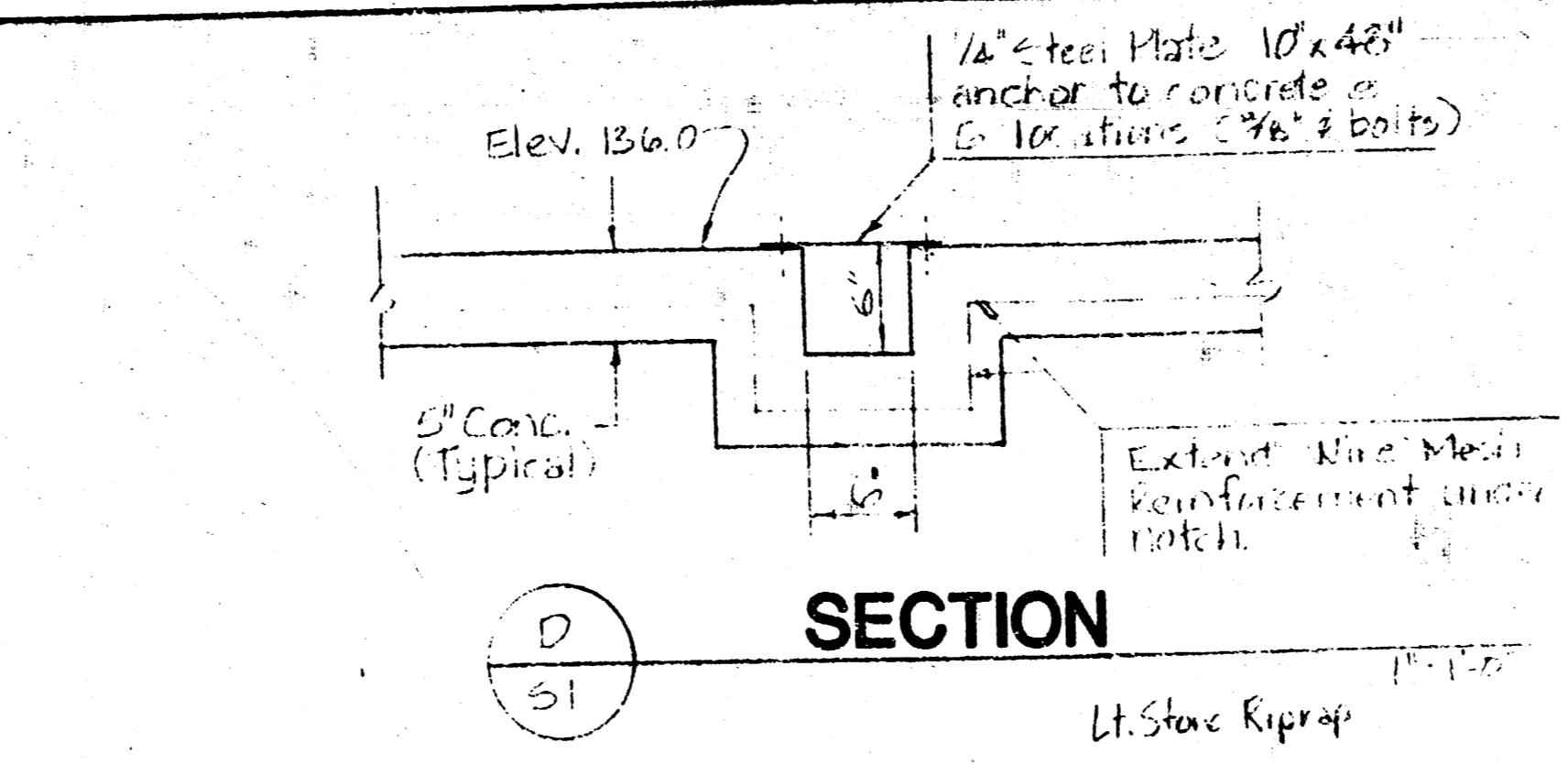
PLAN VIEW



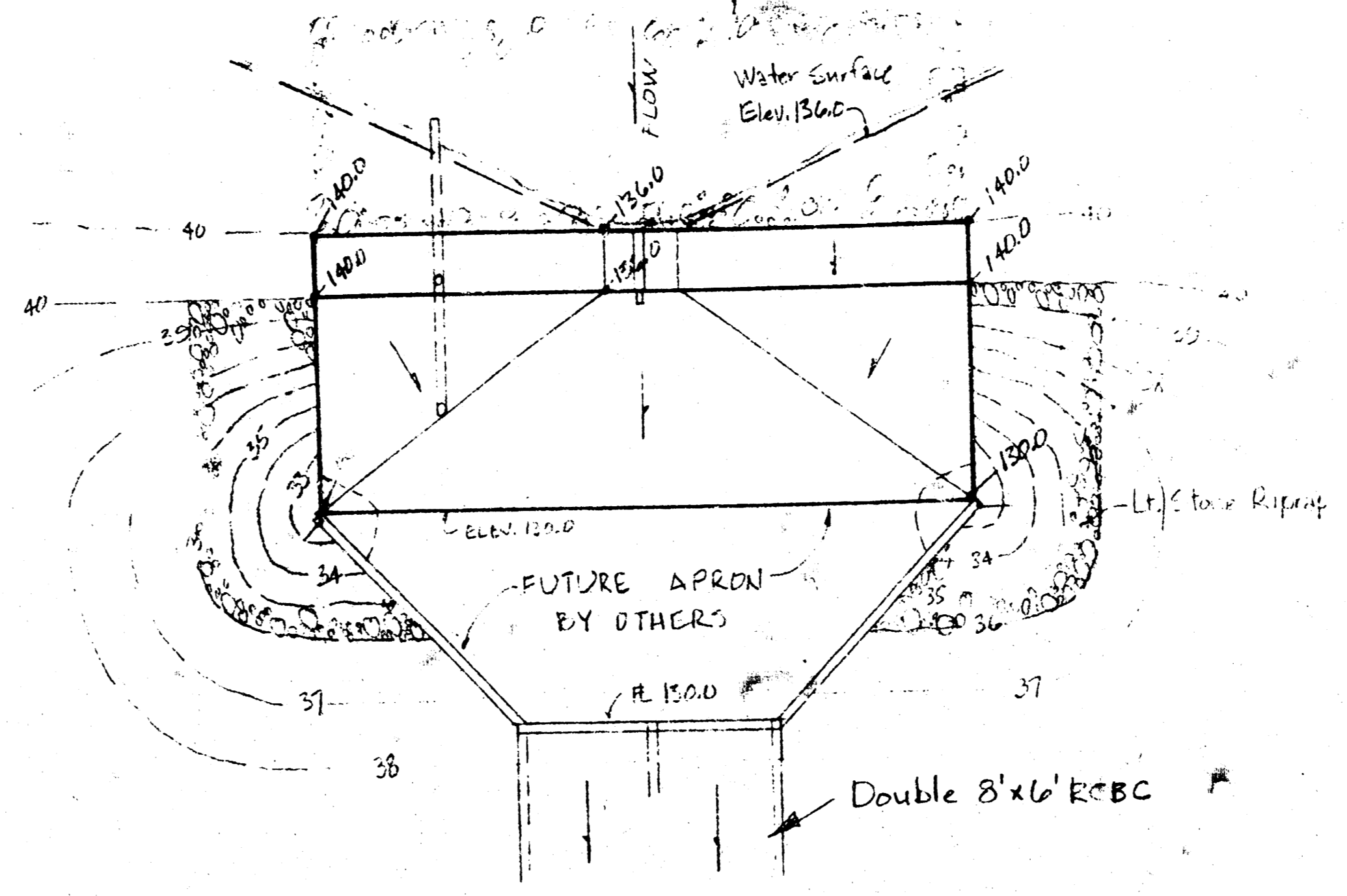
END VIEW



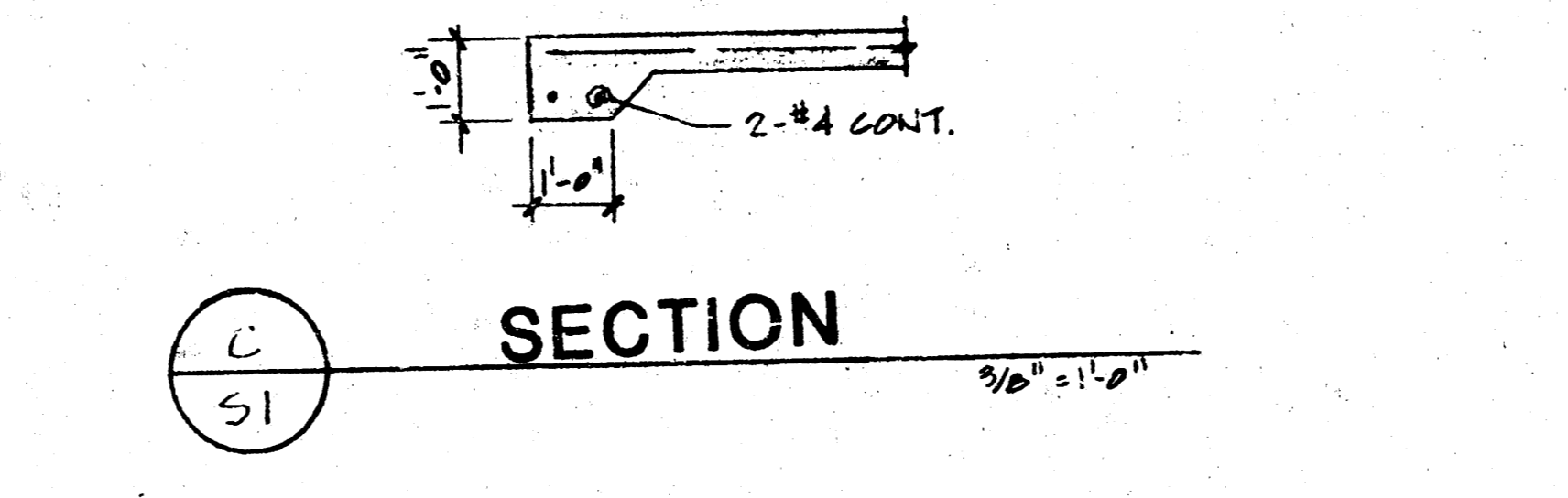
SECTION



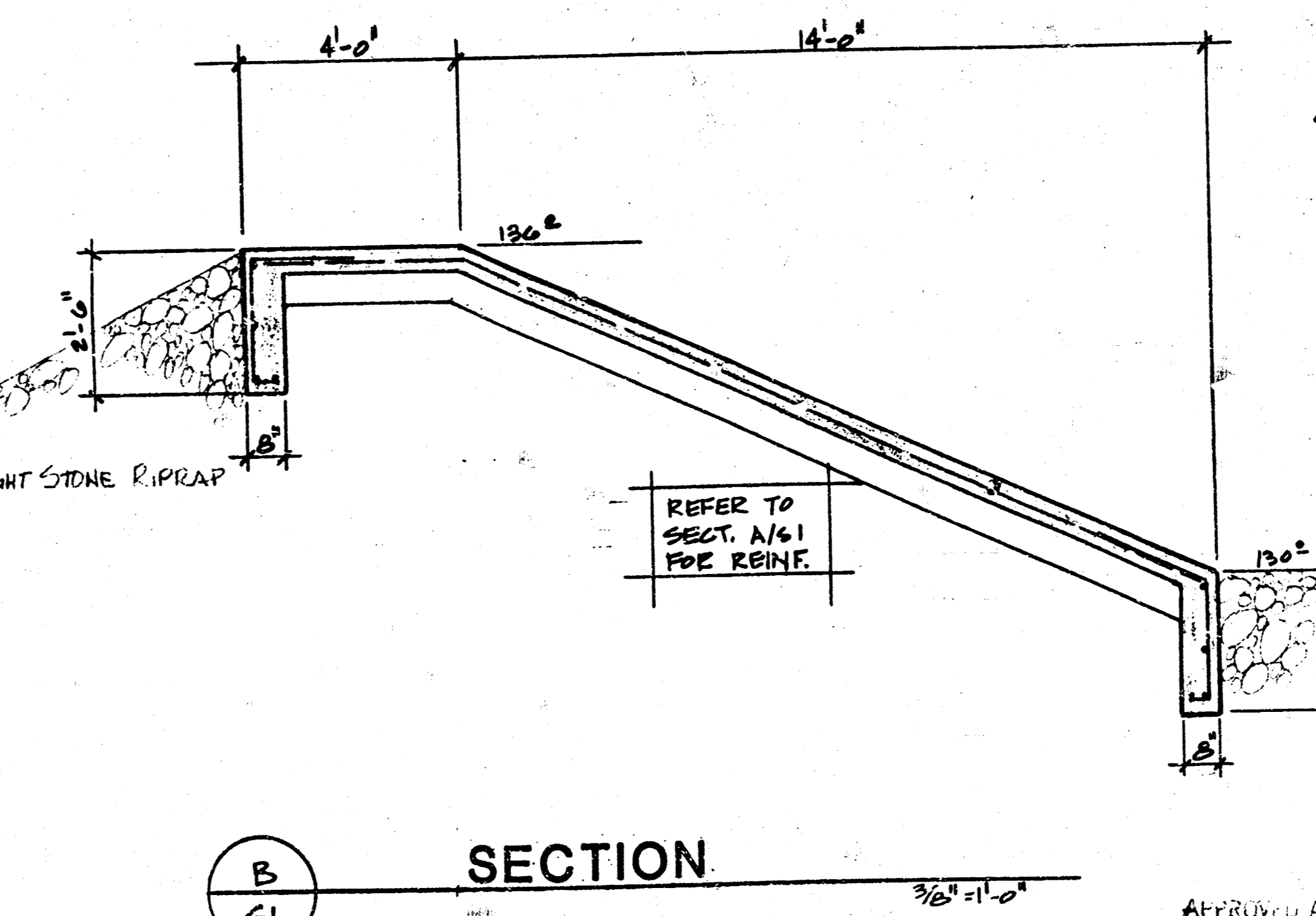
SECTION



FUTURE PLAN

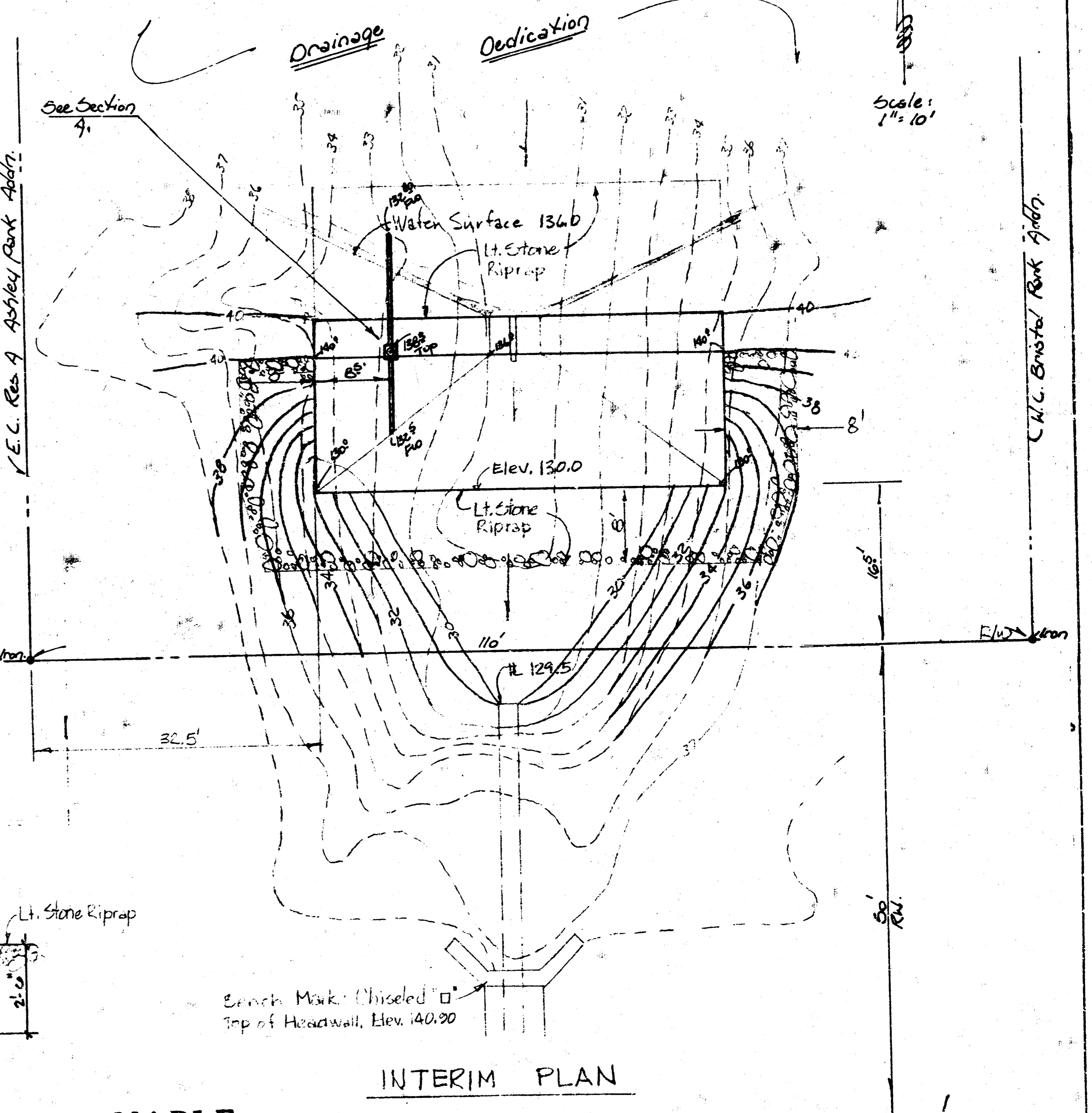


SECTION



SECTION

- STRUCTURAL GENERAL NOTES:**
1. ALL FOOTINGS SHALL BEAR ON A MINIMUM ALLOWABLE TOTAL LOAD SOIL BEARING PRESSURE OF 2,000 PSF.
 2. FOOTINGS CENTERED UNDER SUPPORTING MEMBERS. (TYPICAL UNLESS OTHERWISE NOTED).
 3. ALL CAST-IN-PLACE CONCRETE SHALL HAVE A MIN. COMPRESSIVE STRENGTH OF 3,000 PSI @ 28 DAYS. (TYPICAL UNLESS NOTED).
 4. NO ALUMINUM CONDUIT SHALL BE IMBEDDED IN ANY CONCRETE.
 5. CONCRETE PROTECTION FOR REINFORCEMENT SHALL BE 3/4" FOR SLABS, 1 1/2" CLEAR FOR BEAMS, & COLUMNS, 2" CLEAR FOR FORMED EXPOSED SURFACES AND 3" CLEAR FOR FOOTINGS (TYPICAL UNLESS OTHERWISE NOTED).
 6. ALL REINFORCING BARS #3, #4 AND #5 SHALL MEET ASTM A615 GRADE 40.
 7. REINFORCING BAR QUANTITIES SHOWN ARE FOR ESTIMATING PURPOSES ONLY.
 8. PROVIDE 4-#5 X 40-0 AND 4-#4 X 40-0 MARK EX. EXTRA BARS FOR USE AS DIRECTED.
 9. REINFORCEMENT SHALL BE CONTINUOUS & LAPPED 30 BAR DIAMETERS (2'-0" MIN.), EXCEPT AS NOTED & PROVIDE CORNER BARS OF SAME SIZE AND SPACING.
 10. REINFORCEMENT SHALL BE DETAILED IN ACCORDANCE WITH THE LATEST A.C.I. DETAILING MANUAL.
 11. CHAMBER ALL EXPOSED CONCRETE CORNERS OF WALLS.
 12. SLABS ON GRADE SHALL BE 4" THICK W/6X6 - 10/10 MESH UNLESS OTHERWISE NOTED.
 13. ALL MESH SHALL MEET ASTM A-195; LAP A MIN. OF 6".
 14. ALL PRECAST/PRESTRESSED CONCRETE MEMBERS, FRAMING & CONNECTIONS SHALL CONFORM TO THE LATEST PCI & ACI SPECIFICATIONS.
 15. THE PRESTRESS/PRECAST MFG. SHALL FURNISH SHOP DRAWINGS ALONG WITH SUPPORTING CALCULATIONS FOR APPROVAL BY ENGINEER BEFORE FABRICATION.
 16. ALL PRECAST/PRESTRESSED CONCRETE SHALL BE NORMAL WEIGHT (150PCF) WITH A MIN. COMPRESSIVE STRENGTH OF 5,000 PSI @ 28 DAYS; COMPRESSIVE STRENGTH @ INITIAL PRESTRESS RELEASE SHALL BE 3,500 PSI.
 17. NON-SHRINK GROUT WHERE INDICATED ON PLANS SHALL BE NON-METALLIC WITH A MIN. COMPRESSIVE OF 5,000 PSI @ 28 DAYS. (FIVE STAR GROUT BY U.S. GROUT CORP. OR APPROVED EQUAL).
 18. WELDING SHALL CONFORM TO A.W.S. SPECIFICATIONS. ALL WELDING TO BE BY CERTIFIED WELDERS.
 19. NO AREA OF THE STRUCTURE SHALL BE LOADED WITH CONSTRUCTION MATERIALS OR EQUIPMENT THAT EXCEEDS FINAL DESIGN CRITERIA.
 20. TEMPORARY BRACING & SHORING AGAINST WIND & ERECTION CONDITIONS TO BE THE RESPONSIBILITY OF THE GENERAL CONTRACTOR.
 21. CONTRACTOR TO VERIFY ALL DIMENSIONS AND ELEVATIONS WITH EXISTING CONDITIONS.

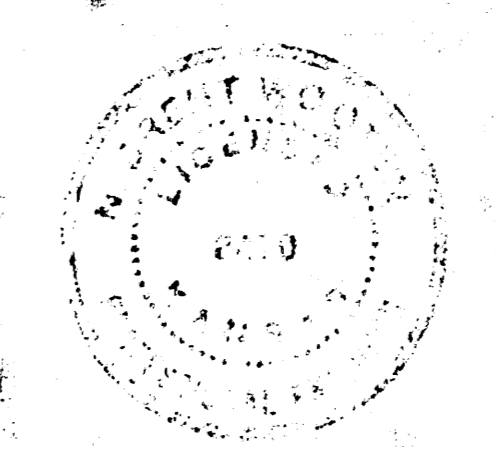


MAPLE INTERIM PLAN

NOTE TO CONTRACTOR
 INSPECTION AND TESTING FOR THIS PROJECT IS TO BE PERFORMED BY A LICENSED CONSULTING ENGINEERING FIRM IN ACCORDANCE WITH THE CITY OF WICHITA ENGINEERING PRACTICES. NO WORK SHALL BE COMPLETED IN URBAN AREAS WITHOUT WRITTEN APPROVAL FROM THE CITY ENGINEER.

APPROVED AS NOTED
 By CITY ENGINEER OF WICHITA

Sanitary Sewers
 Storm Sewers: RH 4/4/09
 Driveway/Proposals
 Not Marked



**PRIVATE STORM WATER WEIR
 BRISTOL PARK ADDITION
 CITY OF WICHITA, KS**