

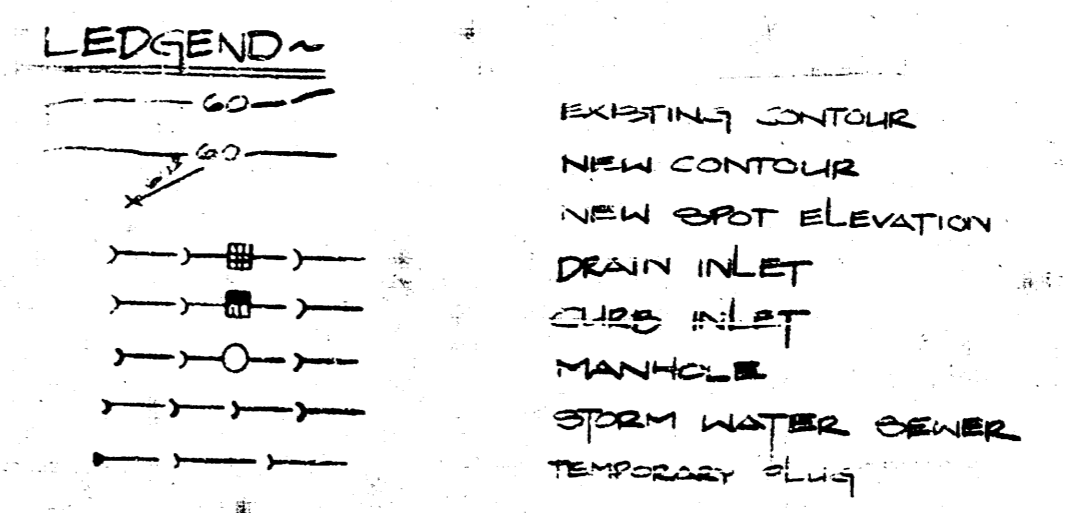
- NOTES**
1. Contractor to verify and coordinate exact location of roof drain lines with Plumbing Drawings.
 2. Finish grades shown are to the top of pavement or grassed area.
 3. Rough grade size as shown along streets. Prior to paving and finish grading, verify finish grades with "City of Wichita" and make adjustments as necessary.
 4. Rough grade around building to 6" below finish floor. Refer to building plans for finish grading around building.
 5. Locate all storm sewer structures from "Base Point". Assume property line north from "Base Point" to be true north.
 6. All manhole lids, inlet grates, and area drain grates to be bolted or self-locked. See Specifications, Section 210, Part 1, Paragraph B-1.
 7. Culvert pipes shall be RCP or GCP as approved by the City of Wichita. All culverts shall have flared end sections. Set culverts to existing ditch grades with the top of pipe a minimum of 12" below the adjacent street grade.
 8. Grading contractor to remove existing trees along 21st Street, clean and reshape ditch and R.O.W. on 21st Street and Woodlawn.
 9. Grade entrances to match existing grades on Woodlawn and 21st Street.

10. ALL WORK FROM INLET #10-1 IS TO BE PLANNED WITH A PLUMBING CONTRACTOR AT 21ST STREET AND A DRAIN TIE-IN WILL BE CONSTRUCTED ALONG WOODLAWN; THE CITY WILL CONNECT THIS TIE-IN FROM INLET #10-1 INTO THE WOODLAWN STORM SEWER. SEE PLAN FOR THE 10" DRAIN FROM INLET #10-1 TO INLET #10-1 AND INLET #1-4.

STORM WATER SEWER STRUCTURE TABLE

STRUCTURE NUMBER	TYPE OF STRUCTURE	DETAIL NUMBER	LOCATION FROM BASE POINT	
			NORTH	EAST
1-1	Outlet	1/5G-1	1134.00	593.00
1-2	Curb Inlet	1/5G-2	1088.00	593.00
1-3	Inlet, Type A	2/5G-2	927.00	369.00
1-4	Inlet, Type A	2/5G-2	796.00	369.00
1-5	Inlet, Type A	2/5G-2	675.00	359.00
1-6	Inlet, Type A	2/5G-2	600.00	327.00
1-7	Inlet, Type B	3/5G-2	487.00	269.00
1-8	Inlet, Type A	2/5G-2	410.00	259.00
1-9	Inlet, Type B	3/5G-2	338.00	269.00
1-10	Curb Inlet	1/5G-2	200.00	427.00
1A-1	Inlet, Type A	2/5G-2	1071.00	783.00
1A-2	Manhole	1/5G-1	913.00	765.00
1A-3	Inlet, Type A	2/5G-2	827.00	765.00
1A-4	Inlet, Type A	2/5G-2	743.00	765.00
1A-5	Curb Inlet	1/5G-2	591.00	834.00
1A-6	Curb Inlet	1/5G-2	480.00	724.00
1A-7	Curb Inlet	1/5G-2	393.00	630.00
1A-8	Curb Inlet	1/5G-2	336.00	694.00
1B-1	Curb Inlet	1/5G-2	1086.00	443.00
1C-1	Inlet, Type A	2/5G-2	803.00	154.00
1D-1	Inlet, Type A	2/5G-2	579.00	535.00
1E-1	Inlet, Type A	2/5G-2	630.00	720.00
1F-1	Inlet, Type B	3/5G-2	538.00	891.00
1G-1	Inlet, Type A	2/5G-2	535.00	667.00
1H-1	Inlet, Type A	2/5G-2	452.00	578.00
1I-1	Inlet, Type A	2/5G-2	313.00	555.00

* BRICK WALLS MAY BE USED IN LIEU OF CONCRETE WALLS AS SHOWN



Bench Mark:
 City standard disc, 45.4' east and 45.4' north of the intersection of
 21st Street and Woodlawn Avenue.
 Elevation = 200.65

CITY PROJECT NUMBER:
 STORM WATER SEWER 488-76-248-208E-000-000-000

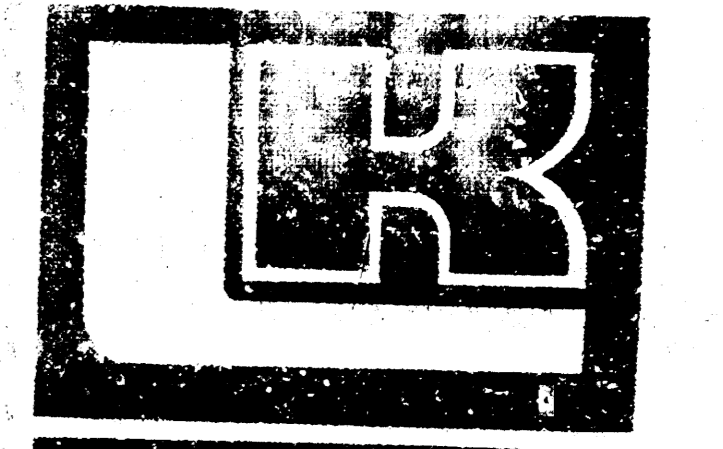
AVAILABLE COPY... FILMED FROM THE BEST

REVISIONS

DATE	ITEM	NO.
1/2/79	FOR CONSTRUCTION	1

REVISIONS

DATE	ITEM	NO.
1/2/79	FOR CONSTRUCTION	1



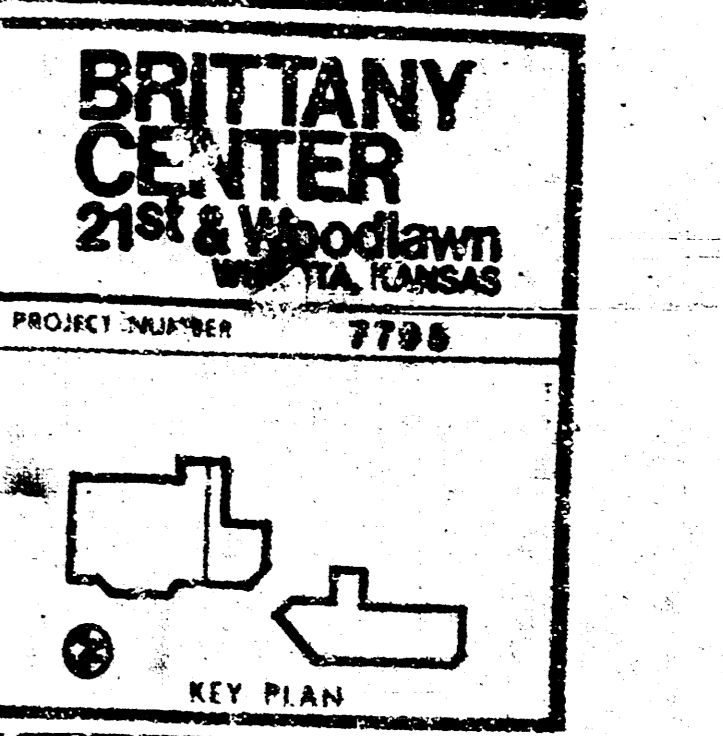
LAW/KINGDON, P.A.
 ARCHITECTS & ENGINEERS
 110 S. MARKET STREET, SUITE 200
 WICHITA, KANSAS 67202
 Copyright © 1978 Law/Kingdon, P.A.

DRAWN	CHECKED
JRJ/JA	EM/EF

RELATED DRAWINGS

SEQUENCE NUMBER

OF SHEETS

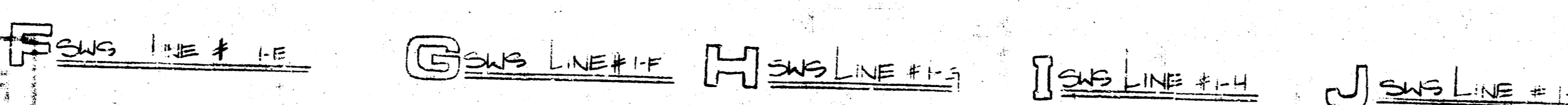
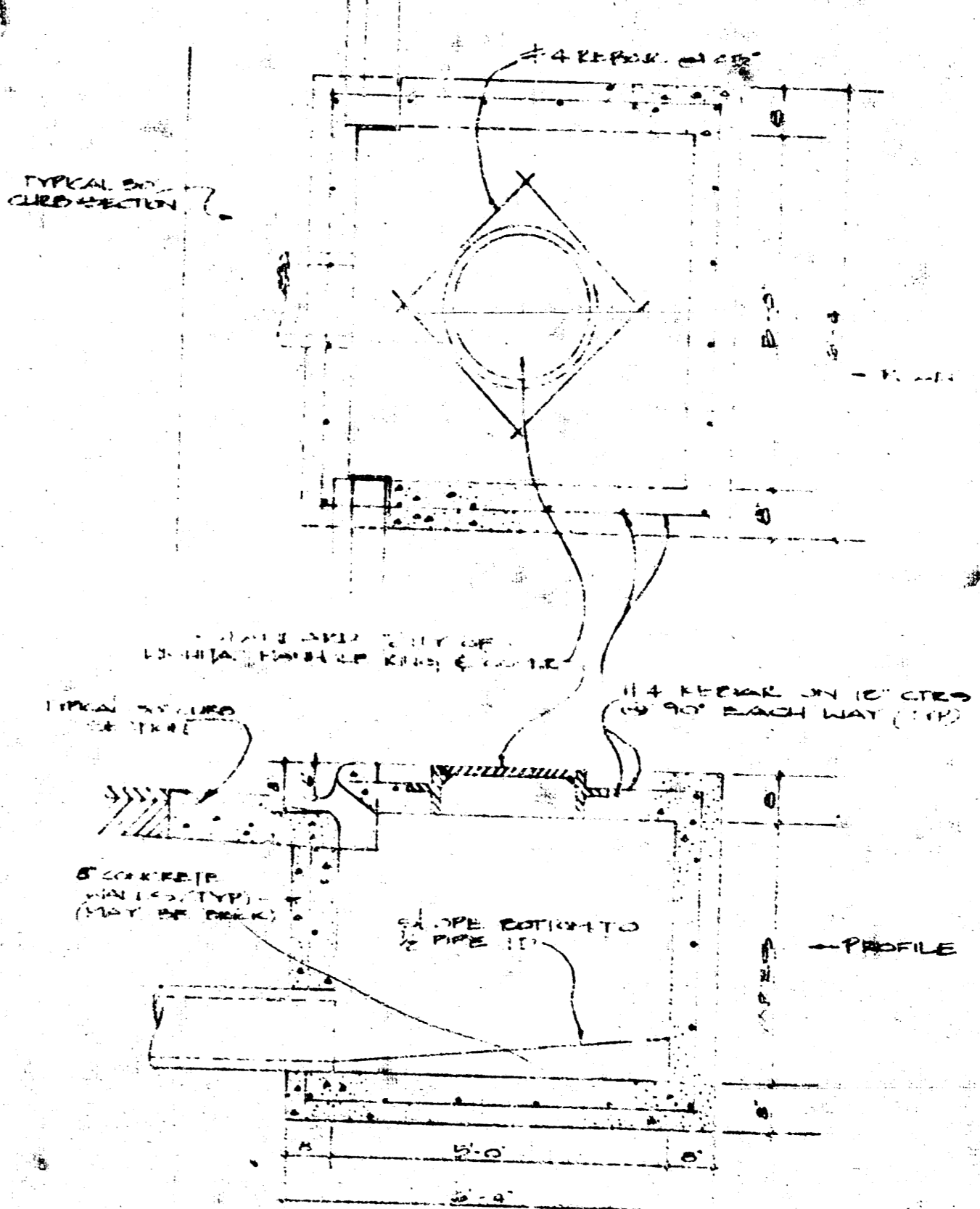
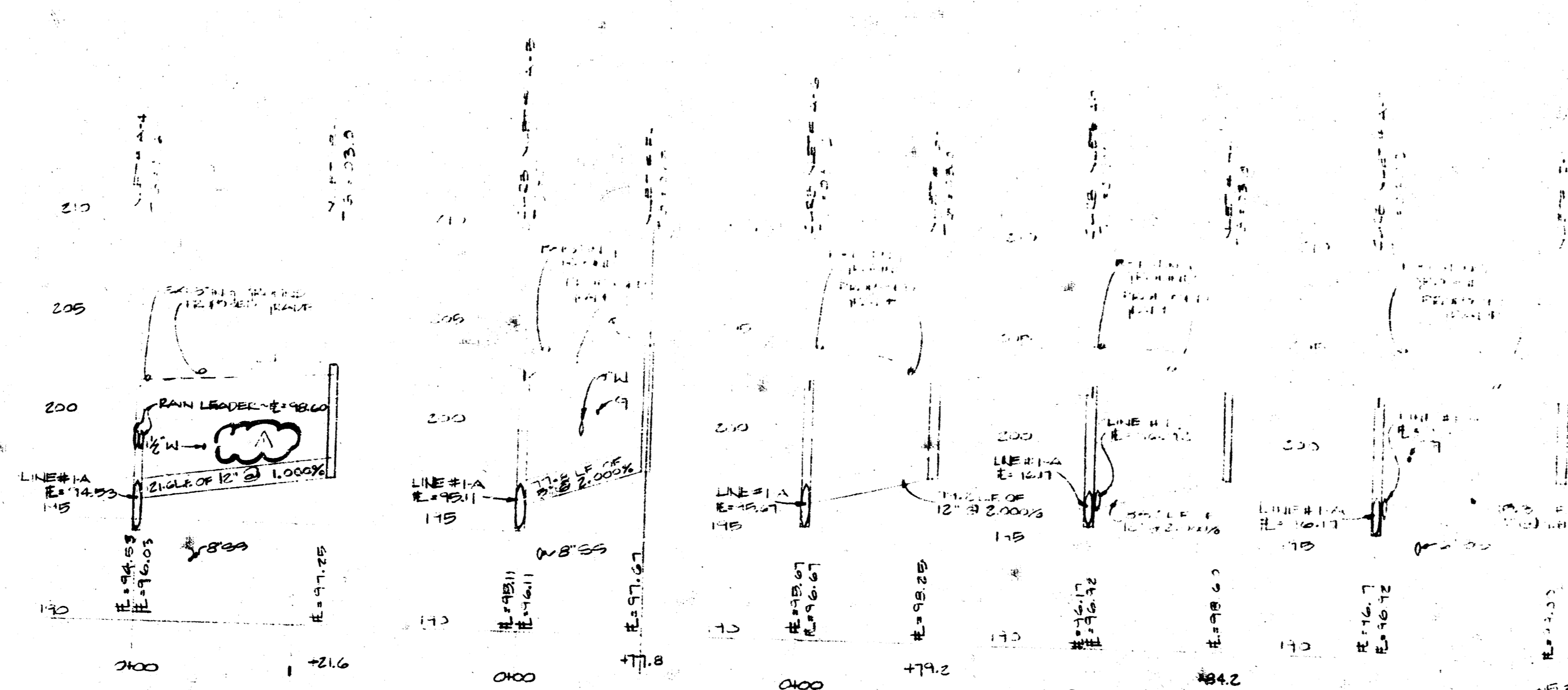
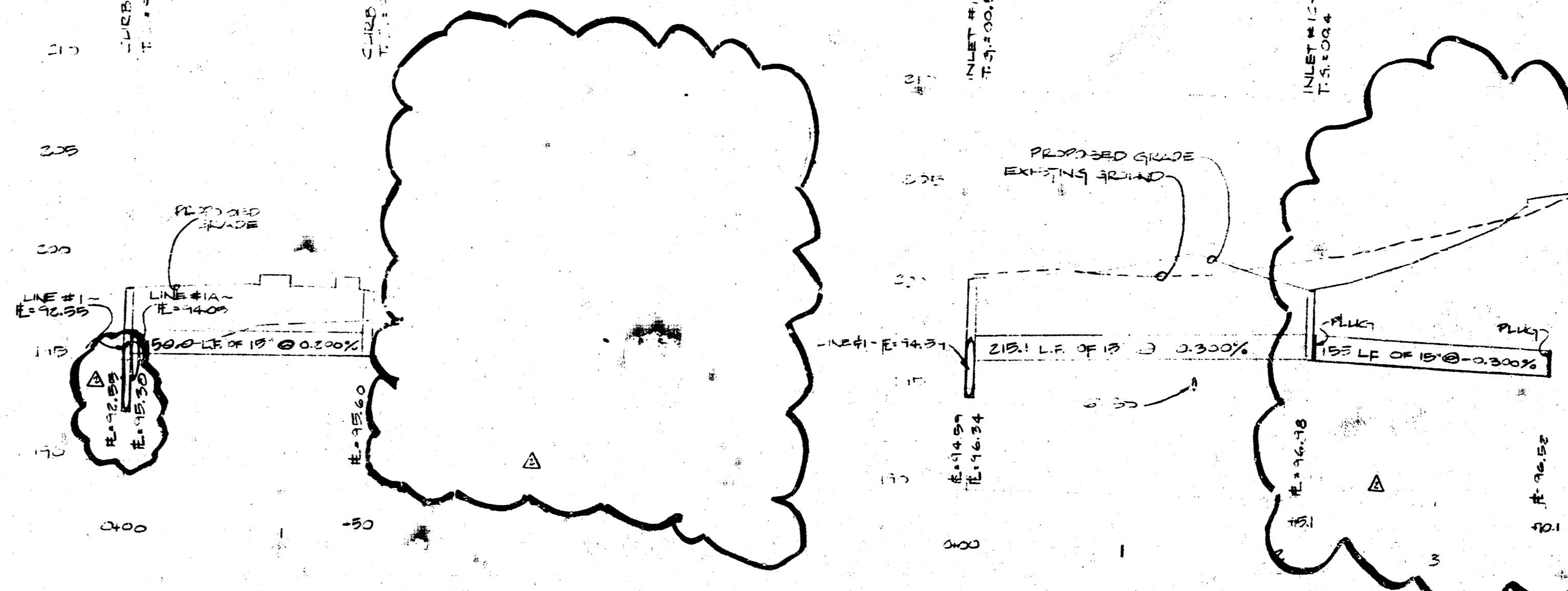
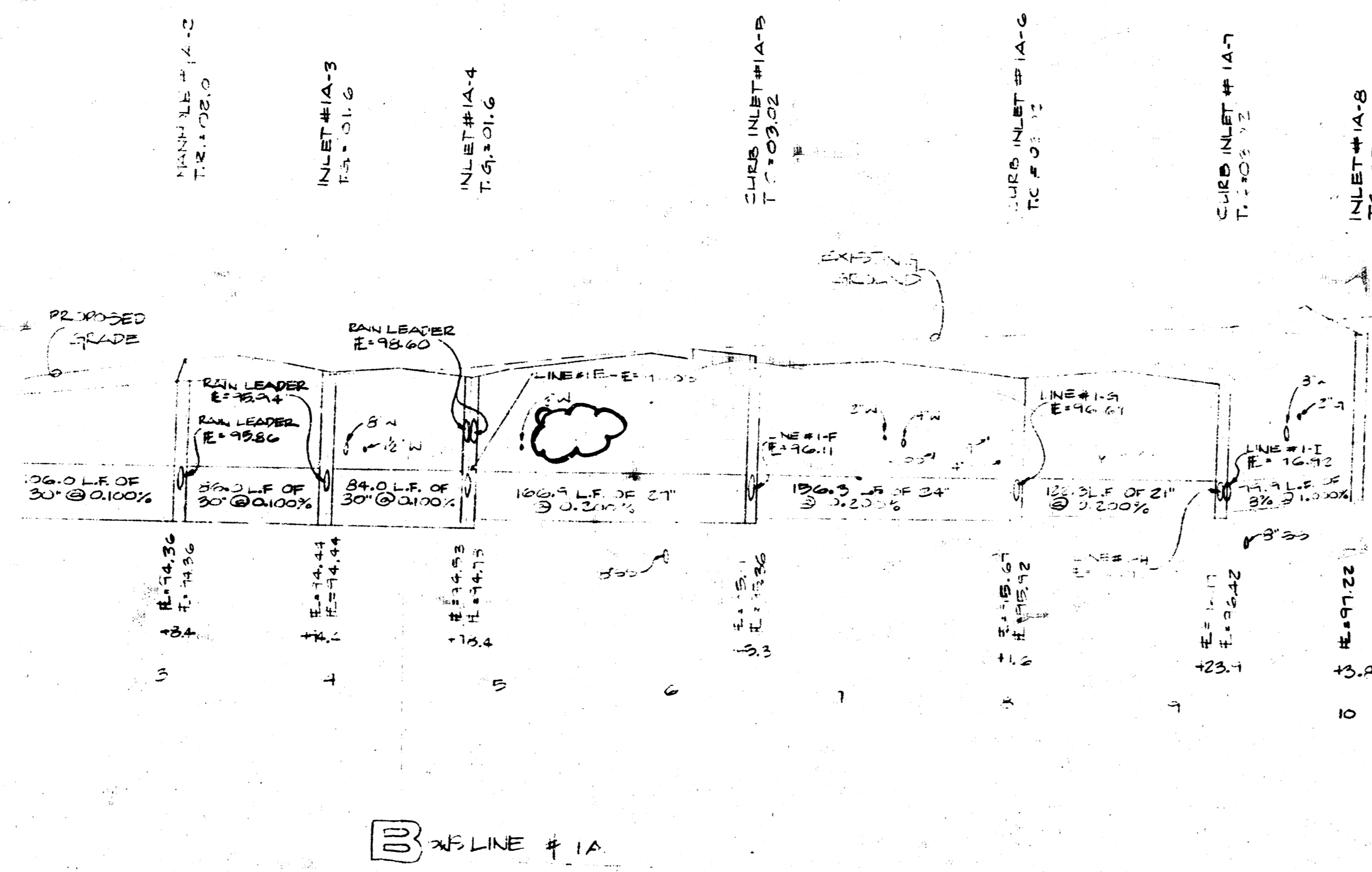
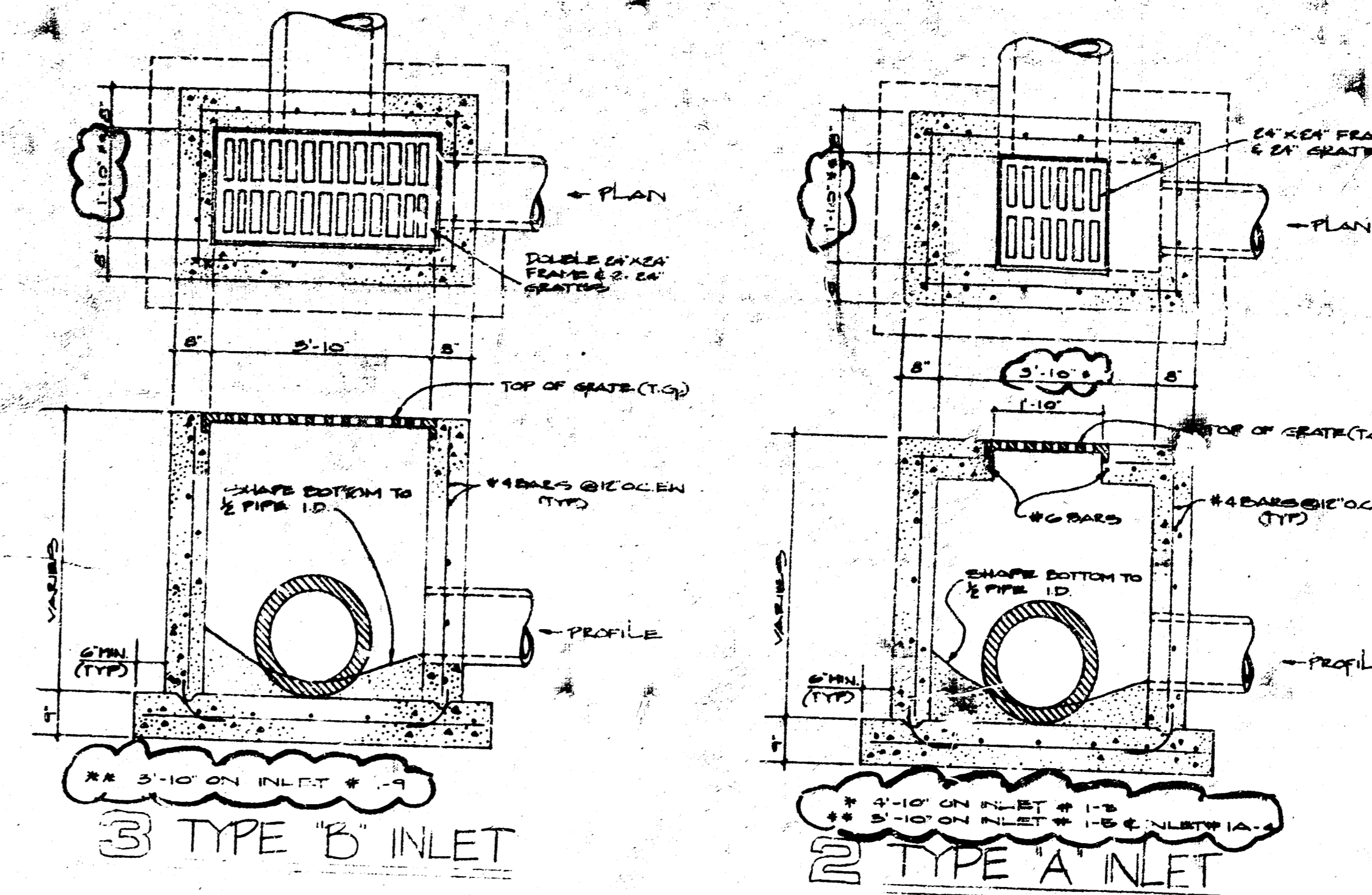
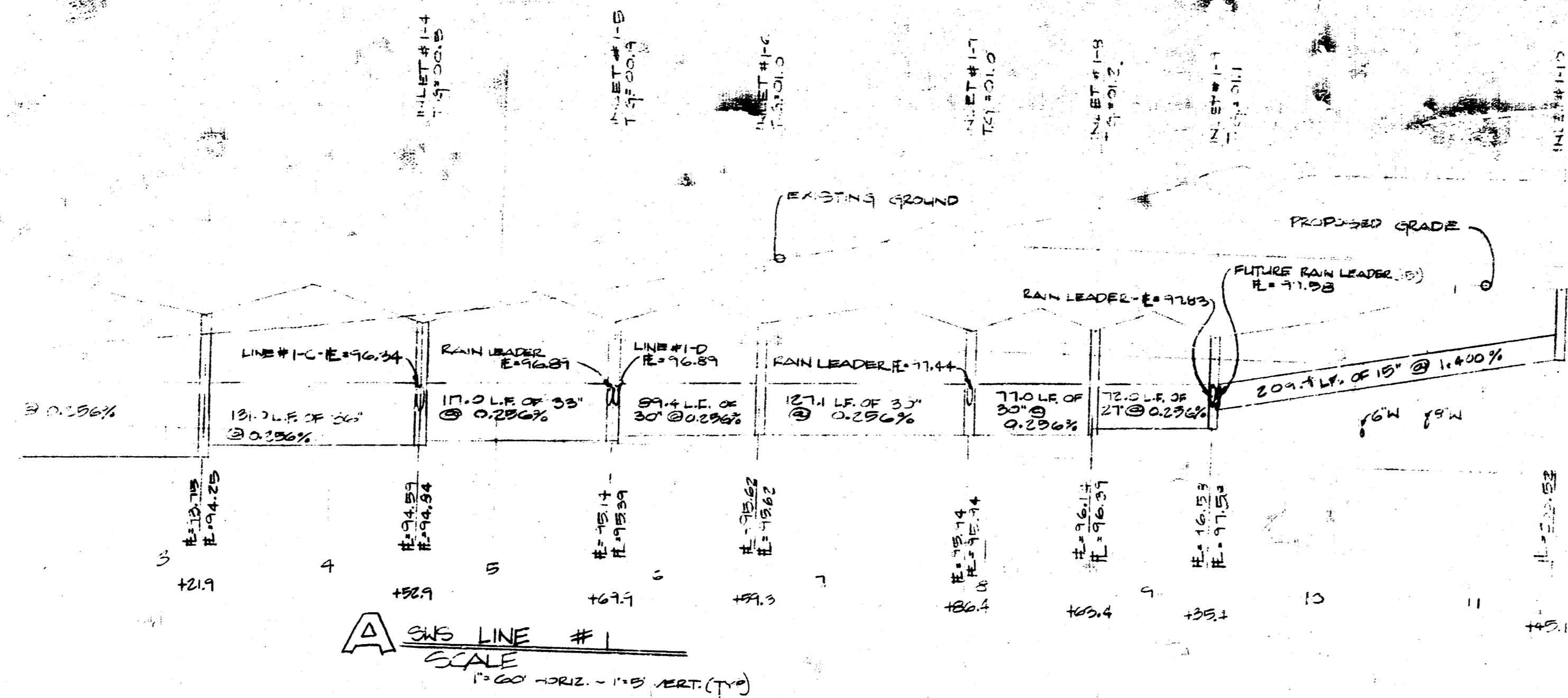


SITE
 TENANT

SITE GRADING PLAN
 SHEET TITLE

TENANT NUMBER SHEET NUMBER

SSG-1



9 CURB INLET
 CITY PROJECT NUMBER: 155-10-245-3051E-000-000-000
 SHEET NUMBER: 4
 SHEETS: 3

AVAILABLE FROM THE BEST COPY

PRINTS ISSUED		
DATE	PURPOSE	NO.
10/27/2011	FOR CONSTRUCTION	1

REVISIONS		
DATE	ITEM	NO.
10/27/2011	FOR CONSTRUCTION	1

FOR CONSTRUCTION: 1/2/11

BRITANNY CENTER
 21st & Woodlawn
 WICHITA, KANSAS

PROJECT NUMBER: 7795

KEY PLAN

SITE

TINANT: STORM WATER SEWER PROFILES & DETAILS

TINANT NUMBER: S
 SHEET NUMBER: 4
 SHEETS: 3