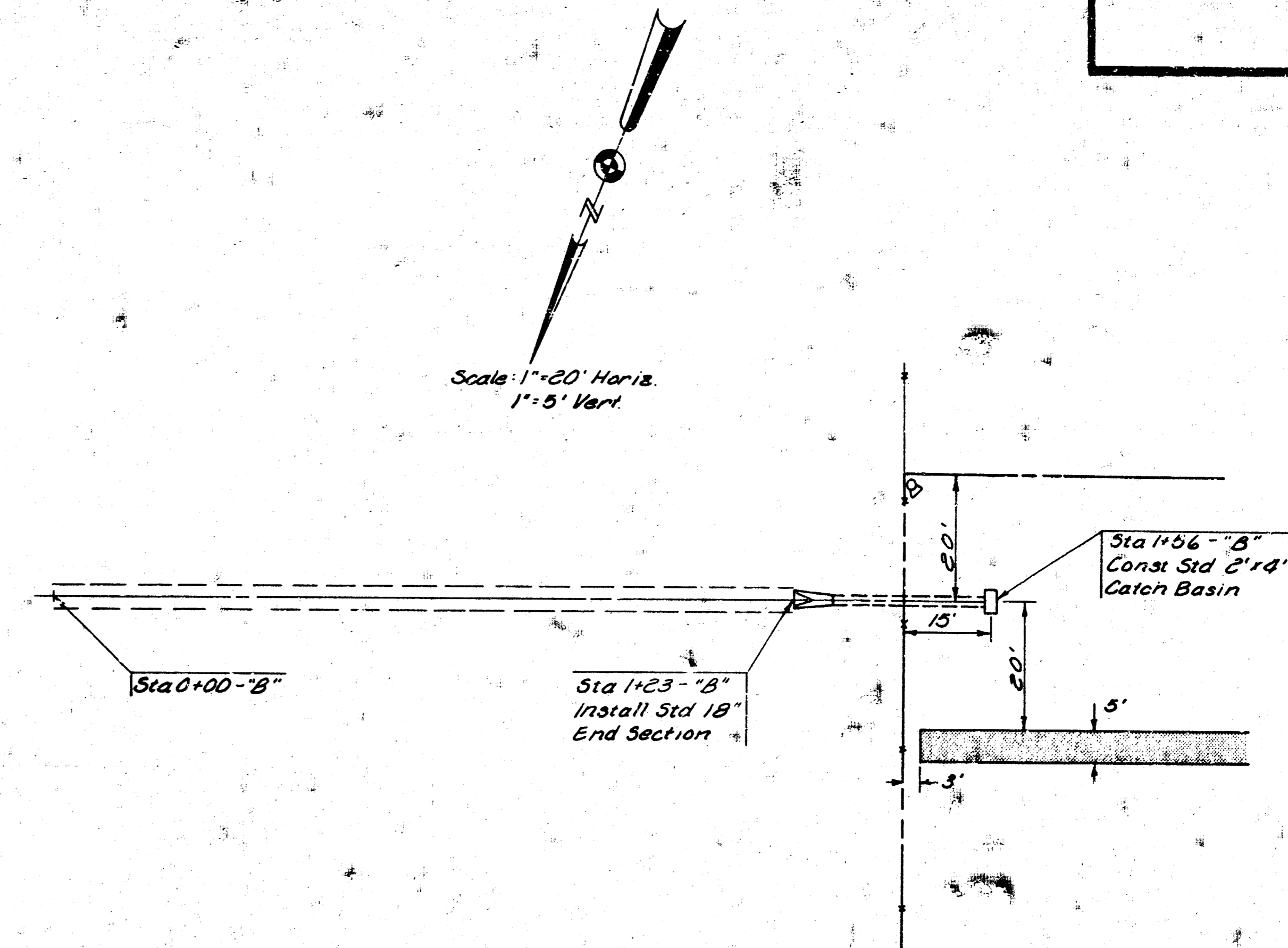
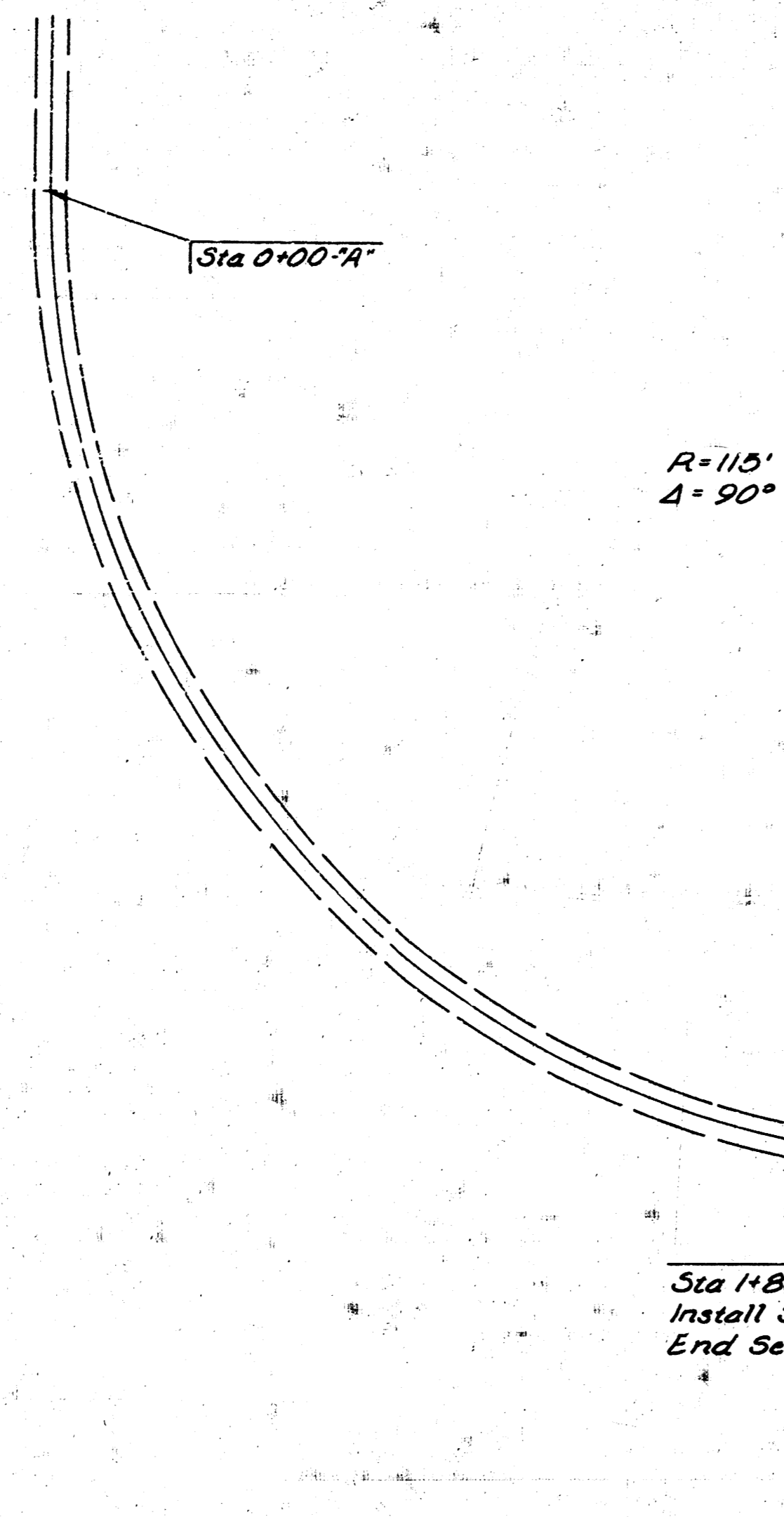
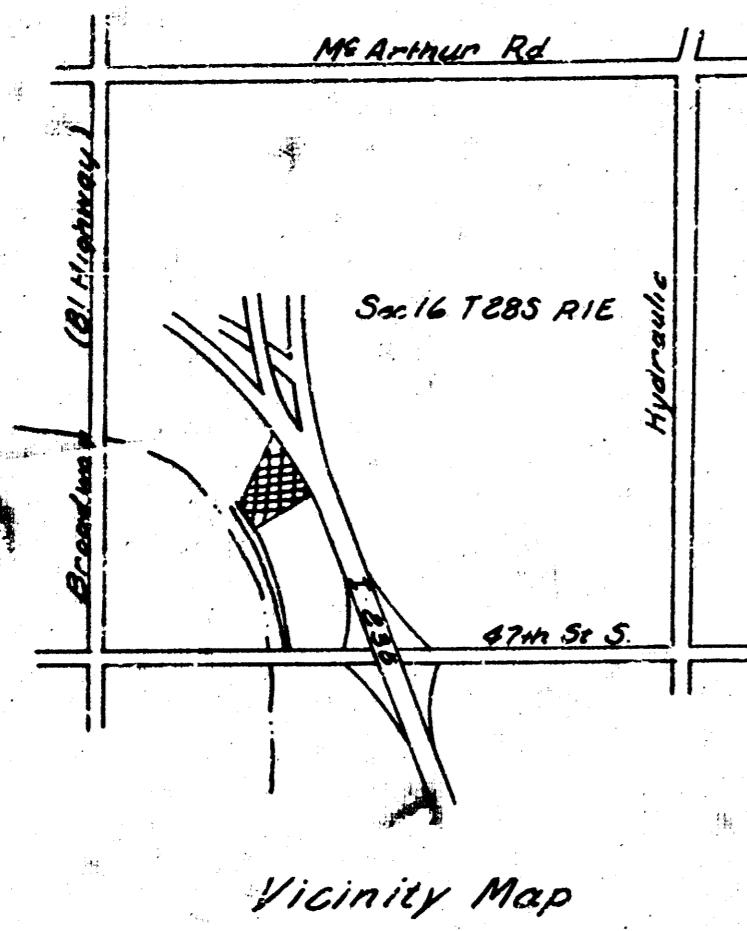


- LEGEND
- PL. BOUNDARY PHASE I
  - /○ EXISTING ELEV. / PROPOSED ELEV.
  - CONCRETE PAVING
  - MERCURY VAPOR FLOODLIGHT ON 30' HINGED POLE
  - DIRECT BURIED NO. 8 AWG TYPE USE
  - ⊠ STANDARD 2'x4' CITY AREA INLET
  - STANDARD CURB INLET - TYPE 1A

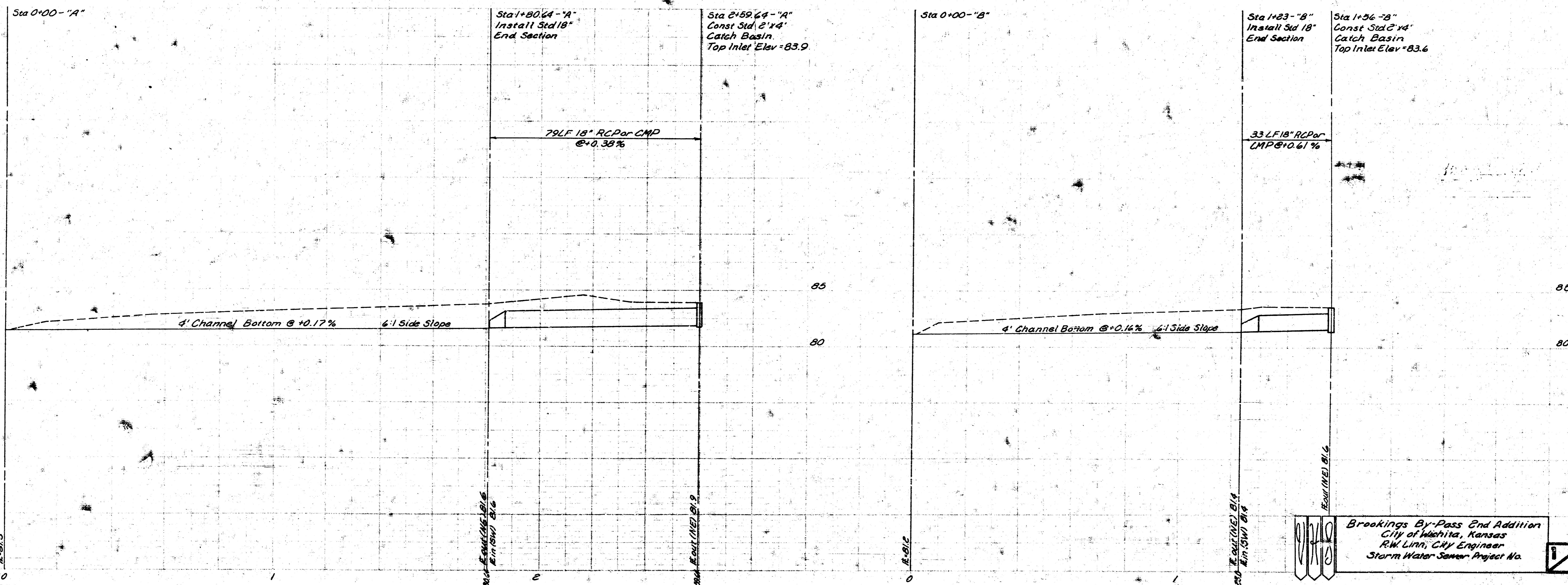
DESIGN KHB	TRUCK TERMINAL BUILDING FOR
DR. BY KRA	THE SANTA FE TRAIL TRANSPORTATION CO.
CK. BY KHB	WICHITA KANSAS
DATE JUNE 78	SITE PLAN
JOB NO. 78-224	VAN DOREN · HAZARD · STALLINGS ARCHITECTS · ENGINEERS · PLANNERS WICHITA, KANSAS
	SHEET <b>C</b> OF 1

Grades Revised - 11-28-78  
REVISED 9/7/78



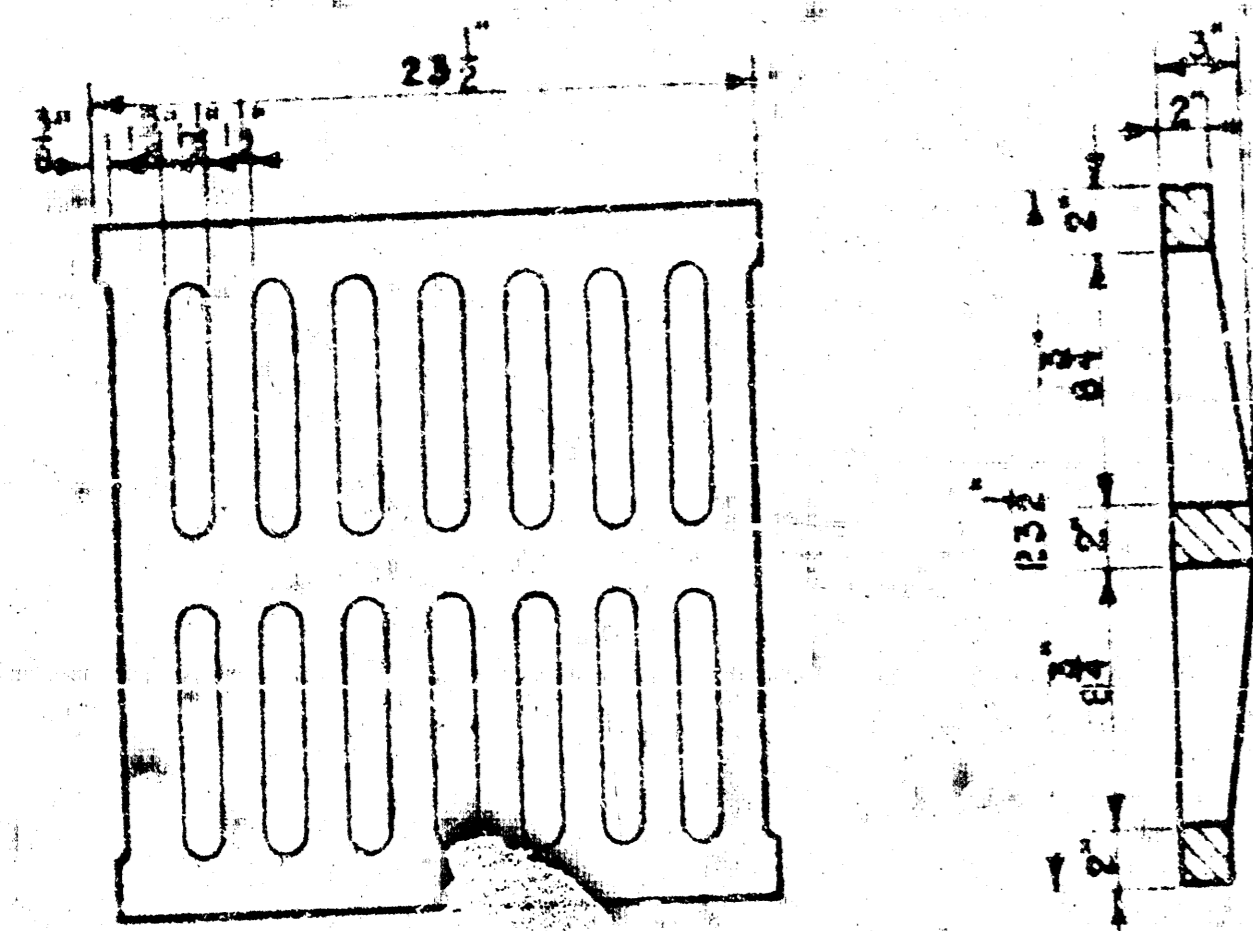
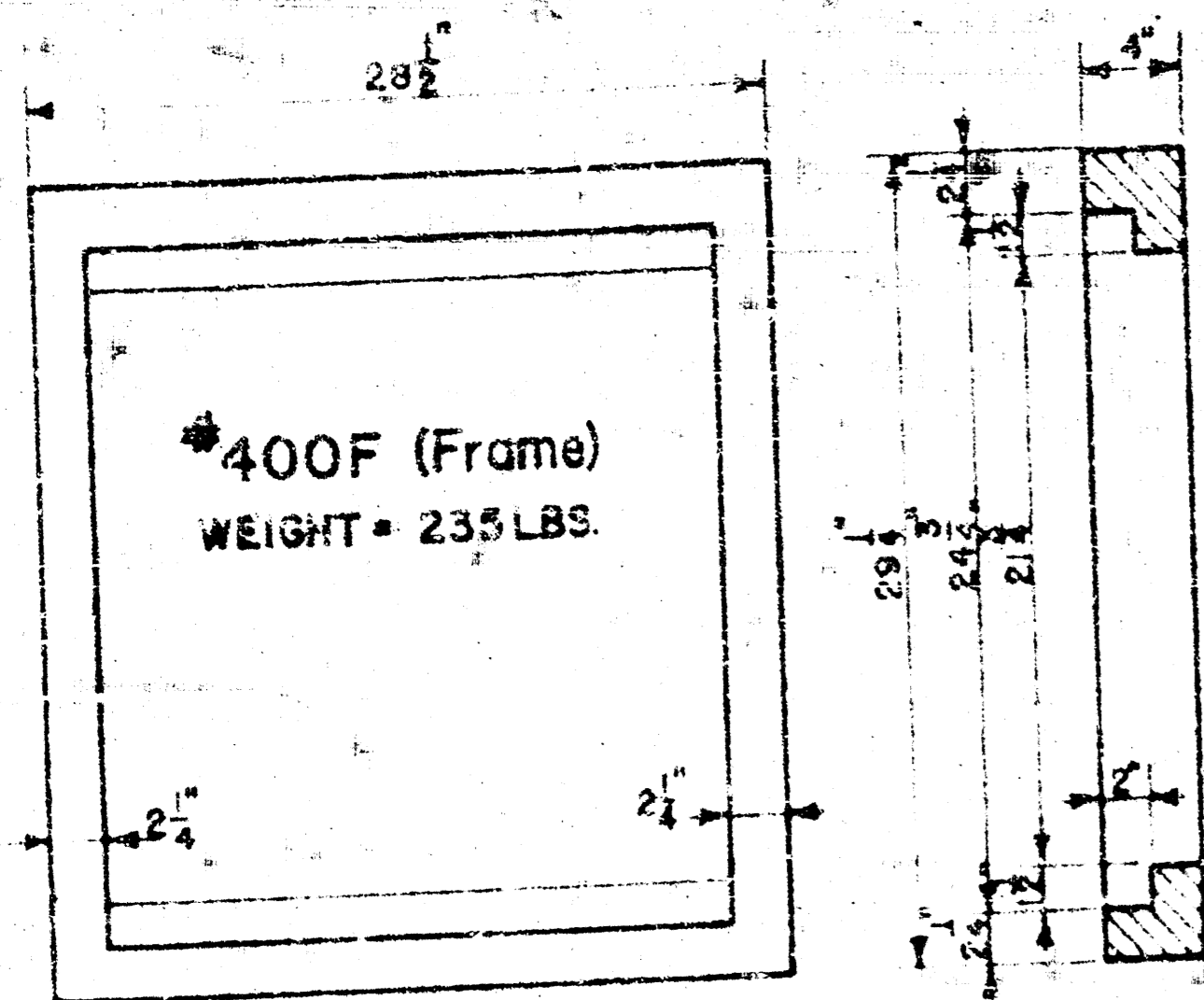
Sta 1+80.64-74' Install Std 18" End Section

Sta 2+59.64-74' Const Std 2'x4' Catch Basin



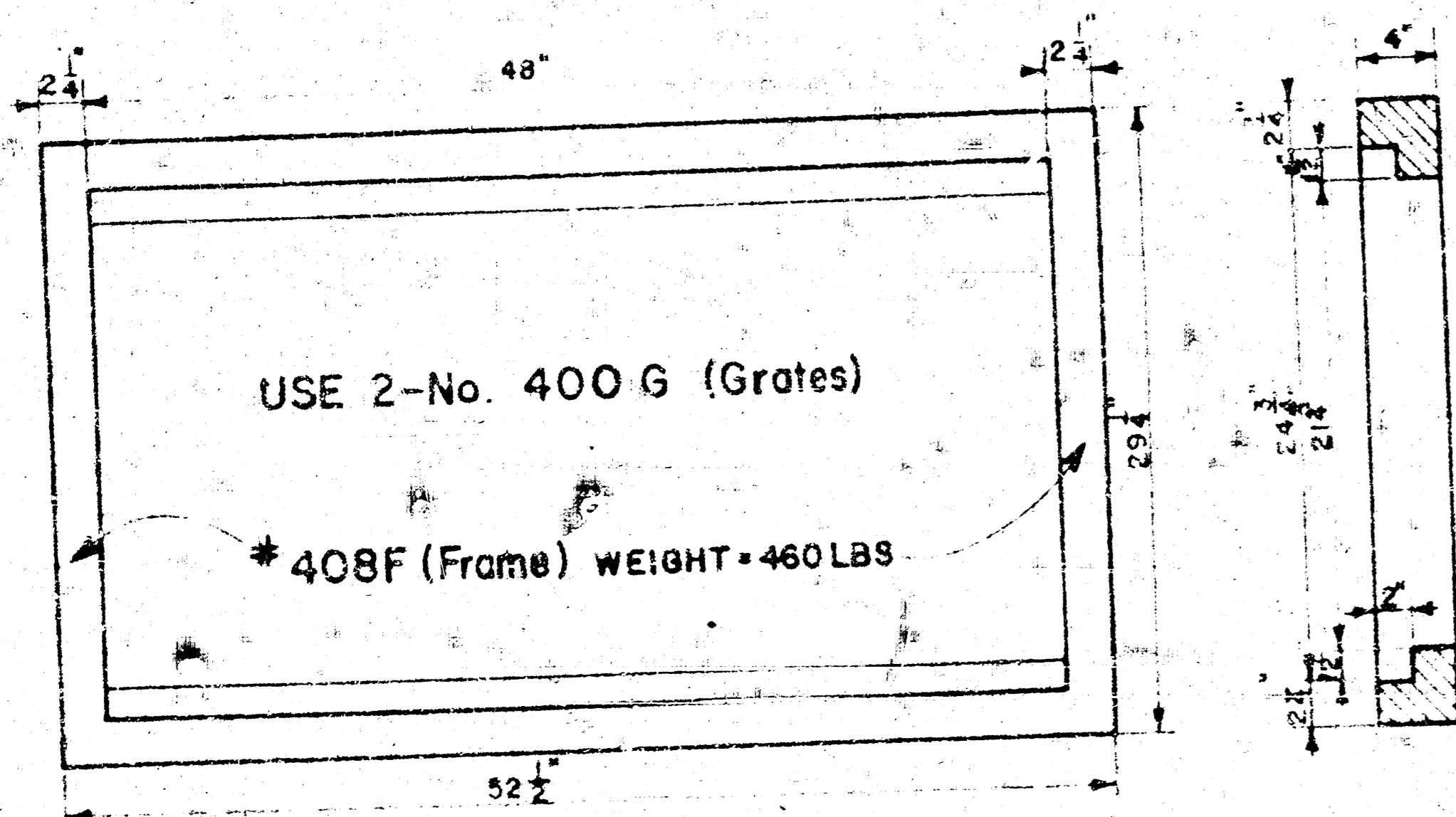
Brookings By-Pass End Addition  
City of Wichita, Kansas  
R.W. Linn, City Engineer  
Storm Water Sewer Project No.

NOTE: Grates shall be imprinted on the top surface with "CITY OF WICHITA" using letters of least 1" in height. Other marking methods may be used only if approved by the engineer.

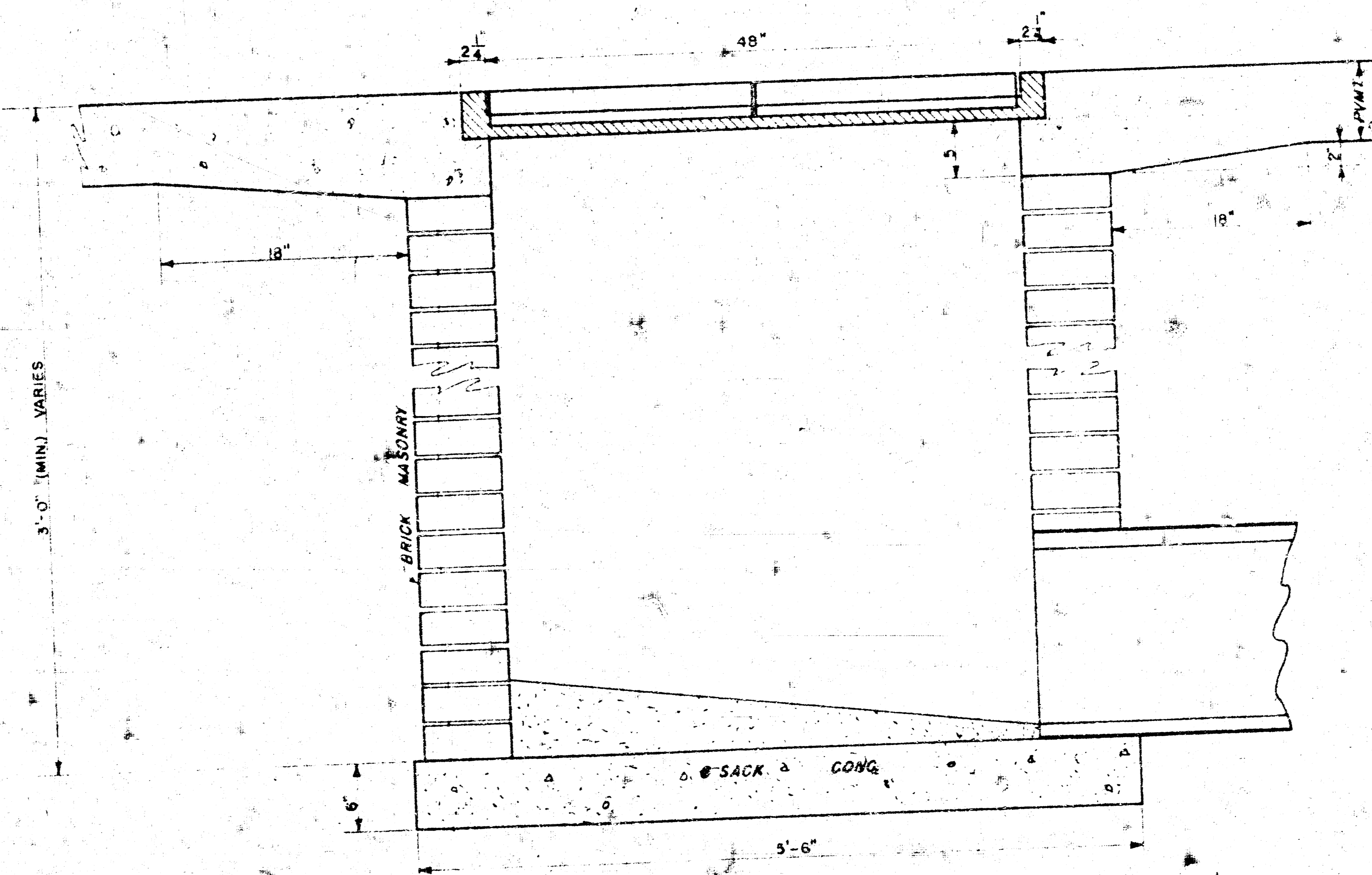
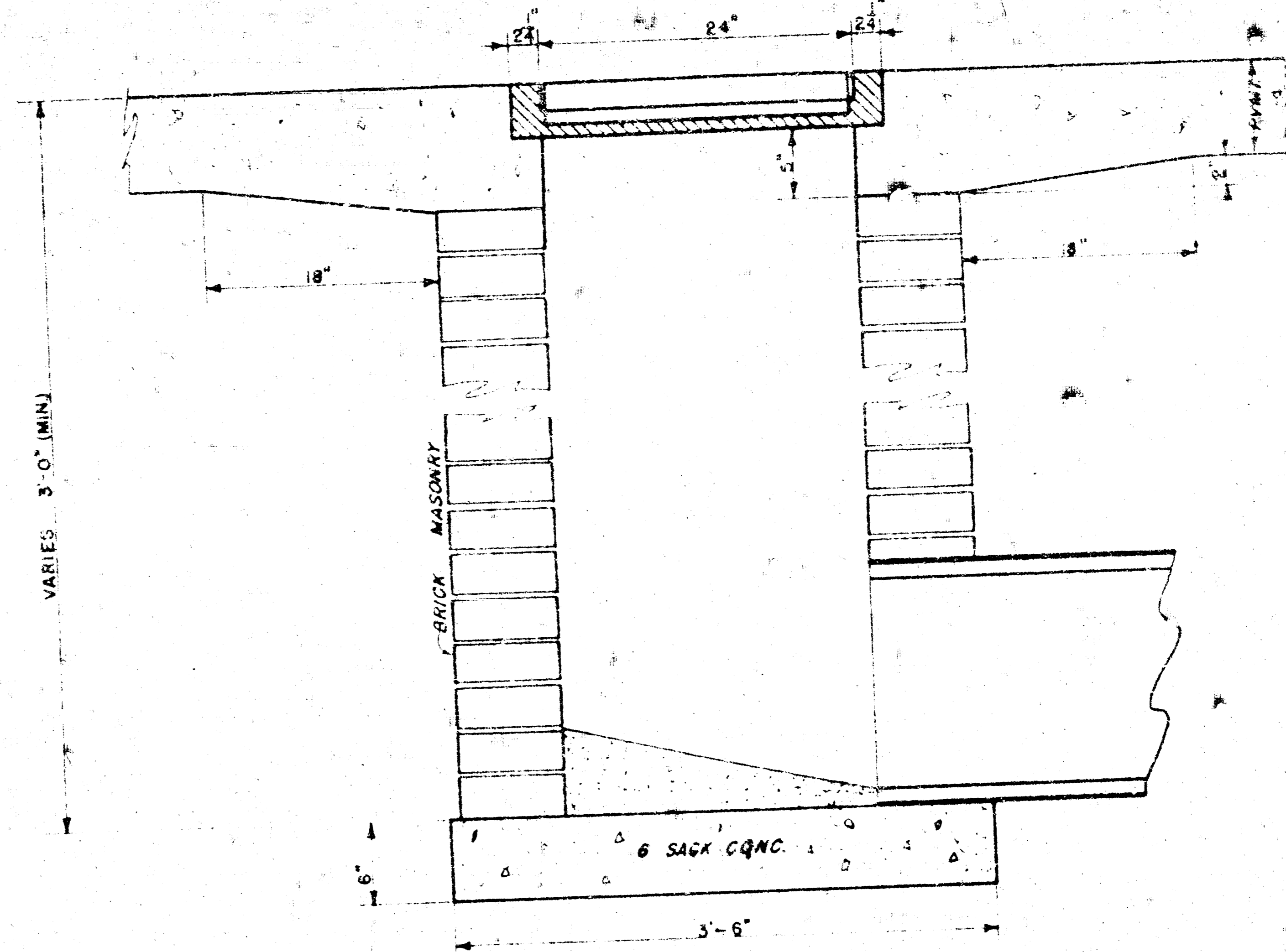
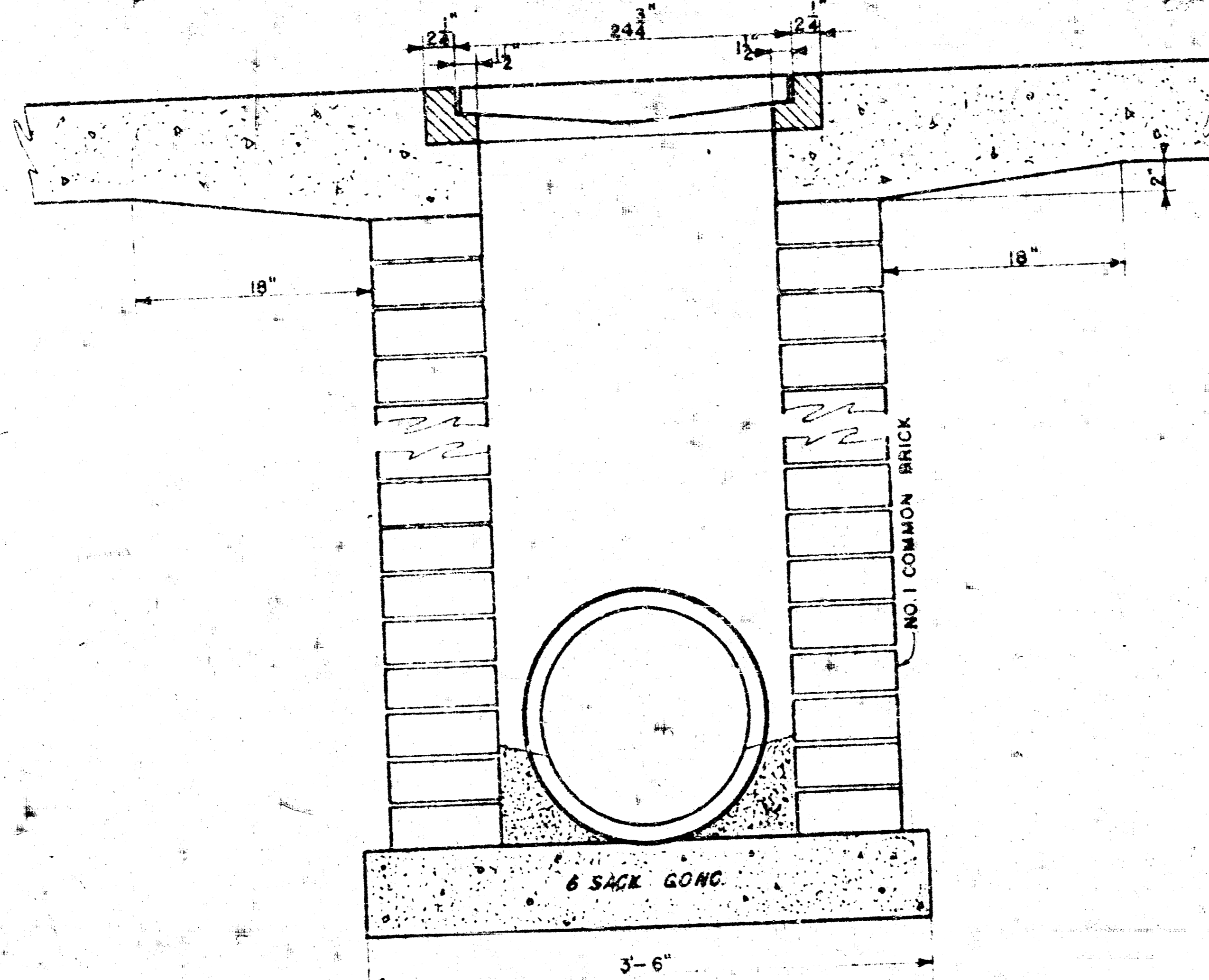


#400G (Grate)  
WEIGHT = 235 LBS

24"x24" Frame & Grate Detail



Double 24"x24" Frame Detail



**DROP INLET DETAILS**

R. W. Linn = City Engineer  
 City of Wichita, Kansas  
 Project  
 Project No.  
 Date  
 Scale: 1-1/2" = 1'-0"