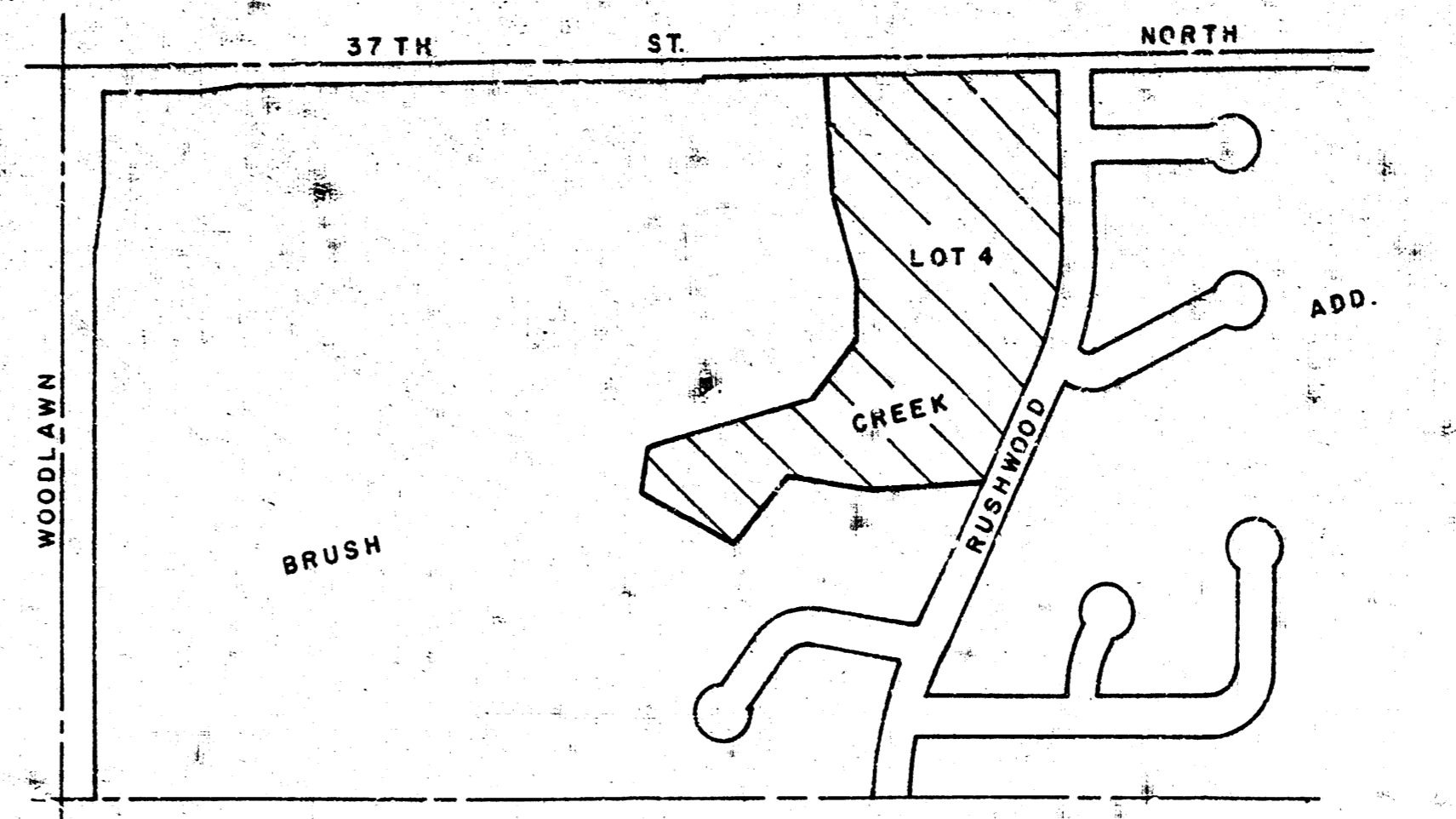
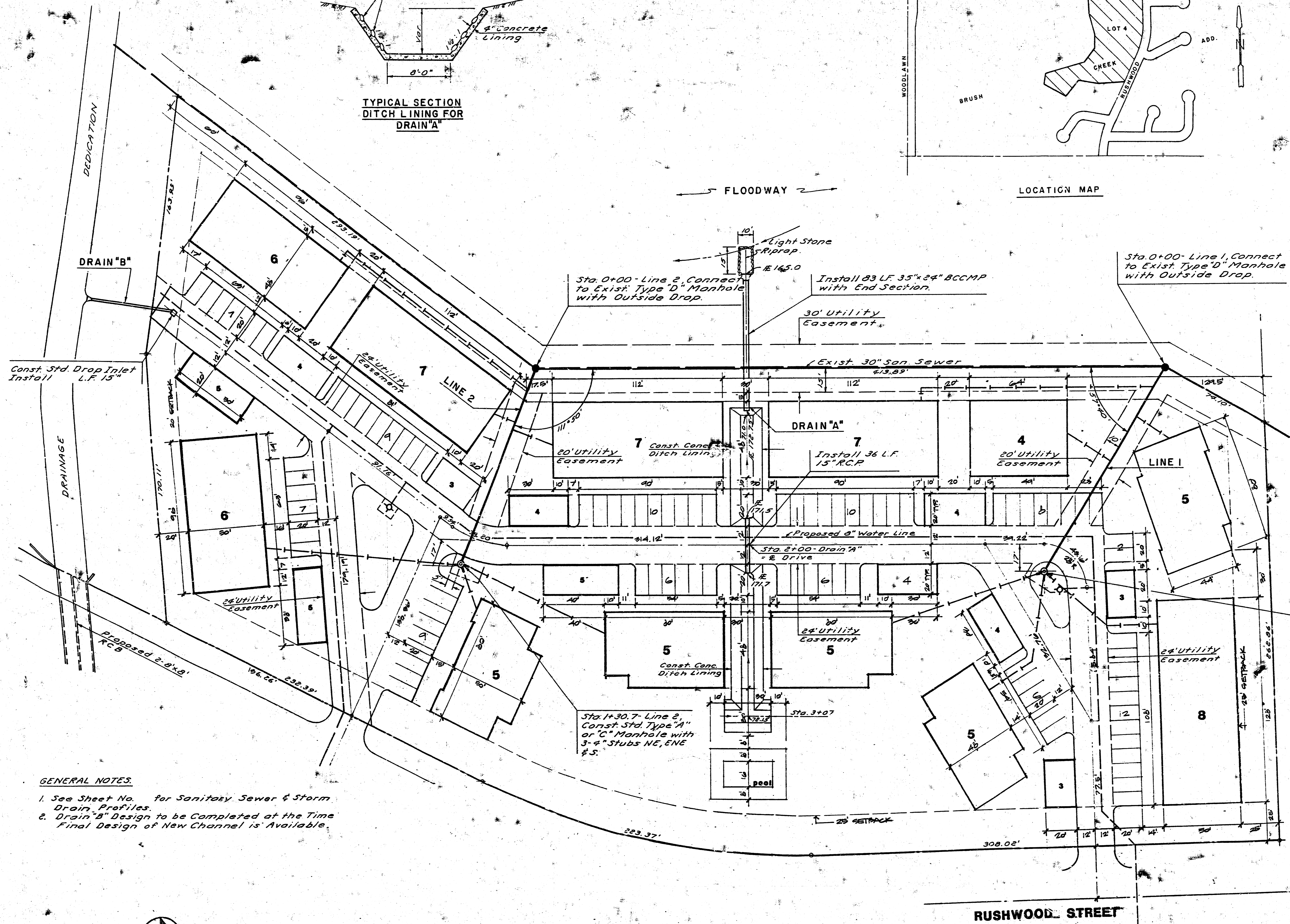


TYPICAL SECTION
DITCH LINING FOR
DRAIN "A"



LOCATION MAP



FLOODWAY

APPROVED AS NOTED
By CITY ENGINEER OF WICHITA
Sanitary Sewers *ERK/SLB*
Storm Sewers *ERK/SLB*
Driveway Approaches

NOTE TO CONTRACTOR
This project will be constructed under the supervision of the CITY ENGINEER and conforming to the SPECIFICATIONS of the CITY OF WICHITA. THE CONTRACTOR will prepay the City of Wichita for all costs of inspection.

Sta. 1+30.3 - Line 1, Const. Std. Type "A" or "C" Manhole with 3'-4" Stubs NE, E & SE

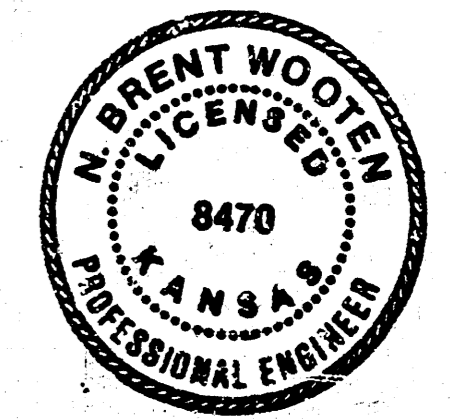
GENERAL NOTES
1. See Sheet No. for Sanitary Sewer & Storm Drain Profiles.
2. Drain "B" Design to be Completed at the Time Final Design of New Channel is Available.

SITE PLAN
Scale: 1" = 20'-0"

PRIVATE SANITARY SEWER EXTENSION & STORM SEWER TO SERVE LOT 4, BLOCK 1, BRUSH CREEK ADDITION
CITY PROJ. NO. 468-75-245-80000-000-000-008

BAUGHMAN COMPANY, P.A.
SURVEYING & ENGINEERING
314/752-7271 • 330 LAURA • WICHITA, KANSAS 67211

Kruse Architects and Consultants
1337 N. Meridian Suite 8
Wichita, KS. 67203 942-0987



printed/issued	revisions	date drawn
	<i>ERK/SLB</i>	1/2
		01

FILMED FROM THE BEST

