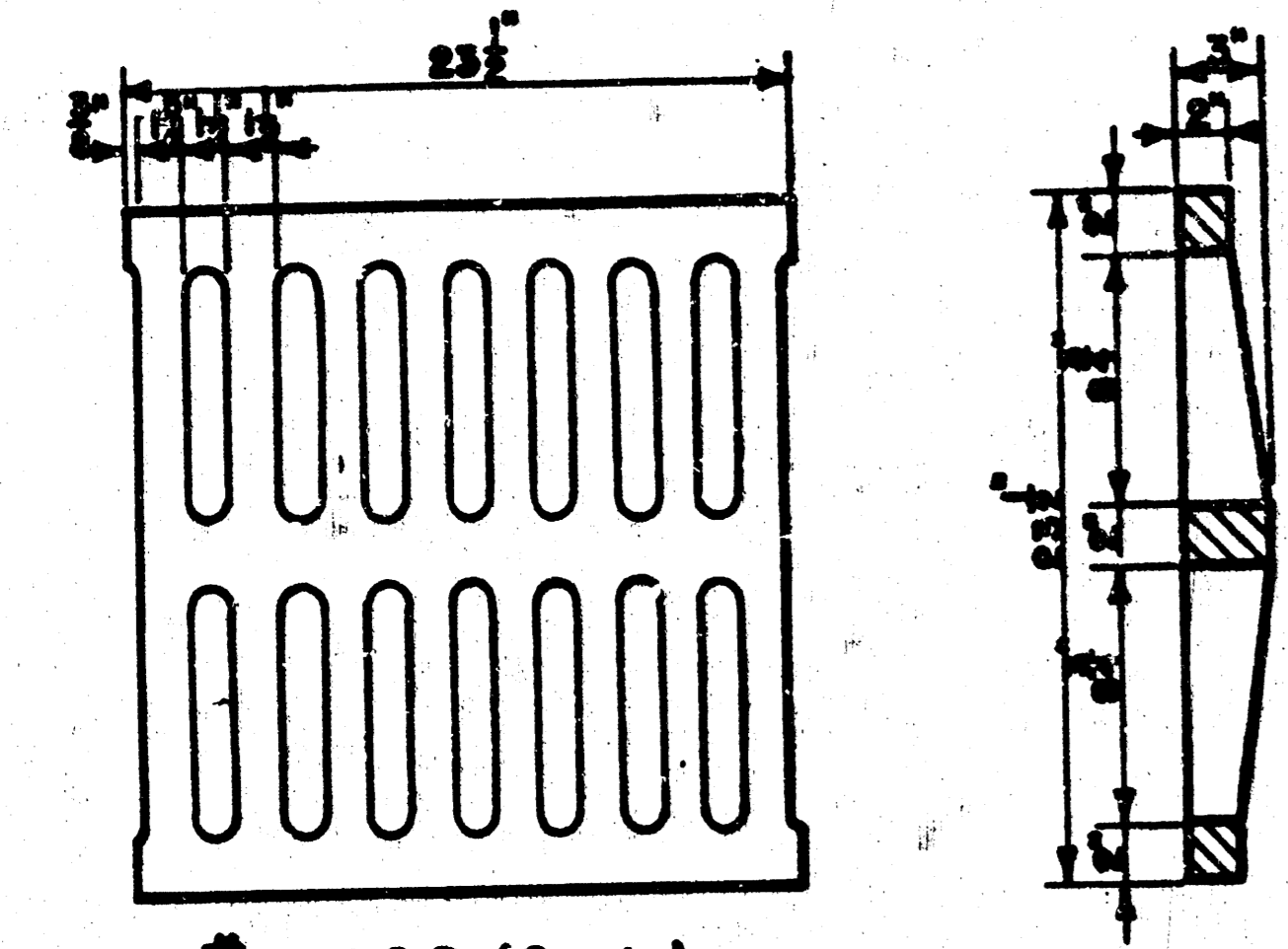
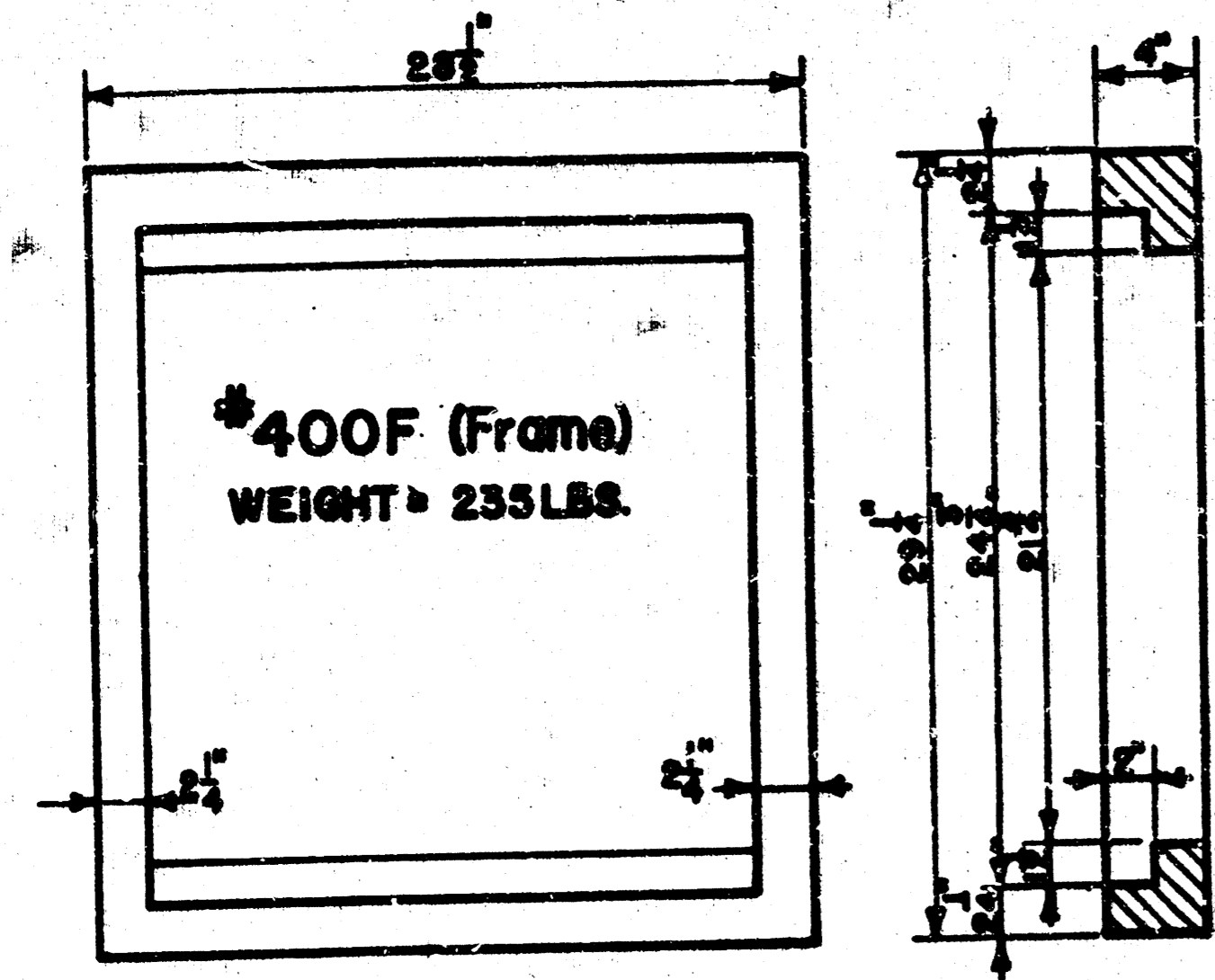
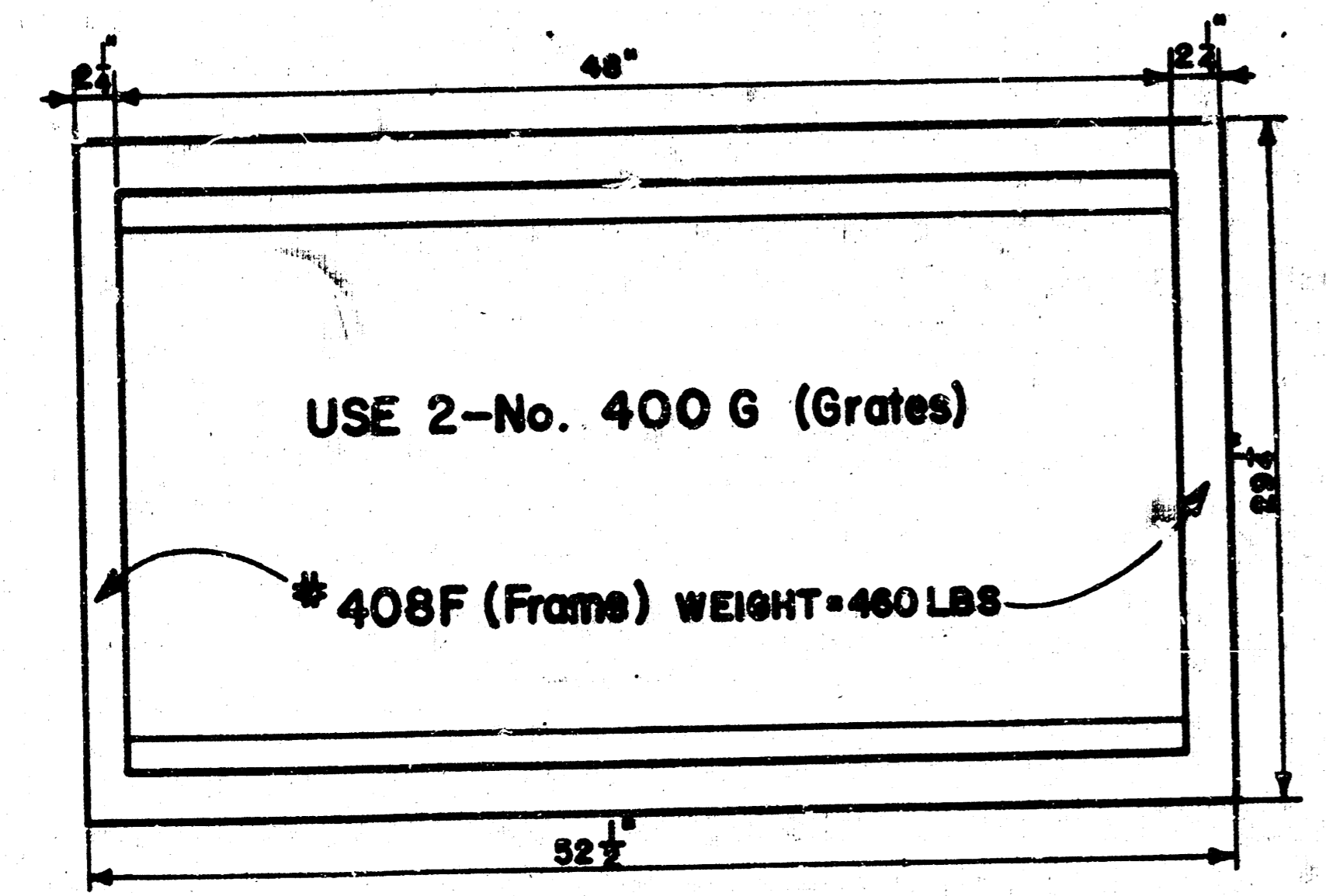




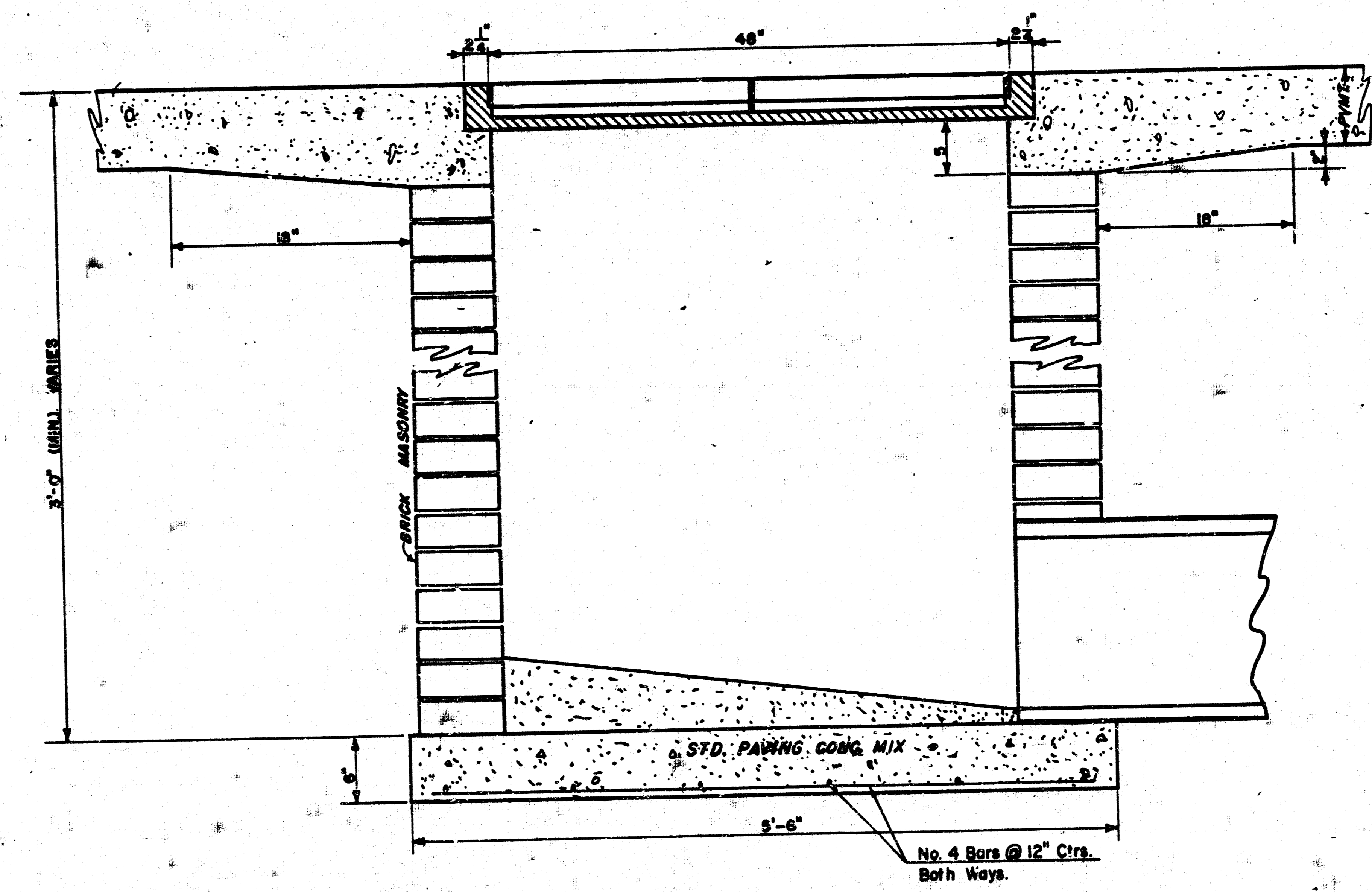
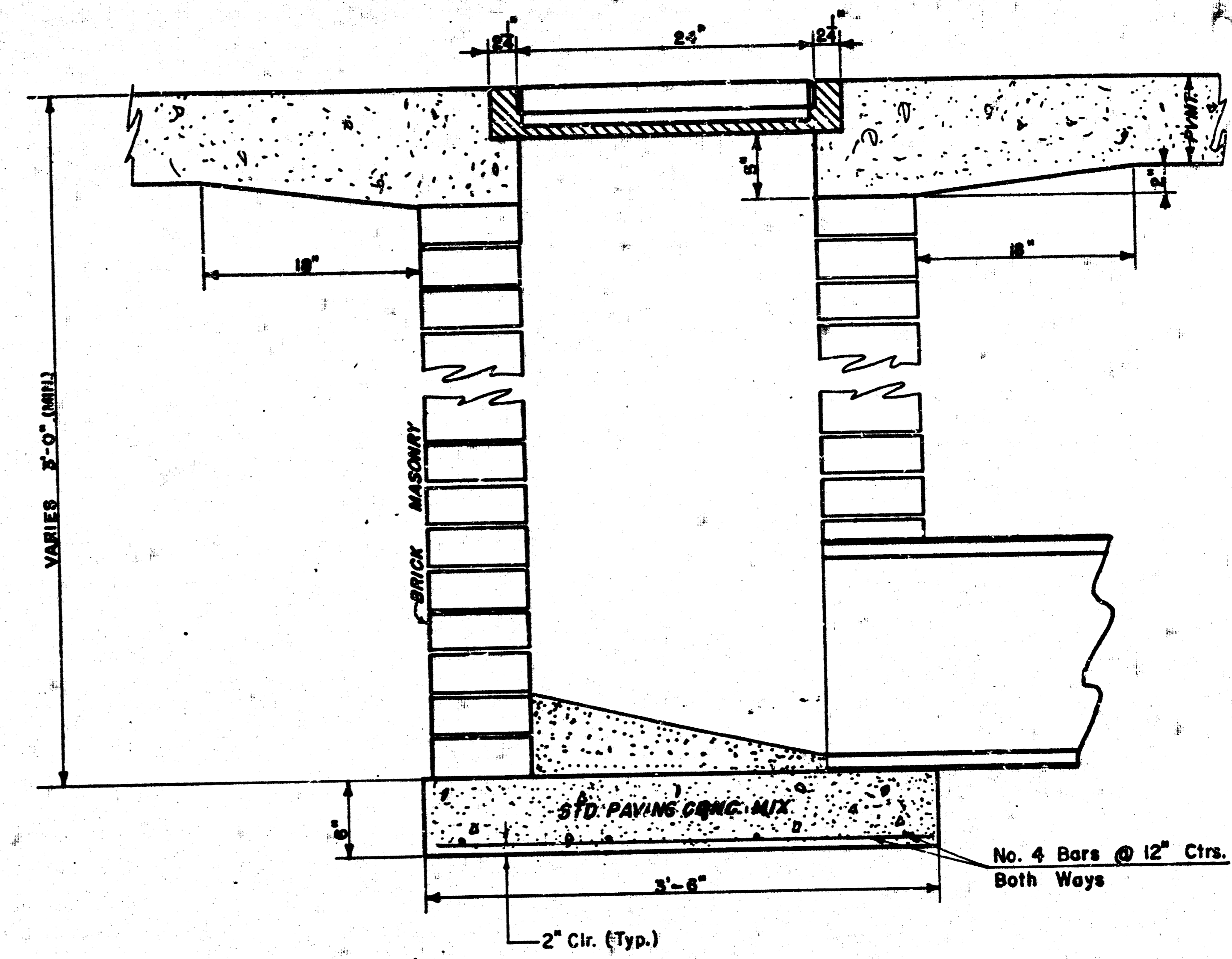
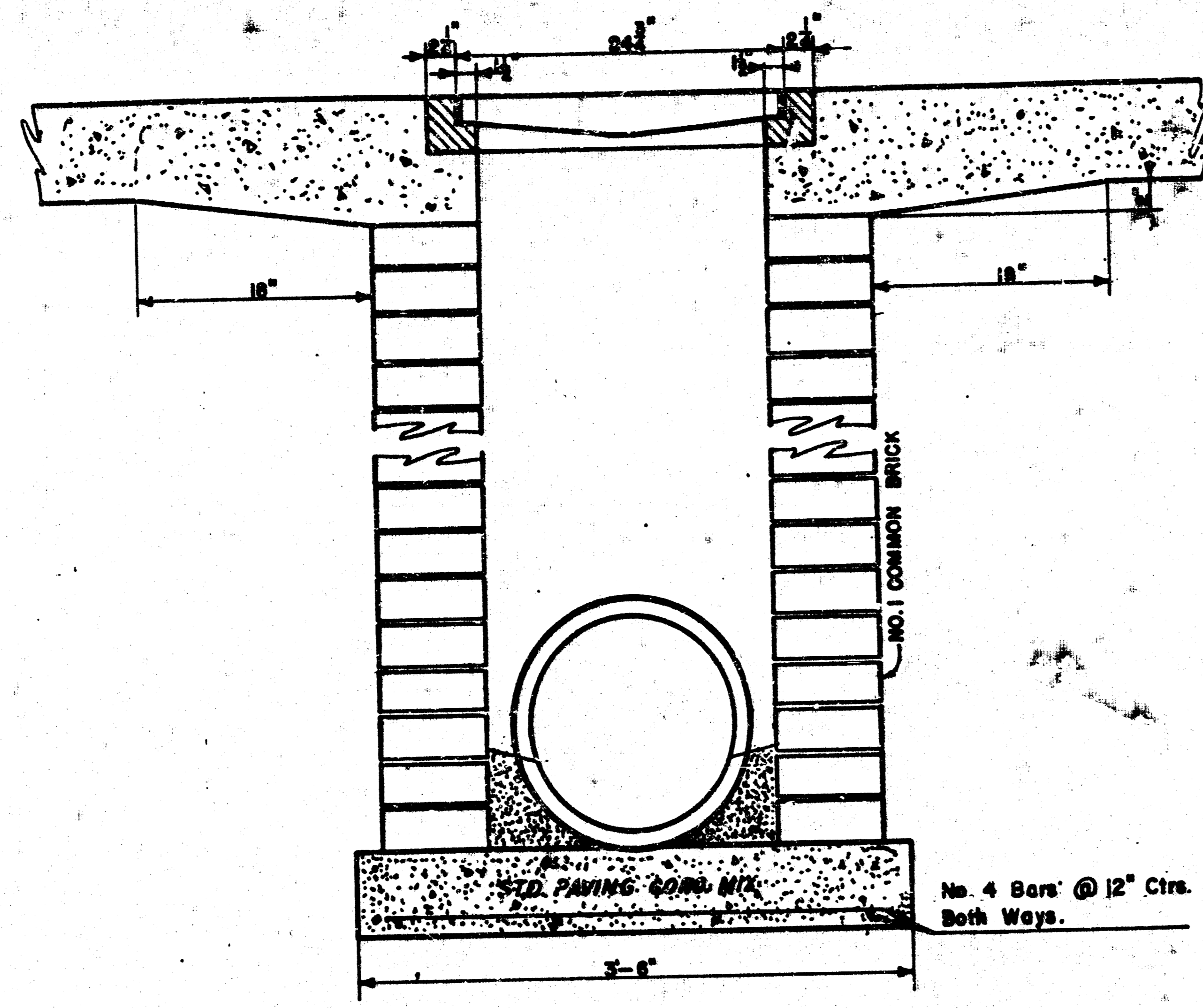
NOTE: Grates shall be imprinted on the top surface with "CITY OF WICHITA" using letters at least 1" in height. Other marking methods may be used only if approved by the engineer.



24"x24" Frame & Grate Detail



Double 24"x24" Frame Detail



**DROP INLET DETAILS**

M.E. Lindebak, City Engineer  
City of Wichita, Kansas

Project  
Project No. 530  
Date: 11 5 3 0 12/2  
Scale: 1-1/2" = 1'-0" Sheet 2 of 2

FILMED FROM THE BEST AVAILABLE COPY