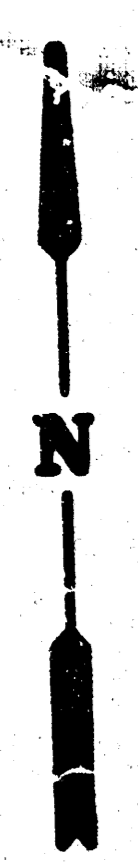


SCALE 1" = 100'



CENTRAL AVENUE PLAZA DRAINAGE IMPROVEMENTS

CITY OF WICHITA

M.E. LINDEBAK-CITY ENGINEER

PROJECT NO. 472-76-245-80000-000-000-008

DATE: AUGUST 1983

TABLE OF CONTENTS

COVER SHEET-----	SHEET 1
DRAINAGE IMPROVEMENTS-----	SHEET 2
PLAN -PROFILE-----	SHEET 3
CONTROL STRUCTURE DETAILS-----	SHEET 4
CHANNEL CROSS SECTIONS-----	SHEET 5-6
DOUBLE 10'x3' R.C.B.C.-----	SHEET 7

**THIS PROJECT SHALL NOT BE STARTED
UNTIL IT HAS BEEN APPROVED BY THE
STATE BOARD OF WATER RESOURCES.**

THE CONTRACTOR WILL PROVIDE ALL CONSTRUCTION
STARTING ON THIS PROJECT.

THE CONTRACTOR SHALL BE RESPONSIBLE FOR
PRESERVING PROPERTY IRONS. THE CONTRACTOR
SHALL BE REQUIRED TO REESTABLISH ANY PROPERTY
IRONS WHICH ARE DAMAGED OR DESTROYED BY HIS
CONSTRUCTION OPERATIONS. SUCH IRONS SHALL
BE RE-ESTABLISHED BY A LICENCED LAND
SURVEYOR OR A LICENCED PROFESSIONAL
ENGINEER IN ACCORDANCE WITH STATE LAWS.



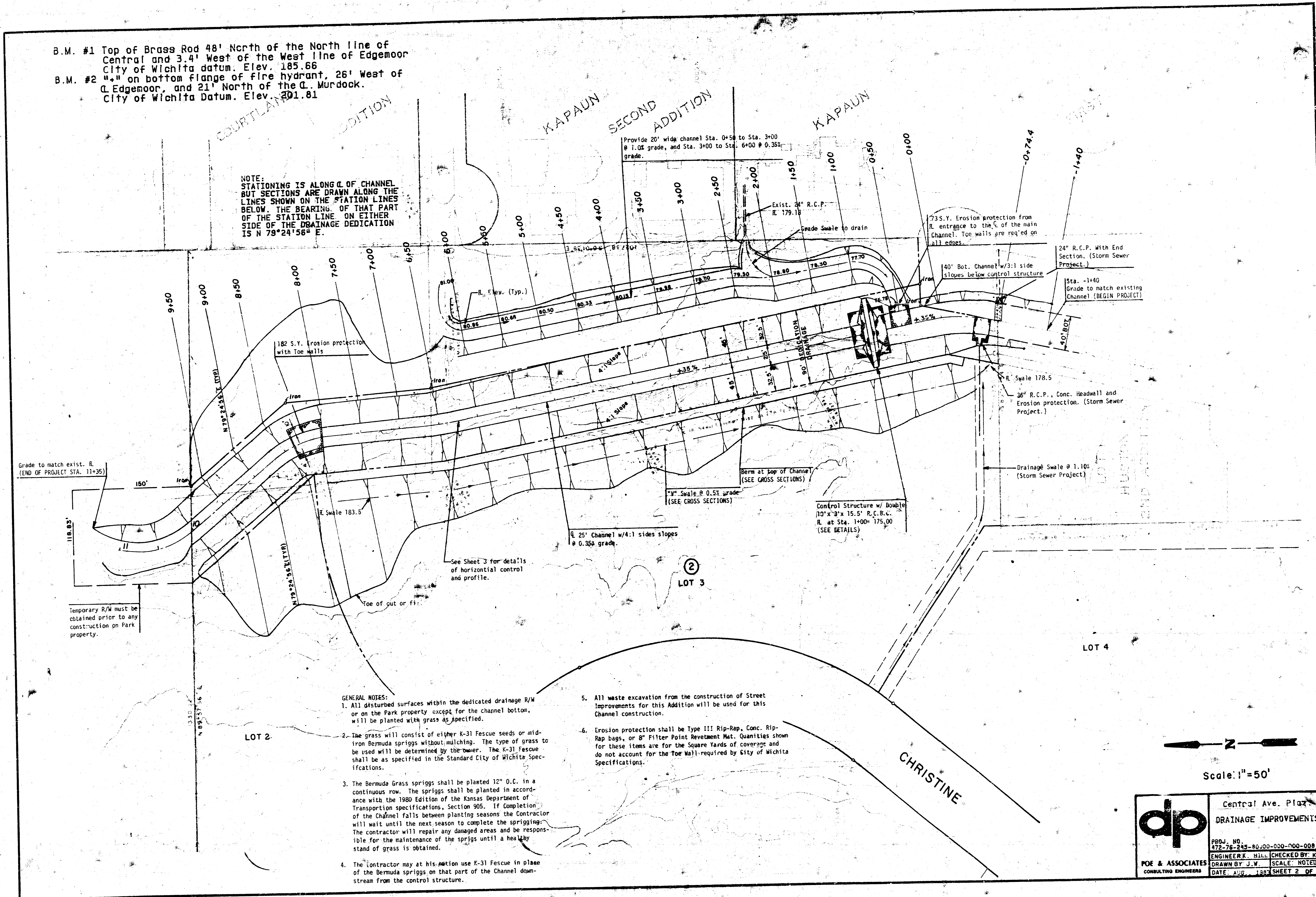
dp POE & ASSOCIATES OF KANSAS, INC.
CONSULTING ENGINEERS

SHEET 1 OF 7

**FILMED FROM THE BEST
AVAILABLE COPY....**

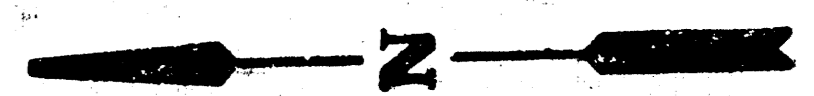
B.M. #1 Top of Brass Rod 48' North of the North line of Central and 3.4' West of the West line of Edgemoor City of Wichita datum. Elev. 185.66
 B.M. #2 " on bottom flange of fire hydrant, 26' West of Edgemoor, and 21' North of the C. Murdock. City of Wichita Datum. Elev. 201.81

NOTE:
 STATIONING IS ALONG C.D. OF CHANNEL BUT SECTIONS ARE DRAWN ALONG THE LINES SHOWN ON THE STATION LINES BELOW. THE BEARING OF THAT PART OF THE STATION LINE ON EITHER SIDE OF THE DRAINAGE DEDICATION IS N 79°24'56" E.



GENERAL NOTES:

- All disturbed surfaces within the dedicated drainage R/W or on the Park property except for the channel bottom, will be planted with grass as specified.
- The grass will consist of either K-31 Fescue seeds or mid-iron Bermuda spriggs without mulching. The type of grass to be used will be determined by the owner. The K-31 Fescue shall be as specified in the Standard City of Wichita Specifications.
- The Bermuda Grass spriggs shall be planted 12" O.C. in a continuous row. The spriggs shall be planted in accordance with the 1980 Edition of the Kansas Department of Transportation specifications, Section 905. If completion of the Channel falls between planting seasons the Contractor will wait until the next season to complete the sprigging. The contractor will repair any damaged areas and be responsible for the maintenance of the sprigs until a healthy stand of grass is obtained.
- The contractor may at his option use K-31 Fescue in place of the Bermuda spriggs on that part of the Channel downstream from the control structure.
- All waste excavation from the construction of Street Improvements for this Addition will be used for this Channel construction.
- Erosion protection shall be Type III Rip-Rap, Conc. Rip-Rap bags, or 8" Filter Point Revetment Mat. Quantities shown for these items are for the Square Yards of coverage and do not account for the Toe Wall required by City of Wichita Specifications.



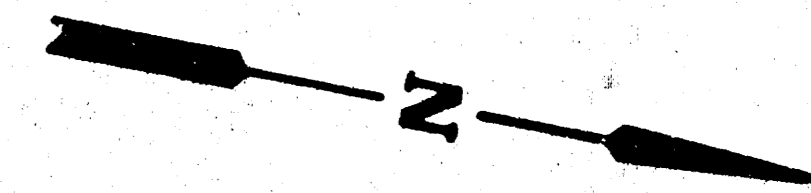
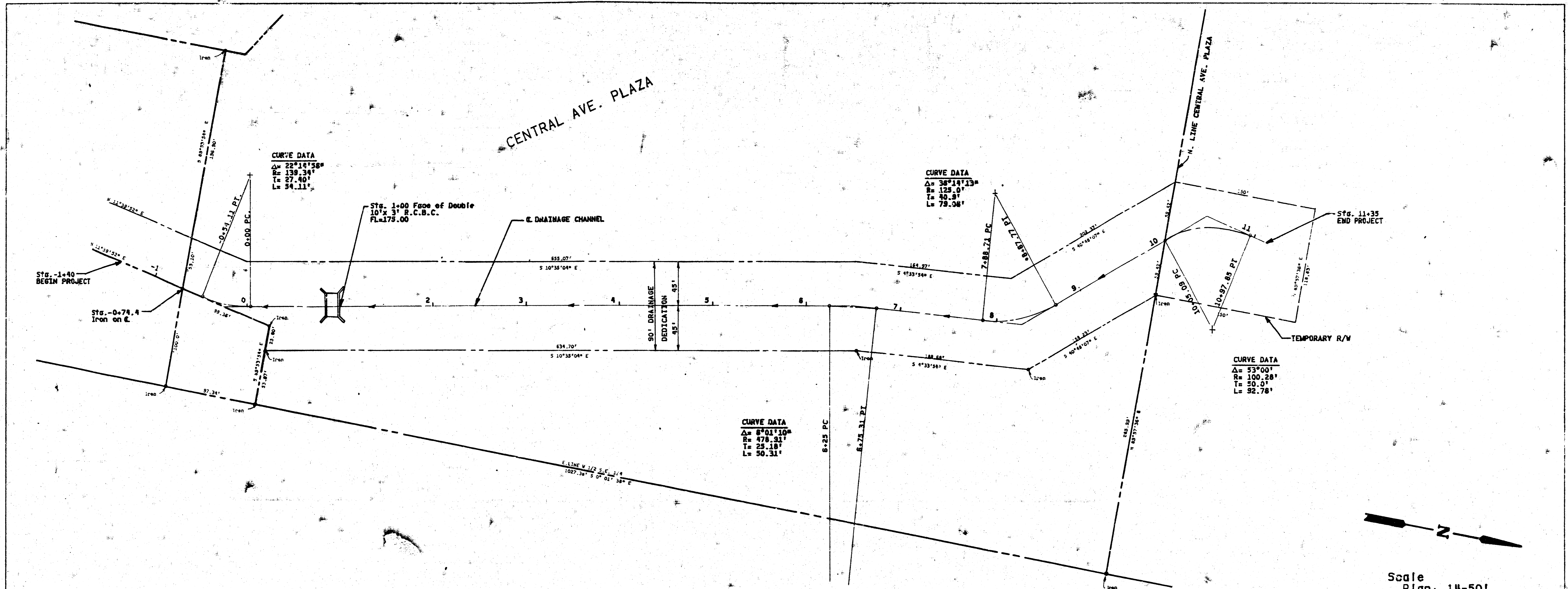
Scale: 1"=50'

	Central Ave. Plaza	
	DRAINAGE IMPROVEMENTS	
	PROJ. NO. 472-76-245-80,00-000-000	CHECKED BY: K.H.
	ENGINEER: HILL	SCALE: NOTED
POE & ASSOCIATES CONSULTING ENGINEERS	DRAWN BY: J.W.	DATE: AUG. 1987 SHEET 2 OF 7

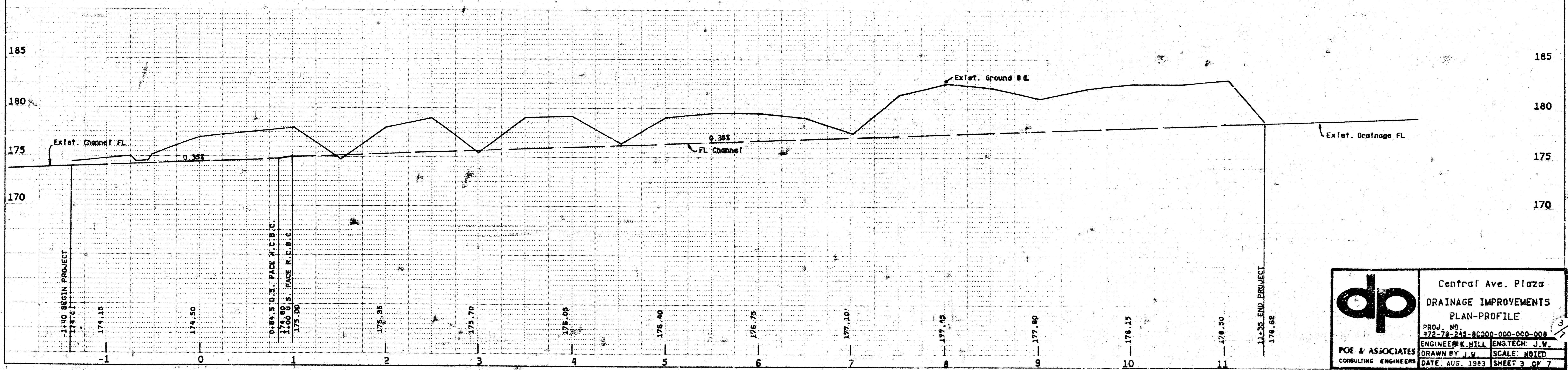
FILMED FROM THE BEST AVAILABLE COPY

DATE	
BY	
SURVEYED	
GRADES CHECKED	
ALIGNMENT CHECKED	
RT. OF WAY CHECKED	
NO. BOOK	
NO.	

DATE	
BY	
SURVEYED	
GRADES CHECKED	
STRUCTURE NOTATION OK'D	
NO. BOOK	
NO.	



Scale
 Plan: 1"=50'
 Profile: 1"=50'
 Horiz. 1"=50'
 Vert. 1"=5'



dp Central Ave. Plaza
 DRAINAGE IMPROVEMENTS
 PLAN-PROFILE

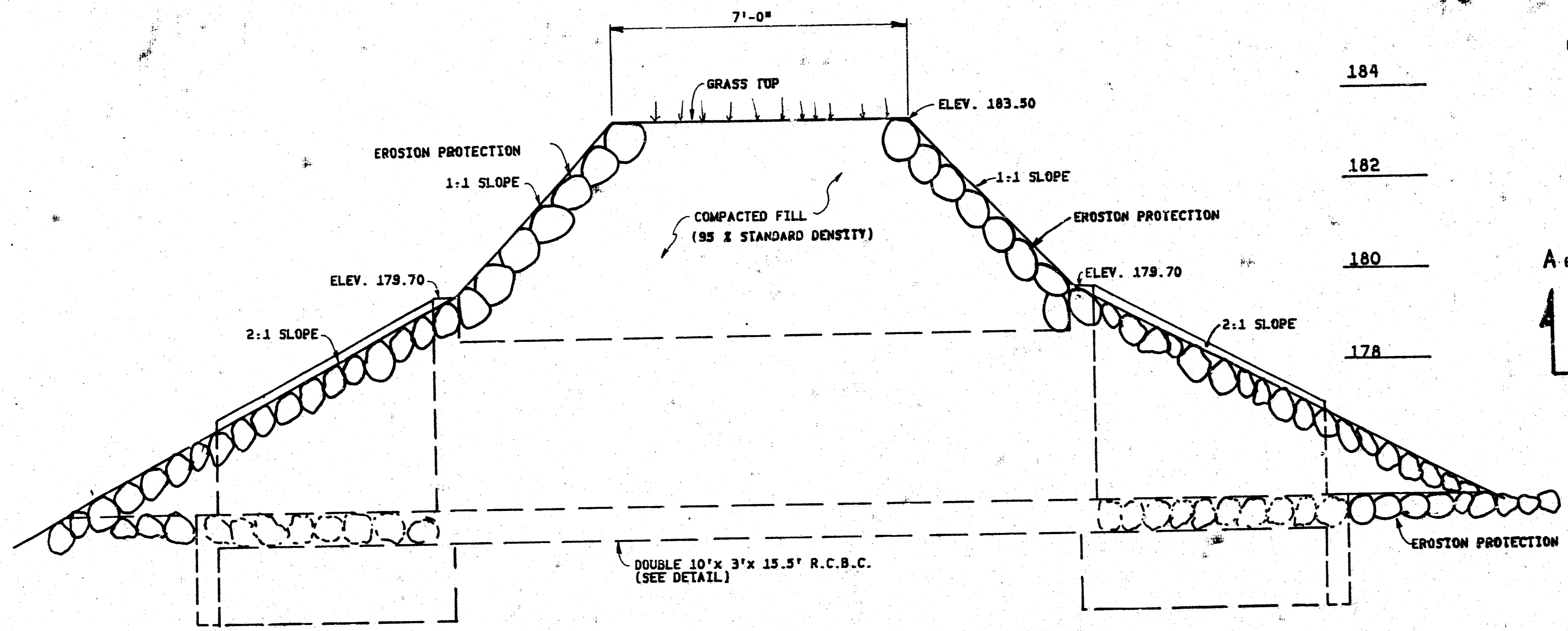
PROJ. NO.
 172-75-245-RC200-000-000

ENGINEER: K. HILL
 ENSTECH: J. W.

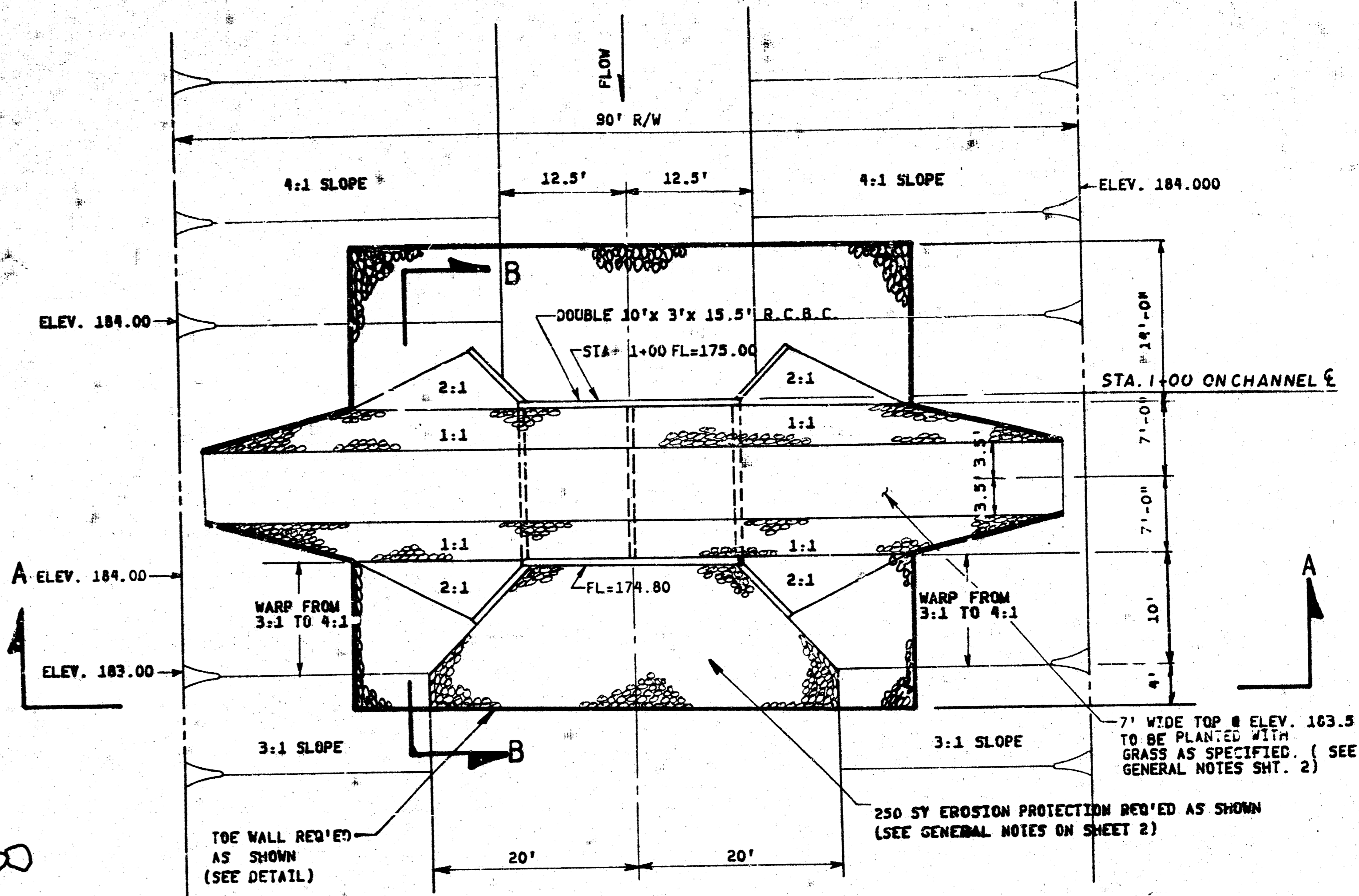
POE & ASSOCIATES
 CONSULTING ENGINEERS

DRAWN BY: J. W. SCALE: NOTED
 DATE: AUG. 1993 SHEET 3 OF 7

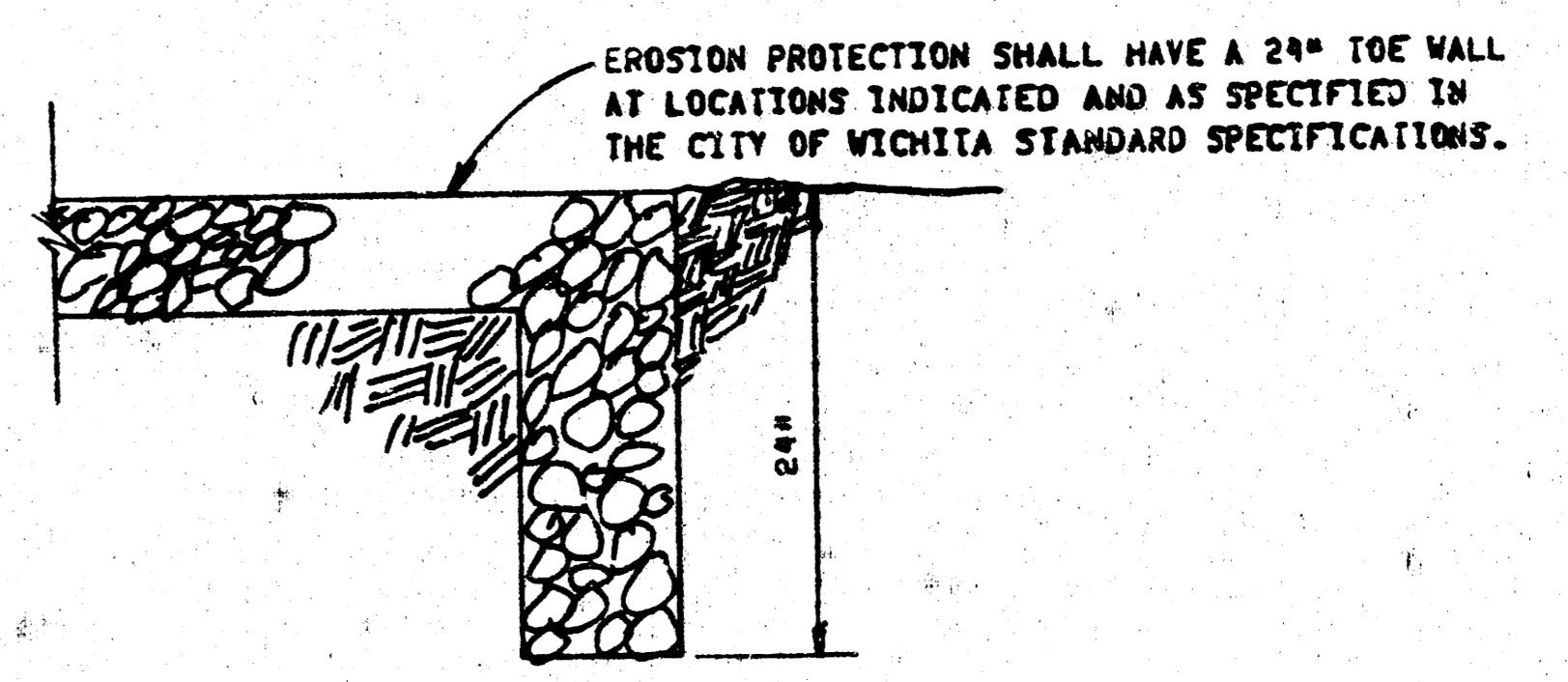
FILMED FROM THE BEST
 AVAILABLE COPY



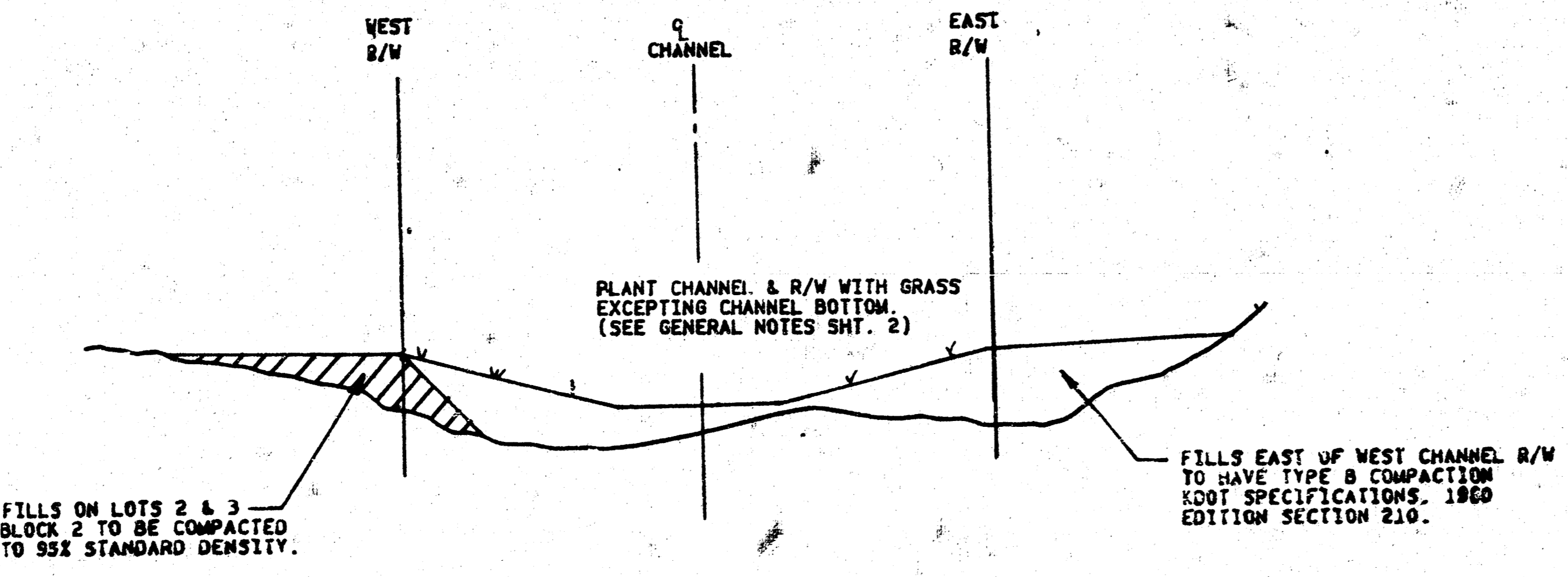
SECTION B-B
SCALE 1/2"=1'



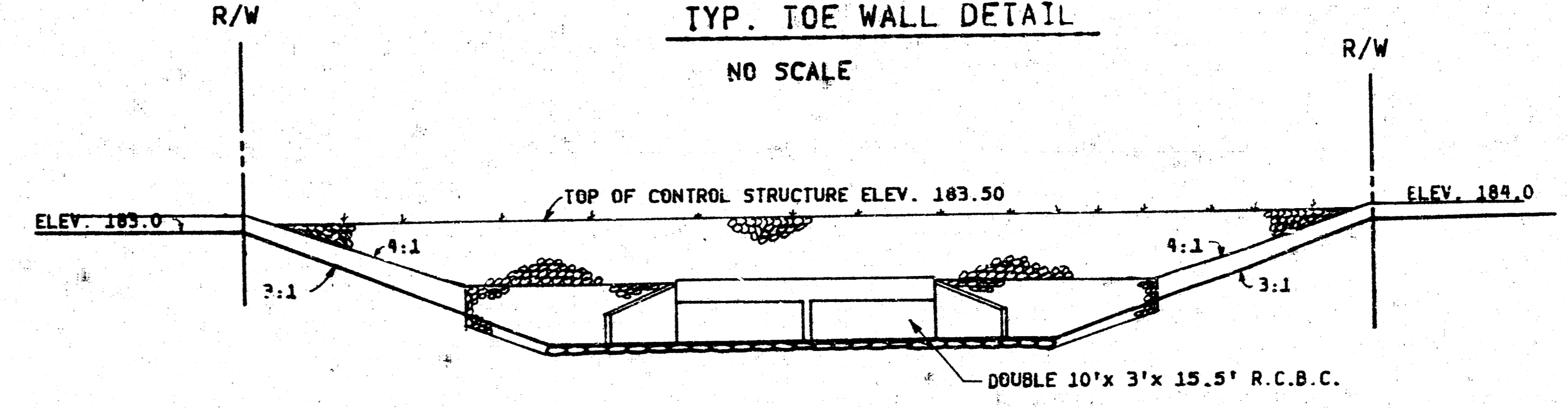
PLAN
SCALE 1"=10'



TYP. TOE WALL DETAIL
NO SCALE



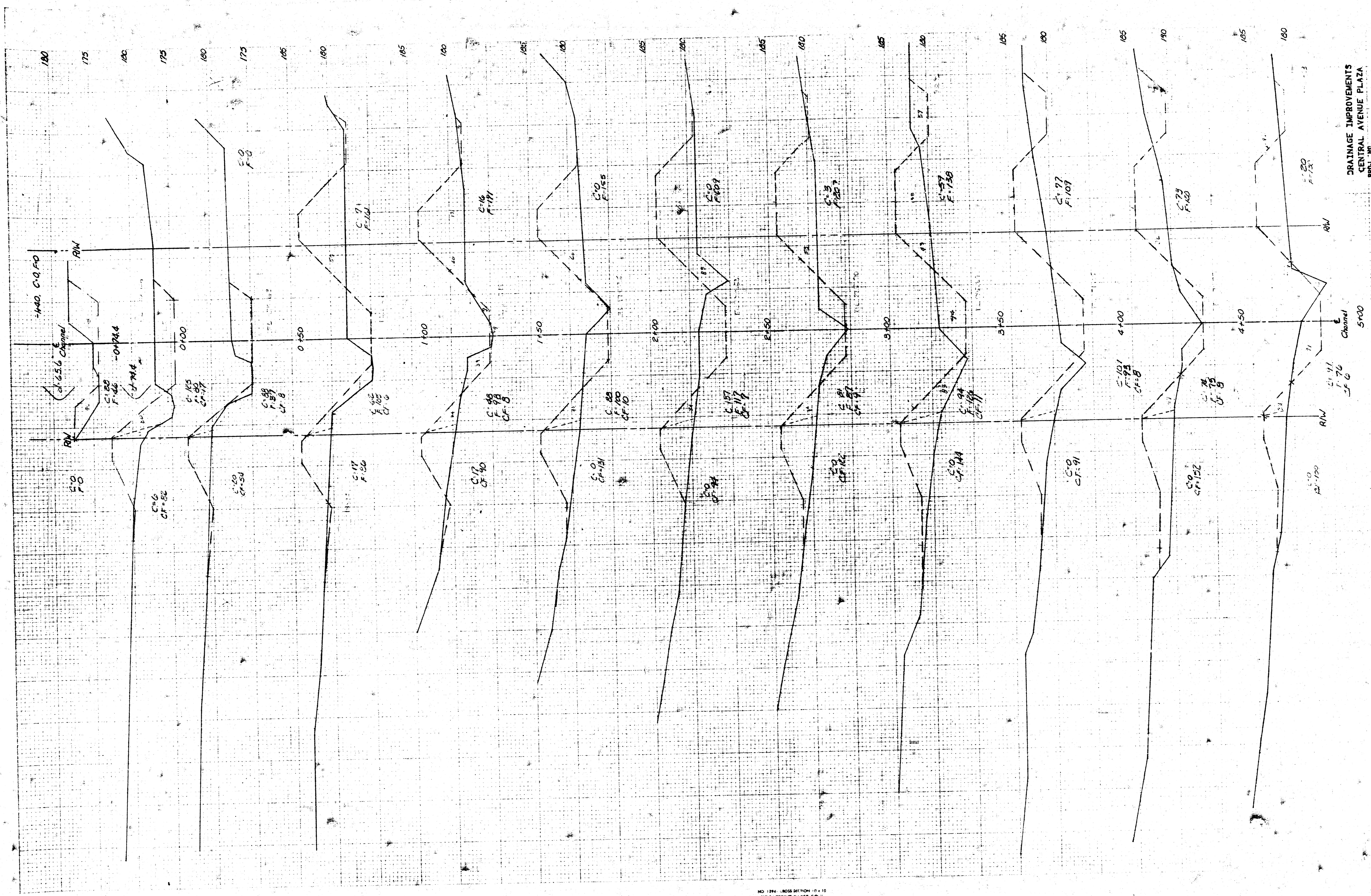
TYPICAL CHANNEL SECTION
NO SCALE



SECTION A-A
SCALE 1"=10'

	Central Ave. Plaza	
	DRAINAGE IMPROVEMENTS	
	CONTROL STRUCTURE DETAILS 4/7	
	PROJ. NO. 472-78-245-80000-003-000-008	
	ENGINEER: K. HILL CHECKED BY: K. H.	
DRAWN BY: J. W. SCALE NOTED		
DATE: AUG. 1983 SHEET 1 OF 7		

FILMED FROM THE BEST AVAILABLE COPY

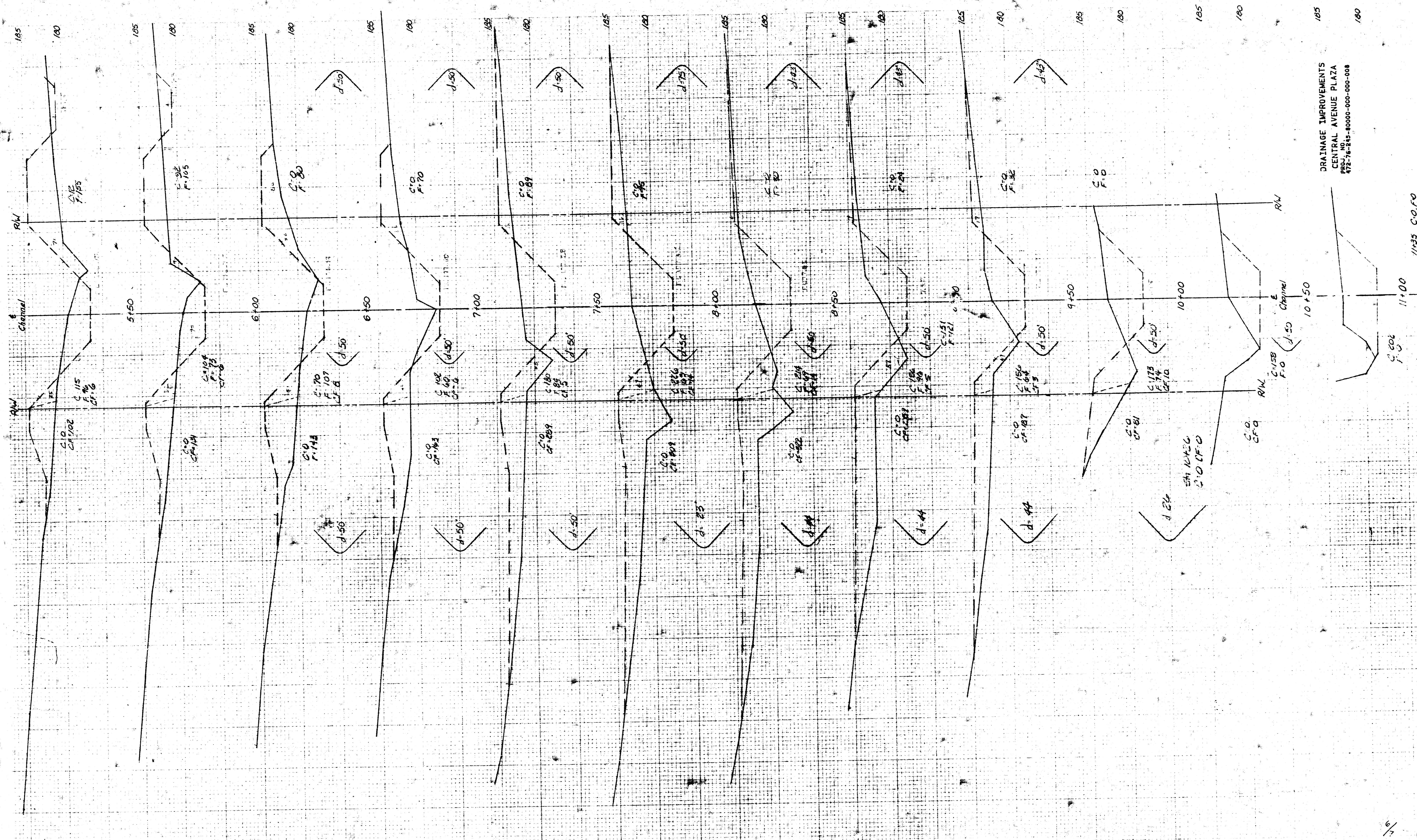


DRAINAGE IMPROVEMENTS
 CENTRAL AVENUE PLAZA
 PROJECT NO. 148-80000-000-000

NO. 1294 CROSS SECTION 10" x 10"
 CLEARPONT PAPER CO.
 MADE IN U.S.A.

5/1
 37

FILMED FROM THE BEST
 AVAILABLE COPY



DRAINAGE IMPROVEMENTS
 CENTRAL AVENUE PLAZA
 PROJ. NO. 76-245-80000-000-008

NO. 1294 - CROSS SECTION 10-10
 CLEARPRINT PAPER CO.
 MADE IN U.S.A.

FILMED FROM THE BEST
 AVAILABLE COPY....

6/7 (14)

