

Private Storm Water Sewer Project  
**CHADSWORTH 2ND ADDITION**

Project No. 490 PPS (607861)

CITY OF WICHITA, KANSAS

Michael E. Lindebak City Engineer

GENERAL NOTES

1. Contractor will be required to provide notice to utility companies a minimum of twenty-four (24) hours prior to any excavation, as follows:

Kansas One-Call 687-2470

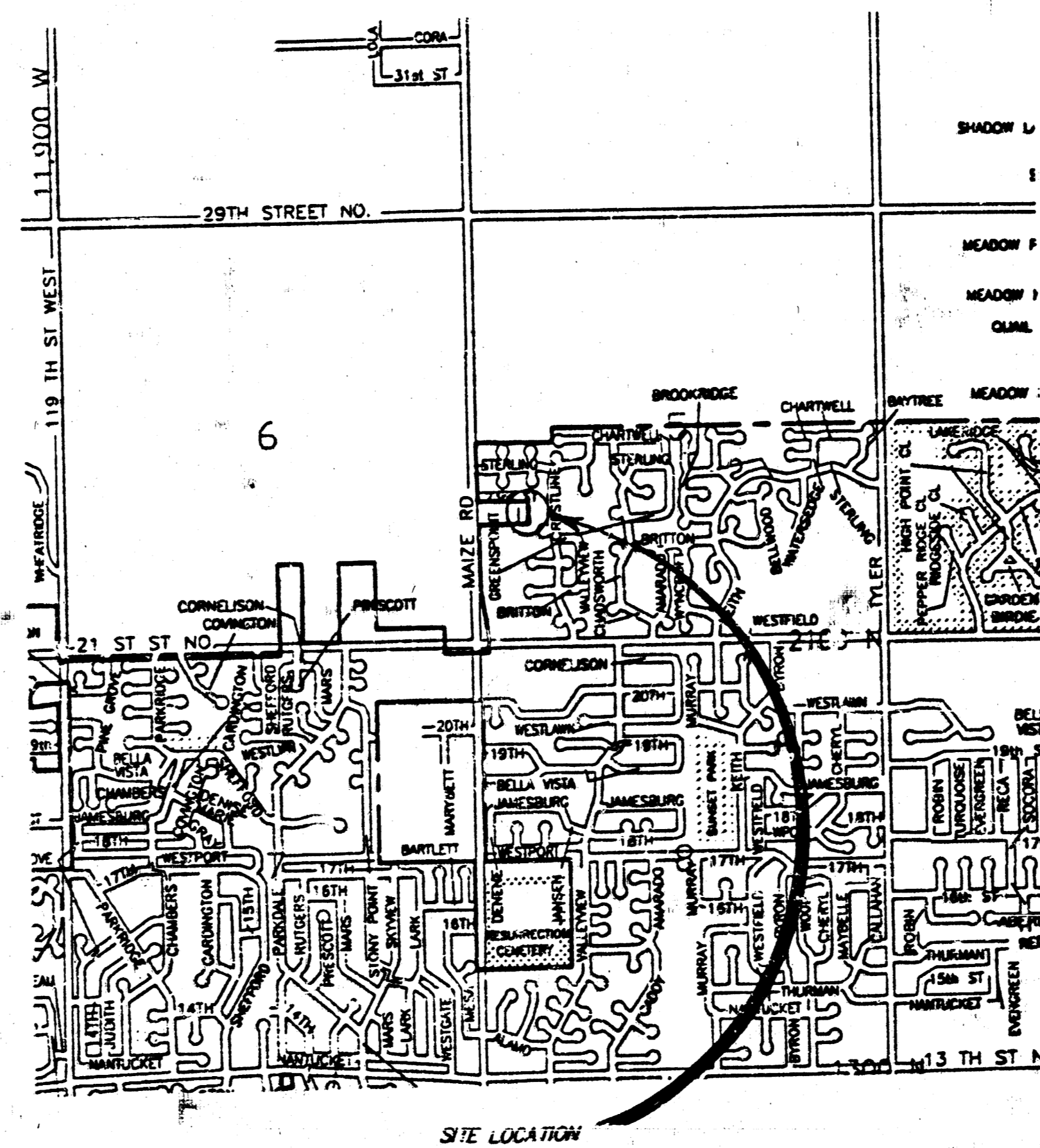
The Contractor must notify the following in case of an emergency:

|                                     |            |
|-------------------------------------|------------|
| Cablevision                         | 262-4270   |
| or                                  | 263-2061   |
| K.P.L. Gas Service Company          | 363-8650   |
| Kansas Gas & Electric Company       | 363-8650   |
| Krisa Gas Company                   | 942-8350   |
| Southwestern Bell Telephone Company | 1-571-2611 |
| City of Wichita Water Department    | 269-4308   |
| City of Wichita Sewer Maintenance   | 265-4071   |

2. The Contractor shall be responsible for preserving property irons. The Contractor will be required to re-establish any property irons which are damaged or destroyed by his construction operations. Such irons shall be re-established by a licensed land surveyor in accordance with state law.

3. Underground utility service lines and overhead utility pole lines are to be adjusted as necessary by others prior to construction unless the plans specifically call for their adjustment by the Contractor or unless the plans specifically identify a utility to be adjusted by its owner during construction. Existing utilities and their location, as shown on the plans, represent the best information obtainable for design. Location information has been obtained from the various utility companies and is either from company record drawings or company provided field locations. The Contractor will be required to work around existing utilities within the right-of-way which do not conflict with proposed construction.

4. All areas disturbed by construction operations shall be seeded with rye grass immediately following construction in that area.



APPROVED AS NOTED  
 BY CITY ENGINEER OF WICHITA  
 VRH 8/23/94  
 NOTE TO CONTRACTORS  
 Inspection and testing for this project is to be provided by a Licensed Consulting Engineering Firm under contract with the Owner/Developer. Said inspection is to be in accordance with the City of Wichita standard construction engineering practices and certified by a Licensed Professional Engineer. No work shall be performed in dedicated easements or public right-of-way by the Contractor without such inspection nor shall any work be commenced without written authorization by the City Engineer.

Booked  
 3-24-95  
 MCL

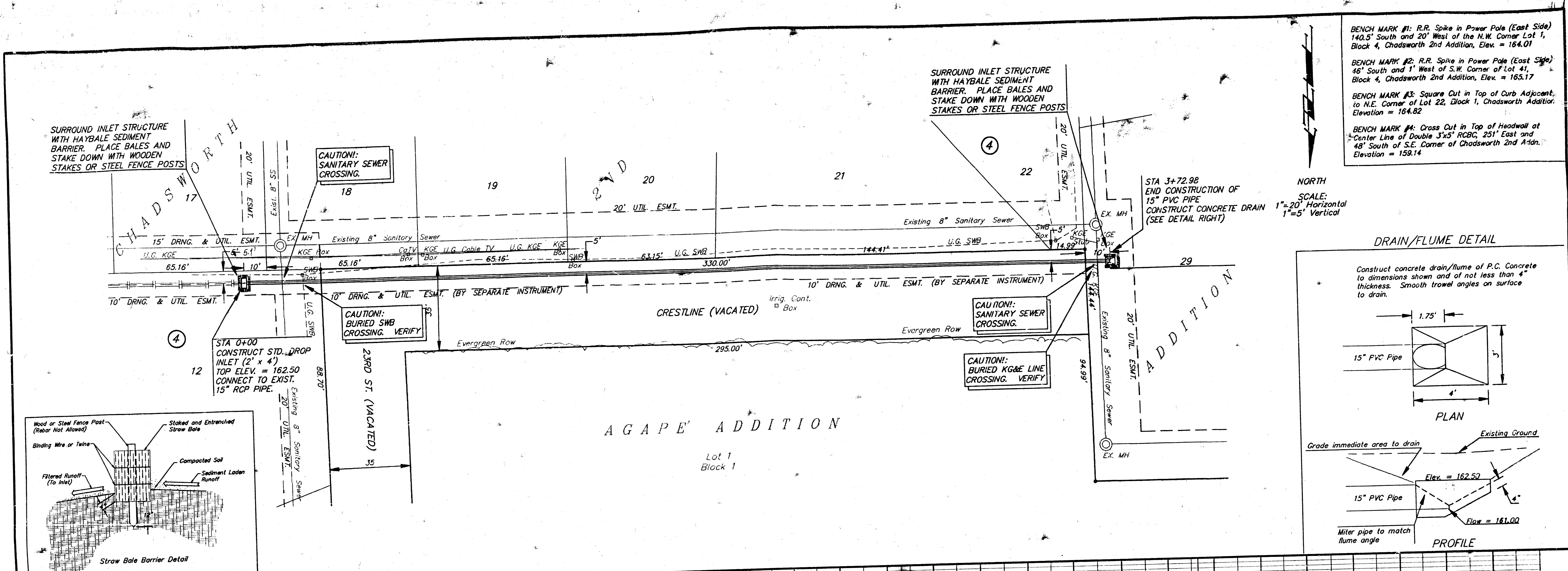
Index

1. Title Sheet - Project Notes
2. Storm Sewer Plan/Profile
3. Drop Inlet Details



As Built 10-12-94 August 12, 1994

**BAUGHMAN COMPANY P. A.**  
 ENGINEERING & SURVEYING  
 316/262-7271 • 315 ELLIS • WICHITA, KANSAS 67211



**BENCH MARK #1:** R.R. Spike in Power Pole (East Side) 140.5' South and 20' West of the N.W. Corner Lot 1, Block 4, Chadsworth 2nd Addition, Elev. = 164.01

**BENCH MARK #2:** R.R. Spike in Power Pole (East Side) 46' South and 1' West of S.W. Corner of Lot 41, Block 4, Chadsworth 2nd Addition, Elev. = 163.17

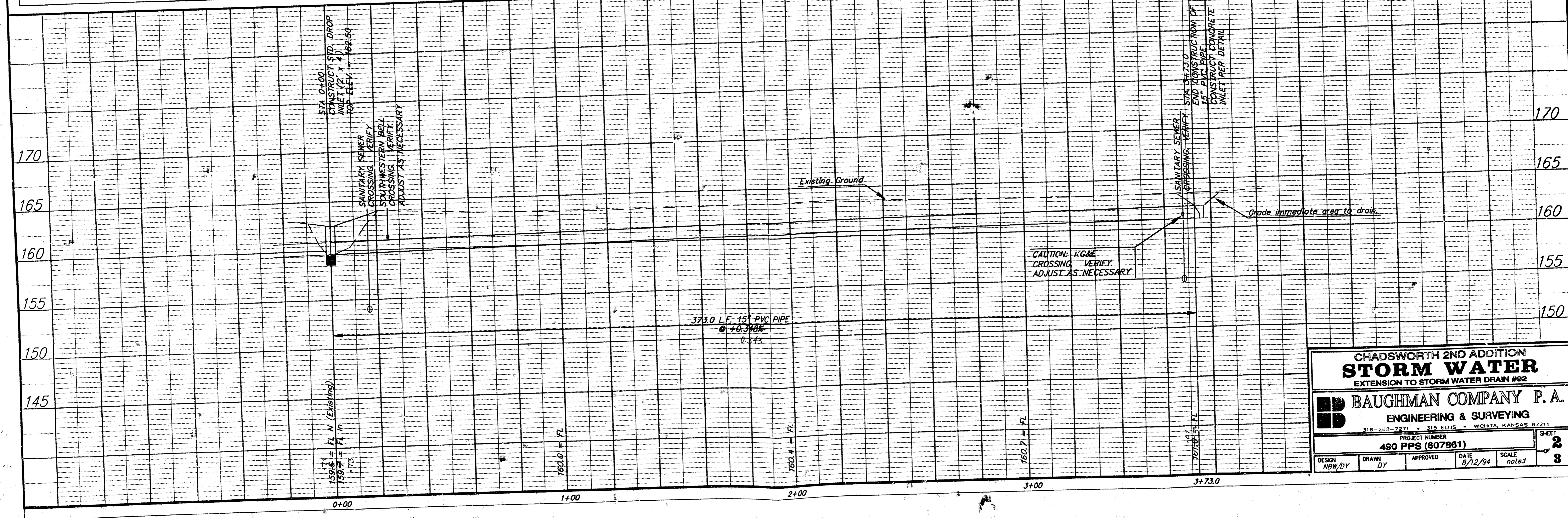
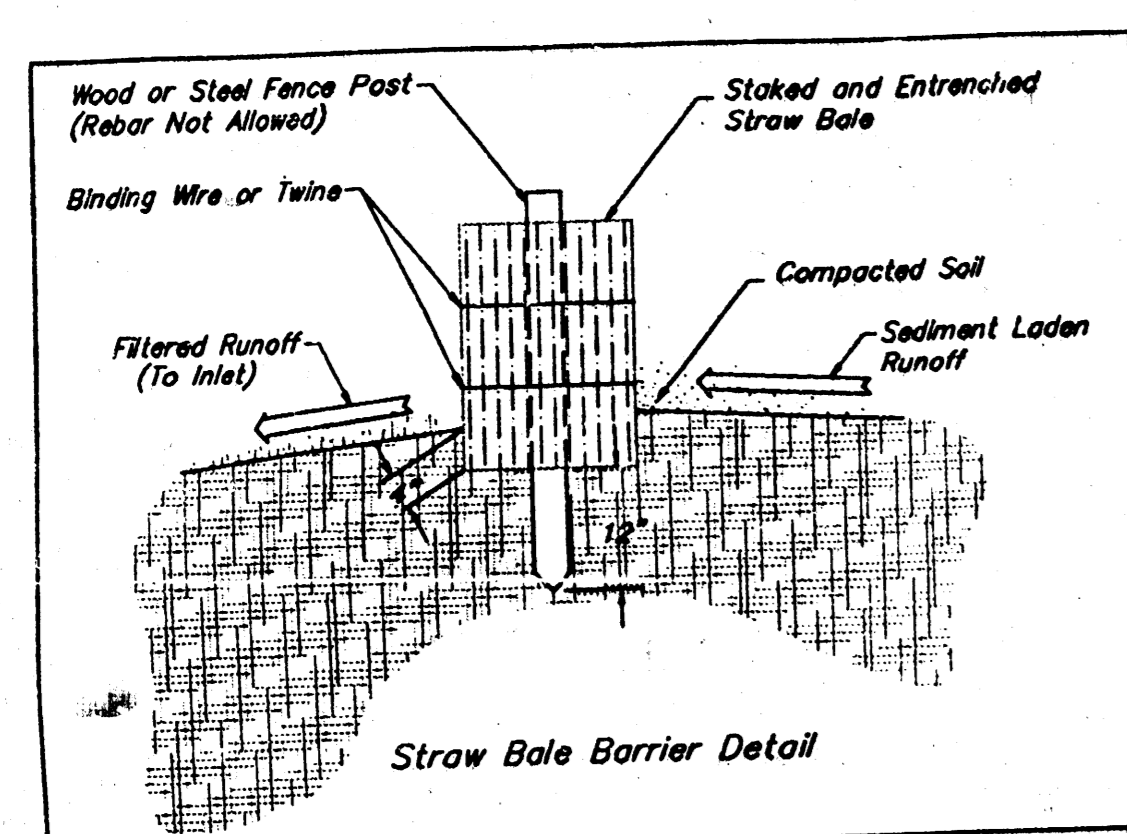
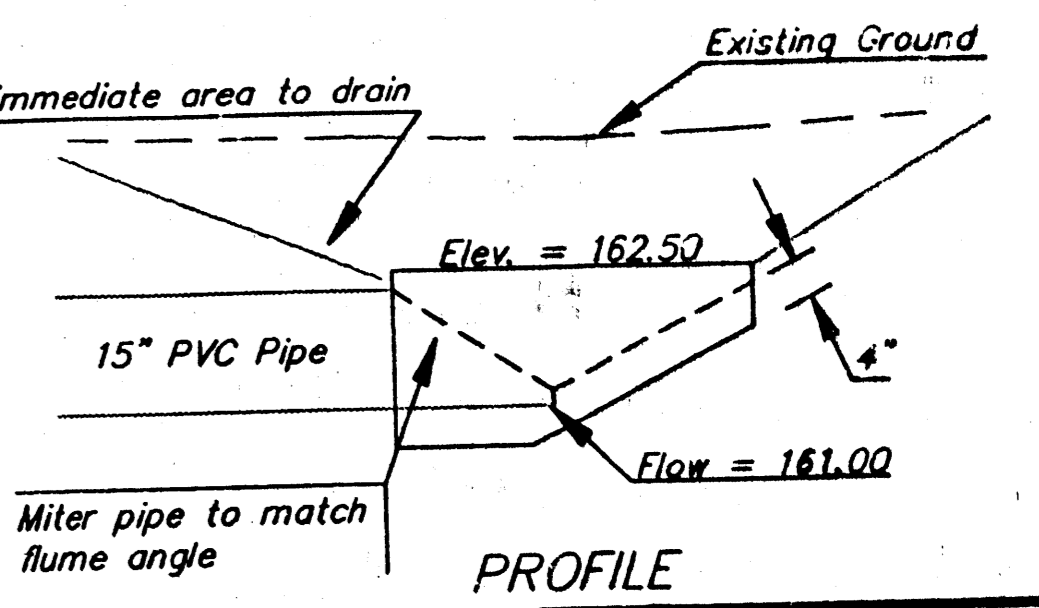
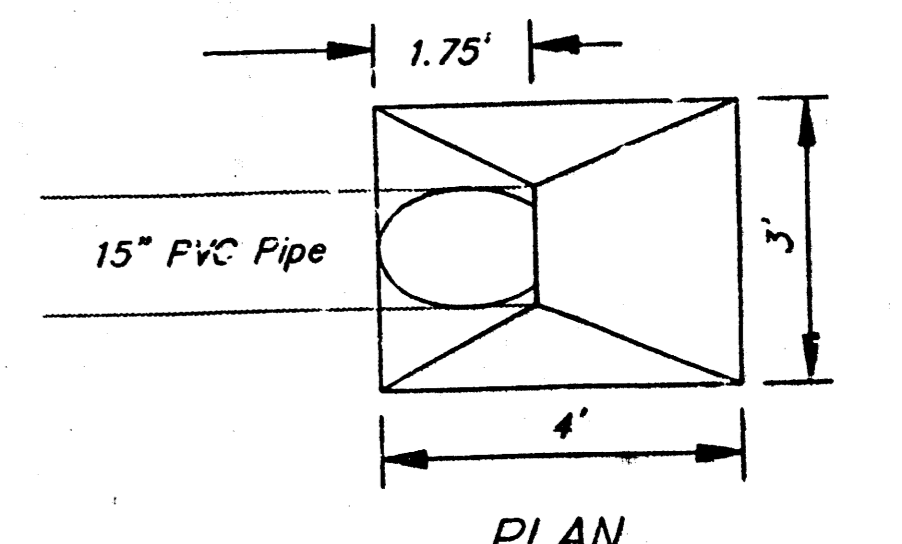
**BENCH MARK #3:** Square Cut in Top of Curb Adjacent to N.E. Corner of Lot 22, Block 1, Chadsworth Addition, Elevation = 164.82

**BENCH MARK #4:** Cross Cut in Top of Headwall at Center Line of Double 3'x5' RCB, 251' East and 48' South of S.E. Corner of Chadsworth 2nd Addition, Elevation = 159.14

**SCALE:**  
 1" = 20' Horizontal  
 1" = 5' Vertical

**DRAIN/FLUME DETAIL**

Construct concrete drain/flume of P.C. Concrete to dimensions shown and of not less than 4" thickness. Smooth trowel angles on surface to drain.



**CHADSWORTH 2ND ADDITION STORM WATER EXTENSION TO STORM WATER DRAIN #92**

**BAUGHMAN COMPANY P. A.**  
 ENGINEERING & SURVEYING

318-263-7271 • 315 E. 15th • WICHITA, KANSAS 67211

PROJECT NUMBER: 490 PFS (807861)

DATE: 8/12/94

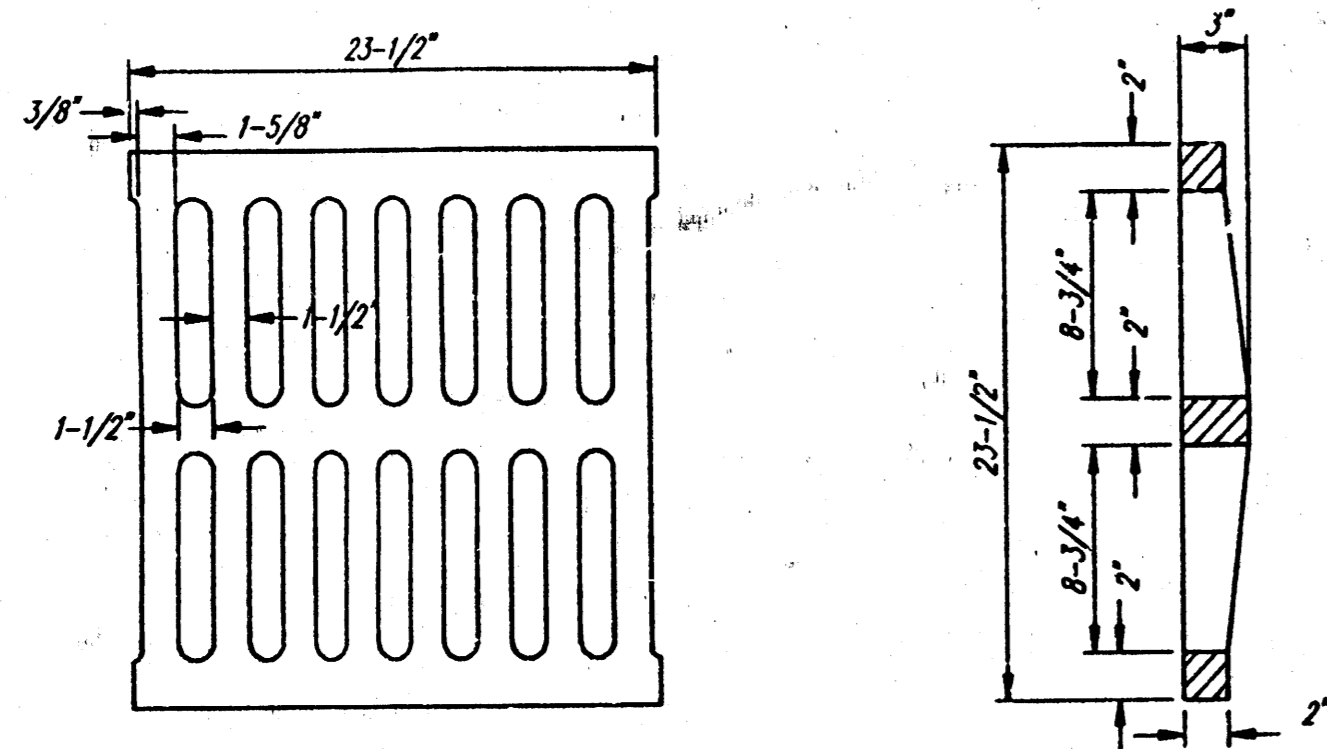
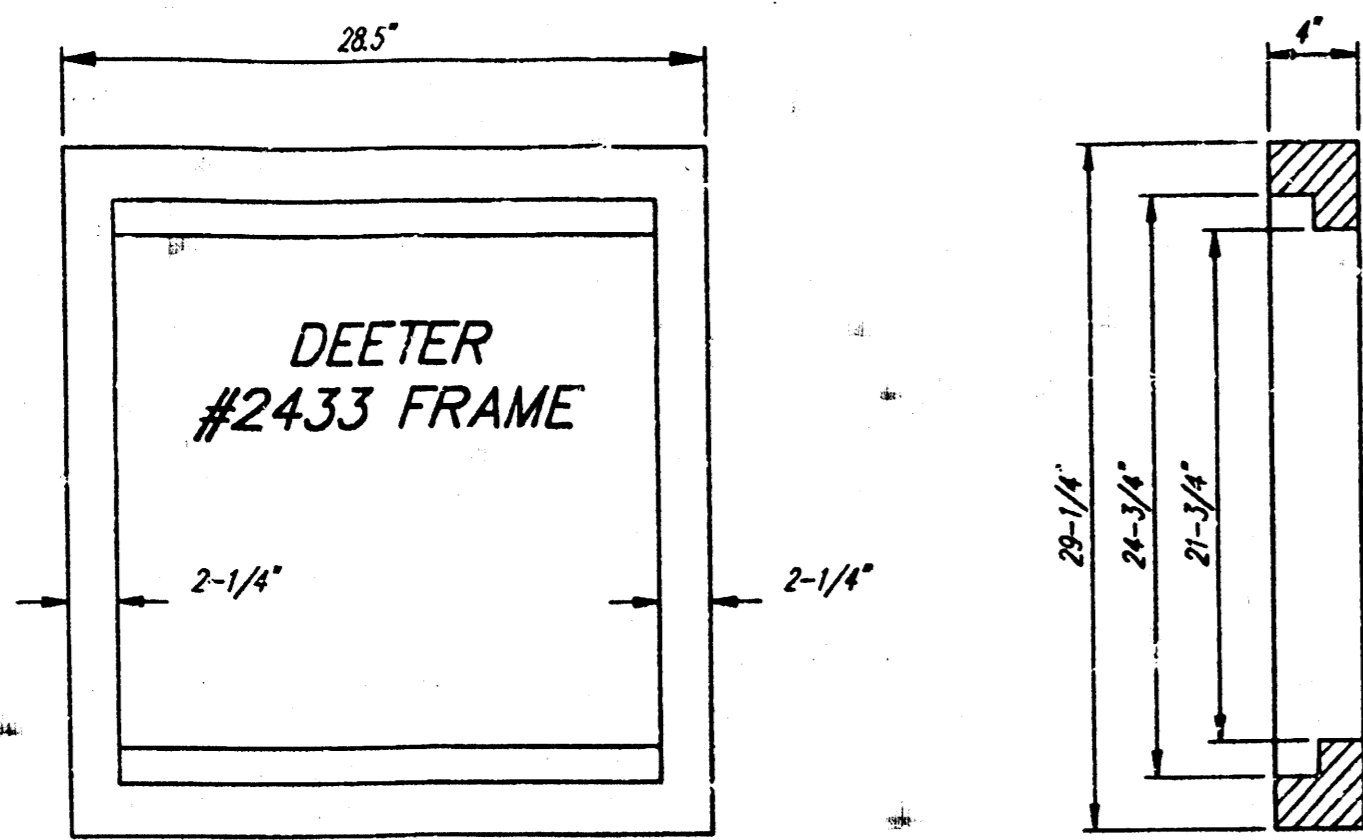
SCALE: noted

DESIGN: NEW/DY

DRAWN: DY

APPROVED: [Signature]

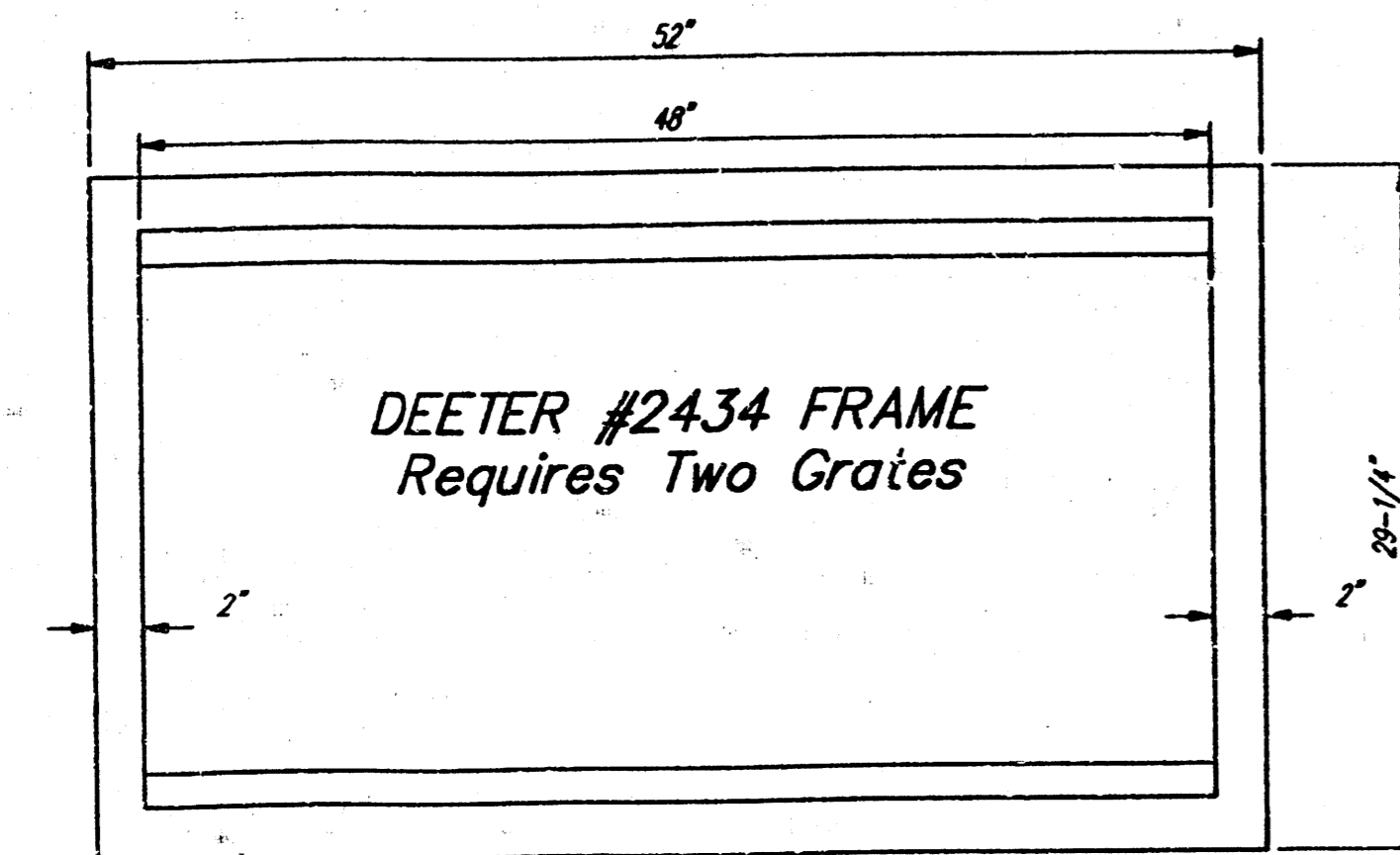
SHEET: 2 OF 8



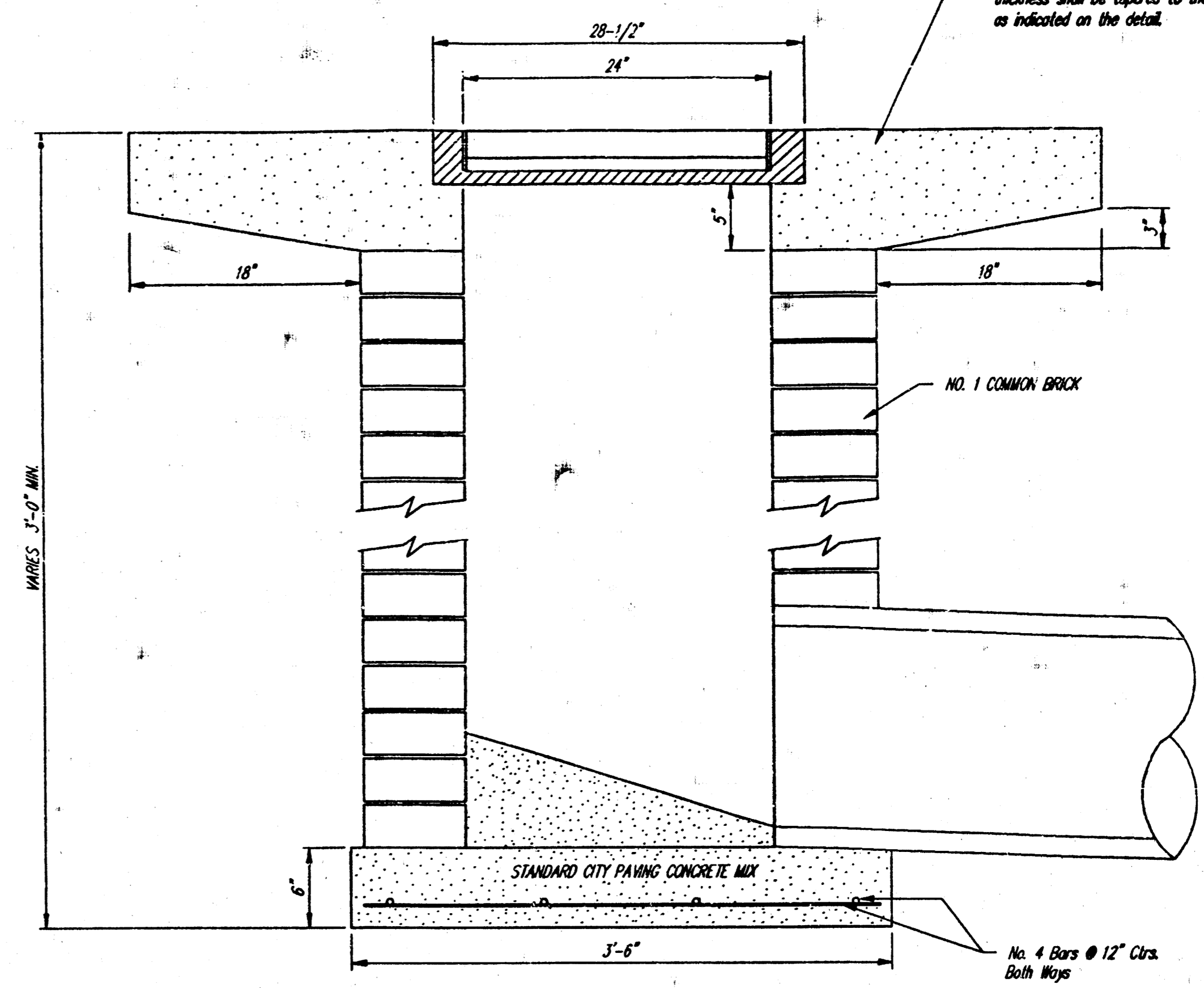
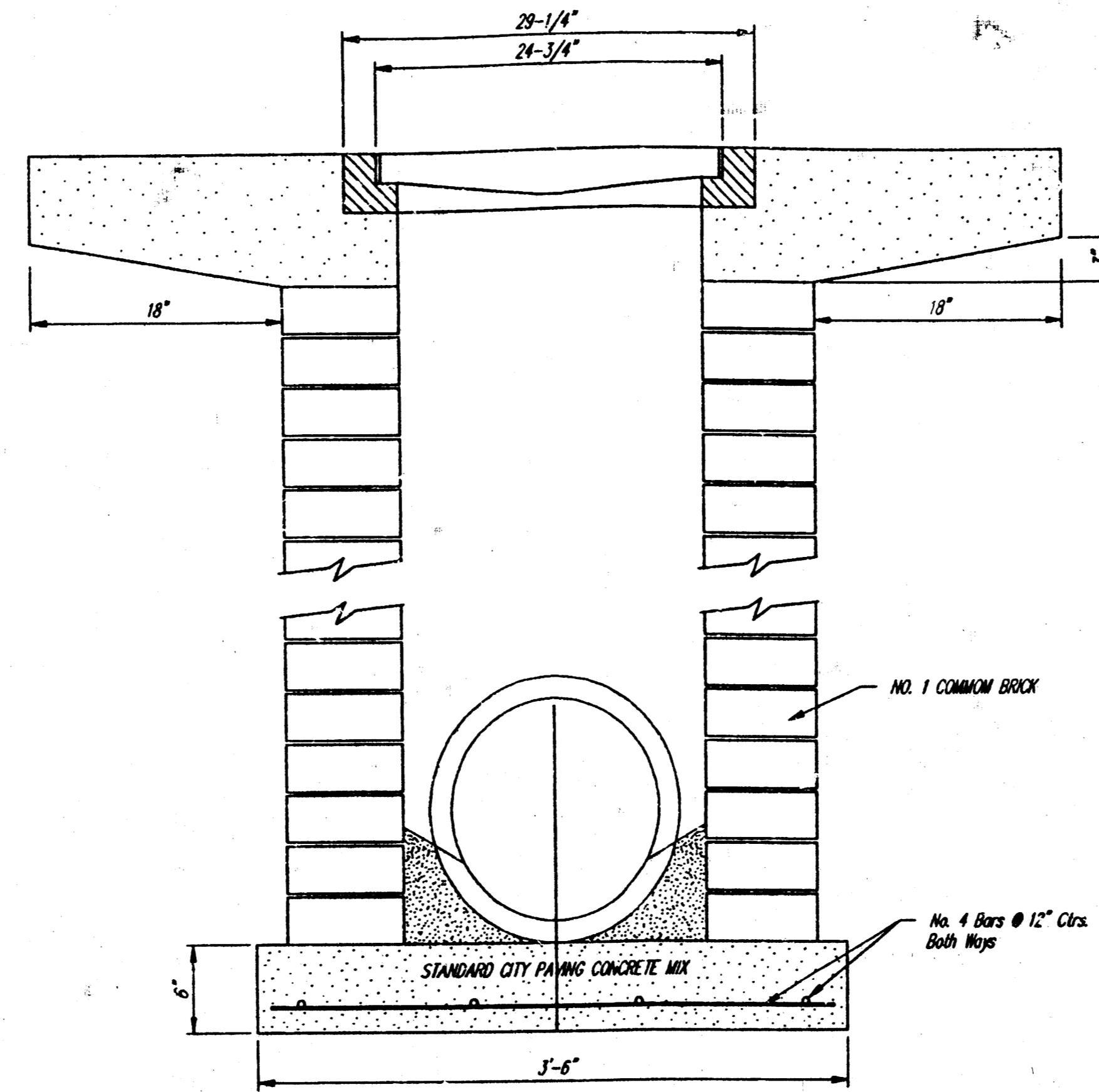
DEETER #2433 GRATE

24" x 24" Frame and Grate Detail

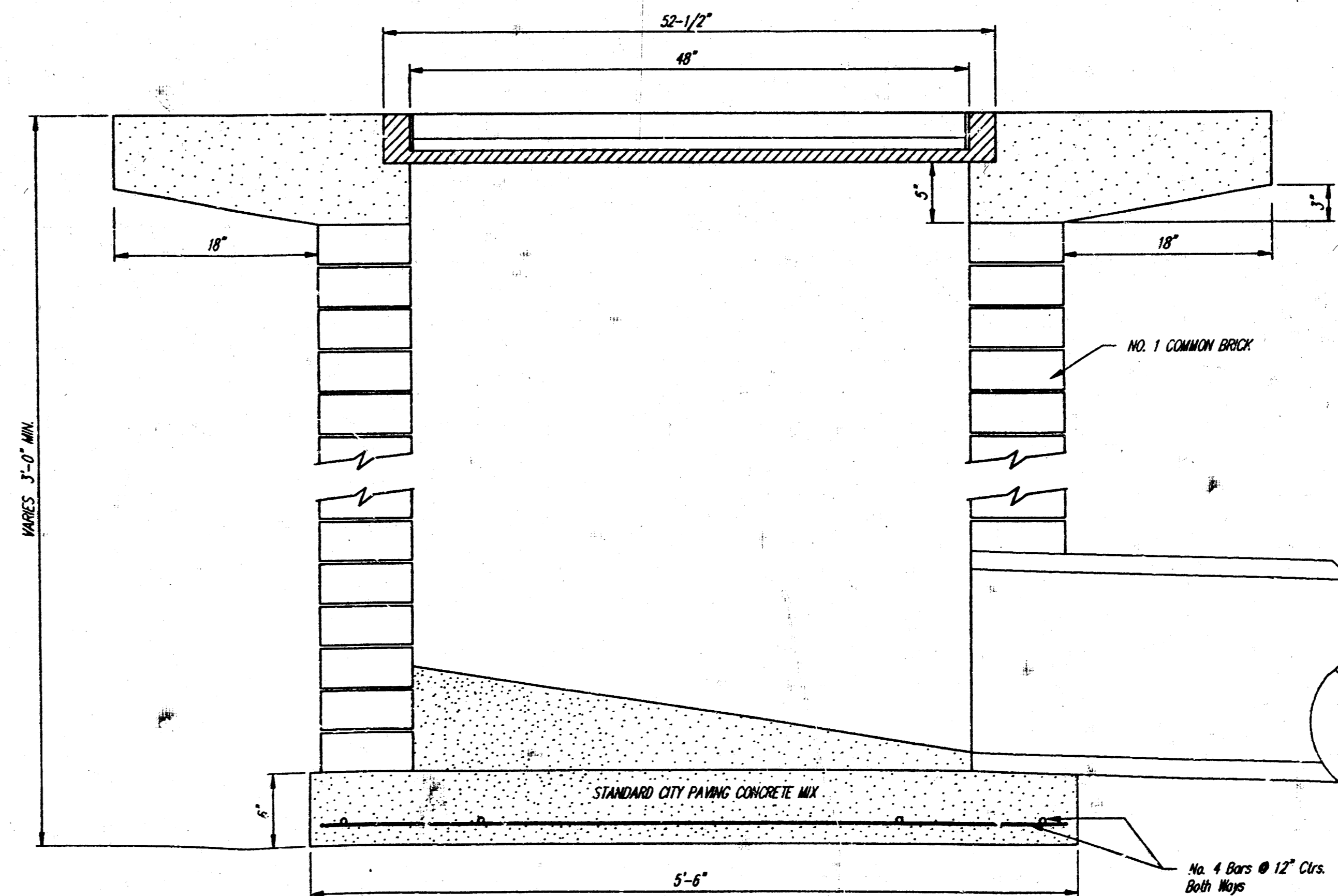
NOTE: Grates shall be imprinted on the top surface with "CITY OF WICHITA" using letters at least 1" in height. Other marking methods may be approved by the engineer.



Double 24" x 24" Frame Detail



Note: Concrete apron shall be constructed around the inlet when inlet is located in an ungraded area. Where the inlet is adjacent to pavement, the pavement thickness shall be tapered to the inlet in 18 inches as indicated on the detail.



DROP INLET DETAILS  
M.E. Lindebak, City Engineer  
City of Wichita, Kansas

Project Number

3

3