



B.M. # ELEV. 107.50 - TOP OF INLET AT SE CORNER OF PROPERTY.

K-42 HIGHWAY

MO. PAC. RAILROAD

ASPHALT

EXISTING BUILDING

PRIVATE STORM SEWER TO SERVE
COPELAND CORPORATION
3200 MAY
WICHITA, KANSAS 67213

PROJECT NO. 468-76-245-80001-000-000-004

APPROVED AS NOTED
By CITY ENGINEER OF WICHITA
Sanitary Sewers
Storm Sewers *EJB*
Driveway Approaches

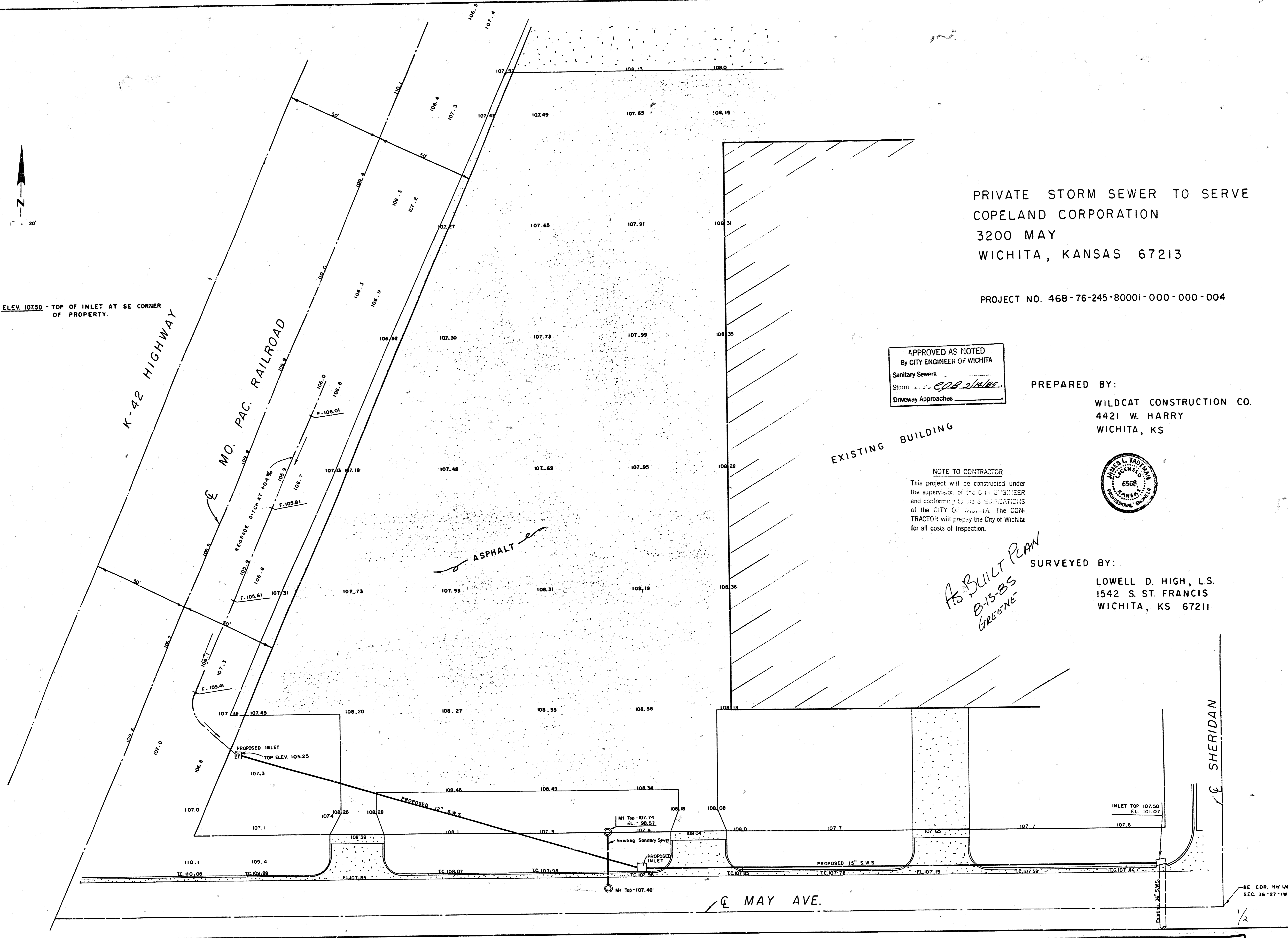
PREPARED BY:
WILDCAT CONSTRUCTION CO.
4421 W. HARRY
WICHITA, KS

NOTE TO CONTRACTOR
This project will be constructed under the supervision of the CITY ENGINEER and conforming to the SPECIFICATIONS of the CITY OF WICHITA. The CONTRACTOR will prepay the City of Wichita for all costs of Inspection.



*AS BUILT PLAN
8-13-85
GREENE*

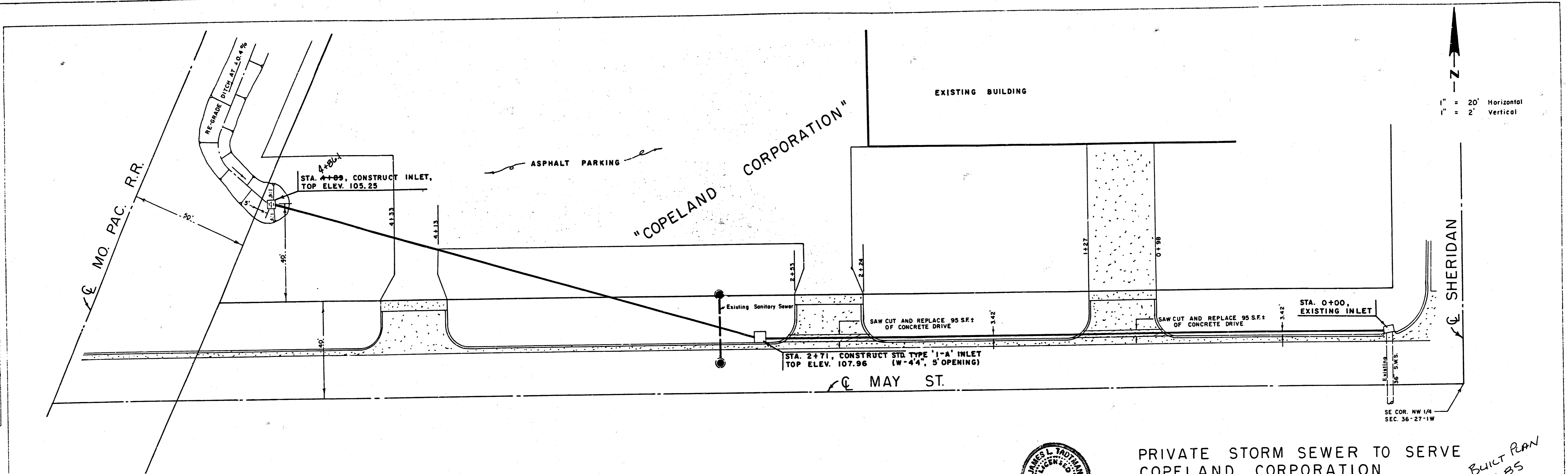
SURVEYED BY:
LOWELL D. HIGH, L.S.
1542 S. ST. FRANCIS
WICHITA, KS 67211



SE COR. NW 1/4
SEC. 36-27-1W

FILMED FROM THE BEST
AVAILABLE COPY.....

DATE: _____ BY: _____
 PLAN
 SURVISED BY: _____
 NOTE BOOK NO. _____
 AUTOMATIC CIRCUIT
 P. OF WAY LICENSE
 No. _____



B.M. = ELEV. 107.50 - TOP OF INLET AT SE CORNER OF PROPERTY.



PRIVATE STORM SEWER TO SERVE
 COPELAND CORPORATION

*AS BUILT PLAN
 8-13-85
 GREENE*

PROJECT NO. 468-76-245-80001-000-000-004

DATE: _____ BY: _____
 PROFILE
 SURVISED BY: _____
 NOTE BOOK NO. _____
 AUTOMATIC CIRCUIT
 P. OF WAY LICENSE
 No. _____

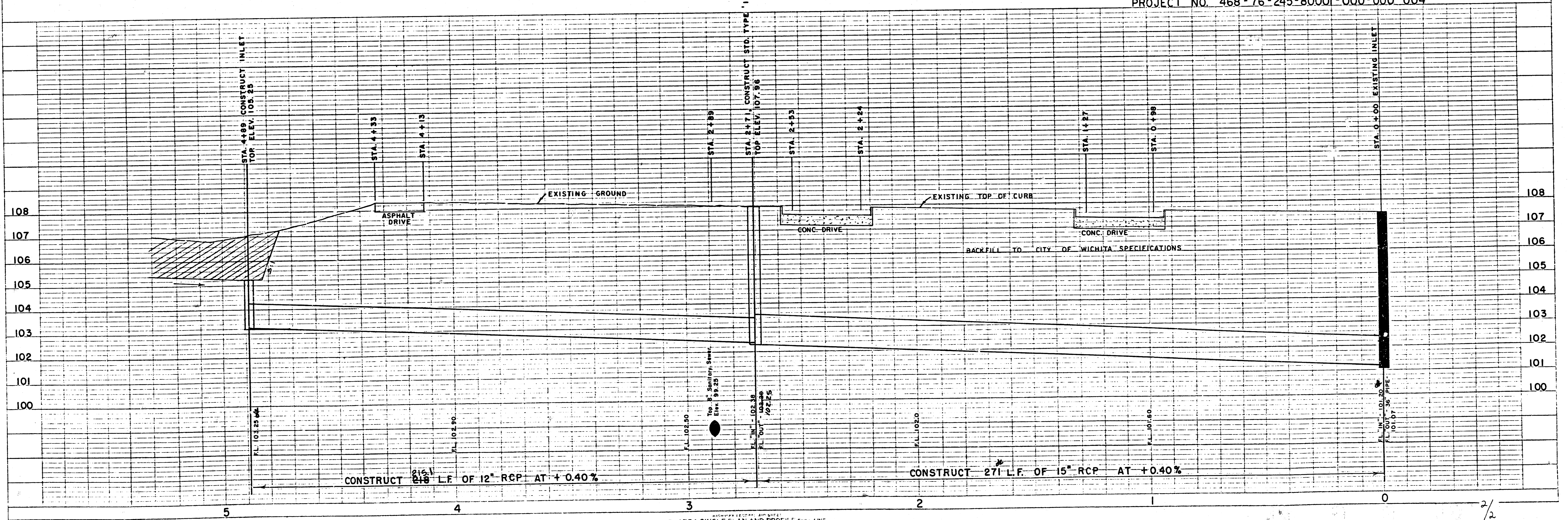


PLATE 1-SINGLE PLAN AND PROFILE-FULL LINE
 PRINTED IN U.S.A.

FILMED FROM THE BEST
 AVAILABLE COPY