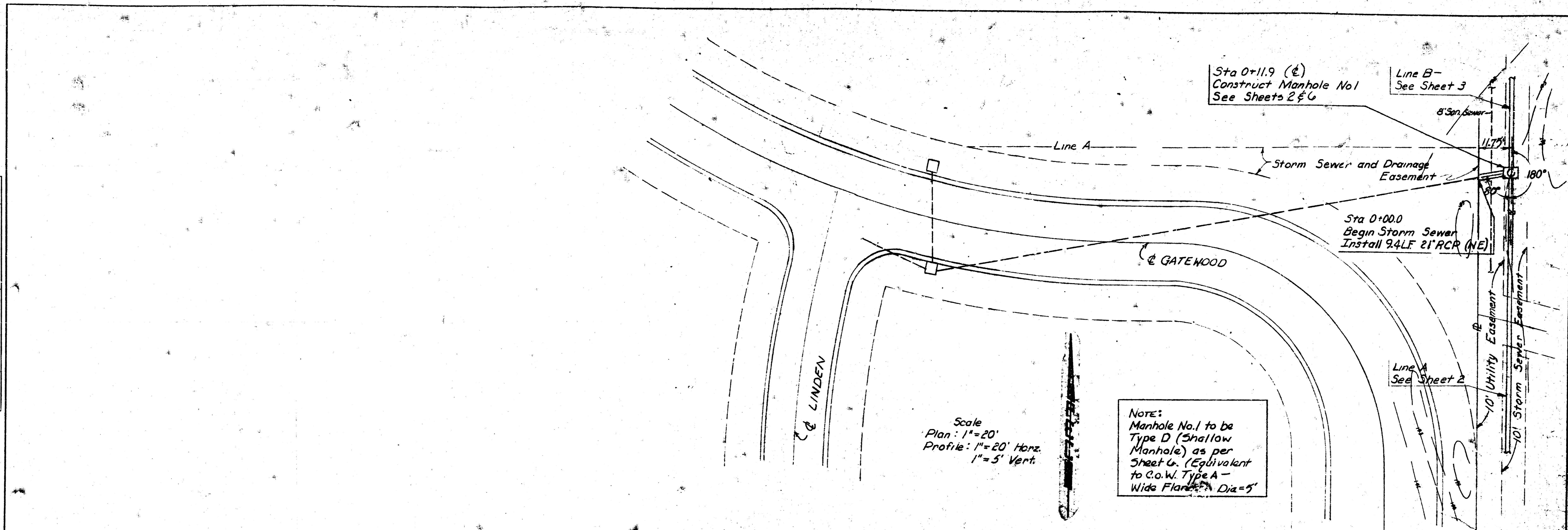


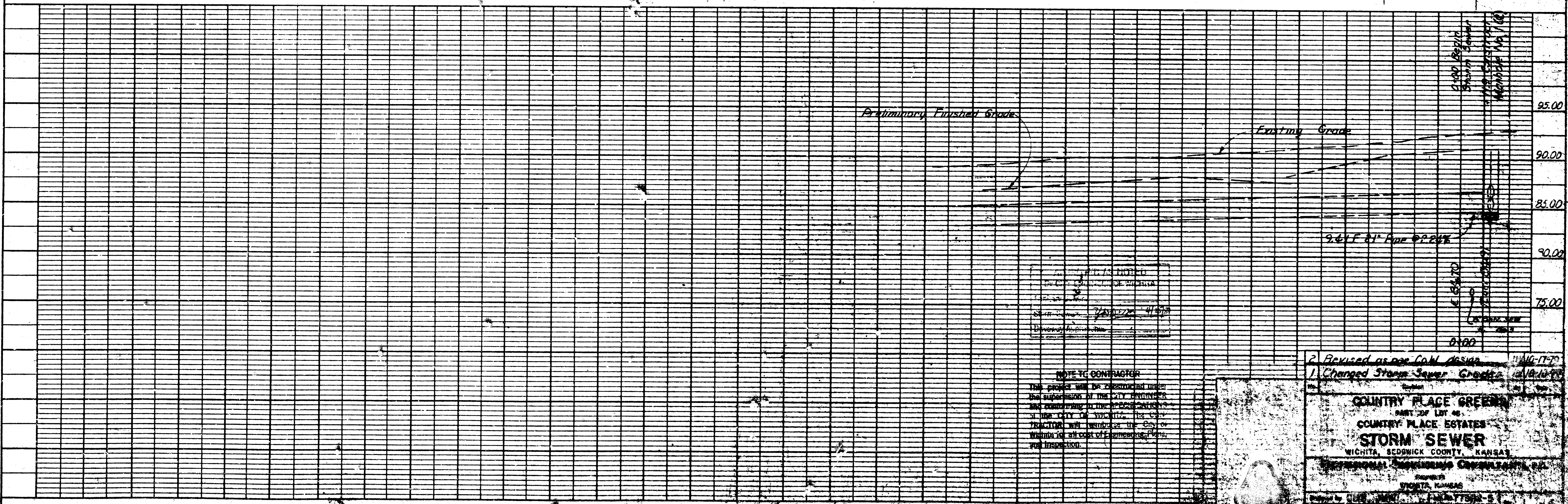
PLAN
 DATE: _____
 BY: _____
 CHECKED: _____
 NO. _____

PROFILE
 DATE: _____
 BY: _____
 CHECKED: _____
 NO. _____



Scale
 Plan: 1"=20'
 Profile: 1"=20' Horiz.
 1"=5' Vert.

NOTE:
 Manhole No. 1 to be
 Type D (Shallow
 Manhole) as per
 Sheet G. (Equivalent
 to C.O.W. Type A -
 Wide Flange Dia=5'



DATE: _____
 BY: _____
 CHECKED: _____
 NO. _____

NOTE TO CONTRACTOR
 This project will be constructed under
 the supervision of the CITY ENGINEER
 and conforming to the SPECIFICATIONS
 of the CITY OF WICHITA. The CONTRACTOR
 shall be responsible for the City of
 Wichita for all cost of Engineering, Plans,
 and Inspection.

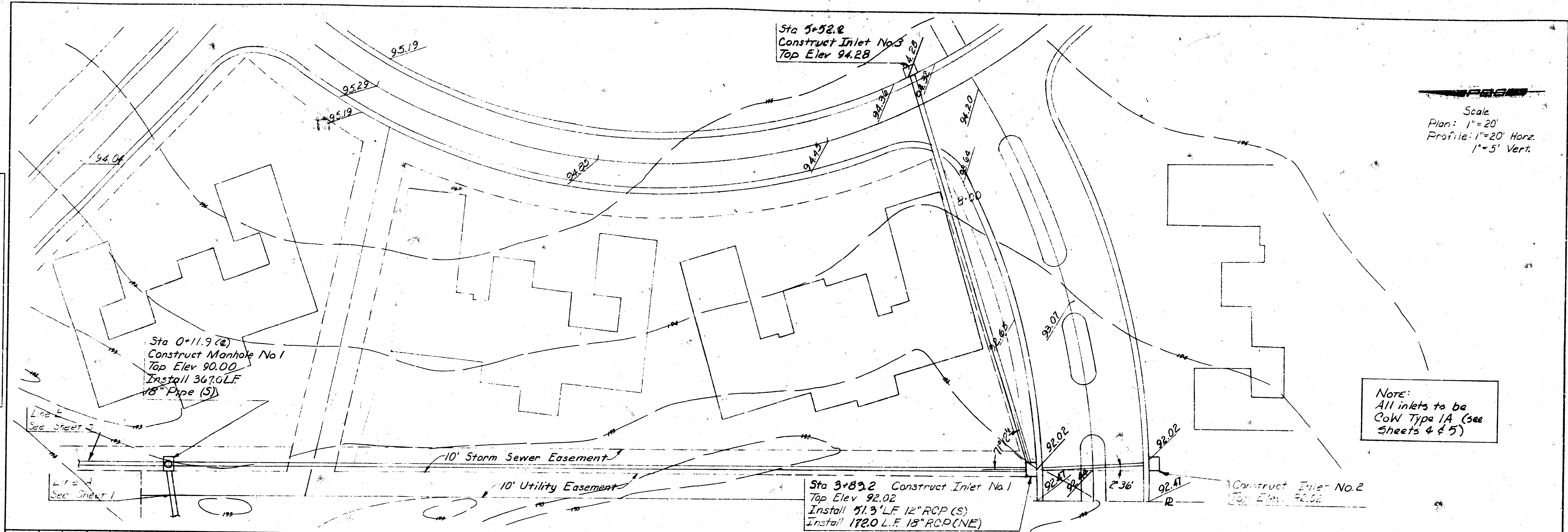
2. Revised as per C.O.W. Ass'n. 11/16/77
 1. Changed Storm Sewer Grade 11/16/77

COUNTRY PLACE GREEN
 PART OF LOT 46
COUNTRY PLACE ESTATES
STORM SEWER
 WICHITA, SEDGWICK COUNTY, KANSAS

PROFESSIONAL ENGINEERING CONSULTANTS, P.C.
 WICHITA, KANSAS

FOR MED FROM THE BEST

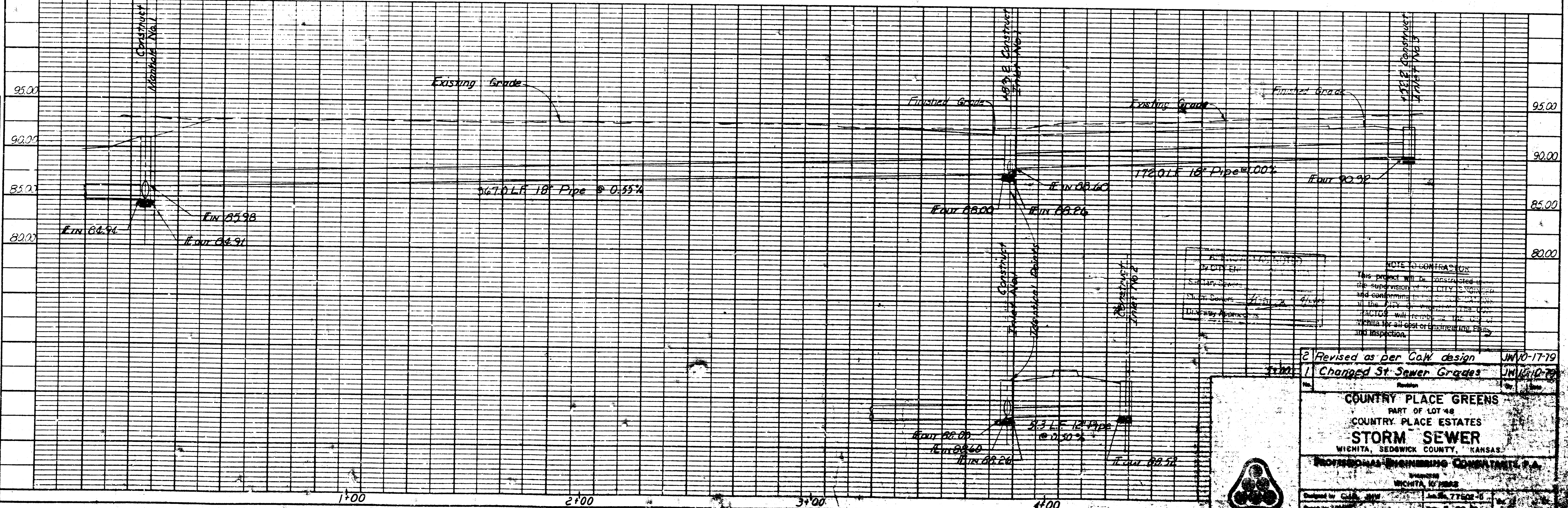
PLAN SURVIVED
 DATE: _____ BY: _____
 NOTE BOOK: _____
 NO. OF SHEETS: _____
 NO. OF WAY CHECKED: _____



Scale
 Plan: 1"=20'
 Profile: 1"=20' Horiz.
 1"=5' Vert.

Note:
 All inlets to be
 CoW Type 1A (see
 Sheets 4 & 5)

PROFILE SURVIVED
 DATE: _____ BY: _____
 NOTE BOOK: _____
 NO. OF SHEETS: _____
 NO. OF WAY CHECKED: _____



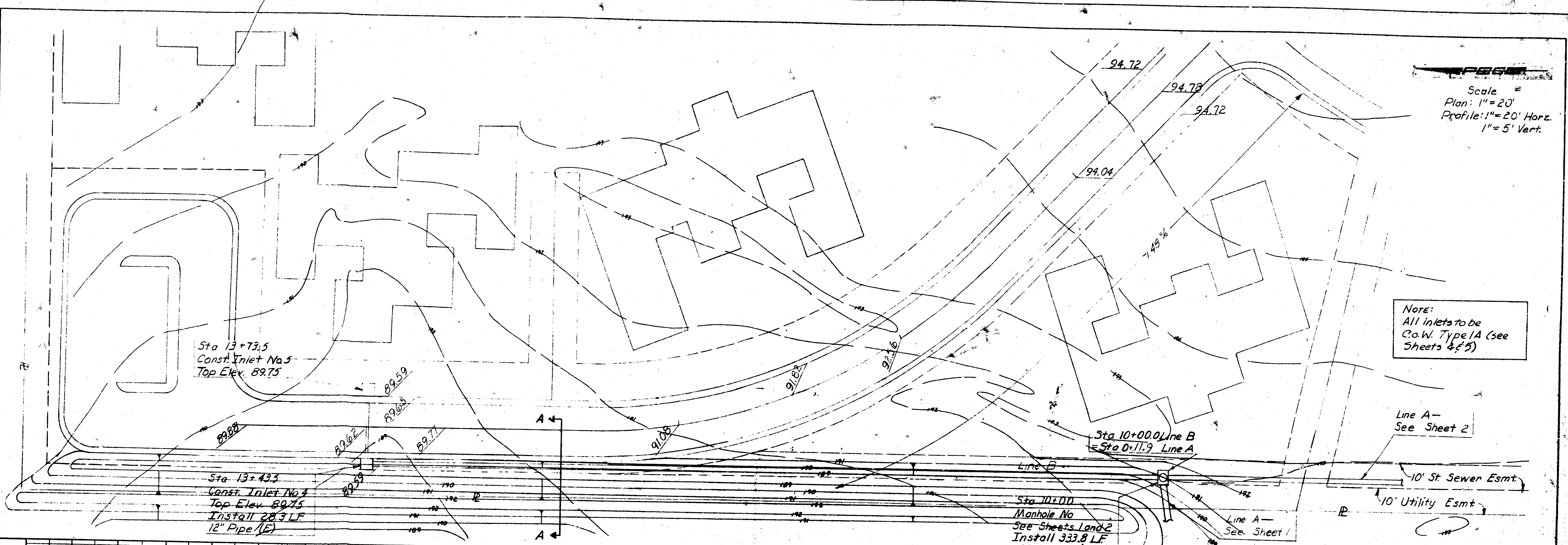
APPROVED FOR CONSTRUCTION
 BY DATE: _____
 SUPERVISOR: _____
 CITY ENGINEER: _____
 CITY CLERK: _____
 CITY COMMISSIONER: _____

NOTE TO CONTRACTOR
 This project will be constructed under the supervision of the CITY ENGINEER and conforming to the CITY COMMISSIONER'S ORDER. The CONTRACTOR will be responsible for the cost of engineering, plans, and inspection.

2 Revised as per CoW design JUN 10-17-19
 1 Changed St Sewer Grades JUN 10-17-19

Country Place Greens
 Part of Lot 48
 Country Place Estates
STORM SEWER
 WICHITA, SEDGWICK COUNTY, KANSAS
 PROFESSIONAL ENGINEERING CONSULTANTS, P.A.
 WICHITA, KANSAS
 466-245-8084 000-000-000

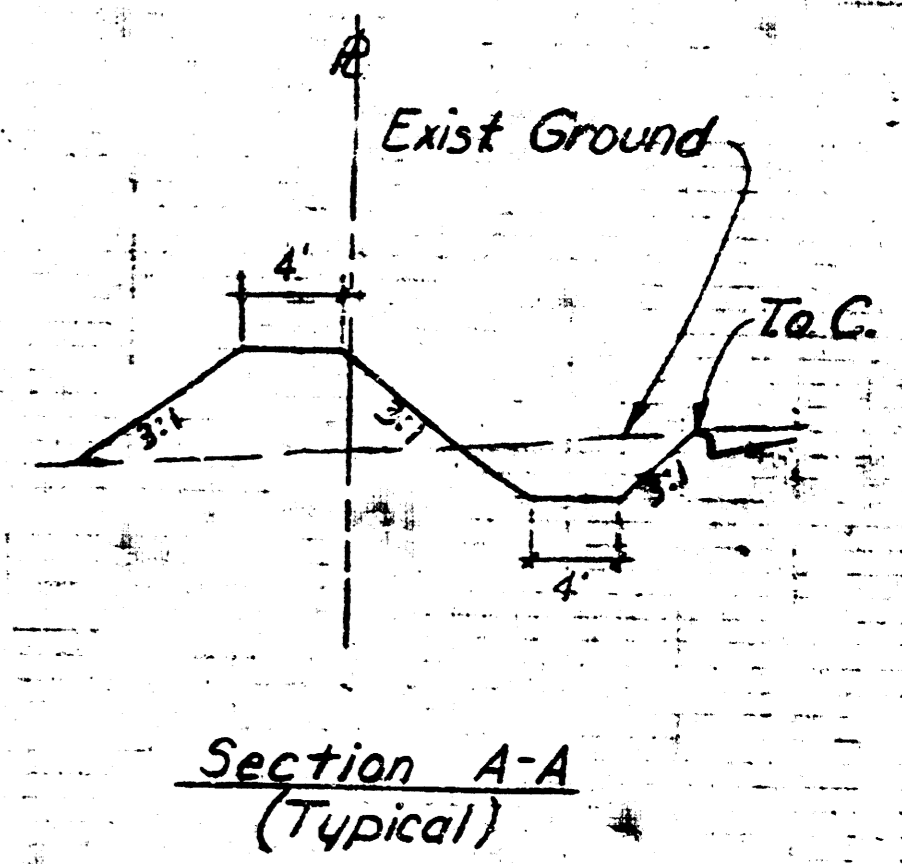
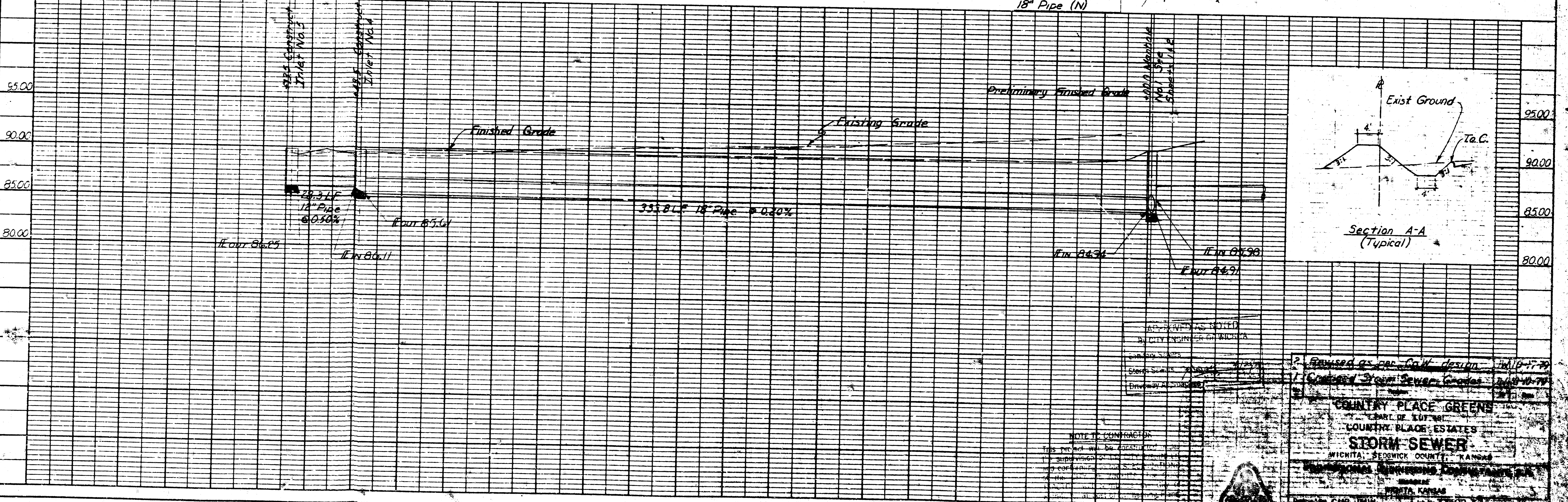
PLAN
 SUBMITTED BY
 DATE
 NOTED BY
 DATE
 NOTE BOOK NO.
 STRUCTURE NOTATION CHECK NO.



Scale
 Plan: 1" = 20'
 Profile: 1" = 20' Horiz.
 1" = 5' Vert.

Note:
 All inlets to be
 C.O.W. Type 1A (see
 Sheets 4 & 5)

PROFILE
 SUBMITTED BY
 DATE
 NOTED BY
 DATE
 NOTE BOOK NO.
 STRUCTURE NOTATION CHECK NO.



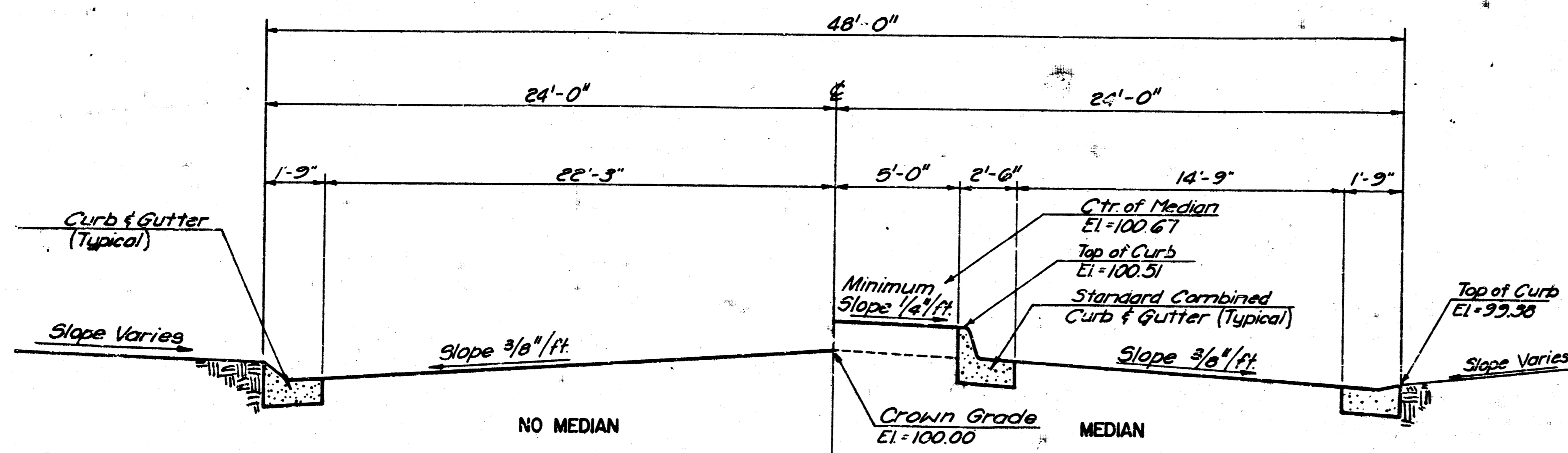
DATE
 BY
 CHECKED
 DATE

NOTE TO CONTRACTOR

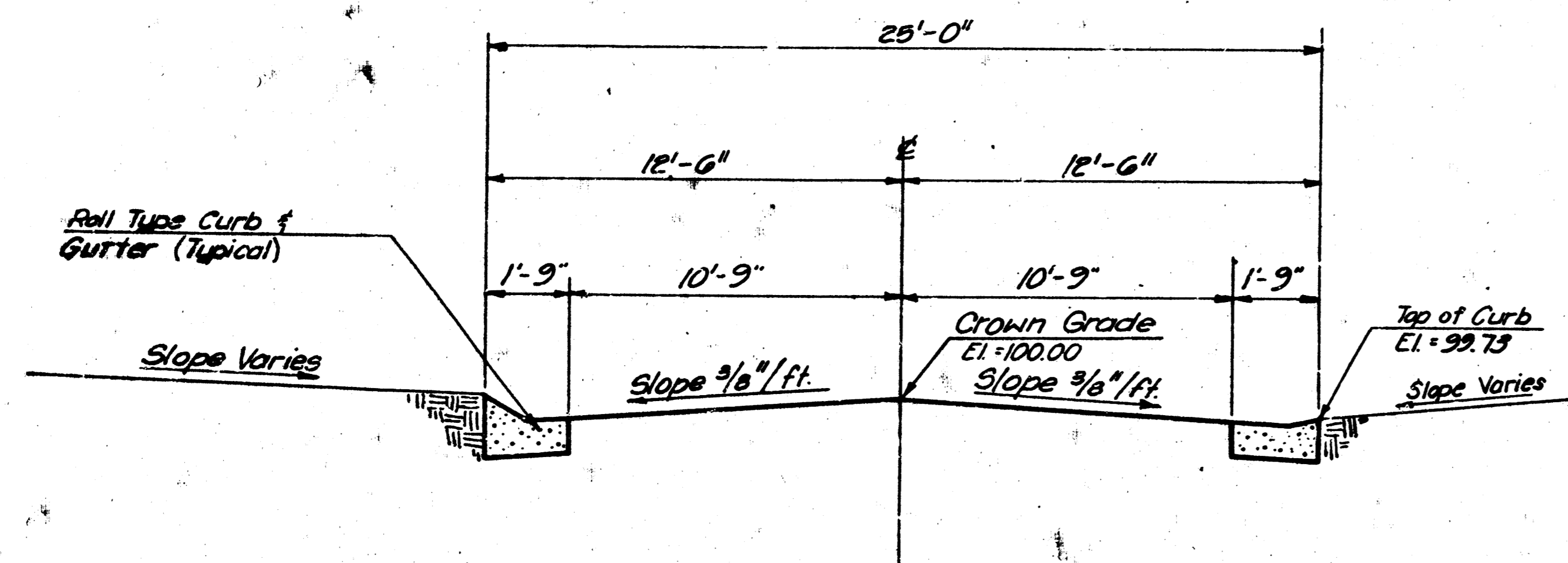
THIS PLAN AND PROFILE SHALL BE CONSIDERED AS PART OF THE CONTRACT DOCUMENTS. THE CONTRACTOR SHALL BE RESPONSIBLE FOR OBTAINING ALL NECESSARY PERMITS AND FOR VERIFYING THE ACCURACY OF ALL DATA AND CONDITIONS SHOWN ON THIS PLAN AND PROFILE. THE CONTRACTOR SHALL BE RESPONSIBLE FOR PROTECTING ALL EXISTING UTILITIES AND STRUCTURES. THE CONTRACTOR SHALL BE RESPONSIBLE FOR MAINTAINING ACCESS TO ALL ADJACENT PROPERTIES AND PUBLIC UTILITIES. THE CONTRACTOR SHALL BE RESPONSIBLE FOR RESTORING ALL AREAS TO ORIGINAL OR BETTER CONDITION. THE CONTRACTOR SHALL BE RESPONSIBLE FOR OBTAINING ALL NECESSARY PERMITS AND FOR VERIFYING THE ACCURACY OF ALL DATA AND CONDITIONS SHOWN ON THIS PLAN AND PROFILE. THE CONTRACTOR SHALL BE RESPONSIBLE FOR PROTECTING ALL EXISTING UTILITIES AND STRUCTURES. THE CONTRACTOR SHALL BE RESPONSIBLE FOR MAINTAINING ACCESS TO ALL ADJACENT PROPERTIES AND PUBLIC UTILITIES. THE CONTRACTOR SHALL BE RESPONSIBLE FOR RESTORING ALL AREAS TO ORIGINAL OR BETTER CONDITION.

Revised as per C.O.W. design - 11/10/79
 Country Place Greens
 STORM SEWER
 WICHITA, SEDGWICK COUNTY, KANSAS
 ENGINEER: [Signature]
 DATE: 11/10/79

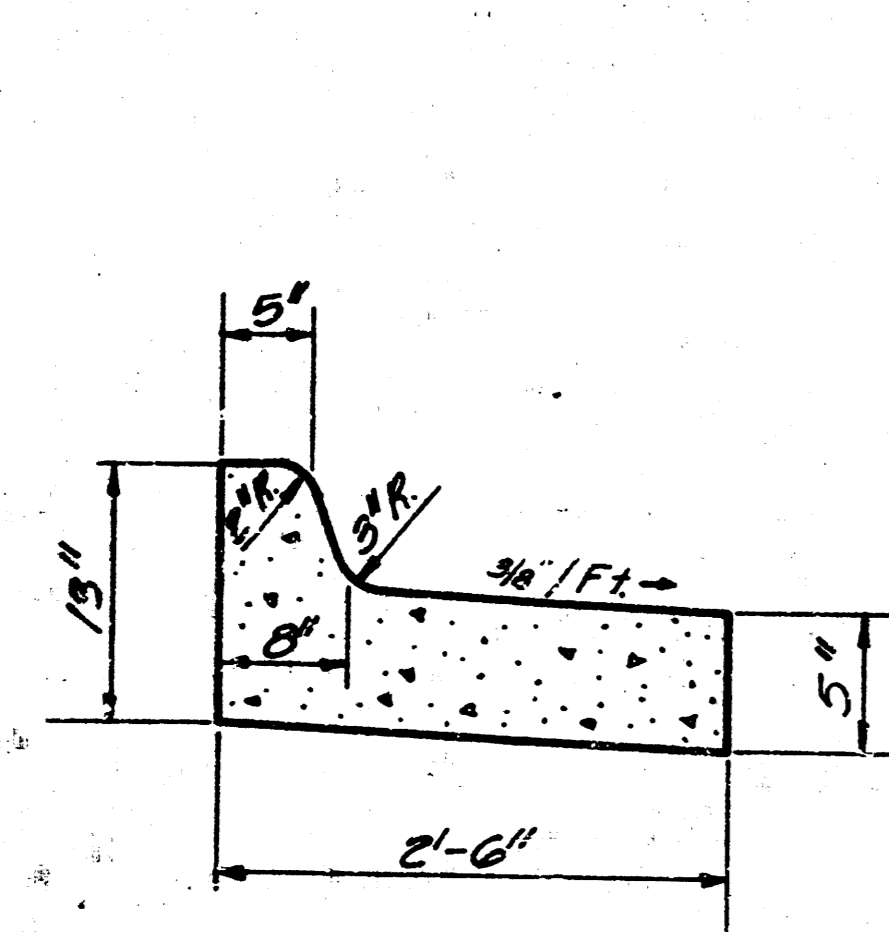
SHEET NO.	TOTAL SHEETS
5	17



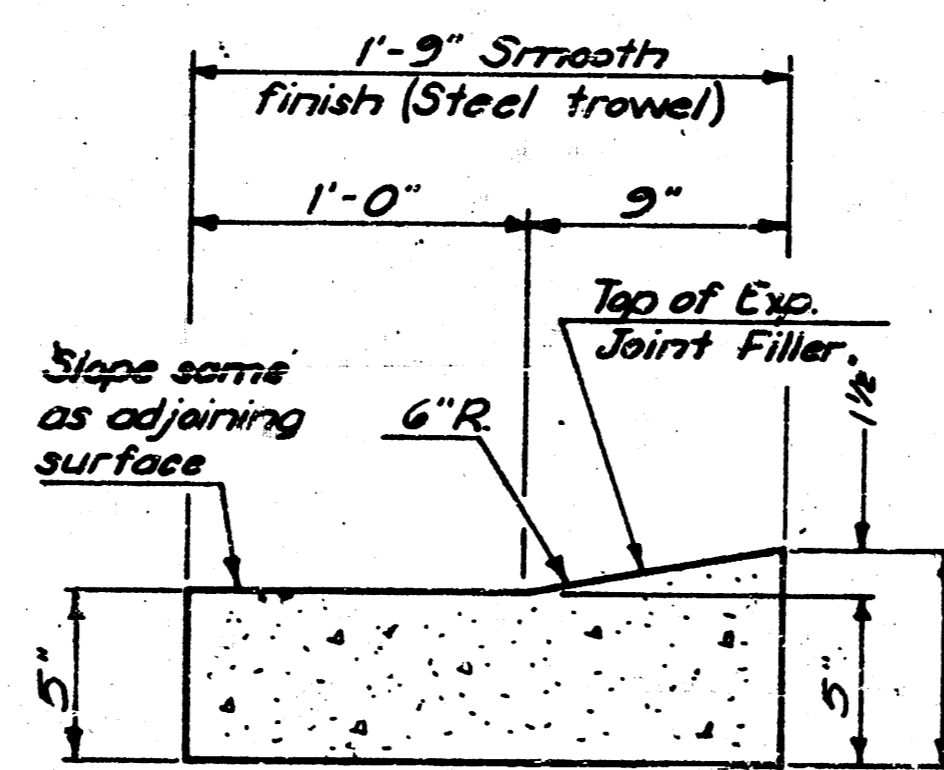
TYPICAL PAVEMENT SECTION W/MEDIAN



TYPICAL PAVEMENT SECTION

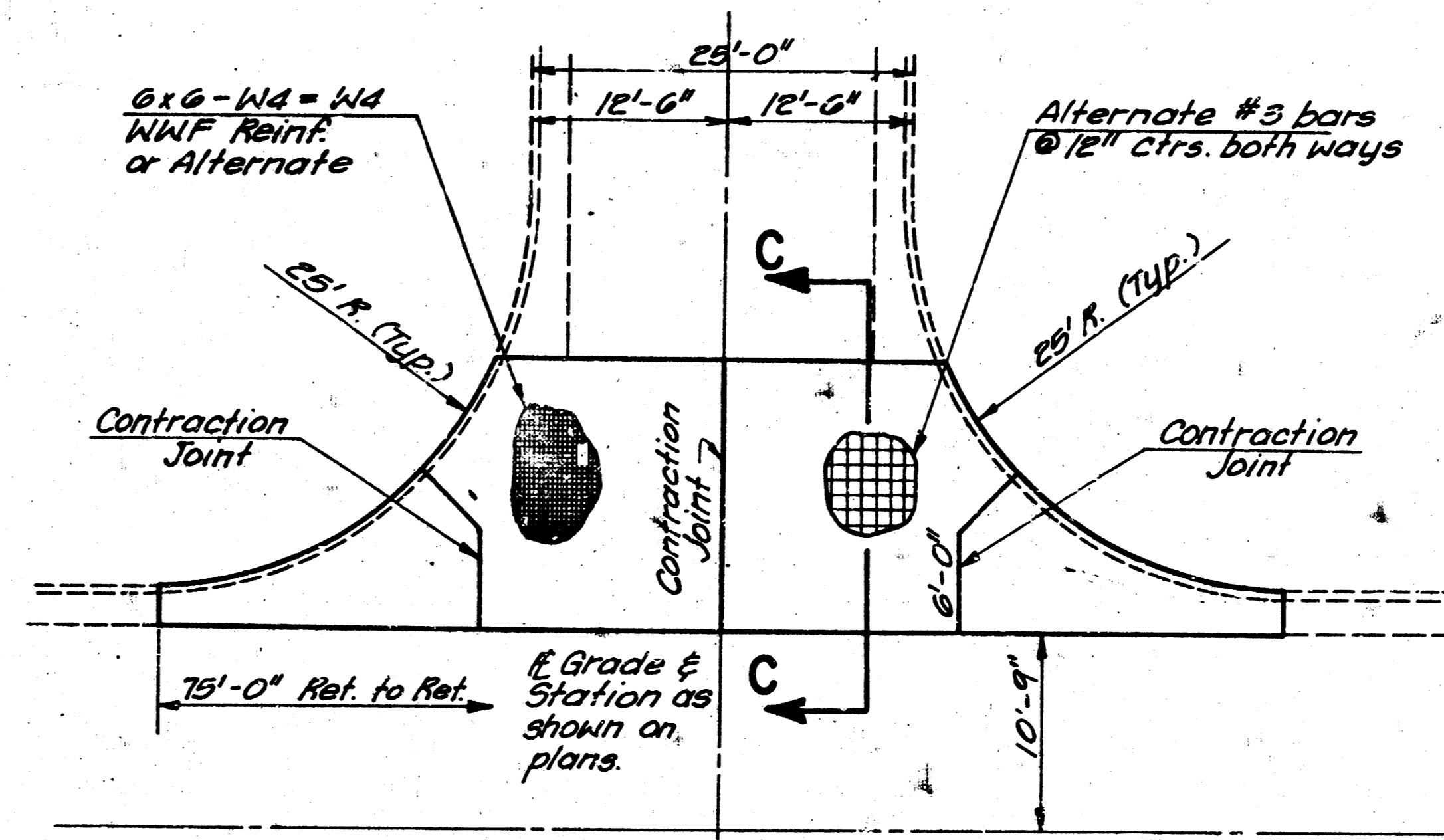


STANDARD COMBINED CURB & GUTTER

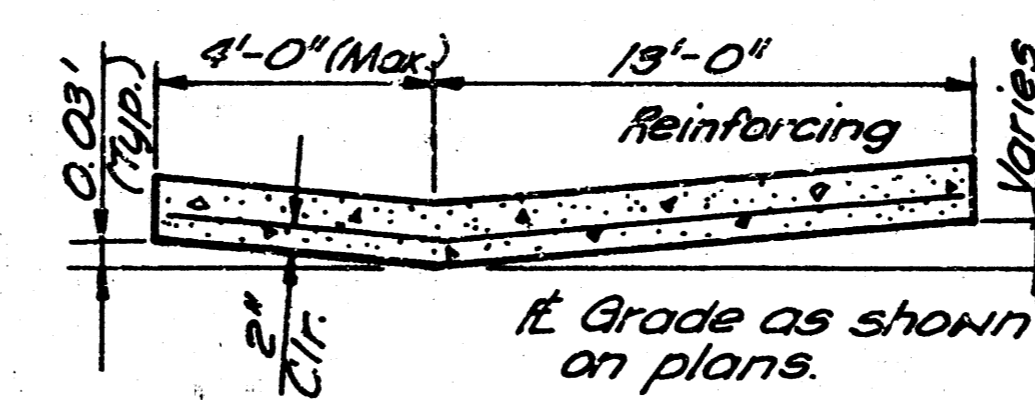


COMBINED CURB & GUTTER (TYPE III) (SPECIAL)

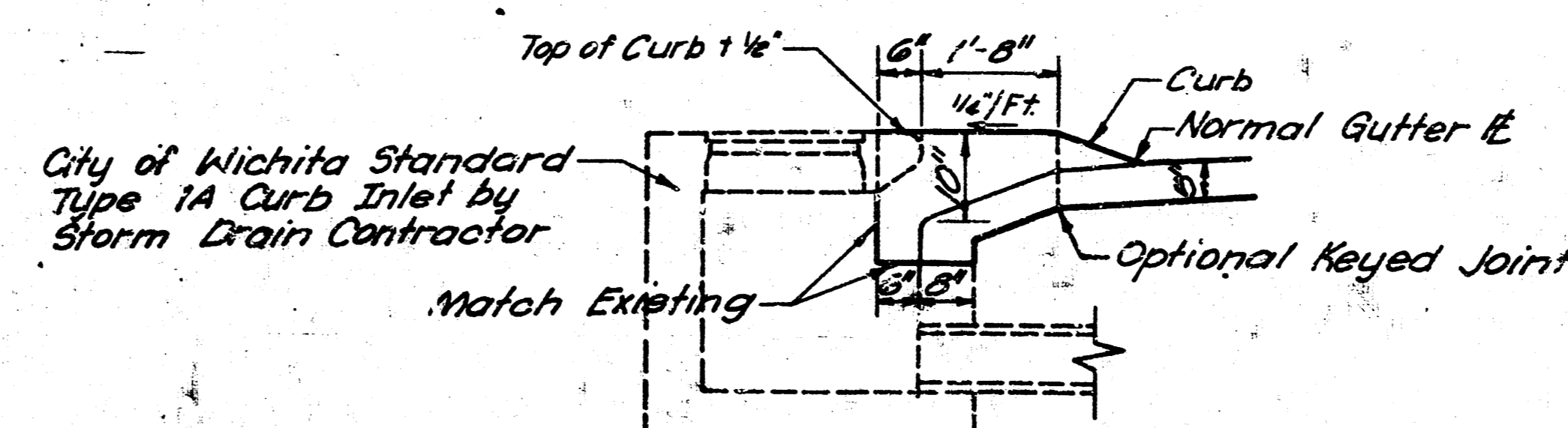
CURB & GUTTER DETAILS



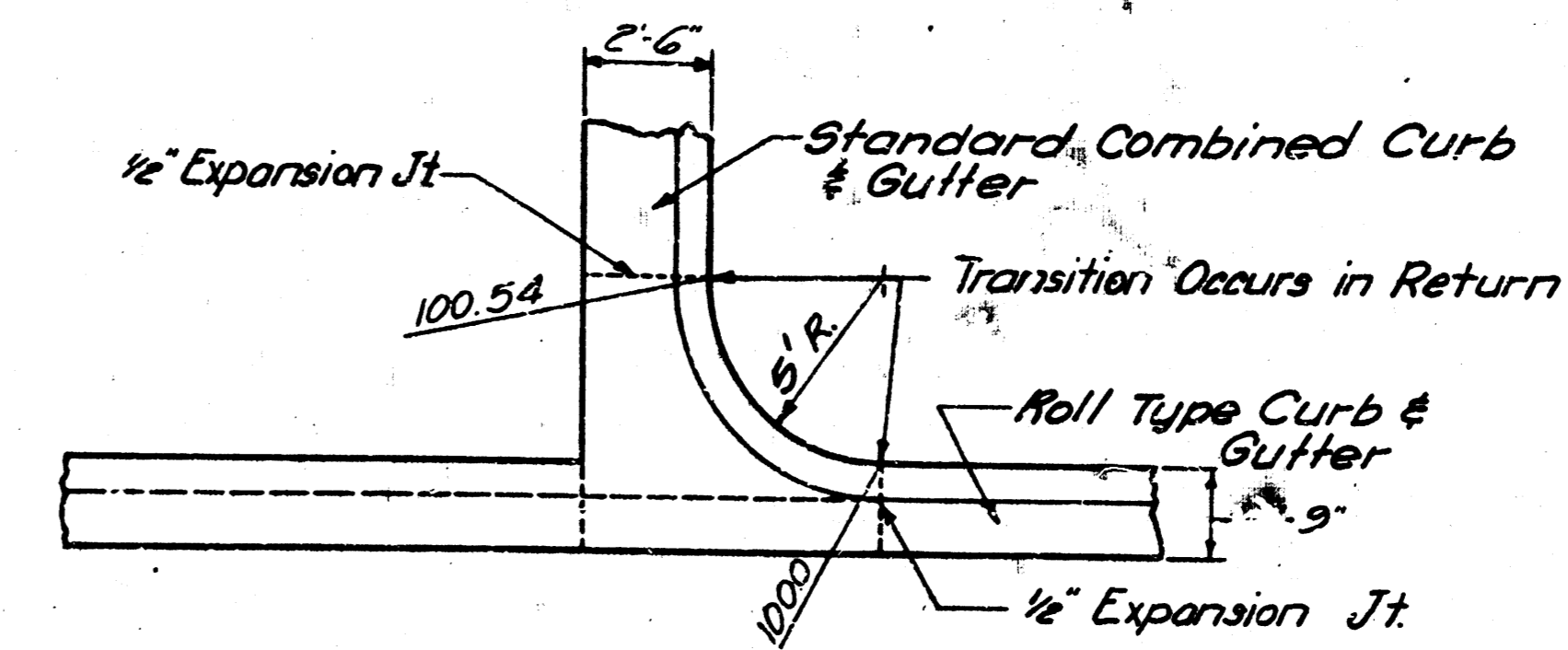
VALLEY GUTTER DETAILS



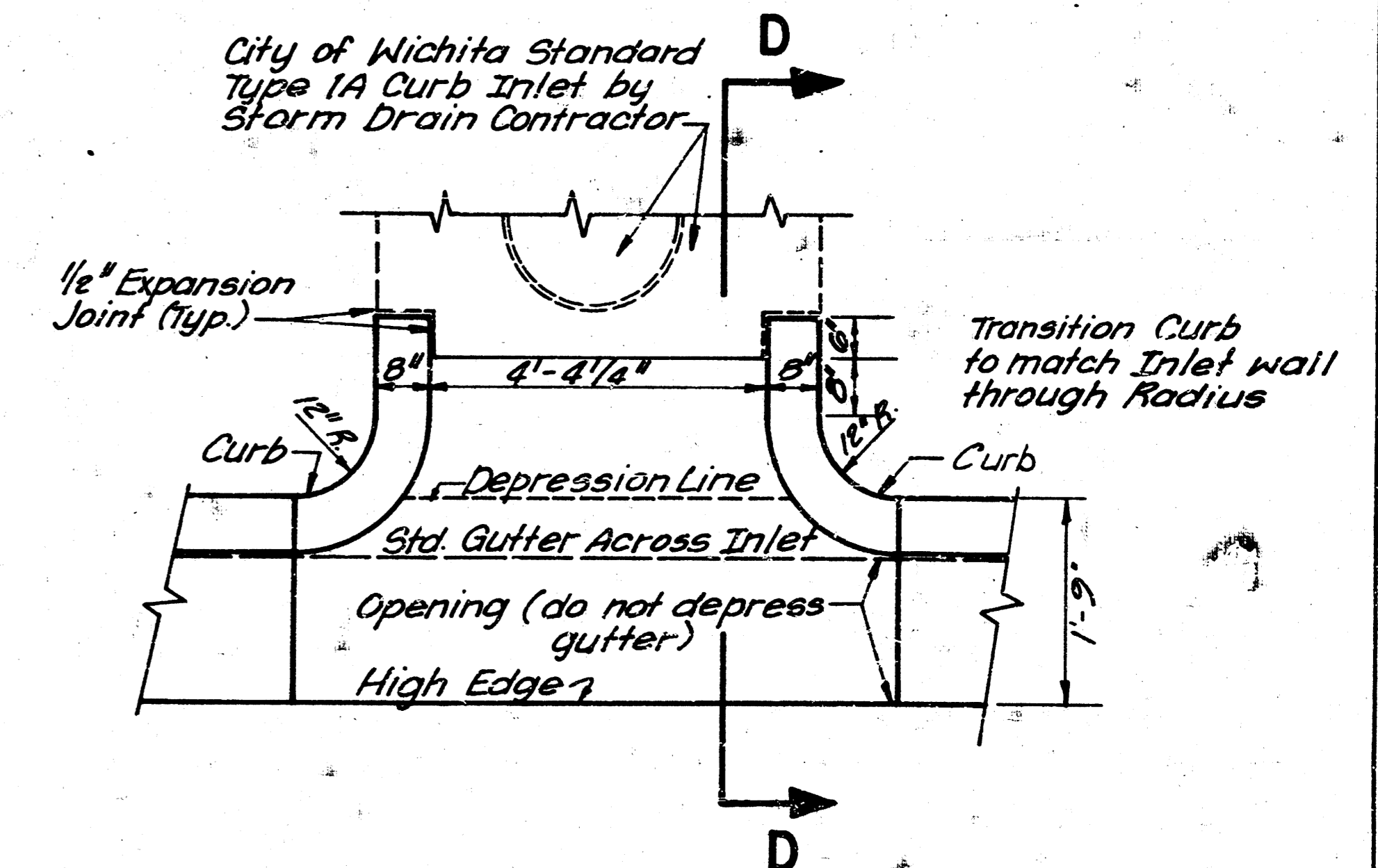
SECTION C-C



SECTION D-D



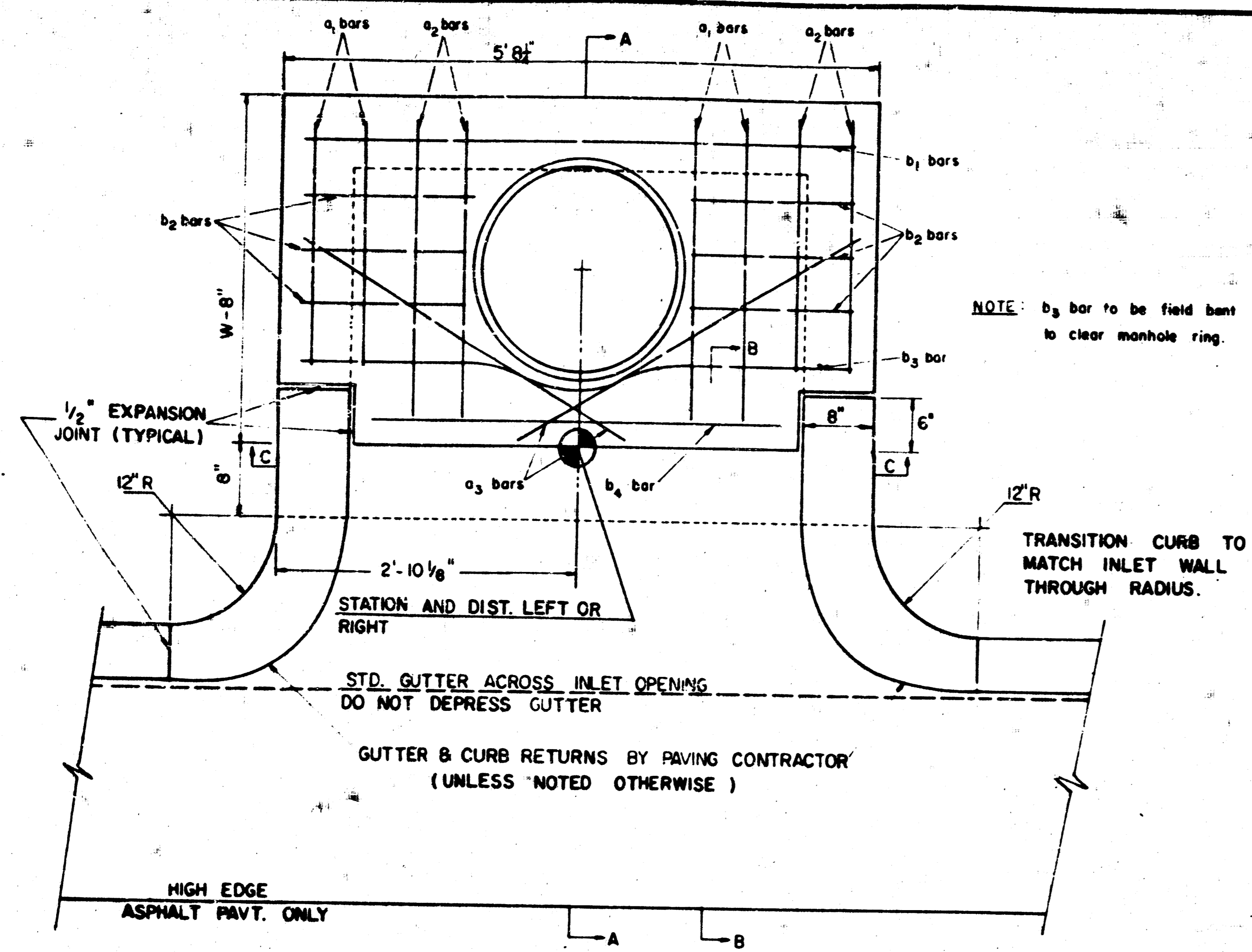
CURB & GUTTER TRANSITION DETAIL



INLET CONNECTION DETAIL

COUNTRY PLACE GREENS
 PART OF LOT 48
 COUNTRY PLACE ESTATES
TYPICAL SECTIONS & STANDARDS
 WICHITA, SEDGWICK COUNTY, KANSAS
PROFESSIONAL ENGINEERING CONSULTANTS, P.A.
 ENGINEERS
 WICHITA, KANSAS

Designed by	Checked by
Drawn by CM	Date 5-2-70 Job No. 77502-3

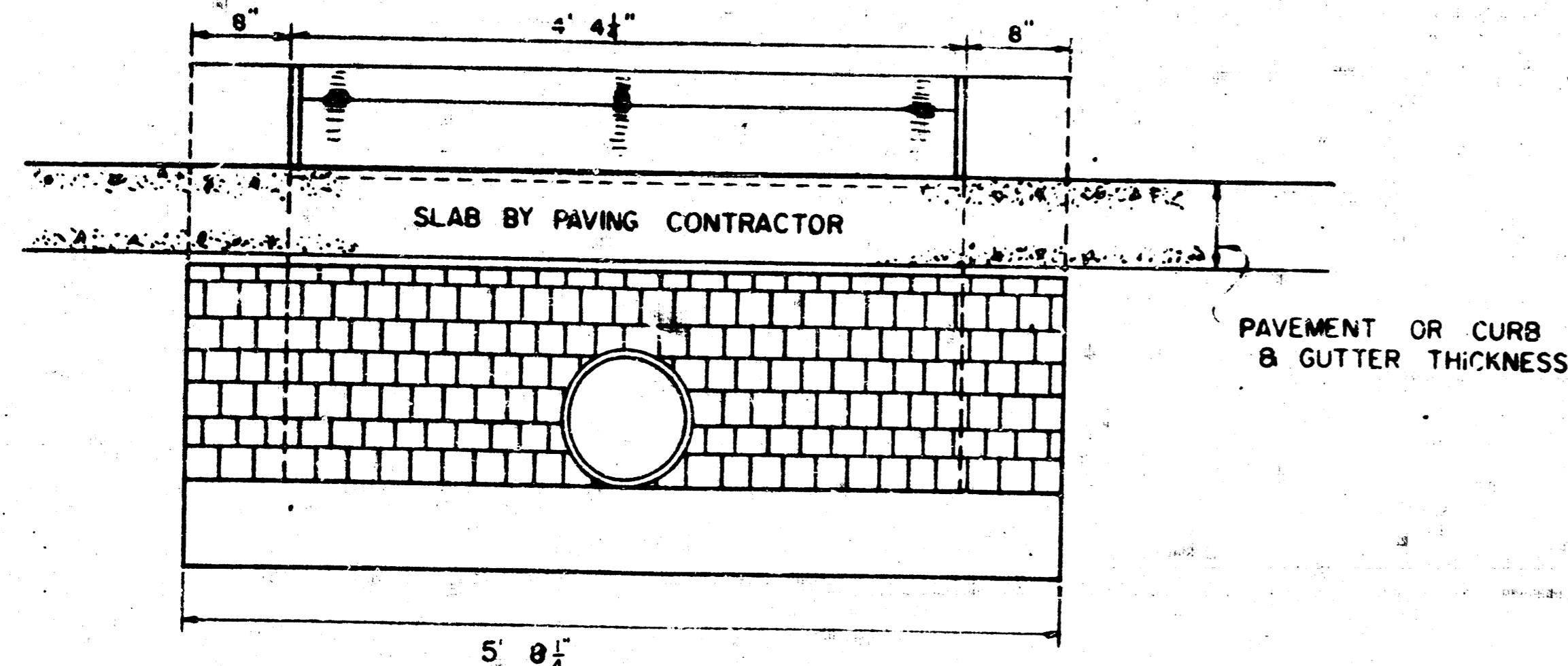


PLAN (SCALE: 1" = 1'0")

STEEL SCHEDULE

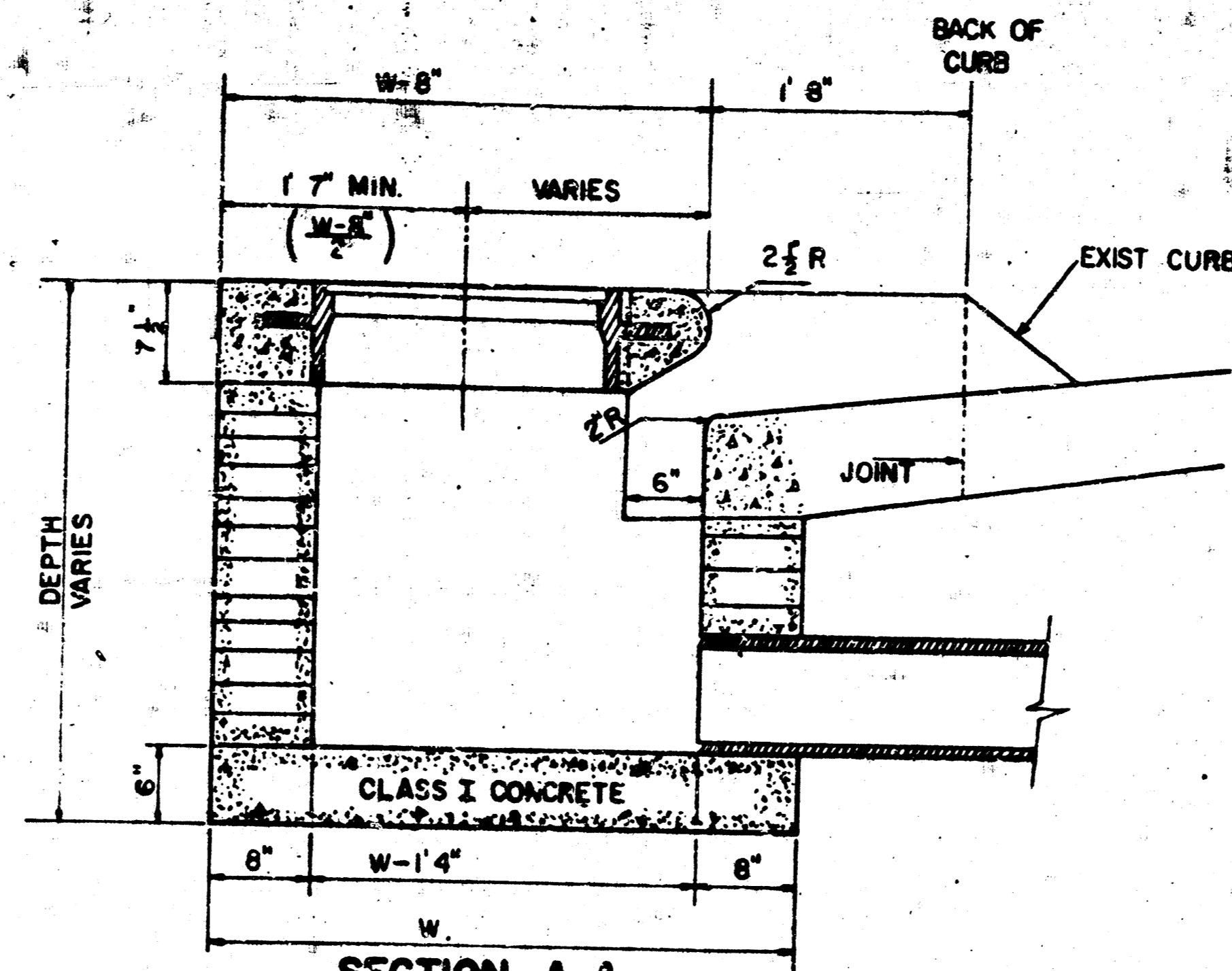
BAR NUMBER	a			b							f	d	h	WT. Lbs.
	a ₁	a ₂	a ₃	1	2	3	4	5	6	7				
SIZE	#3	#4	#4	#4	#4	#4	#4	#4	#4	#4	#4	#4	#6	
LENGTH	4' 9"	5' 9"	3' 7"	5' 5"	—	—	—	—	1' 7"	5' 6"	4' 0"	53		
	6' 9"	7' 9"	4' 7"	5' 5"	—	—	—	—	1' 7"	5' 6"	4' 0"	72		
	8' 9"	9' 9"	5' 7"	—	—	—	—	—	1' 7"	5' 6"	4' 0"	91		
	10' 9"	11' 9"	6' 7"	—	—	—	—	—	5' 5"	1' 7"	5' 6"	110		

* NOTE: a₃ BARS TO BE PLACED APPROX. 2" BELOW TOP OF INLET COVER.



SECTION C-C (SCALE: 1" = 1'0")

BRICK FOR INLET CONSTRUCTION SHALL CONFORM WITH THE LATEST REVISION OF THE AMERICAN SOCIETY FOR TESTING AND MATERIALS DESIGNATION #632 FOR MANHOLE BRICK GRADE MS.



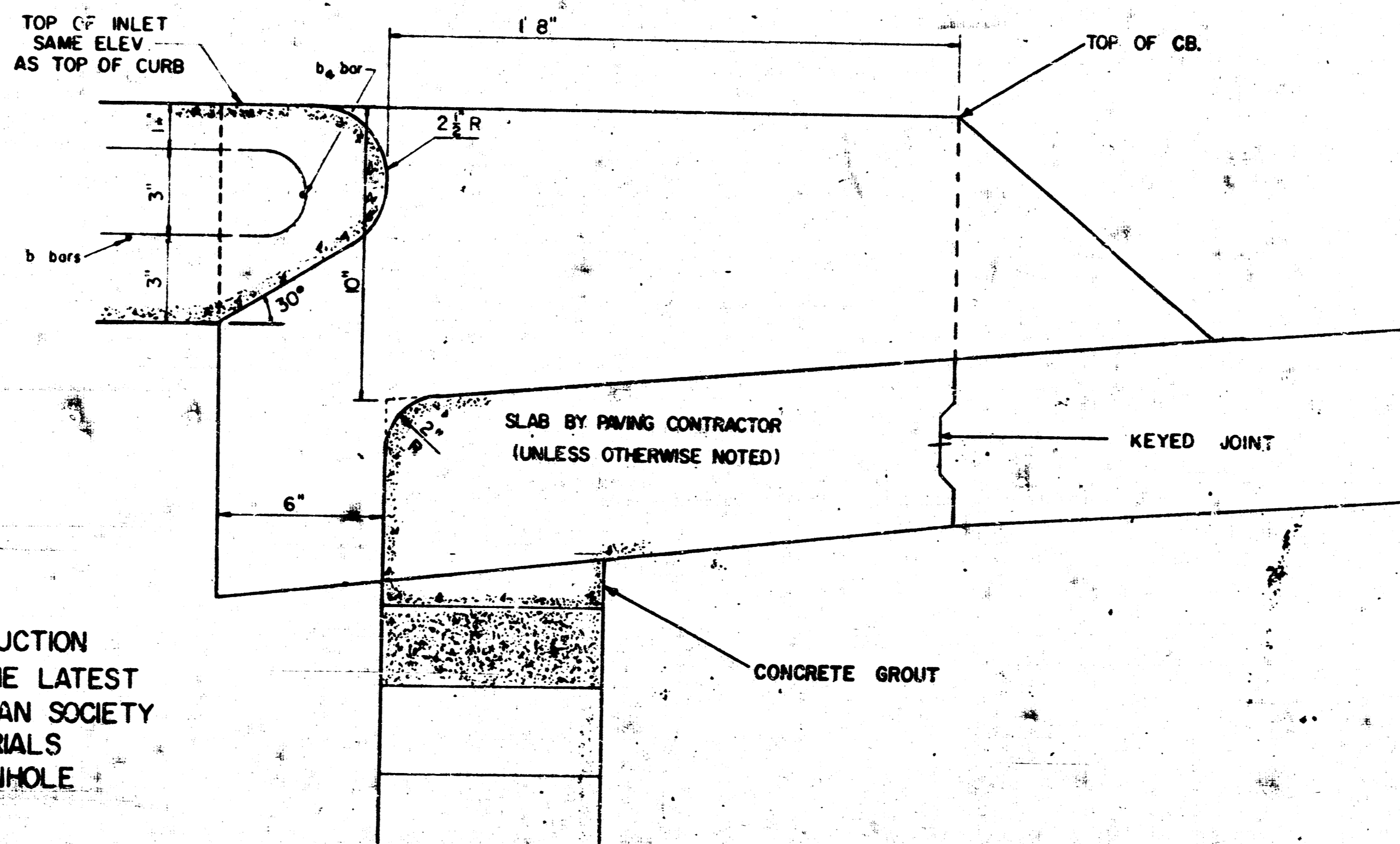
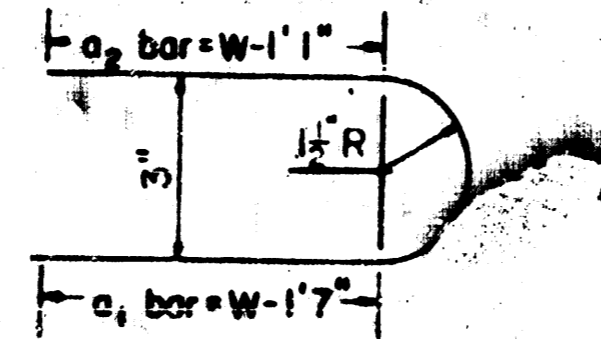
SECTION A-A (SCALE: 1" = 1'0")

W	PRE-CAST TOP SIZE	PIPE SIZE	QTY. TO CONC.
3'0"	3'2" x 5'8 1/2" x 7 1/2"	18" & SMALLER	0.42"

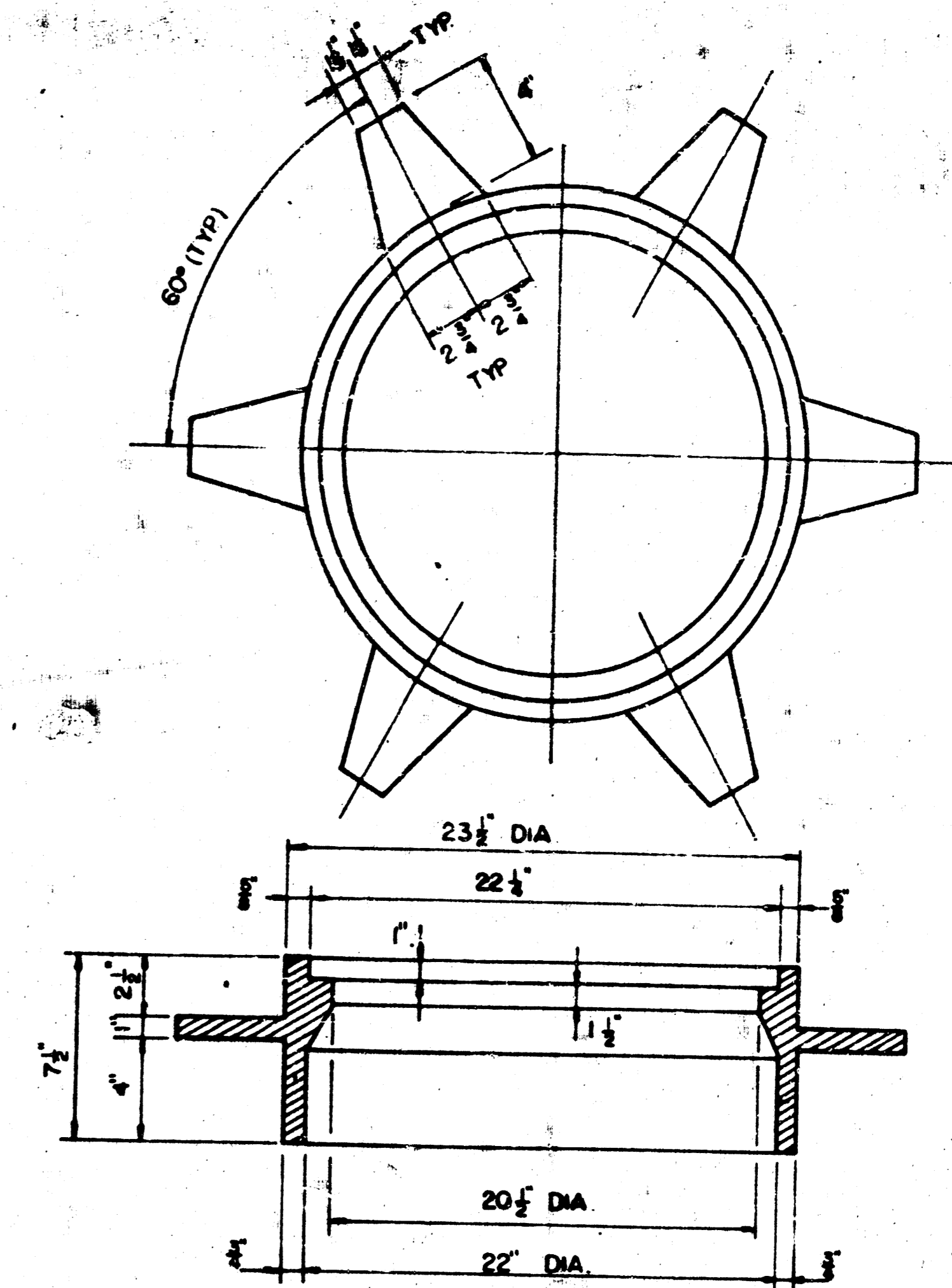
W = BASIS OF PAYMENT FOR INLETS (EACH INLET DEPTH VARIES) * GROSS VOLUME VARIES

NOTE: CONCRETE TOPS TO BE INSTALLED ON THIN MORTAR CUSHION TO INSURE FULL SUPPORT ALONG BRICK WALLS. CONCRETE TOPS MAY BE CAST IN PLACE OR PRECAST. CONCRETE FOR INLET TOPS AND FLOORS SHALL BE CLASS I CONCRETE

BENDING DIAGRAM



SECTION B-B (SCALE: 3" = 1'0")

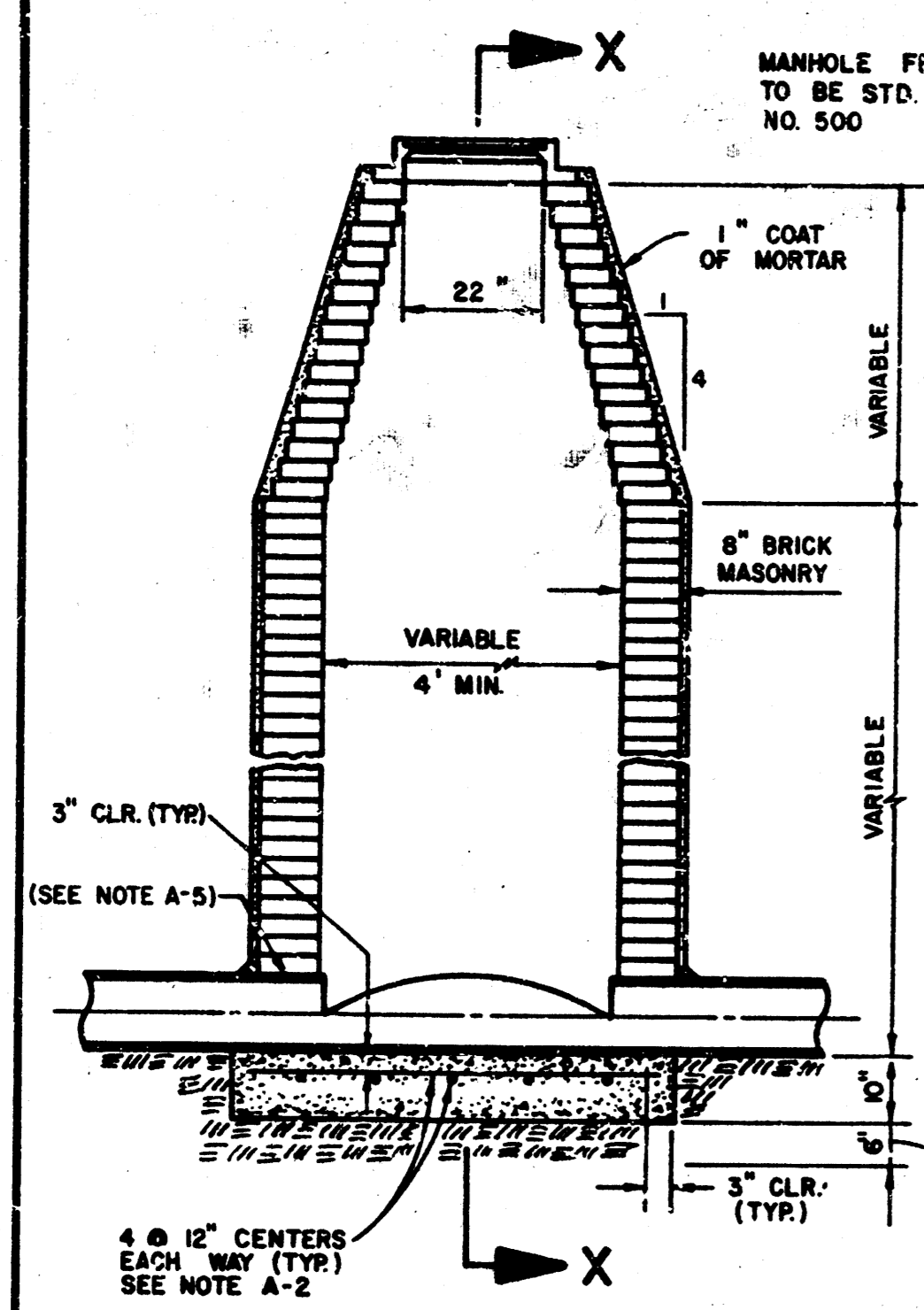


MANHOLE RING

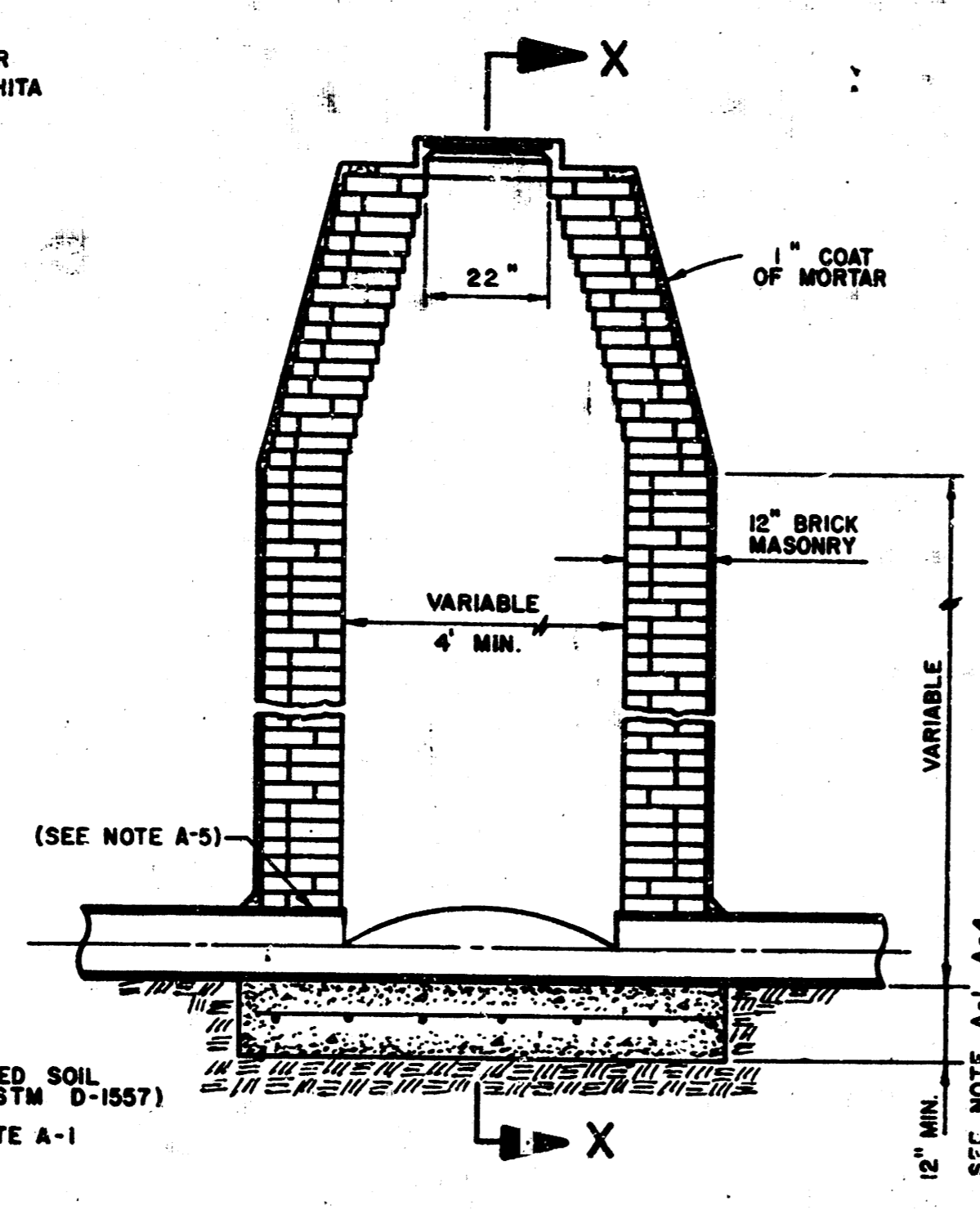
(MANHOLE COVERS TO BE EQUIVALENT TO STANDARD CITY OF WICHITA NO. 500 A)

STD. CITY OF WICHITA TYPE IA CURB INLET

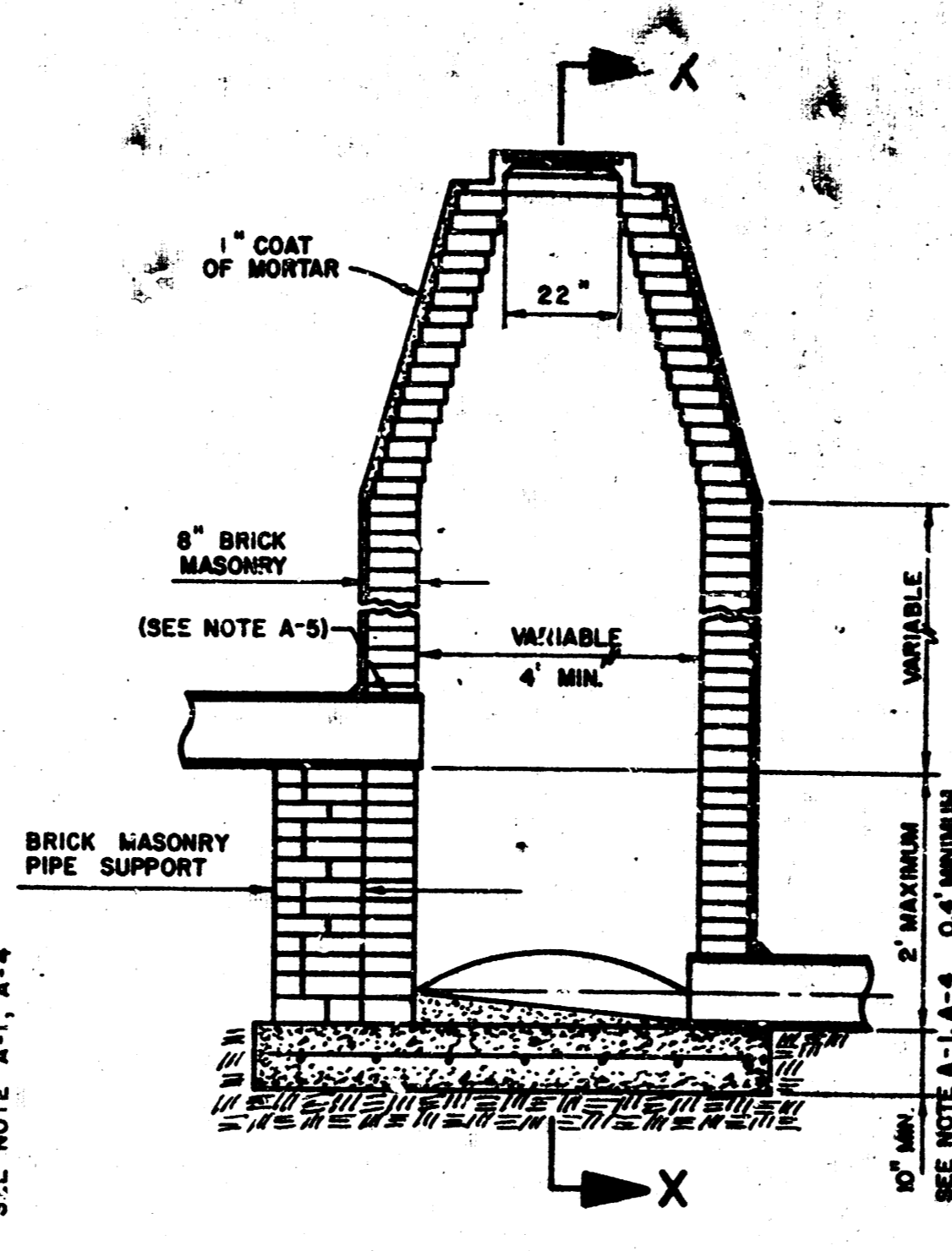
No.	Revision	By	Date
COUNTRY PLACE GREENS TYPE IA CURB INLET DETAIL PART OF LOT 48 COUNTRY PLACE ESTATES WICHITA, SEDGWICK COUNTY, KANSAS PROFESSIONAL ENGINEERING CONSULTANTS, P.A. ENGINEERS WICHITA, KANSAS			
Designed by	Job No. 77502-3	Sht. 3 of 4	
Drawn by	Date 6-12-79		



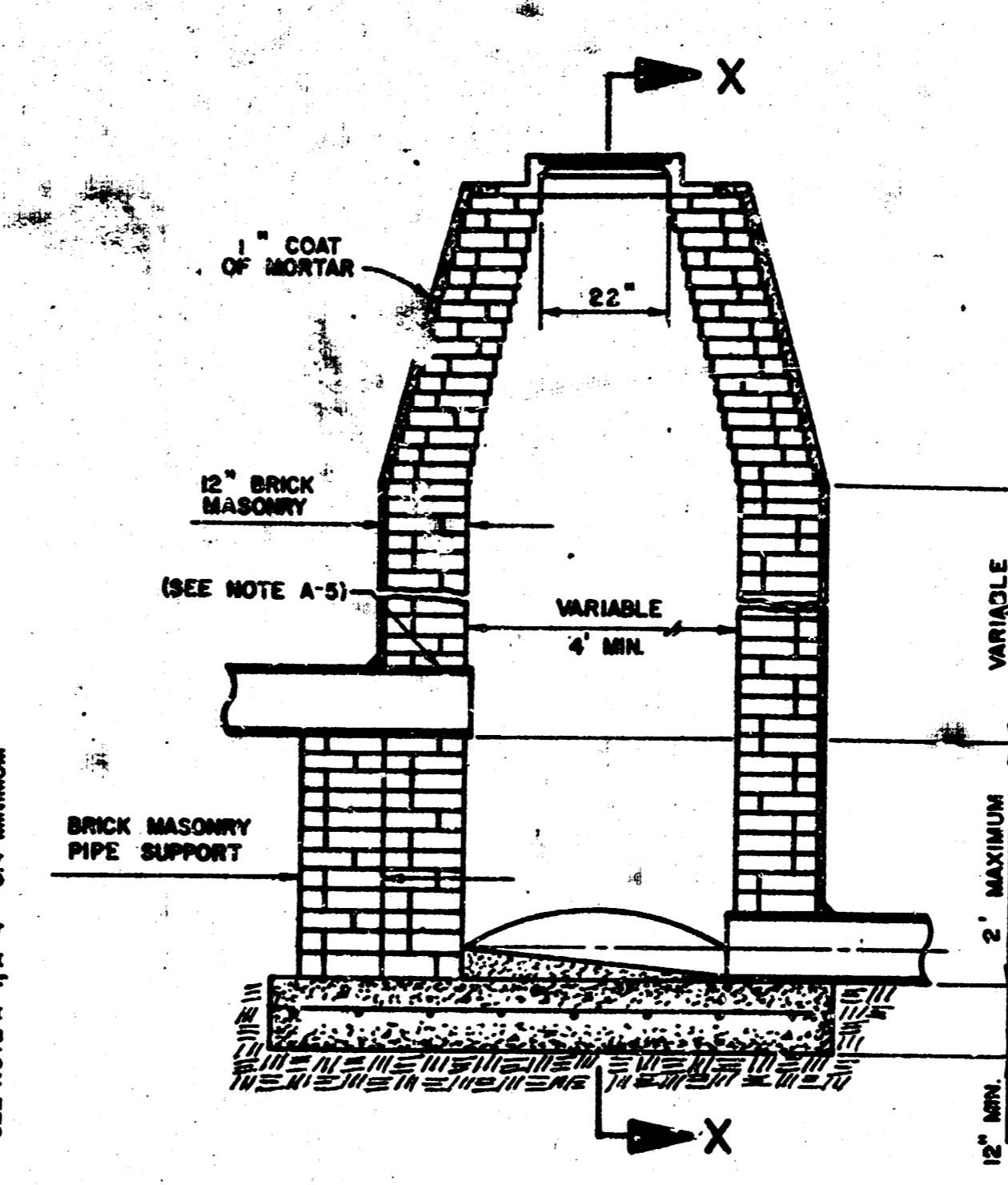
STANDARD MANHOLE TYPE A



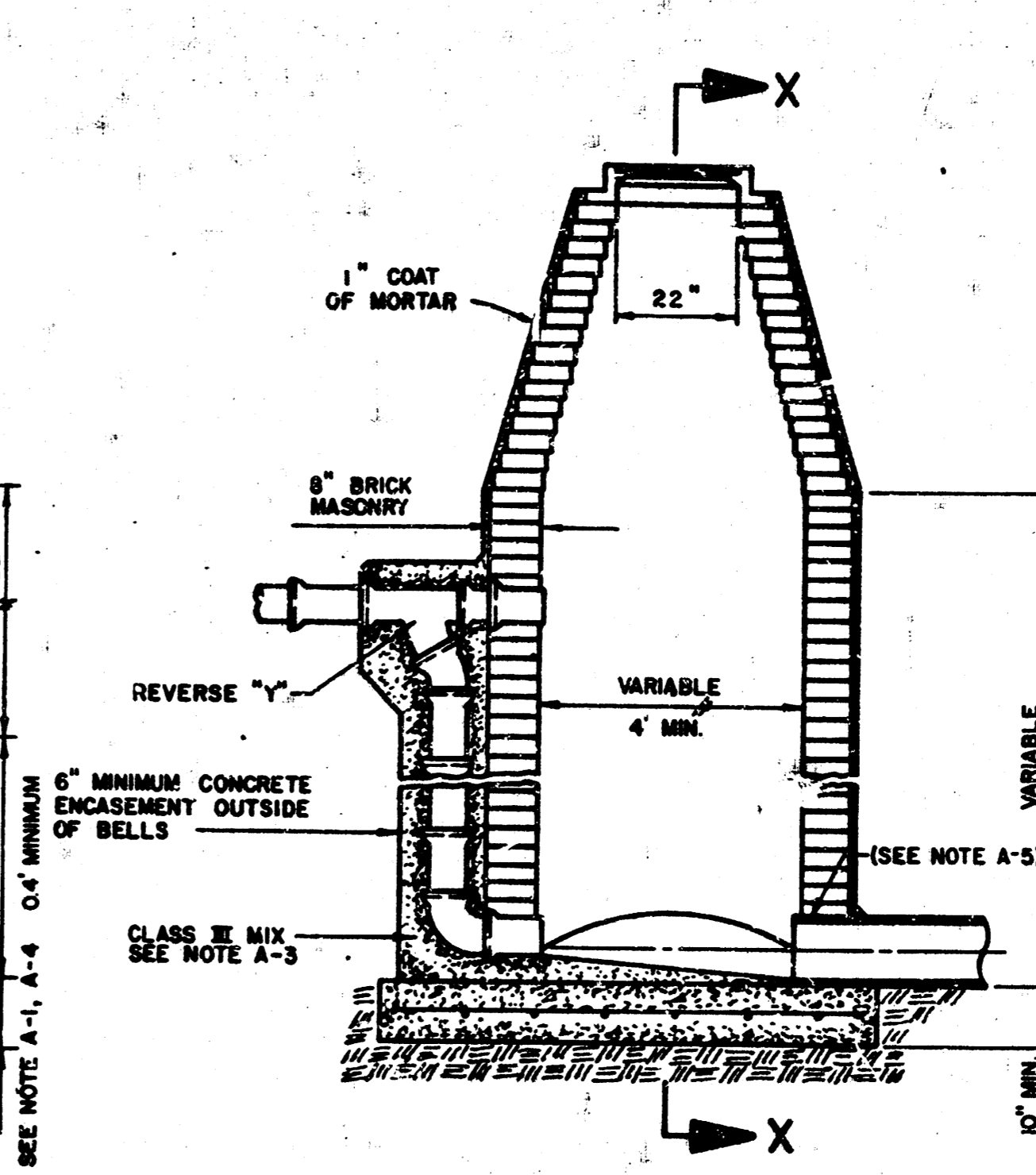
STANDARD MANHOLE TYPE AA



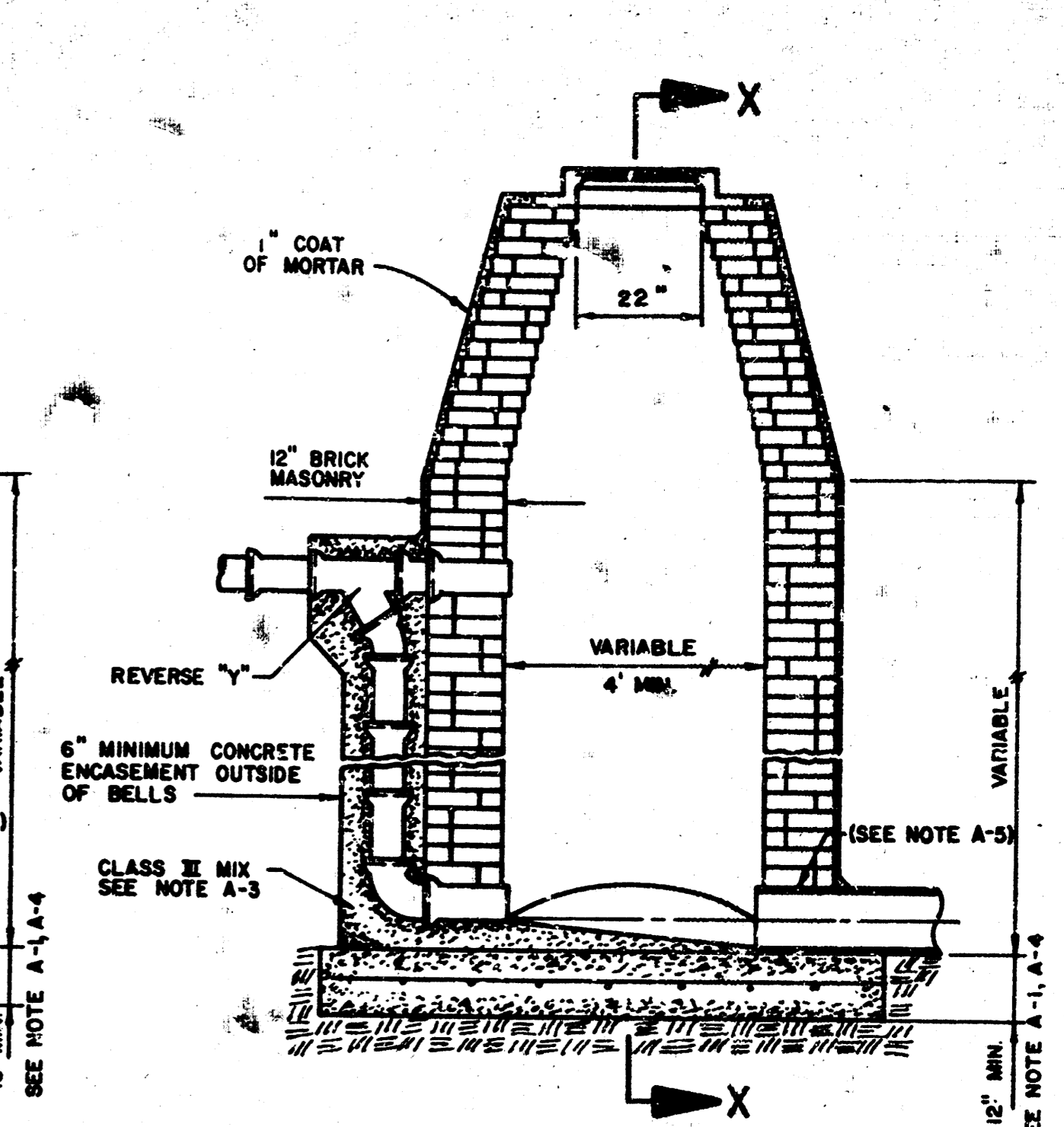
DROP MANHOLE TYPE B



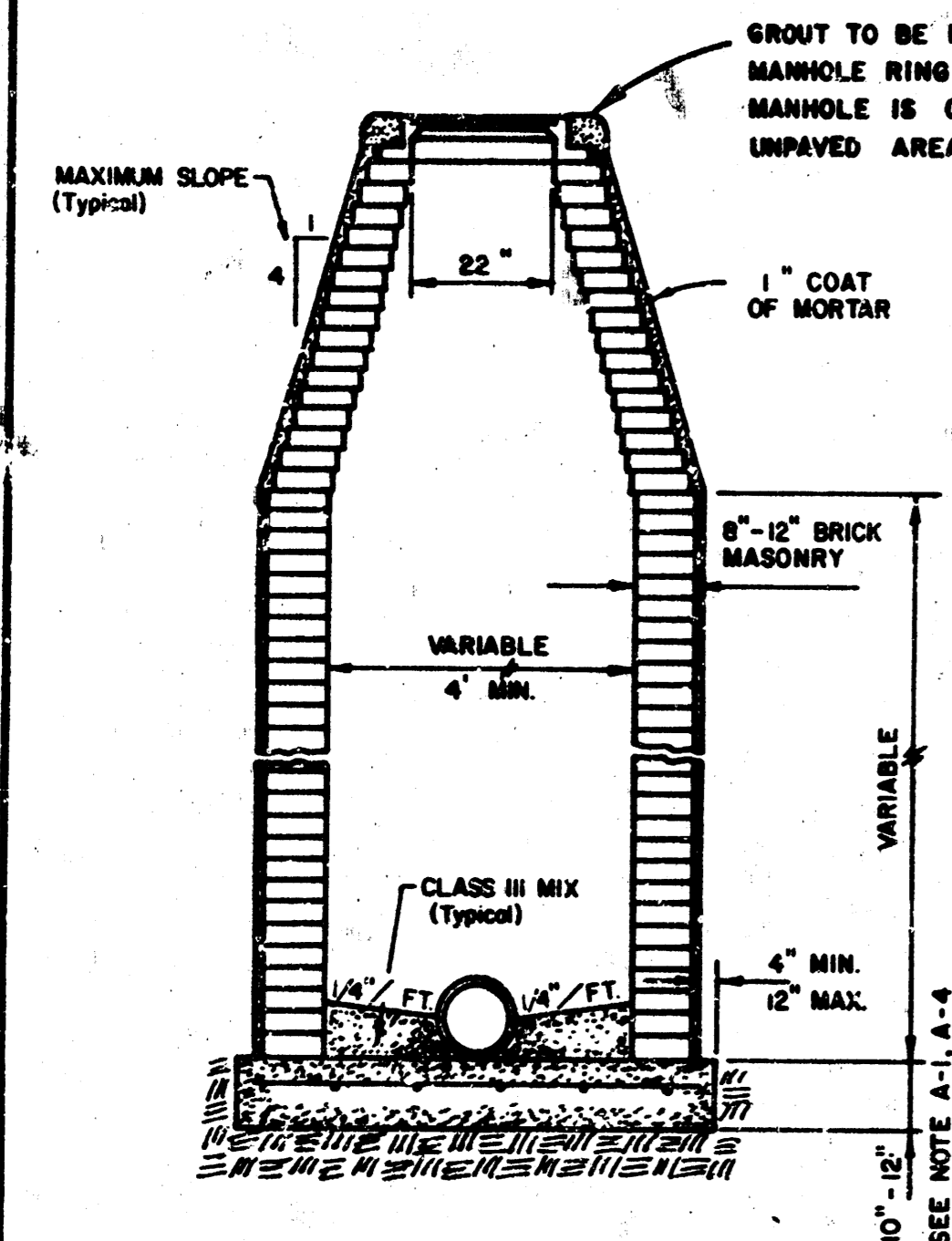
DROP MANHOLE TYPE BB



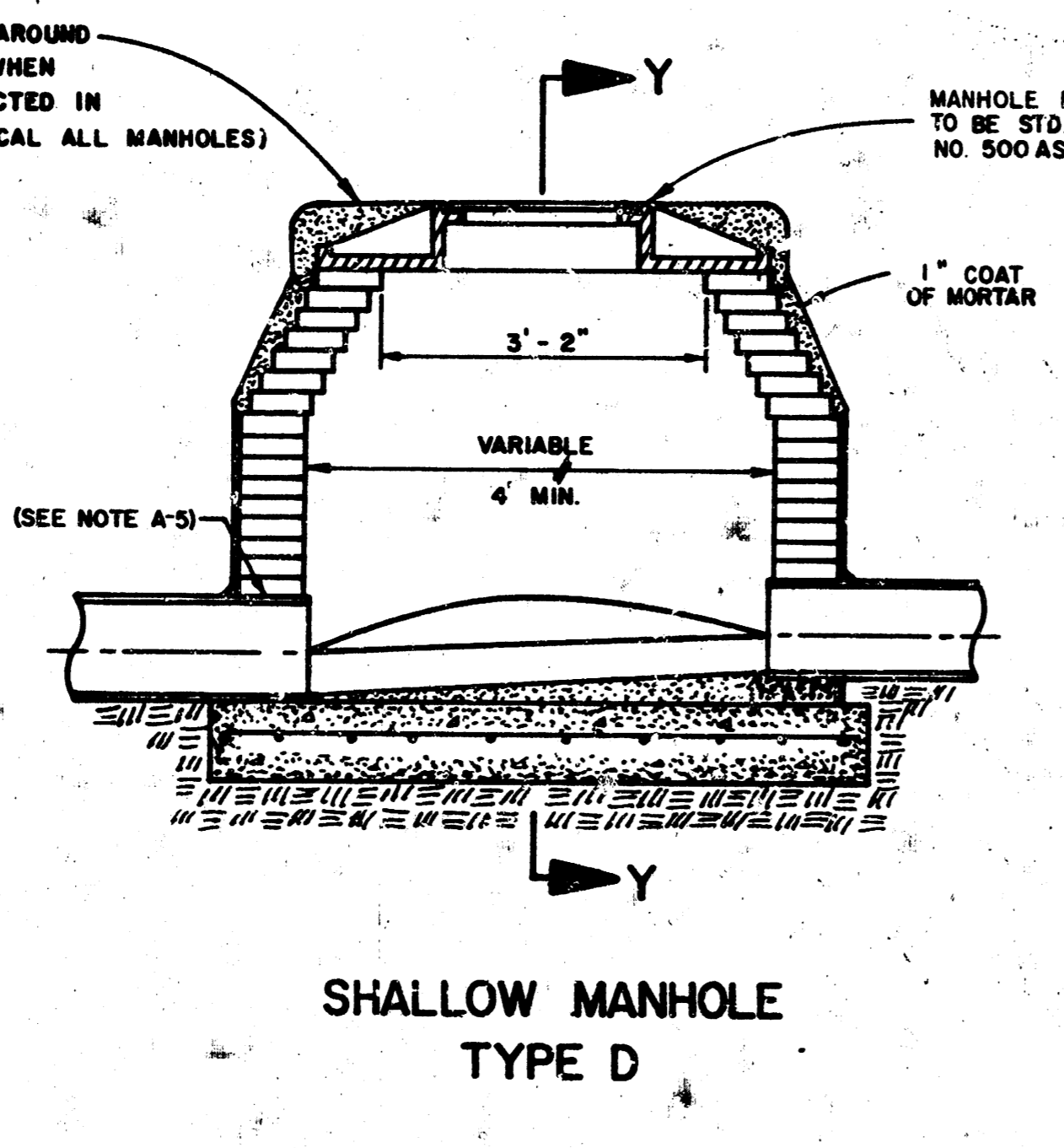
OUTSIDE DROP MANHOLE TYPE C



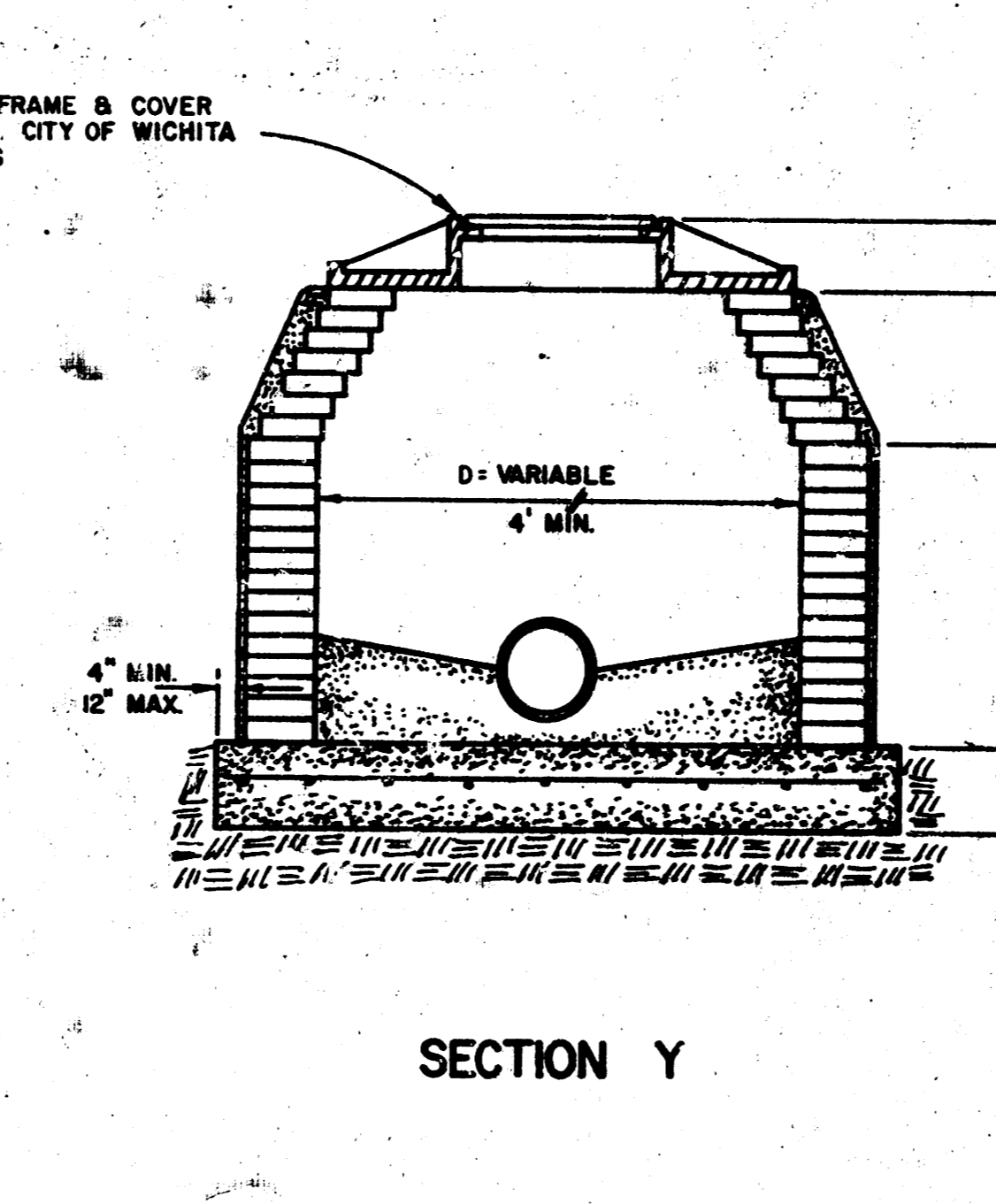
OUTSIDE DROP MANHOLE TYPE CC



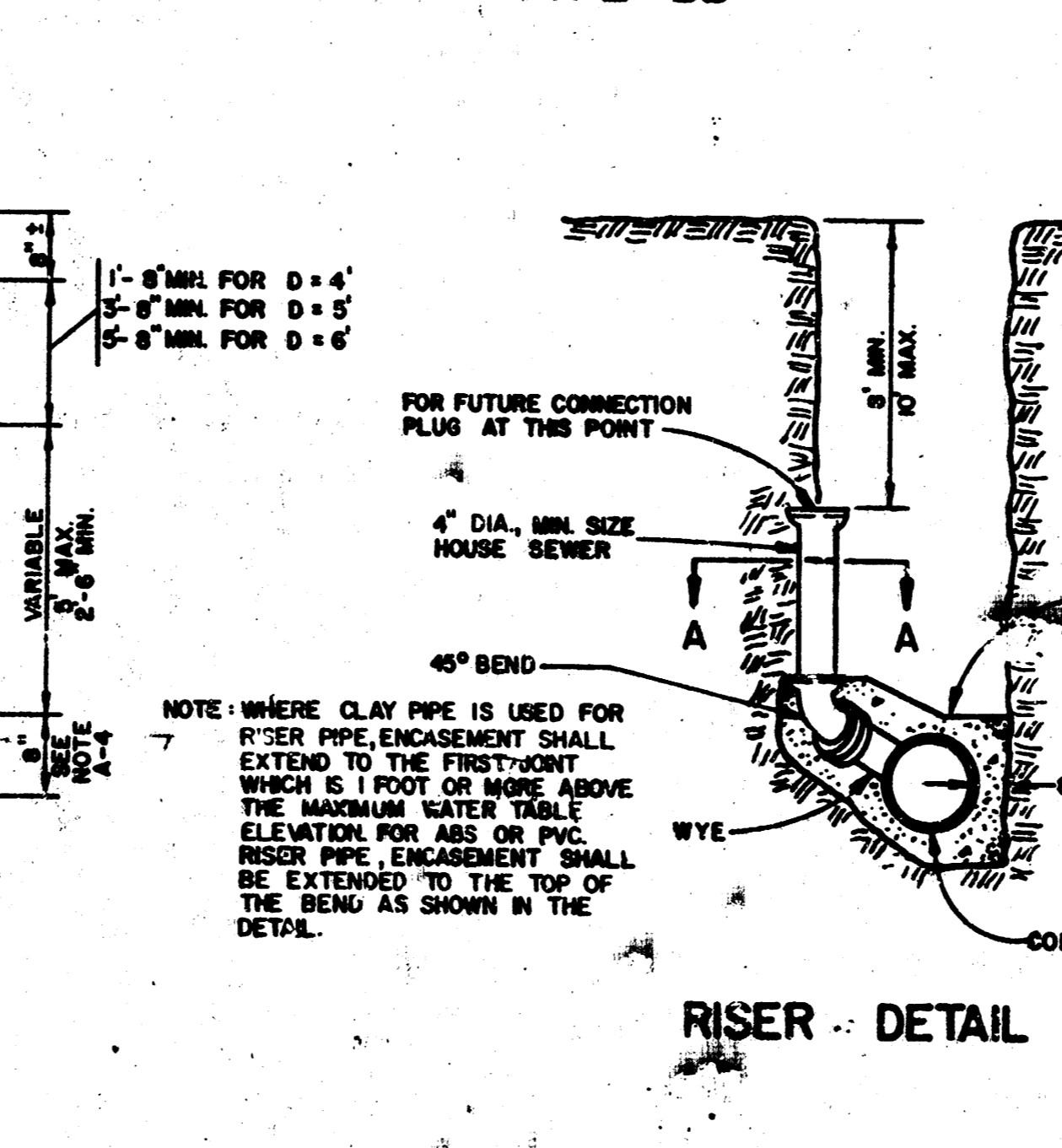
SECTION X



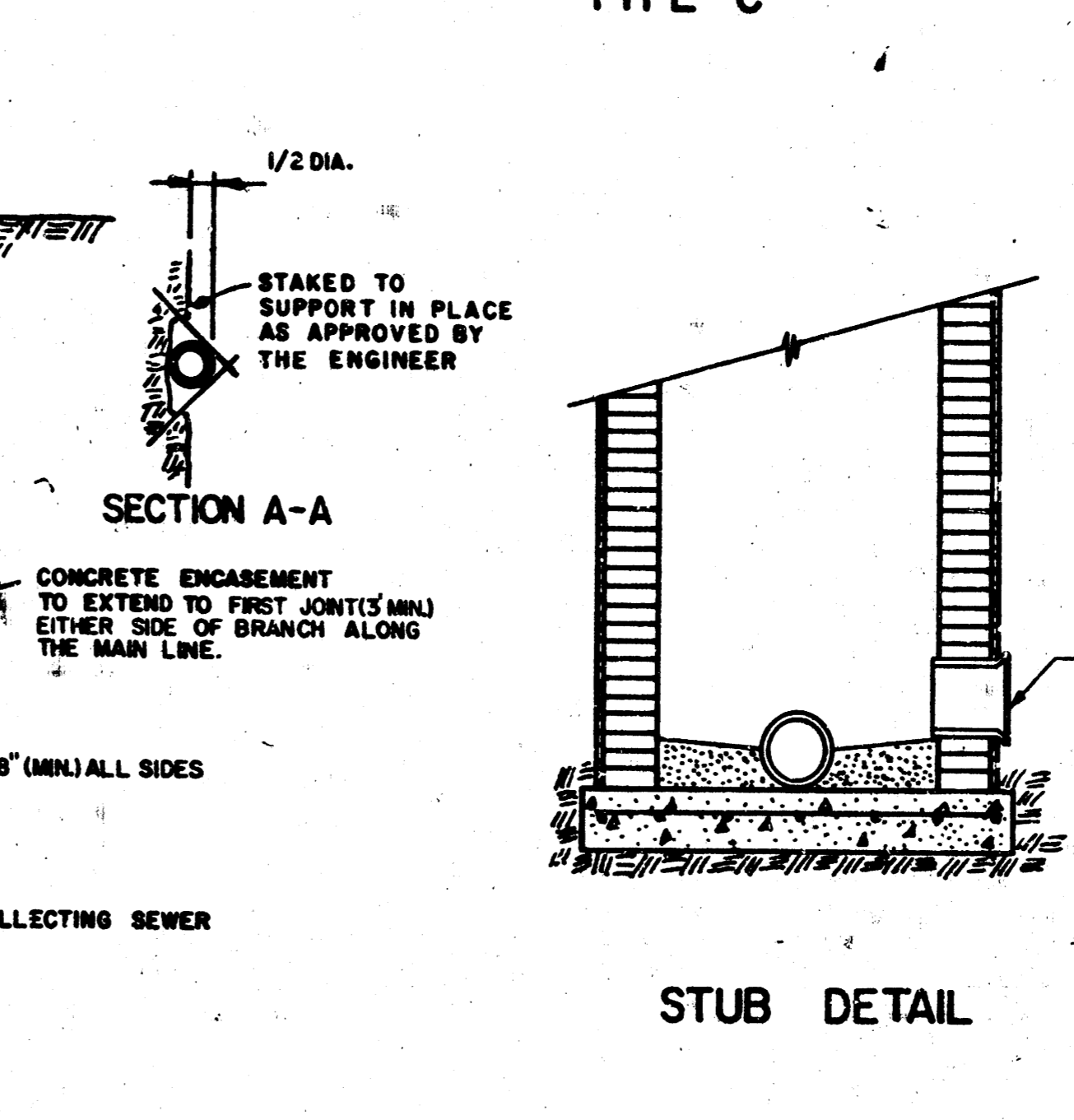
SHALLOW MANHOLE TYPE D



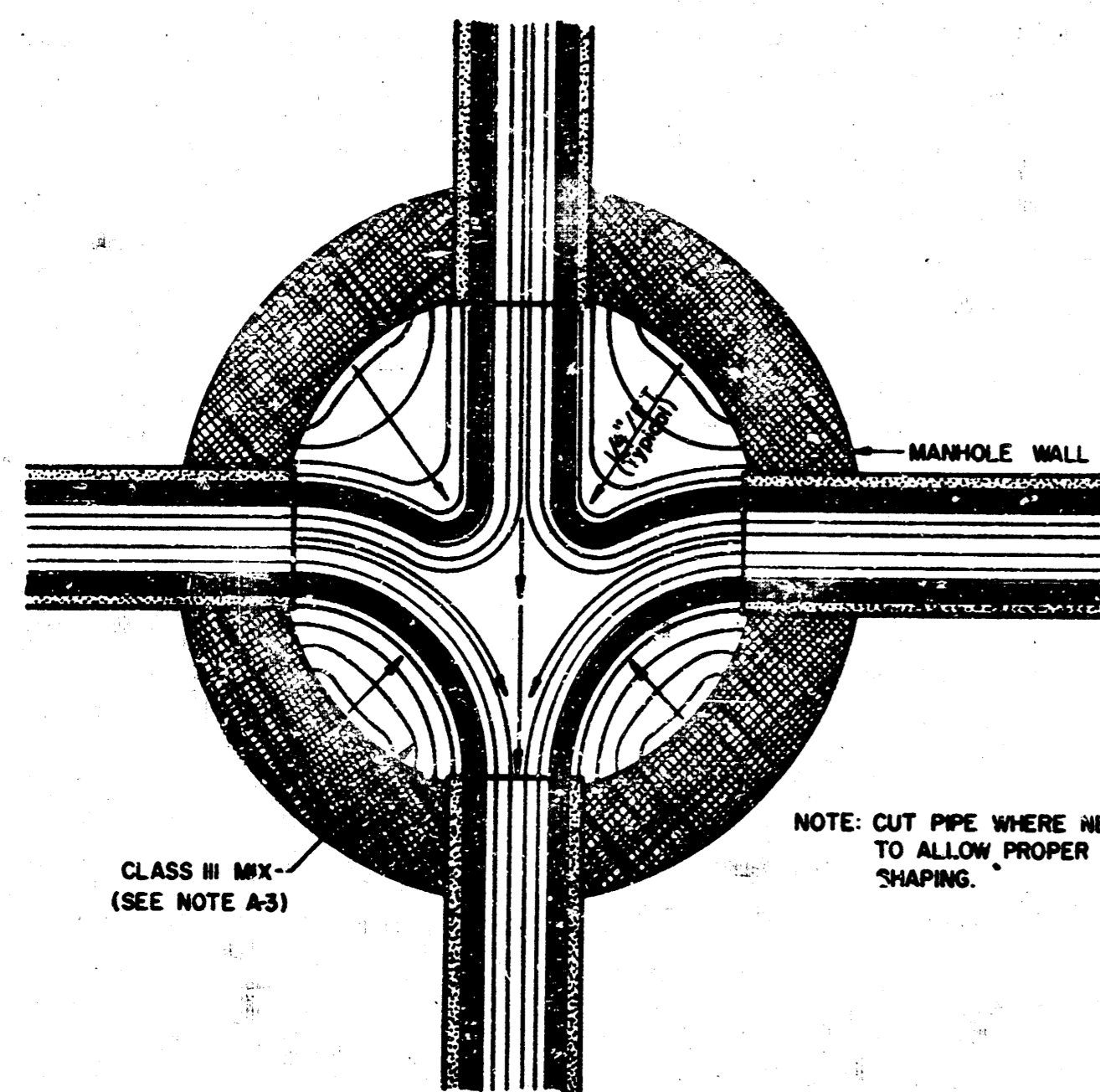
SECTION Y



RISER DETAIL



STUB DETAIL



TYPICAL MANHOLE FLOOR SHAPING

NOTE: CUT PIPE WHERE NECESSARY TO ALLOW PROPER FLOOR SHAPING.

NOTES

1. IF, IN THE OPINION OF THE ENGINEER, THE MANHOLE SUBGRADE APPEARS UNSTABLE, THE CONTRACTOR HAS THE OPTION TO COMPACT SUBGRADE AS SHOWN OR INCREASE THE THICKNESS OF THE MANHOLE BASE AS DIRECTED BY THE ENGINEER.
2. STEEL REINFORCING IS REQUIRED IN ALL MANHOLE BASES.
3. MORTAR USED IN MASONRY CONSTRUCTION TO BE CLASS III MIX.
4. ALL MANHOLE BASES TO BE CLASS I MIX.
5. APPROVED FLEXIBLE WATERSTOP GASKETS SHALL BE INSTALLED TO JOIN THE SEWER TO THE MANHOLE WALL WHEN A.B.S., COMPOSITE PIPE, POLYETHYLENE PIPE, OR P.V.C. PIPE IS USED. FOR OTHER TYPES OF PIPE THE SEWER EXTENDING FROM MANHOLES SHALL BE SUPPORTED WITH CONCRETE TO THE FIRST JOINT OF PIPE FROM THE MANHOLE WALL. CONCRETE SUPPORTS MAY BE DELETED PROVIDED AN APPROVED FLEXIBLE WATERSTOP GASKET IS INSTALLED TO JOIN THE SEWER TO THE MANHOLE WALL.
6. PIPE PLUGS SHALL BE AS MANUFACTURED BY PIPE SUPPLIER WHEN AVAILABLE.

No.	Revision	By	Date
COUNTRY PLACE GREENS			
PROFESSIONAL ENGINEERING CONSULTANTS, P.A.			
ENGINEERS WICHITA, KANSAS			
Designed by	Job No.	Date	
Drawn by			

