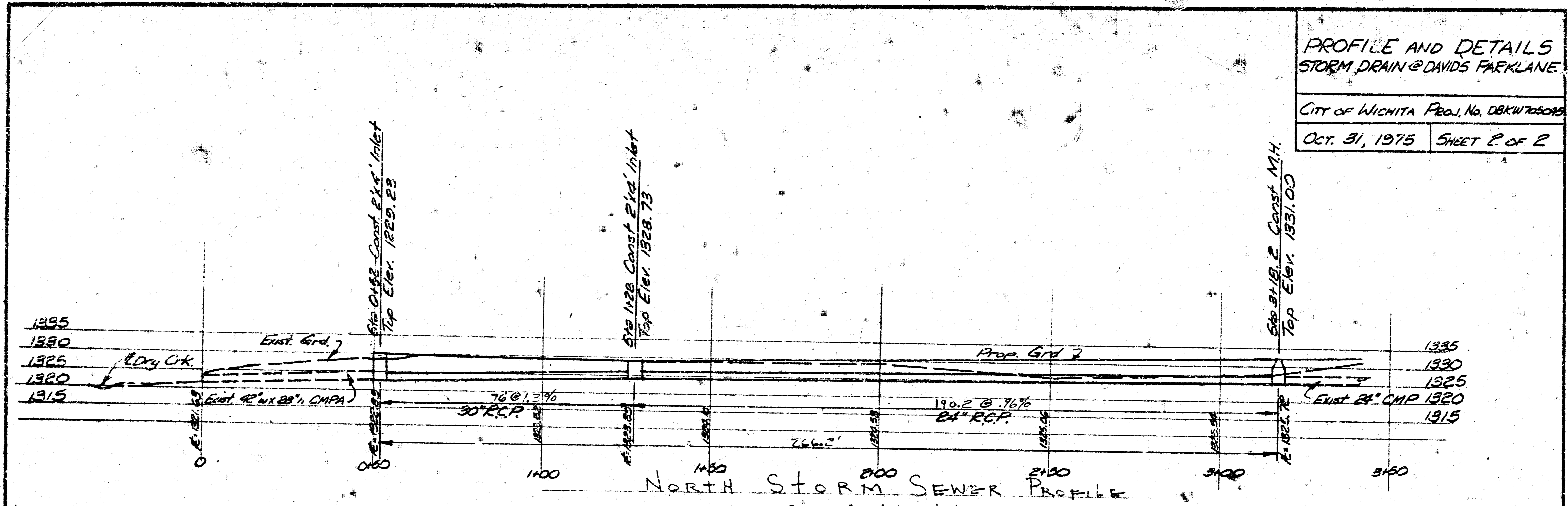


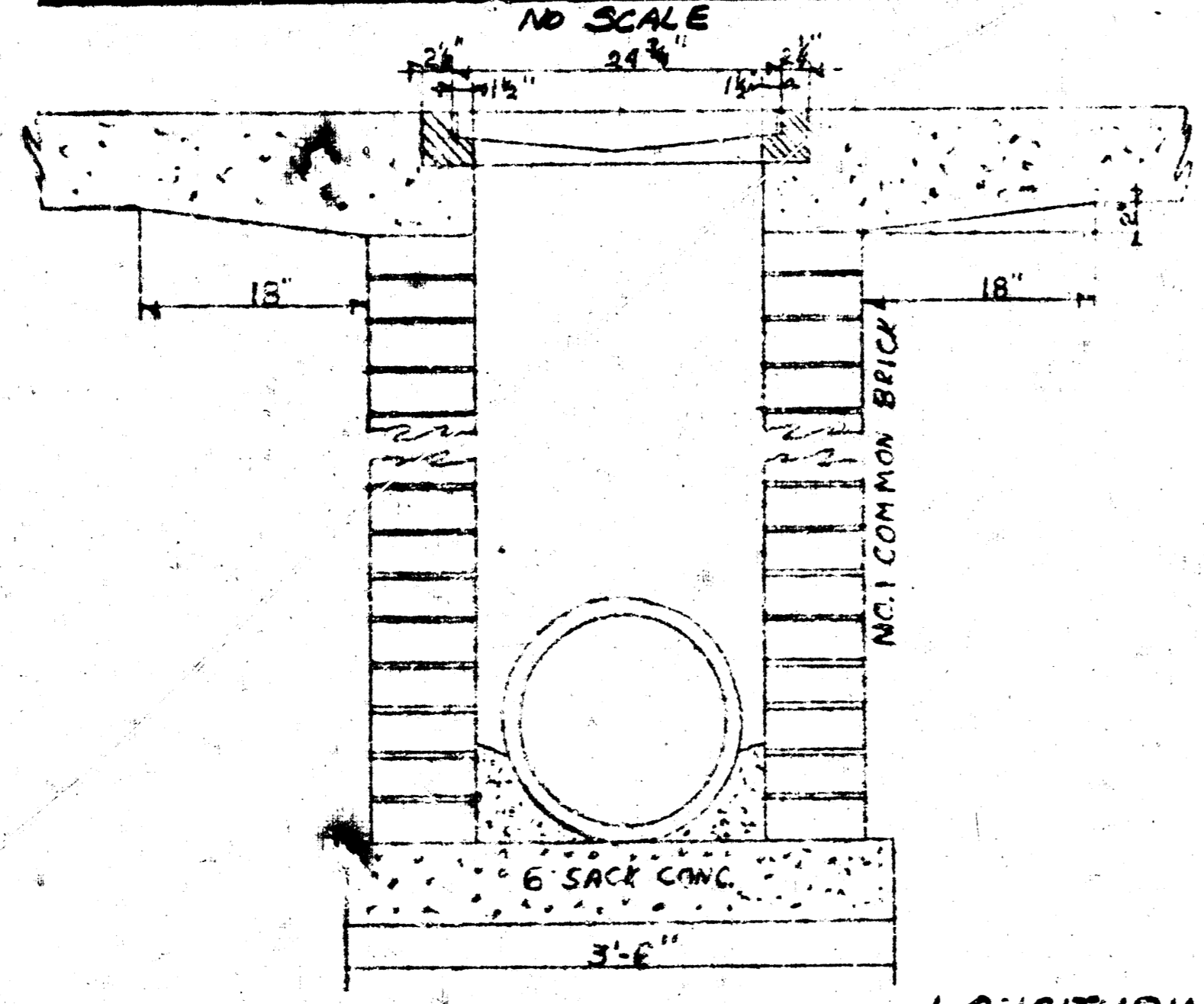
PROFILE AND DETAILS  
STORM DRAIN @ DAVIDS PARKLANE

CITY OF WICHITA Proj. No. DBKWT0507

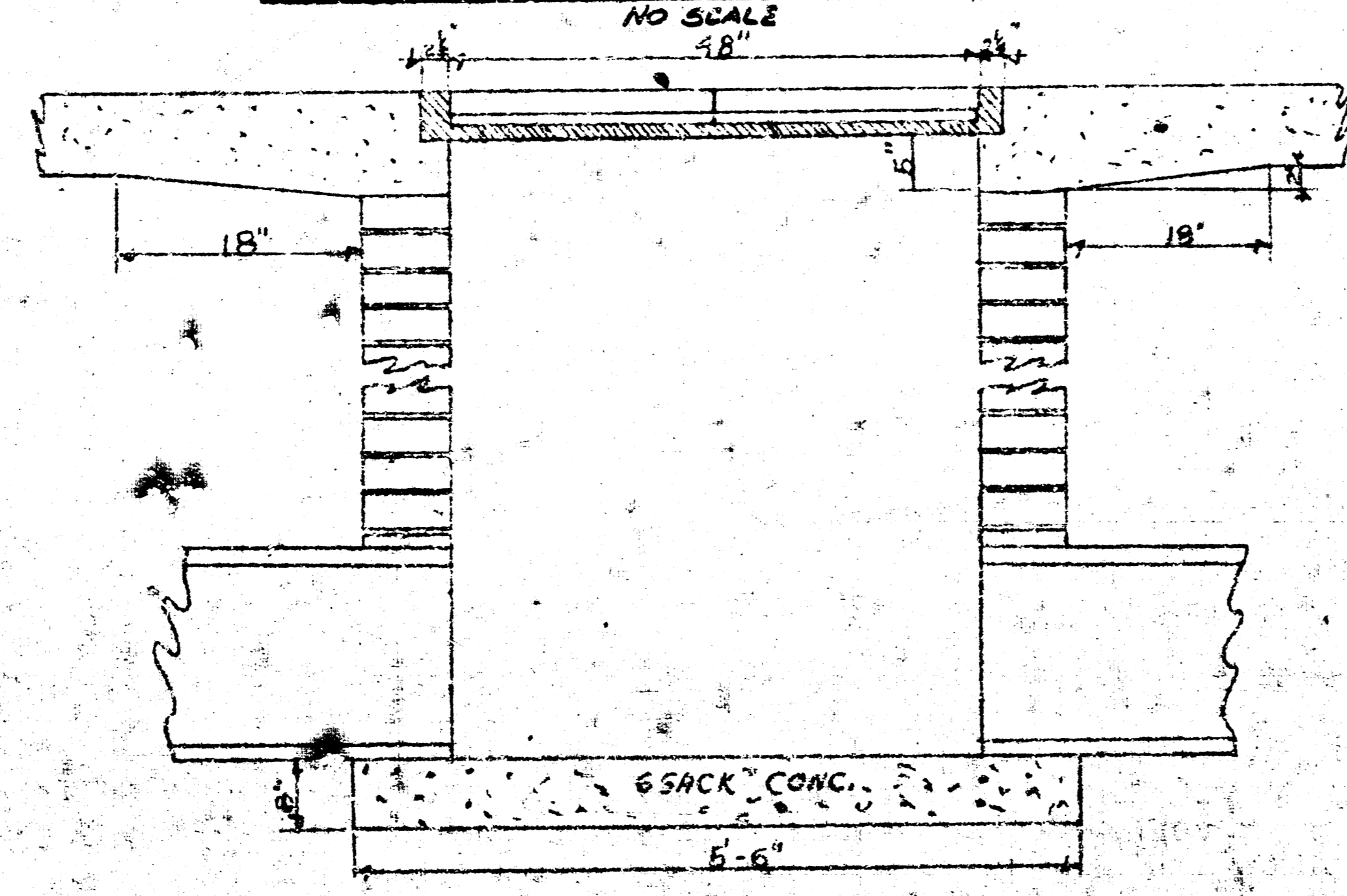
OCT. 31, 1975 SHEET 2 OF 2



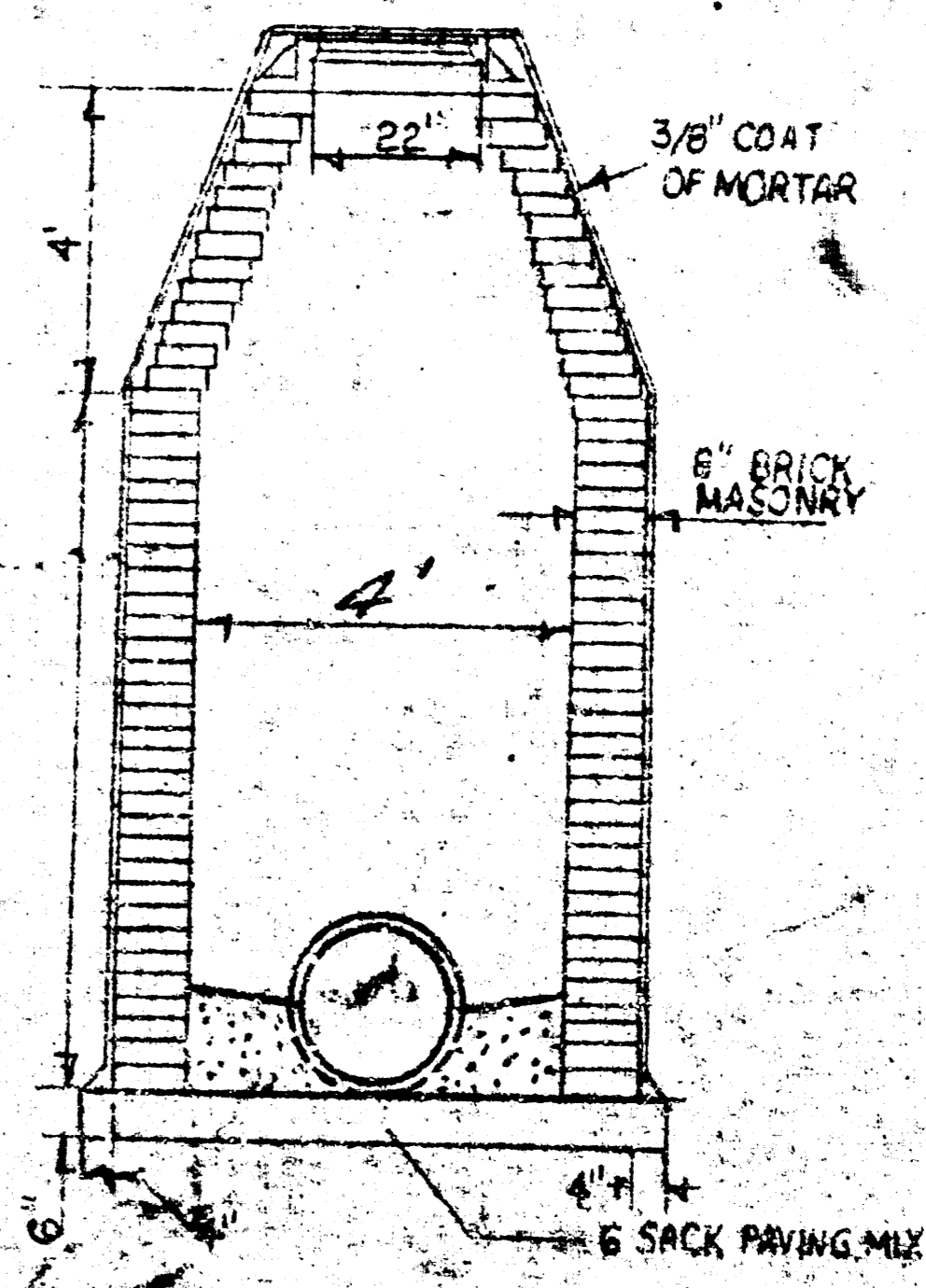
TRANSVERSE SECTION - STD DROP INLET



LONGITUDINAL SECTION - STD DROP INLET



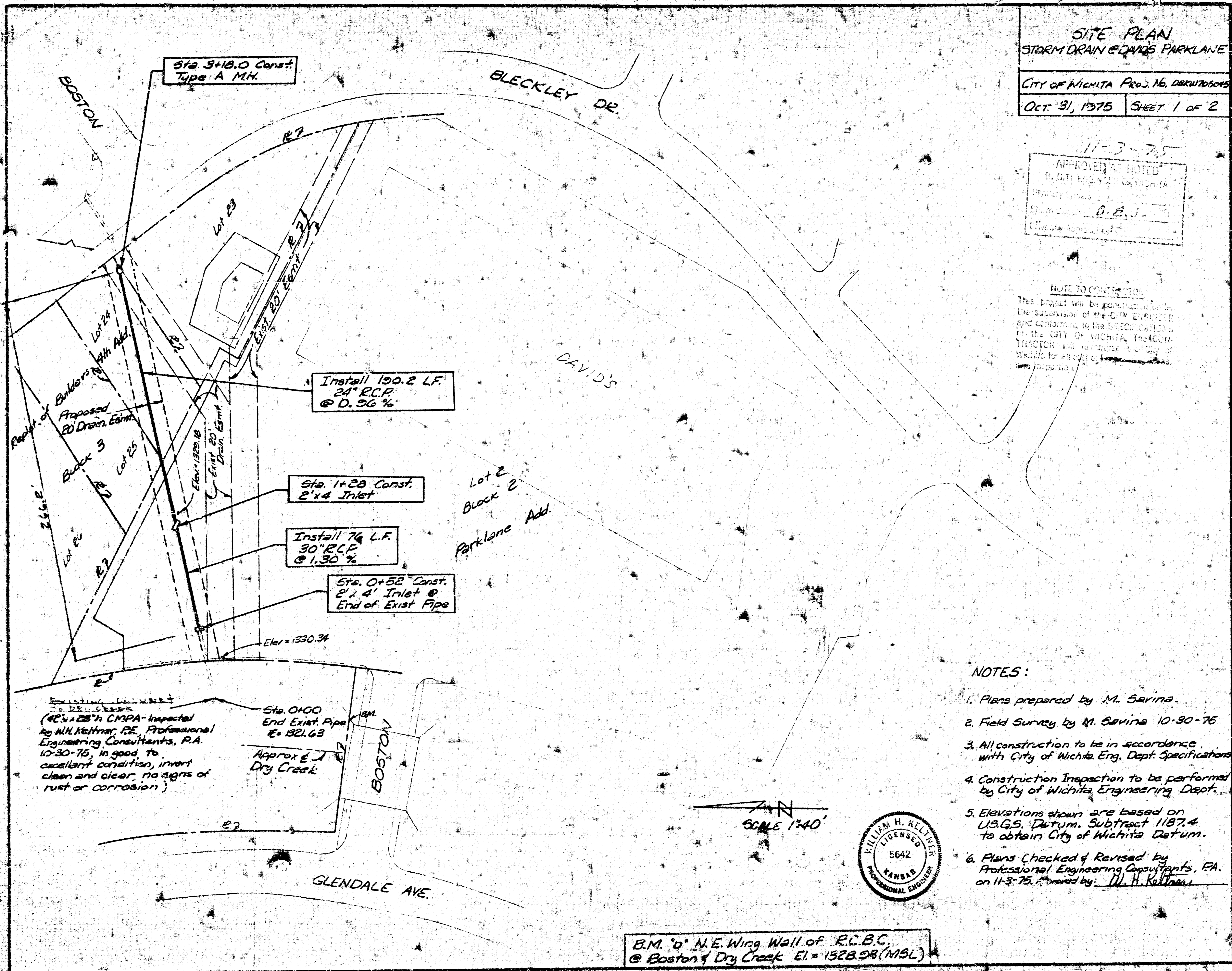
SECTION - STD. TYPE "A" MANHOLE



**SITE PLAN**  
**STORM DRAIN @ DAVID'S PARKLANE**  
 CITY OF WICHITA PROJ. NO. DSKW75005  
 OCT. 31, 1975 SHEET 1 OF 2

11-3-75  
 APPROVED & NOTED  
 BY CITY ENGINEER  
 CITY OF WICHITA  
 SIGNATURE: O.E.J.  
 EXPIRES: 11-3-76

**NOTE TO CONTRACTOR**  
 This project will be constructed under the supervision of the CITY ENGINEER and conforming to the SPECIFICATIONS of the CITY OF WICHITA, THE 4000 TRACTOR will be used by City of Wichita for all of the work.



- NOTES:**
1. Plans prepared by M. Savina.
  2. Field Survey by M. Savina 10-30-75
  3. All construction to be in accordance with City of Wichita Eng. Dept. Specifications
  4. Construction Inspection to be performed by City of Wichita Engineering Dept.
  5. Elevations shown are based on U.S.G.S. Datum. Subtract 1187.4 to obtain City of Wichita Datum.
  6. Plans Checked & Revised by Professional Engineering Consultants, P.A. on 11-3-75. Approved by: W. H. Keltner

B.M. "d" N.E. Wing Wall of R.C.B.C.  
 @ Boston & Dry Creek El. = 1328.28 (MSL)