

BENCHMARK
 □ TOP OF INLET
 8.5' N x 9' W
 OF N.W. PROP. COR.
 ELEV. = 183.80
 CITY DATUM

STA 0+00
 CONNECT TO
 EXISTING MANHOLE

CAUTION
 SANITARY
 CROSSING

STA 0+43
 CONSTRUCT STD.
 2'x4' DROP INLET.
 2 - GRATES
 TOP ELEV. 182.00
 181.90

STA 3+60.30
 CONSTRUCT STD.
 2'x4' DROP INLET.
 2 - GRATES
 TOP ELEV. 180.33 - .40

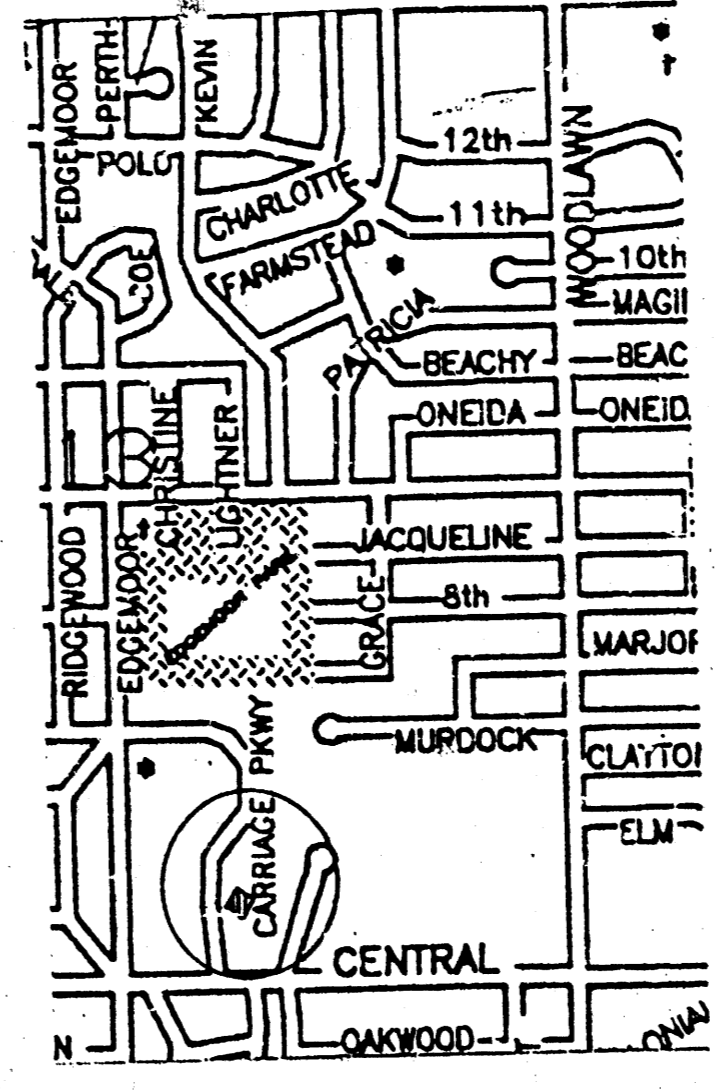
STA 5+85-84.85
 CONSTRUCT STD.
 2'x4' DROP INLET.
 2 - GRATES
 TOP ELEV. 183.33
 183.37

SCALE:
 1" = 40' HORIZONTAL
 1" = 5' VERTICAL
 ● = IRON

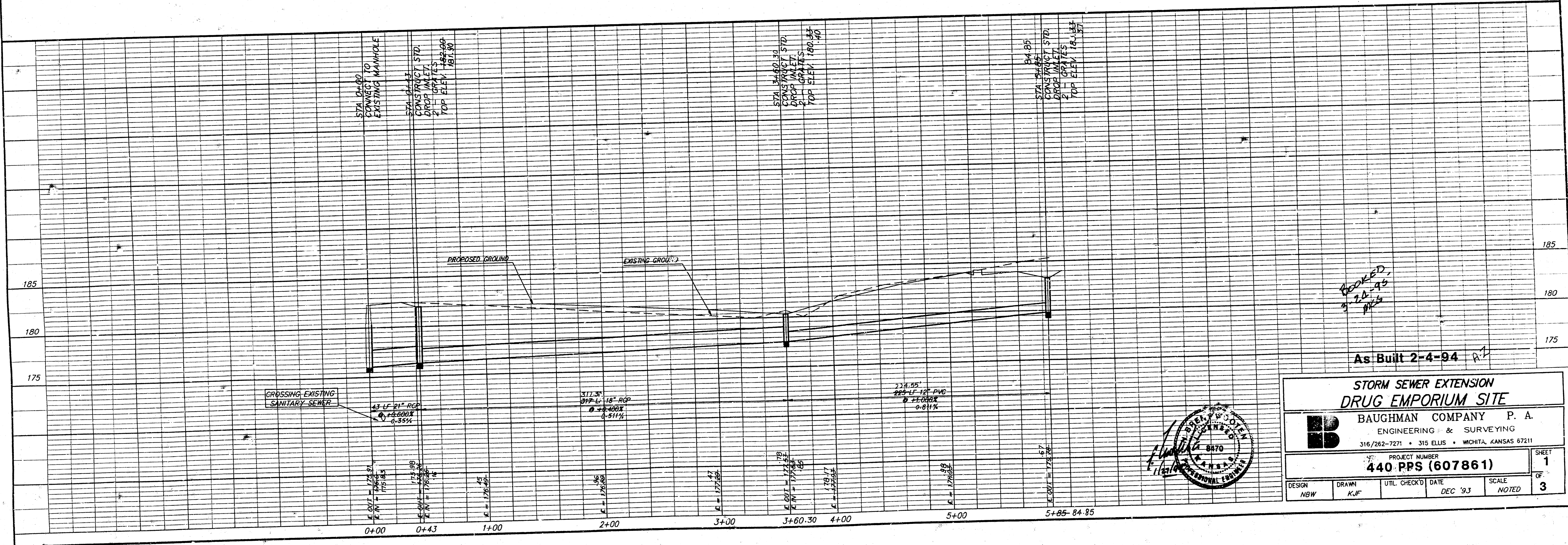
APPROVED AS NOTED
 BY CITY ENGINEER OF WICHITA

Sanitary Sewers _____
 Storm Sewers 1/RH 1/27/94
 Driveway Approaches _____
 Water Mains _____
 Paving _____

NOTE TO CONTRACTORS
 Inspection and testing for this project is to be provided by a Licensed Consulting Engineering Firm under contract with the Owner/Developer. Said inspection to be in accordance with the City of Wichita standard construction engineering practices and certified by a Licensed Professional Engineer. No work shall be performed in dedicated easements or public right-of-way by the Contractor without such inspection nor shall any work be commenced without written authorization by the City Engineer.



SITE LOCATION



BOOKED
 3-28-95
 PPS

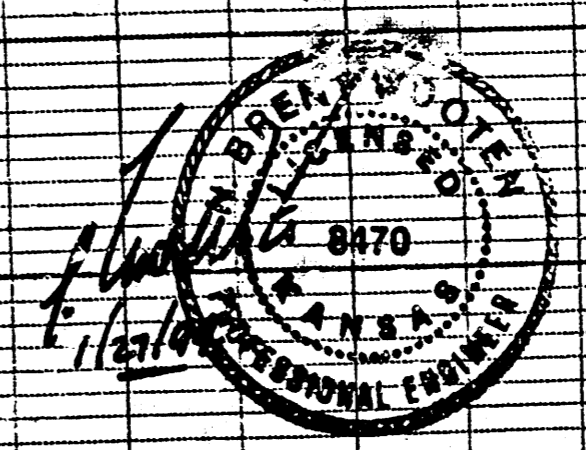
As Built 2-4-94 R1

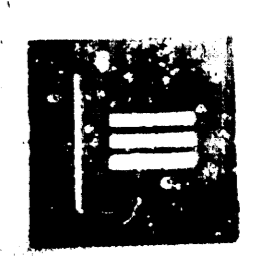
**STORM SEWER EXTENSION
 DRUG EMPORIUM SITE**

BAUGHMAN COMPANY P. A.
 ENGINEERING & SURVEYING
 316/262-7271 • 315 ELLIS • WICHITA, KANSAS 67211

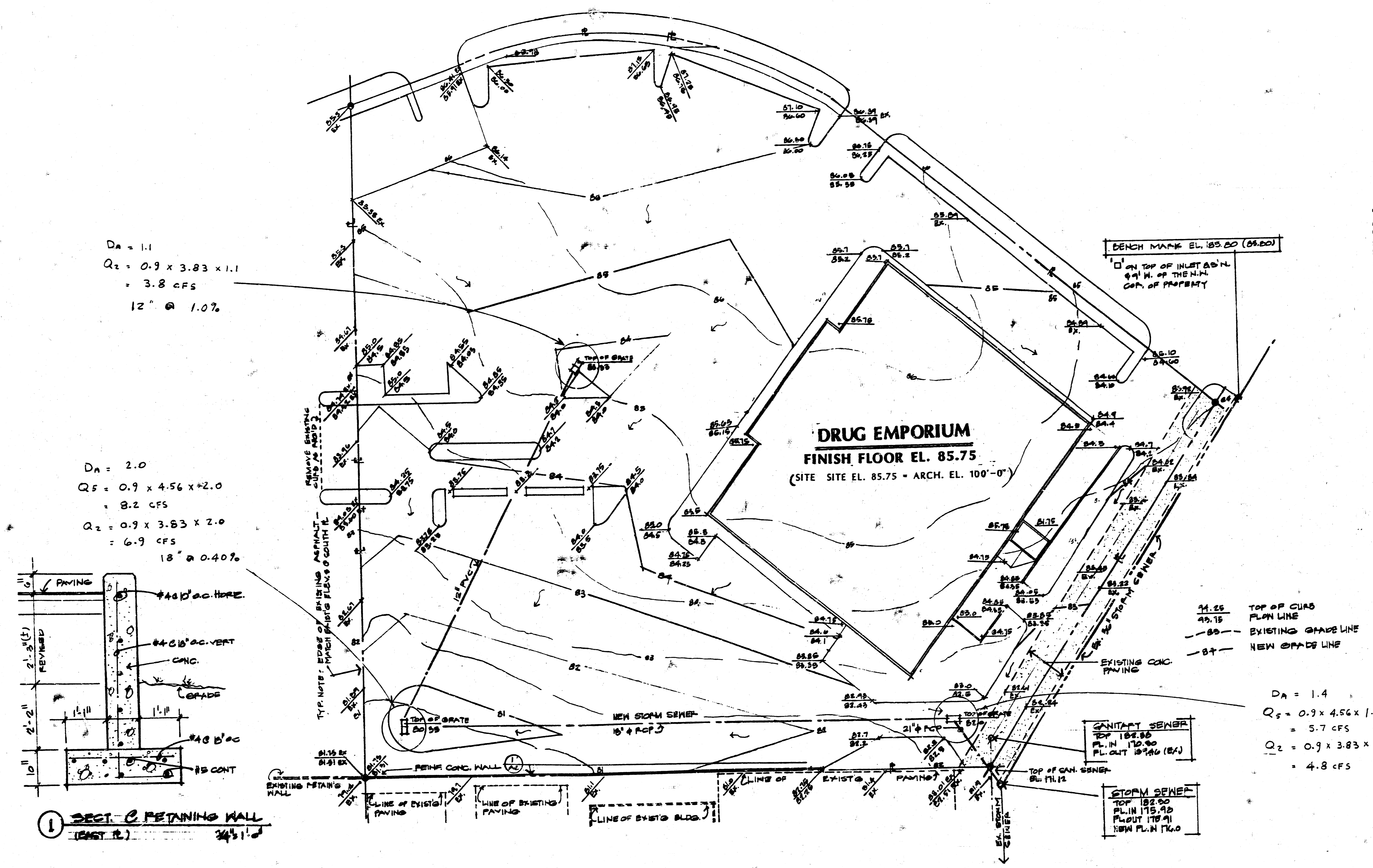
PROJECT NUMBER
440 PPS (607861)

DESIGN NBW	DRAWN KJF	UTIL. CHECK'D DATE	DEC '93	SCALE NOTED	SHEET 1 OF 3
---------------	--------------	-----------------------	---------	----------------	-----------------



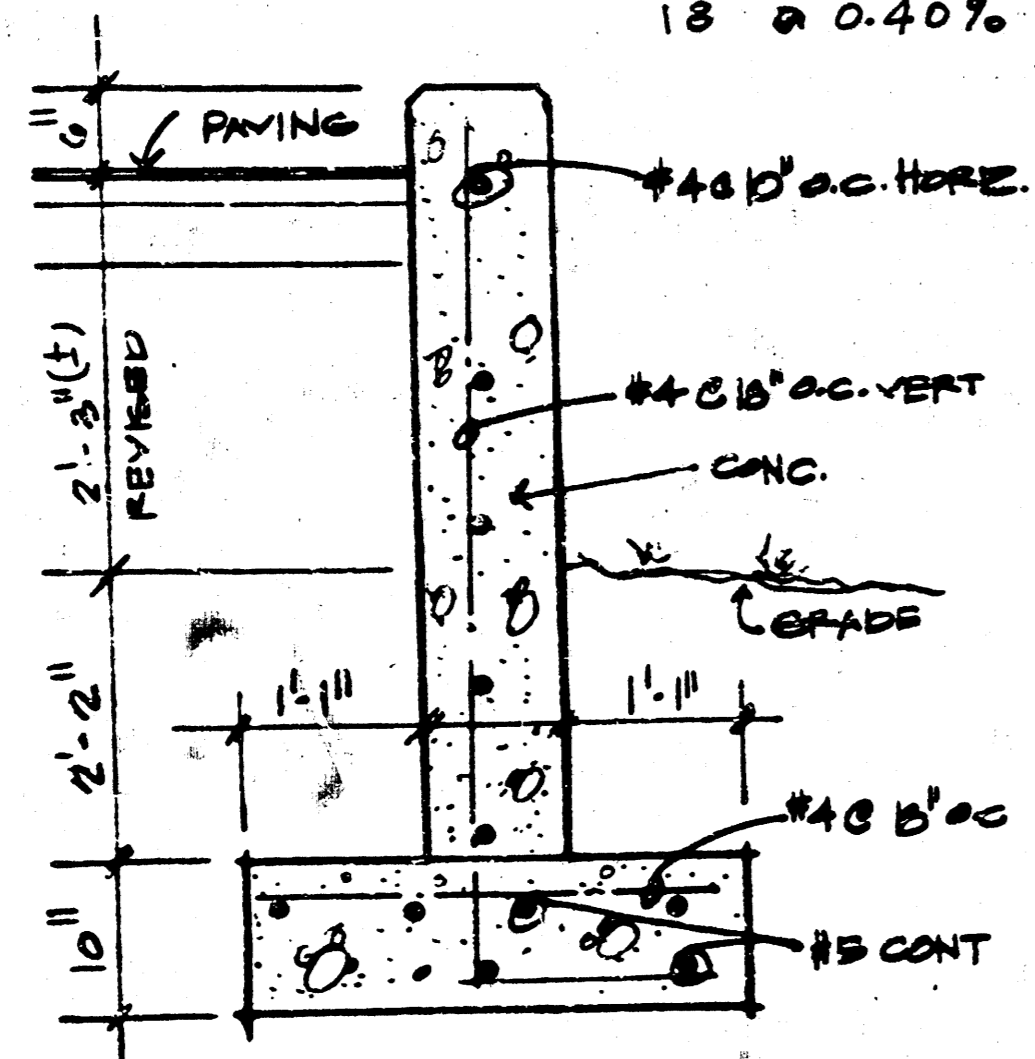


ARCHITECT: R. W. NELSON, INC., 200 N. BUCKLAWY • WICHITA, KANSAS 67202 • 316 267 001 • FAX 316 267 018



$D_1 = 1.1$
 $Q_1 = 0.9 \times 3.83 \times 1.1$
 = 3.8 cfs
 12' @ 1.0%

$D_1 = 2.0$
 $Q_1 = 0.9 \times 4.56 \times 2.0$
 = 8.2 cfs
 $Q_2 = 0.9 \times 3.83 \times 2.0$
 = 6.9 cfs
 18' @ 0.40%



SECTION C RETAINING WALL
 (CONT. R. 2)

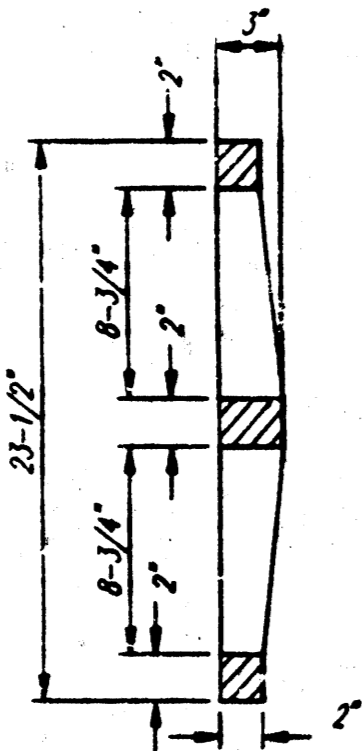
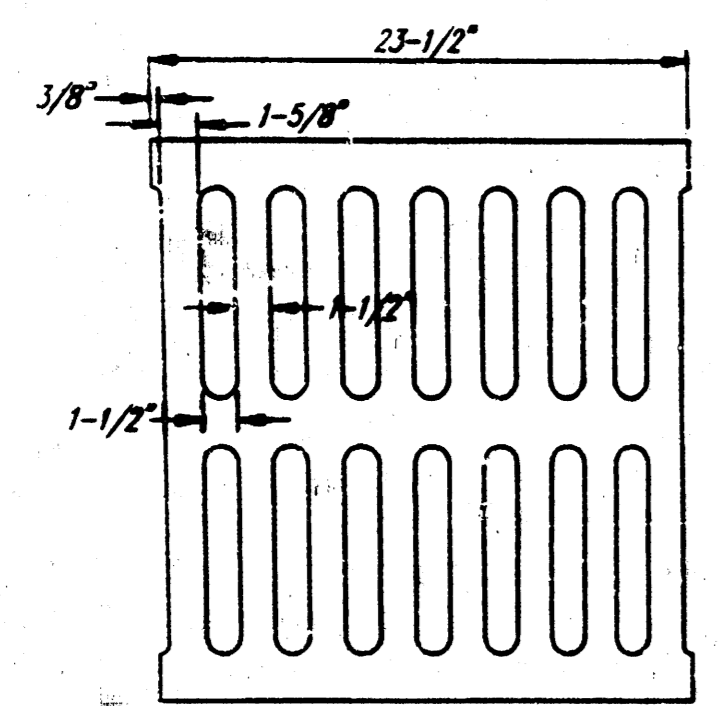
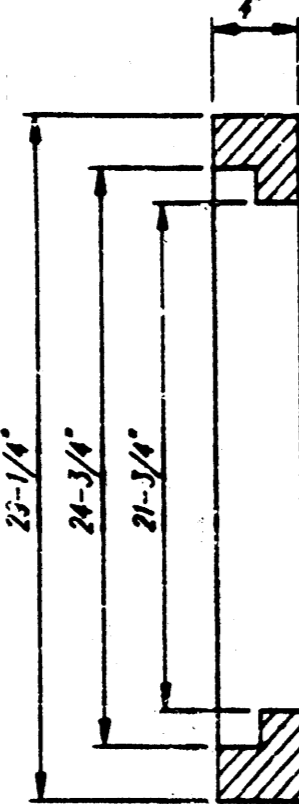
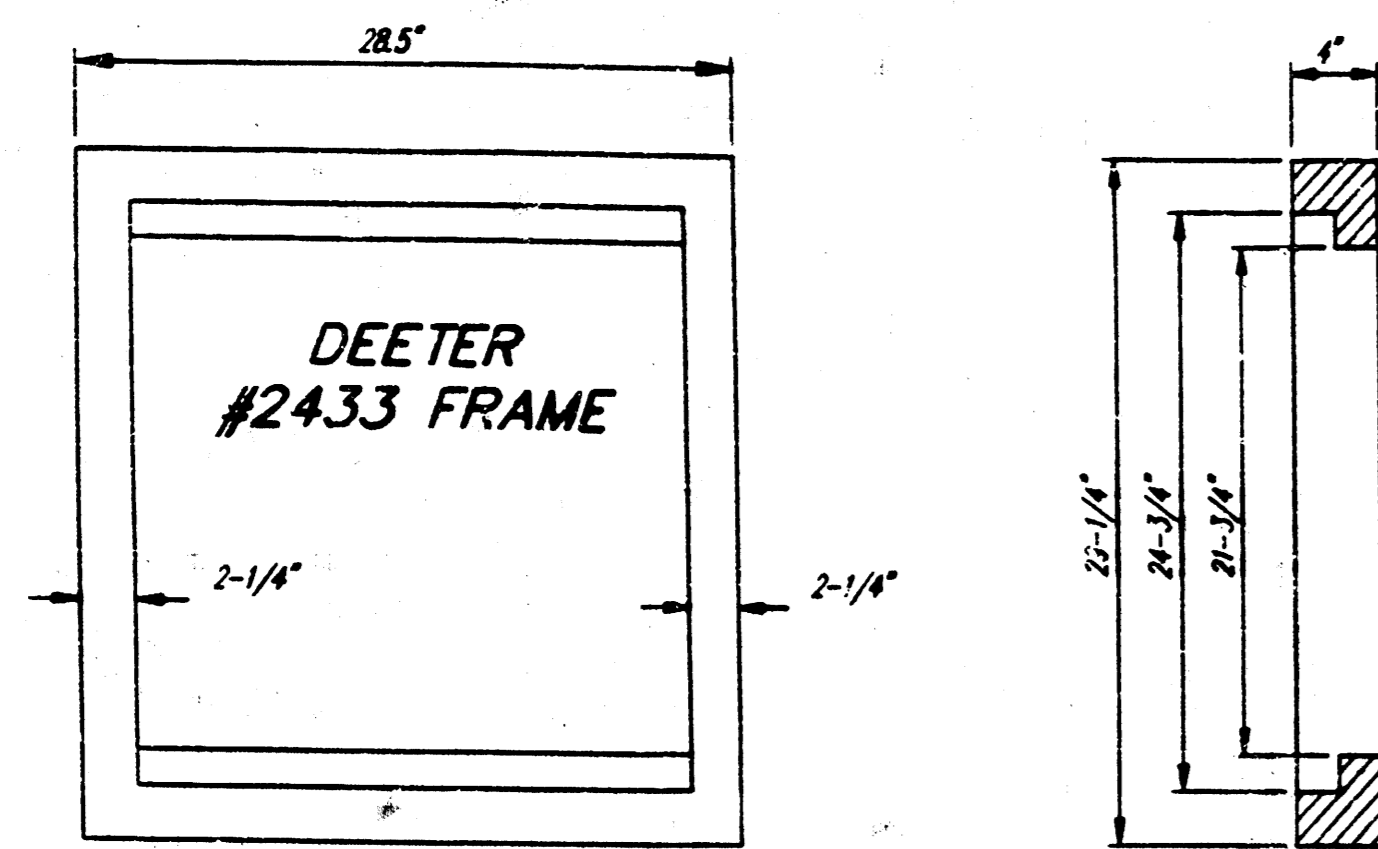
$D_1 = 1.4$
 $Q_1 = 0.9 \times 4.56 \times 1.4$
 = 5.7 cfs
 $Q_2 = 0.9 \times 3.83 \times 1.4$
 = 4.8 cfs

SITE GRADING PLAN

1" = 30'-0"

A2

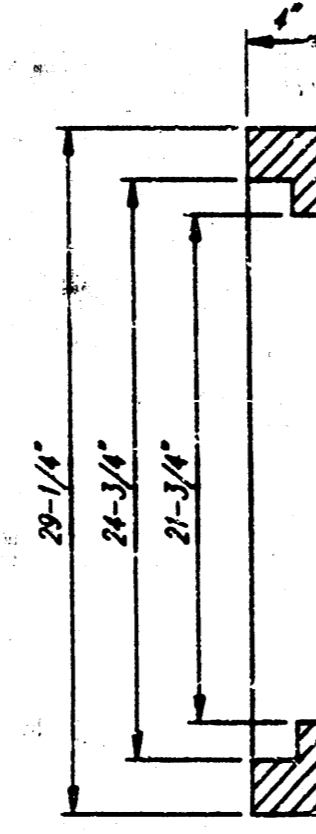
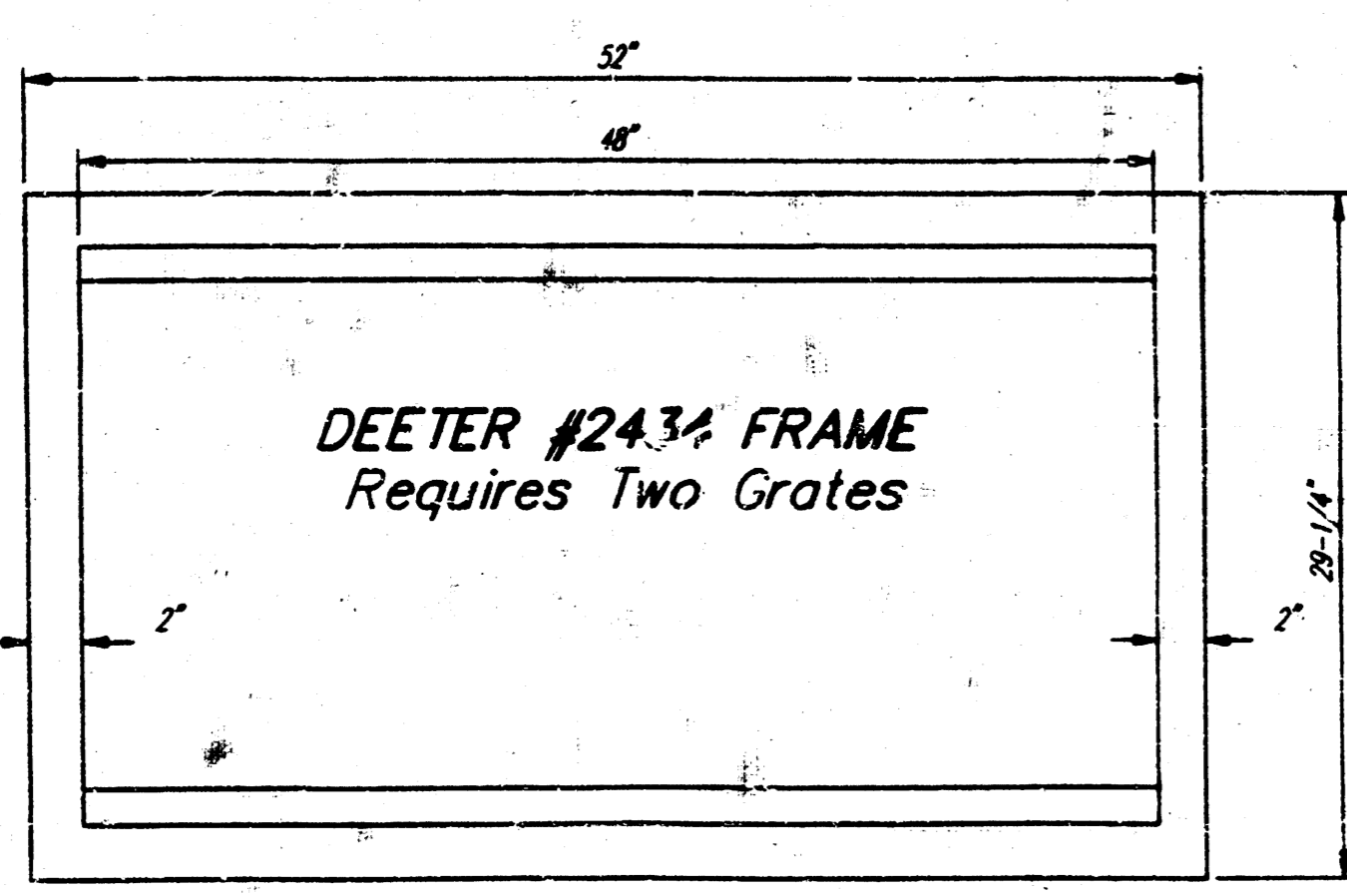
PROGRESS PRINT
 DATE: 11-17-93
 REVISED: 12-14-93 (S)
 REVISION: 12-17-93 (S)



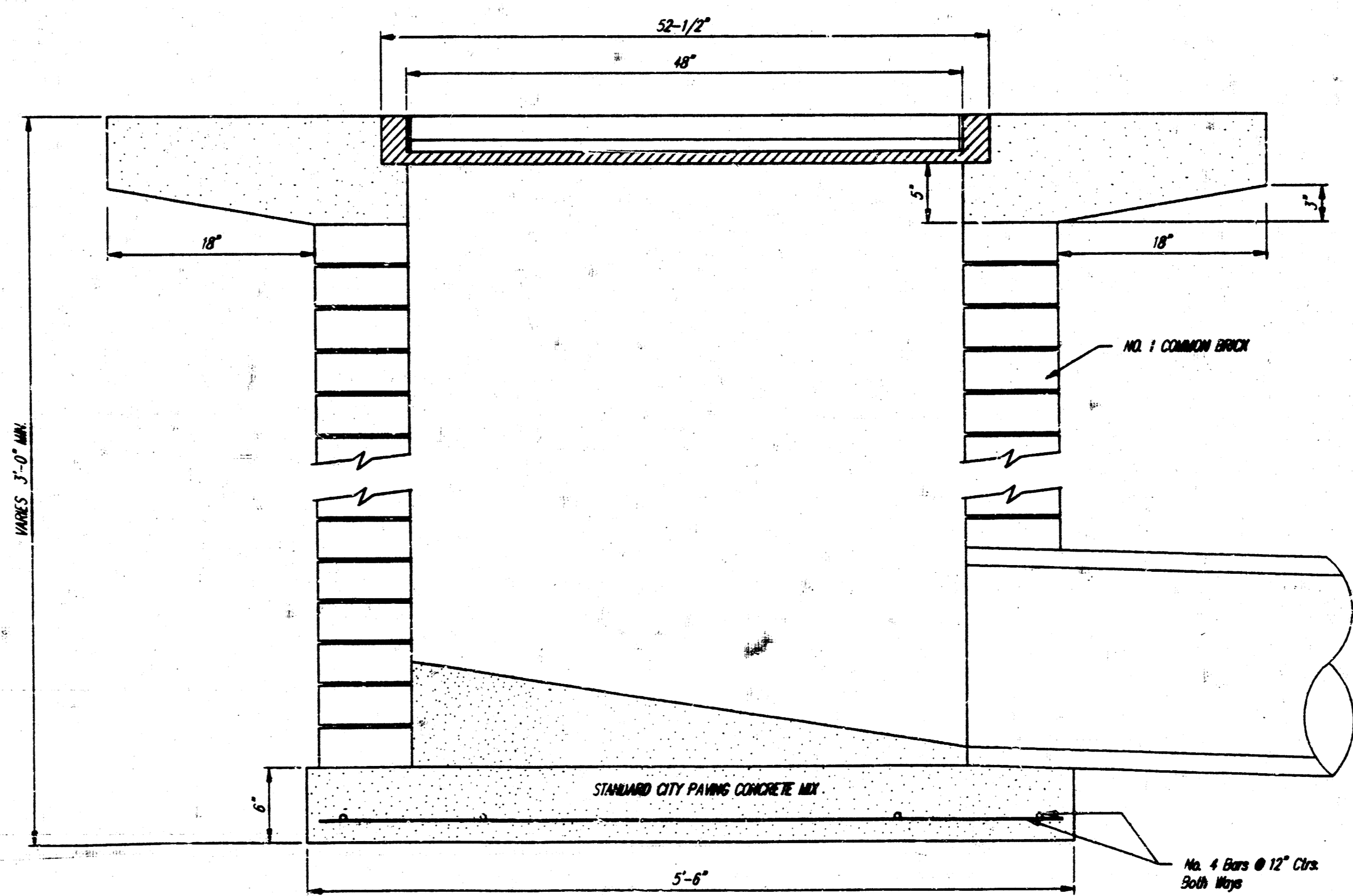
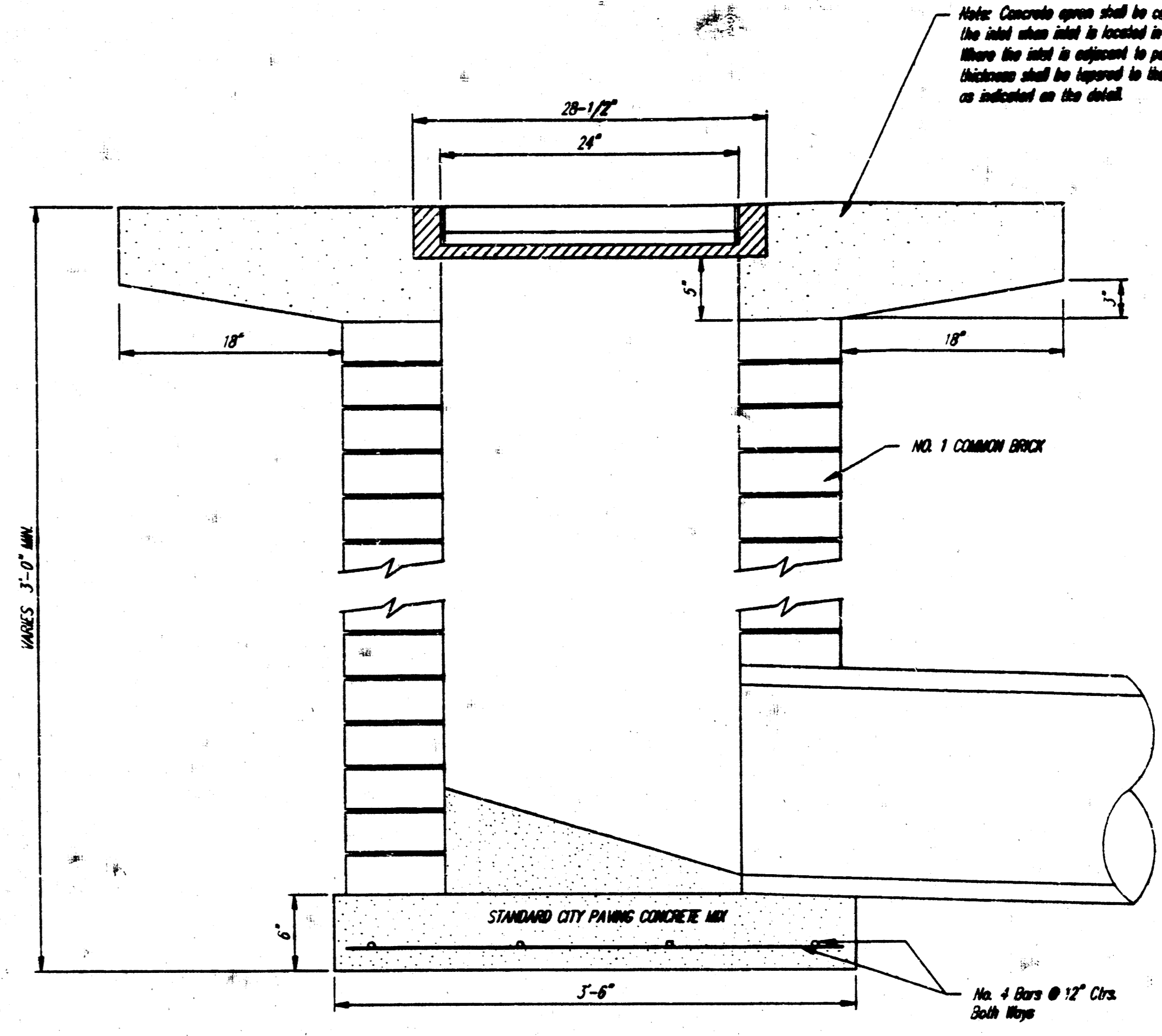
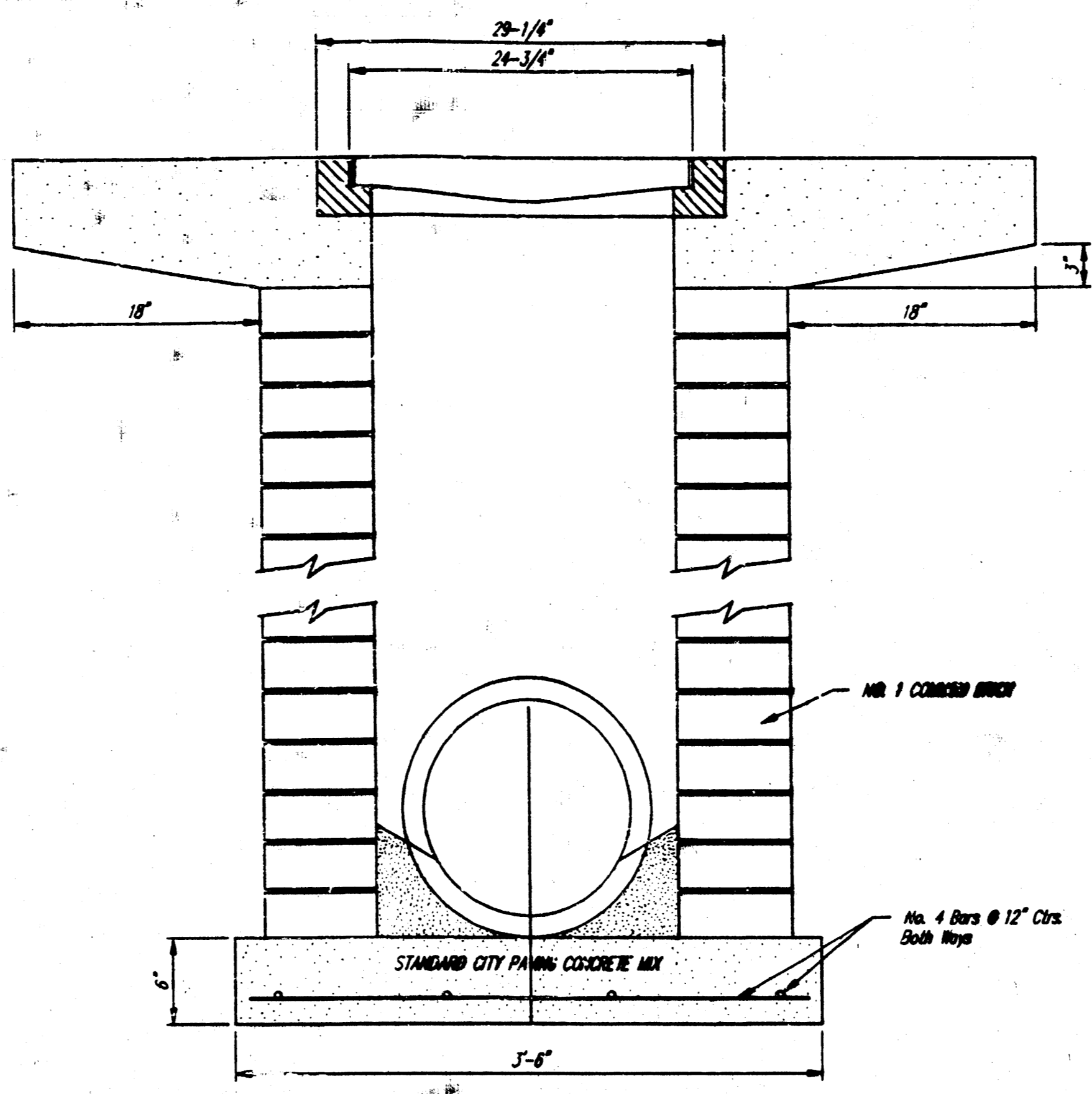
DEETER #2433 GRATE

24" x 24" Frame and Grate Detail

NOTE: Grates shall be imprinted on the top surface with "CITY OF WICHITA" using letters of least 1" in height. Other marking methods may be approved by the engineer.



Double 24" x 24" Frame Detail



DROP INLET DETAILS	
M.E. Lindebak, City Engineer City of Wichita, Kansas	
Project Number	3
440 PPS (607861)	3