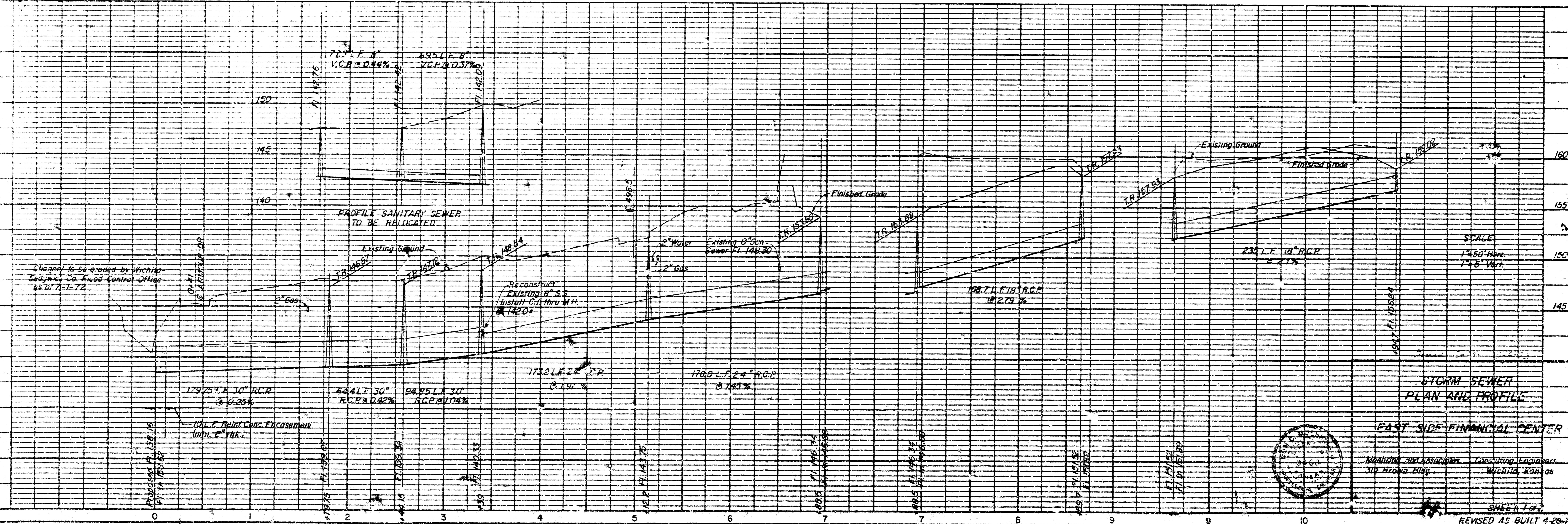


**NOTE TO CONTRACTOR**  
 This project is to be constructed under the supervision of the CITY ENGINEERS and INSPECTORS. All work shall conform to the specifications of the City of Wichita, Kansas.

**APPROVED:** Approval does not relieve the contractor from any responsibility for errors or omissions from the contract documents or for any additional work, equipment, work, or materials.  
 Date: \_\_\_\_\_  
 Engineering Div. \_\_\_\_\_

Bench Mark: "O" in Open, Fire Hydrant at East side Longfellow Lane & South side Kellogg Street. Elev. 162.71



SCALE  
 1" = 50' Horiz.  
 1" = 5' Vert.

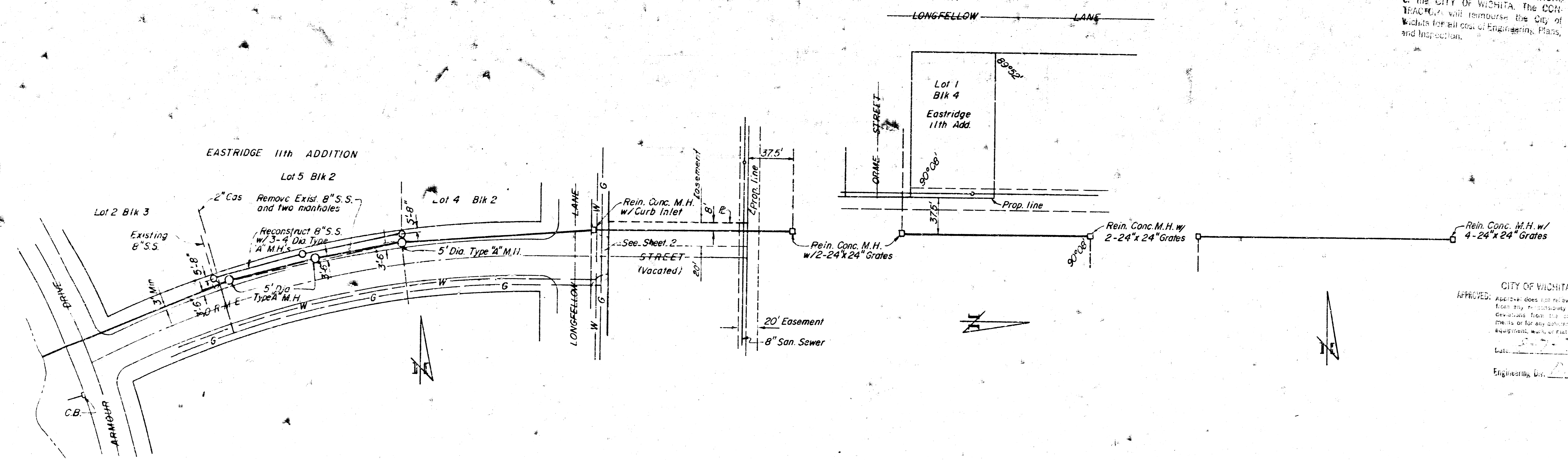
**STORM SEWER PLAN AND PROFILE**

**EAST SIDE FINANCIAL CENTER**

Wichita, Kansas  
 Consulting Engineers  
 318 Grand Bldg.  
 Wichita, Kansas

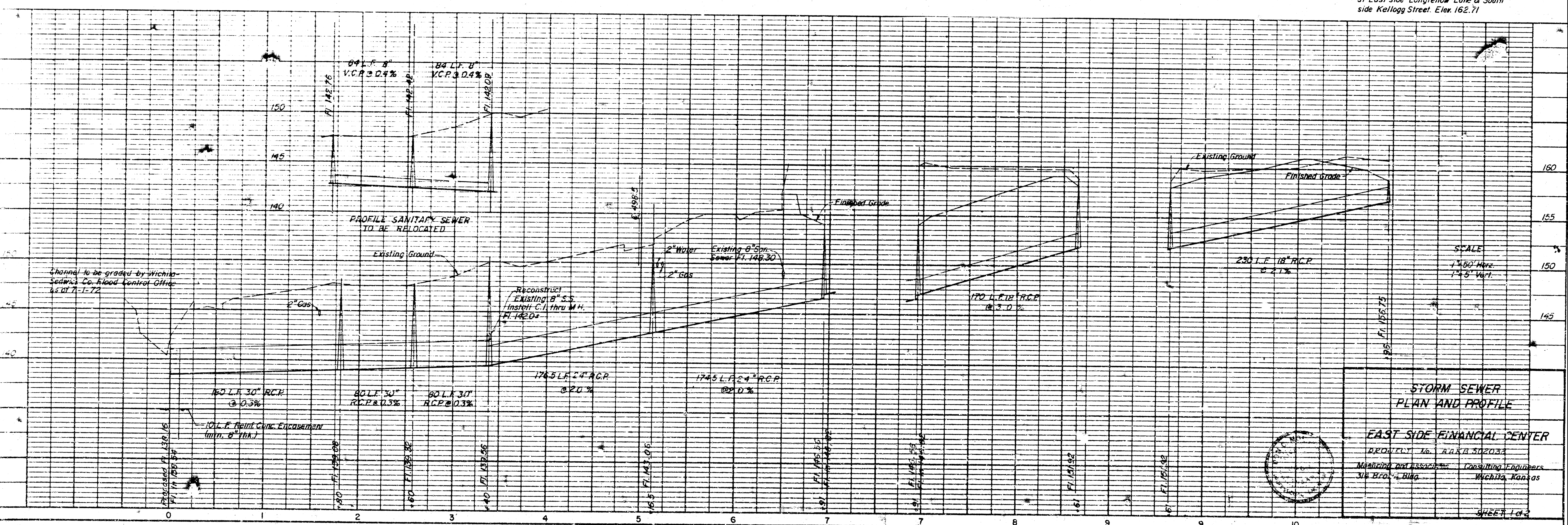


NOTE TO CONTRACTOR:  
 This project will be constructed under the supervision of the CITY ENGINEER and conforming to the SPECIFICATIONS of the CITY OF WICHITA. The CONTRACTOR will reimburse the City of Wichita for all cost of Engineering, Plans, and Inspection.



CITY OF WICHITA  
 APPROVED: \_\_\_\_\_  
 Engineering Div.

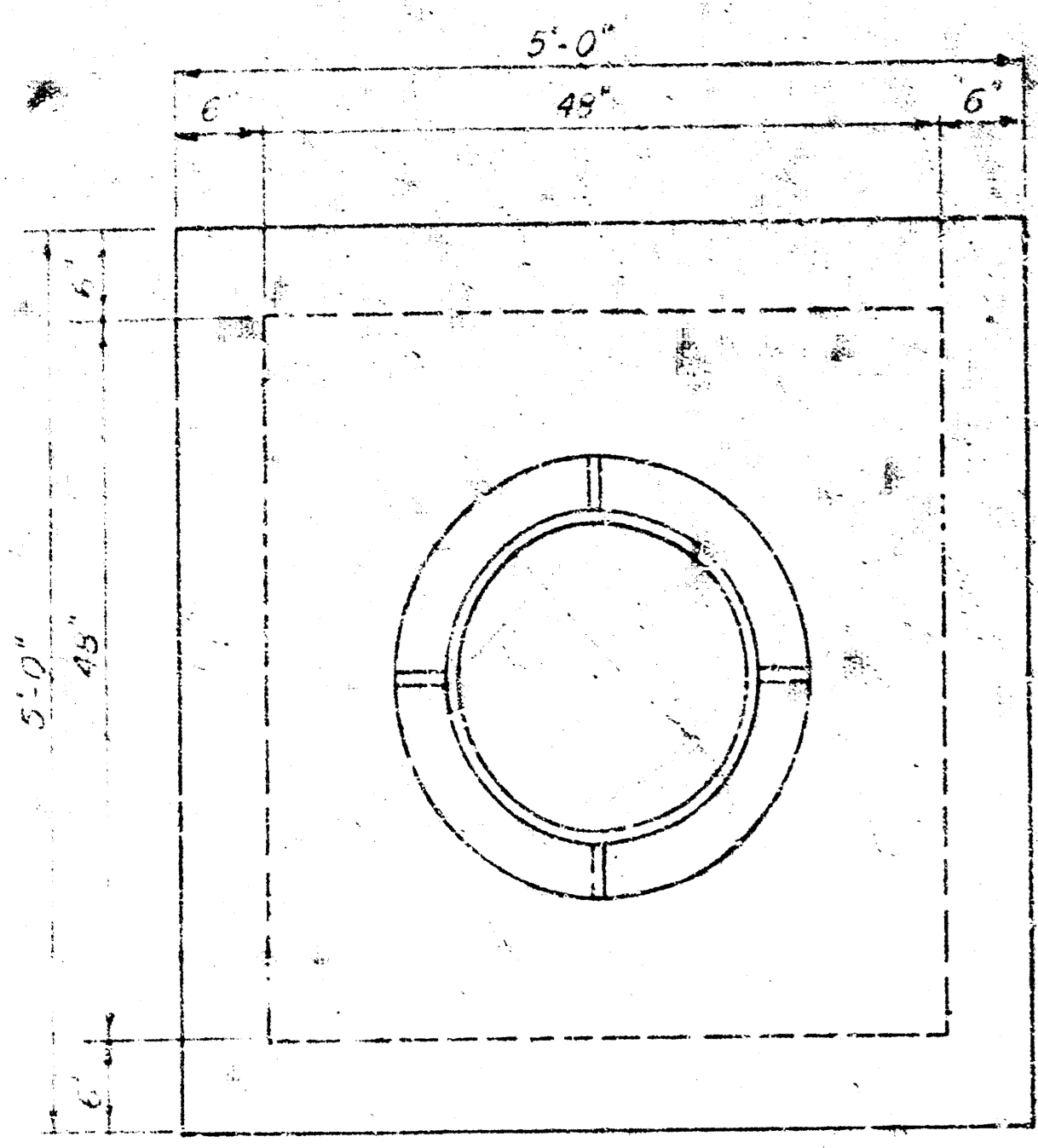
Bench Mark: "0" in Open, Fire Hydrant at East side Longfellow Lane & South side Kellogg Street. Elev. 162.71



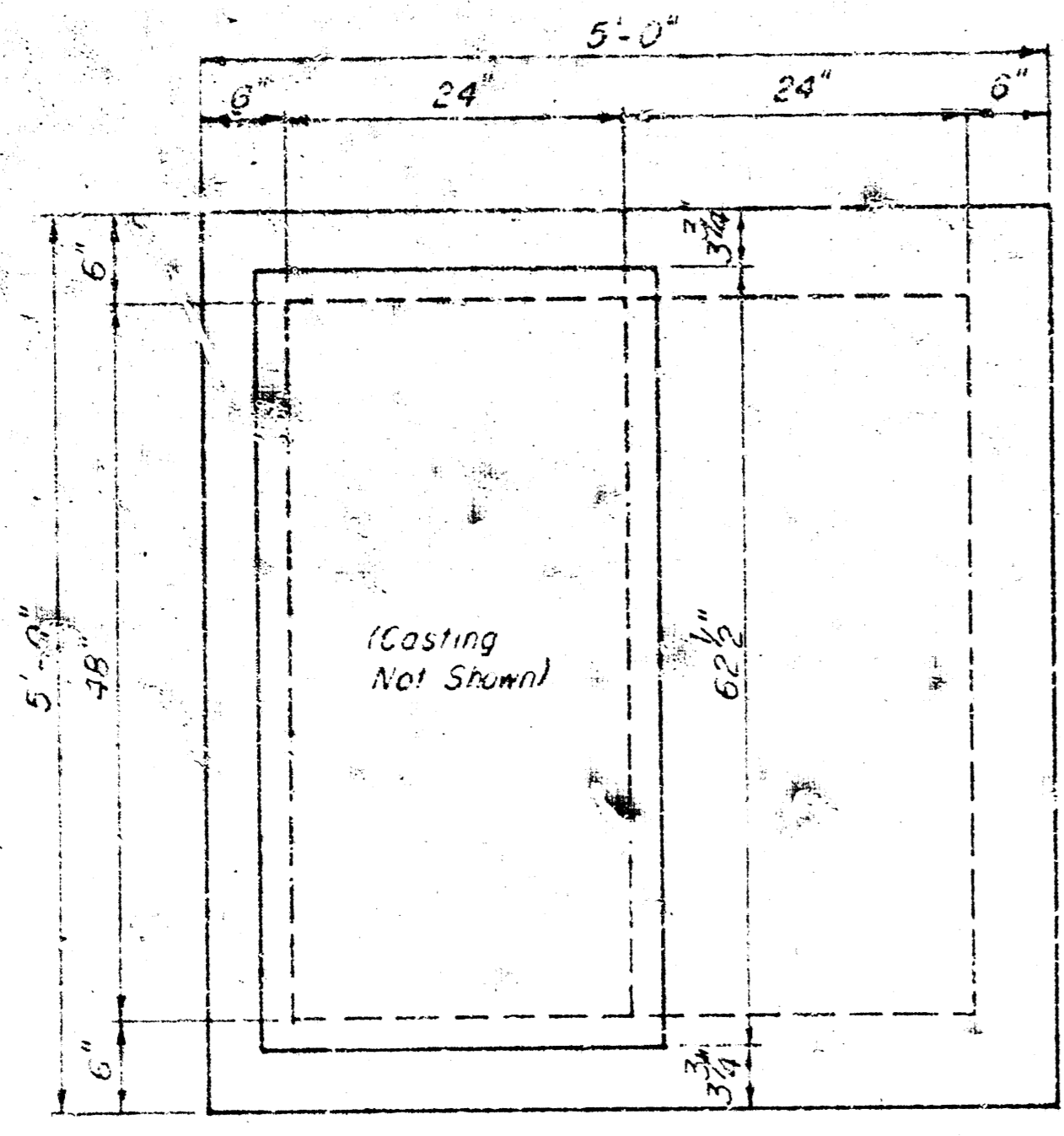
**STORM SEWER PLAN AND PROFILE**

**EAST SIDE FINANCIAL CENTER**  
 PROJECT No. AAR 502032  
 Manning and Associates Consulting Engineers  
 318 Brookside Building  
 Wichita, Kansas

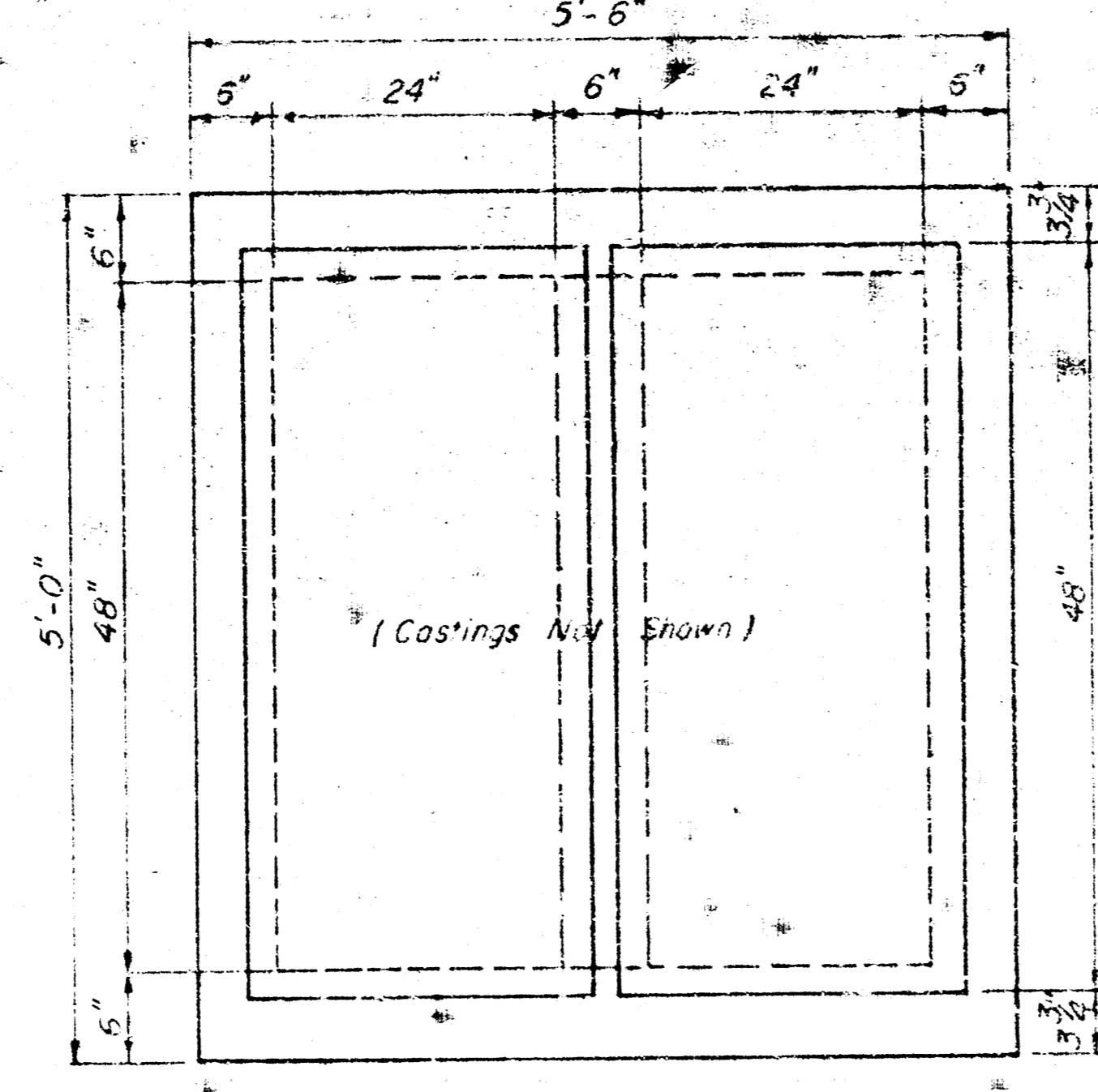




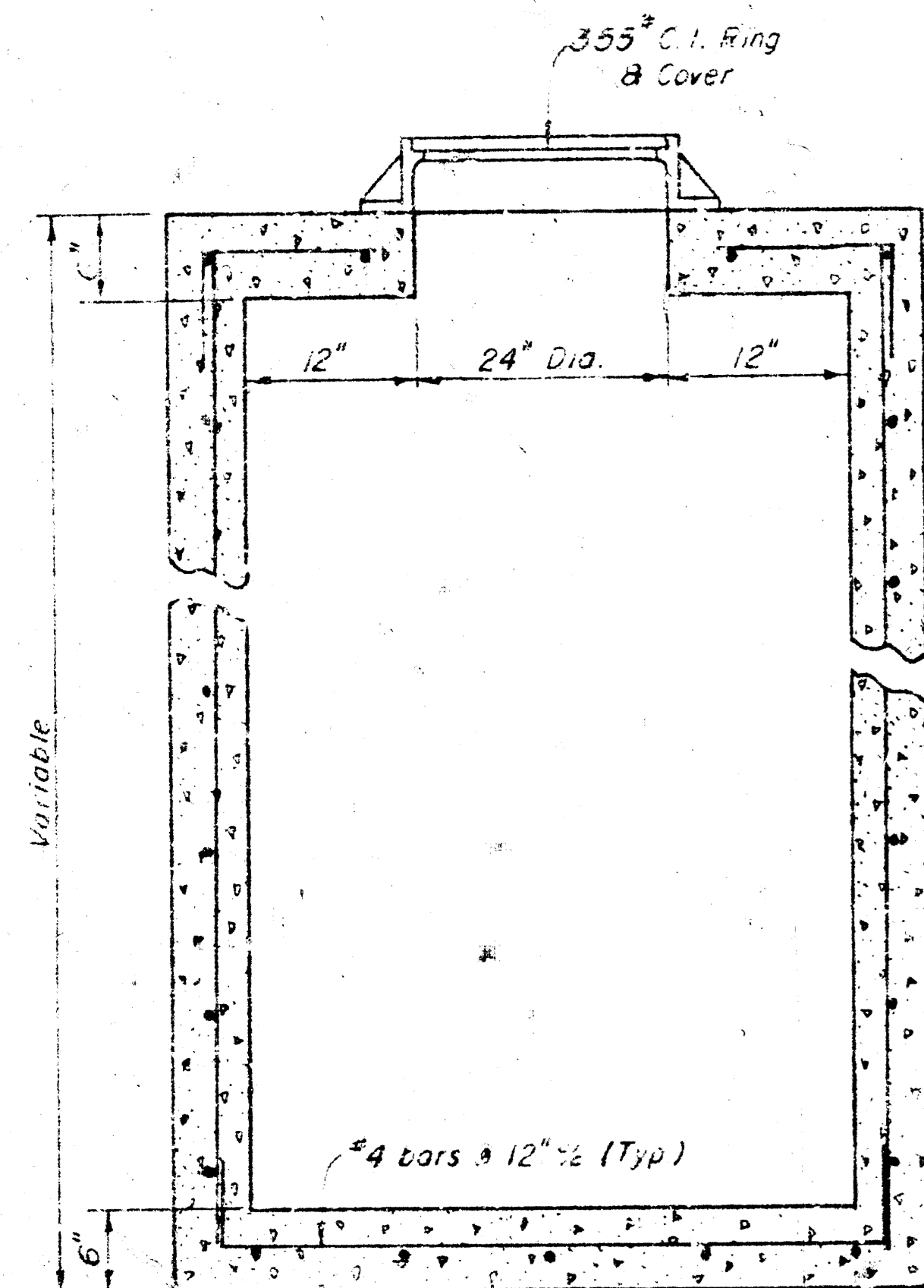
PLAIN



PLAN

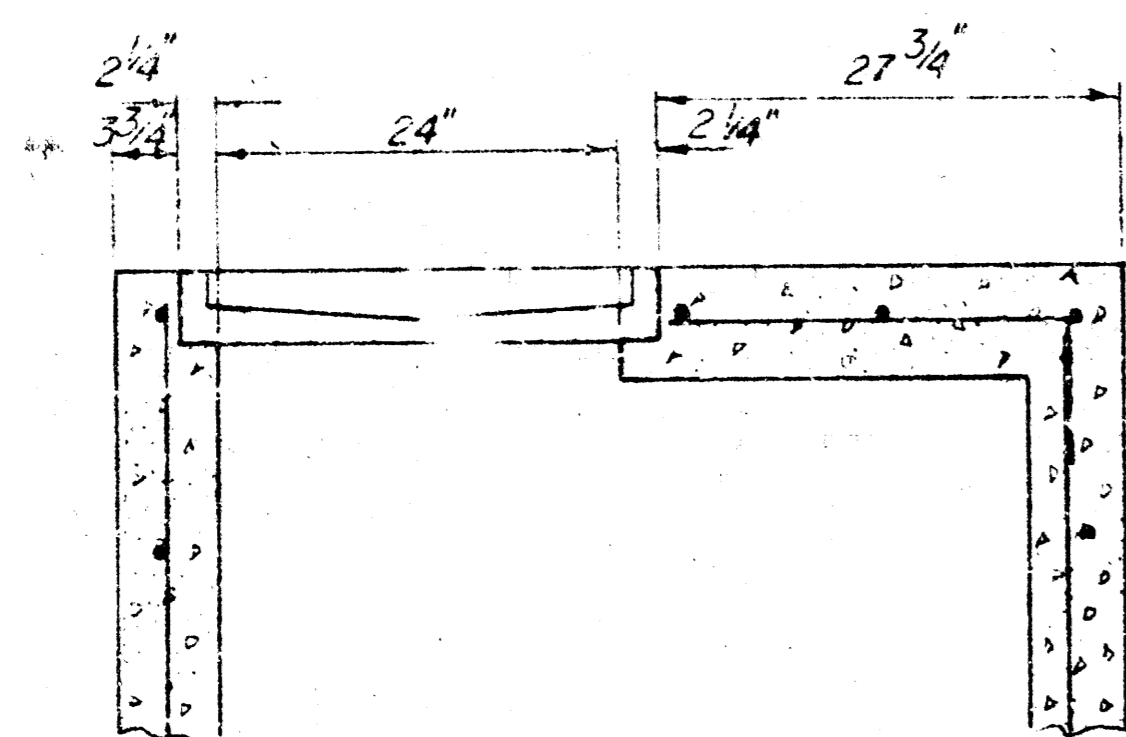


PLAN



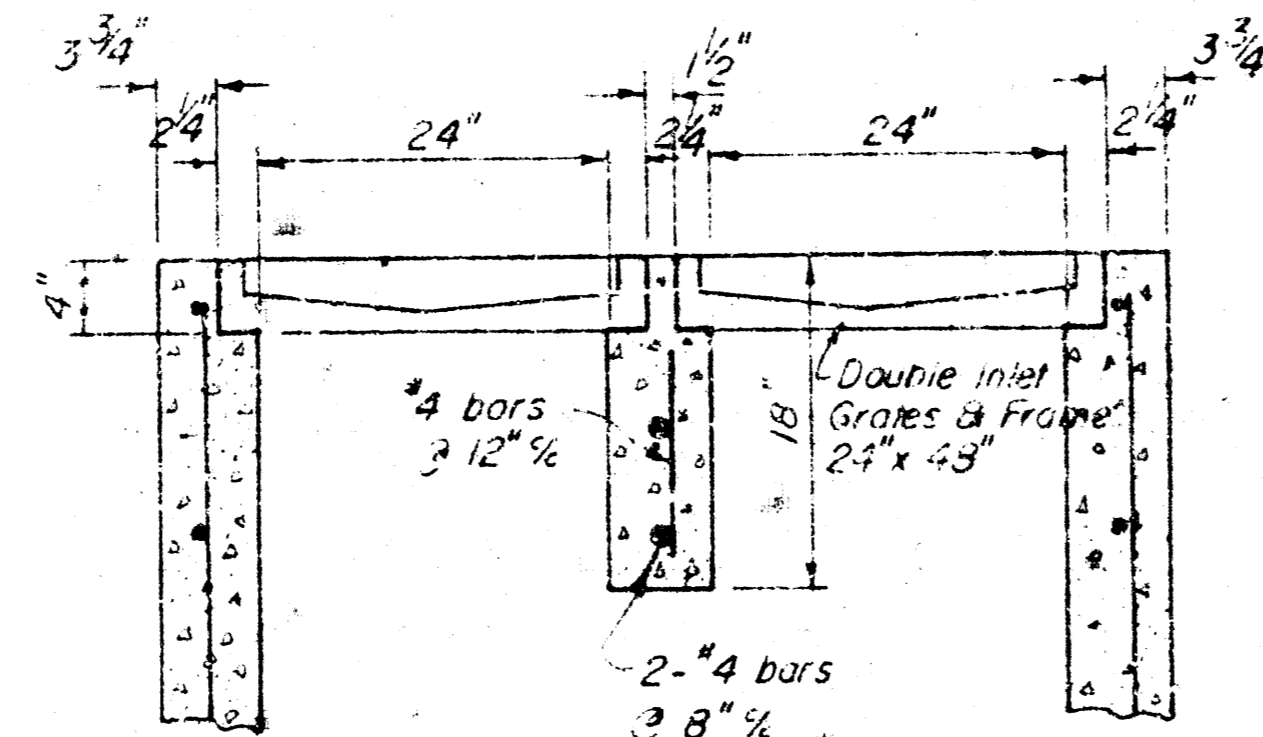
SECTION

REINFORCED CONCRETE MANHOLE



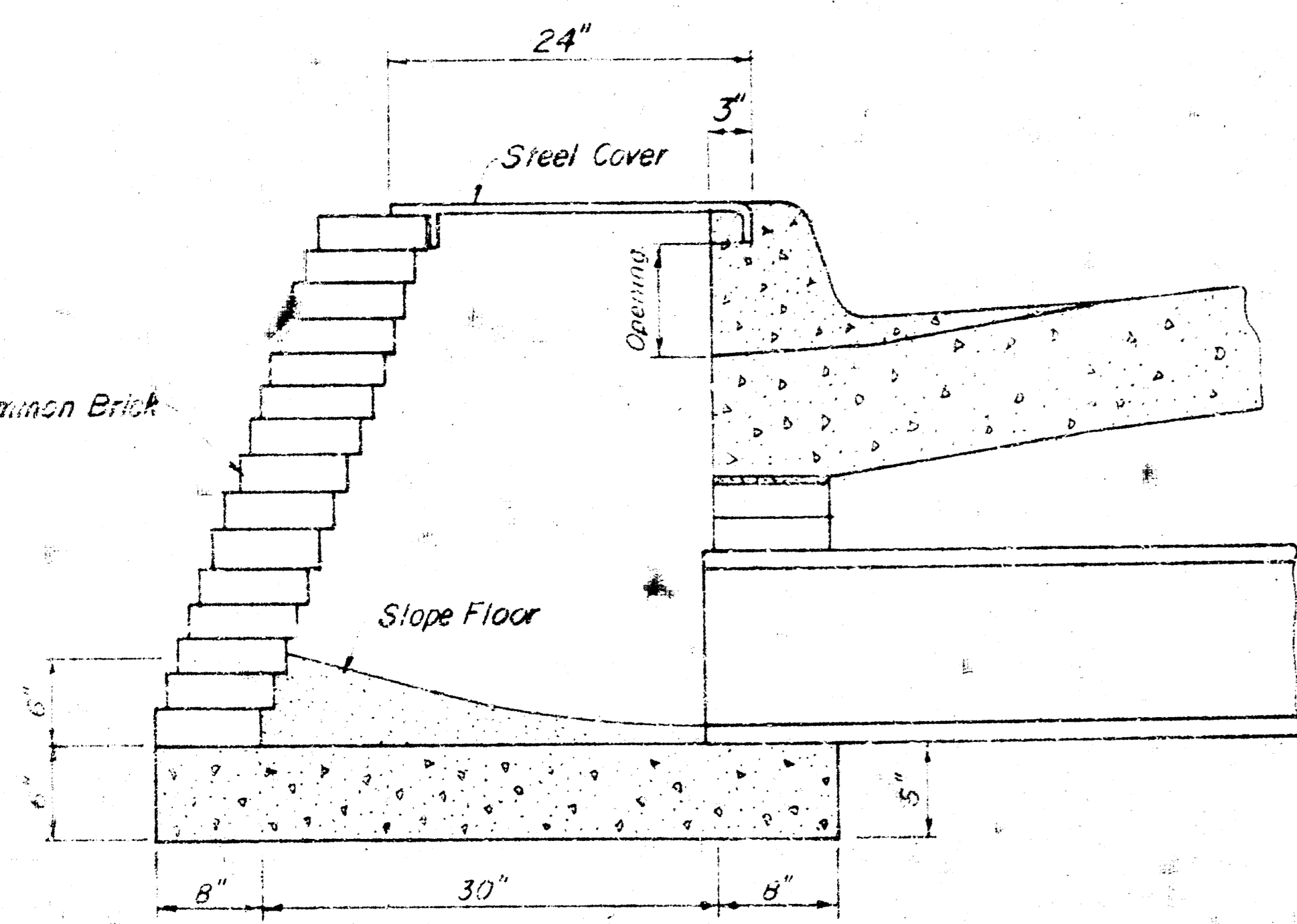
SECTION

2-GRATE DROP INLET MANHOLE

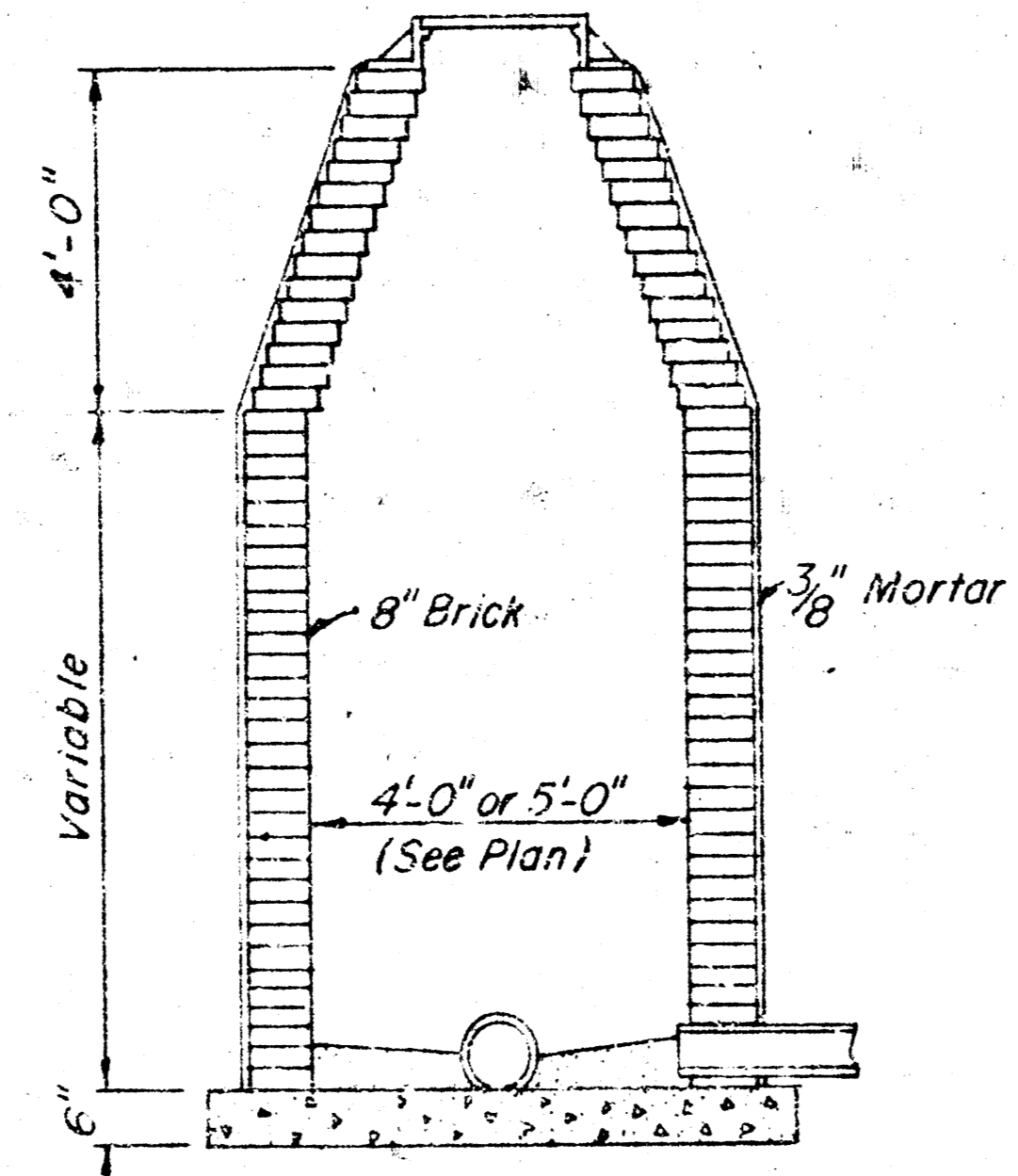


SECTION

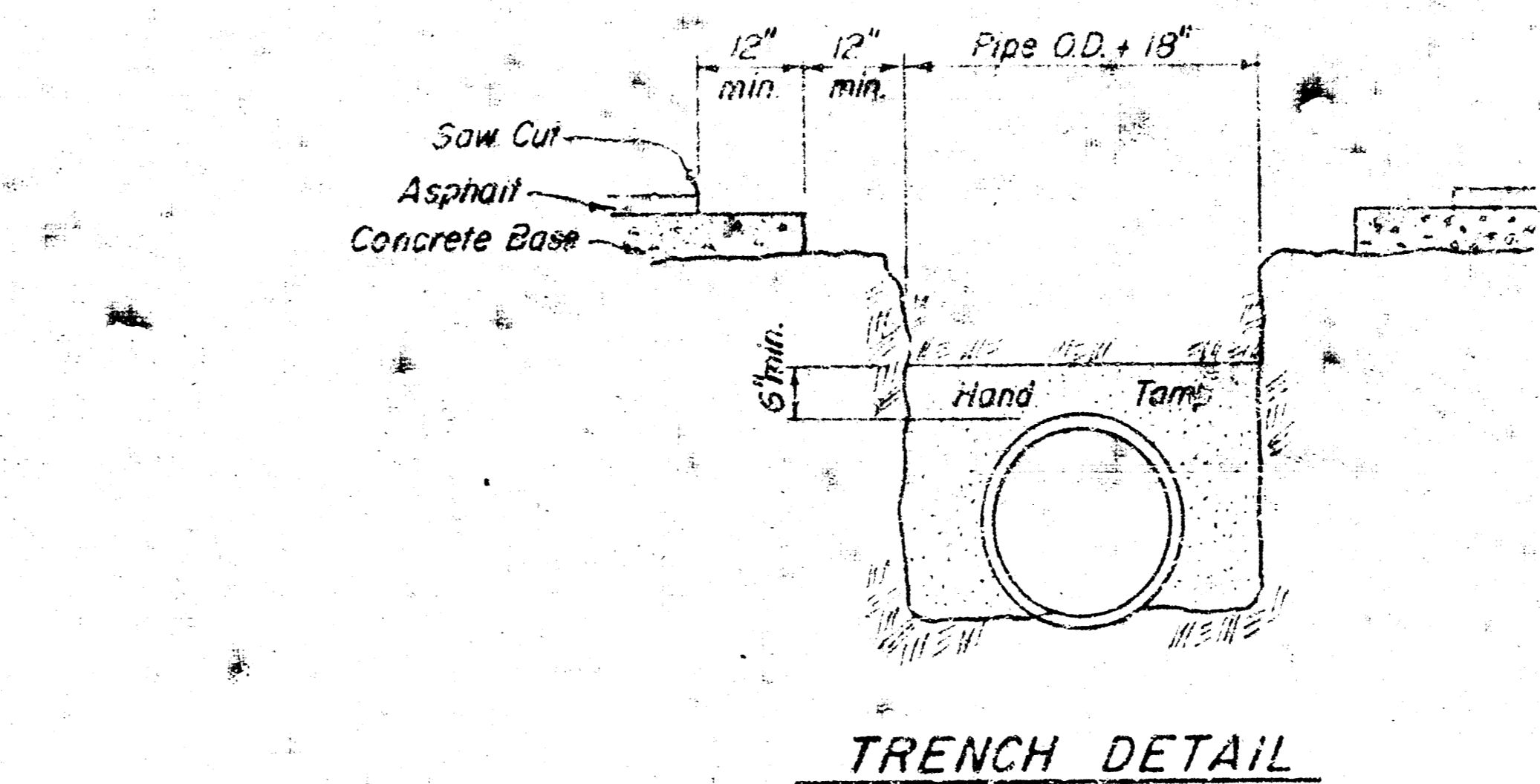
4-GRATE DROP INLET MANHOLE



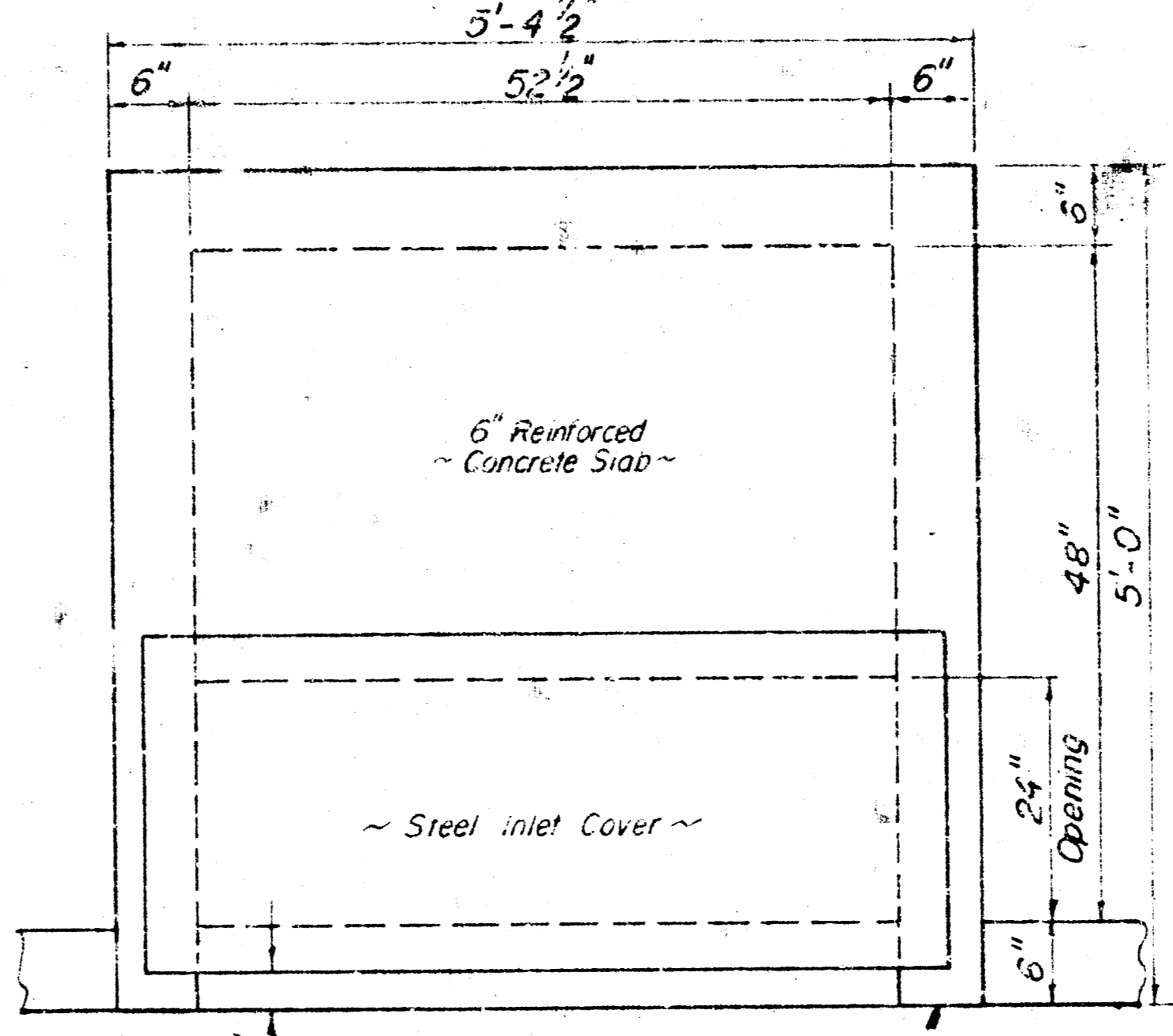
CURB INLET CATCH BASIN



STANDARD BRICK MANHOLE TYPE A

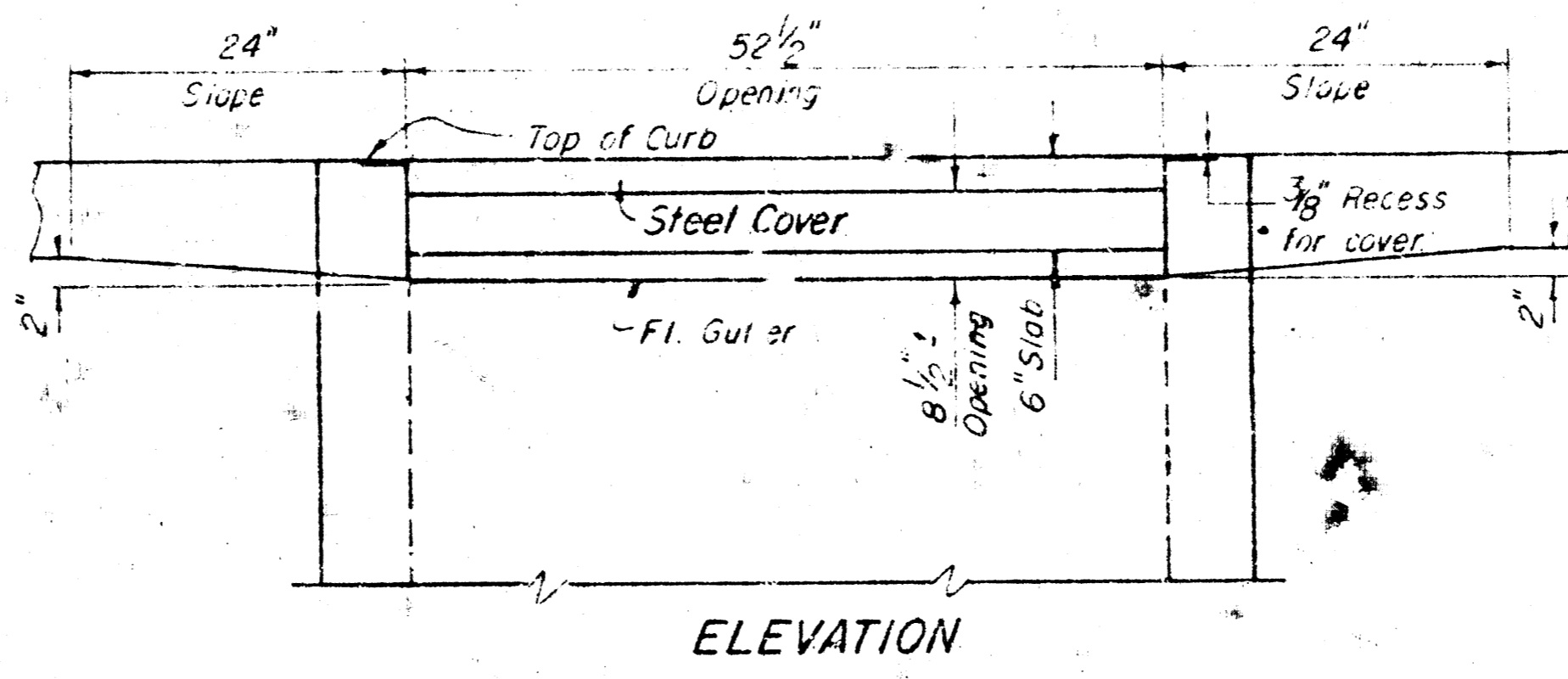


TRENCH DETAIL

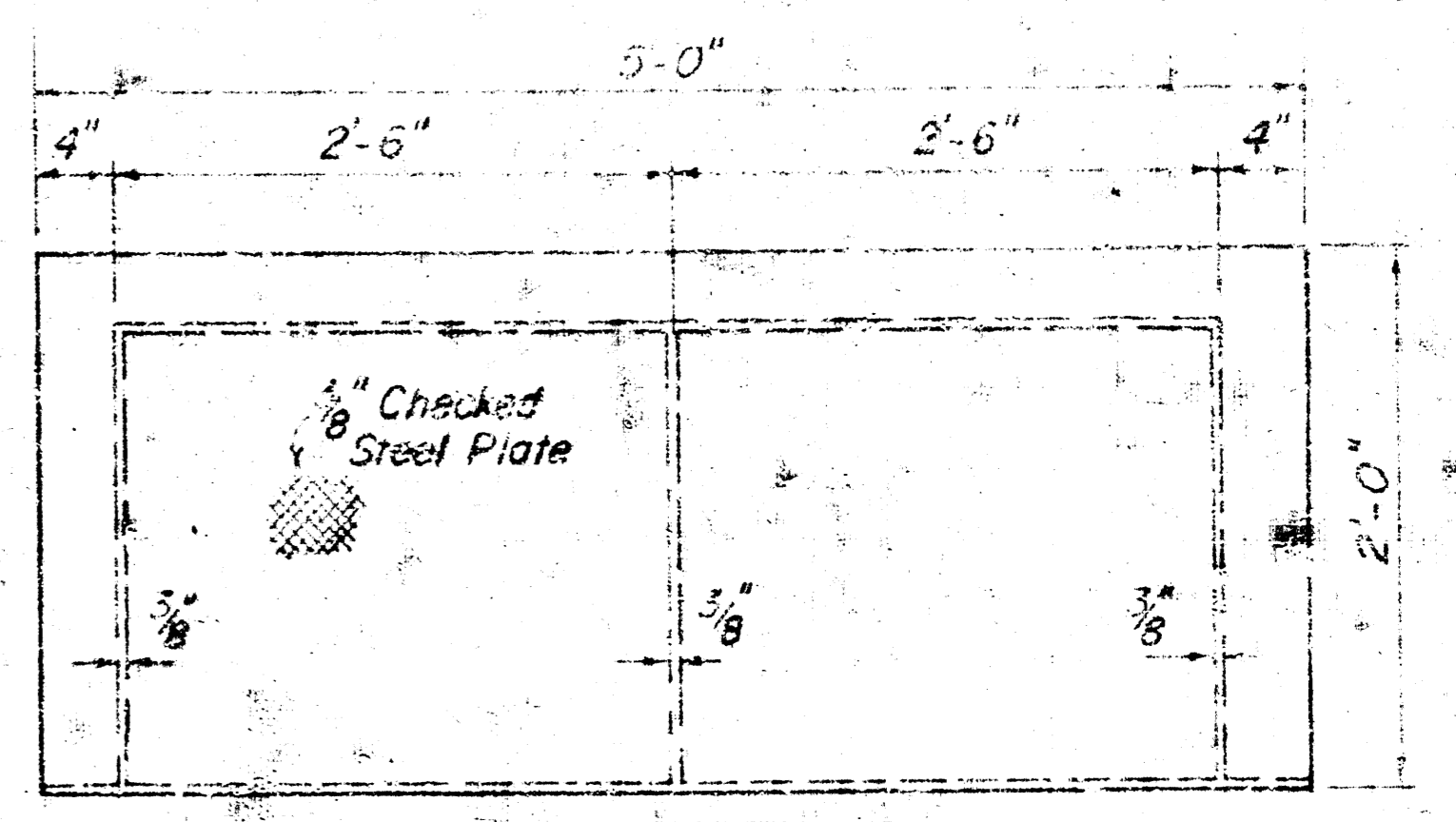


PLAN

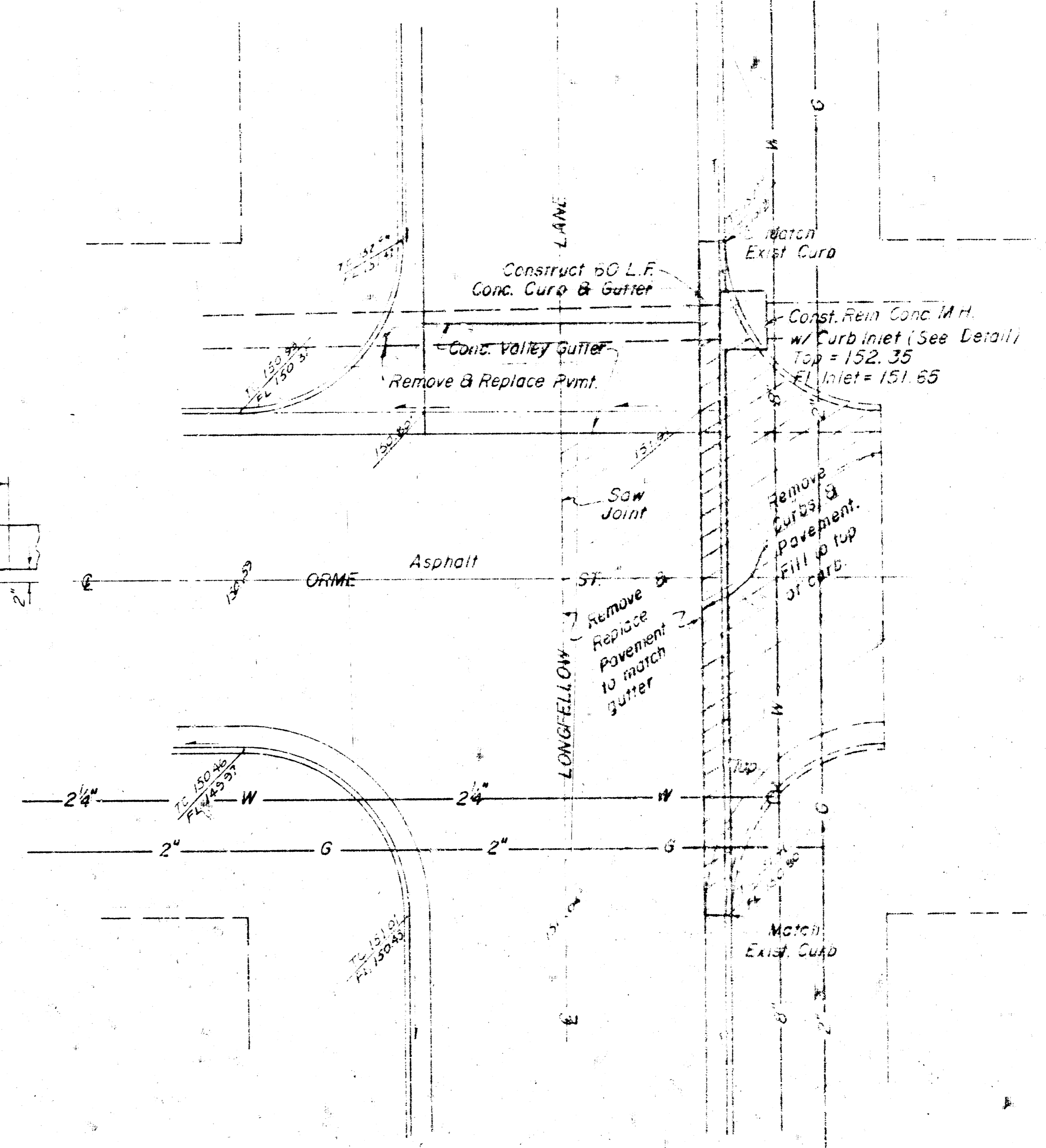
REINFORCED CONCRETE CURB INLET MANHOLE



ELEVATION



STEEL INLET COVER

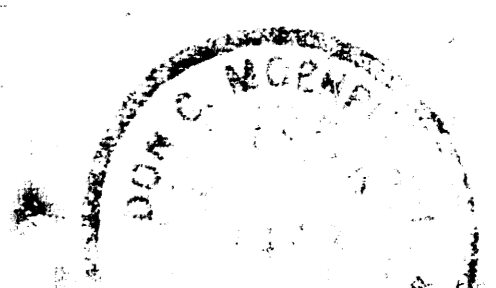


PLAN OF INTERSECTION ORME STREET & LONGFELLOW LANE

1" = 10'

NOTE: All castings City of Wichita standard. Concrete shall contain 6 sacks per cubic yard.

STORM SEWER PLAN AND PROFILE EAST SIDE FINANCIAL CENTER



Moehring and Associates Consulting Engineers