

SHEET NO.	TOTAL SHEETS
1	6

CITY OF WICHITA, KANSAS
 MICHAEL E. LINDEBAK, P.E., CITY ENGINEER

STORM WATER SEWER

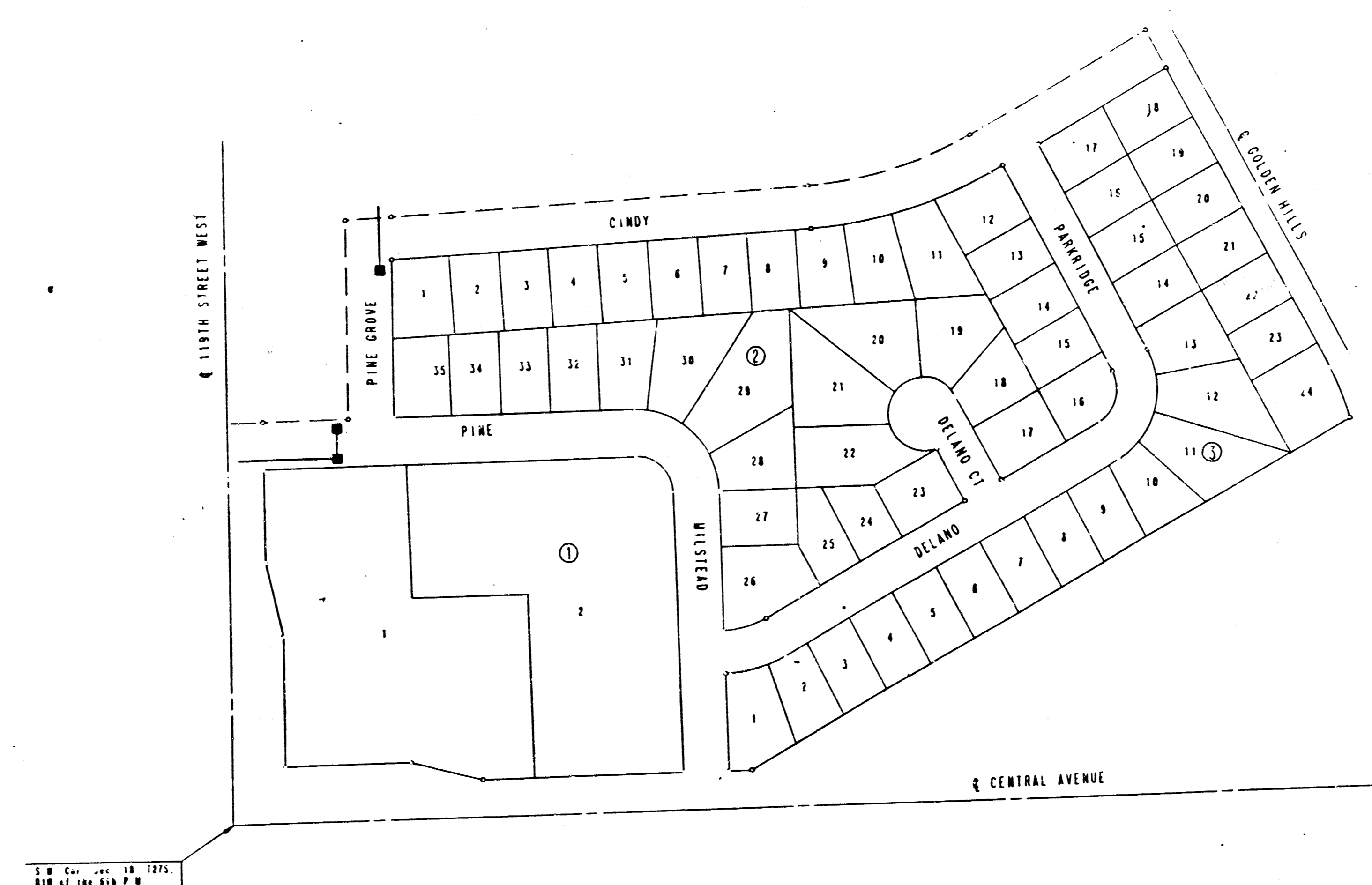
IN
 GOLDEN HILLS 4TH ADDITION
 CITY OF WICHITA PROJECT NO. 468-76-245-80001-000-000-157

INDEX OF SHEETS

1. TITLE SHEET
2. PLAN
3. STORM WATER SEWER PLAN/PROFILE
4. STANDARD TYPE 1A CURB INLET (L-11-4)
5. STANDARD TYPE 1A CURB INLET (L-11-4)
6. MANHOLE FRAME & COVER DETAIL

PROJECT SURVEY CONTROL

CITY OF WICHITA DATUM
 DATUM BENCH MARK: CITY OF WICHITA BENCH MARK DISC 40' EAST AND 44' SOUTH OF INTERSECTION OF Q'S CENTRAL AND 11TH STREET WEST. ELEV. = 156.93
 BENCH MARK: 8" SPIKE IN NW FACE 18' CEDAR ON SOUTH SIDE CENTRAL AT GOLDEN HILLS STREET. ELEV. = 160.27



GENERAL NOTES

1. UNDERGROUND UTILITY SERVICE LINES AND OVERHEAD UTILITY POLE LINES ARE TO BE ADJUSTED AS NECESSARY BY OTHERS PRIOR TO CONSTRUCTION UNLESS THE PLANS SPECIFICALLY CALL FOR THEIR ADJUSTMENT BY THE CONTRACTOR. EXISTING UTILITIES AND THEIR LOCATION, AS SHOWN ON THE PLANS, REPRESENT THE BEST INFORMATION OBTAINABLE FOR DESIGN. LOCATION INFORMATION HAS BEEN OBTAINED FROM THE VARIOUS UTILITY COMPANIES AND IS EITHER FROM COMPANY RECORD DRAWINGS OR COMPANY PROVIDED FIELD LOCATIONS. THE CONTRACTOR WILL BE REQUIRED TO WORK AROUND EXISTING UTILITIES WITHIN THE RIGHT-OF-WAY WHICH DO NOT CONFLICT WITH PROPOSED CONSTRUCTION.
2. RUBBLE FROM THE REMOVAL OF MISCELLANEOUS STRUCTURES AND EXCESS EXCAVATION WHICH IS TO BE WASTED SHALL BE DISPOSED OF ON SITES TO BE PROVIDED BY THE CONTRACTOR. THESE SITES SHALL BE APPROVED BY THE ENGINEER AS TO SUITABILITY, APPEARANCE AND SITE LOCATION. LOCATIONS THAT, IN THE OPINION OF THE ENGINEER, WILL LEAVE AN UNSIGHTLY APPEARANCE WILL NOT BE APPROVED.
3. CONTRACTOR SHALL SATISFY HIMSELF OF SUBSURFACE CONDITIONS PRIOR TO CONSTRUCTION.
4. TREES AND SHRUBS IN PUBLIC RIGHT-OF-WAY WHICH ARE IN DIRECT CONFLICT WITH PROPOSED NEW CONSTRUCTION SHALL BE REMOVED BY THE CONTRACTOR WITH THE ENGINEER'S APPROVAL. TREES AND SHRUBS WHICH ARE NOT IN DIRECT CONFLICT WITH PROPOSED NEW CONSTRUCTION SHALL BE SAVED AND PROTECTED FROM DAMAGE.
5. THE CONTRACTOR SHALL GIVE ALL PROPERTY OWNERS AND/OR TENANTS OF DEVELOPED PROPERTY DIRECTLY ADJUTING THE CONSTRUCTION OF THIS PROJECT A MINIMUM OF TEN (10) DAYS ADVANCE NOTICE PRIOR TO START OF CONSTRUCTION.
6. THE CONTRACTOR SHALL BE RESPONSIBLE FOR PRESERVING PROPERTY IRONS. THE CONTRACTOR WILL BE REQUIRED TO RE-ESTABLISH ANY PROPERTY IRONS WHICH ARE DAMAGED OR DESTROYED BY HIS CONSTRUCTION OPERATIONS. SUCH IRONS SHALL BE RE-ESTABLISHED BY A LICENSED LAND SURVEYOR OR A LICENSED PROFESSIONAL ENGINEER IN ACCORDANCE WITH STATE LAWS.

AS BUILT - JUNE 1988
 BOOKED - JULY, 1988 MCA

NOTE TO CONTRACTOR

This project will be constructed under the supervision of the CITY ENGINEER and conforming to the SPECIFICATIONS of the CITY OF WICHITA. The CONTRACTOR will pay the City of Wichita for all costs of plan review, inspection and bonding per contract.

APPROVED AS NOTED
 By CITY ENGINEER OF WICHITA

Sanitary Sewers _____
 Storm Sewers VRH 2/28/88
 Driveway Approaches _____
 Water Mains _____
 Paving _____

JANUARY, 1988
 PLANS PREPARED BY
 PROFESSIONAL ENGINEERING CONSULTANTS, P.A.
 ENGINEERS
 WICHITA, KANSAS

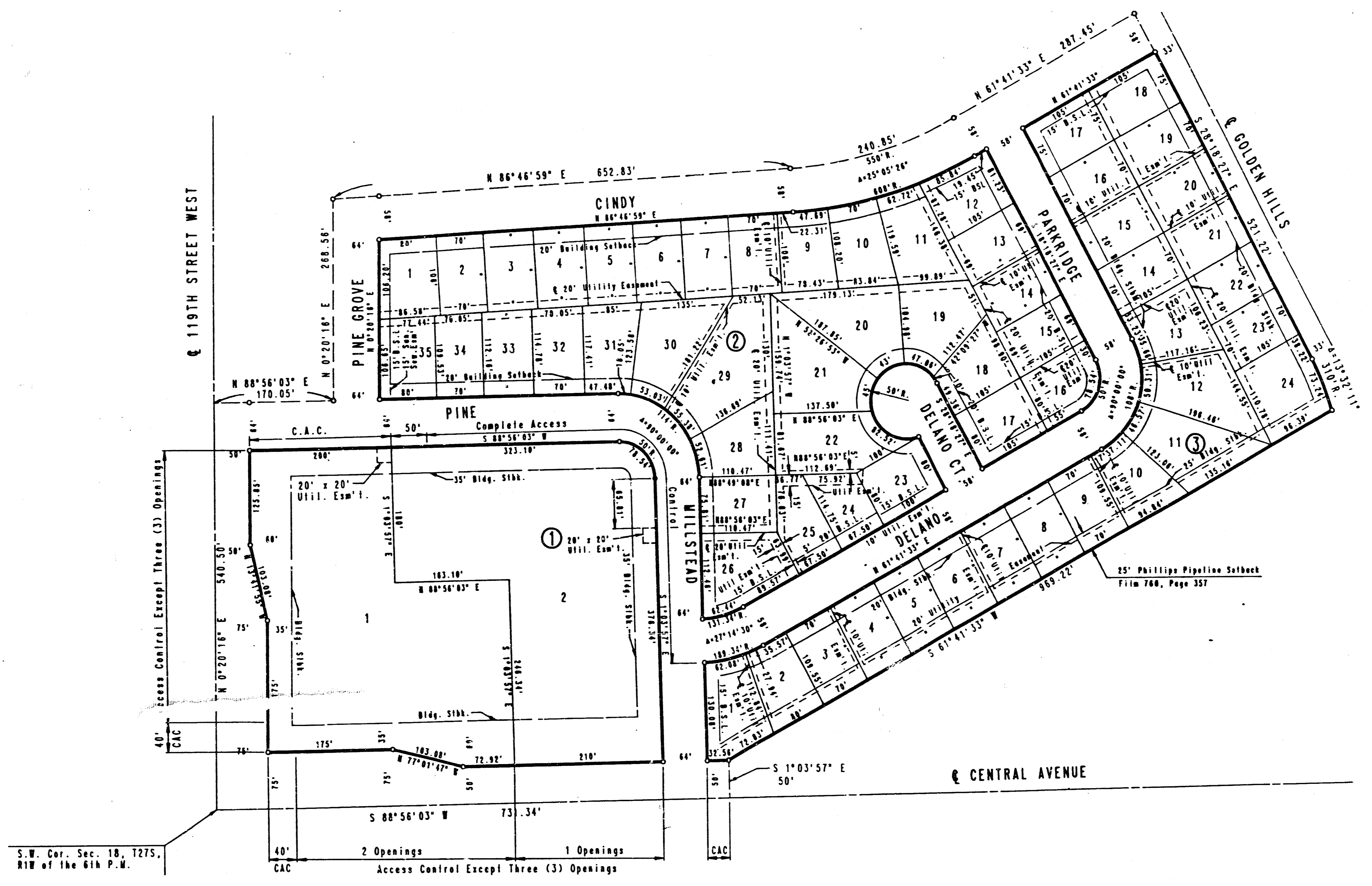


FILMED FROM THE BEST AVAILABLE COPY

PROJECT NO.	SHEET NO.	TOTAL SHEETS
472-74-245-88501-000-033	2	6

GOLDEN HILLS 4TH ADDITION

WICHITA, SEDGWICK COUNTY, KANSAS



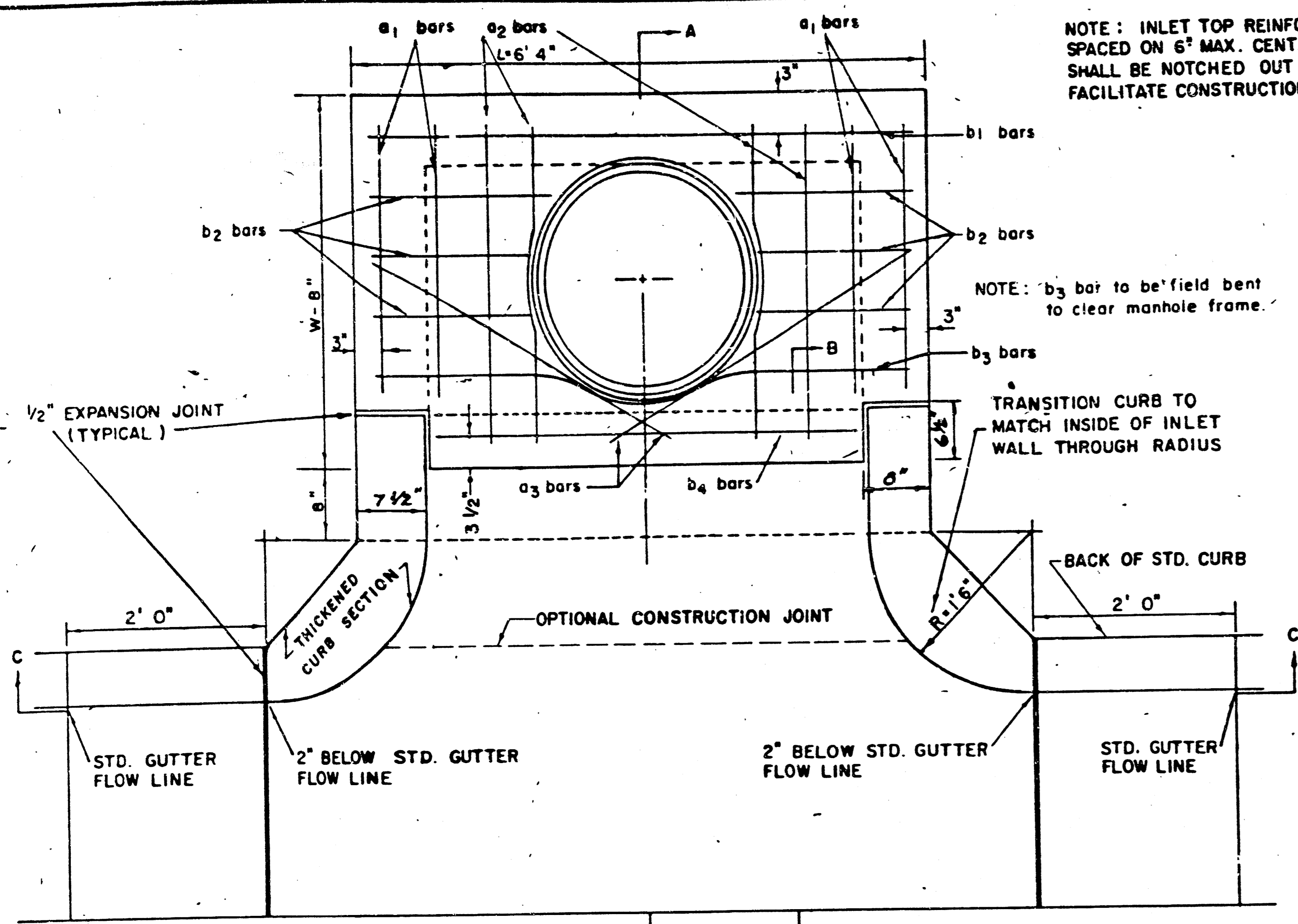
SCALE: 1" = 100'

BENCH MARK: RR SPIKE IN WINGWALL PILE
3000' NORTH OF E. CENTRAL
AVENUE AND 119TH ST. WEST
ELEV. = 1337.98 W.S.L. =
145.58 CITY DATUM

CAC = COMPLETE ACCESS CONTROL

PLAT			
PROFESSIONAL ENGINEERING CONSULTANTS, P.A. ENGINEERS WICHITA, KANSAS			
Designed by	Checked by	Date	Job No.
Drawn by DEP	DEP	2/10/57	88274-2

FILMED FROM THE BEST
AVAILABLE COPY.....



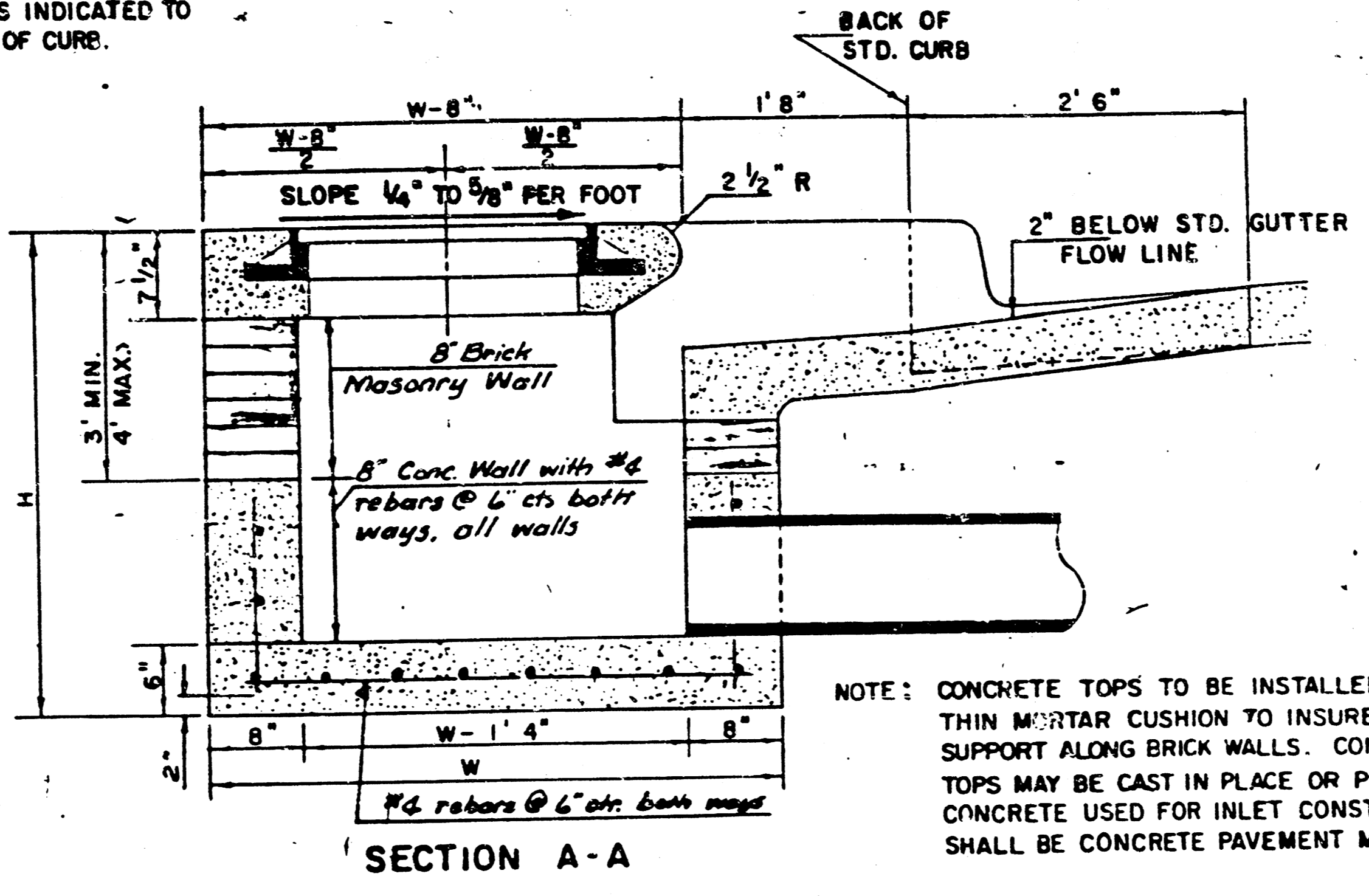
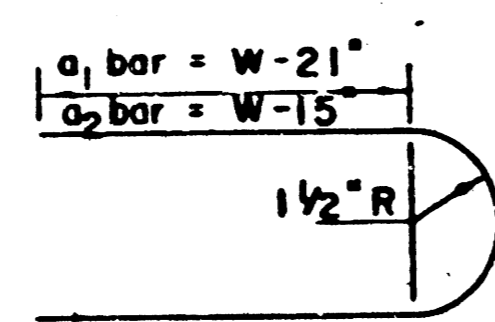
PLAN

STEEL SCHEDULE

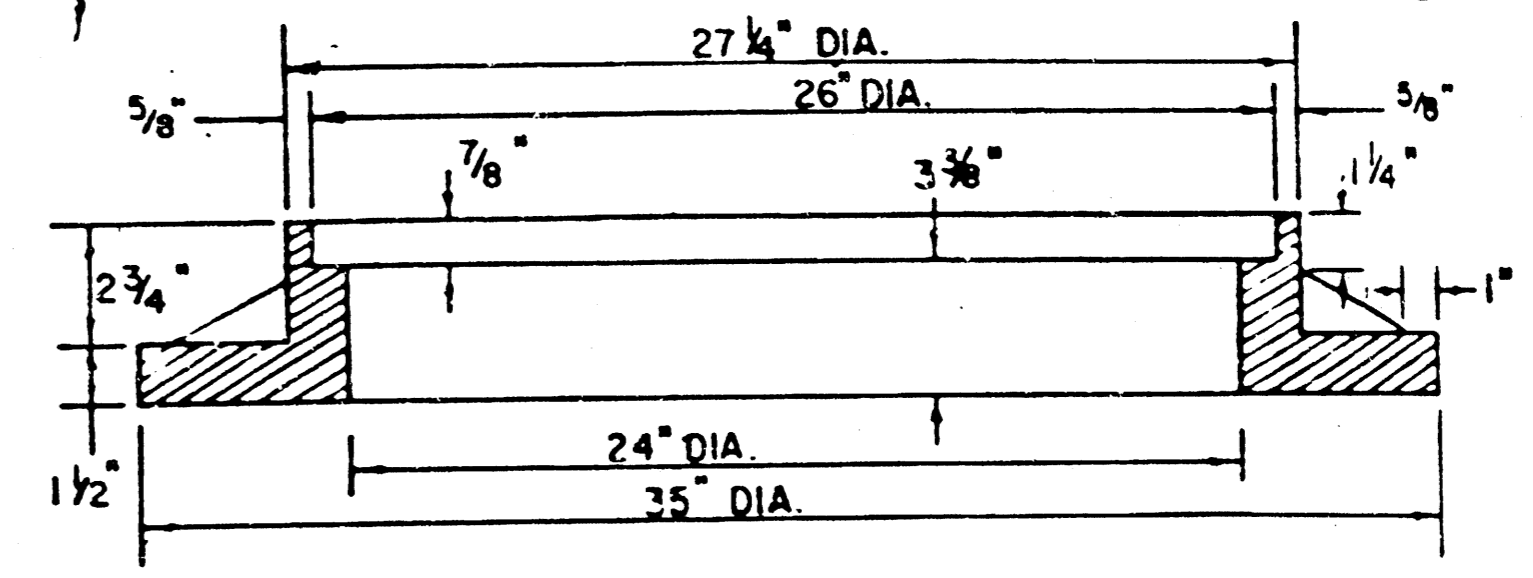
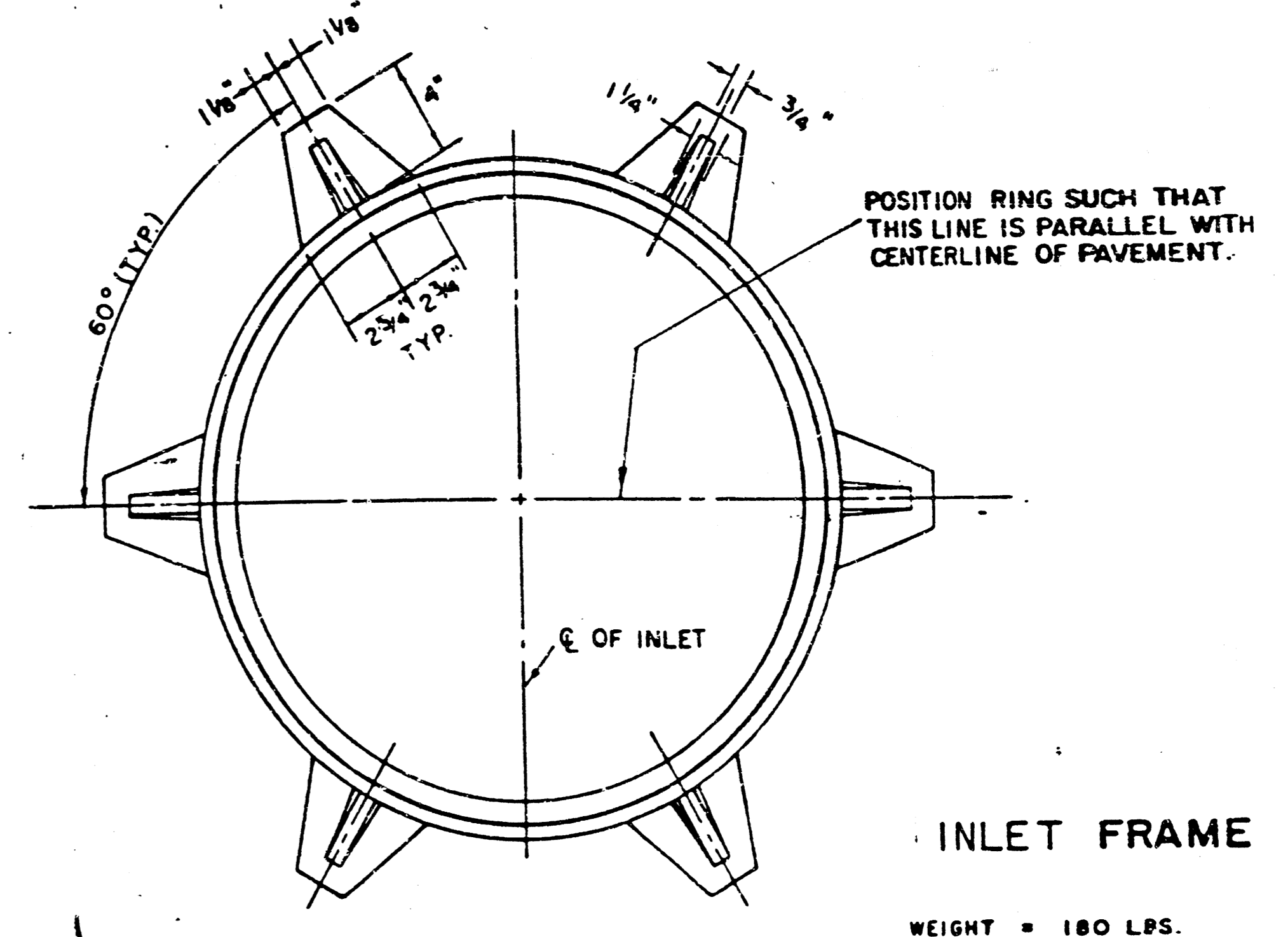
BAR NUMBER	a ₁	a ₂	a ₃	b ₁	b ₂	b ₃	b ₄	WT. LBS.
4	4	2	1	3	5	7	9	6
SIZE	"4	"4	"4	"4	"4	"4	"4	"6
W=4'4"	3'7"	6'7"	4'0"	6'1"	-	-	-	1'9" 6'2" 4'8" 80±
W=5'4"	7'7"	8'7"	5'0"	6'1"	-	-	-	1'9" 6'2" 4'8" 81±
W=6'4"	9'7"	10'7"	6'0"	6'1"	-	-	-	1'9" 6'2" 4'8" 101±
W=7'4"	11'7"	12'7"	7'0"	6'1"	-	-	-	1'9" 6'2" 4'8" 121±
W=8'4"	13'7"	14'7"	8'0"	6'1"	-	-	-	1'9" 6'2" 4'8" 141±

NOTE: a₃ BARS TO BE PLACED APPROX. 2" BELOW TOP OF INLET COVER

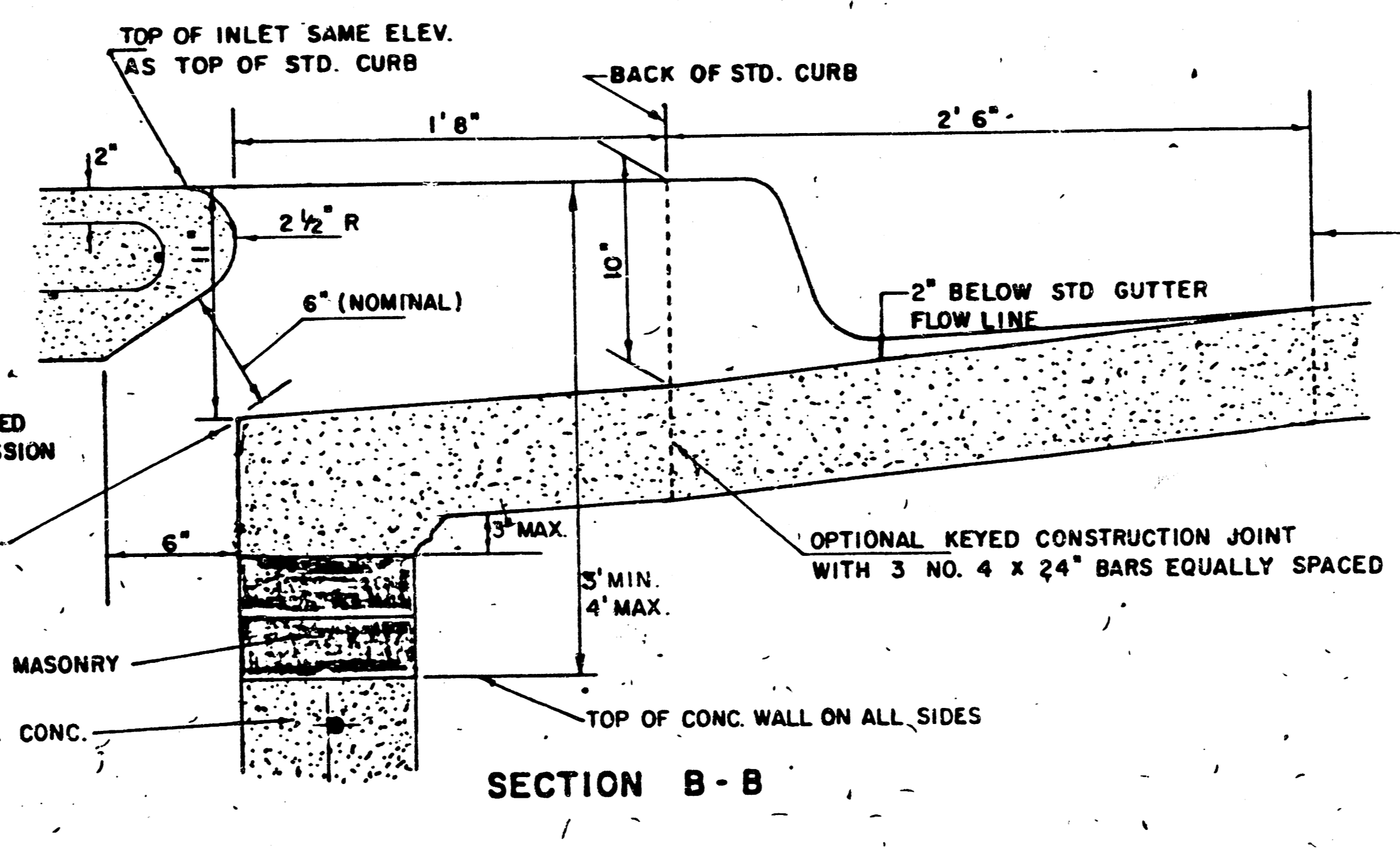
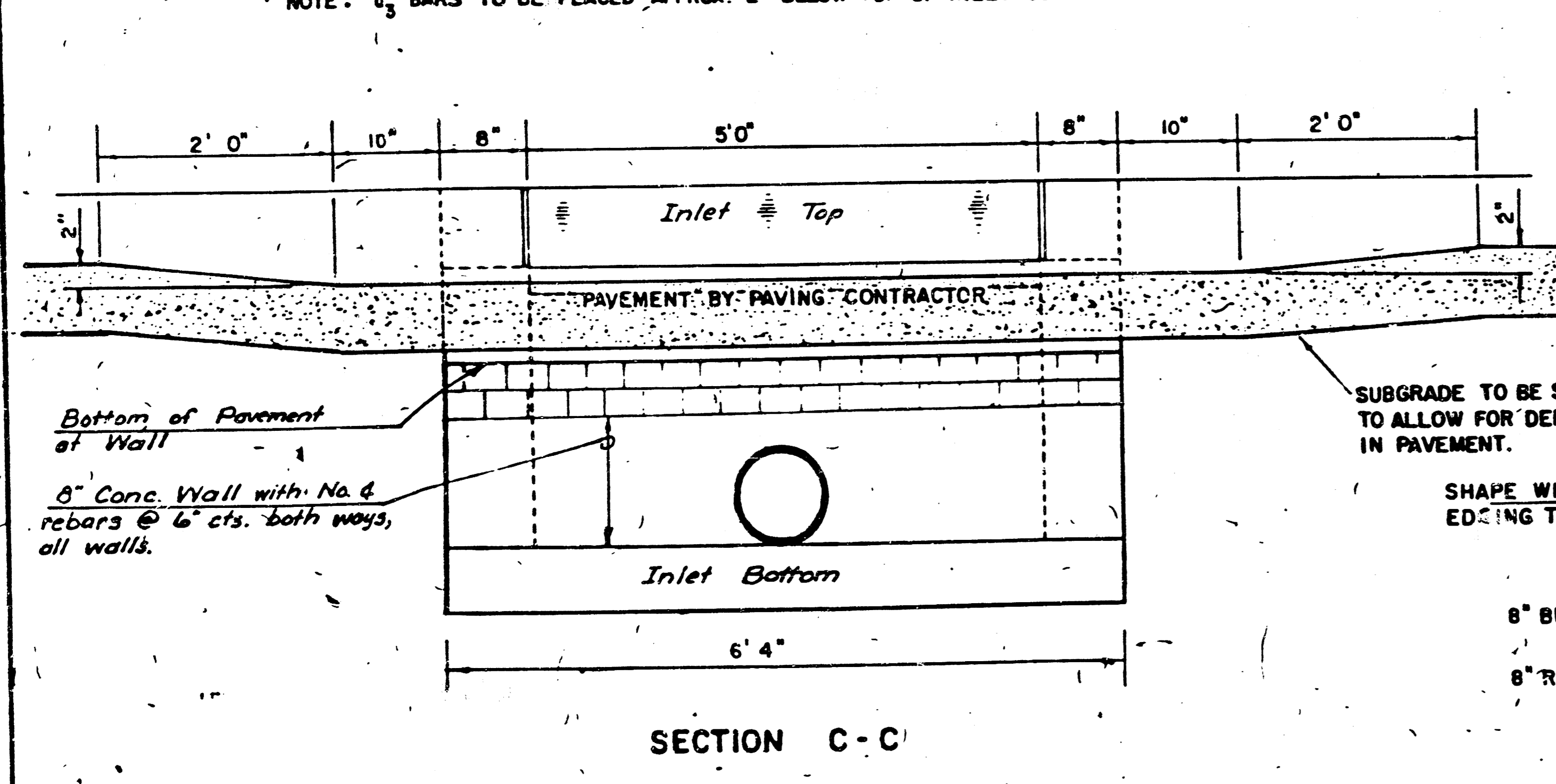
BENDING DIAGRAM



SECTION A-A



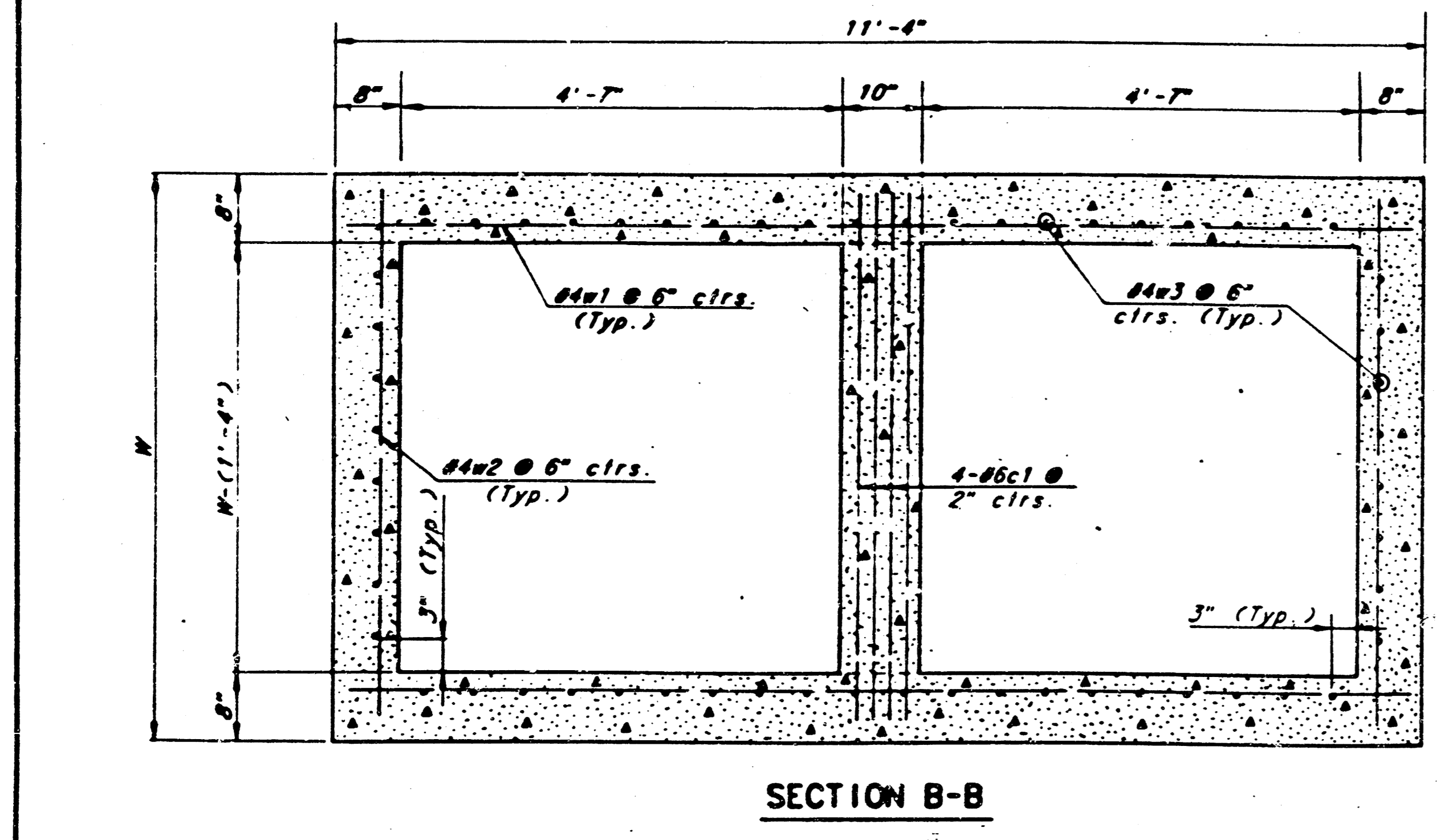
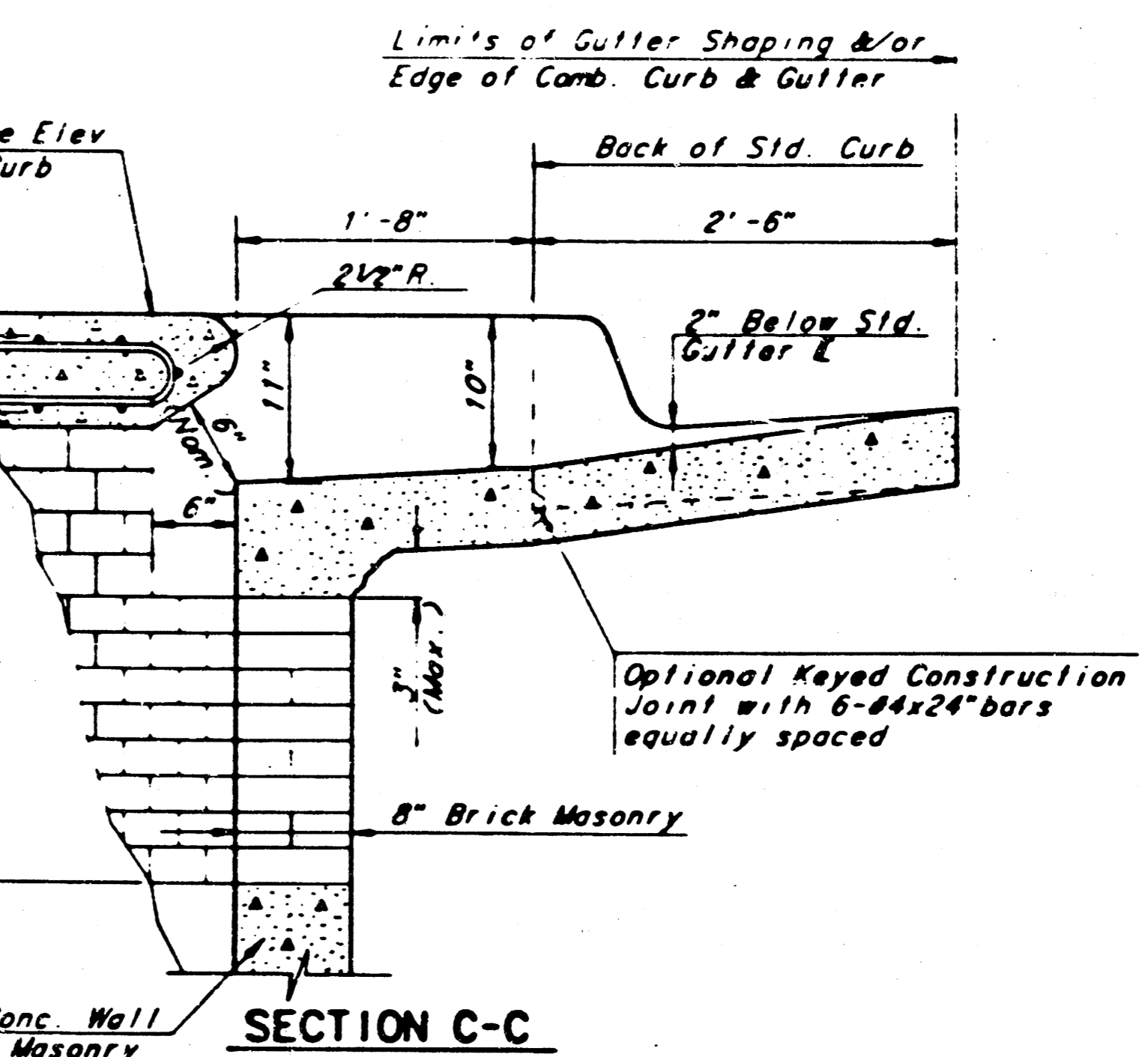
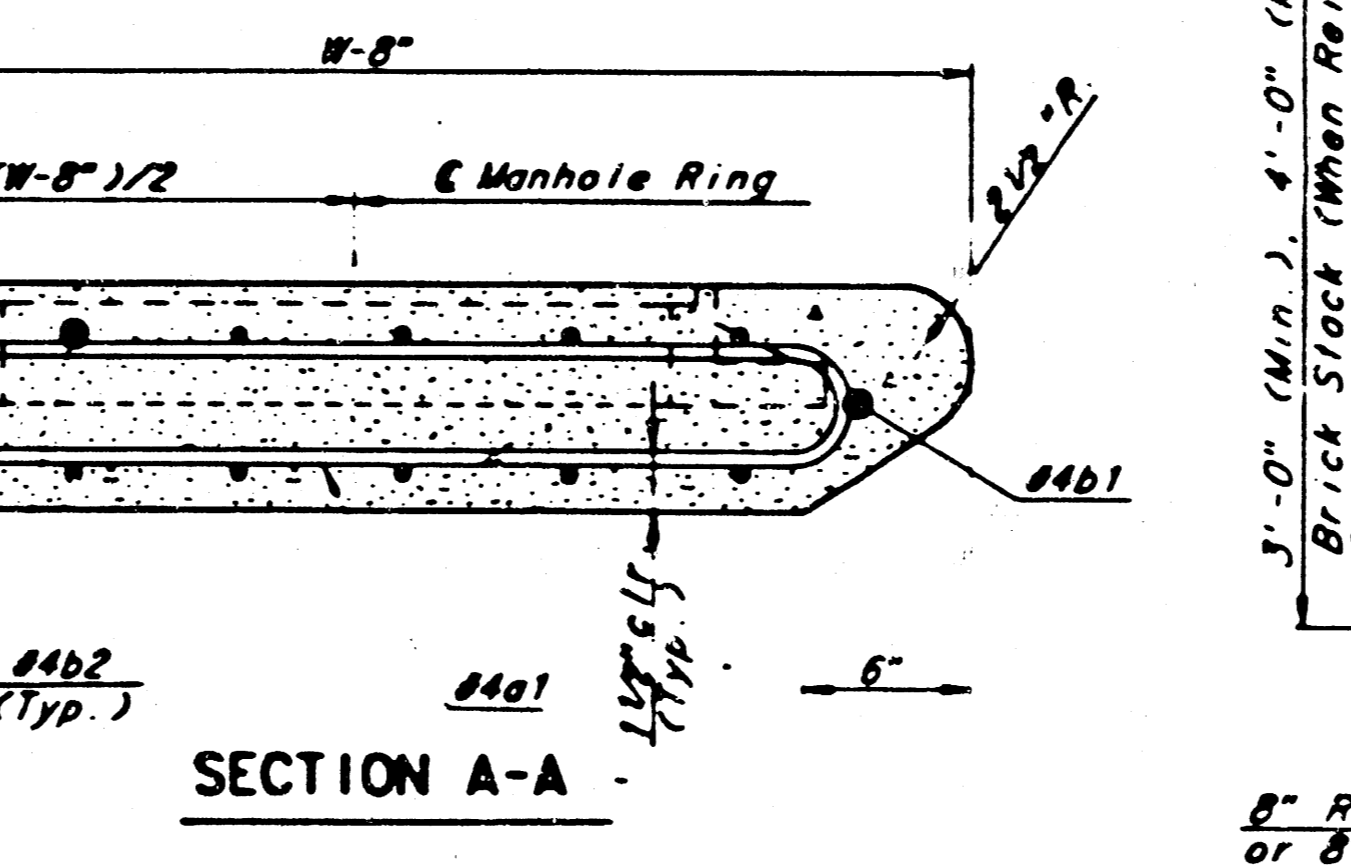
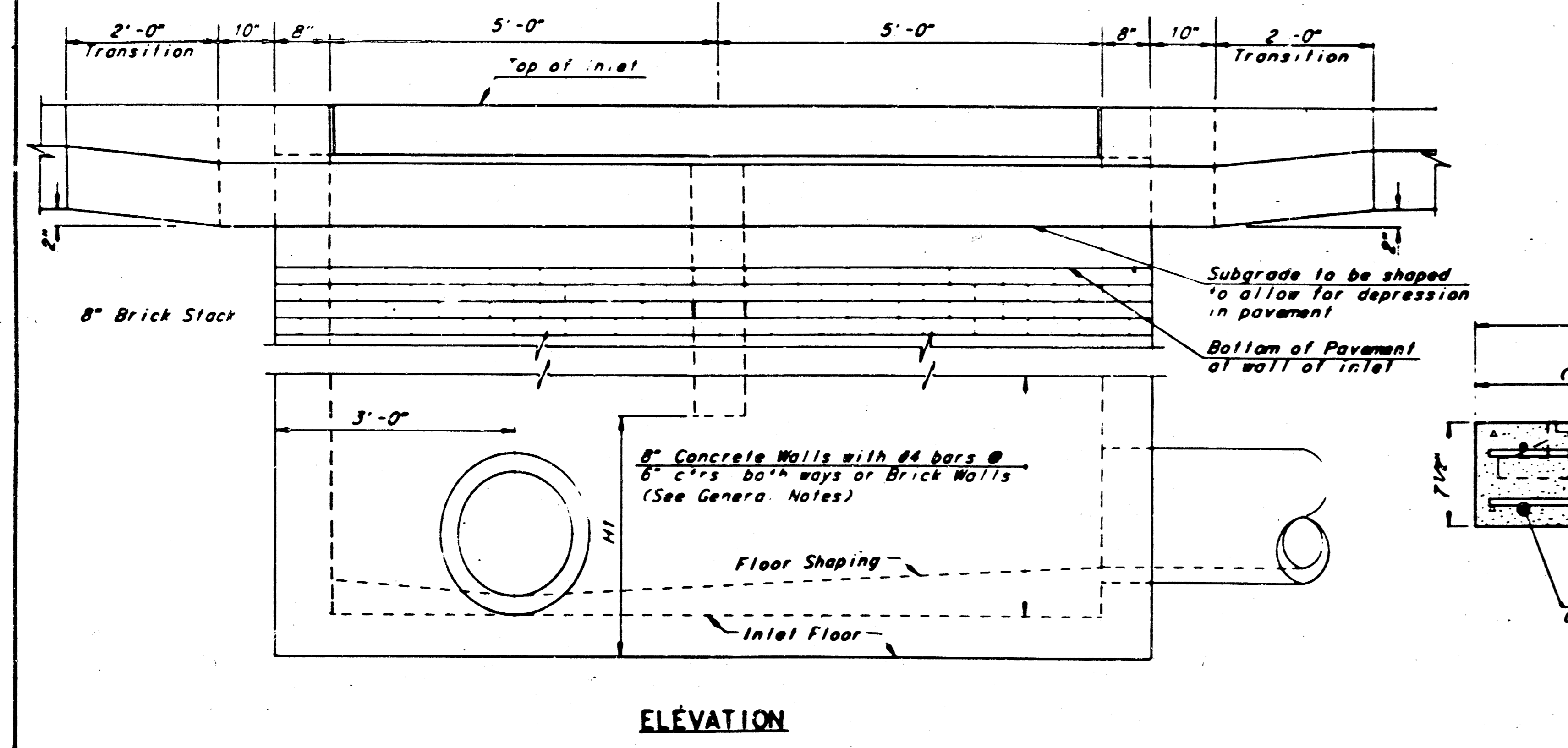
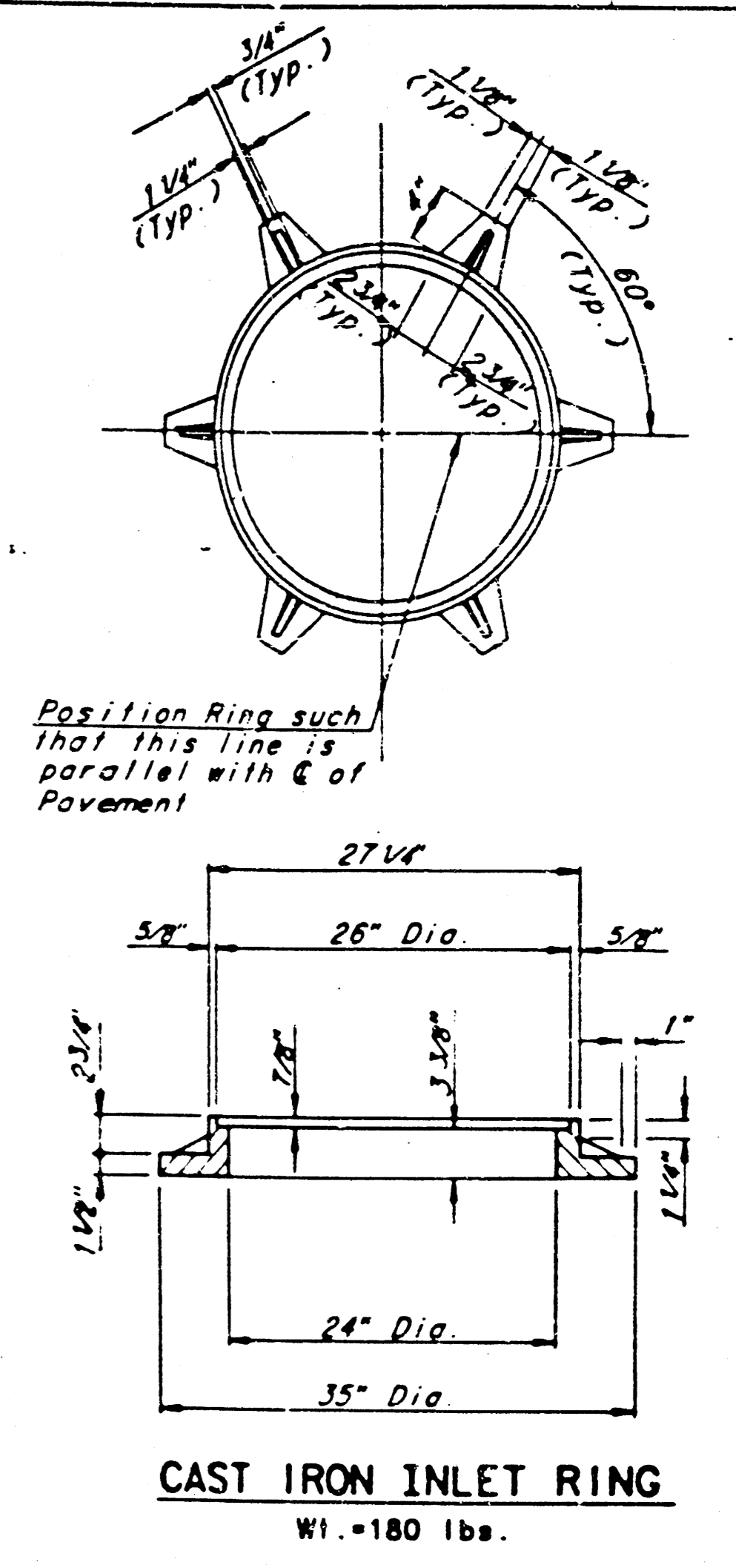
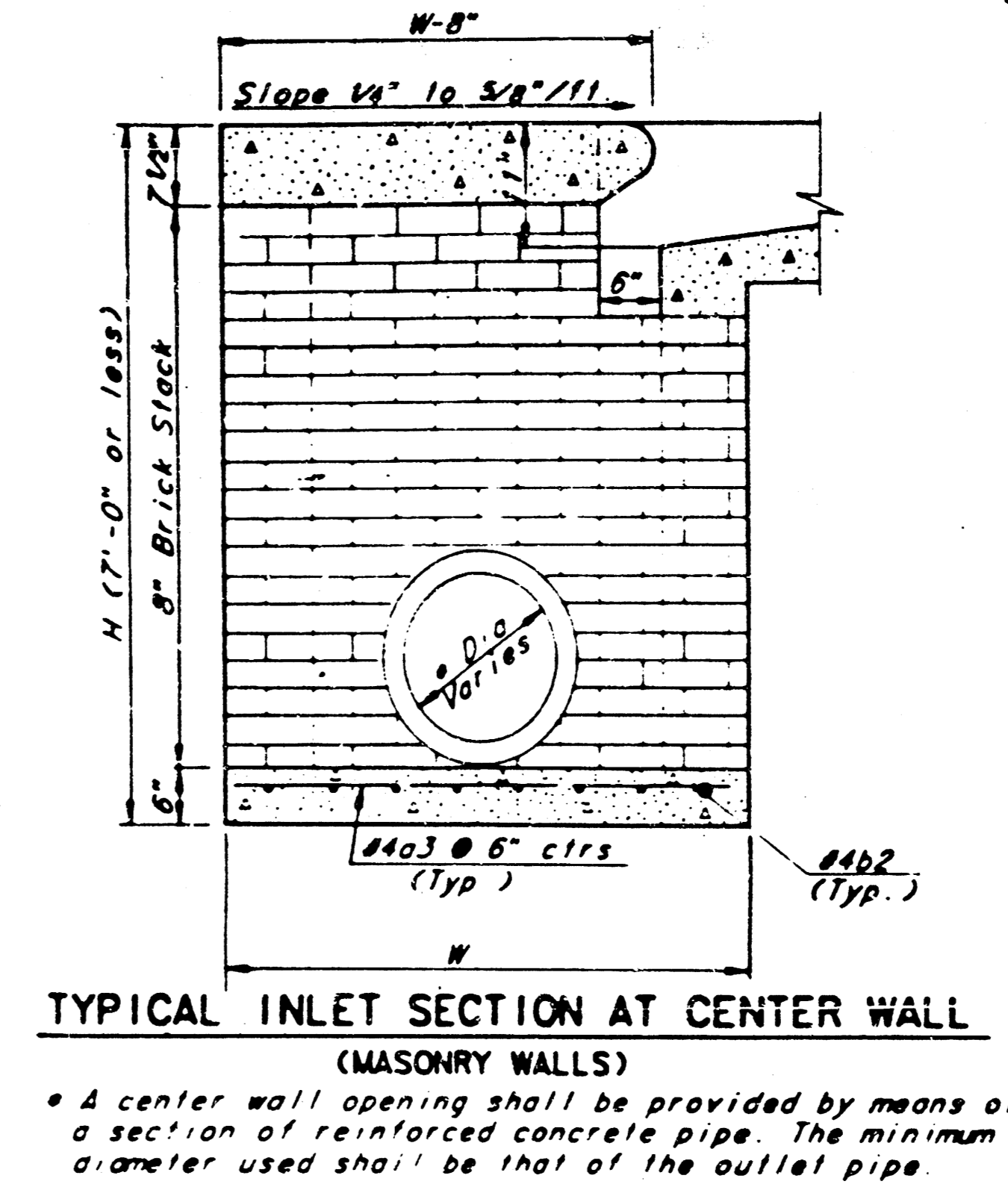
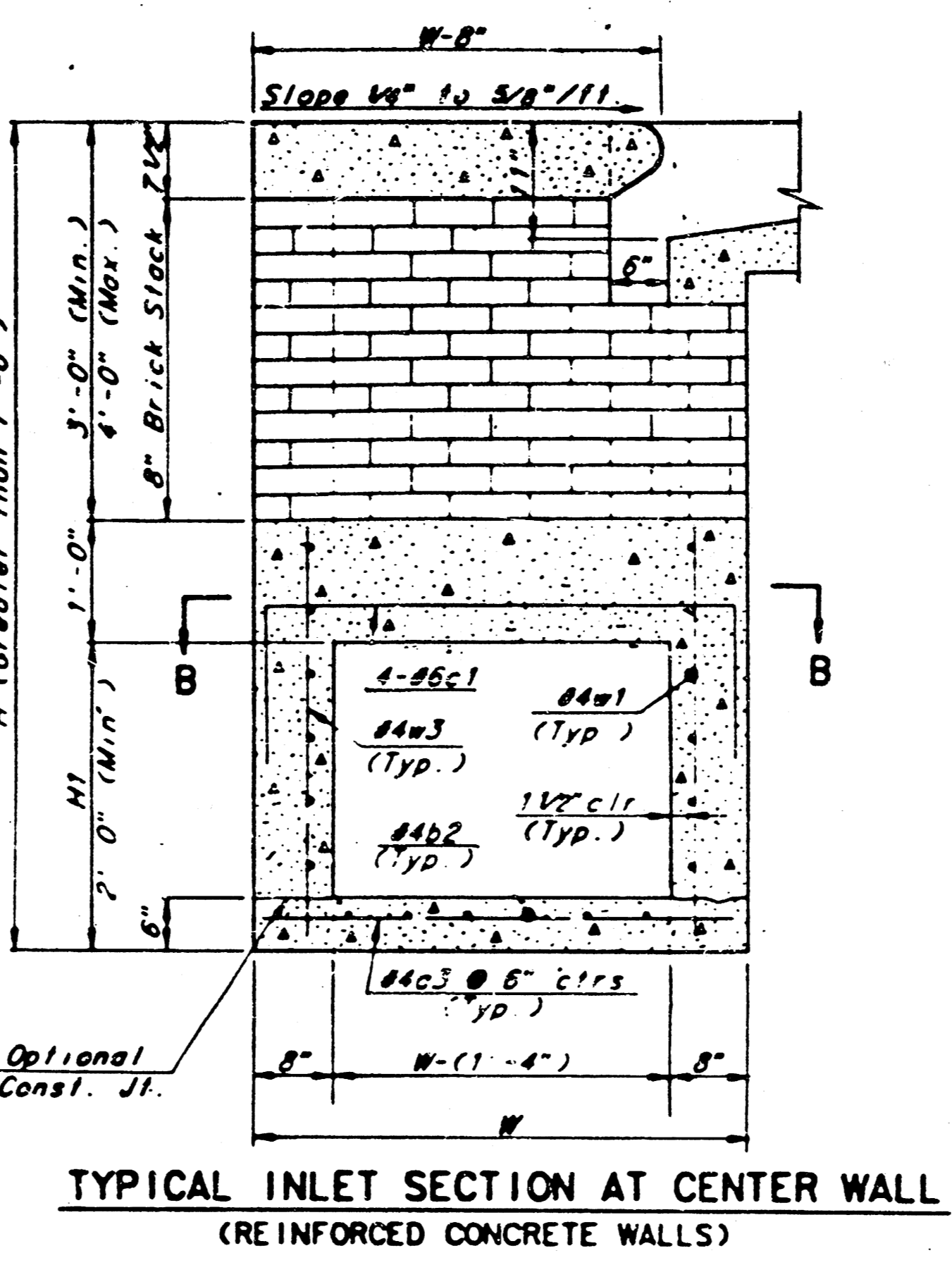
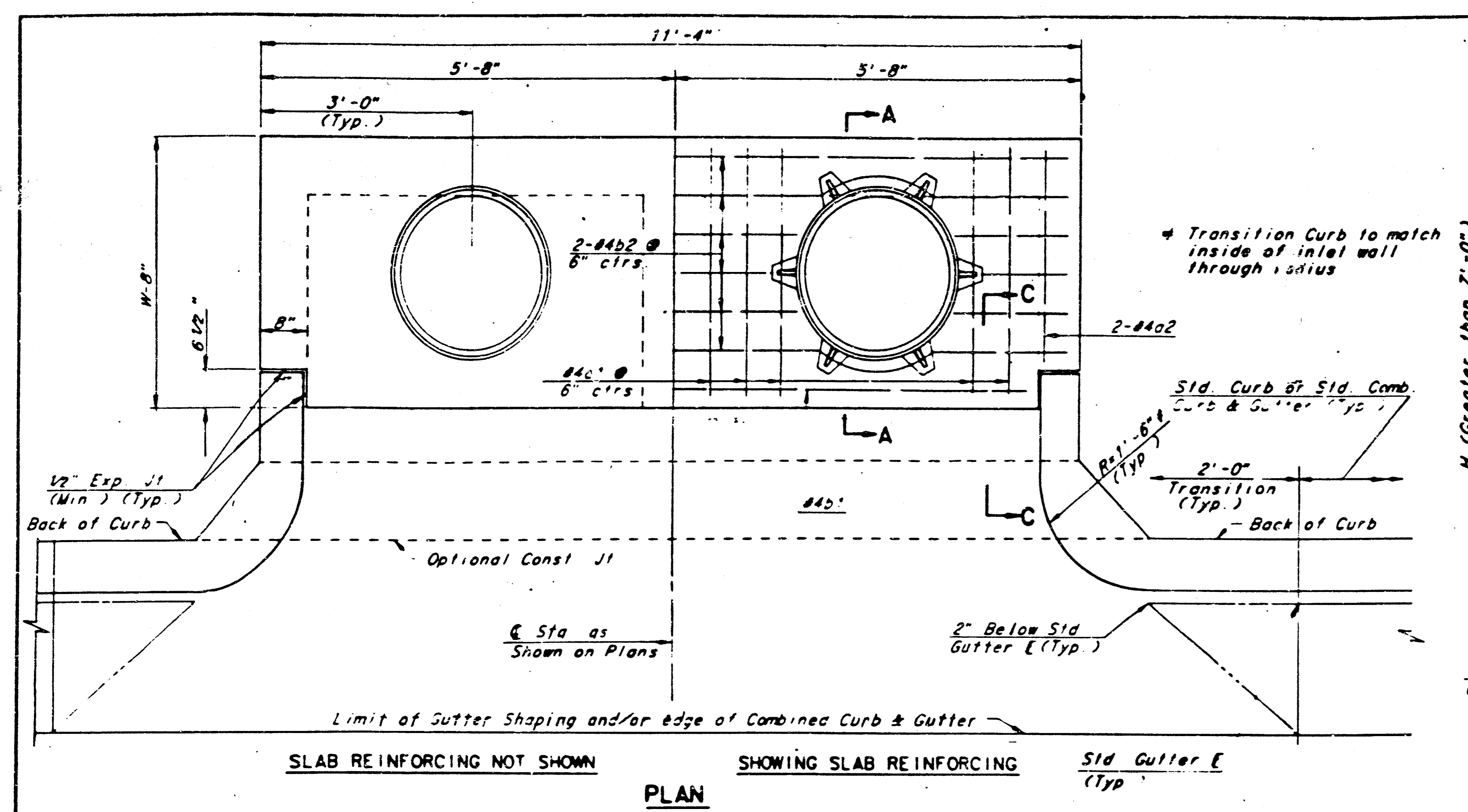
SEE CITY OF WICHITA STANDARD MANHOLE FRAME AND COVER DETAIL SHEET FOR COVER DETAILS TO BE USED WITH INLET FRAME.



REVISED 12-21-1984

DETAIL STANDARD TYPE IA CURB INLET
CITY OF WICHITA, KANSAS
INLET OPENING = 6" x 5' 0"
(L = 6'-4")
JUNE 1984

FILMED FROM THE BEST AVAILABLE COPY



SLAB AND FLOOR REINFORCING

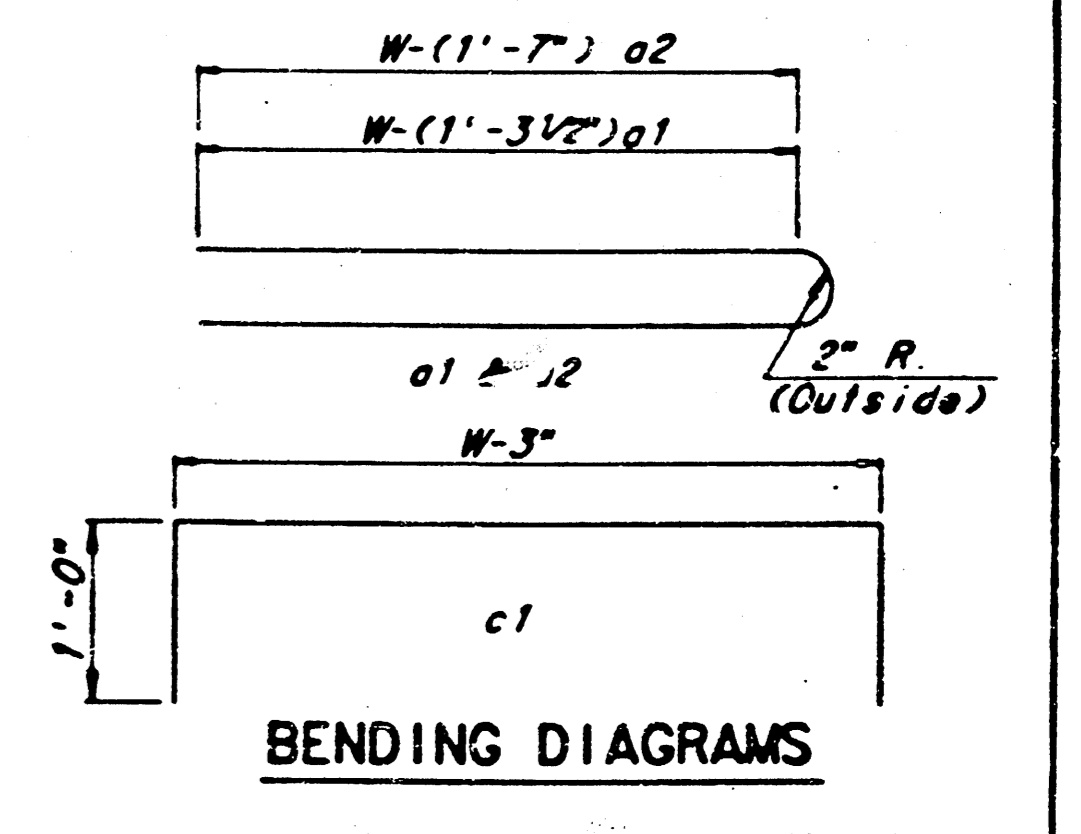
MARK	SIZE	W=4'-4"		W=5'-4"		W=6'-4"		W=7'-4"		W=8'-4"	
		NO.	LENGTH	NO.	LENGTH	NO.	LENGTH	NO.	LENGTH	NO.	LENGTH
a1	#4	13	6'-7 1/4"	13	8'-9 1/4"	13	10'-7 1/4"	13	12'-7 1/4"	13	14'-7 1/4"
a2	#4	2	6'-0"	2	8'-0"	2	10'-0"	2	12'-0"	2	14'-0"
a3	#4	20	4'-1"	20	5'-1"	20	6'-1"	20	7'-1"	20	8'-1"
b1	#4	1	9'-8"	1	9'-8"	1	9'-8"	1	9'-8"	1	9'-8"
b2	#4	18	11'-1"	24	11'-1"	30	11'-1"	36	11'-1"	42	11'-1"

WALL REINFORCING

MARK	SIZE	W=4'-4"		W=5'-4"		W=6'-4"		W=7'-4"		W=8'-4"	
		NO.	LENGTH	NO.	LENGTH	NO.	LENGTH	NO.	LENGTH	NO.	LENGTH
c1	#6	4	6'-1"	4	7'-1"	4	8'-1"	4	9'-1"	4	10'-1"
w1	#4	0	11'-1"	0	11'-1"	0	11'-1"	0	11'-1"	0	11'-1"
w2	#4	0	4'-1"	0	5'-1"	0	6'-1"	0	7'-1"	0	8'-1"
w3	#4	0	0	0	0	0	0	0	0	0	0

* Field bend or cut Reinforcing as required for clearance
 ① 4(HI-6") x 4 (HI-6") Rounded down to nearest 0.5'
 ② 40 x 4 (W - 16") ③ HI (8")

- GENERAL NOTES**
- THE CONTRACTOR SHALL BE REQUIRED TO CONSTRUCT 8" BRICK MASONRY WALLS BETWEEN THE CONCRETE INLET BASE AND TOP ON THIS INLET WHEN W=6'-4" OR LESS AND H=7'-0" OR LESS. WHEN W IS GREATER THAN 6'-4" AND H IS LESS THAN 7'-0" THE OUTSIDE INLET WALLS BELOW THE BRICK STACK SHALL BE REINFORCED CONCRETE CONSTRUCTION AND THE CENTER WALL SHALL BE OF MASONRY CONSTRUCTION AS SHOWN FOR THE MASONRY WALL OPTION.
 - INLET INVERT SHALL BE SHAPED WITH 8 SACK SAND MIX CONCRETE TO CREATE FLOW CHANNELS AND TO INCREASE HYDRAULIC EFFICIENCY SUCH THAT THE INLET WILL BE SELF CLEANING BETWEEN ALL INLET AND/OR OUTLET PIPES.
 - CONCRETE TOPS TO BE INSTALLED ON THIN MORTAR CUSHION TO INSURE FULL SUPPORT ALONG BRICK WALLS. CONCRETE TOPS MAY BE CAST IN PLACE OR PRECAST. CONCRETE USED FOR INLET CONSTRUCTION SHALL BE CONCRETE PAVEMENT MIX.
 - INLET TOP REINFORCING SHALL BE SPACED ON 6" MAX. CENTERS. INLET LIDS SHALL BE NOTCHED OUT AS INDICATED TO FACILITATE CONSTRUCTION OF CURB BARS IN INLET TOP TO BE FIELD BENT OR CUT TO CLEAR MANHOLE RING.
 - THE ENDS OF ALL PIPES INSTALLED IN INLETS SHALL BE CUT OFF FLUSH WITH THE INSIDE FACE OF THE INLET WALL.



STANDARD TYPE 1A CURB INLET

INLET OPENING = 6" x 10'-0"

WICHITA, KANSAS

Designed by BER, KJS, AMB Checked by AMB
 Drawn by JGP Date Nov. 1984 Job No. 92-26516-8

FILMED FROM THE BEST AVAILABLE COPY

MANHOLE FRAME AND COVER DETAIL

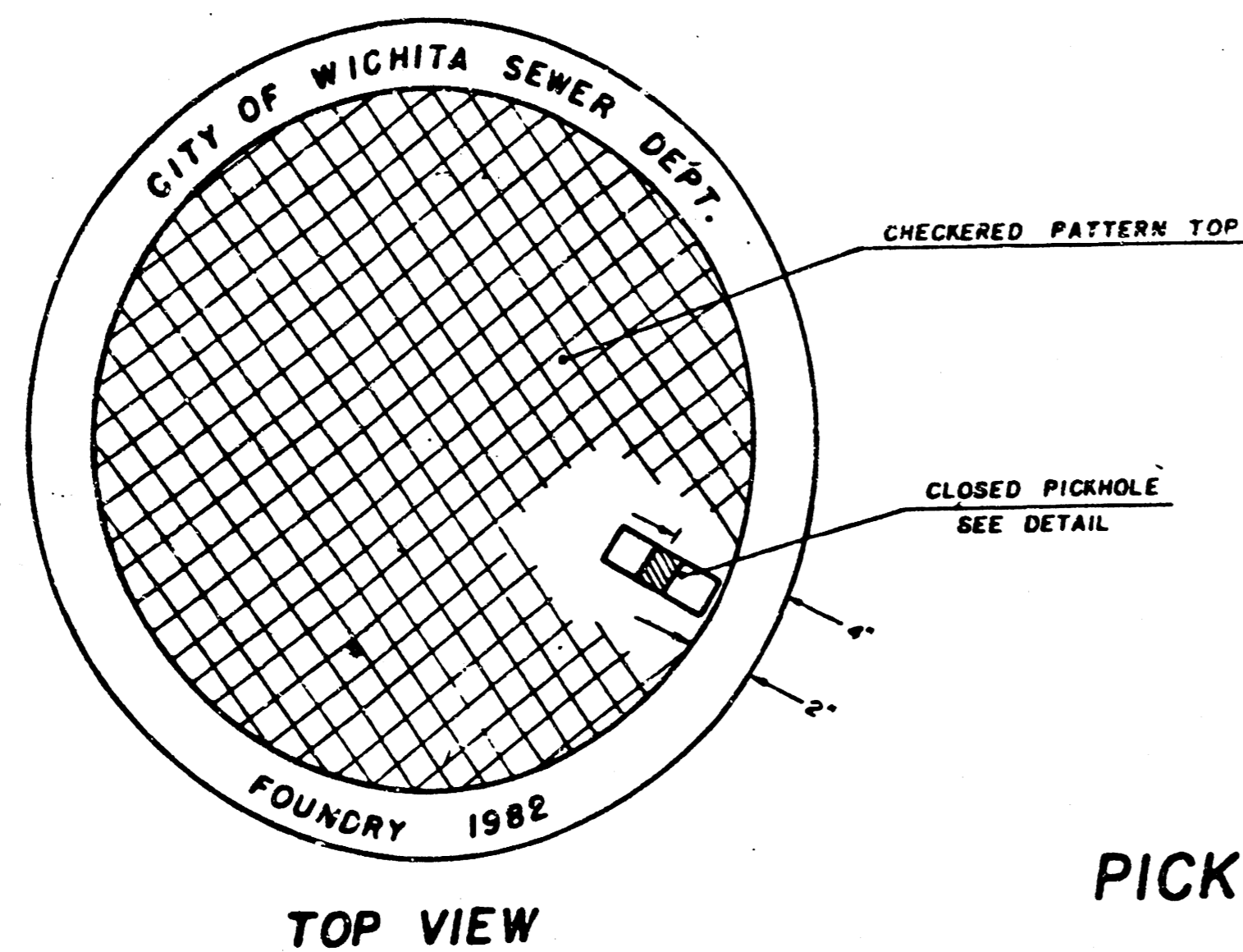
ADOPTED AS STANDARD DESIGN

BY

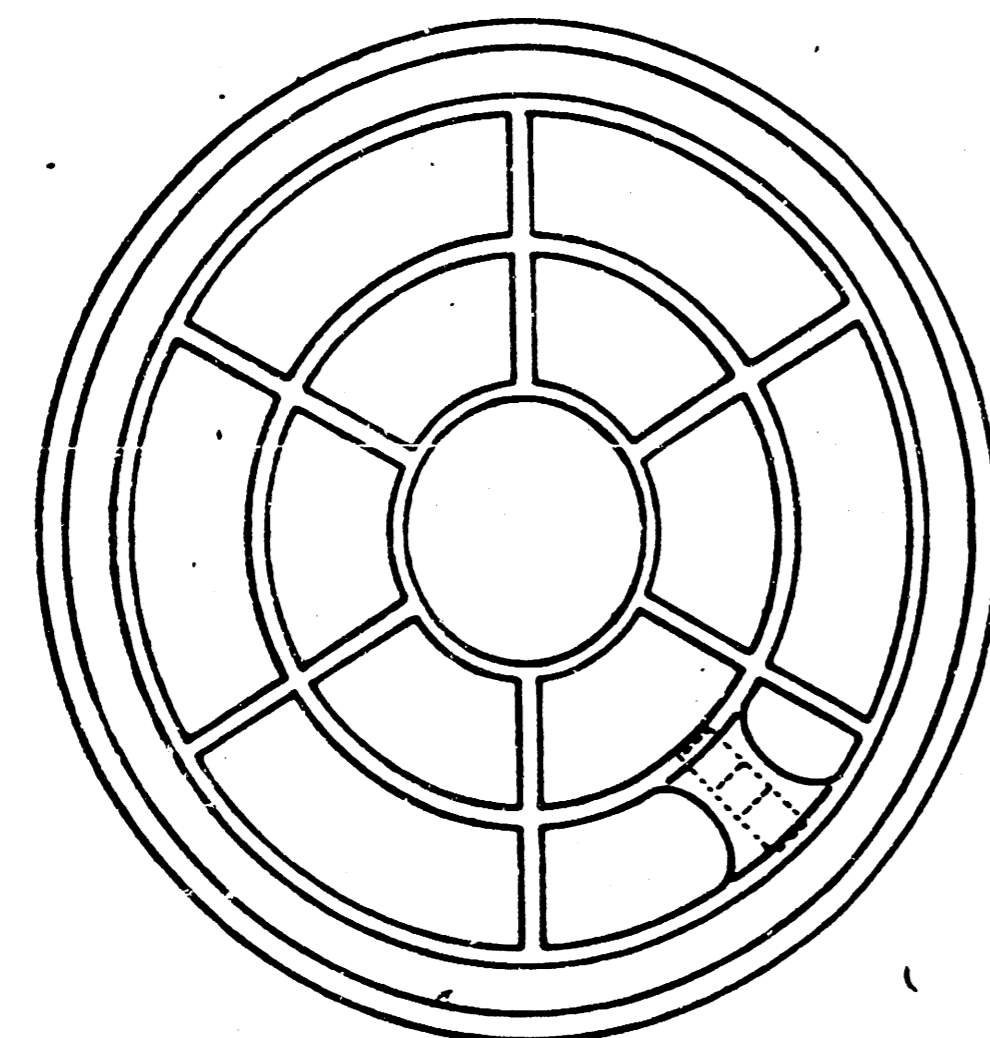
City of Wichita, Kansas

MANHOLE COVER

Weight: 180 Lbs.

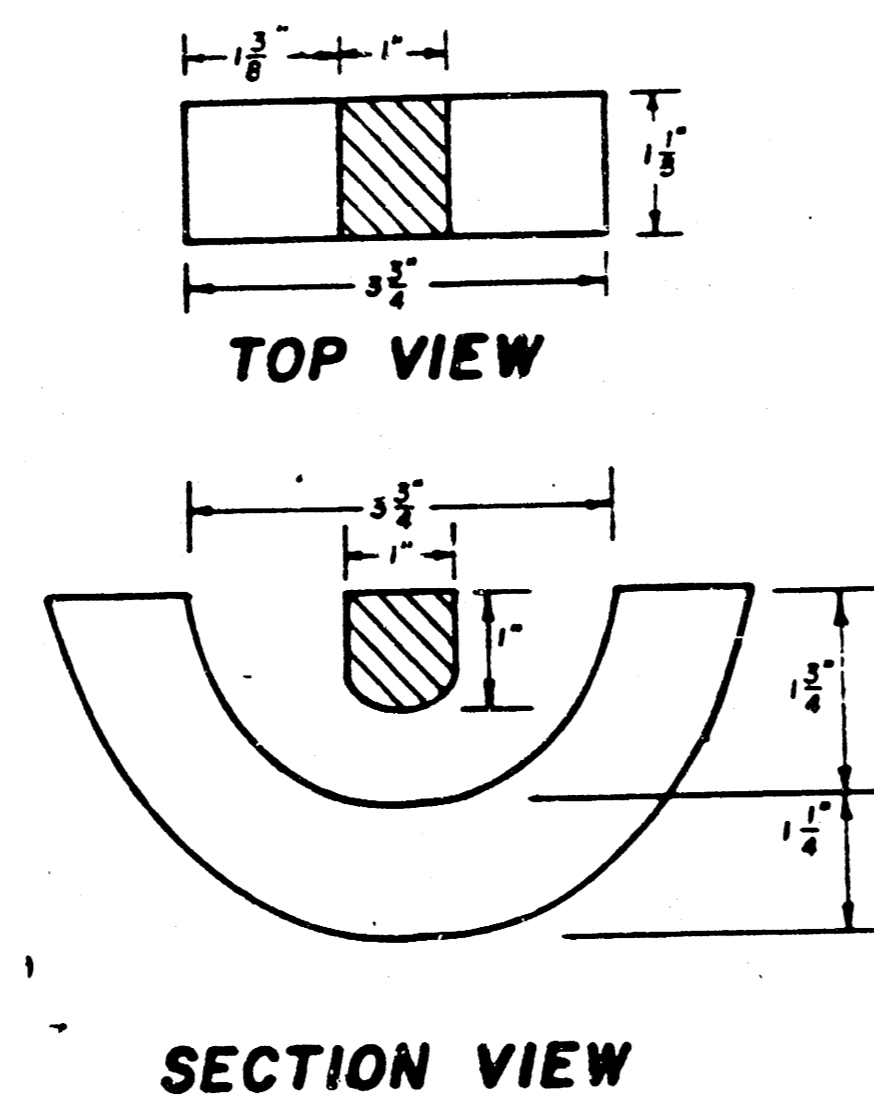


TOP VIEW



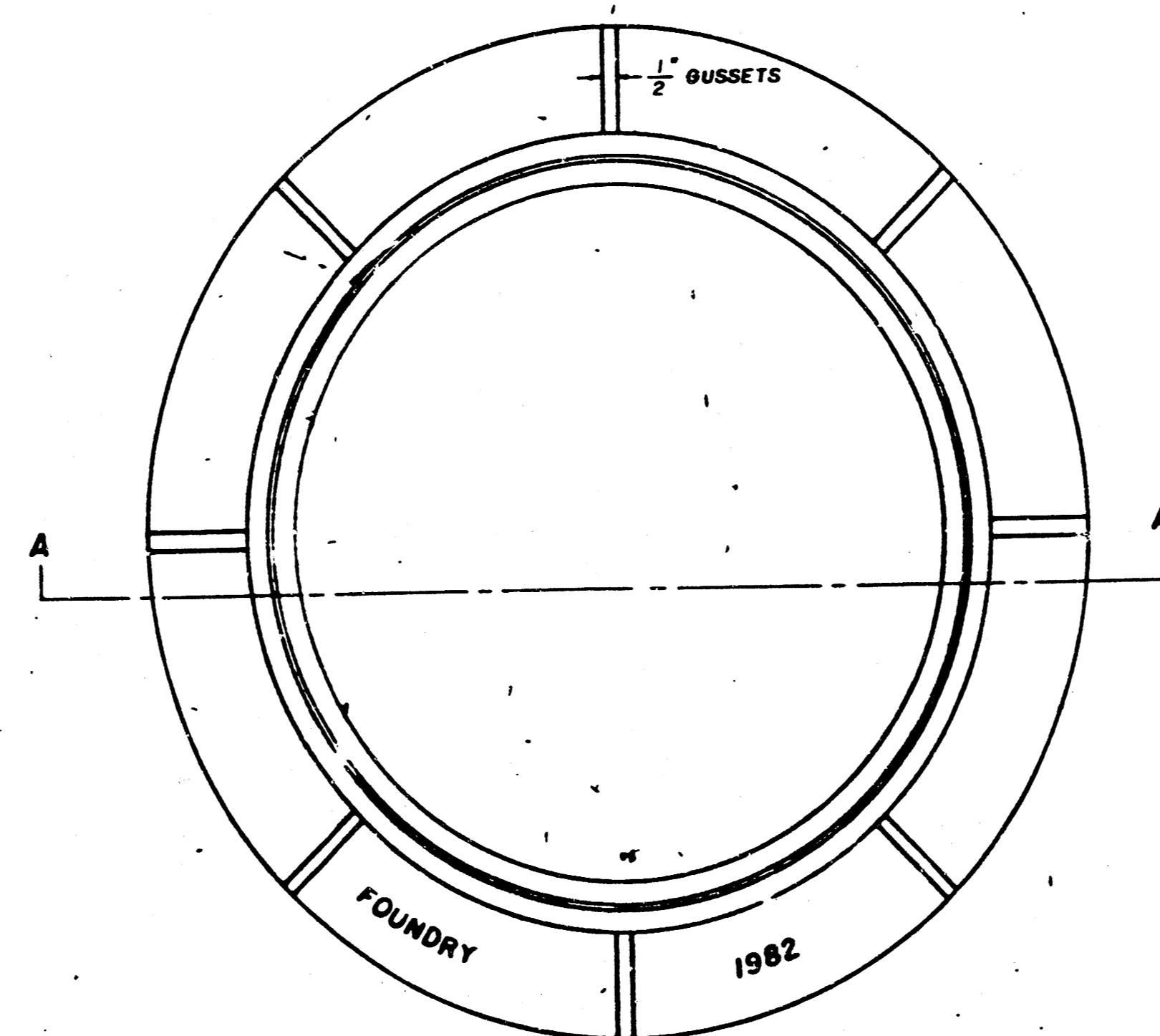
BOTTOM VIEW

PICKHOLE DETAIL

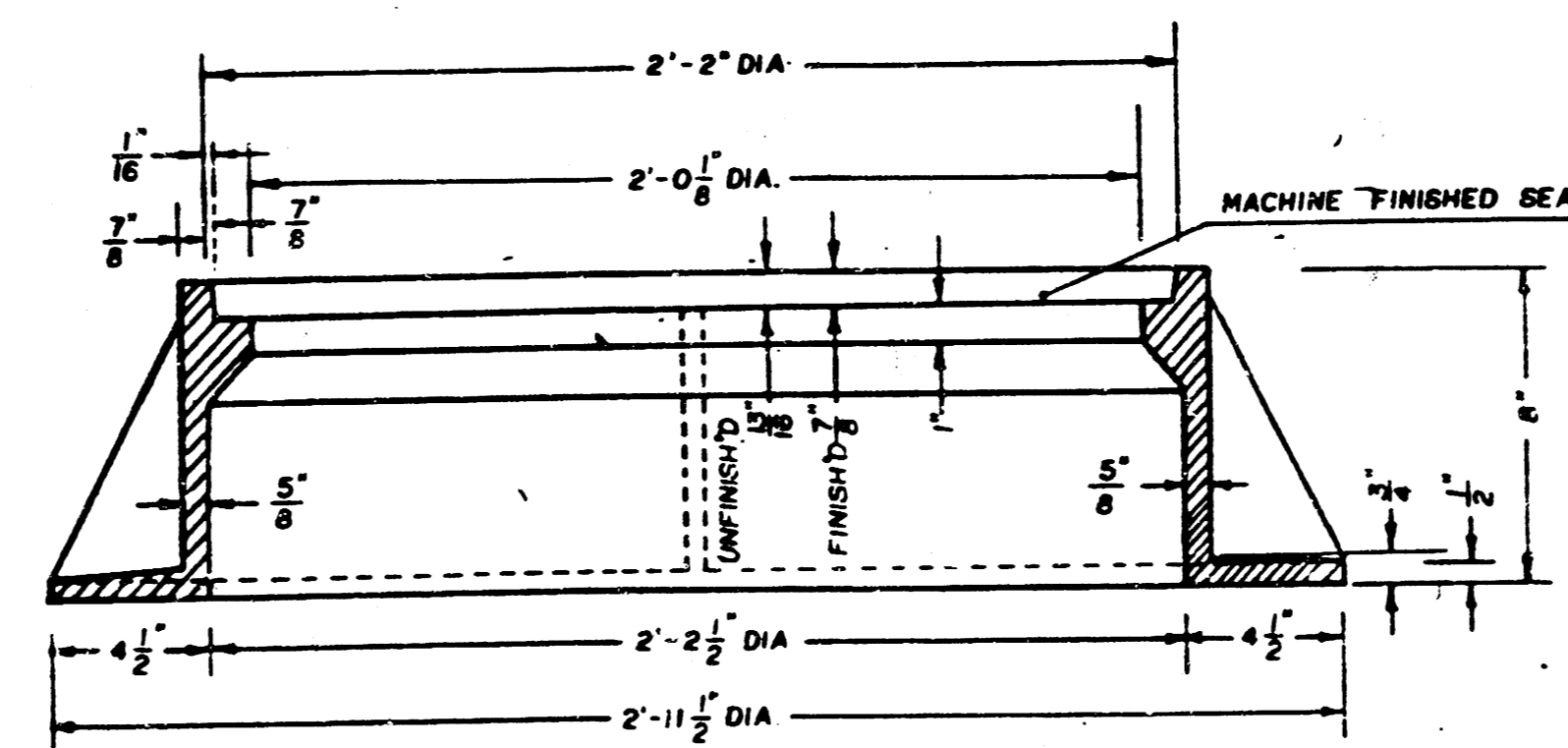


MANHOLE FRAME

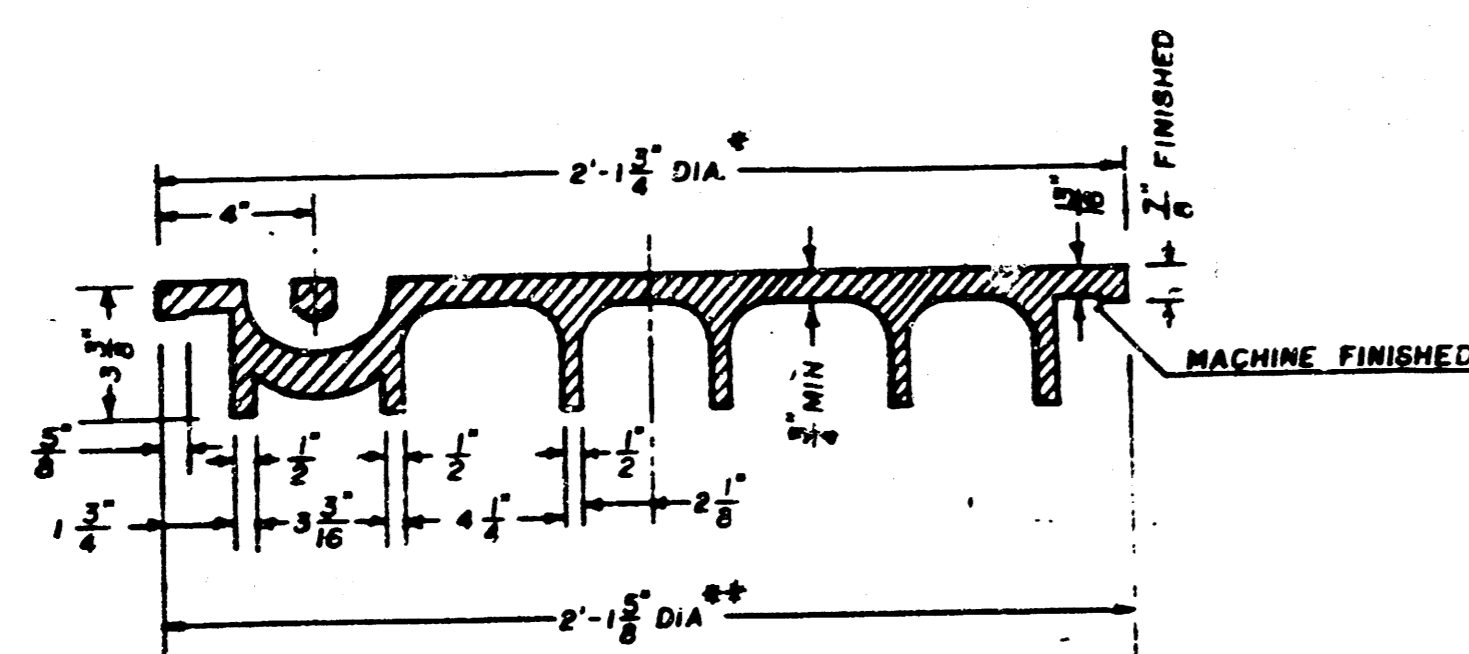
Weight: 240 Lbs.



TOP VIEW



SECTION A-A



SECTION VIEW

* OUTSIDE DIA. TOP OF COVER
** OUTSIDE DIA. BOTTOM OF COVER

GENERAL NOTES

- MANHOLE CASTINGS SHALL BE MANUFACTURED USING GOOD QUALITY GRAY IRON CONFORMING TO CLASS 30 OF A.S.T.M. DESIGNATION A-48. DIMENSIONS AND WEIGHTS SHOWN ON THE DETAILED DRAWINGS SHALL BE CONSIDERED AS MINIMUM REQUIREMENTS AND ANY DEVIATIONS FROM THE DIMENSIONS SHOWN MUST BE SPECIFICALLY APPROVED. THE FINISHED CASTINGS SHALL BE OF UNIFORM QUALITY, FREE FROM BLOWHOLES, POROSITY, HARD SPOTS, SHRINKAGE DISTORTIONS OR OTHER DEFECTS.
- MANHOLE CASTINGS SHALL BE COATED WITH AN ASPHALT PAINT RESULTING IN A SMOOTH, TOUGH AND TENACIOUS COATING WHICH IS NOT BRITTLE OR TACKY.
- MANHOLE CASTINGS SHALL BE MANUFACTURED SUCH THAT A COVER MANUFACTURED BY ANY ONE FOUNDRY WILL FIT INTERCHANGEABLY INTO A FRAME MANUFACTURED BY ANOTHER FOUNDRY AND STILL MEET ALLOWABLE CLEARANCES AND NON-ROCKING REQUIREMENTS. THIS WILL REQUIRE MANUFACTURING OF THE MATCHING FACES ON THE COVER AND THE FRAME TO CLOSE TOLERANCES.
- THE OUTSIDE CIRCUMFERENCE OF THE VERTICAL FACE OF THE COVER AND THE INSIDE CIRCUMFERENCE OF THE VERTICAL FACE IN THE FRAME RECESS SHALL BE MANUFACTURED TO TOLERANCES SUCH THAT THE CLEARANCE BETWEEN THE COVER AND FRAME WILL NOT EXCEED 1/8" AT ANY POINT AROUND THE CIRCUMFERENCE OF THE COVER. THE SEATING SURFACES BETWEEN THE COVER AND FRAME SHALL BE MACHINED SUCH THAT THESE SURFACES SHALL MAKE FULL CONTACT FOR THEIR FULL CIRCUMFERENCE TO PRECLUDE THE COVER FROM ROCKING IN THE FRAME.
- THE MANHOLE FRAME AND COVER SHALL BE MARKED WITH LETTERING INDICATING THE NAME OF THE MANUFACTURER AND THE YEAR WHEN THE COVER OR FRAME WAS CAST. THE COVER SHALL BE FURTHER IDENTIFIED WITH REGARDS TO OWNERSHIP USING LETTERS AT LEAST 1" IN HEIGHT. THIS IDENTIFICATION SHALL BE "CITY OF WICHITA SEWER DEPARTMENT". THE WORD DEPARTMENT MAY BE ABBREVIATED. THE TEXTURE OF THE TOP SURFACE OF THE COVER SHALL BE MANUFACTURED IN A CHECKERED PATTERN DESIGN AS INDICATED ON THE DRAWINGS. SMOOTH BLOCKOUTS SHALL BE UTILIZED TO HIGHLIGHT THE LETTERING ON THE COVER SURFACE. THE TOTAL AREA OF SMOOTH SURFACE BLOCKOUT SHALL NOT EXCEED THE AREA AS INDICATED ON THE DRAWING. POSITIONING OF SMOOTH BLOCKOUTS AND LETTERING MAY VARY FROM THAT SHOWN ON THE DETAILED DRAWING.