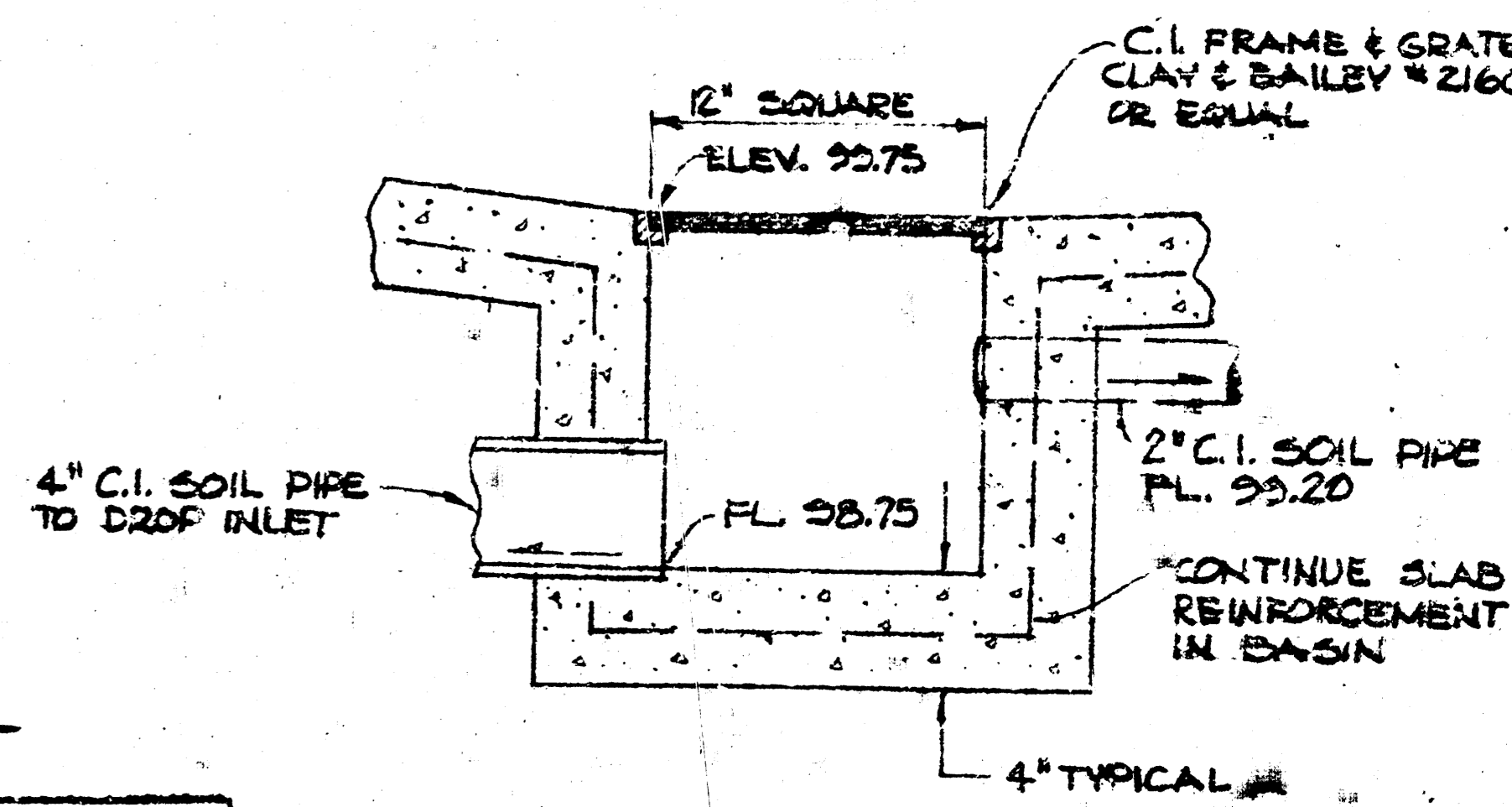
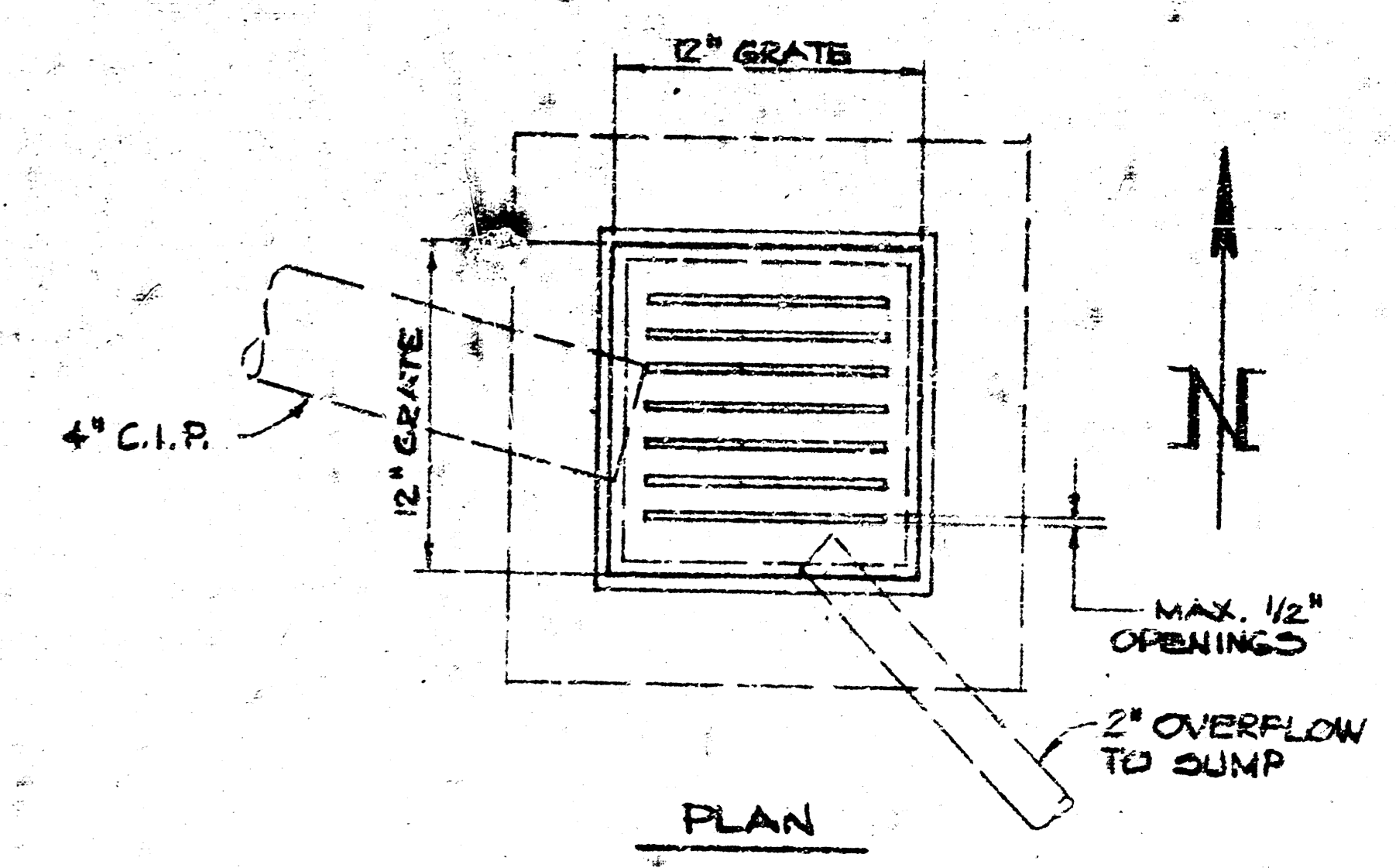
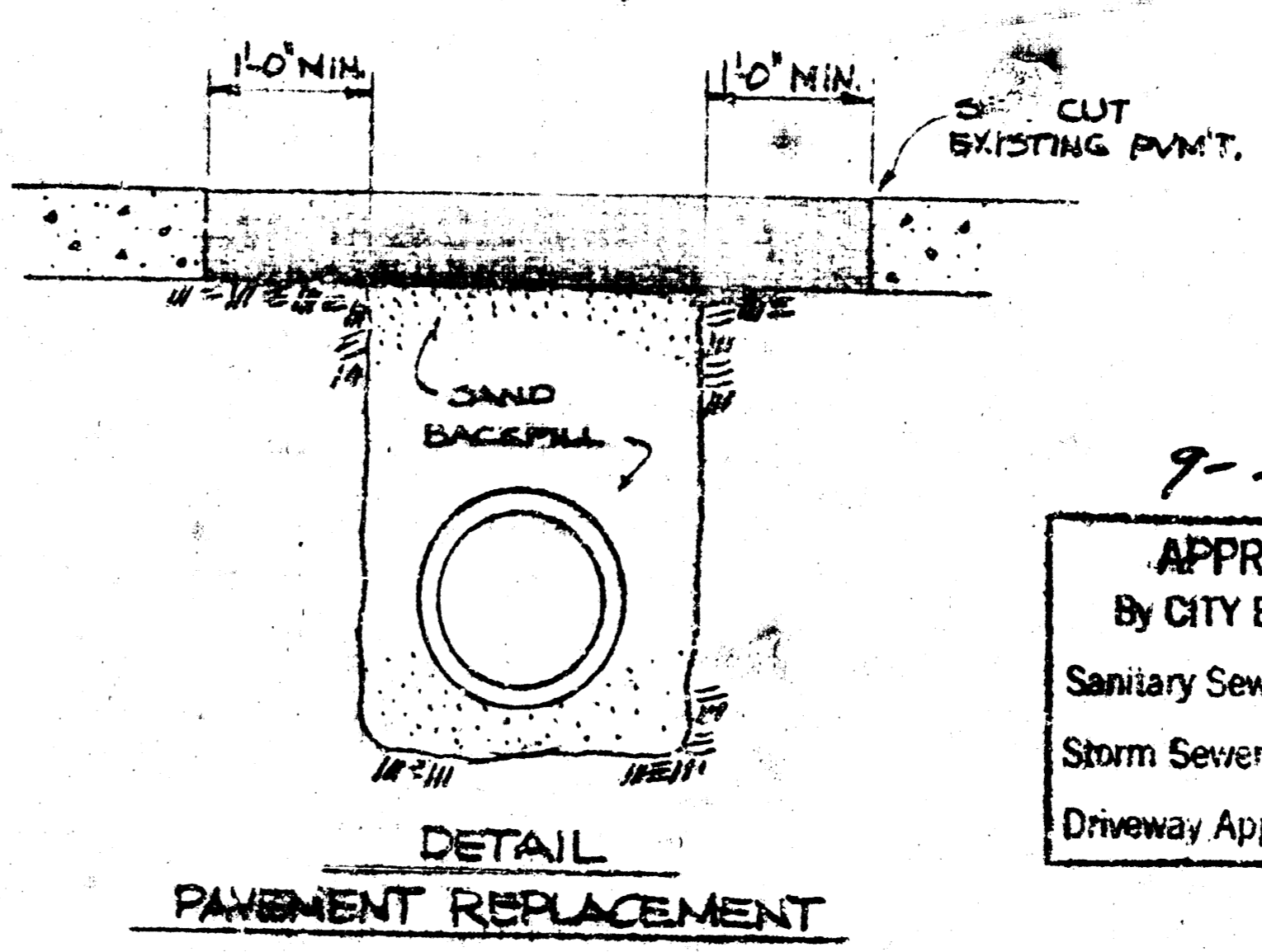


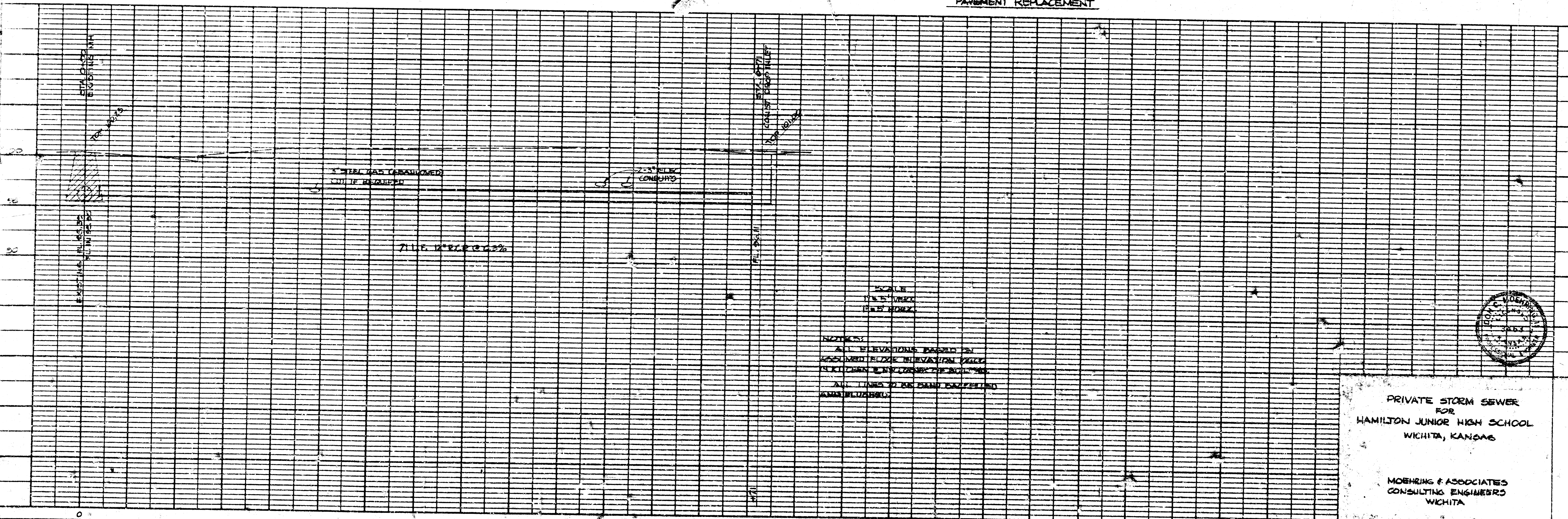
**NOTE TO CONTRACTOR**  
 This project will be constructed under the supervision of the CITY ENGINEER and conforming to the SPECIFICATIONS of the CITY OF WICHITA. The CONTRACTOR will reimburse the City of Wichita for all cost of ~~inspection~~ inspection.



9-24-75  
 APPROVED AS NOTED  
 By CITY ENGINEER OF WICHITA:  
 Sanitary Sewers \_\_\_\_\_  
 Storm Sewers D.E.S.  
 Driveway Approaches \_\_\_\_\_



N  
 1" = 5'



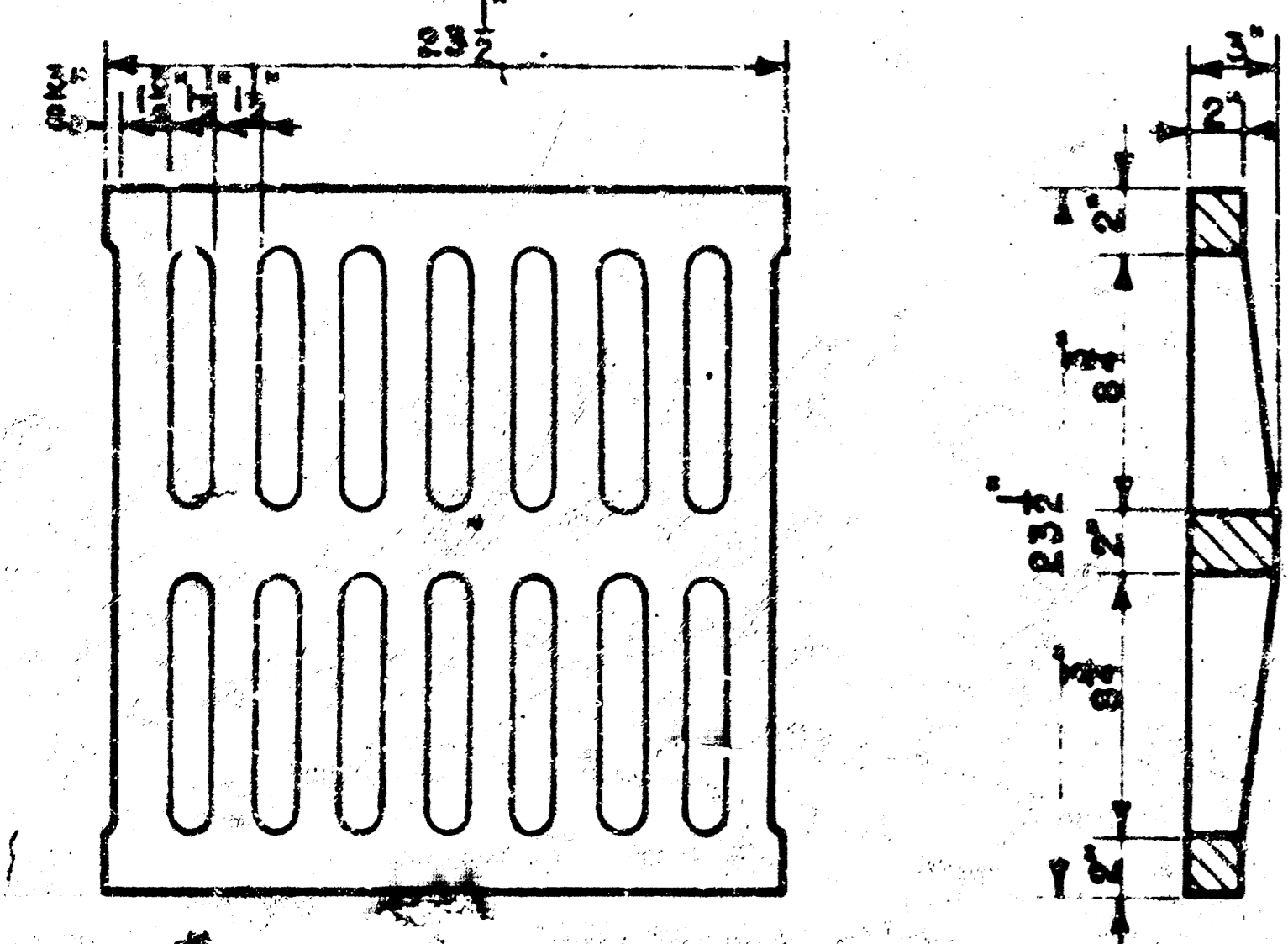
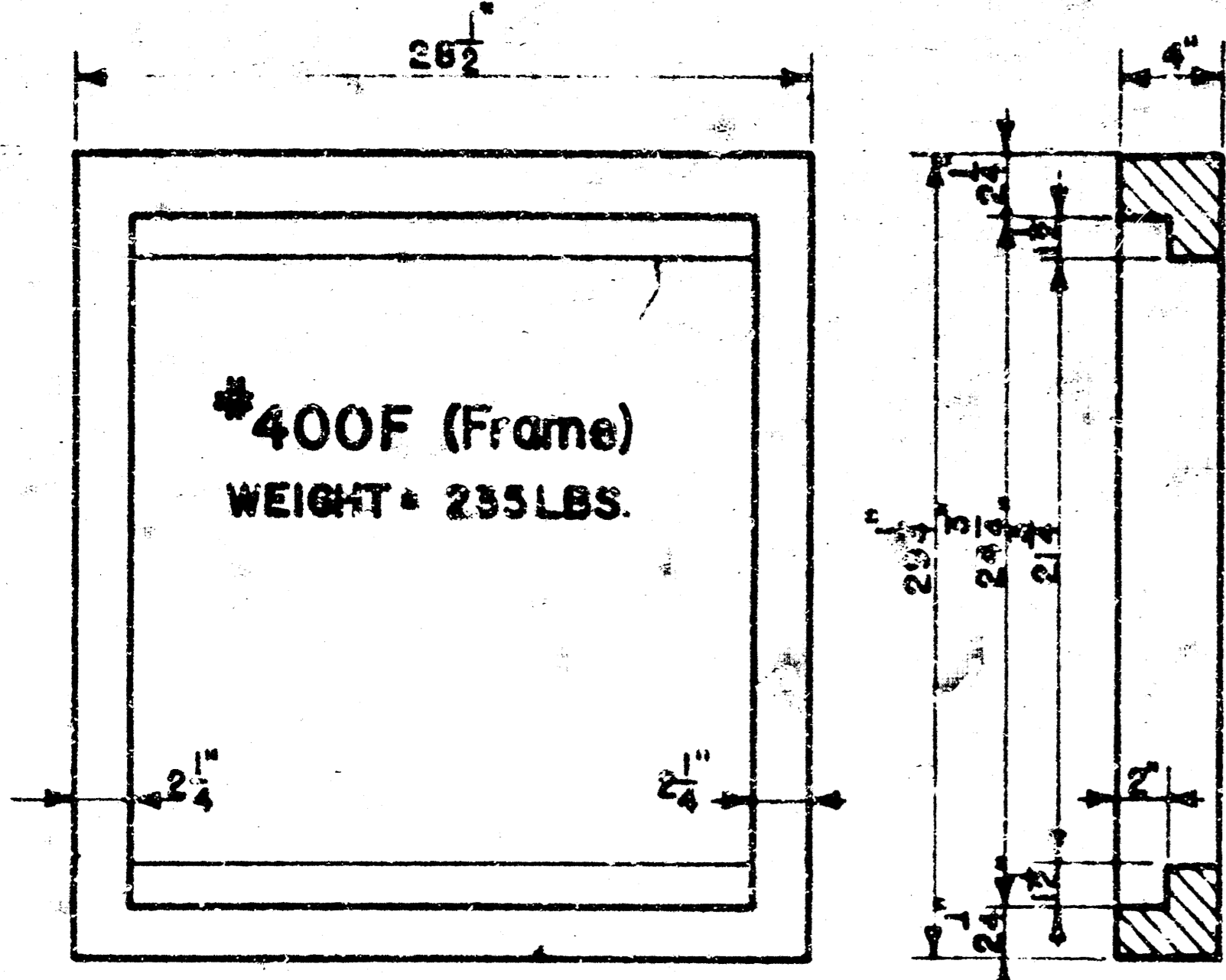
SCALE  
 1" = 5' VERT.  
 1" = 10' HORIZ.

NOTES:  
 ALL ELEVATIONS BASED ON ASSUMED FINISH ELEVATION 100.0. ALL LINES TO BE EXACTLY AS SHOWN.

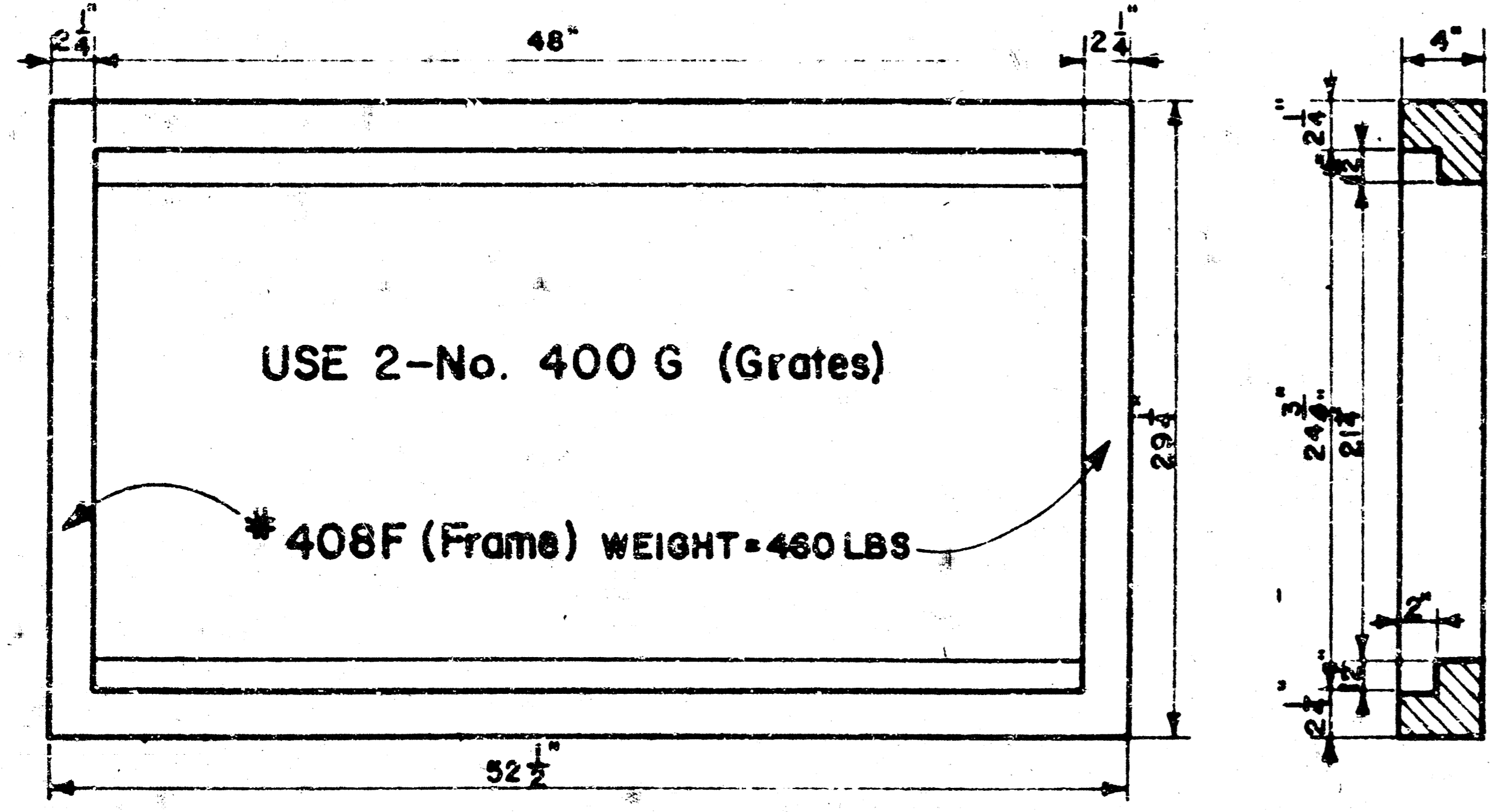


PRIVATE STORM SEWER  
 FOR  
 HAMILTON JUNIOR HIGH SCHOOL  
 WICHITA, KANSAS

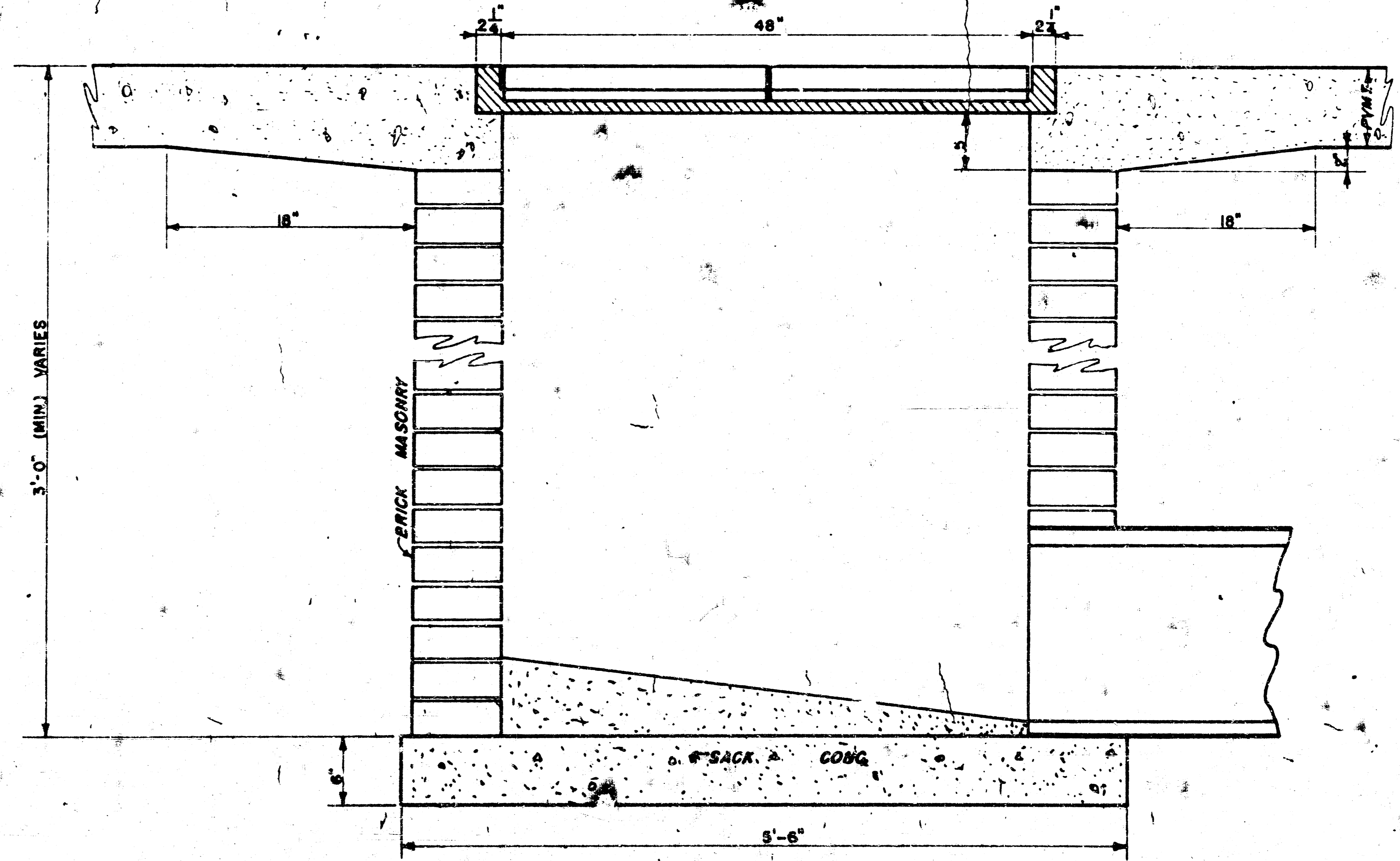
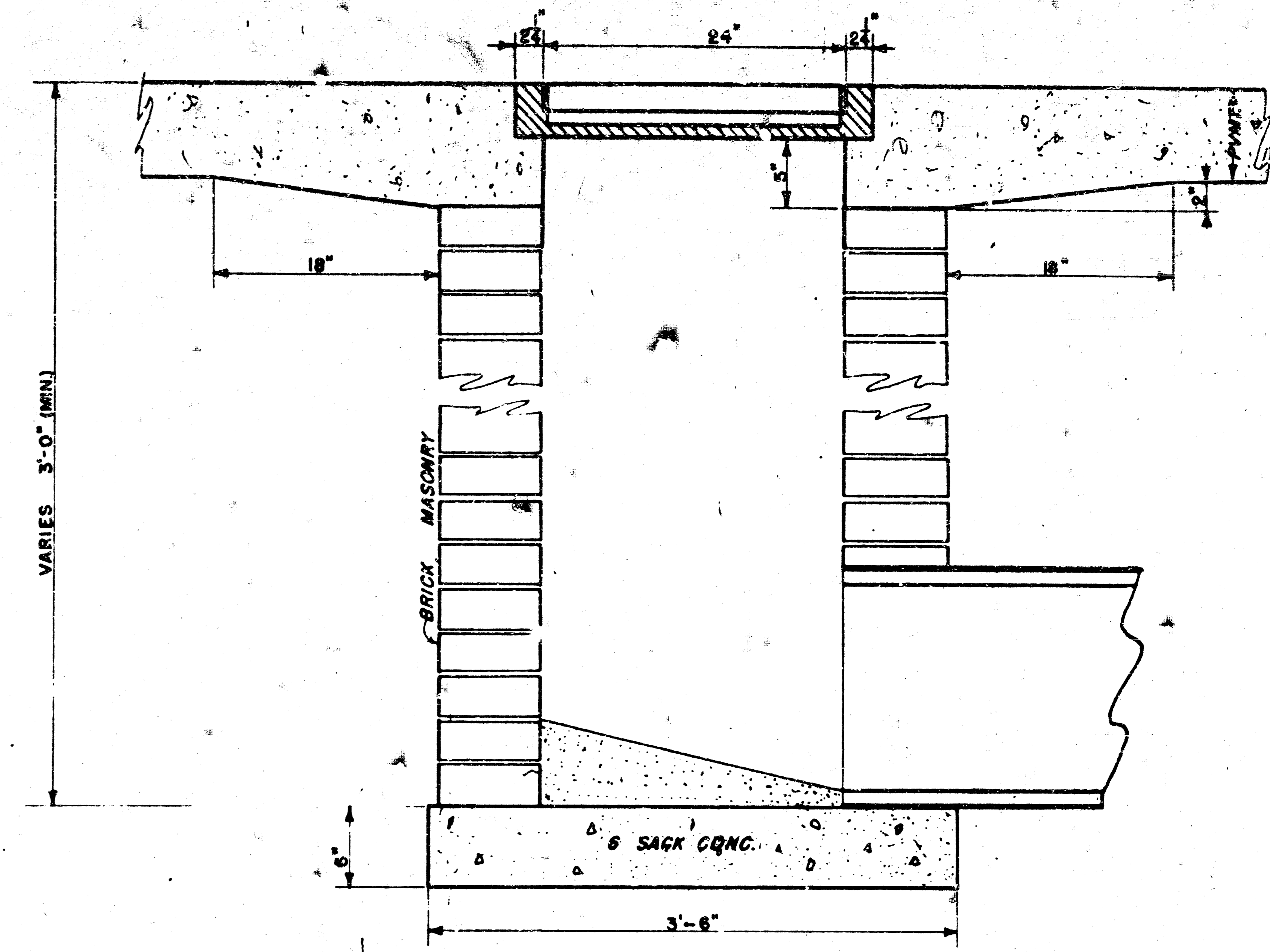
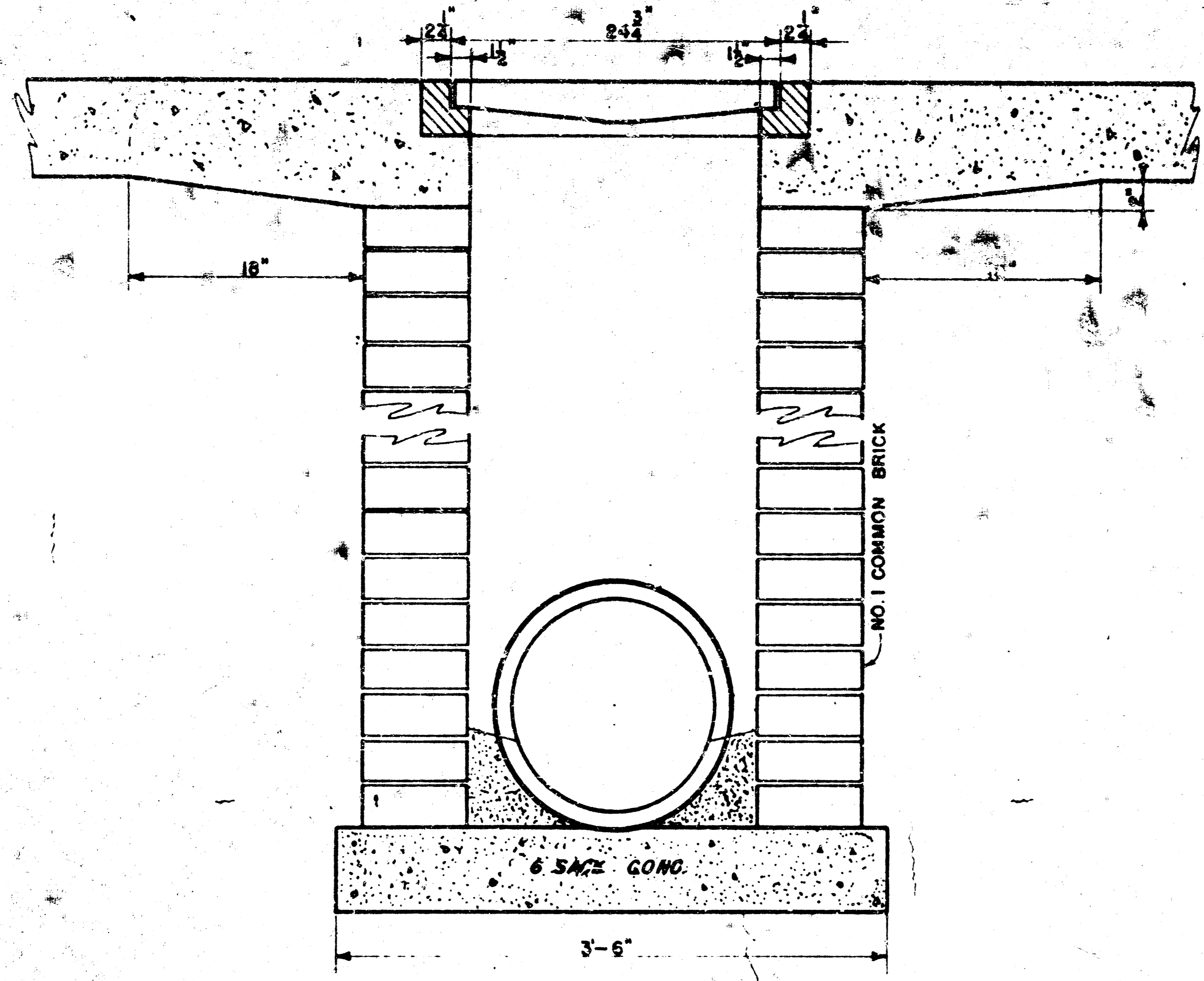
MOHRING & ASSOCIATES  
 CONSULTING ENGINEERS  
 WICHITA



24"x24" Frame & Grate Detail



Double 24"x24" Frame Detail



**DROP INLET**

R.W. Linn City E

City of Wichita,

Project

Project No.

Date:

Scale: 1-1/2" = 1'-0"