

GENERAL NOTES

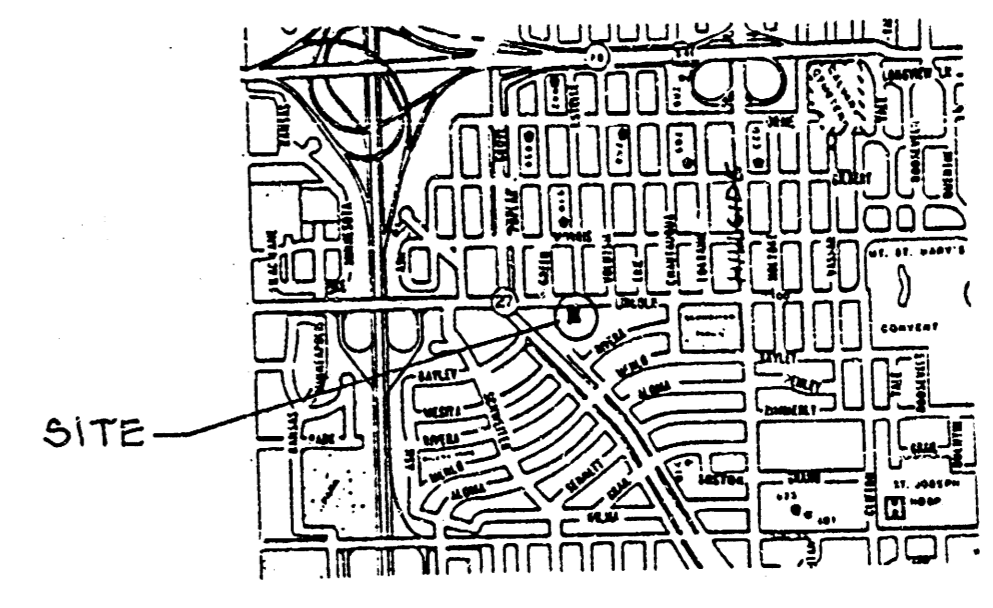
- This project is to be constructed in conformance with Standard Specifications for Storm Sewers of the City of Wichita (applies to Storm Sewer only).
- Contractor shall make arrangements for inspection of this project by a licensed Professional Engineer per City of Wichita requirements, prior to construction.
- Contractor shall verify location and depth of underground utilities prior to laying any pipe.

Remove & Replace Conc. Island as necessary for construction.

CAUTION: Underground Utilities
Southwestern Bell Telephone
Arkla Gas Company
Wichita Water Dept. (See note 3)

Sta. 0+88.9 Construct
Std. 2' x 2' Drop Inlet
Top elev. 103.25.96

Construct Concrete (w)
Valley Gutter per detail
(Narrow as nec. @ curb)



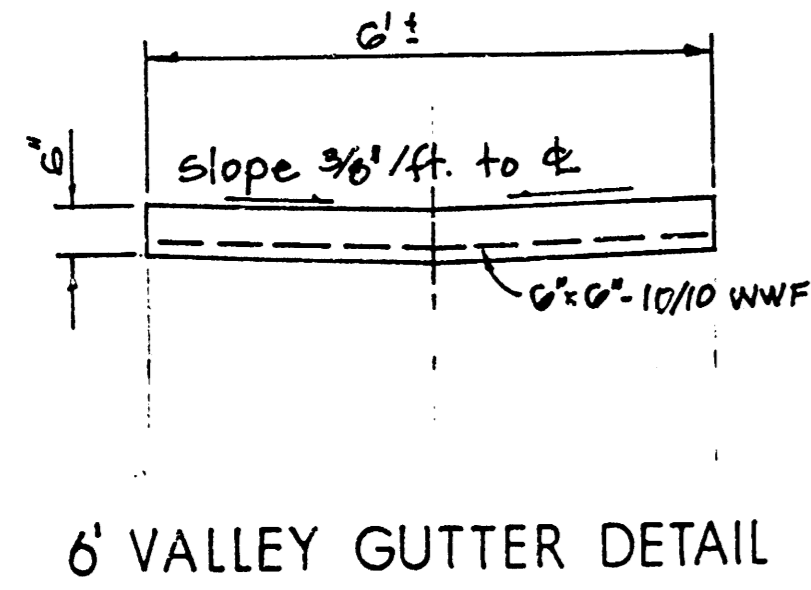
LOCATION MAP

NOTE TO CONTRACTOR

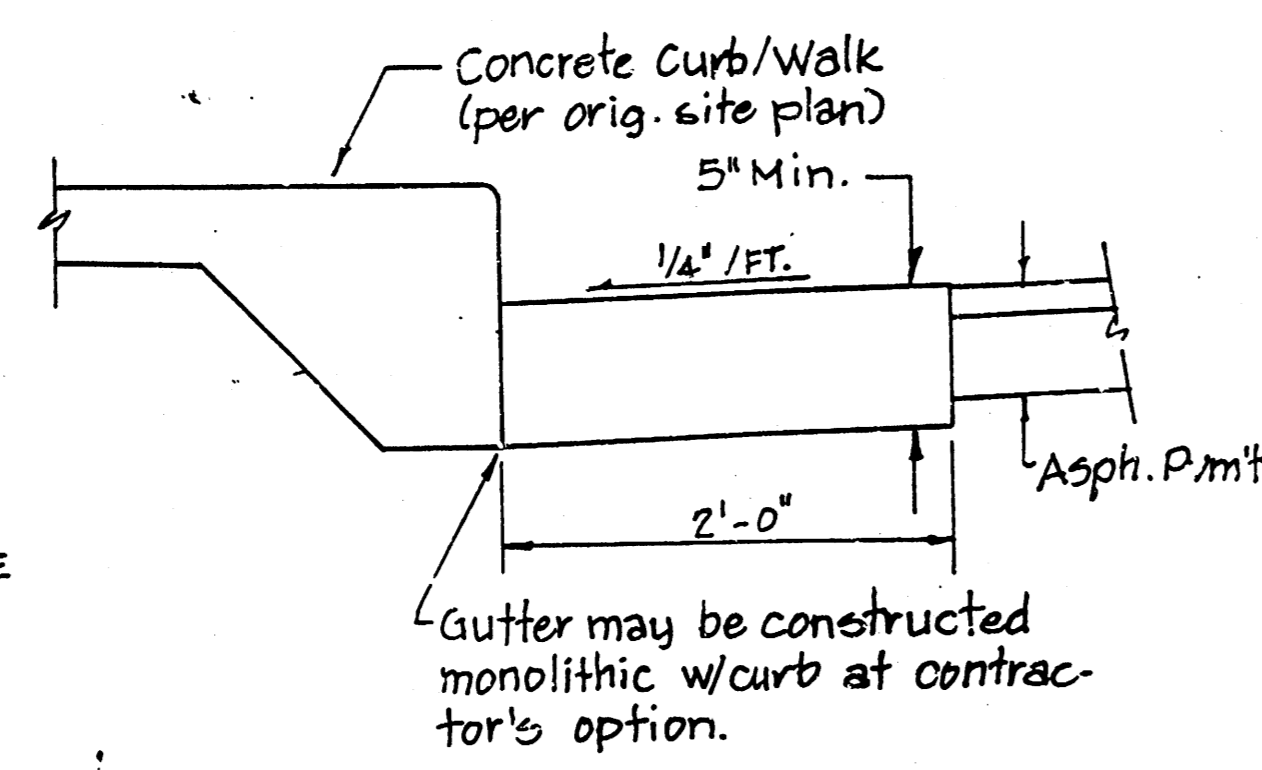
INSPECTION AND TESTING FOR THIS PROJECT IS TO BE PROVIDED BY A LICENSED CONSULTING ENGINEERING FIRM UNDER CONTRACT WITH THE CITY OF WICHITA. SAID INSPECTION TO BE LIMITED TO THE CITY OF WICHITA SPECIFICATIONS FOR CONSTRUCTION AND TO BE LIMITED TO THE CITY OF WICHITA SPECIFICATIONS FOR CONSTRUCTION. NO WORK SHALL BE PERFORMED UNLESS THE CITY ENGINEER OR THE PUBLIC RIGHT-OF-WAY INSPECTOR HAS APPROVED SUCH INSPECTION FOR SAID WORK. NO WORK SHALL BE CONSIDERED IN DEDICATED EASEMENTS OR PUBLIC RIGHT-OF-WAY WITHOUT WRITTEN AUTHORIZATION BY THE CITY ENGINEER.

By CITY ENGINEER OF WICHITA

Storm Sewer: VRH 12/21/88
 Existing Approaches: _____
 Water Mains: _____
 Other: _____



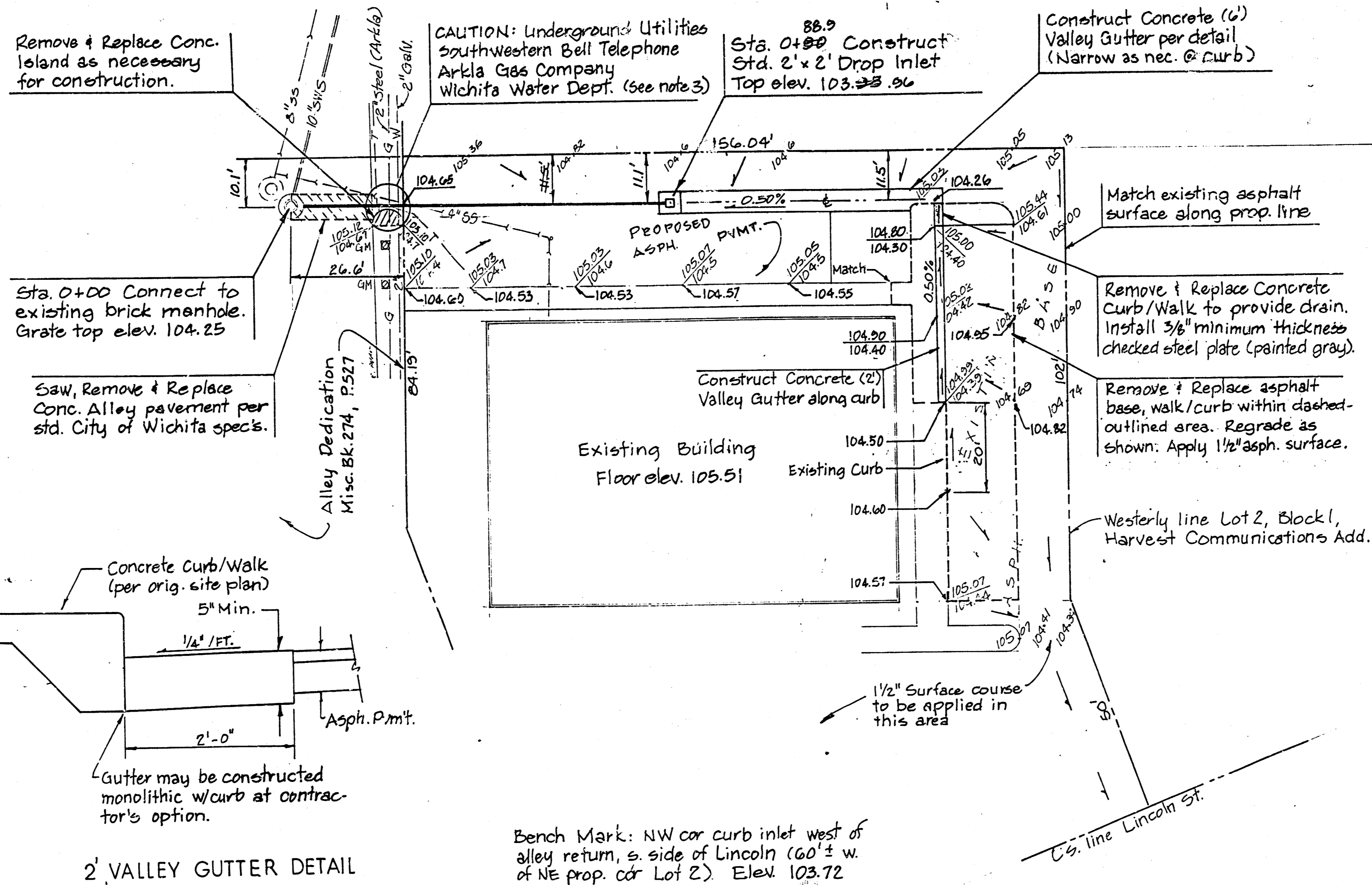
6' VALLEY GUTTER DETAIL



2' VALLEY GUTTER DETAIL

ASPHALT PAVEMENT ELEVATION NOTE

- 104.00 Top of Curb elev. (existing)
 - Existing Asphalt Base elev.
 - 104.50 Proposed Top of Curb/Walk elev.
 - Proposed Asphalt surface elev.
 - 104.50 Proposed Asphalt surface only elev.
- Direction of Surface Drainage

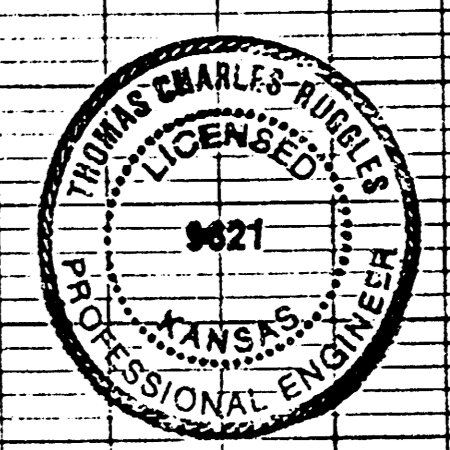
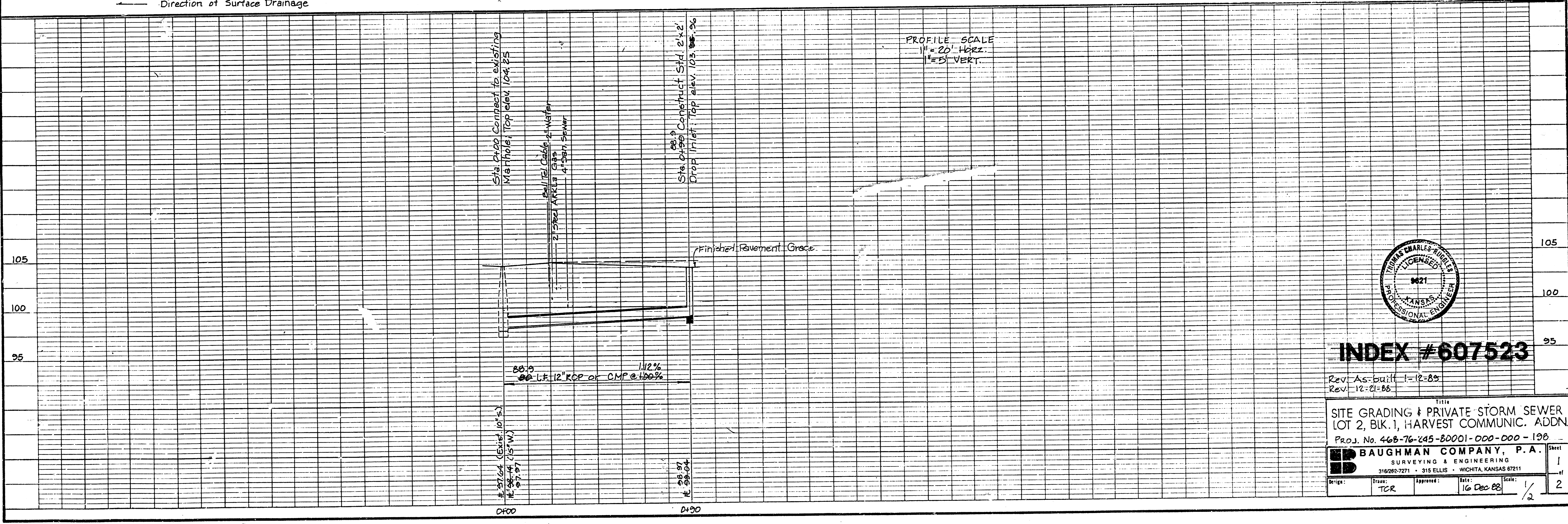


Bench Mark: NW cor curb inlet west of alley return, s. side of Lincoln (60'± w. of NE prop. cor Lot 2) Elev. 103.72

N
1" = 20'

DATE	
BY	
REVISION	
NO. 1	
NO. 2	
NO. 3	
NO. 4	
NO. 5	
NO. 6	
NO. 7	
NO. 8	
NO. 9	
NO. 10	

DATE	
BY	
REVISION	
NO. 1	
NO. 2	
NO. 3	
NO. 4	
NO. 5	
NO. 6	
NO. 7	
NO. 8	
NO. 9	
NO. 10	



INDEX #607523

Rev. As-built 1-12-89
 Rev. 12-21-88

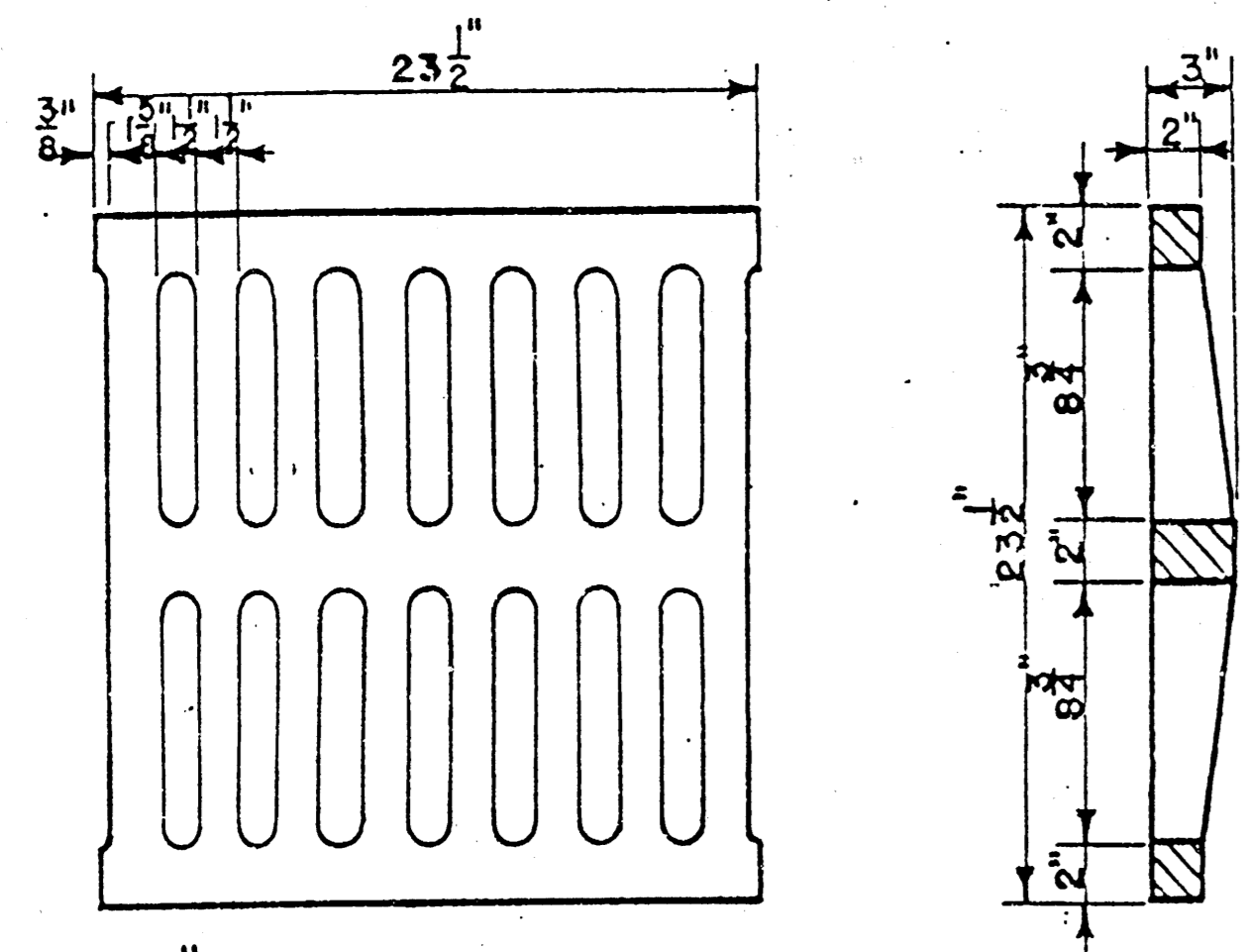
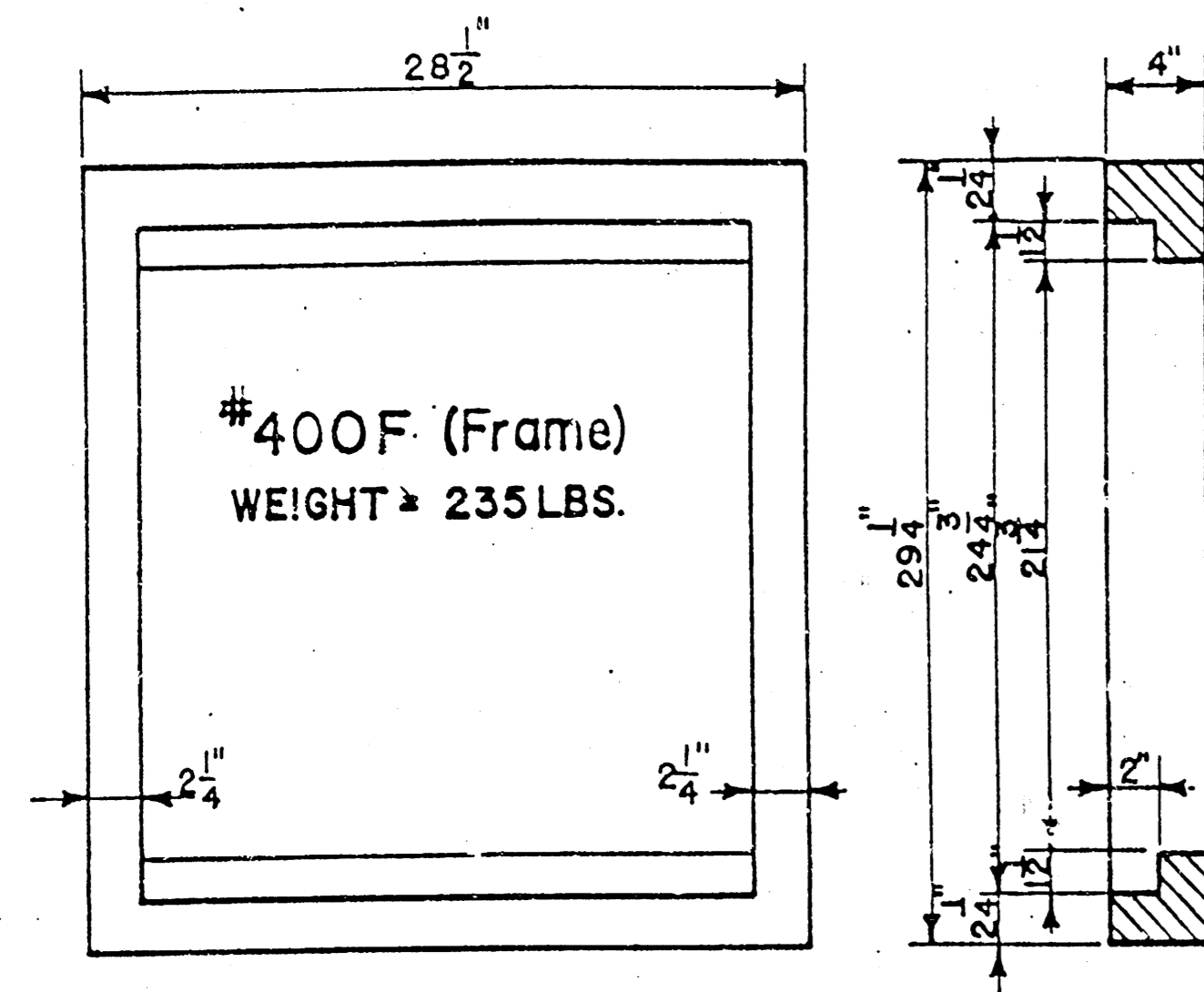
TITLE
 SITE GRADING & PRIVATE STORM SEWER
 LOT 2, BK. 1, HARVEST COMMUNIC. ADDN.
 Proj. No. 468-76-245-80001-000-000-198

BAUGHMAN COMPANY, P.A.
 SURVEYING & ENGINEERING
 316262-7271 • 315 ELLIS • WICHITA, KANSAS 67211

Scale: 1/2" = 20'
 Date: 16 Dec 88
 Sheet: 1 of 2

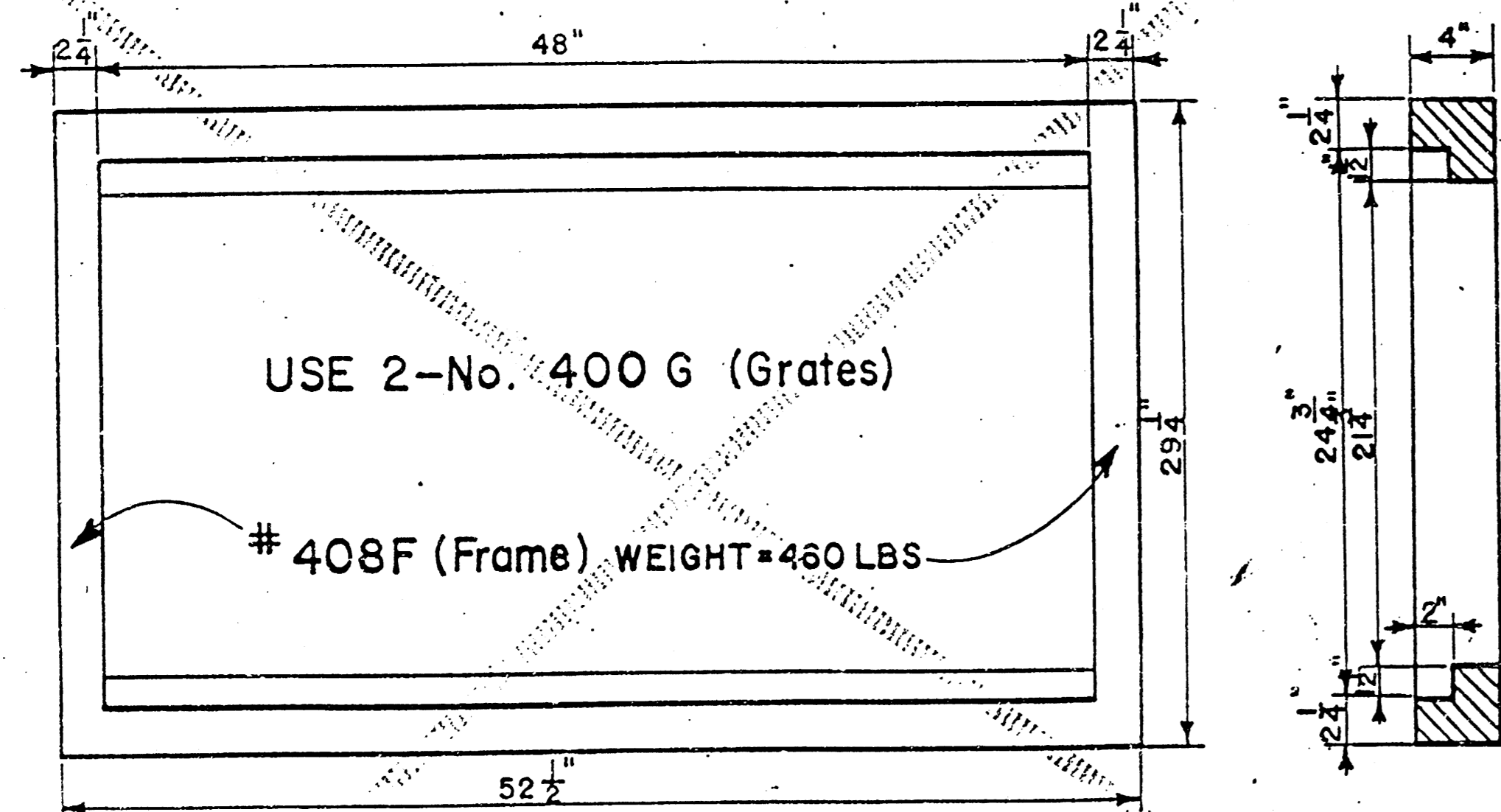
FILMED FROM THE BEST AVAILABLE COPY

NOTE: Grates shall be imprinted on the top surface with "CITY OF WICHITA" using letters at least 1" in height. Other marking methods may be used only if approved by the engineer.

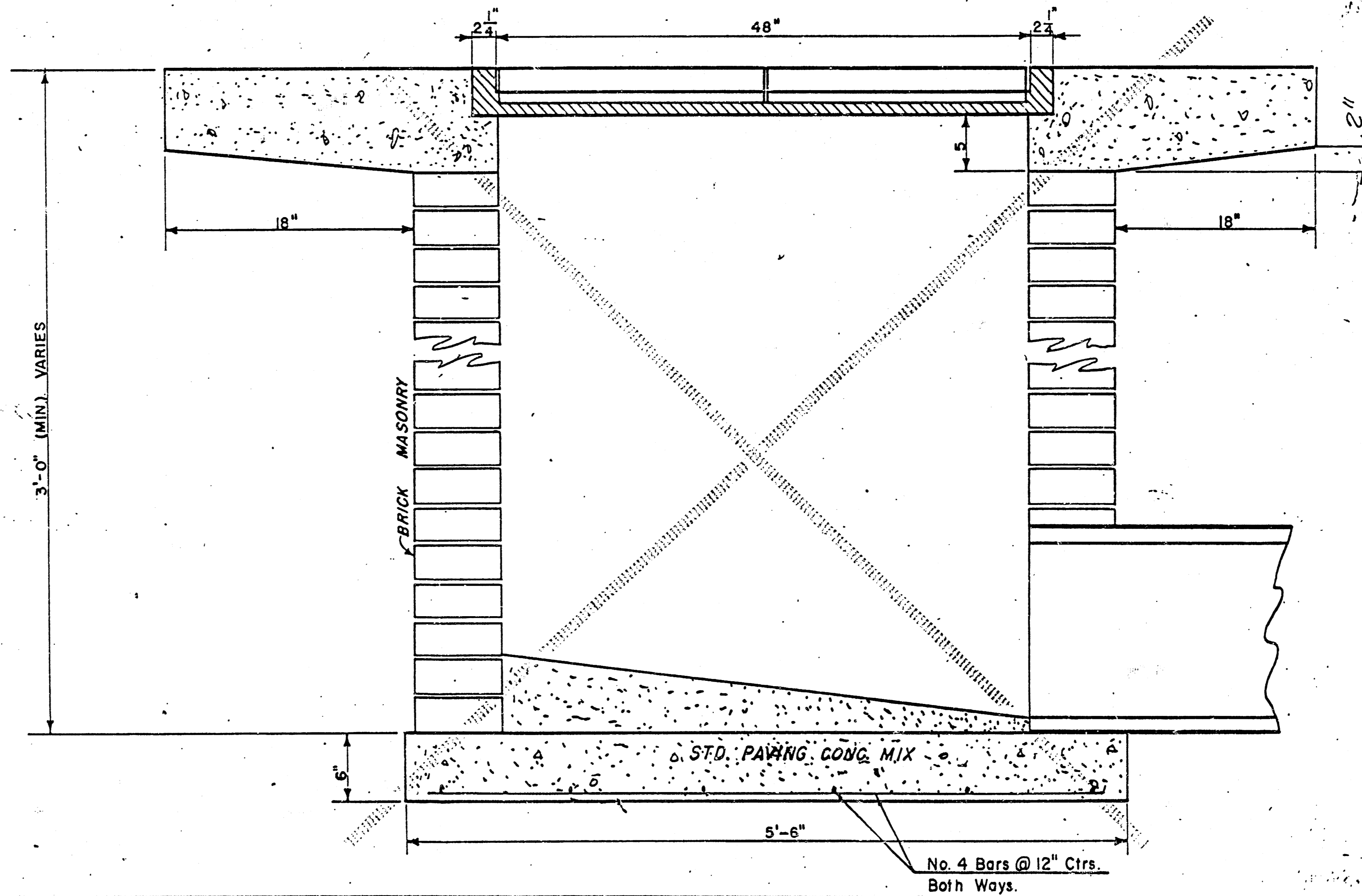
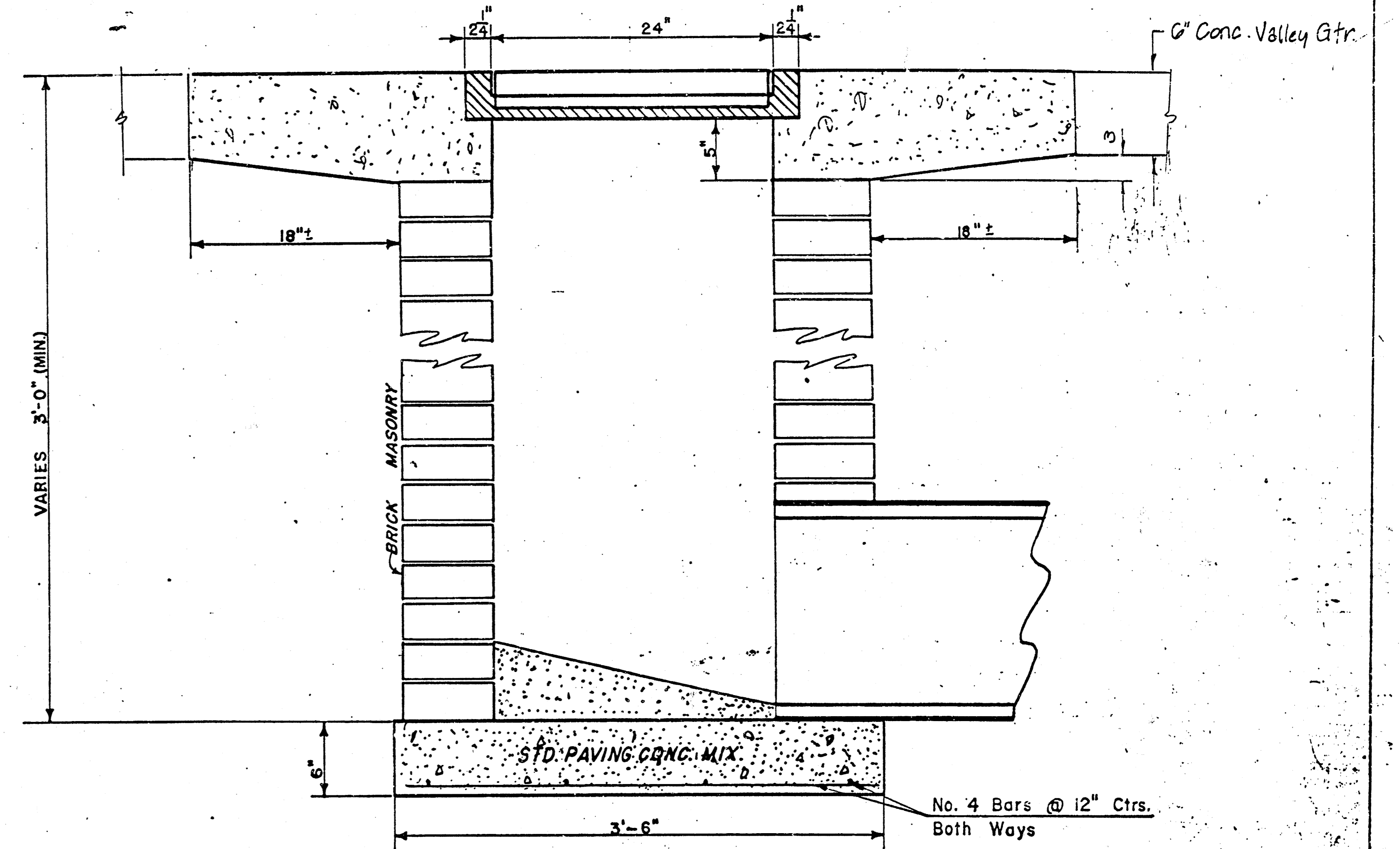
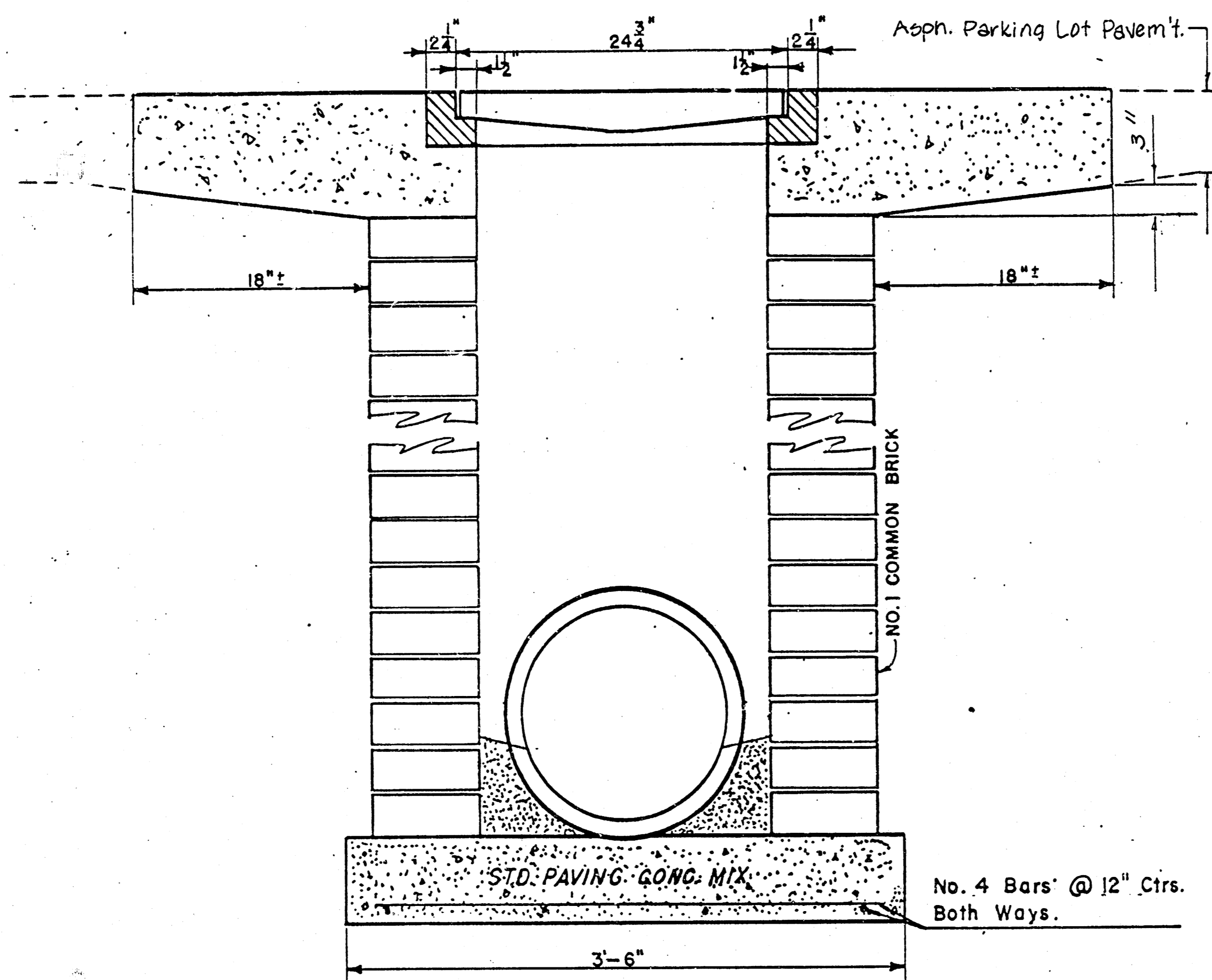


#400G (Grate)
WEIGHT = 235 LBS

24"x24" Frame & Grate Detail



Double 24"x24" Frame Detail



DROP INLET DETAILS

M.E. Lindebak, City Engineer
City of Wichita, Kansas
Project
Project No. 472-76-245

Sheet
2
of
2

FILMED FROM THE BEST AVAILABLE COPY.....