


STORM WATER SEWER FOR HI-TECH INDUSTRIAL PARK SECOND PRIVATE PROJECT NO. 448-76-245-80001-000-000-131

CITY OF WICHITA, KANSAS
MICHAEL E. LINDEBAK, CITY ENGINEER

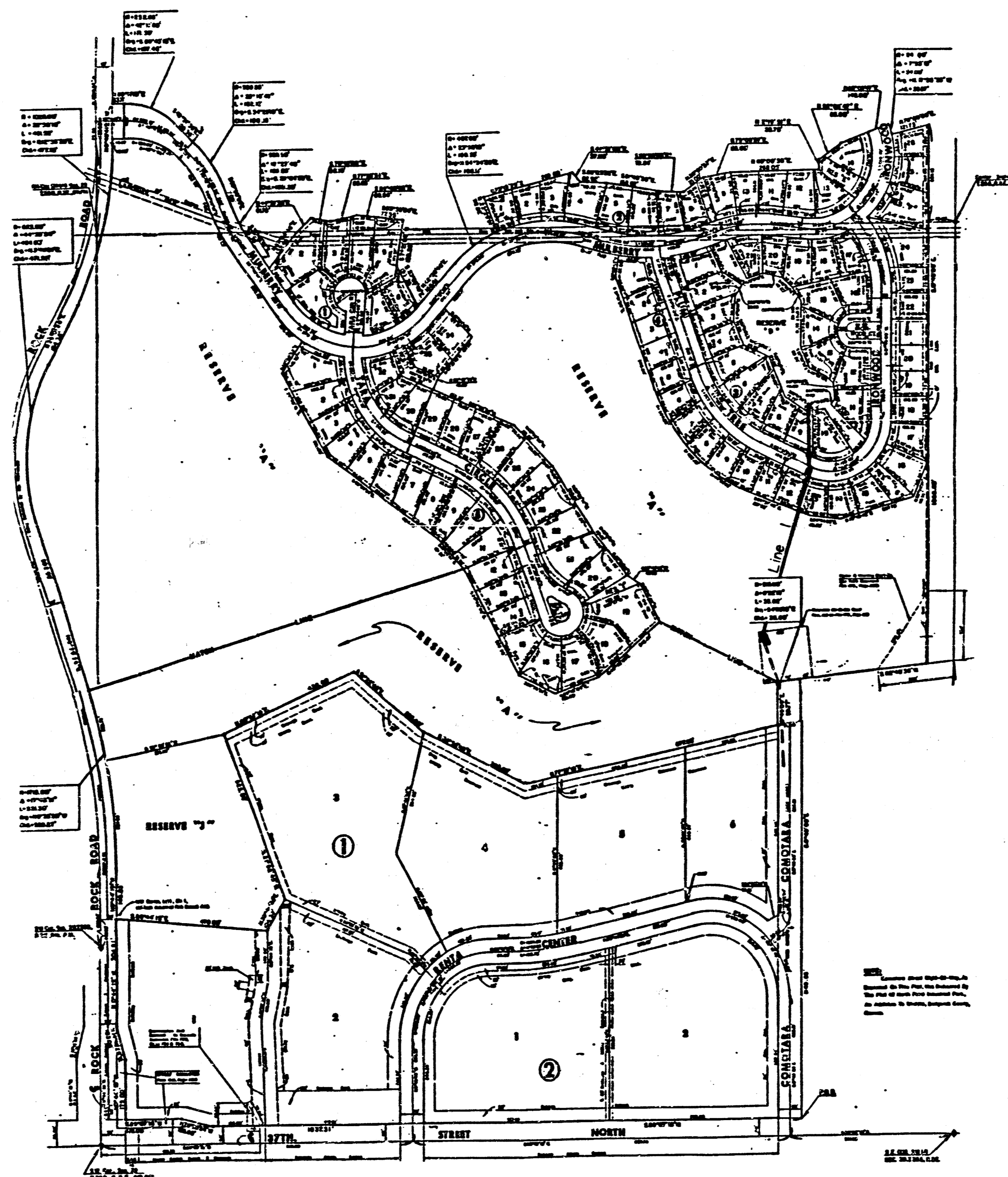
GENERAL NOTES

1. THE CONTRACTOR SHALL BE RESPONSIBLE FOR PRESERVING PROPERTY IRONS. THE CONTRACTOR SHALL BE REQUIRED TO RE-ESTABLISH ANY PROPERTY IRONS WHICH ARE DAMAGED OR DESTROYED BY HIS CONSTRUCTION OPERATIONS. SUCH IRONS SHALL BE RE-ESTABLISHED BY A LICENSED LAND SURVEYOR OR A LICENSED PROFESSIONAL ENGINEER IN ACCORDANCE WITH STATE LAWS.
2. TREES TO BE REMOVED ARE MARKED . ALL TREES WHICH IN THE OPINION OF THE FIELD ENGINEER CAN BE SAVED, SHALL BE SAVED.
3. CONTRACTOR SHALL NOTIFY THE FOLLOWING COMPANIES PRIOR TO ANY EXCAVATION:

ARKLA GAS COMPANY	942-8350
BELL TELEPHONE COMPANY	268-2256
CABLEVISION	269-3340
KP&L COMPANY	263-7511
KANSAS GAS & ELECTRIC	261-6248
KANSAS ONE-CALL	1-800-344-7233
4. EXISTING UTILITIES AND THEIR LOCATIONS, AS SHOWN ON THE PLANS, REPRESENT THE BEST INFORMATION OBTAINABLE FOR DESIGN. LOCATION INFORMATION HAS BEEN OBTAINED FROM THE VARIOUS UTILITY COMPANIES AND IS EITHER FROM COMPANY RECORD DRAWINGS OR COMPANY PROVIDED FIELD LOCATIONS. THE PLAN LOCATIONS SHOWN ARE NOT GUARANTEED. ADDITIONAL EXISTING UTILITIES MAY ALSO BE ENCOUNTERED.
5. EXCAVATION SHALL REMAIN ON SITE. CONTRACTOR SHALL NOTIFY THE OWNER 24 HOURS PRIOR TO CONSTRUCTION TO OBTAIN THE LOCATION TO PLACE EXCESS MATERIAL. SPREADING OF THE EXCESS MATERIAL SHALL BE SUBSIDIARY TO THIS PROJECT.

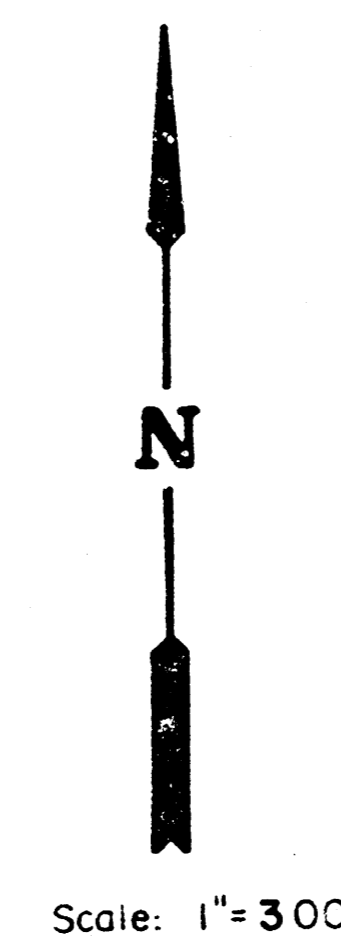
BENCH MARKS

- | | |
|---------|---|
| B.M. #1 | " " CUT ON NW CORNER RCB ± 900' S OF CENTER SECTION 29-26-2E.
ELEV. = 211.80 |
| B.M. #2 | CITY STANDARD 44' S & 48' W OF CENTERLINE OF 37TH & ROCK ROAD.
ELEV. = 204.11 |
| B.M. #3 | CITY STANDARD 32' S & 11' E OF S QUARTER CORNER SECTION 29-26-2E.
ELEV. = 224.64 |
| B.M. #4 | TBM RR-SPK IN S FACE OF CORNER FENCE POST ± 50' E OF W QUARTER CORNER SECTION 29-26-2E.
ELEV. = 189.79 |



INDEX TO DRAWINGS

SHEET NO.	DESCRIPTION
1	TITLE SHEET
2	PLAN LINE 1
3	PLAN LINE 1 & DETAILS
4	REINFORCED CONCRETE MANHOLES DETAILS
5	S.W.S. DETAILS

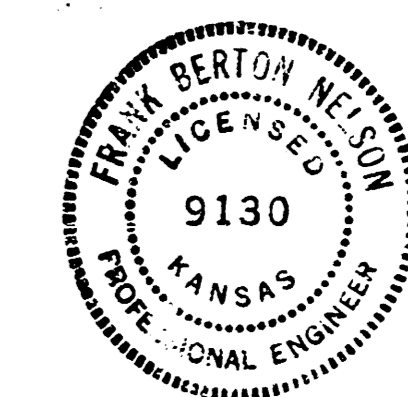


NOTE TO CONTRACTOR

This project will be constructed under the supervision of the CITY ENGINEER and conforming to the SPECIFICATIONS of the CITY OF WICHITA. The CONTRACTOR will pay the City of Wichita for all costs of plan review, inspection and booking per contract.

APPROVED AS NOTED
By CITY ENGINEER OF WICHITA

Sanitary _____
Storm Sewer URH 6/17/86
Triveway Approaches _____
Water Mains _____

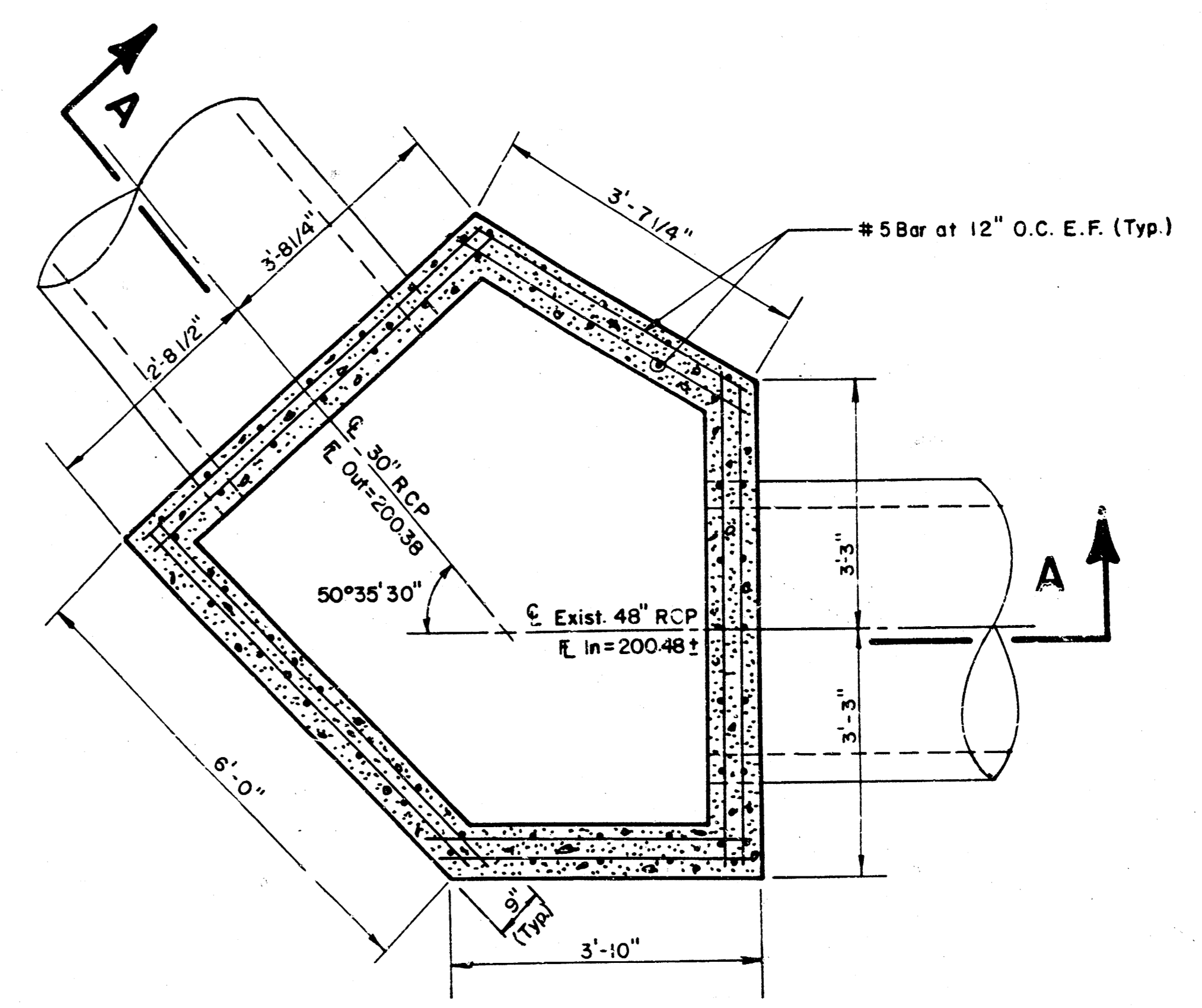
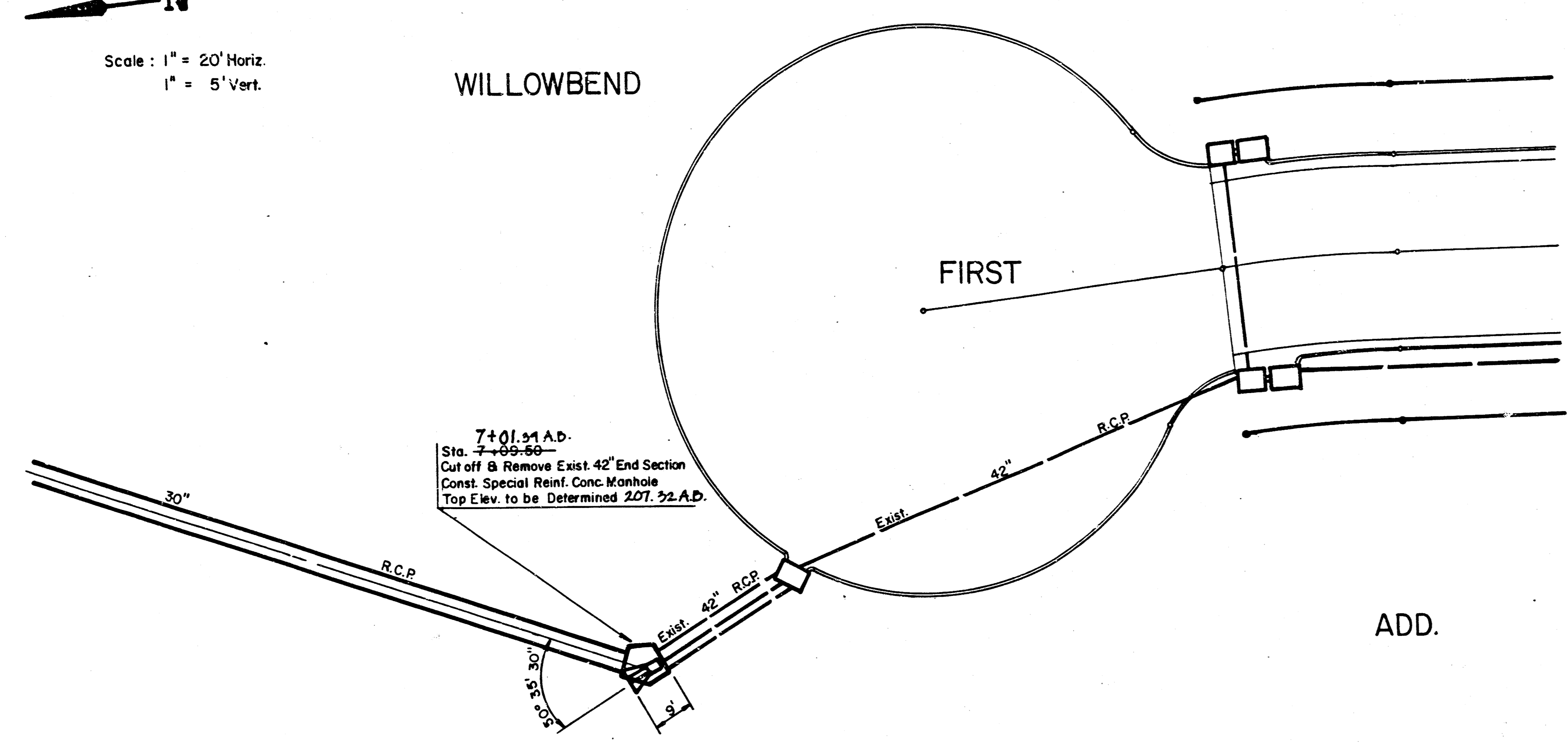


AS BUILT - NOV. 1988

	HI-TECH INDUSTRIAL PARK SECOND ADD. STORM WATER SEWER PLANS	F.B.N. K.H.B. JUNE 1986
	WICHITA ENGINEERING CONSULTANTS, P.A. 1001 W. 17TH ST., SUITE 100 WICHITA, KANSAS 67202 502-856-1111	1 5

FILMED FROM THE BEST
AVAILABLE COPY

N
Scale: 1" = 20' Horiz.
1" = 5' Vert.

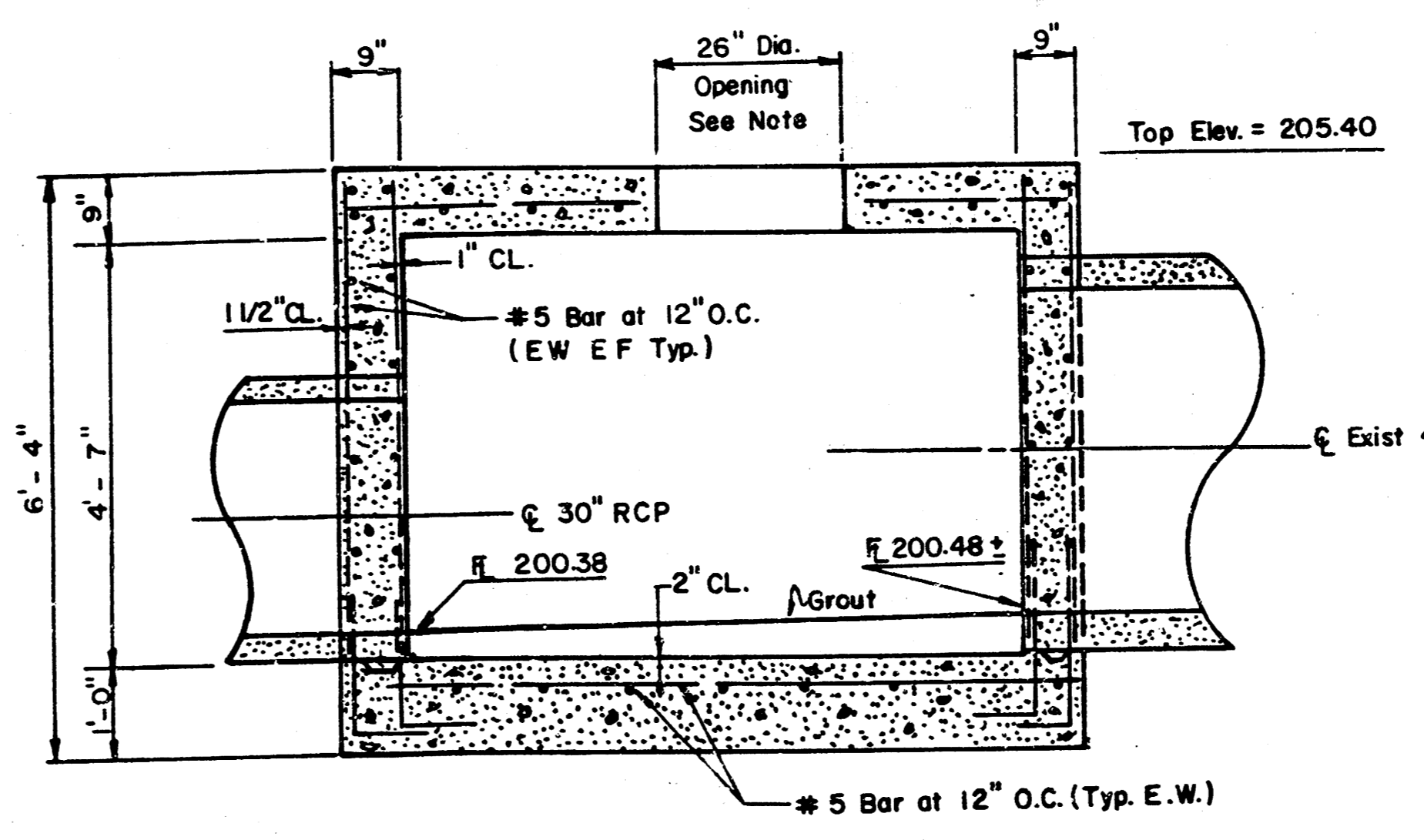
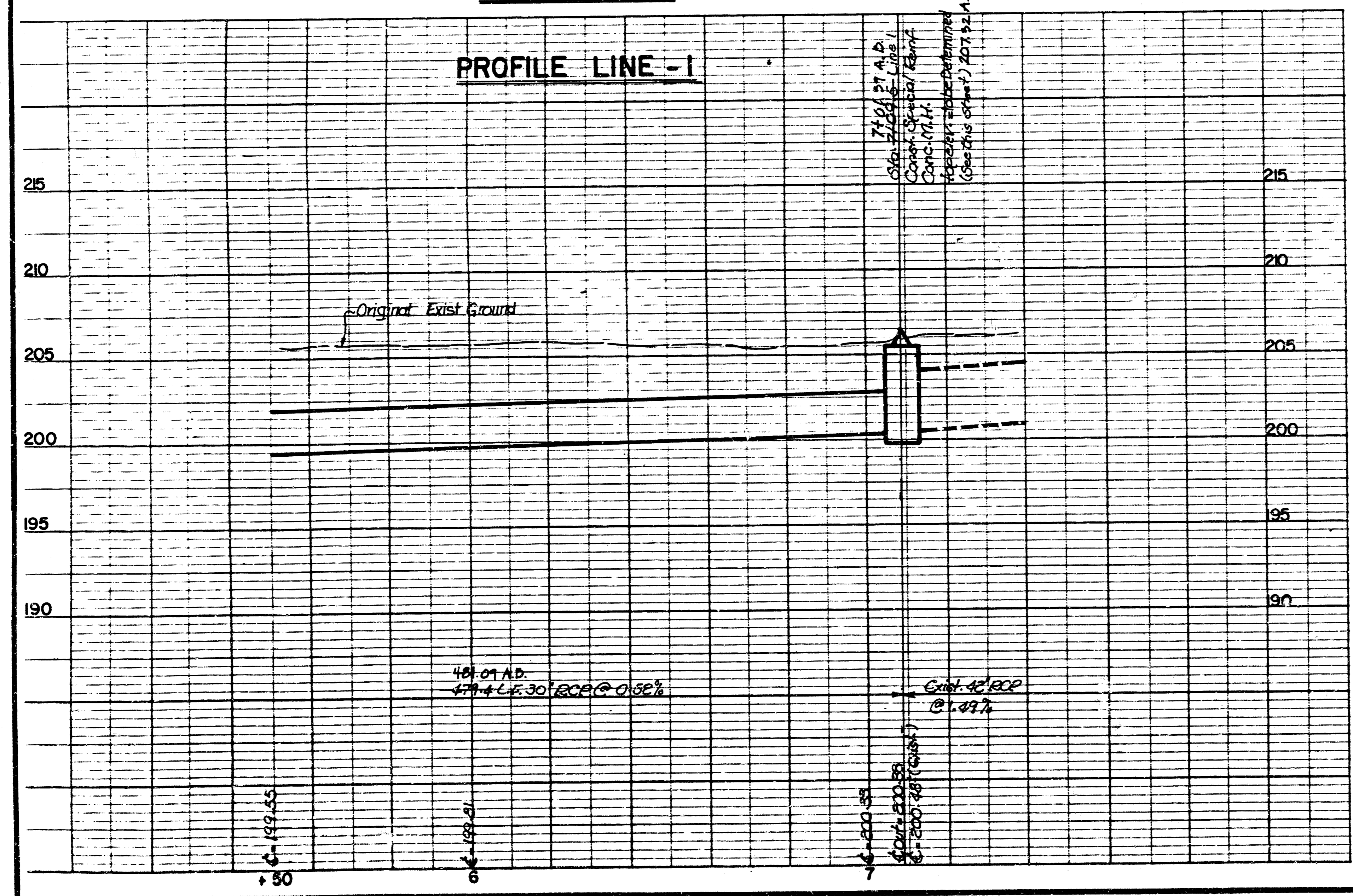


PLAN VIEW
No Scale

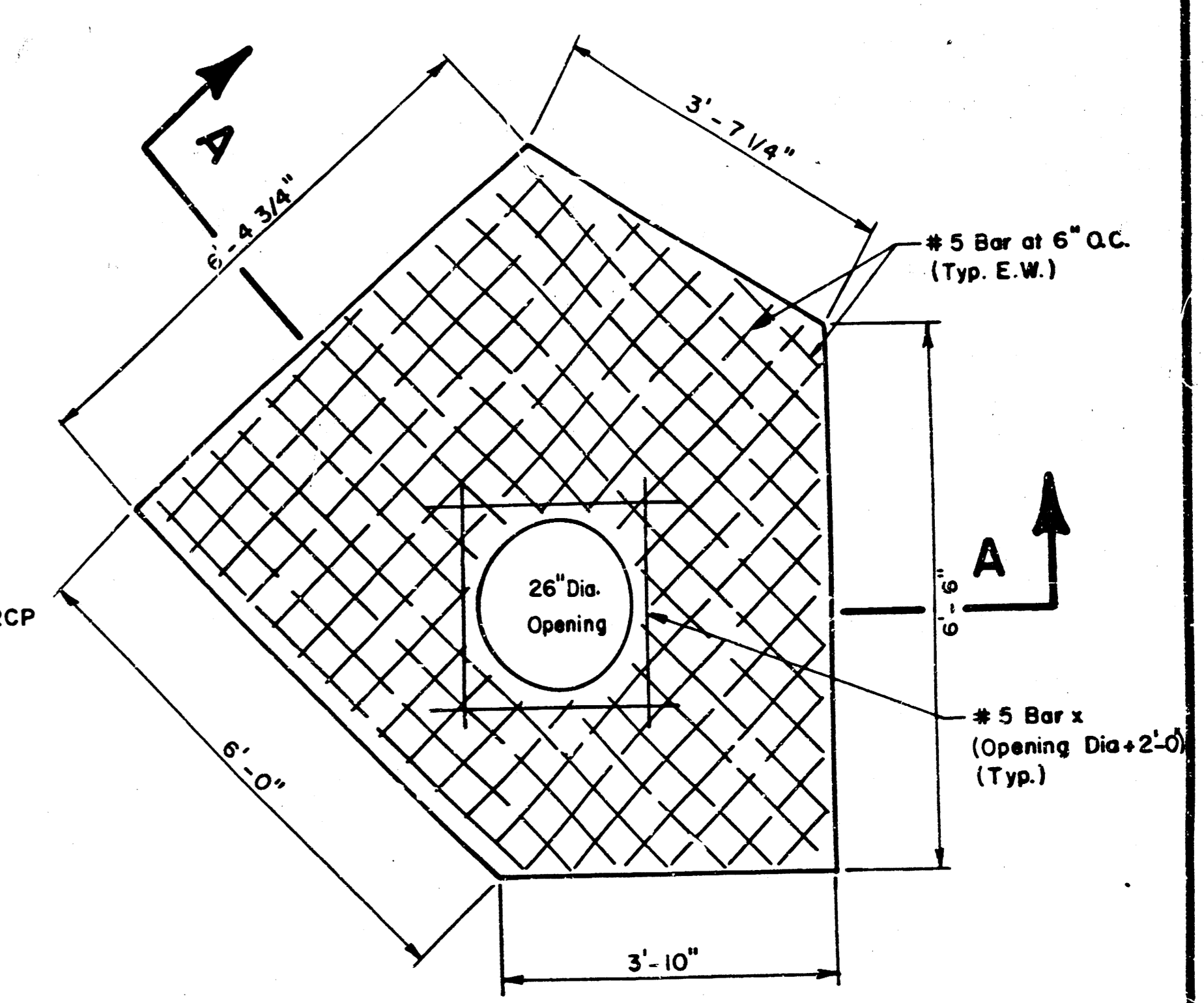
ADD.

NOTE: SEE SHEET 4 FOR REQUIRED BRICK STACK AND C.O.W. STD. M.H. RING & COVER. TOP ELEV. OF RING & COVER SHALL BE SET IN FIELD BASED ON ACTUAL GROUND SURFACE.
REINFORCING SHALL BE CUT AS REQUIRED TO CLEAR R.C.P.
See Sheet 4 For Typical Reinf. around R.C.P.'s.

PLAN LINE - I
PROFILE LINE - I



SECTION A - A
No Scale



TOP SLAB PLAN
No Scale

AS BUILT - NOV. 1988

3/3
MKEC

FILMED FROM THE BEST AVAILABLE COPY