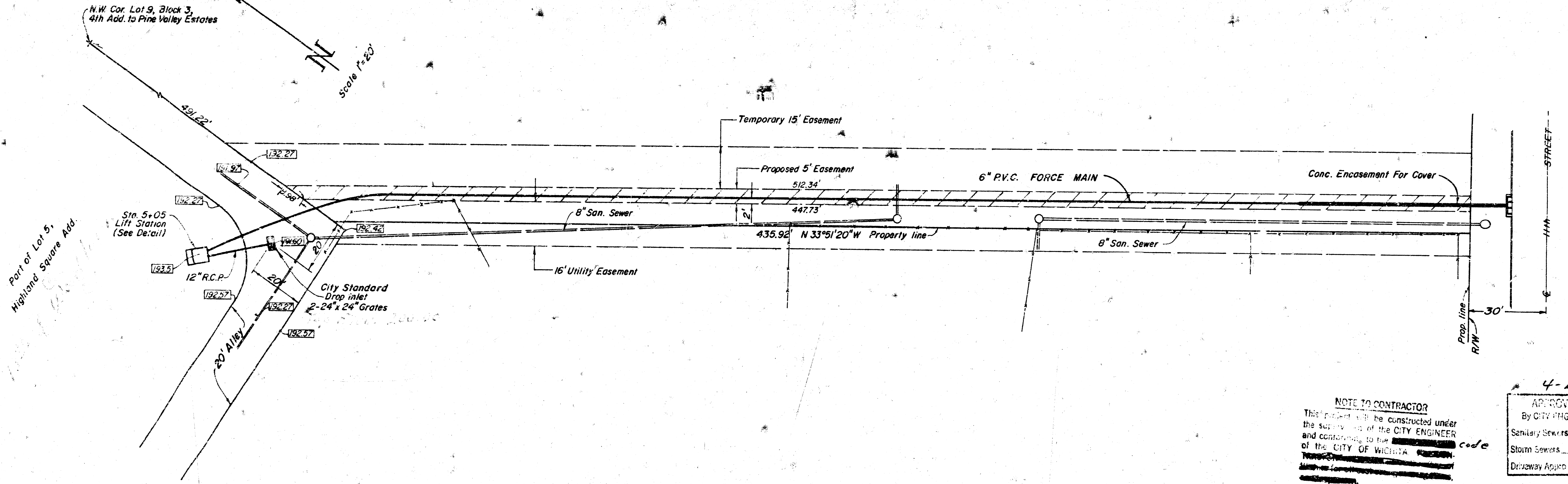


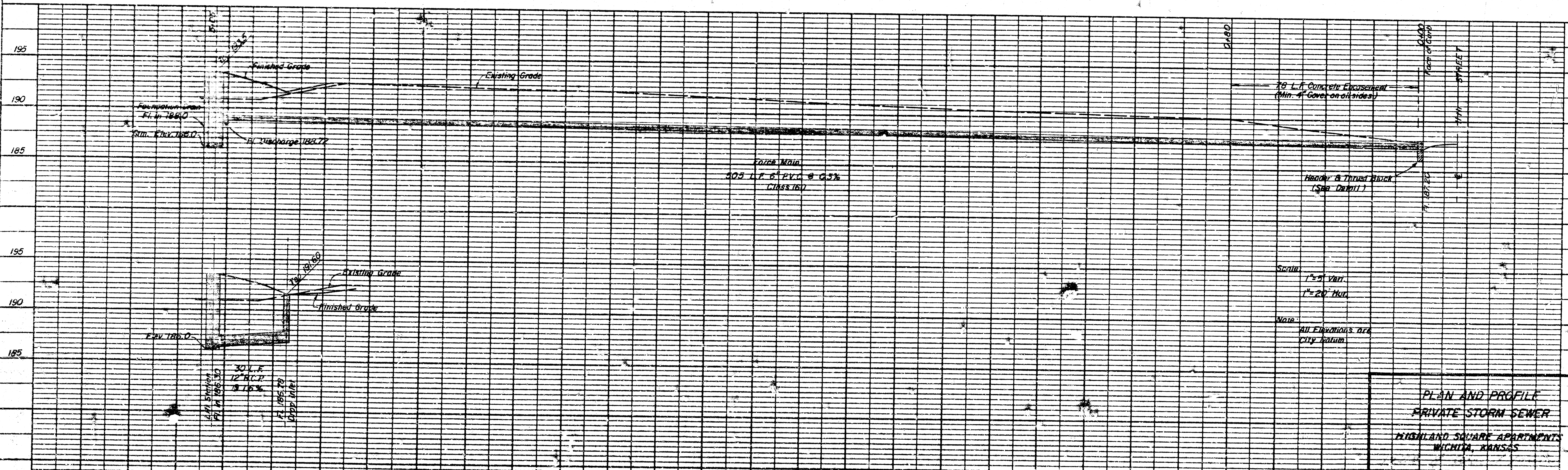
Catholic Diocese of Wichita, Owner  
 Lot 2, Block 3, 4th Add. to  
 Pine Valley Estates

BM. 191.75 spike west side Transformer Pole  
 at intersection of N.S. & E.W. Alleys

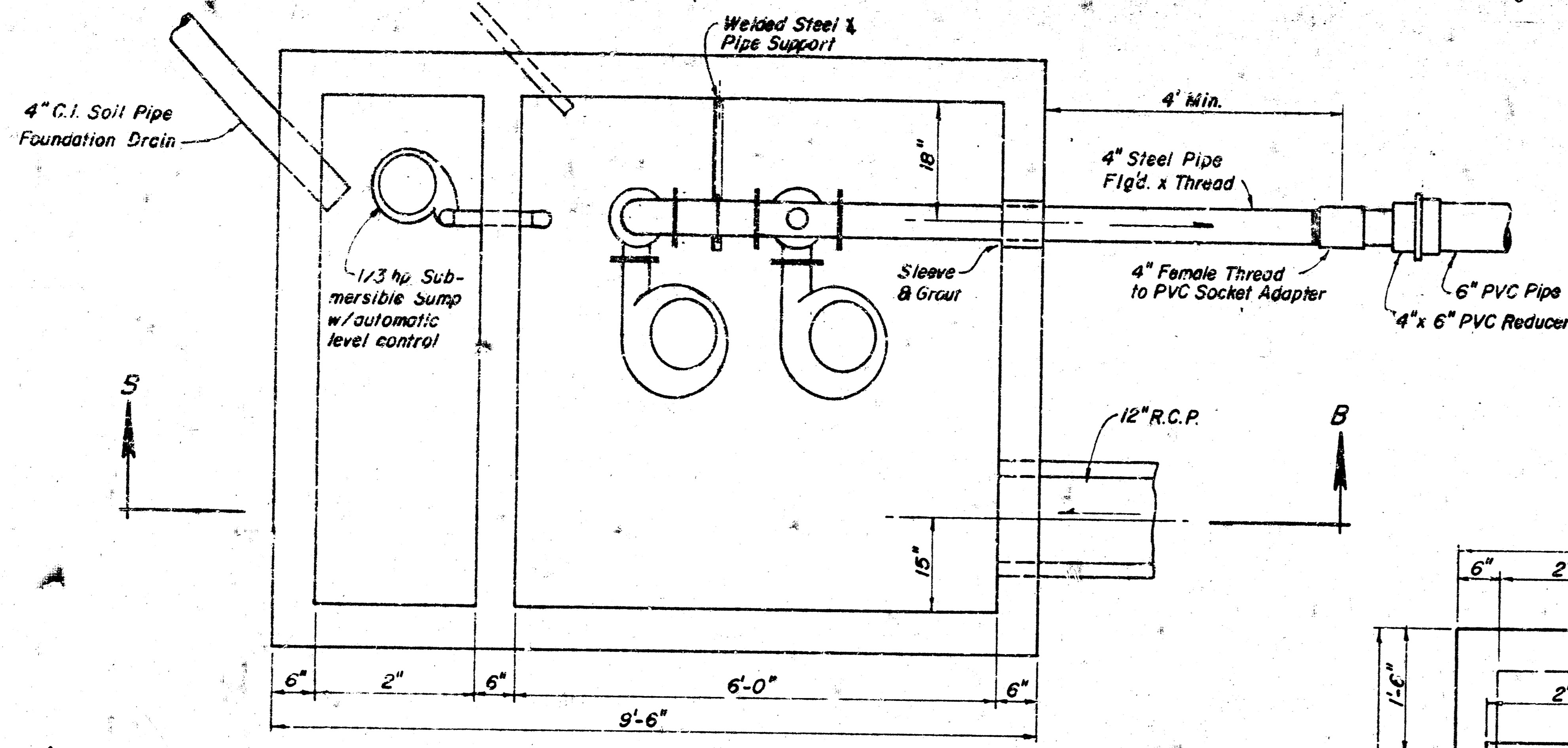


NOTE TO CONTRACTOR  
 This project will be constructed under  
 the supervision of the CITY ENGINEER  
 and conforming to the code  
 of the CITY OF WICHITA

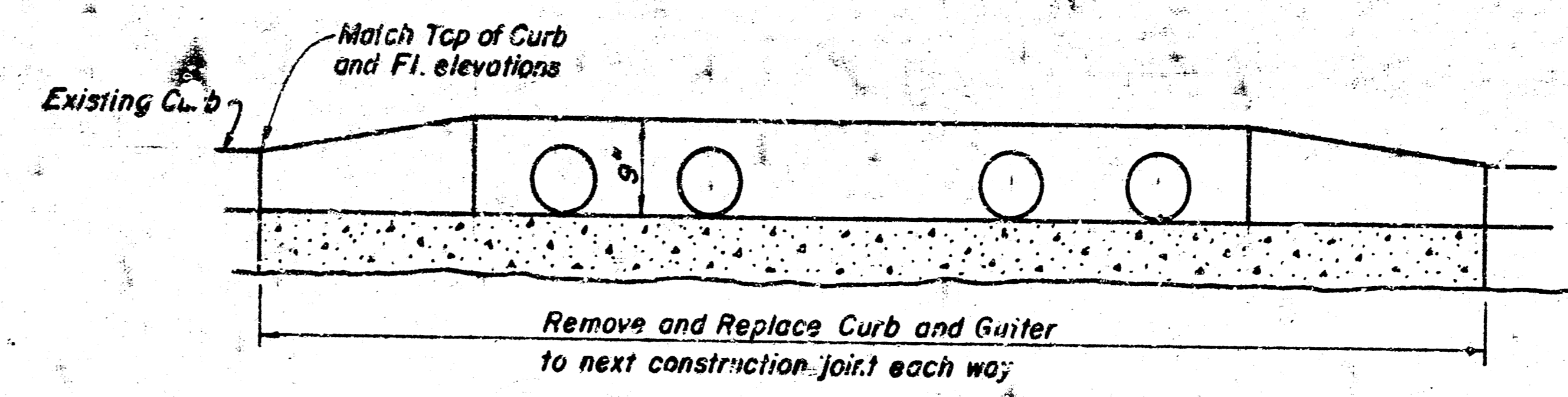
4-22-75  
 APPROVED AS NOTED  
 By CITY ENGINEER OF WICHITA  
 Sanitary Sewers \_\_\_\_\_  
 Storm Sewers D. E. J.  
 Driveway Approaches \_\_\_\_\_



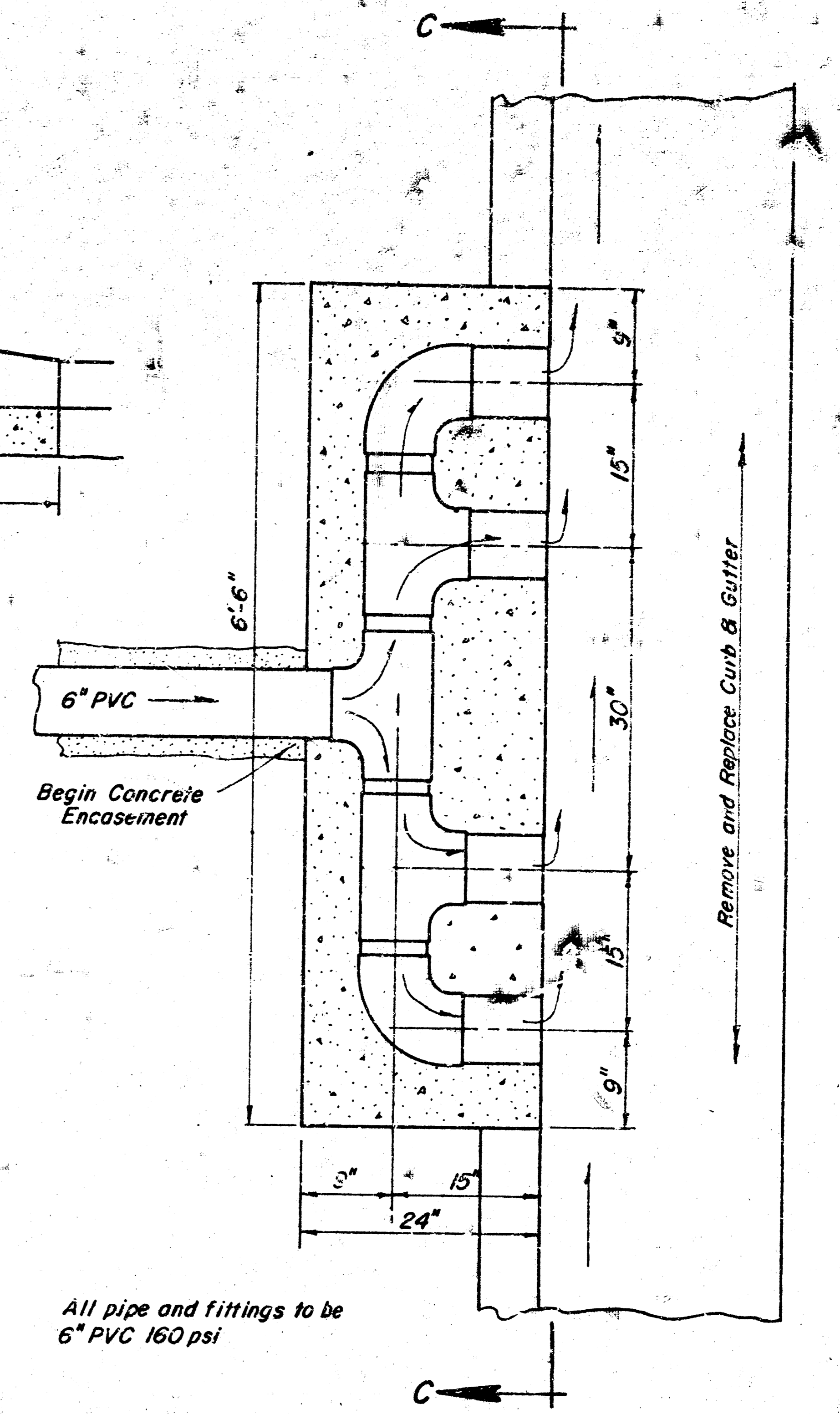
PLAN AND PROFILE  
 PRIVATE STORM SEWER  
 HIGHLAND SQUARE APARTMENTS  
 WICHITA, KANSAS



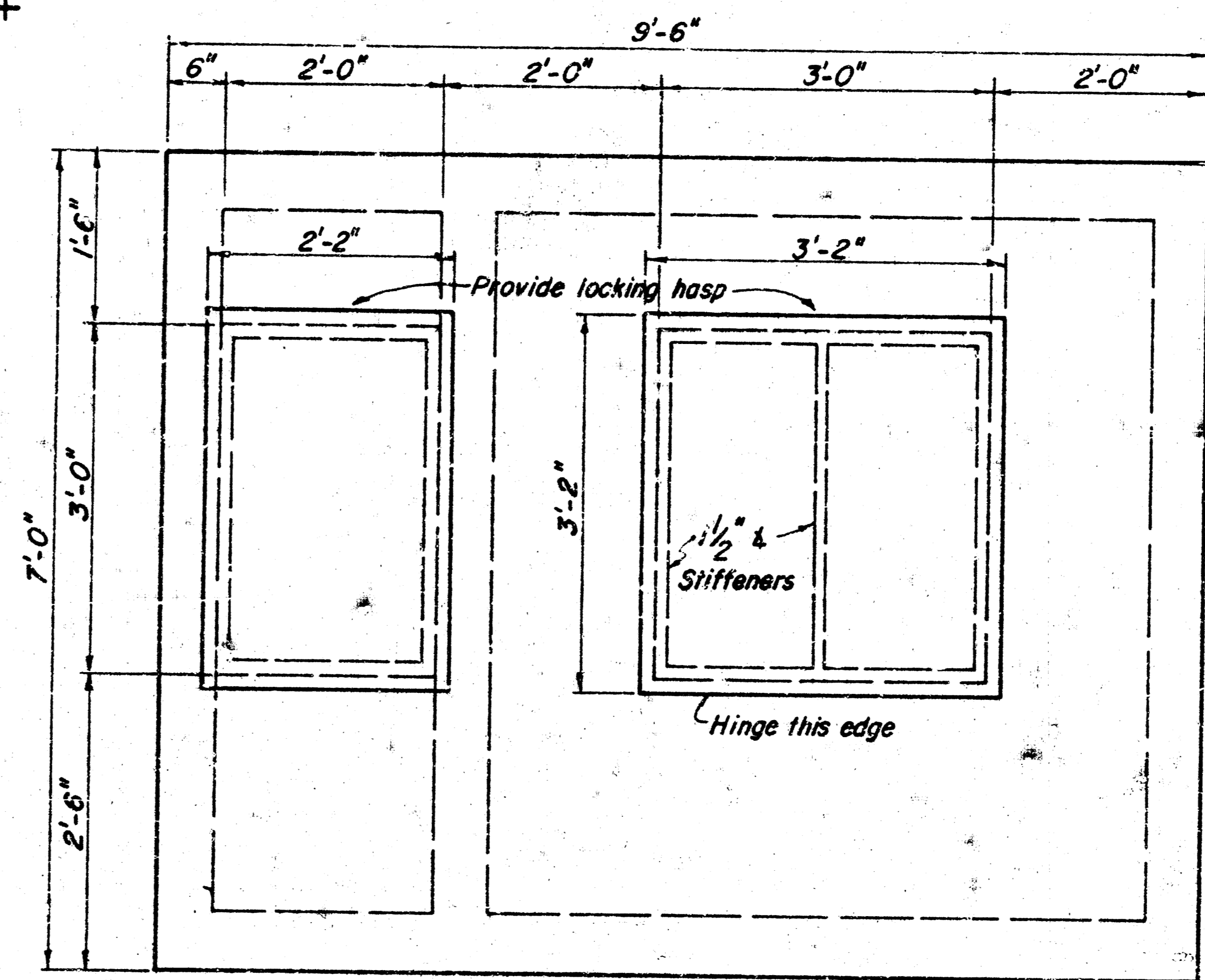
SECTION A-A



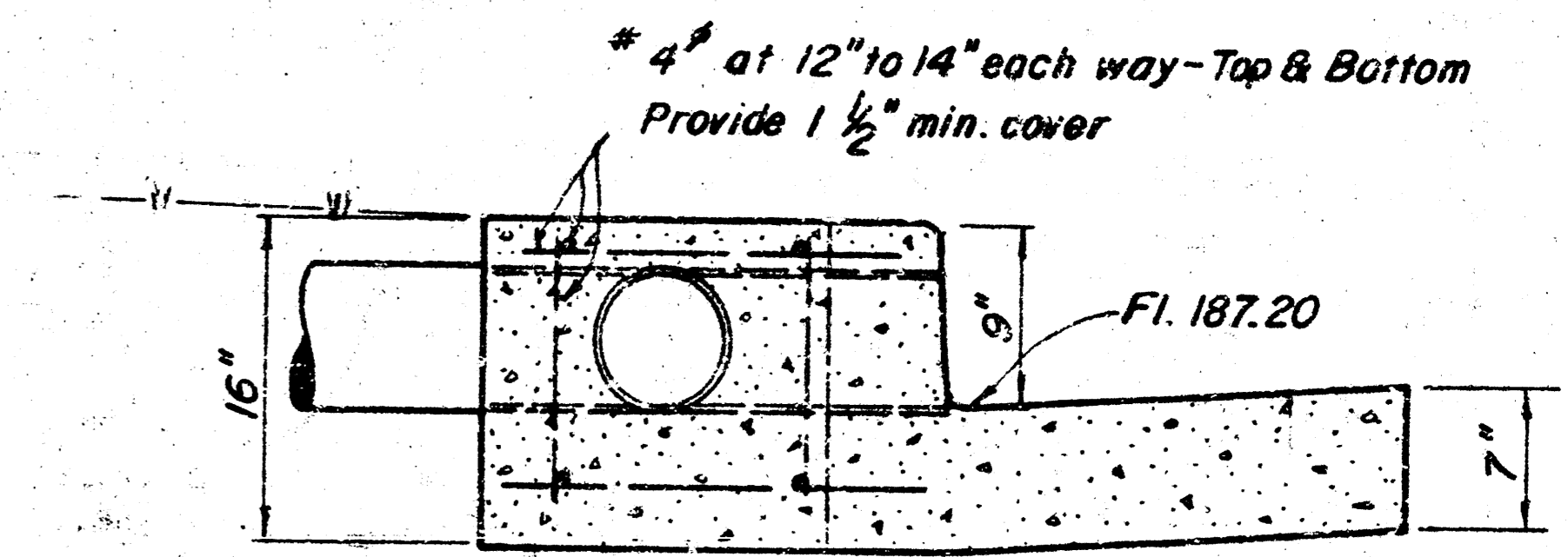
SECTION C-C



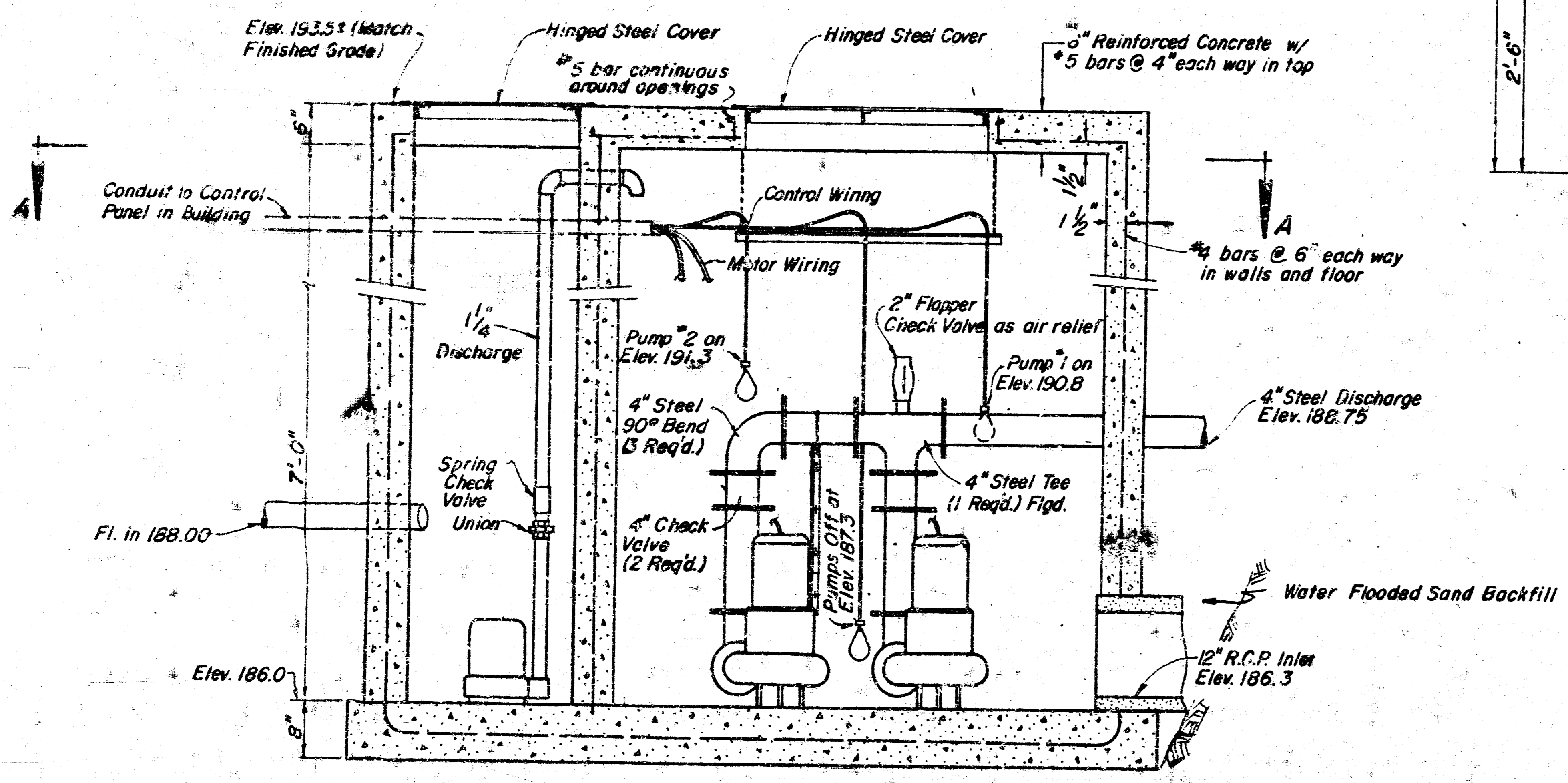
All pipe and fittings to be 6" PVC 160 psi



TOP PLAN



DISCHARGE HEADER AND THRUST BLOCK



SECTION B-B

Construction Notes:

1. Steel discharge piping to be new Schedule 40 pipe and fittings, with 150 lb. welding flanges
2. 4" Check Valves to be "Technocheck Short Form" suitable for between flange mounting, C.I. body, butterfly type with no springs.
3. Pumps to be Peabody-Barnes, Model SEH 502, heavy duty, submersible (or equal), 5 M.P., 1750 R.P.M. - 230 V. - 3 phase - 60 cycle electric motor driven.