

51.81
5
0

Catholic Diocese of Wichita, Owner
Lot 9, Block 3, 4th Add. to
Pine Valley Estates

N.W. Cor. Lot 9, Block 3,
4th Add. to Pine Valley Estates

Scale 1"=20'

Part of Lot 5,
Highland Square Add.

Sta. 5+05
Lift Station
(See Detail)

12" R.C.P.

City Standard
Drop Inlet
2-24" x 24" Grates

Temporary 15' Easement

Proposed 5' Easement

6" P.V.C. FORCE MAIN

Conc. Encasement For Cover

15' Utility Easement

435.92' N 33°51'20"W Property line

8" San Sewer

3" San Sewer

Prop. line
R/W
30'

4-22-75

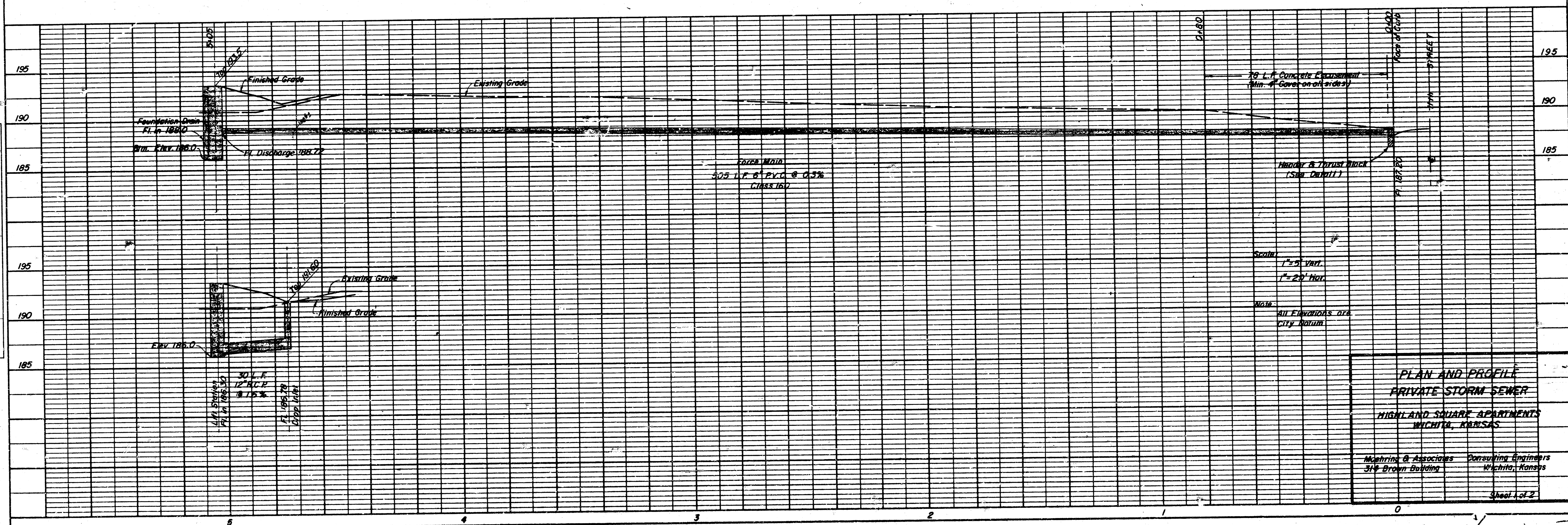
APPROVED AS NOTED
By CITY ENGINEER OF WICHITA

Sanitary Sewers
Storm Sewers
Drainway Appurtenances

NOTE TO CONTRACTOR
This project shall be constructed under
the supervision of the CITY ENGINEER
and conform to the code
of the CITY OF WICHITA

PLAN
DATE
BY
SURVEYED
NOTED
CHECKED
DATE OF CHECK
NO.

PROFILE
DATE
BY
SURVEYED
NOTED
CHECKED
DATE OF CHECK
NO.



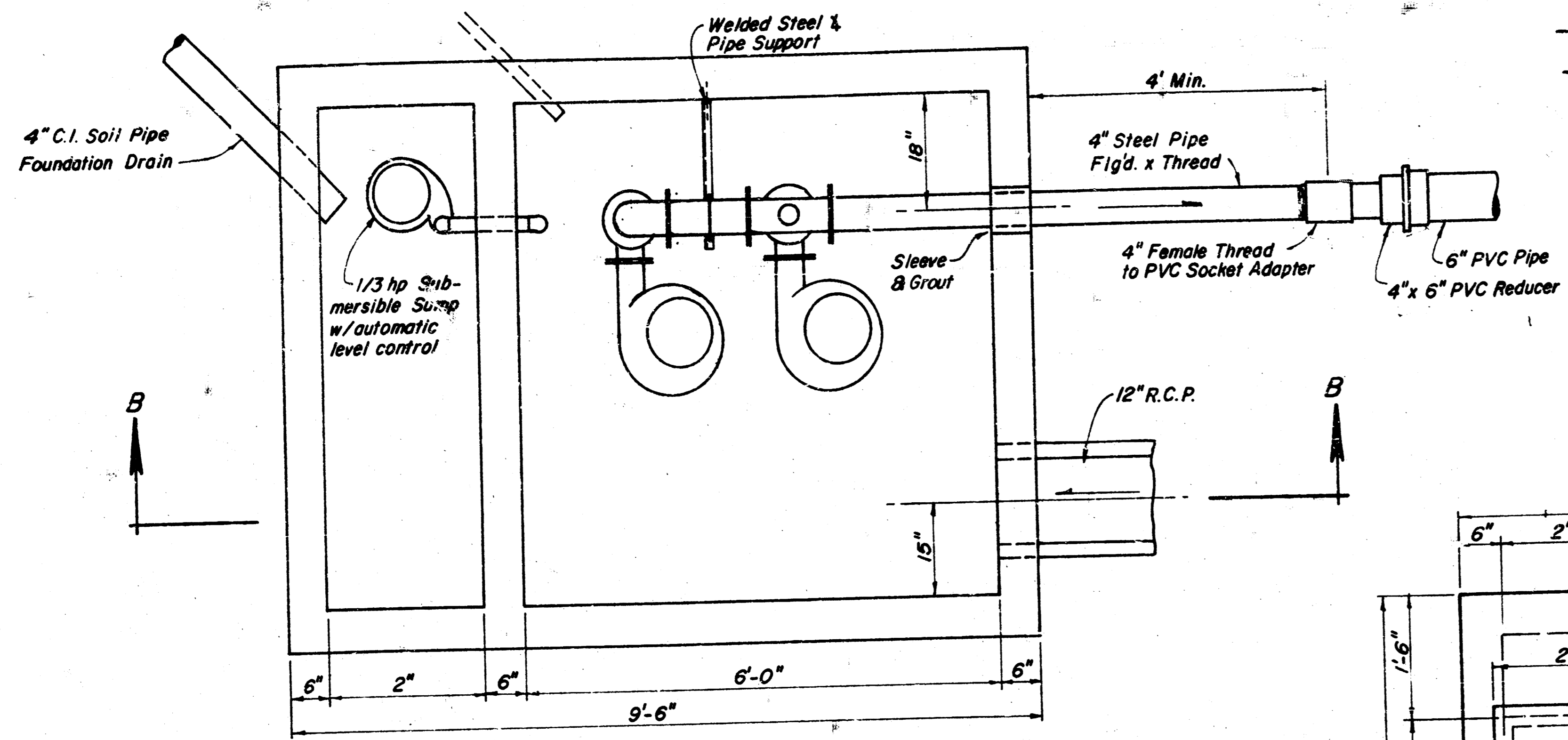
PLAN AND PROFILE
PRIVATE STORM SEWER
HIGHLAND SQUARE APARTMENTS
WICHITA, KANSAS

Mohrman & Associates
314 Brown Building
Wichita, Kansas

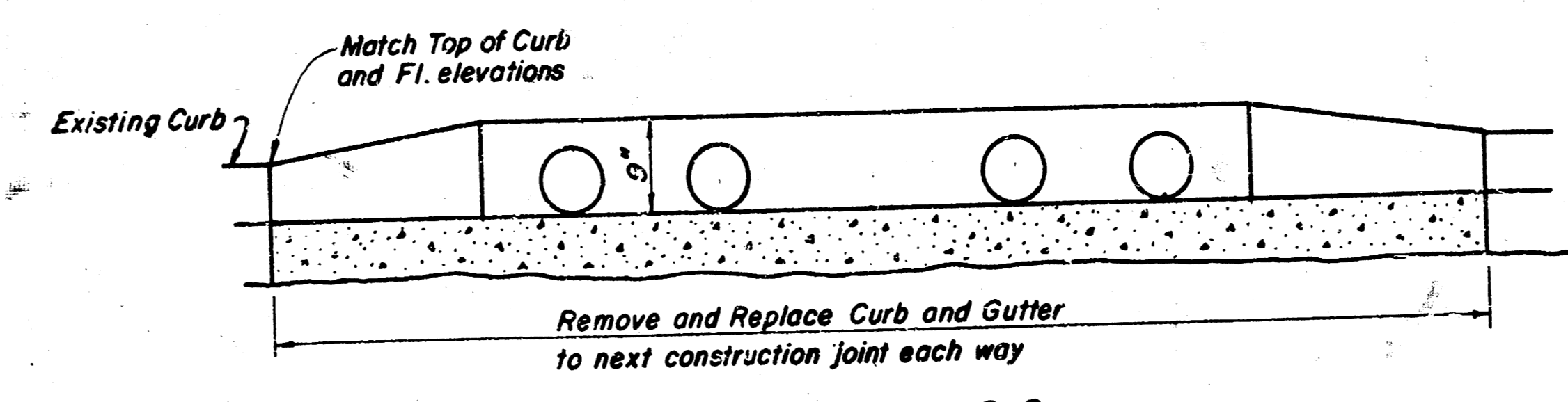
Sheet 1 of 2

PLATE 1 - PLAN, PROFILE, P.A.S.
LUMBER PAPER CO., S. F. CO.
NO. 1000-1

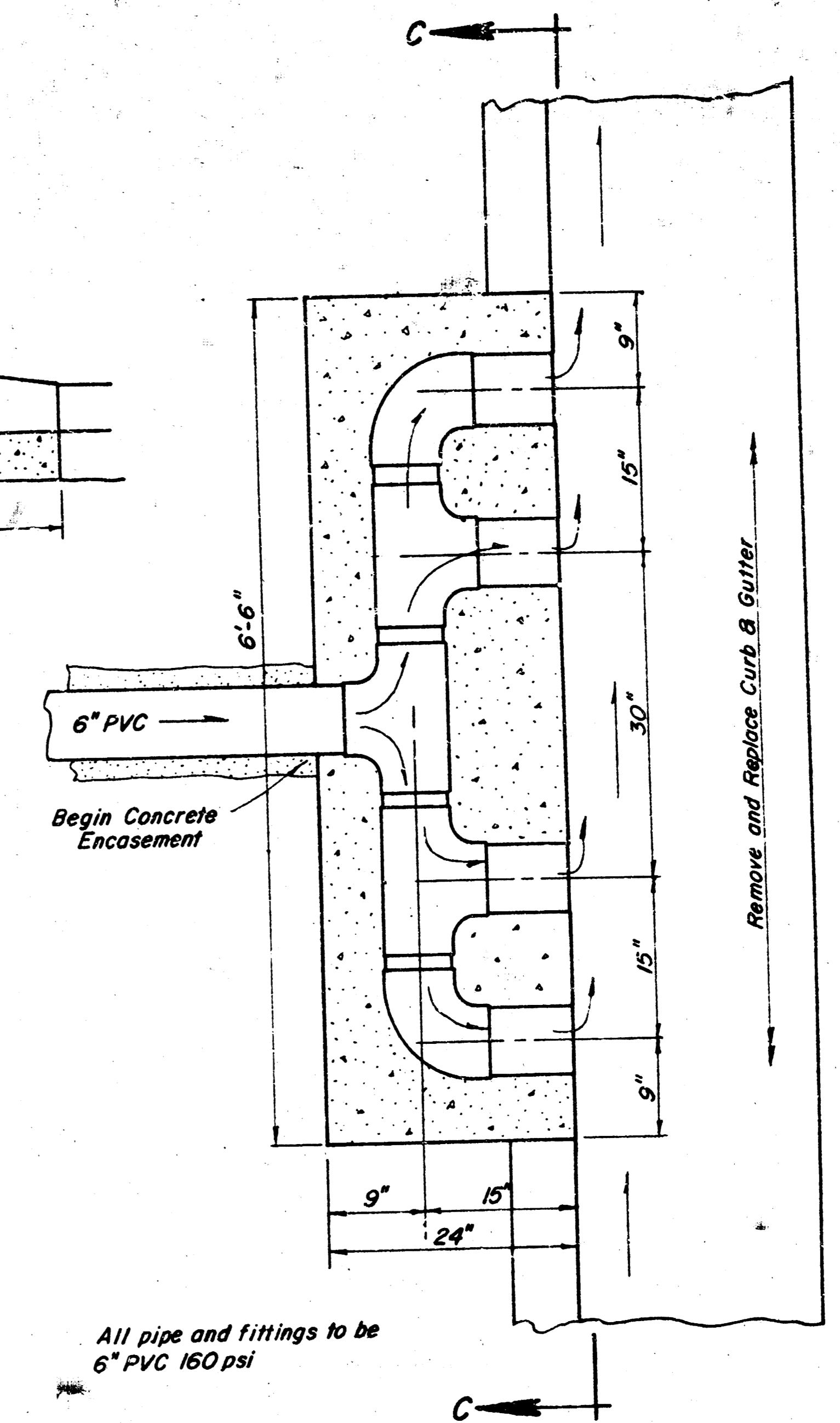
FILMED FROM THE BEST
AVAILABLE COPY....



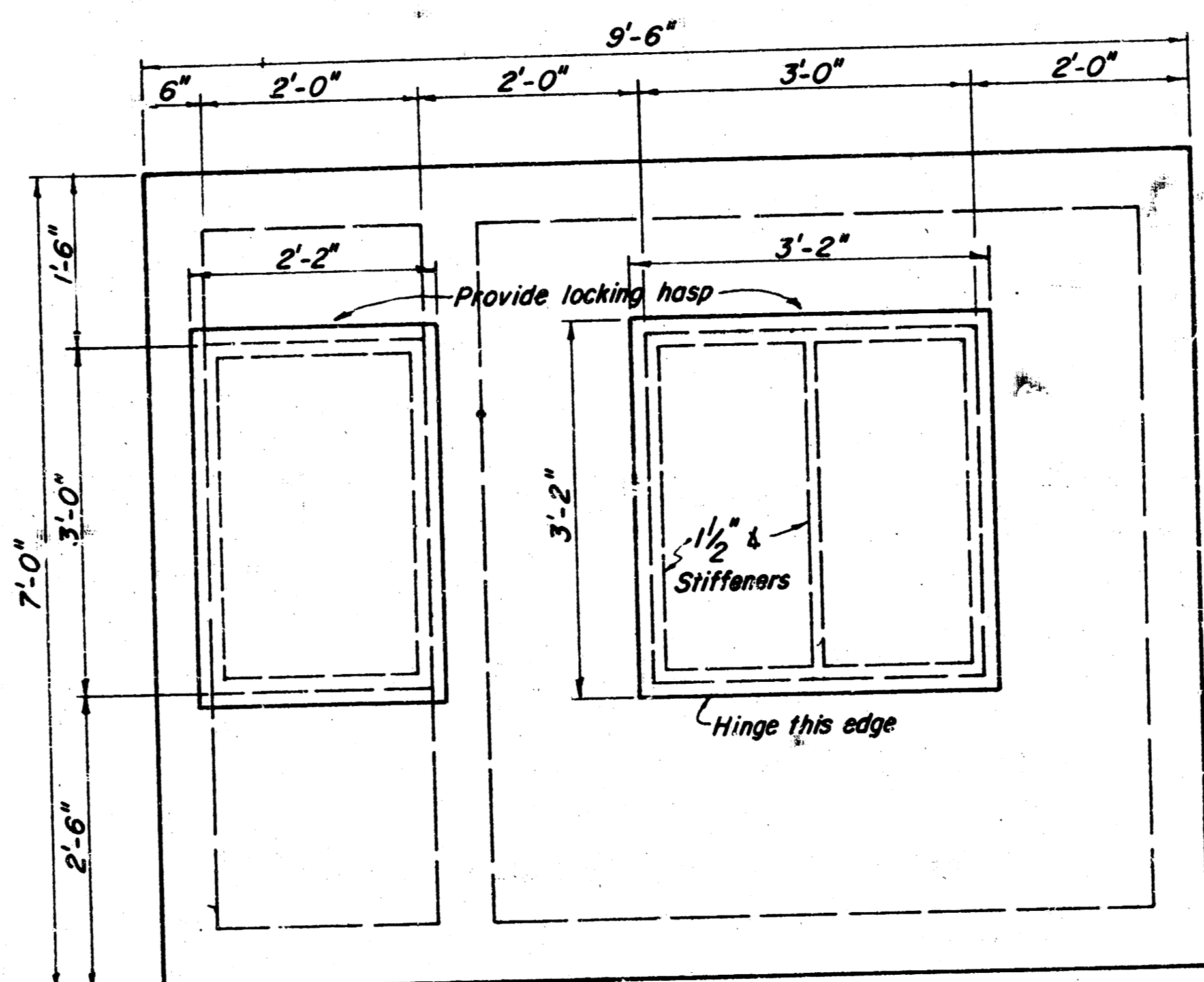
SECTION A-A



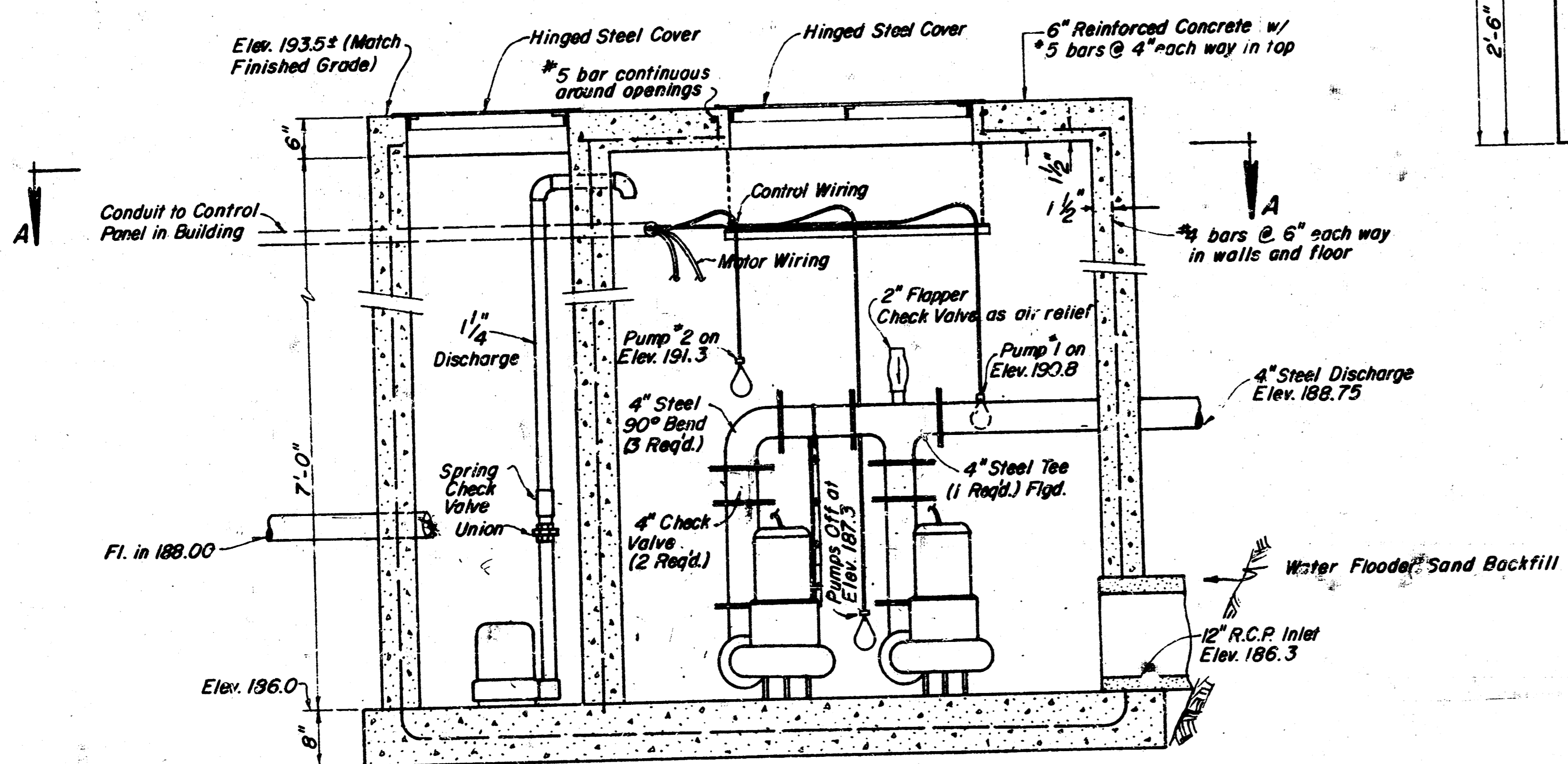
SECTION C-C



All pipe and fittings to be 6" PVC 160 psi



TOP PLAN



SECTION B-B

Construction Notes:

1. Steel discharge piping to be new Schedule 40 pipe and fittings, with 150 lb. welding flanges
2. 4" Check Valves to be "Technocheck Short Form" suitable for between flange mounting, C.I. body, butterfly type with no springs.
3. Pumps to be Peabody-Barnes Model SEH 502, heavy duty, submersible (or equal). 5 H.P. - 1750 RPM - 230 V. - 3 phase - 60 cycle electric motor driven.

MISCELLANEOUS DETAILS
PRIVATE STORM SEWER
HIGHLAND SQUARE APARTMENTS
WICHITA, KANSAS
Moehring & Associates
314 Brown Building
Consulting Engineers
Wichita, Kansas
Sheet 2 of 2
11-25