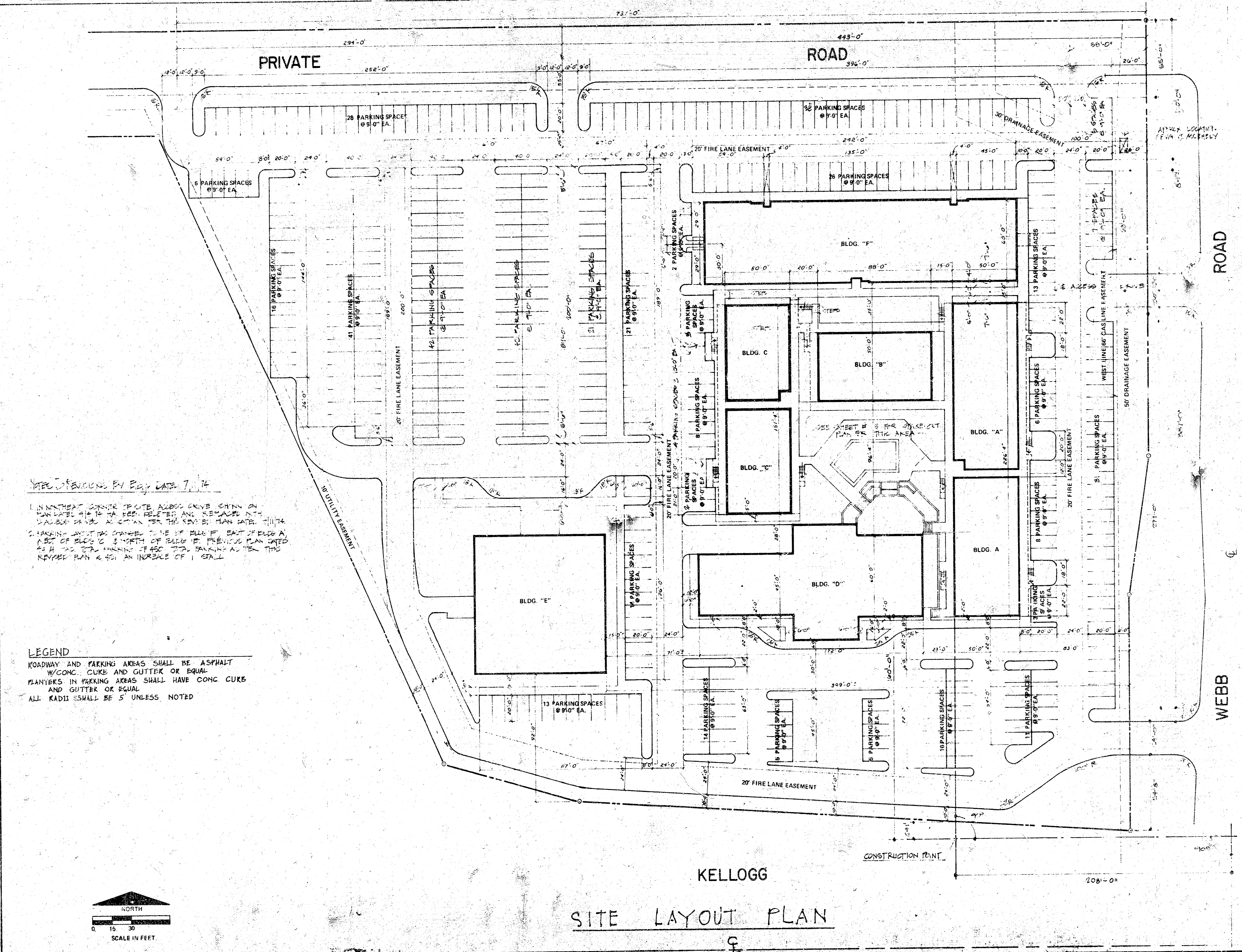


A large empty grid on graph paper, consisting of approximately 20 columns and 10 rows of small squares.

A grid on graph paper with some faint lines and markings. The grid is approximately 20 columns wide and 10 rows high. There are some faint horizontal and vertical lines drawn across the grid, possibly representing a diagram or a set of data points. The markings are very light and difficult to discern.

11

11



NOTE: REVISIONS BY E.D. DATE 7/74

1. IN NORTHWEST CORNER OF SITE ABOVE DRIVE CHAIN ON PLAN LABEL #10 IS TO BE RELOCATED AND REPLACED WITH VALVE BOX AS SHOWN FOR THE REVISED PLAN DATE 7/74.

2. PARKING SPACES CHANGE TO BE 17' FULLY EAST OF BLDG. A WEST OF BLDG. C & NORTH OF BLDG. D. PREVIOUS PLAN SHOWN WITH 14' TO 17' PARKING SPACES. THIS CHANGE WILL INCREASE THE NUMBER OF SPACES TO 17.

LEGEND

ROADWAY AND PARKING AREAS SHALL BE ASPHALT W/CONC. CURB AND GUTTER OR EQUAL

PLANTERS IN PARKING AREAS SHALL HAVE CONC. CURB AND GUTTER OR EQUAL

ALL RADII SHALL BE 5' UNLESS NOTED

KELLOGG

SITE LAYOUT PLAN

REVISIONS	DATE 4/11/74
BY E.D.	(SEE NOTE) 7/11/74
DESIGNER NED BLAKE	CHECKED BY
ENGINEERING P.D. PRICE	
TECHNICIAN	
SHEET TITLE	
LAYOUT PLAN	DATE MARCH 22, 1974
PROJECT	
F.N.C. DEVELOPMENT	SHEET NUMBER 2 OF 11 SHEETS
 otinger-smith corporation Consultants in Planning 625 First National Bank Building Wichita, Kansas 67202	