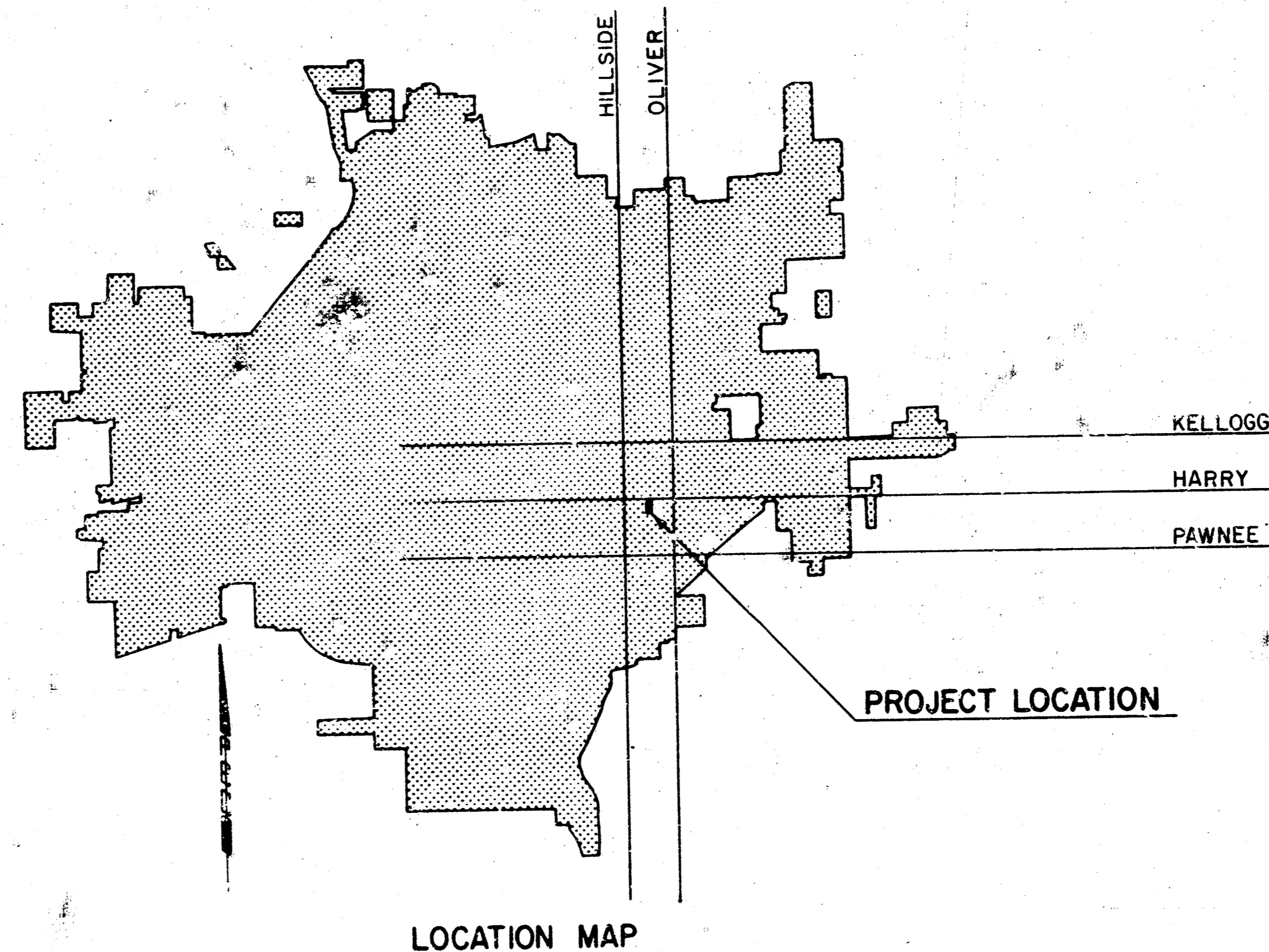


CONSTRUCTION PLANS FOR  
**STORM WATER SEWER IMPROVEMENTS**  
 IN  
**GEORGETOWN II ADDITION**  
 WICHITA, KANSAS

KANSAS GENERAL PROPERTIES, INC.

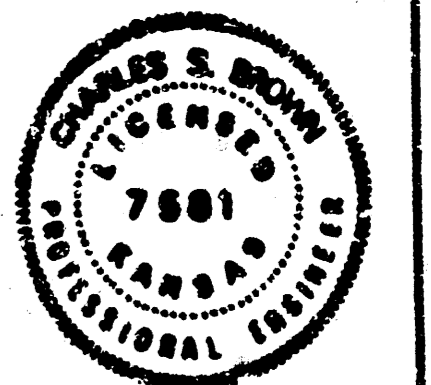
INDEX OF SHEETS

SHEET NO. 1	TITLE SHEET
2	GENERAL PROJECT INFORMATION
3	TYPE IA CURB INLET DETAILS
4	REIN. CONC. HEADWALL & EROSION CONTROL DETAILS
5	PLAN-PROFILE - LINE No. 1
6	PLAN-PROFILE - LINE No. 2



DECEMBER 1983

PLANS PREPARED BY  
**PROFESSIONAL ENGINEERING CONSULTANTS, P.A.**  
 ENGINEERS  
 WICHITA, KANSAS



# GEORGETOWN II

## Wichita, Sedgwick County, Kansas.

### BENCH MARKS

- BM #4 SOUTH RIM OF MANHOLE LOCATED IN LOT 13, BLOCK 2, GEORGETOWN II ADDITION. EL. = 136.74
- BM #5 CHISELED "C" ON TOP OF CURB, SOUTH SIDE OF HARRY STREET, 101' WEST OF WEST PROPERTY LINE OF GEORGETOWN II ADDITION. EL. = 155.69
- BM #6 RAILROAD SPIKE ON EAST SIDE OF POWER POLE, NORTH SIDE OF HARRY STREET, 58.5' EAST OF WEST LINE OF GEORGETOWN II ADDITION. EL. = 155.395
- CITY BM BENCH MARK DISC ON WEST END OF NORTH HUGBARD ON RCB, APPROXIMATELY 150' EAST OF OLIVER AND HARRY STREETS. EL. = 142.433

### GENERAL NOTES

1. ALL ELEVATIONS BASED ON CITY OF WICHITA DATUM. (MEAN SEA LEVEL - 1187.4)
2. ALL CONSTRUCTION METHODS AND MATERIALS SHALL BE IN ACCORDANCE WITH THE CITY OF WICHITA STANDARD SPECIFICATIONS UNLESS OTHERWISE NOTED ON THE PLANS.
3. THE CONTRACTOR SHALL ERECT WARNING SIGNS, FLASHING LIGHTS, AND/OR BARRICADES TO INSURE SAFETY AS DIRECTED BY THE ENGINEER. ALL TRAFFIC CONTROL WILL BE IN ACCORDANCE WITH THE MUTCD.
4. THE CONTRACTOR SHALL NOTIFY EACH OF THE FOLLOWING UTILITY COMPANIES PRIOR TO THE BEGINNING OF CONSTRUCTION AND SHALL REQUEST THAT ALL EXISTING LINES BE FLAGGED:
 

KANSAS GAS & ELECTRIC COMPANY 1900 EAST CENTRAL 264-1111 (EXT. 248) JERRY LANE	CITY OF WICHITA WATER DEPT. 455 N. MAIN STREET 268-4555, BERRY GEGEN
SOUTHWESTERN BELL TELEPHONE 154 NORTH BROADWAY 262-5500	
GAS SERVICE COMPANY 1021 E. 26TH NO. 263-7511, GENE CURLESS	AIR CAPITAL CABLEVISION 705 N. BROADWAY 267-2889

5. THE CONTRACTOR MUST ALSO NOTIFY THE TELEPHONE COMPANY 24 HOURS PRIOR TO BEGINNING ANY CONSTRUCTION WORK NEAR BURIED TELEPHONE LINES.

6. THE CONTRACTOR SHALL BEGIN WORK WITHIN 10 CALENDAR DAYS AFTER THE NOTICE TO PROCEED AND SHALL COMPLETE THE WORK WITHIN 40 CALENDAR DAYS THEREAFTER. FAILURE TO COMPLETE THE WORK WITHIN THE ALLOTTED TIME WILL RESULT IN THE CONTRACTOR BEING SUBJECT TO LIQUIDATED DAMAGES IN THE AMOUNT OF \$400 PER DAY.

7. THE CONTRACTOR WILL BE REQUIRED TO COORDINATE HIS WORK WITH OTHER CONTRACTORS ON THE PROJECT SITE, SUCH AS CONTRACTORS FOR SANITARY SEWER, WATER, DETENTION POND AND STREET IMPROVEMENTS.

8. THE CONTRACTOR SHALL CAREFULLY PRESERVE ALL BENCH MARKS, REFERENCE POINTS AND STAKES AND, IN CASE OF WILLFUL OR CARELESS DESTRUCTION, SHALL BE CHARGED WITH RESULTING EXPENSE AND SHALL BE RESPONSIBLE FOR ANY MISTAKES THAT MAY BE CAUSED BY THEIR UNNECESSARY LOSS OR DISTURBANCE.

9. EXCESS MATERIAL SHALL BE EMBANKED ON SITE AS DIRECTED BY THE ENGINEER.

10. BROKEN CONCRETE REMOVED BY THE STORM SEWER CONTRACTOR SHALL BE STOCKPILED FOR USE AS RIP RAP BY OTHER CONTRACTORS.

11. BROKEN ASPHALT REMOVED BY THE STORM SEWER CONTRACTOR SHALL BE DISPOSED ON SITE AS DIRECTED BY THE ENGINEER.

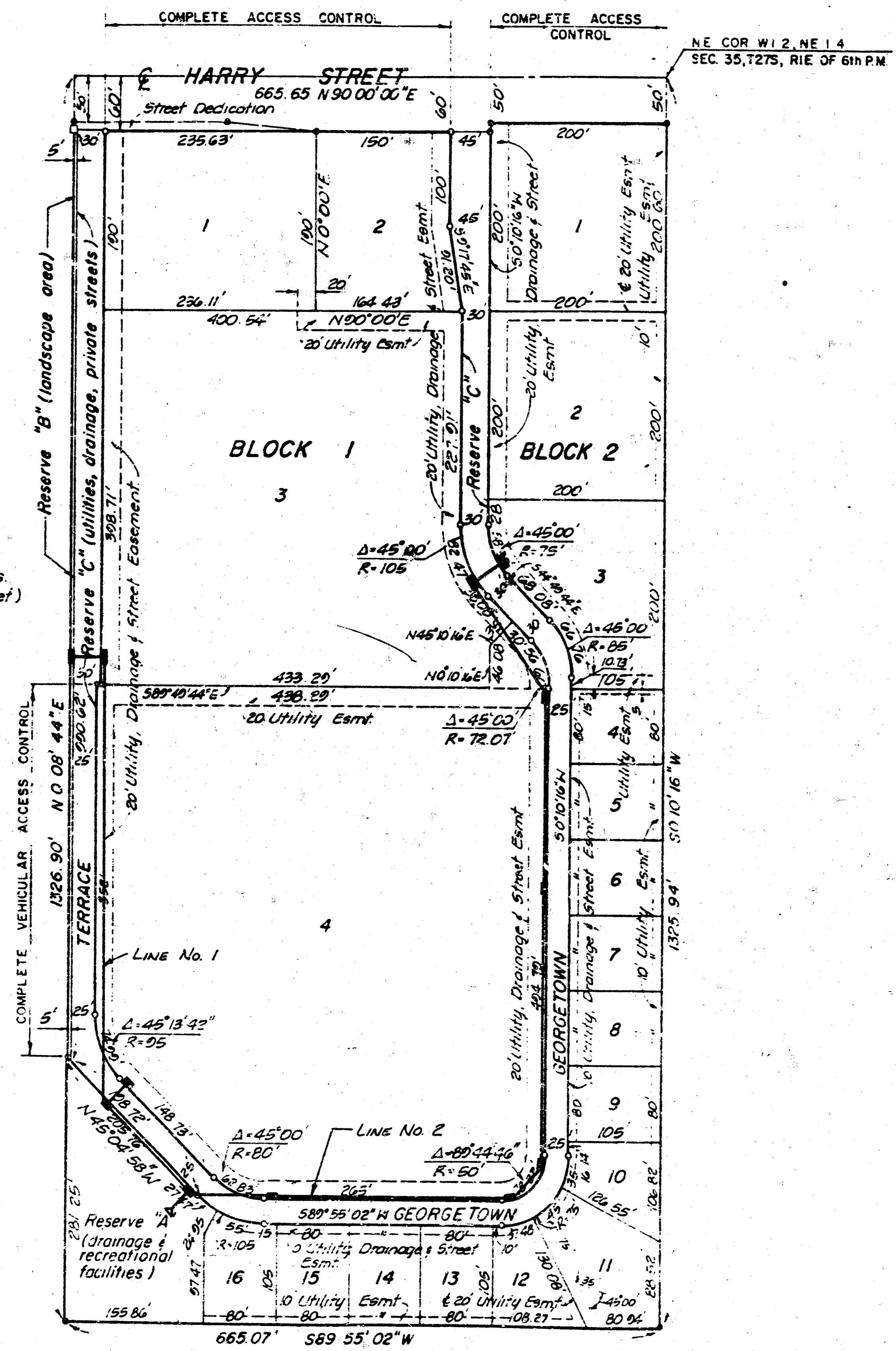
12. THE QUANTITIES SHOWN ARE APPROXIMATE AND ARE FOR INFORMATION ONLY. THE CONTRACTOR SHALL CONSTRUCT THE PROJECT ACCORDING TO THE INTENT OF THE PLANS AND SPECIFICATIONS AND SHALL SATISFY HIMSELF OF ALL WORK ITEMS AND QUANTITIES ACCORDINGLY. A LUMP SUM BID SHALL BE SUBMITTED FOR THE SATISFACTORY COMPLETION OF THE ENTIRE PROJECT.

13. THE OWNER WILL FURNISH HORIZONTAL CONTROL POINTS FOR LOCATING THE PRINCIPAL COMPONENTS OF THE WORK, TOGETHER WITH A SUITABLE NUMBER OF BENCH MARKS ADJACENT TO THE WORK. FROM THE INFORMATION PROVIDED BY THE OWNER, THE CONTRACTOR SHALL DEVELOP AND MAKE ALL DETAIL SURVEYS NEEDED FOR CONSTRUCTION, SUCH AS SLOPE STAKES, BLUE TOPS, BATTER BOARDS, TRENCH CUTS AND OTHER WORKING POINTS, LINES, AND ELEVATIONS.

### SUMMARY OF QUANTITIES

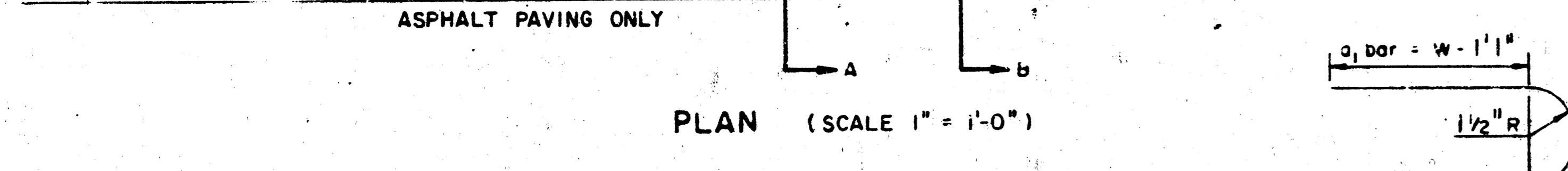
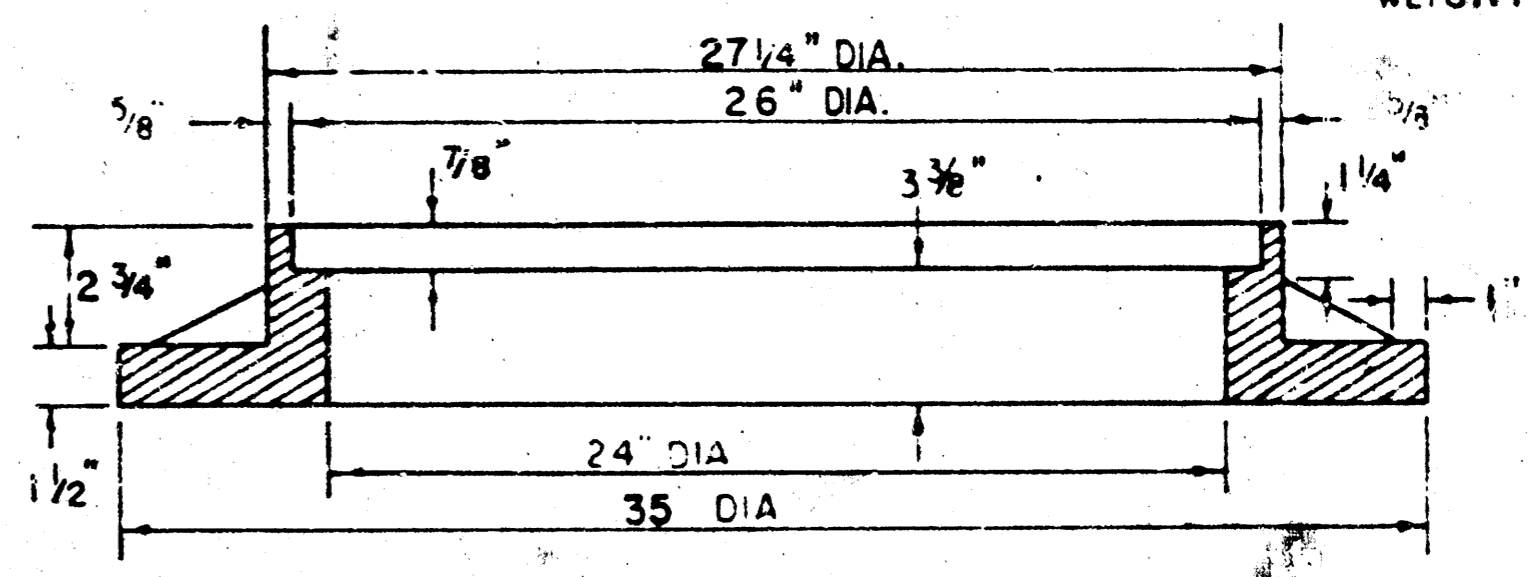
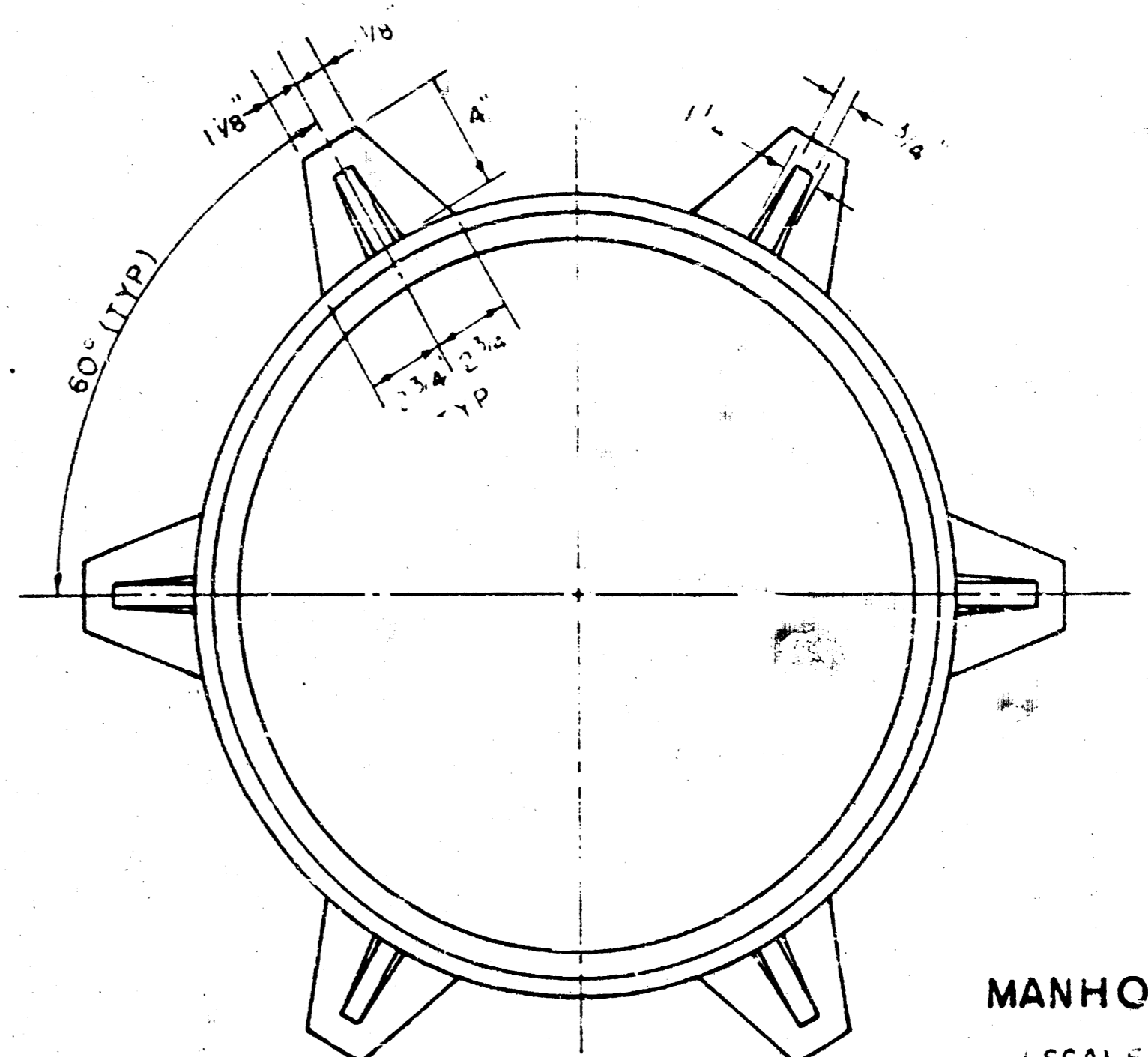
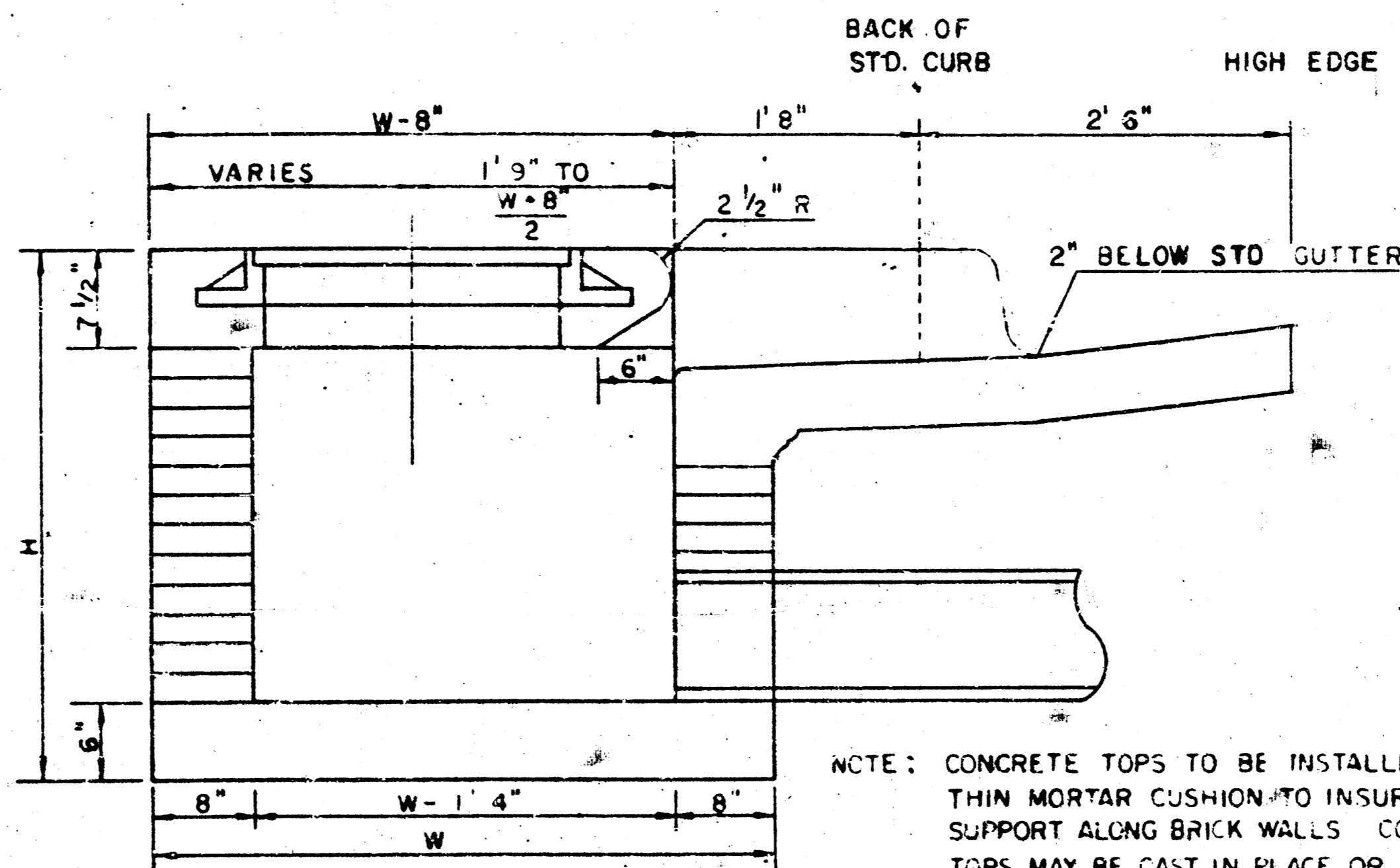
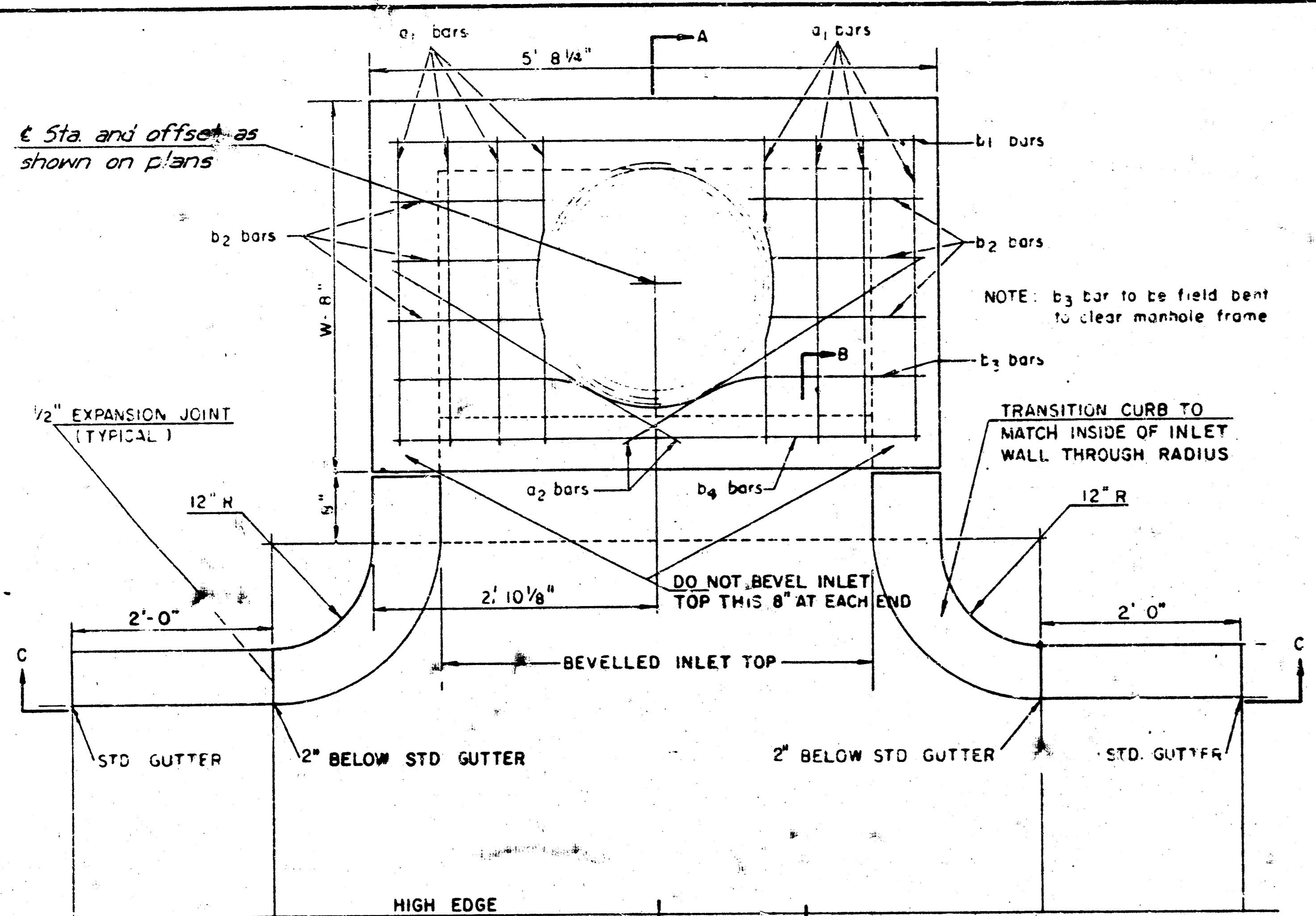
Item	Description	Quantity	Unit
1.	30" RCP	368.20	LF
2.	24" RCP	321.30	LF
3.	21" RCP	236.36	LF
4.	18" RCP	284.03	LF
5.	15" RCP	596.61	LF
6.	Type 1A Inlet, W = 4'-2"	7	Ea.
7.	Type 1A Inlet, W = 5'-0"	2	Ea.
8.	Type 1A Inlet, W = 6'-0"	3	Ea.
9.	Reinf. Conc. Headwall	1	Ea.
10.	Riprap	153	S.Y.

Scale 1" = 100'  
Aug. 25, 1983  
□ Iron Set  
● Iron Pnt.  
○ Control Pts.  
(Irons not set)



**GEORGETOWN II**  
STORM WATER SEWER IMPROVEMENTS  
**GENERAL PROJECT INFORMATION**  
KANSAS GENERAL PROPERTIES, INC.  
PROFESSIONAL ENGINEERING CONSULTANTS, P.A.

ENGINEERS	2/
WICHITA, KANSAS	4/
Designed by CSB	Job No. 36-82522-2
Drawn by CAR	Date Dec. 1983



STEEL SCHEDULE

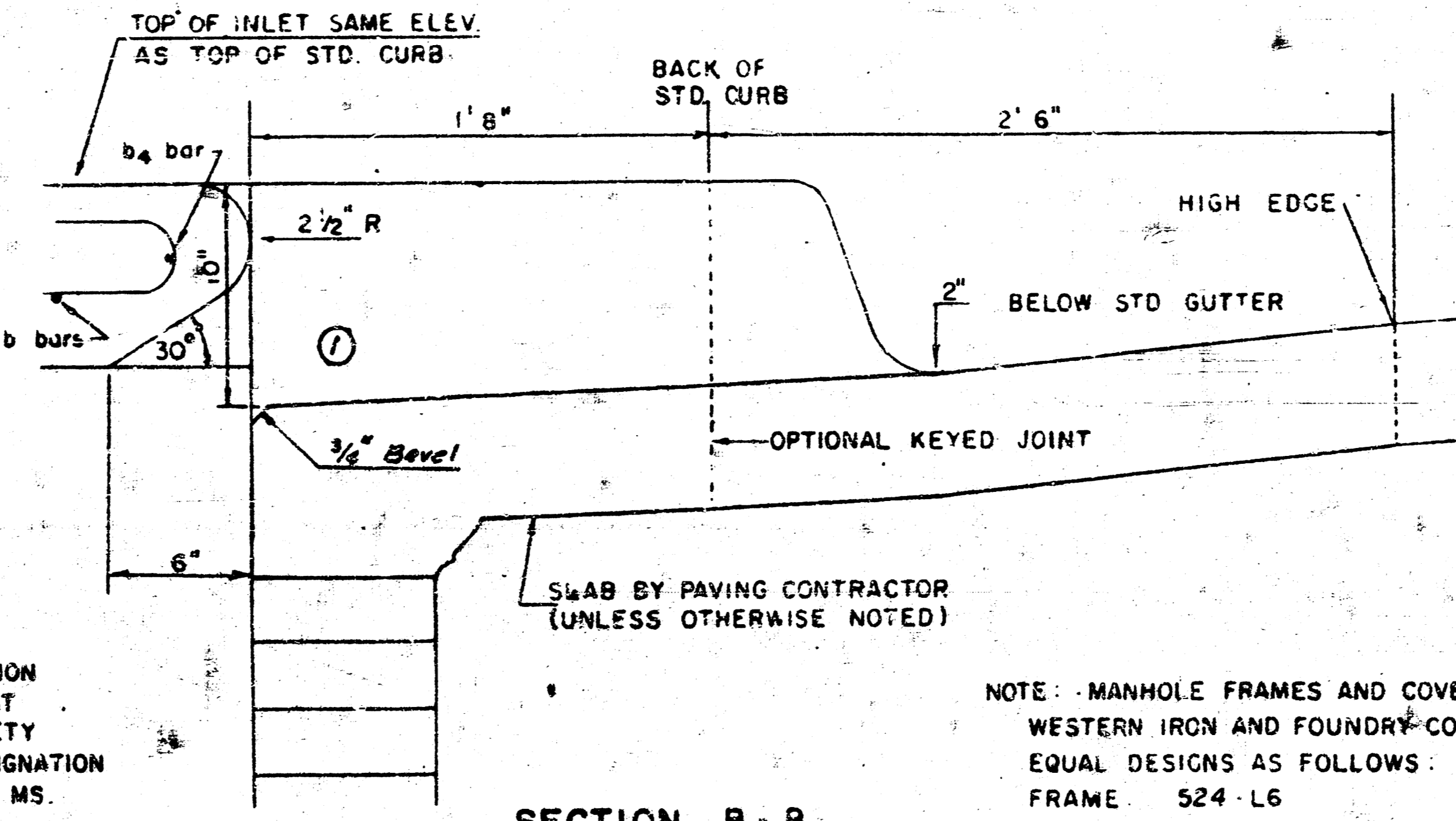
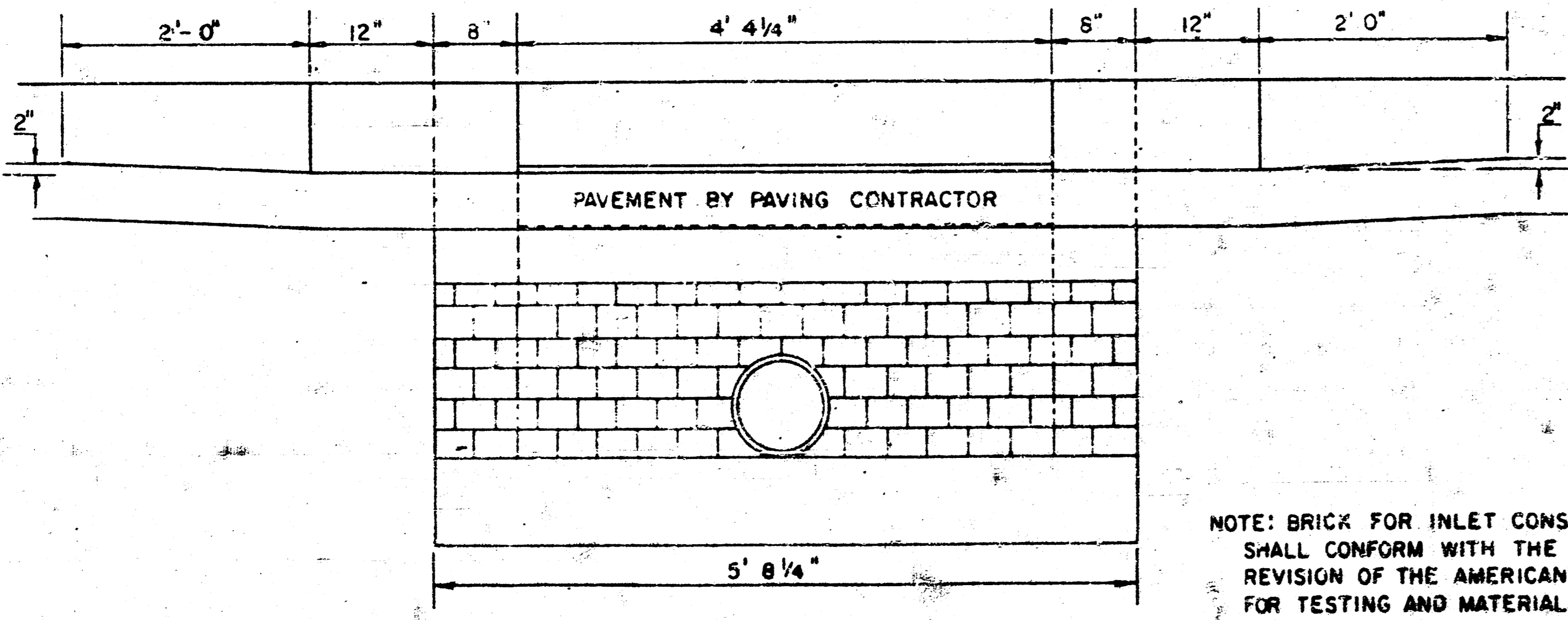
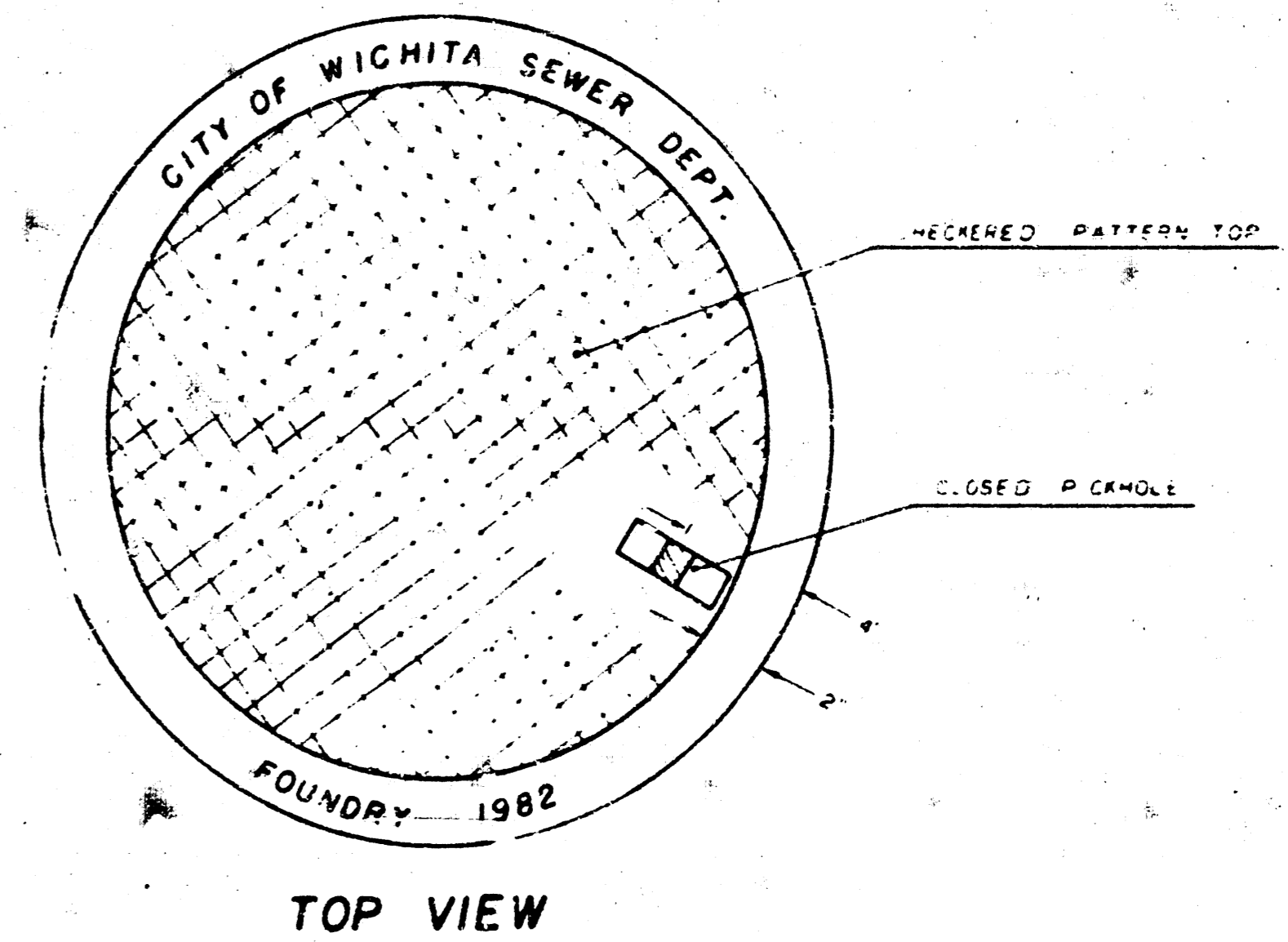
BAR NUMBER	a <sub>1</sub>	a <sub>2</sub>	b <sub>1</sub>	b <sub>2</sub>	b <sub>3</sub>	b <sub>4</sub>	WT. LBS.
1	4	4	4	4	4	4	60
2	4	4	4	4	4	4	77
3	4	4	4	4	4	4	97
4	4	4	4	4	4	4	111
5	4	4	4	4	4	4	124

BENDING DIAGRAM

W	PRE-CAST TOP SIZE	PIPE SIZE	CU YD CONC
4'2"	36" x 5'8 1/4" x 7 1/2"	21" B SMALLER	0.46
5'0"	44" x 5'8 1/4" x 7 1/2"	24" B 30"	0.57
6'0"	54" x 5'8 1/4" x 7 1/2"	36" B 42"	0.71
7'0"	64" x 5'8 1/4" x 7 1/2"	48" B 54"	0.84
8'0"	74" x 5'8 1/4" x 7 1/2"	60" B 66"	0.97

NOTE: a<sub>2</sub> BARS TO BE PLACED APPROX 2" BELOW TOP OF INLET COVER

MANHOLE COVER

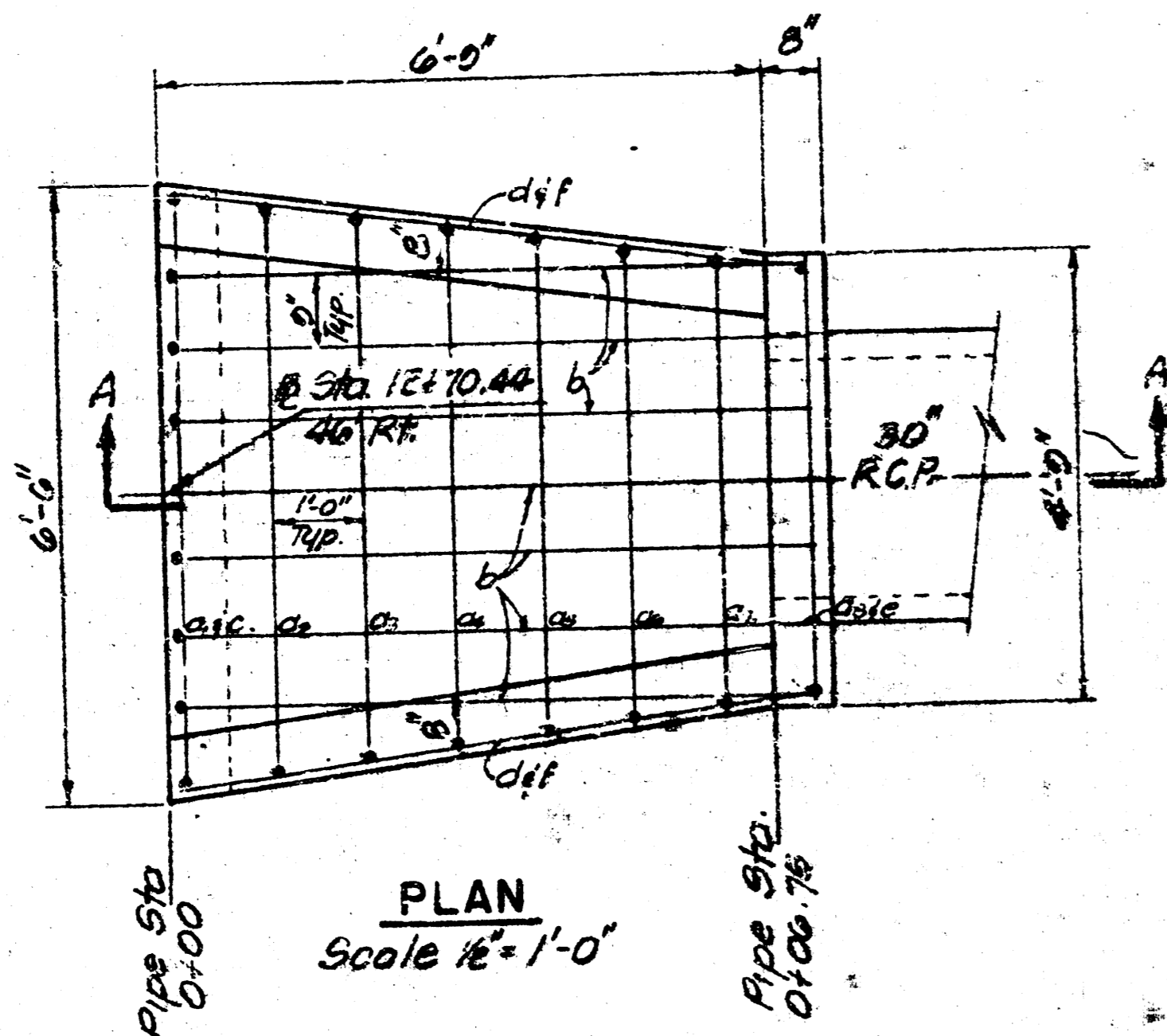


NOTE: BRICK FOR INLET CONSTRUCTION SHALL CONFORM WITH THE LATEST REVISION OF THE AMERICAN SOCIETY FOR TESTING AND MATERIALS DESIGNATION C-32 FOR MANHOLE BRICK GRADE MS.

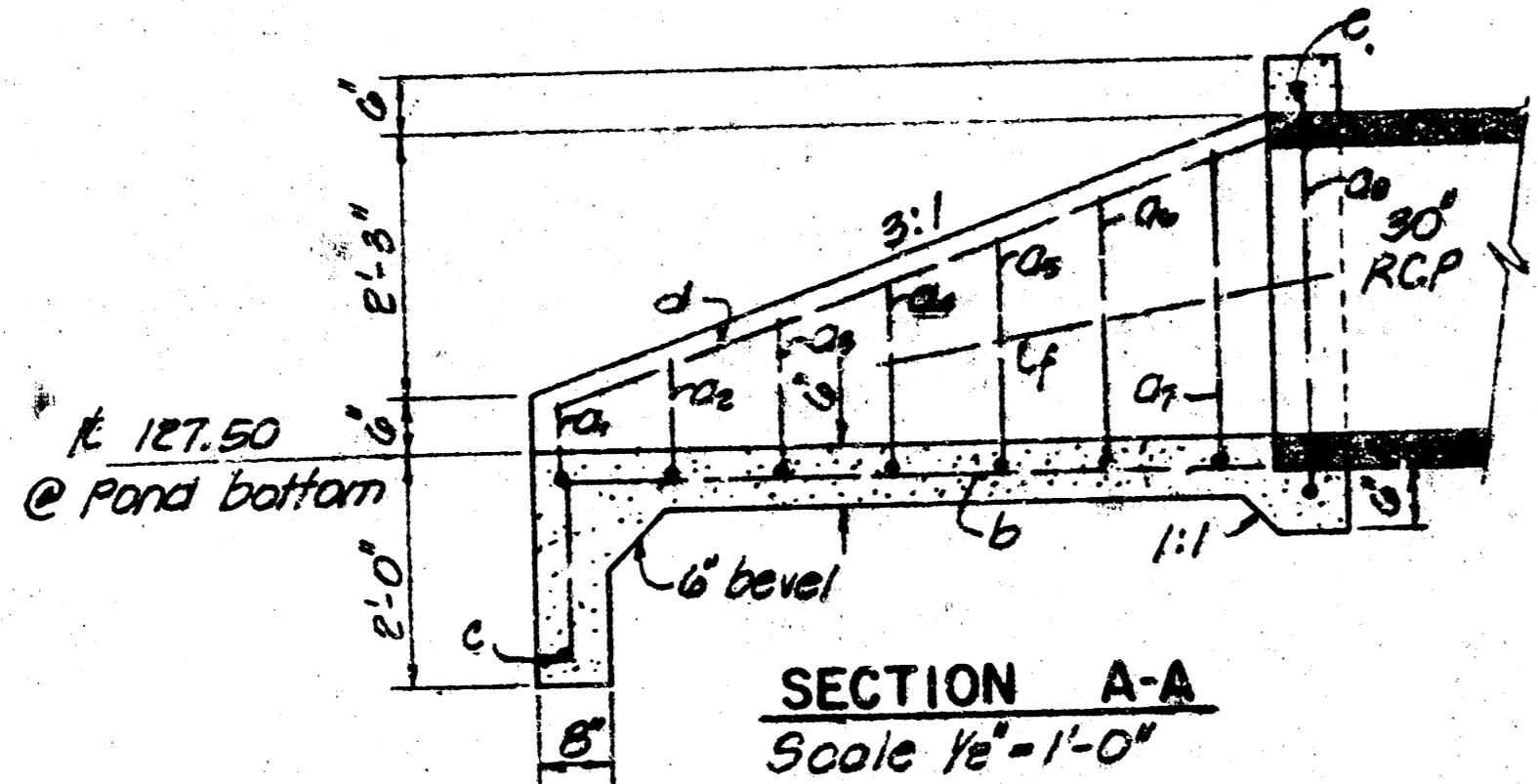
NOTE: MANHOLE FRAMES AND COVER ARE WESTERN IRON AND FOUNDRY CO INC OR EQUAL DESIGNS AS FOLLOWS:  
 FRAME 524-L6  
 FRAME (ALTERNATE): 500 A4  
 COVER 222 34 'NOBBY'

Professional engineering stamp and title block for GEORGETOWN II STORM WATER SEWER IMPROVEMENTS TYPE IA CURB INLET.

DESIGNED BY: CITY  
 DRAWN BY: CITY  
 DATE: 3/0



PLAN  
Scale 1/2" = 1'-0"



SECTION A-A  
Scale 1/2" = 1'-0"

a bars:

a1	5'-8"
a2	5'-6"
a3	5'-3"
a4	5'-0"
a5	4'-8"
a6	4'-6"
a7	4'-3"
a8	4'-1"

b bars:

b	7'-0"
---	-------

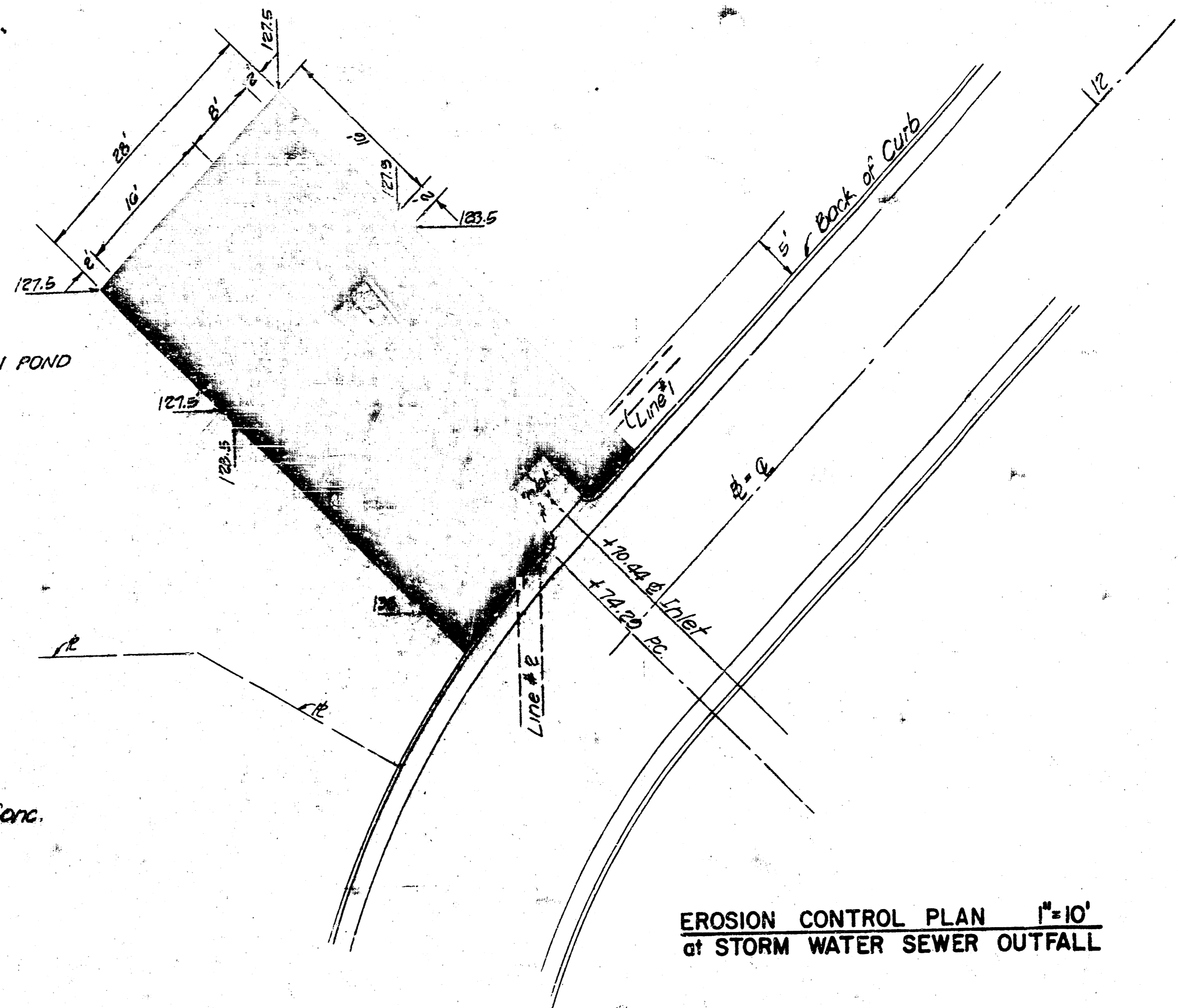
BENDING DIAGRAMS

Bar	Quantity	Length	Shape	Weight
a1	1	7'-0"		4.68
a2	1	7'-4"		4.90
a3	1	7'-9"		5.18
a4	1	8'-2"		5.46
a5	1	8'-6"		5.68
a6	1	9'-0"		6.01
a7	1	9'-5"		6.29
a8	1	11'-1"		7.40
b	7	8'-6"		35.07
c	1	6'-0"		4.01
d	2	7'-0"		10.02
e	1	4'-6"		2.88
f	2	4'-3"		5.68
Total Reinforcing Steel, Pounds				103.33
Total Concrete, Cubic Yards				2.01

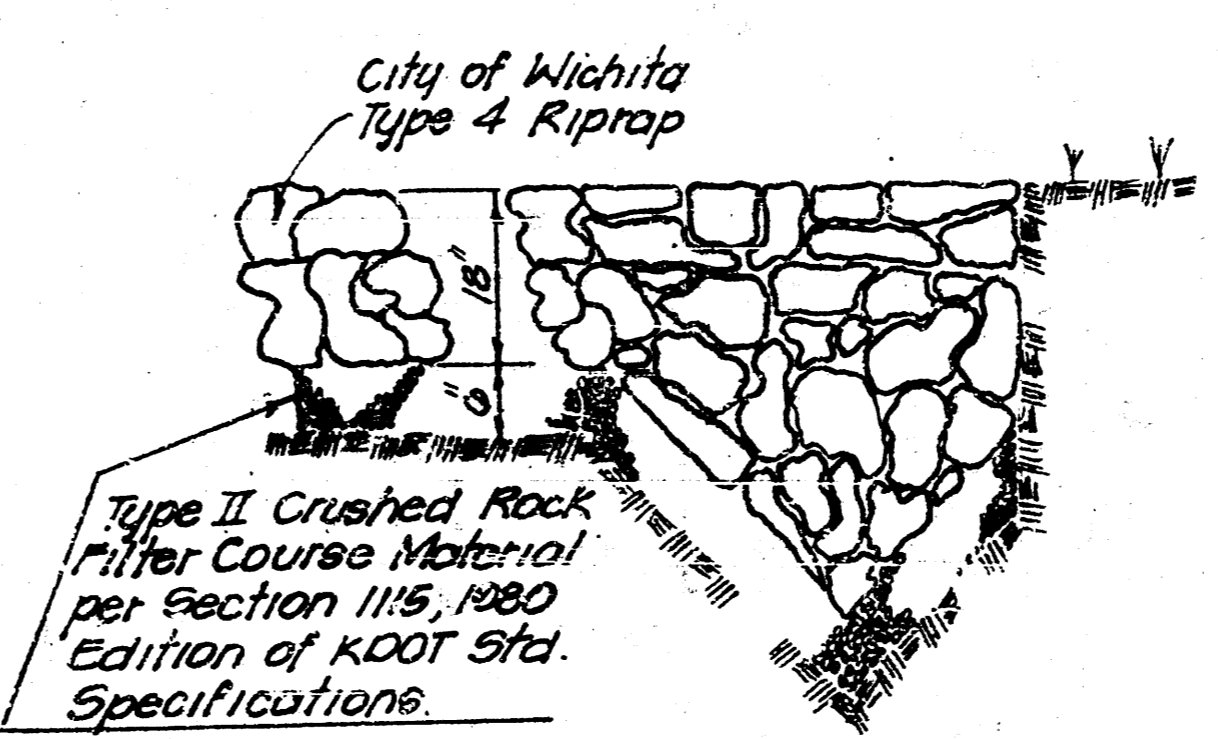
HEADWALL FOR 30" PIPE

NOTES

- 1- All reinforcing steel shall be #4 bars.
- 2- All exposed edges shall have 1/2" bevel.
- 3- All concrete shall be 6-Sack paving mix.
- 4- All bars to have 2" min. clearance to edge of Conc.



EROSION CONTROL PLAN 1" = 10'  
of STORM WATER SEWER OUTFALL



TYPICAL TOE DETAIL  
ALL EDGES OF RIPRAP

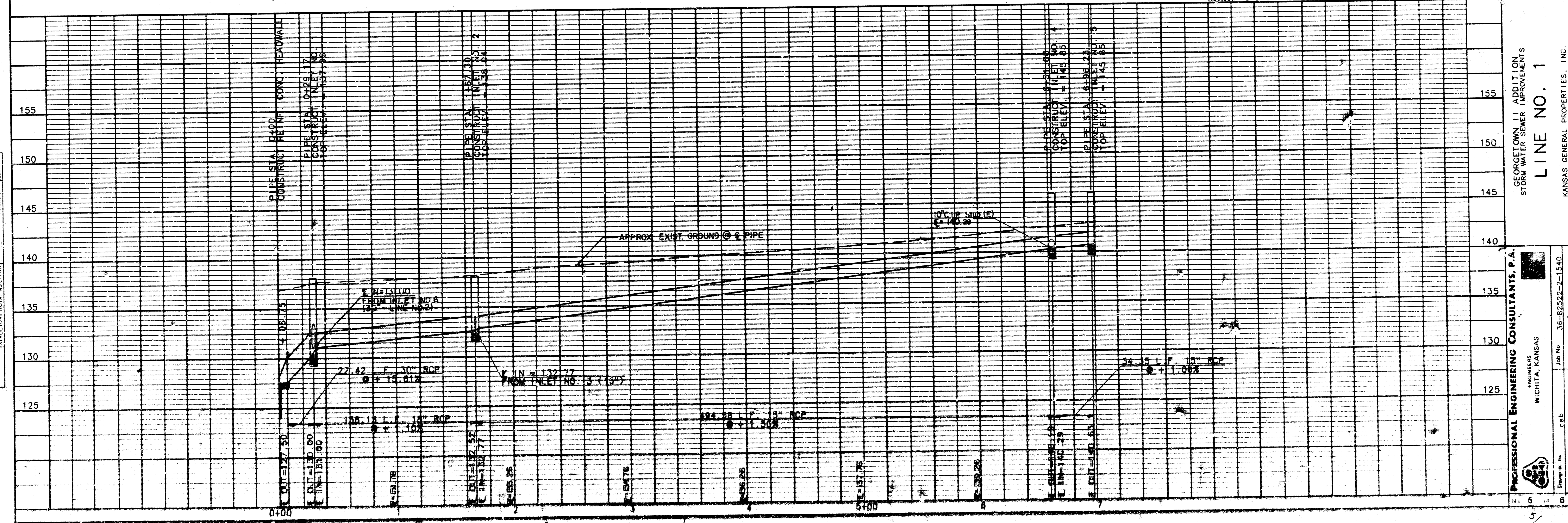
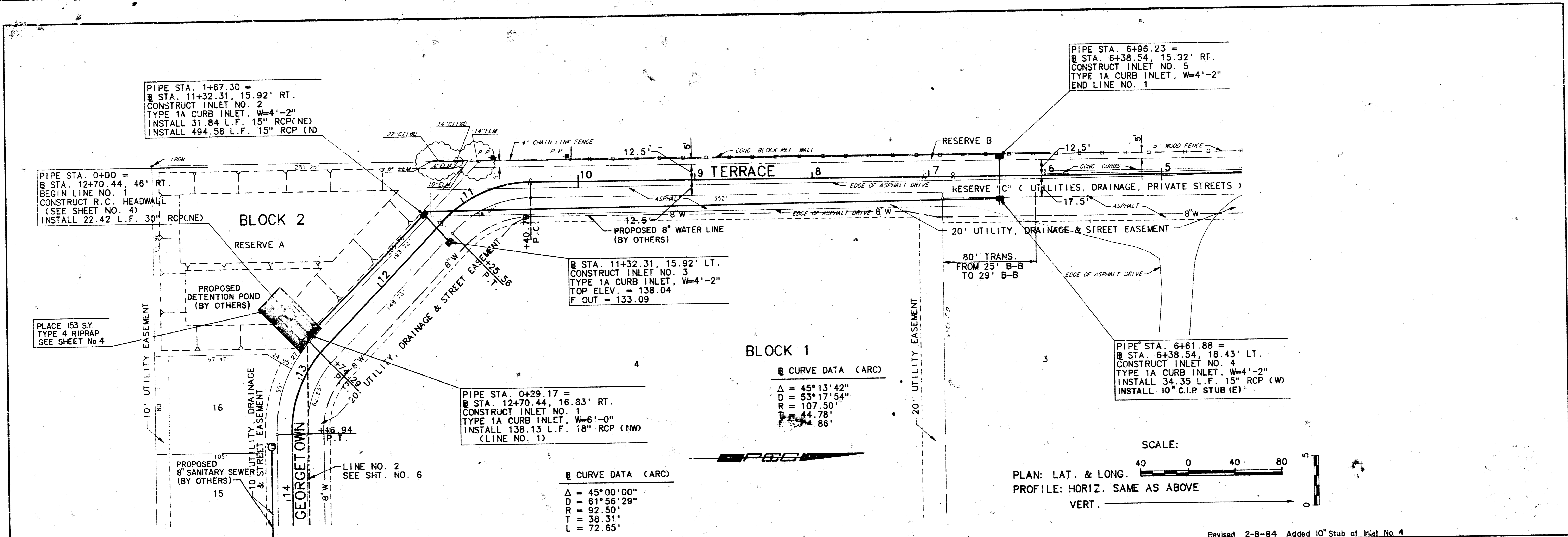
No.	Revision	By	Date

GEORGETOWN II  
STORM WATER SEWER IMPROVEMENTS  
REINFORCED CONCRETE HEADWALL  
& EROSION CONTROL DETAILS  
KANSAS GENERAL PROPERTIES INC.  
PROFESSIONAL ENGINEERING CONSULTANTS, P.A.  
ENGINEERS  
WICHITA, KANSAS

Designed by CSB Checked by CSB  
Drawn by CNK, ES Date DEC. 1988 Job No. 88022

DATE	
BY	
PLAN	REVISIONS
NO.	
NOTE BOOK	NO.
NO.	

DATE	
BY	
PROFILE	REVISIONS
NO.	
NOTE BOOK	NO.
NO.	



PROFESSIONAL ENGINEERING CONSULTANTS, P.A.  
 ENGINEERS  
 WICHITA, KANSAS

GEORGETOWN, I.I. ADDITION  
 STORM WATER SEWER IMPROVEMENTS

LINE NO. 1

KANSAS GENERAL PROPERTIES, INC.

Job No. 36-62522-2-1540  
 Date December 23, 1983

Drawn by C.E.B.  
 Checked by M.C.C.  
 Date

