

| SHEET NO. | TOTAL SHEETS |
|-----------|--------------|
| 1         | 4            |

**PRIVATE STORM WATER SEWER IMPROVEMENTS**  
 AT  
**KGE 1900 E. CENTRAL STORAGE YARD**  
 CITY OF WICHITA PRIVATE PROJECT NO. 1002PPS (607861)

PLANS PREPARED BY  
**PROFESSIONAL ENGINEERING CONSULTANTS, P.A.**  
**ENGINEERS**  
**WICHITA, KANSAS**

APRIL, 2000  
 PEC PROJECT NO. 36-00220-3040

*BOOKED*  
*4/10/01*  
*MCG*  
*D-505*



*RECORD DRAWING*

**GENERAL NOTES**

UNDERGROUND UTILITY SERVICE LINES AND OVERHEAD UTILITY POLE LINES ARE TO BE ADJUSTED AS NECESSARY BY OTHERS PRIOR TO CONSTRUCTION UNLESS THE PLANS SPECIFICALLY CALL FOR THEIR ADJUSTMENT BY THE CONTRACTOR. EXISTING UTILITIES AND THEIR LOCATIONS AS SHOWN ON THE PLANS REPRESENT THE BEST INFORMATION OBTAINABLE FOR DESIGN. LOCATION INFORMATION HAS BEEN OBTAINED FROM THE VARIOUS UTILITY COMPANIES AND IS EITHER FROM COMPANY RECORD DRAWINGS OR COMPANY PROVIDED FIELD LOCATIONS. THE CONTRACTOR WILL BE REQUIRED TO WORK AROUND EXISTING UTILITIES WITHIN THE RIGHT-OF-WAY WHICH DO NOT CONFLICT WITH PROPOSED CONSTRUCTION. CONTRACTOR SHALL SATISFY HIMSELF OF SUBSURFACE CONDITIONS PRIOR TO BIDDING.

RUBBLE FROM THE REMOVAL OF MISCELLANEOUS STRUCTURES SHALL BE DISPOSED OF ON SITES TO BE PROVIDED BY THE CONTRACTOR AND APPROVED AS NOTED.

ALL DISPOSAL SITES MUST BE APPROVED BY THE KANSAS DEPARTMENT OF HEALTH AND ENVIRONMENT. MATERIAL EITHER STOCKPILED OR DISPOSED OF IN A FLOOD PLAIN WOULD REQUIRE A KANSAS STATE BOARD OF AGRICULTURE PERMIT. ANY MATERIAL DUMPED IN WATERS OF THE UNITED STATES OR WETLANDS IS SUBJECT TO U.S. CORPS OF ENGINEERS PERMITTING REGULATIONS. ANY MATERIAL BURIED OR STOCKPILED BEYOND APPROVED CONSTRUCTION LIMITS WOULD REQUIRE ADDITIONAL ARCHEOLOGICAL INVESTIGATIONS UNLESS BURIED IN A PREVIOUSLY APPROVED BORROW LOCATION.

EXCESS EXCAVATED MATERIAL AND EXCESS TOPSOIL SHALL BECOME THE PROPERTY OF THE CONTRACTOR AND SHALL BE REMOVED FROM THE PROJECT SITE.

CONTRACTOR SHALL PROVIDE A MINIMUM FORTY-EIGHT (48) HOUR ADVANCE NOTICE (EXCLUDING WEEKENDS AND HOLIDAYS) PRIOR TO BEGINNING ANY EXCAVATION TO KANSAS ONE-CALL SYSTEM, A UTILITY LOCATION SERVICE, AT (316) 687-2470 TO REQUEST THE FOLLOWING UTILITY COMPANIES TO LOCATE ALL EXISTING LINES WITHIN THE PROJECT AREA: K.G.S. GAS, PEOPLES NATURAL GAS, K.G.E. ELECTRIC, SOUTHWESTERN BELL TELEPHONE, MULTIMEDIA CABLEVISION, CITY OF WICHITA SEWER MAINTENANCE AND CITY OF WICHITA WATER DEPARTMENT.

THE CONTRACTOR SHALL BE RESPONSIBLE FOR PRESERVING PROPERTY IRONS. THE CONTRACTOR WILL BE REQUIRED TO RE-ESTABLISH ANY PROPERTY IRONS WHICH ARE DAMAGED OR DESTROYED BY HIS CONSTRUCTION OPERATIONS. SUCH IRONS SHALL BE RE-ESTABLISHED BY A LICENSED LAND SURVEYOR IN ACCORDANCE WITH STATE LAWS.

THE WATER DEPARTMENT SHALL FIELD LOCATE WATER VALVES ONE TIME DURING CONSTRUCTION WHEN REQUESTED BY THE CONTRACTOR. IT SHALL BE THE CONTRACTOR'S RESPONSIBILITY TO PRESERVE SUCH FIELD LOCATIONS DURING THE CONSTRUCTION PROCESS. WATER VALVE BOXES OR FIRE HYDRANTS DAMAGED DURING CONSTRUCTION SHALL BE REPAIRED BY THE CONTRACTOR AT HIS OWN EXPENSE.

ALL AREAS DISTURBED DURING CONSTRUCTION SHALL BE TEMPORARY SEEDED ACCORDING TO CITY OF WICHITA STANDARDS AND SPECIFICATIONS.

INLET LOCATIONS MAY BE ADJUSTED SLIGHTLY FROM WHERE SHOWN ON THE PLAN TO MINIMIZE CONFLICTS WITH UTILITIES, ETC., WITH PERMISSION OF THE OWNER. CONTRACTOR SHALL PROVIDE AS-BUILT LOCATIONS OF ANY STRUCTURES THAT ARE ADJUSTED IN THE FIELD.

CONTRACTOR SHALL REMOVE SUFFICIENT PAVEMENT AT INLET STRUCTURES TO GRADE FROM EXISTING PAVEMENT ELEVATION TO NEW INLET TOP ELEVATION. VERIFY LIMITS OF REMOVAL AND ACCEPTABLE PAVEMENT SLOPES WITH OWNER.

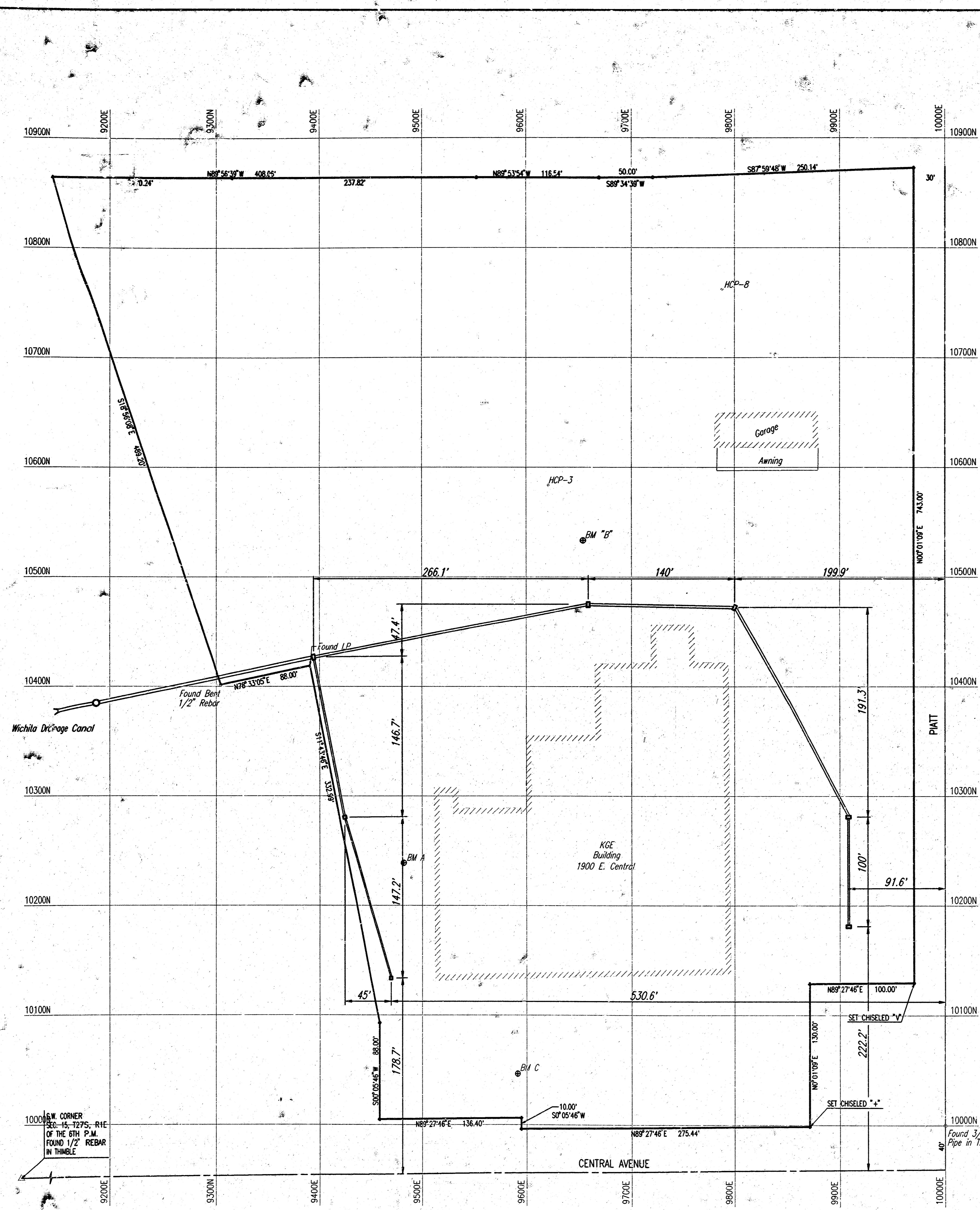
CONTRACTOR SHALL OBTAIN ALL NECESSARY PERMITS PRIOR TO BEGINNING CONSTRUCTION IN HIGHWAY R-0-W.

WITH THE OWNER'S PERMISSION, A GRAVEL OR OTHER PAVING MATERIAL MAY BE USED FOR PATCHING STORM SEWER TRENCHES.

CONTRACTOR SHALL RESTORE THE SITE TO PRE-PROJECT CONDITIONS, EXCEPT AS DIRECTED OTHERWISE BY OWNER. THIS SHALL INCLUDE, BUT NOT BE LIMITED TO, RESETTING FENCES, GUARD POSTS, ETC.

DIMENSIONS TO INLETS SHOWN ON THIS SHEET ARE FOR USE BY THE OFFICE OF CENTRAL INSPECTION ONLY. CONTRACTOR SHALL STAKE PROJECT USING THE COORDINATES GIVEN ON THE PLAN.

CONTRACTOR SHALL TAKE NECESSARY STEPS TO PREVENT SEDIMENT FROM ENTERING THE STORM SEWER DURING CONSTRUCTION. INLET PROTECTION MAY BE REMOVED ONCE THE PAVEMENT AT INLETS HAS BEEN REPLACED.



SCALE: 1"=50'

- B.M.: CITY OF WICHITA BENCH MARK IN SOUTHEAST CORNER OF NORTH BRIDGE OF WICHITA DRAINAGE CANAL AND CENTRAL AVENUE. ELEV.=1303.30 M.S.L.
- B.M. "A": CHISELED "d" ON N.W. CORNER OF CONCRETE PAD FOR METAL STAIRWAY ON W. SIDE MAIN KGE BUILDING, S. OF RADIO TOWER. ELEV.=1299.53 M.S.L.
- B.M. "B": S.E. CORNER OF CONCRETE PAD FOR FUEL TANKS, N. OF MAIN KGE BUILDING. ELEV.=1300.60 M.S.L.
- B.M. "C": CHISELED "d" ON S. EDGE OF CONCRETE PAD FOR FLAG POLE ON S. SIDE KGE BUILDING. ELEV.=1299.14 M.S.L.

- HCP-1: 3/4" Box 10000 N, 10000 E
  1. 39.50' S. to E. Intersection of Central and Platt
  2. 23.00' W. to Pk Nail and Washer in E. Face of Light Pole
  3. 14.80' E.N.E. to S.E. Corner of Area Inlet
- HCP-2: 1200 Spike at @ Intersection of Platt and Elm 10585.06 N, 10000.00 E
  1. 33.50' S.S.E. to N.E. Corner Curb Inlet
  2. 34.30' N.E. to S.W. Corner Curb Inlet
  3. 29.00' N.E. to Pk Nail and Washer in S. Face of Power Pole
- HCP-3: Pk Nail and Washer 20'± N.W. of Fuel Tanks 10583.74 N, 9621.91 E
  1. 19.10' S.E. to N.W. Corner Steel Retaining Wall of Fuel Tanks
  2. 31.30' S. to Pk Nail and Washer in N. Face of Power Pole
  3. 36.80' N.N.W. to S.E. Retaining Wall of Power Pole Rack (E. Set)
- HCP-4: Pk Nail and Washer at N.W. Corner Fenced Parking Lot 10551.60 N, 9407.50 E
  1. 22.80' E. to 6' Chain Link Fence 2nd N. and S. Fence from the W.
  2. 16.50' W. to E. Edge of Concrete Slab
  3. 174.60' N. to P.I. Fence (N. and E.)
- HCP-6: 1200 Spike 95'± N. of N.W. Corner of Auto Zone 9892.26 N, 9520.00 E
  1. 17.90' N. to S. Back of Curb on Central
  2. 12.80' S. to N. Back of Curb Parking Lot of Auto Zone
  3. 125.10' E. to @ Minnesota Street
- HCP-8: 10762.09 N, 9787.89 E

APPROVED AS NOTED  
 BY CITY ENGINEER OF WICHITA

SANITARY SEWERS \_\_\_\_\_  
 STORM SEWERS VRH 4/17/00  
 DRIVEWAY APPROACHES \_\_\_\_\_  
 WATER MAINS \_\_\_\_\_  
 PAVING \_\_\_\_\_

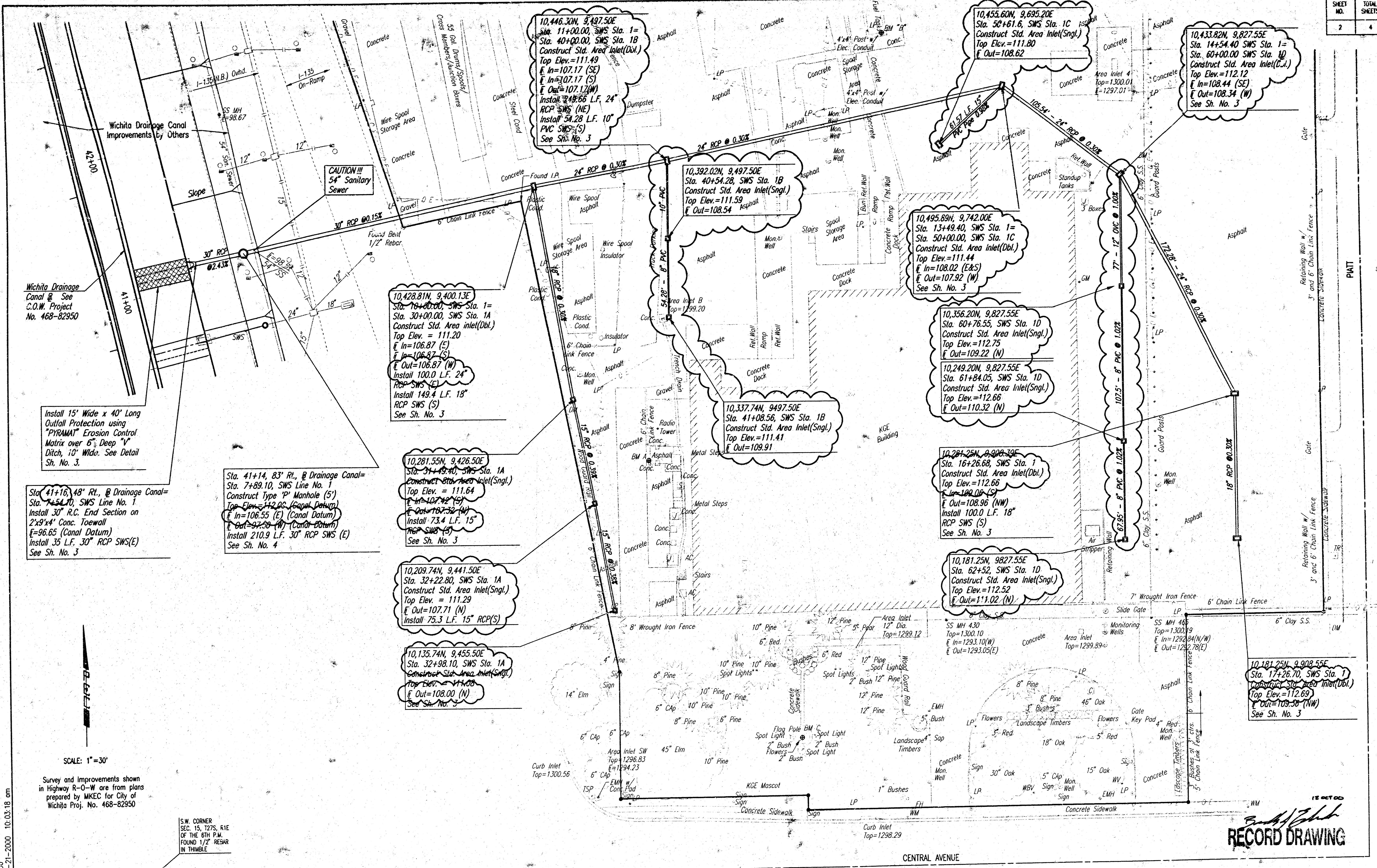
**NOTE TO CONTRACTOR**

INSPECTION AND TESTING FOR THIS PROJECT IS TO BE PROVIDED BY A LICENSED CONSULTING ENGINEERING FIRM CONTRACTED BY THE CONTRACTOR. SAID INSPECTION TO BE IN ACCORDANCE WITH THE CITY OF WICHITA STANDARD CONSTRUCTION ENGINEERING PRACTICES AND CERTIFIED BY A LICENSED PROFESSIONAL ENGINEER. NO WORK SHALL BE PERFORMED IN DEDICATED EASEMENTS OR PUBLIC RIGHT-OF-WAY BY THE CONTRACTOR UNTIL SUCH INSPECTION IS ARRANGED FOR AND REQUIRED BONUS HAVE BEEN SUBMITTED TO AND APPROVED BY THE CITY. NOR SHALL ANY WORK BE COMMENCED IN DEDICATED EASEMENTS OR PUBLIC RIGHT-OF-WAY WITHOUT WRITTEN AUTHORIZATION BY THE CITY ENGINEER. IMPROVEMENTS PERFORMED UNDER THIS PROJECT SHALL NOT BE ACCEPTED BY THE CITY UNTIL ALL APPLICABLE DOCUMENTATION HAS BEEN SUBMITTED TO THE CITY ENGINEER. THIS MAY INCLUDE: AS-BUILT DRAWINGS, INSPECTION LOGS, TEST DOCUMENTATION, TV TAPES, AND A CERTIFICATE OF COMPLETION. THE ABOVE SHALL BE PERFORMED BY THE CONSULTING FIRM CONTRACTED TO INSPECT THIS PROJECT.

DESIGN: DBC OPER: BB SCALE: 1"=50.00  
 DATE: 1999/03/17 3:56 pm design title 04-17-2000 10:33:58 am

18-B-2-12

| SHEET NO. | TOTAL SHEETS |
|-----------|--------------|
| 2         | 4            |



SCALE: 1"=30'

Survey and Improvements shown in Highway R-0-W are from plans prepared by MKEC for City of Wichita Proj. No. 468-82950

Note:  
 The City's Contractor shall be responsible for construction of the improvements from Sta. 7+54.1 to Sta. 9+00 ±.  
 Both Contractors shall coordinate their work and shall verify the horizontal and vertical location of the proposed 30" SWS at Sta. 9+00 before excavating the storm sewer trench.  
 Any difference in vertical elevation due to different project BM's shall be reported to the Engineer so that any necessary plan changes can be made.

RECORD DRAWING

KGE STORAGE YARD

**SWS PLAN**  
 SWS LINE NO. 1 & 1A

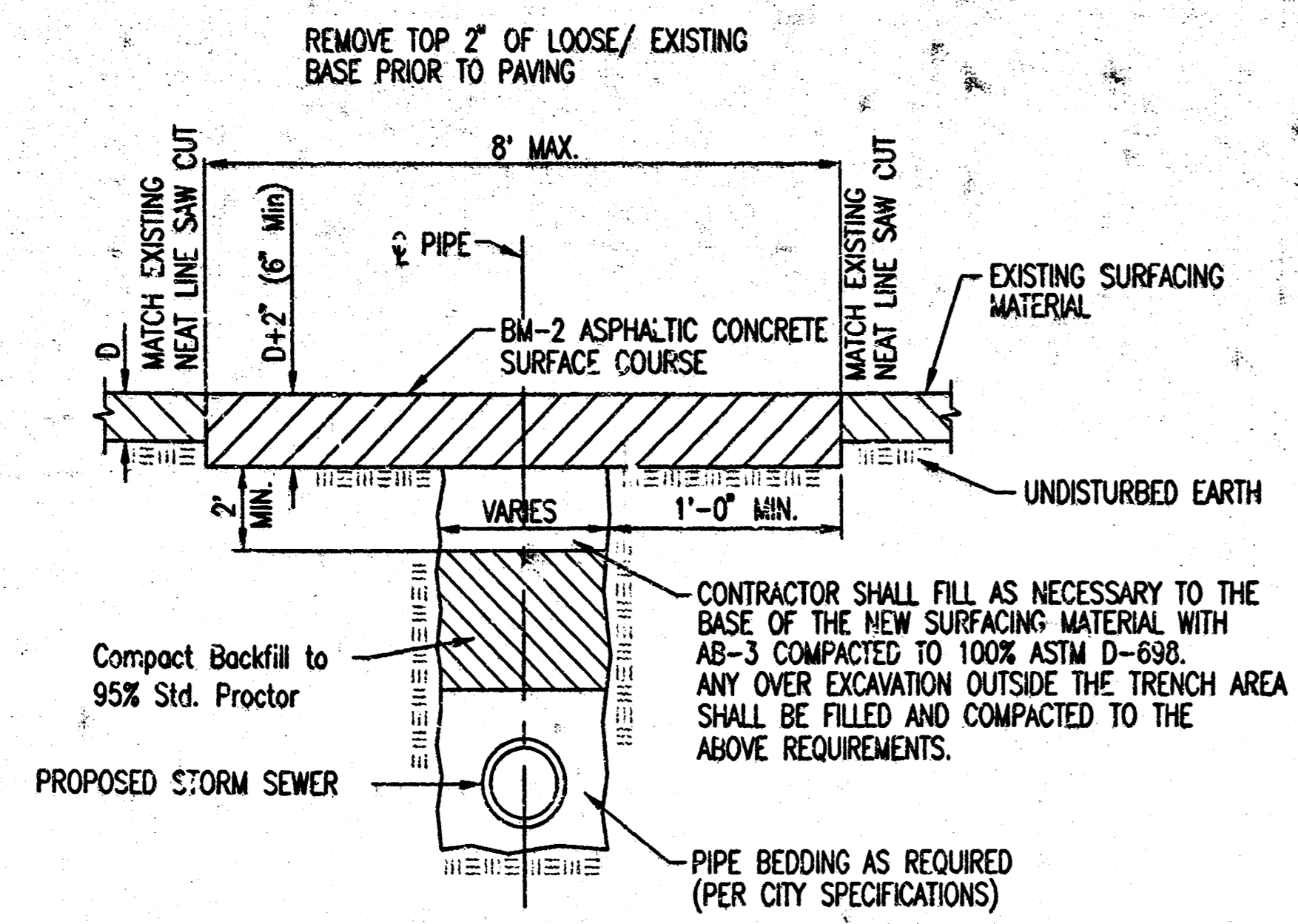
Professional Engineering Consultants, P.A.  
 303 S. TOPICKA • WICHITA, KANSAS 67202  
 316-262-2091 • FAX 316-262-3003

|                 |                 |
|-----------------|-----------------|
| Designed by DRC | Checked by      |
| Drawn by DRC    | Date APR., 2000 |

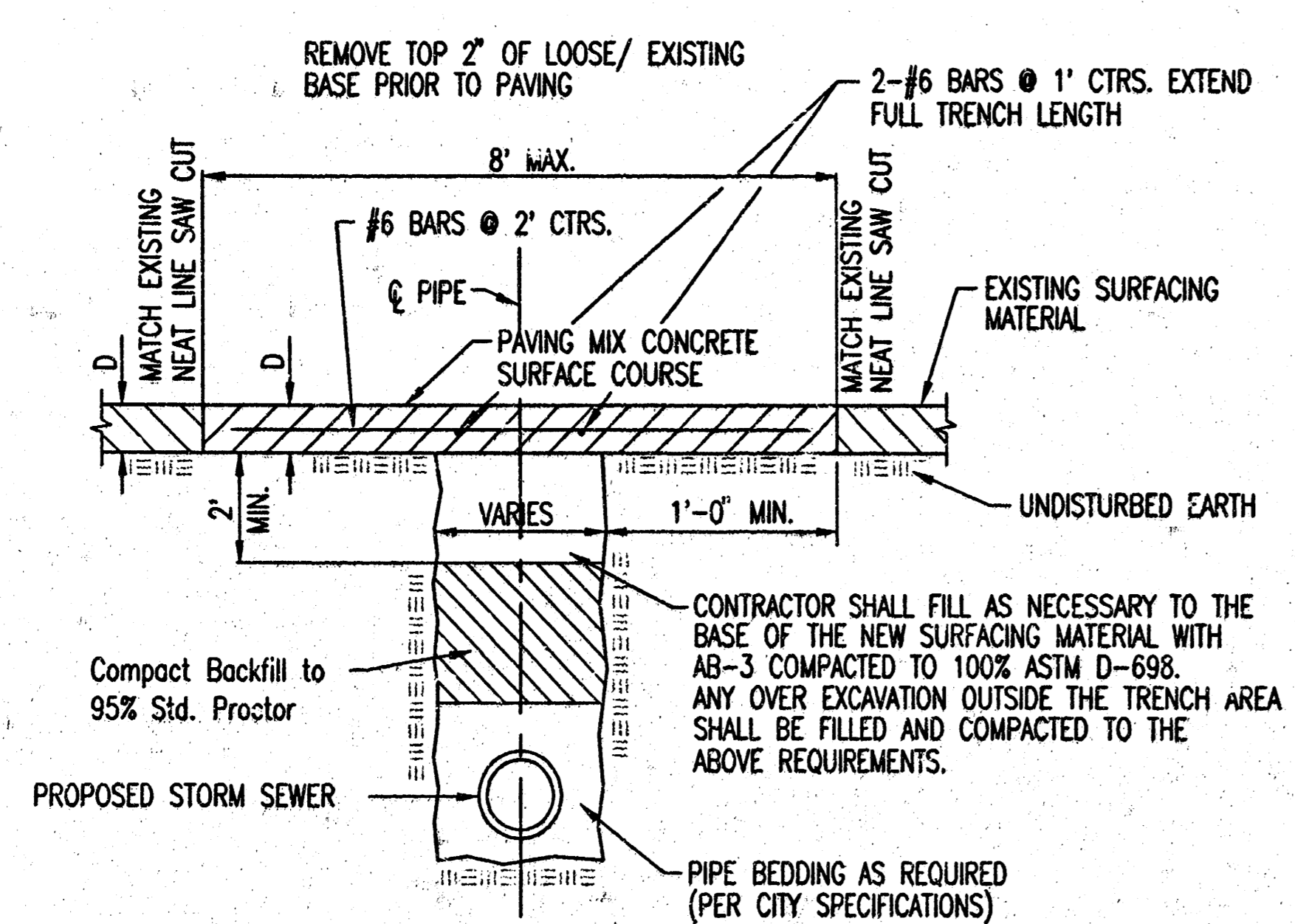
Job No. 00220

DSNR, DAR, OPR, SAD, SCALE: 1"=30.00  
 01/2000/00220/sws design/VASBUILT 07-21-2000 10:03:18 am

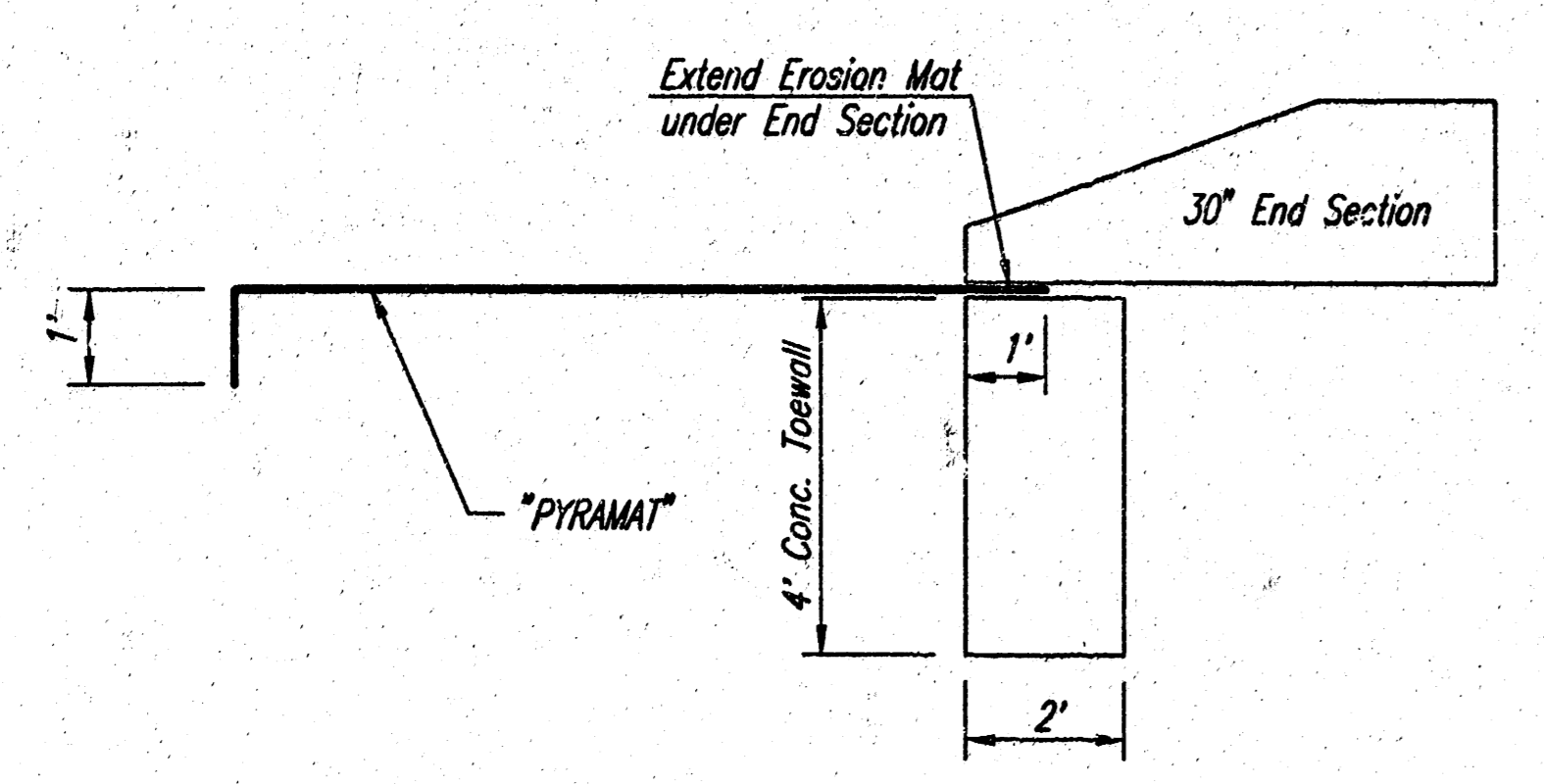
|           |              |
|-----------|--------------|
| SHEET NO. | TOTAL SHEETS |
| 3         | 4            |



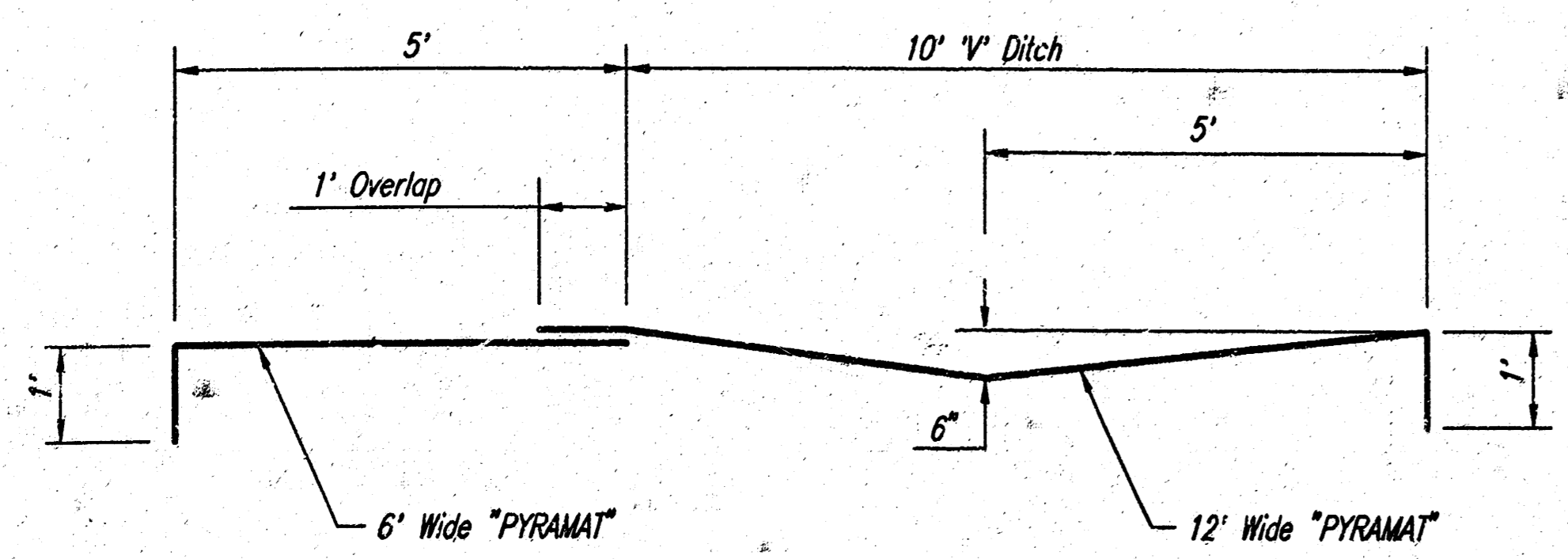
PAVEMENT REMOVAL AND REPLACEMENT DETAIL  
ASPHALT PAVEMENT



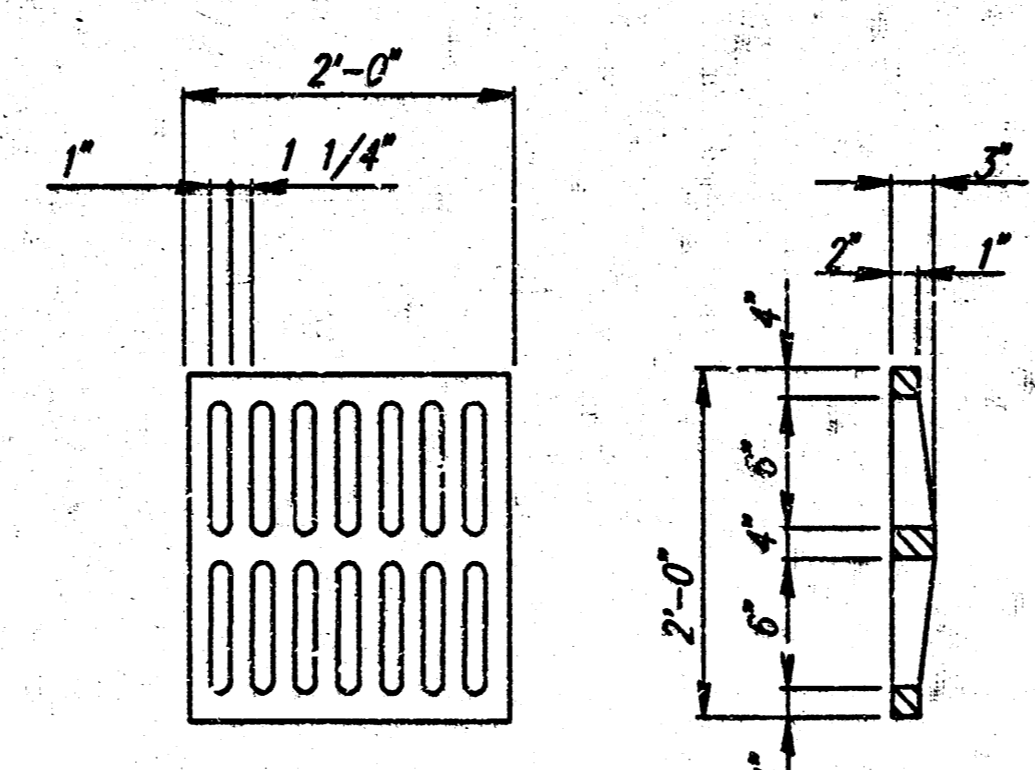
PAVEMENT REMOVAL AND REPLACEMENT DETAIL  
CONCRETE PAVEMENT



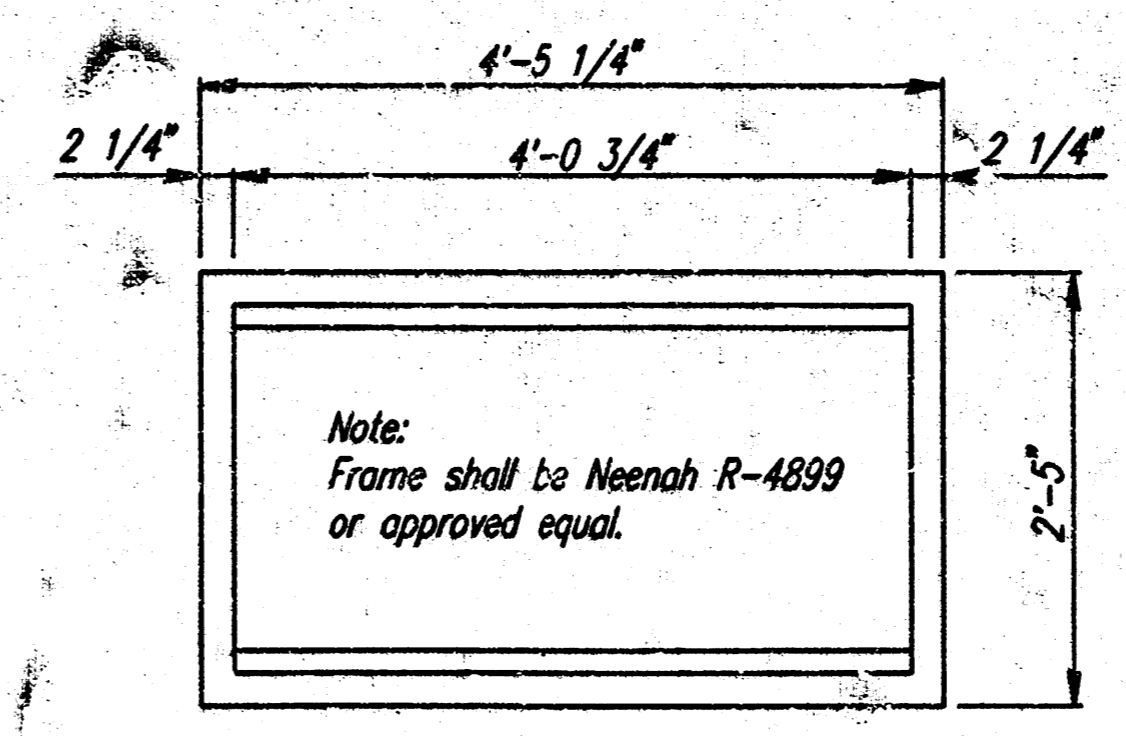
END SECTION CONCRETE TOEWALL  
Note: The end section and toewall shall be constructed at the beginning of the 3:1 bank slope as shown in the City Project plans



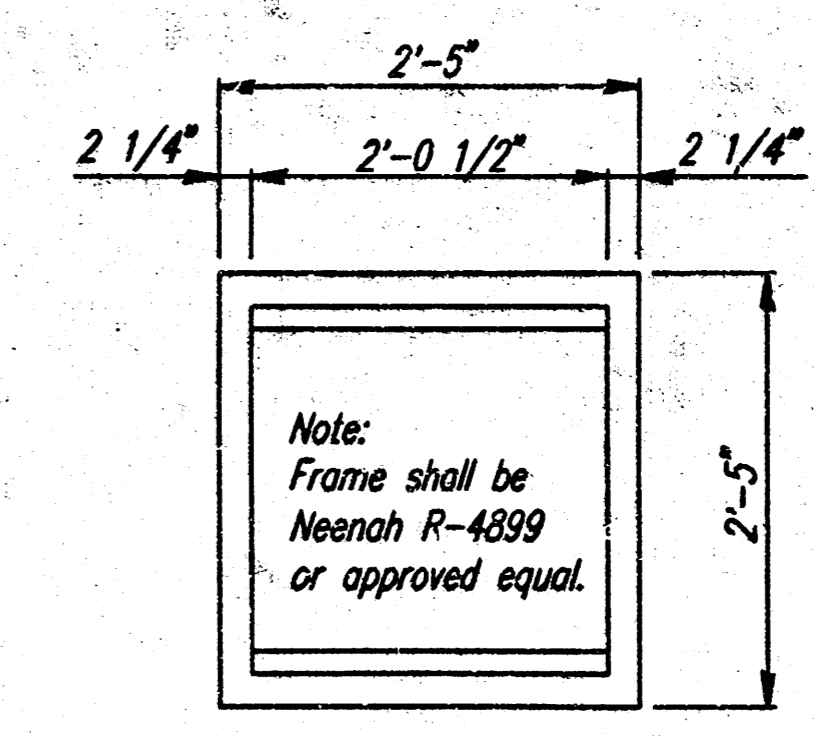
OUTFALL PROTECTION DITCH



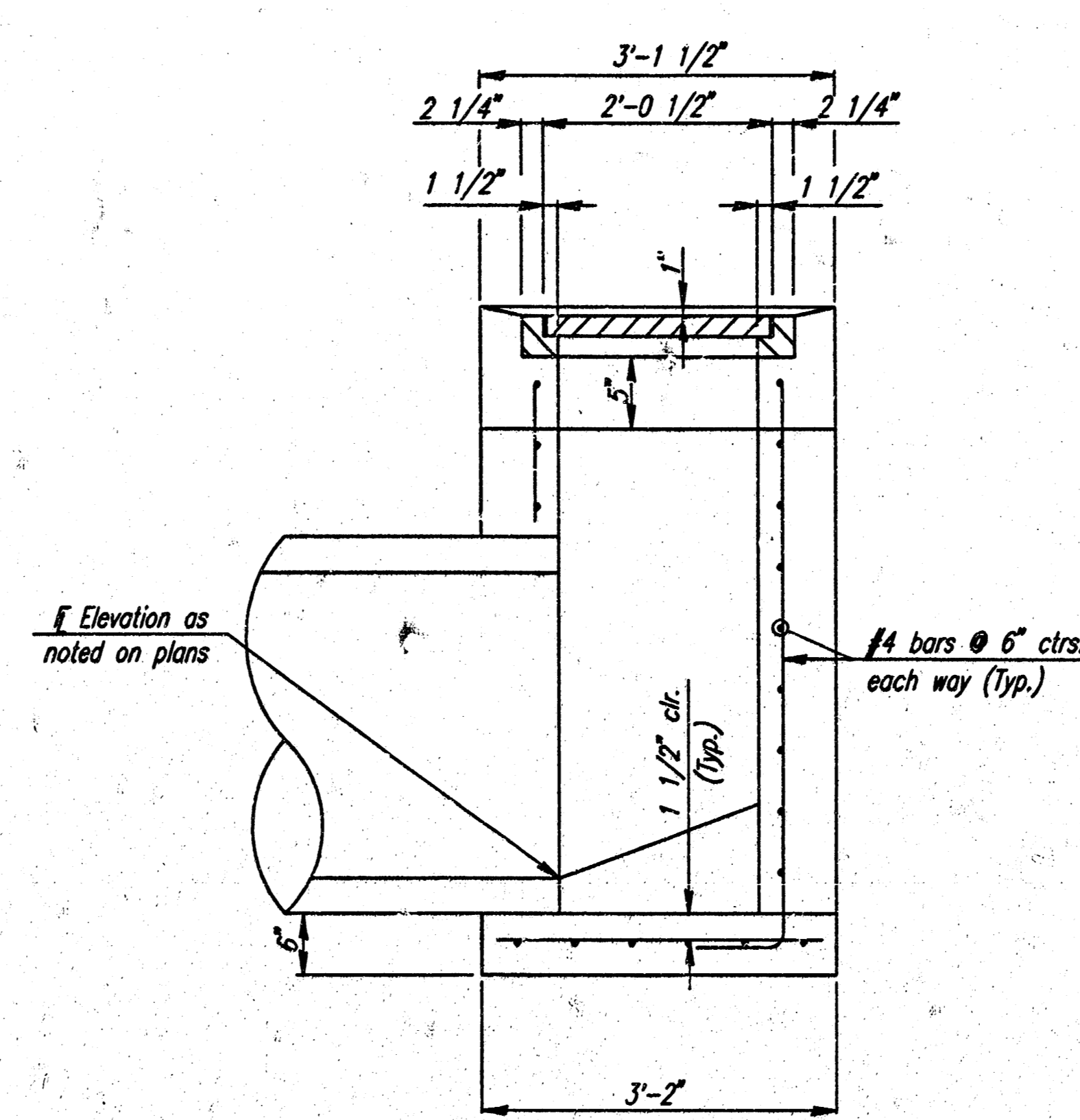
GRATE DETAIL  
(Wt.=190 lbs.)  
Note: Grate shall be Neenah R-4826 or approved equal.



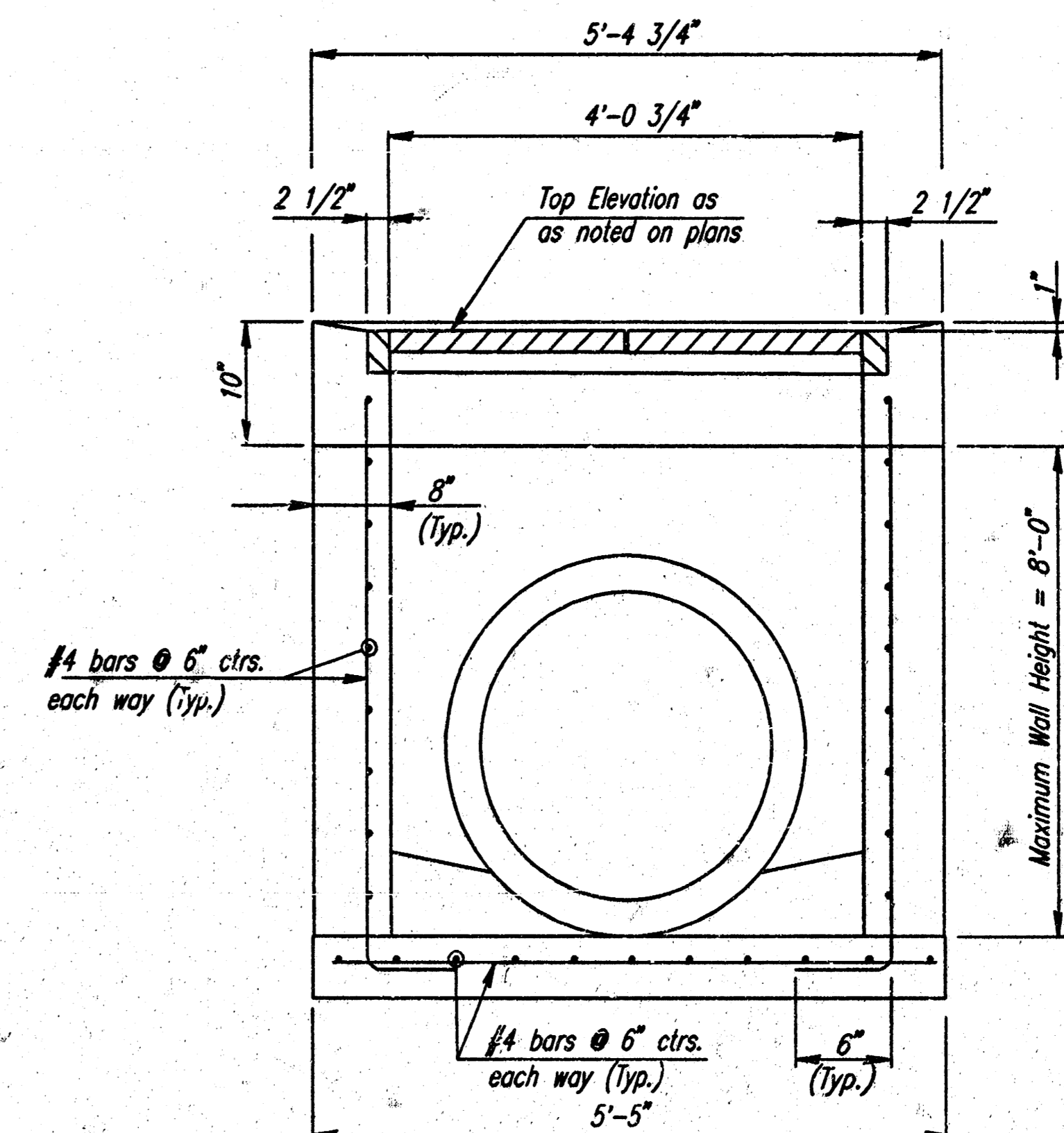
FRAME DETAIL (DOUBLE)  
(Wt.=40 lbs.)  
Note: Frame to mate with 2 Neenah R-4826 Grates or approved equal.



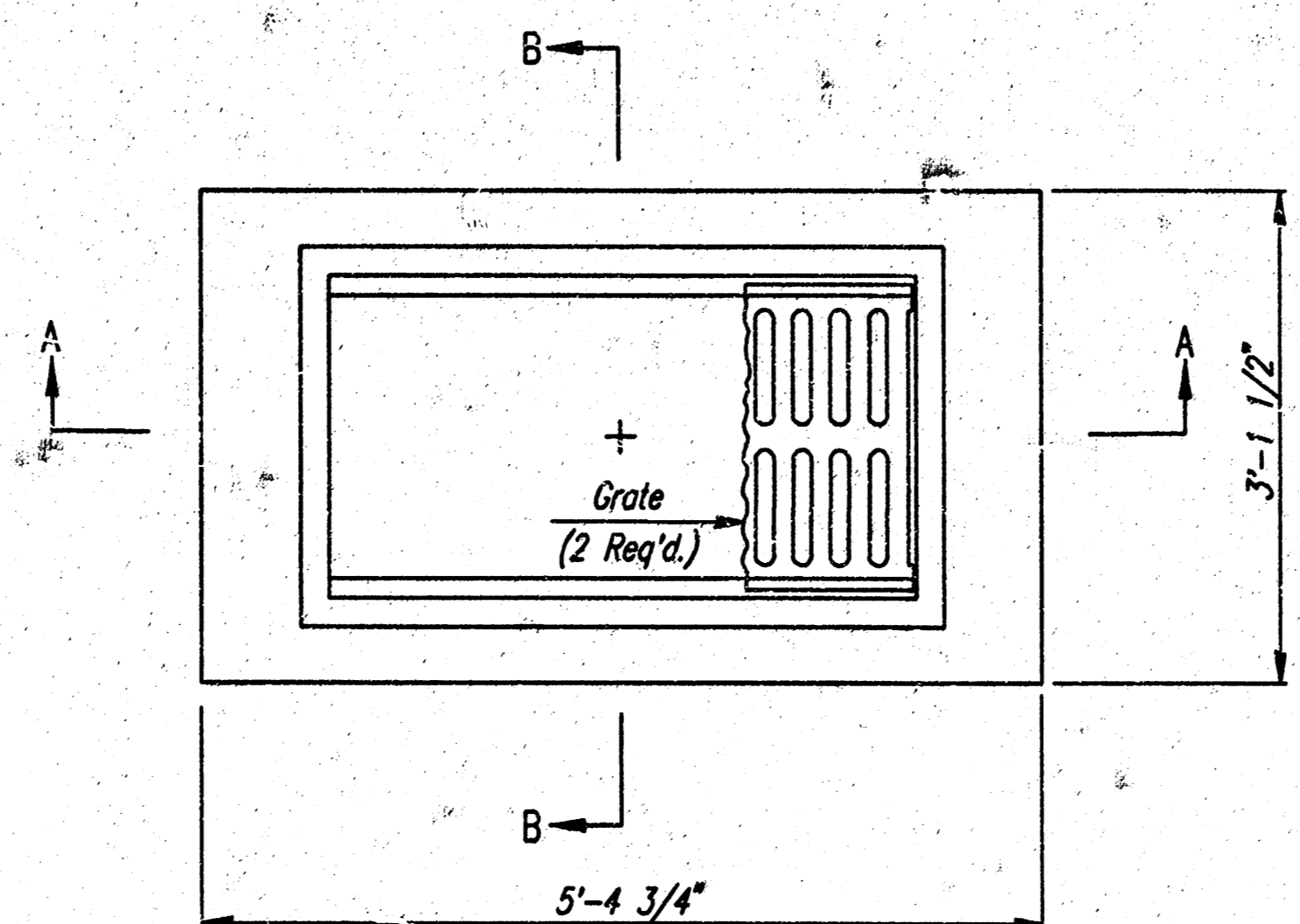
FRAME DETAIL (SINGLE)  
(Wt.=220 lbs.)  
Note: Frame to mate with 1 Neenah R-4826 Grate or approved equal.



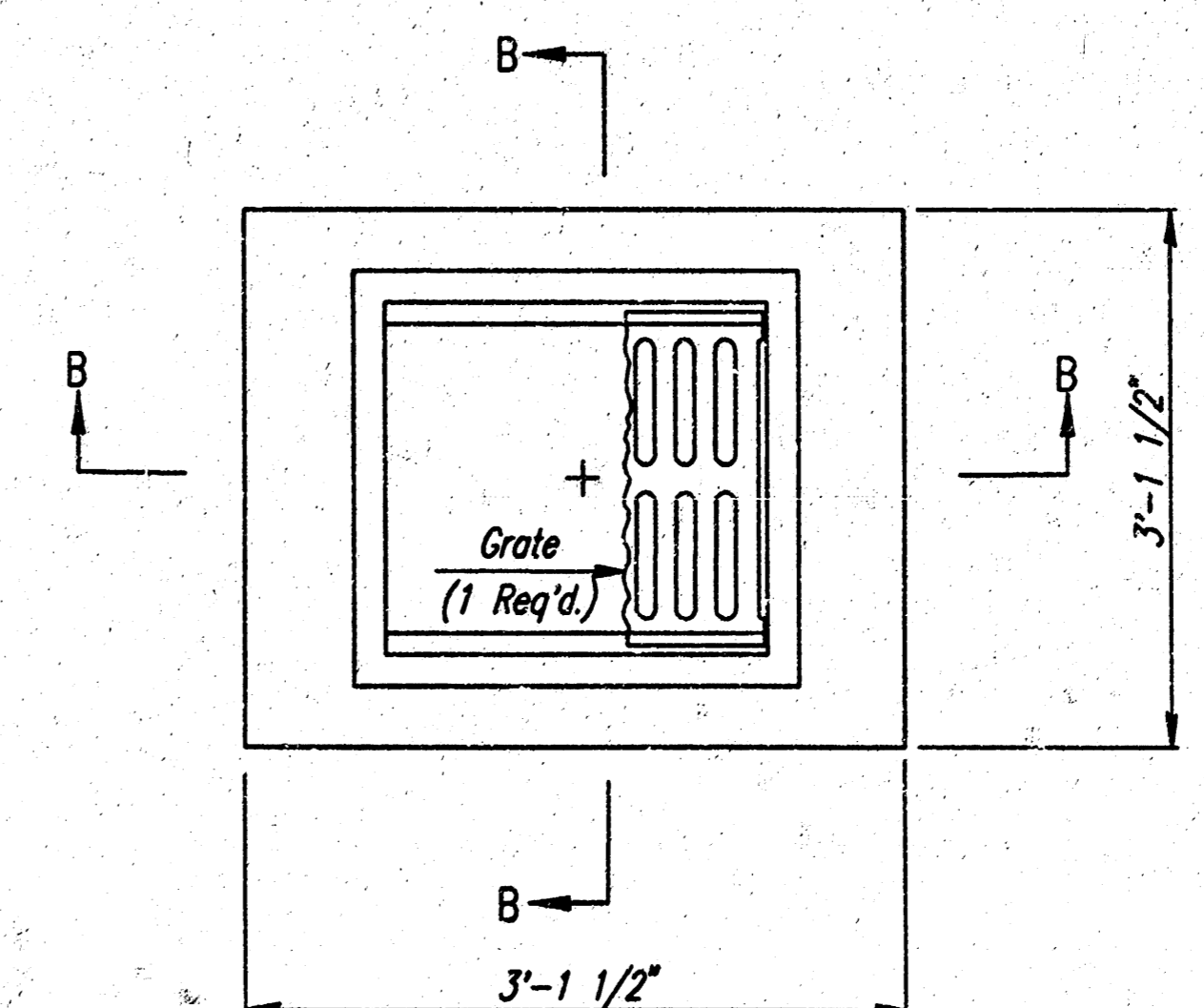
SECTION B-B



SECTION A-A



PLAN (DOUBLE)



PLAN (SINGLE)

STANDARD AREA INLET  
(SINGLE & DOUBLE)

12 OCT 00  
*[Signature]*  
RECORD DRAWING

GENERAL NOTES

- CONCRETE SHALL HAVE A MINIMUM 28 DAY COMPRESSIVE STRENGTH OF 4000 PSI. ALL PIPES SHALL BE FLUSH CUT PRIOR TO BEING CAST INTO WALLS.
- REINFORCING STEEL SHALL BE GRADE 60, A.S.T.M. A615. ALL DIMENSIONS RELATIVE TO PLACEMENT OF REINFORCING ARE TO THE CENTERLINE OF BARS UNLESS OTHERWISE NOTED.
- INLET CASTINGS SHALL BE MANUFACTURED USING DUCTILE IRON CONFORMING TO ASTM A536-80 GRADE 65-45-12. DIMENSIONS AND WEIGHTS SHOWN ON THE DETAILED DRAWINGS SHALL BE CONSIDERED AS MINIMUM REQUIREMENTS AND ANY DEVIATIONS FROM THE DIMENSIONS SHOWN MUST BE SPECIFICALLY APPROVED. THE FINISHED CASTINGS SHALL BE OF UNIFORM QUALITY, FREE FROM BLOWHOLES, POROSITY, HARD SPOTS, SHRINKAGE DISTORTIONS OR OTHER DEFECTS.
- INLET FLOOR SHALL BE SHAPED WITH UNREINFORCED CONCRETE (8 SACK SAND MIX) TO CREATE FLOW CHANNELS AND TO INCREASE HYDRAULIC EFFICIENCY SUCH THAT THE INLET WILL BE SELF CLEANING BETWEEN ALL INLET AND/OR OUTLET PIPES.
- PIPES ENTERING EXISTING STRUCTURE SHALL BE CENTERED ON INSIDE FACE OF WALL.
- ALL EXPOSED STRUCTURAL STEEL SHALL BE PAINTED WITH A COAT OF INORGANIC ZINC PRIMER AND THEN WITH A TOP COAT OF OR A FIELD COAT OF ORGANIC ZINC, EACH COAT TO BE 3 TO 4 MILS. STRUCTURAL STEEL USED TO FABRICATE THE SPECIAL AREA INLET FRAME SHALL COMPLY WITH A.S.T.M. A36. WELDING SHALL CONFORM TO THE STRUCTURAL WELDING CODE A.W.S. D1.1-88.

KGE STORAGE YARD

MISCELLANEOUS DETAILS

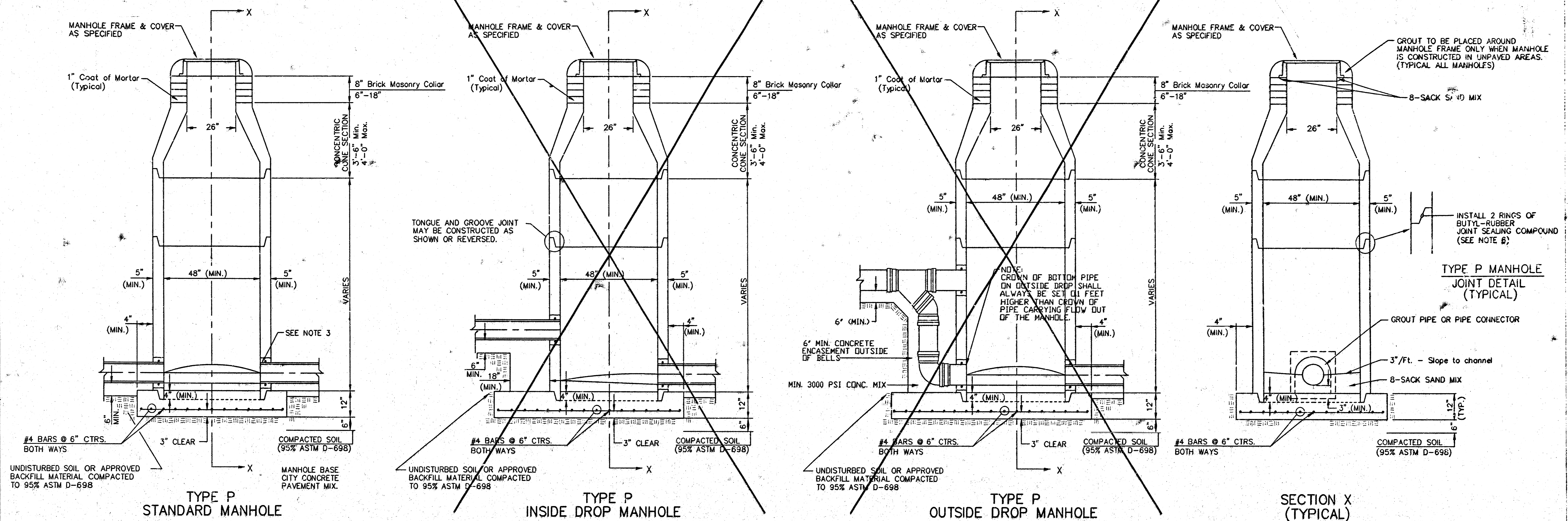
Professional Engineering Consultants, P.A.  
303 S. TOPEKA • WICHITA, KANSAS 67202  
316-262-2691 • FAX 316-262-3003

|             |     |            |            |
|-------------|-----|------------|------------|
| Designed by | DRC | Checked by |            |
| Drawn by    | DRC | Date       | APR., 2000 |
|             |     | Job No.    | 00220      |

DSNR: DAR OPER. KER SCALE: 1"=1.00  
0-11999\99372\sws design\DETAILS 04-14-2000 03:16:40 pm

|           |              |
|-----------|--------------|
| SHEET NO. | TOTAL SHEETS |
| 4         | 4            |

# SEWER APPURTENANCES DETAILS



UNDISTURBED SOIL OR APPROVED BACKFILL MATERIAL COMPACTED TO 95% ASTM D-698

**TYPE P STANDARD MANHOLE**

UNDISTURBED SOIL OR APPROVED BACKFILL MATERIAL COMPACTED TO 95% ASTM D-698

**TYPE P INSIDE DROP MANHOLE**

UNDISTURBED SOIL OR APPROVED BACKFILL MATERIAL COMPACTED TO 95% ASTM D-698

**TYPE P OUTSIDE DROP MANHOLE**

UNDISTURBED SOIL OR APPROVED BACKFILL MATERIAL COMPACTED TO 95% ASTM D-698

**SECTION X (TYPICAL)**

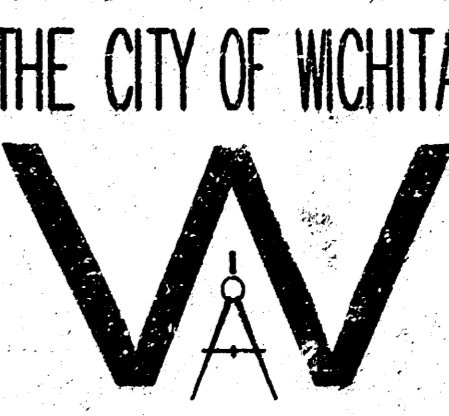
**GENERAL NOTES**  
**PRECAST MANHOLE NOTES**

- ALL PRECAST CONCRETE MANHOLE SECTIONS SHALL CONFORM TO THE LATEST REVISIONS OF A.S.T.M. C478 AS MODIFIED BY THE SPECIFICATIONS.
- NON-SHRINK GROUT SHALL BE NON-METALLIC TYPE.
- APPROVED FLEXIBLE WATERSTOP GASKETS SHALL BE INSTALLED TO JOIN THE SEWER TO THE MANHOLE WALL WHEN A.B.S. COMPOSITE PIPE OR P.V.C. PIPE IS USED. FOR OTHER TYPES OF PIPE THE SEWER SHALL BE GROUTED IN PLACE WITH NON-SHRINK GROUT. THE SEWER PIPE SHALL BE SUPPORTED WITH CONCRETE ENCASUREMENT A MINIMUM OF 3 FEET FROM THE MANHOLE WALL AND TO THE FIRST JOINT FOR V.G.P. SUCH THAT THE JOINT REMAINS FLEXIBLE.
- ALL INSIDE SURFACES OF THE CONCRETE MANHOLE WHICH WOULD BE EXPOSED TO SEWER GAS SHALL BE COATED WITH 2 COATS TNEEC SERIES 66-H-BUILD EPOXOLINE, DRY THICKNESS OF 8 MILS (MIN.).
- EXTERIOR MANHOLE WALLS SHALL BE COATED WITH 1 COAT MOBILARMA 633 BITUMINOUS COATING.
- JOINT SEALING COMPOUND SHALL BE WENT SEAL NO. 2 OR APPROVED EQUAL.
- PRECAST MANHOLES SHALL BE SET AT LEAST 4 INCHES INTO THE MANHOLE BASE.
- TOP OF MANHOLE FLOOR SLAB SHALL BE AT LEAST 3 INCHES BELOW THE FLOW LINE OF THE OUTLET PIPE TO INSURE SUFFICIENT MINIMUM THICKNESS OF SHAPED INVERT.
- LIFTING HOLES SHALL BE FILLED WITH NON-SHRINK GROUT AND THE INTERIOR SURFACE COATED AS SPECIFIED.
- MORTAR USED IN MASONRY CONSTRUCTION SHALL CONTAIN 8 SACKS OF CEMENT PER CUBIC YARD. CONCRETE USED IN MANHOLE BASES SHALL CONFORM TO THE REQUIREMENTS OF CONCRETE FOR CONCRETE PAVEMENT CONSTRUCTION AS SPECIFIED IN THE CITY STANDARD PAVING SPECIFICATIONS USING CITY CONCRETE PAVEMENT MIX WITHOUT AIR ENTRAINING ADMIXTURE. MORTAR SHALL BE PLACED AROUND THE MANHOLE RING AS SHOWN ON THE DRAWINGS WHEN MANHOLES ARE CONSTRUCTED IN UNPAVED AREAS. MANHOLES CONSTRUCTED WHERE PIPE SIZES ARE SMALLER THAN 24" SHALL HAVE AN INSIDE DIAMETER OF 4". MANHOLES CONSTRUCTED WHERE PIPE SIZES ARE 24" OR LARGER SHALL HAVE AN INSIDE DIAMETER OF 5". COMPLETED MANHOLE SHALL BE WITHOUT LEAKS AND WATER TIGHT.

- REINFORCING STEEL SHALL BE INSTALLED IN THE MANHOLE BASES AND SHALL CONSIST OF NO. 4 BARS PLACED ON 6" CENTERS IN BOTH DIRECTIONS. THE MANHOLE BASE REINFORCEMENT SHALL BE PLACED AT LEAST 3" ABOVE THE BOTTOM OF THE MANHOLE BASE. ALL COSTS FOR FURNISHING AND INSTALLING REINFORCING STEEL SHALL BE INCLUDED IN THE UNIT PRICE BID FOR THE MANHOLE.
- OPENINGS SHALL BE CUT INTO THE MANHOLE WALL WHEN OUTSIDE DROPS ARE CONSTRUCTED ON EXISTING MANHOLES. SUCH OPENINGS CUT INTO EXISTING MANHOLES SHALL BE AS SMALL AS PRACTICAL TO FACILITATE INSTALLING AND GROUTING THE NEW PIPE IN PLACE. WATERSTOP GASKETS SHALL BE USED WITH P.V.C. AND A.B.S. COMPOSITE PIPE. THE NEW PIPE SHALL BE GROUTED INTO THE OPENING USING AN APPROVED NONSHRINK GROUT FOR THE FULL MANHOLE WALL THICKNESS. THE EXTERIOR OF THE COMPLETED CONNECTION SHALL BE SEALED WITH AN APPROVED BITUMINOUS COATING SUCH THAT THE CONNECTION WILL BE WATER TIGHT. FLOOR OF MANHOLE SHALL BE MODIFIED TO FORM NEW FLOW CHANNEL FOR THE NEW CONNECTION AS INDICATED BY THE DRAWING. THIS WORK, INCLUDING MODIFICATION OF MANHOLE FLOOR, SHALL BE PAID FOR AT THE UNIT PRICE BID FOR OUTSIDE DROP STACK CONSTRUCTED ON EXISTING MANHOLE.
- THE FLOORS OF ALL MANHOLES SHALL BE SHAPED WITH FLOW CHANNELS SUCH THAT THE MANHOLES WILL BE SELF CLEANING AND FREE OF AREAS WHERE SOLIDS COULD BE DEPOSITED AS SEWAGE FLOWS THROUGH THE MANHOLE FROM ALL INLET PIPES TO THE OUTLET PIPE. FLOW CHANNELS SHALL BE FORMED TO MATCH THE BOTTOM HALVES OF THE INFLOWING PIPES AND THE OUTFLOWING PIPE AS SHOWN BY THE DRAWINGS EXCEPT FOR INSIDE DROP MANHOLES. FLOW CHANNELS FOR INSIDE DROP MANHOLES SHALL BE CONSTRUCTED AS INDICATED BY THE DRAWING. MANHOLE FLOORS SHALL HAVE SLOPES OF 3 INCHES PER FOOT IN THE AREAS OUTSIDE OF THE FLOW CHANNELS SLOPED TOWARD THE FLOW CHANNELS. PIPES LAID THROUGH MANHOLES SHALL HAVE THE TOP HALF REMOVED TO NEAT LINES FOR THE FULL INSIDE DIAMETER OF THE MANHOLE. MANHOLE FLOORS SHALL THEN BE SHAPED AROUND THE BOTTOM HALF OF THE PIPE WHICH FORMS THE FLOW CHANNEL.
- PIPES INSTALLED WITHIN THE EXCAVATION MADE FOR THE MANHOLE SHALL BE CRADLED WITH CONCRETE TO THE LIMITS OF THE MANHOLE EXCAVATION. WHEN S-LAY PIPE IS USED, THE CRADLE SHALL EXTEND TO THE FIRST JOINT OUTSIDE THE MANHOLE. THE CRADLE SHALL BE TERMINATED AT THE CLAY PIPE JOINT IN A MANNER WHICH WILL MAINTAIN THE FLEXIBILITY OF THE JOINT. COST OF CRADLE WITHIN MANHOLE EXCAVATION OR TO CLAY PIPE JOINTS ADJACENT TO MANHOLE SHALL BE INCLUDED IN THE UNIT PRICE BID FOR THE MANHOLE.

- MANHOLE COVER CASTINGS AND MANHOLE FRAME CASTINGS SHALL CONFORM TO THE REQUIREMENTS AS INDICATED IN THE STANDARD SPECIFICATIONS AND AS SHOWN IN THE STANDARD DETAIL DRAWING.
- THE VERTICAL DROP IN INSIDE DROP MANHOLES SHALL NOT EXCEED 2' FOR INFLOWING PIPES SIZED 12" OR SMALLER AND 2' FOR INFLOWING PIPES LARGER THAN 12". THE CROWNS OF INFLOWING PIPES SHALL NEVER BE SET LOWER THAN THE CROWN OF THE OUTFLOWING PIPE.
- STANDARD MANHOLES AND STANDARD INSIDE DROP MANHOLES SHALL BE BID AS STANDARD MANHOLES FOR THE TYPE AND DIAMETER INDICATED. OUTSIDE DROP MANHOLES SHALL BE BID AS STANDARD OUTSIDE DROP MANHOLES FOR THE TYPE AND DIAMETER INDICATED. ALL MANHOLE DIAMETERS WILL BE 4' UNLESS INDICATED OTHERWISE.
- A BRICK MASONRY COLLAR SHALL BE INSTALLED BETWEEN THE CAST IRON FRAME AND THE CONCENTRIC CONE. THE COLLAR WILL HAVE 8" WALLS AND A VERTICAL HEIGHT OF 6" MINIMUM AND 18" MAXIMUM. A 1" COAT OF MORTAR WILL BE PLASTERED ON THE OUTSIDE OF THE COLLAR. THE USE OF PRE-CAST CONCRETE SPACERS FOR MANHOLE TOP ADJUSTMENT IS ALSO ALLOWED.

DSNR-DNR OPER. KER SCALE: 1=1/8" 01-1999-99372 (rev. design) manhole 04-14-2000 03:18:15 pm



THE CITY OF WICHITA

**STANDARD  
TYPE 'P'  
MANHOLES**

M. E. LINDEBAK P.E. - CITY ENGINEER

PROJECT NUMBER  
1002PPS (607861)

CITY ENGINEER'S OFFICE  
CITY HALL - SEVENTH FLOOR  
225 NORTH MAIN STREET  
WICHITA, KANSAS 67202  
(316) 268-4114 FAX

INDEX CODE

DATE  
MAR 96

SHEET 4 OF 4

18 OCT 96  
*B. A. E. H.*  
**RECORD DRAWING**

18 08 15