

SW Cor. of SW 1/4  
 Sect. 1, T82S, R1E

Constructed  
 by Others

**LEGEND**

- 10' --- Exist. Contours
- 20' --- Finished Contours
- Exist. Spot Elev.
- 10' --- Finished Grade Spot Elev.
- 10' --- Exist. Water Line
- 10' --- Exist. Gas Line
- 10' --- UBT --- Underground Telephone Cable & Manhole
- Exist. Fire Hydrant
- Exist. Telephone Pole
- 10' --- Exist. San. Sewer
- 10' --- Exist. Telephone Cable
- 10' --- Exist. Power Line & Pole

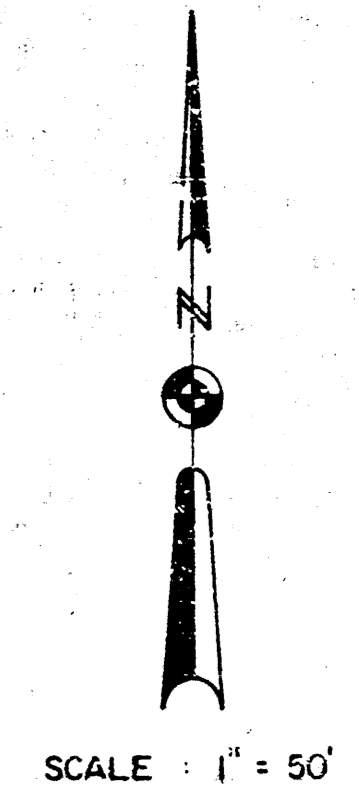
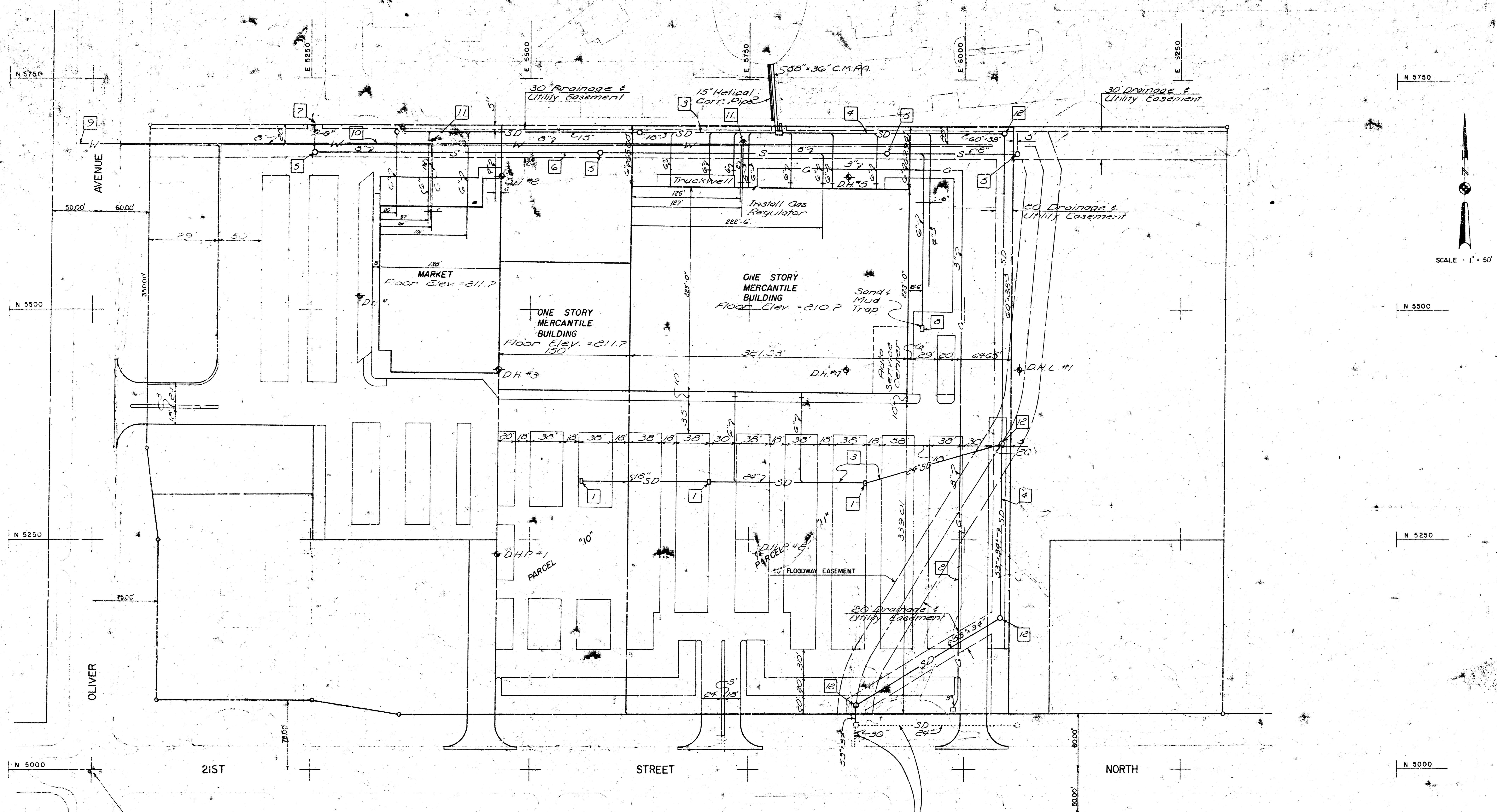
**CONSTRUCTION NOTES**

- 1 Construct Parking Lot Pavement See Detail Sh. C-6
- 2 Construct Service Drive Pavement See Detail Sh. C-6
- 3 Construct 24 inch Concrete Curb @ Gutter See Detail Sh. C-6
- 4 Construct Area Inlet See Detail Sh. C-9, 316
- 5 Construct Reinforced Concrete Manhole See Detail Sh. C-9, 316
- 6 Construct 5' Bottom Flume See Detail Sh. C-6
- 7 Construct 3' Bottom Flume See Detail Sh. C-6
- 8 Install Concrete Wheel Stops See Architectural Site Plan For Additional Information

**SITE PREPARATION**

- 1 Remove Single Family Home
- 2 Remove Existing Stairway & Fish Pond
- 3 Remove Stone Dog House
- 4 Remove Fencing
- 5 Remove Foundation
- 6 Power Pole Removed After Checking With Engineer
- 7 Clear All Trees From Site Not Marked For Saving
- 8 Remove & Retain On Site 36" x 36" Culvert
- 9 Remove Septic Tank & Tile
- 10 Existing Pond At Rate Not To Exceed 450 G.P.M.
- 11 Remove Existing Structure & Foundation

Note: No splicing of copper water service lines will be allowed beneath paved areas. Where fittings are required, the copper tubing shall be joined by the flared coupling method.



S.W. Cor. of S.W. 1/4  
Sect. 1, T87S, R1E

Constructed by Others

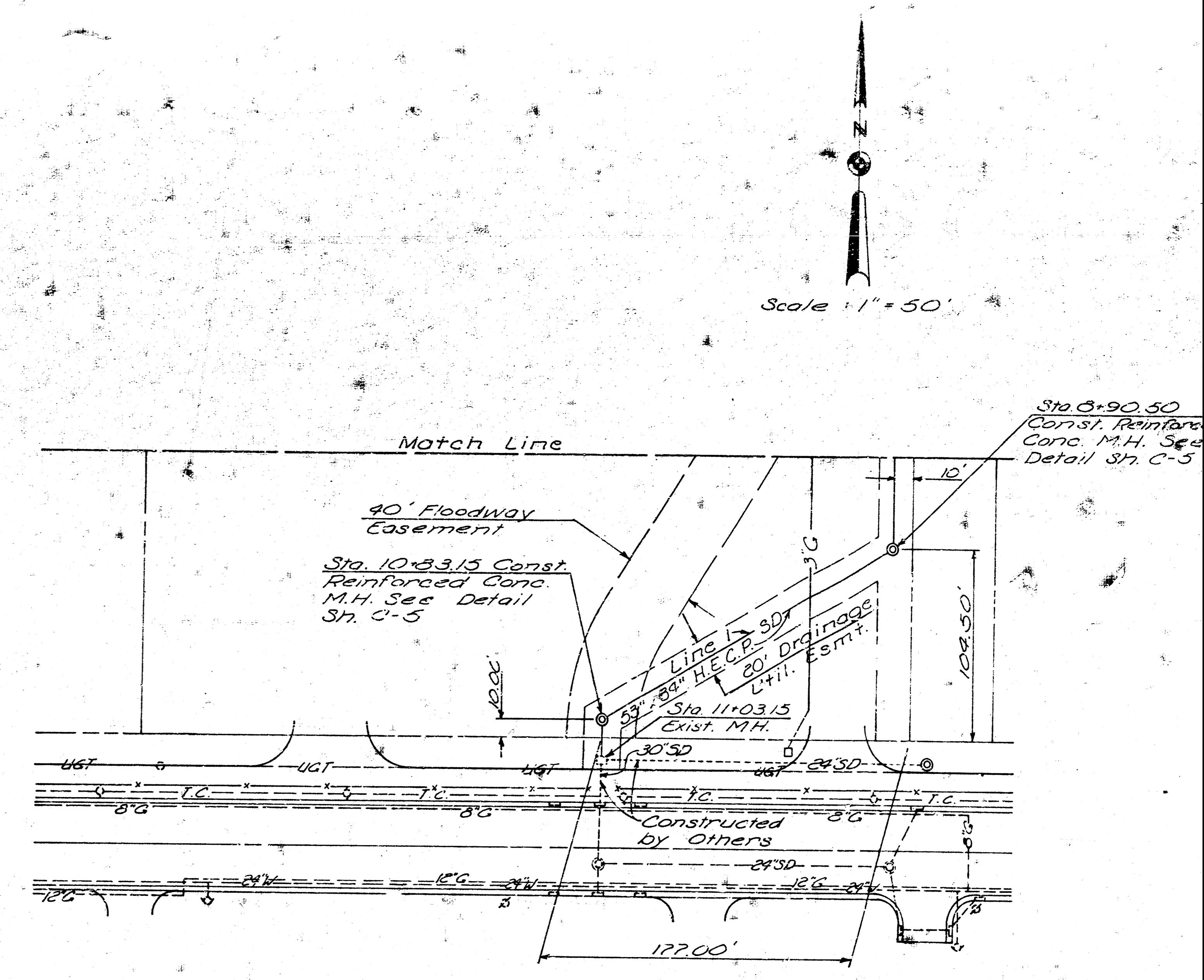
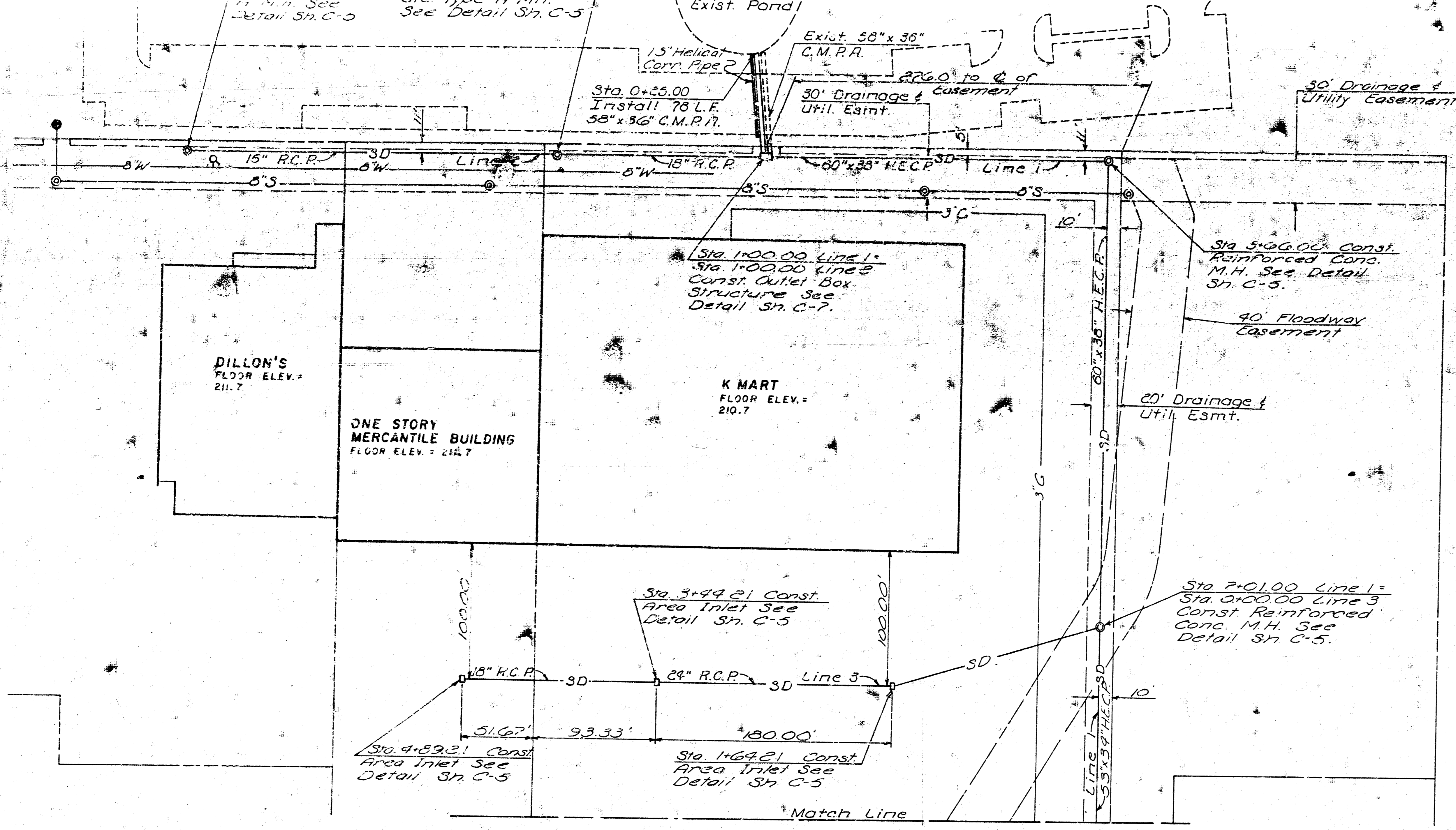
Total Parking Capacity of  
Parcels 10 & 11 = 437 Cars

LEGEND

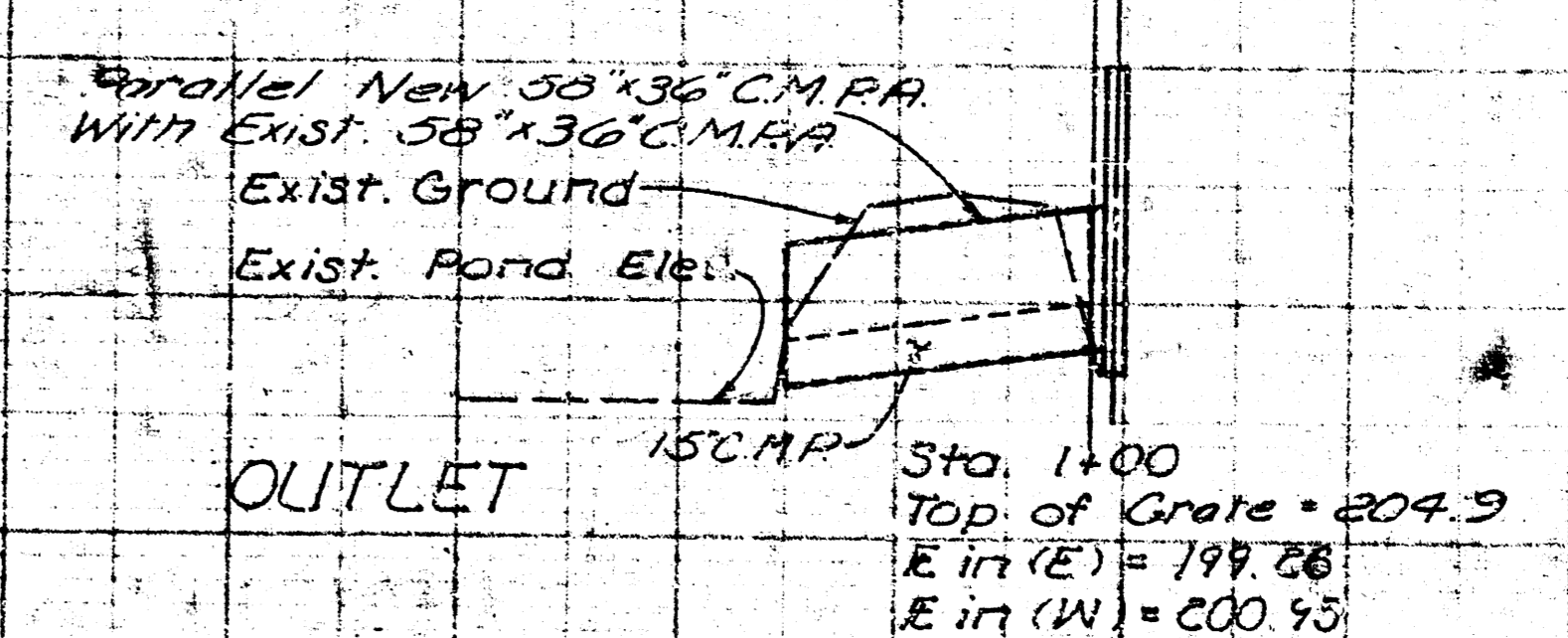
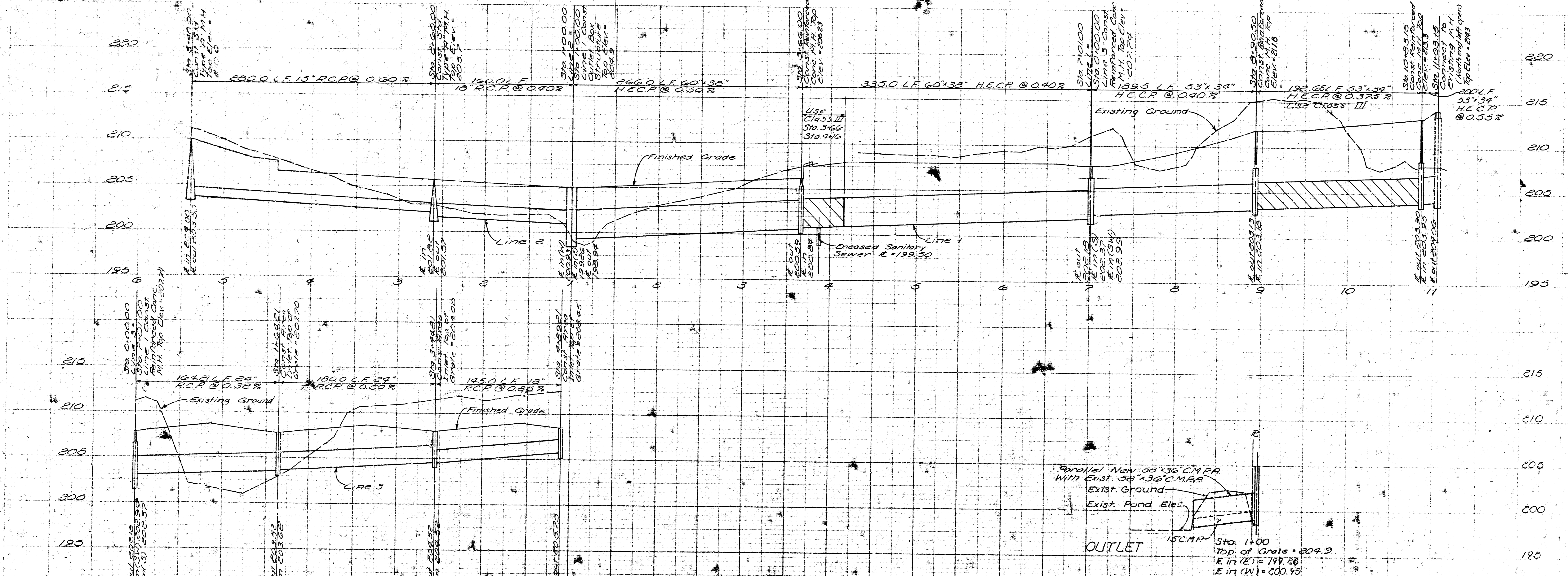
- Exist. Contours
- Exist. Spot Elev.
- Exist. Water Line
- - - Exist. Gas Line
- · - · - Underground Telephone Cable & Manhole
- Exist. Fire Hydrant
- Exist. Telephone Pole
- Exist. San. Sewer
- Exist. Telephone Cable

CONSTRUCTION NOTES (UTILITY PLAN)

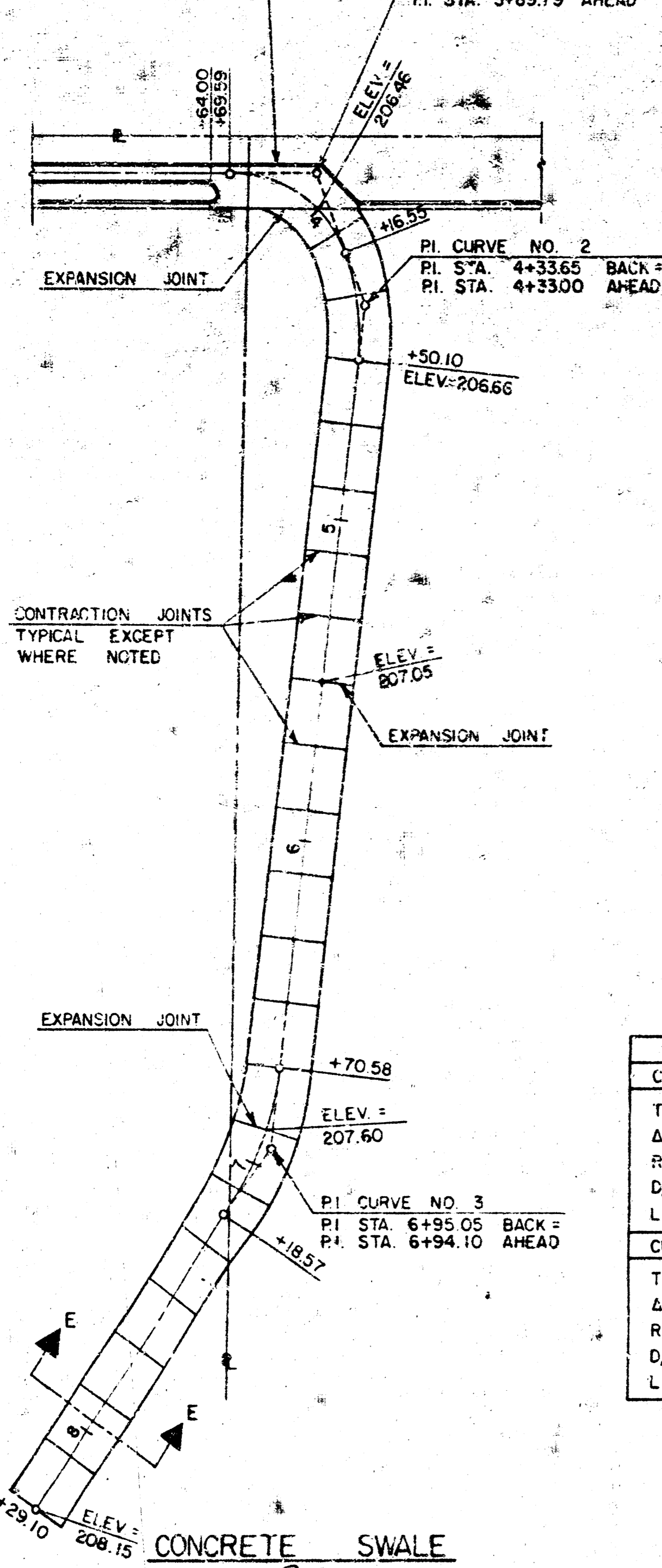
- 1 Construct Area Inlet See Detail Sh. C-316
- 2 3 inch Gas Line, Meter Pad, & Regulator
- 3 Install R.C.P. Storm Drain
- 4 Install H.E.C.P. Storm Drain
- 5 Construct Sanitary Sewer Manhole
- 6 Install 8 inch V.C.P. Sanitary Sewer Line See Sh. C-3
- 7 Make Connection To Existing Sanitary Sewer Manhole
- 8 Construct Sand & Mud Trap See Detail Sh. C-3



B.M. - City of Wichita bench mark disc., 33' West and 42' North of center line both. Elev. = 217.62

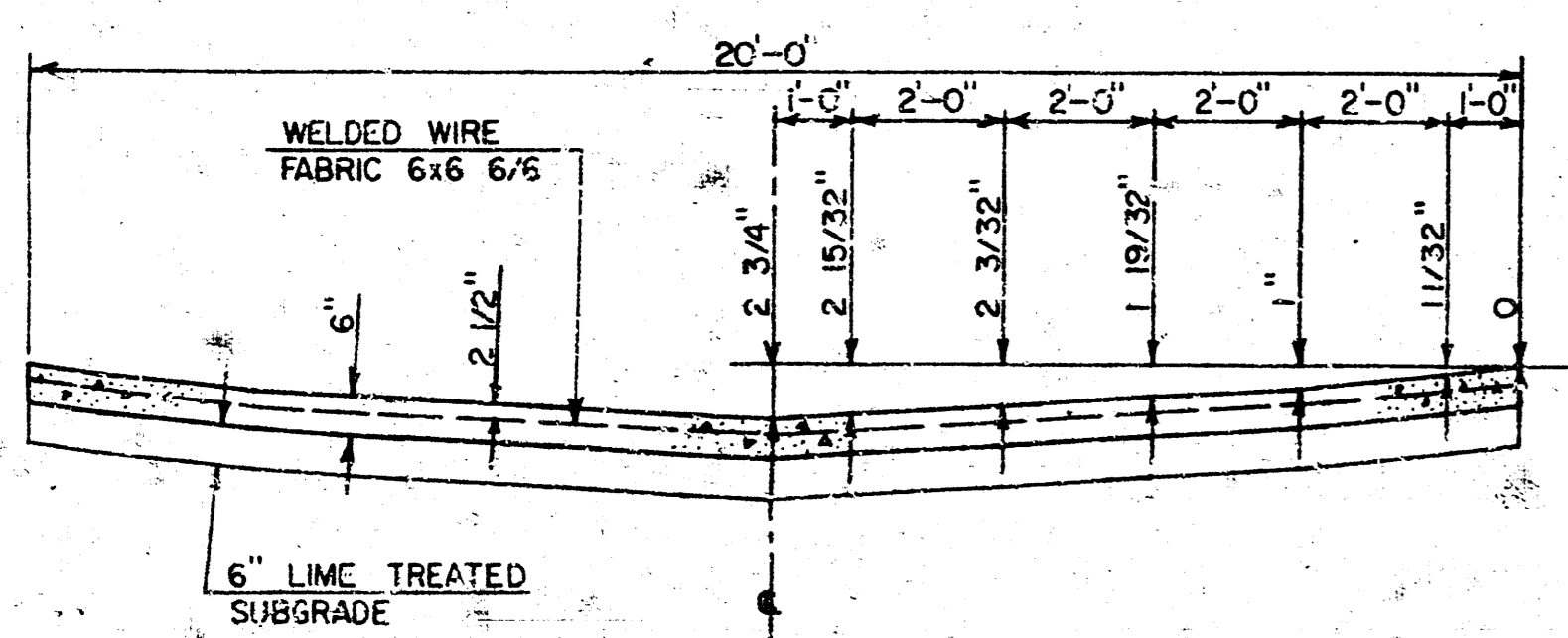


SEE FLUME ENTRANCE  
DETAIL BELOW

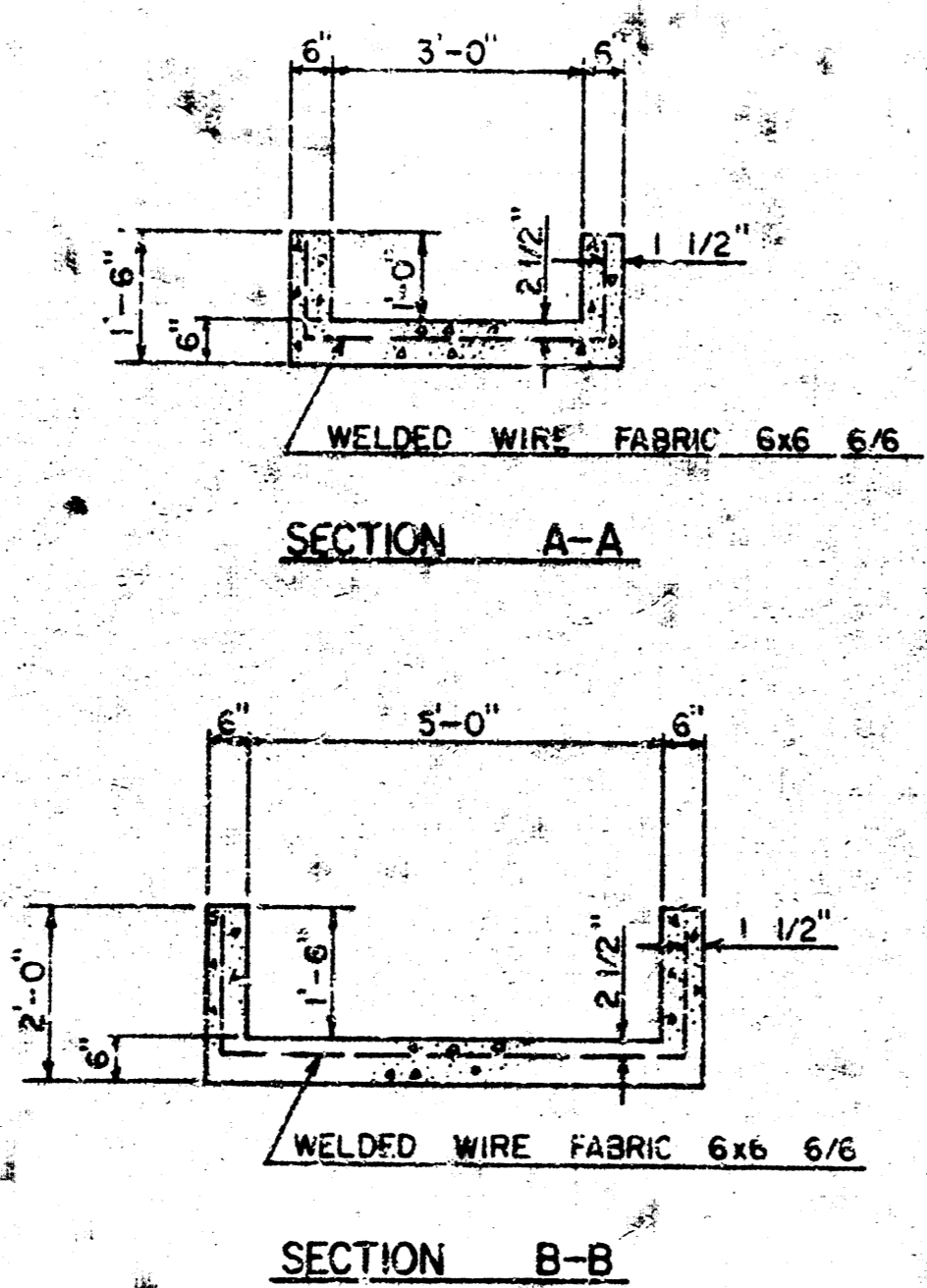


CURVE DATA	
CURVE NO. 1	CURVE NO. 2
T = 26.76'	T = 17.10'
Δ = 66°40'00"	Δ = 27°20'12"
R = 39.19'	R = 70.32'
D <sub>A</sub> = 146°12'54"	D <sub>A</sub> = 81°29'01"
L = 46.96'	L = 33.53'
CURVE NO. 3	
T = 24.47'	
Δ = 27°29'48"	
R = 100.00'	
D <sub>A</sub> = 57°17'45"	
L = 47.99'	

FLUME ENTRANCE  
SEE SHT. C-1

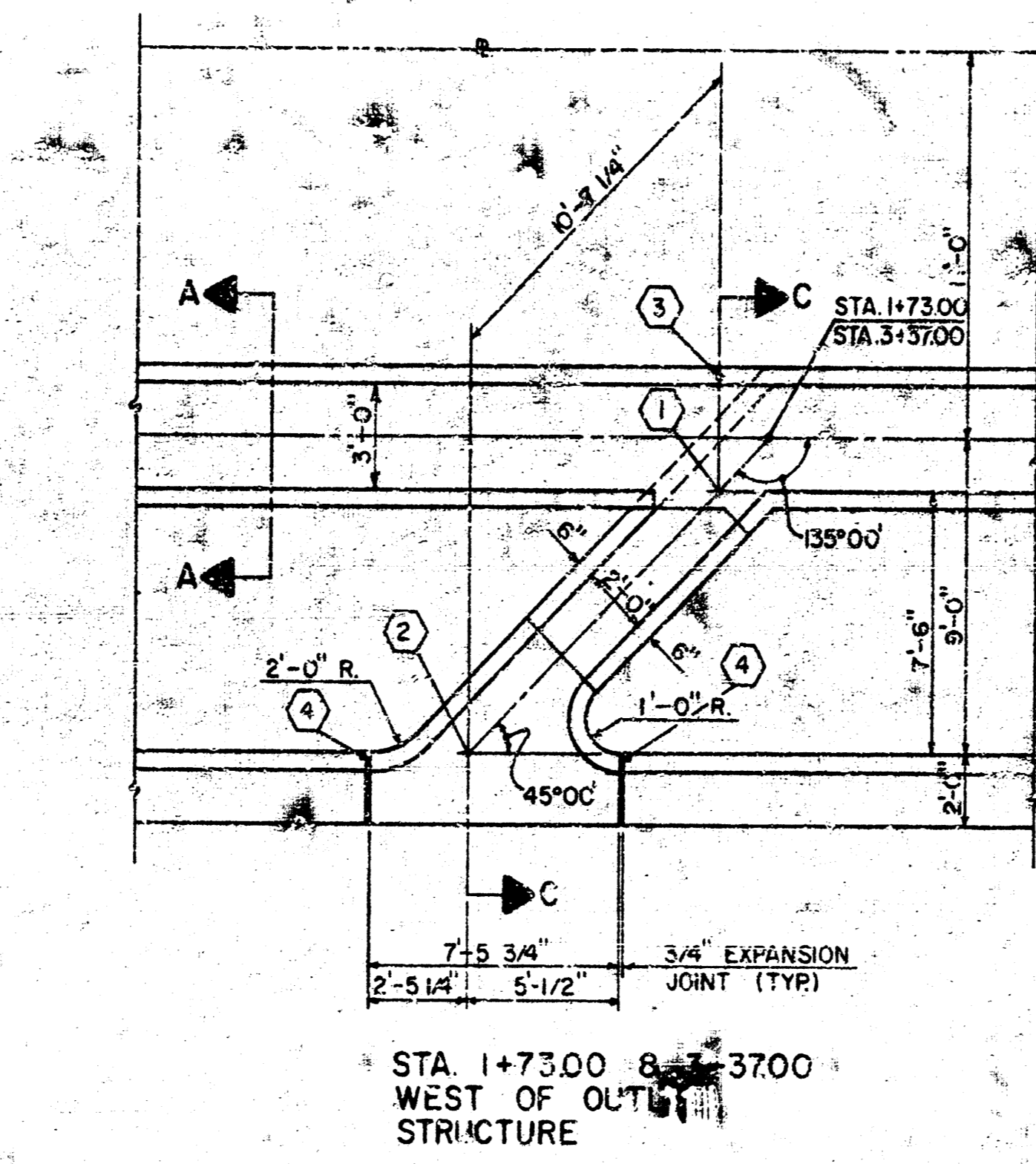


SECTION E-E  
(TYPICAL)

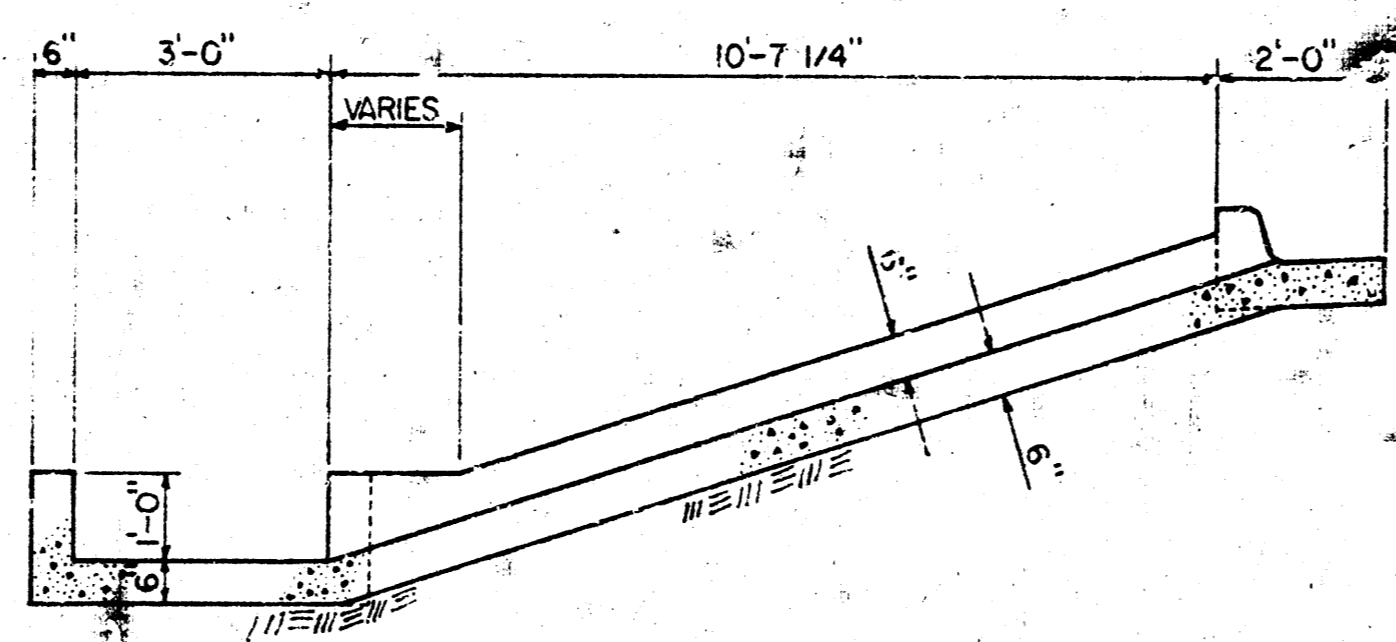


SECTION A-A

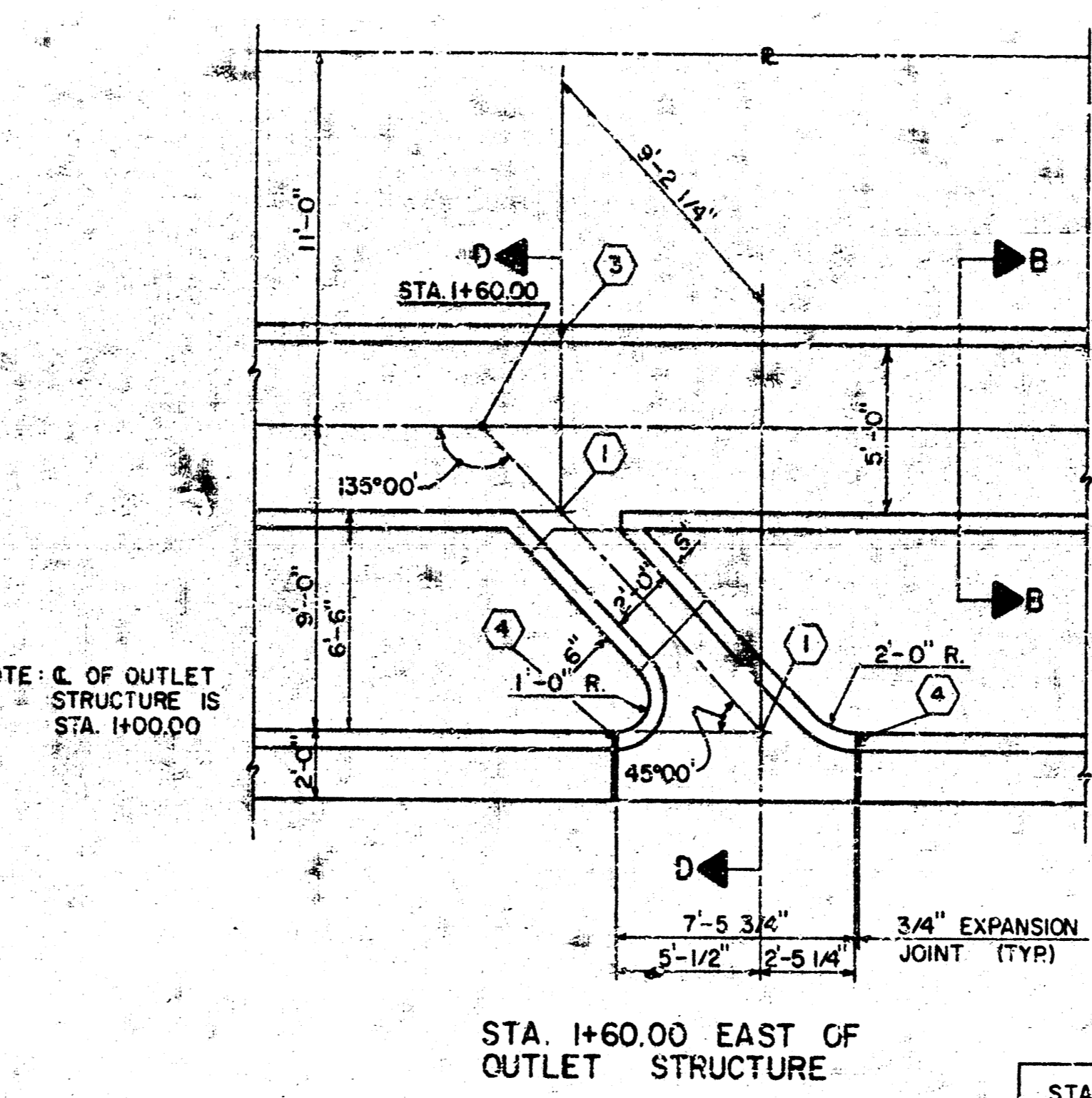
SECTION B-B



FLUME DETAILS  
SEE SHT. C-1

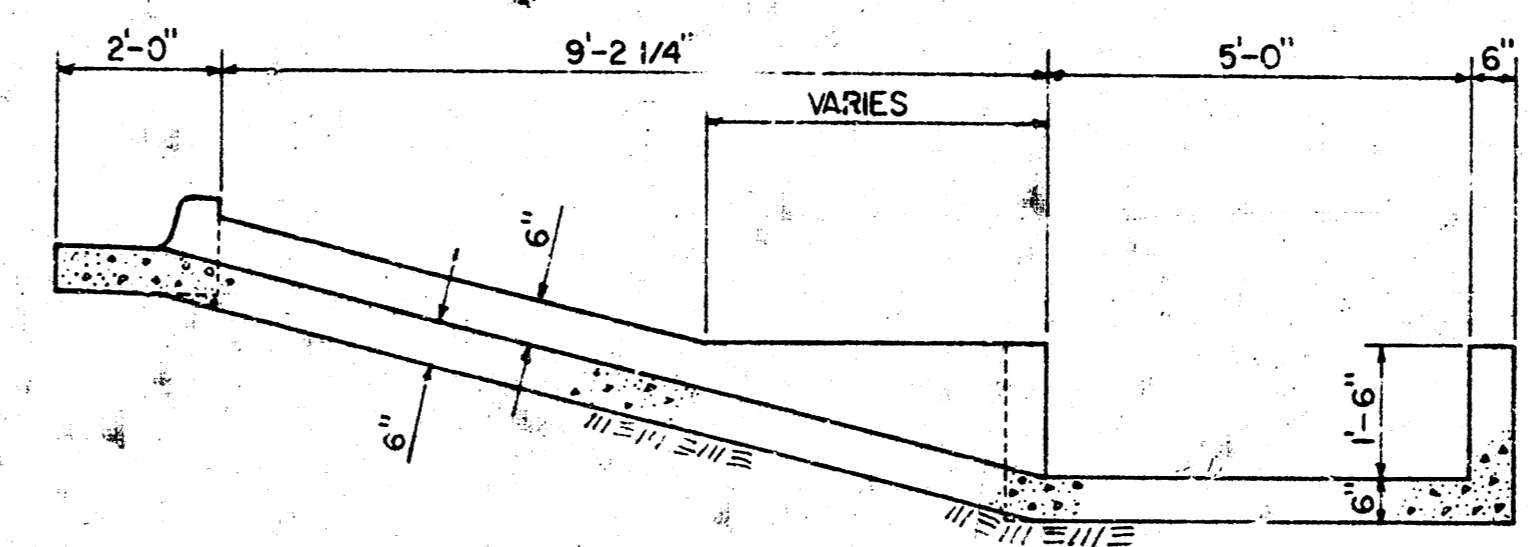


SECTION C-C

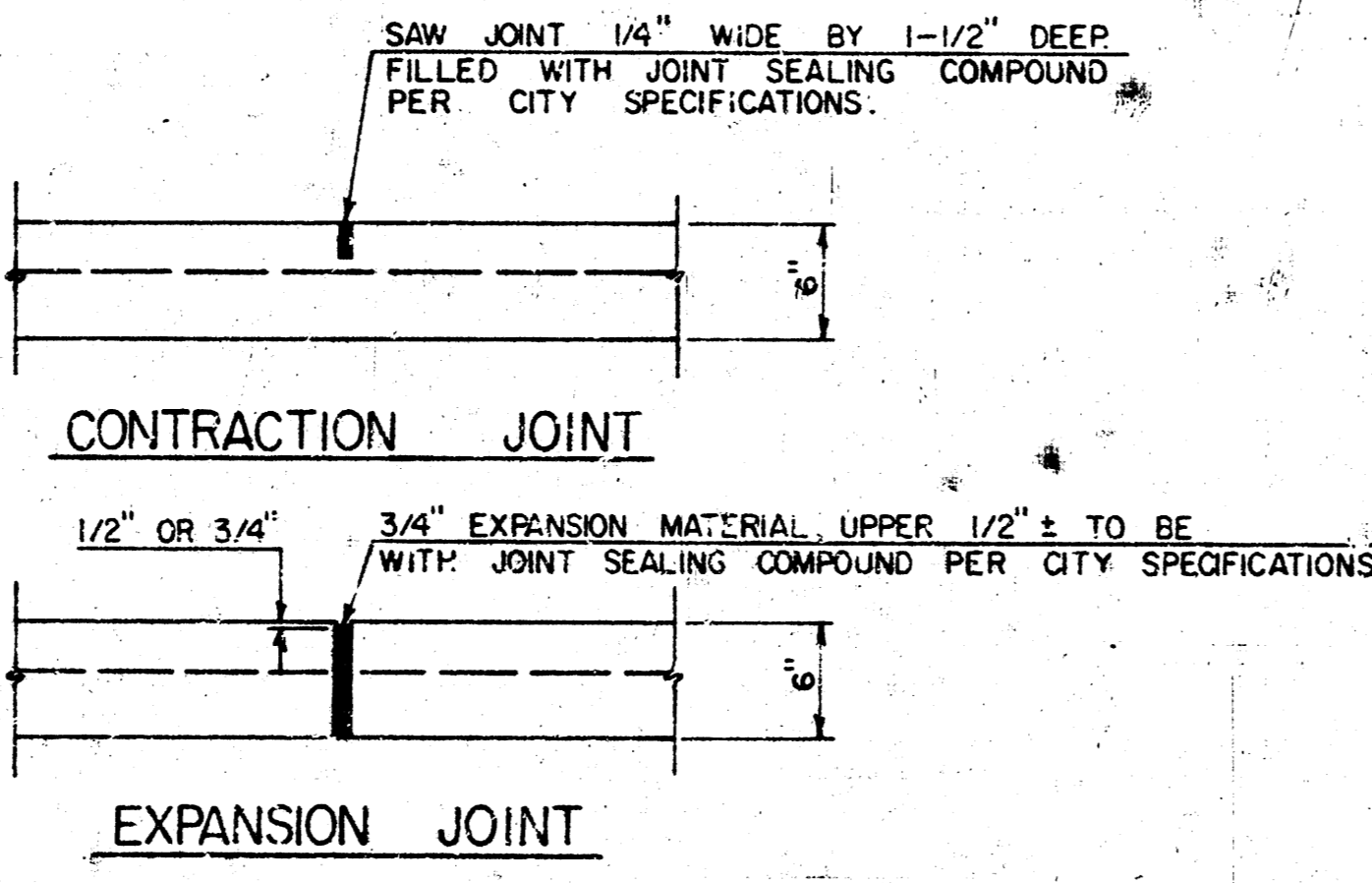


STA. 1+60.00 EAST OF  
OUTLET STRUCTURE

STA	PT. NO.	ELEV.
1+60.00E	1	E. 205.20
	2	E. 208.75
	3	T.C. 206.70
	4	T.C. 209.25
1+73.00W	1	E. 206.27
	2	E. 208.70
	3	T.C. 206.27
	4	T.C. 209.20
3+37.00W	1	E. 206.58
	2	E. 206.50
	3	T.C. 207.58
	4	T.C. 207.10

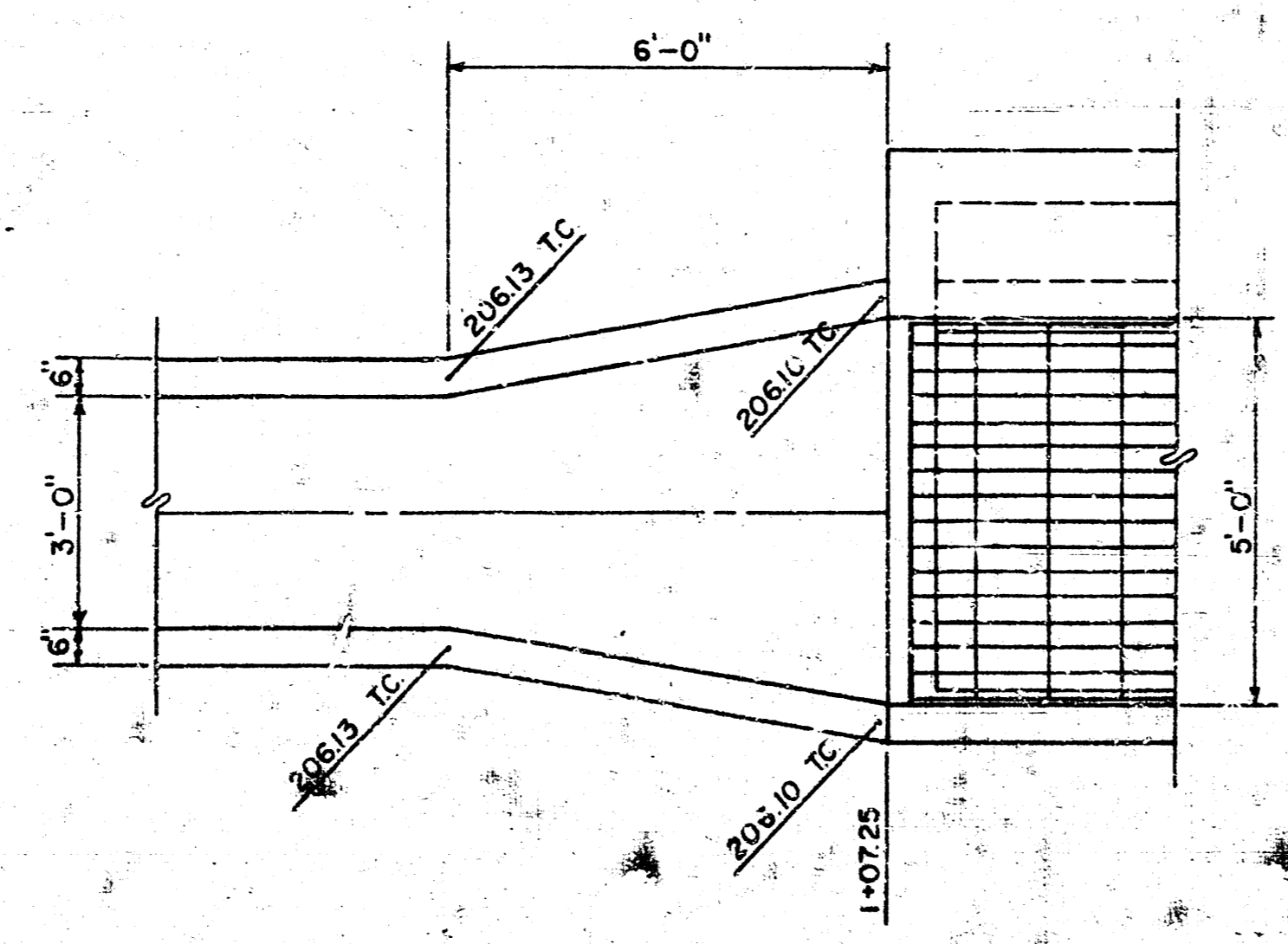


SECTION D-D



CONTRACTION JOINT

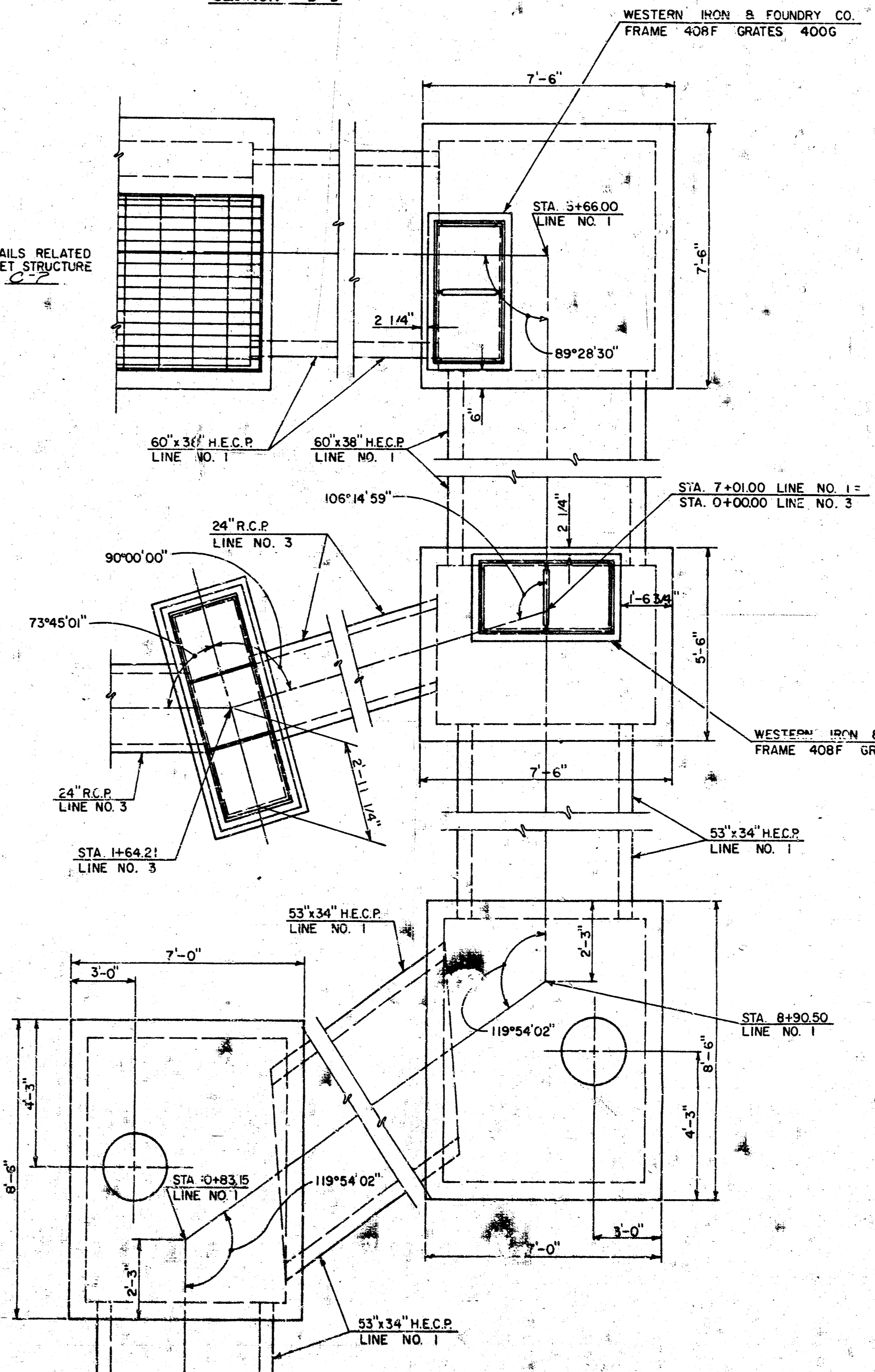
EXPANSION JOINT



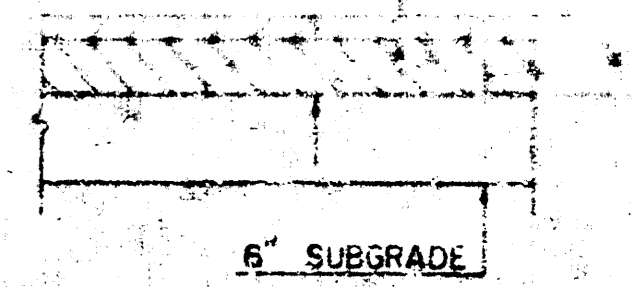
FLUME APRON  
SEE SHT. C-1

NOTE: FOR DETAILS RELATED  
TO OUTLET STRUCTURE  
SEE SHT. C-2

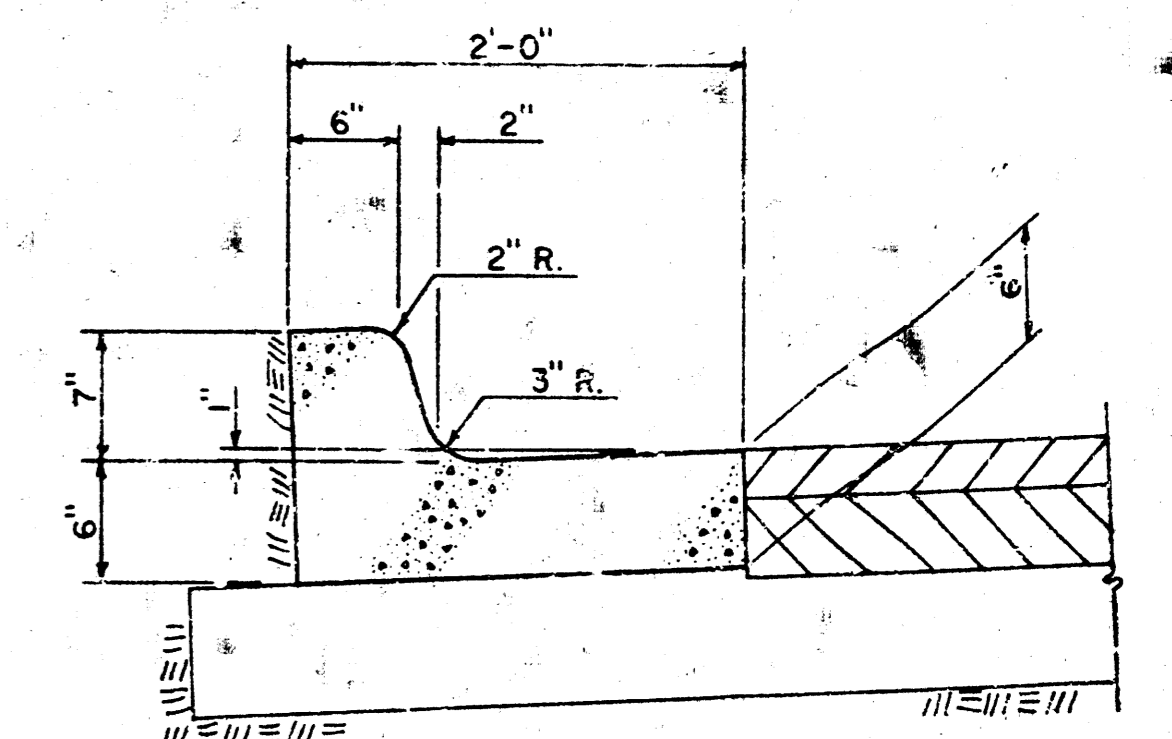
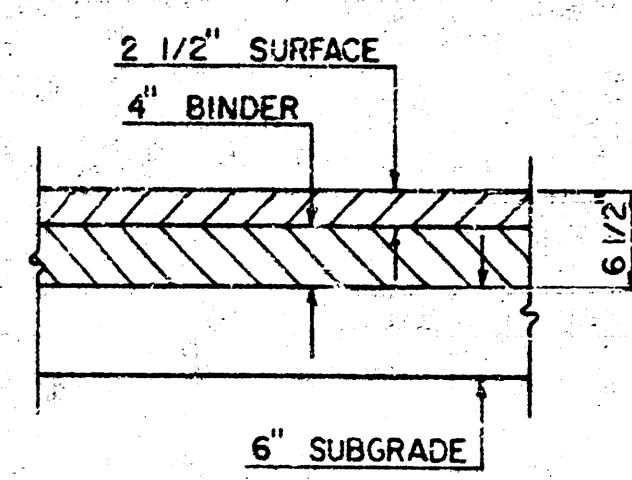
NOTE: FOR DETAILS RELATED  
TO OUTLET STRUCTURE  
SEE SHT. C-2



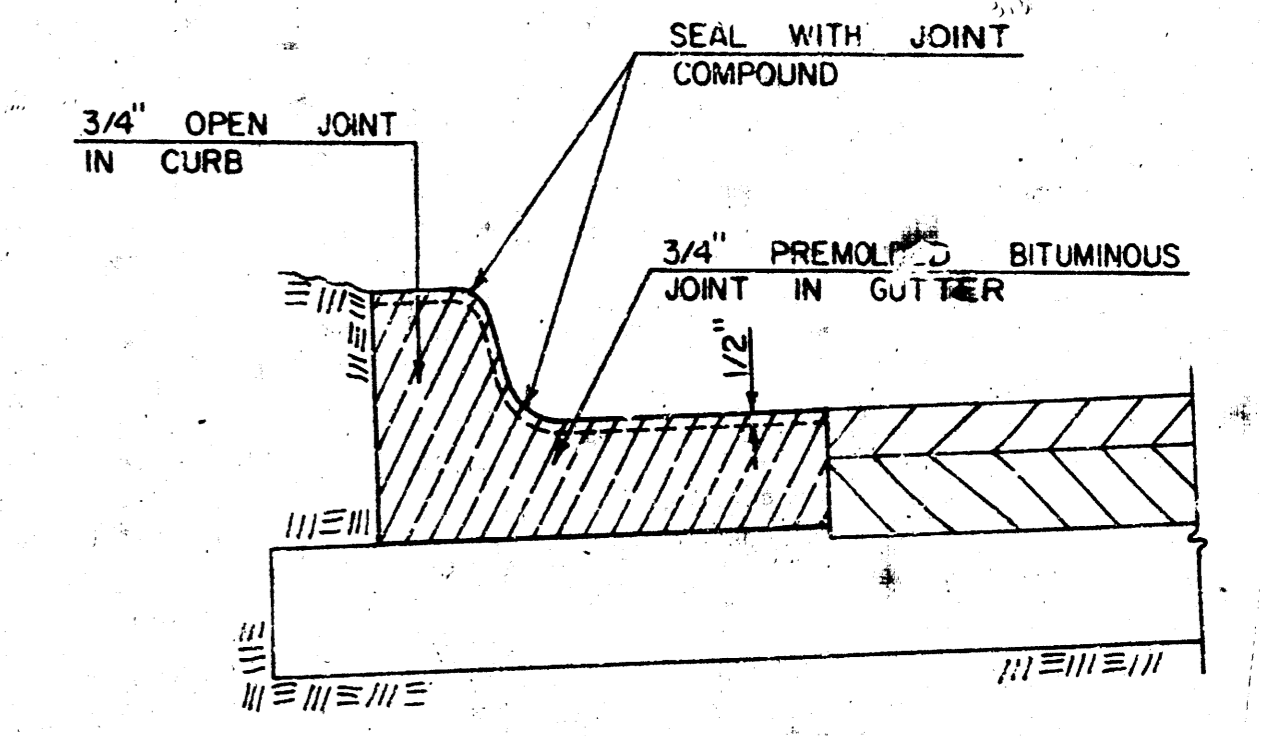
PARKING LOT PAVEMENT  
SURFACE - BITUMINOUS CONCRETE SURFACE  
COURSE, 1 1/2" COMPACTED THICKNESS  
BASE - BITUMINOUS BASE COURSE, 2 1/2"  
COMPACTED THICKNESS  
SUBGRADE - LIME TREATED SUBGRADE, 6"  
COMPACTED THICKNESS



SERVICE DRIVE PAVEMENT  
SURFACE - BITUMINOUS CONCRETE SURFACE  
COURSE, 2 1/2" COMPACTED THICKNESS  
BASE - BITUMINOUS BASE COURSE, 4"  
COMPACTED THICKNESS  
SUBGRADE - LIME TREATED SUBGRADE, 6"  
COMPACTED THICKNESS



CURB AND GUTTER DETAIL



EXPANSION JOINT DETAIL

Project: ONE STORY MERCANTILE BUILDING  
 2011 Northwestern Highway, Suite 416  
 N.E.C. 21st ST. NORTH & OLIVER  
 Architect: W&Y Associates  
 Architect/C Planner: W&Y Associates  
 2011 Northwestern Highway, Suite 416  
 Northfield, Minnesota 55057  
 Cont: [blank]  
 Approved: [blank]

