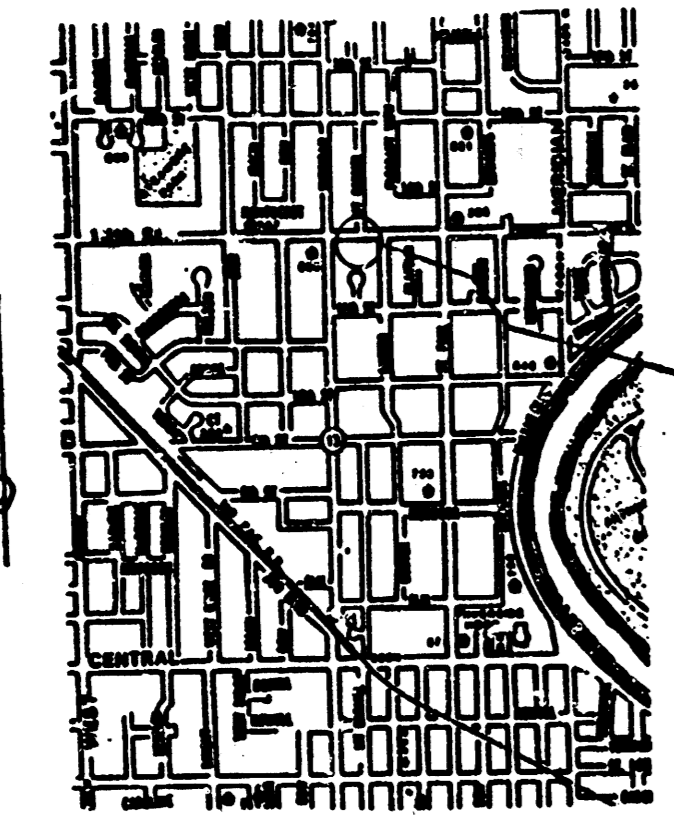


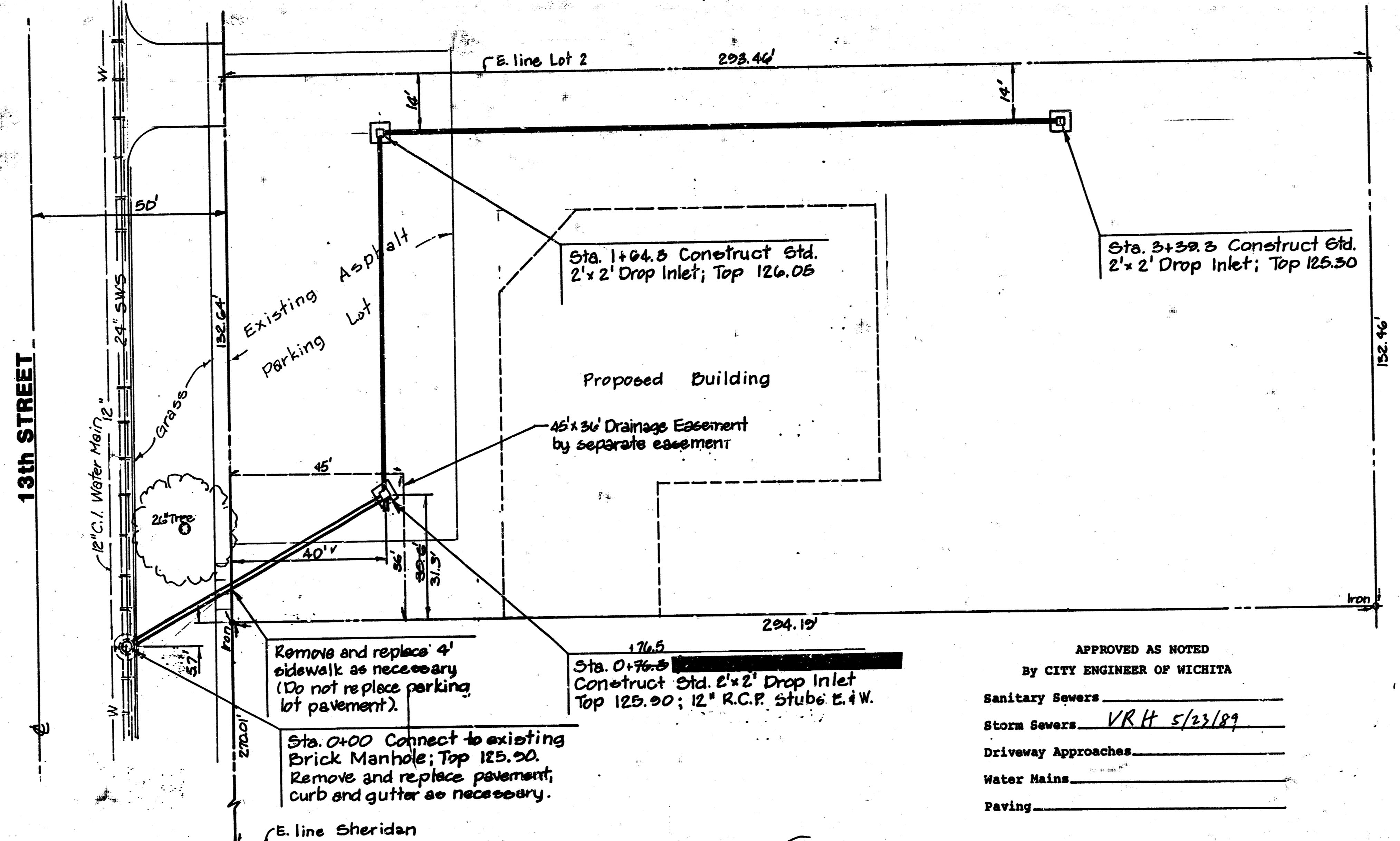
PLAN	DATE
NO.	
BY	
DATE	
BY	
DATE	
BY	
DATE	

N  
1" = 20'



LOCATION MAP

**BENCH MARK**  
City Disc 29.5' E. & 55.0' N. of  
E. 15th & Sheridan; elev. 125.72



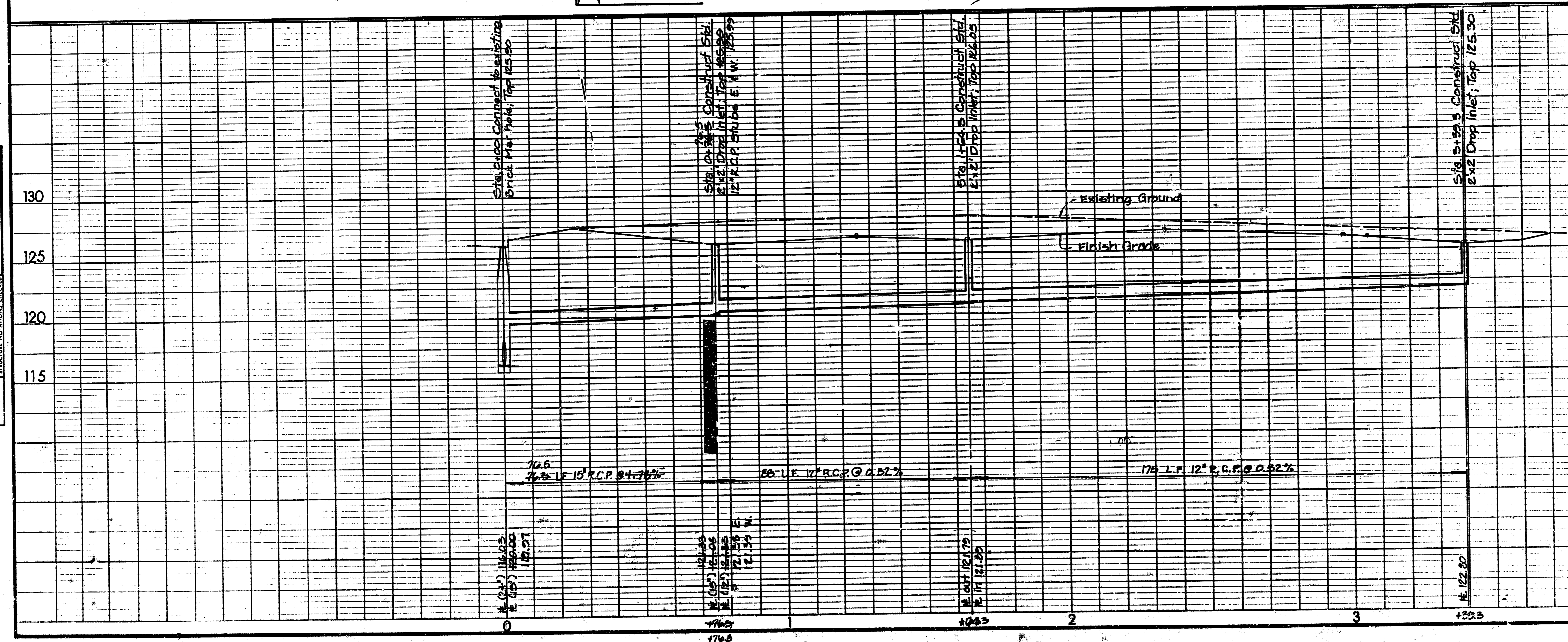
**GENERAL NOTES**

- Private Storm Water Sewer project #21 PPS ends at sta. 0+76.3.
- The Contractor shall be responsible for preserving property irons. The Contractor will be required to re-establish any property irons which are damaged or destroyed by his construction operations. Such irons shall be re-established by a licensed land surveyor in accordance with state law.
- Removal and replacement of existing pavement shall conform to the applicable sections of the City of Wichita Standard Specifications. Minimum limits of such removal and replacement shall be one foot beyond the limits of the excavation for the sewer; except when such lines of removal are within three feet of an existing joint, the limits of removal shall be to the existing joint.
- The Contractor shall verify all underground utility locations prior to any excavation.

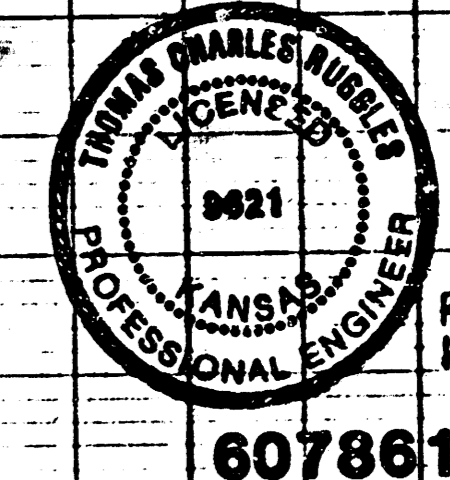
**NOTE TO CONTRACTOR**

INSPECTION AND TESTING FOR THIS PROJECT IS TO BE PROVIDED BY A LICENSED CONSULTING ENGINEERING FIRM UNDER CONTRACT WITH THE OWNER/DEVELOPER. SAID INSPECTION TO BE IN ACCORDANCE WITH THE CITY OF WICHITA STANDARD CONSTRUCTION ENGINEERING PRACTICES AND CERTIFIED BY A LICENSED PROFESSIONAL ENGINEER. NO WORK SHALL BE PERFORMED IN DEDICATED EASEMENTS OR PUBLIC RIGHT-OF-WAY BY THE CONTRACTOR WITHOUT SUCH INSPECTION NOR SHALL ANY WORK BE COMMENCED WITHOUT WRITTEN AUTHORIZATION BY THE CITY ENGINEER.

PROFILE	DATE
NO.	
BY	
DATE	
BY	
DATE	
BY	
DATE	



Booked  
10/29  
MCG



Rev. as built 10-10-89  
Rev. 8-25-89

**607861 215PPS**

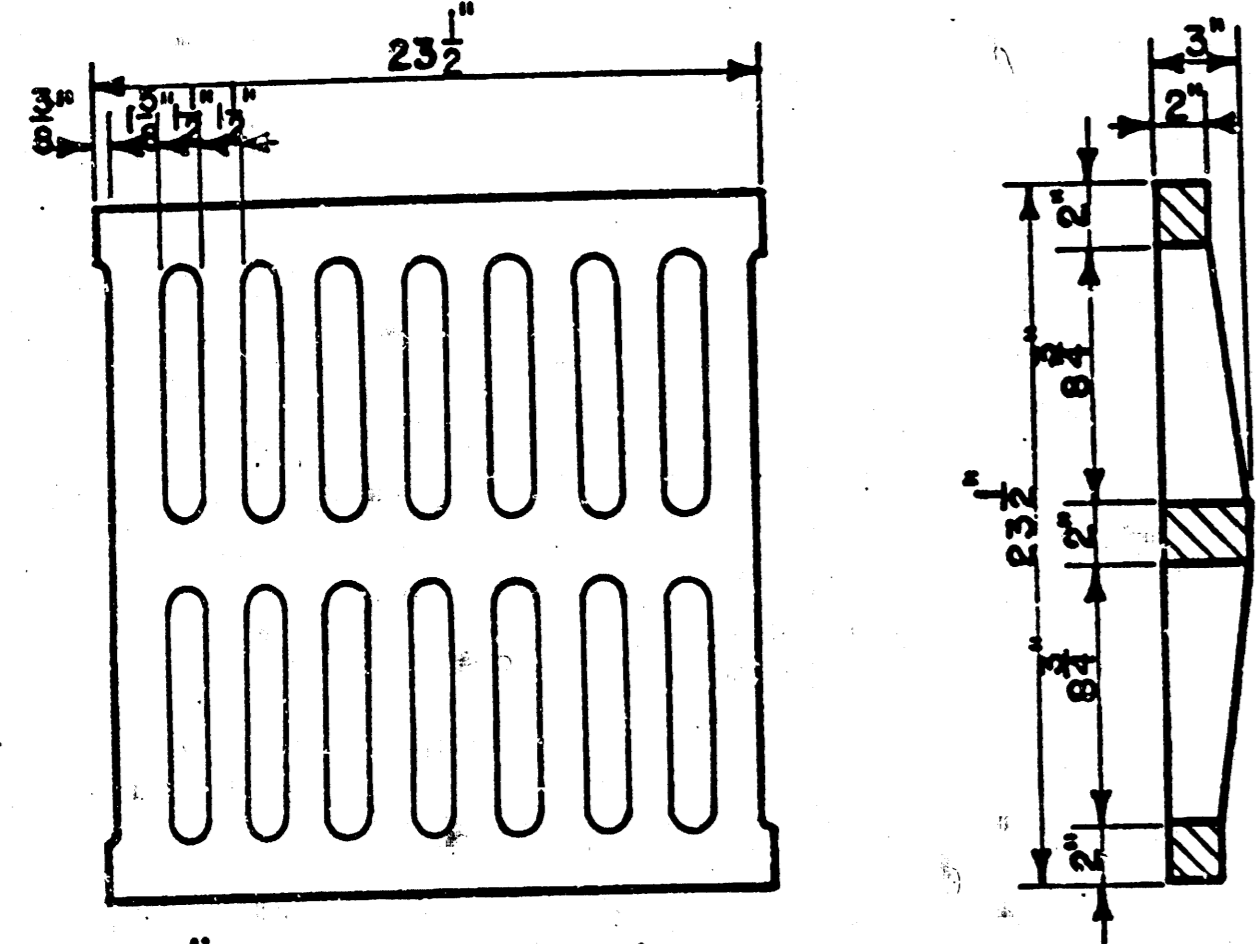
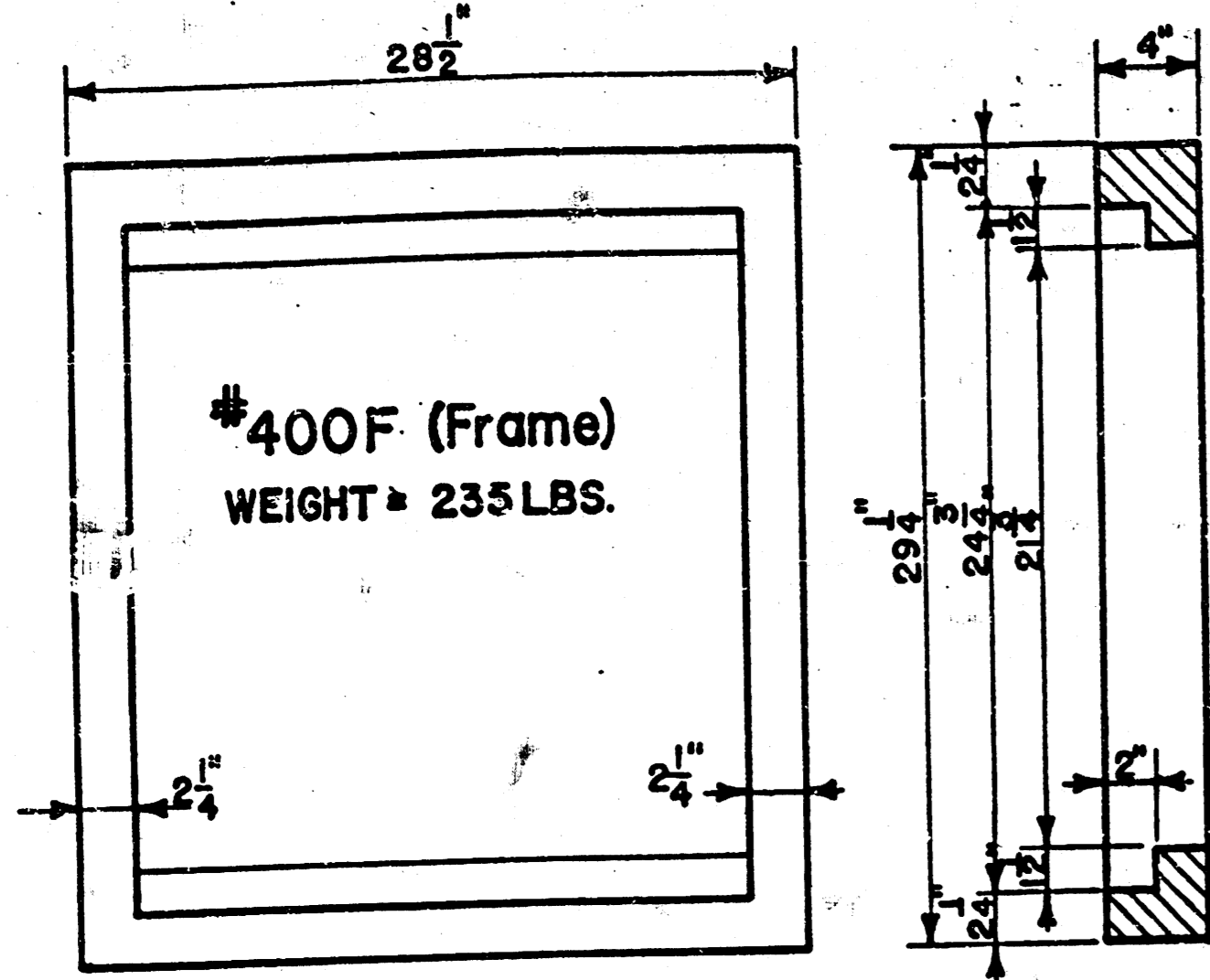
**PRIVATE STORM WATER SEWER**  
to serve Lot 2, Block A, Kansas  
Add., exc. the W. 131' thereof

**BAUGHMAN COMPANY, P.A.**  
SURVEYING & ENGINEERING  
310202-7271 • 315 ELLIS • WICHITA, KANSAS 67211

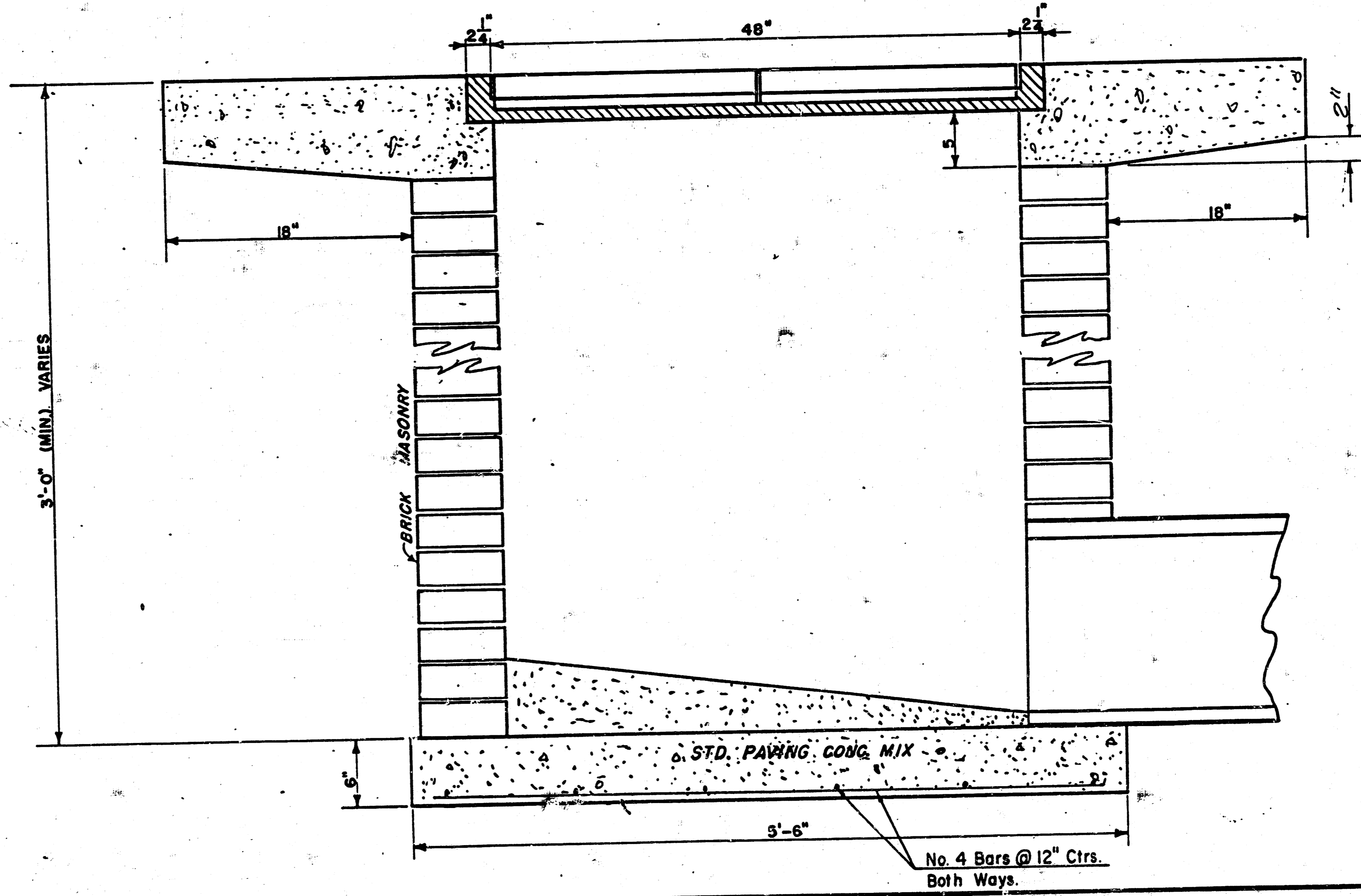
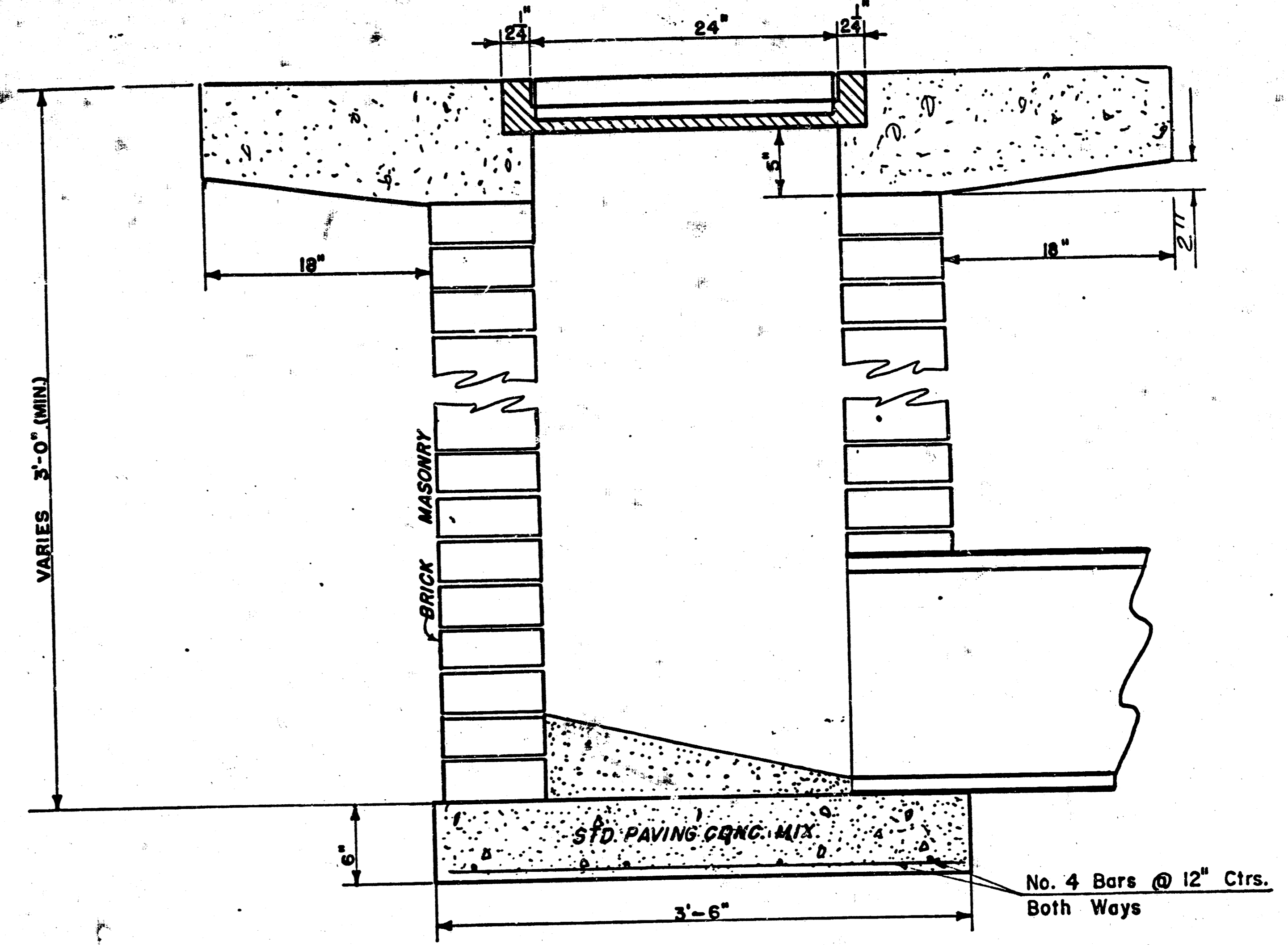
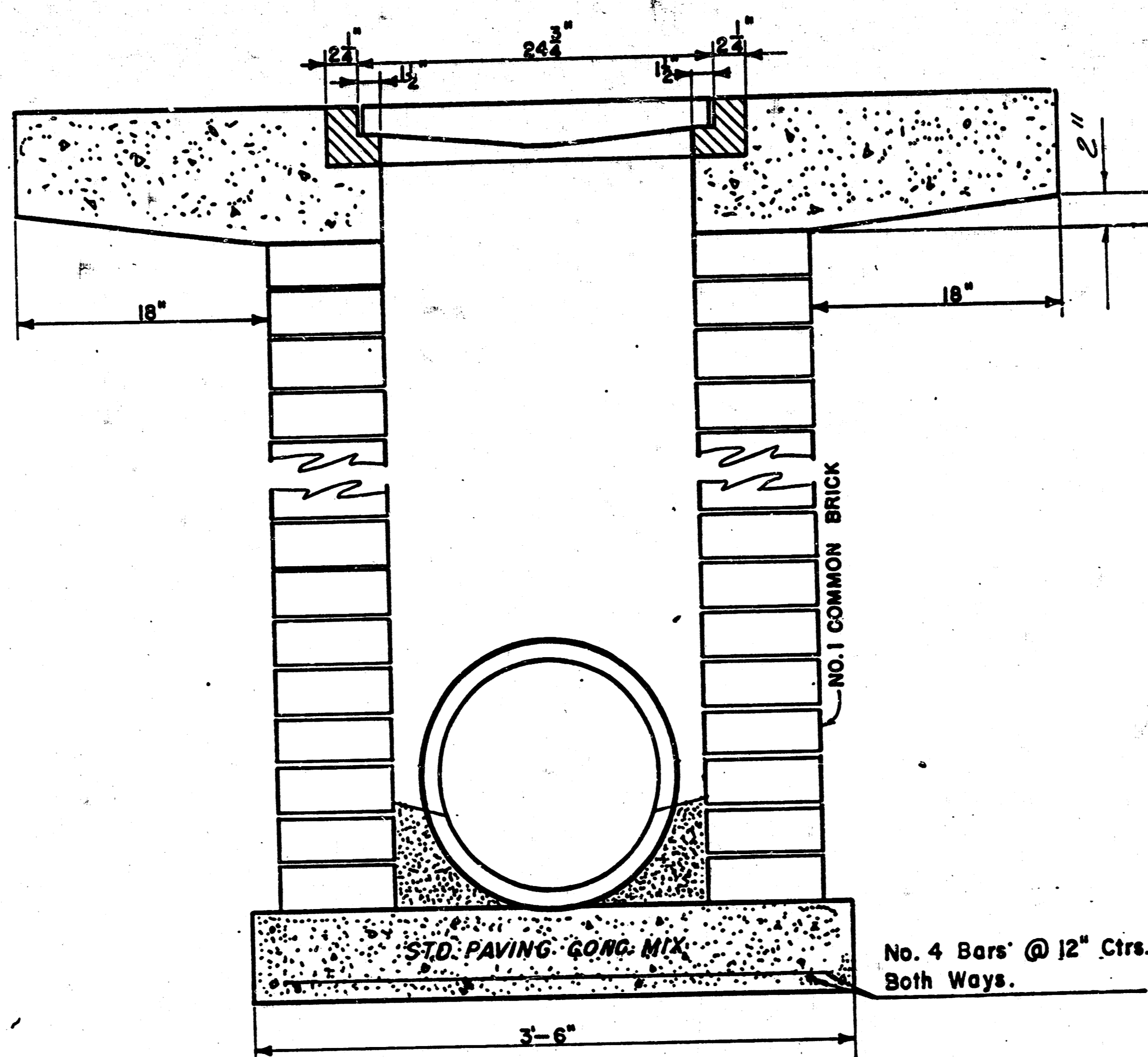
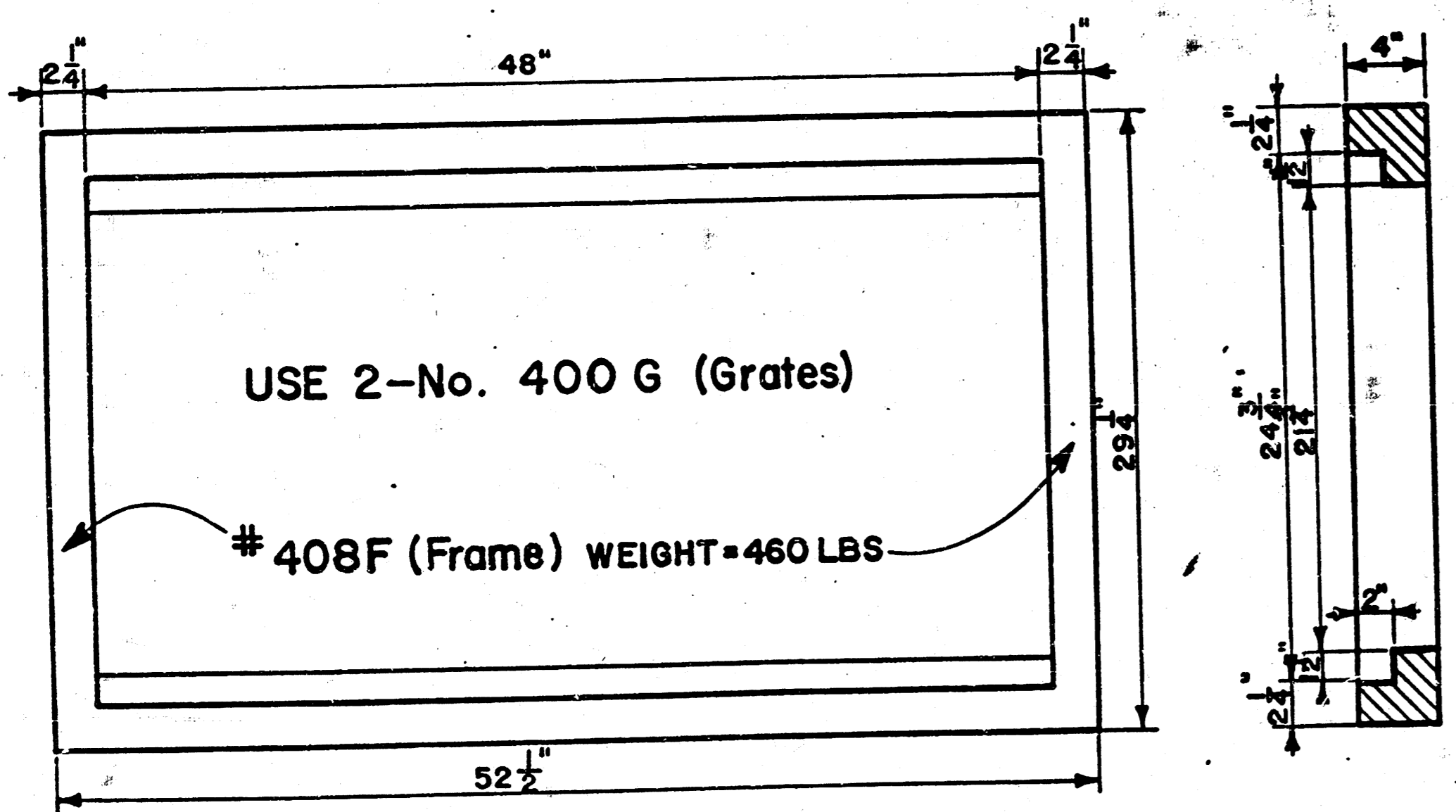
Design: TCR  
Drawn: TCR  
Approved: TCR  
Date: 5-22-89  
Scale: 1" = 20'

Sheet 1 of 2

NOTE: Grates shall be imprinted on the top surface with "CITY OF WICHITA" using letters at least 1" in height. Other marking methods may be used only if approved by the engineer.



24"x24" Frame & Grate Detail



**DROP INLET DETAILS**  
M.E. Lindebak, City Engineer  
City of Wichita, Kansas  
Project No. 472-76-245-

Sheet 2 of 2

10 10 10