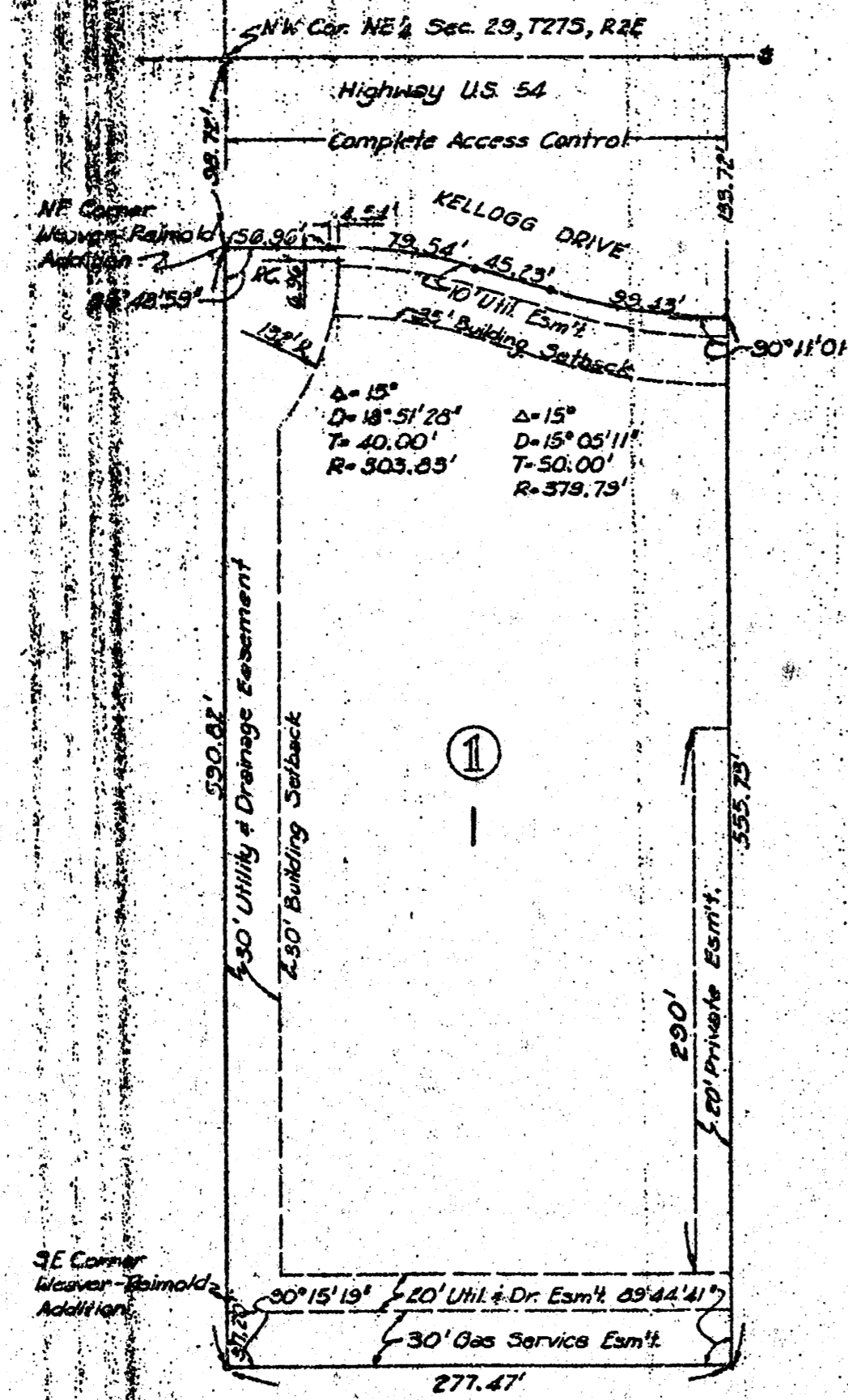




# LANKIN SECOND ADDITION

SEDGWICK COUNTY, KANSAS

NE 1/4 SEC. 29 T27S R2E



Scale 1"=100'  
 • Irons (3/4" Pipe)  
 set this survey  
 • Irons (3/4" Pipe)  
 previous survey

State of Kansas }  
 County of Sedgwick } s.s.

I, Wilmer Freund, a Licensed Professional Engineer in the State of Kansas, do hereby certify that I have surveyed and platted LANKIN SECOND ADDITION, Sedgwick County, Kansas, into a Block and a Lot, and that the accompanying plat is a true and correct exhibit of the property surveyed, described as follows: The west Seven Hundred Sixteen and Forty-eight Hundredths Feet (716.48') of the north Six Hundred Ninety Feet (690.0') of the NE 1/4 Section 29, T27S, R2E of the Sixth P.M., Sedgwick County, Kansas, except Lankin Addition, and except right of way for U.S. 54 Highway, said tract containing 3.65 acres, more or less.

March 23, 1971

*Wilmer Freund*  
 Wilmer Freund, P.E.

Know all men by these presents that we, the undersigned, owners of the land described in the engineer's certificate, have caused the same to be surveyed and platted into a block and a lot, the same to be known as LANKIN SECOND ADDITION, Sedgwick County, Kansas. Utility and drainage easements as shown hereon are granted for the construction and maintenance of public utilities or drainage.

*Kathleen Lankin*  
 Kathleen Lankin

*Arthur Lankin*  
 Arthur Lankin

State of Kansas }  
 County of Sedgwick } s.s.

Be it remembered that on this 11th day of March, 1971, before me, a Notary Public in and for said County and State, came Arthur Lankin and Kathleen Lankin, husband and wife, to me personally known to be the same persons who executed the foregoing instrument of writing and duly acknowledged the execution of same. In testimony whereof, I have hereunto set my hand and affixed my notarial seal the day and year above written.

My Commission expires February 28, 1972  
*Die Ann Brackbill*  
 Die Ann Brackbill, Notary

This plat of LANKIN SECOND ADDITION has been submitted to and approved by the Wichita Sedgwick County Metropolitan Area Planning Commission, Wichita, Kansas.  
 Dated this 11th day of March, 1971.

*Robert A. Lakin*  
 Robert A. Lakin, Secretary

*Floyd Souders*  
 Floyd Souders, Chairman

This plat approved and all dedications shown hereon accepted by the Board of Commissioners of the City of Wichita, Kansas, this 26th day of October, 1971.

*Ralph C. Eberly*  
 Ralph C. Eberly, City Clerk

*Jack H. Greene*  
 Jack H. Greene, Mayor

This plat approved and all dedications shown hereon accepted by the Board of County Commissioners of Sedgwick County, Kansas, this 4th day of February, 1971.

ATTEST:  
*Marte Warden*  
 Marte Warden, County Clerk

*Elmer S. Peters*  
 Elmer S. Peters, Chairman  
*Tom Scott*  
 Tom Scott, Commissioner  
*Earl E. Rush*  
 Earl E. Rush, Commissioner

Entered on transfer record this 4th day of February, 1971.

# 12852

*Marte Warden*  
 Marte Warden, County Clerk

State of Kansas }  
 County of Sedgwick } s.s.

This is to certify that this instrument was filed for record in the Register of Deeds Office, at 11 o'clock A.M., on the 11th day of February, 1971.

*Pearl Gilbert*  
 Pearl Gilbert, Deputy

*John Hale*  
 John Hale, Register of Deeds

3-15-71 231-B-301

1003 660  
 231-B-301  
 1003 660

2  
 2

AT 40 30 14

L-127