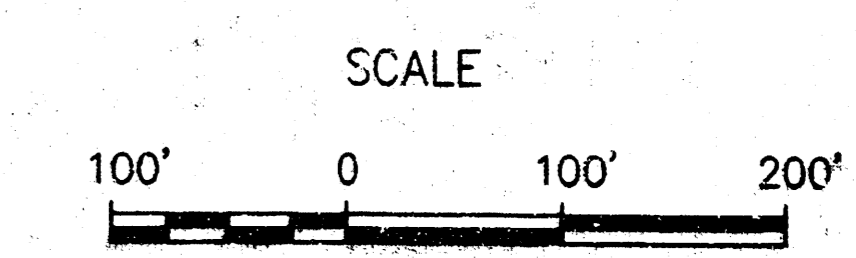


STORM SEWER IMPROVEMENTS TO SERVE
Mascot Addition Block 1 and 2

Project Number
1052 PPS (607861)

CITY OF WICHITA, KANSAS
 Michael E. Lindebak, P. E., City Engineer



GENERAL NOTES

- Contractor will be required to provide notice to utility companies a minimum of twenty-four (24) hours prior to any excavation, as follows:
 Kansas One-Call® 687-2470
 The Contractor must notify the following in case of an emergency:
 Cablevision 262-4270
 or 263-2061
 K.P.L. Gas Service Company 383-8650
 Kansas Gas & Electric Company 383-8600
 Peoples Natural Gas Gas 942-8811
 or 1800-303-0357
 Southwestern Bell Telephone Company 1-571-2611
 City of Wichita Water Department 268-4908
 City of Wichita Sewer Department 268-4071
 Kansas Gas Service 832-3168
 or 832-3167
- Exist. utilities and their locations, as shown on the plans, represent the best information obtainable for design. Location information has been obtained from the various utility companies and is either from company record drawings or company-provided field locations. The Contractor will be required to work around existing utilities which do not conflict with proposed construction.
- The Contractor to verify utility locations prior to construction of this project.
- Utility service and installation shall be coordinated with the respective utility owners. Contacts are:
 Kansas Gas Service Jim Stoltz 832-3122
 K.G.E. Russ Chitwood 261-6251
 Wichita Water Chuck Steven 268-4555
 Joe Botinelly 268-4908
 Southwestern Bell Jim Tobin 268-2759
- Traffic affected by the construction of this project shall be handled in accordance with the latest edition of the Manual on Uniform Traffic Control Devices.
- See site plans for seeding information.

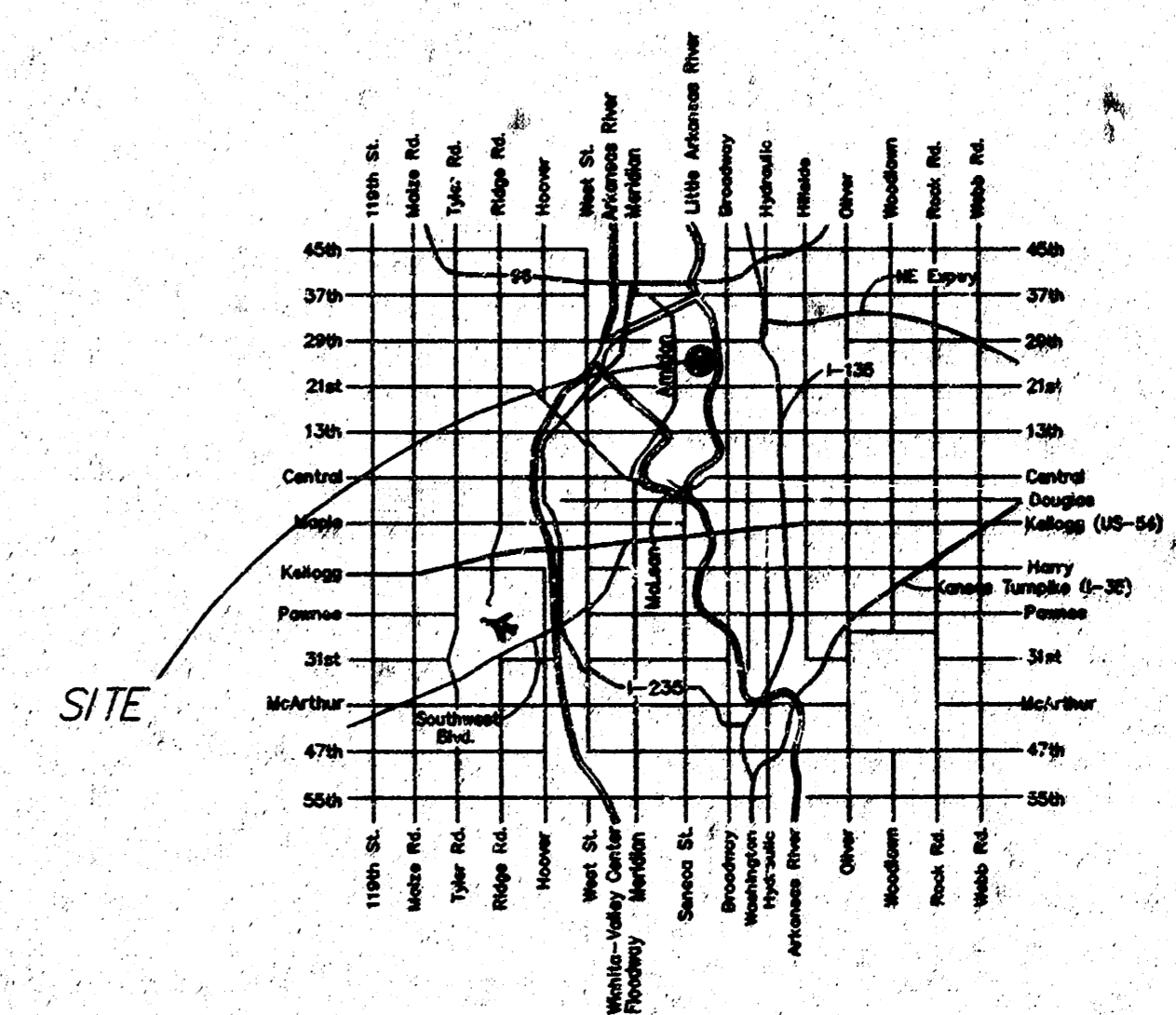
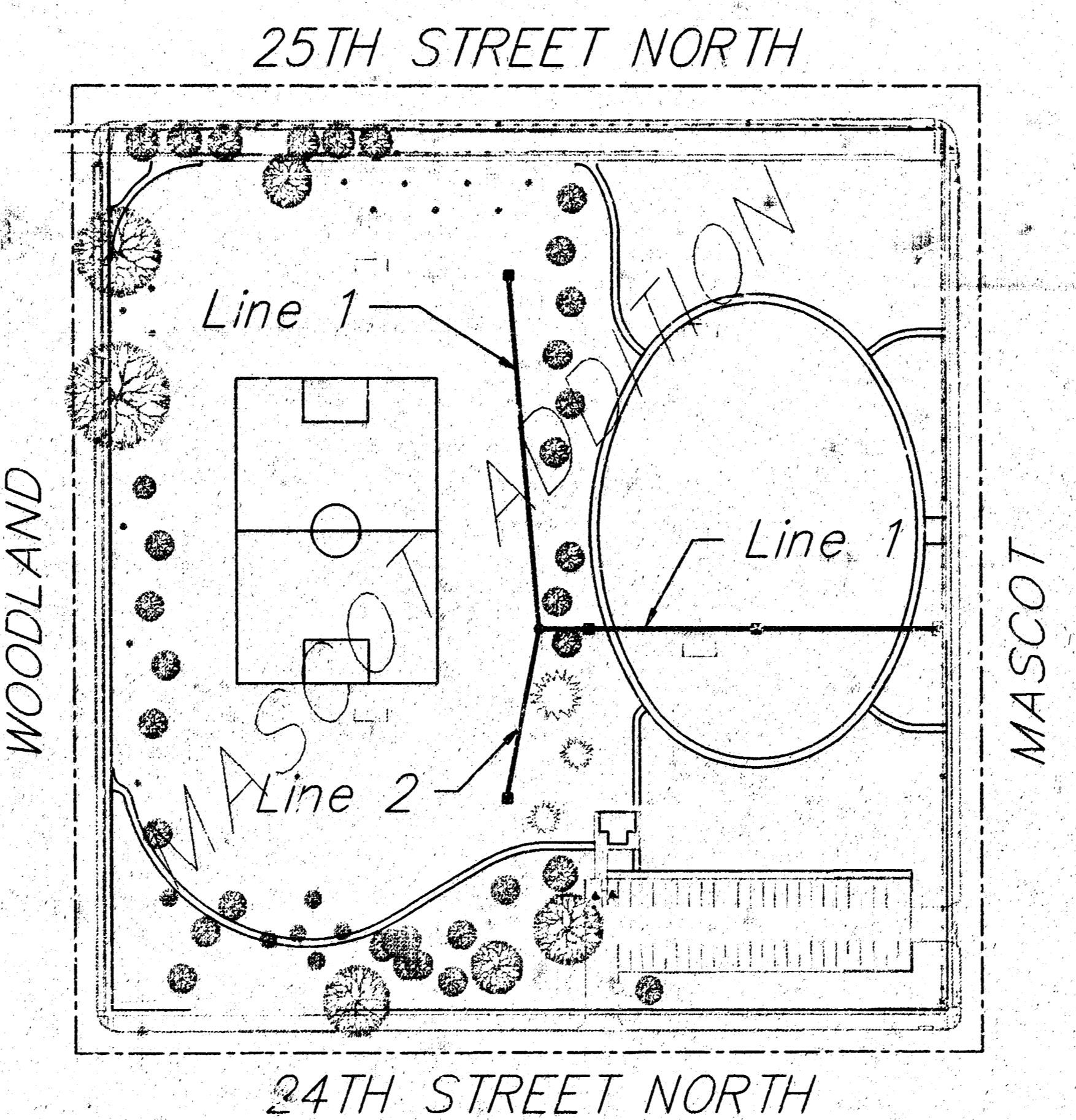
BENCHMARK:

"□" NW TC of Jeanette and 24th Street North
 Elev. = 102.88 City Datum

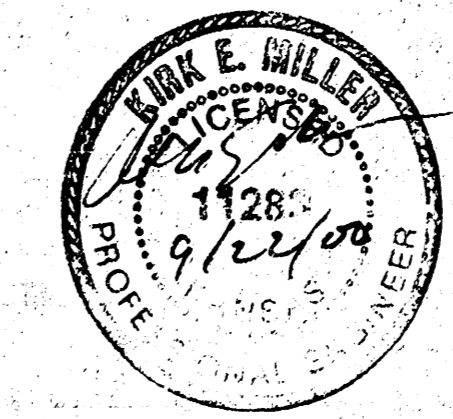
INDEX

- Cover
- Plan and Profile Line 1
- Plan and Profile Line 2
- Drop Inlet Detail

BOOKED
 4-24-01
 D-508
 MCG



LOCATION MAP

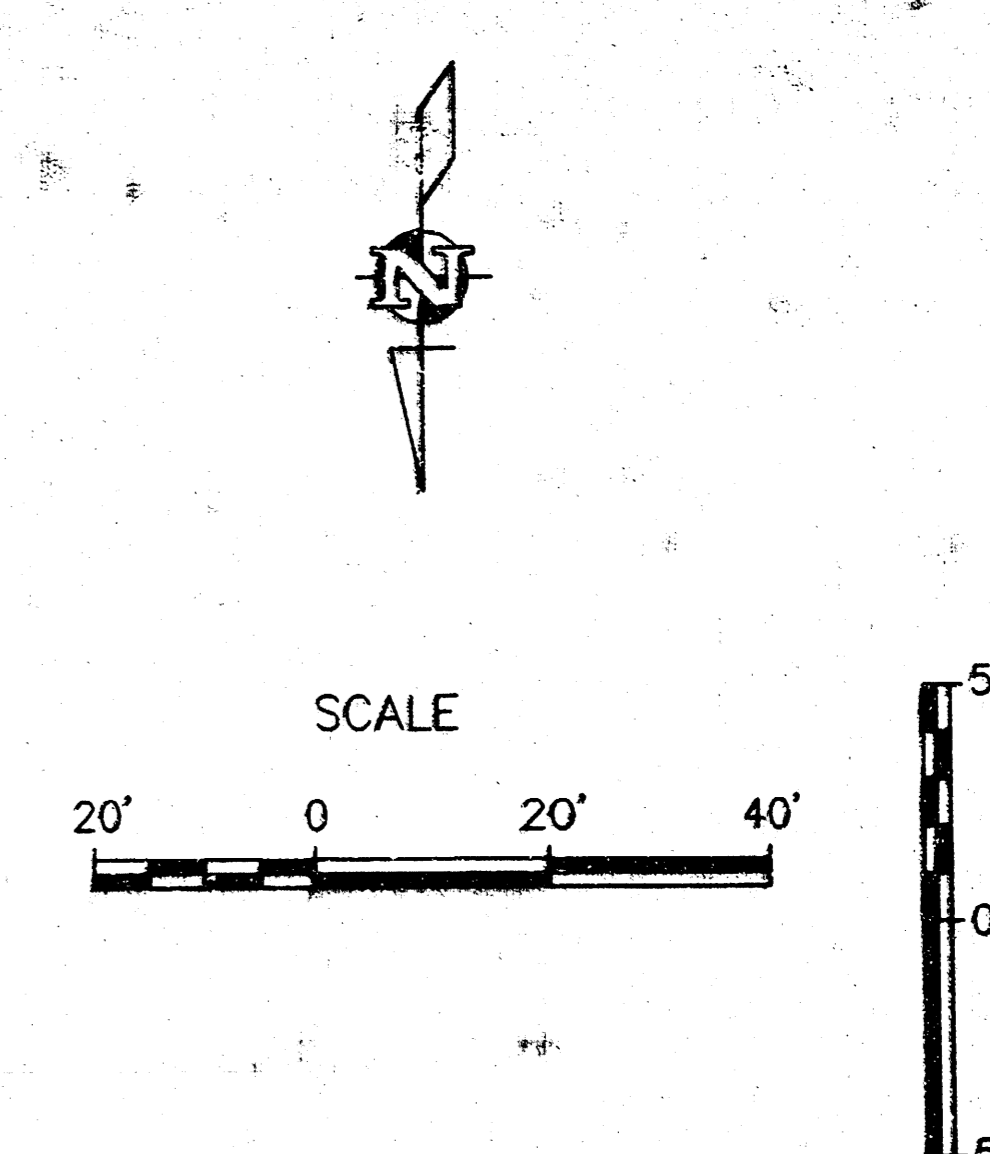
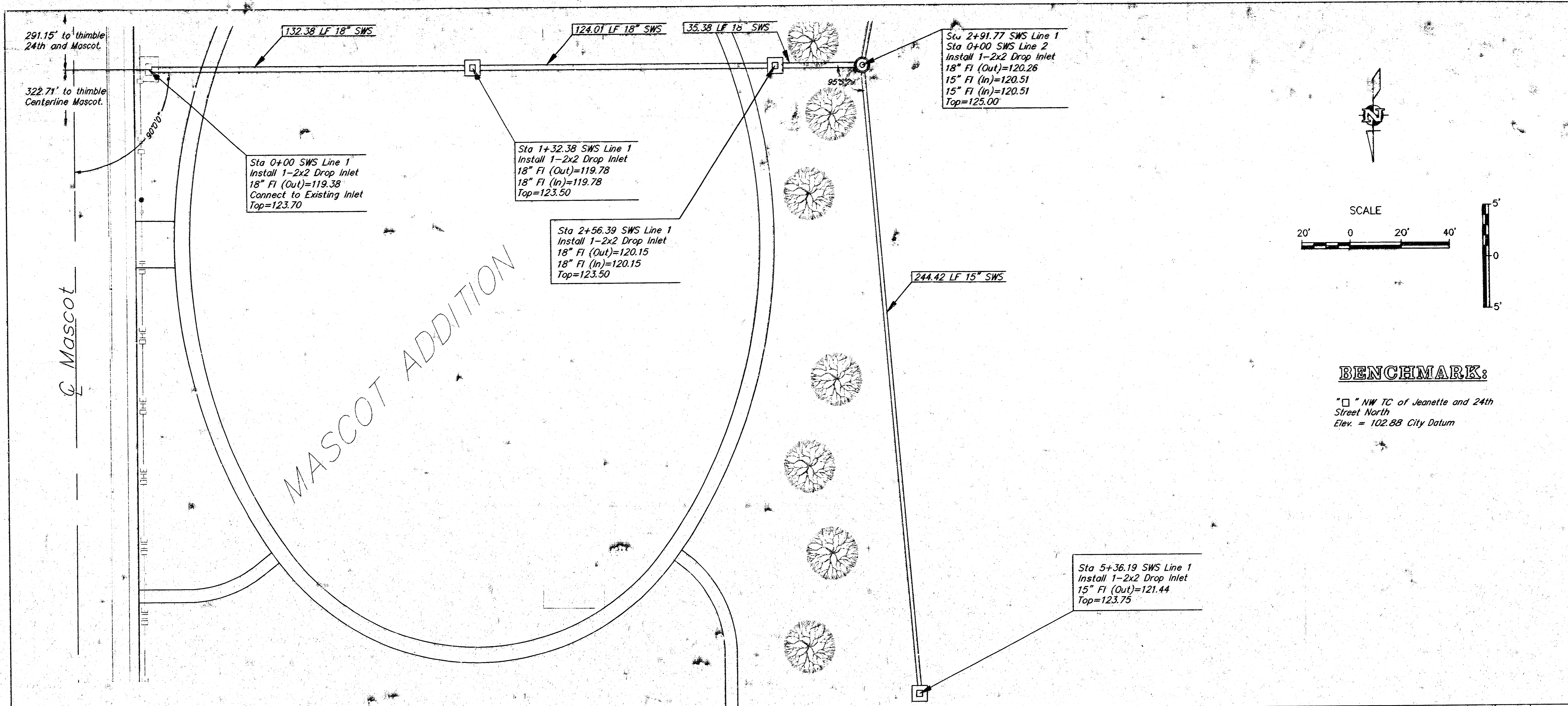


AS-BUILT
 Date: 4/11/01
 Signed: [Signature]

APPROVED AS NOTED BY CITY ENGINEER OF WICHITA
 STORM SEWERS UR 4 9/22/00
 Inspection and testing for this project are to be provided by a Licensed Consulting Engineering Firm under contract with the Owner/Developer. Said inspection is to be in accordance with the City of Wichita standard construction engineering practices and certified by a Licensed Professional Engineer. No work shall be performed in dedicated easements or public right-of-way by the Contractor without such inspection nor shall work be commenced without written authorization by the City Engineer. All construction and materials shall comply with the City of Wichita Specifications and Standards (on file and available in the City Engineer's Office).

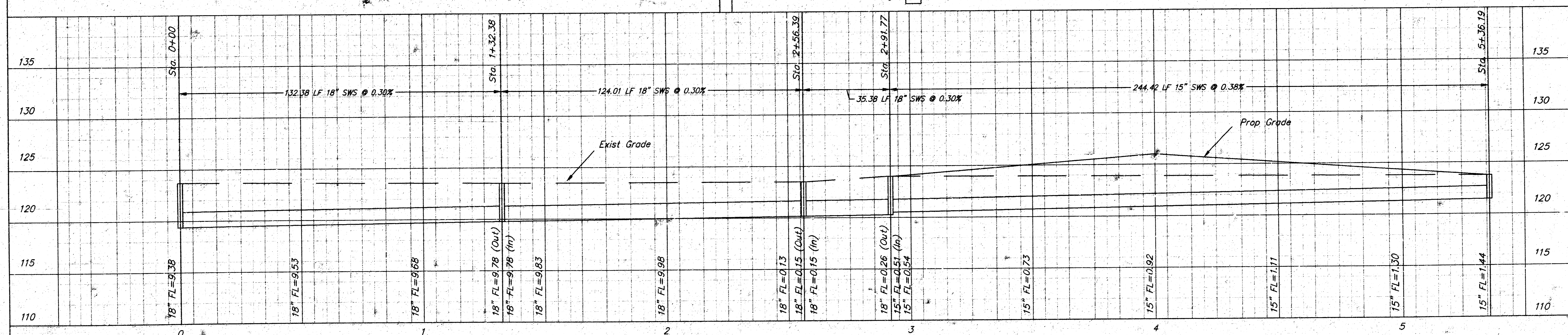
FILENAME: 00313/cov

AUSTIN MILLER P.A.
ENGINEERING SERVICES
 355 N. Wood, Suite 200 Wichita, KS 67202
 316/262-1281 fax 316/262-8772

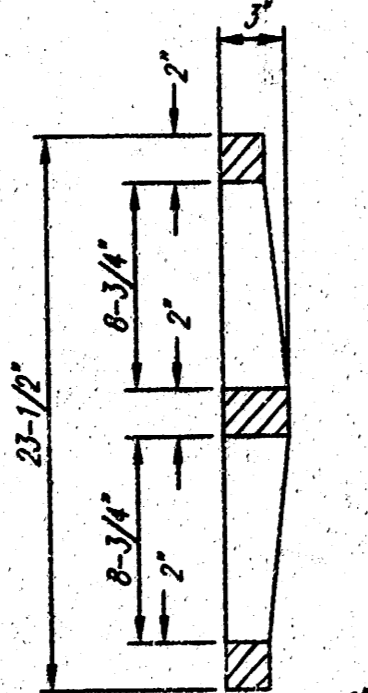
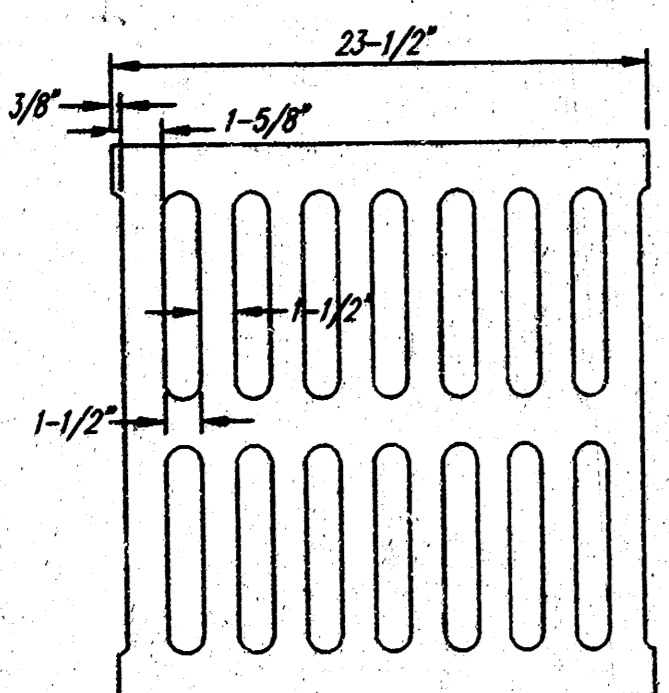
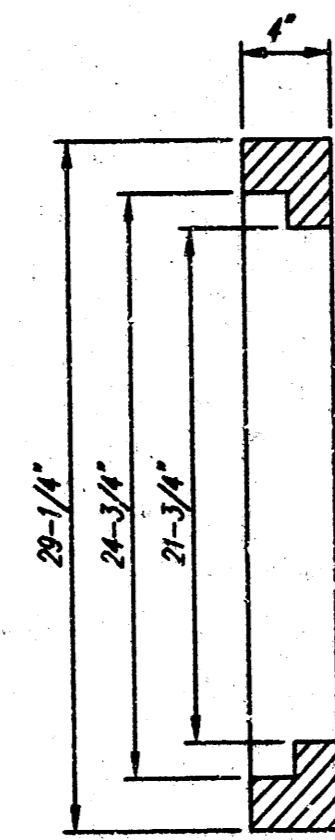
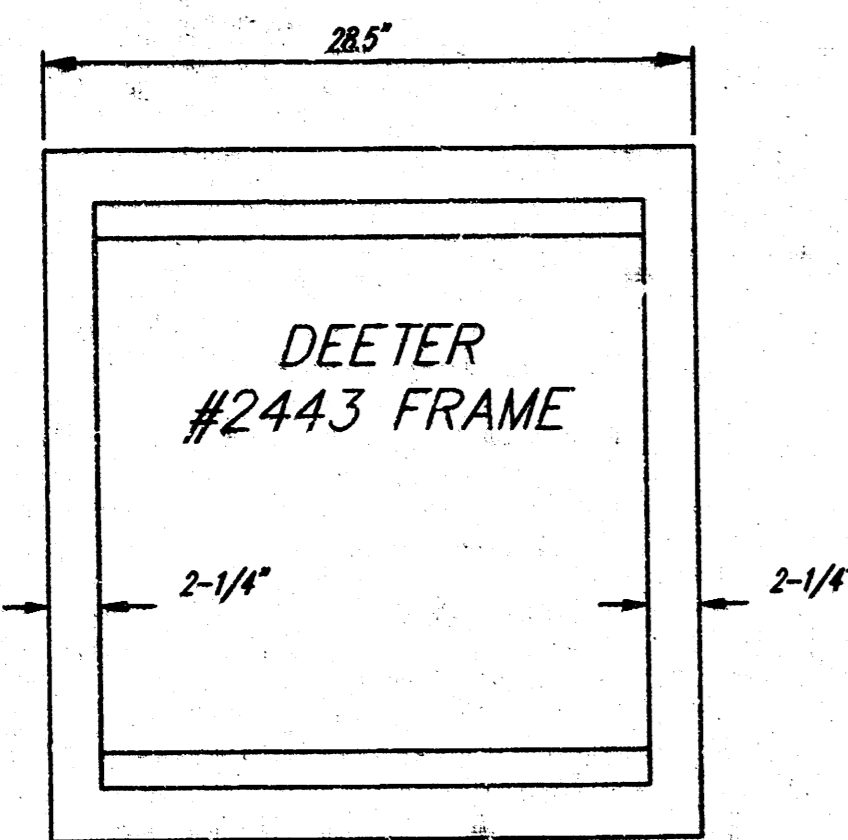


BENCHMARK:

□ " NW TC of Jeanette and 24th
Street North
Elev. = 102.88 City Datum



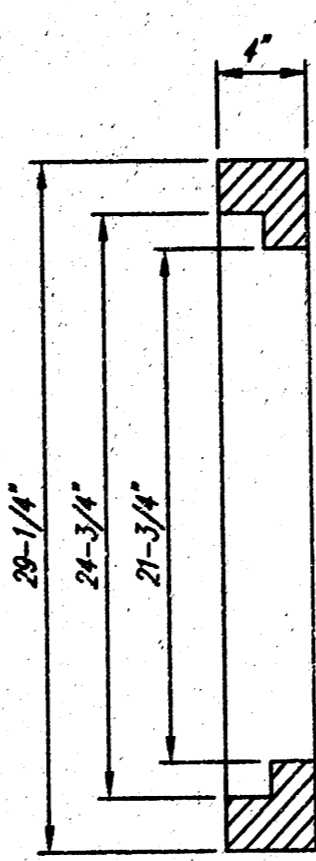
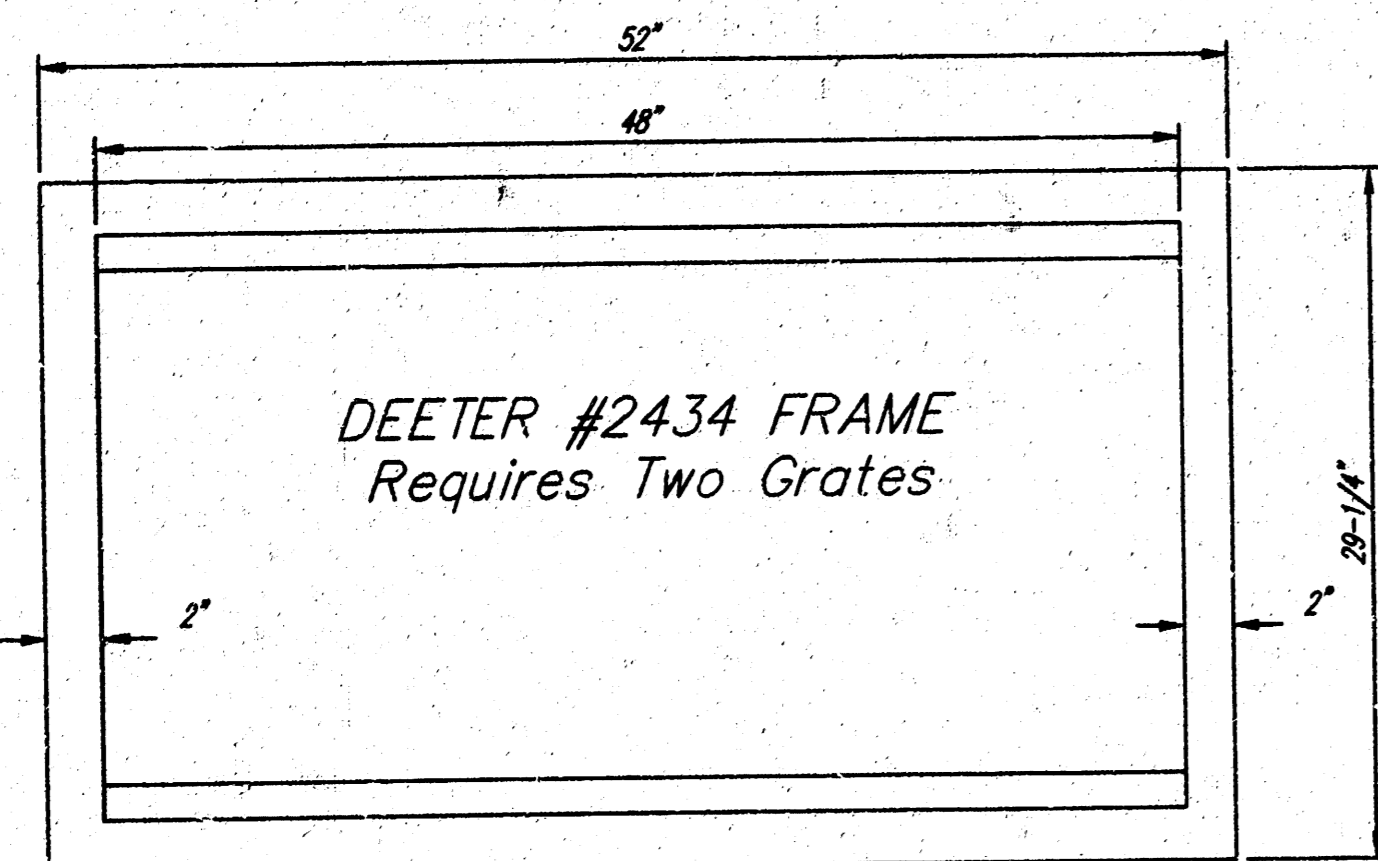
	PROJECT NUMBER		AM NO.	Scheil Park SWS Line 1 Wichita Kansas	SHEET 2 OF 4	REVISED 9/22/00
	DESIGN	DRAWN	FILE			
	rr	bb	pp1	9/18/00	1"=20'	



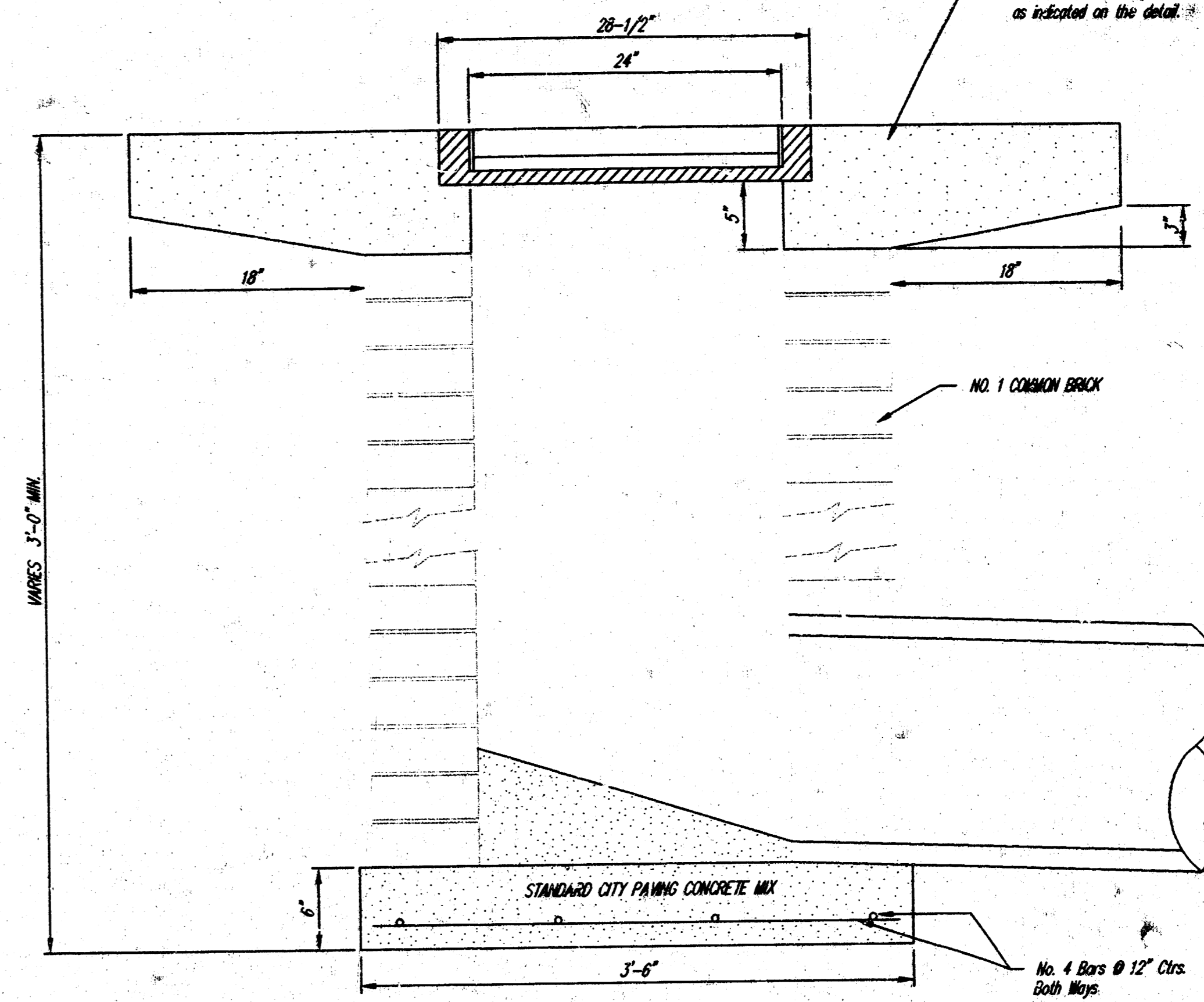
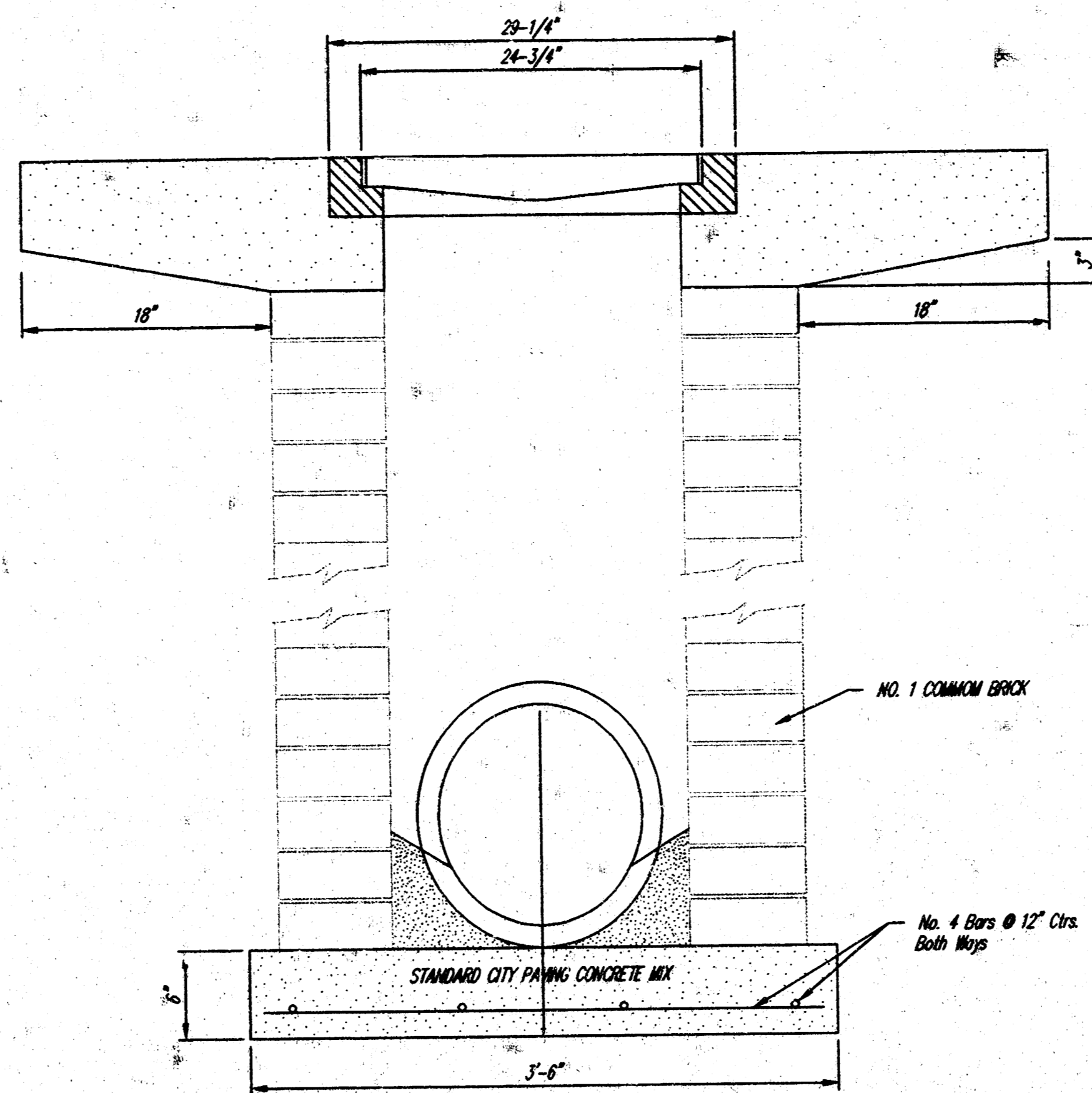
NOTE: Grates shall be imprinted on the top surface with "CITY OF WICHITA" using letters at least 1" in height. Other marking methods may be approved by the engineer.

DEETER #2433 GRATE

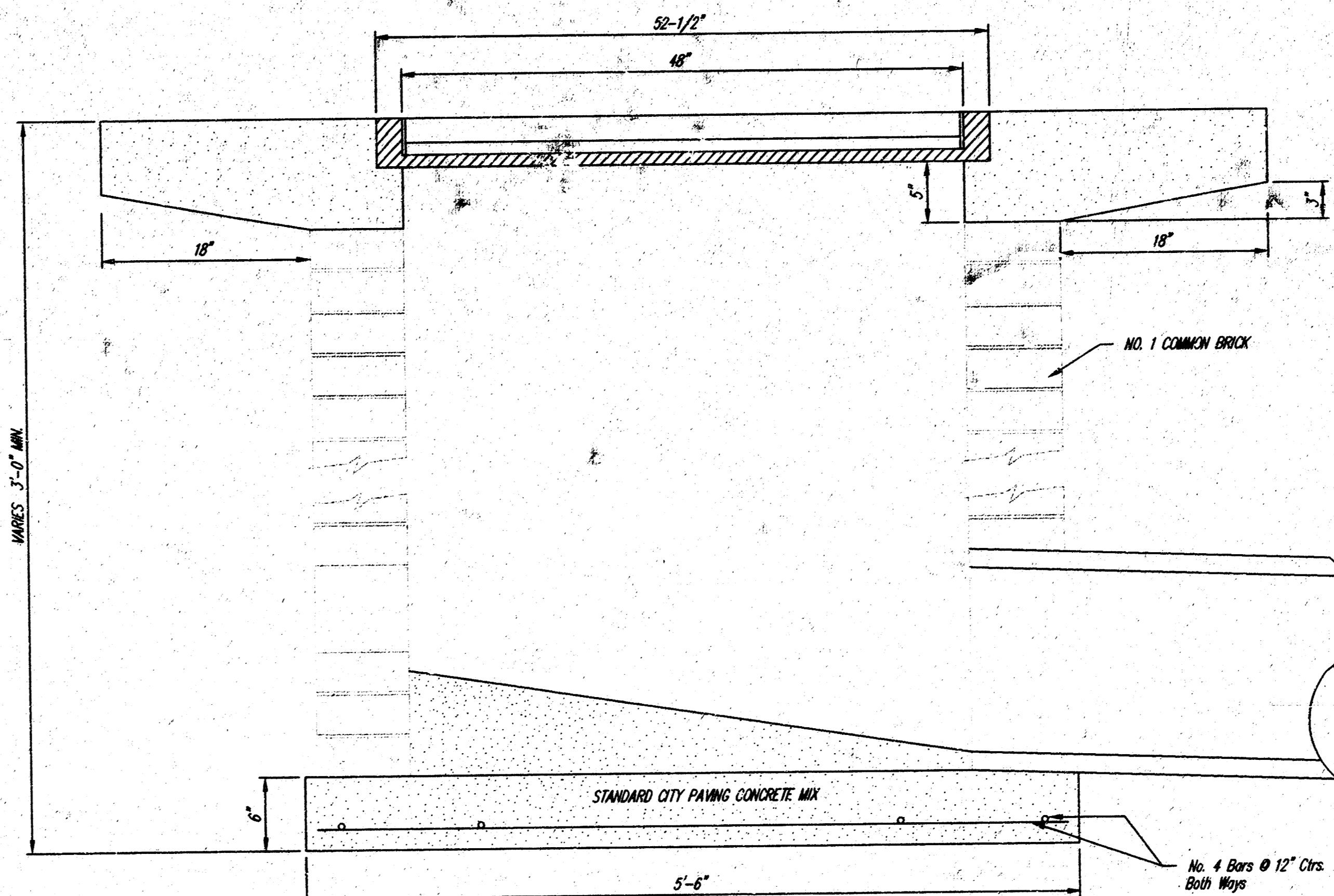
24" x 24" Frame and Grate Detail



Double 24" x 24" Frame Detail



Note: Concrete apron shall be constructed around the inlet when inlet is located in an unpaved area. Where the inlet is adjacent to pavement, the pavement thickness shall be tapered to the inlet a 10' radius as indicated on the detail.



<p>THE CITY OF WICHITA</p> <p>CITY ENGINEER'S OFFICE CITY HALL - SEVENTH FLOOR 402 NORTH MAIN STREET WICHITA, KANSAS 67202 (316) 268-4400 (316) 268-4114 FAX</p>	DROP INLET	
	2' X 2' 2" X 4'	
	M. E. LINDEBAK P.E. - CITY ENGINEER	
	PROJECT NUMBER	INDEX CODE
	797 PPS 607861	
DATE	SHEET 4 OF 4	
MAR 96		