

CITY OF WICHITA, KANSAS

STORM SEWER IMPROVEMENTS

TO SERVE PART OF LOT 1, METRO WEST INDUSTRIAL PARK ADDITION TO WICHITA, KANSAS

PRIVATE PROJECT NO.: 536PPS (607861)

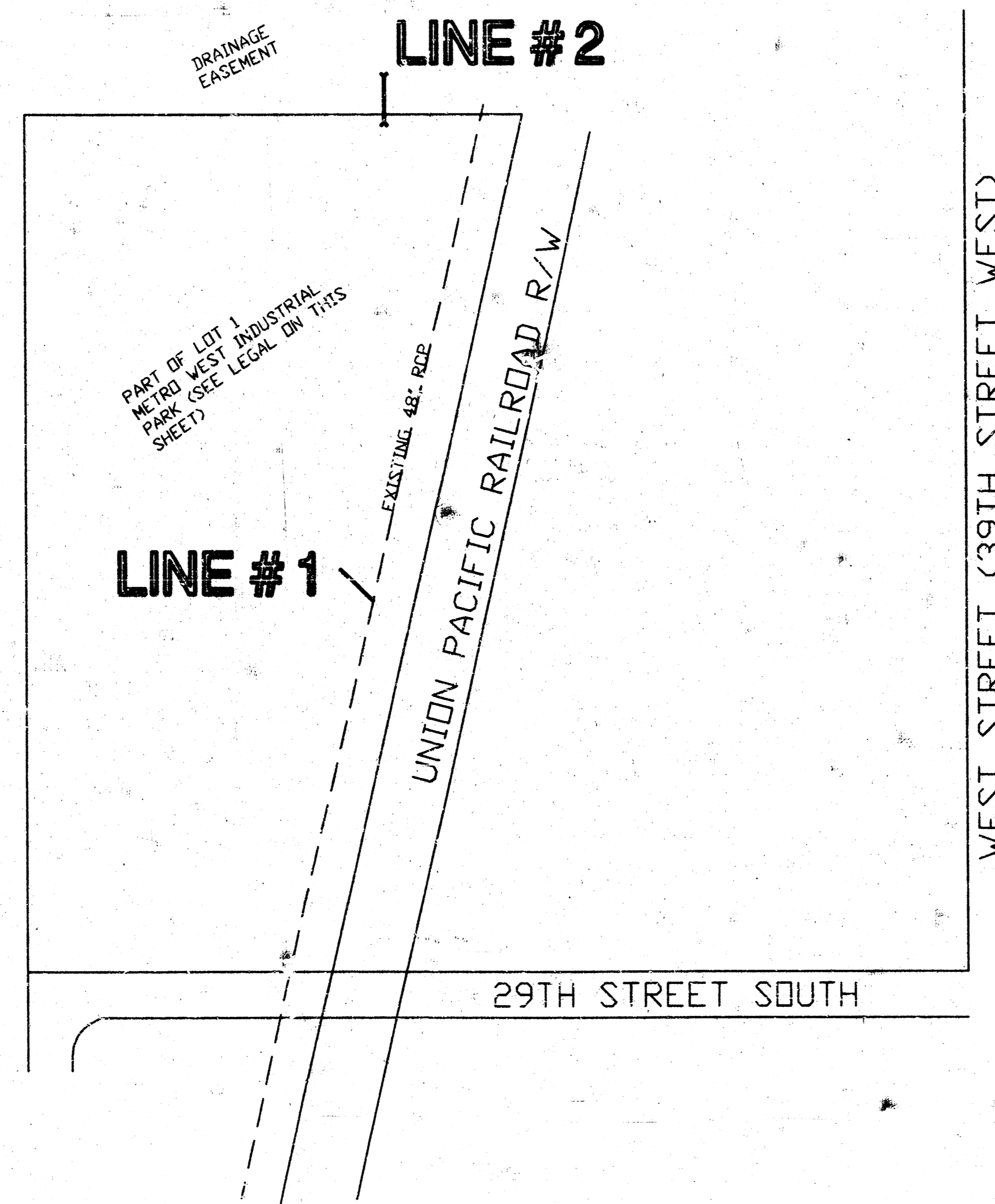
INDEX:

SHEET 1	TITLE SHEET
SHEET 2	PLAN-PROFILE SHEET
SHEET 3	DETAIL SHEET

GENERAL NOTES:

- CONTRACTOR WILL BE REQUIRED TO PROVIDE A MINIMUM ADVANCE NOTICE OF TWENTY-FOUR (24) HOURS TO UTILITY COMPANIES PRIOR TO STARTING ANY EXCAVATION AS FOLLOWS:

KANSAS GAS & ELECTRIC	316-261-6421
KGE GAS SERVICE	316-263-8650
SOUTHWESTERN BELL TELEPHONE CO.	316-263-0434
WICHITA WATER DEPARTMENT	316-269-4555
MULTIMEDIA CABLEVISION	316-269-4270
WICHITA SEWER MAINTENANCE	316-268-4210
KANSAS ONE-CALL	1-687-2470
- ALL WORK SHALL BE DONE IN ACCORDANCE WITH CITY OF WICHITA, KANSAS CITY OF WICHITA STANDARD SPECIFICATIONS.
- EXISTING UTILITIES AND THEIR LOCATIONS, AS SHOWN ON THE PLANS, REPRESENT THE BEST INFORMATION OBTAINABLE FOR DESIGN. LOCATION INFORMATION HAS BEEN OBTAINED FROM THE VARIOUS UTILITY COMPANIES AND IS EITHER FROM COMPANY RECORD DRAWINGS OR COMPANY PROVIDED FIELD LOCATIONS. THE CONTRACTOR WILL BE REQUIRED TO WORK AROUND EXISTING UTILITIES WITHIN THE RIGHT-OF-WAY WHICH DO NOT CONFLICT WITH PROPOSED CONSTRUCTION.
- PURBLE FROM THE REMOVAL OF MISCELLANEOUS STRUCTURES AND EXCESS EXCAVATION WHICH IS TO BE WASTED SHALL BE DISPOSED OF ON SITES TO BE PROVIDED BY THE CONTRACTOR. THESE SITES SHALL BE APPROVED BY THE ENGINEER AS TO SUITABILITY, APPEARANCE AND SITE LOCATION. LOCATIONS THAT, IN THE OPINION OF THE ENGINEER, WILL LEAVE UNSIGHTLY APPEARANCE WILL NOT BE APPROVED.
- THE CONTRACTOR SHALL BE RESPONSIBLE FOR PRESERVING PROPERTY IRONS. THE CONTRACTOR WILL BE REQUIRED TO RE-ESTABLISH ANY PROPERTY IRONS WHICH ARE DAMAGED OR DESTROYED BY HIS CONSTRUCTION OPERATIONS. SUCH IRONS SHALL BE RE-ESTABLISHED BY A LICENSED LAND SURVEYOR OR LICENSED PROFESSIONAL ENGINEER IN ACCORDANCE WITH STATE LAW.
- GRASS AREAS DISTURBED BY CONSTRUCTION OR STORAGE OF MATERIALS SHALL BE REPLANTED EITHER BY SEEDING WITH THE SAME TYPE OF GRASS AS WAS EXISTING PRIOR TO STORM SEWER CONSTRUCTION. SEE 'SPECIAL PROVISIONS' IN THE STANDARD SPECIFICATION NO. 14533 FOR SEEDING AND SODDING OF COOL SEASON AND WARM SEASON GRASSES.



LOCATION MAP

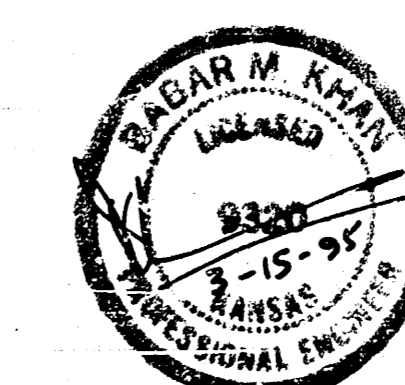
LEGAL DESCRIPTION THAT PART OF LOT 1, METRO WEST INDUSTRIAL PARK ADDITION TO WICHITA, KANSAS, BEGINNING AT THE SOUTHEAST CORNER OF SAID LOT 1; THENCE WEST 419.25 FEET; THENCE NORTH 1122.21 FEET; THENCE EAST 867.19 FEET TO EAST LINE OF SAID LOT 1; THENCE SOUTHWESTERLY 1220.22 FEET TO BEGINNING.

BENCH MARKS:

- Project Control: City of Wichita Disk, 53' East and 44' South of Centerline of both 31st Street South and West Street. Elev. = 103.47 (City of Wichita Datum)
- Bench Mark No. 1: Square cut on curb North side of 29th Street South and 50' east of the East Curb line of 29th Street South Circle. Elev. = 103.55 (City of Wichita Datum)
- Bench Mark No. 2: 'X' cut on top of North end of 48" RCP, 25' West and 56' North of Northeast Property Corner. Elev. = 100.44 (City of Wichita Datum)
- Bench Mark No. 3: Square cut on top of South Curb, East side of Plot, at West end of Southwest Return, 29th Street South and West Street. Elev. = 102.82 (City of Wichita Datum)

NOTE:

City of Wichita Datum = USGS DATUM - 1187.40



NOTE TO CONTRACTOR:

INSPECTION AND TESTING FOR THIS PROJECT IS TO BE PROVIDED BY A LICENSED CONSULTING ENGINEERING FIRM UNDER CONTRACT WITH THE OWNER/DEVELOPER. SAID INSPECTION TO BE IN ACCORDANCE WITH THE CITY OF WICHITA STANDARD ENGINEERING PRACTICES AND CERTIFIED BY A LICENSED PROFESSIONAL ENGINEER. NO WORK SHALL BE PERFORMED BY DEDICATED EASEMENTS OR PUBLIC RIGHT-OF-WAY BY THE CONTRACTOR WITHOUT SUCH INSPECTION NEAR SHALL ANY WORK BE COMMENCED IN DEDICATED EASEMENTS OR PUBLIC RIGHT-OF-WAY WITHOUT WRITTEN AUTHORIZATION BY THE CITY ENGINEER.

APPROVED AS NOTED
BY CITY ENGINEER OF WICHITA:

SANITARY SEWER _____

STORM SEWER VRH 3/12/95

DRIVEWAY APPROACH _____

WATER MAINS _____

PAVING _____

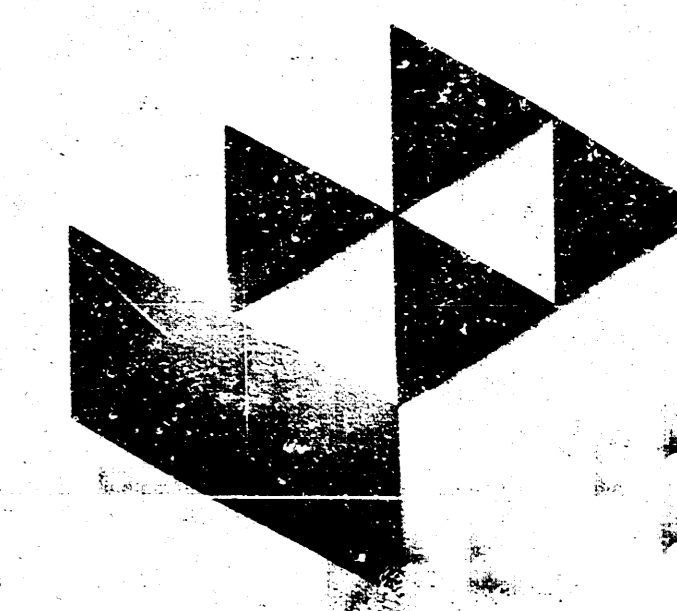
TITLE SHEET

SCALE:	APPROVED:	DRAWN BY: F.A.
DATE:	CHECKED: B.K.	
PROJECT NO:	SHEET NO:	1 OF 3

MUNICIPAL ENGINEERS
254-LAURA, SUITE 201
WICHITA, KANSAS 67211
316-262-3842

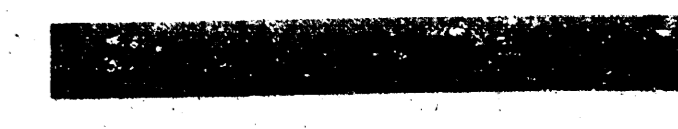
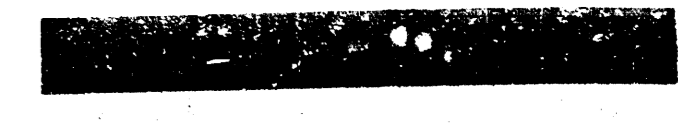
MICHAEL E. LINDEBAK, P.E., CITY ENGINEER

AS BUILT ; 10-25-95 ; B.K.



GessenLivingston

Architecture
438 South Emporia
Wichita, KS 67202
Tel (316) 265-4307
Fax (316) 265-5148

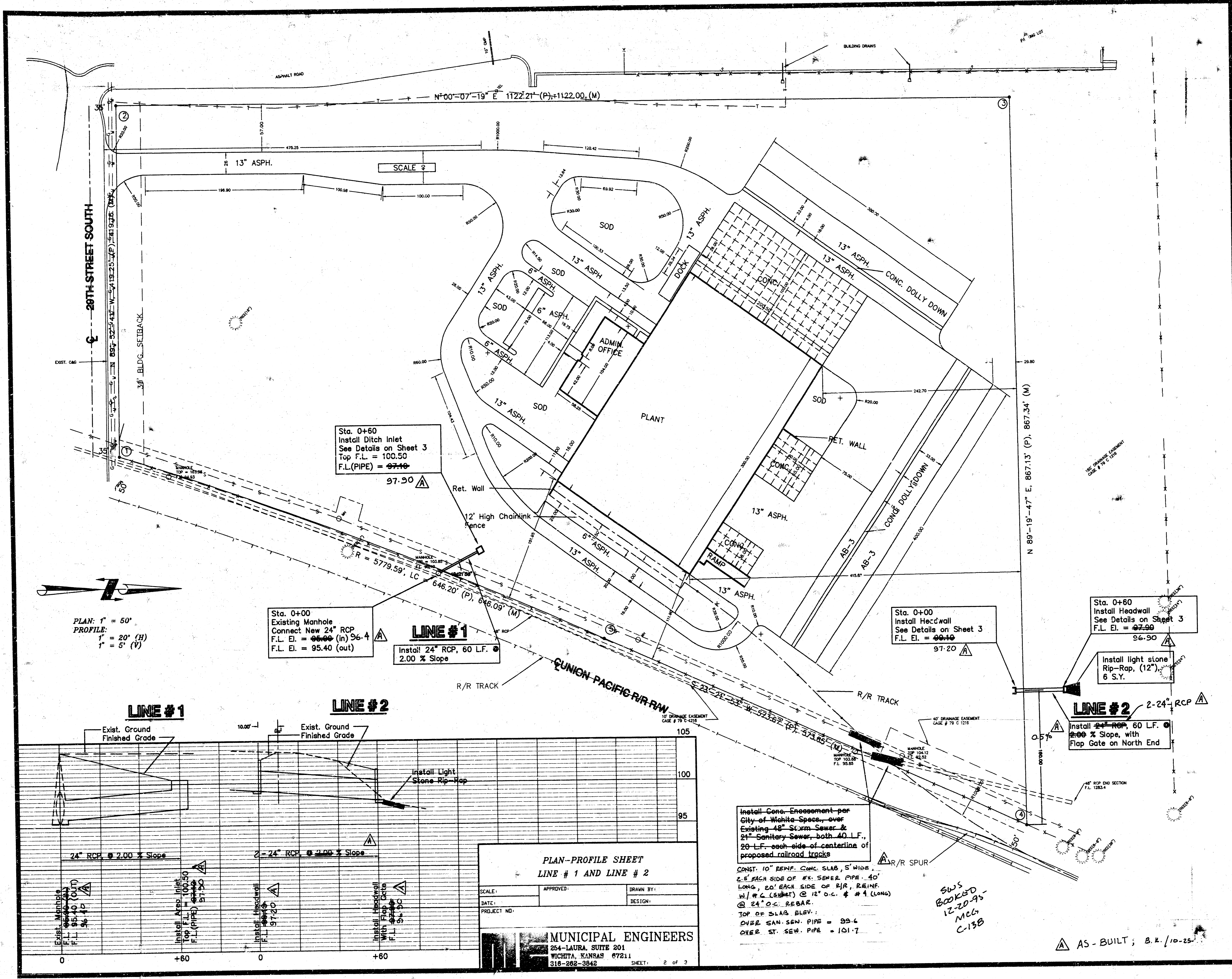
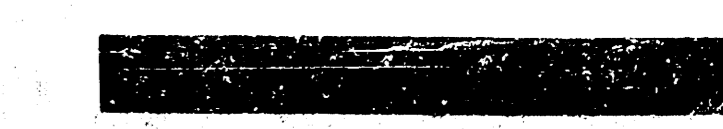


WICHITA RECYCLING PLANT
WICHITA KANSAS

Weyerhaeuser Company



JOB NO. _____
DATE _____
DRAWN _____
CHECKED _____



PLAN: 1" = 50'
PROFILE: 1" = 20' (H)
1" = 5' (V)

Sta. 0+60
Install Ditch Inlet
See Details on Sheet 3
Top F.L. = 100.50
F.L.(PIPE) = 97.10

Sta. 0+00
Existing Manhole
Connect New 24" RCP
F.L. El. = 95.00 (in) 96.4
F.L. El. = 95.40 (out)

LINE #1
Install 24" RCP, 60 L.F. @
2.00 % Slope

Sta. 0+00
Install Headwall
See Details on Sheet 3
F.L. El. = 97.10

Sta. 0+60
Install Headwall
See Details on Sheet 3
F.L. El. = 97.90

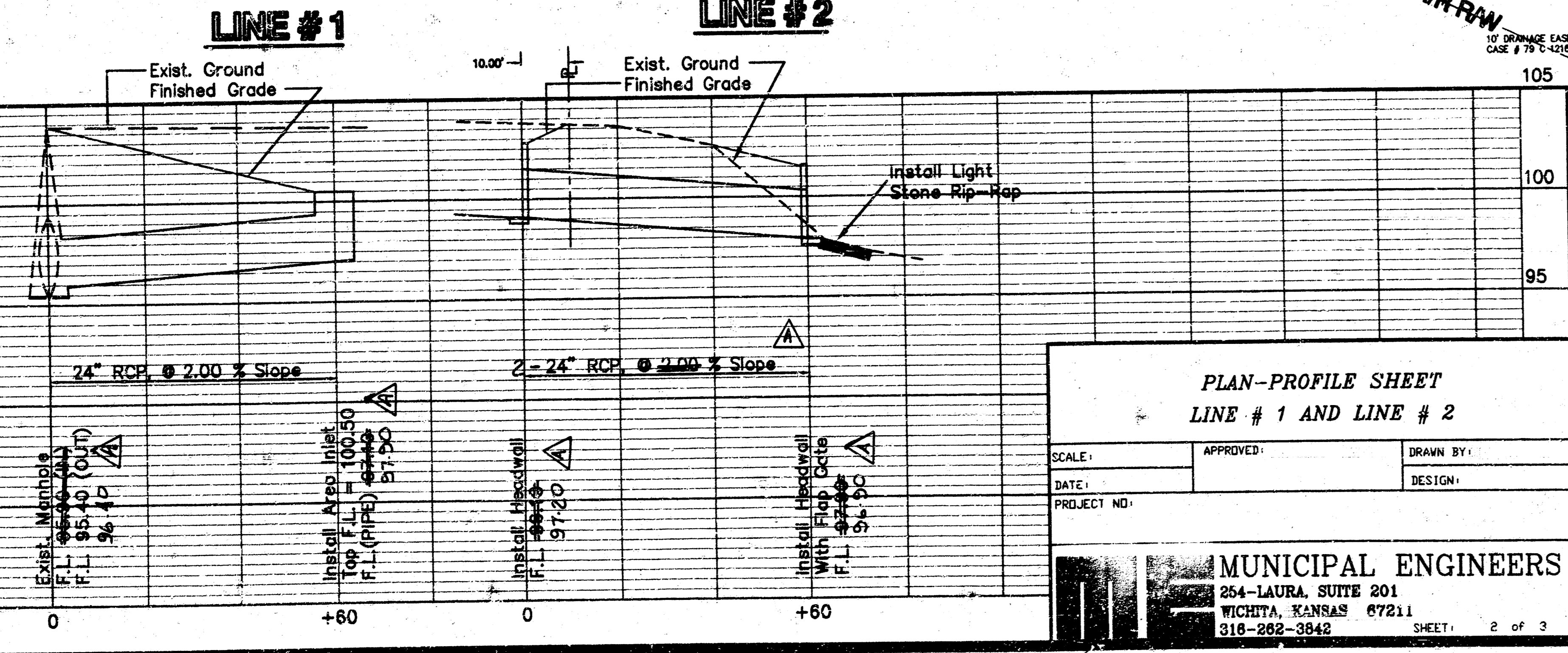
Install light stone
Rip-Rap, (12")
6 S.Y.

LINE #2
2-24" RCP @
2.00 % Slope, with
Flap Gate on North End

Install Conc. Encasement per
City of Wichita Specs, over
Existing 48" Storm Sewer &
21" Sanitary Sewer, both 40 L.F.,
20 L.F. each side of centerline of
proposed railroad tracks
CONST. 10" REINF. CONC. SLAB, 5" WIDE,
2.5' EACH SIDE OF EX. SEWER PIPE. 40'
LONG, 20' EACH SIDE OF R/R, REINF.
W/ #2 (SUBMIT) @ 12" O.C. & #4 (LONG)
@ 24" O.C. REBAR.
TOP OF SLAB BLEV.
OVER SAN. SEW. PIPE = 99.6
OVER ST. SEW. PIPE = 101.7

SWS
BOOKED
12-20-95
MCG
C-138

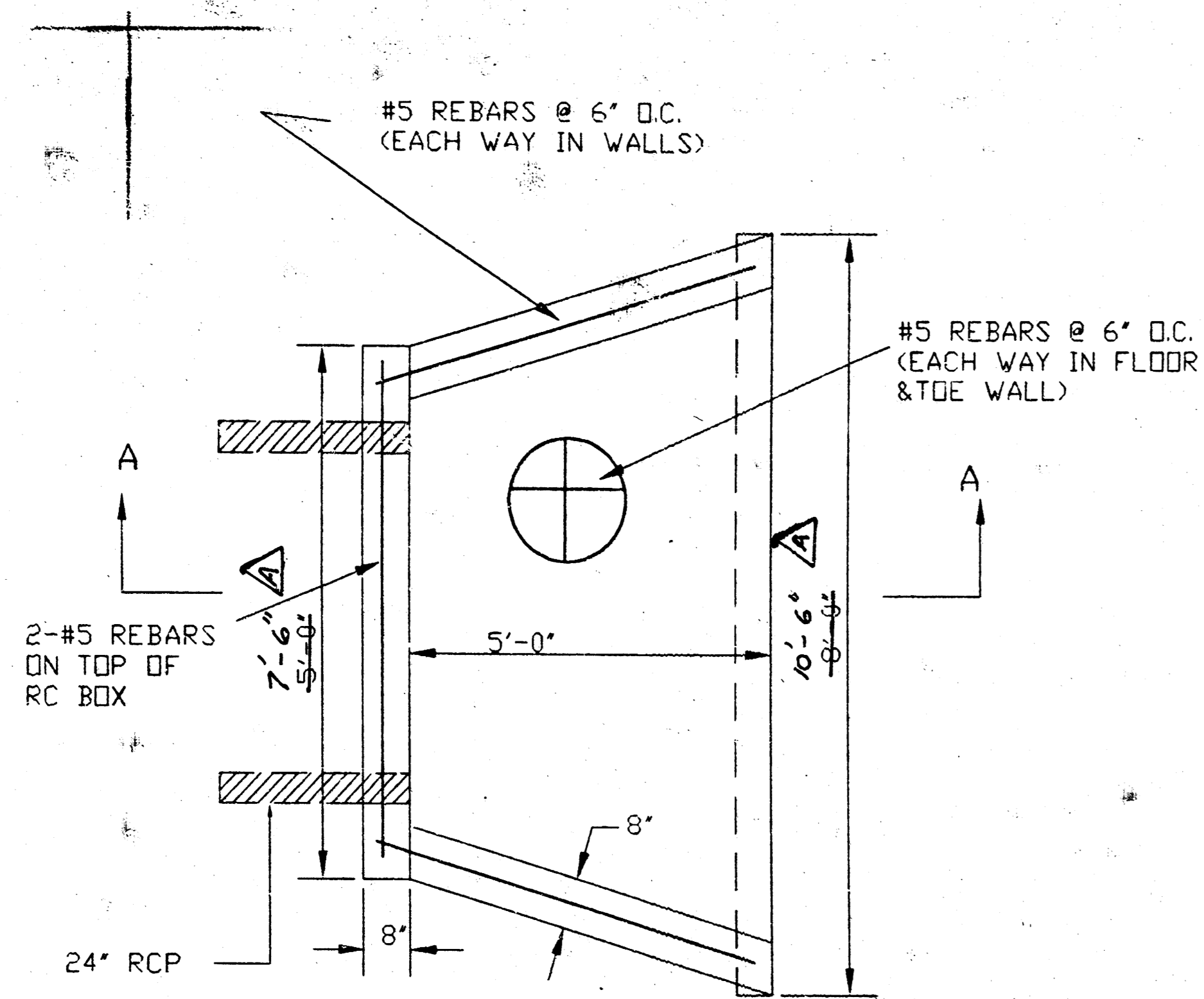
AS-BUILT; B.L. / 10-25



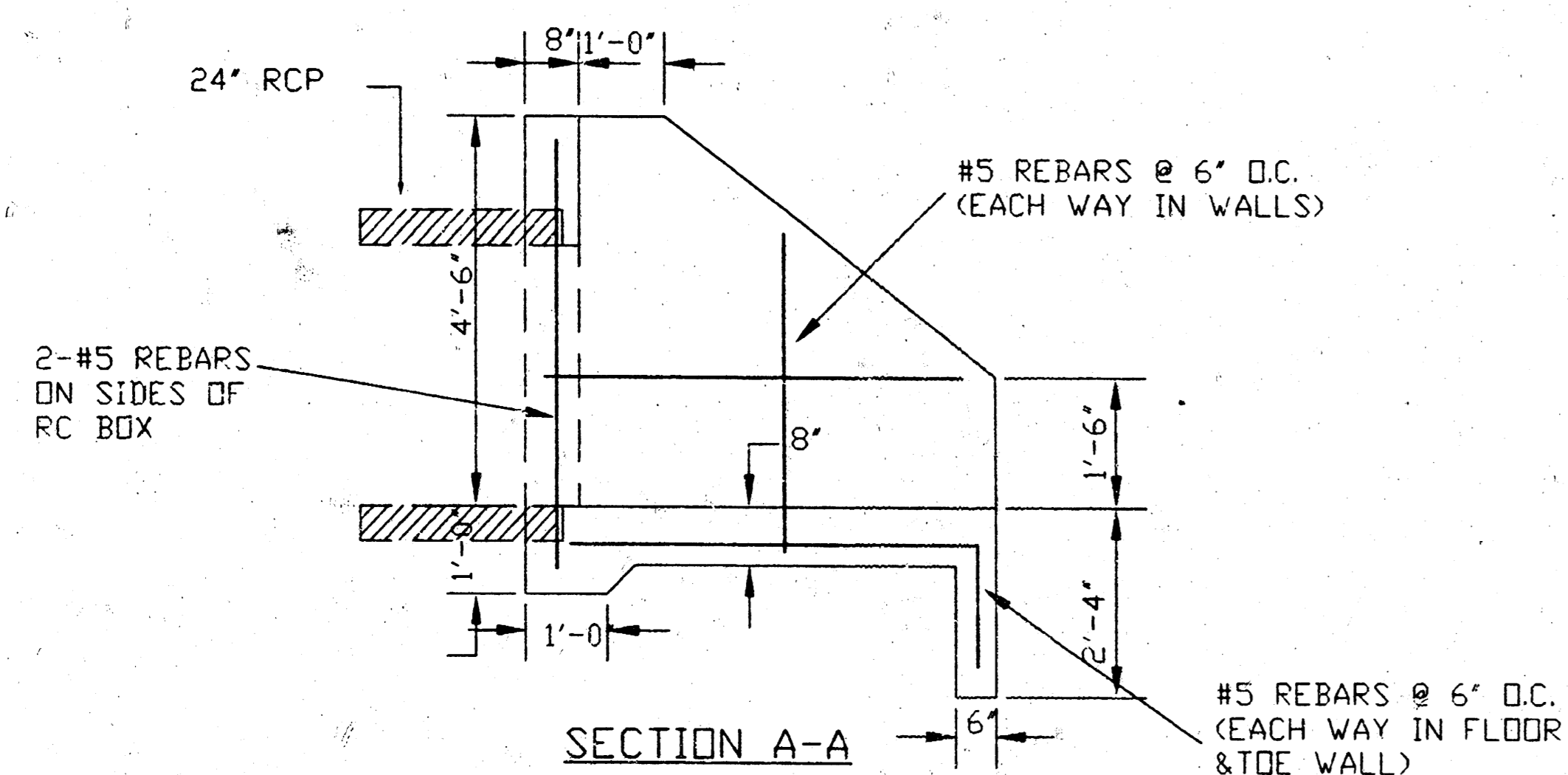
PLAN-PROFILE SHEET
LINE # 1 AND LINE # 2

SCALE:	APPROVED:	DRAWN BY:
DATE:		DESIGN:
PROJECT NO.:		

MUNICIPAL ENGINEERS
254-LAURA, SUITE 201
WICHITA, KANSAS 67211
316-262-3842 SHEET 2 OF 3



PLAN

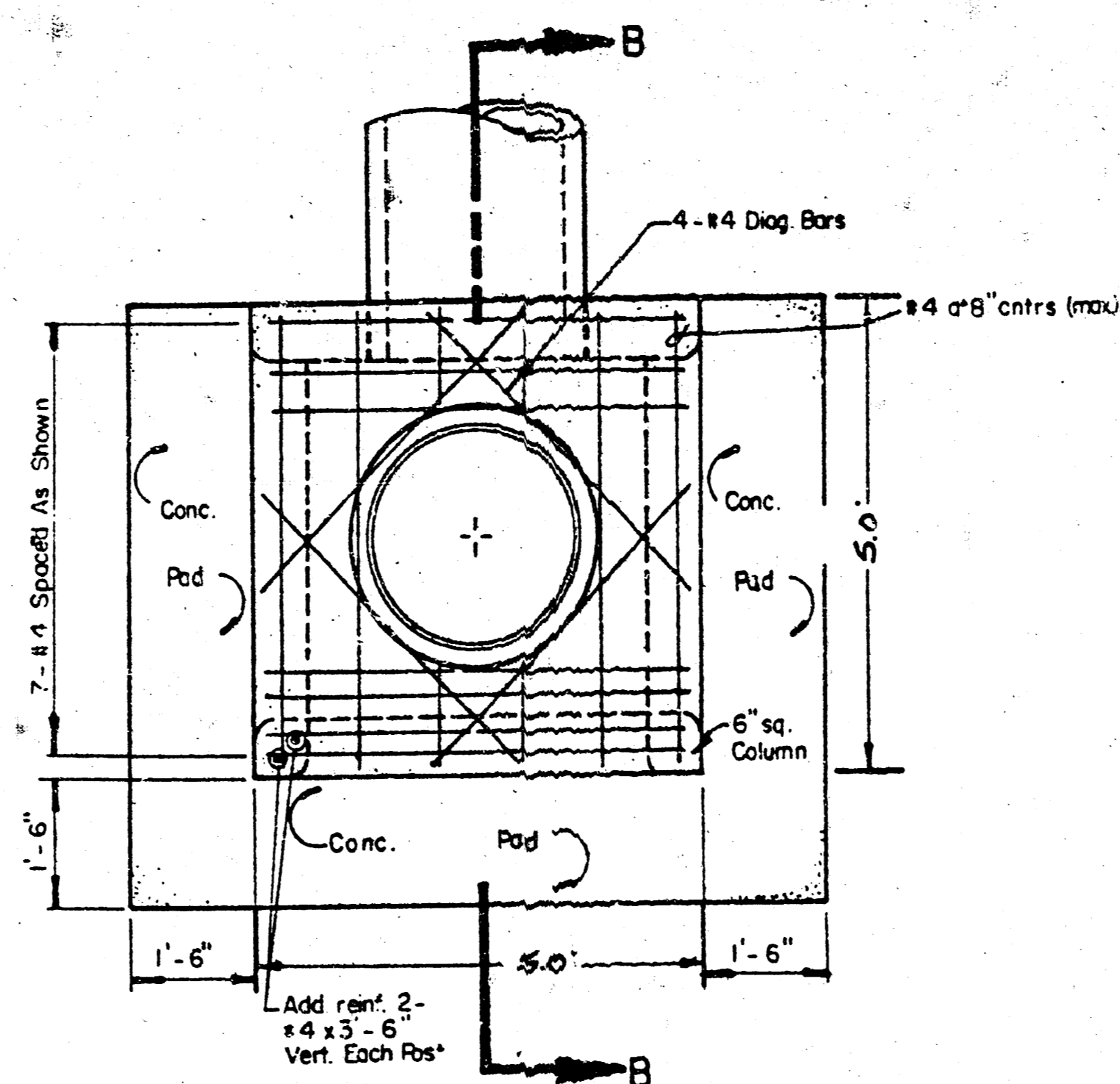


SECTION A-A

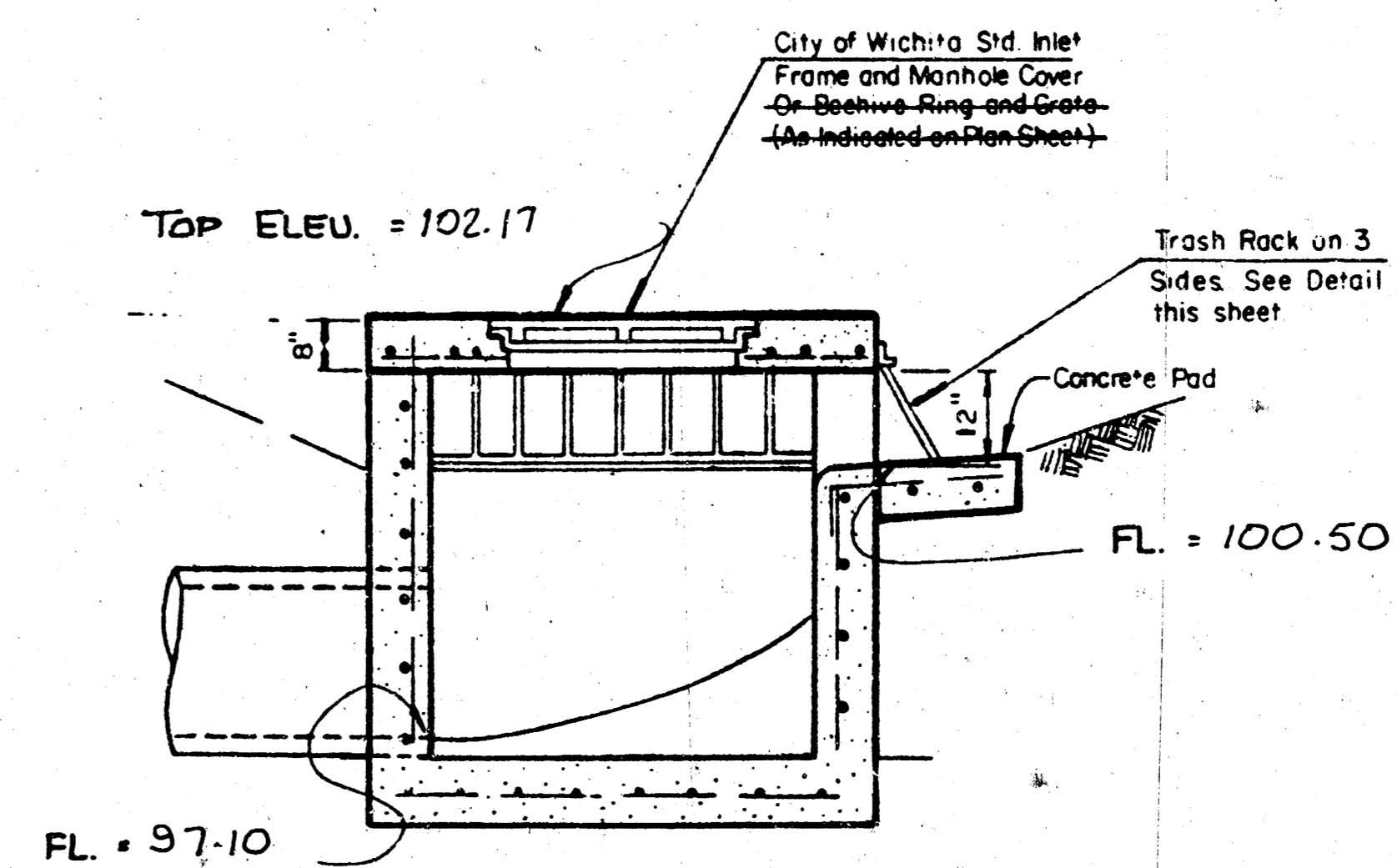
GENERAL NOTES

1. USE CONCRETE WITH 4,000 PSI COMPRESSIVE STRENGTH @ 28 DAYS.
2. USE 60 KSI REBARS.
3. USE NENNAH R-5050-SF24 OR EQUAL WHERE 24" FLAP GATE IS REQUIRED ON PLANS.

HEADWALL
NO SCALE

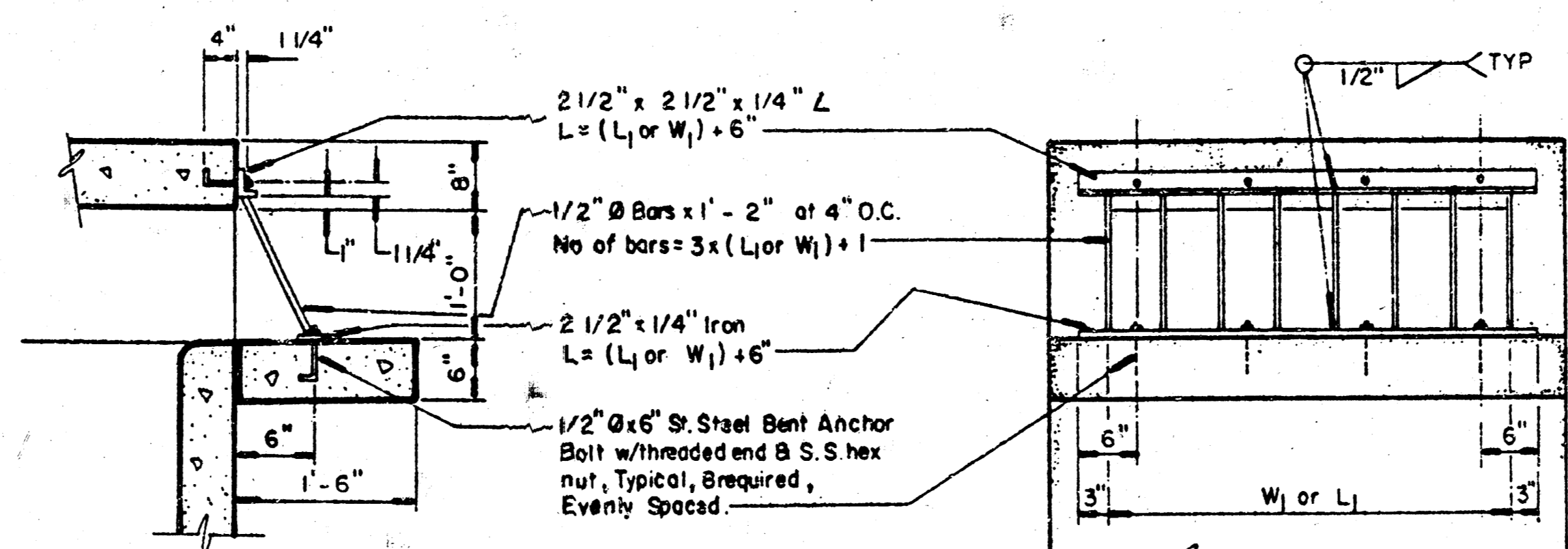


PLAN



SECTION B-B

DITCH INLET TYPE 1-A



NOTE: Hot Dip Galvanized Trash Rack after Assembly.

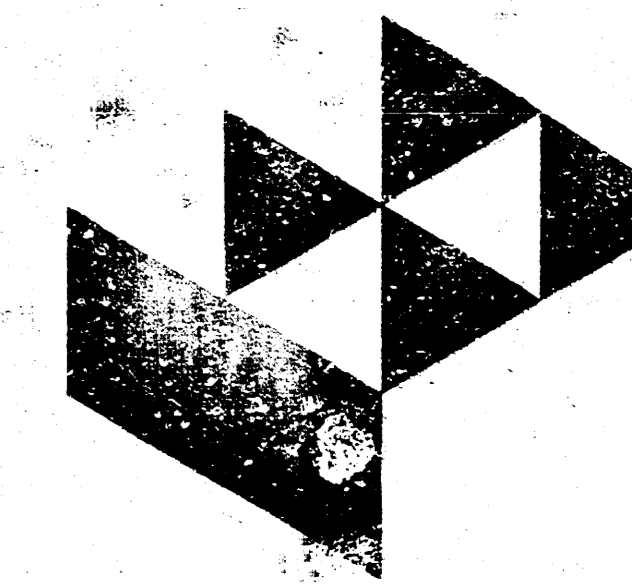
TRASH RACK DETAIL

FOR USE WITH TYPE 1-A DITCH INLET
(NO SCALE)

STORM SEWER IMPROVEMENTS TO SERVE
PART OF LOT 1, METRO WEST INDUSTRIAL PARK
ADDITION
PRIVATE PROJECT NO.: 536 PPS (607861)

AS BUILT: B.K., 10-25-95

Municipal Engineers
254-LAURA, SUITE 201
WICHITA, KANSAS 67211
316-288-9842



Gesson Livingston

Architecture
420 South Emporia
Wichita, KS 67262
Tel (316) 265-5387
Fax (316) 265-5646

Meyerhouser Company

WICHITA RECYCLING PLANT
WICHITA KANSAS

JOB NO.	3
DATE	OF
DRAWN	3
CHECKED	

APR 13 1995

SC 6 APR 13 1995