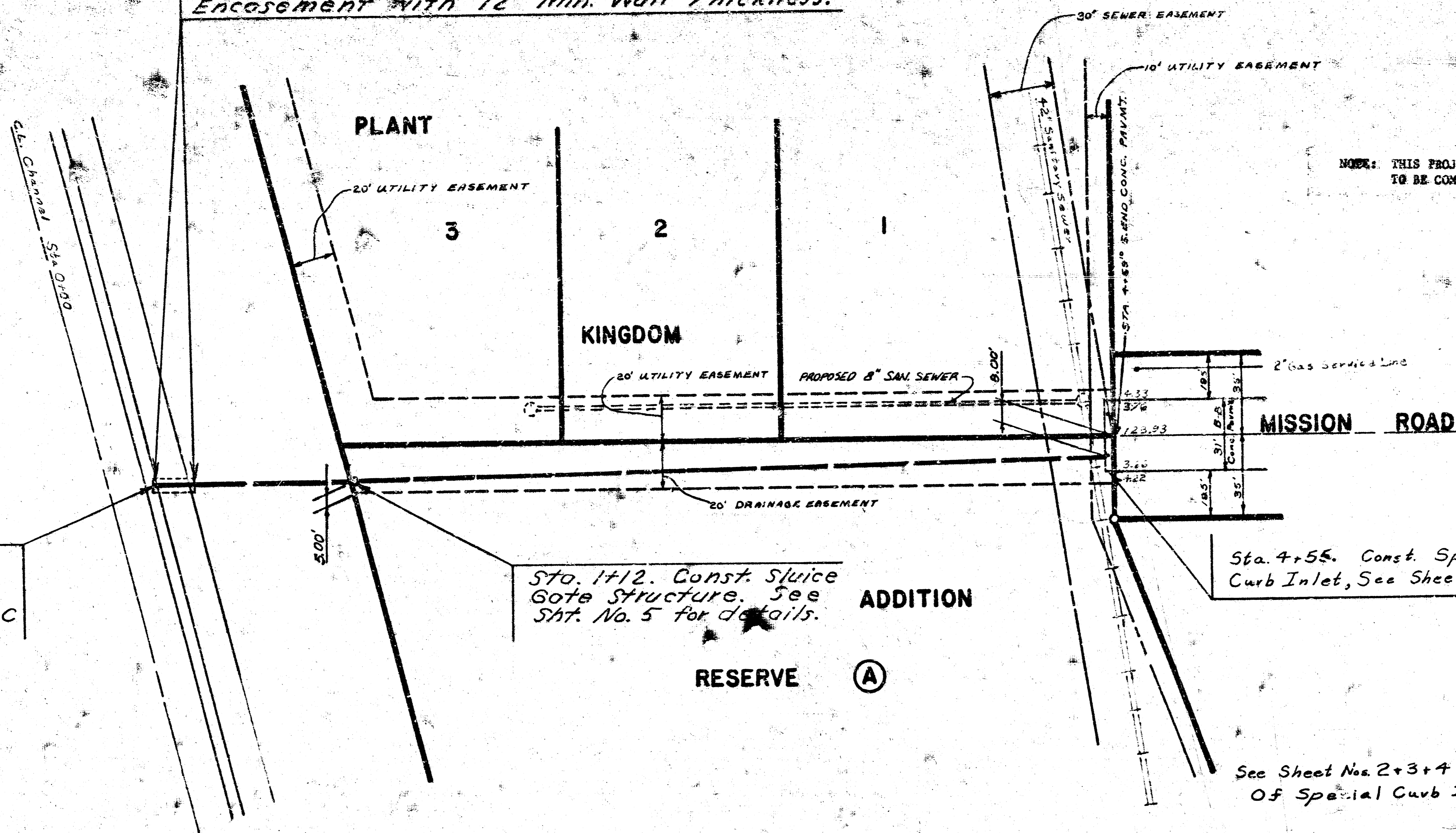


BM 12+34 "G" In Globe South End West Curb Mission Road.

Sta. 0+21 to Sta. 0+41. Const. Reinf. Conc. Encasement with 12" Min. Wall Thickness.



NOTE: THIS PROJECT SHALL BE COORDINATED WITH THE SANITARY SEWER PROJECT TO BE COMPLETED ON ADJACENT UTILITY EASEMENT.

Sta. 0+21. Begin 30" R.C.P. of 36" C.M.P. Install Flap Gate. Flap Gate to be Armco Model 20-C or approved equal.

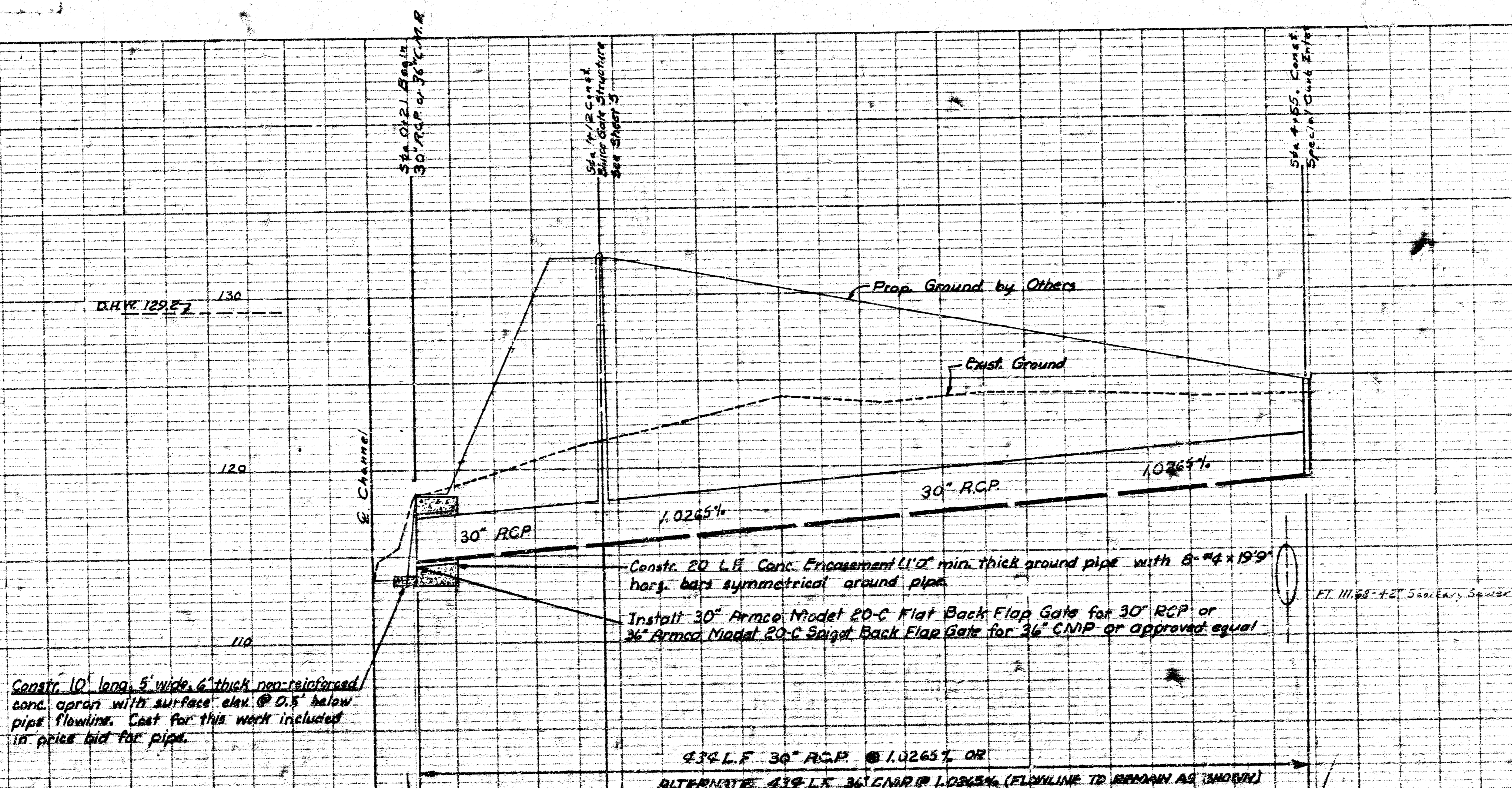
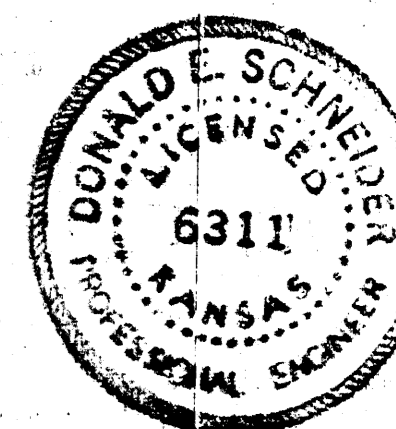
Sta. 1+12. Const. Sluice Gate Structure. See SH. No. 5 for details.

Sta. 4+55. Const. Special Curb Inlet. See Sheet No. 2.

Plan Scale: 1"=40'
Profile Scale: Vert. 1"=5'
Horiz. 1"=40'

NOTE: MATERIAL EXCAVATED FROM TRENCH SHALL BE USED AS BACKFILL MATERIAL AND COMPACTED TO ORIGINAL CUT DENSITY BETWEEN STA. 0+21 AND STA. 1+12. COMPACTION OF THIS BACKFILL SHALL NOT BE PAID FOR DIRECTLY AND SHALL BE CONSIDERED AS SUBSIDIARY TO THE OTHER ITEMS OF WORK. CORRUGATED METAL PIPE SHALL CONFORM TO TYPE 1 OR TYPE 2 OF SECTION R6 OF THE KANSAS STATE HIGHWAY COMMISSION 1966 STANDARD SPECIFICATIONS. THE CORRUGATED METAL PIPE SHALL HAVE TYPE "B" COATING AS SPECIFIED IN SECTION R6 OF SAID HIGHWAY SPECIFICATIONS. ALL PIPE FURNISHED FOR THIS PROJECT SHALL BE OF THE SAME TYPE.

See Sheet Nos. 2+3+4 For Details Of Special Curb Inlet.

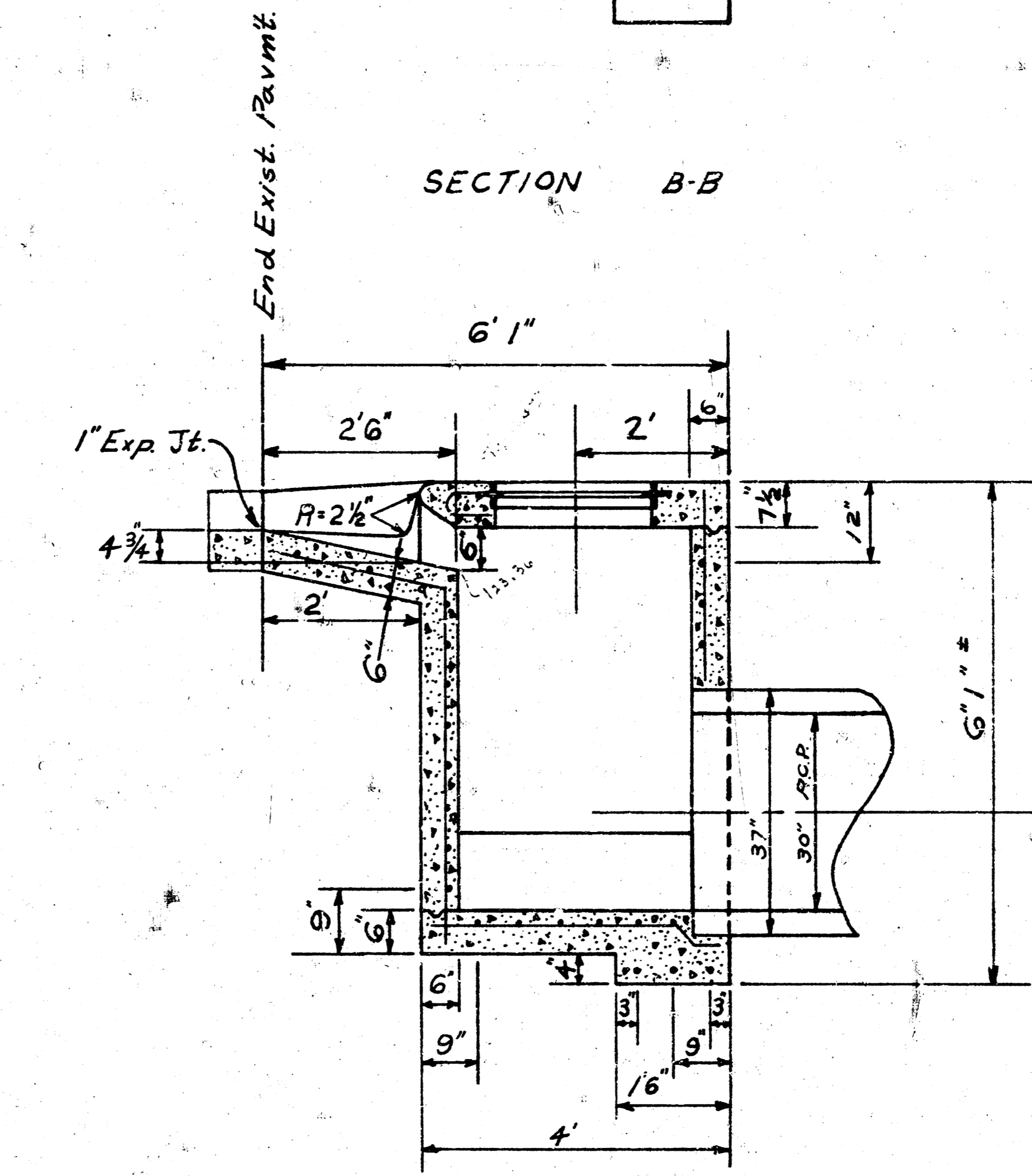
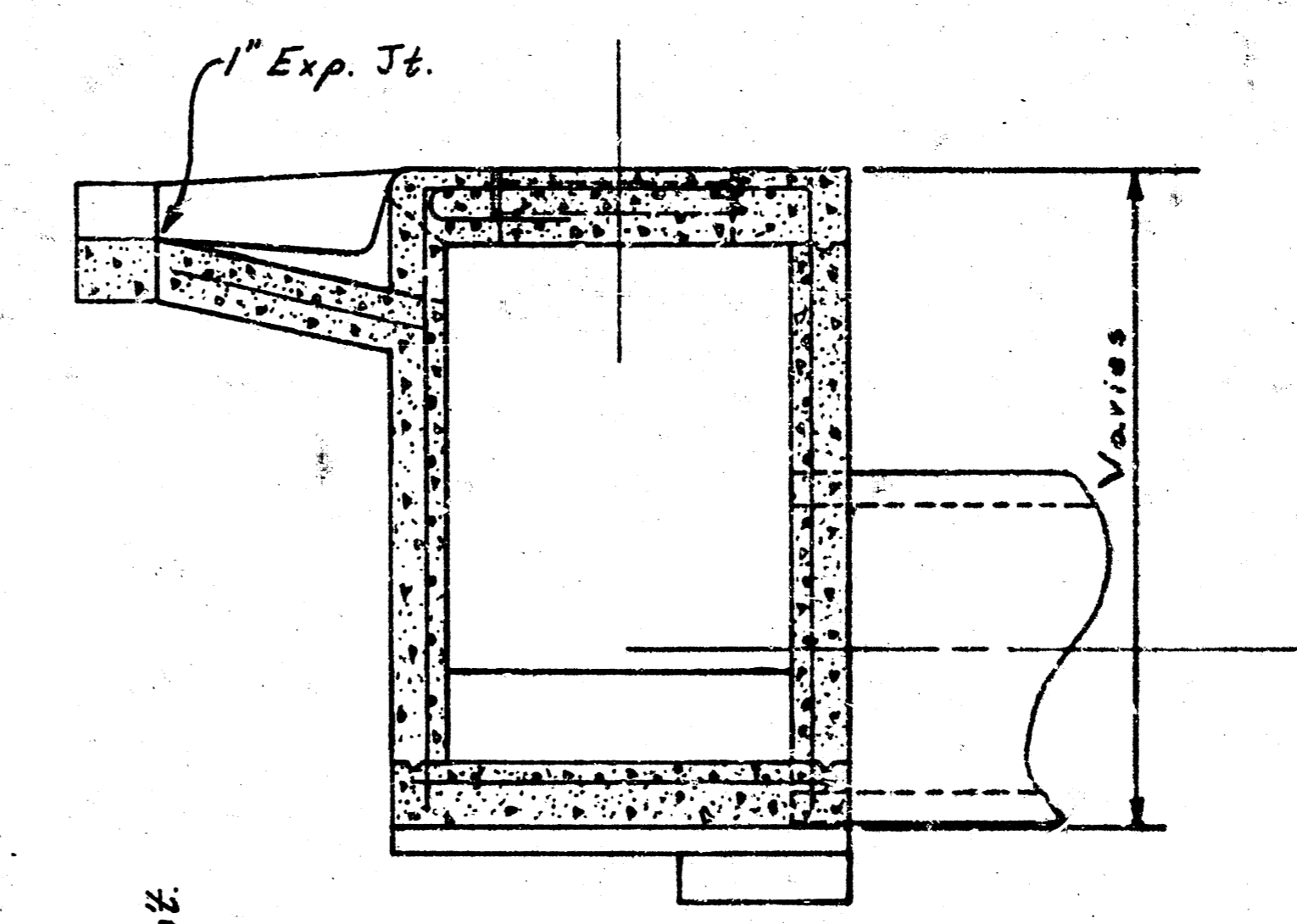
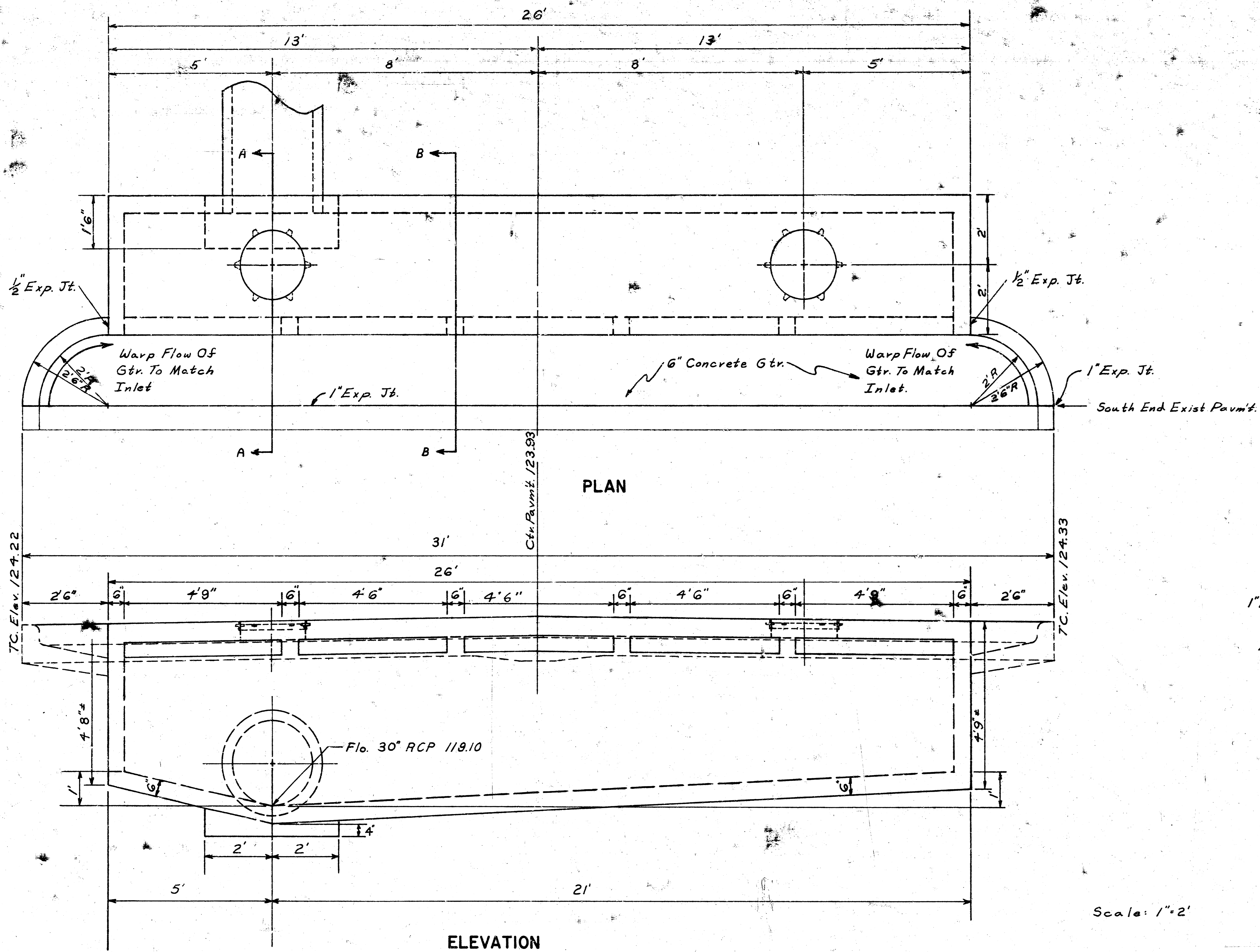


Construct 10' long, 5' wide, 6" thick non-reinforced conc. apron with surface elev. @ D.S. below pipe flowline. Cost for this work included in price bid for pipe.

434 L.F. 30" R.C.P. @ 1.0265% OR
ALTERNATE: 439 L.F. 36" C.M.P. @ 1.0265% (FLOWLINE TO REMAIN AS SHOWN)

STORM WATER SEWER 340 FEET EAST OF WOODLAWN BOULEVARD FROM SOUTH LINE LINCOLN HILLS SECOND ADDITION TO GUT-LAY AT GETTUM CREEK.

CITY OF WICHITA, KANSAS
R.W. LINN CITY ENGINEER
DATE:
SHEET: 1 OF 5
PROJECT NO. DBKA 573074



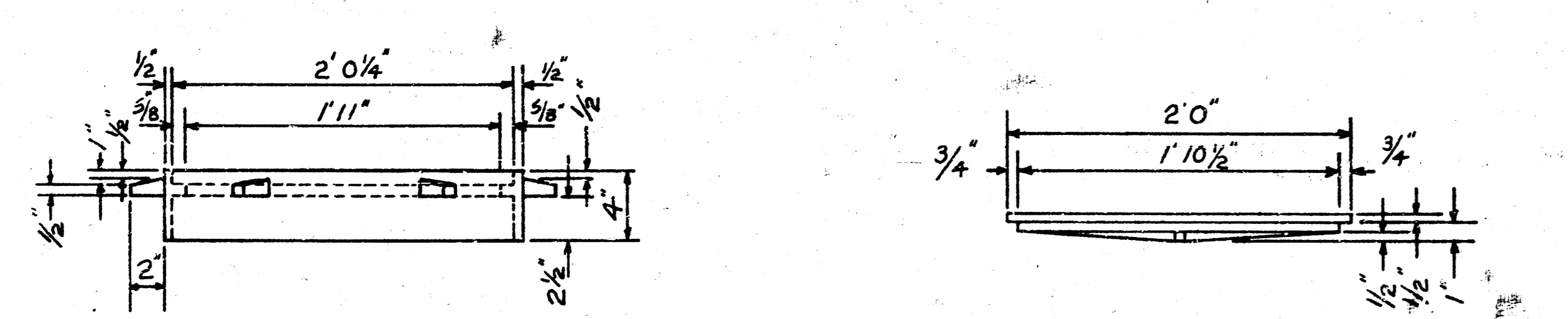
Estimated Inlet Quantities	
Material	Quantity
Concrete	10 CY.
Reinforcing Steel	3/20 Lbs.
Cast Iron Manhole Lids	2 @ 64 Lbs.
Cast Iron Manhole Rings	2 @ 53 Lbs.
Excavation	30 CY.

NOTE: Qty Of Conc. For Inlet Also Includes Qty. Conc. For Gtr., Conc For Inlet + Gtr. To Conform To City Of Wichita Std. Specifications For Conc. Pavement.

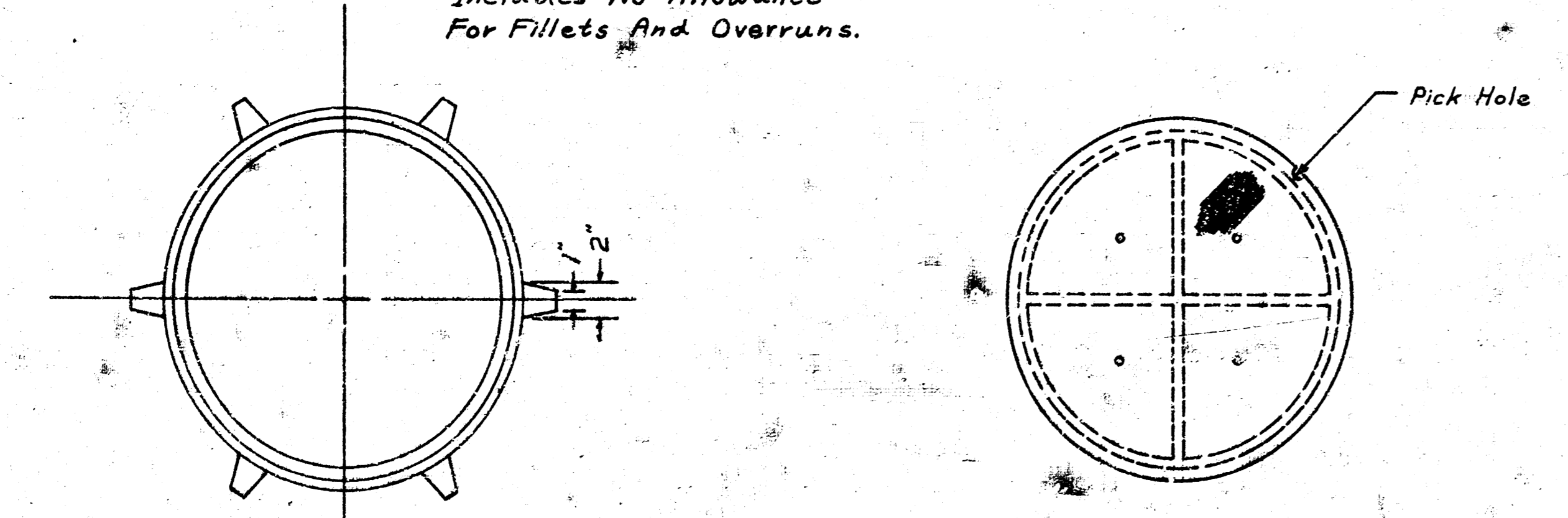
NOTE: See Sheet #3 For Reinforcing Details.

Scale: 1"=2'

NOTE: CONCRETE GUTTER AND ADDITIONAL CURB CONSTRUCTED FROM THE END OF THE EXISTING PAVEMENT TO THE SPECIAL CURB INLET WILL NOT BE PAID FOR DIRECTLY AND THE COST FOR THIS WORK IS TO BE INCLUDED IN THE PRICE BID FOR THE SPECIAL CURB INLET.



NOTE: Weight Of Castings Includes No Allowance For Fillets And Overruns.



Cast Iron Manhole Ring

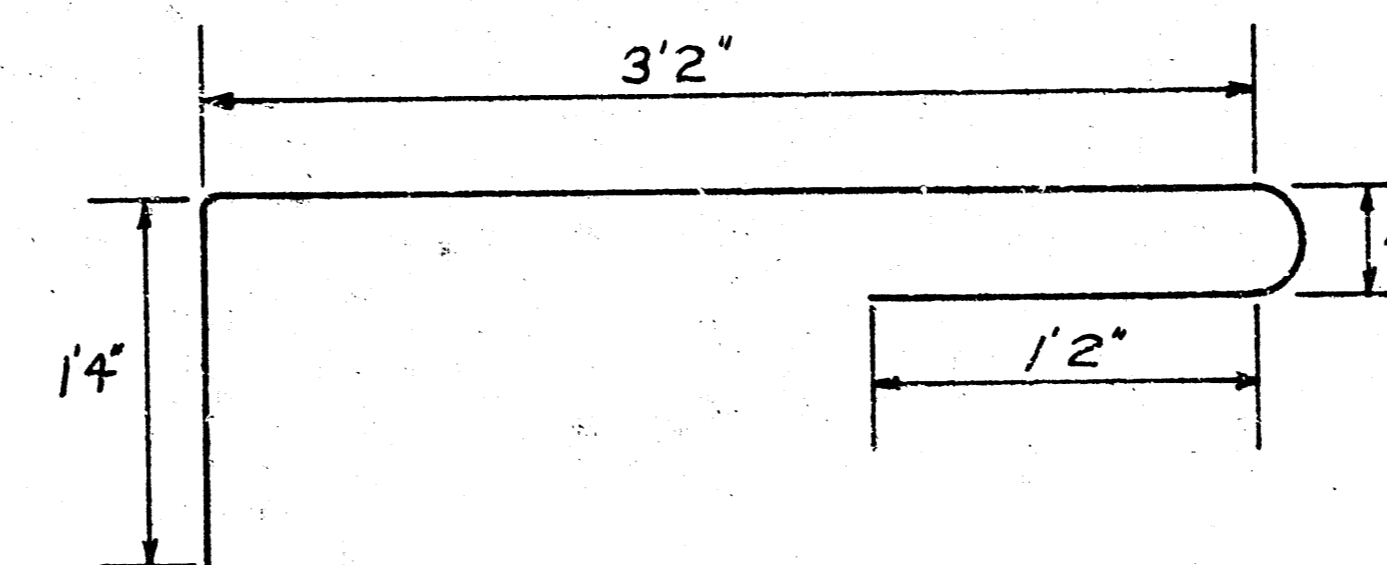
Cast Iron Manhole Cover

SPECIAL CURB DETAIL
 STORM WATER SEWER 340 FEET EAST OF WOODLAWN BOULEVARD FROM SOUTH LINE LINCOLN HILLS SECOND ADDITION TO SUBLET AT GYPSUM CREEK.

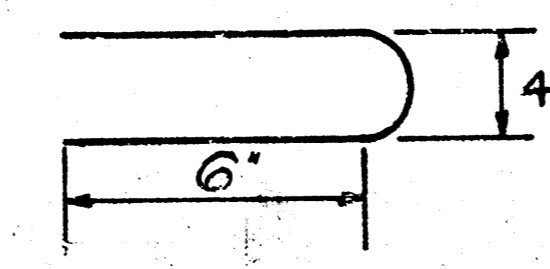
Bill Of Materials For Special Inlet			
Bar Symbols	Bar Sizes	Bar Totals	Bar Lengths
A ₁	#4	42	6'
A ₂	#4	4	1' 4"
B ₁	#4	59	3' 9"
B ₂	#4	3	3' 10"
B ₃	#4	4	9"
B ₄	#4	4	1' 1"
C ₁	#4	3	6' 11"
C ₂	#4	6	25' 11"
C ₃	#4	2	25' 11"
C ₄	#4	4	4'
C ₅	#4	2	14' 3"
C ₆	#4	2	13' 7"
C ₇	#4	4	2' 8"
C ₈	#4	11	25' 9"
C ₉	#4	1	19' 9"
C ₁₀	#4	3	19' 5"
C ₁₁	#4	1	3' 9"
C ₁₂	#4	3	3' 5"
C ₁₃	#4	1	29' 8"
C ₁₄	#4	1	28' 10"
D ₁	#4	8	4' 9"
D ₂	#4	1	8' 6"
D ₃	#4	1	7'
D ₄	#4	1	7' 6"
D ₅	#4	1	6'
V ₁	#4	2	3' 1"
V ₂	#4	2	2' 7"
V ₃	#4	2	2' 5"
V ₄	#4	6	3' 10"
V ₅	#4	6	3' 9"
V ₆	#4	41	5' 10" ⇒ 6' 6" *
V ₇	#4	9	5' 9" ⇒ 6' 7" By 1 1/2" *
V ₈	#4	38	4' 7" ⇒ 5' 6" *
V ₉	#4	6	4' 6" ⇒ 5' 2" By 1 1/2" *
V ₁₀	#4	4	5' 6" ⇒ 4' 10" By 2 3/4" *
X	#4	4	8' 6"

Field Bend

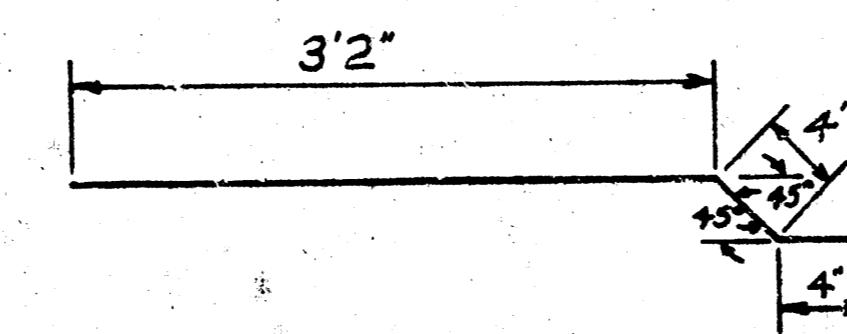
* Cut Bars So That There Will Be A Max. Of 3" Or A Min. Of 1 1/2" From The Outside Wall To The End Of The Steel Bars.



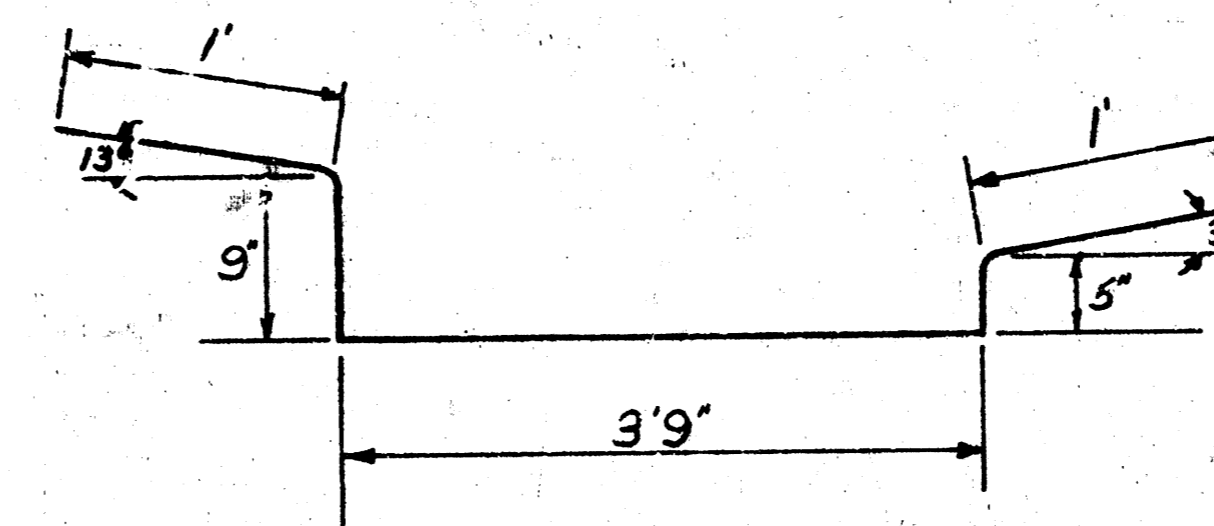
A₁ Bar



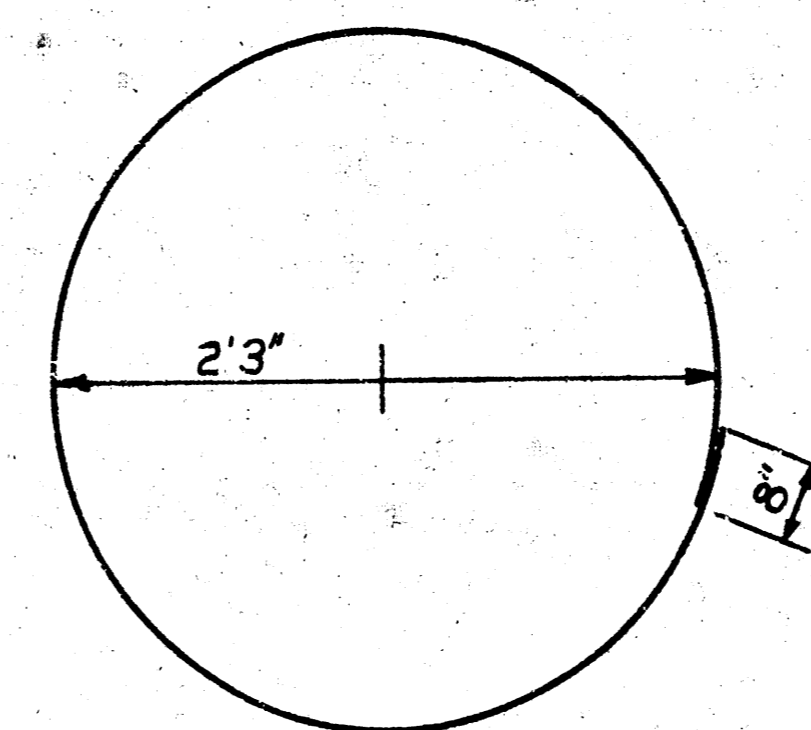
A₂ Bar



B₂ Bar



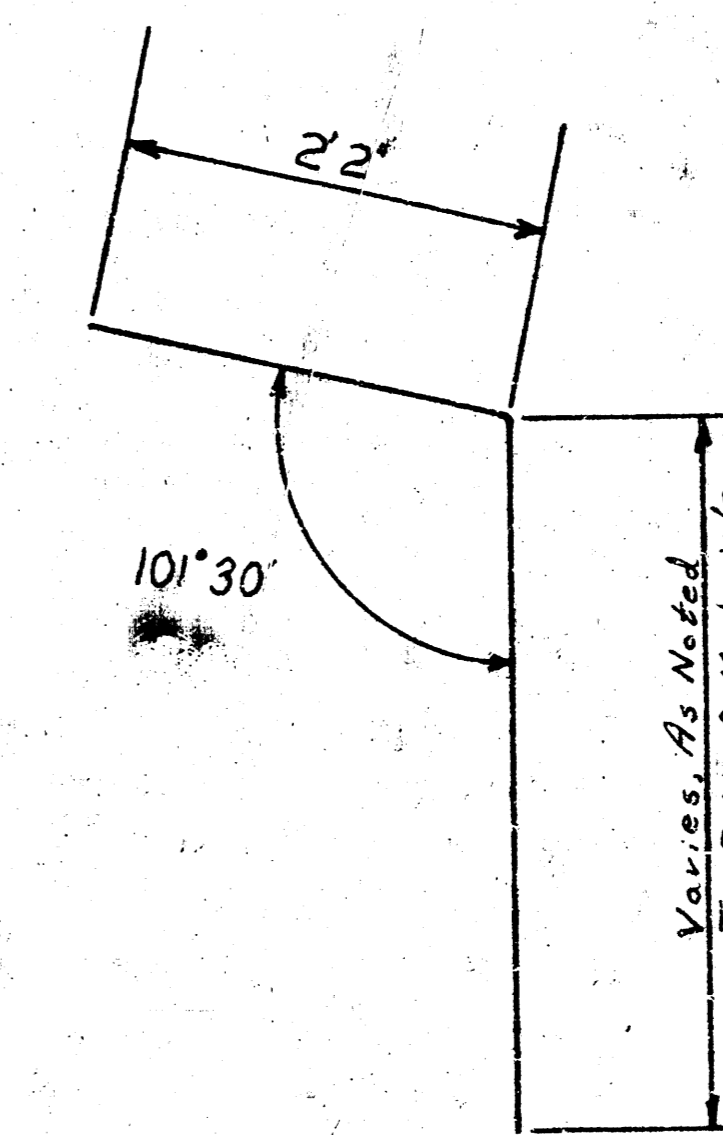
C₁ Bar



X Bar

Bending Diagram

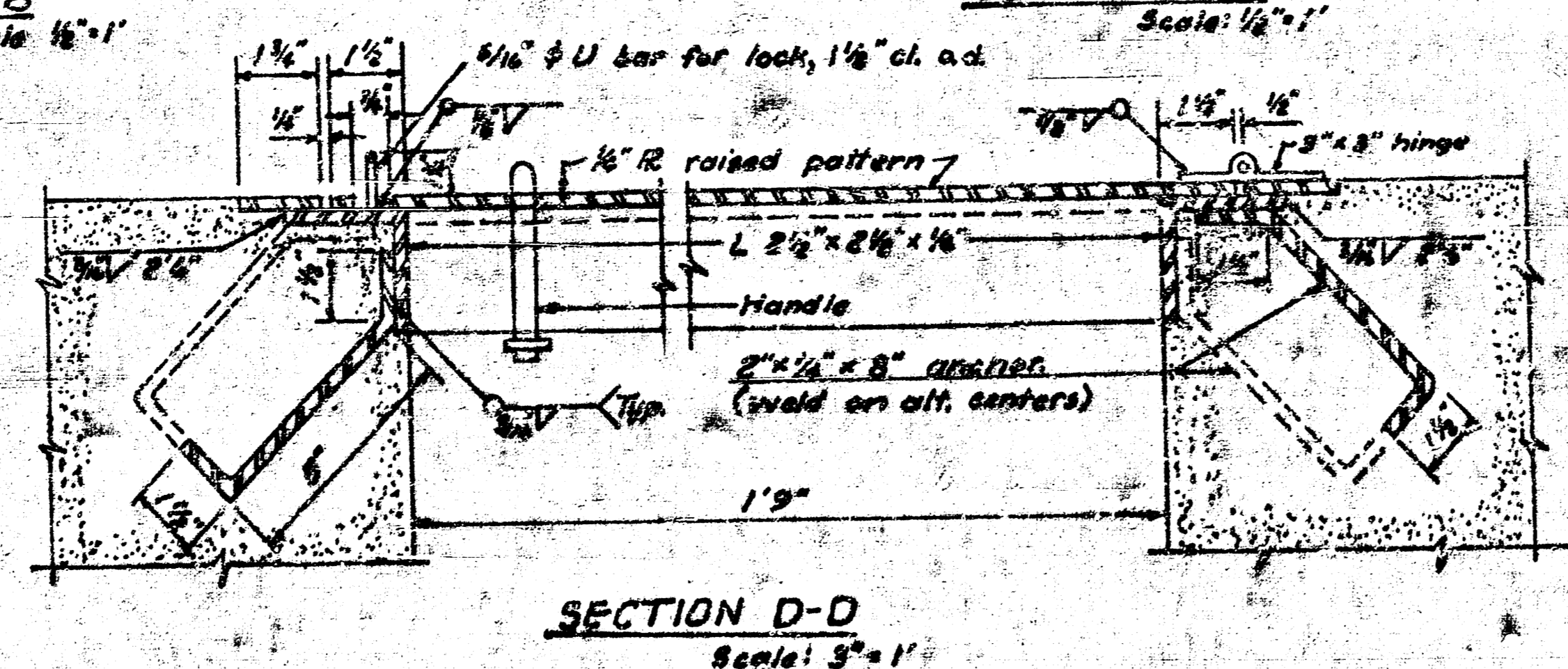
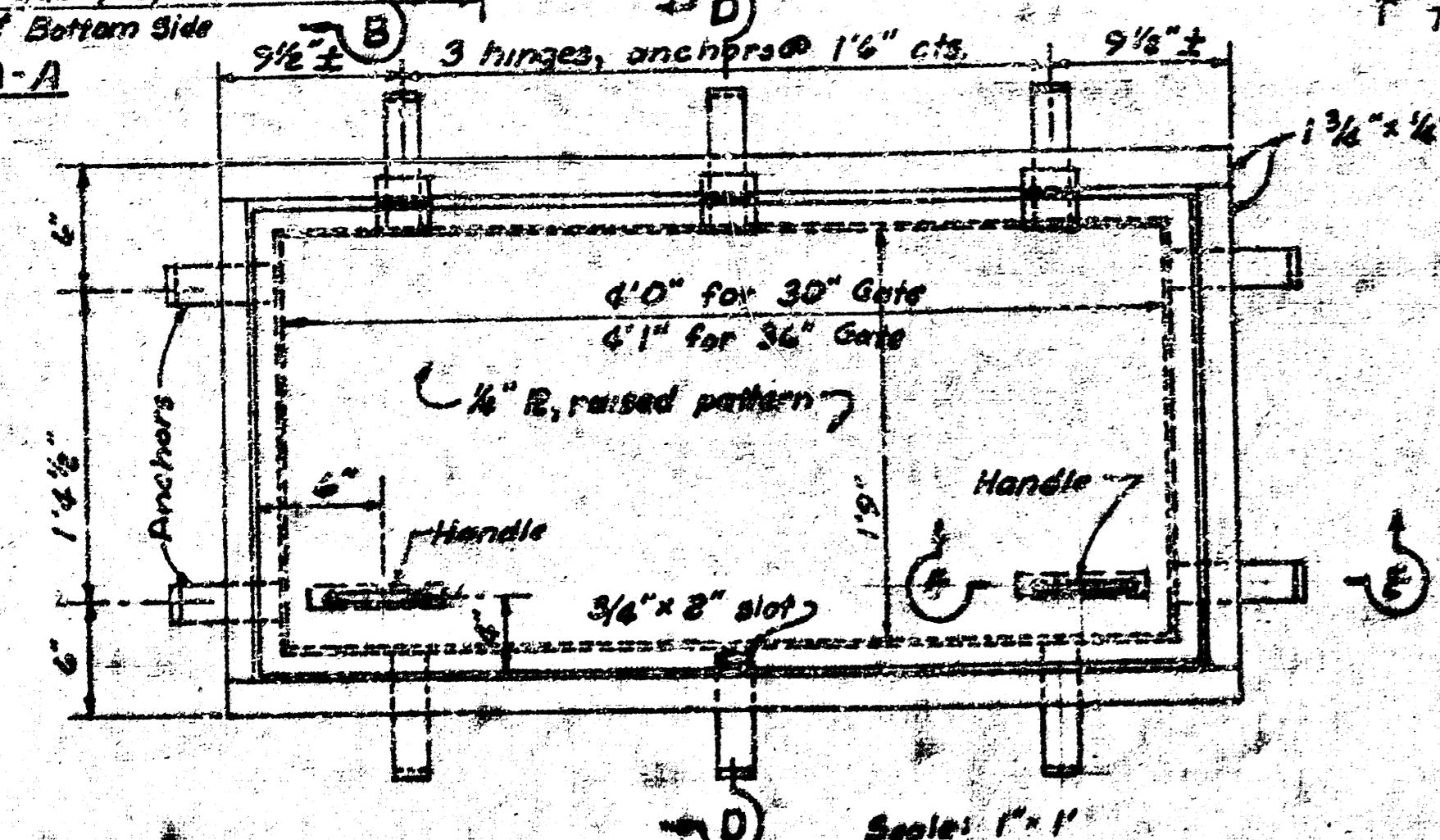
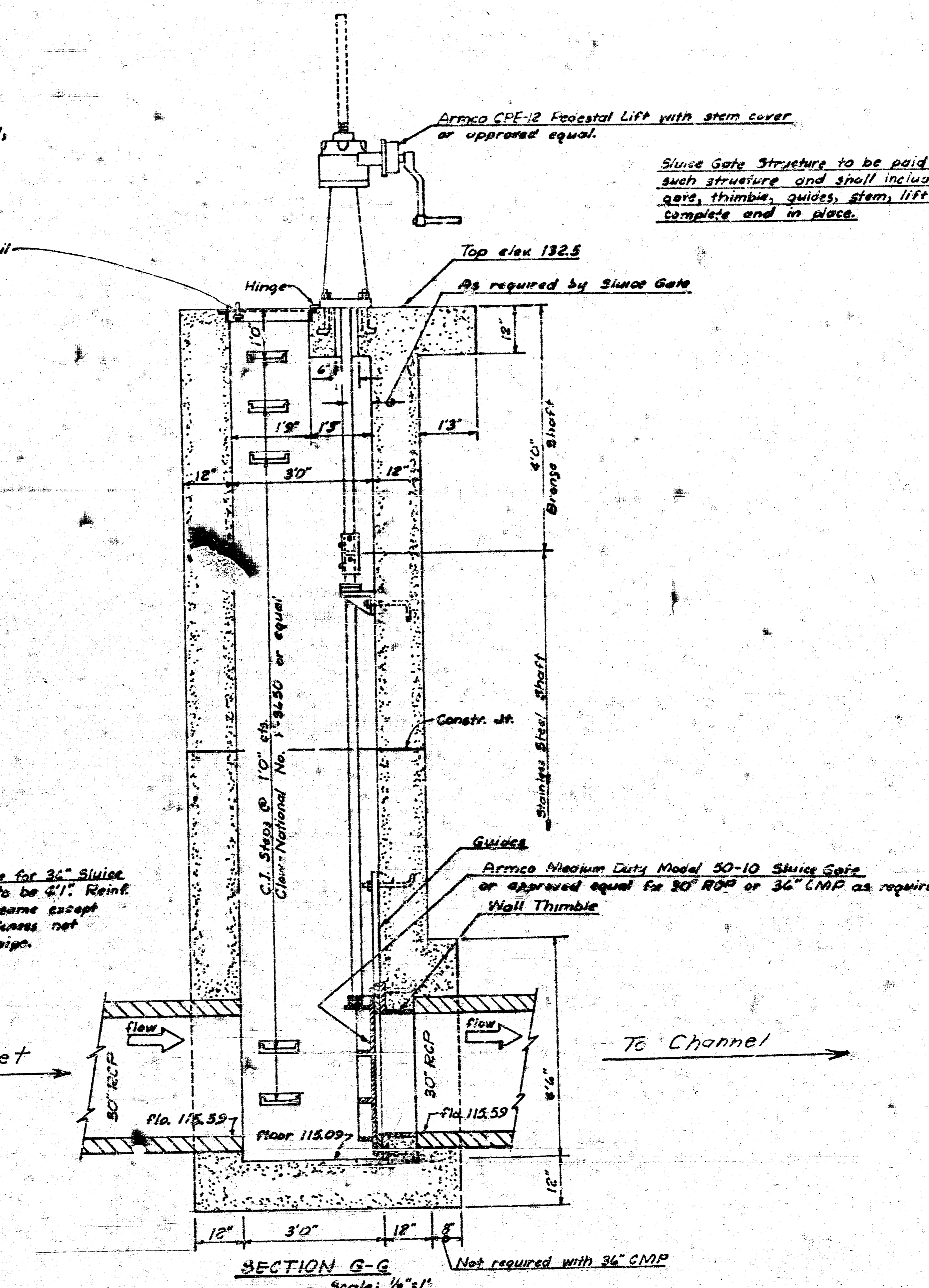
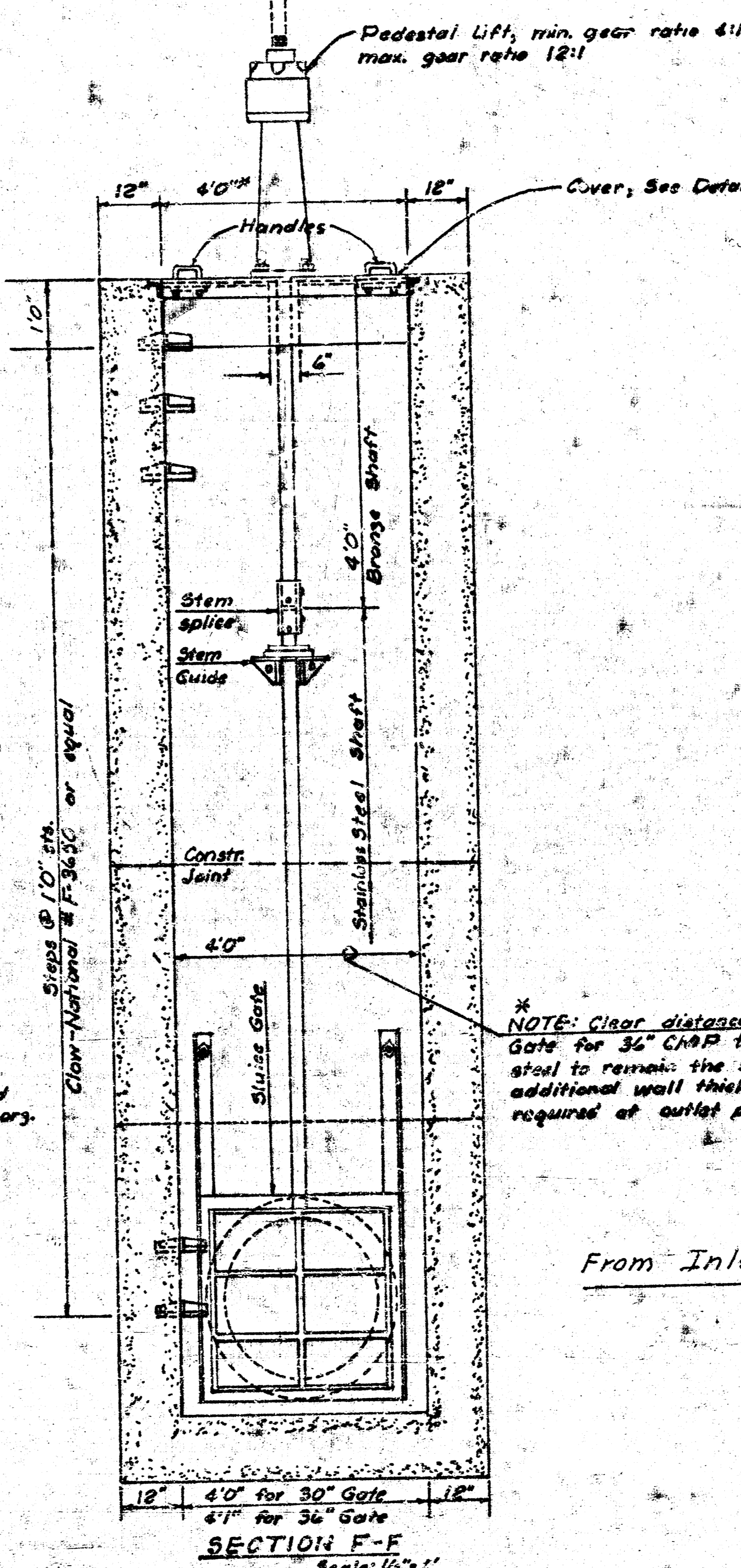
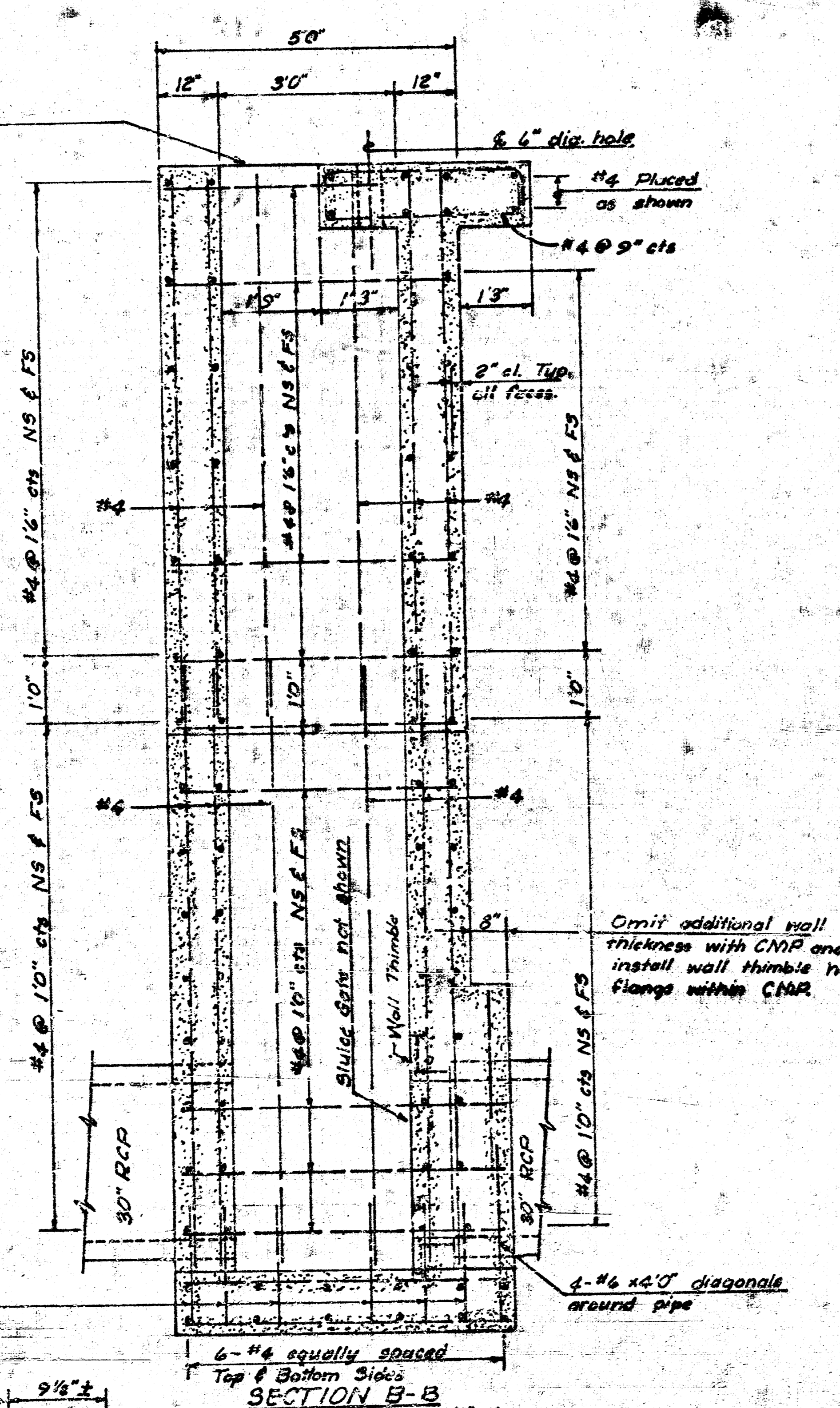
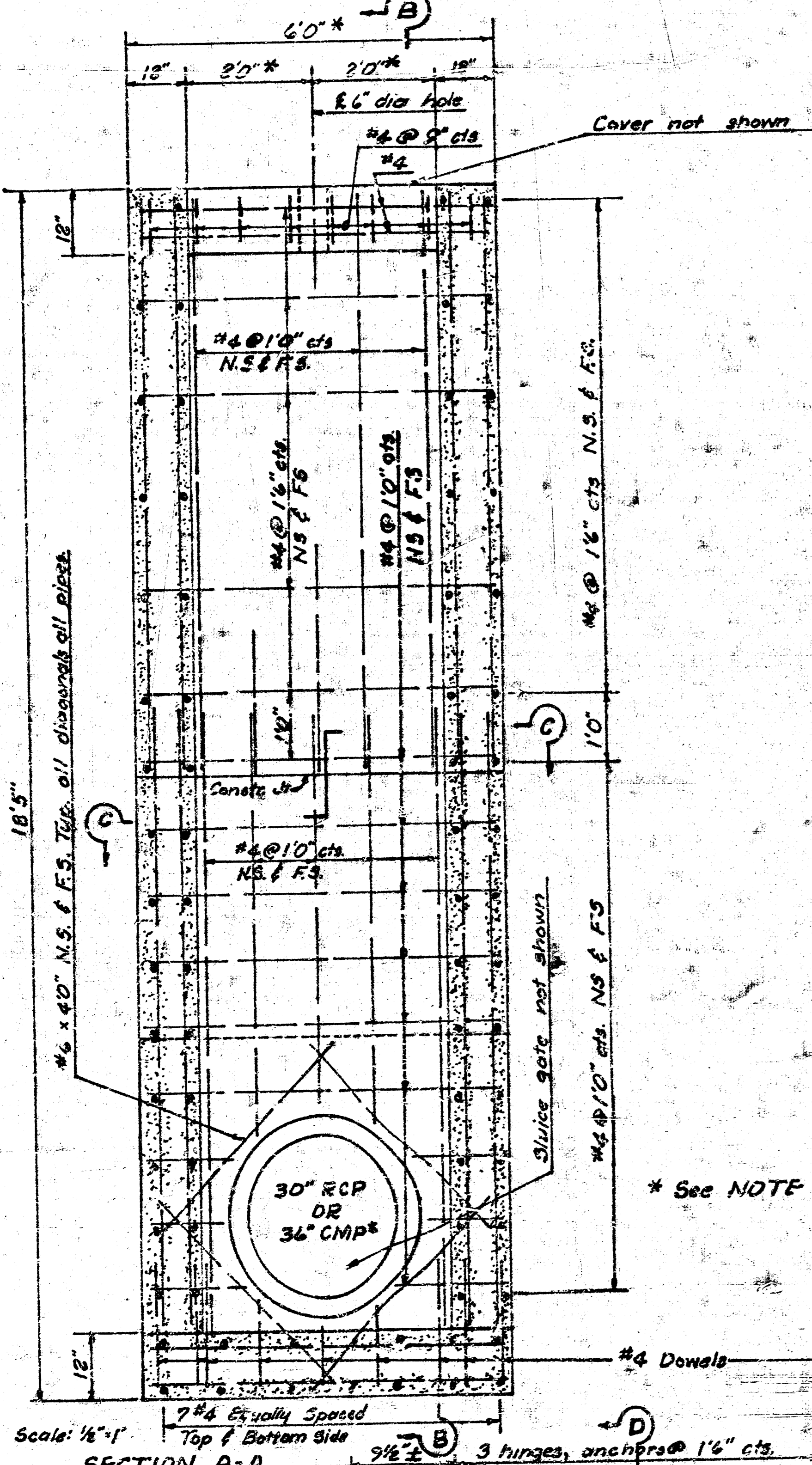
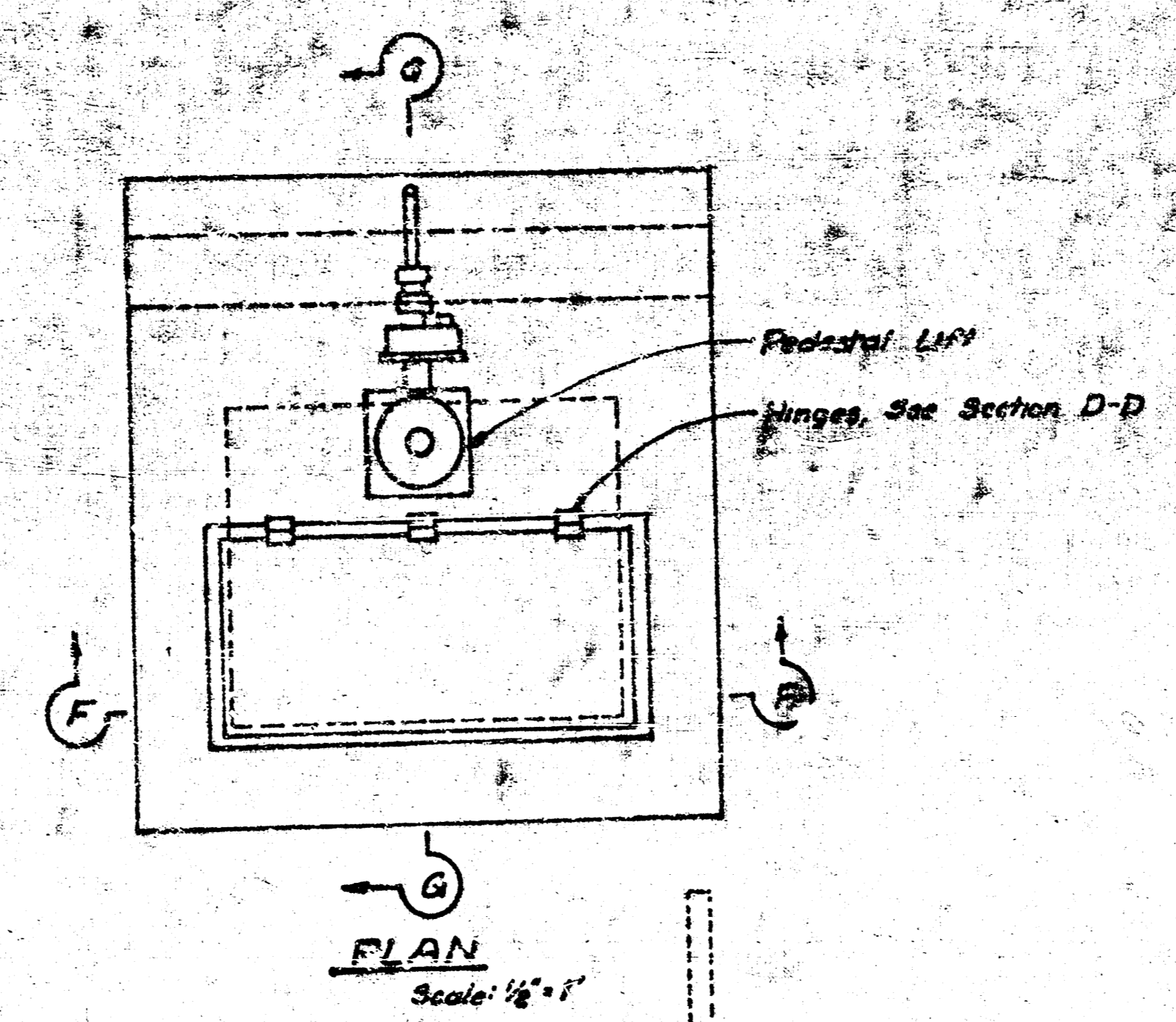
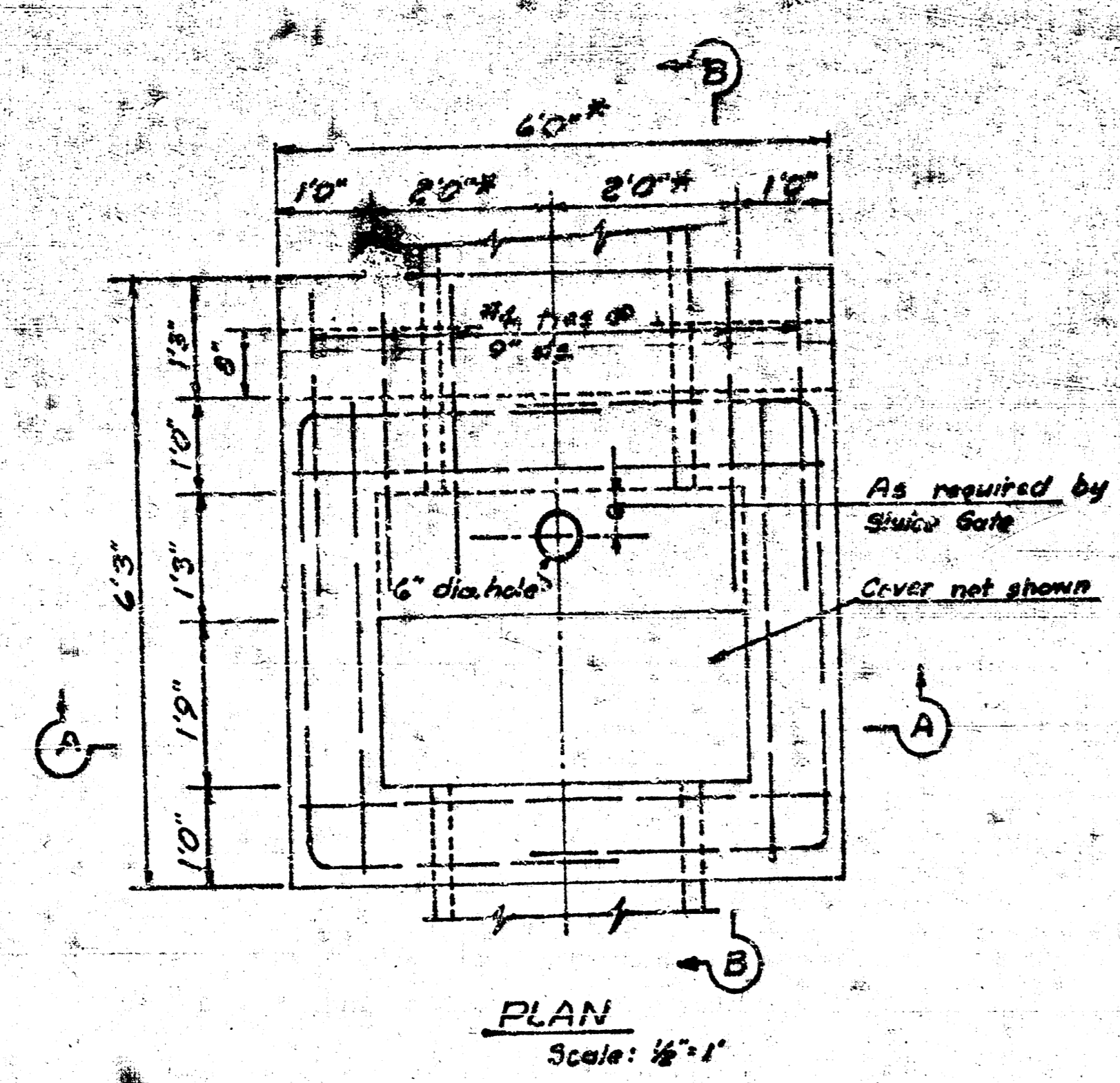
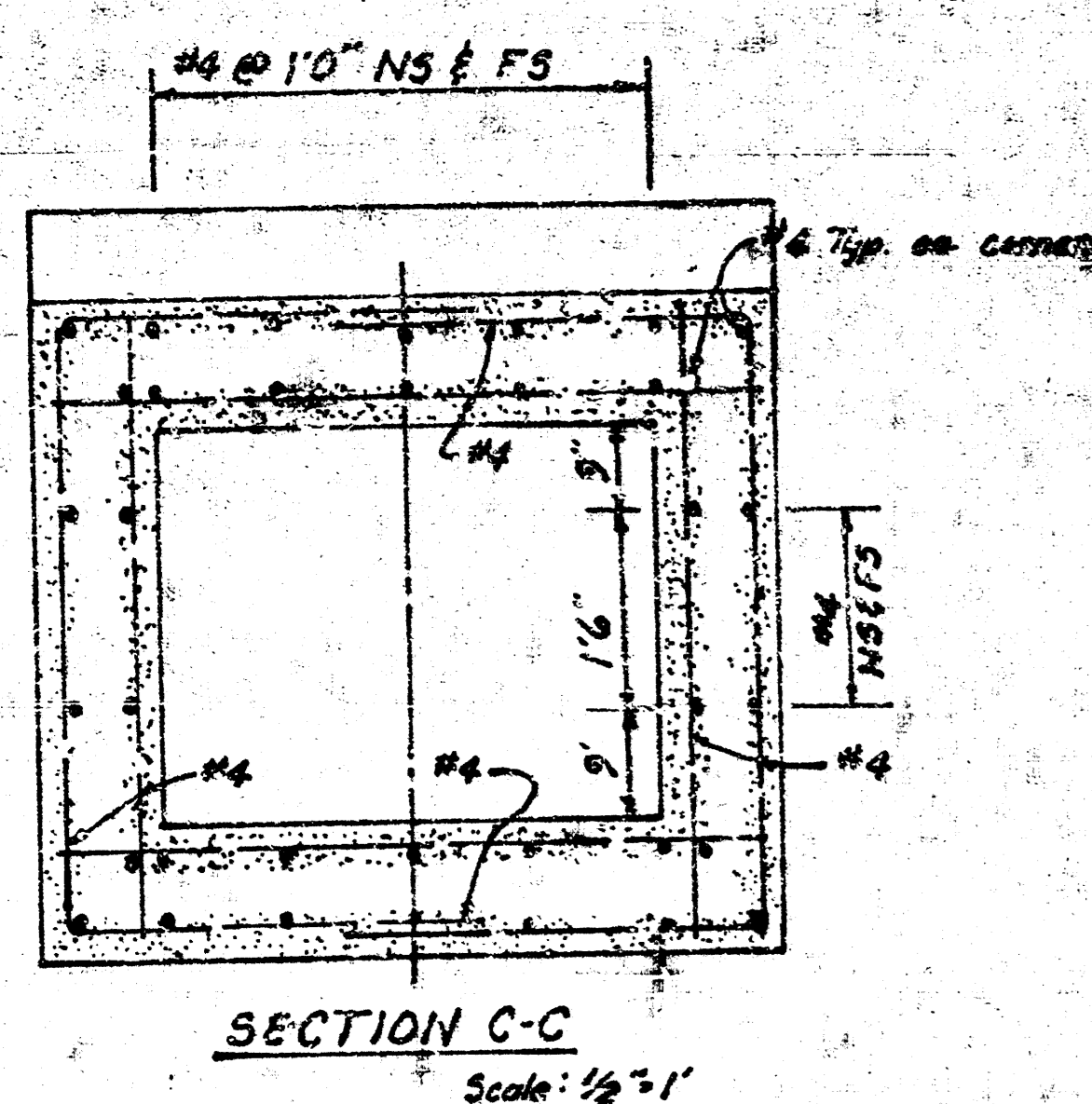
(All Dimensions Are Out To Out)



V₆+V₇ Bars

REINFORCING STEEL FOR
SPECIAL INLET

STORM WATER SEWER 340 FEET EAST OF WOODLAWN BOULEVARD
FROM SOUTH LINK LINCOLN HILLS SECOND ADDITION TO OUTLET
LET AT GYPSUM CREEK.



Sluice Gate Structure to be paid for as lump sum bid for such structure and shall include concrete, rebar, covers, gate, thimble, guides, stem, lift and all appurtenances complete and in place.

NOTE: Clear distance for 36" Sluice Gate for 36" CMP to be 47". Reinft. steel to remain the same except additional wall thickness not required at outlet pipe.

SLUICE GATE STRUCTURE
STORM WATER SEWER 340 FEET EAST OF WOODLAWN BOULEVARD FROM SOUTH LANE LINCOLN HILLS SECOND ADDITION TO OUTLET AT GYPSUM CREEK.
SHEET 5 OF 5