

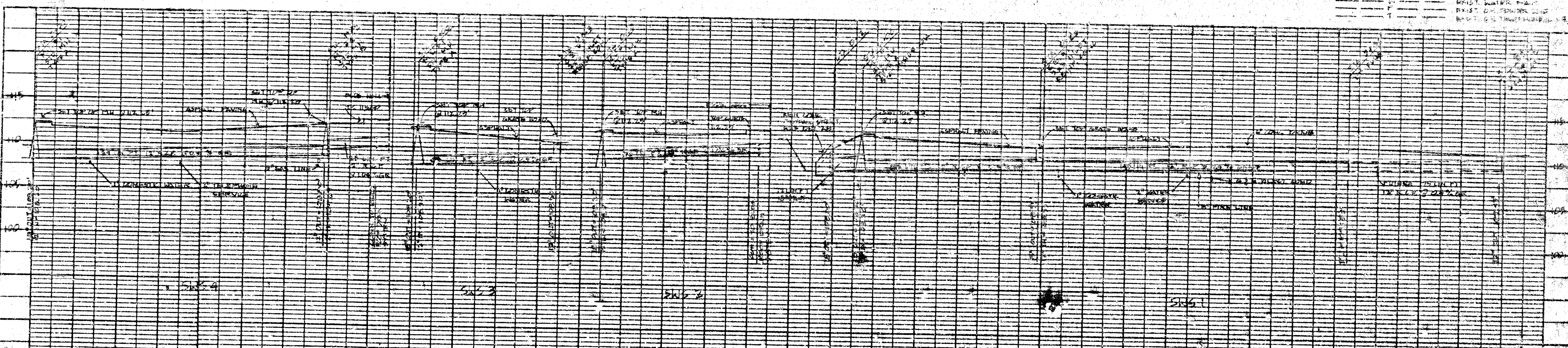
**NOTES:**

- 1. MANHOLE #1 STANDARD MH TYPE A WITH 36" INSIDE DIAMETER CONTRACTOR'S OPTION: REINFORCED CONC. JUNCTION BOX 36" X 36" INSIDE DIMENSION.
- 2. CATCHBASINS #1 AND #2: CONTRACTOR'S OPTION - STANDARD 24" DROP INLET.
- 3. BENCH MARK: 100' SPK IN FOLD 345' WEST AND 30' NORTH OF THE CENTER LINE OF THE INTERSECTION OF WEST ST. AND MAY ST. ELEV. 109.07 CITY OF WICHITA DATUM.

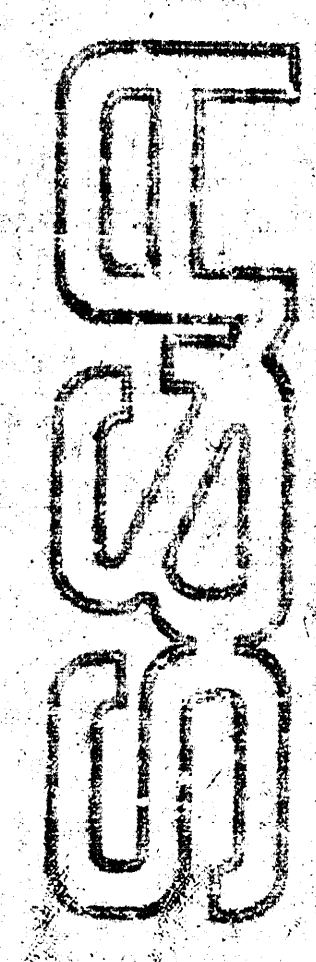
PLAN SCALE: 1" = 20'  
 PROFILE SCALE: 1" = 2' VERT.



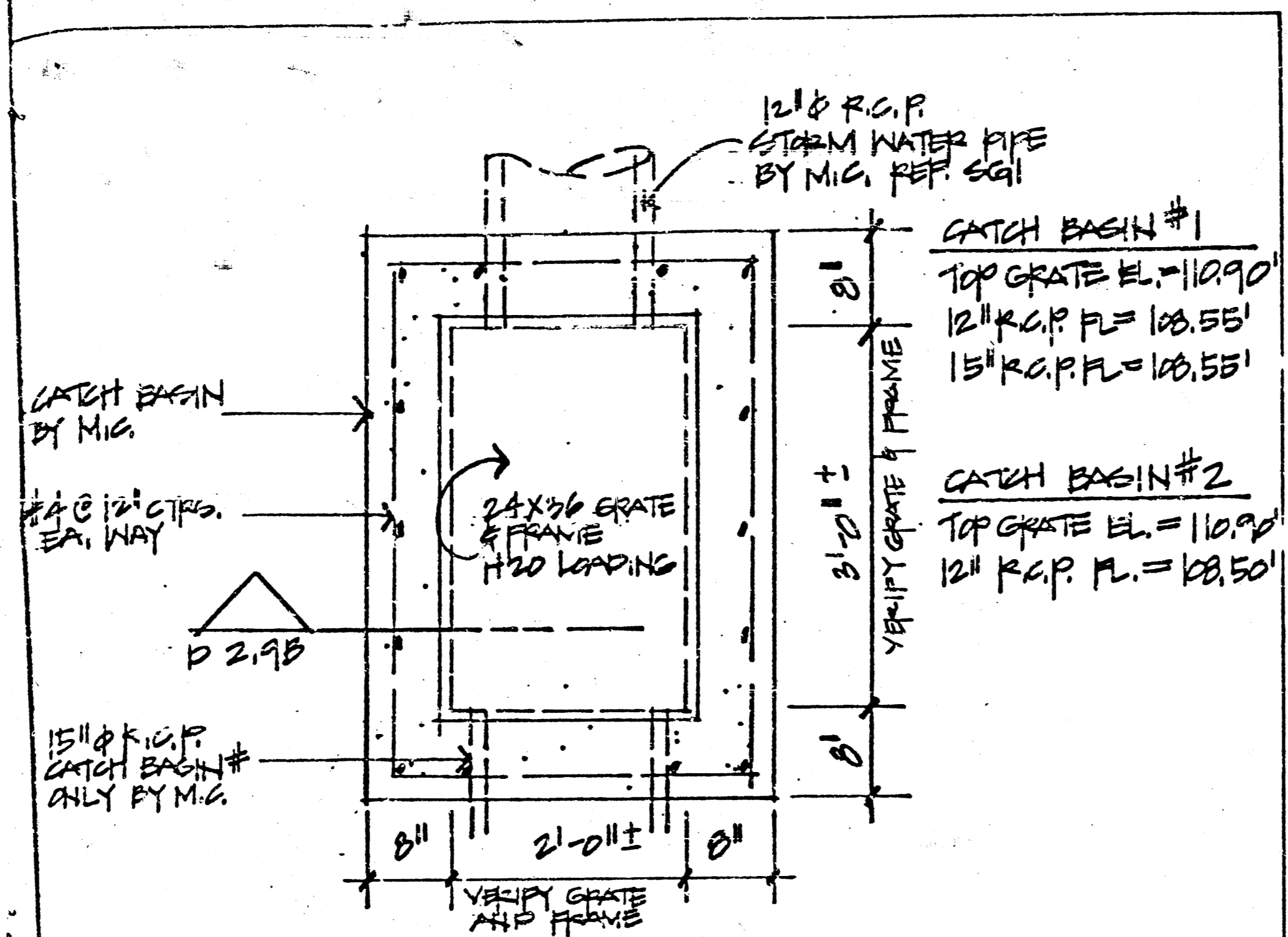
1	STORM WATER SEWER
2	EXIST. SANITARY SEWER
3	EXIST. WATER MAIN
4	EXIST. GAS MAIN
5	EXIST. FIRE MAIN



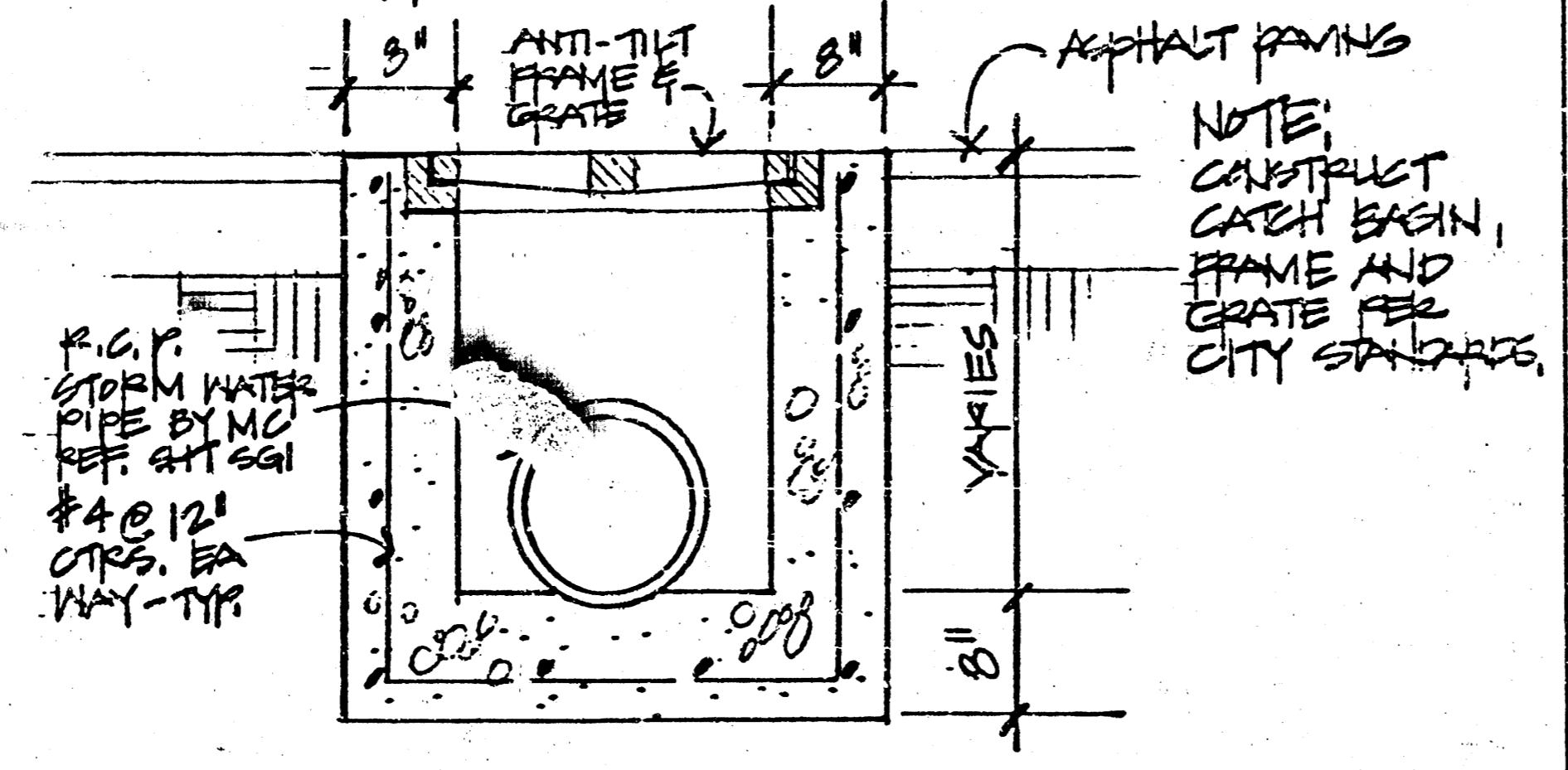
ARCHITECTURE PLANNING INTERIORS  
 ENGINEERING LANDSCAPE ARCHITECTURE



SALES OFFICE & WAREHOUSE FOR  
 W.W. GRAINGER, INC.



(A) PLAN - CATCH BASIN  
3/4" = 1'-0"



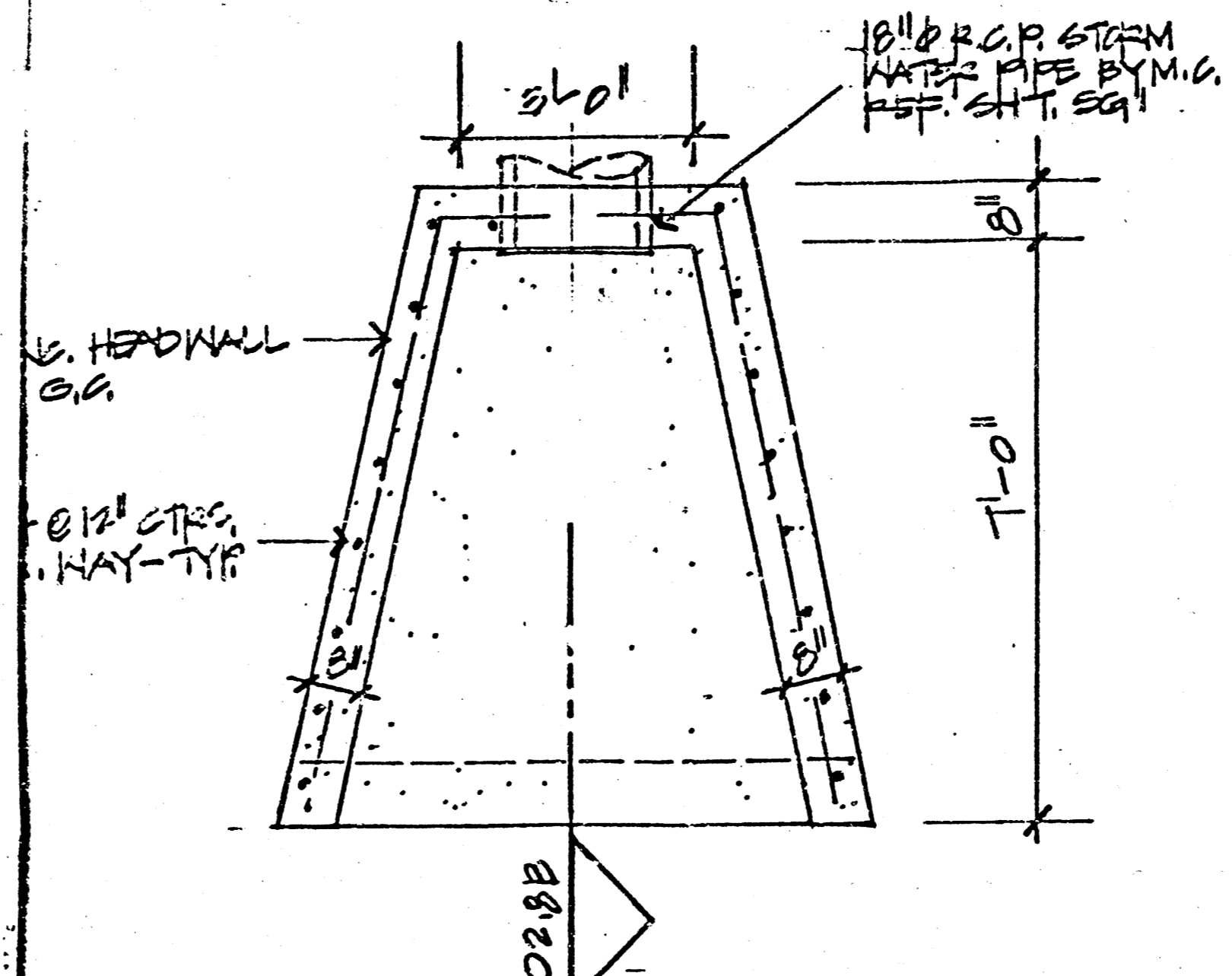
(B) SECTION - CATCH BASIN  
3/4" = 1'-0"

EPH & ASSOCIATES P.A.  
104TH HILLSIDE  
TA KANSAS 67211  
2-171

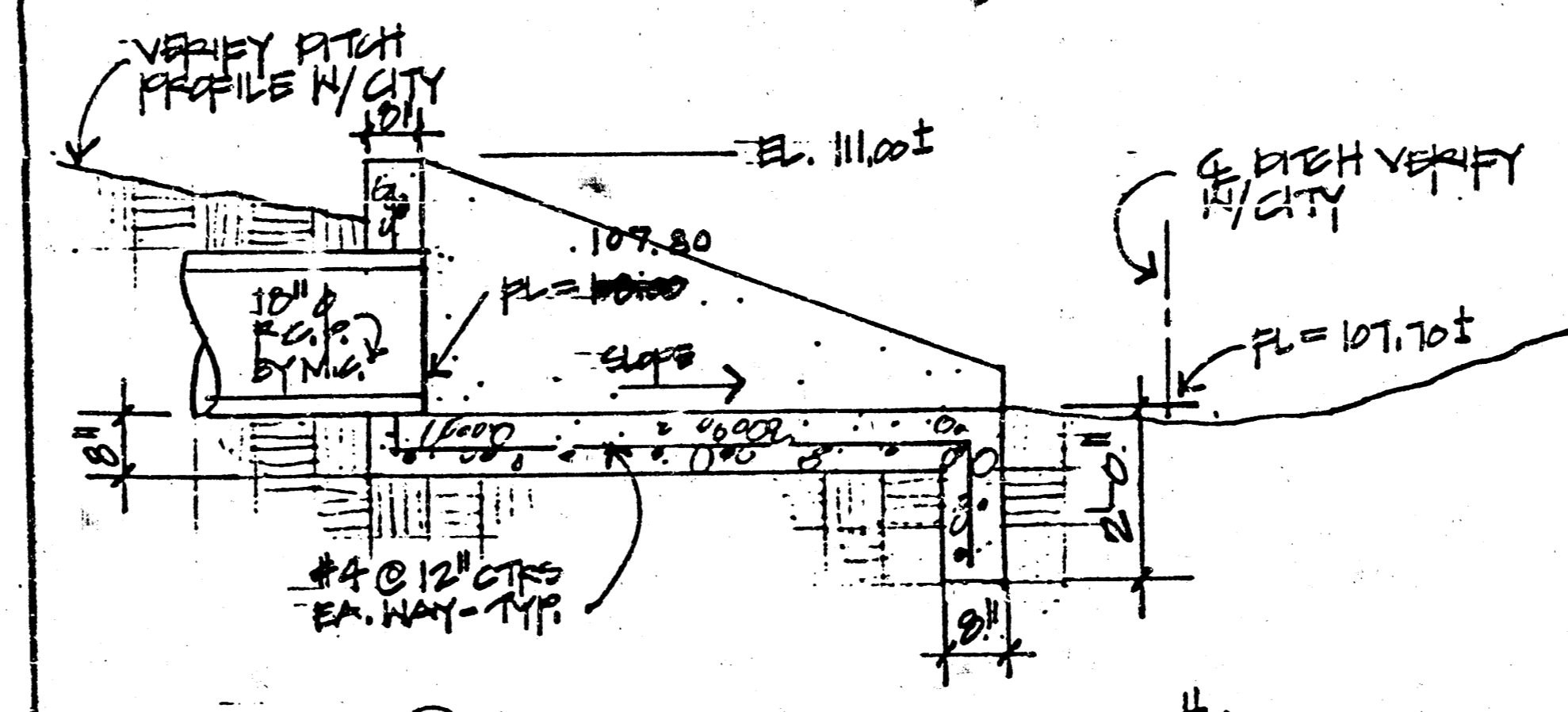
W.W. GRANGER

JOB NO. 01681.00  
DATE 10 APRIL 76

PAGE 2.9



(A) PLAN - HEADWALL #1  
3/8" = 1'-0"



(B) SECTION - HEADWALL #1  
3/8" = 1'-0"

EPH & ASSOCIATES P.A.  
104TH HILLSIDE  
TA KANSAS 67211  
2-171

W.W. GRANGER

JOB NO. 01681.00  
DATE 10 APRIL 76

PAGE 2.10