

FHWA REGION NO.	STATE	PROJECT NO.	FISCAL YEAR	SHEET NO.	TOTAL SHEETS
7	KANSAS		19	4	5

LEGEND

- Sanitary Sewer & Manhole
- Storm Drain & Manhole
- Storm Drain Inlet
- Water Line
- Fire Hydrant

Scale: 1" = 40'

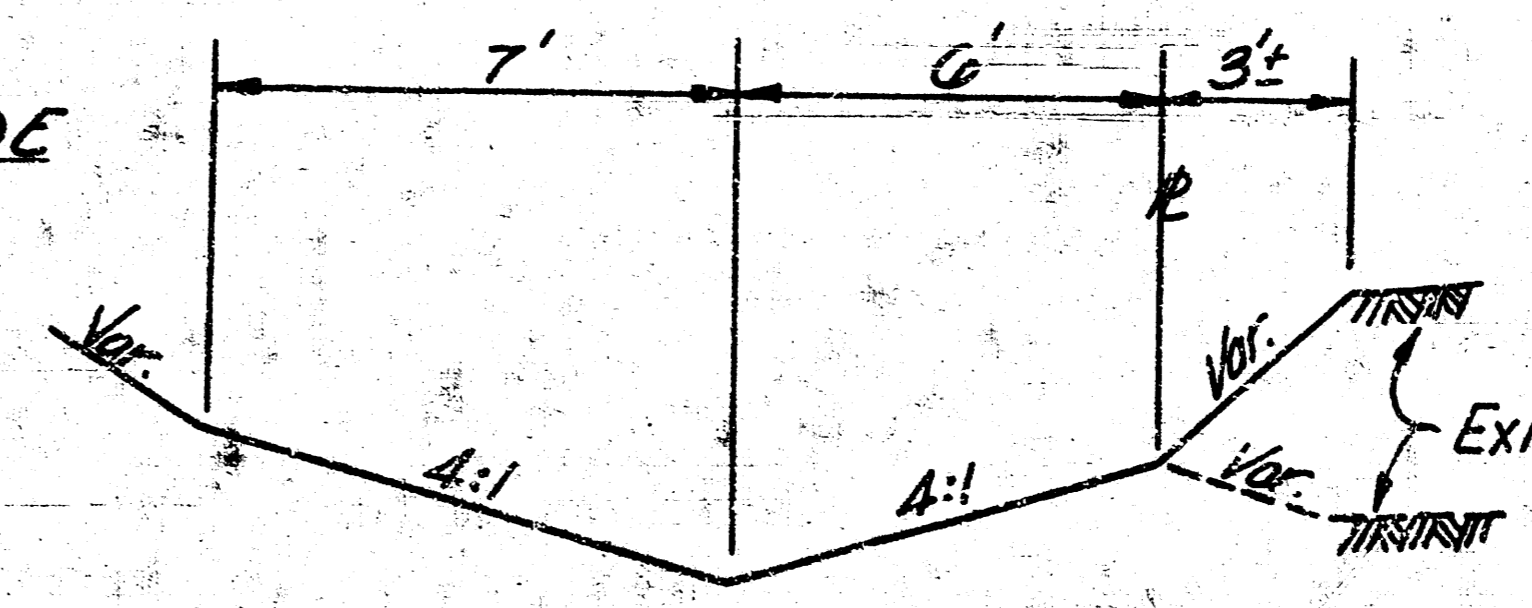
NOTES

APPROVED  
By CITY EN.  
Sanitary Sewer  
Storm Sewer  
Driveway App.

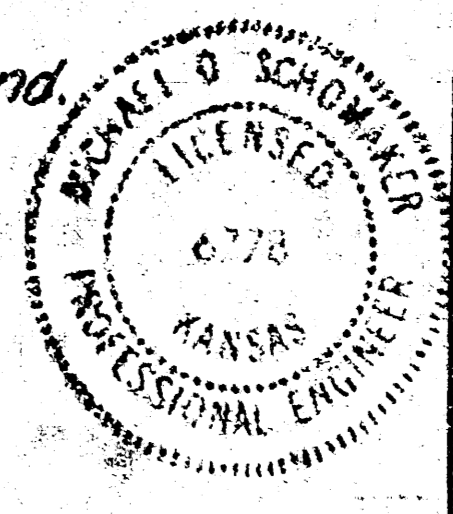
CITY OF WICHITA STORM SEWER  
Proj. No. DBKW70720  
CITY OF WICHITA WATER DEPT.  
Proj. No. GETW701401  
CITY OF WICHITA SANITARY SEWER  
Proj. No. DBKW707015

NOTES:

1. All elevations City of Wichita Datum.
2. All construction to comply with City of Wichita specifications and standards.
3. Sewer lines to be inspected by the Dept. of Public Works Inspection.
4. Storm Drain lines to be inspected by the Dept. of Public Works Inspection.
5. Sand backfill and flush all sanitary sewer and storm drain excavations.
6. All Storm Drain fittings shall be considered subsidiary to CMP.
7. All CMP shall be helically corrugated.
8. Connection to existing inlet shall be considered subsidiary to CMP.
9. All inlets to be City of Wichita Std. Drop Inlets (size as shown on profile).
10. All waterline construction and materials to comply with Wichita Water Dept. Standards and Specifications.
11. All excavation, thrust blocks, and backfill at tapping locations by contractor.
12. Sanitary sewer service lines, and water service lines and precast meter vaults to be located by Plumbing contractor as per Architects Utility Plan.
13. See Sheet No. 5 for Sanitary Sewer, Storm Drain and Waterline Profile.
14. All manholes to be Standard City of Wichita Type A and 4' dia. except as noted.



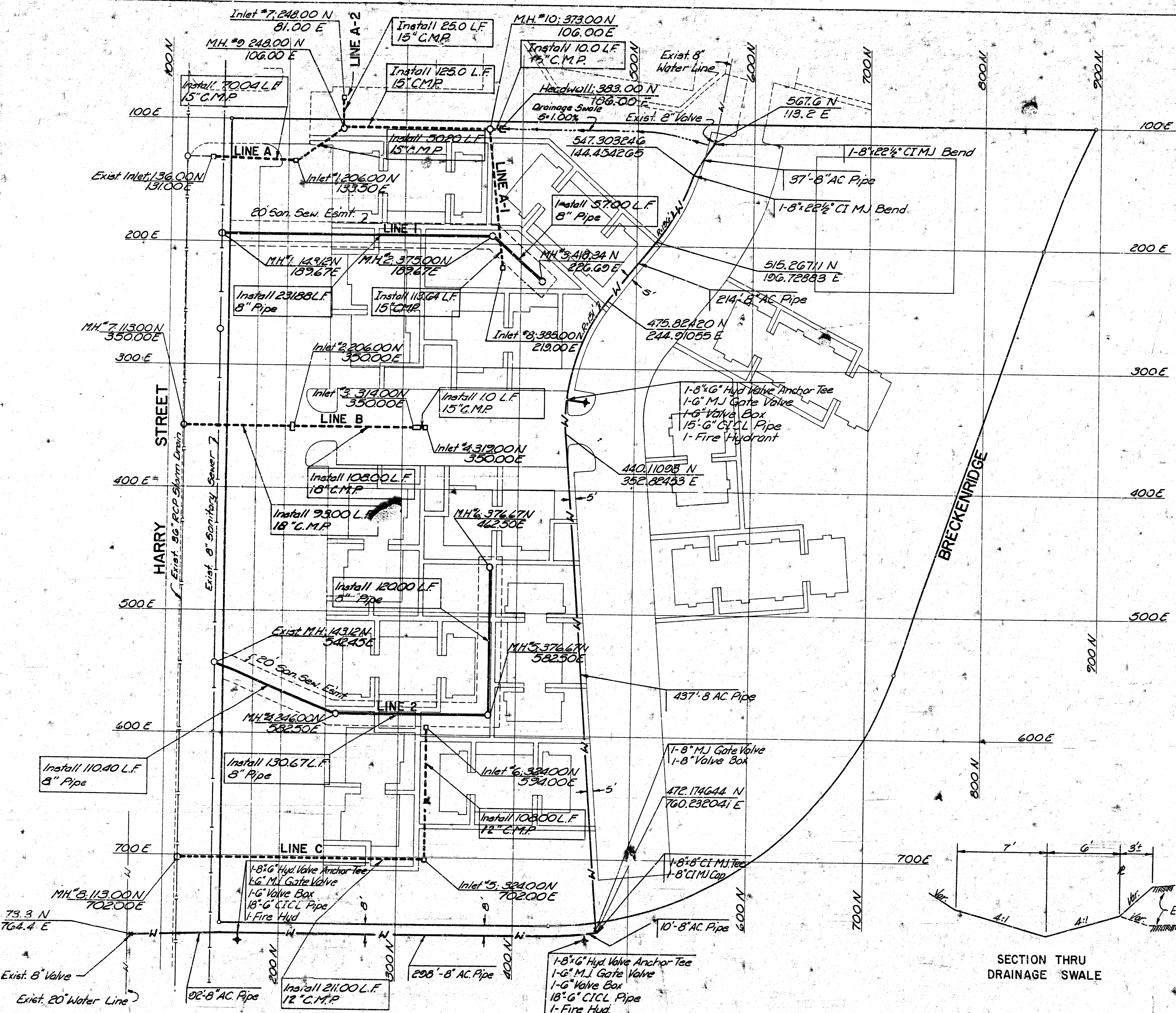
SECTION THRU DRAINAGE SWALE

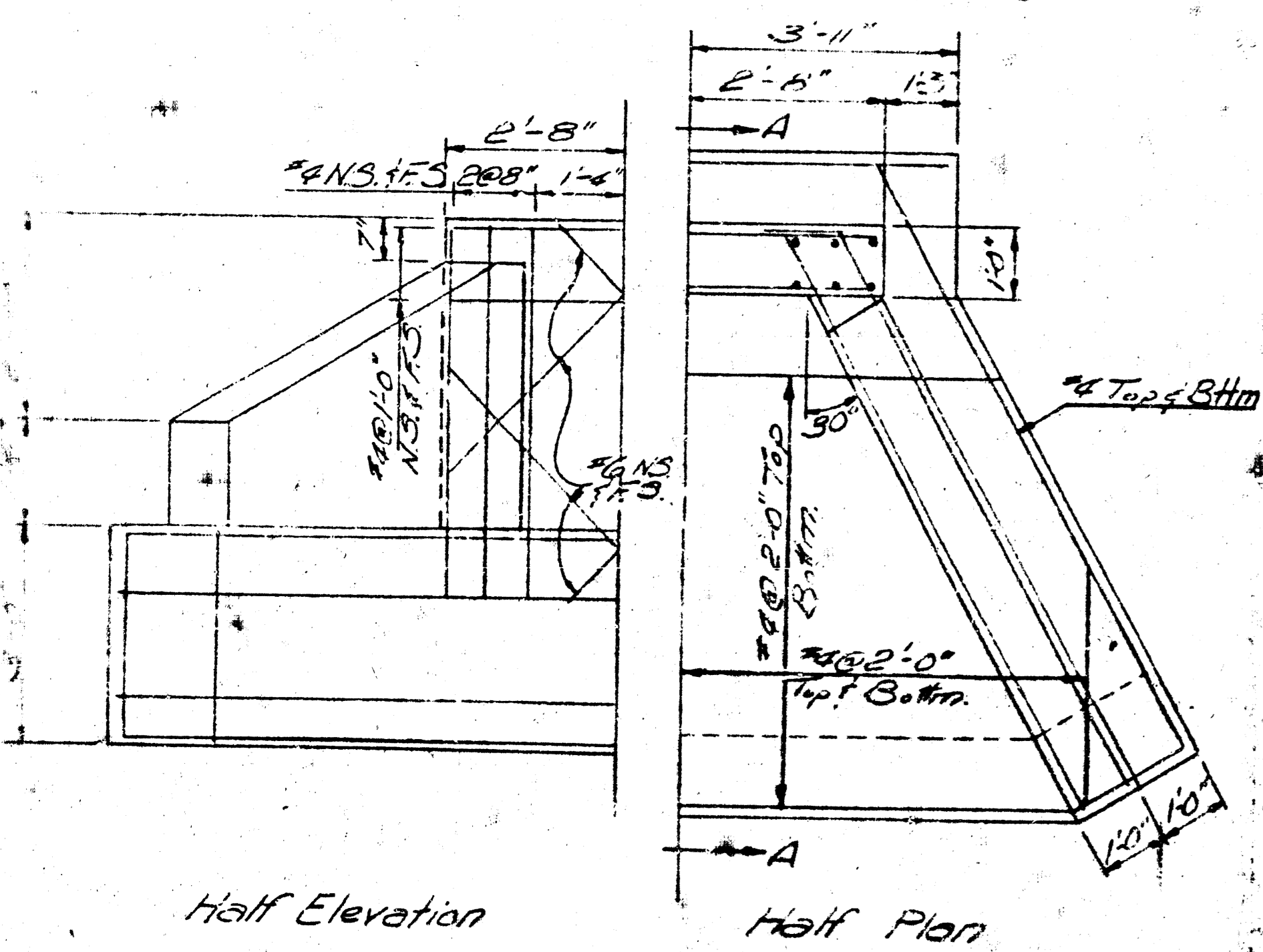


THE HARDESTY CO.  
**UTILITY PLAN**  
QUAIL MEADOWS APTS. PHASE II  
PROFESSIONAL ENGINEERING CONSULTANTS, P.A.  
ENGINEERS  
WICHITA, KANSAS

B.M. - East R in Mueller, Top Fire Hydrant W. Side Drive Ent. El. = 171.83 City Datum

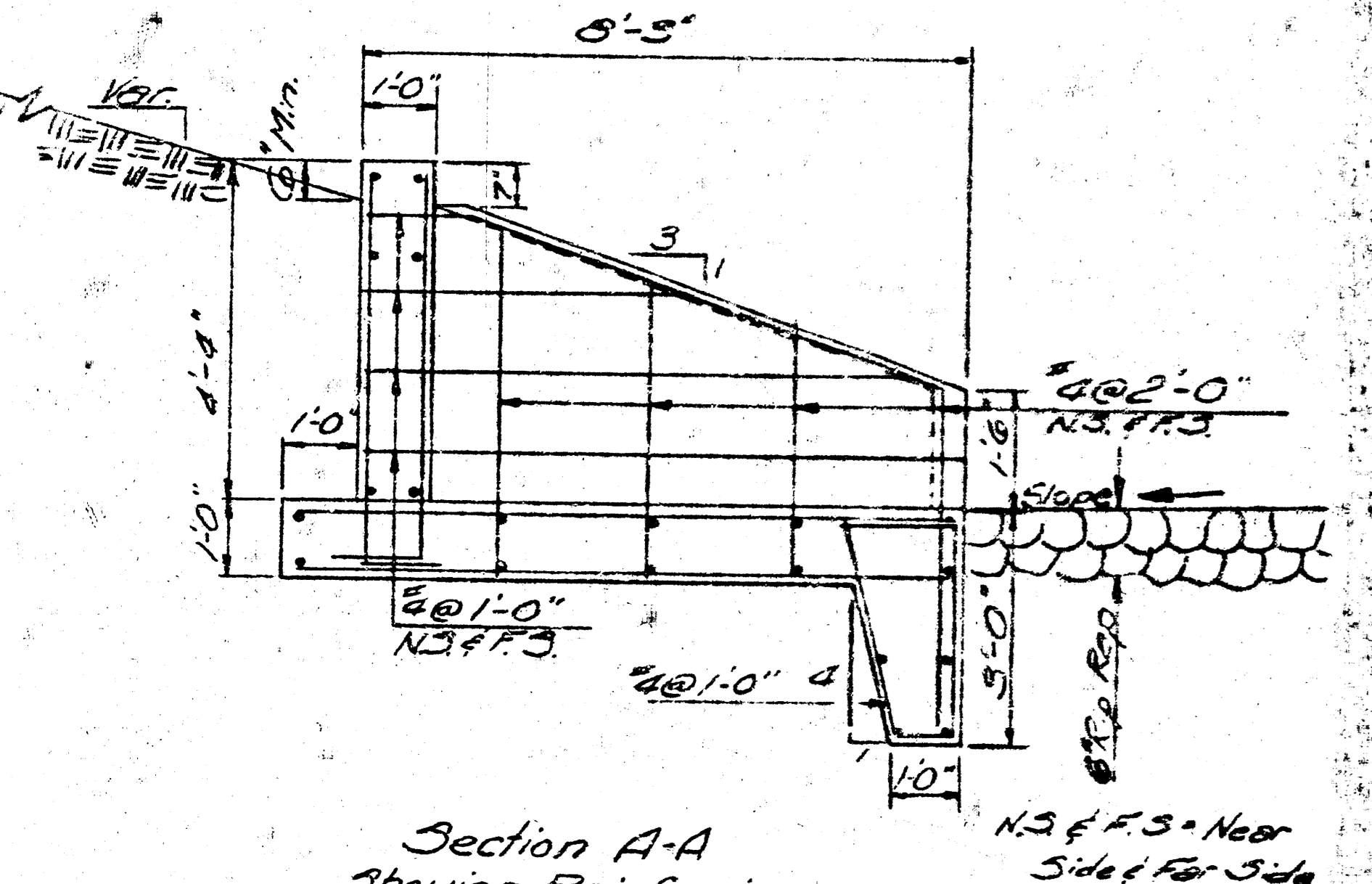
B.M. - 3/4" rebar in conc. of S.E. Cor. Lot 2 Blk. G. El. = 172.81 City Datum





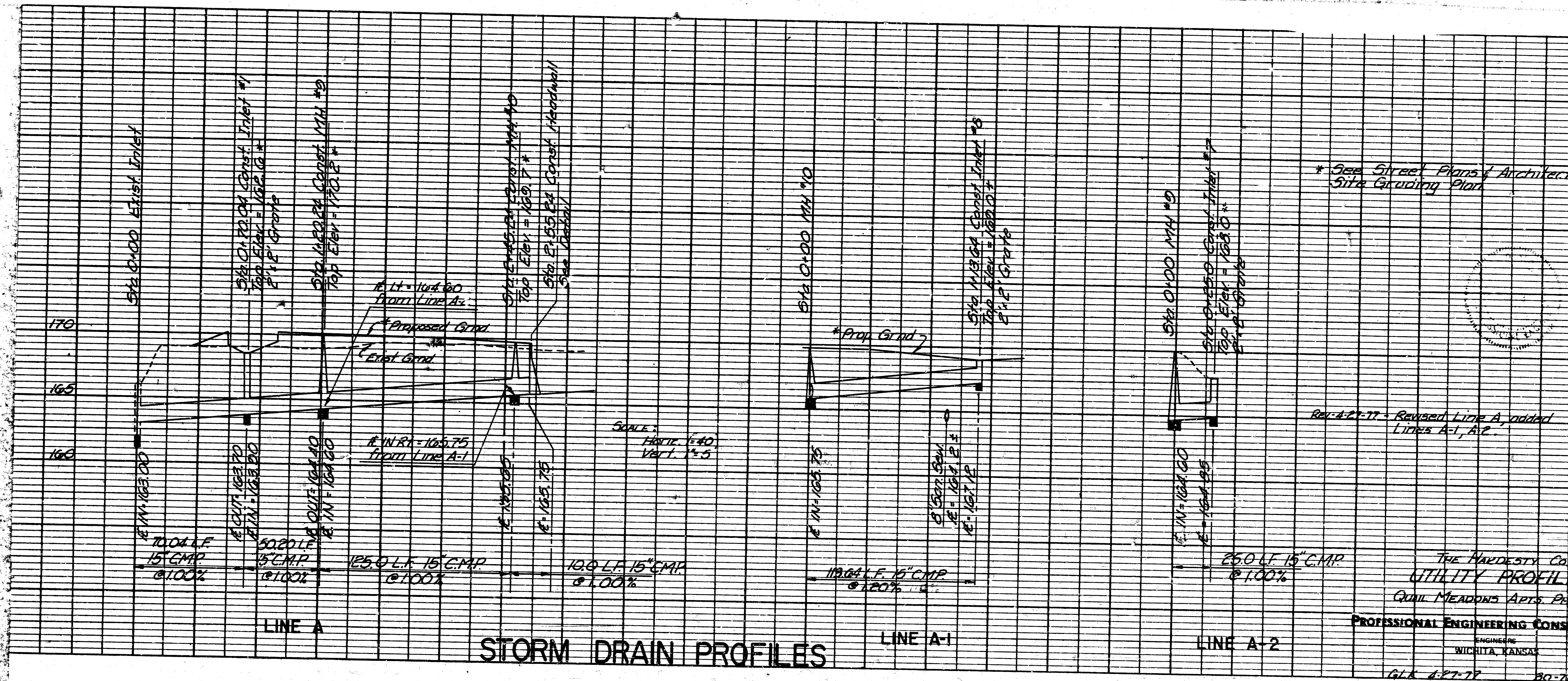
Half Elevation

Half Plan



Section A-A  
Showing Reinforcing

HEADWALL DETAIL  
PROFESSIONAL ENGINEERING CONSULTANTS  
ENGINEERS  
WICHITA, KANSAS



STORM DRAIN PROFILES

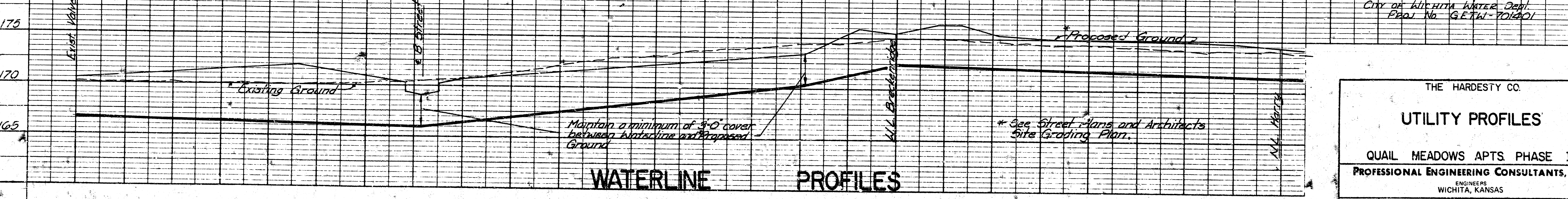
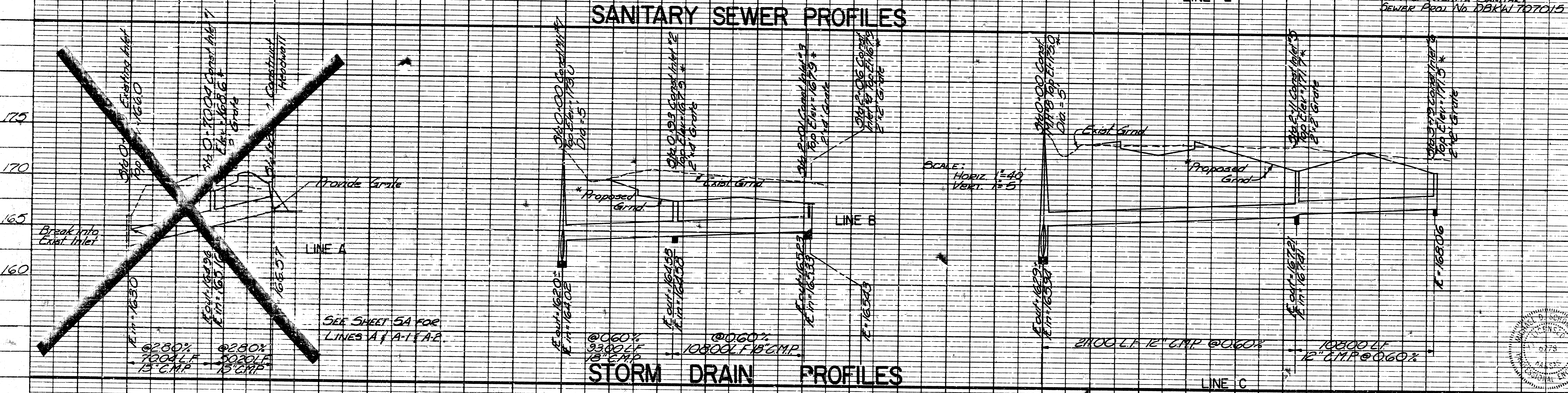
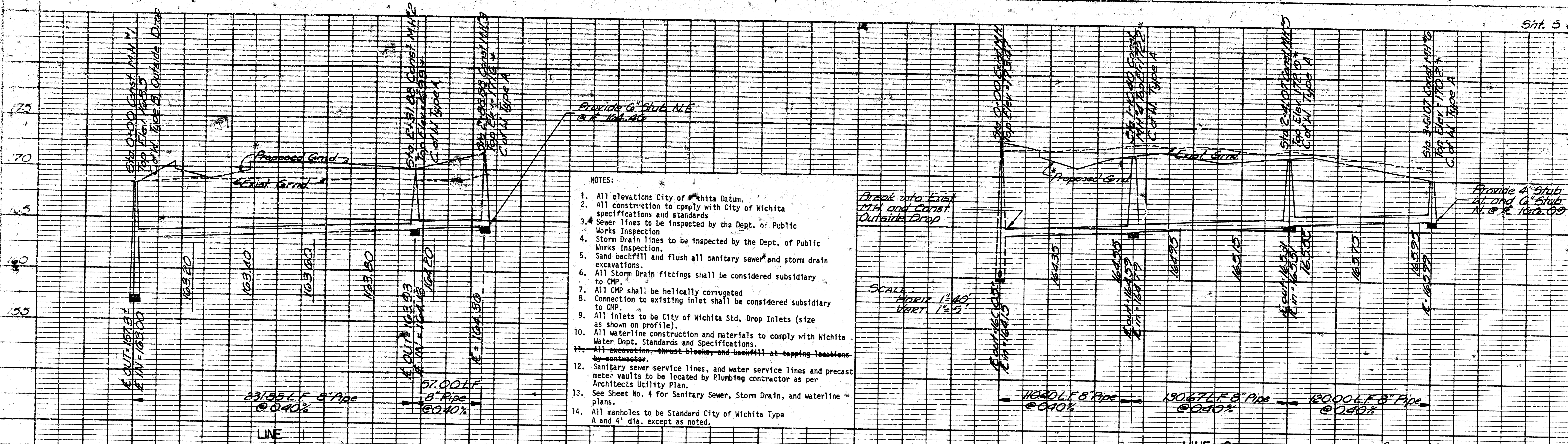
LINE A-1

LINE A-2

\* See Street Plans & Architectural Site Grading Plan

REV. 4-27-77 - Revised Line A, added Lines A-1, A-2.

The Hardesty Co.  
UTILITY PROFILE  
QUAIL MEADOWS APTS. PHASE  
PROFESSIONAL ENGINEERING CONSULTANTS  
ENGINEERS  
WICHITA, KANSAS  
GLK 4-27-77 20-700



THE HARDESTY CO.

**UTILITY PROFILES**

QUAIL MEADOWS APTS. PHASE II

PROFESSIONAL ENGINEERING CONSULTANTS, P.A.

ENGINEERS WICHITA, KANSAS

Designed by **GLK** Checked by **MDS**

Drawn by **GLK/CK** Date **3-25-77** Job No. **77-2**