

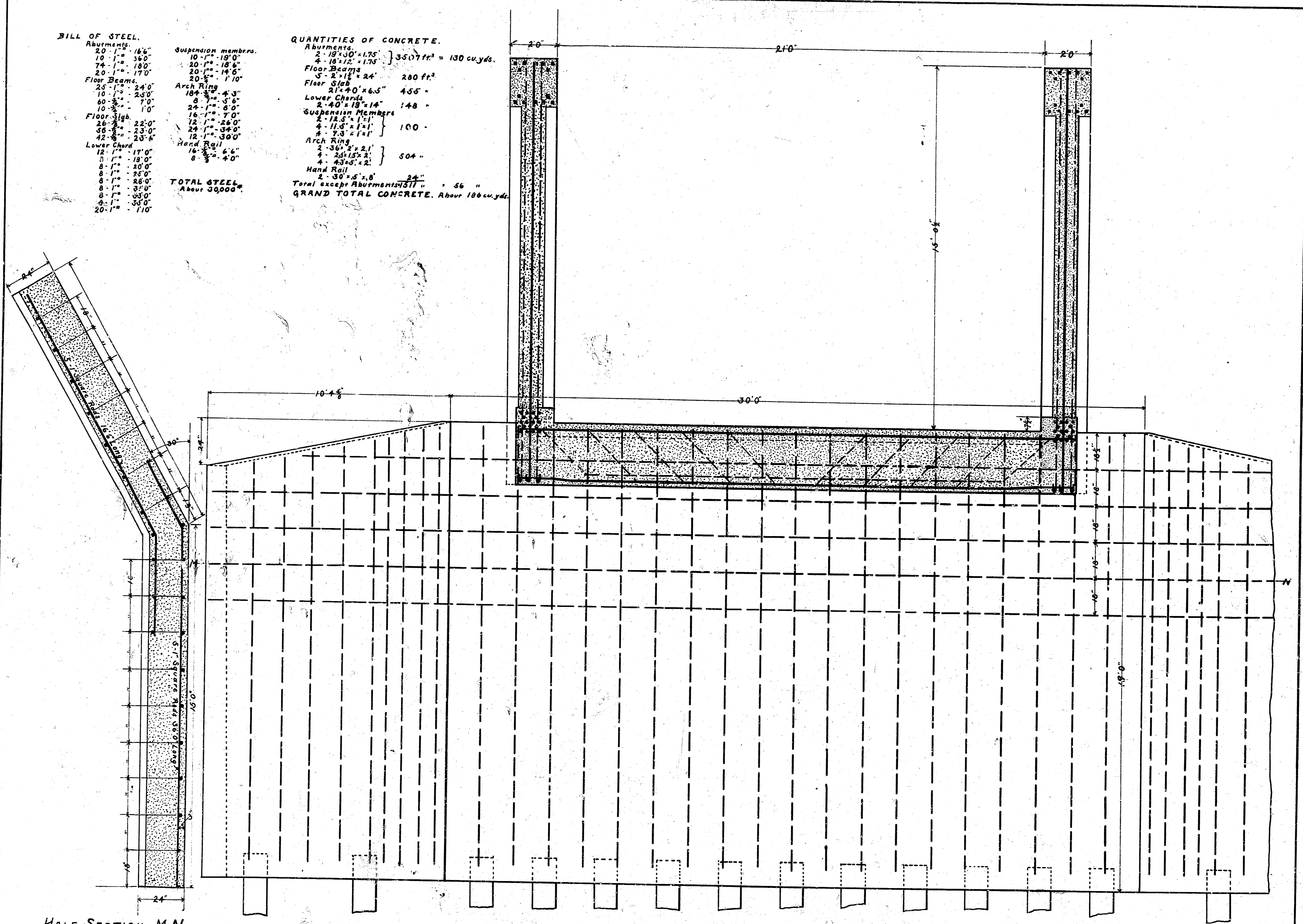
BILL OF STEEL

Abutments	20" x 16"	Suspension members	10" x 18"
18" x 16"	10" x 18"	20" x 18"	20" x 18"
14" x 18"	20" x 14"	20" x 17"	20" x 17"
Floor Beams	20" x 17"	20" x 17"	20" x 17"
25" x 24"	18" x 4"	Arch Ring	18" x 4"
10" x 23"	8" x 6"	24" x 7"	24" x 7"
60" x 7"	16" x 7"	12" x 26"	12" x 26"
Floor Slab	16" x 7"	28" x 36"	28" x 36"
26" x 22"	12" x 30"	Hand Rail	16" x 6"
48" x 23"	16" x 4"	8" x 4"	8" x 4"
12" x 23"	8" x 4"	8" x 4"	8" x 4"
Lower Chord	12" x 11"	8" x 4"	8" x 4"
12" x 11"	8" x 4"	8" x 4"	8" x 4"
8" x 18"	8" x 4"	8" x 4"	8" x 4"
8" x 20"	8" x 4"	8" x 4"	8" x 4"
8" x 28"	8" x 4"	8" x 4"	8" x 4"
8" x 26"	8" x 4"	8" x 4"	8" x 4"
8" x 35"	8" x 4"	8" x 4"	8" x 4"
8" x 35"	8" x 4"	8" x 4"	8" x 4"
20" x 110"	8" x 4"	8" x 4"	8" x 4"

TOTAL STEEL
About 30,000 lbs.

QUANTITIES OF CONCRETE

Abutments	2 - 18' x 10' x 17' } 3507 ft ³ = 130 cu yds.
4 - 16' x 12' x 17' }	
Floor Beams	5 - 2' x 17' x 24' } 240 ft ³
Floor Slab	21' x 9' x 6.5" } 465 -
Lower Chords	2 - 40' x 18' x 16" } 148 -
Suspension Members	2 - 12' x 11' } 100 -
4 - 11' x 11' }	
8 - 7' x 11' }	
Arch Ring	2 - 36' x 21' } 504 -
4 - 24' x 21' }	
4 - 43' x 21' }	
Hand Rail	2 - 30' x 5' x 8" } 26 -
8 - 8' x 4' x 8" }	
Total except Abutments	56 "
GRAND TOTAL CONCRETE	About 186 cu yds.

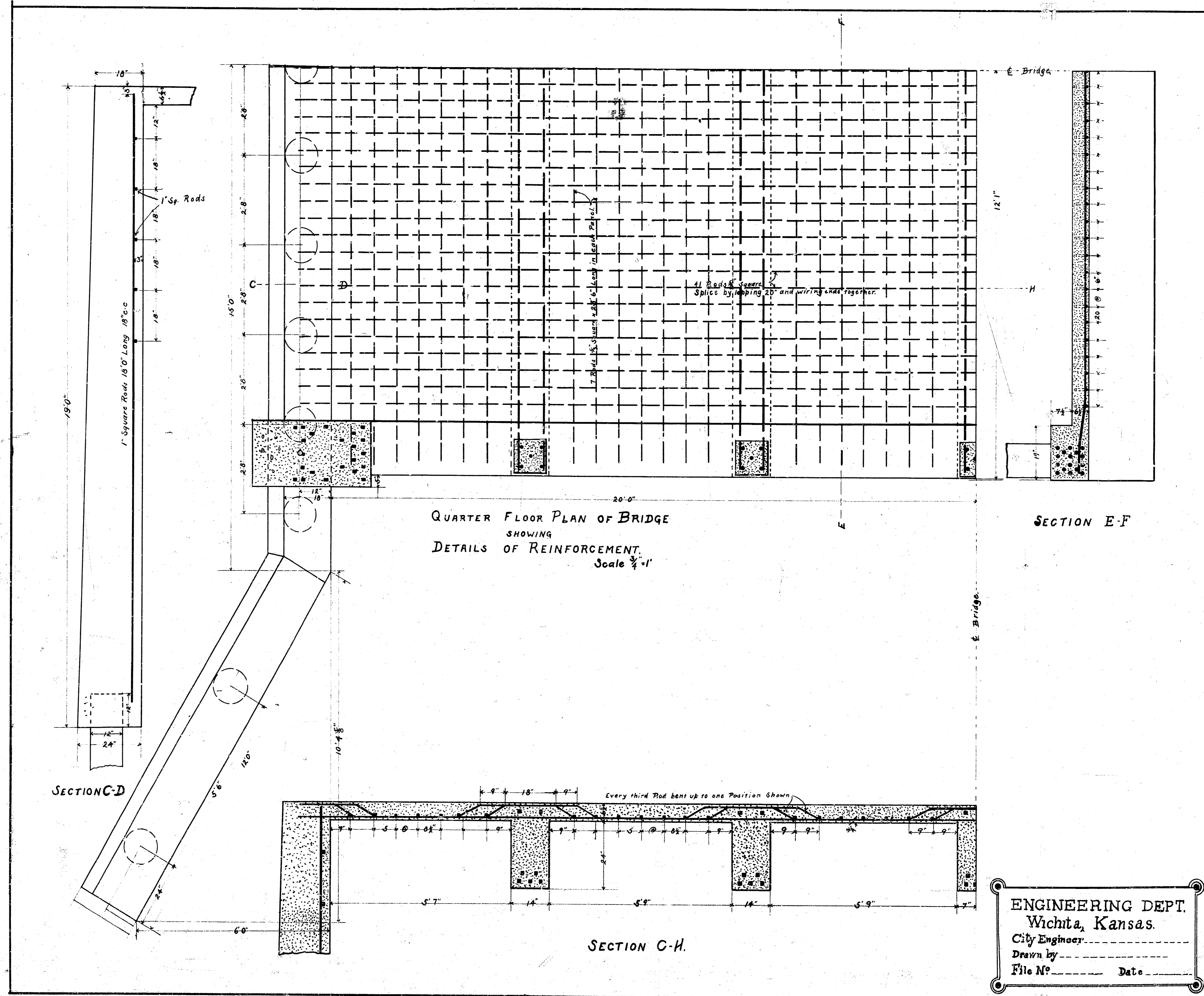


HALF SECTION M-N
Scale 1/2"

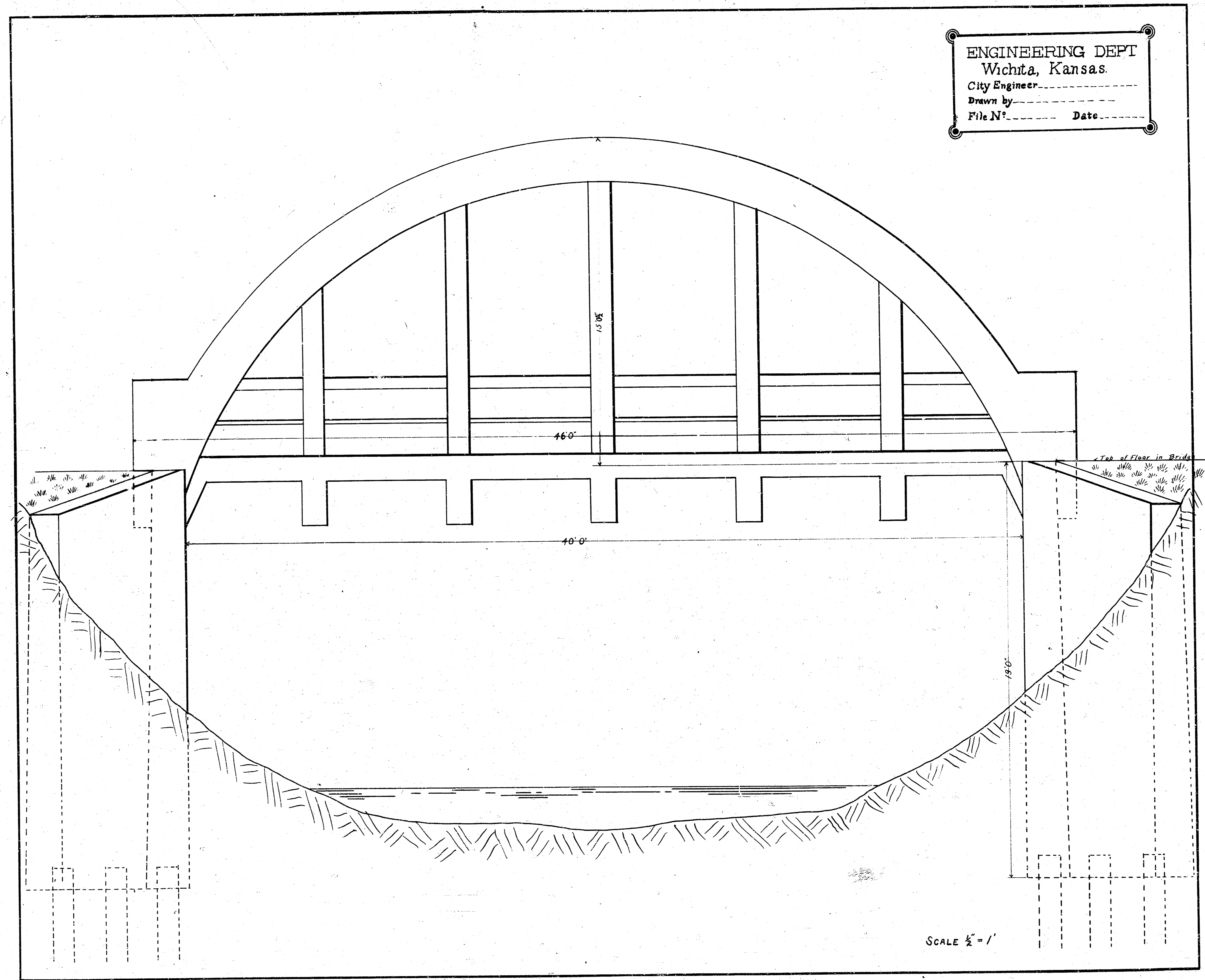
ELEVATION OF ARCH AND ABUTMENT
SHOWING
REINFORCEMENT OF ABUTMENT
Scale 1/2"

ENGINEERING DEPT
Wichita, Kansas.
City Engineer
Drawn by
File No. Date

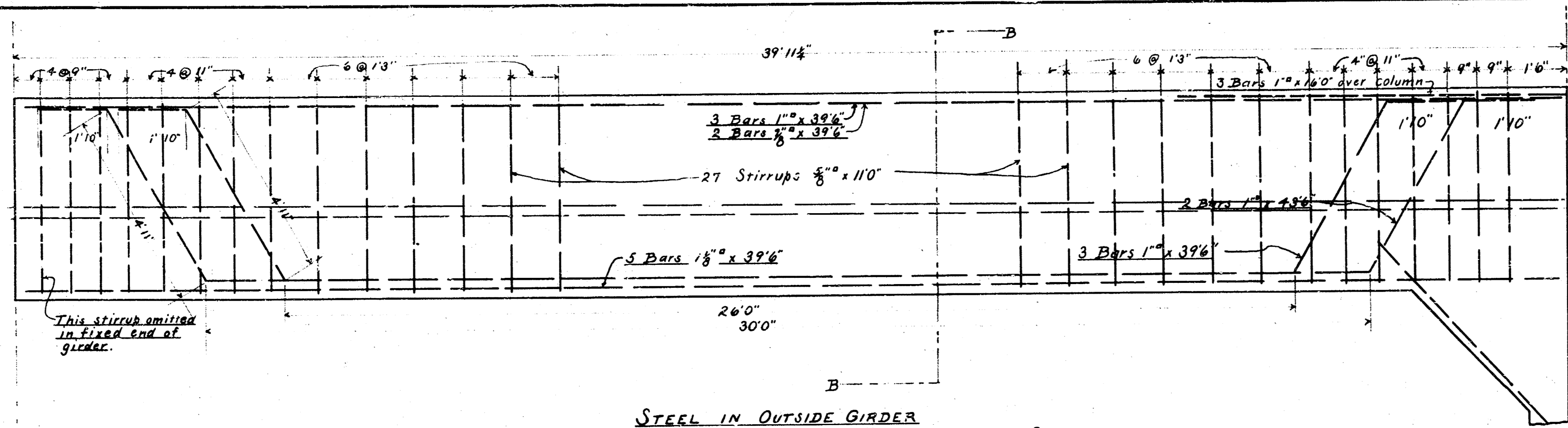
Harry St. Bridge
Drainage Canal



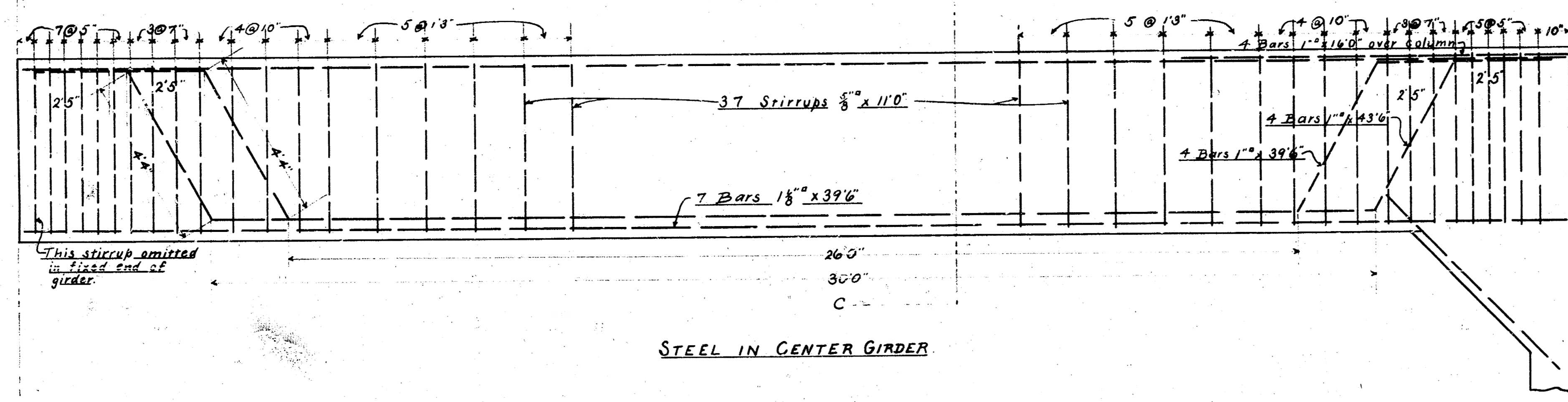
ENGINEERING DEPT
Wichita, Kansas.
City Engineer.....
Drawn by.....
File N°..... Date.....



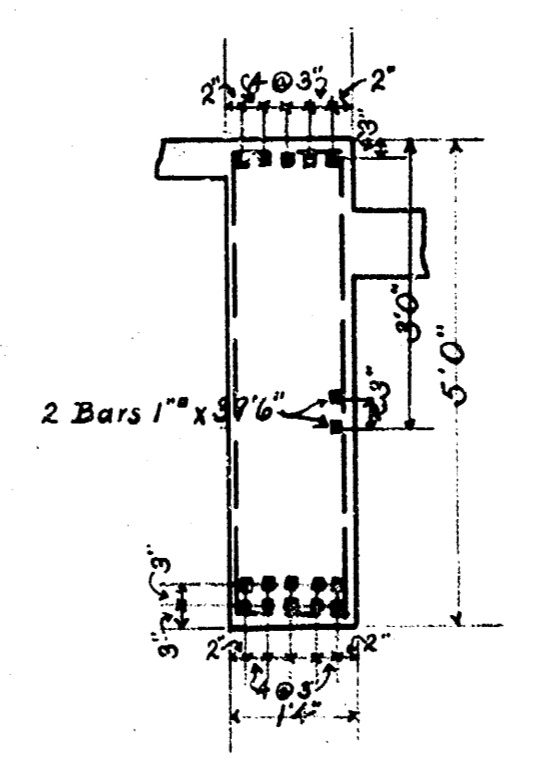
SCALE 1/2" = 1'



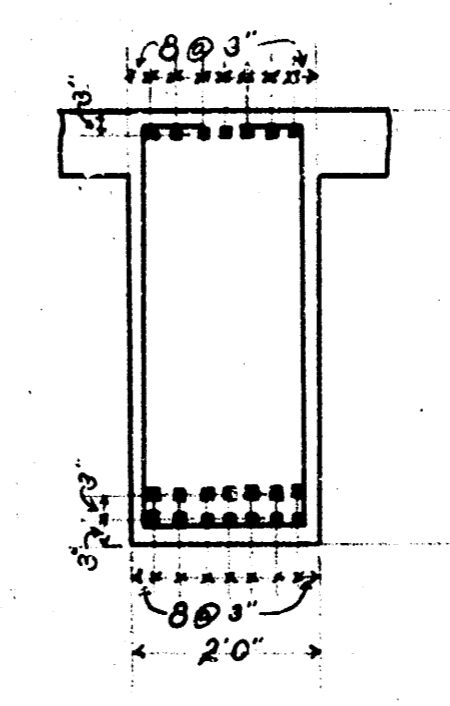
STEEL IN OUTSIDE GIRDER



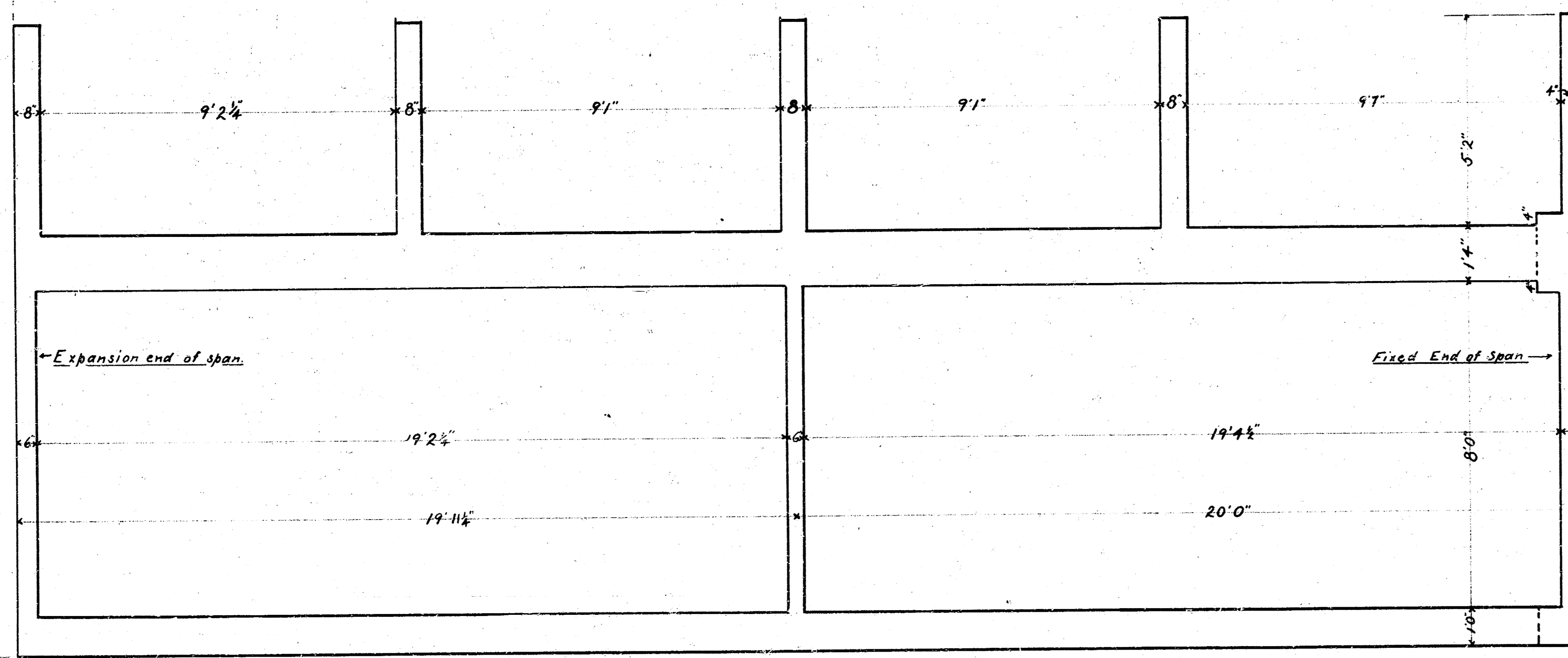
STEEL IN CENTER GIRDER



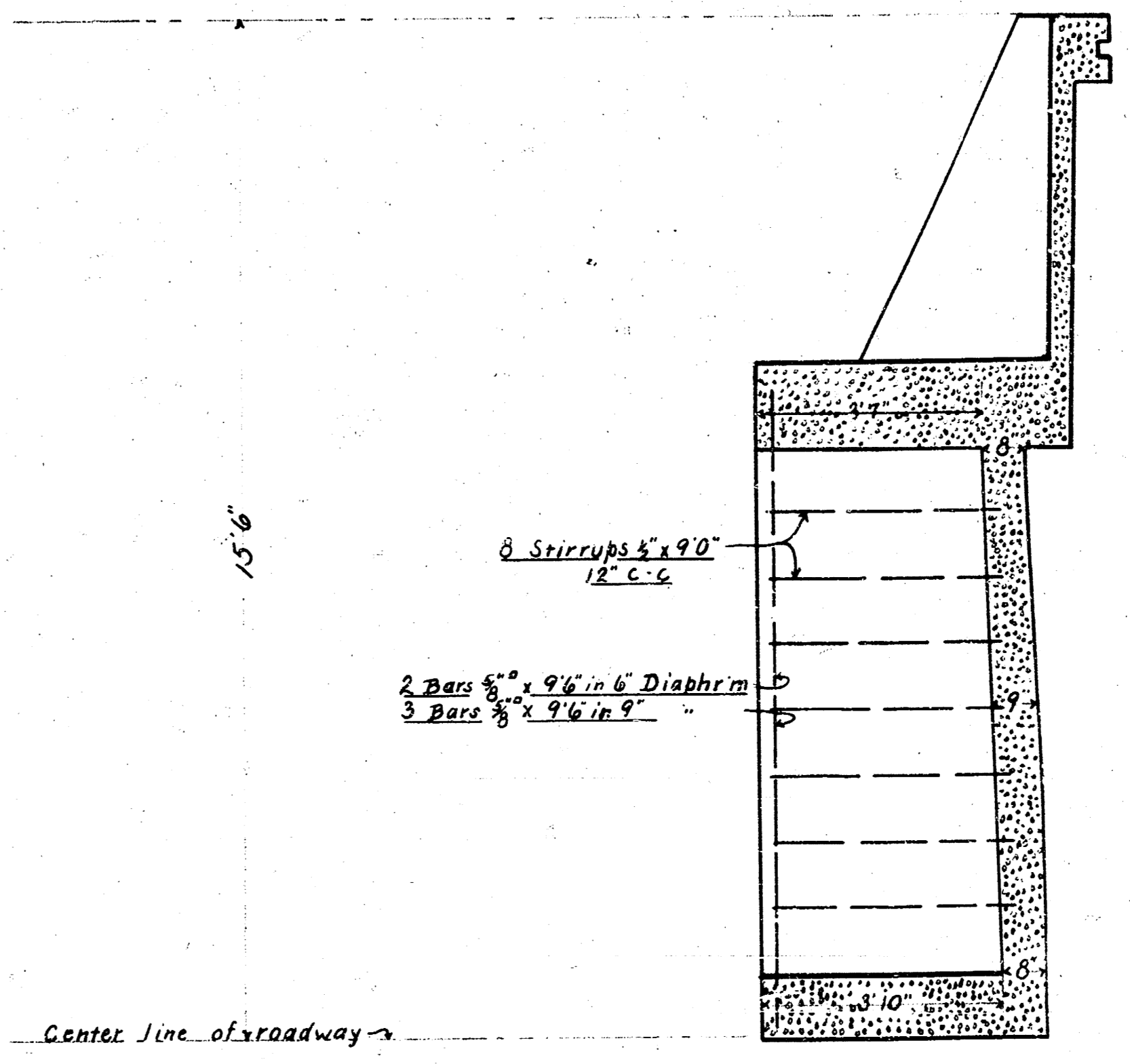
SECTION B-B



SECTION C-C

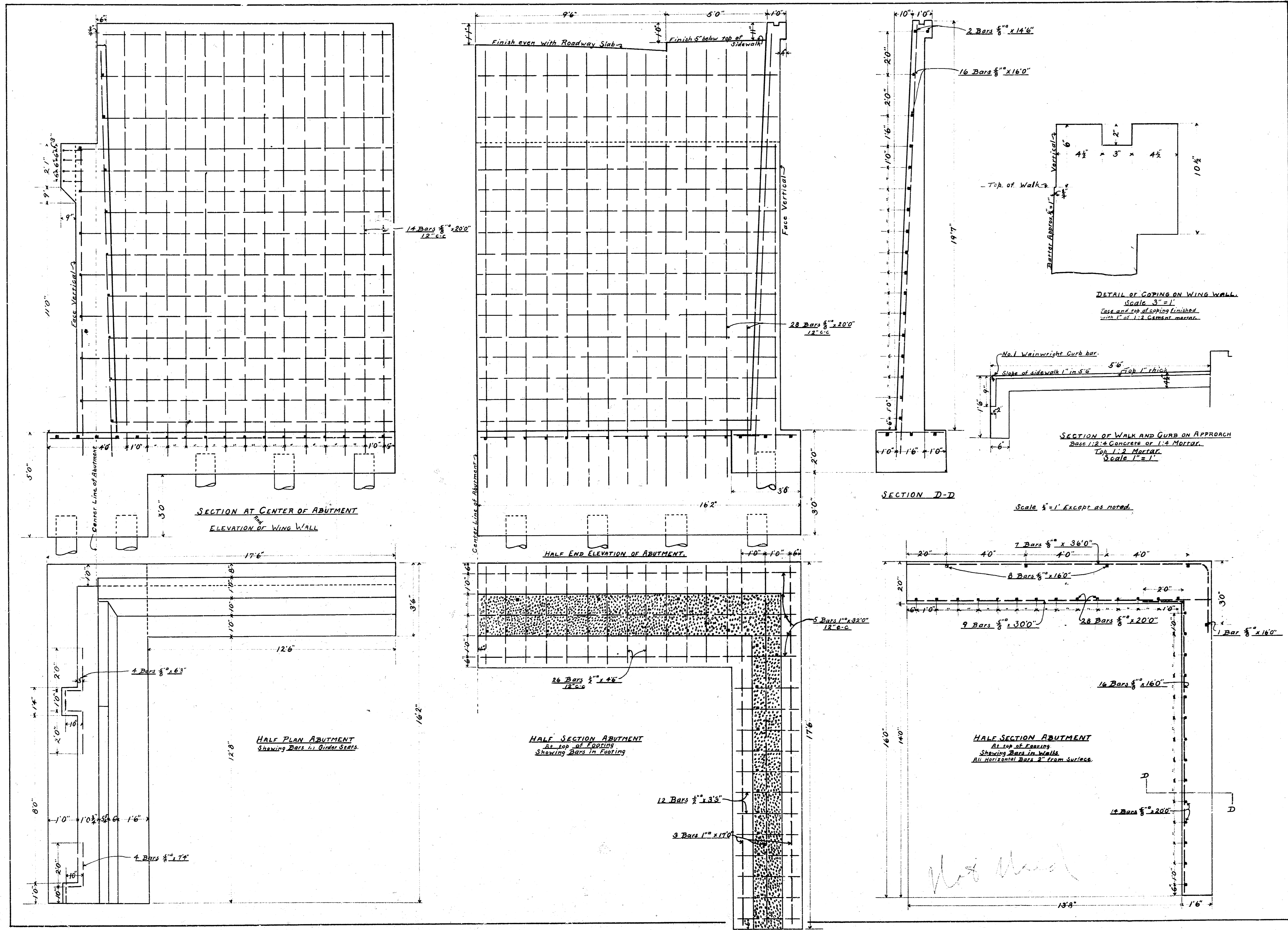


HALF PLAN OF DIAPHRAGMS AND SIDEWALK CANTILEVER BEAMS IN ONE SPAN



STEEL IN DIAPHRAGM

Scale all details on this plate 5/8 to 1"



DETAIL OF COPING ON WING WALL
Scale 3" = 1'
Cope and top of coping finished
with 1" of 1:2 Cement mortar.

SECTION OF WALK AND CURB ON APPROACH
Base 1:2 Concrete or 1:4 Mortar.
Top 1:2 Mortar.
Scale 1" = 1'

Scale 3/4" = 1' Except as noted.

Handwritten signature

