

NOTES:
All roof drain collection system pipe is SDR 35 PVC.
Contours shown are finish contours.
Plan base was traced from "Site Plan", of Building Plans.

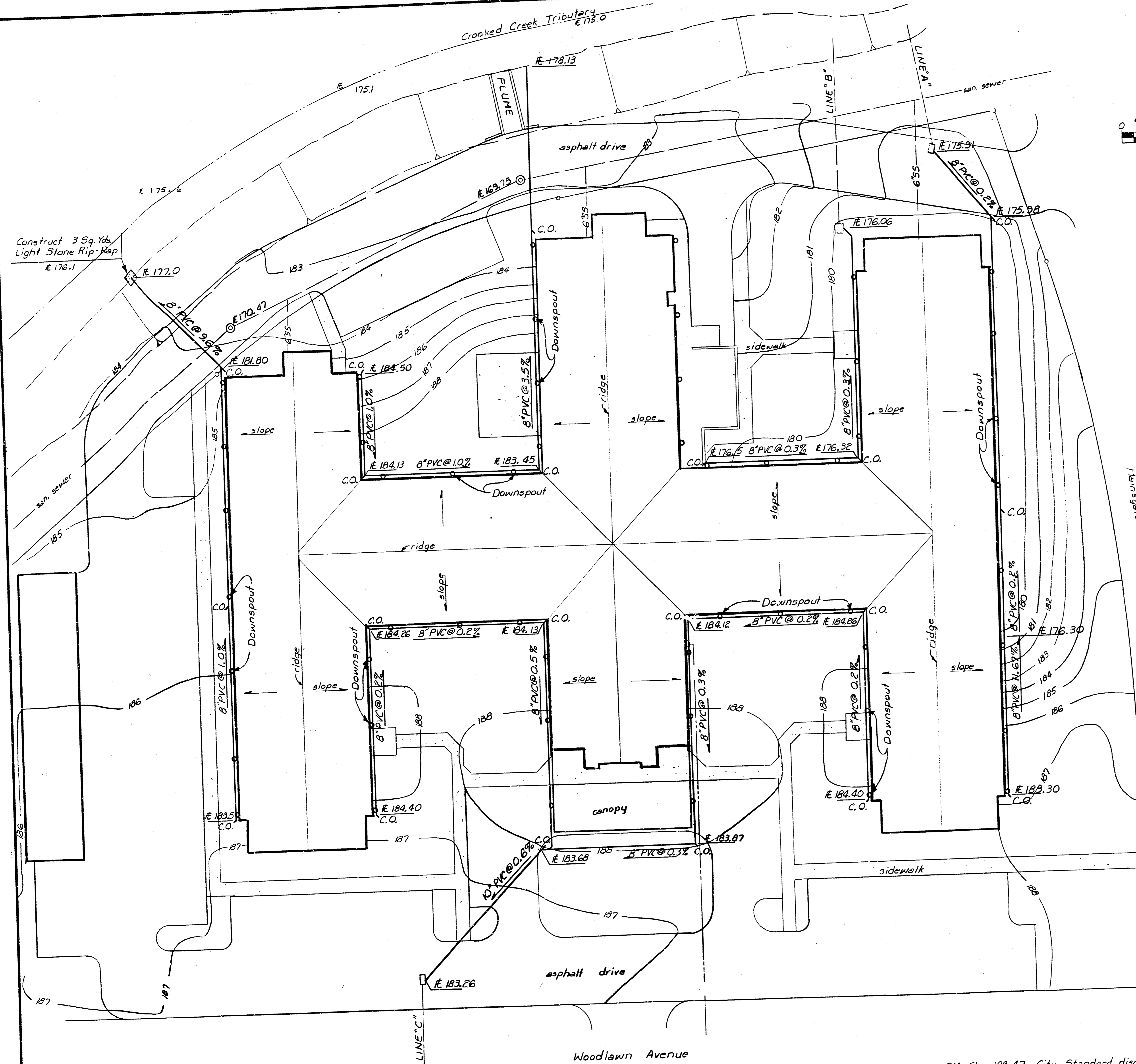
APPROVED AS NOTED
By CITY ENGINEER OF WICHITA
Sanitary Sewers *[Signature]*
Storm Sewers *[Signature]*
Driveway Approaches _____

NOTE TO CONTRACTOR
This project will be constructed under the supervision of the CITY ENGINEER and conforming to the SPECIFICATIONS of the CITY OF WICHITA. The CONTRACTOR will prepare the City of Wichita for all costs of Inspection.



dp	SEDGWICK COMMONS Wichita, Kansas	
	Roof Drain Collection System	
Storm Drain Location Map		
ENGINEER:	CHECKED BY:	
DRAWN BY:	SCALE: <i>Noted</i>	
DATE: Dec, 1984	SHEET 1 OF 5	

P&E & ASSOCIATES
CONSULTING ENGINEERS

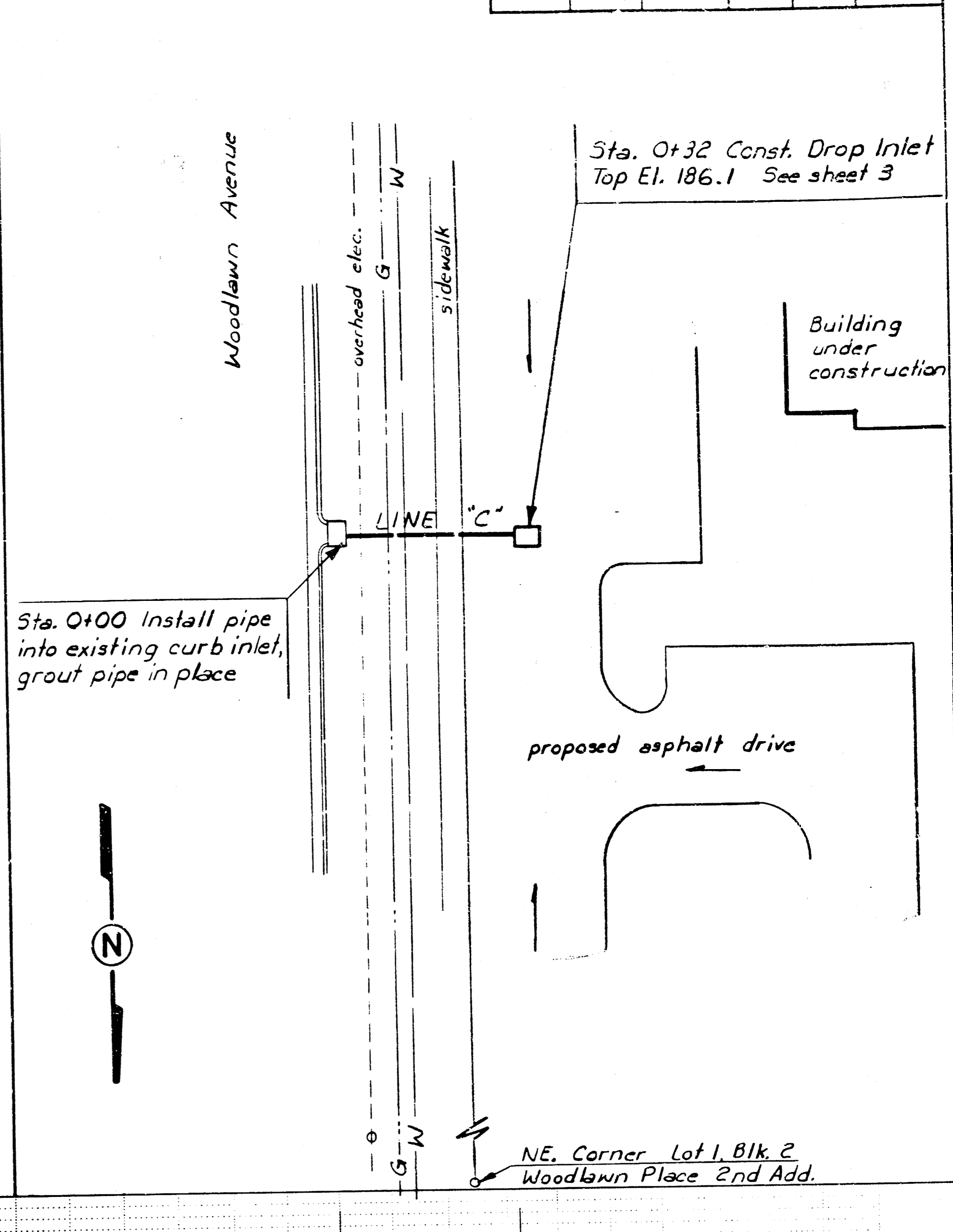
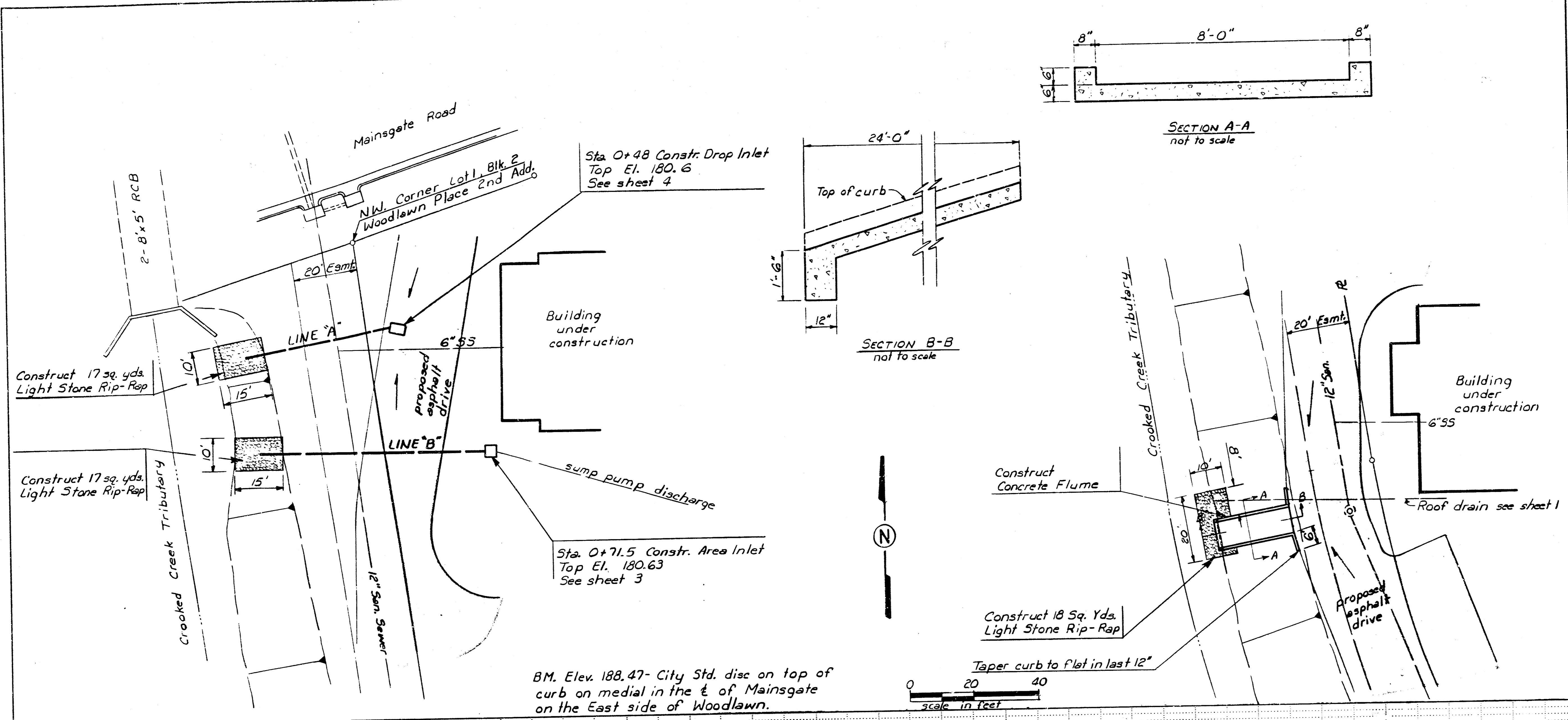


BM. Elev. 188.47 City Standard disc on top of curb on medial in the E of Mainsgate on the East side of Woodlawn.

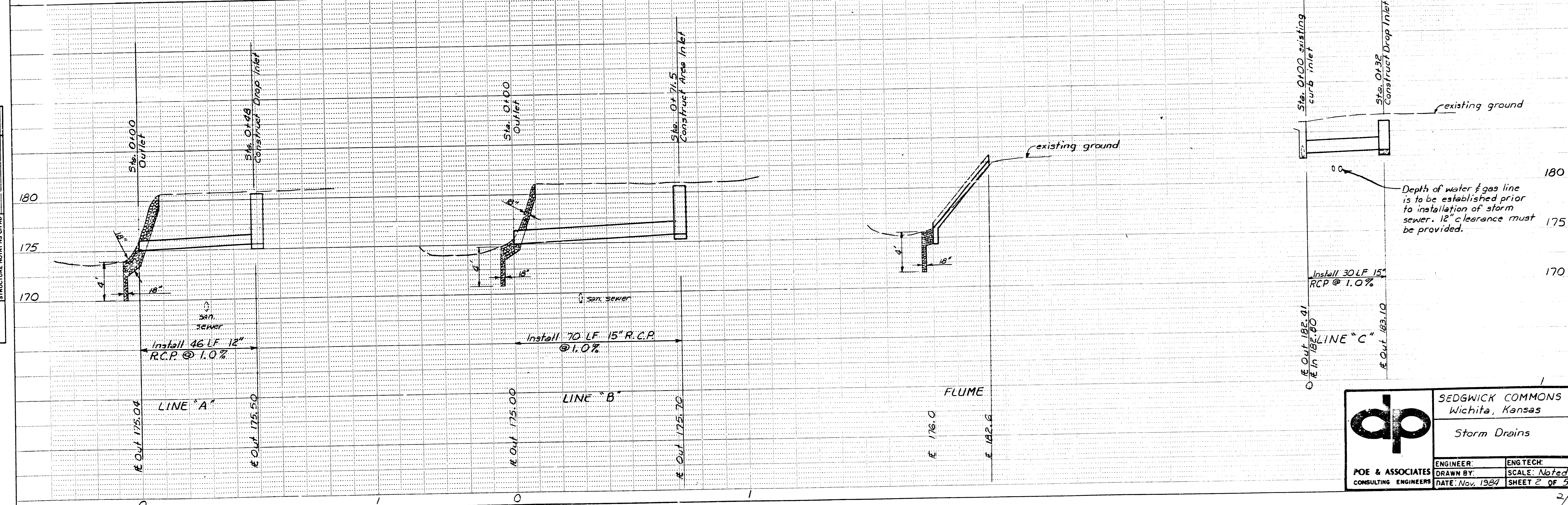
FILMED FROM THE BEST AVAILABLE COPY

STATE	FISCAL YEAR	SHEET NO.	TOTAL SHEETS

DATE	BY
PLAN	
SURVEYED	
ALIGNED	
CHECKED	
NOTE BOOK	
NO.	

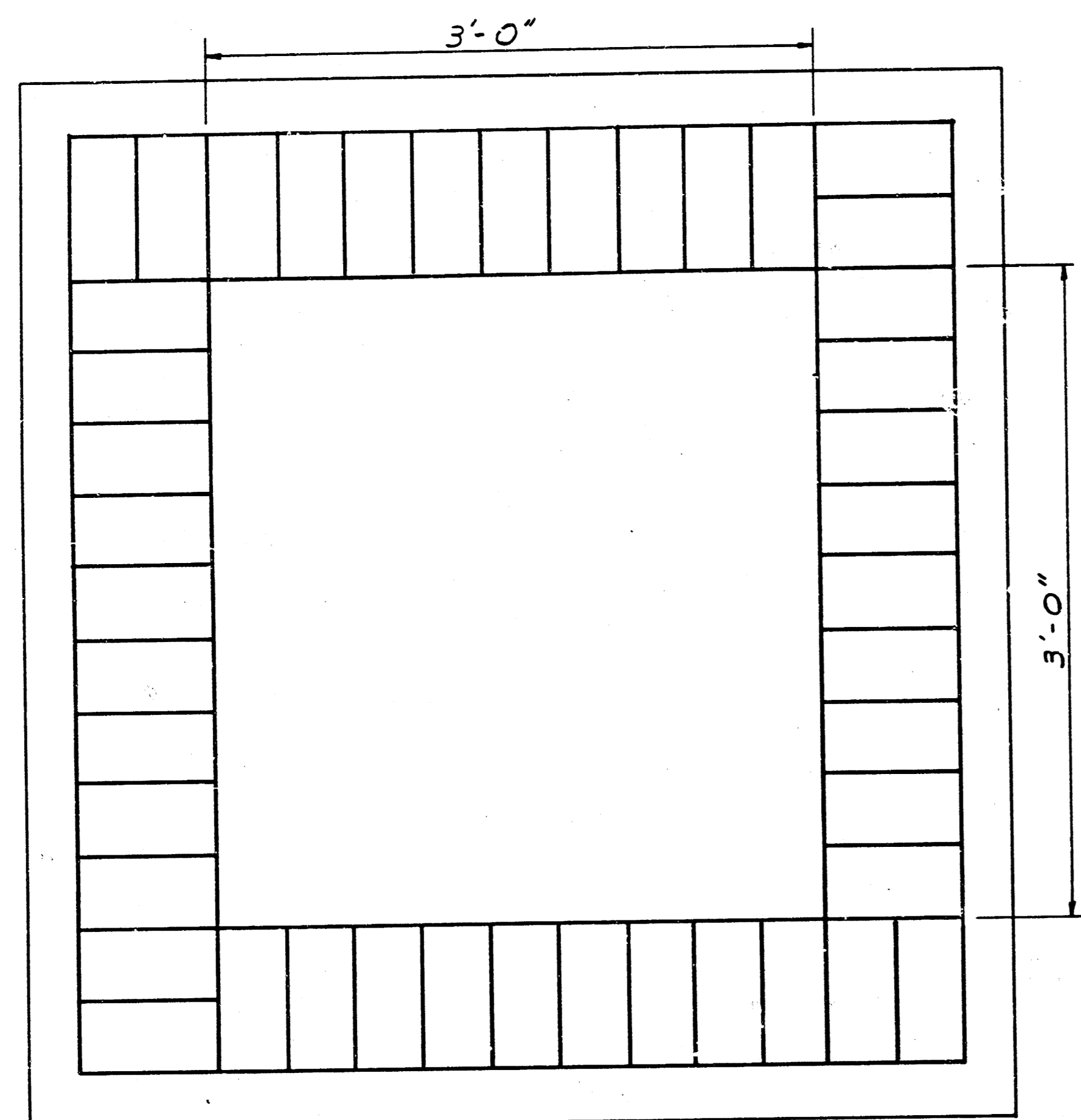


DATE	BY
PROFILE	
SURVEYED	
GRADES CHECKED	
NOTE BOOK	
NO.	

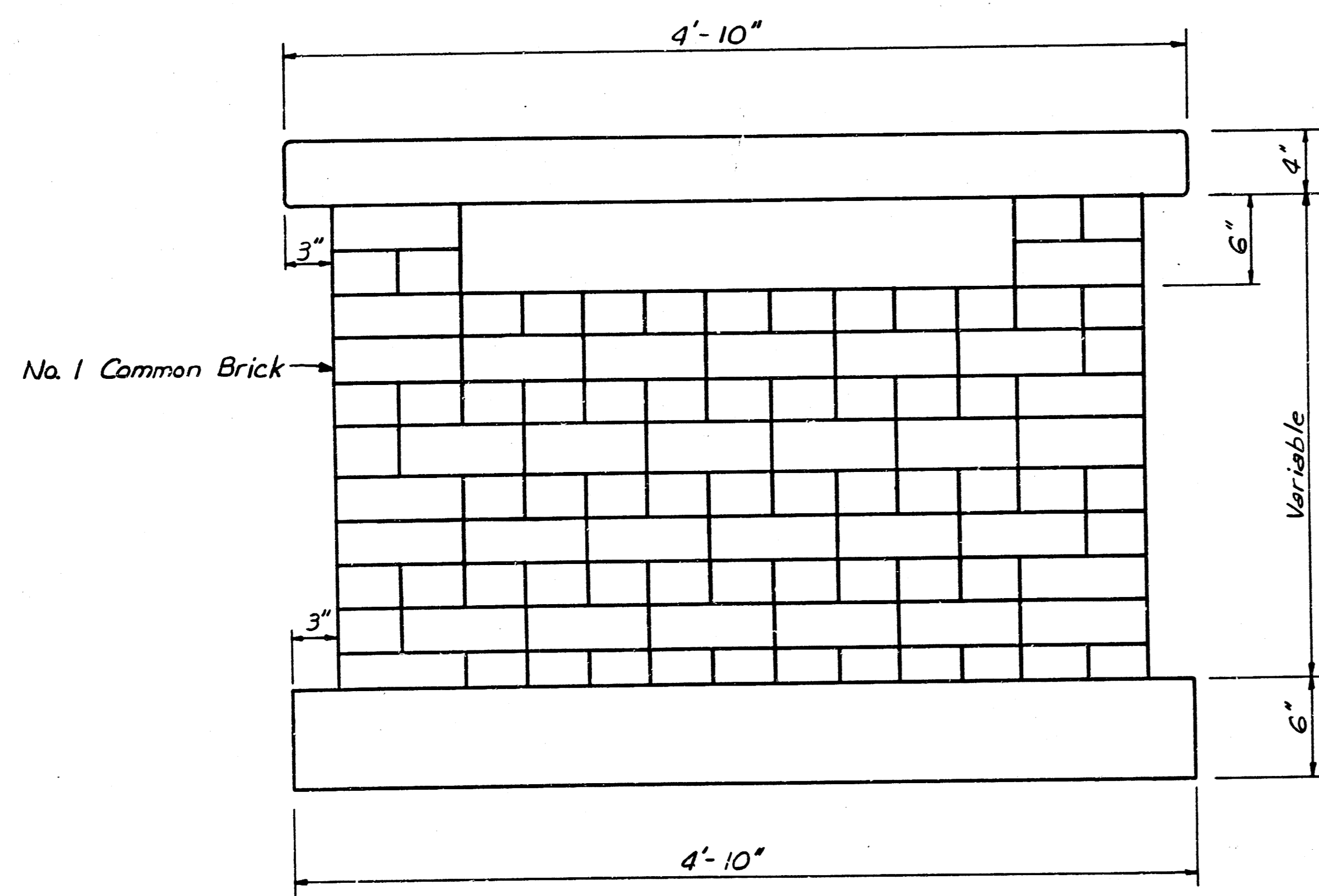


	SEDGWICK COMMONS Wichita, Kansas	
	Storm Drains	
ENGINEER: POE & ASSOCIATES CONSULTING ENGINEERS	DRAWN BY: DATE: Nov. 1984	ENG. TECH: SCALE: Noted SHEET 2 OF 5

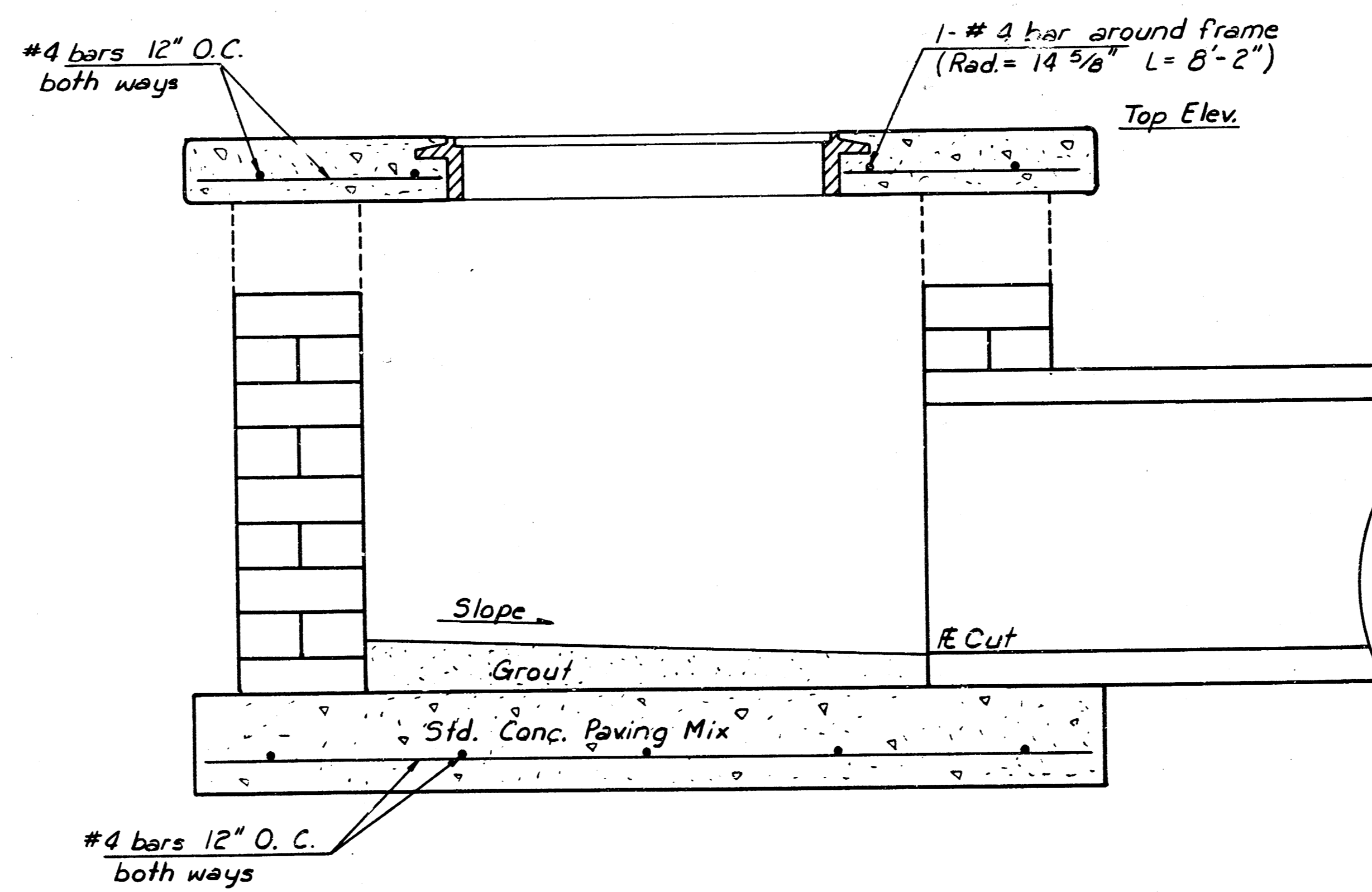
FILMED FROM THE BEST AVAILABLE COPY ...



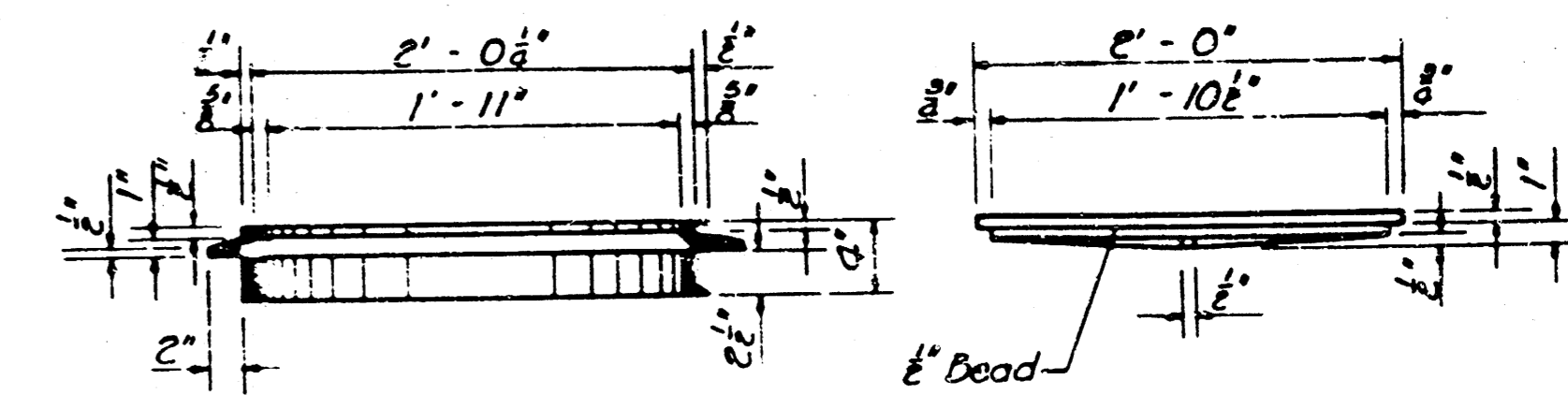
PLAN
(Deck Removed)



ELEVATION



SECTION



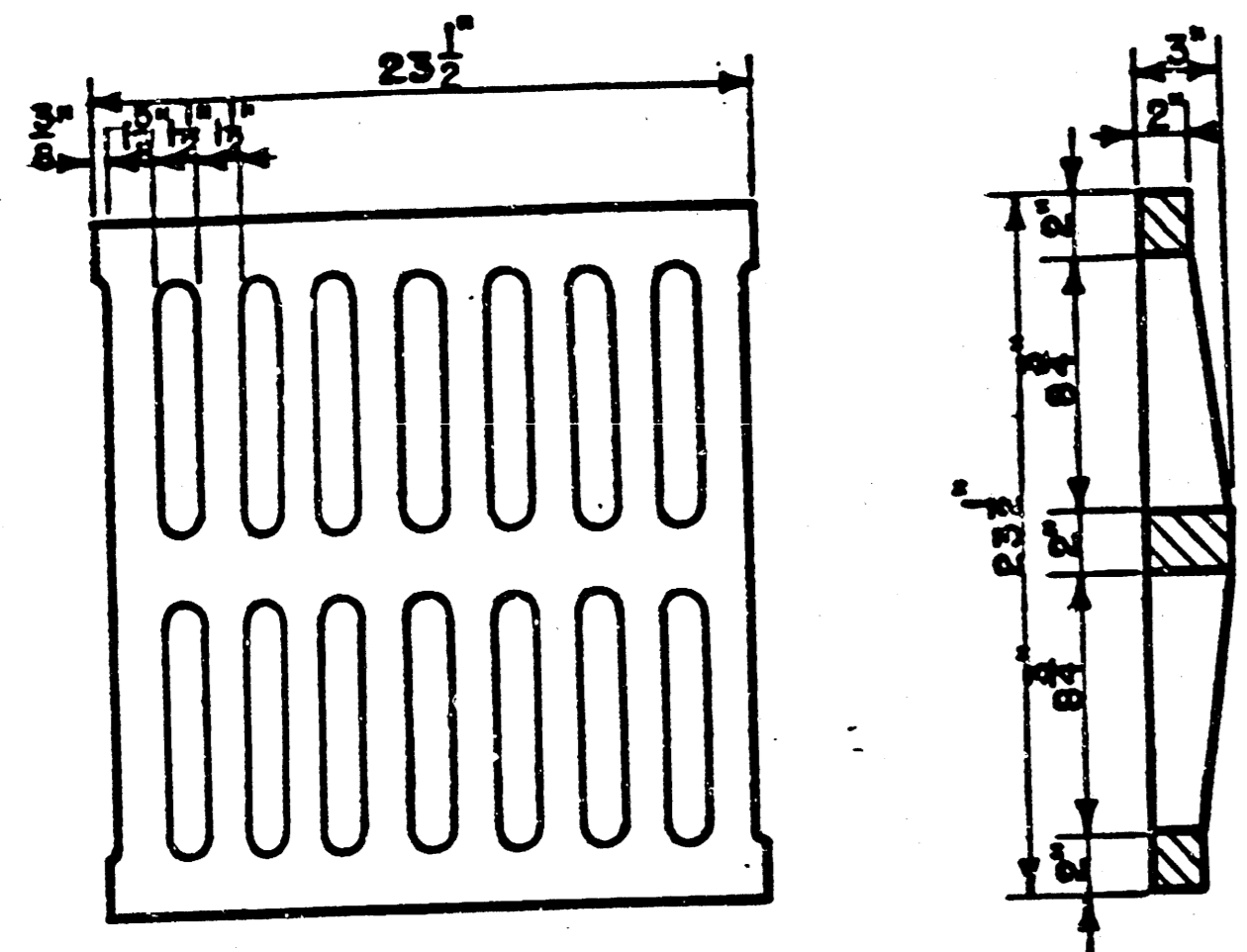
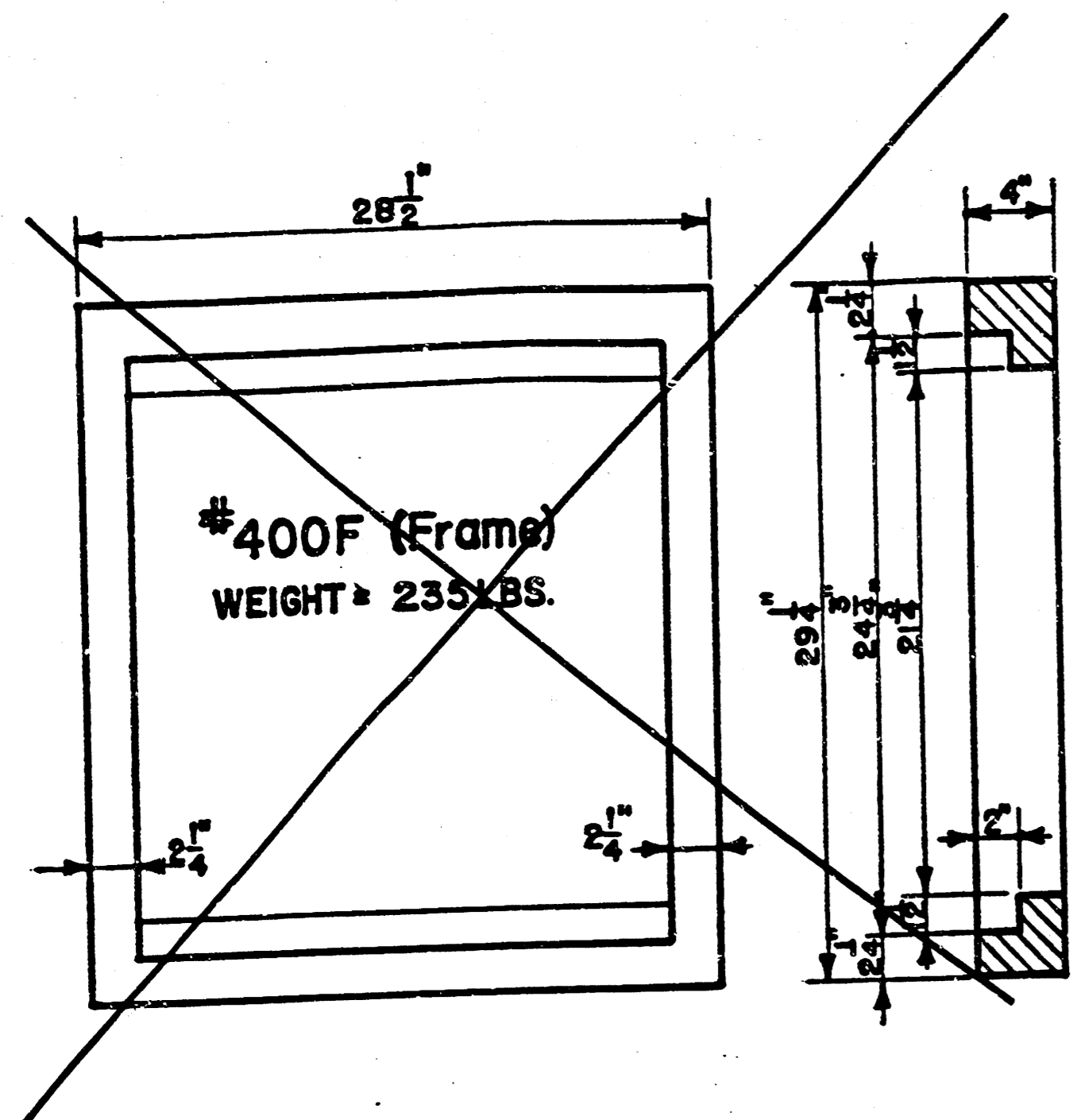
CAST IRON FRAME
(Weight = 53 lbs.)

CAST IRON LID
(Weight = 64 lbs.)

**CAST IRON
LID & FRAME ASSEMBLY**

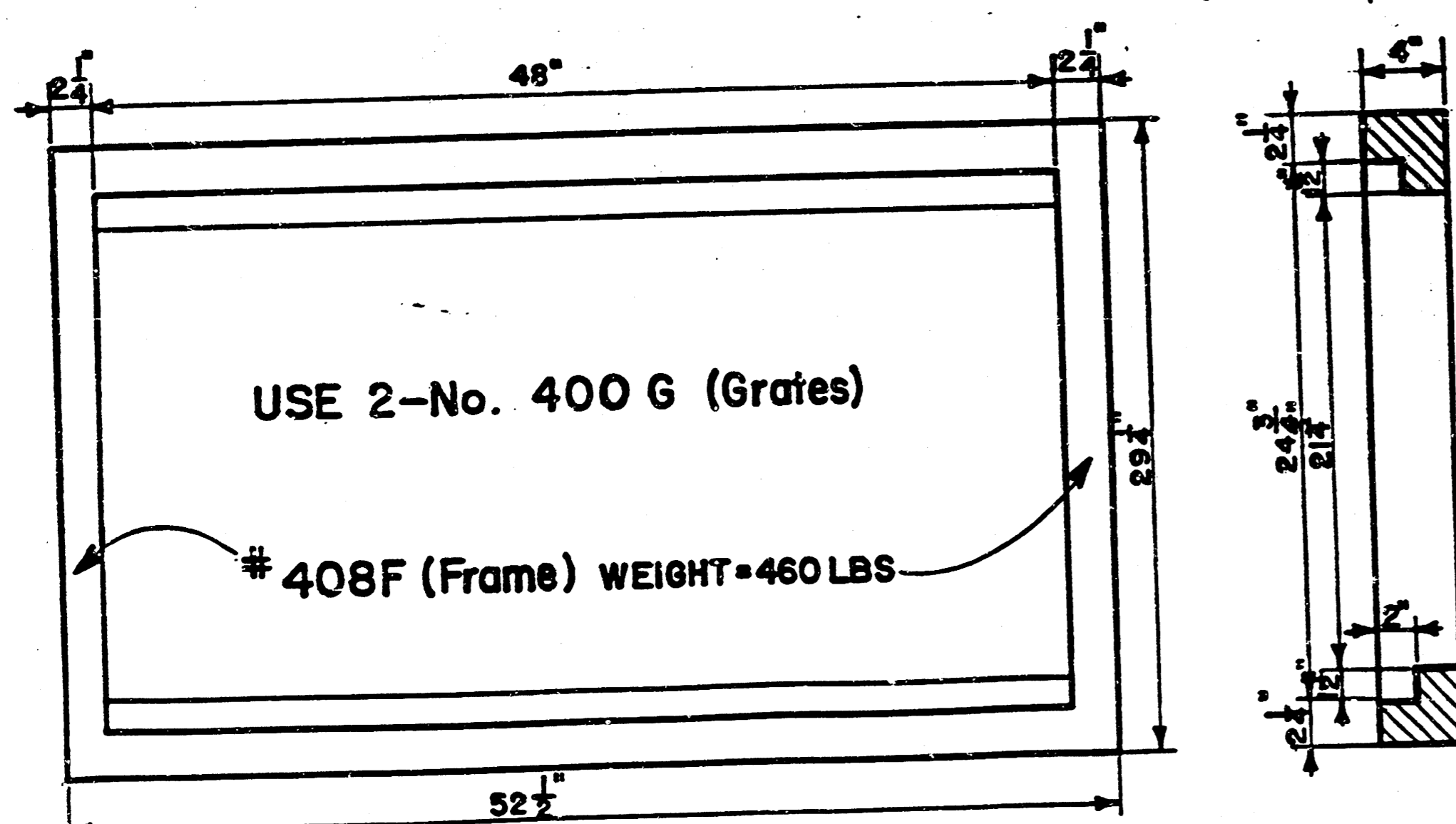
dp	SEDGWICK COMMONS Wichita, Kansas	
	AREA INLET	
ENGINEER:	CHECKED BY:	
DRAWN BY:	SCALE:	
DATE: Nov. 1984	SHEET 3	OF 5

NOTE: Grates shall be imprinted on the top surface with "CITY OF WICHITA" using letters at least 1" in height. Other marking methods may be used only if approved by the engineer.

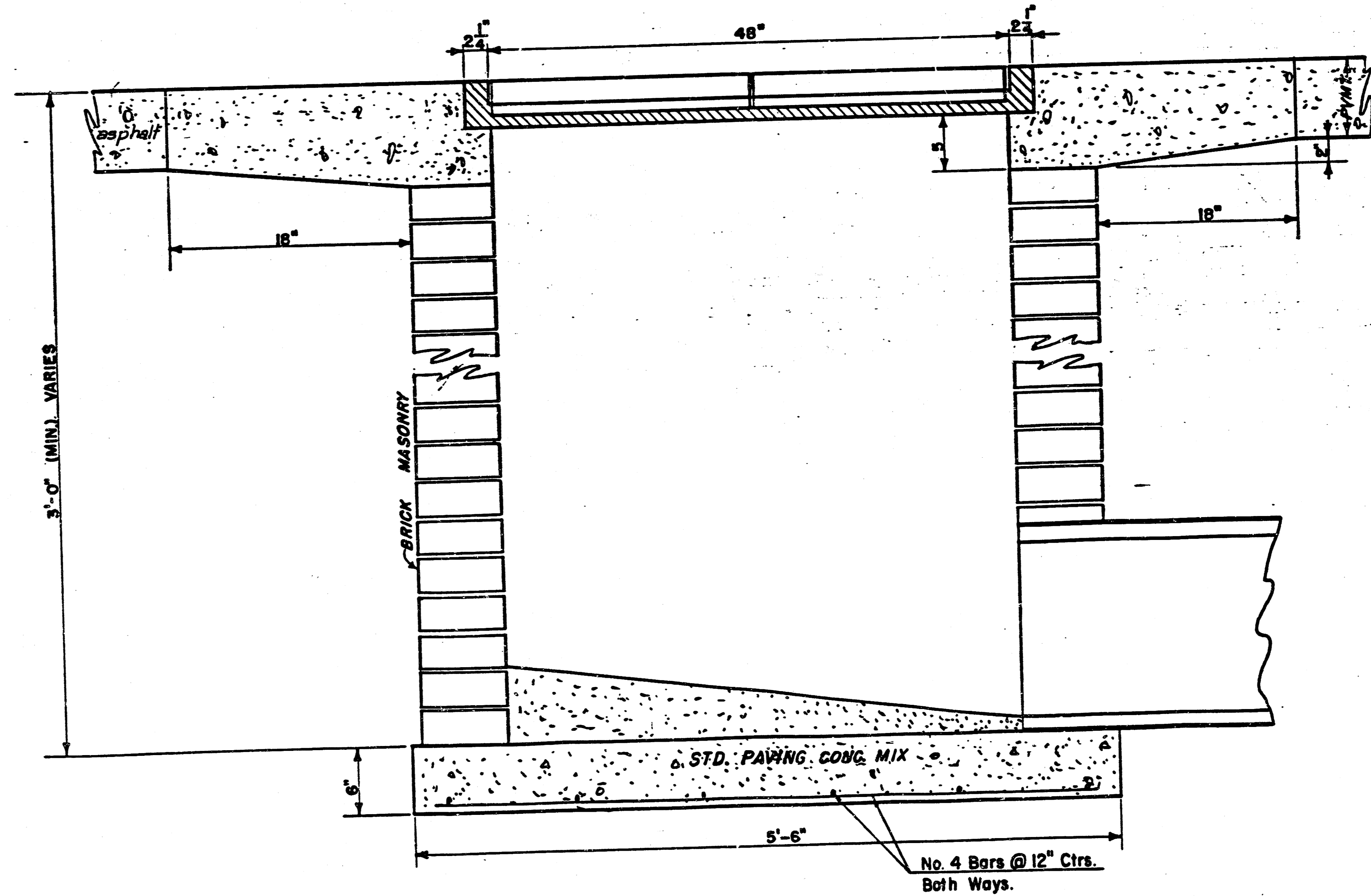
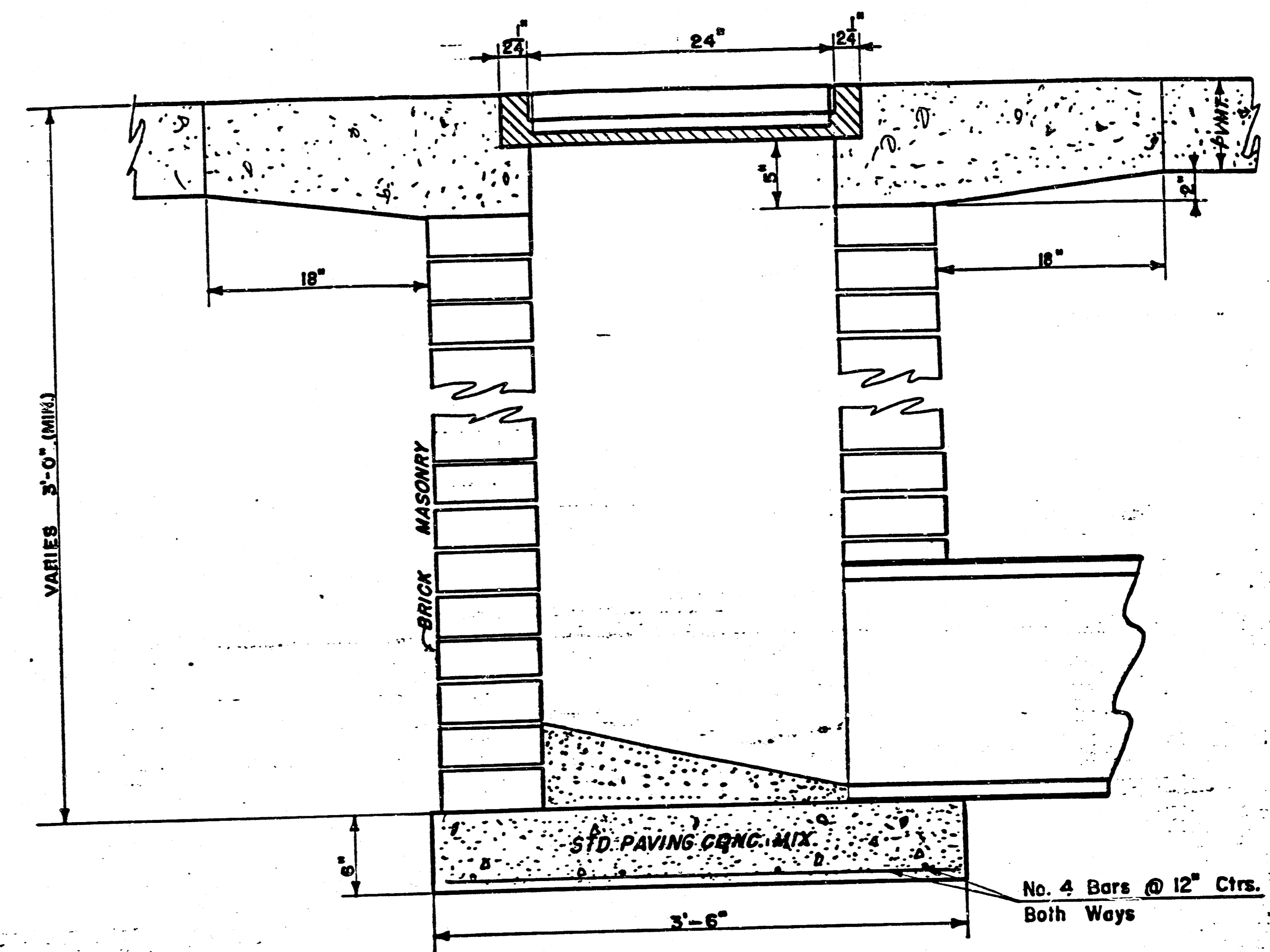
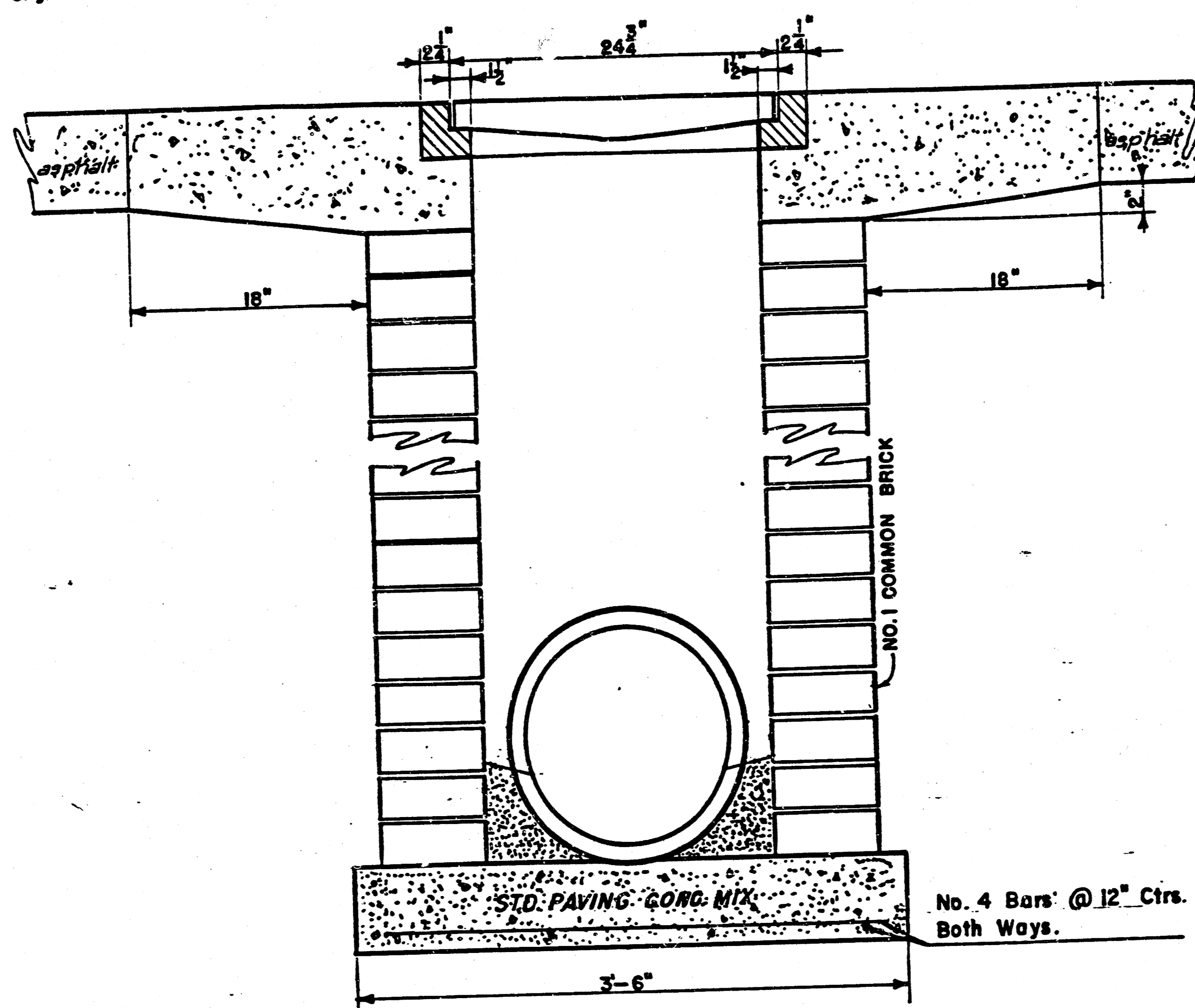


400G (Grate)
WEIGHT = 235 LBS

24"x24" Frame & Grate Detail



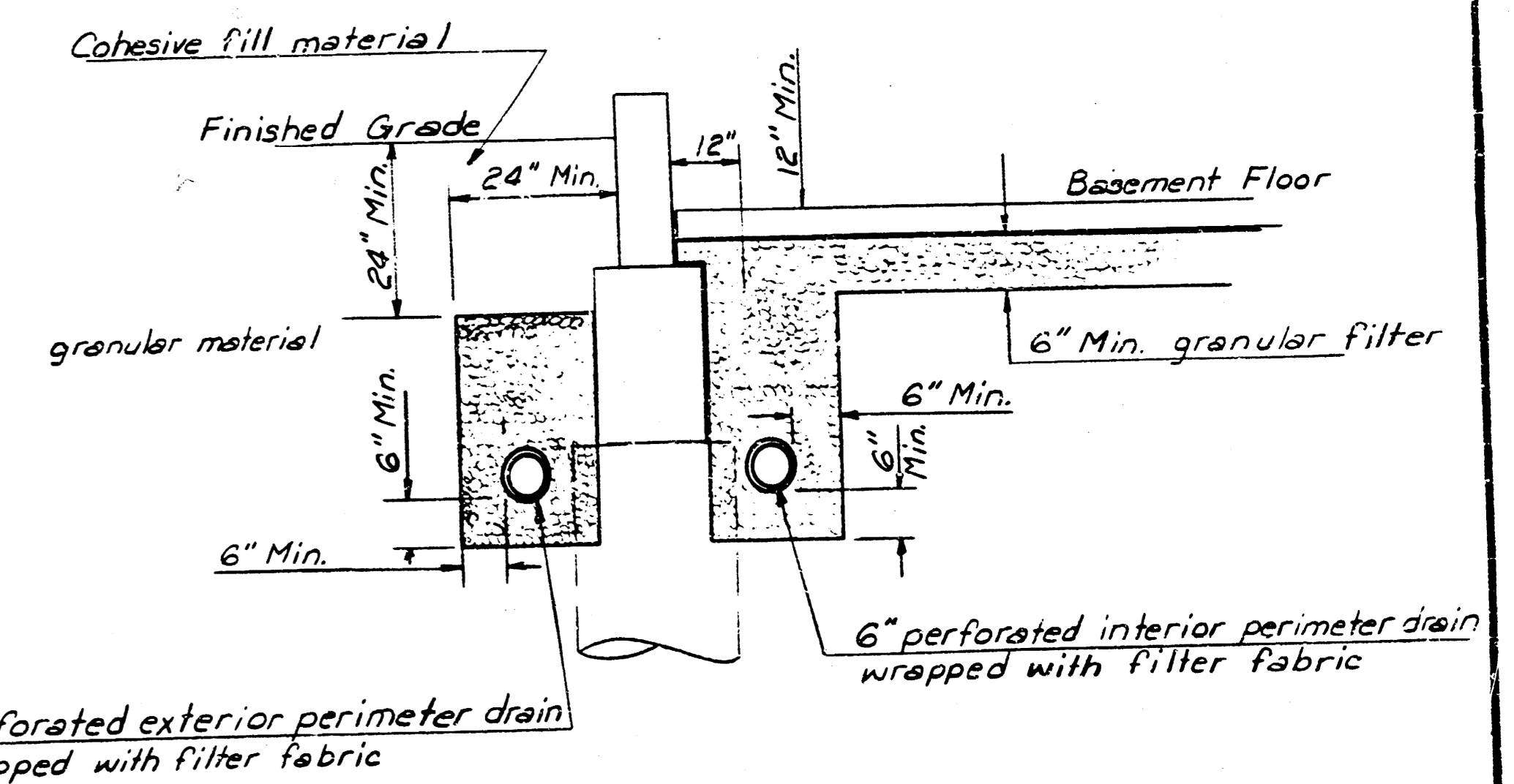
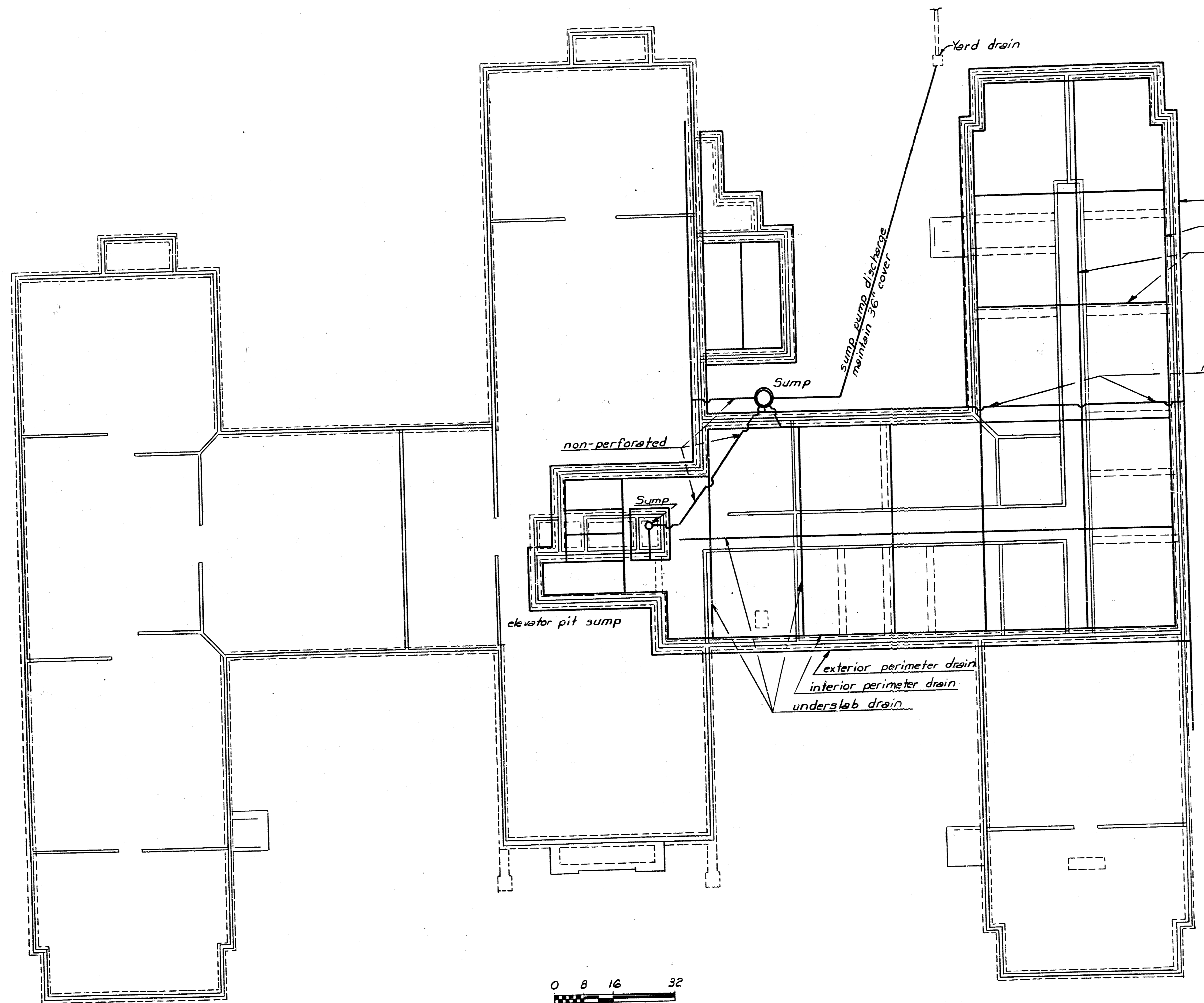
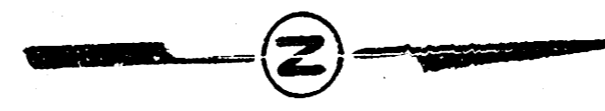
Double 24"x24" Frame Detail



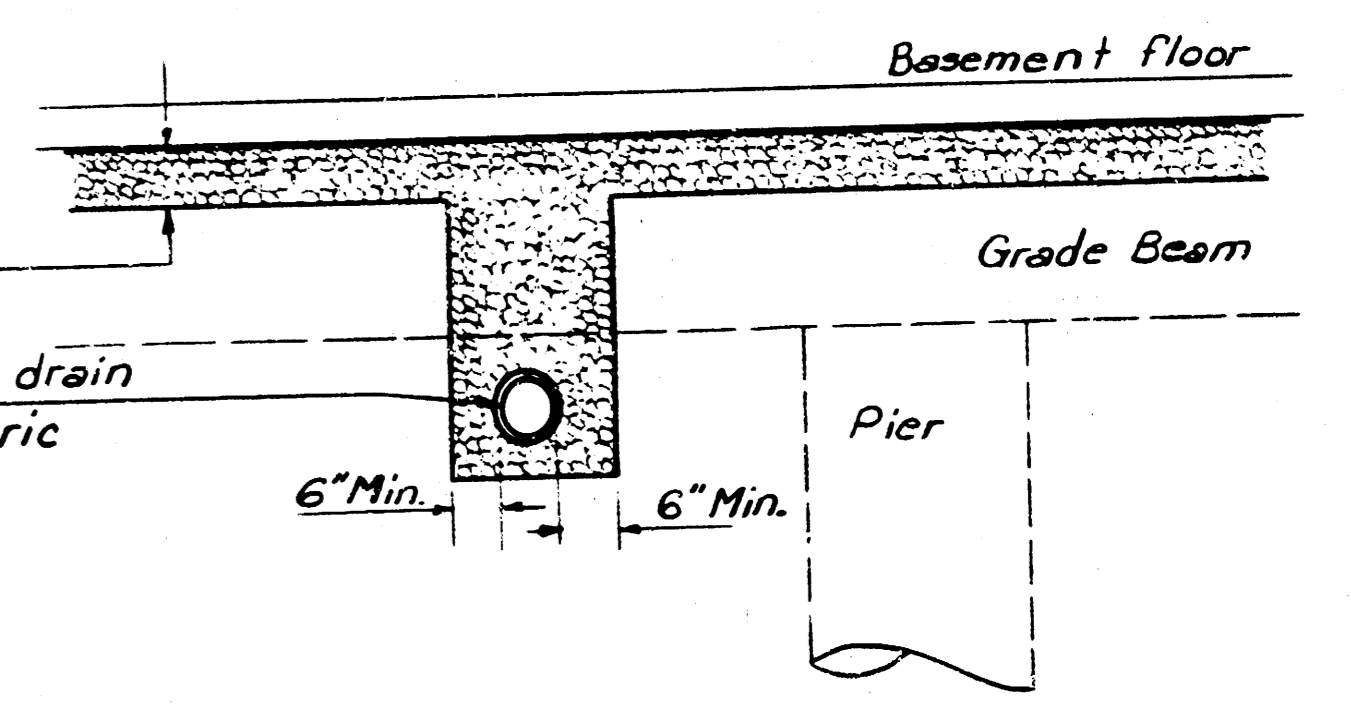
DROP INLET DETAILS

Project SEDGWICK COMMONS
 Project No. _____
 Date: _____
 Scale: 1-1/2" = 1'-0" 4/5

FILMED FROM THE BEST AVAILABLE COPY.....



exterior perimeter drain
interior perimeter drain
underslab drain



UNDERSLAB DRAIN DETAIL
1/2" = 1"

NOTES:
Slope all drains 0.15% toward sump.
All drains are 6" diameter pipe.
See Terracon Consultants, Inc. report (June 20, 1984) and letter (October 31, 1984), for further information and specifications of granular filter material & filter fabric material. Plan base was traced from sheet S-1, (FOUNDATION PLAN), of building plans.
Sump pump, pump discharge piping and electrical connection should be as per manufacturers recommendations.
Elevator pit sump pump; approximate static head 8 feet, discharge pipe length 40 feet.
Main sump pump; approximate static head 4 feet, discharge pipe length 110 feet.

0 8 16 32
Scale in feet
(1/8" = 1')

DRAIN PLAN

dp	SEDGWICK COMMONS Wichita, Kansas	
	Foundation Perimeter Drains and Underslab Drains	
ENGINEER	CHECKED BY:	
POE & ASSOCIATES CONSULTING ENGINEERS	DRAWN BY: W/PF	SCALE: Noted
	DATE: Nov. 1983	SHEET 5 of 5

FILMED FROM THE BEST AVAILABLE COPY

14 9 3 14 5/5