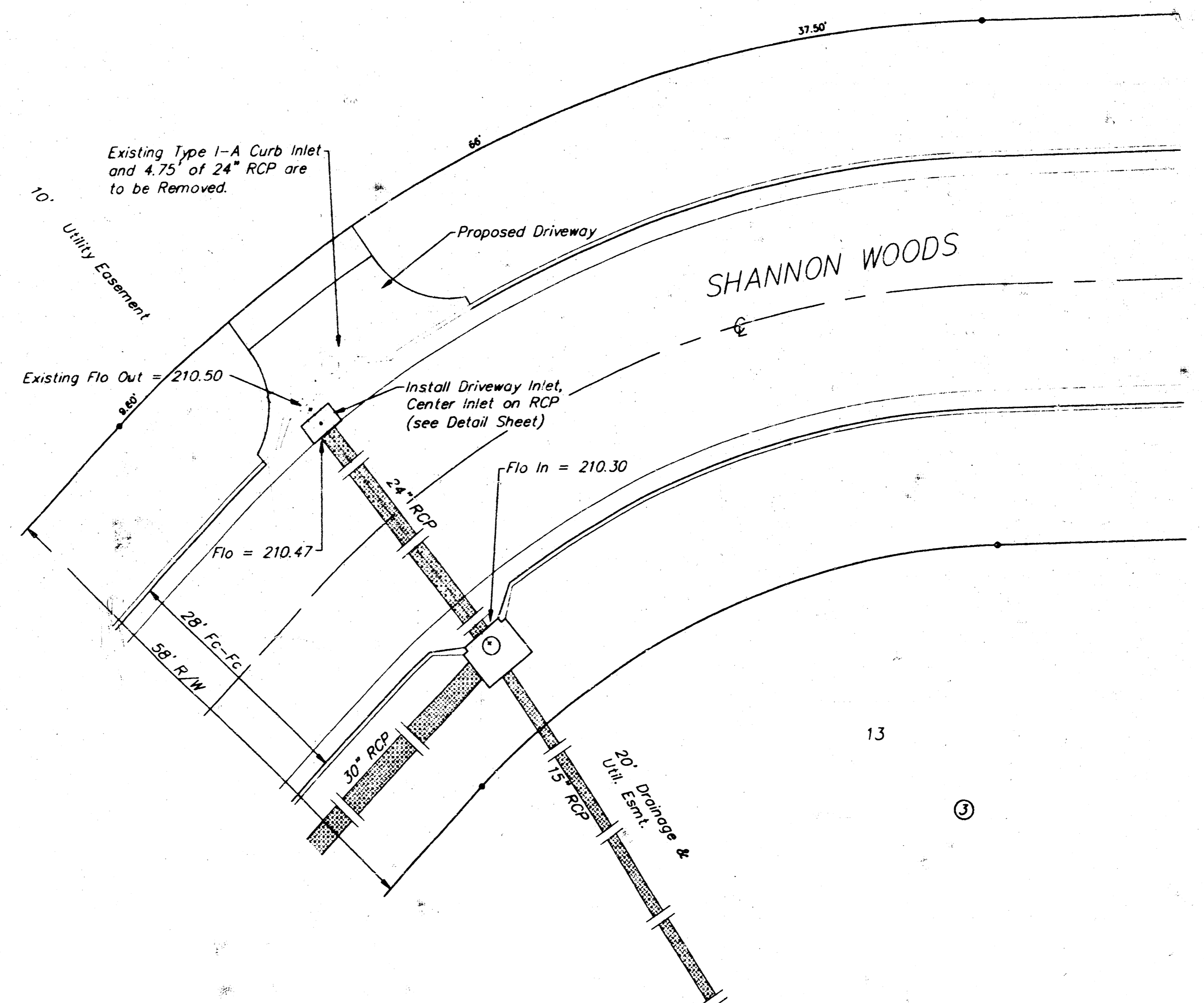
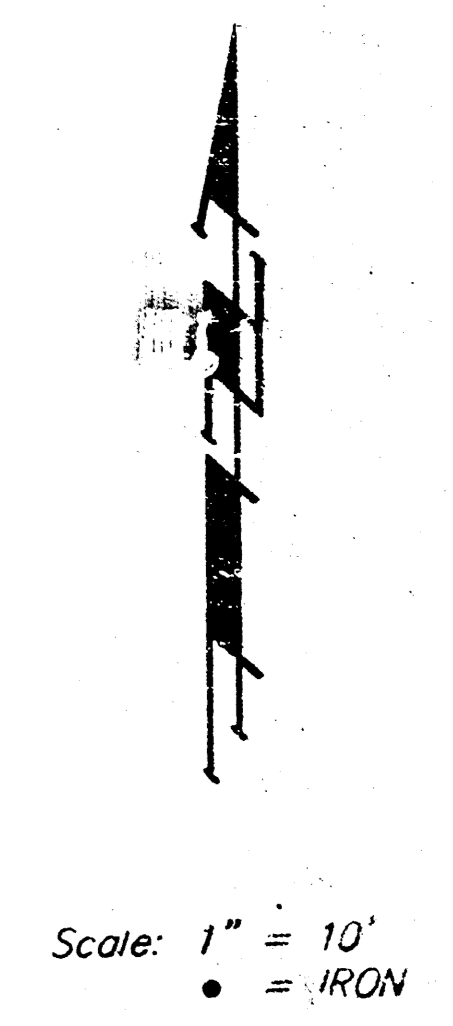


SHANNON WOODS AT TALLGRASS



APPROVED AS NOTED  
By CITY ENGINEER OF WICHITA

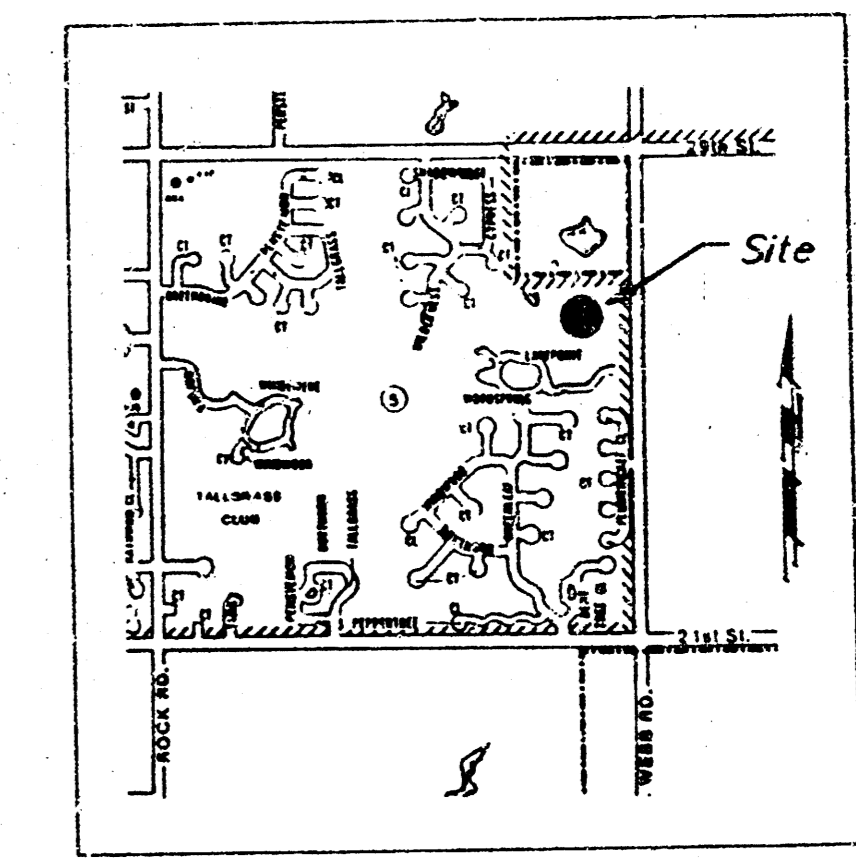
Sanitary Sewers \_\_\_\_\_  
Storm Sewers JRH 7/17/91  
Driveway Approaches \_\_\_\_\_  
Water Mains \_\_\_\_\_  
Paving \_\_\_\_\_

**NOTE TO CONTRACTOR**

INSPECTION AND TESTING FOR THIS PROJECT IS TO BE PROVIDED BY A LICENSED CONSULTING ENGINEERING FIRM UNDER CONTRACT WITH THE OWNER/DEVELOPER. SAID INSPECTION TO BE IN ACCORDANCE WITH THE CITY OF WICHITA STANDARD CONSTRUCTION ENGINEERING PRACTICES AND CERTIFIED BY A LICENSED PROFESSIONAL ENGINEER. NO WORK SHALL BE PERFORMED IN DEDICATED EASEMENTS OR PUBLIC RIGHT-OF-WAY BY THE CONTRACTOR WITHOUT SUCH INSPECTION NOR SHALL ANY WORK BE COMMENCED WITHOUT WRITTEN AUTHORIZATION BY THE CITY ENGINEER.

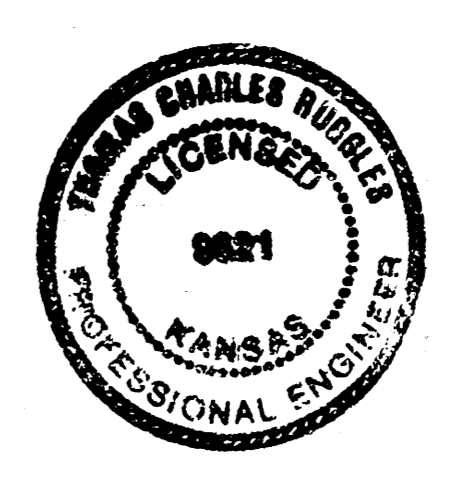
<p>Quantities taken from Drainage Area Plan.</p> <p><math>Q_{1.20} = 11.8</math> cfs <math>Q_2 = 2.9</math> cfs</p> <p><math>Q = 0.6 \cdot A \cdot \sqrt{2 \cdot h \cdot g}</math></p> <p><math>Q = \text{Flow (cfs)}</math> <math>A = \text{Area (ft}^2\text{)}</math> <math>h = \text{Depth (ft)}</math> <math>g = \text{Gravity (ft/s}^2\text{)}</math></p> <p>Open Area of Grate = 4.783 ft<sup>2</sup></p>	<p>Calculations for Grate Capacity:</p> <p>Case 1: <math>h = h(\text{ROW}) - h(\text{high edge})</math> <math>h = 6.39 - 5.60</math> <math>h = 0.79'</math></p> <p><math>Q = 0.6 \cdot 4.783 \cdot \sqrt{2 \cdot 0.79 \cdot 32.2}</math> <math>Q = 20.47</math> cfs</p> <p>Case 1: <math>h = h(\text{TC}) - h(\text{high edge})</math> <math>h = 6.09 - 5.60</math> <math>h = 0.49'</math></p> <p><math>Q = 0.6 \cdot 4.783 \cdot \sqrt{2 \cdot 0.49 \cdot 32.2}</math> <math>Q = 16.12</math> cfs</p>
---	--

"As Bilt" Plans  
SE Anderson P.E.'s  
Wichita, Kansas  
This project was constructed in basic conformance with this plan. SEE

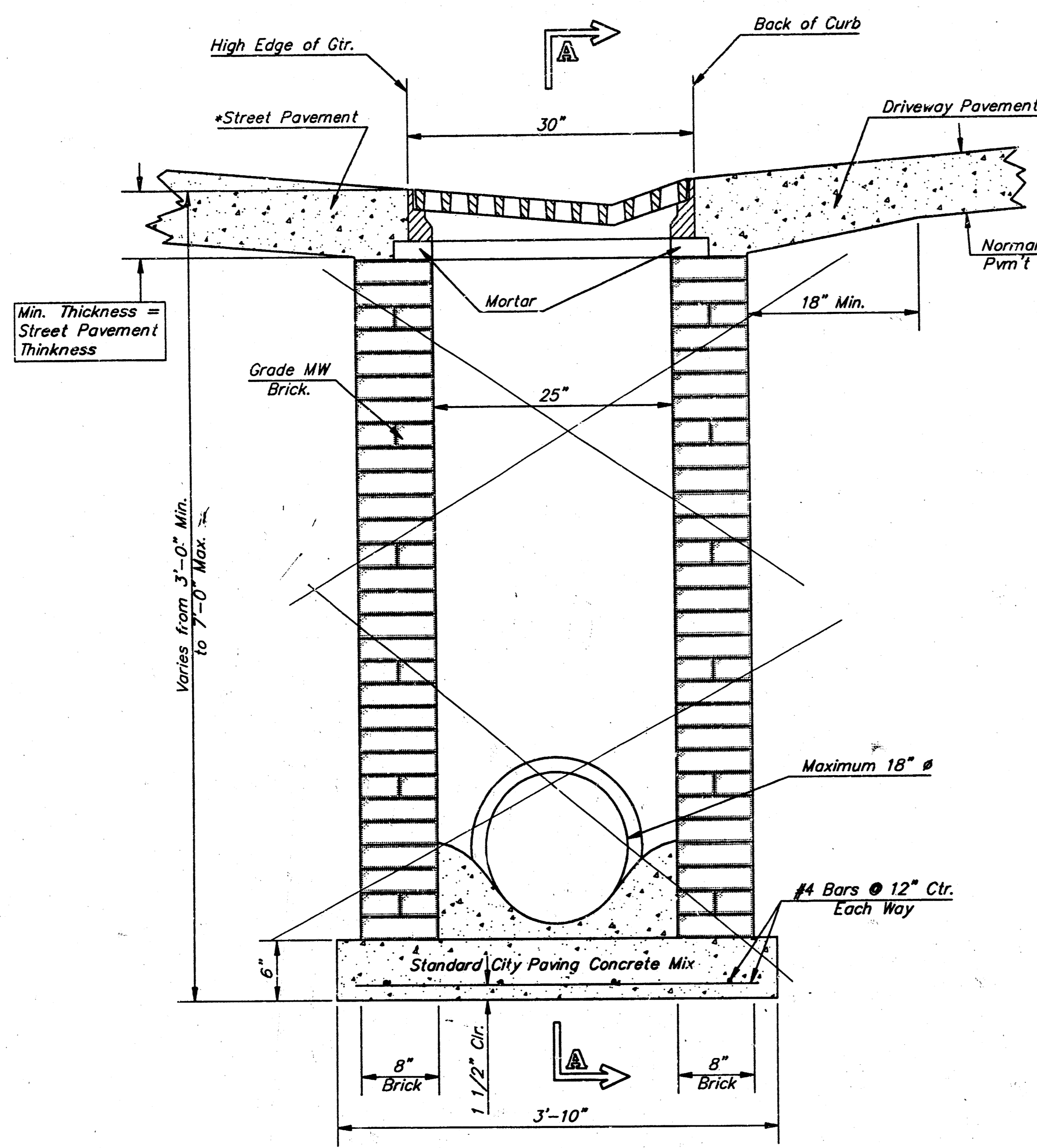


Location Map

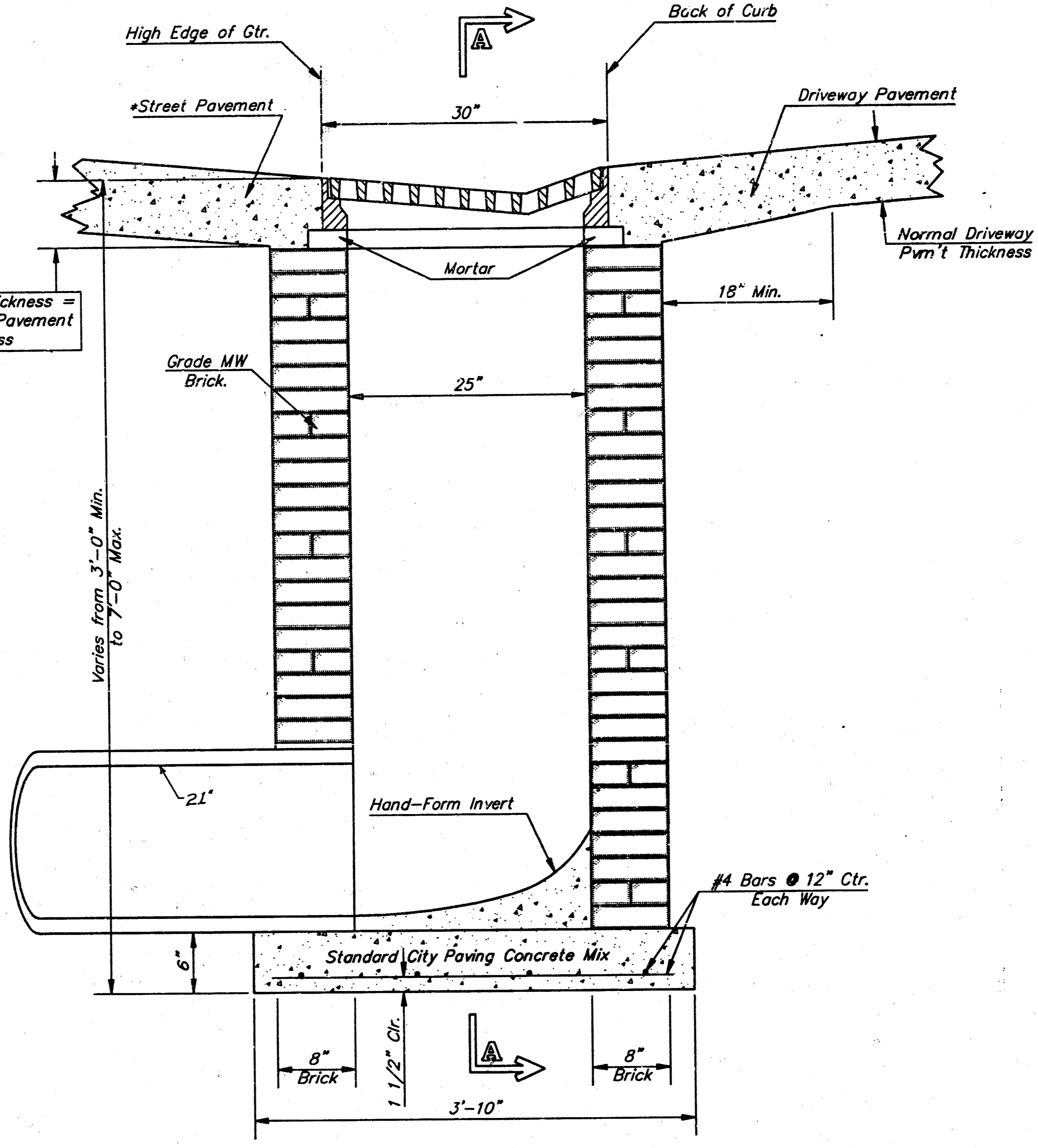
Benchmark: City Disc. 32' N. and 28' E. of 1/4 Sec. Corner at Webb Road and 25th Street North. Elev. = 225.09



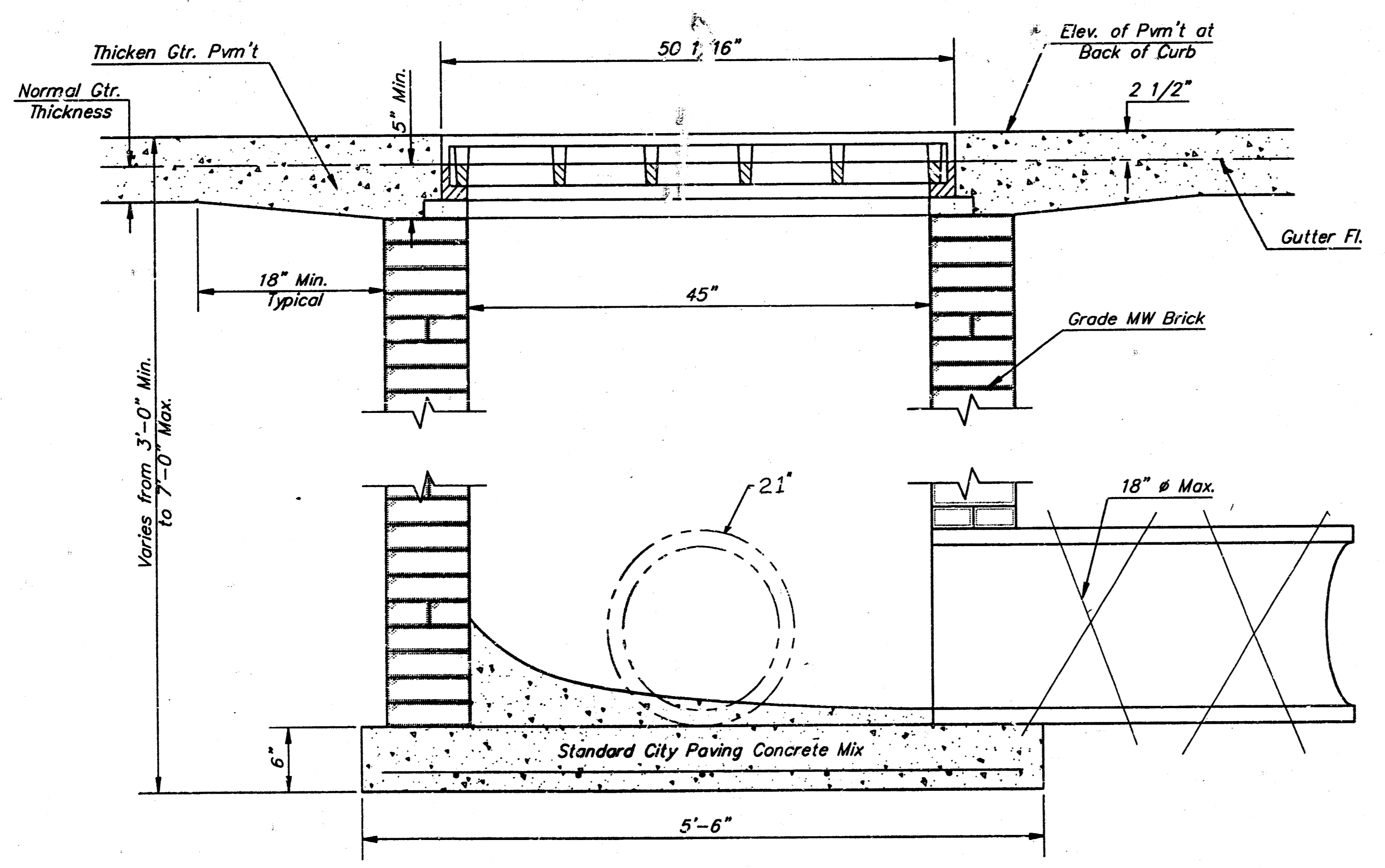
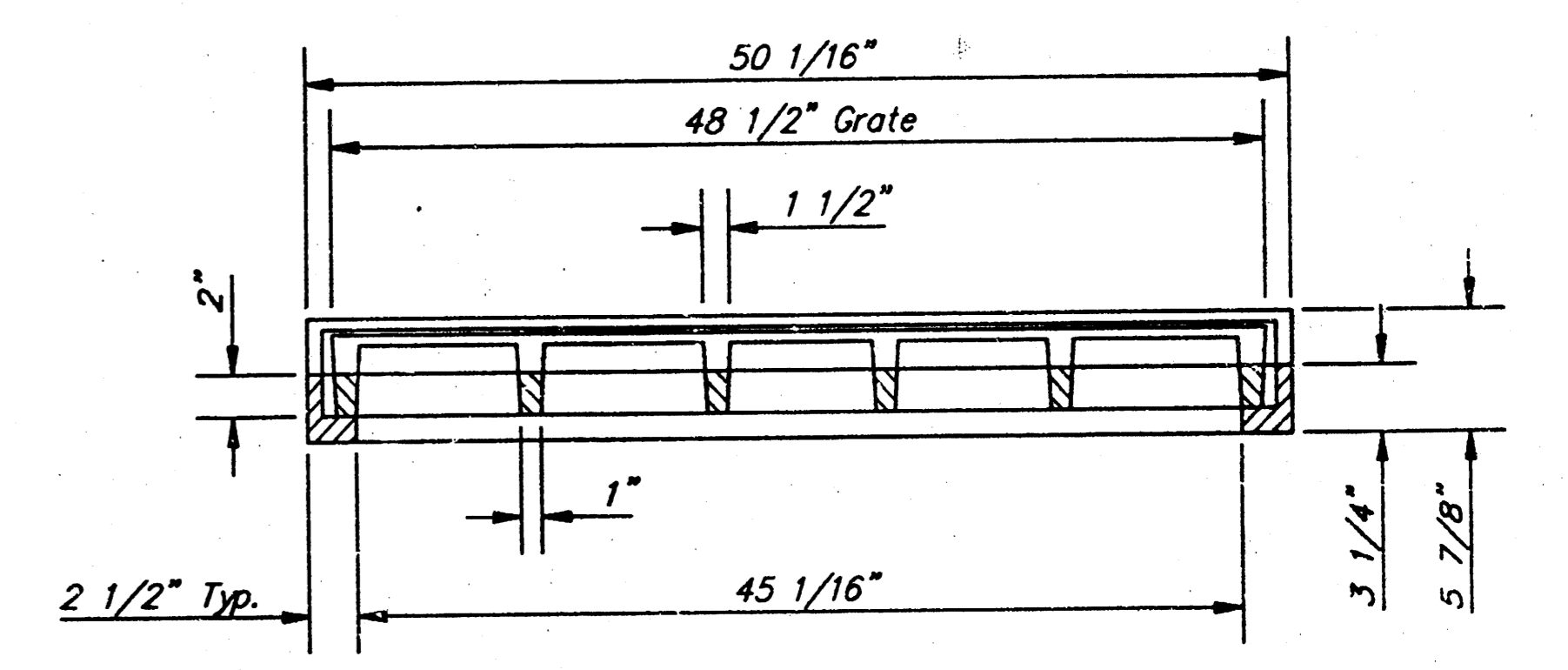
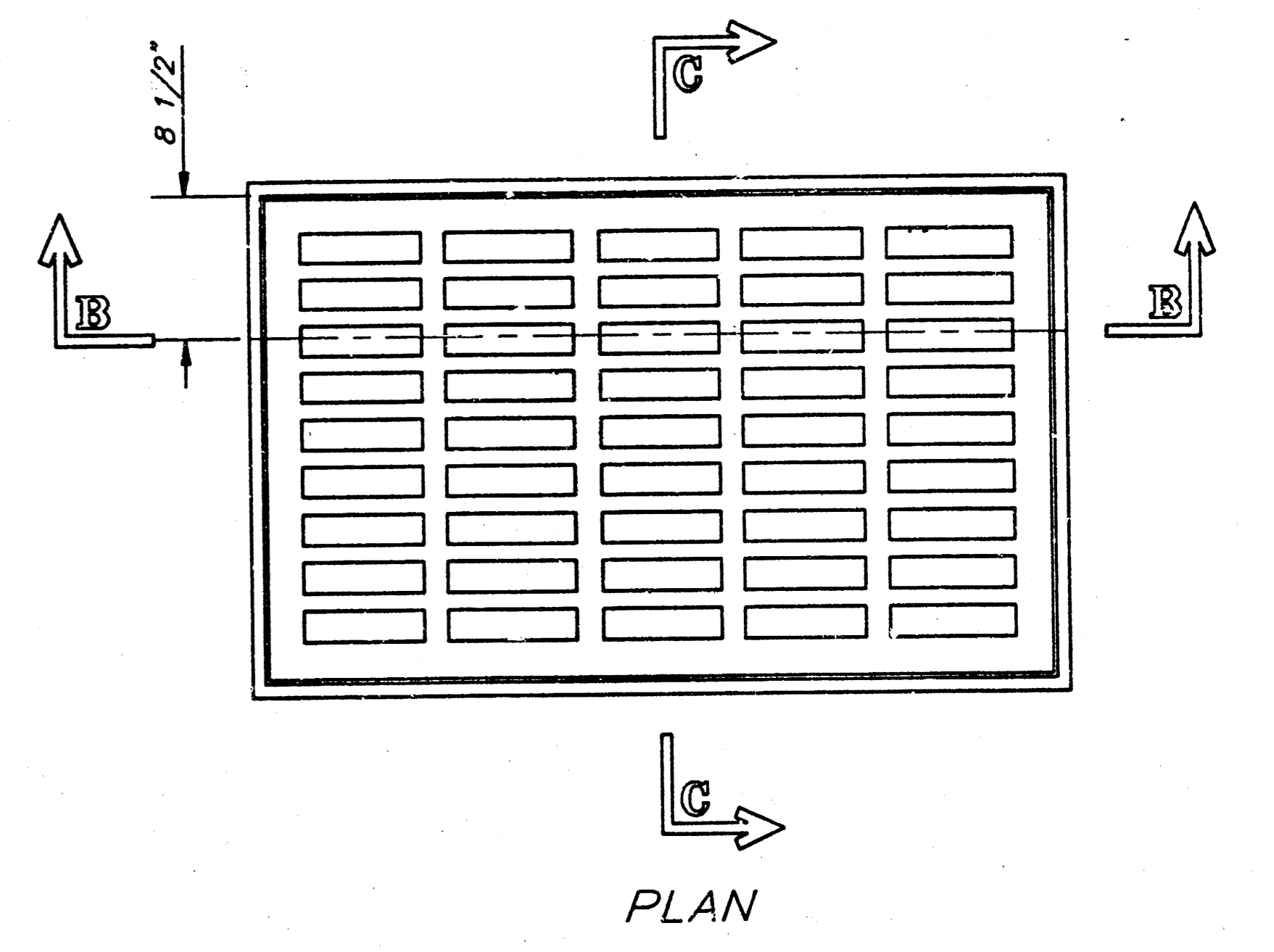
<b>DRIVEWAY INLET CONST.</b>			
<b>BAUGHMAN COMPANY P. A.</b> ENGINEERING & SURVEYING 316/262-7271 • 315 ELLIS • WICHITA, KANSAS 67211			
PROJECT NUMBER <b>298 PPS</b>		REV.	SHEET
DESIGN T.C.R.	DRAWN B.P.	APPROVED	DATE 15 JULY 91
SCALE 1" = 10'		REV.	SHEET 1 OF 2



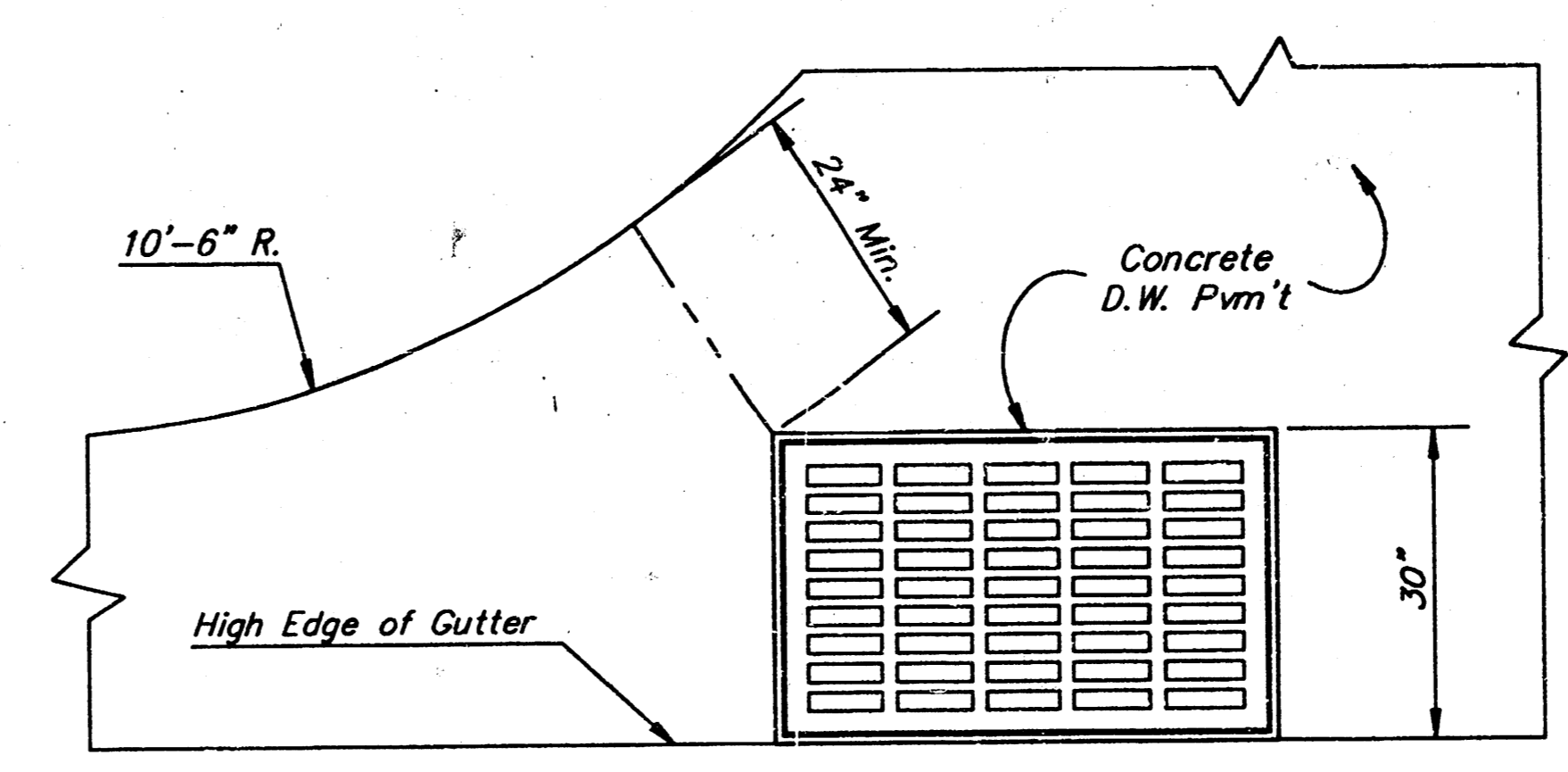
END OUTLET



SIDE OUTLET

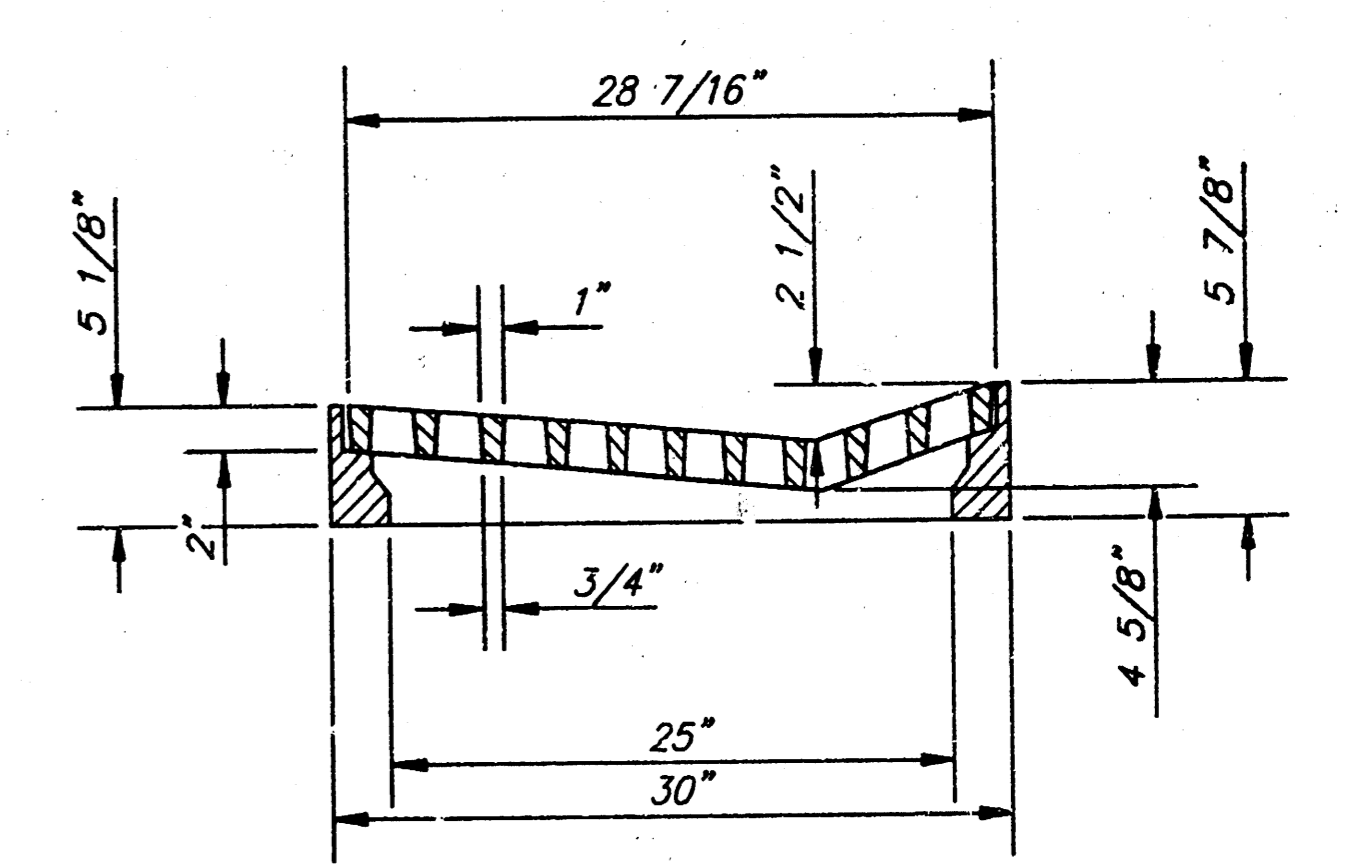


SECTION A-A



PLAN

Radius Ramp Drive to be Constructed On Lot 3, Block 2 per City Standard



DEETER #2095 FRAME & GRATE  
 TOTAL WEIGHT: 705 lbs.

GENERAL NOTES

1. Grate frame to be installed on thin mortar cushion to insure full support along brick walls. Concrete used for inlet construction shall be concrete pavement mix.
2. Inlet invert shall be shaped with 8 sack sand mix concrete to create flow channels and to increase hydraulic efficiency such that the inlet will be self cleaning between all inlet and/or outlet pipes.
3. The ends of all pipes installed in inlets shall be cut off flush with the inside face of the inlet wall.
4. Inlet Frame and Grate to be Deeter #2095 or approved equal

SHANNON WOODS INLET RECONSTRUCTION  
 DRIVEWAY INLET DETAILS

BAUGHMAN COMPANY P. A.  
 ENGINEERING & SURVEYING  
 316/262-7271 • 315 ELLIS • WICHITA, KANSAS 67211

DESIGN	DRAWN	APPROVED	DATE	SCALE
T.C.A.	J. Long		June 17, 1991	None

PROJECT NUMBER \_\_\_\_\_ SHEET 2 OF 2