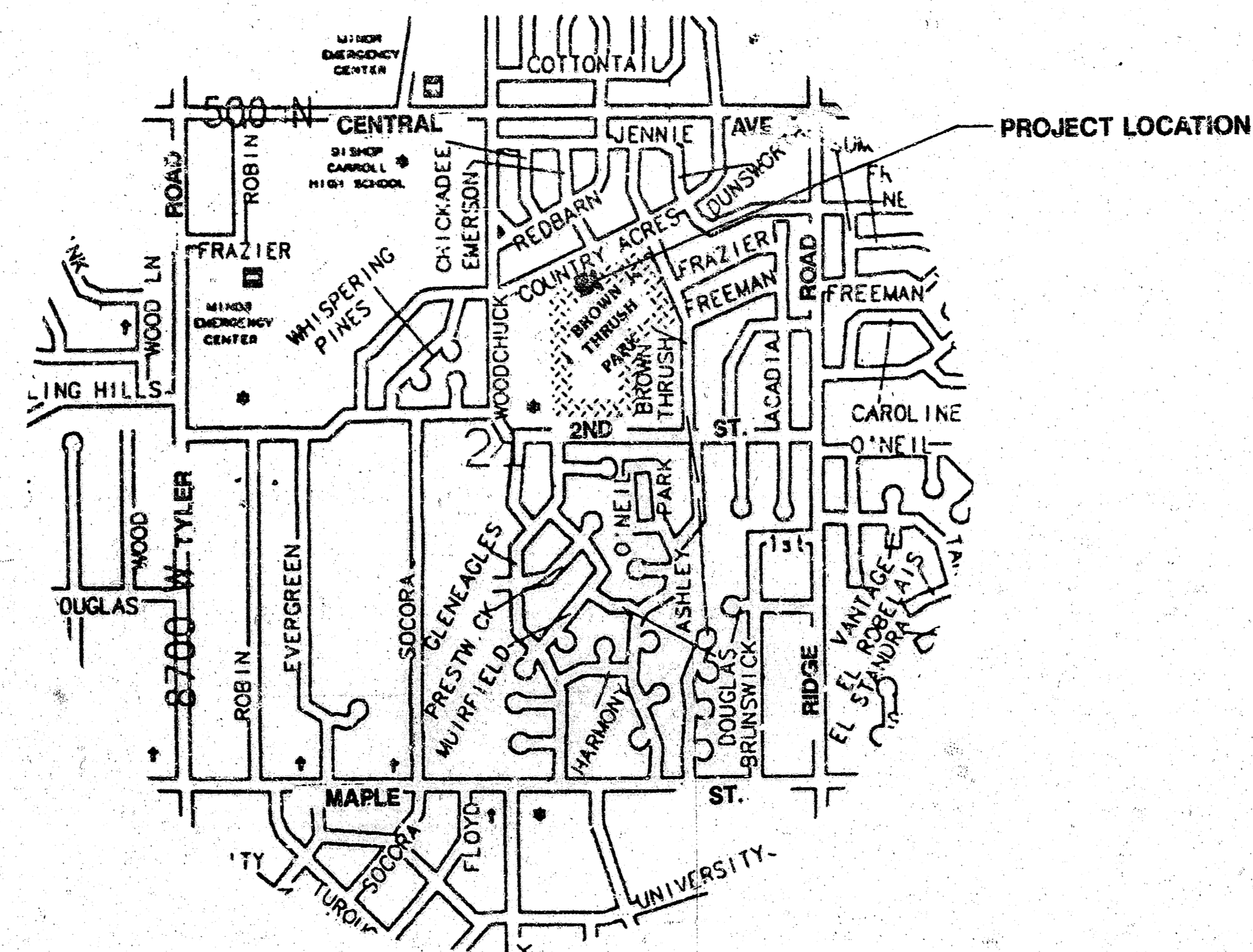


SITE IMPROVEMENTS PUBLIC PARKING LOT FOR BROWTHRUSH PARK

PROJECT NO. 472-76-245-82168-000-000-001

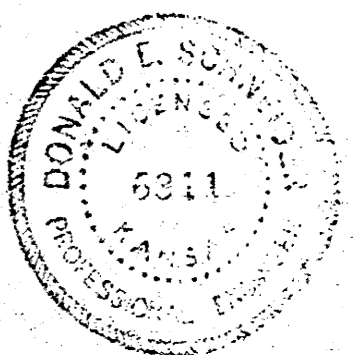
INDEX NO. 785089



M.E. LINDEBAK CITY ENGINEER
CITY OF WICHITA, KANSAS

INDEX TO SHEETS

SHEET NO.	DESCRIPTION
1. _____	TITLE SHEET
2. _____	CONSTRUCTION PLAN
3. _____	CROSS SECTIONS



B.M. 144.96 CITY STD. RIDGE RD AND 2ND STREET
 37.5' N. + 48' W. OF C. BOTH.
 B.M. 156.29 S.W. COR. CONC. PORCH SLAB, HOUSE No.
 405 COUNTRY ACRES.
 B.M. 146.82 "4" IN TOP CURB N. END RETURN, N.E. CORNER
 BROWNTHRUSH + 2ND ST.
 B.M. 147.92 "4" IN TOP CURB, E- END RETURN, S.E. CORNER
 COUNTRY ACRES + BROWNTHRUSH.

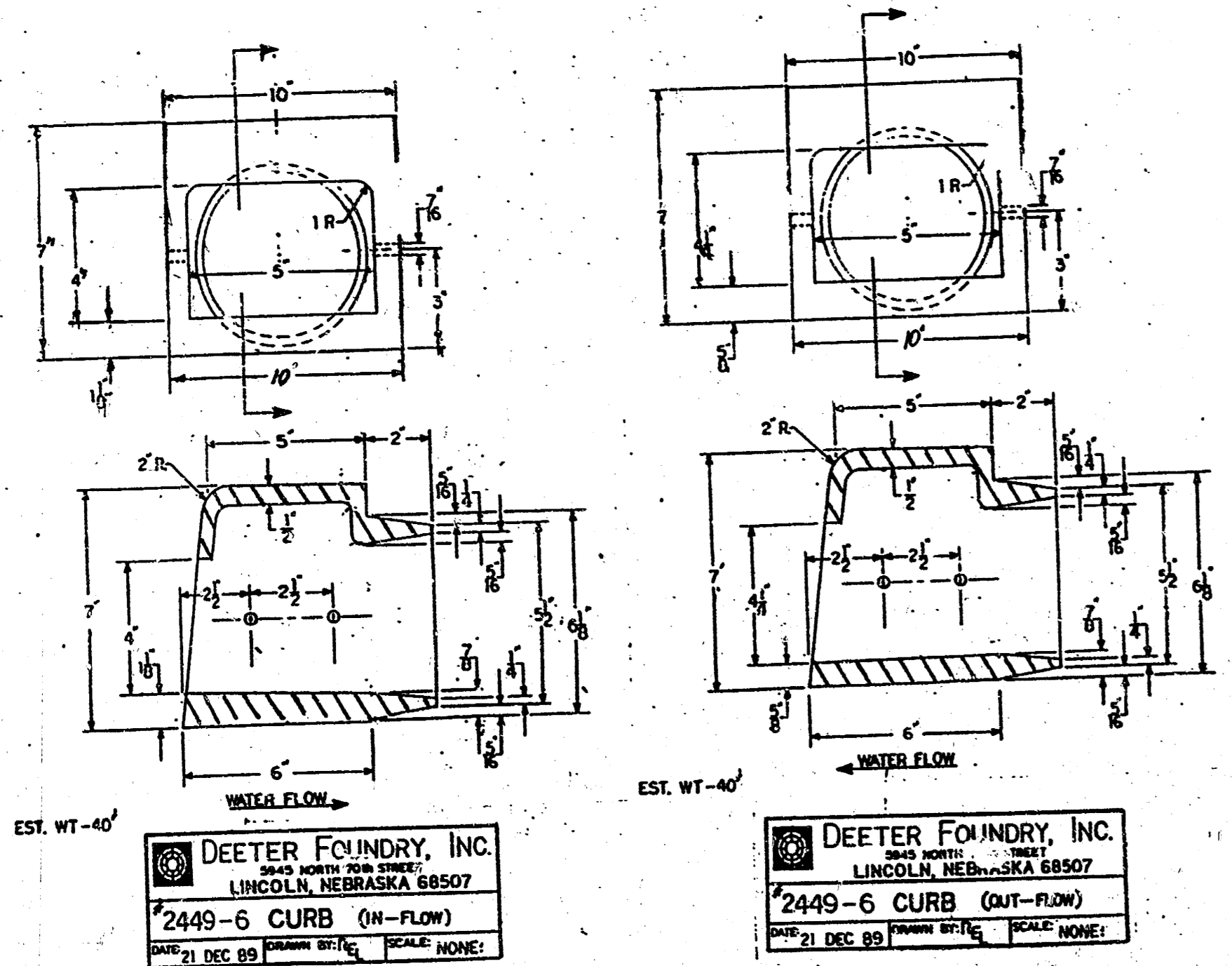
REMOVE EXISTING COMB. CURB AND GUTTER AND
 RE-CONSTRUCT COMBINED CURB & GUTTER TO
 ACCOMMODATE 6" P.V.C. DRAIN PIPE.

REMOVE EXISTING COMB. CURB AND GUTTER AND
 RE-CONSTRUCT COMBINED CURB & GUTTER TO
 ACCOMMODATE 6" P.V.C. DRAIN PIPE.

NOTE: TRANSITION CURB HEIGHT TO ACCOMMODATE CURB CASTING COST TO BE
 SUBSIDIARY TO BID PRICE FOR COMBINED CURB AND GUTTER.

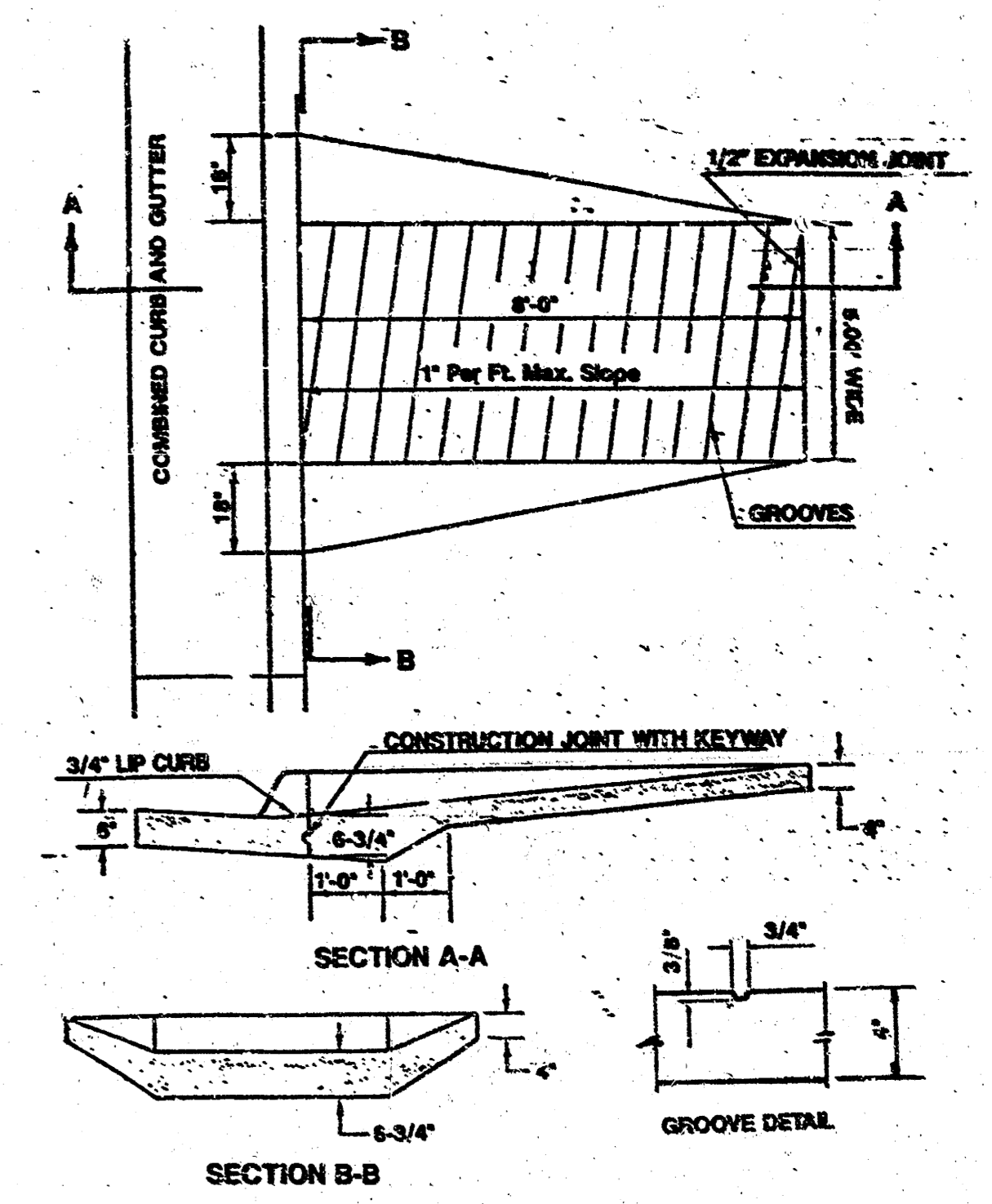
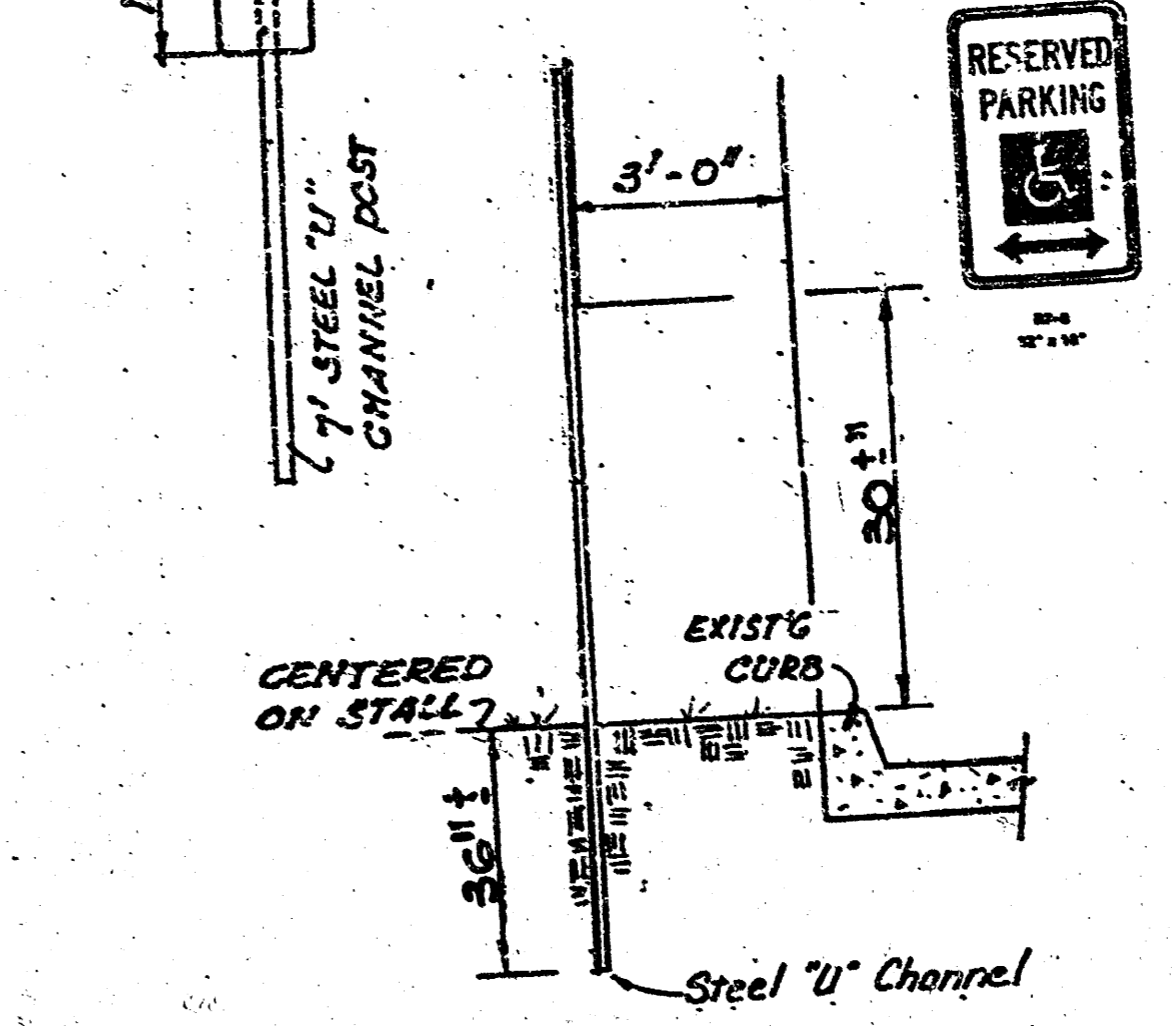
STEEL CURB CASTING TO BE ANCHORED WITH 3/8" DIA. GALVANIZED BOLTS 3'-1/2" IN LENGTH.

EXPOSED PORTIONS OF THE INTERIOR AND EXTERIOR OF THE STEEL CURB CASTING TO BE PAINTED WITH ONE COAT OF
 KEM KROMK METAL PRIMER 866 SERIES AND ONE COAT OF GRAY S.W. INDUSTRIAL ENAMEL 844 SERIES OR EQUAL TO
 CLOSELY MATCH THE COLOR OF THE CONCRETE CURB. COST FOR PAINTING IS TO BE SUBSIDIARY TO BID PRICE FOR DEETER
 # 2449-6 curb casting each.



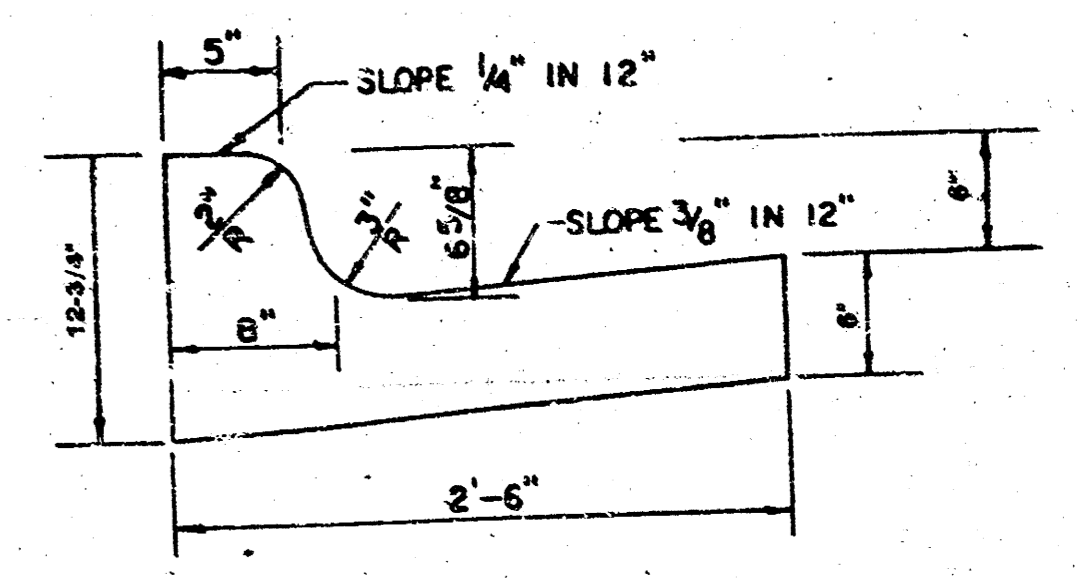
NOTE: ALL LETTER, SYMBOL, SIZE, SPACING & SIGN COLORS
 SHALL CONFORM TO THE CURRENT MANUAL ON UNIFORM
 TRAFFIC CONTROL DEVICES.

ALL SIGN MATERIAL TO BE 0.080" ALUMINUM



Bid price for Wheel chair Ramp construction shall include all costs for completion
 of a grade and necessary area grading.

COMBINED CURB & GUTTER



FABRIC BASE REINFORCEMENT SHALL BE 8 X 100 GEOTEX AS
 MANUFACTURED BY TENSAR CORPORATION OR APPROVED EQUAL.
 FABRIC BASE REINFORCEMENT SHALL BE INSTALLED IN ACCORDANCE
 WITH MANUFACTURER'S RECOMMENDATIONS. CRUSHED ROCK SHALL BE
 UNIFORMLY GRADED.

PER CENT OF AGGREGATE RETAINED	
1-1/2"	0
3/4"	15-40
#4	40-80
#10	75-85
#20	85-100

ROCK QUALITY SHALL BE THE SAME AS SPECIFIED FOR COURSE AGGREGATE FOR
 ASPHALT MIXES.

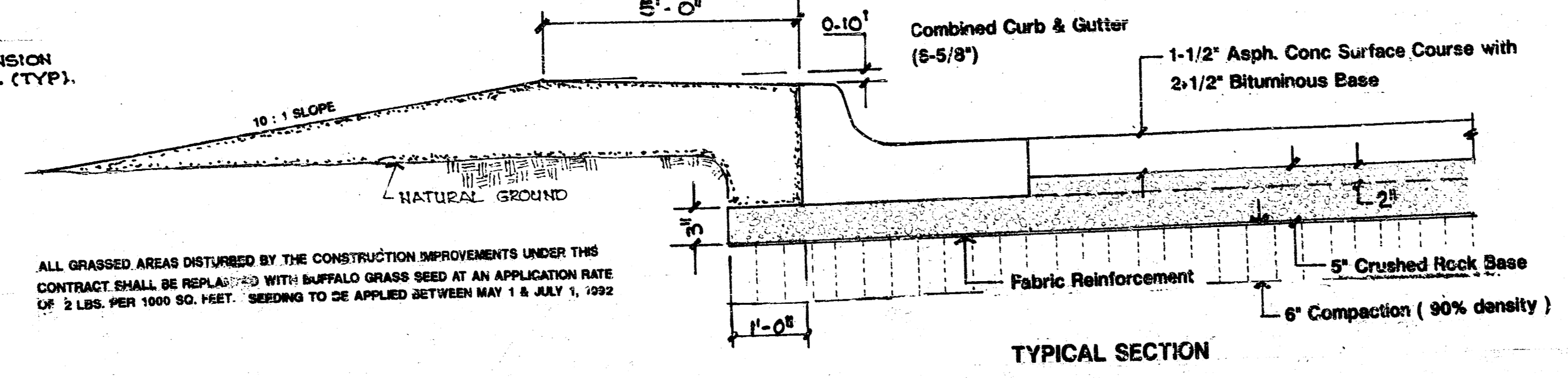
ROCK BASE IS TO BE COMPACTED AND SMOOTHED WITH A STEEL FACED ROLLER
 PRIOR TO PLACEMENT OF ASPHALT. TACK COAT WILL NOT BE APPLIED TO ROCK
 BASE.

REINFORCED CRUSHED ROCK BASE WILL BE PAID FOR AT THE SQUARE YARD PRICE
 PER 6" THICKNESS

NOTE: ALKALOD PAST DRY TRAFFIC MARKING PAINT AS APPROVED BY THE ENGINEER. (WHITE)

LOOSE FILL TO BE PNEUMATIC ROLLED. MATERIAL TO MAKE FILL TO COME FROM PARKING LOT EXCAVATION.
 EARTHWORK COMPACTION WILL BE CONSIDERED INCIDENTAL TO EXCAVATION ON THE PROJECT.

ALL GRASSED AREAS DISTURBED BY THE CONSTRUCTION IMPROVEMENTS UNDER THIS
 CONTRACT SHALL BE REPLANTED WITH BUFFALO GRASS SEED AT AN APPLICATION RATE
 OF 2 LBS. PER 1000 SQ. FEET. SEEDING TO BE APPLIED BETWEEN MAY 1 & JULY 1, 1992



TOTAL = 73 STALLS

INDEX NO. 785089
 PROJECT DESCRIPTION
**BROWNTHRUSH PARK
 PARKING LOT CONSTRUCTION**
 PROJECT NUMBER

